

V&V Reference Report

L2 ASCDS Version : 7.6.7.1

Observation 5699 - L2 Version 002
Chandra X-Ray Center

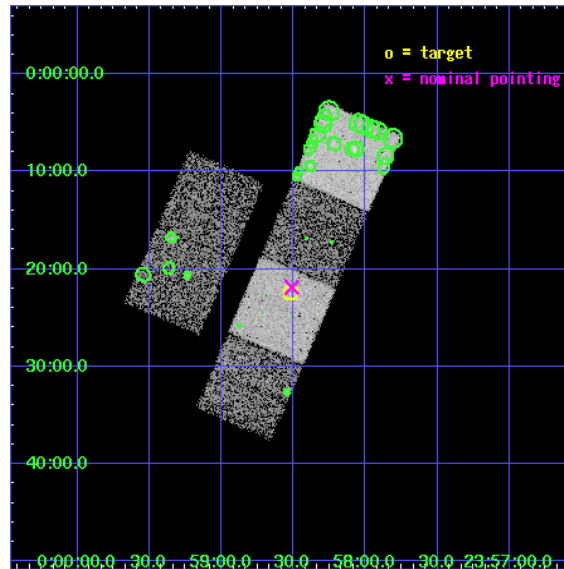
L2 Processing Date : Mar 18 2006

Contents

1	Front	2
2	OBI	3
2.1	OBI	3
2.1.1	Images	3
2.1.2	Bias	3
2.1.3	Parameters	4
2.1.4	Events	4
2.2	Compared Parameters	5
2.3	Aspect	6
2.4	Star Slots	9
2.4.1	Slot 3	9
2.4.2	Slot 4	10
2.4.3	Slot 5	11
2.4.4	Slot 6	12
2.4.5	Slot 7	13
2.5	FID Slots	14
2.5.1	Slot 0	14
2.5.2	Slot 1	15
2.5.3	Slot 2	16
3	Point Sources	17
A	Summary	18
A.1	Status	18
A.2	Comments	18

1 Front

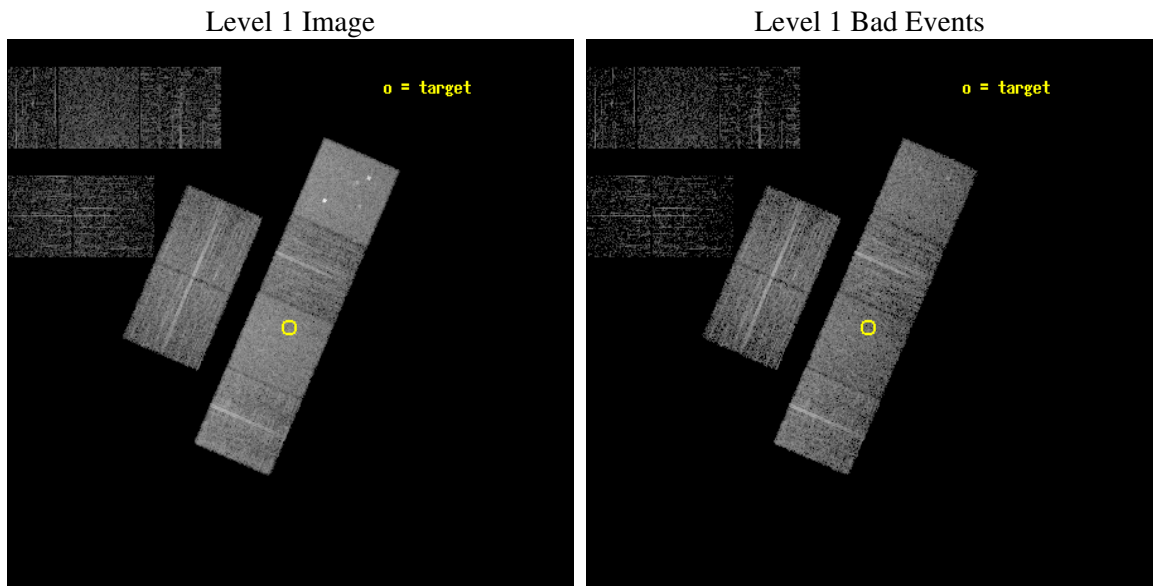
seq_num	701121
obs_id	5699
title	Studying the X-ray properties of SDSS candidate Type II quasars with exploratory Chandra observations
observer	Dr. Cristian Vignali
object	SDSS J235831.16-002226.5
dtcycle	0
cycle	P
ra_targ	359.63
dec_targ	-0.374028
ra_nom	359.62777257538
dec_nom	-0.3646646491426
roll_nom	113.33196948422
revision	2
ontime	6348.7999763489
livetime	6268.40764826
ontime2	6348.7999763489
ontime3	6348.7999763489
ontime5	6348.7999763489
ontime6	6348.7999763489
ontime7	6348.7999763489
ontime8	6348.7999763489
l2events	67854



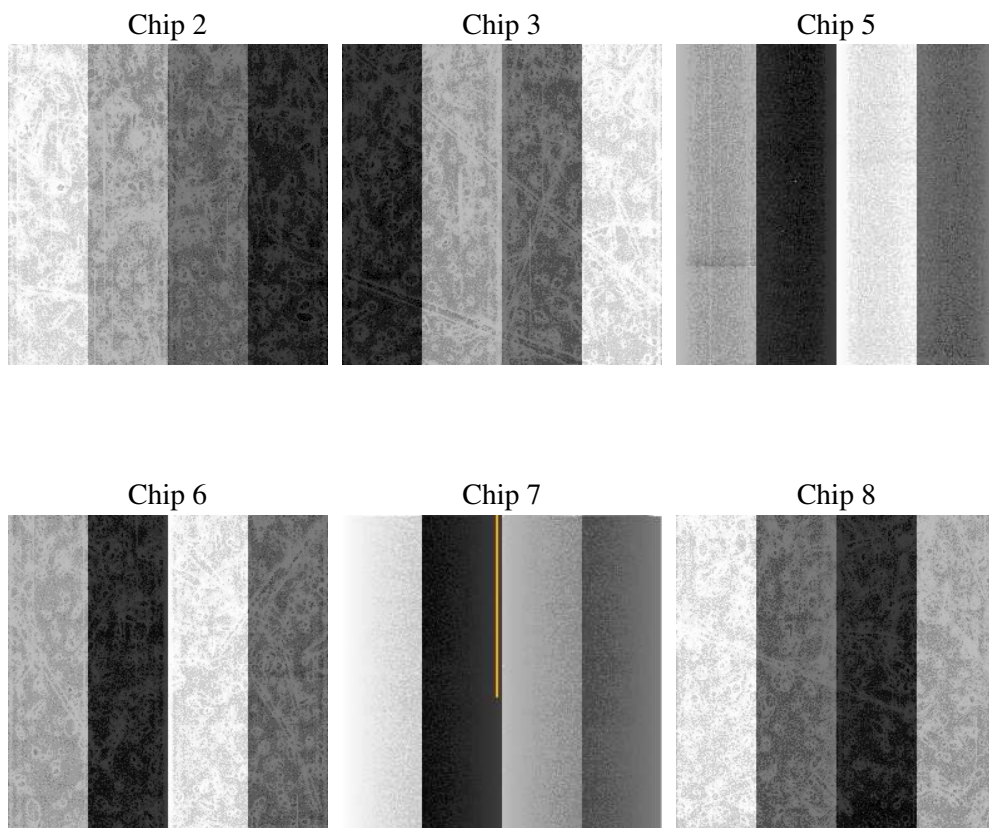
2 OBI

2.1 OBI

2.1.1 Images



2.1.2 Bias



2.1.3 Parameters

obi_num	0
ascdsver	7.6.7.1
caldsver	3.2.1
date	2006-03-18T23:54:14
revision	2

sched_exp_time	6216.000000
ontime	7344.1349866986
ontime2	7344.1349866986
ontime3	7344.1349866986
ontime5	7344.1349866986
ontime6	7344.1349866986
ontime7	7344.1349866986
ontime8	7344.1349667907
l1events	357143

2.1.4 Events

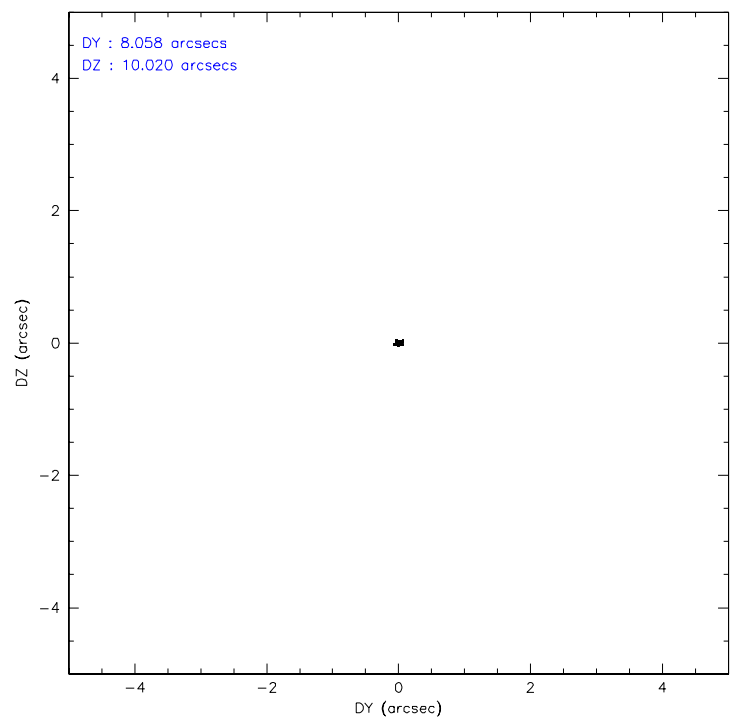
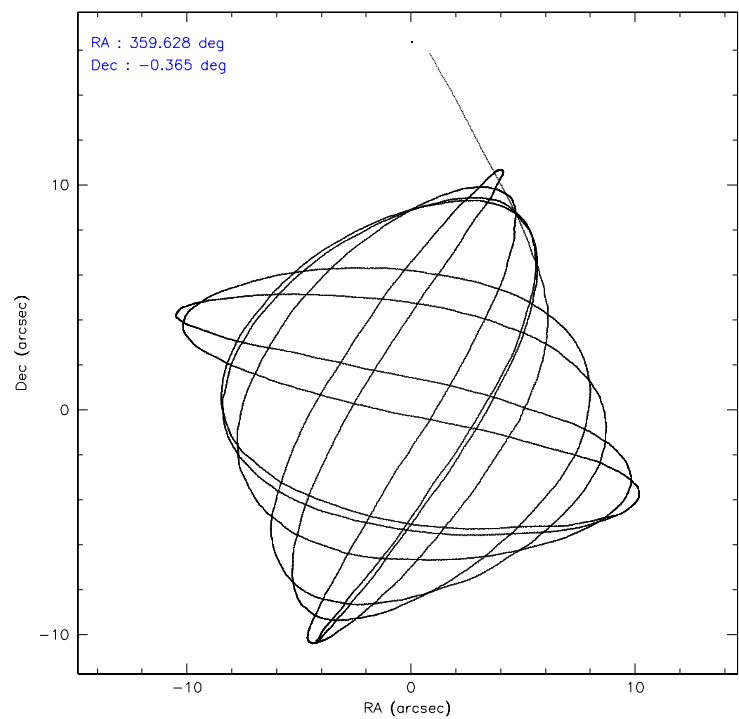
	ccd 2	ccd 3	ccd 5	ccd 6	ccd 7	ccd 8
level 1 events	50726	47595	78109	49982	68908	61823
rejected events	45570	42455	47653	44755	46327	50211
rejected %	89%	89%	61%	89%	67%	81%

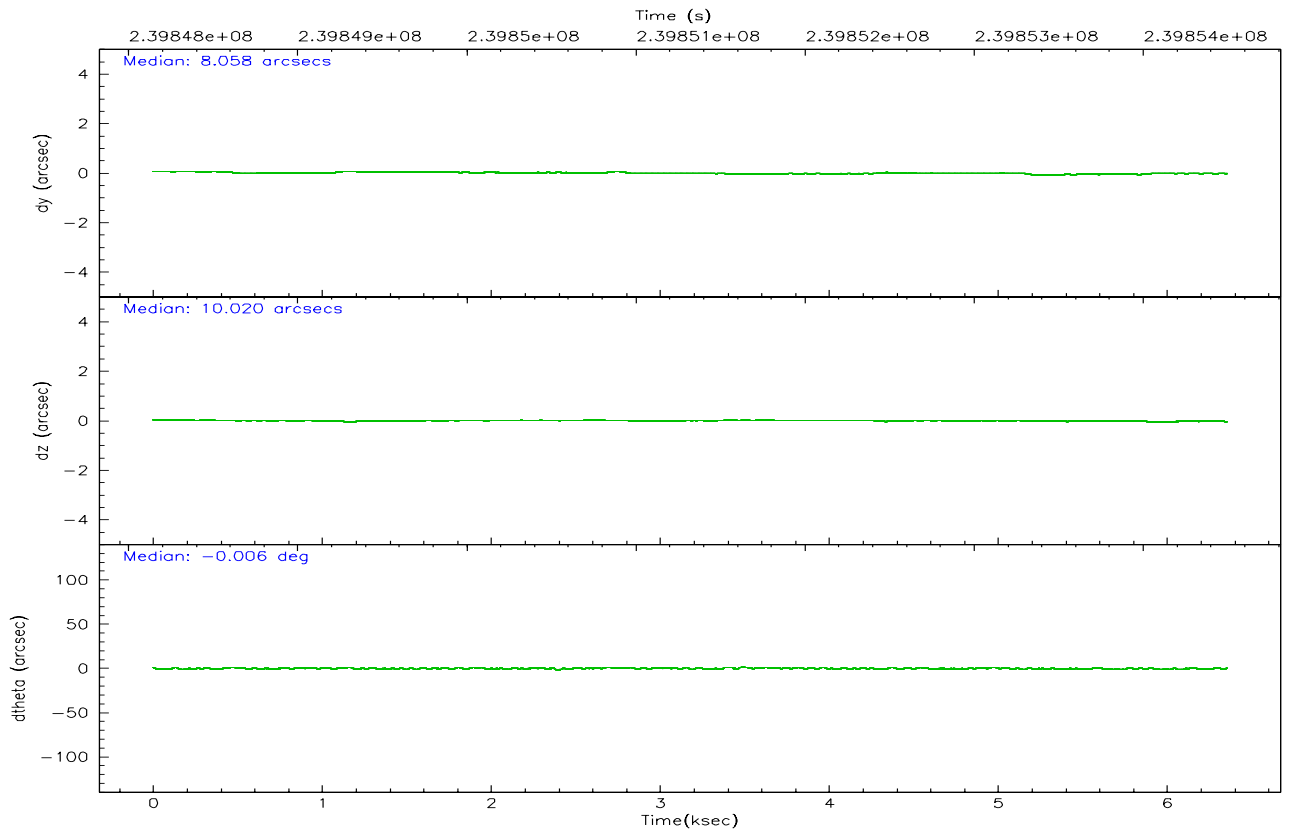
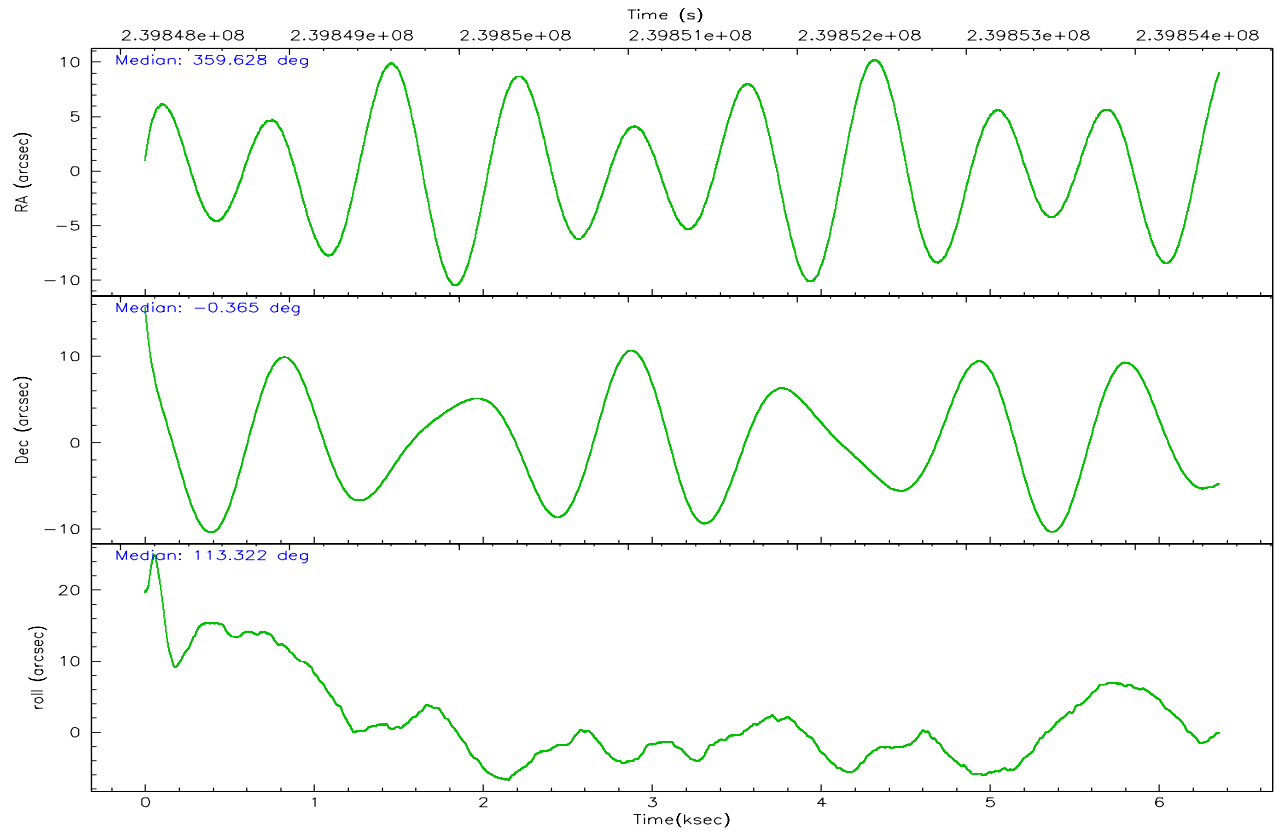
	ccd 2	ccd 3	ccd 5	ccd 6	ccd 7	ccd 8
grade 0 events	2712	2597	4603	2341	1482	4340
	5%	5%	5%	4%	2%	7%
grade 1 events	36	43	201	28	40	31
	0%	0%	0%	0%	0%	0%
grade 2 events	1224	1081	10311	1305	6610	2885
	2%	2%	13%	2%	9%	4%
grade 3 events	563	587	724	557	1391	1341
	1%	1%	0%	1%	2%	2%
grade 4 events	578	610	699	606	1264	1319
	1%	1%	0%	1%	1%	2%
grade 5 events	2037	2349	3561	2344	4493	3063
	4%	4%	4%	4%	6%	4%
grade 6 events	970	1001	18957	1224	15361	3478
	1%	2%	24%	2%	22%	5%
grade 7 events	42606	39327	39053	41577	38267	45366
	83%	82%	49%	83%	55%	73%

2.2 Compared Parameters

Parameter	Planned	Actual	Parameter	Planned	Actual
Instrument	ACIS	ACIS	Obspar format version number	6	6
Detector	ACIS-235678	ACIS-235678	Obspar file type	PREDICTED	ACTUAL
Grating	NONE	NONE	Obspar update status	NONE	UPDATED
Data mode	FAINT	FAINT	On-chip summing requested	N	N
Observation mode	POINTING	POINTING	Subarray requested	NONE	NONE
Pointing RA	359.649847	359.6277725753844	Alternating exposures requested	N	N
Pointing Dec	-0.380581	-0.3646646491426	Primary exposure time	0.000000	3.2
Pointing Roll	113.175492	113.3319694842202			
SIM focus pos (mm)	-0.684267	-0.6828225247311905			
SIM defocus (mm)	0	0.001444936568705701			
SIM translation stage pos (mm)	-190.132523	-190.1400660498719			
SIM translation stage offset (mm)	0	0.00754346686406393			
Observation start time	239848281.184000	239846591.03475			
Observation start date	2005-08-08T00:30:17	2005-08-08T00:03:11			
Observation end time	239854497.184000	239855872.92267			
Observation end date	2005-08-08T02:13:53	2005-08-08T02:37:52			
Read mode	TIMED	TIMED			

2.3 Aspect



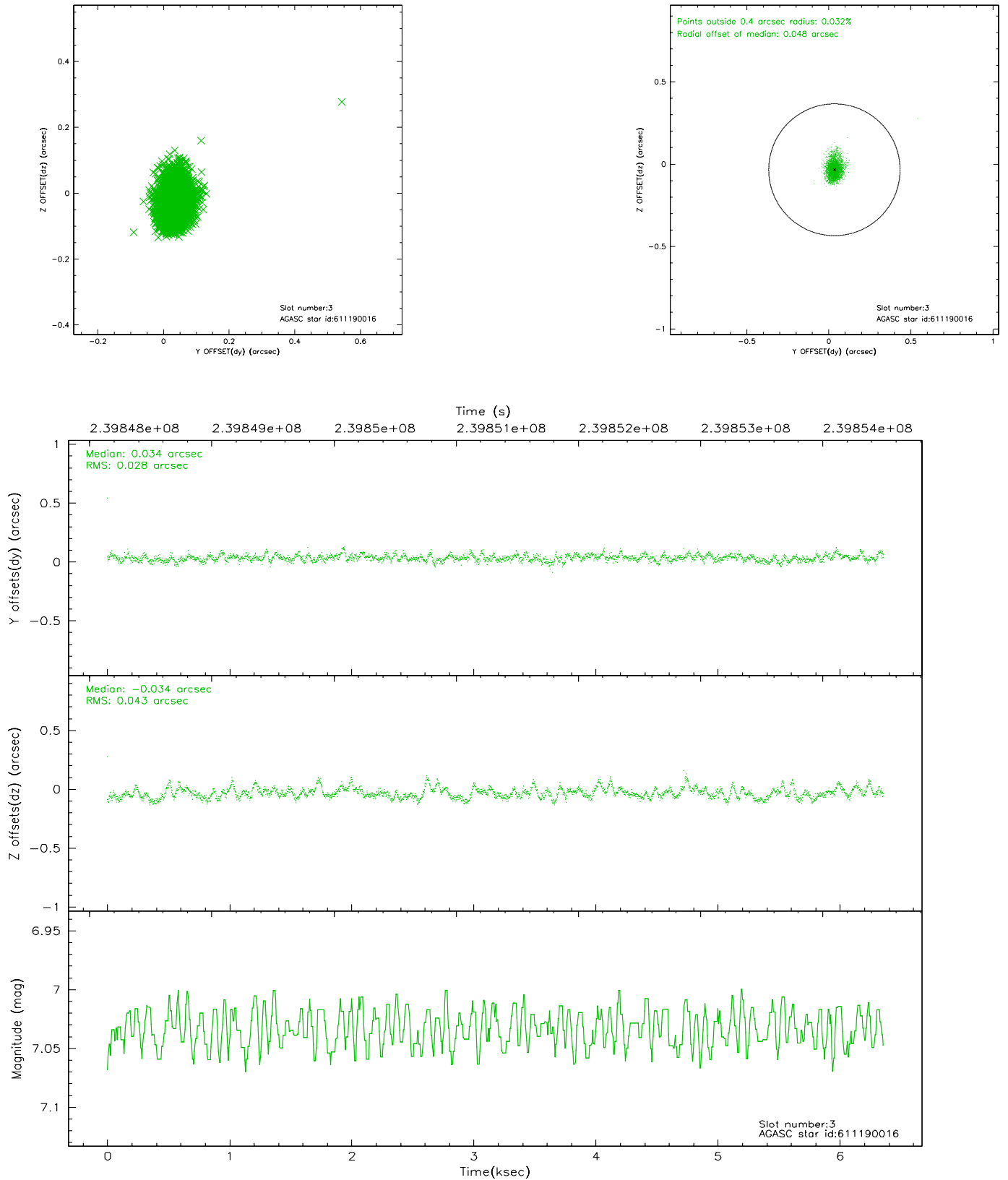


Slot Statistics

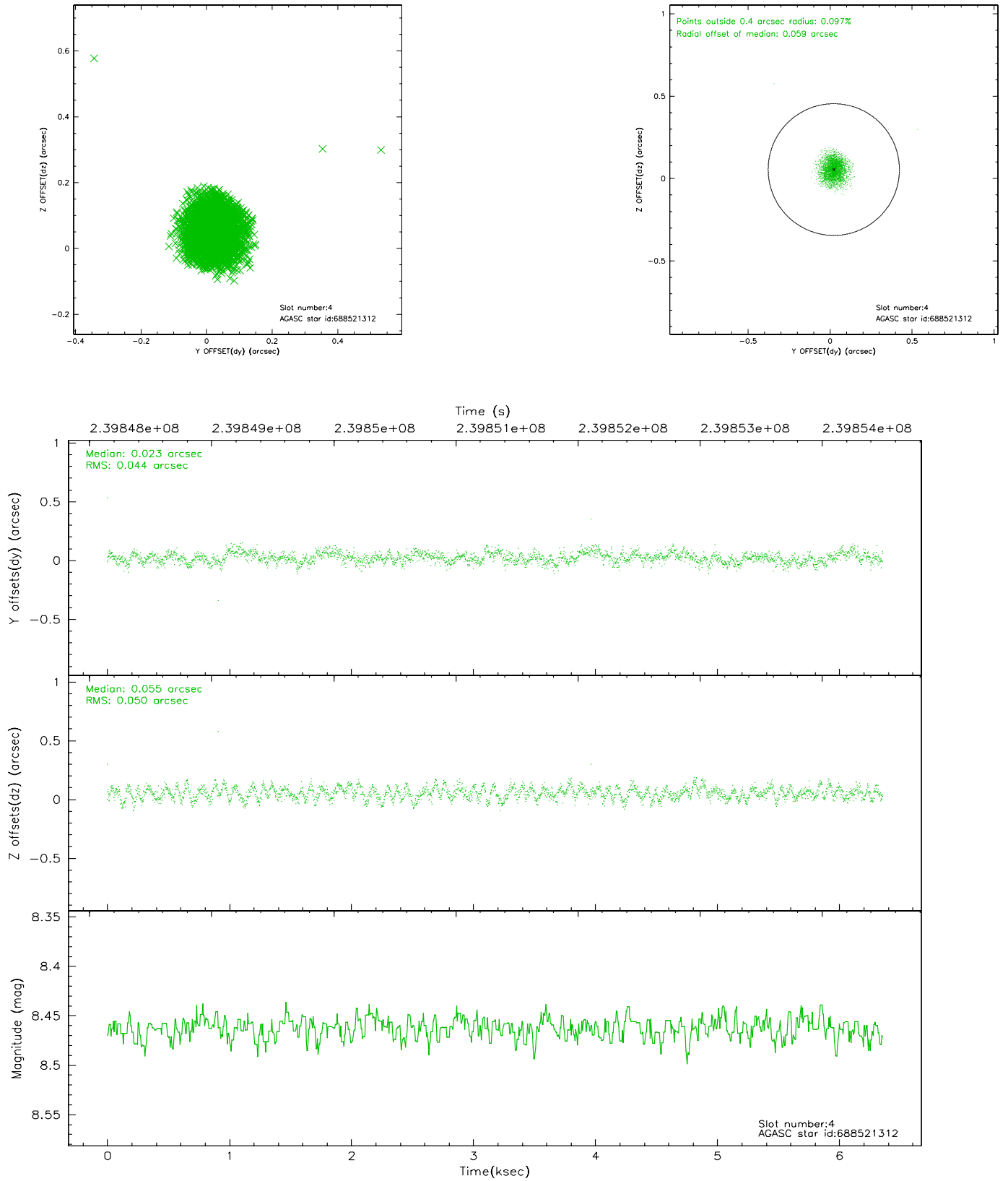
slot	status	id	mag	n_pts	med_dy	med_dz	dr1	dr2	ra	dec	mean_y	mean_z
0	FID	ACIS-S-1	7.19	1550	0.044	-0.026	0.005	0.009	0.000000	0.000000	935.26	-1726.91
1	FID	ACIS-S-2	7.11	1551	-0.023	0.010	0.006	0.010	0.000000	0.000000	-760.19	-1732.40
2	FID	ACIS-S-5	7.24	1550	-0.045	0.022	0.005	0.010	0.000000	0.000000	-1814.42	169.70
3	GUIDE	611190016	7.03	3102	0.034	-0.034	0.052	0.091	0.048423	-0.360457	-497.75	-1347.88
4	GUIDE	688521312	8.46	3101	0.023	0.055	0.069	0.110	359.794684	-0.499831	-599.69	-310.56
5	GUIDE	688522008	9.07	3099	0.124	0.063	0.073	0.113	359.793079	-0.583482	-874.38	-186.92
6	GUIDE	688522368	9.63	3100	-0.069	-0.239	0.101	0.166	359.208550	-0.509657	197.71	1642.84
7	GUIDE	140408	9.40	3099	-0.114	0.156	0.093	0.147	0.115566	0.205058	1279.22	-2370.28

2.4 Star Slots

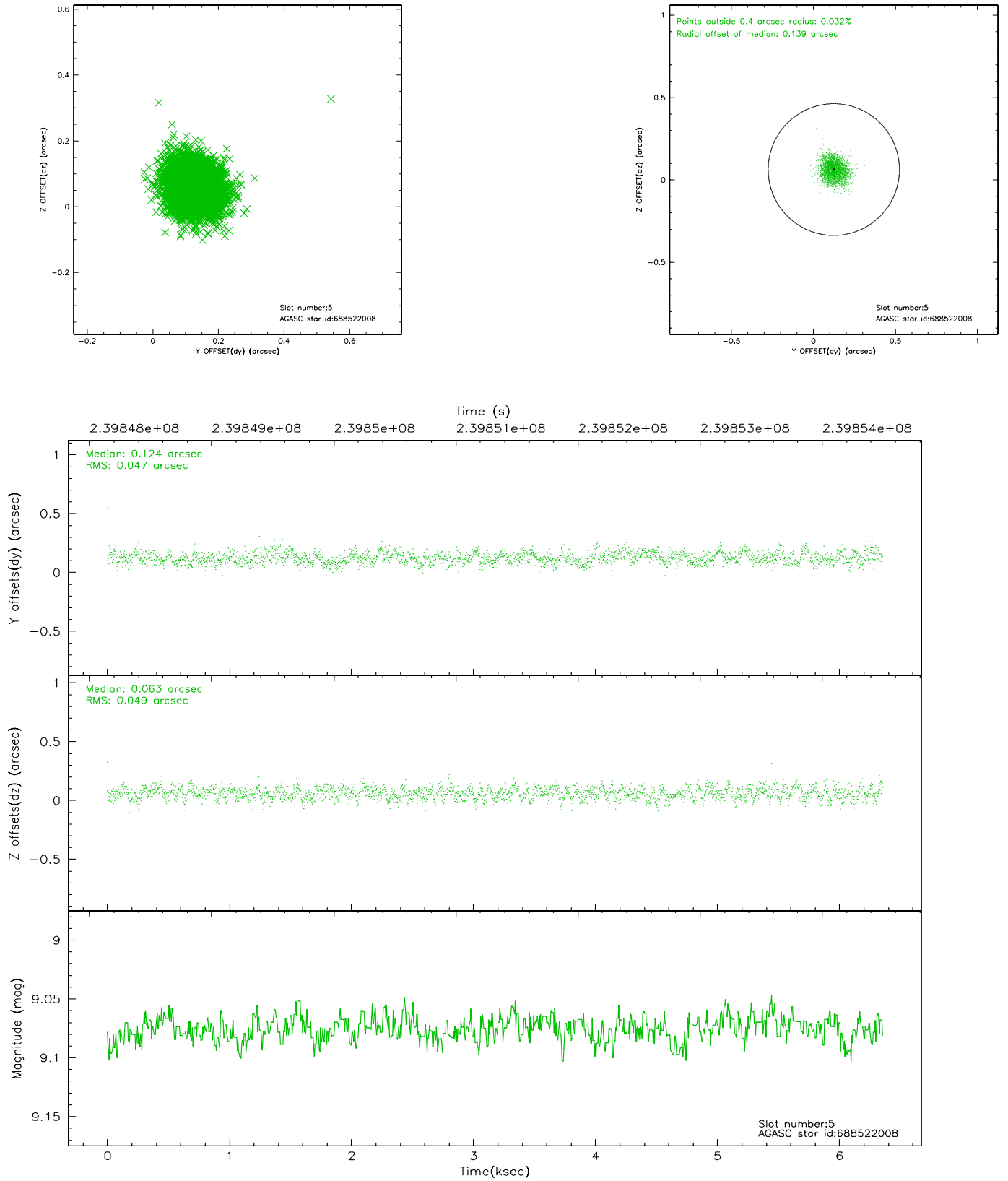
2.4.1 Slot 3



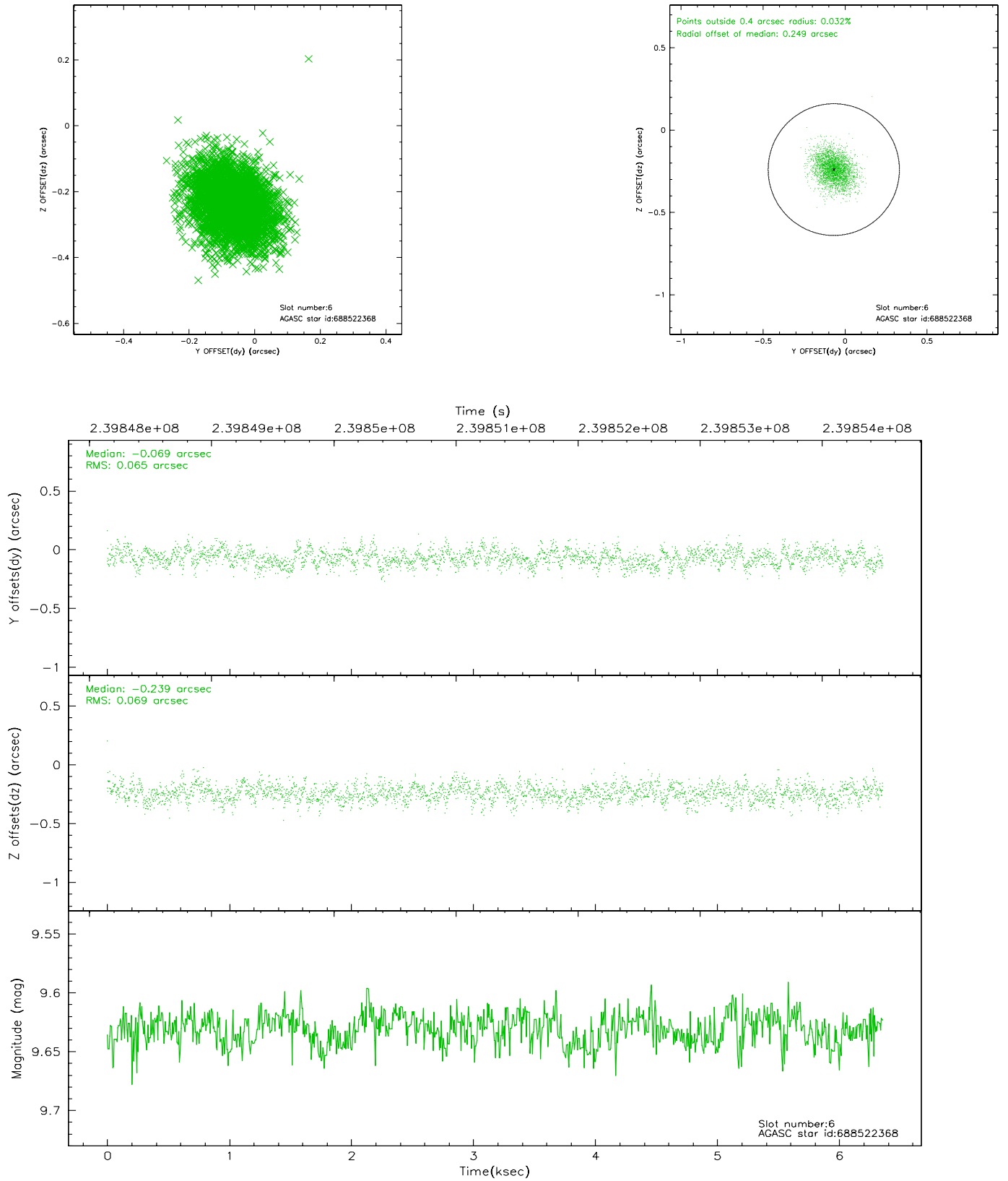
2.4.2 Slot 4



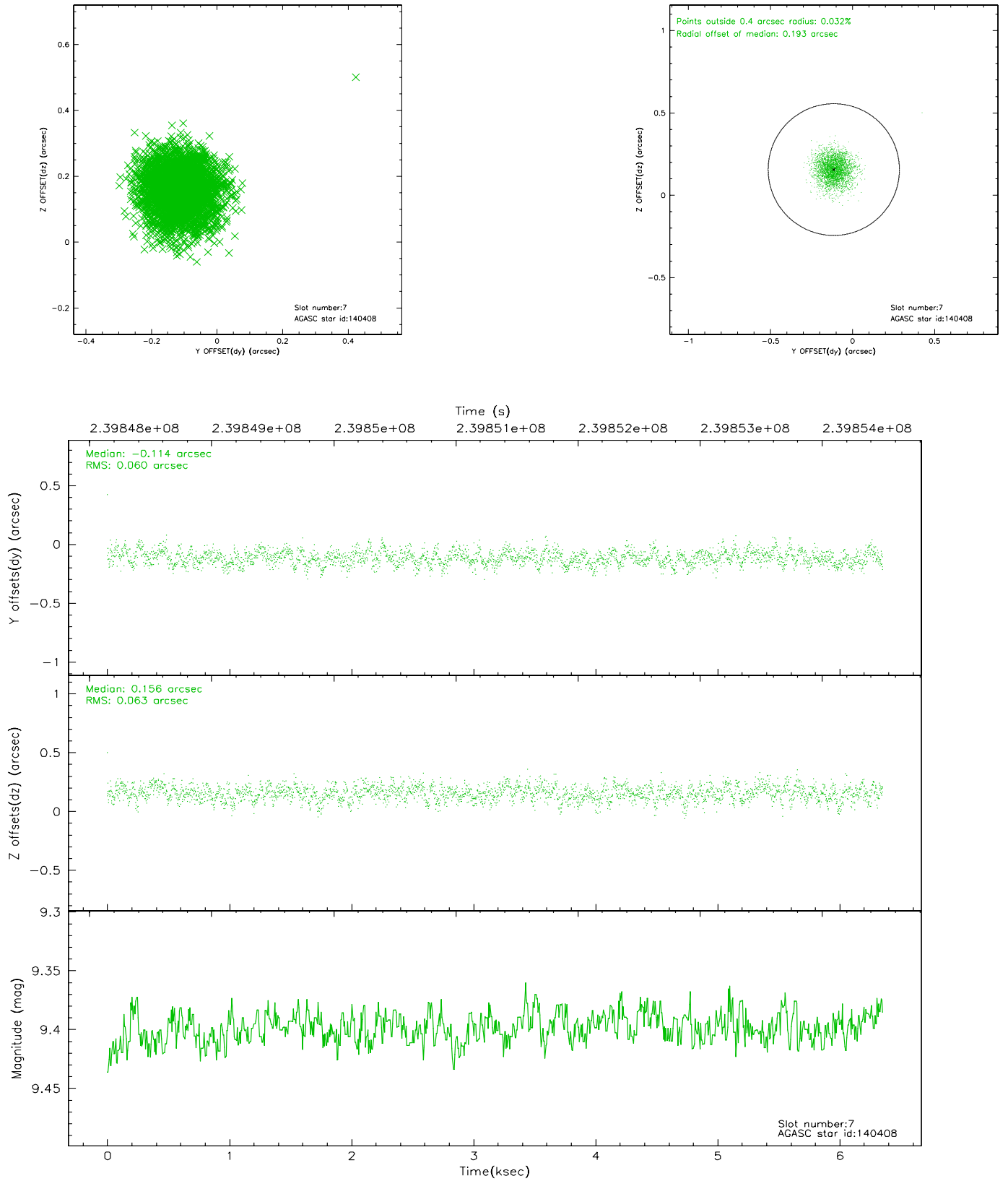
2.4.3 Slot 5



2.4.4 Slot 6

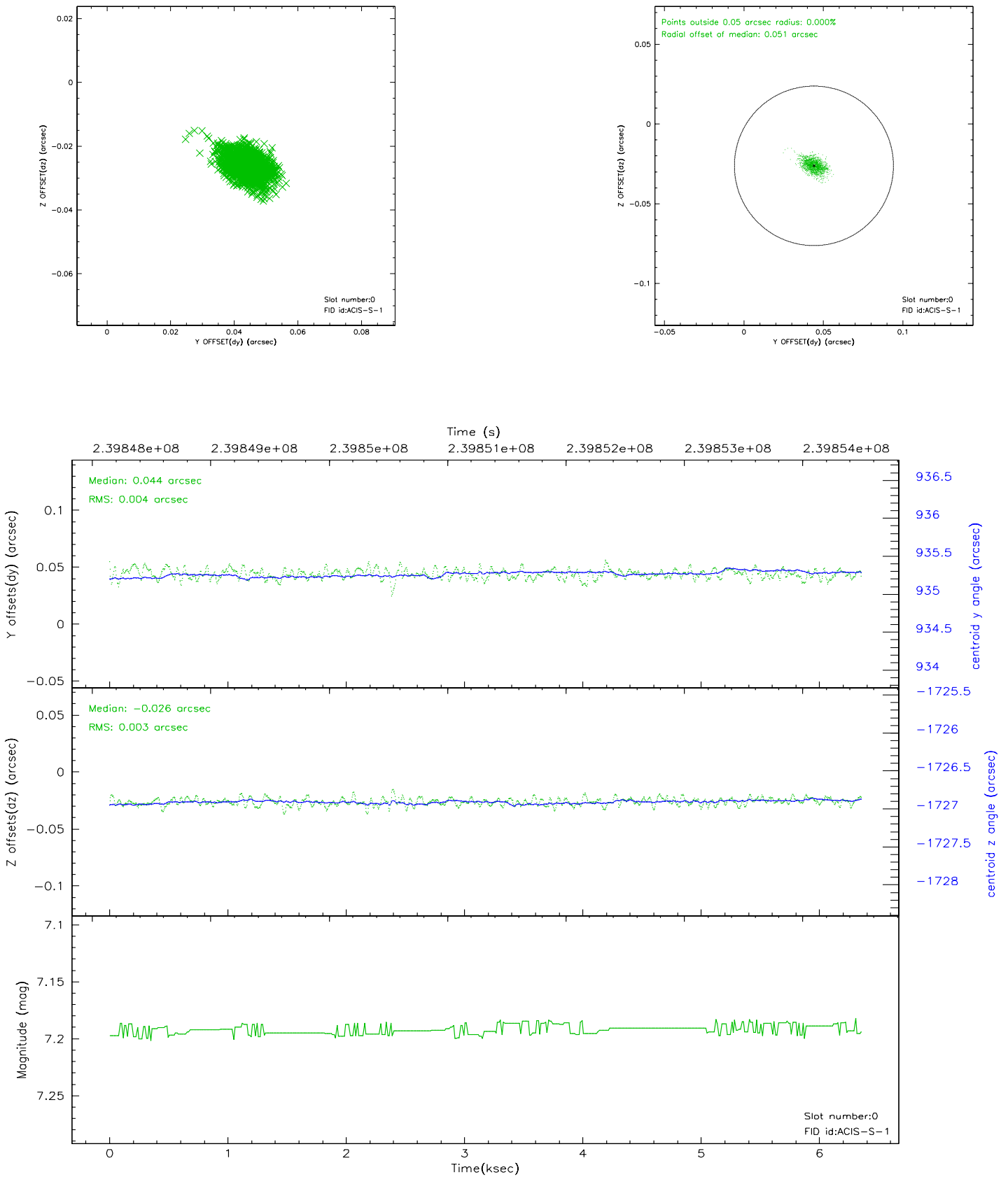


2.4.5 Slot 7

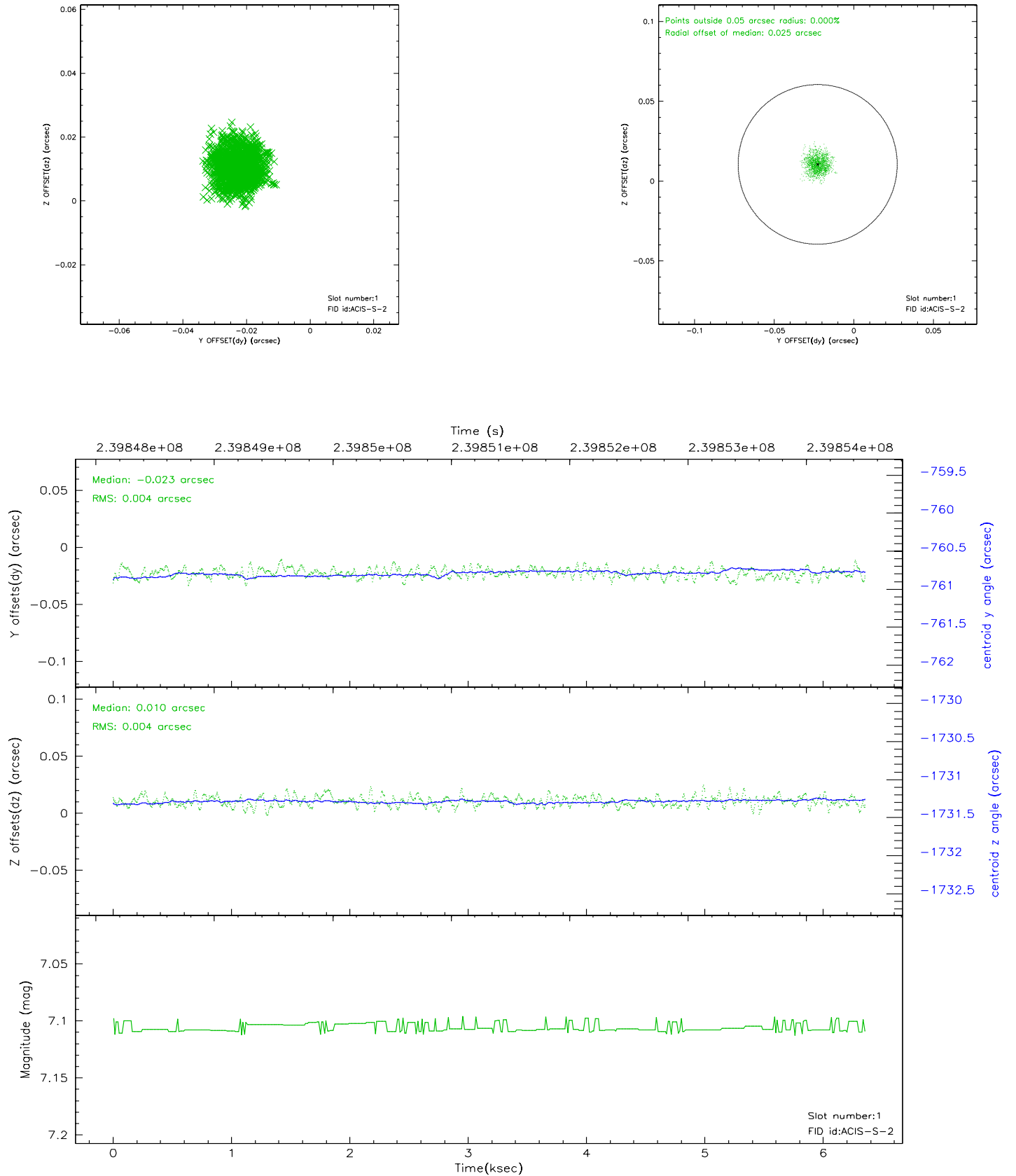


2.5 FID Slots

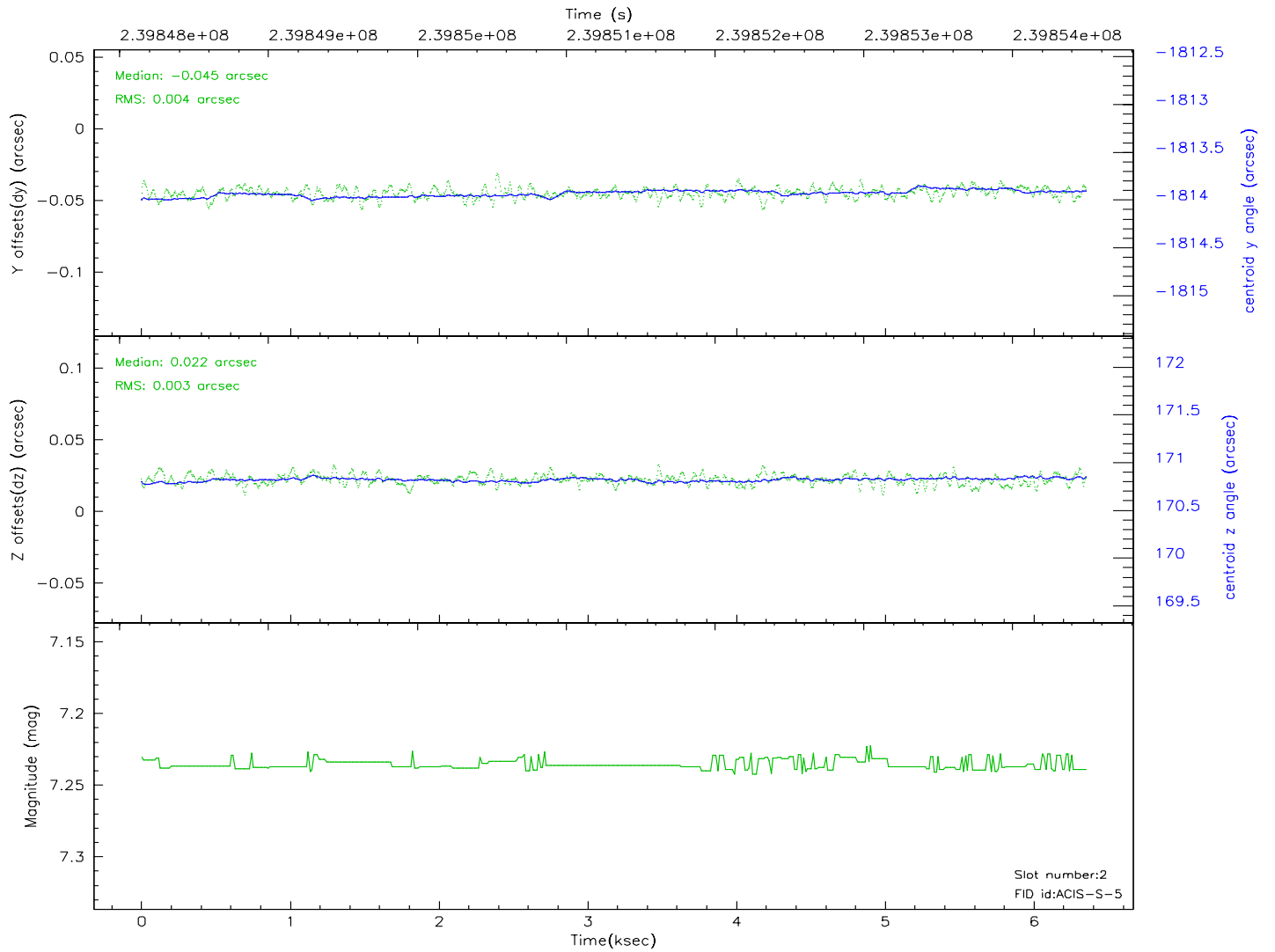
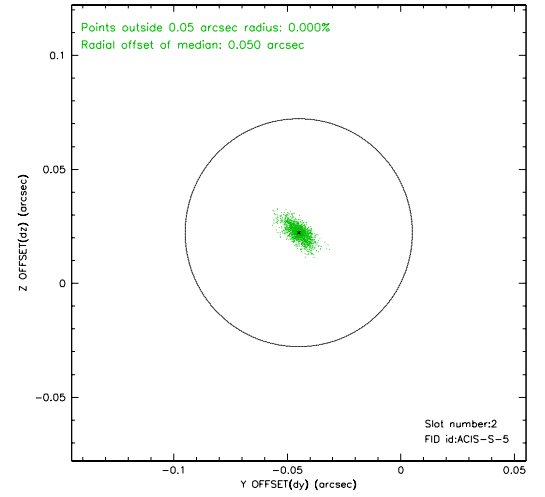
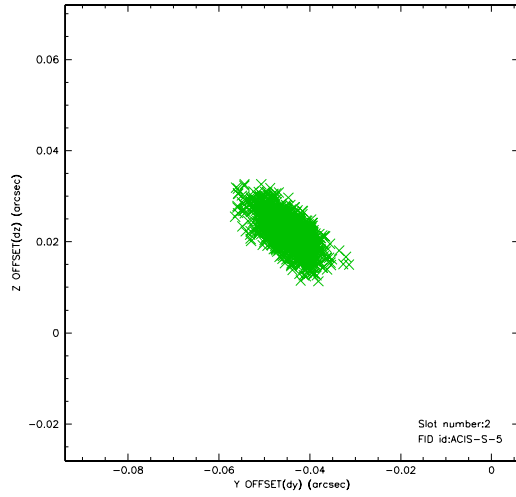
2.5.1 Slot 0



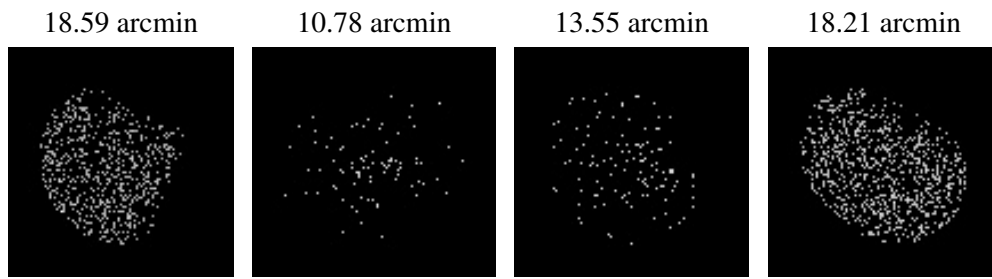
2.5.2 Slot 1



2.5.3 Slot 2



3 Point Sources



A Summary

A.1 Status

V&V Scientist	Jen Lauer
V&V Date (YYYY-MM-DD)	2006.03.20
V&V Edition	1
V&V Disposition and Status	OK
V&V Charge Time	6.2488

A.2 Comments

Events were collected on all chips before pointing was stabilized. These events are visible in the Level 1 event file, but are eliminated in the Level 2 event file because they fall outside the valid aspect range.