

V&V Reference Report

L2 ASCDS Version : 8.5.1.1

Observation 5698 - L2 Version 3
Chandra X-Ray Center

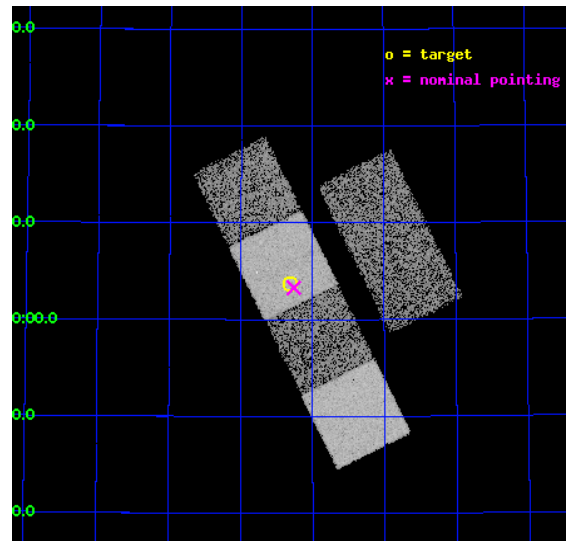
L2 Processing Date : Dec 24 2012

Contents

1	Front	2
2	OBI	3
2.1	OBI	3
2.1.1	Images	3
2.1.2	Bias	3
2.1.3	Parameters	4
2.1.4	Events	4
2.2	Compared Parameters	5
2.3	Aspect	6
2.4	Star Slots	9
2.4.1	Slot 3	9
2.4.2	Slot 4	10
2.4.3	Slot 5	11
2.4.4	Slot 6	12
2.4.5	Slot 7	13
2.5	FID Slots	14
2.5.1	Slot 0	14
2.5.2	Slot 1	15
2.5.3	Slot 2	16
A	Summary	17
A.1	Status	17
A.2	Comments	17

1 Front

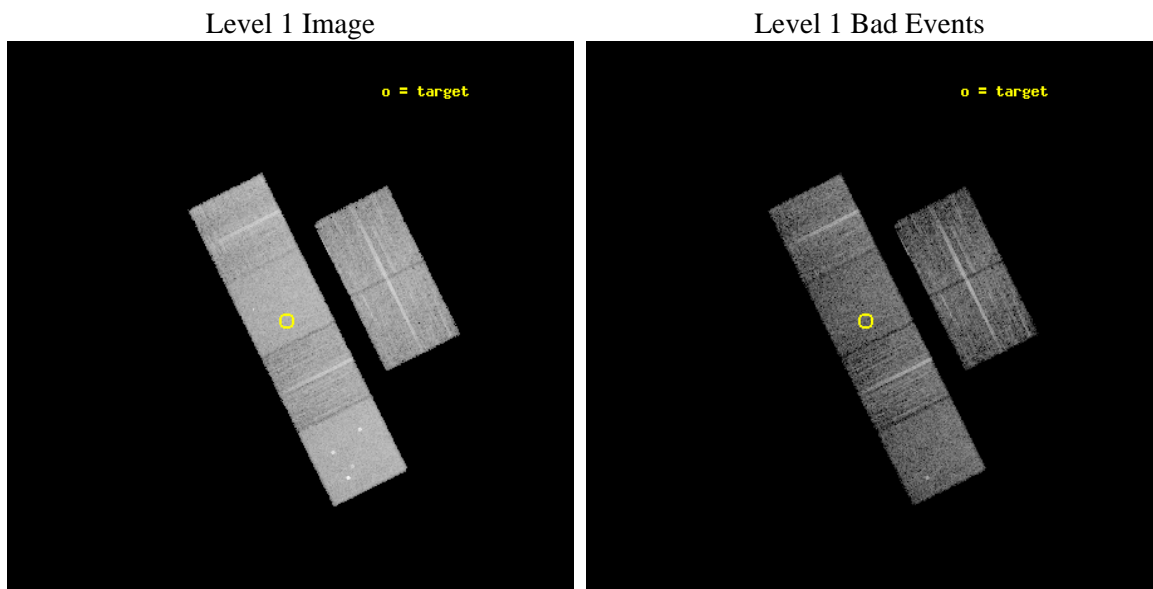
seq_num	701120	Sequence number
obs_id	5698	Observation id
title	Studying the X-ray properties of SDSS candidate Type II quasars with exploratory Chandra observations	Proposal title
observer	Dr Cristian Vignali	Principal investigator
object	SDSS J115718.35+600345.6	Source name
dtcycle	0	
cycle	P	events from which exps? Prim/Second/Both
ra_targ	179.326667	Observer's specified target RA [deg]
dec_targ	60.062667	Observer's specified target Dec [deg]
ra_nom	179.31524172314	Nominal RA [deg]
dec_nom	60.054913833069	Nominal Dec [deg]
roll_nom	243.52937323491	Nominal Roll [deg]
revision	3	Processing version of data
ontime	7055.9999737144	Sum of GTIs [s]
livetime	6966.6526534341	Livetime [s]
ontime2	7055.9999737144	Sum of GTIs [s]
ontime3	7055.9999737144	Sum of GTIs [s]
ontime5	7055.9999737144	Sum of GTIs [s]
ontime6	7055.9999737144	Sum of GTIs [s]
ontime7	7055.9999737144	Sum of GTIs [s]
ontime8	7055.9943574667	Sum of GTIs [s]
l2events	85640	Number of level 2 events



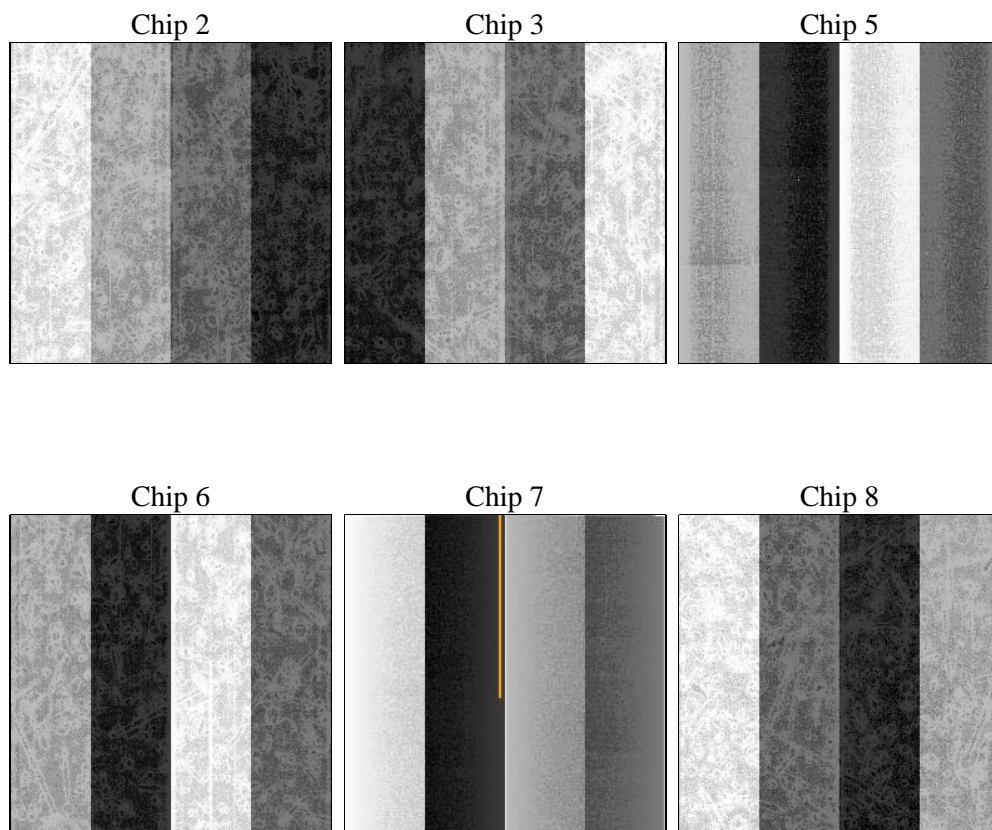
2 OBI

2.1 OBI

2.1.1 Images



2.1.2 Bias



2.1.3 Parameters

obi_num	0	Obi number	sched_exp_time	7000.000000	[s] Scheduled observation exposure time
ascdsver	8.5.1.1	Processing system revision	ontime	7055.9999737144	Sum of GTIs [s]
caldsver	4.5.5	 	ontime2	7055.9999737144	Sum of GTIs [s]
date	2012-12-24T11:42:13	Date and time of file creation	ontime3	7055.9999737144	Sum of GTIs [s]
revision	3	Processing version of data	ontime5	7055.9999737144	Sum of GTIs [s]
			ontime6	7055.9999737144	Sum of GTIs [s]
			ontime7	7055.9999737144	Sum of GTIs [s]
			ontime8	7055.9943574667	Sum of GTIs [s]
			l1events	374604	Number of level 1 events

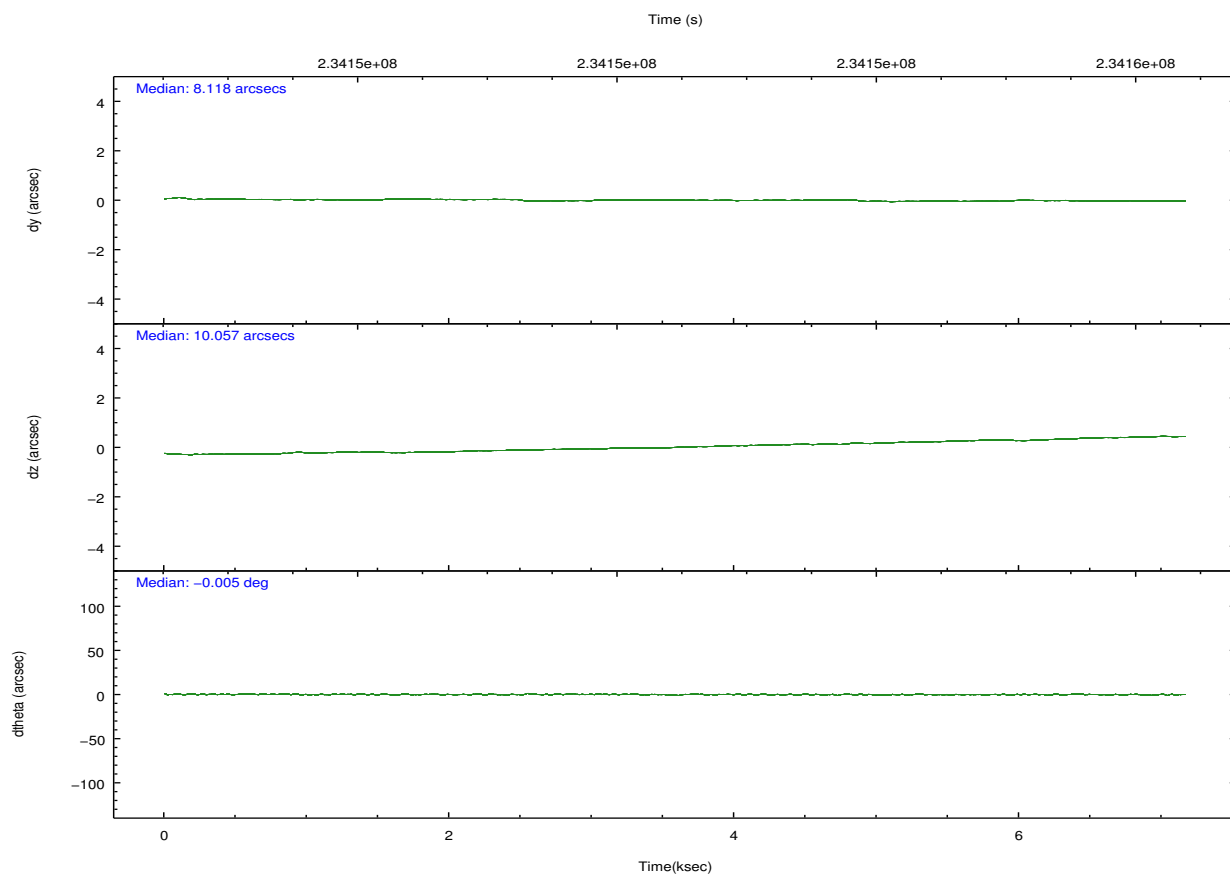
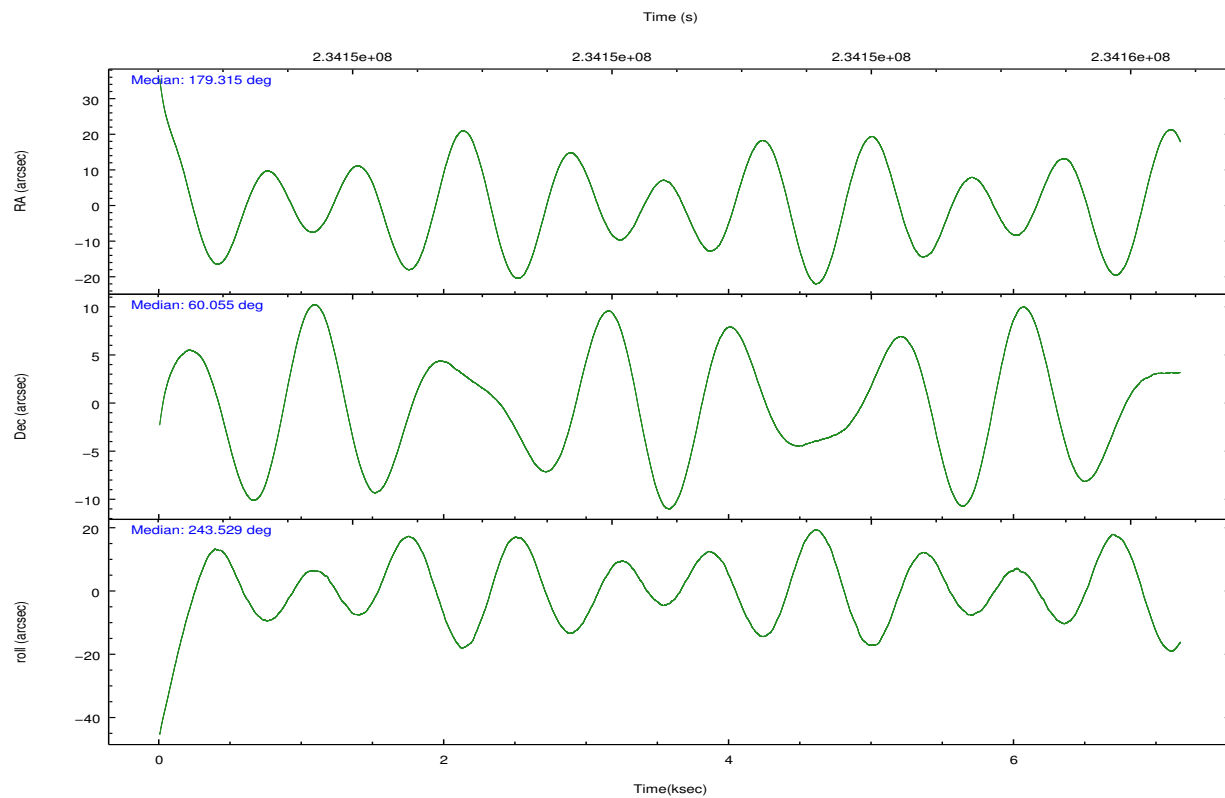
2.1.4 Events

	ccd 2	ccd 3	ccd 5	ccd 6	ccd 7	ccd 8		ccd 2	ccd 3	ccd 5	ccd 6	ccd 7	ccd 8
level 1 events	52276	49516	80748	53653	72702	65709	grade 0 events	2724	2603	4514	2580	2733	4400
rejected events	46034	43510	43346	47332	42725	51630		5%	5%	5%	4%	3%	6%
rejected %	88%	87%	53%	88%	58%	78%	grade 1 events	34	31	208	29	66	42
								0%	0%	0%	0%	0%	0%
							grade 2 events	1218	1175	11224	1231	6052	3165
								2%	2%	13%	2%	8%	4%
							grade 3 events	619	577	1344	594	2591	1447
								1%	1%	1%	1%	3%	2%
							grade 4 events	620	602	1248	561	2562	1393
								1%	1%	1%	1%	3%	2%
							grade 5 events	2207	2332	5867	2454	6930	3254
								4%	4%	7%	4%	9%	4%
							grade 6 events	1066	1054	19110	1358	16061	3681
								2%	2%	23%	2%	22%	5%
							grade 7 events	43788	41142	37233	44846	35707	48327
								83%	83%	46%	83%	49%	73%

2.2 Compared Parameters

Parameter	Planned	Actual	Parameter	Planned	Actual
Instrument	ACIS	ACIS	Obspar format version number	7	7
Detector	ACIS-235678	ACIS-235678	Obspar file type	PREDICTED	ACTUAL
Grating	NONE	NONE	Obspar update status	NONE	UPDATED
Data mode	FAINT	FAINT	Number of optional ACIS chips dropped	0	0
Observation mode	POINTING	POINTING	On-chip summing requested	N	N
[deg] Pointing RA	179.311031	179.3152417231372	Subarray requested	NONE	NONE
[deg] Pointing Dec	60.082049	60.0549138330695	Alternating exposures requested	N	N
[deg] Pointing Roll	243.376411	243.529373234915	[s] Primary exposure time	0.000000	3.2
[mm] SIM focus pos	-0.684267	-0.6828225247311905			
[mm] SIM defocus	0	0.001444936568705701			
[mm] SIM translation stage pos	-190.132523	-190.1400660498719			
[mm] SIM translation stage offset	0	0.00754346686406393			
[s] Observation start time (MET)	234149037.184000	234148026.39919			
Observation start date	2005-06-03T01:22:53	2005-06-03T01:07:06			
[s] Observation end time (MET)	234156037.184000	234156703.02459			
Observation end date	2005-06-03T03:19:33	2005-06-03T03:31:43			
Read mode	TIMED	TIMED			

2.3 Aspect

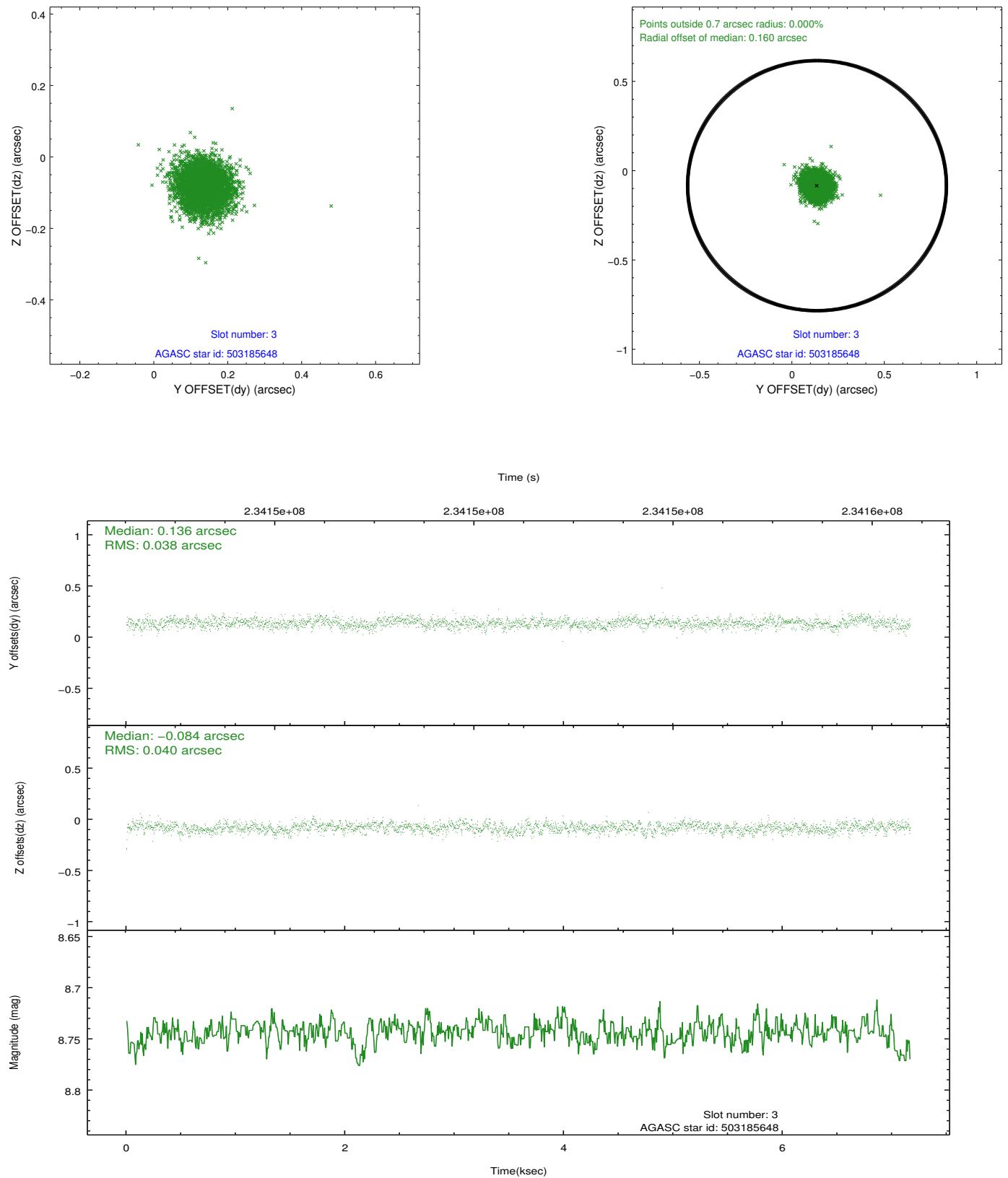


Slot Statistics

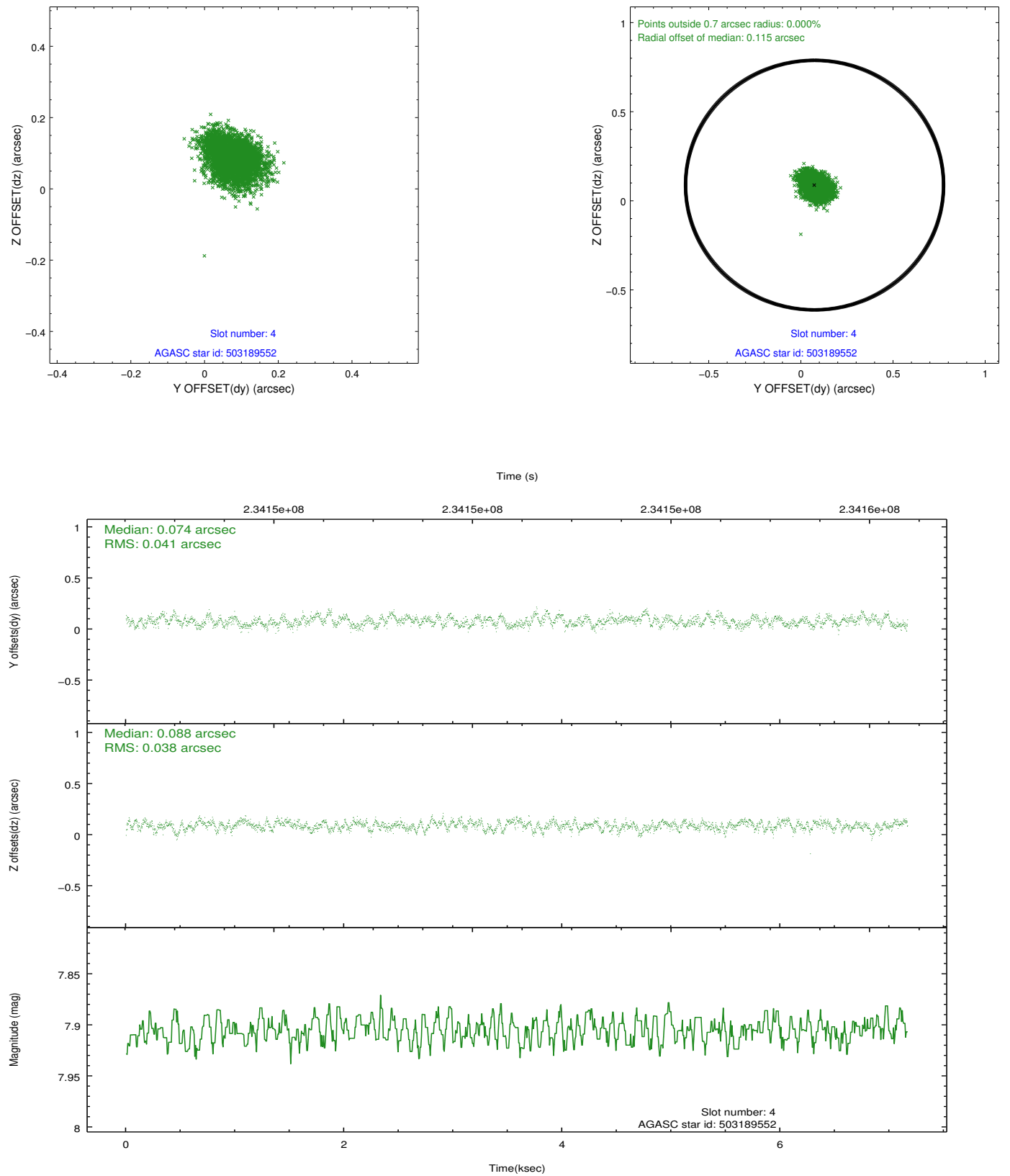
slot	status	id	mag	n_pts	med_dy	med_dz	dr1	dr2	ra	dec	mean_y	mean_z
0	FID	ACIS-S-2	7.11	1748	-0.042	-0.028	0.009	0.014	0.000000	0.000000	-760.90	-1731.38
1	FID	ACIS-S-4	7.21	1748	0.124	0.028	0.006	0.010	0.000000	0.000000	2152.13	176.39
2	FID	ACIS-S-5	7.23	1748	-0.113	0.009	0.009	0.016	0.000000	0.000000	-1812.83	170.87
3	GUIDE	503185648	8.74	3493	0.136	-0.084	0.058	0.094	178.966414	59.673816	1594.01	98.08
4	GUIDE	503189552	7.90	3497	0.074	0.088	0.061	0.096	178.496507	59.680458	1948.73	-679.34
5	GUIDE	544480840	8.40	3497	-0.021	0.020	0.061	0.101	179.961120	60.158701	-772.44	914.53
6	GUIDE	544481720	8.66	3497	-0.059	-0.029	0.069	0.111	179.183884	60.522144	-1315.34	-911.15
7	GUIDE	544481768	7.34	3495	-0.131	0.008	0.057	0.088	179.454019	60.461508	-1335.14	-385.60

2.4 Star Slots

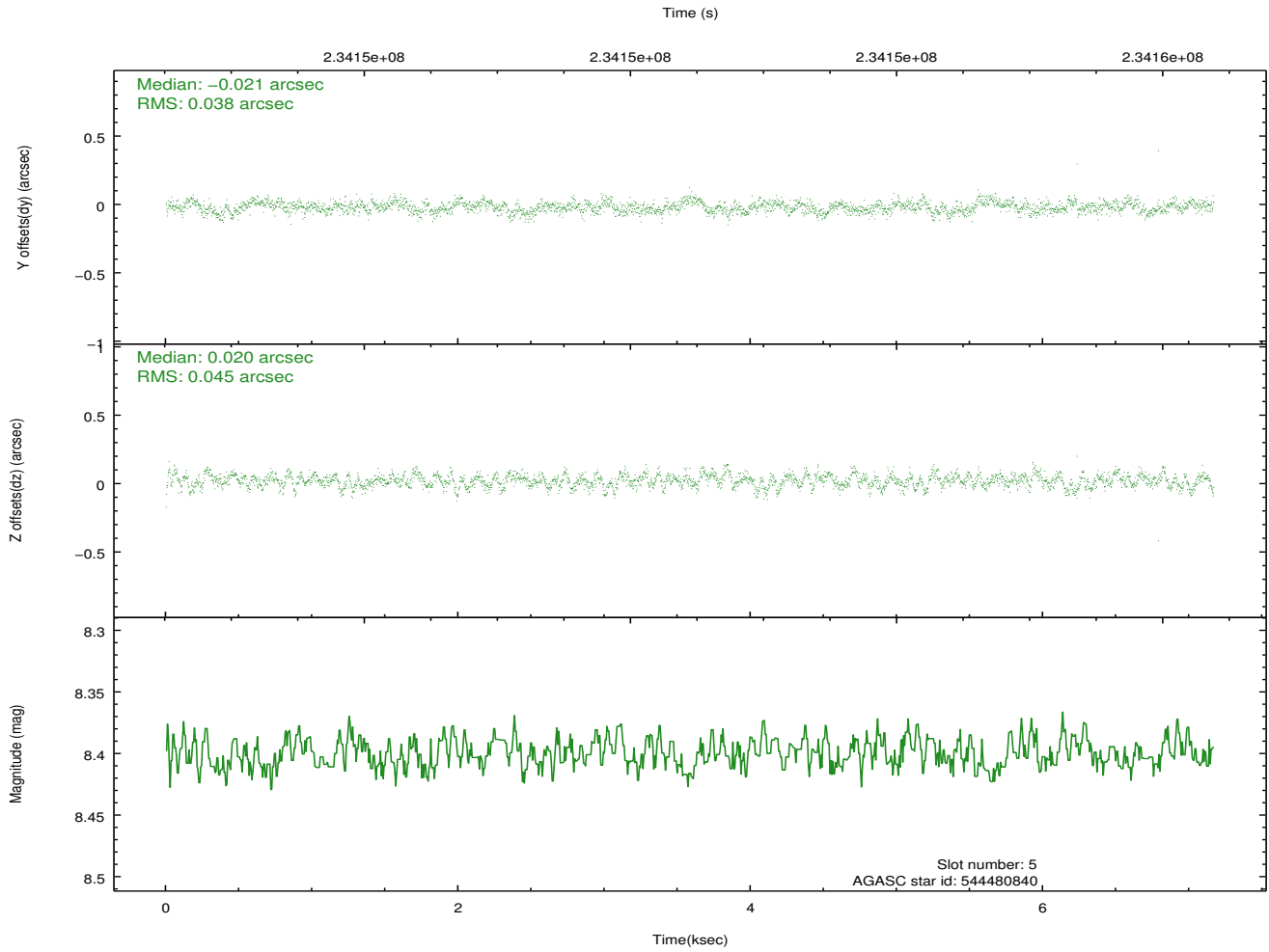
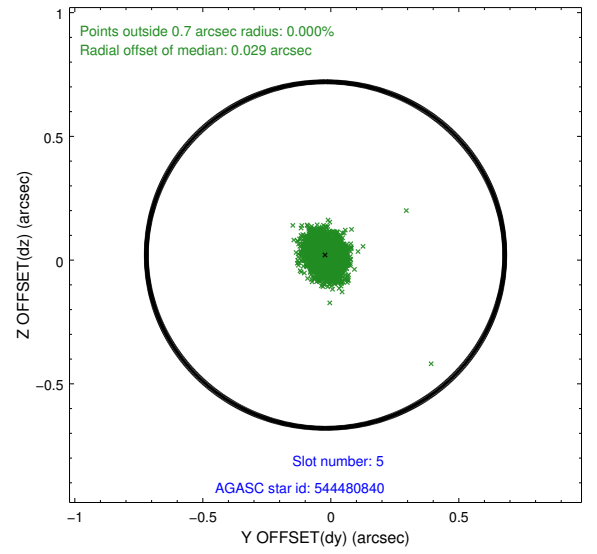
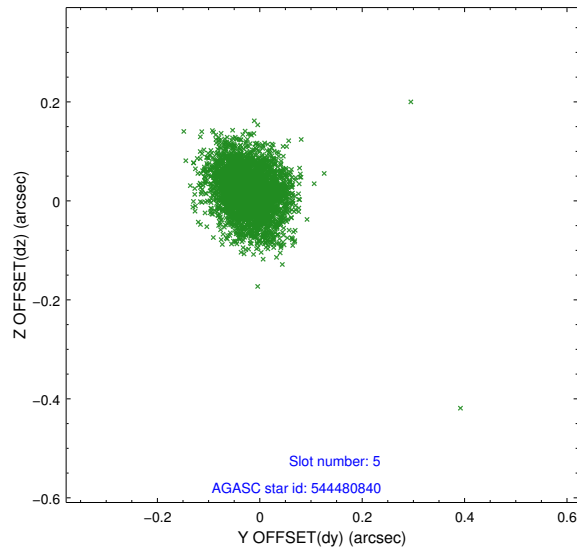
2.4.1 Slot 3



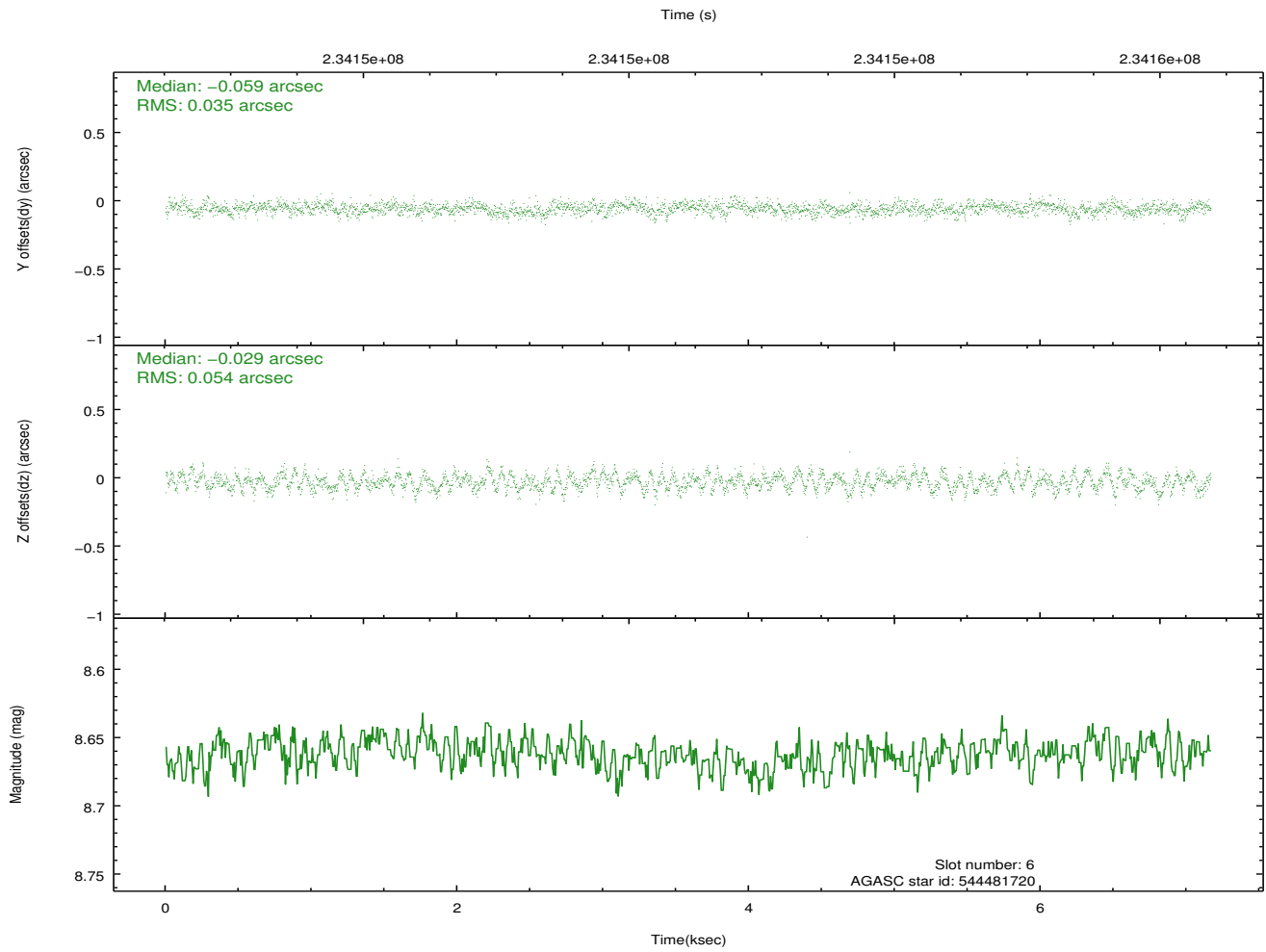
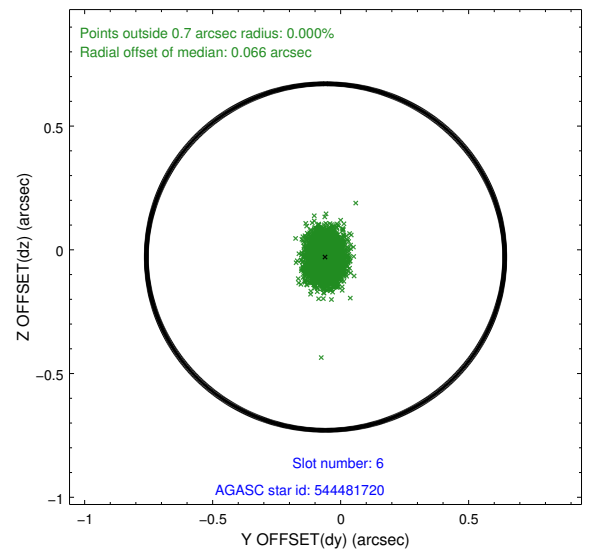
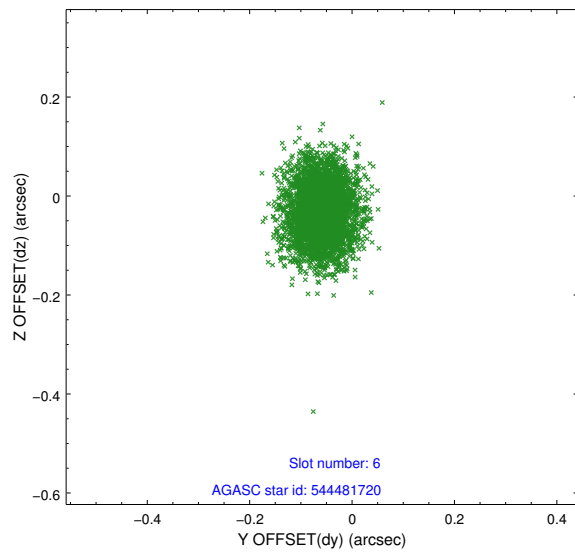
2.4.2 Slot 4



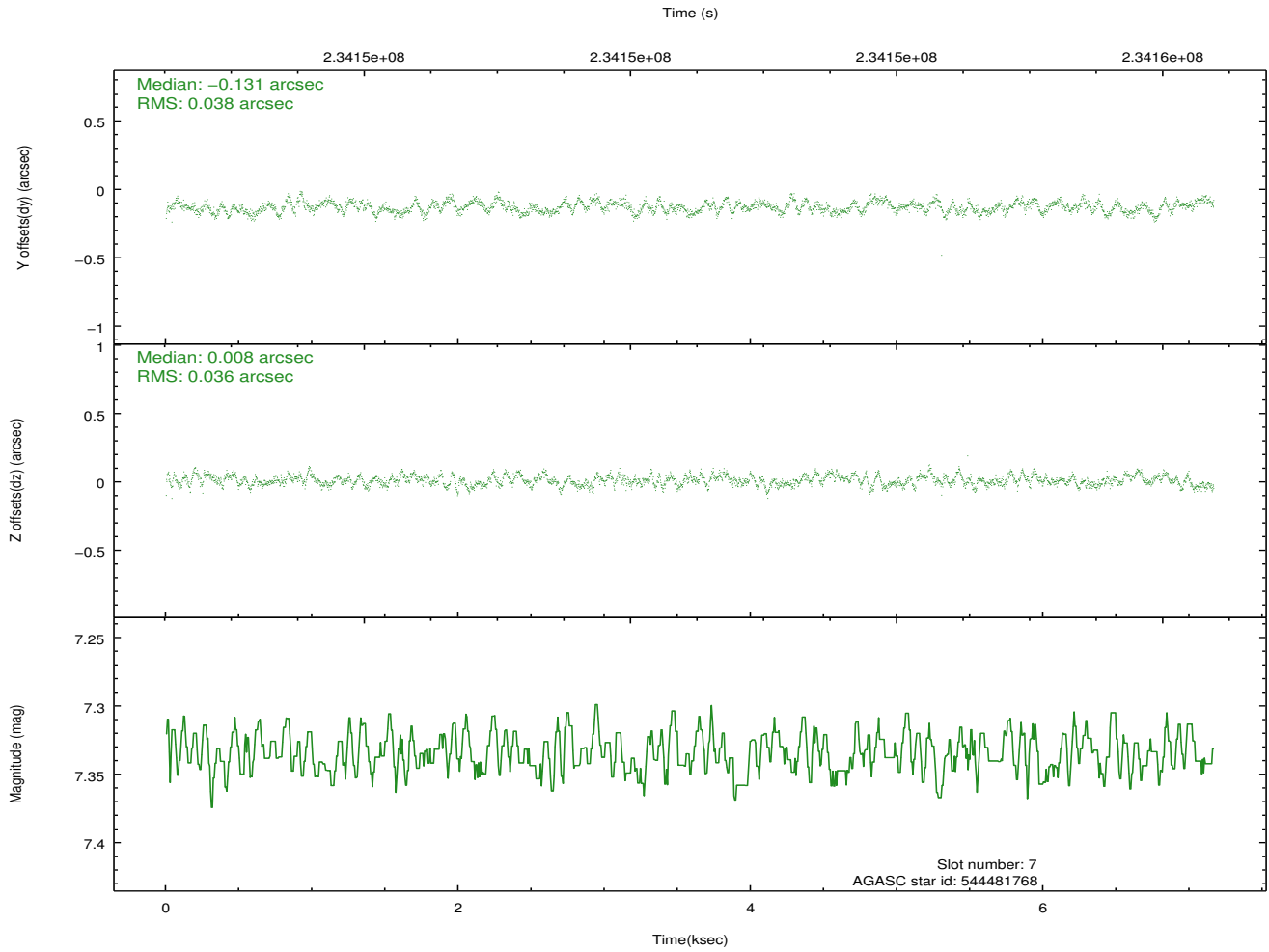
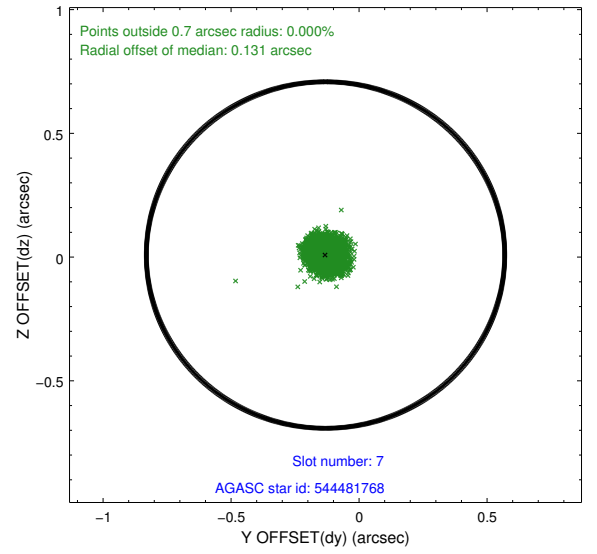
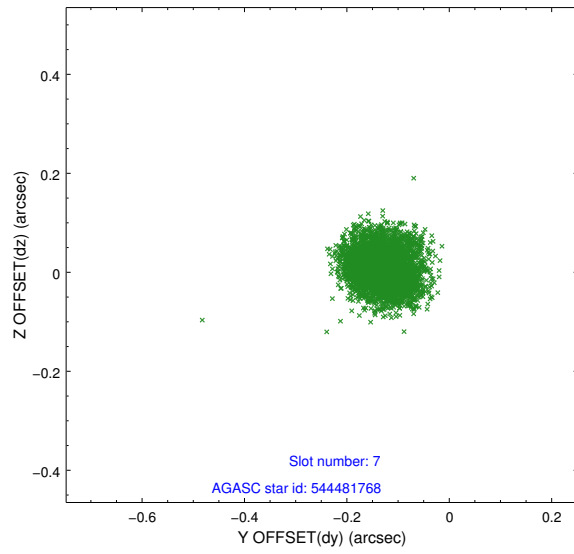
2.4.3 Slot 5



2.4.4 Slot 6

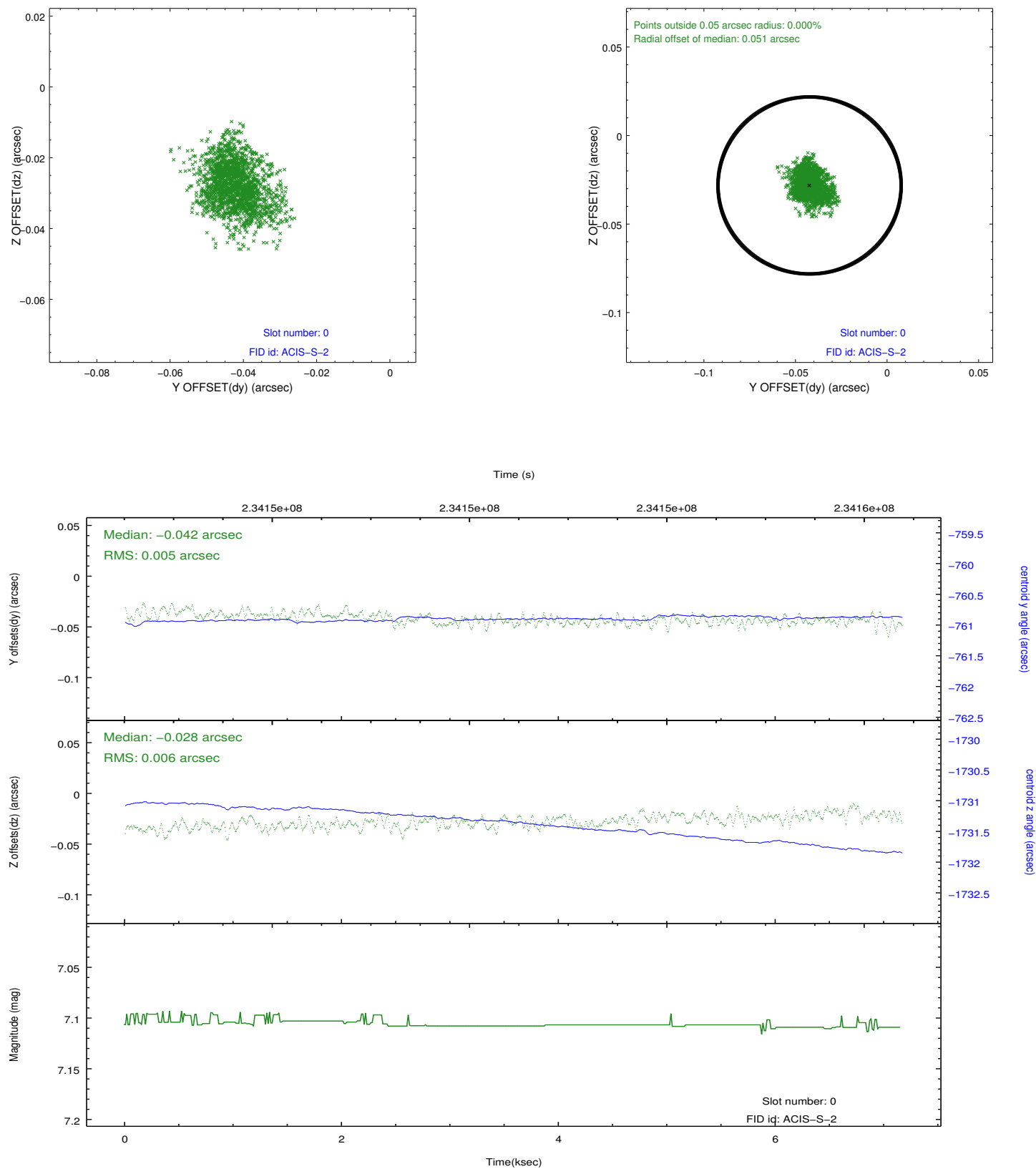


2.4.5 Slot 7

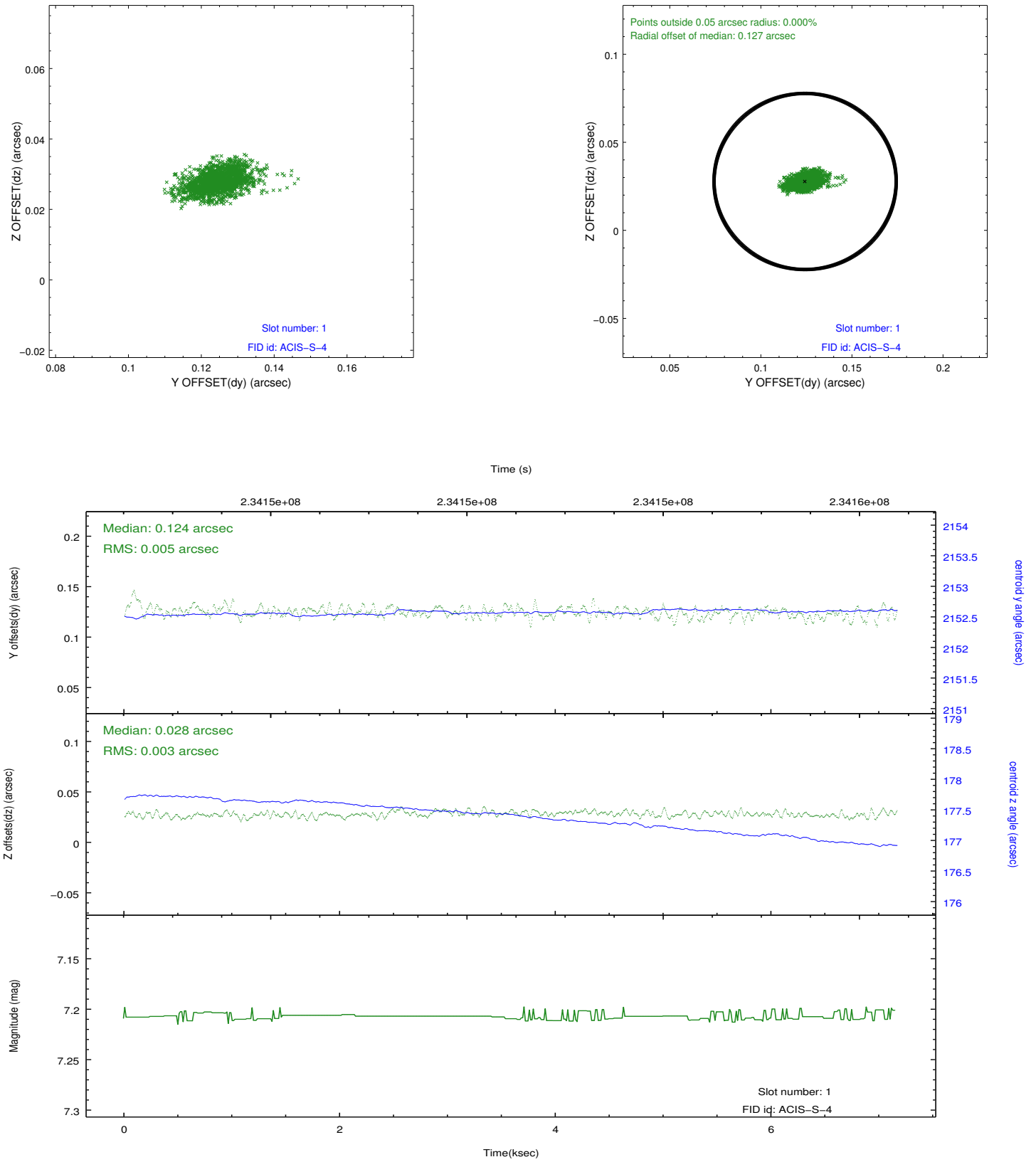


2.5 FID Slots

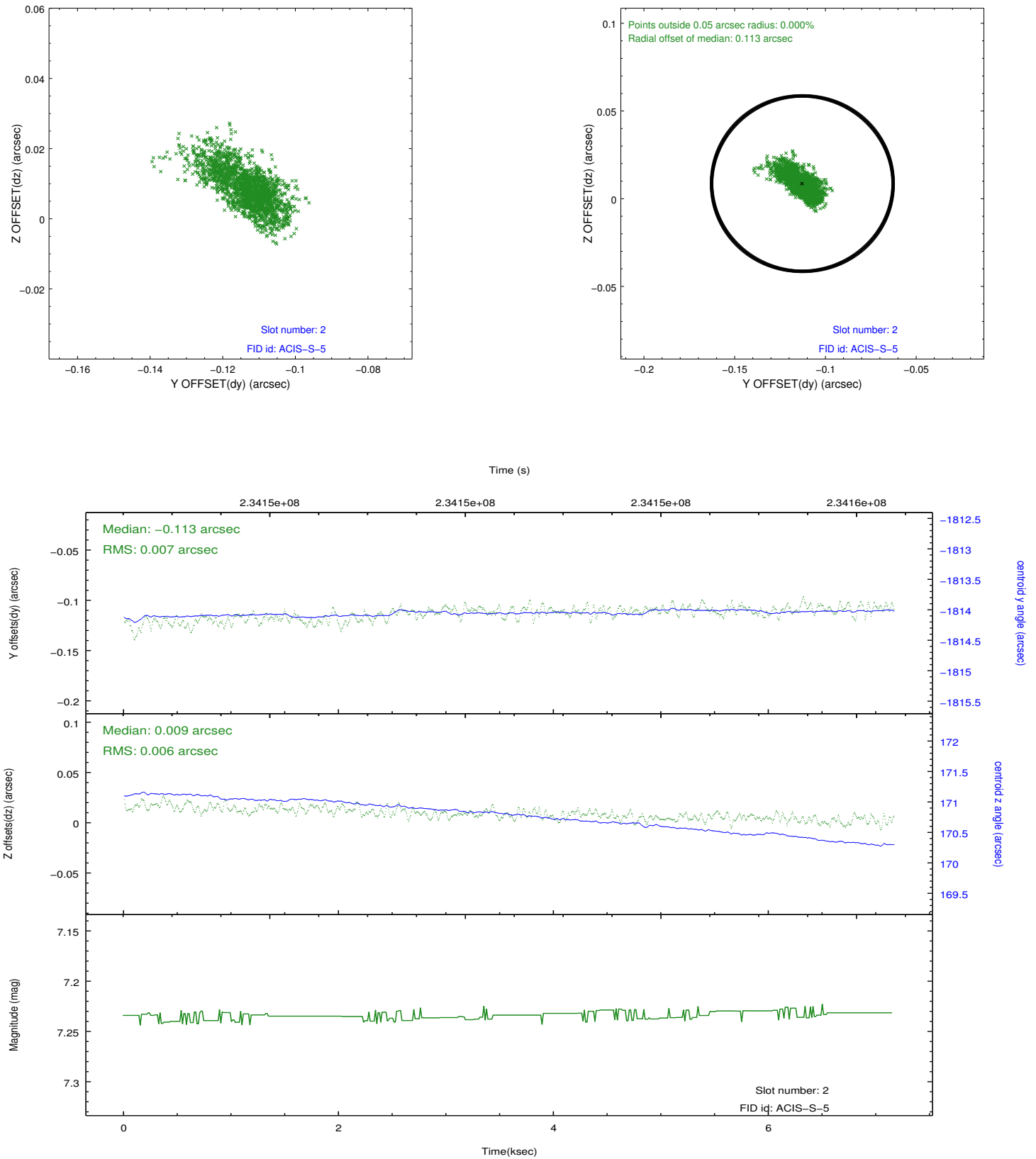
2.5.1 Slot 0



2.5.2 Slot 1



2.5.3 Slot 2



A Summary

A.1 Status

V&V Scientist	Jen Lauer
V&V Date (YYYY-MM-DD)	2013.01.16
V&V Edition	1
V&V Disposition and Status	OK
V&V Charge Time	7.055999

A.2 Comments