

V&V Reference Report

L2 ASCDS Version : 7.6.7

Observation 5697 - L2 Version 002
Chandra X-Ray Center

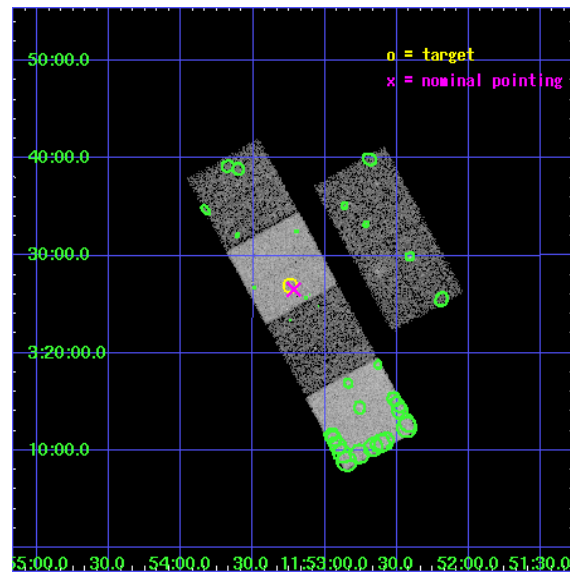
L2 Processing Date: Feb 28 2006

Contents

1	Front	2
2	OBI	3
2.1	OBI	3
2.1.1	Images	3
2.1.2	Bias	3
2.1.3	Parameters	4
2.1.4	Events	4
2.2	Compared Parameters	5
2.3	Aspect	6
2.4	Star Slots	9
2.4.1	Slot 3	9
2.4.2	Slot 4	10
2.4.3	Slot 5	11
2.4.4	Slot 6	12
2.4.5	Slot 7	13
2.5	FID Slots	14
2.5.1	Slot 0	14
2.5.2	Slot 1	15
2.5.3	Slot 2	16
3	Point Sources	17
A	Summary	18
A.1	Status	18
A.2	Comments	18

1 Front

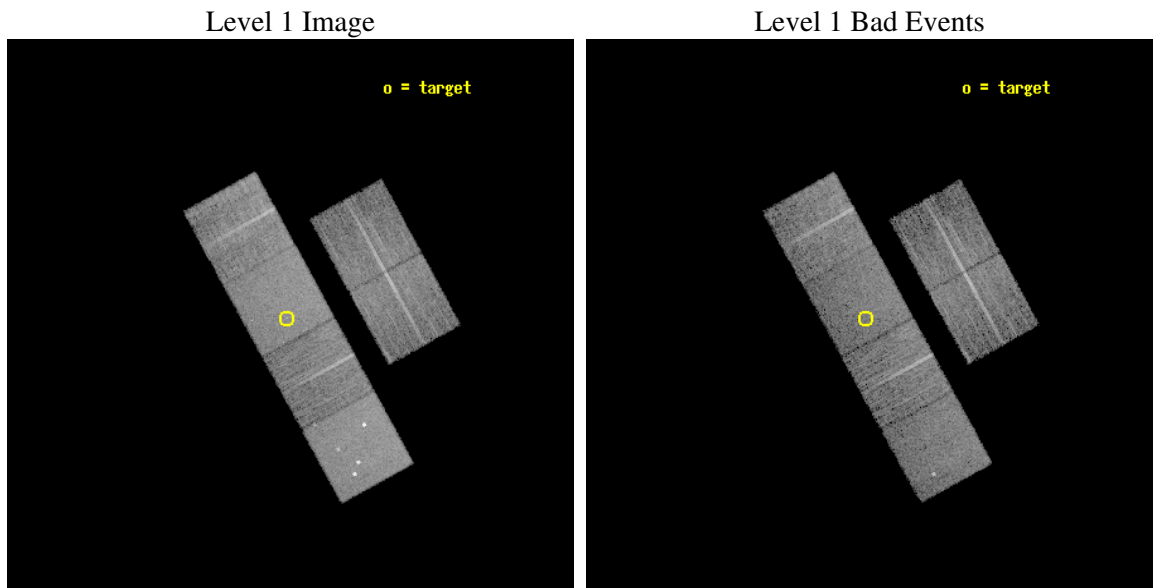
seq_num	701119
obs_id	5697
title	Studying the X-ray properties of SDSS candidate Type II quasars with exploratory Chandra observations
observer	Dr. Cristian Vignali
object	SDSS J115314.36+032658.6
dtcycle	0
cycle	P
ra_targ	178.31
dec_targ	3.449611
ra_nom	178.30386951057
dec_nom	3.4420654154825
roll_nom	241.18081510678
revision	2
ontime	8278.3999691606
livetime	8173.573884097
ontime2	8278.3999691606
ontime3	8278.3999691606
ontime5	8278.3999691606
ontime6	8278.3999691606
ontime7	8278.3999691606
ontime8	8278.3999691606
l2events	99245



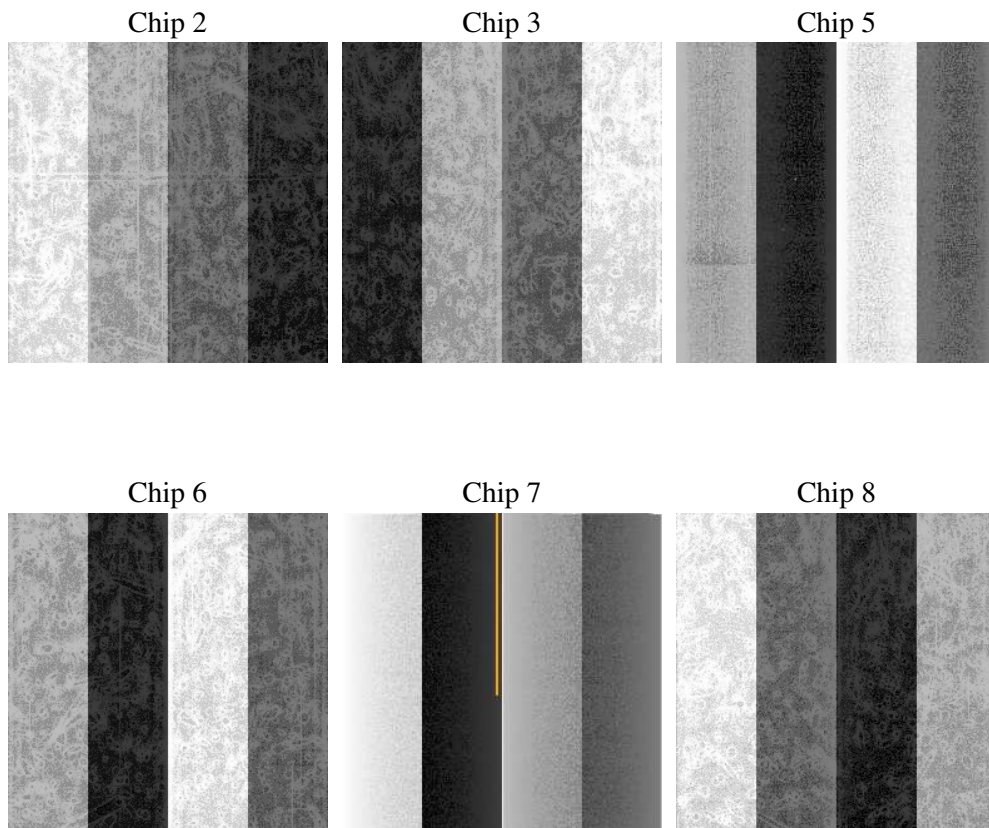
2 OBI

2.1 OBI

2.1.1 Images



2.1.2 Bias



2.1.3 Parameters

obi_num	0
ascdsver	7.6.7
caldsver	3.2.1
date	2006-02-28T17:30:05
revision	2

sched_exp_time	8100.000000
ontime	9204.4760785103
ontime2	9204.4760785103
ontime3	9204.4760785103
ontime5	9204.4760785103
ontime6	9204.4760785103
ontime7	9204.4760785103
ontime8	9204.4760785103
l1events	507539

2.1.4 Events

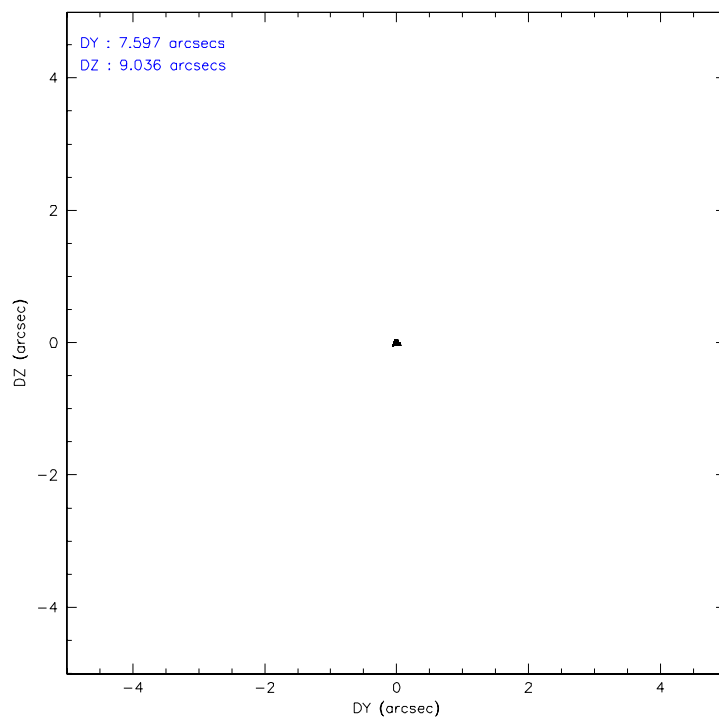
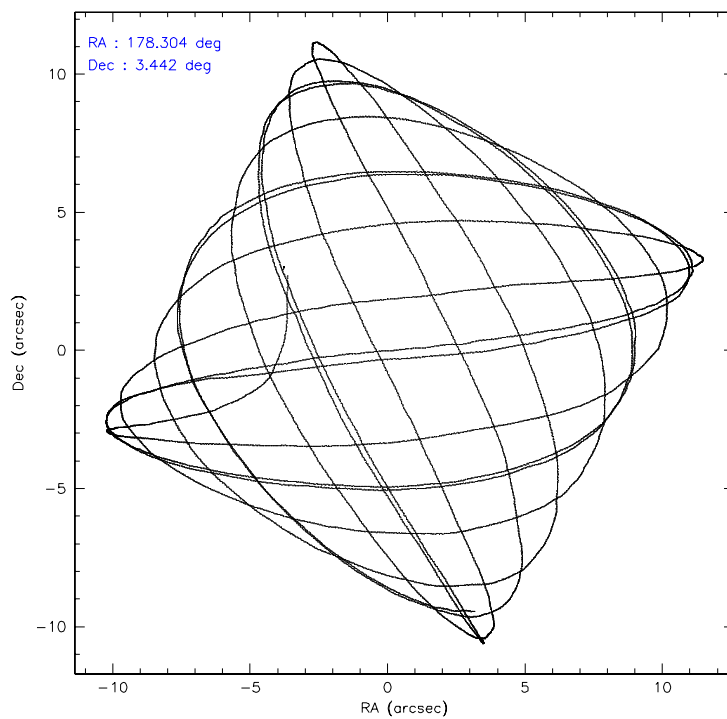
	ccd 2	ccd 3	ccd 5	ccd 6	ccd 7	ccd 8
level 1 events	71605	66427	109664	73580	96787	89476
rejected events	63520	58843	64593	65933	63898	72277
rejected %	88%	88%	58%	89%	66%	80%

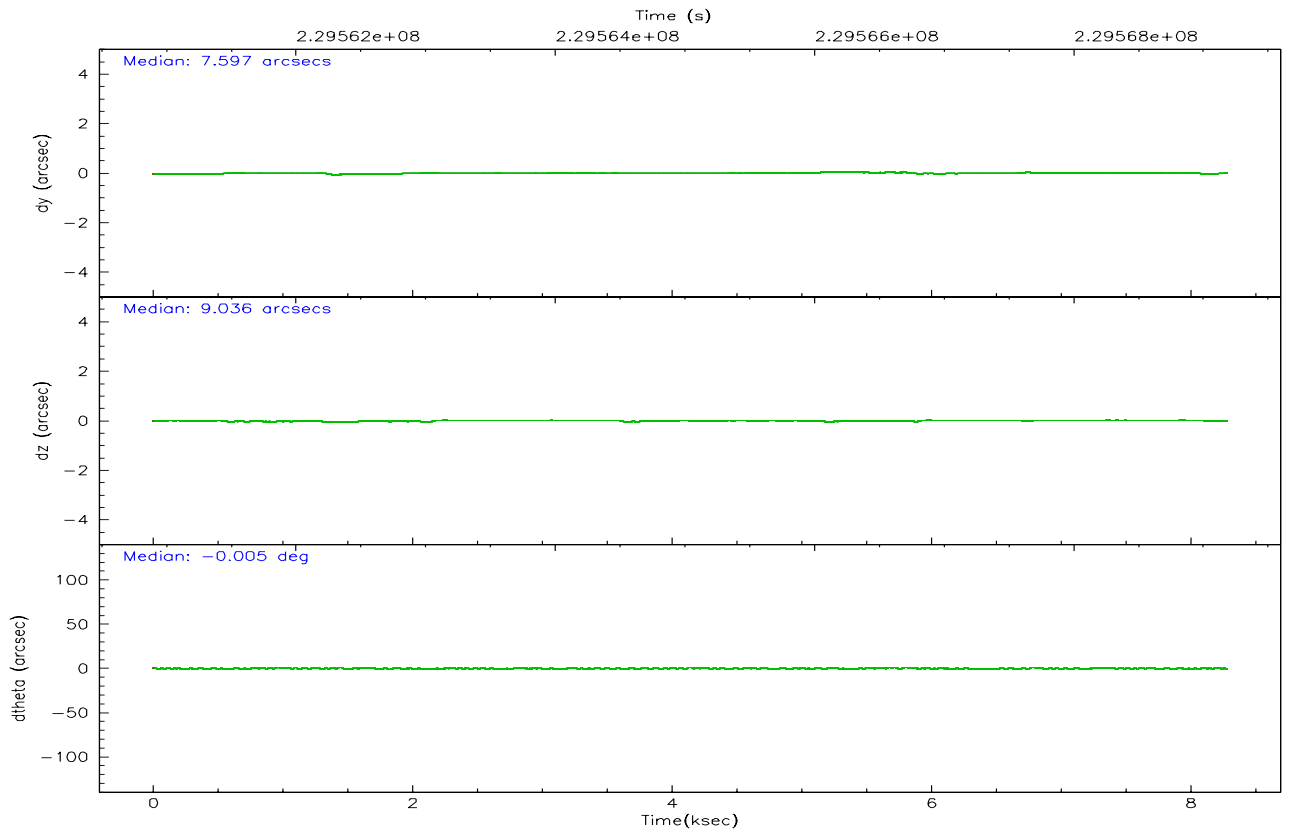
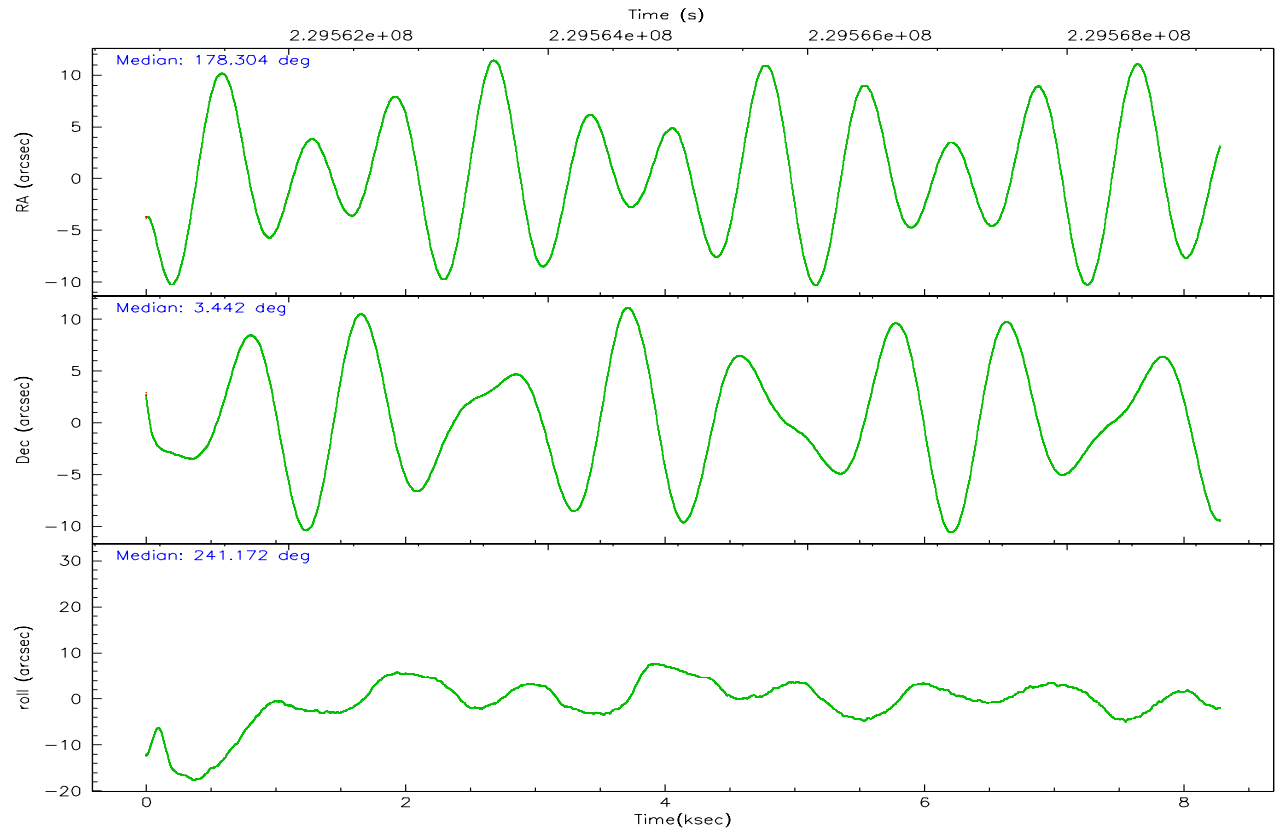
	ccd 2	ccd 3	ccd 5	ccd 6	ccd 7	ccd 8
grade 0 events	4344	3716	6303	3515	2209	6204
	6%	5%	5%	4%	2%	6%
grade 1 events	39	41	137	40	59	59
	0%	0%	0%	0%	0%	0%
grade 2 events	1720	1658	15314	1801	9367	4346
	2%	2%	13%	2%	9%	4%
grade 3 events	750	825	1010	776	1803	2050
	1%	1%	0%	1%	1%	2%
grade 4 events	773	794	969	842	1678	2002
	1%	1%	0%	1%	1%	2%
grade 5 events	2855	3206	5228	3272	5995	4469
	3%	4%	4%	4%	6%	4%
grade 6 events	1345	1462	26719	1762	21877	5077
	1%	2%	24%	2%	22%	5%
grade 7 events	59779	54725	53984	61572	53799	65269
	83%	82%	49%	83%	55%	72%

2.2 Compared Parameters

Parameter	Planned	Actual	Parameter	Planned	Actual
Instrument	ACIS	ACIS	Obspar format version number	6	6
Detector	ACIS-235678	ACIS-235678	Obspar file type	PREDICTED	ACTUAL
Grating	NONE	NONE	Obspar update status	NONE	UPDATED
Data mode	FAINT	FAINT	On-chip summing requested	N	N
Observation mode	POINTING	POINTING	Subarray requested	NONE	NONE
Pointing RA	178.302982	178.3038695105671	Alternating exposures requested	N	N
Pointing Dec	3.469302	3.442065415482457	Primary exposure time	0.000000	3.2
Pointing Roll	241.024242	241.1808151067752			
SIM focus pos (mm)	-0.684267	-0.6828225247311905			
SIM defocus (mm)	0	0.001444936568705701			
SIM translation stage pos (mm)	-190.132523	-190.145094680475			
SIM translation stage offset (mm)	0	0.01257209746719923			
Observation start time	229561077.184000	229559545.0153			
Observation start date	2005-04-10T22:56:53	2005-04-10T22:32:25			
Observation end time	229569177.184000	229570140.44078			
Observation end date	2005-04-11T01:11:53	2005-04-11T01:29:00			
Read mode	TIMED	TIMED			

2.3 Aspect



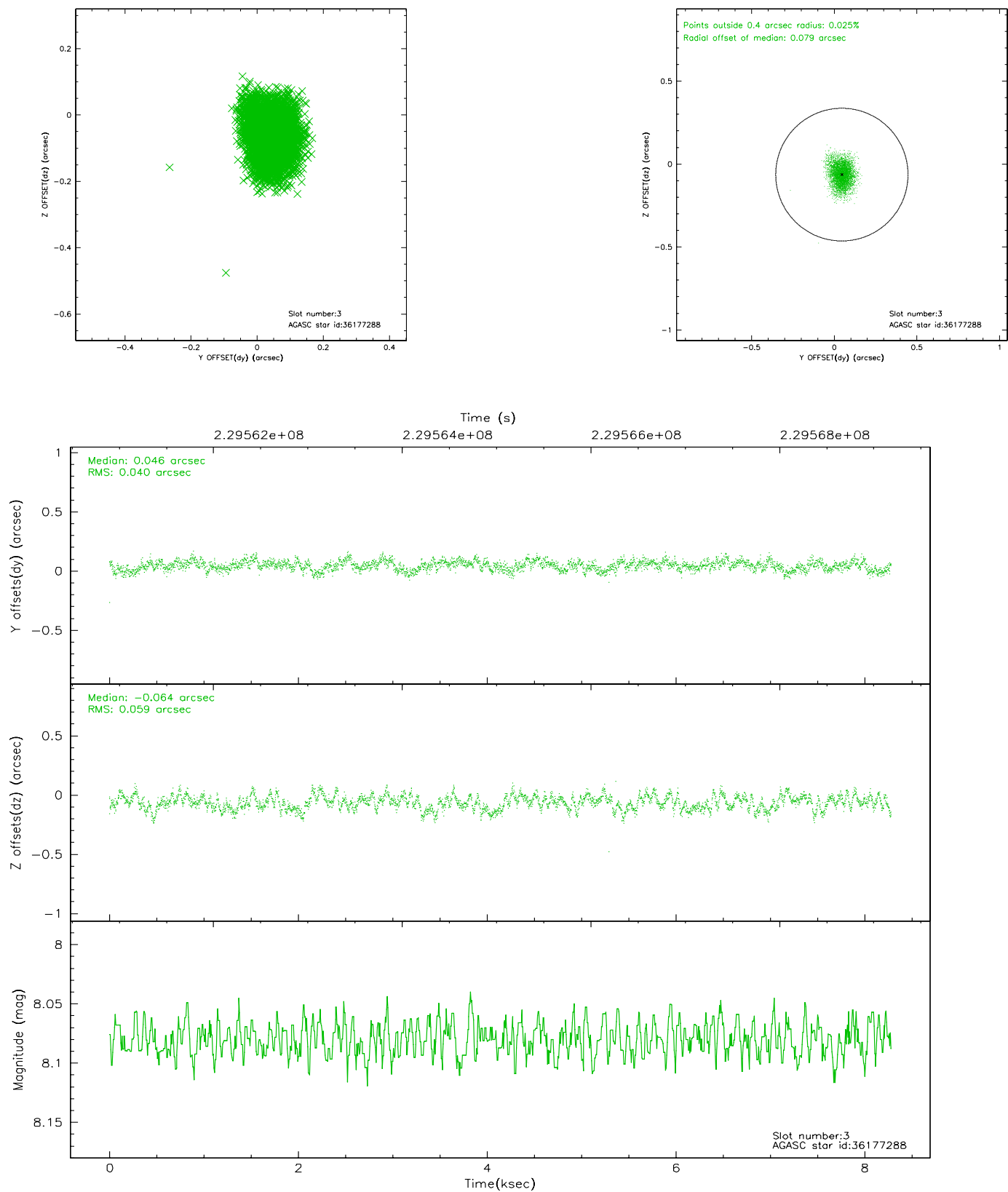


Slot Statistics

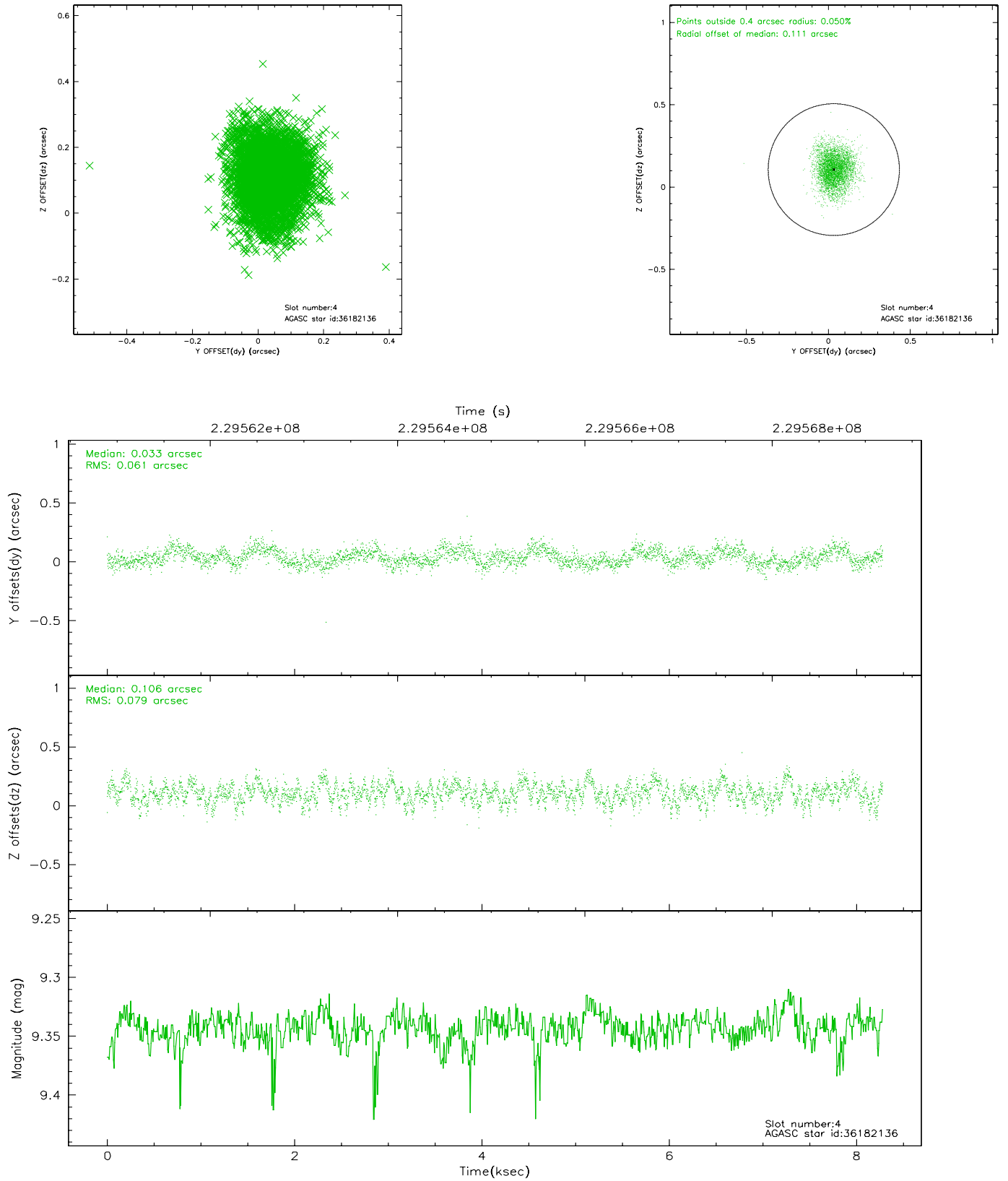
slot	status	id	mag	n_pts	med_dy	med_dz	dr1	dr2	ra	dec	mean_y	mean_z
0	FID	ACIS-S-2	7.11	2021	-0.010	-0.015	0.007	0.012	0.000000	0.000000	-760.35	-1730.17
1	FID	ACIS-S-4	7.21	2021	0.040	0.009	0.005	0.008	0.000000	0.000000	2152.65	177.67
2	FID	ACIS-S-5	7.24	2019	-0.061	0.014	0.007	0.011	0.000000	0.000000	-1812.40	172.07
3	GUIDE	36177288	8.08	4042	0.046	-0.064	0.075	0.124	178.779743	3.218634	-41.19	1936.11
4	GUIDE	36182136	9.34	4035	0.033	0.106	0.105	0.173	177.980361	3.762317	-361.14	-1524.37
5	GUIDE	36183400	9.33	4035	0.043	-0.002	0.085	0.135	178.147022	3.151997	1270.95	62.83
6	GUIDE	36183880	8.53	4041	0.013	-0.042	0.099	0.149	178.107077	3.094976	1521.15	36.74
7	GUIDE	36185104	9.35	4041	-0.122	0.016	0.218	0.311	178.492899	3.230860	420.44	1013.15

2.4 Star Slots

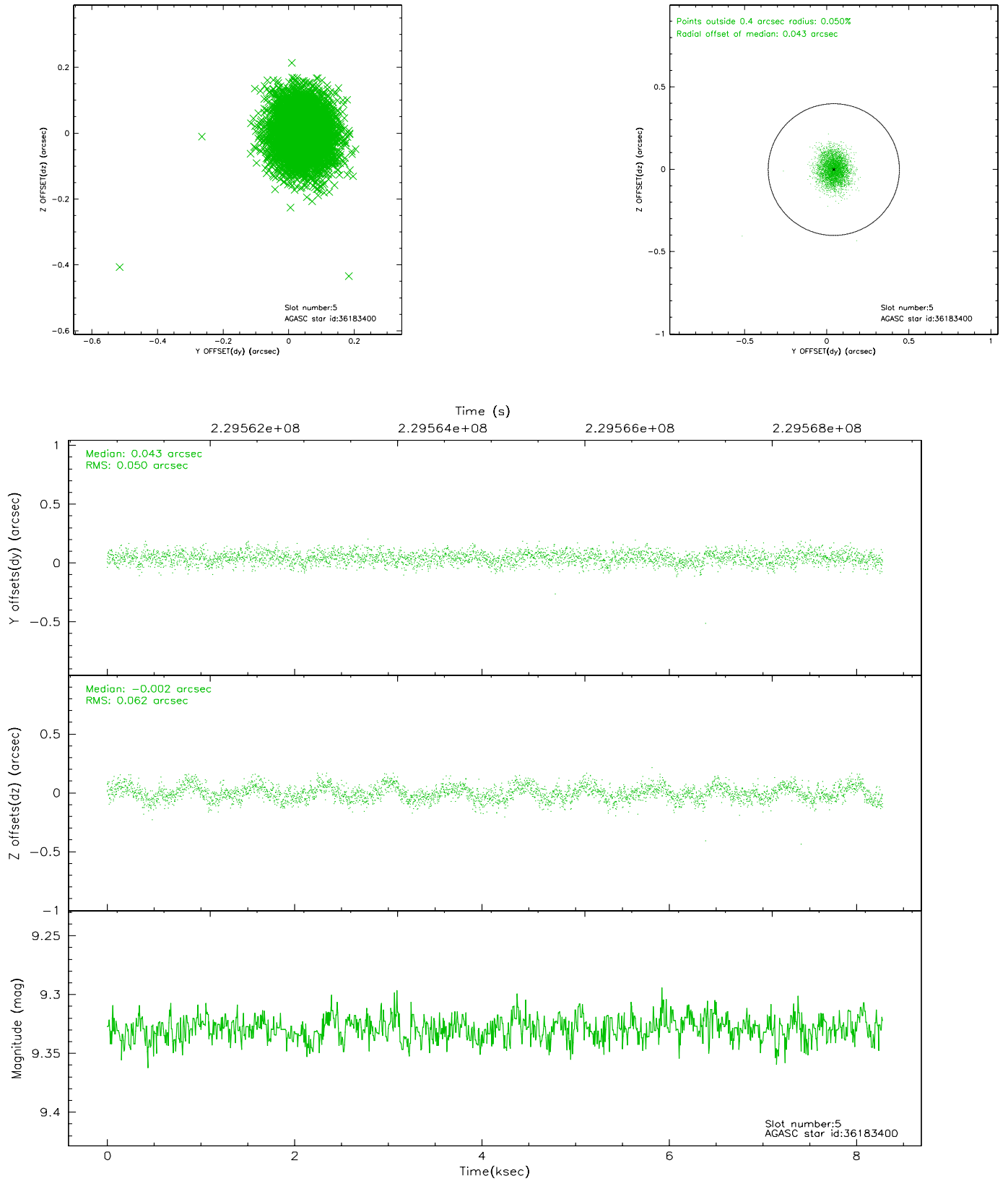
2.4.1 Slot 3



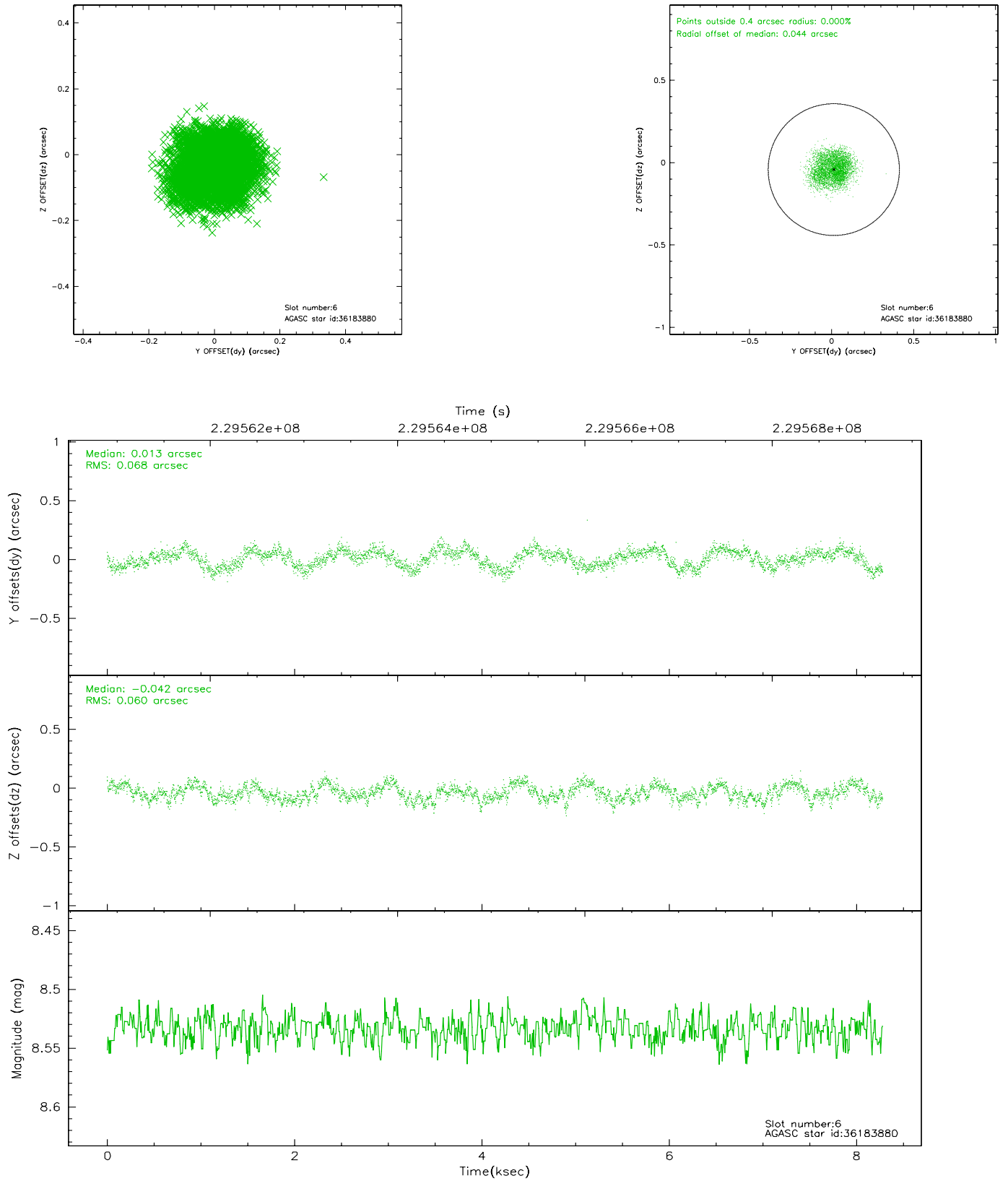
2.4.2 Slot 4



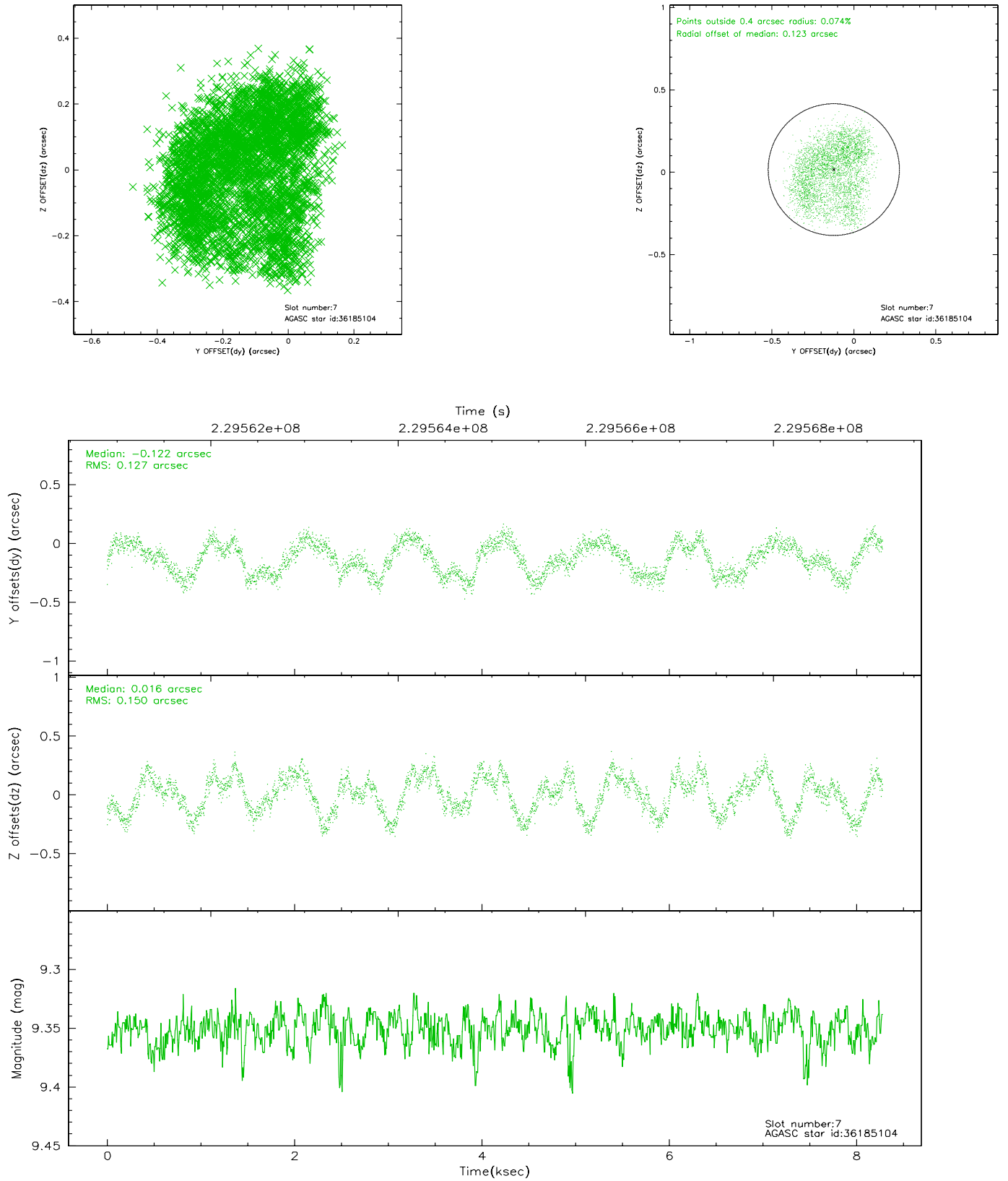
2.4.3 Slot 5



2.4.4 Slot 6

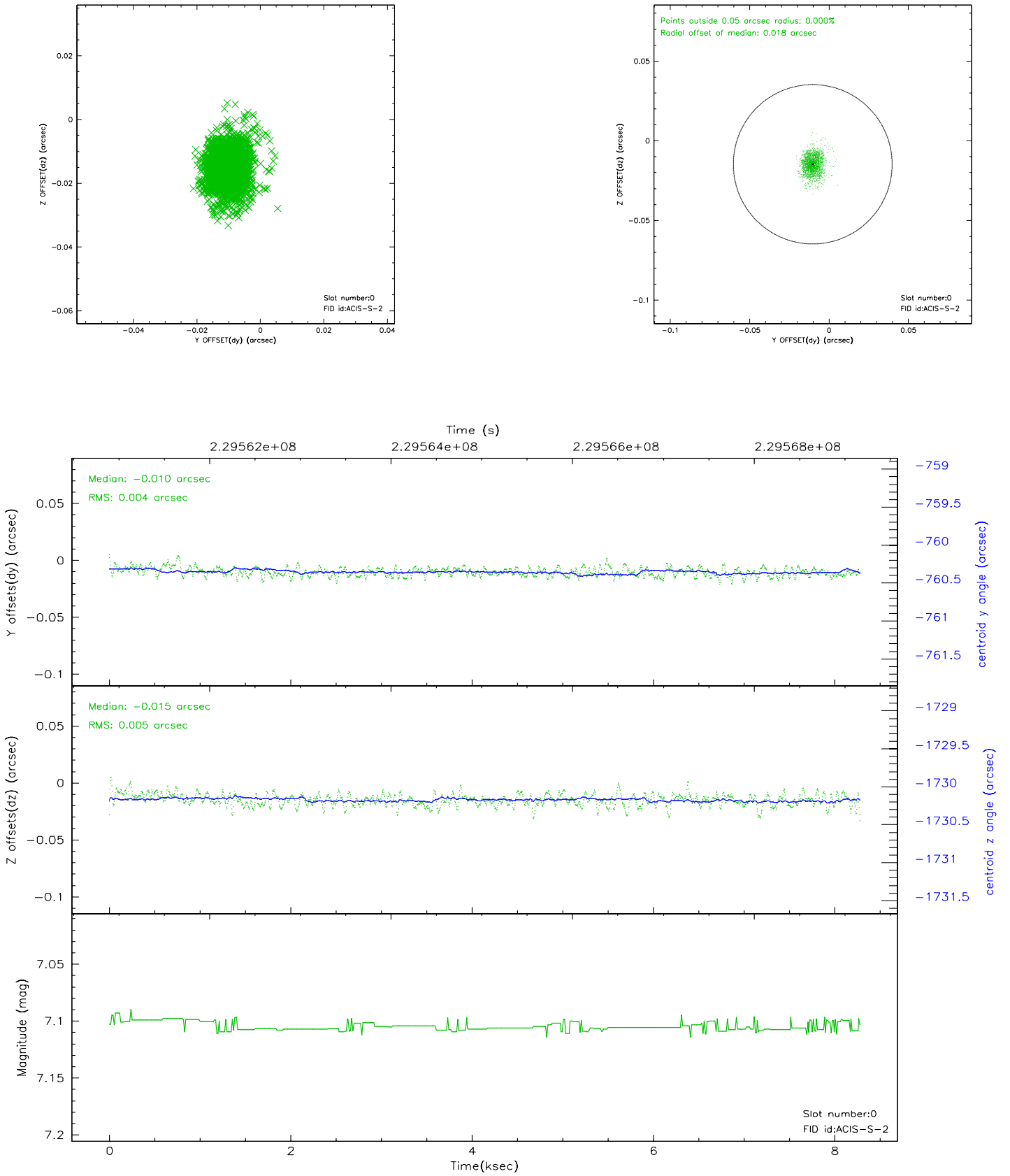


2.4.5 Slot 7

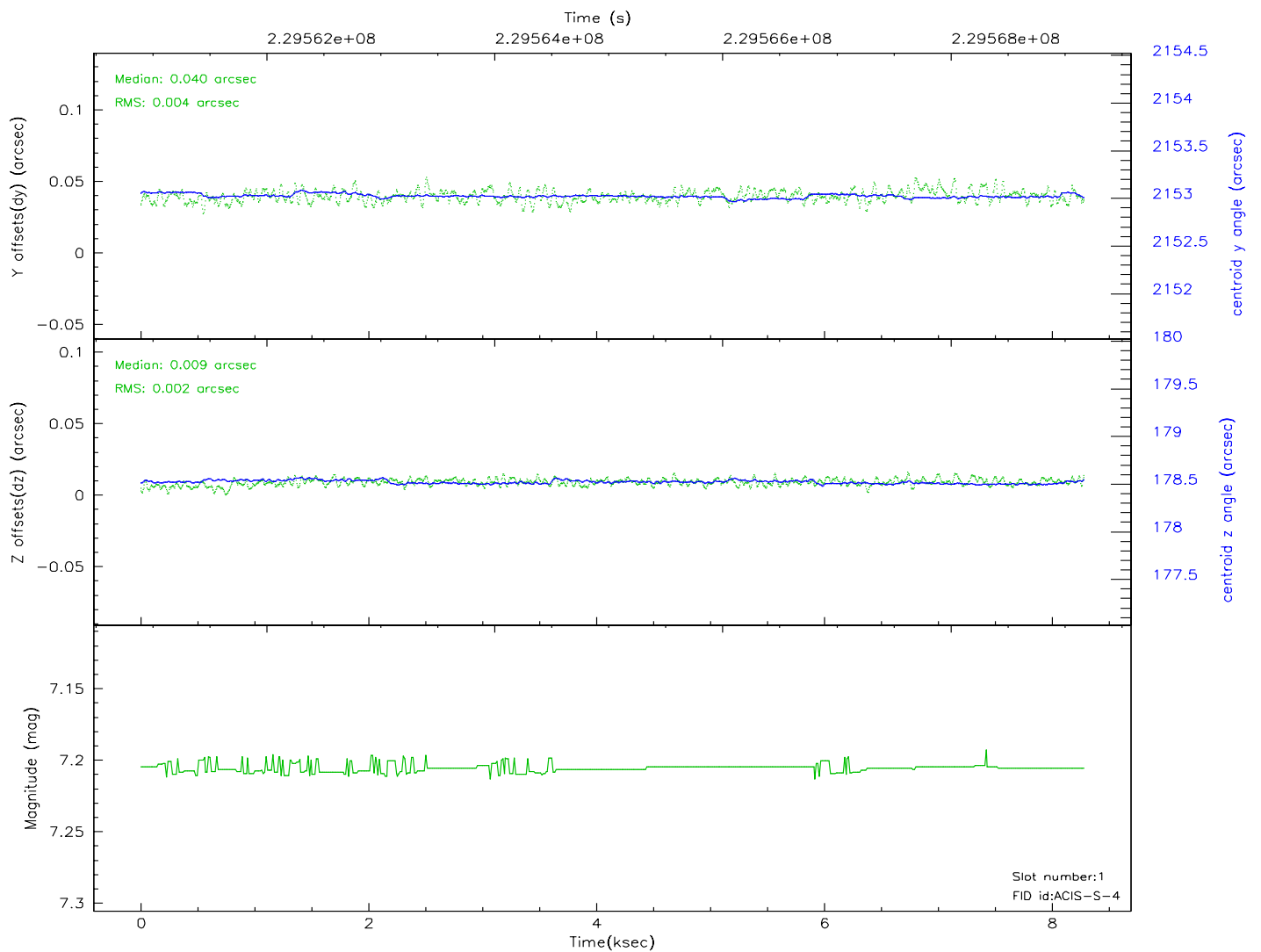
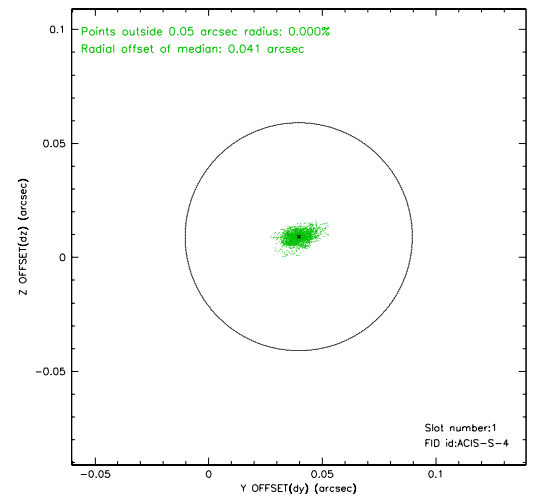
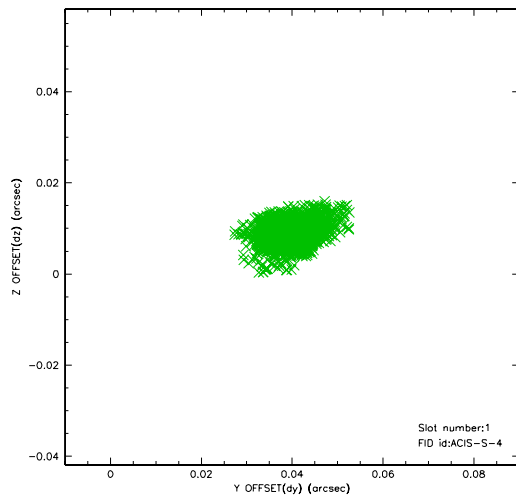


2.5 FID Slots

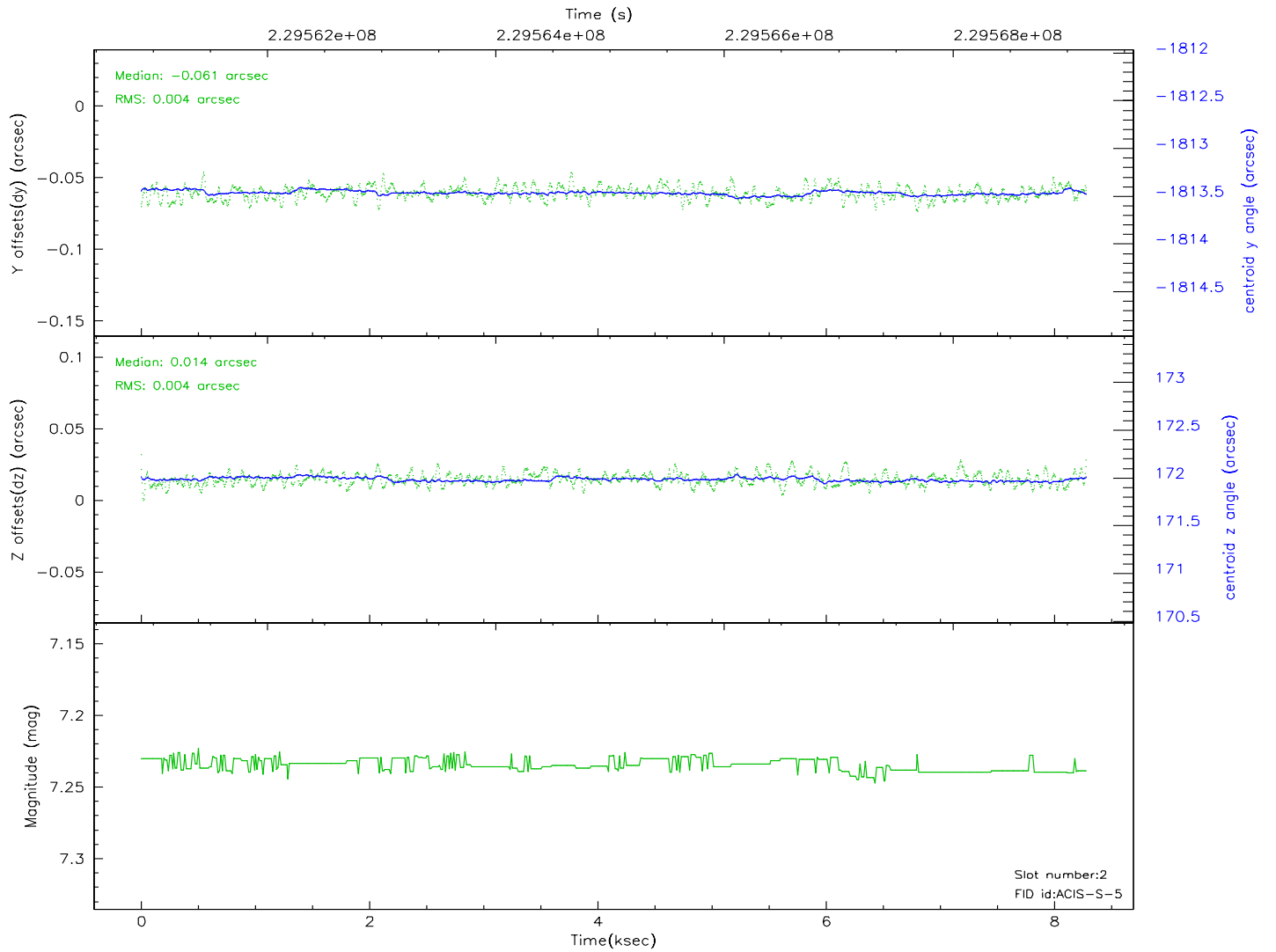
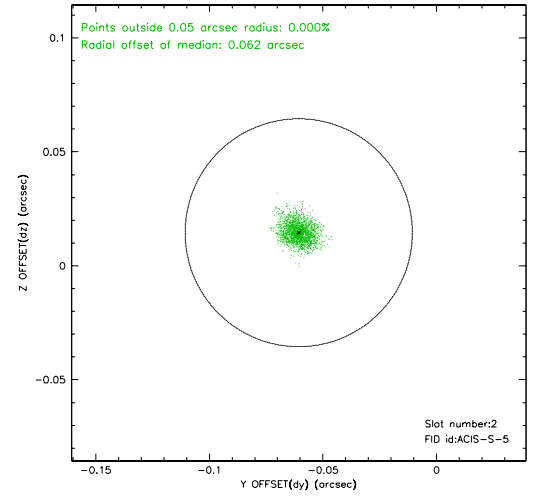
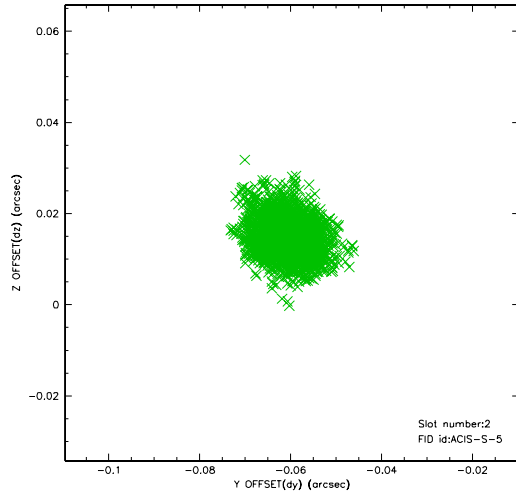
2.5.1 Slot 0



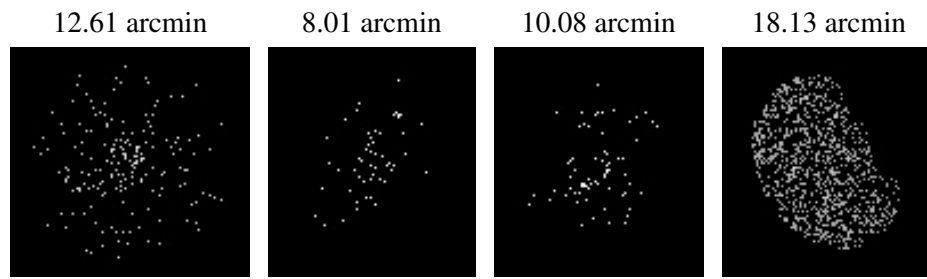
2.5.2 Slot 1



2.5.3 Slot 2



3 Point Sources



A Summary

A.1 Status

V&V Scientist	Jen Lauer
V&V Date (YYYY-MM-DD)	2006.02.28
V&V Edition	1
V&V Disposition and Status	OK
V&V Charge Time	8.278399

A.2 Comments