

V&V Reference Report

L2 ASCDS Version : 7.6.7.1

Observation 5691 - L2 Version 002
Chandra X-Ray Center

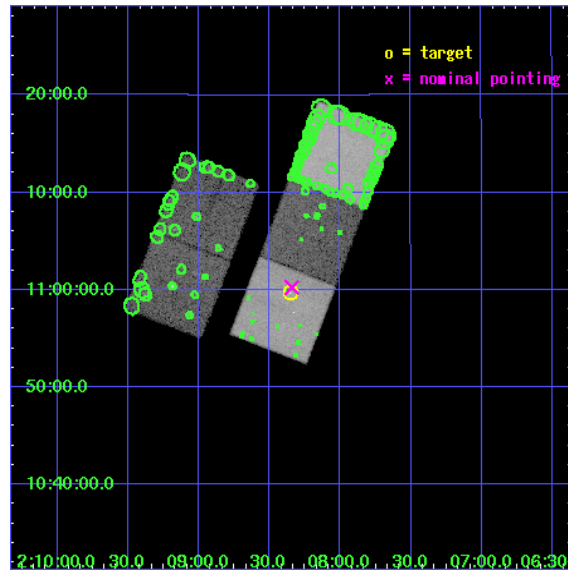
L2 Processing Date : Mar 11 2006

Contents

1	Front	2
2	OBI	3
2.1	OBI	3
2.1.1	Images	3
2.1.2	Bias	3
2.1.3	Parameters	4
2.1.4	Events	4
2.2	Compared Parameters	5
2.3	Aspect	6
2.4	Star Slots	9
2.4.1	Slot 3	9
2.4.2	Slot 4	10
2.4.3	Slot 5	11
2.4.4	Slot 6	12
2.4.5	Slot 7	13
2.5	FID Slots	14
2.5.1	Slot 0	14
2.5.2	Slot 1	15
2.5.3	Slot 2	16
3	Point Sources	17
A	Summary	18
A.1	Status	18
A.2	Comments	18

1 Front

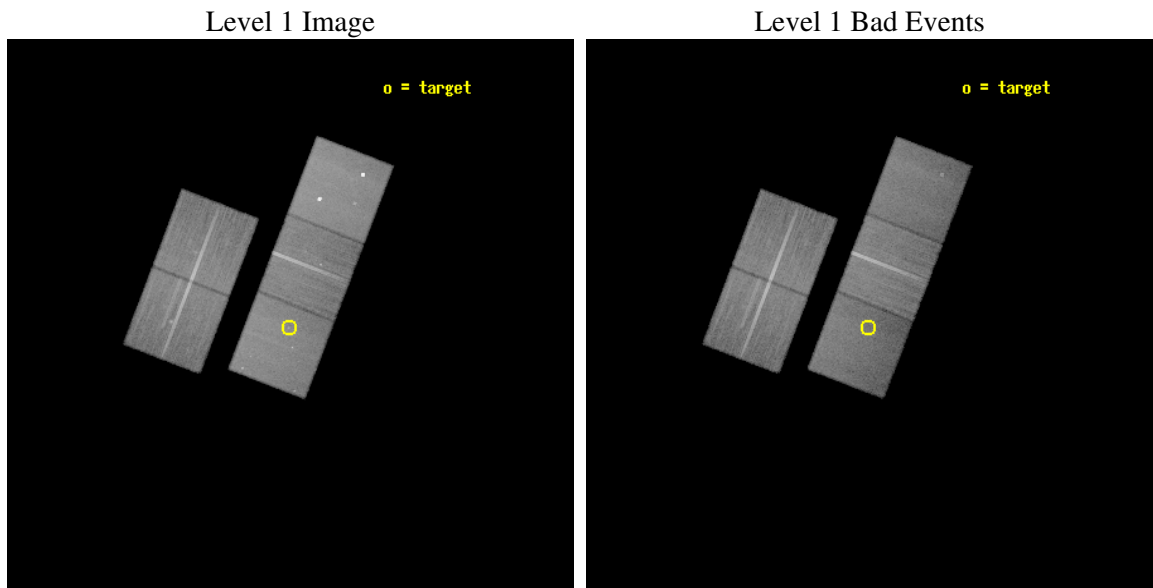
seq_num	701114
obs_id	5691
title	The X-ray Jet of the X-ray faint supermassive nuclear black hole in NGC 821
observer	Dr Giuseppina Fabbiano
object	NGC821
dtcycle	0
cycle	P
ra_targ	32.0875
dec_targ	10.99475
ra_nom	32.085628076759
dec_nom	11.004227239418
roll_nom	111.05698466916
revision	2
ontime	40123.299922854
livetime	39599.059471018
ontime2	40117.017962426
ontime3	40120.158952594
ontime5	40123.299922854
ontime6	40123.299922854
ontime7	40123.299922854
l2events	342471



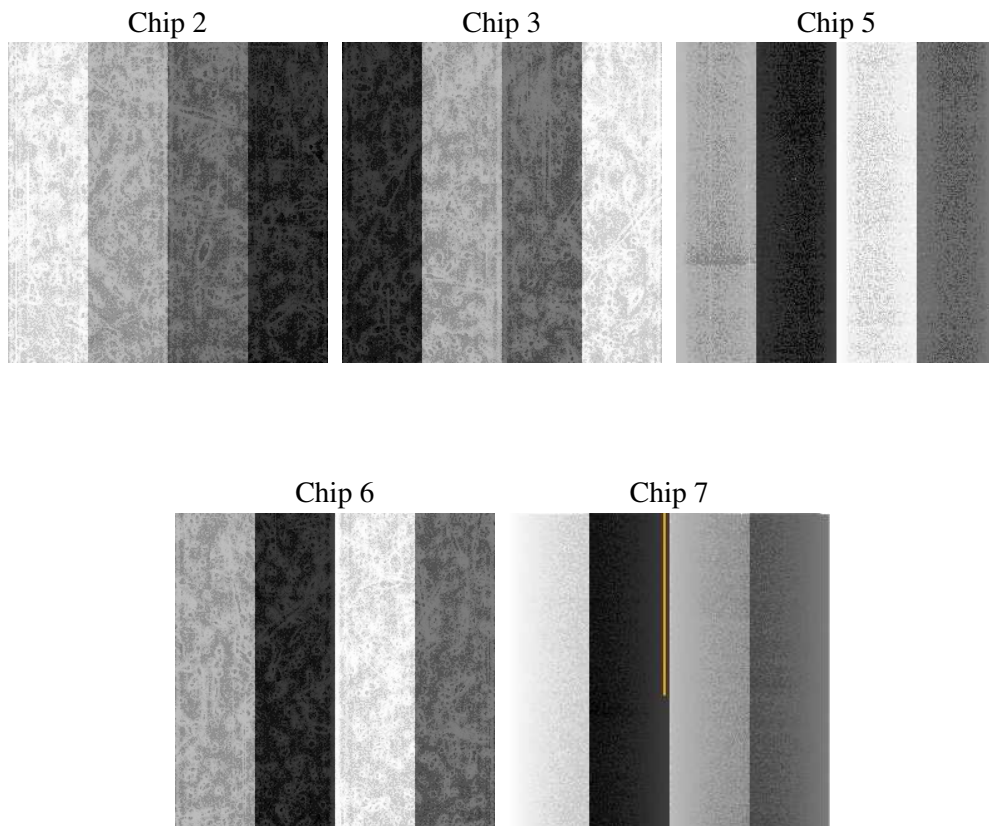
2 OBI

2.1 OBI

2.1.1 Images



2.1.2 Bias



2.1.3 Parameters

obi_num	0
ascdsver	7.6.7.1
caldbver	3.2.1
date	2006-03-11T17:48:52
revision	2

sched_exp_time	40000.000000
ontime	41404.696971655
ontime2	41395.274011016
ontime3	41401.555971444
ontime5	41404.696971655
ontime6	41404.696941704
ontime7	41404.696971655
l1events	1505618

2.1.4 Events

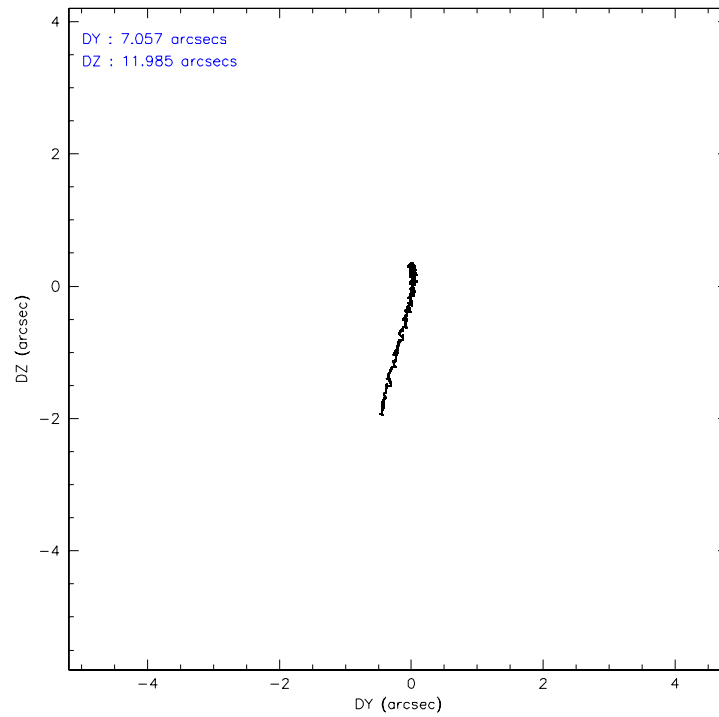
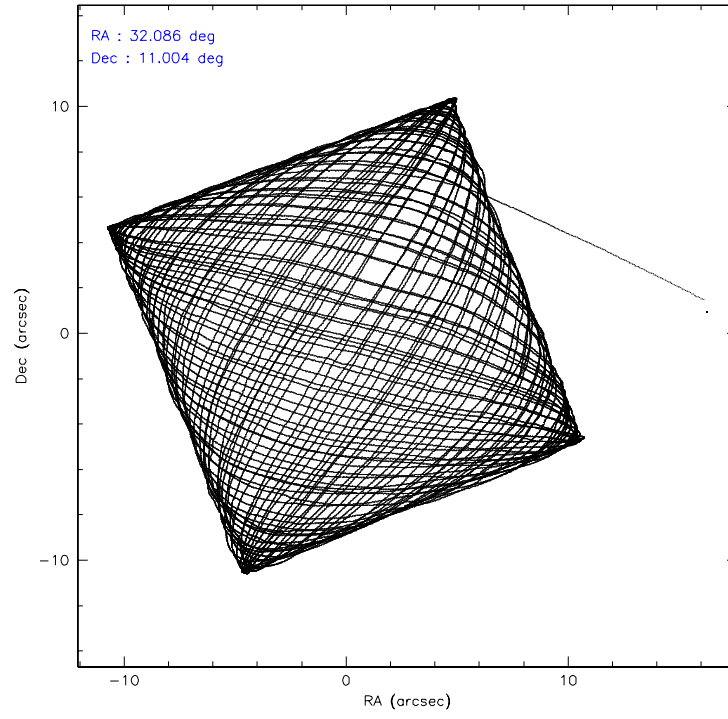
	ccd 2	ccd 3	ccd 5	ccd 6	ccd 7
level 1 events	280364	265980	380505	277931	300838
rejected events	254734	241233	199444	250507	179206
rejected %	90%	90%	52%	90%	59%

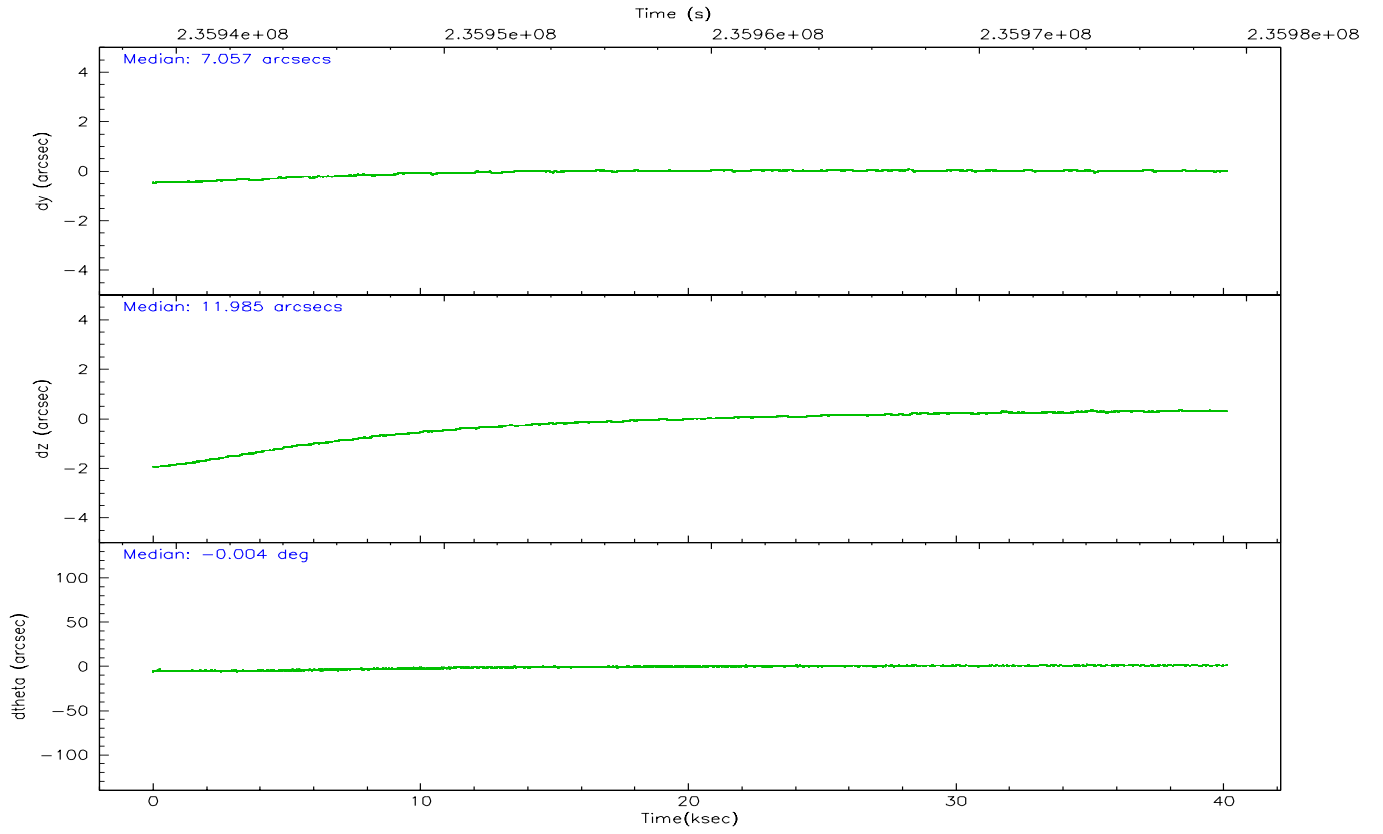
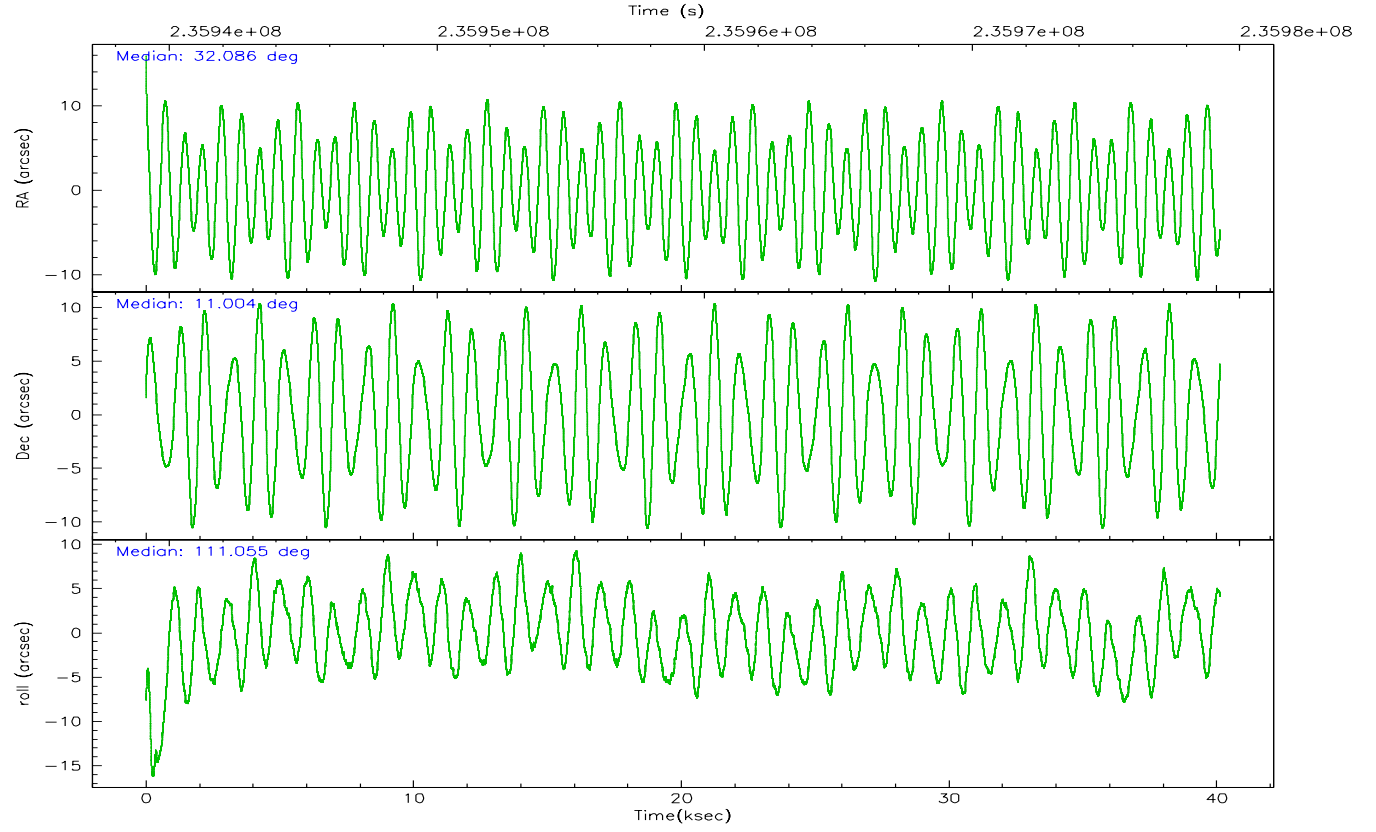
	ccd 2	ccd 3	ccd 5	ccd 6	ccd 7
grade 0 events	9601	9202	18840	9974	7322
	3%	3%	4%	3%	2%
grade 1 events	112	131	588	126	148
	0%	0%	0%	0%	0%
grade 2 events	6240	5469	60224	6130	31382
	2%	2%	15%	2%	10%
grade 3 events	2895	2993	4421	3120	7111
	1%	1%	1%	1%	2%
grade 4 events	2933	2914	4127	3023	6897
	1%	1%	1%	1%	2%
grade 5 events	8812	10663	19588	10932	22508
	3%	4%	5%	3%	7%
grade 6 events	4808	4980	99219	6085	72642
	1%	1%	26%	2%	24%
grade 7 events	244963	229628	173498	238541	152828
	87%	86%	45%	85%	50%

2.2 Compared Parameters

Parameter	Planned	Actual	Parameter	Planned	Actual
Instrument	ACIS	ACIS	Obspar format version number	6	6
Detector	ACIS-23567	ACIS-23567	Obspar file type	PREDICTED	ACTUAL
Grating	NONE	NONE	Obspar update status	NONE	UPDATED
Data mode	VFAINT	VFAINT	On-chip summing requested	N	N
Observation mode	POINTING	POINTING	Subarray requested	NONE	NONE
Pointing RA	32.107433	32.08562807675853	Alternating exposures requested	N	N
Pointing Dec	10.987414	11.00422723941757	Primary exposure time	0.000000	3.1
Pointing Roll	110.896198	111.0569846691649			
SIM focus pos (mm)	-0.684267	-0.6828225247311905			
SIM defocus (mm)	0	0.001444936568705701			
SIM translation stage pos (mm)	-190.132523	-190.1400660498719			
SIM translation stage offset (mm)	0	0.00754346686406393			
Observation start time	235939263.184000	235937653.93087			
Observation start date	2005-06-23T18:39:59	2005-06-23T18:14:13			
Observation end time	235979263.184000	235980352.87032			
Observation end date	2005-06-24T05:46:39	2005-06-24T06:05:52			
Read mode	TIMED	TIMED			

2.3 Aspect



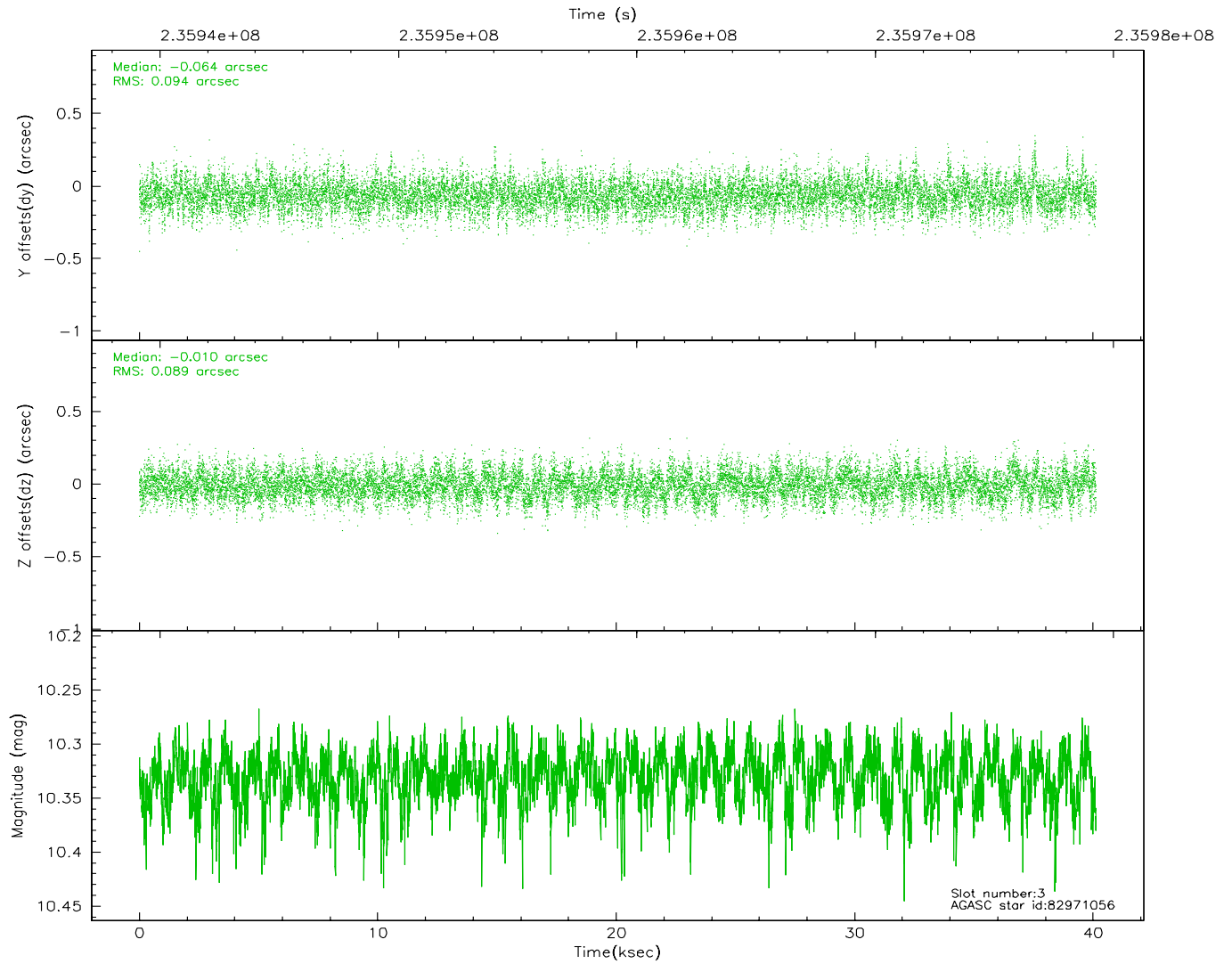
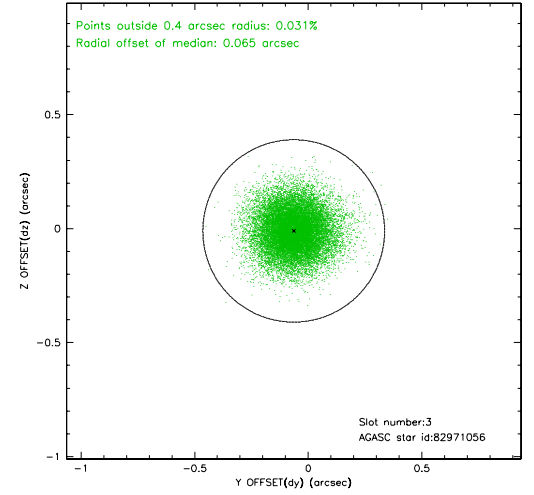
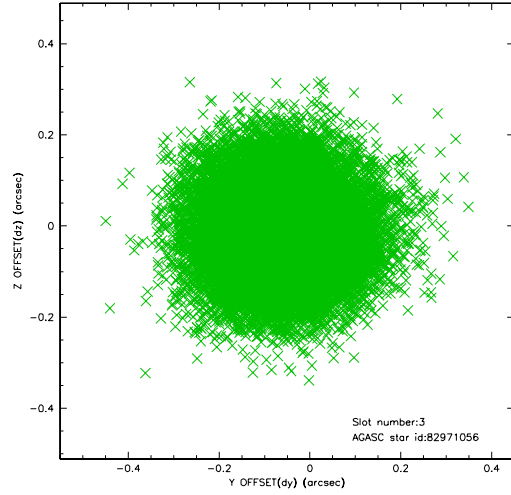


Slot Statistics

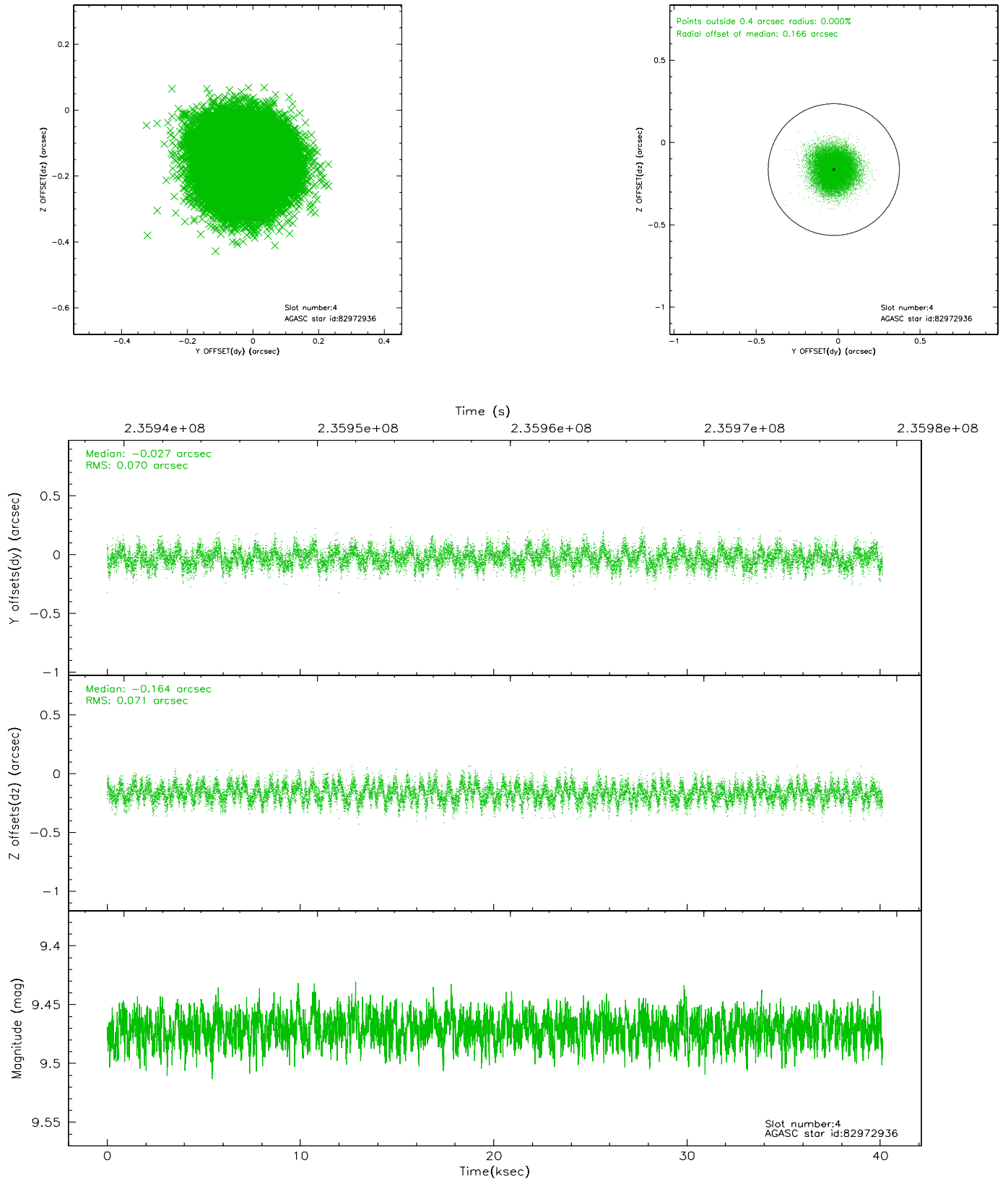
slot	status	id	mag	n_pts	med_dy	med_dz	dr1	dr2	ra	dec	mean_y	mean_z
0	FID	ACIS-S-1	7.18	9788	0.022	-0.059	0.016	0.051	0.000000	0.000000	936.27	-1728.73
1	FID	ACIS-S-4	7.20	9787	0.014	0.035	0.016	0.031	0.000000	0.000000	2153.72	175.49
2	FID	ACIS-S-5	7.23	9788	-0.061	0.037	0.008	0.030	0.000000	0.000000	-1812.63	169.15
3	GUIDE	82971056	10.33	19548	-0.064	-0.010	0.138	0.224	31.381677	11.249277	1797.72	2056.74
4	GUIDE	82972936	9.47	19564	-0.027	-0.164	0.108	0.167	31.880349	11.323150	1415.57	317.71
5	GUIDE	82976088	10.29	19511	0.156	-0.196	0.223	0.351	31.548572	10.635312	-476.98	2298.29
6	GUIDE	82976744	9.50	19564	0.162	0.093	0.106	0.169	32.095784	10.602457	-1279.65	533.06
7	GUIDE	82974960	9.84	19557	-0.249	0.279	0.155	0.249	31.911636	11.621581	2379.11	-168.96

2.4 Star Slots

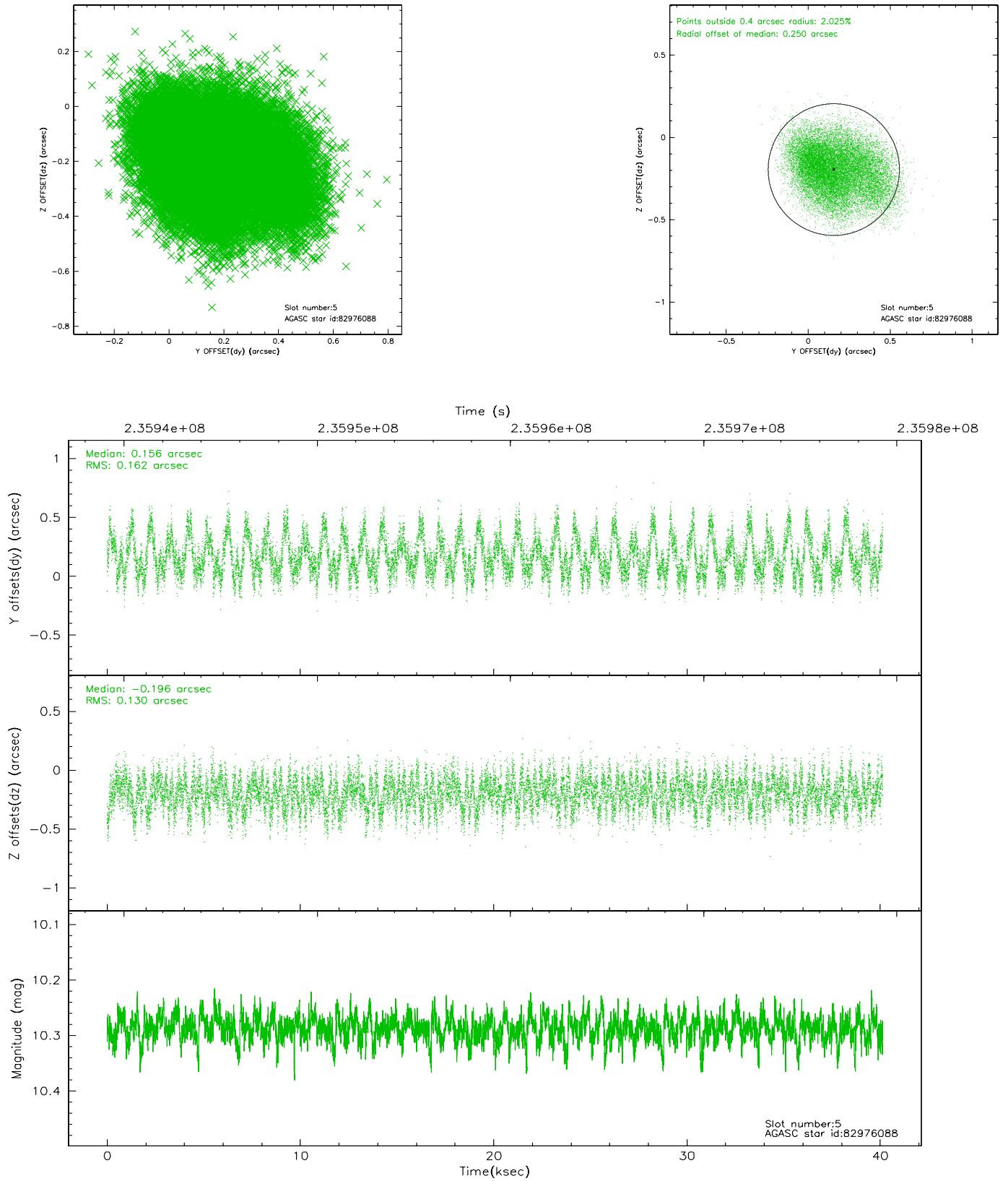
2.4.1 Slot 3



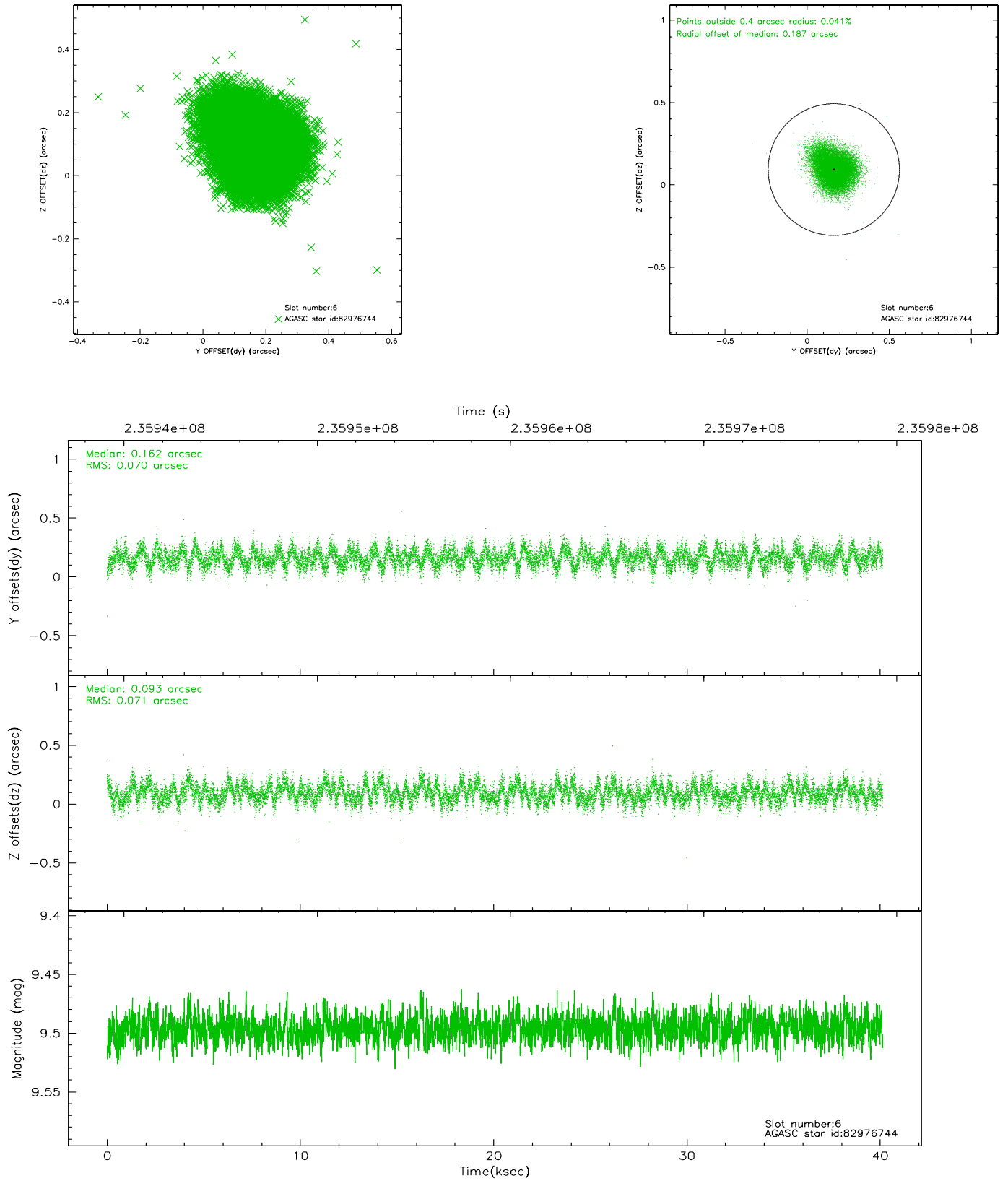
2.4.2 Slot 4



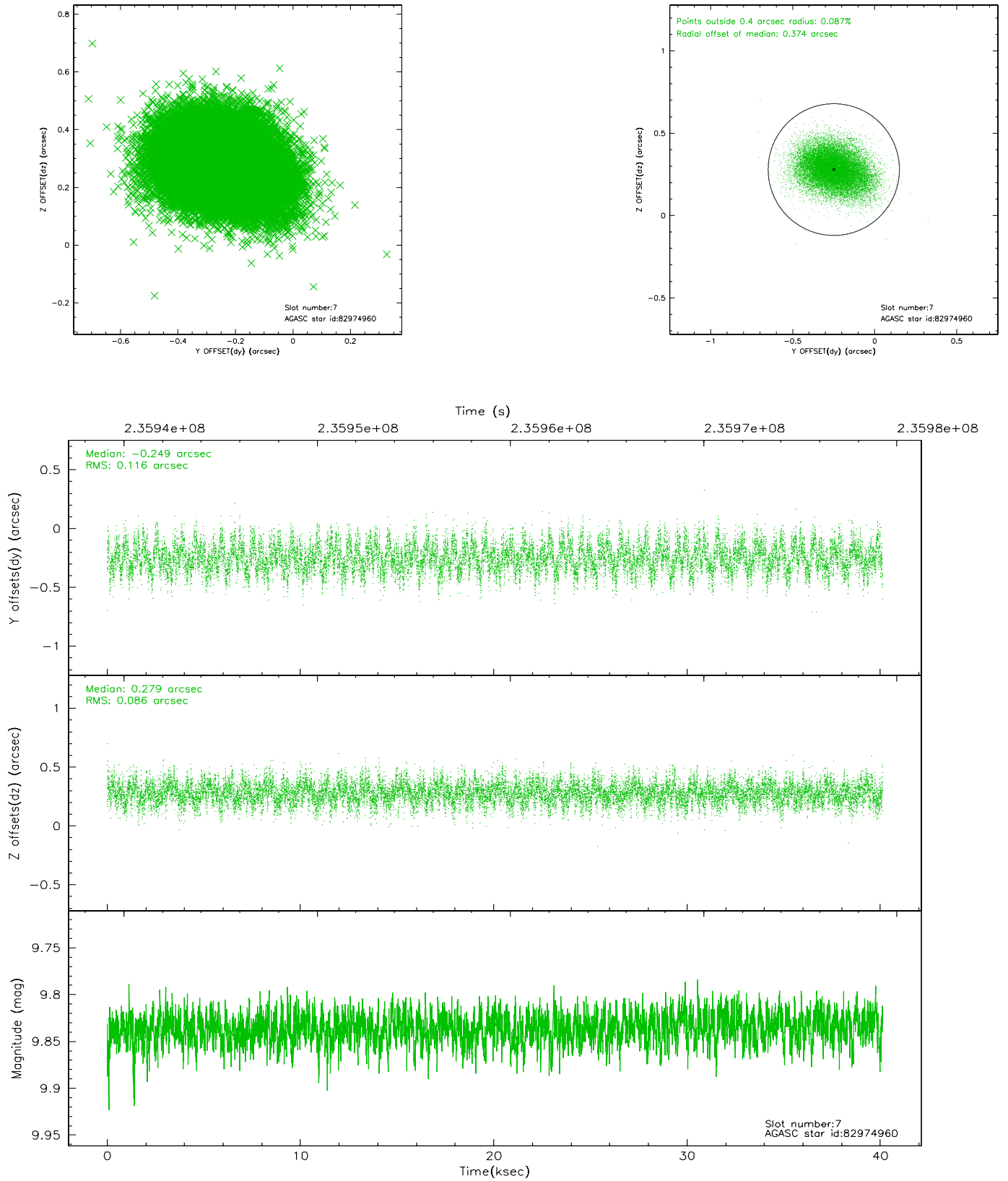
2.4.3 Slot 5



2.4.4 Slot 6

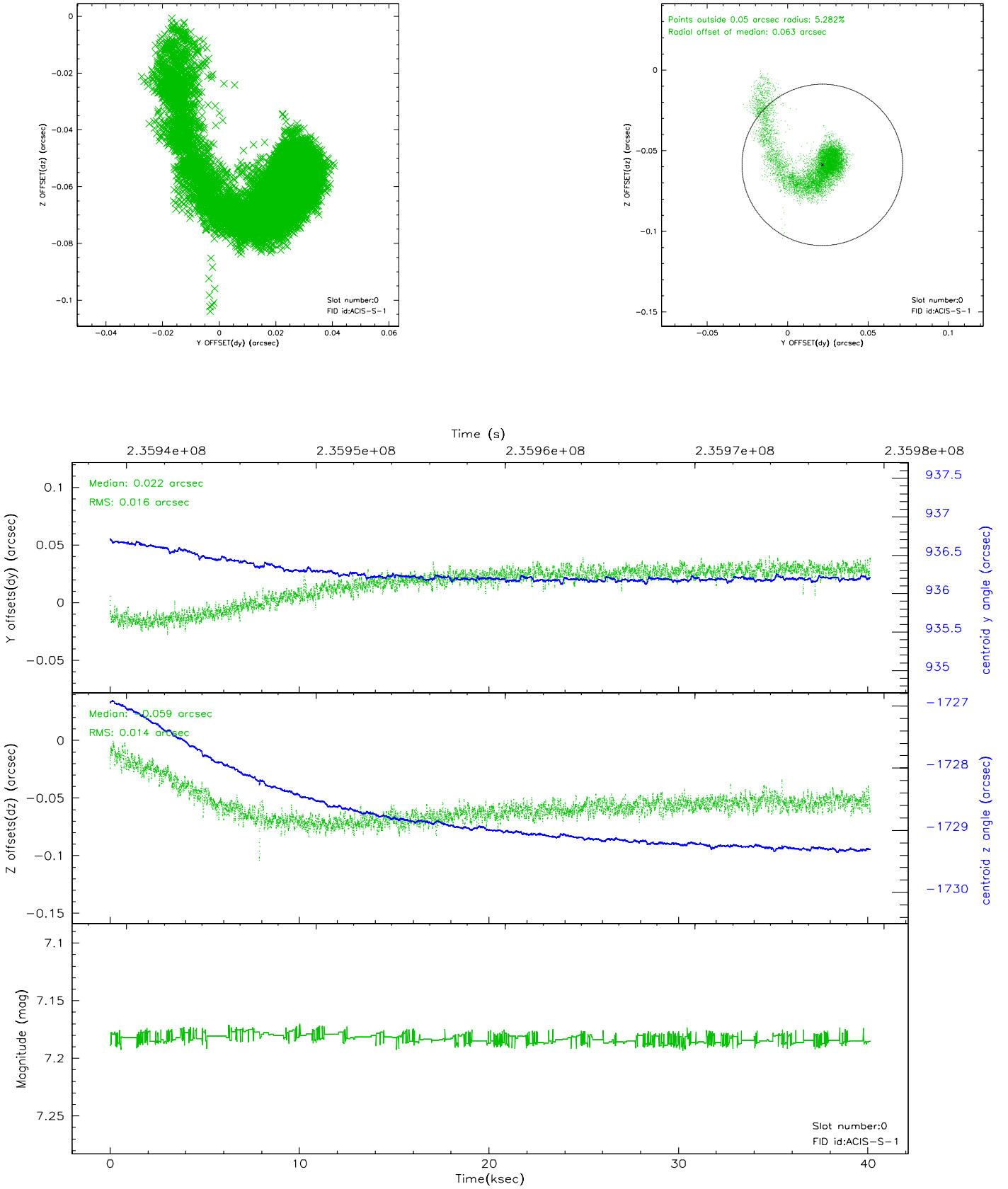


2.4.5 Slot 7

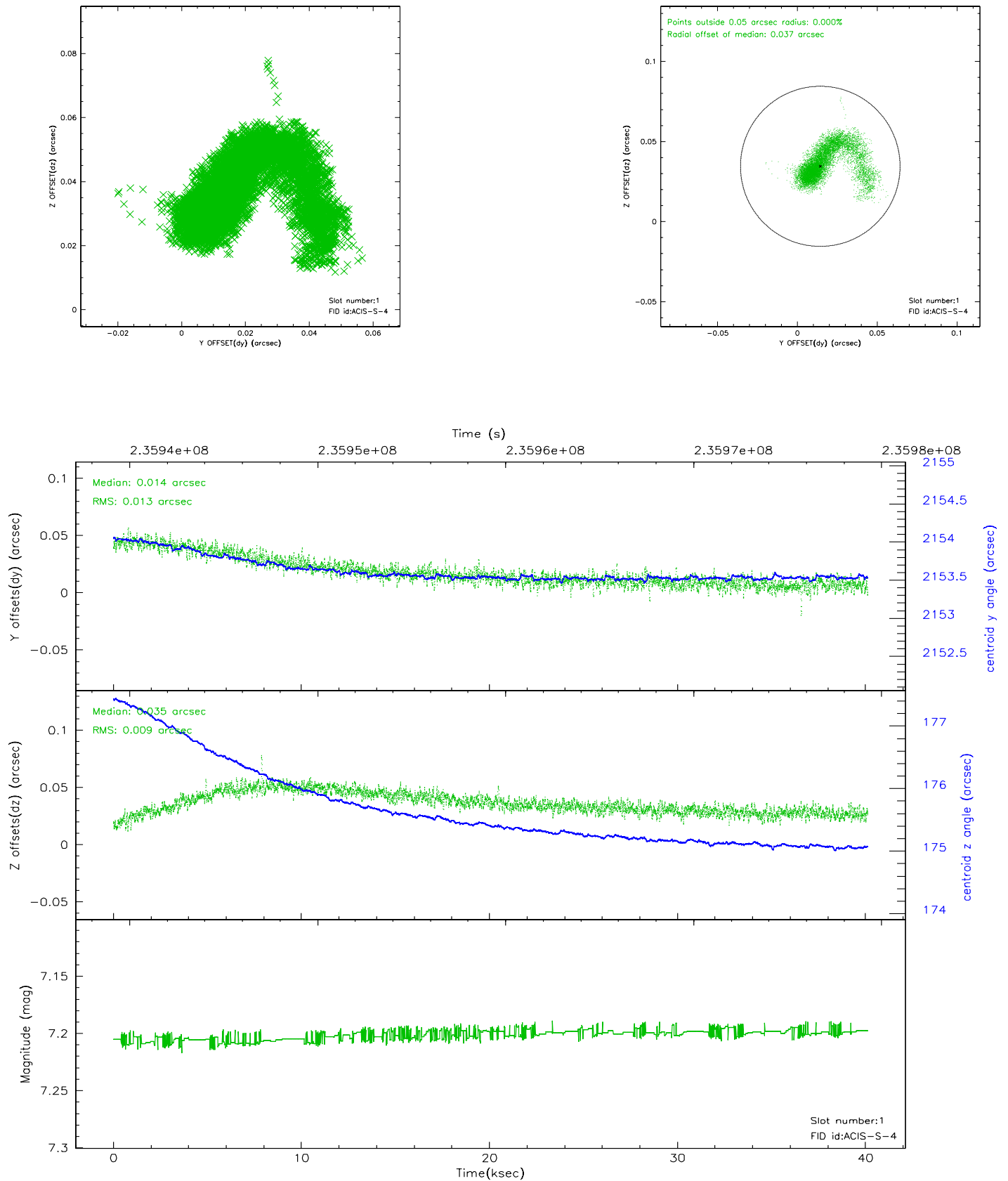


2.5 FID Slots

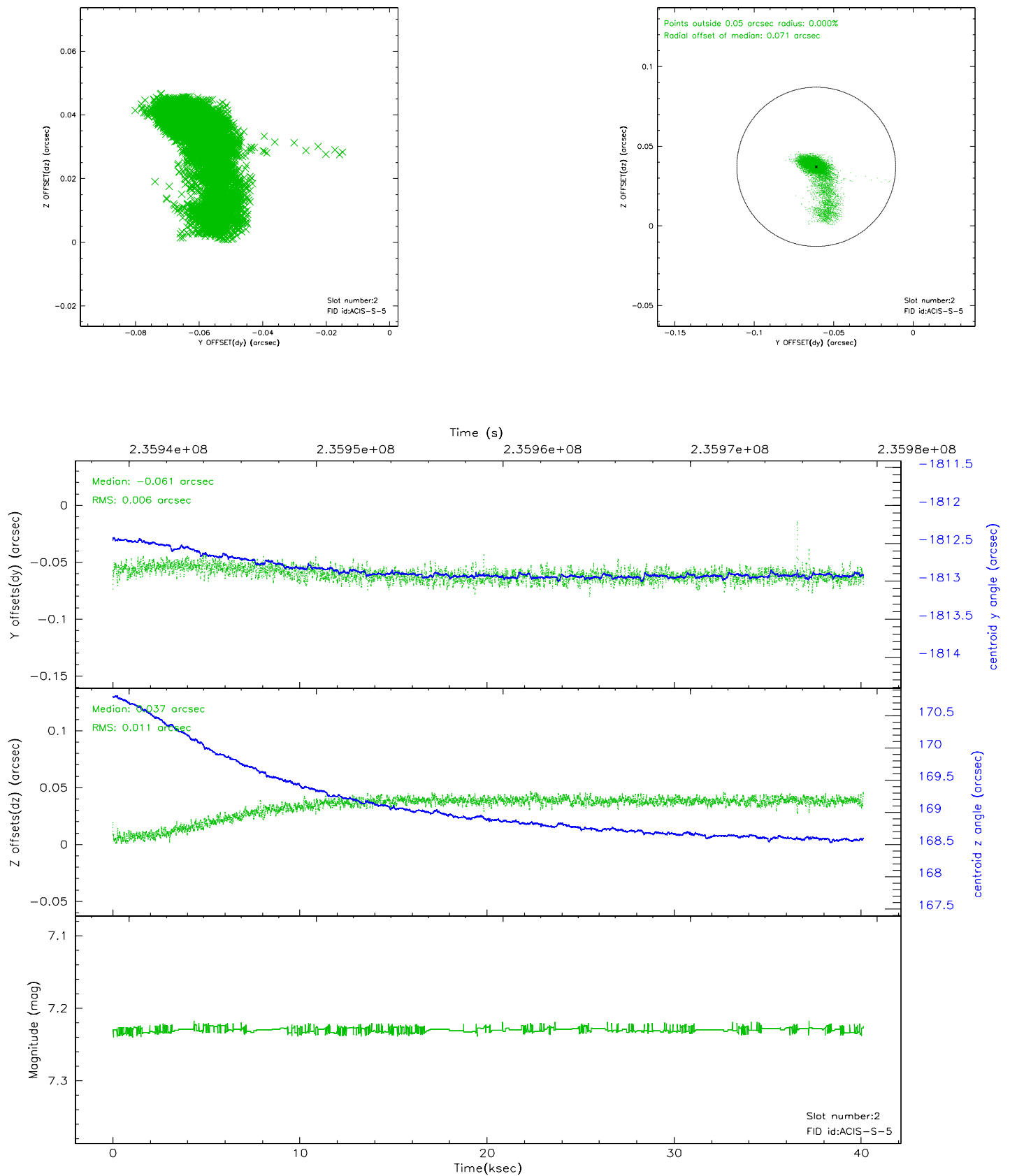
2.5.1 Slot 0



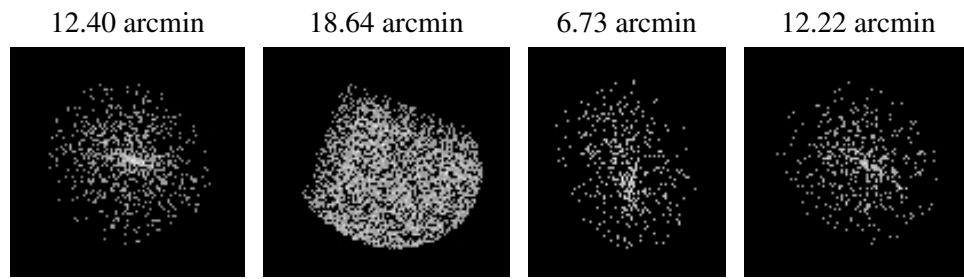
2.5.2 Slot 1



2.5.3 Slot 2



3 Point Sources



A Summary

A.1 Status

V&V Scientist	Jen Lauer
V&V Date (YYYY-MM-DD)	2006.03.13
V&V Edition	1
V&V Disposition and Status	OK
V&V Charge Time	40.12329

A.2 Comments

First 8 ksec have large fid light displacement before settling to a good solution. This is not believed to affect the aspect solution.