

V&V Reference Report

L2 ASCDS Version : 7.6.7

Observation 5688 - L2 Version 003
Chandra X-Ray Center

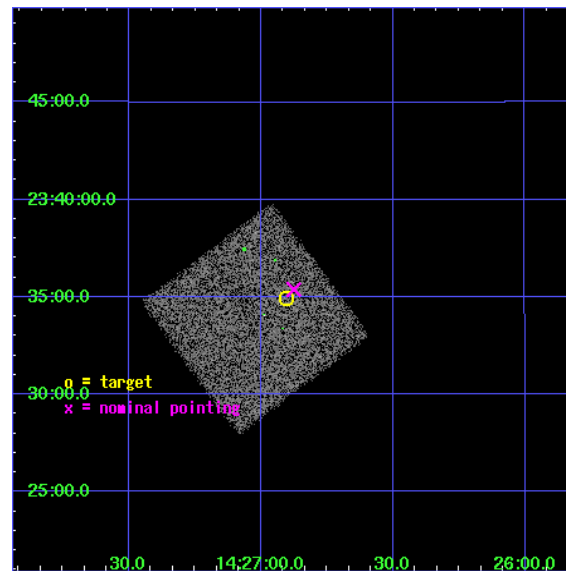
L2 Processing Date: Feb 28 2006

Contents

1	Front	2
2	OBI	3
2.1	OBI	3
2.1.1	Images	3
2.1.2	Bias	3
2.1.3	Parameters	4
2.1.4	Events	4
2.2	Compared Parameters	5
2.3	Aspect	6
2.4	Star Slots	9
2.4.1	Slot 3	9
2.4.2	Slot 4	10
2.4.3	Slot 5	11
2.5	FID Slots	12
2.5.1	Slot 0	12
2.5.2	Slot 1	13
2.5.3	Slot 2	14
3	Point Sources	15
A	Summary	16
A.1	Status	16
A.2	Comments	16

1 Front

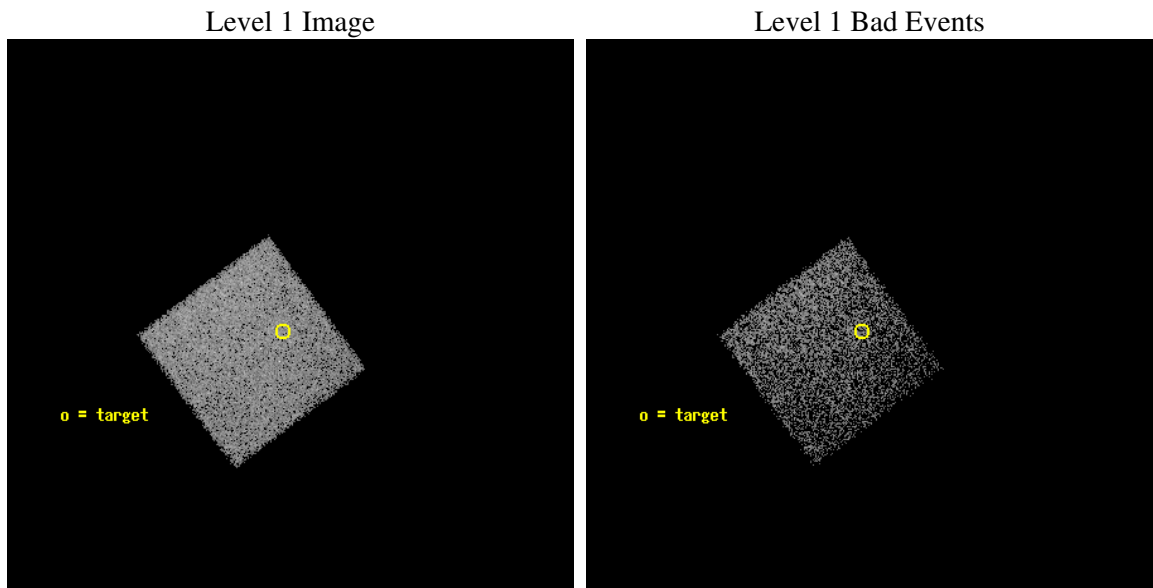
seq_num	701111
obs_id	5688
title	Bringing in the Last SHEEP
observer	Dr Kirpal Nandra
object	AX J1426.9+2334
dtcycle	0
cycle	P
ra_targ	216.72625
dec_targ	23.582778
ra_nom	216.71899403611
dec_nom	23.589874484529
roll_nom	143.15952679384
revision	3
ontime	5174.3999807239
livetime	5108.8786125183
ontime7	5174.3999807239
l2events	19733



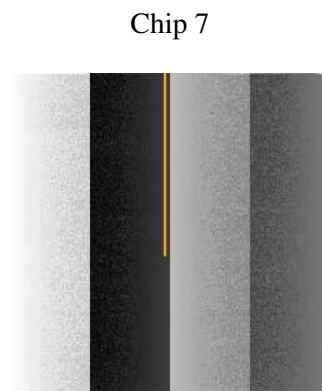
2 OBI

2.1 OBI

2.1.1 Images



2.1.2 Bias



2.1.3 Parameters

obi_num	1
ascdsver	7.6.7
caldbver	3.2.1
date	2006-02-28T19:27:46
revision	3

sched_exp_time	5000.000000
ontime	5208.3074368834
ontime7	5208.3074368834
l1events	52404

2.1.4 Events

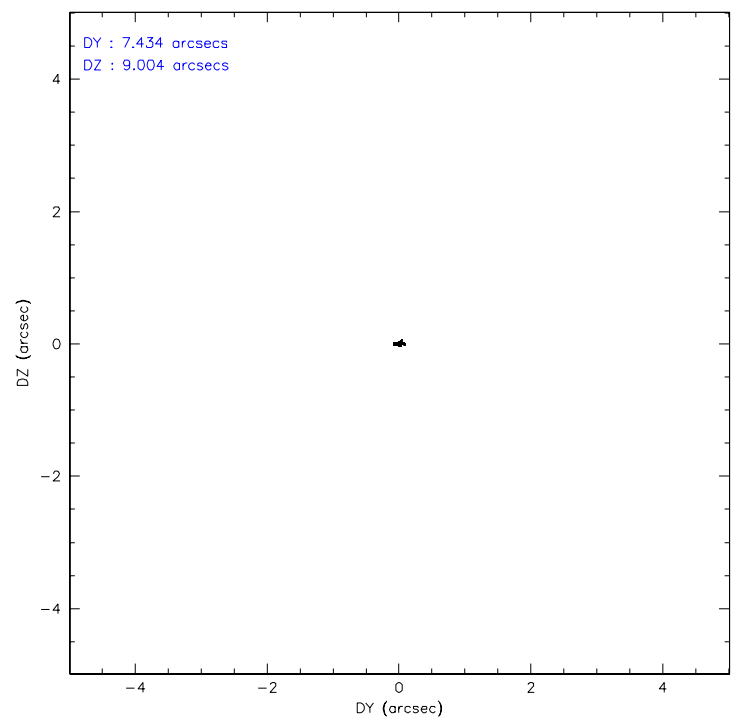
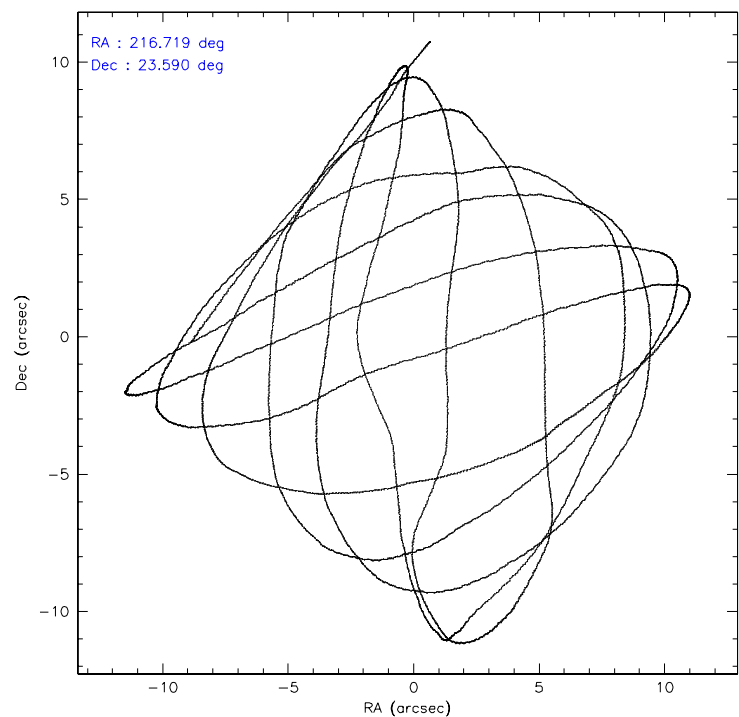
	ccd 7
level 1 events	52404
rejected events	32158
rejected %	61%

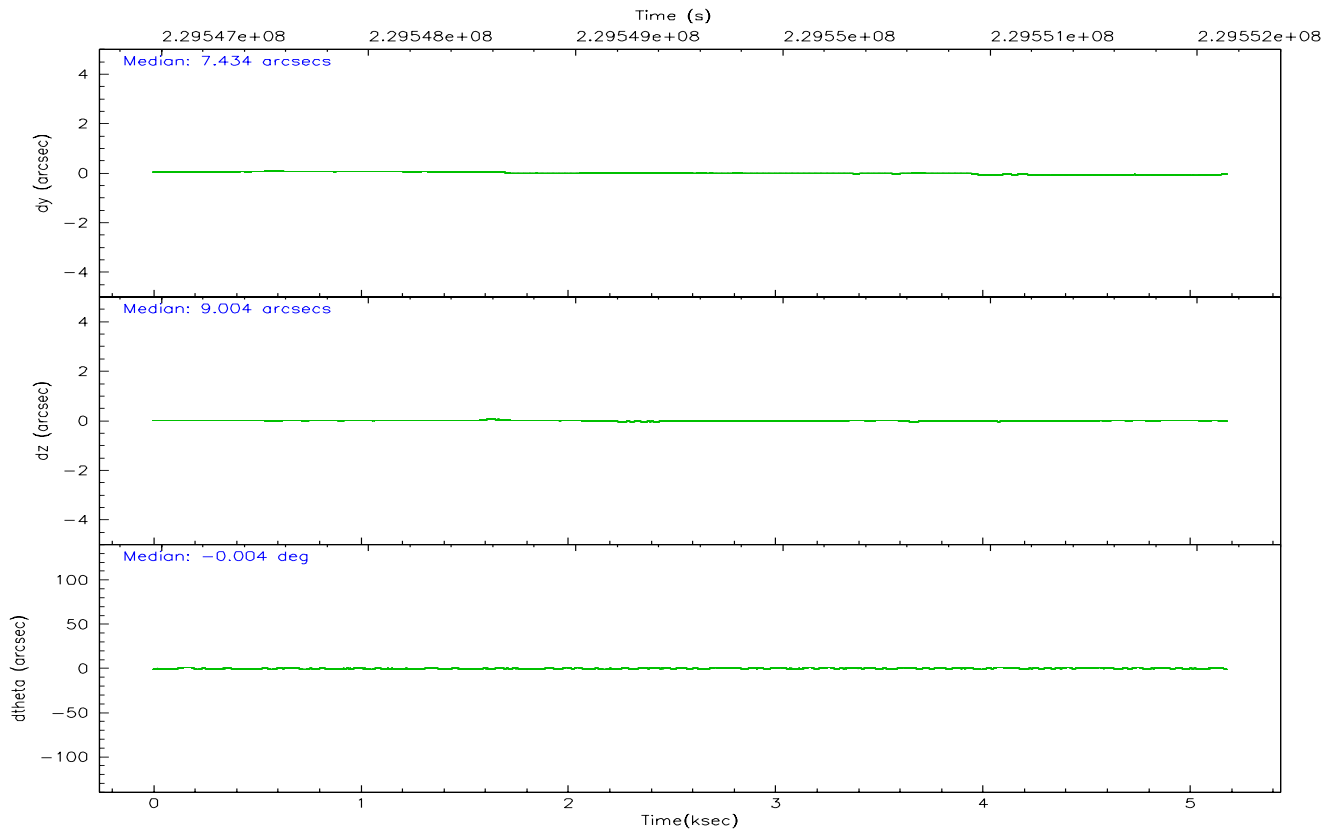
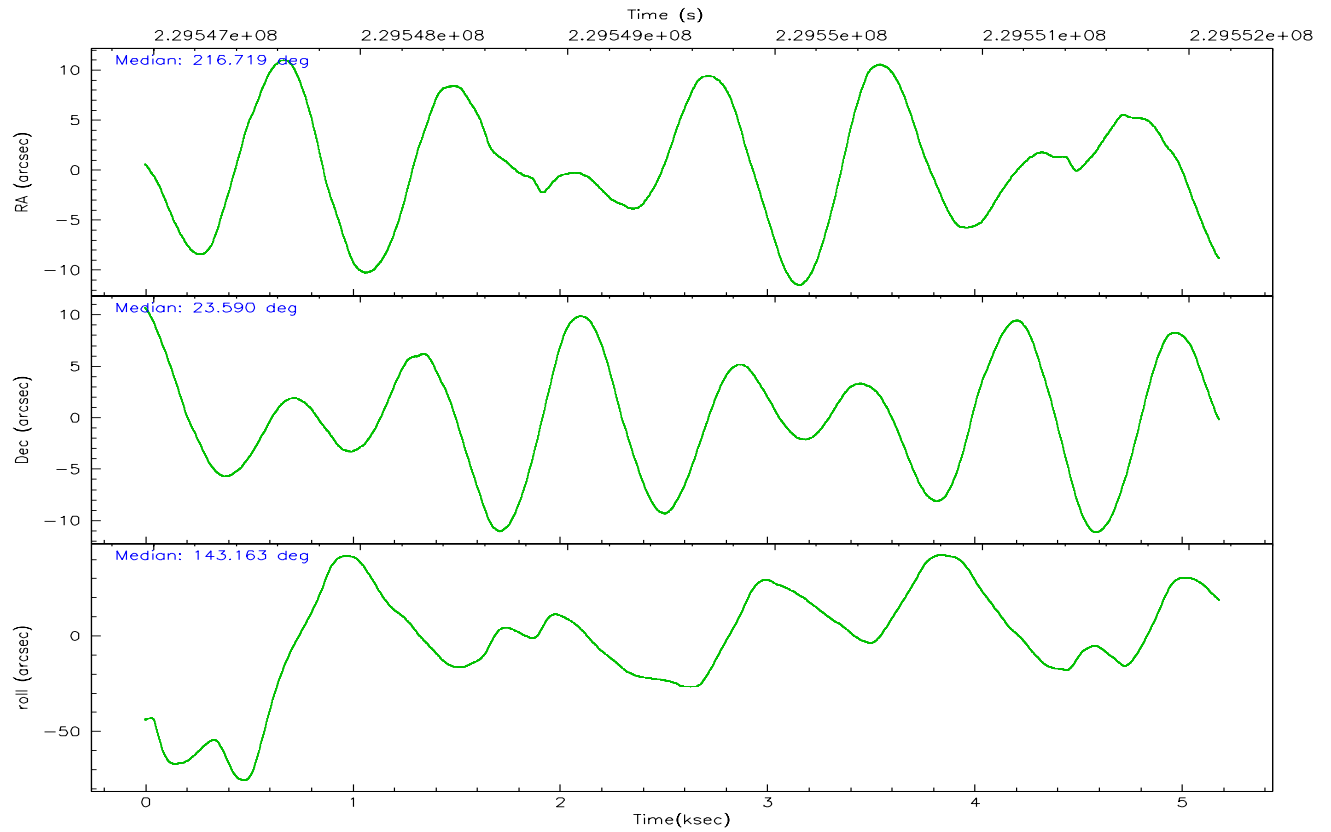
	ccd 7
grade 0 events	1186
	2%
grade 1 events	25
	0%
grade 2 events	5098
	9%
grade 3 events	1056
	2%
grade 4 events	1020
	1%
grade 5 events	3429
	6%
grade 6 events	12020
	22%
grade 7 events	28570
	54%

2.2 Compared Parameters

Parameter	Planned	Actual	Parameter	Planned	Actual
Instrument	ACIS	ACIS	Obspar format version number	6	6
Detector	ACIS-7	ACIS-7	Obspar file type	PREDICTED	ACTUAL
Grating	NONE	NONE	Obspar update status	NONE	UPDATED
Data mode	FAINT	FAINT	On-chip summing requested	N	N
Observation mode	POINTING	POINTING	Subarray requested	NONE	NONE
Pointing RA	216.748593	216.7189940361114	Alternating exposures requested	N	N
Pointing Dec	23.586961	23.58987448452888	Primary exposure time	0.000000	3.2
Pointing Roll	142.991064	143.159526793844			
SIM focus pos (mm)	-0.684267	-0.6828225247311905			
SIM defocus (mm)	0	0.001444936568705701			
SIM translation stage pos (mm)	-190.132523	-190.145094680475			
SIM translation stage offset (mm)	0	0.01257209746719923			
Observation start time	229547139.184000	229546376.3272			
Observation start date	2005-04-10T19:04:35	2005-04-10T18:52:56			
Observation end time	229552139.184000	229552677.00248			
Observation end date	2005-04-10T20:27:55	2005-04-10T20:37:57			
Read mode	TIMED	TIMED			

2.3 Aspect



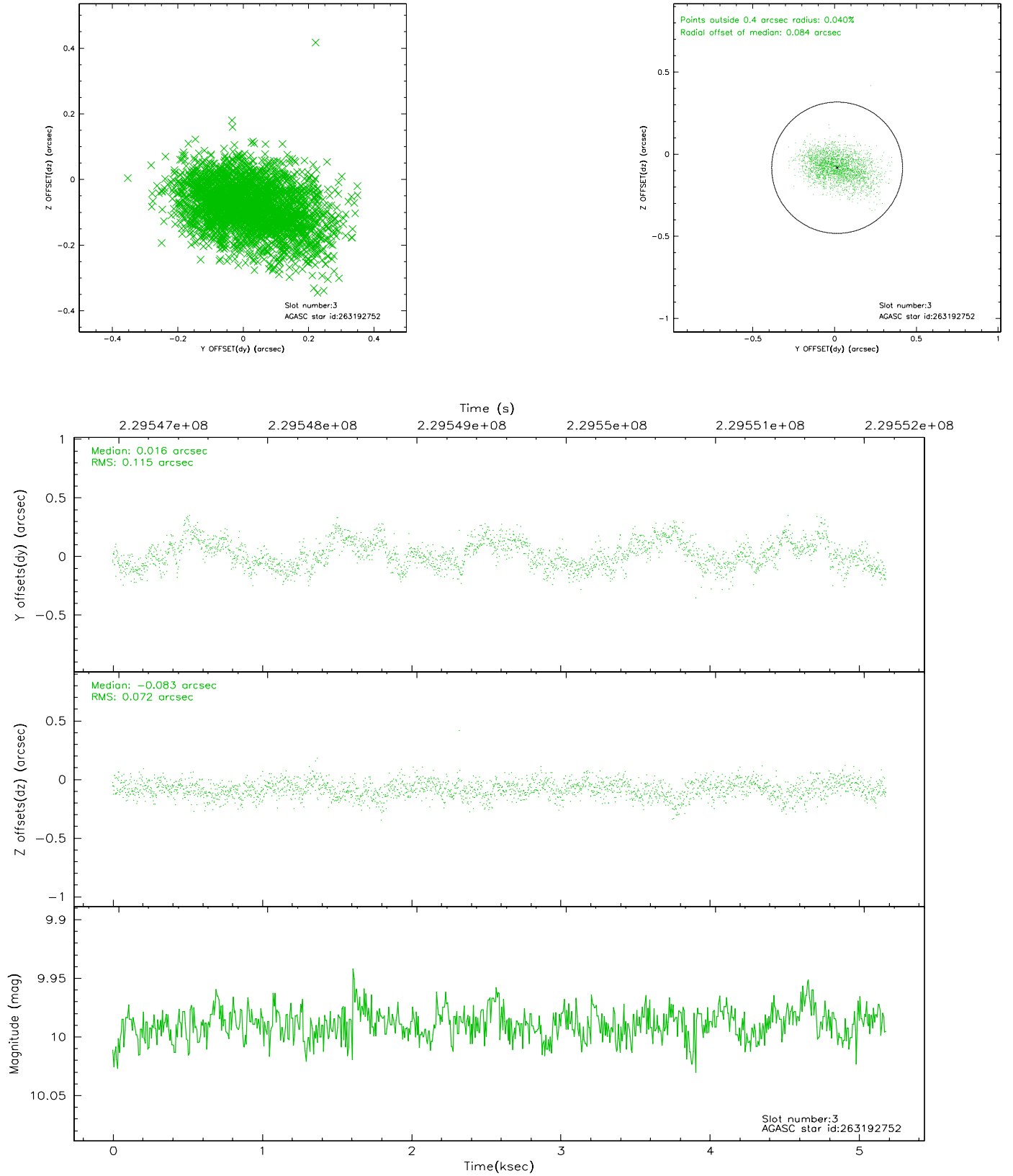


Slot Statistics

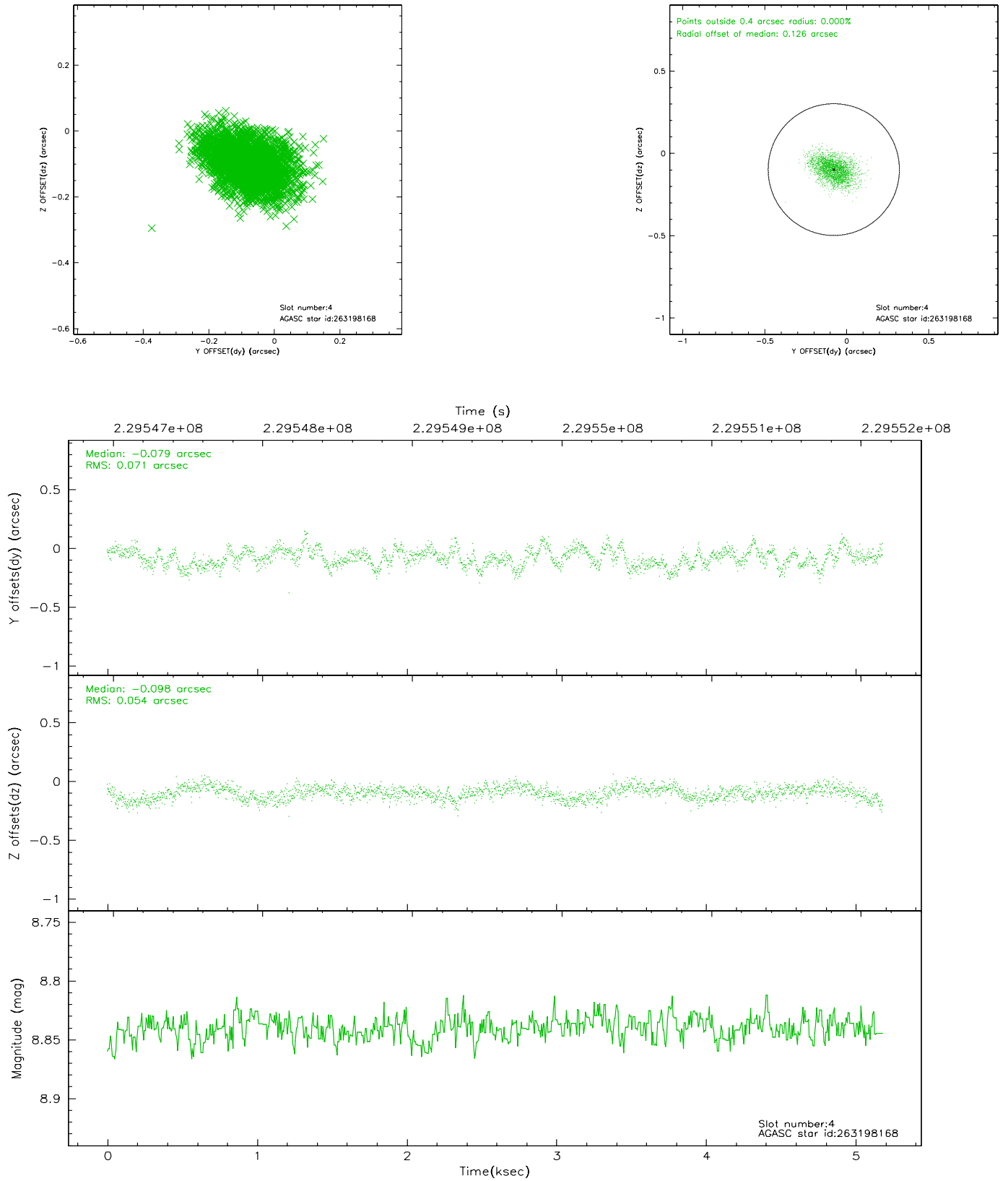
slot	status	id	mag	n_pts	med_dy	med_dz	dr1	dr2	ra	dec	mean_y	mean_z
0	FID	ACIS-S-2	7.10	1264	-0.013	-0.015	0.007	0.011	0.000000	0.000000	-760.20	-1730.14
1	FID	ACIS-S-4	7.21	1264	0.034	0.011	0.005	0.009	0.000000	0.000000	2152.58	177.18
2	FID	ACIS-S-5	7.23	1264	-0.052	0.013	0.006	0.010	0.000000	0.000000	-1811.59	172.16
3	GUIDE	263192752	9.99	2523	0.016	-0.083	0.146	0.238	216.329100	23.678864	1304.22	566.67
4	GUIDE	263198168	8.84	2527	-0.079	-0.098	0.094	0.155	216.844674	22.716629	-2140.16	2310.31
5	GUIDE	263199776	10.44	2527	0.055	0.182	0.133	0.214	216.935417	23.215957	-1298.58	695.44
6	OMITTED		0.00	0	0.000	0.000	0.000	0.000	0.000000	0.000000	0.00	0.00
7	OMITTED		0.00	0	0.000	0.000	0.000	0.000	0.000000	0.000000	0.00	0.00

2.4 Star Slots

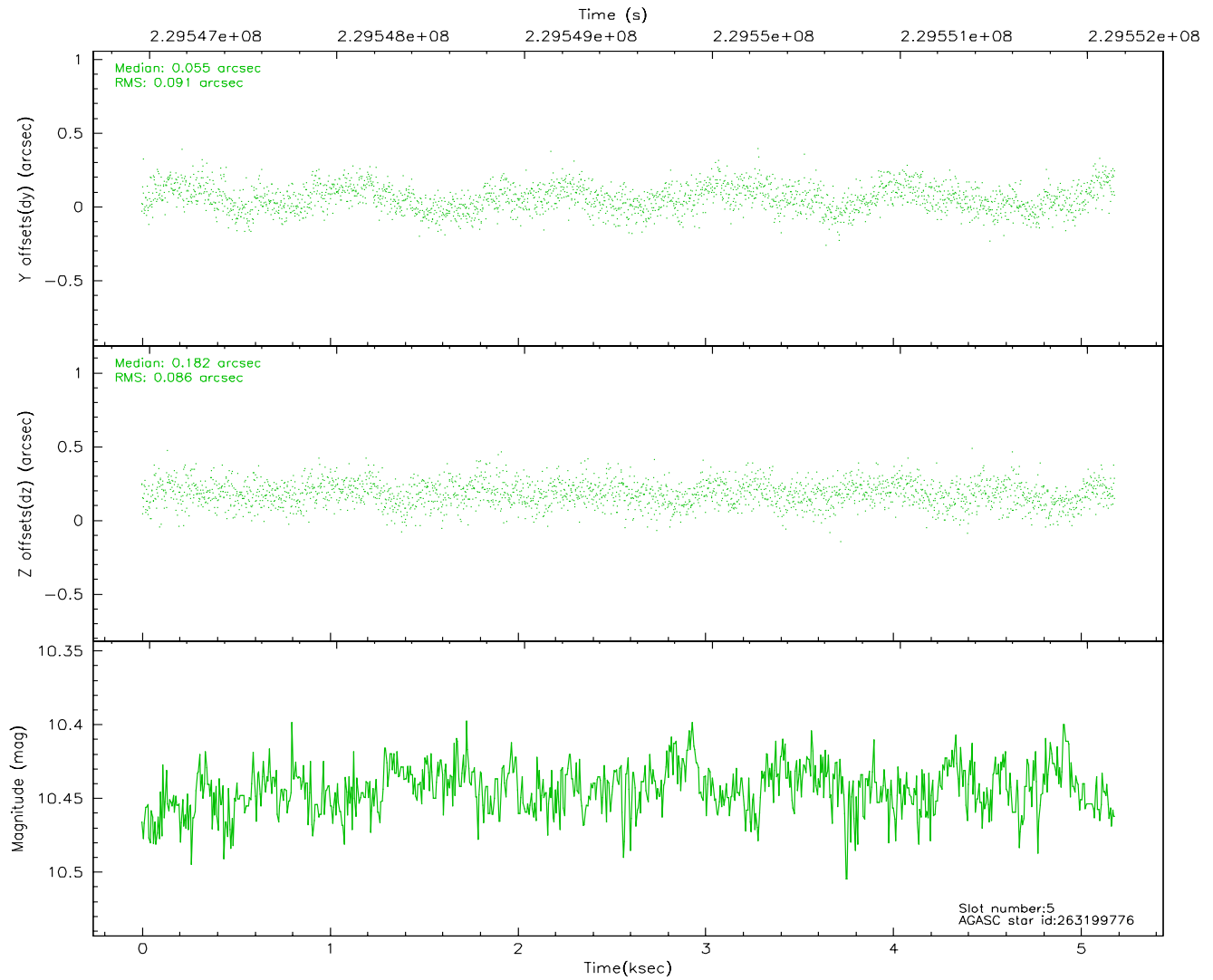
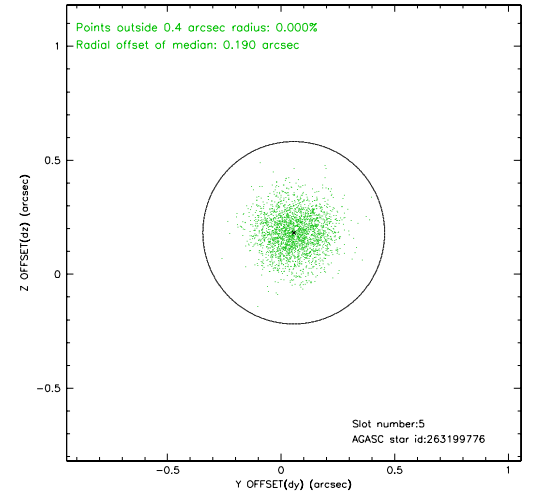
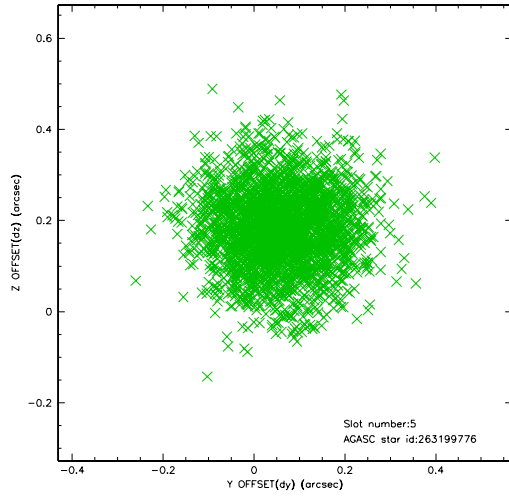
2.4.1 Slot 3



2.4.2 Slot 4

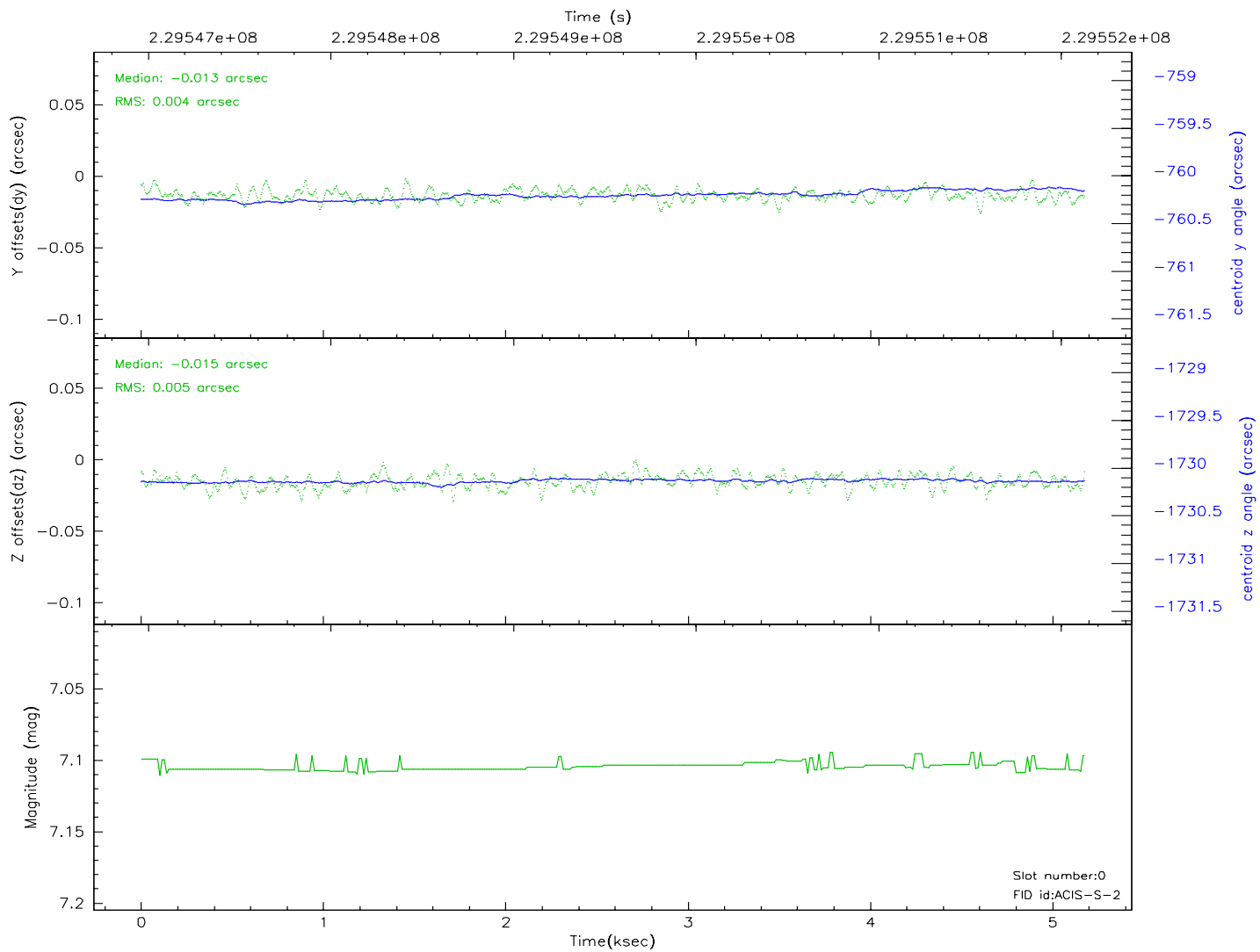
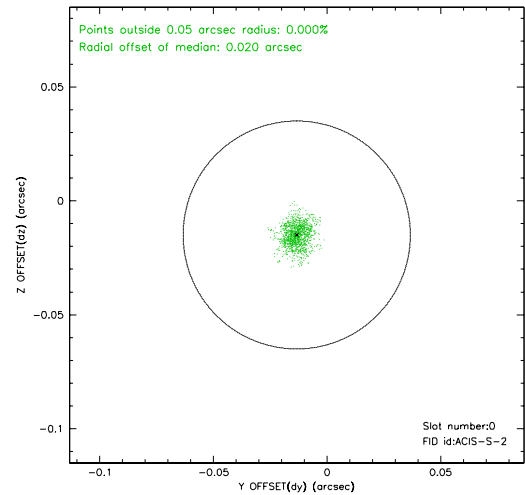
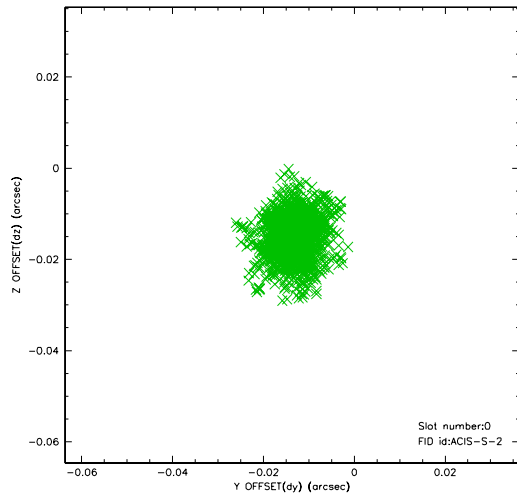


2.4.3 Slot 5

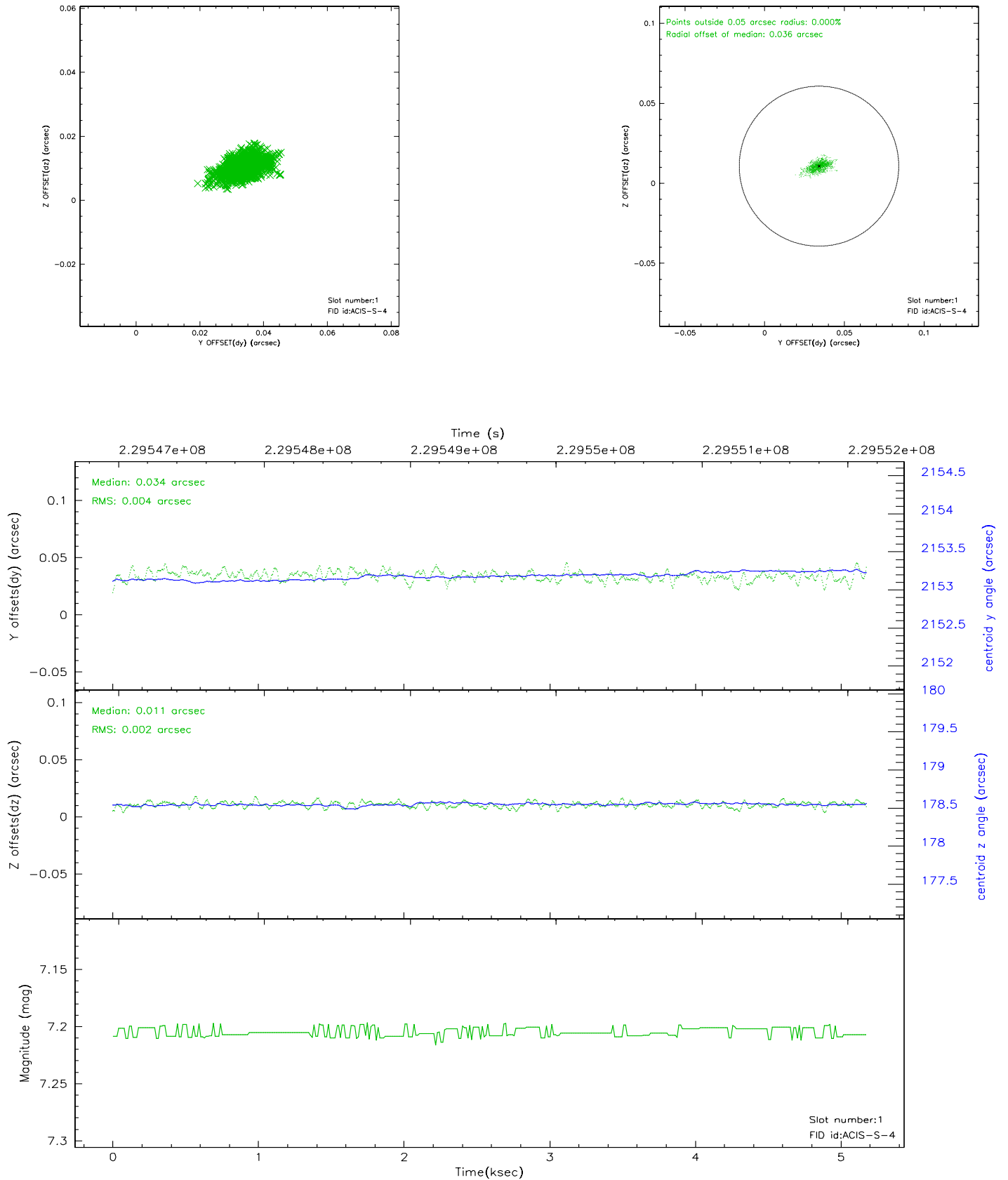


2.5 FID Slots

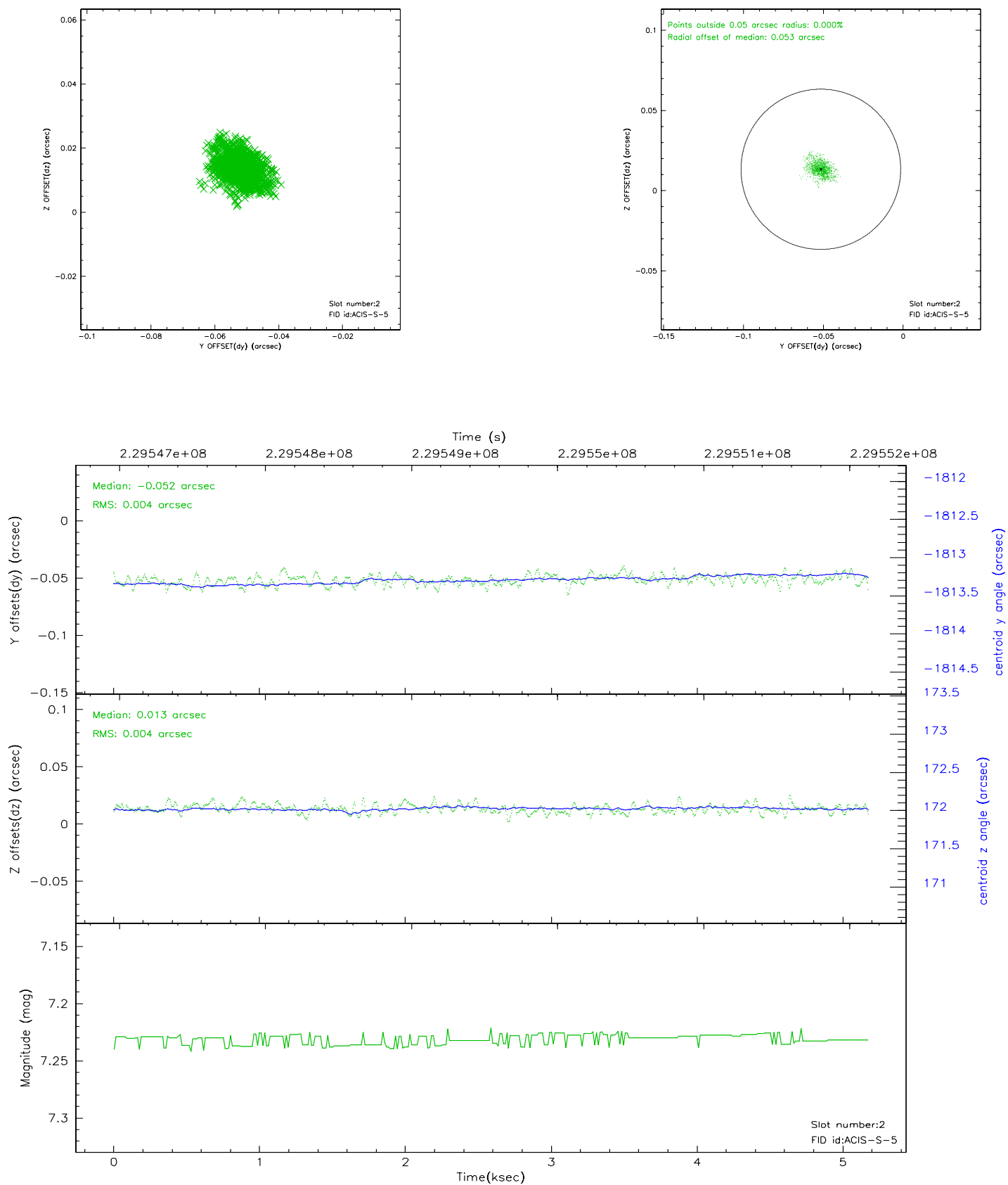
2.5.1 Slot 0



2.5.2 Slot 1



2.5.3 Slot 2



3 Point Sources

3.26 arcmin



A Summary

A.1 Status

V&V Scientist	Beth Sundheim
V&V Date (YYYY-MM-DD)	2010.10.04
V&V Edition	2
V&V Disposition and Status	OK
V&V Charge Time	5.174399

A.2 Comments

The guide stars in slots 6 and 7 were manually excluded from the processing due to poor data quality.