

# V&V Reference Report

## L2 ASCDS Version : 7.6.7.1

Observation 5660 - L2 Version 003  
Chandra X-Ray Center

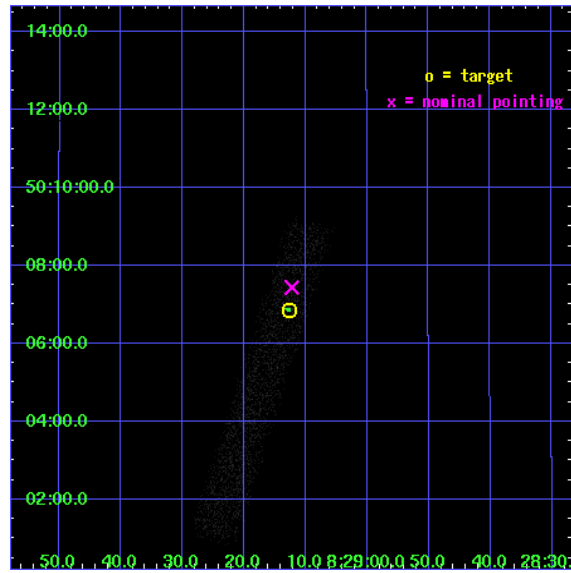
L2 Processing Date : Apr 8 2006

## Contents

<b>1</b>	<b>Front</b>	<b>2</b>
<b>2</b>	<b>OBI</b>	<b>3</b>
2.1	OBI . . . . .	3
2.1.1	Images . . . . .	3
2.1.2	Bias . . . . .	3
2.1.3	Parameters . . . . .	4
2.1.4	Events . . . . .	4
2.2	Compared Parameters . . . . .	5
2.3	Aspect . . . . .	6
2.4	Star Slots . . . . .	9
2.4.1	Slot 3 . . . . .	9
2.4.2	Slot 4 . . . . .	10
2.4.3	Slot 5 . . . . .	11
2.4.4	Slot 6 . . . . .	12
2.4.5	Slot 7 . . . . .	13
2.5	FID Slots . . . . .	14
2.5.1	Slot 0 . . . . .	14
2.5.2	Slot 1 . . . . .	15
2.5.3	Slot 2 . . . . .	16
<b>3</b>	<b>Point Sources</b>	<b>17</b>
<b>A</b>	<b>Summary</b>	<b>18</b>
A.1	Status . . . . .	18
A.2	Comments . . . . .	18

# 1 Front

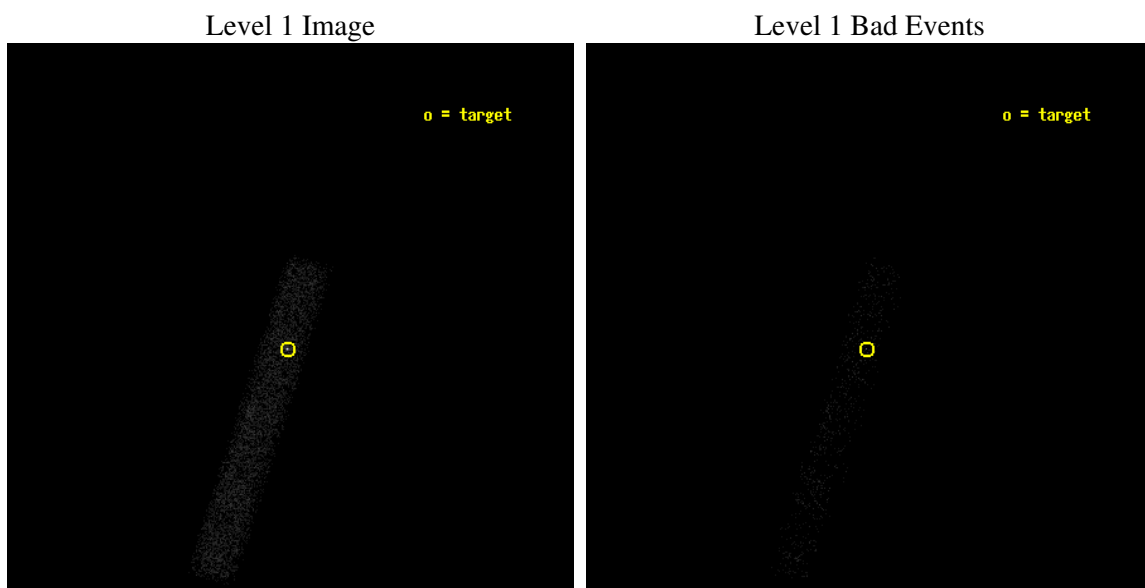
seq_num	701083
obs_id	5660
title	X-ray Properties of AGNs with Intermediate-mass Black Holes
observer	Dr. Luis Ho
object	SDSS J082912.67+500652.3
dtcycle	0
cycle	P
ra_targ	127.302917
dec_targ	50.114528
ra_nom	127.30092607598
dec_nom	50.124115121281
roll_nom	107.59072123
revision	3
ontime	5181.6000772119
livetime	4699.4377627534
ontime7	5181.6000772119
l2events	4173



## 2 OBI

### 2.1 OBI

#### 2.1.1 Images



#### 2.1.2 Bias

Chip 7



### 2.1.3 Parameters

obi_num	0
ascdsver	7.6.7.1
caldbver	3.2.1
date	2006-04-08T17:59:55
revision	3

sched_exp_time	5000.000000
ontime	5214.3691046238
ontime7	5214.3691046238
l1events	8432

### 2.1.4 Events

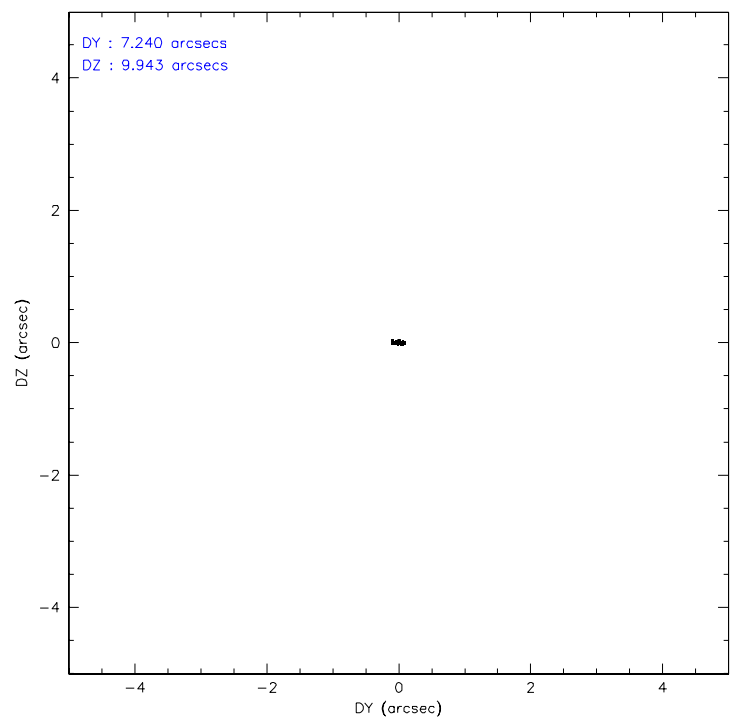
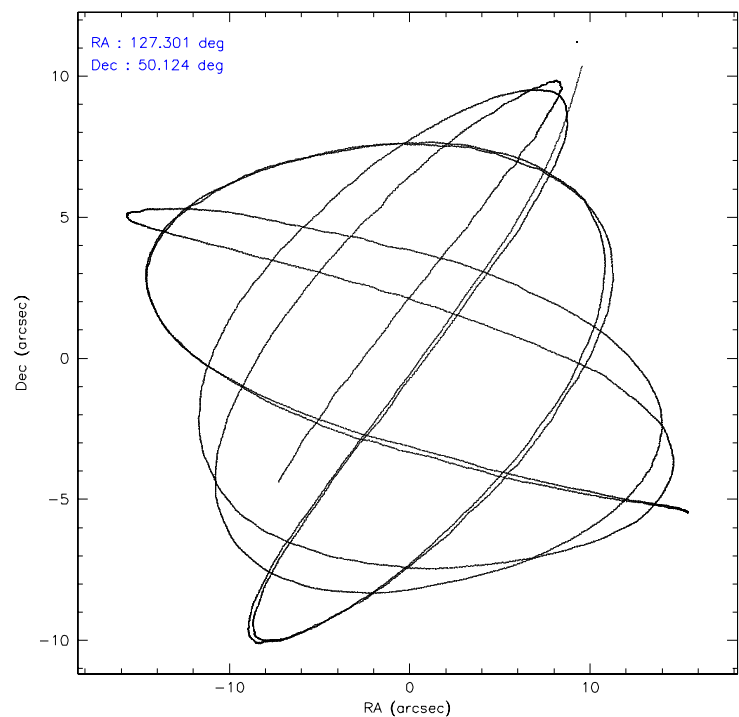
	<b>ccd 7</b>
level 1 events	8432
rejected events	4128
rejected %	48%

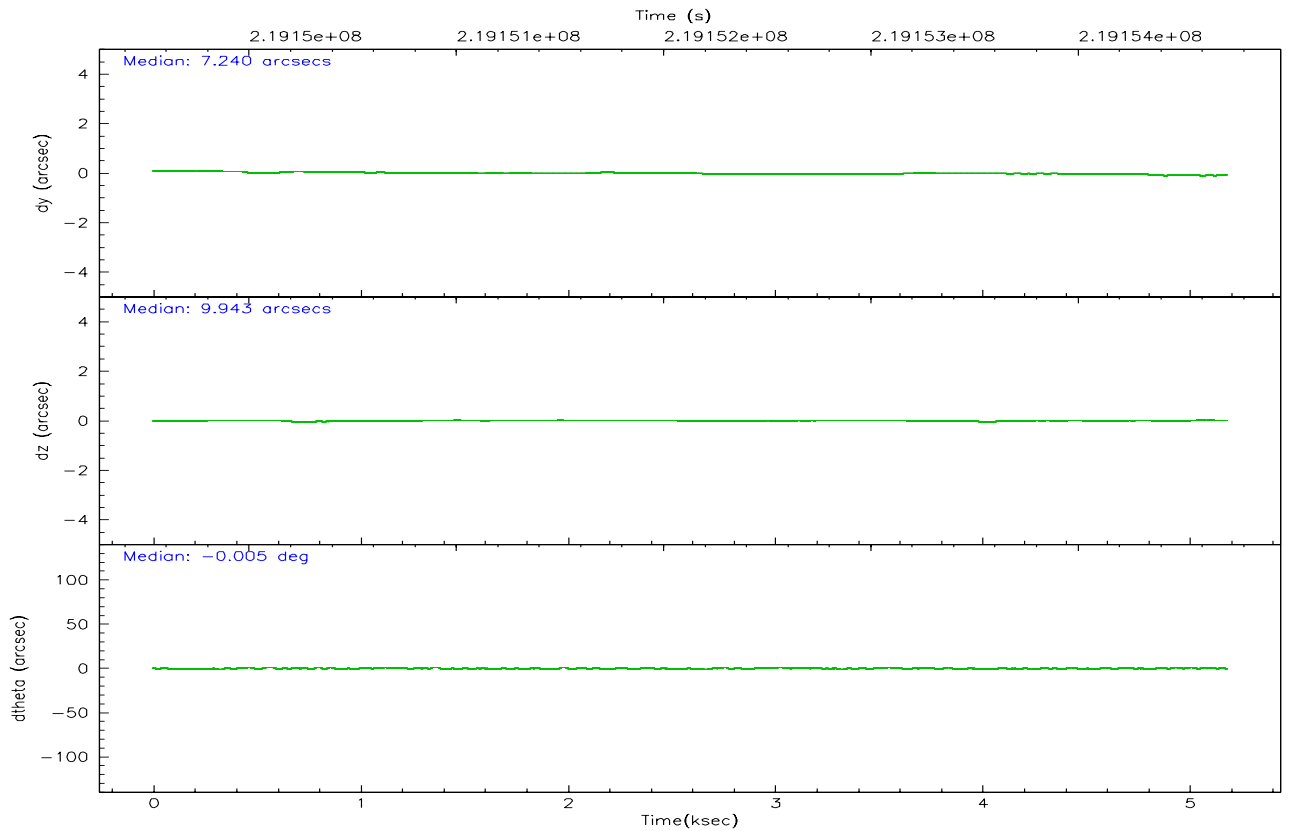
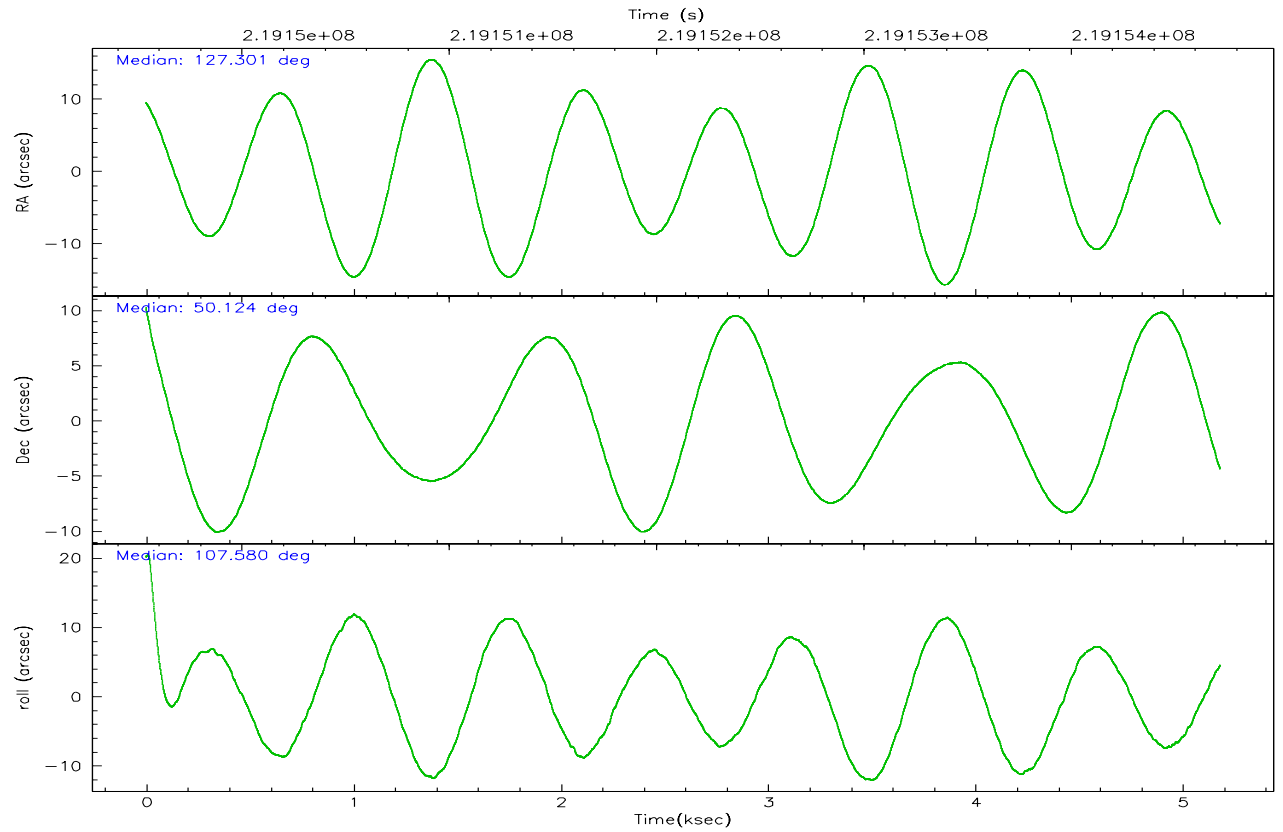
	<b>ccd 7</b>
grade 0 events	624
	7%
grade 1 events	9
	0%
grade 2 events	1029
	12%
grade 3 events	464
	5%
grade 4 events	416
	4%
grade 5 events	534
	6%
grade 6 events	1799
	21%
grade 7 events	3557
	42%

## 2.2 Compared Parameters

Parameter	Planned	Actual	Parameter	Planned	Actual
Instrument	ACIS	ACIS	Obspar format version number	6	6
Detector	ACIS-7	ACIS-7	Obspar file type	PREDICTED	ACTUAL
Grating	NONE	NONE	Obspar update status	NONE	UPDATED
Data mode	FAINT	FAINT	On-chip summing requested	N	N
Observation mode	POINTING	POINTING	Subarray requested	1/8	1/8
Pointing RA	127.332680	127.3009260759751	Subarray start row	0	449
Pointing Dec	50.106017	50.12411512128091	Subarray row count	1024	128
Pointing Roll	107.409650	107.5907212299966	Alternating exposures requested	N	N
SIM focus pos (mm)	-0.684267	-0.6828225247311905	Primary exposure time	0.000000	0.4
SIM defocus (mm)	0	0.001444936568705701			
SIM translation stage pos (mm)	-190.132523	-190.1400660498719			
SIM translation stage offset (mm)	0	0.00754346686406393			
Observation start time	219149714.184000	219149076.18203			
Observation start date	2004-12-11T10:54:10	2004-12-11T10:44:36			
Observation end time	219154714.184000	219155247.19481			
Observation end date	2004-12-11T12:17:30	2004-12-11T12:27:27			
Read mode	TIMED	TIMED			

## 2.3 Aspect





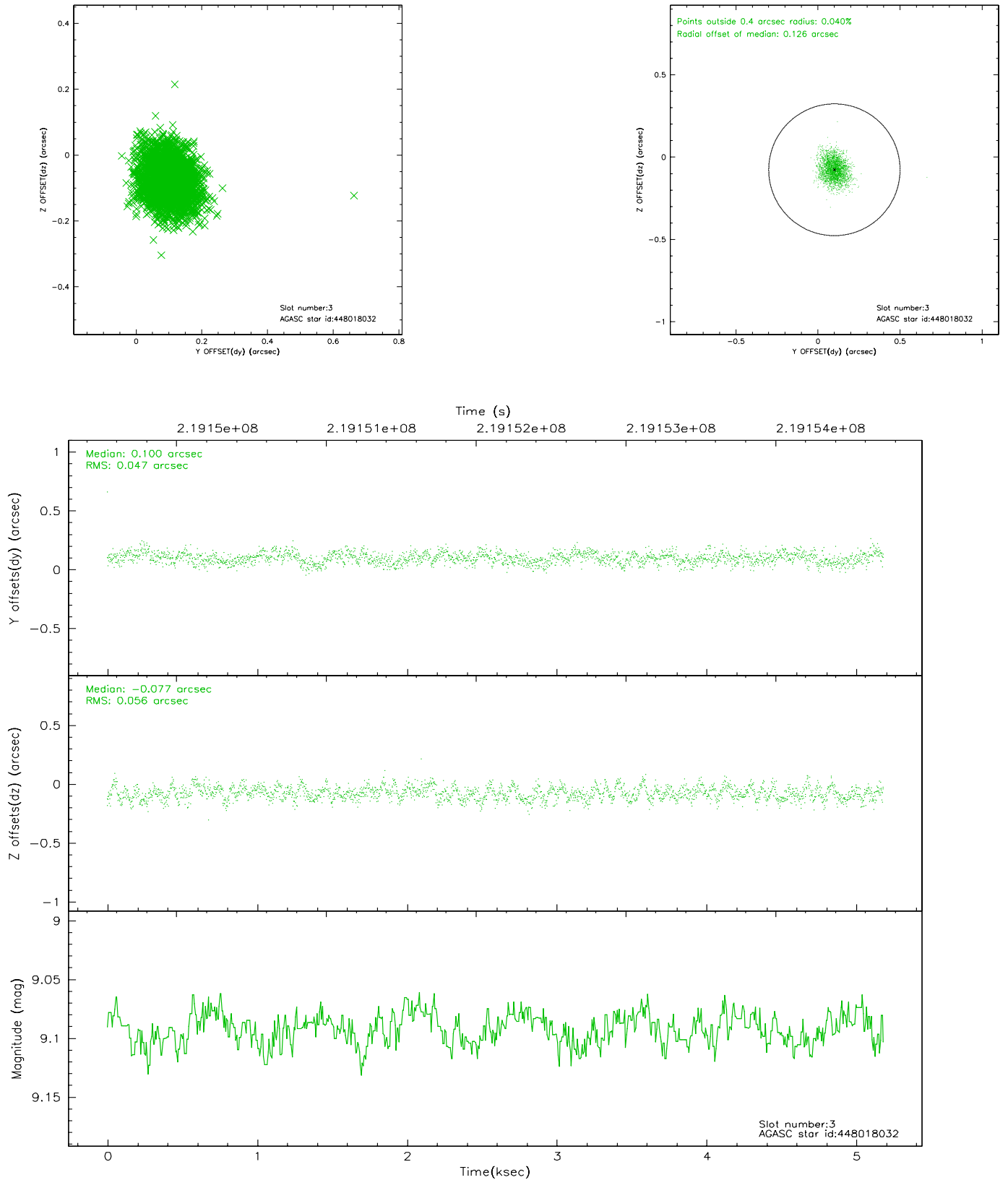
### Slot Statistics

slot	status	id	mag	n_pts	med_dy	med_dz	dr1	dr2	ra	dec	mean_y	mean_z
0	FID	ACIS-S-2	7.10	1264	-0.044	-0.008	0.007	0.011	0.000000	0.000000	-760.00	-1731.21
1	FID	ACIS-S-4	7.20	1264	0.063	0.023	0.005	0.008	0.000000	0.000000	2152.81	176.16
2	FID	ACIS-S-5	7.23	1264	-0.050	-0.007	0.006	0.010	0.000000	0.000000	-1811.39	171.04
3	GUIDE	448018032	9.09	2528	0.100	-0.077	0.078	0.125	126.828256	49.922135	-278.21	1312.54
4	GUIDE	448020168	7.67	2529	0.091	-0.182	0.093	0.141	127.086143	49.687322	-1265.72	999.13
5	GUIDE	448400920	8.54	2529	0.006	0.045	0.109	0.164	127.310262	50.436465	1150.22	-306.19
6	GUIDE	448538280	7.56	2529	-0.070	0.112	0.074	0.127	127.979312	50.616688	1317.82	-1960.23
7	GUIDE	448540800	8.17	2525	-0.132	0.095	0.075	0.121	127.929128	50.708924	1670.36	-1948.70

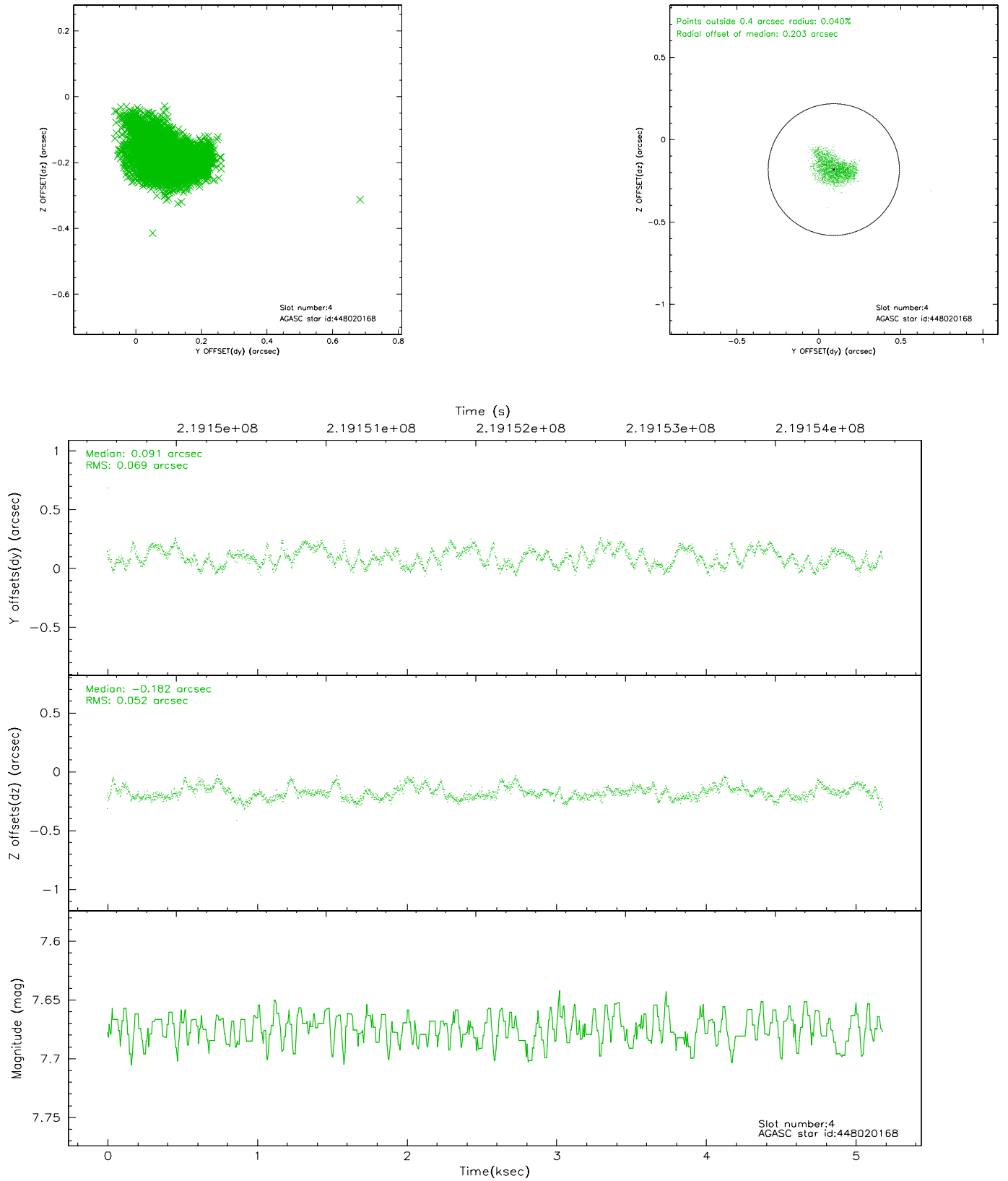


## 2.4 Star Slots

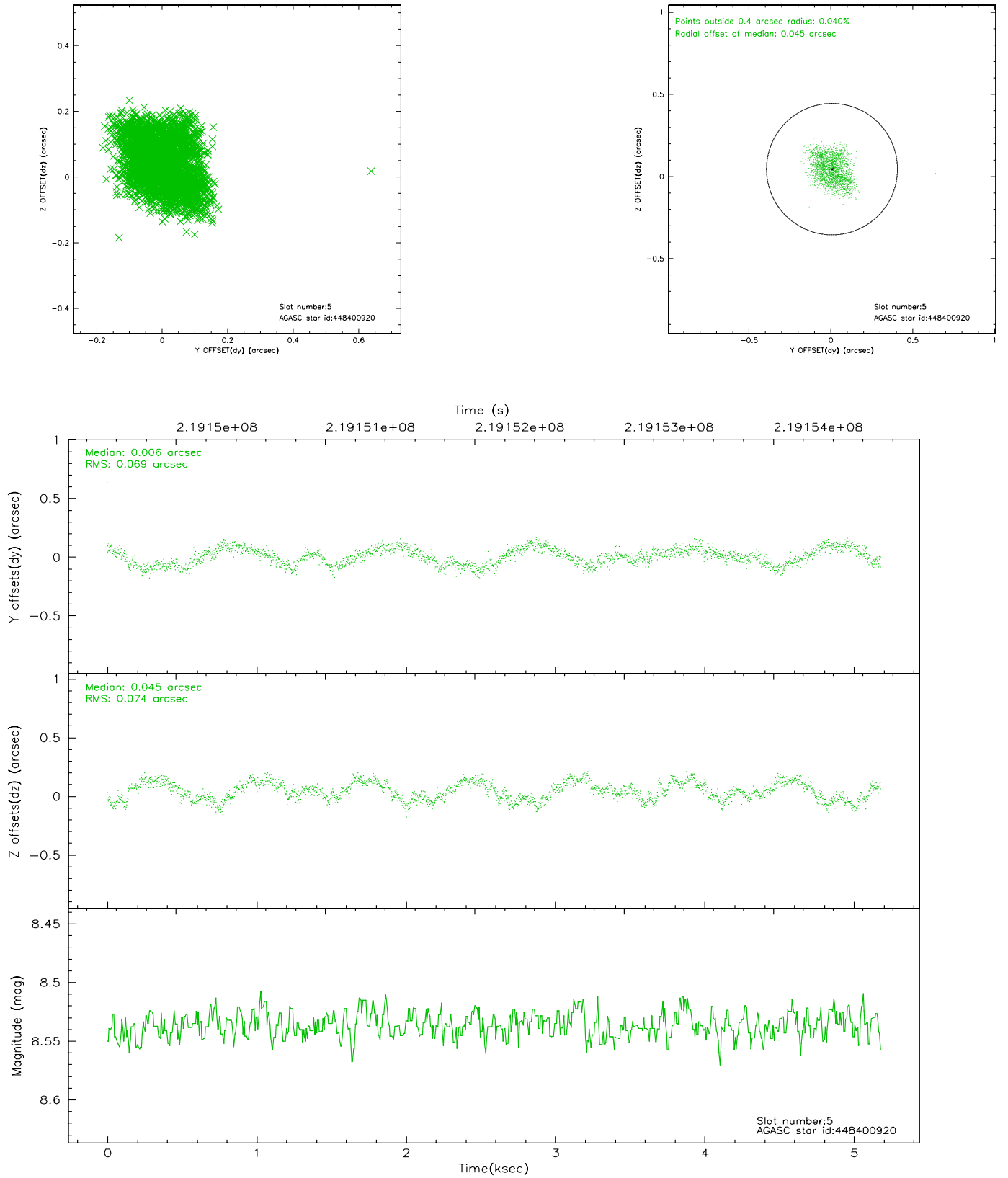
### 2.4.1 Slot 3



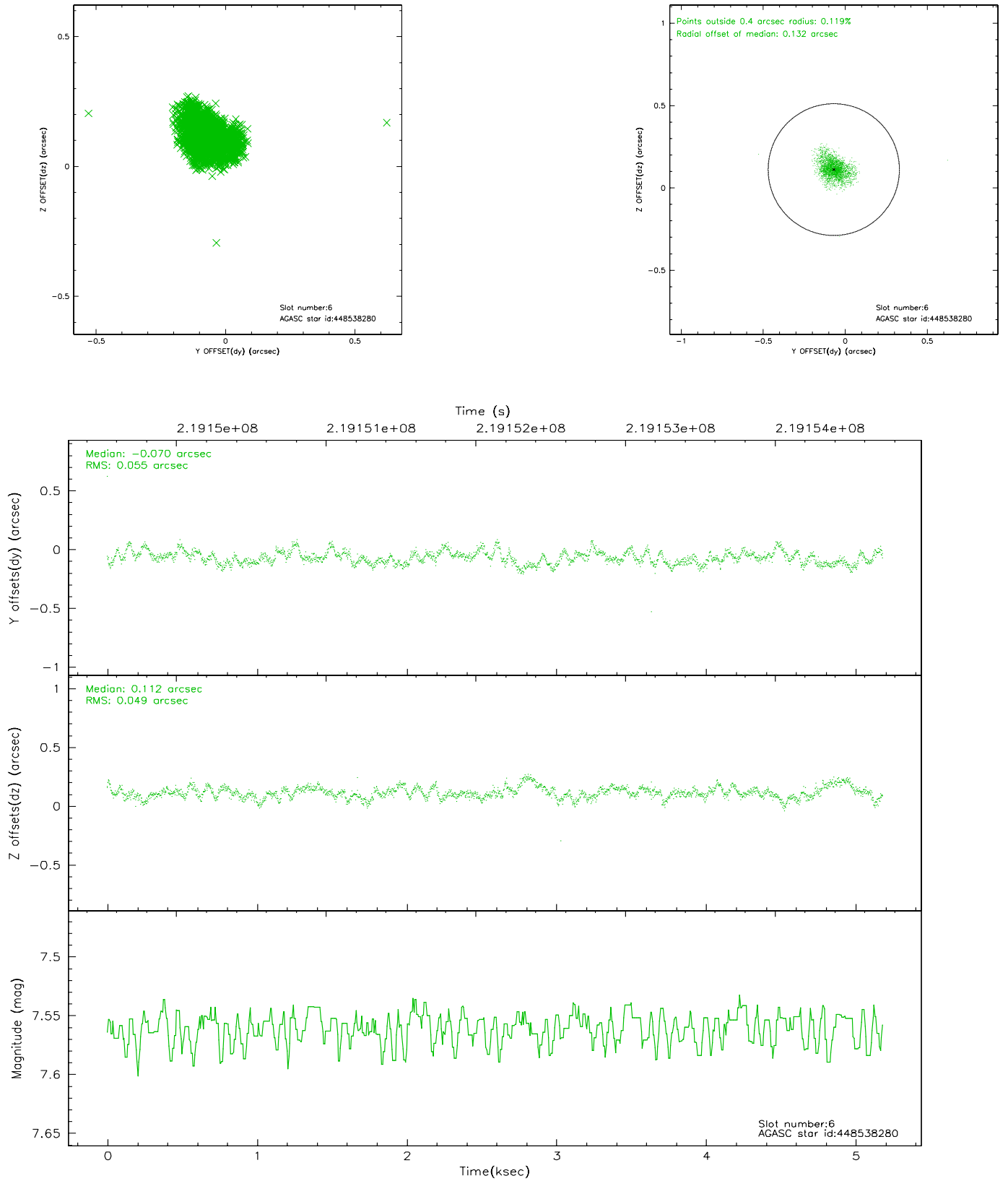
## 2.4.2 Slot 4



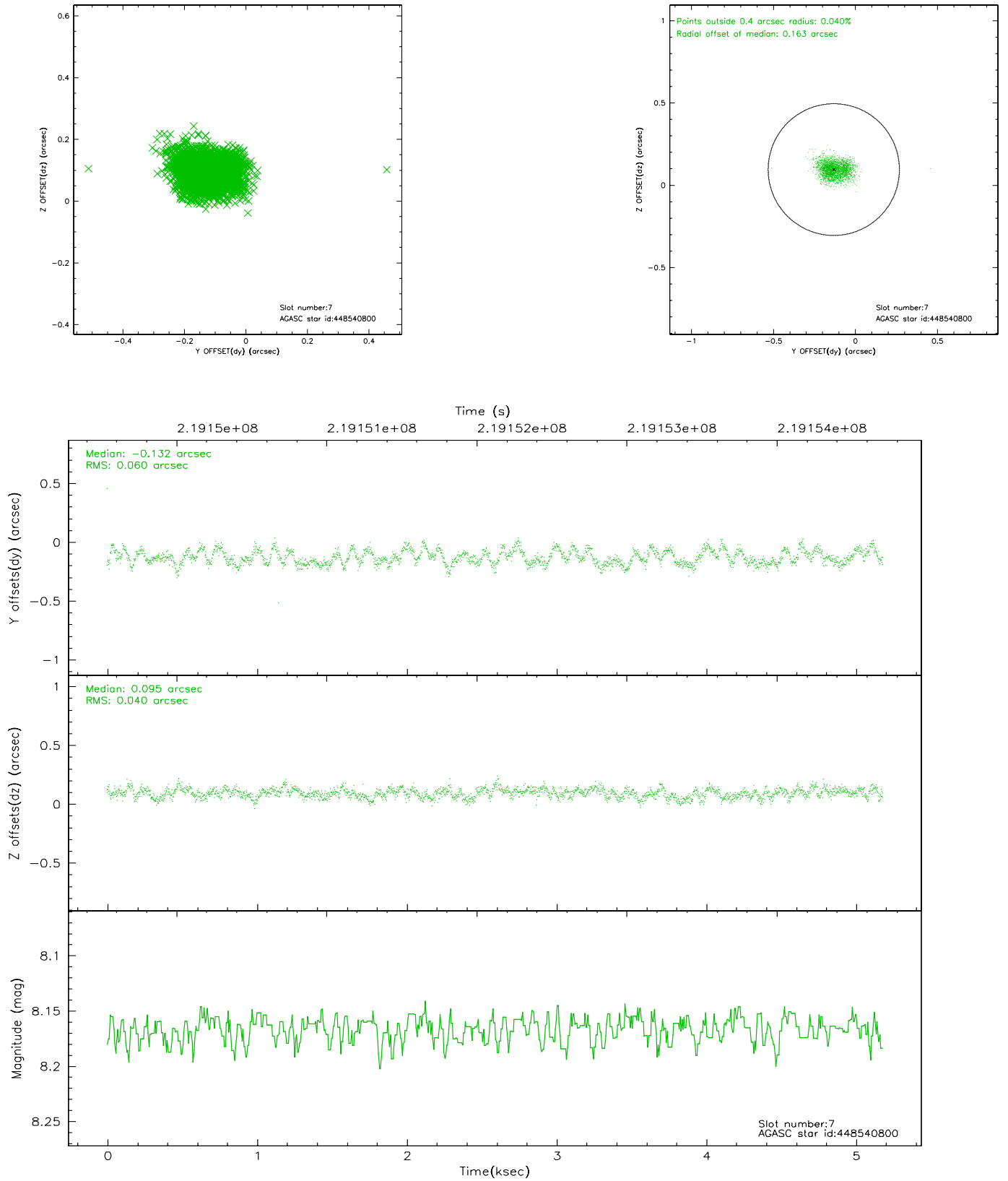
### 2.4.3 Slot 5



## 2.4.4 Slot 6

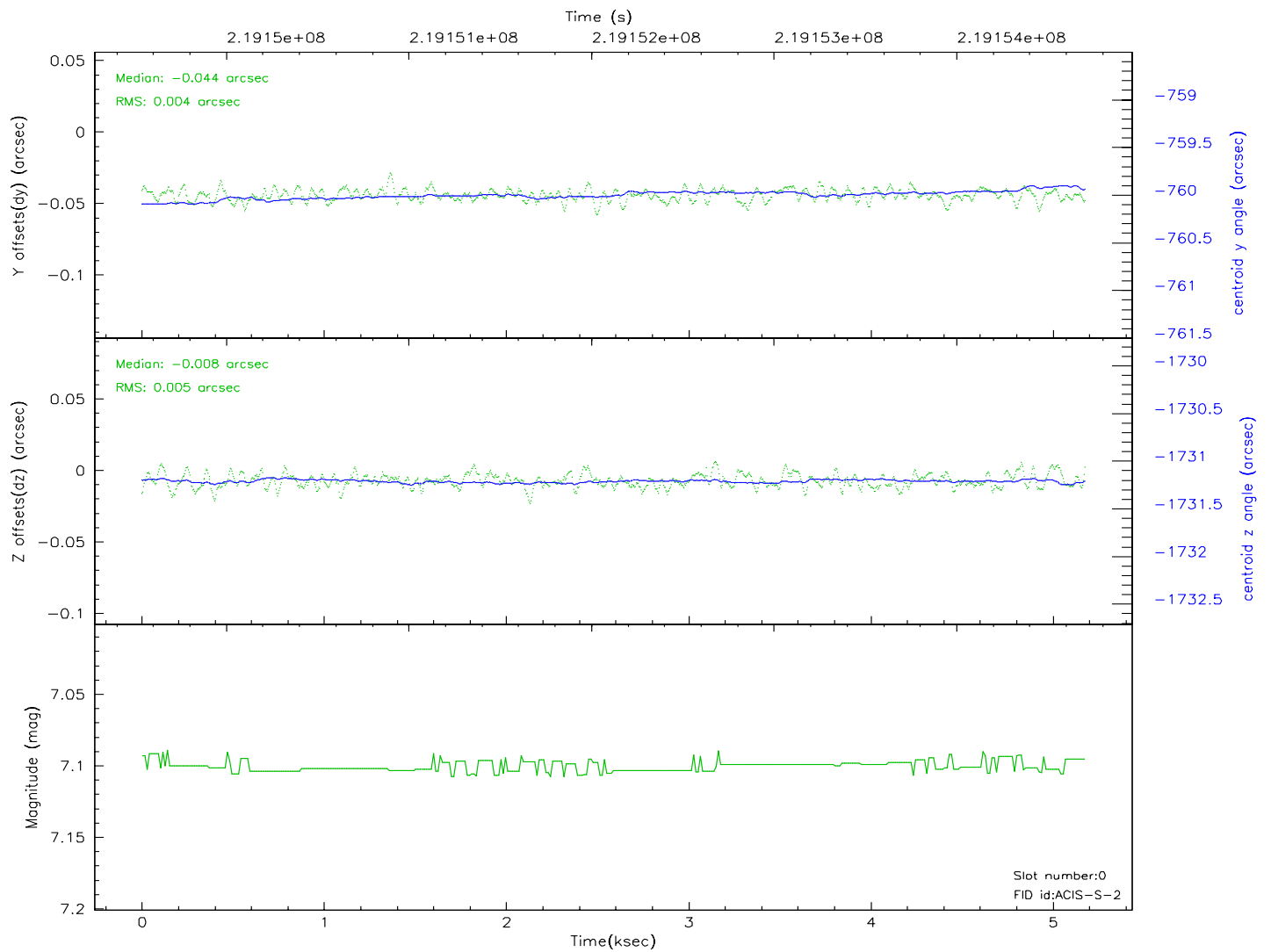
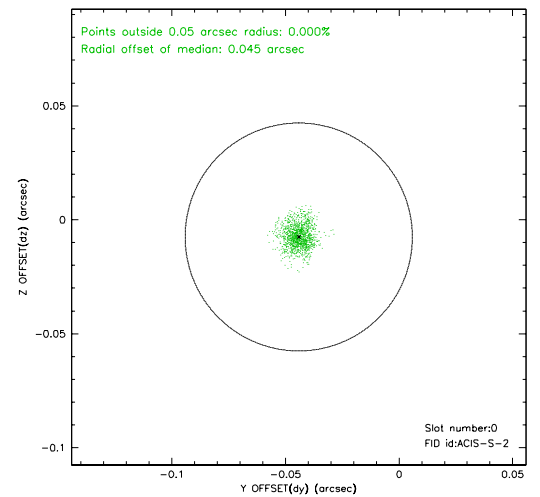
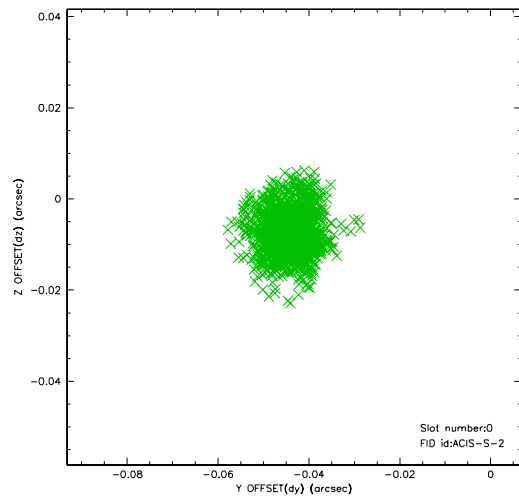


## 2.4.5 Slot 7

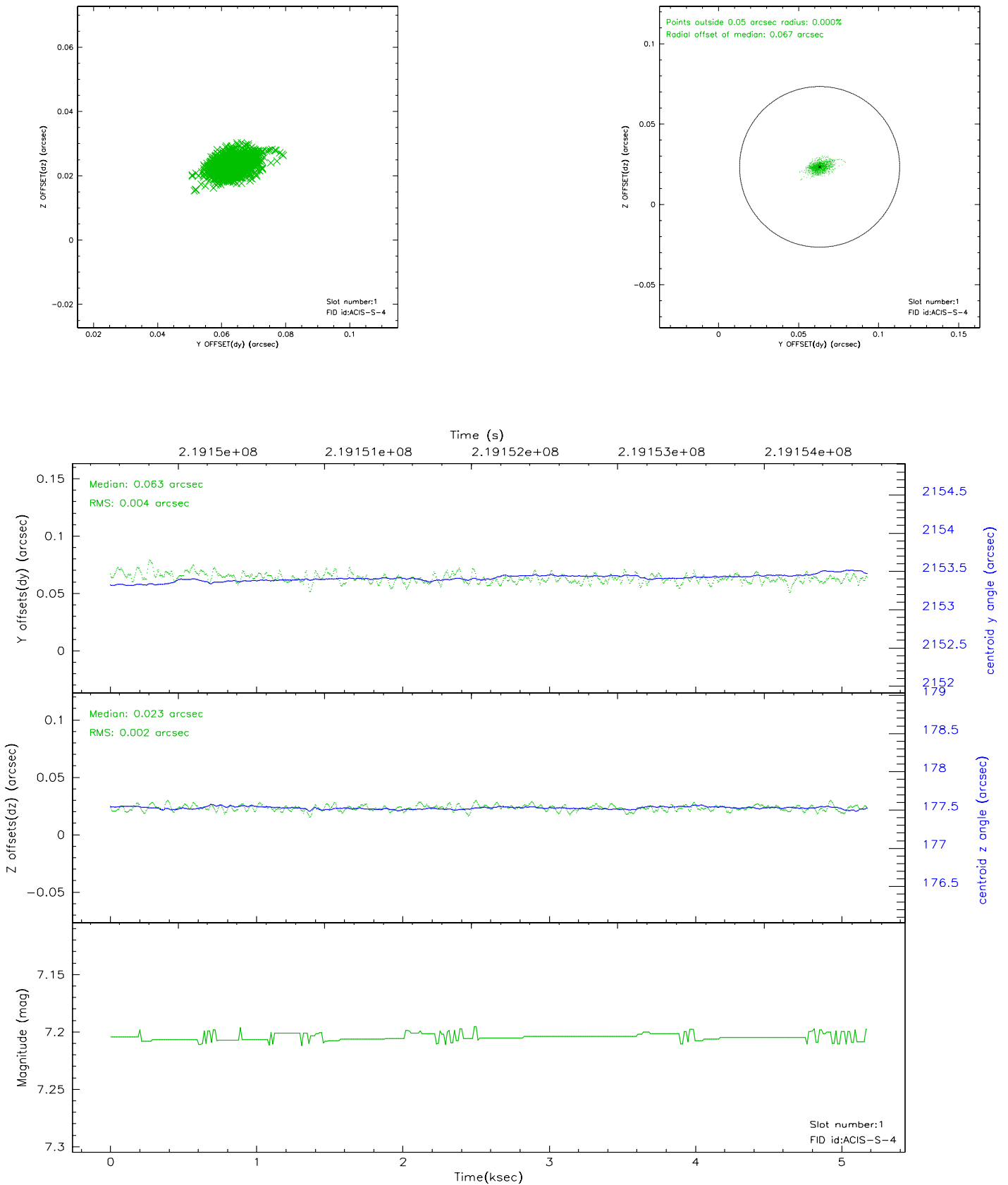


## 2.5 FID Slots

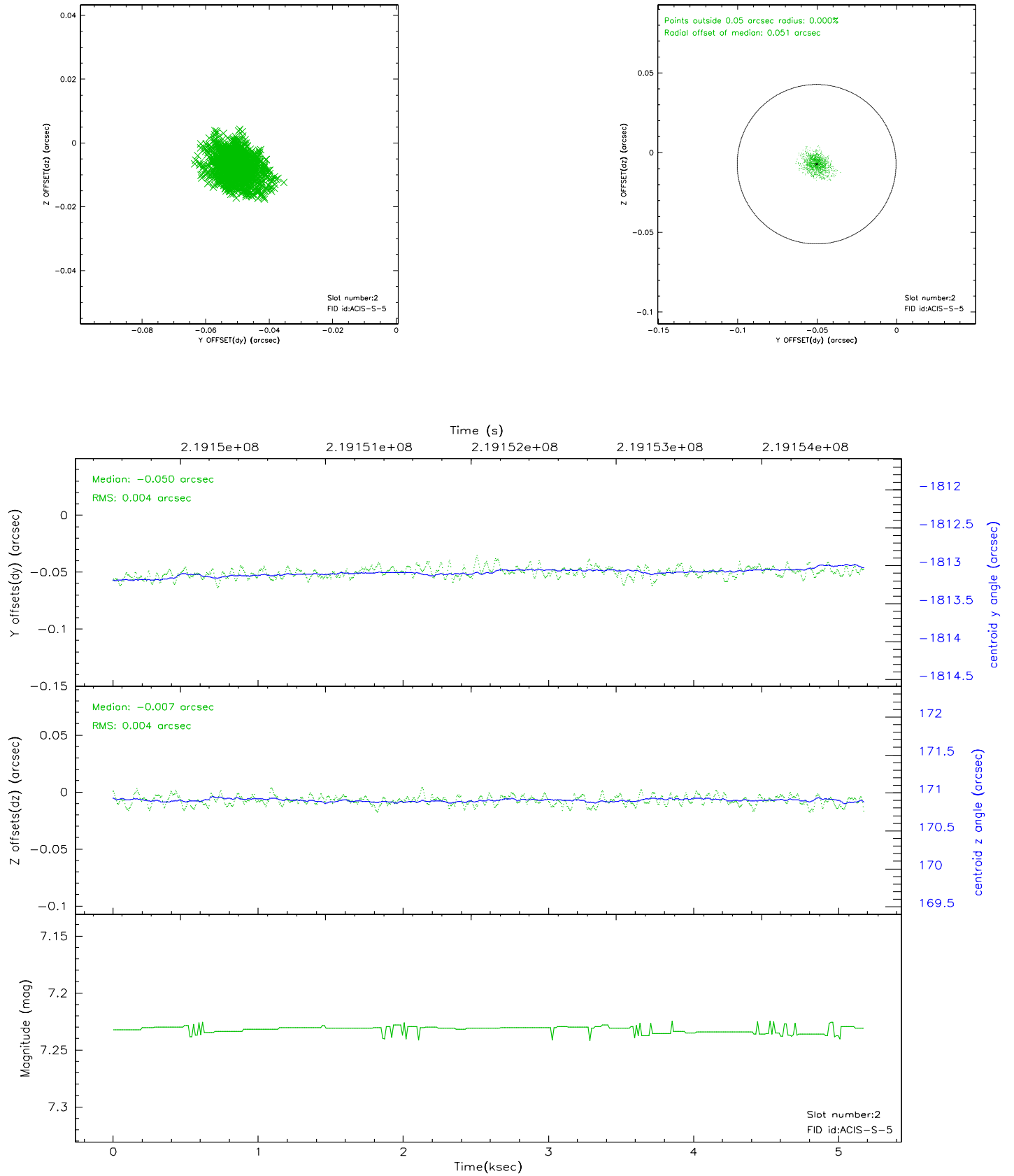
### 2.5.1 Slot 0



## 2.5.2 Slot 1



### 2.5.3 Slot 2





### 3 Point Sources

## A Summary

### A.1 Status

V&V Scientist	Jen Lauer
V&V Date (YYYY-MM-DD)	2006.04.10
V&V Edition	1
V&V Disposition and Status	OK
V&V Charge Time	5.1816

### A.2 Comments