

V&V Reference Report

L2 ASCDS Version : 8.5.1.1

Observation 5658 - L2 Version 3
Chandra X-Ray Center

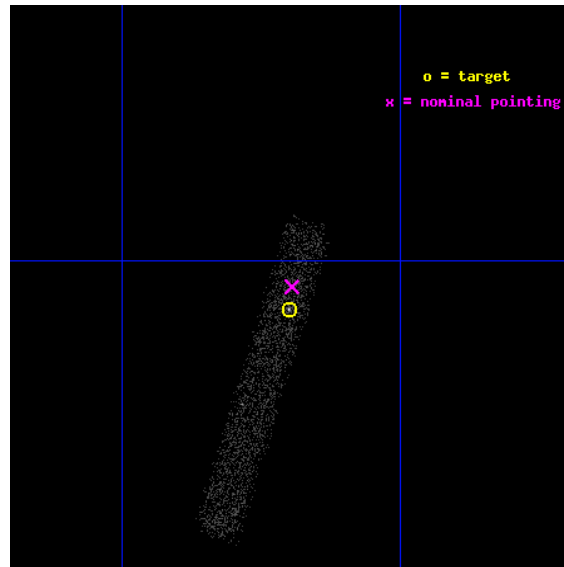
L2 Processing Date : Dec 23 2012

Contents

1	Front	2
2	OBI	3
2.1	OBI	3
2.1.1	Images	3
2.1.2	Bias	3
2.1.3	Parameters	4
2.1.4	Events	4
2.2	Compared Parameters	5
2.3	Aspect	6
2.4	Star Slots	9
2.4.1	Slot 3	9
2.4.2	Slot 4	10
2.4.3	Slot 5	11
2.4.4	Slot 6	12
2.4.5	Slot 7	13
2.5	FID Slots	14
2.5.1	Slot 0	14
2.5.2	Slot 1	15
2.5.3	Slot 2	16
A	Summary	17
A.1	Status	17
A.2	Comments	17

1 Front

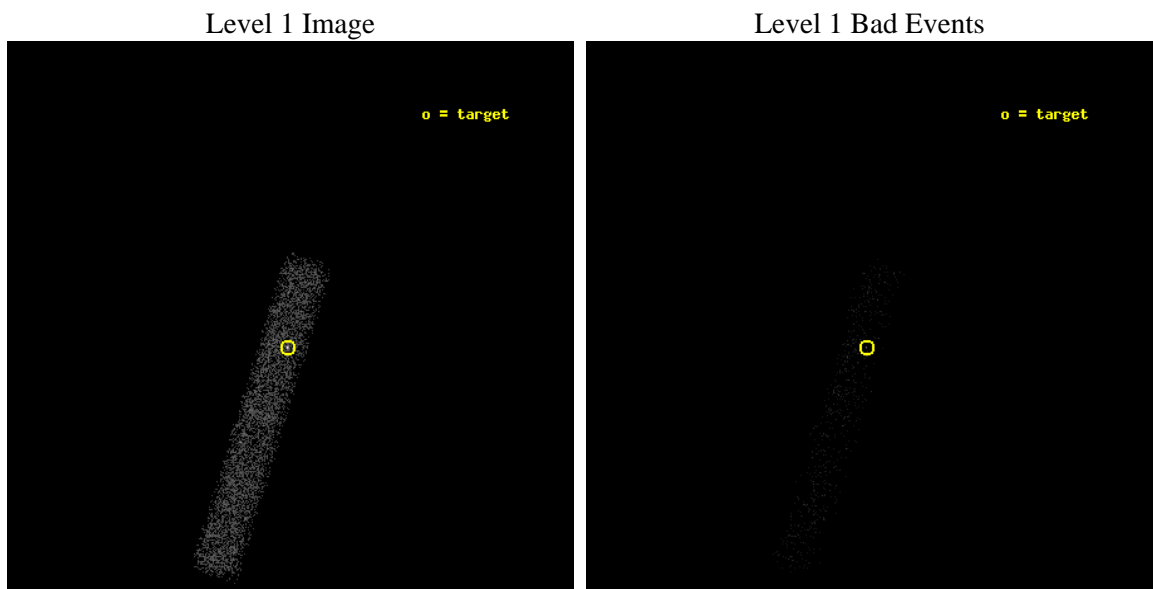
seq_num	701081	Sequence number
obs_id	5658	Observation id
title	X-ray Properties of AGNs with Intermediate-mass Black Holes	Propos
observer	Dr. Luis Ho	Principal investigator
object	SDSS J010712.03+140844.9	Source name
dtcycle	0	
cycle	P	events from which exps? Prim/Second/Both
ra_targ	16.8	Observer's specified target RA [deg]
dec_targ	14.145806	Observer's specified target Dec [deg]
ra_nom	16.798800997308	Nominal RA [deg]
dec_nom	14.155542413043	Nominal Dec [deg]
roll_nom	107.03434176966	Nominal Roll [deg]
revision	3	Processing version of data
ontime	5007.2000745833	Sum of GTIs [s]
livetime	4541.2661659562	Livetime [s]
ontime7	5007.2000745833	Sum of GTIs [s]
l2events	4116	Number of level 2 events



2 OBI

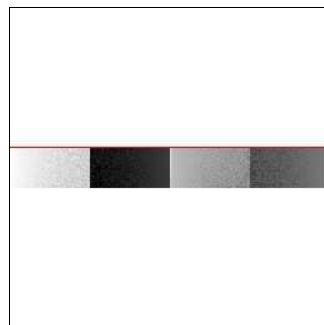
2.1 OBI

2.1.1 Images



2.1.2 Bias

Chip 7



2.1.3 Parameters

obi_num	0	Obi number	sched_exp_time	5000.000000	[s] Scheduled observation exposure time
ascdsver	8.5.1.1	Processing system revision	ontime	5007.2000745833	Sum of GTIs [s]
caldsver	4.5.5	 	ontime7	5007.2000745833	Sum of GTIs [s]
date	2012-12-23T18:14:20	Date and time of file creation	l1events	7877	Number of level 1 events
revision	3	Processing version of data			

2.1.4 Events

	ccd 7
level 1 events	7877
rejected events	3625
rejected %	46%

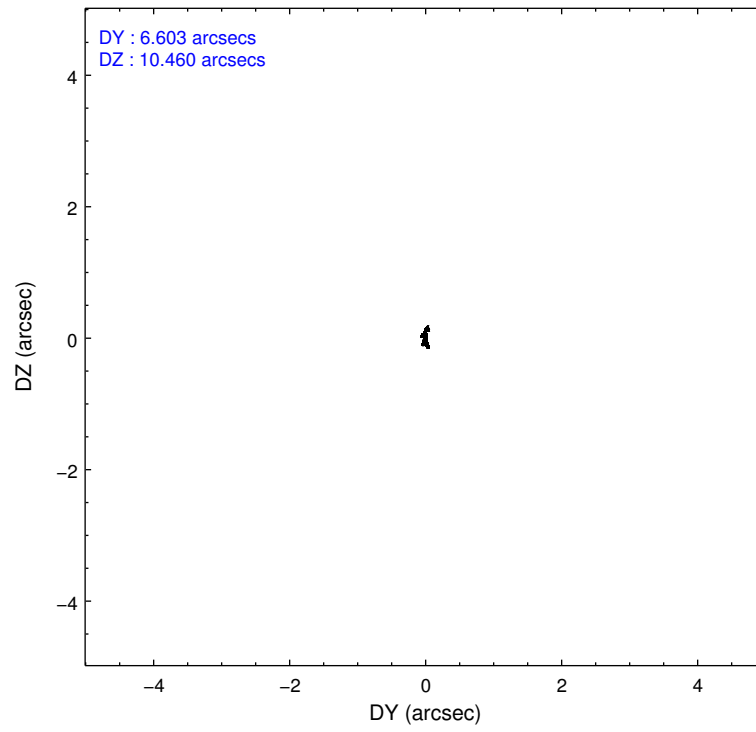
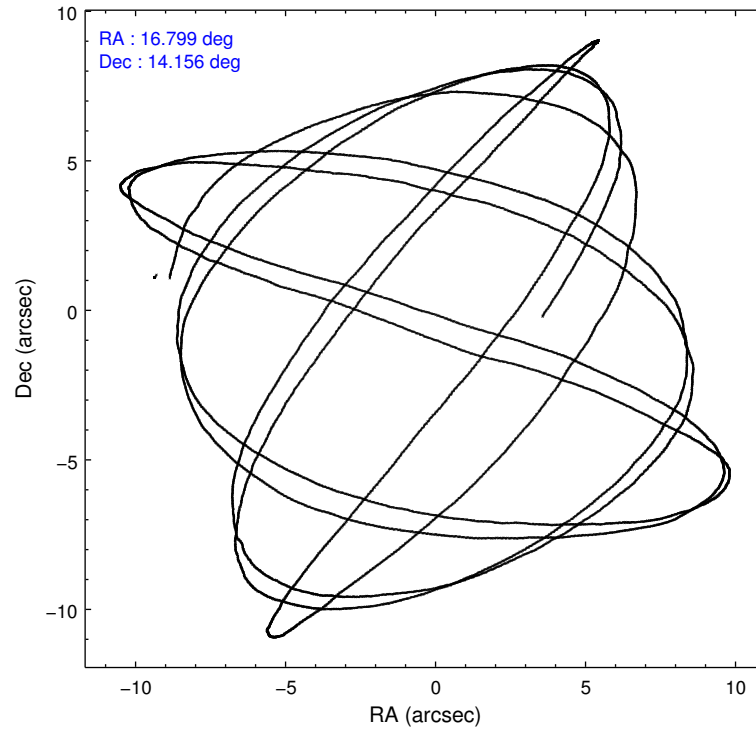
	ccd 7
grade 0 events	787
	9%
grade 1 events	8
	0%
grade 2 events	854
	10%
grade 3 events	536
	6%
grade 4 events	492
	6%
grade 5 events	602
	7%
grade 6 events	1583
	20%
grade 7 events	3015
	38%

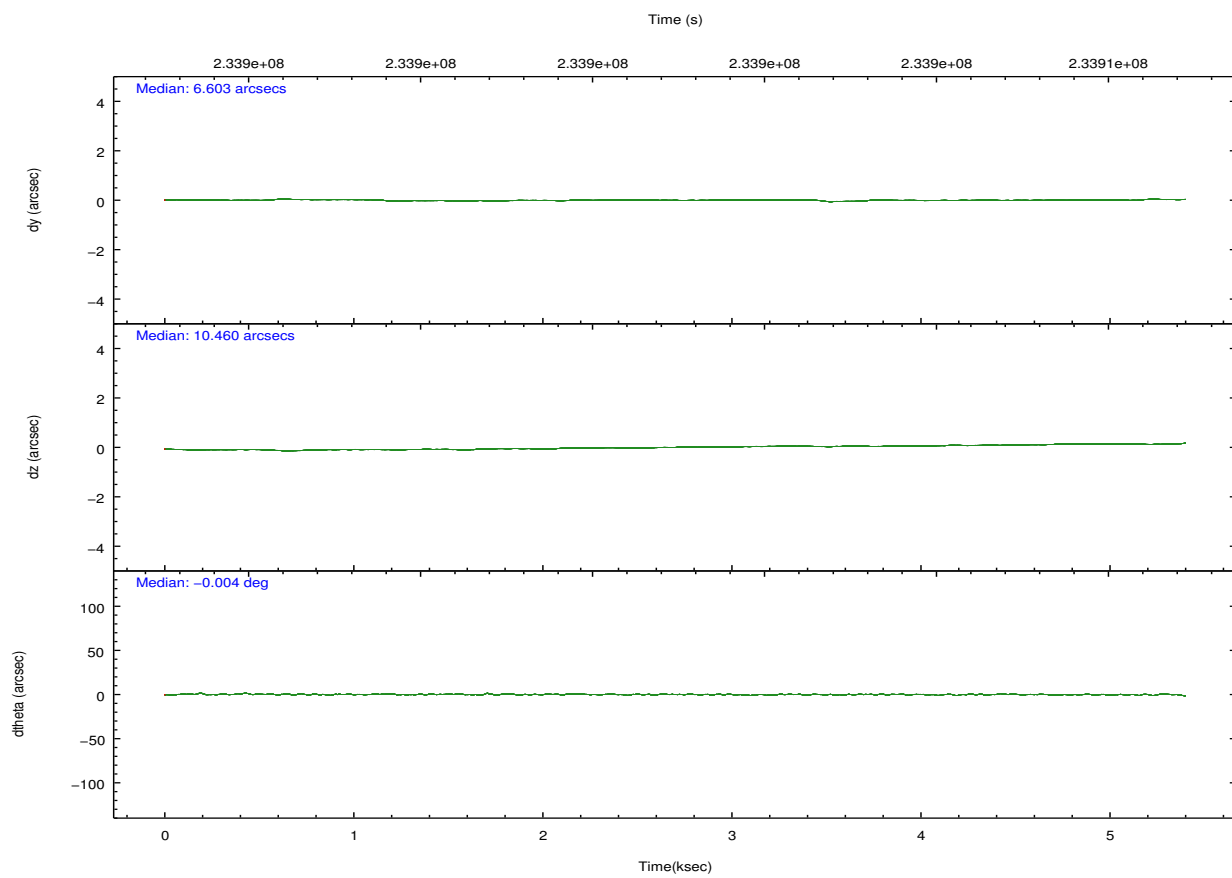
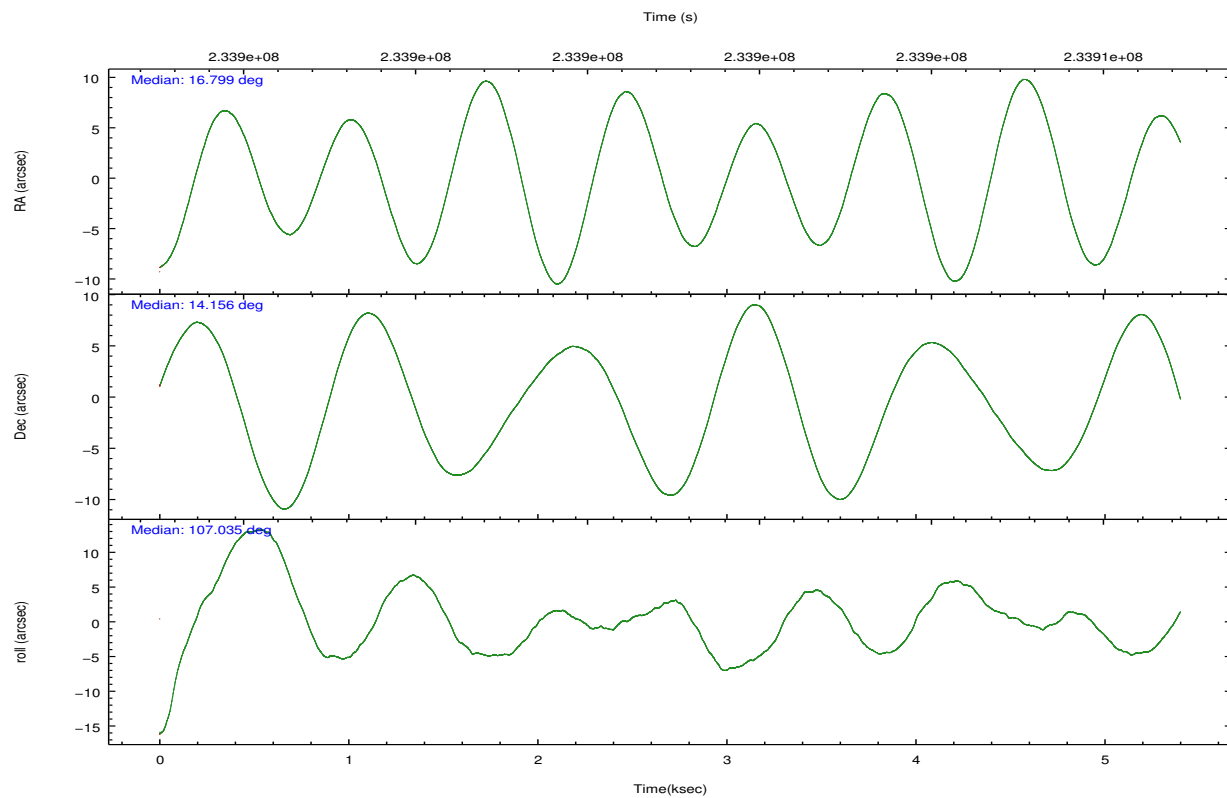
2.2 Compared Parameters

Parameter	Planned	Actual
Instrument	ACIS	ACIS
Detector	ACIS-7	ACIS-7
Grating	NONE	NONE
Data mode	FAINT	FAINT
Observation mode	POINTING	POINTING
[deg] Pointing RA	16.819597	16.7988009973078
[deg] Pointing Dec	14.137114	14.15554241304335
[deg] Pointing Roll	106.872650	107.0343417696584
[mm] SIM focus pos	-0.684267	-0.6828225247311905
[mm] SIM defocus	0	0.001444936568705701
[mm] SIM translation stage pos	-190.132523	-190.1400660498719
[mm] SIM translation stage offset	0	0.00754346686406393
[s] Observation start time (MET)	233901184.184000	233900487.3504
Observation start date	2005-05-31T04:32:00	2005-05-31T04:21:27
[s] Observation end time (MET)	233906184.184000	233907153.9507
Observation end date	2005-05-31T05:55:20	2005-05-31T06:12:33
Read mode	TIMED	TIMED

Parameter	Planned	Actual
Obspar format version number	7	7
Obspar file type	PREDICTED	ACTUAL
Obspar update status	NONE	UPDATED
Number of optional ACIS chips dropped	0	0
On-chip summing requested	N	N
Subarray requested	CUSTOM	1/8
Subarray start row	449	449
Subarray row count	128	128
Alternating exposures requested	N	N
[s] Primary exposure time	0.000000	0.4

2.3 Aspect



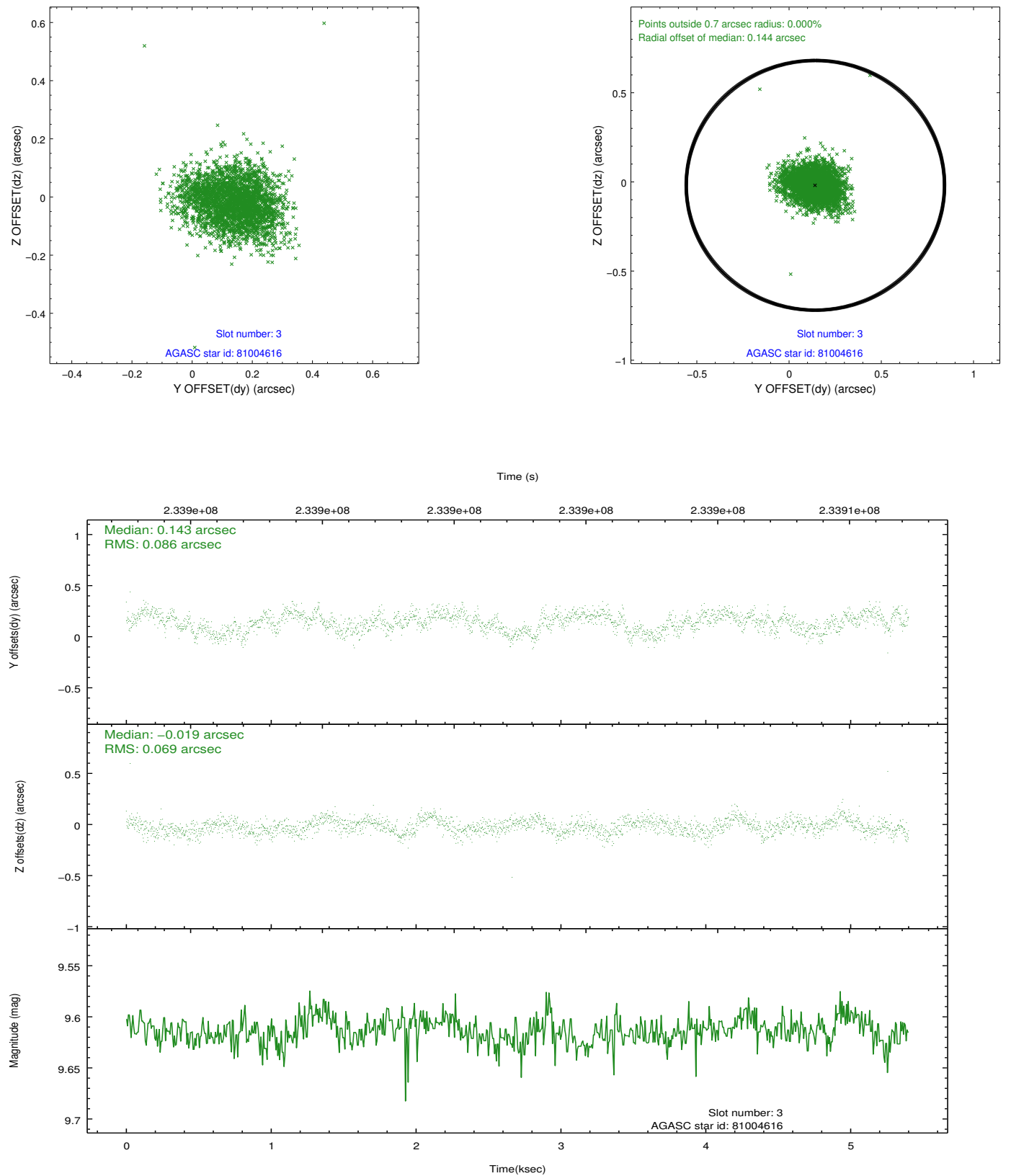


Slot Statistics

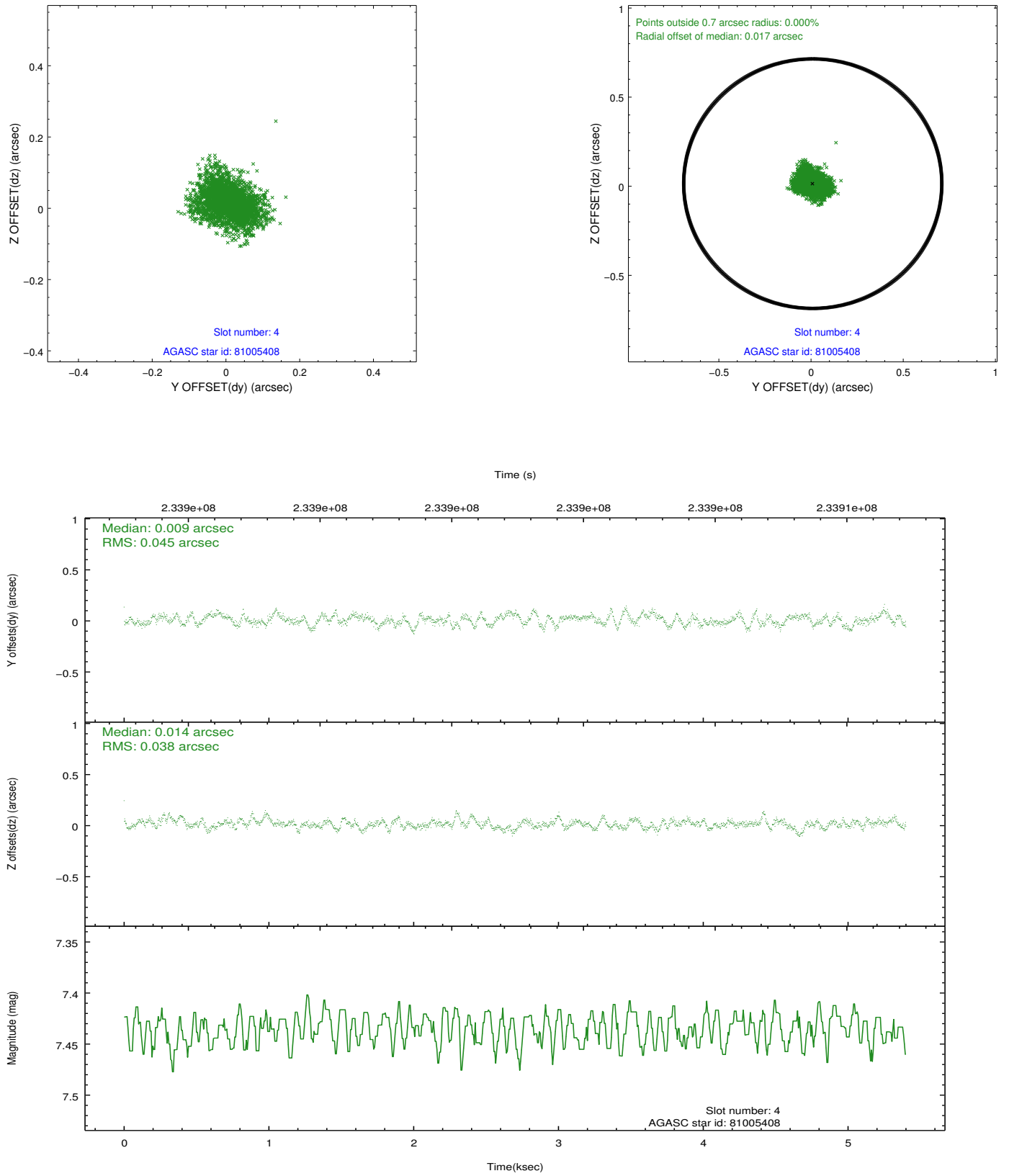
slot	status	id	mag	n_pts	med_dy	med_dz	dr1	dr2	ra	dec	mean_y	mean_z
0	FID	ACIS-S-2	7.09	1318	-0.063	-0.043	0.005	0.009	0.000000	0.000000	-759.39	-1731.77
1	FID	ACIS-S-4	7.20	1318	0.056	0.031	0.006	0.010	0.000000	0.000000	2153.48	175.66
2	FID	ACIS-S-6	7.35	1318	-0.021	0.018	0.006	0.011	0.000000	0.000000	404.05	814.30
3	GUIDE	81004616	9.61	2629	0.143	-0.019	0.116	0.186	16.727653	13.590154	-1791.24	880.03
4	GUIDE	81005408	7.43	2635	0.009	0.014	0.063	0.103	16.652176	13.884607	-701.20	824.16
5	GUIDE	81007168	9.80	2622	-0.102	-0.068	0.118	0.193	16.177367	14.233739	985.57	2043.40
6	GUIDE	81007240	8.58	2630	-0.165	-0.094	0.078	0.122	16.347652	14.108108	379.77	1607.65
7	GUIDE	81009232	8.69	2630	0.119	0.172	0.070	0.113	17.046481	13.691825	-1764.10	-293.15

2.4 Star Slots

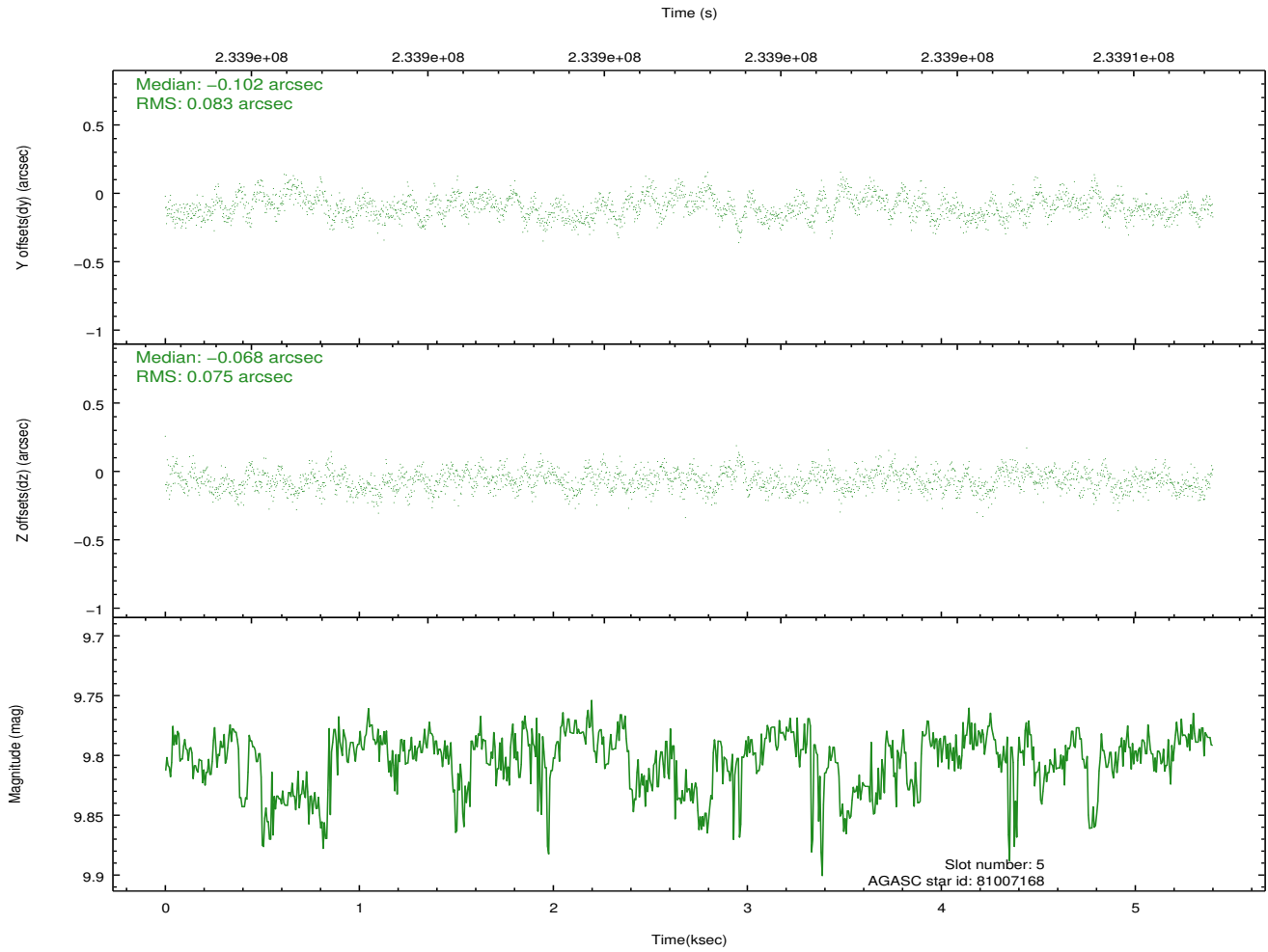
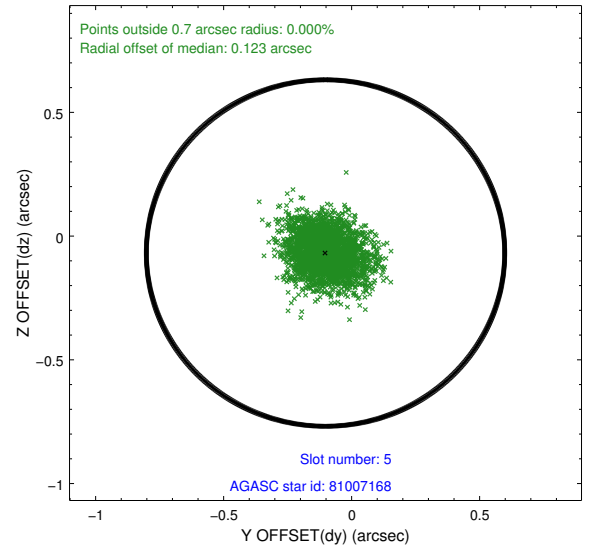
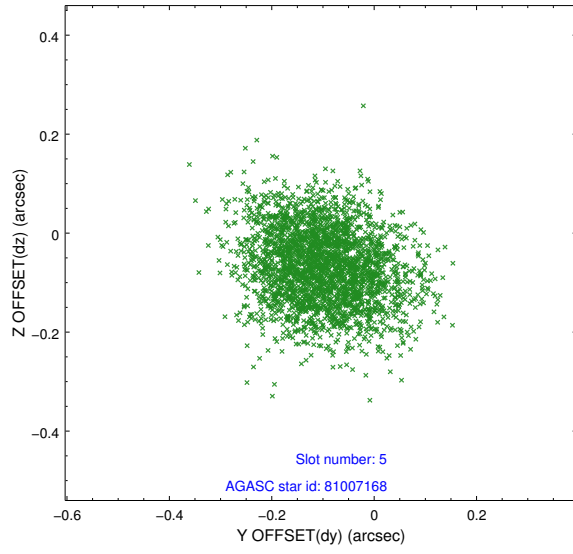
2.4.1 Slot 3



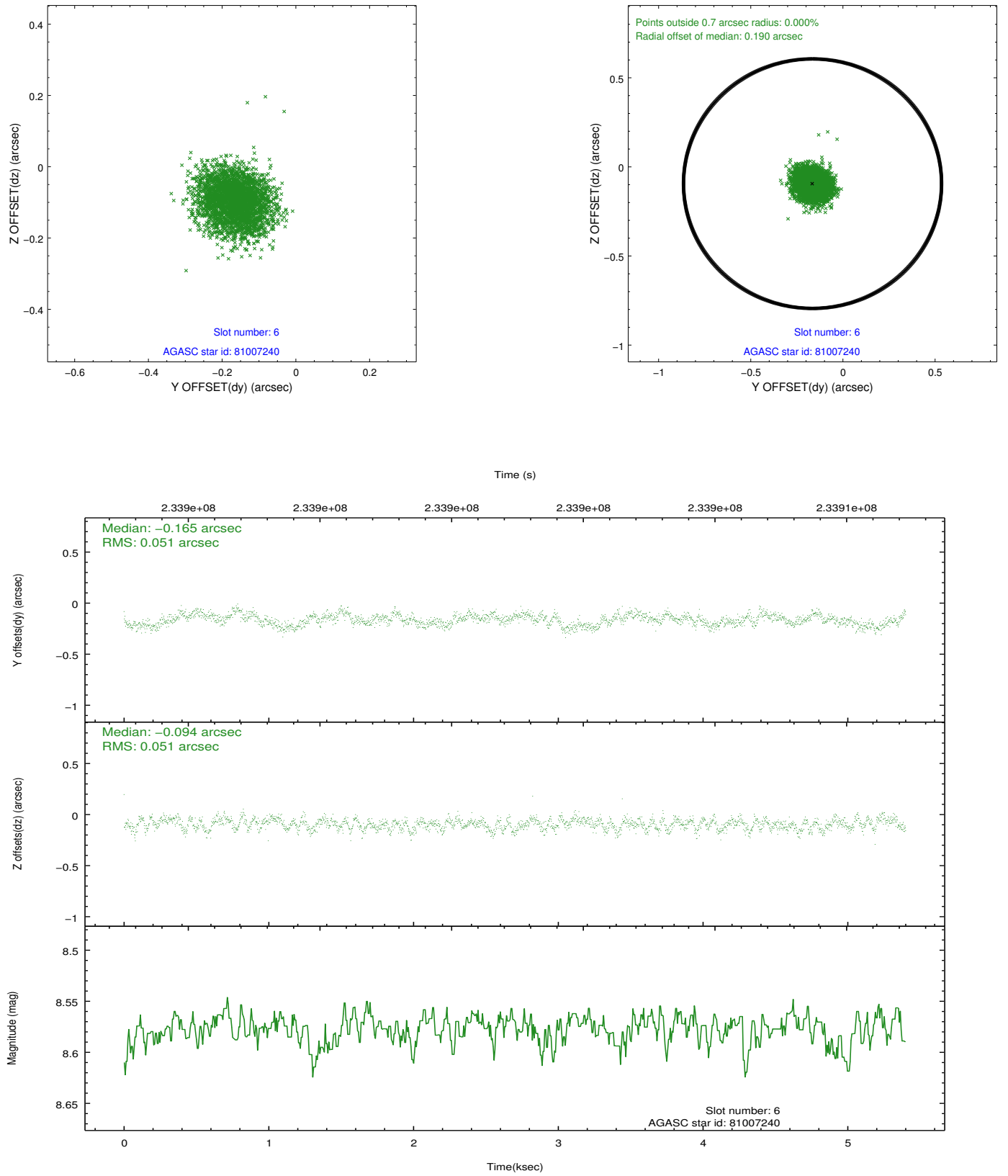
2.4.2 Slot 4



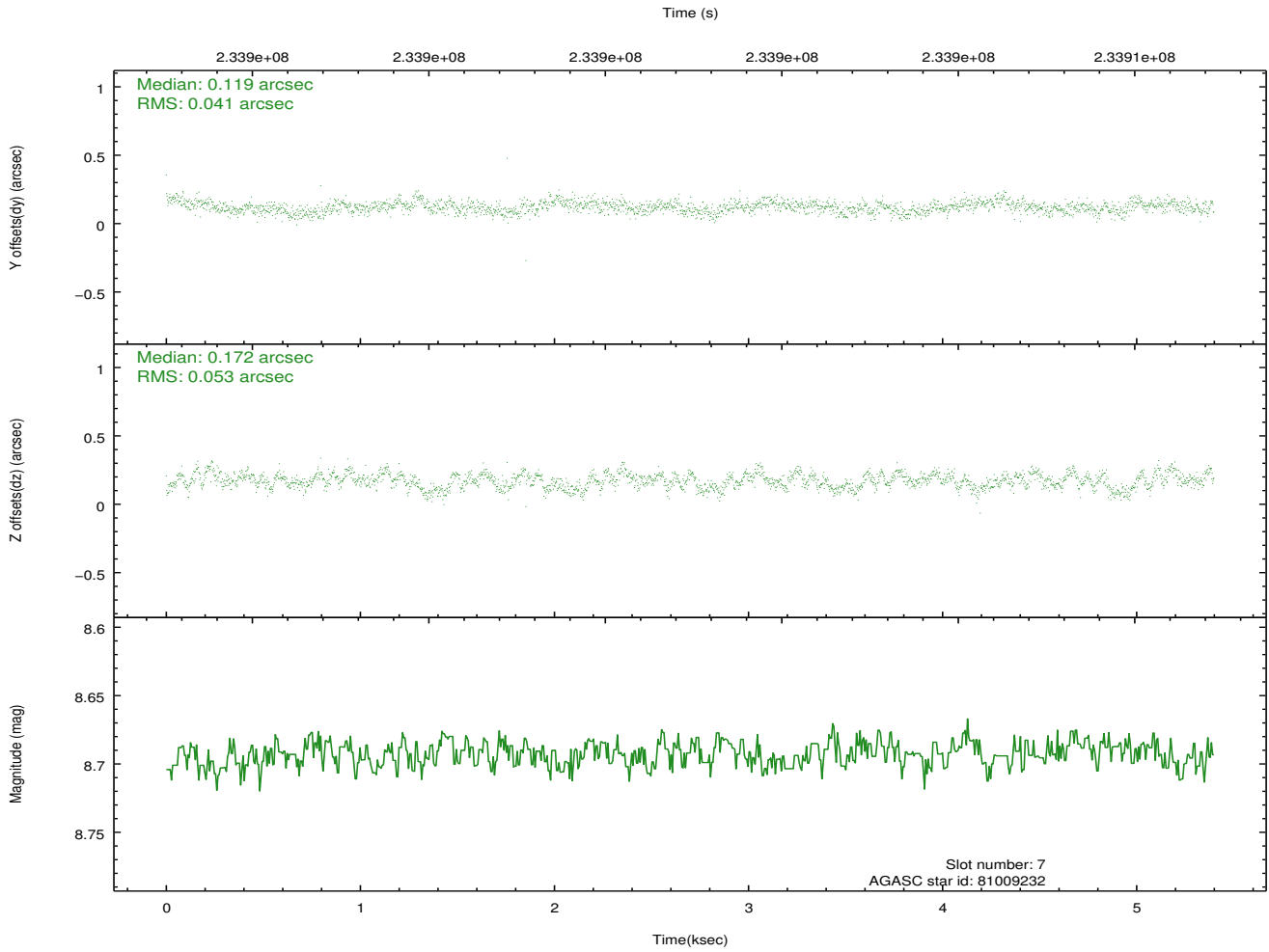
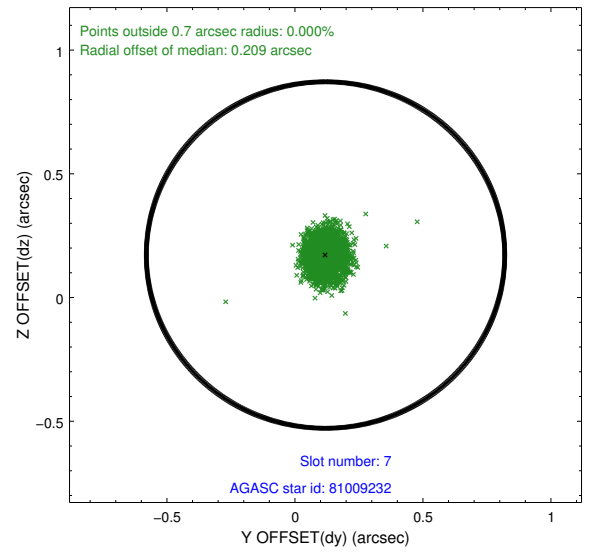
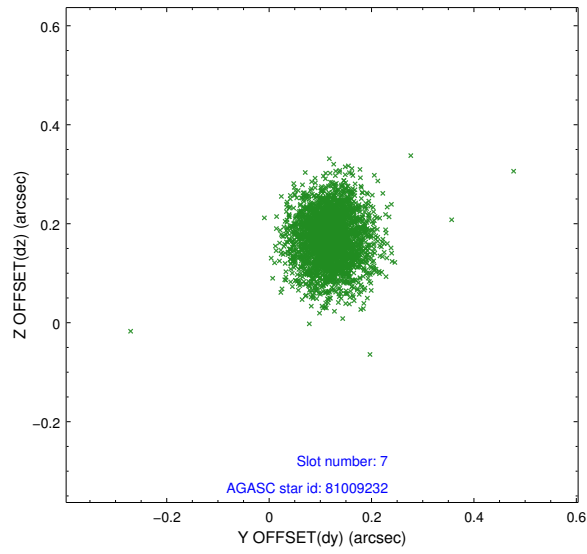
2.4.3 Slot 5



2.4.4 Slot 6

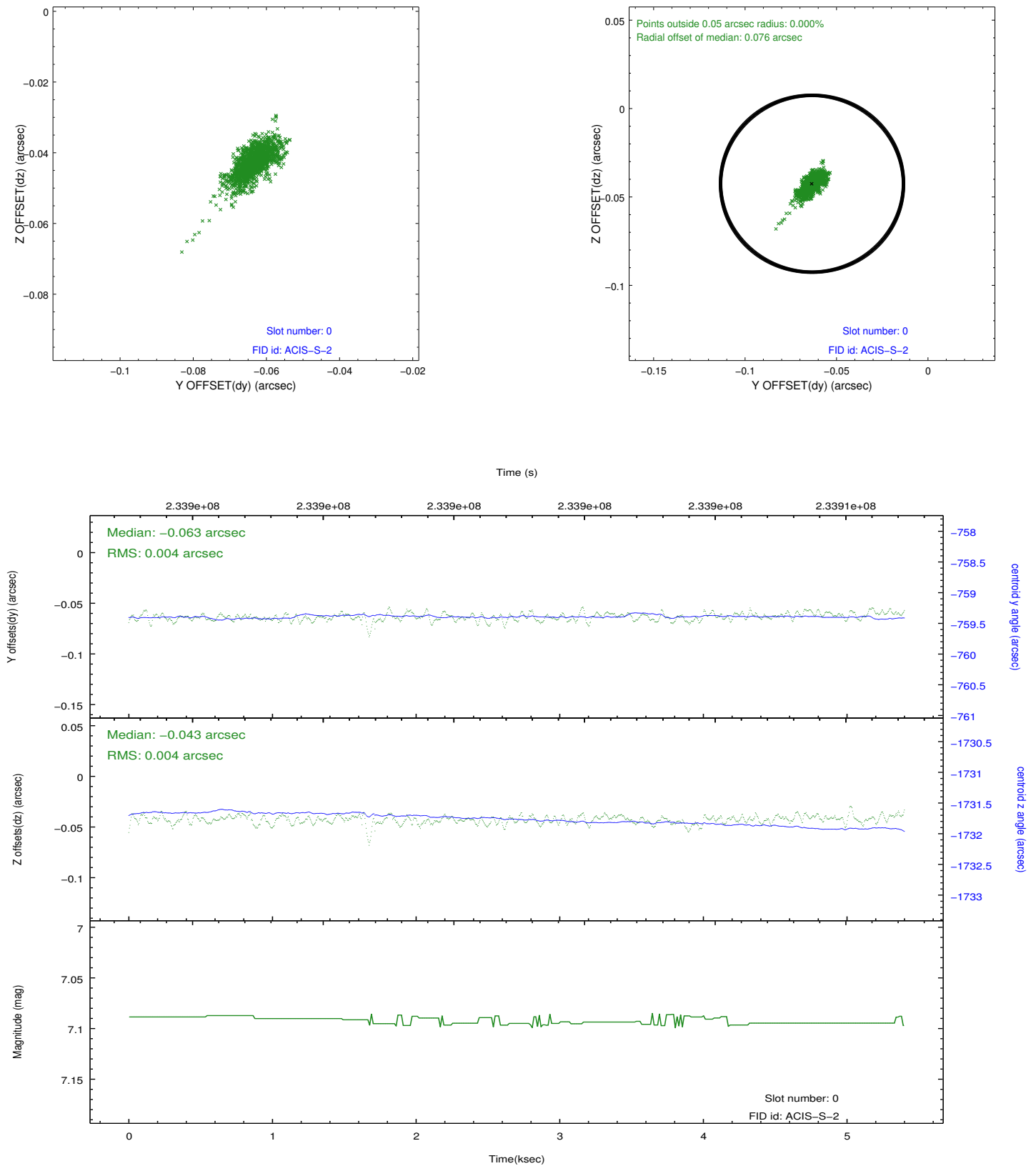


2.4.5 Slot 7

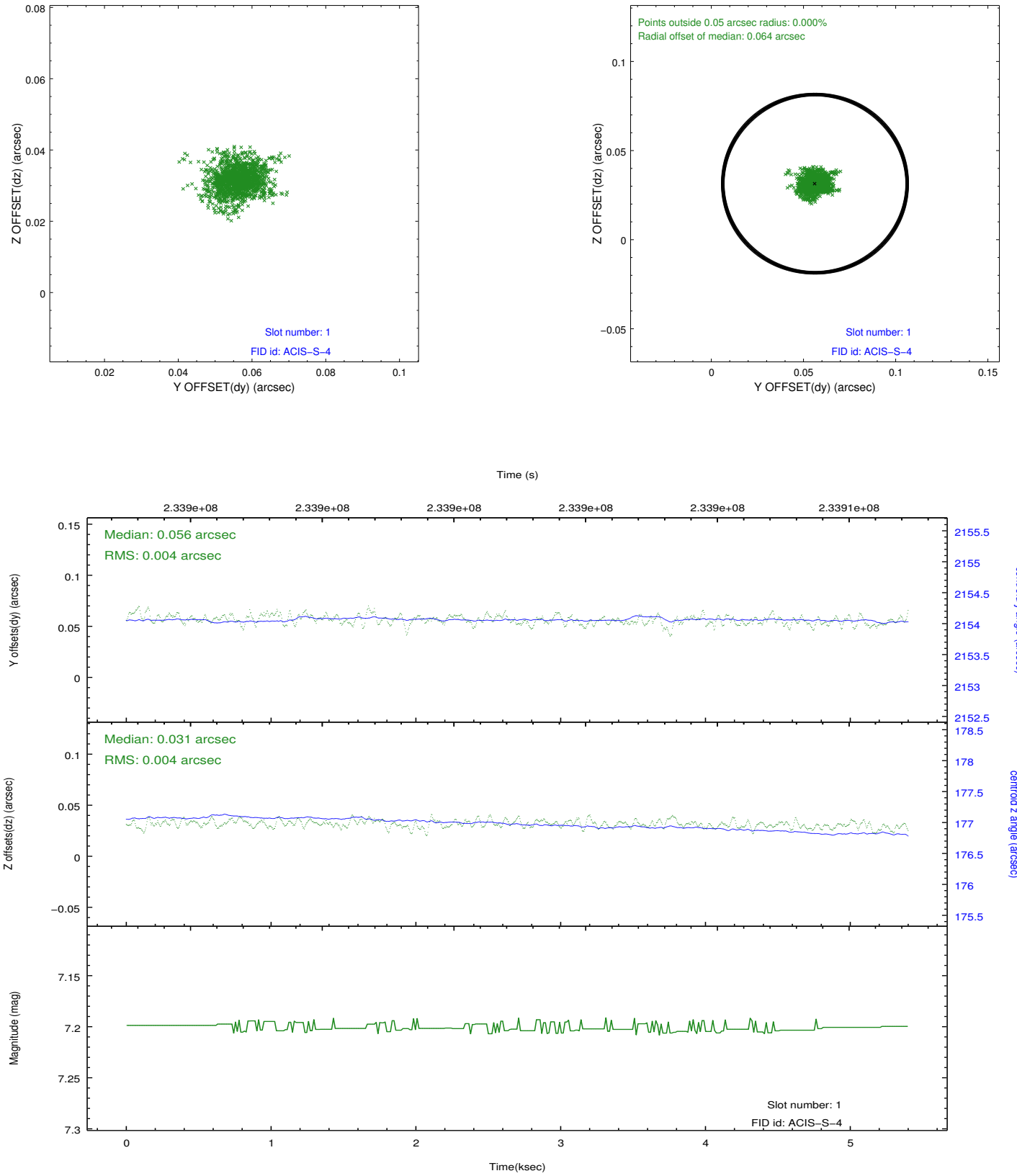


2.5 FID Slots

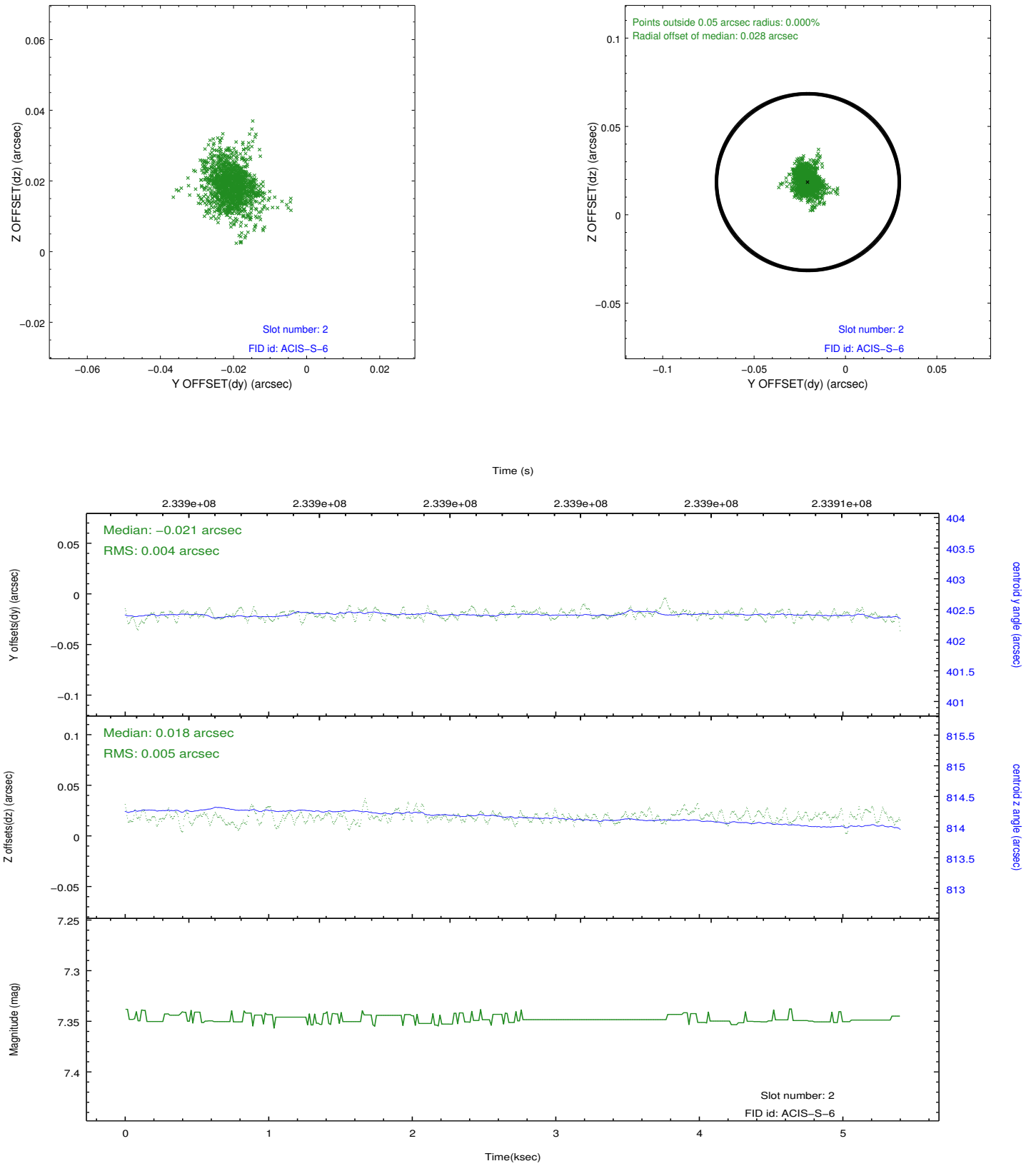
2.5.1 Slot 0



2.5.2 Slot 1



2.5.3 Slot 2



A Summary

A.1 Status

V&V Scientist	Jen Lauer
V&V Date (YYYY-MM-DD)	2013.01.16
V&V Edition	1
V&V Disposition and Status	OK
V&V Charge Time	5.0072

A.2 Comments