

# V&V Reference Report

## L2 ASCDS Version : 7.6.7.1

Observation 5658 - L2 Version 002  
Chandra X-Ray Center

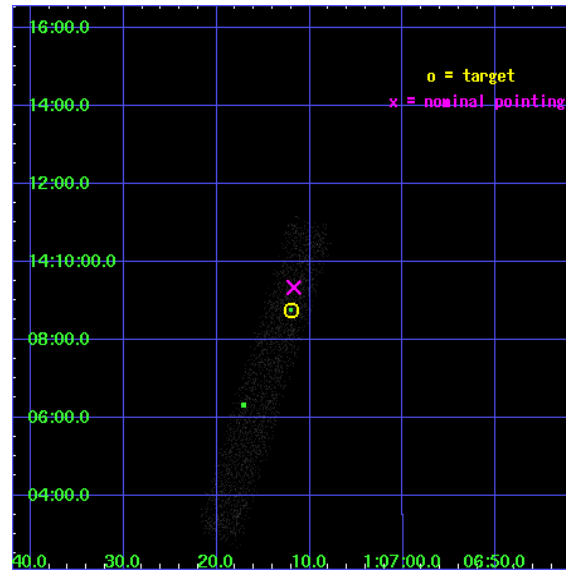
L2 Processing Date : Mar 8 2006

## Contents

<b>1</b>	<b>Front</b>	<b>2</b>
<b>2</b>	<b>OBI</b>	<b>3</b>
2.1	OBI . . . . .	3
2.1.1	Images . . . . .	3
2.1.2	Bias . . . . .	3
2.1.3	Parameters . . . . .	4
2.1.4	Events . . . . .	4
2.2	Compared Parameters . . . . .	5
2.3	Aspect . . . . .	6
2.4	Star Slots . . . . .	9
2.4.1	Slot 3 . . . . .	9
2.4.2	Slot 4 . . . . .	10
2.4.3	Slot 5 . . . . .	11
2.4.4	Slot 6 . . . . .	12
2.4.5	Slot 7 . . . . .	13
2.5	FID Slots . . . . .	14
2.5.1	Slot 0 . . . . .	14
2.5.2	Slot 1 . . . . .	15
2.5.3	Slot 2 . . . . .	16
<b>3</b>	<b>Point Sources</b>	<b>17</b>
<b>A</b>	<b>Summary</b>	<b>18</b>
A.1	Status . . . . .	18
A.2	Comments . . . . .	18

# 1 Front

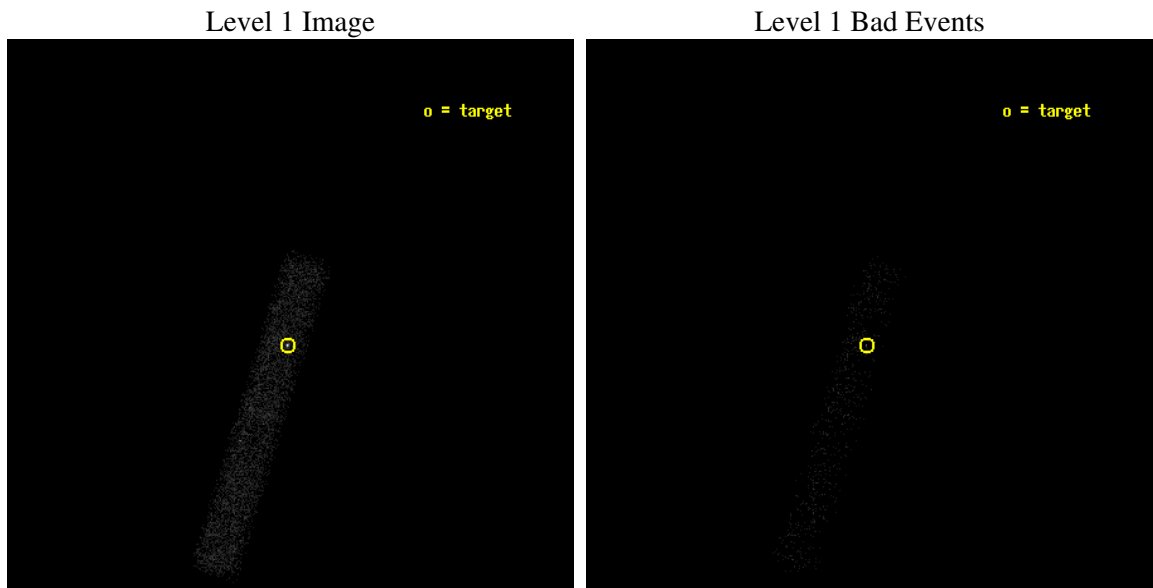
seq_num	701081
obs_id	5658
title	X-ray Properties of AGNs with Intermediate-mass Black Holes
observer	Dr. Luis Ho
object	SDSS J010712.03+140844.9
dtcycle	0
cycle	P
ra_targ	16.8
dec_targ	14.145806
ra_nom	16.798809314582
dec_nom	14.155515831749
roll_nom	107.03433972884
revision	2
ontime	5007.2000746131
livetime	4541.2661659832
ontime7	5007.2000746131
l2events	3948



## 2 OBI

### 2.1 OBI

#### 2.1.1 Images



#### 2.1.2 Bias

Chip 7



### 2.1.3 Parameters

obi_num	0
ascdsver	7.6.7.1
caldbver	3.2.1
date	2006-03-08T15:13:18
revision	2

sched_exp_time	5000.000000
ontime	5008.3865783811
ontime7	5008.3865783811
l1events	7877

### 2.1.4 Events

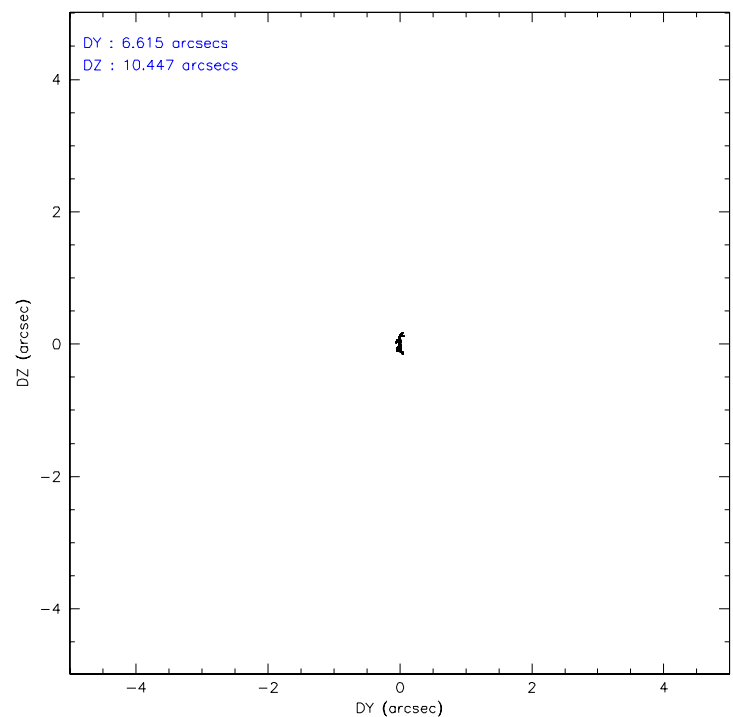
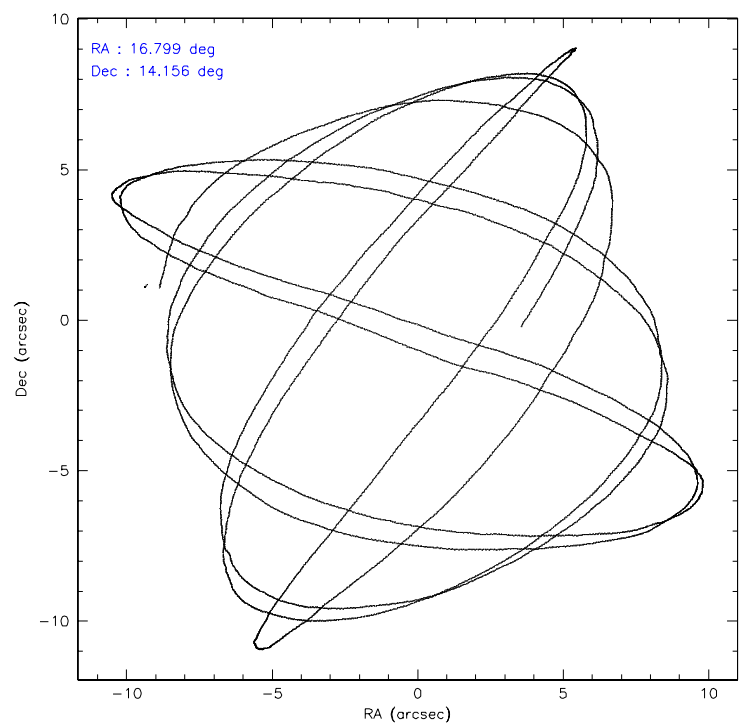
	<b>ccd 7</b>
level 1 events	7877
rejected events	3795
rejected %	48%

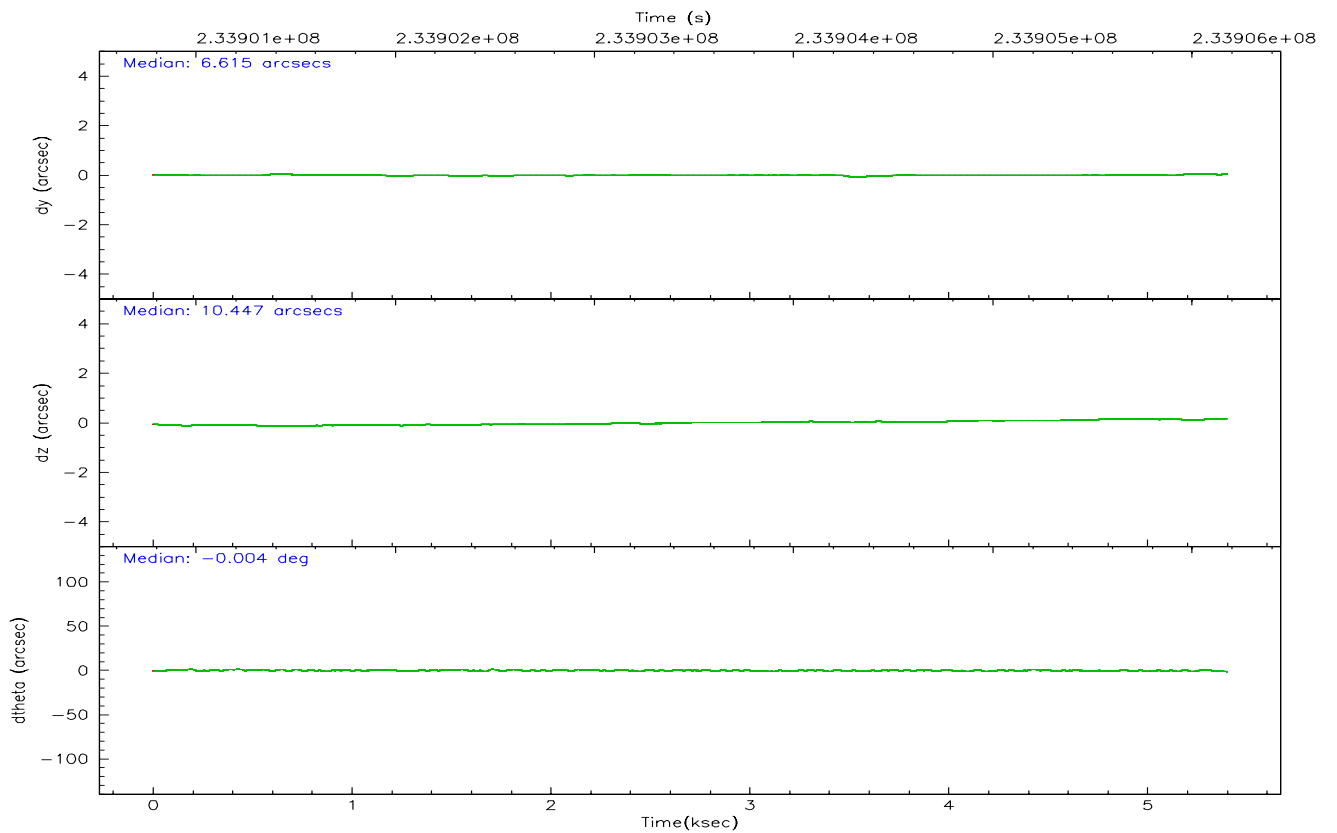
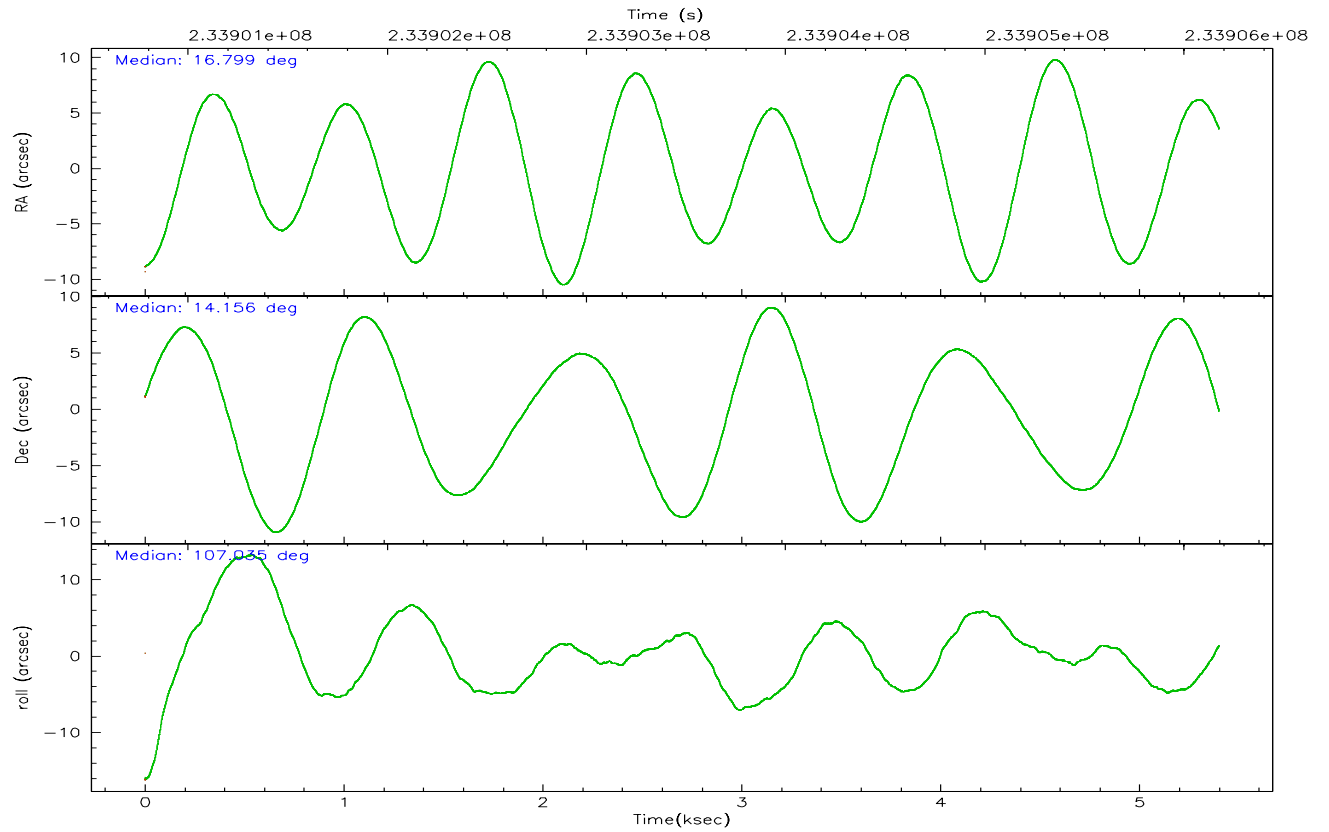
	<b>ccd 7</b>
grade 0 events	683
	8%
grade 1 events	7
	0%
grade 2 events	929
	11%
grade 3 events	449
	5%
grade 4 events	397
	5%
grade 5 events	461
	5%
grade 6 events	1624
	20%
grade 7 events	3327
	42%

## 2.2 Compared Parameters

Parameter	Planned	Actual	Parameter	Planned	Actual
Instrument	ACIS	ACIS	Obspar format version number	6	6
Detector	ACIS-7	ACIS-7	Obspar file type	PREDICTED	ACTUAL
Grating	NONE	NONE	Obspar update status	NONE	UPDATED
Data mode	FAINT	FAINT	On-chip summing requested	N	N
Observation mode	POINTING	POINTING	Subarray requested	1/8	1/8
Pointing RA	16.819597	16.7988093145816	Subarray start row	0	449
Pointing Dec	14.137114	14.15551583174934	Subarray row count	1024	128
Pointing Roll	106.872650	107.0343397288426	Alternating exposures requested	N	N
SIM focus pos (mm)	-0.684267	-0.6828225247311905	Primary exposure time	0.000000	0.4
SIM defocus (mm)	0	0.001444936568705701			
SIM translation stage pos (mm)	-190.132523	-190.1400660498719			
SIM translation stage offset (mm)	0	0.00754346686406393			
Observation start time	233901184.184000	233900487.3504			
Observation start date	2005-05-31T04:32:00	2005-05-31T04:21:27			
Observation end time	233906184.184000	233907153.9507			
Observation end date	2005-05-31T05:55:20	2005-05-31T06:12:33			
Read mode	TIMED	TIMED			

## 2.3 Aspect





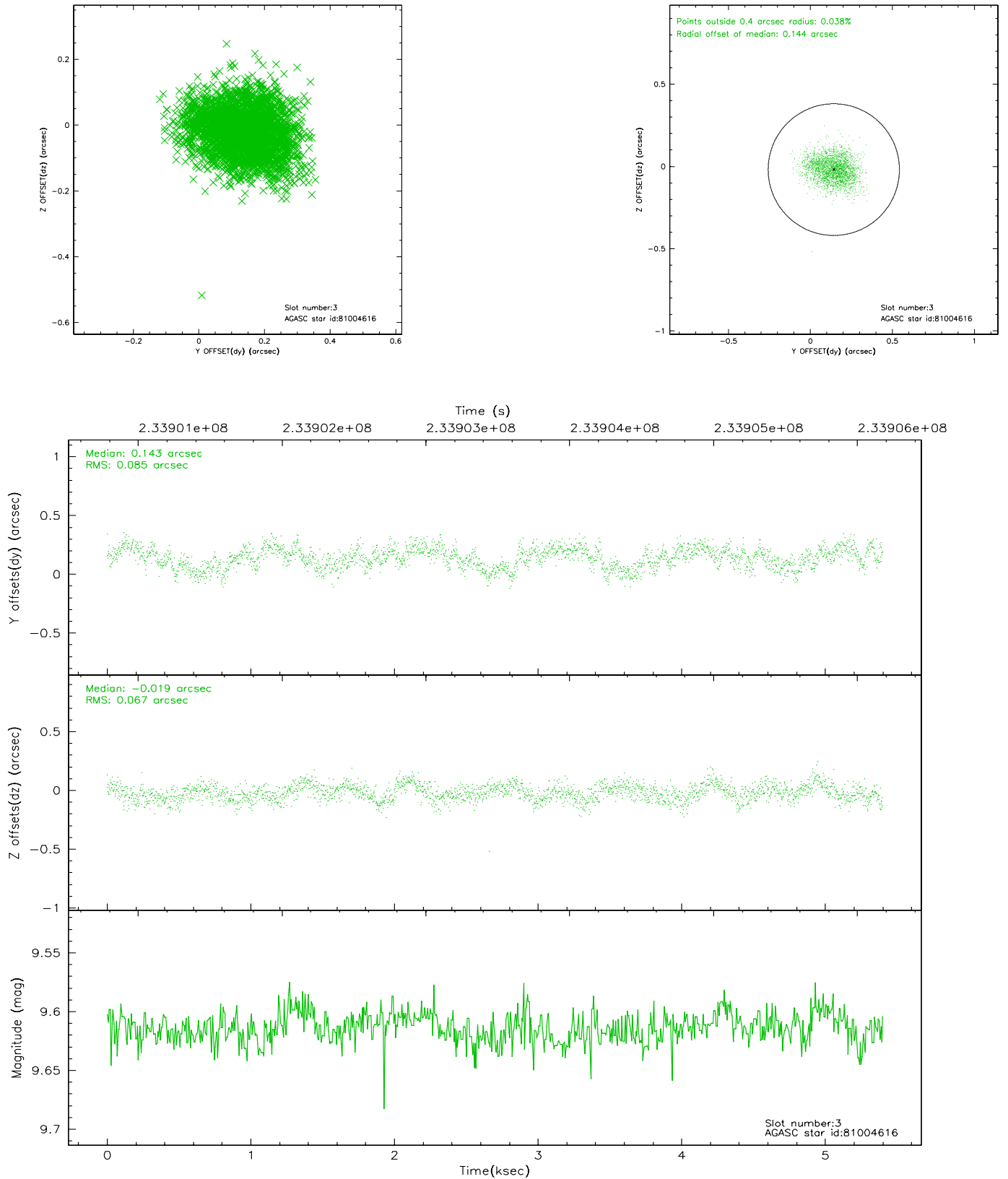
### Slot Statistics

slot	status	id	mag	n_pts	med_dy	med_dz	dr1	dr2	ra	dec	mean_y	mean_z
0	FID	ACIS-S-2	7.09	1318	-0.038	-0.016	0.005	0.010	0.000000	0.000000	-759.38	-1731.73
1	FID	ACIS-S-4	7.20	1318	0.028	0.024	0.005	0.009	0.000000	0.000000	2153.44	175.66
2	FID	ACIS-S-6	7.35	1318	-0.017	-0.001	0.006	0.011	0.000000	0.000000	404.04	814.29
3	GUIDE	81004616	9.61	2627	0.143	-0.019	0.116	0.185	16.727653	13.590154	-1791.23	880.03
4	GUIDE	81005408	7.43	2635	0.009	0.015	0.063	0.103	16.652176	13.884607	-701.20	824.16
5	GUIDE	81007168	9.80	2622	-0.102	-0.069	0.118	0.193	16.177367	14.233739	985.57	2043.40
6	GUIDE	81007240	8.58	2630	-0.165	-0.094	0.078	0.122	16.347652	14.108108	379.77	1607.65
7	GUIDE	81009232	8.69	2630	0.119	0.172	0.070	0.113	17.046481	13.691825	-1764.10	-293.15

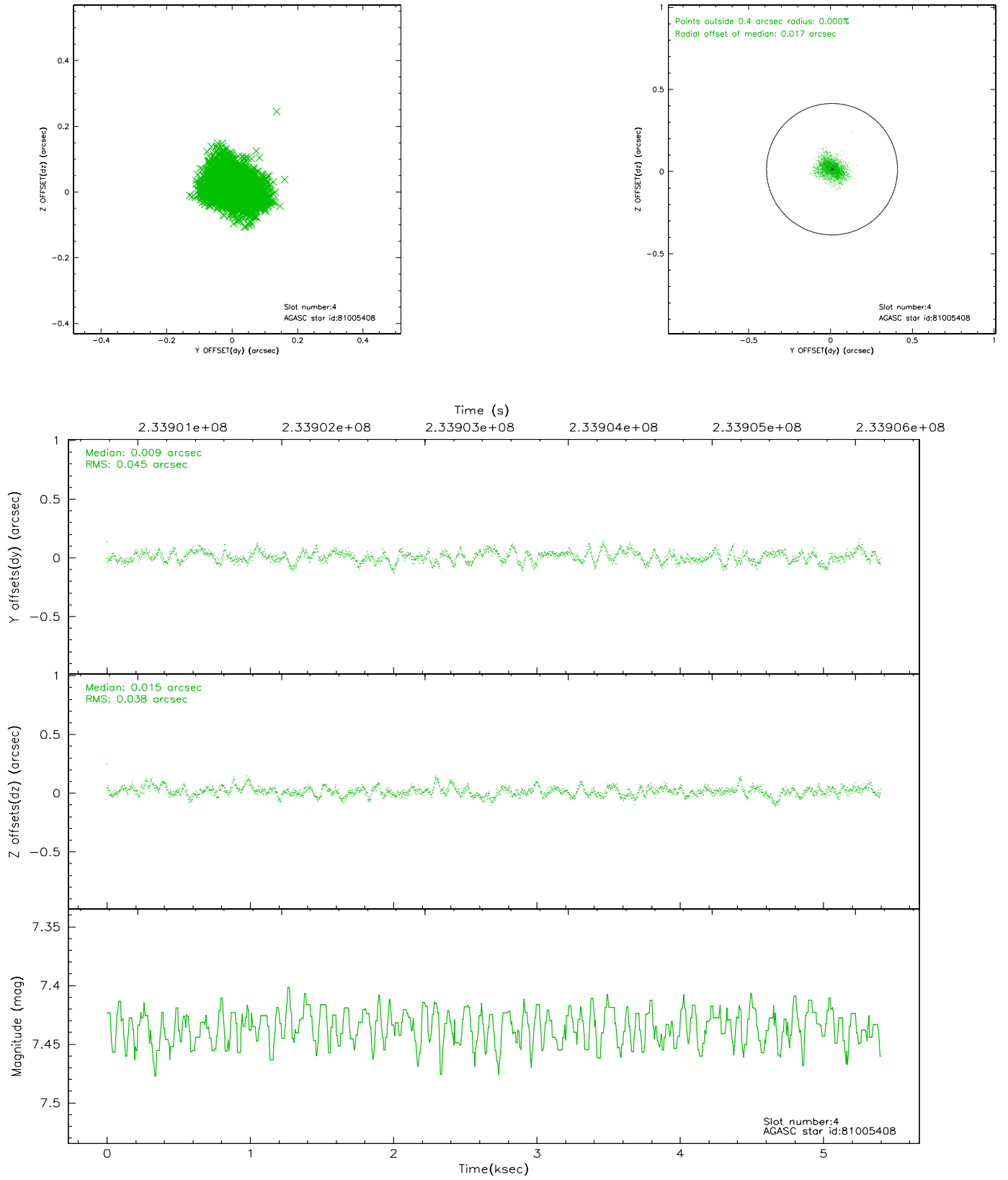


## 2.4 Star Slots

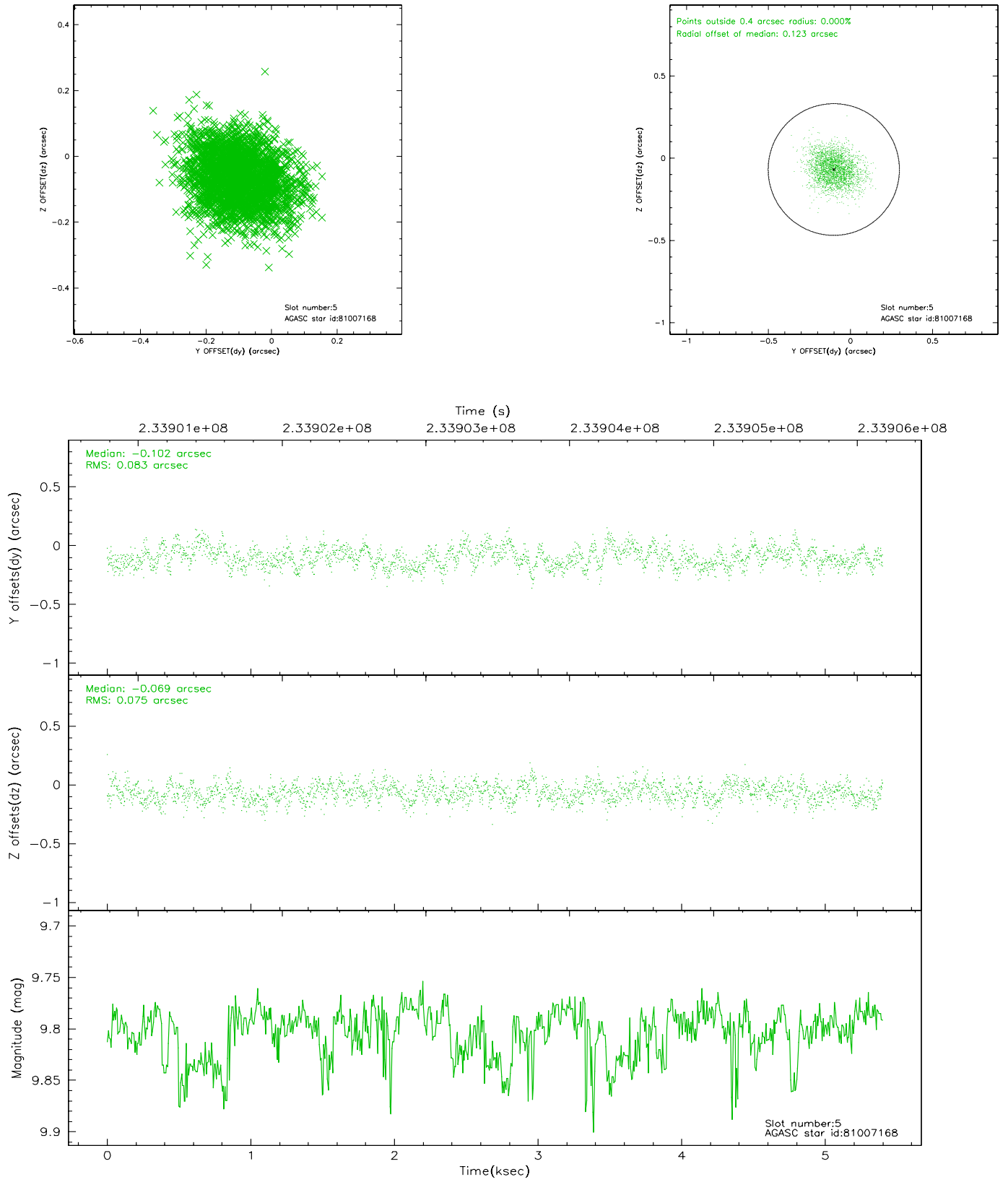
### 2.4.1 Slot 3



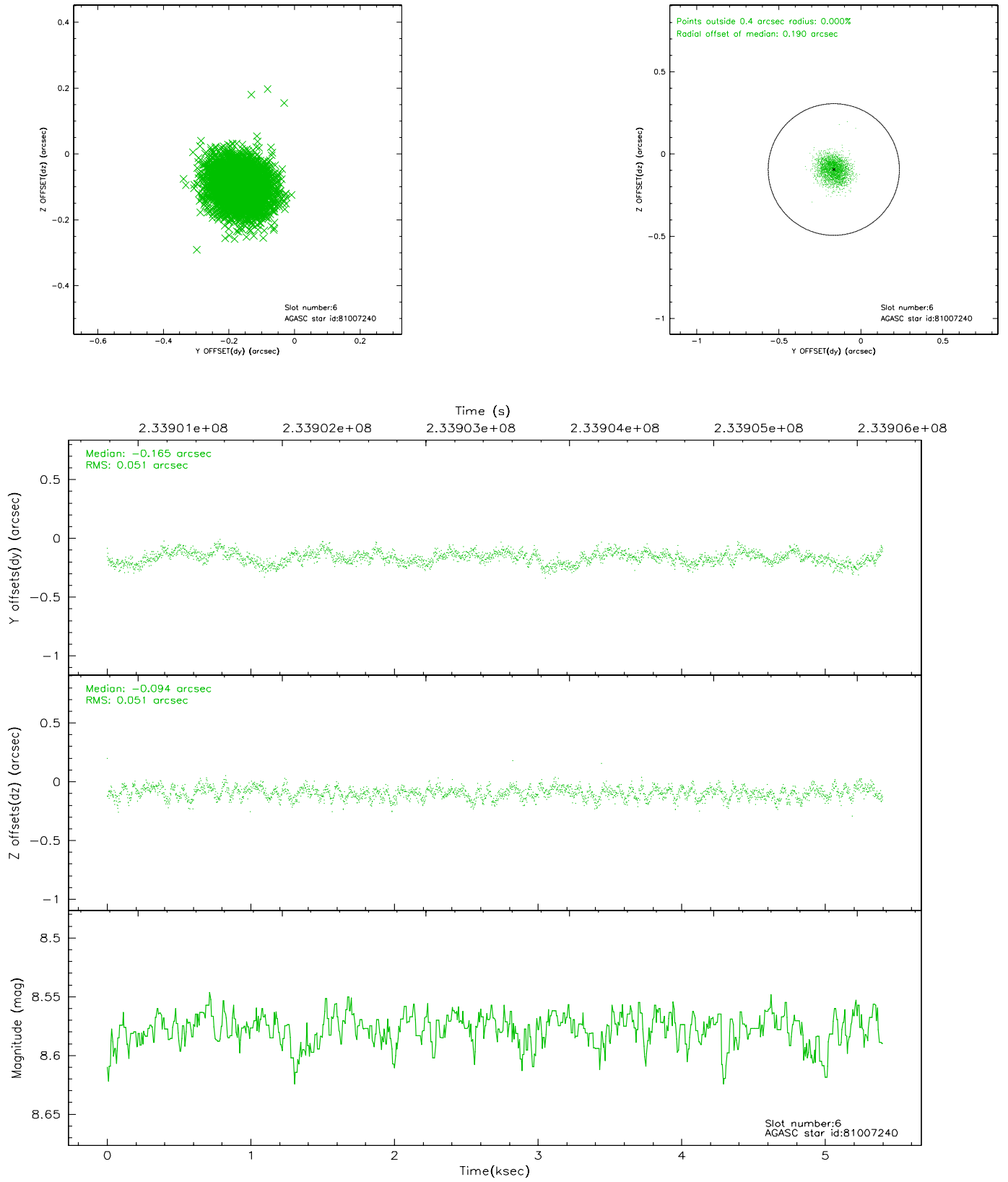
## 2.4.2 Slot 4



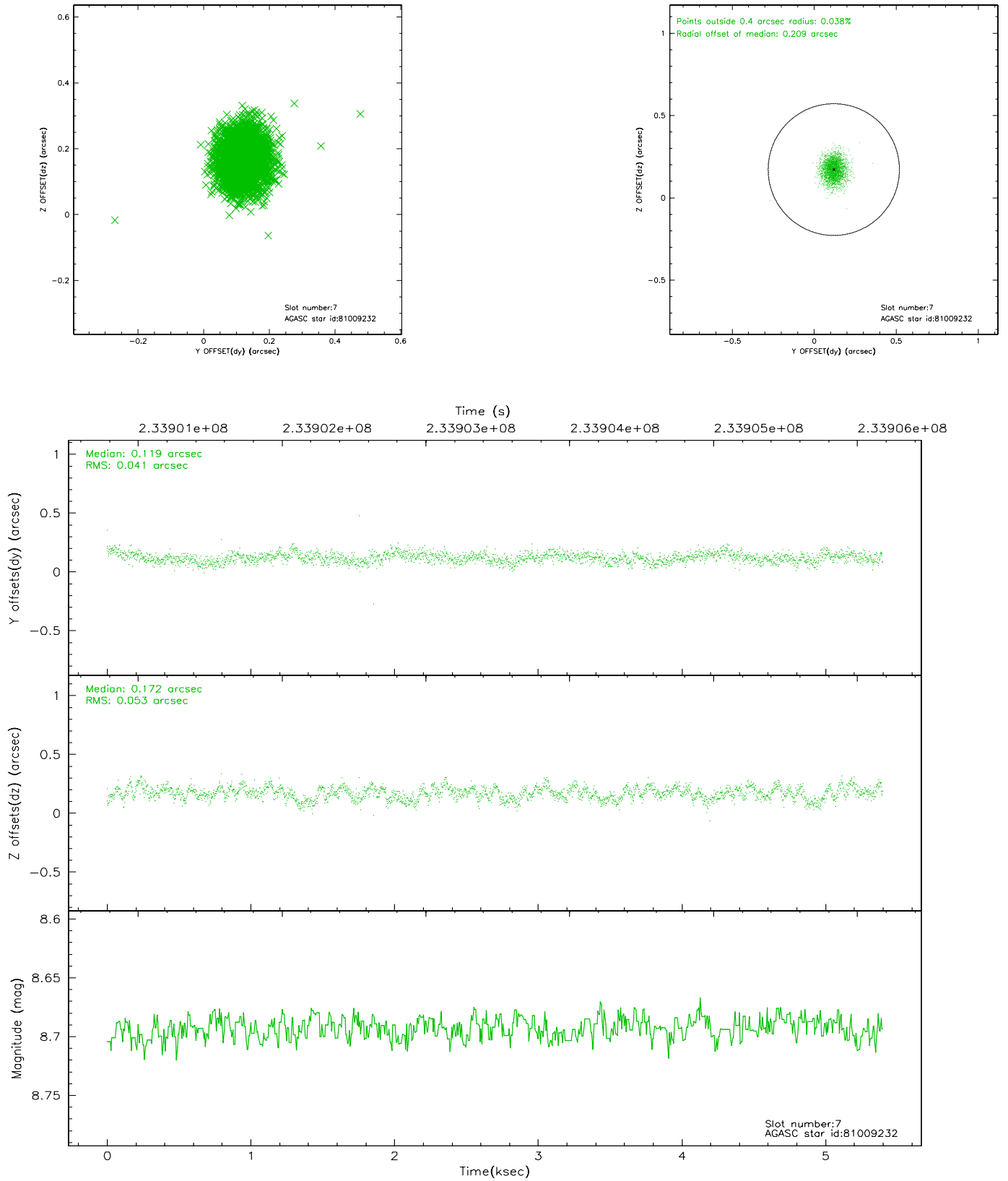
### 2.4.3 Slot 5



## 2.4.4 Slot 6

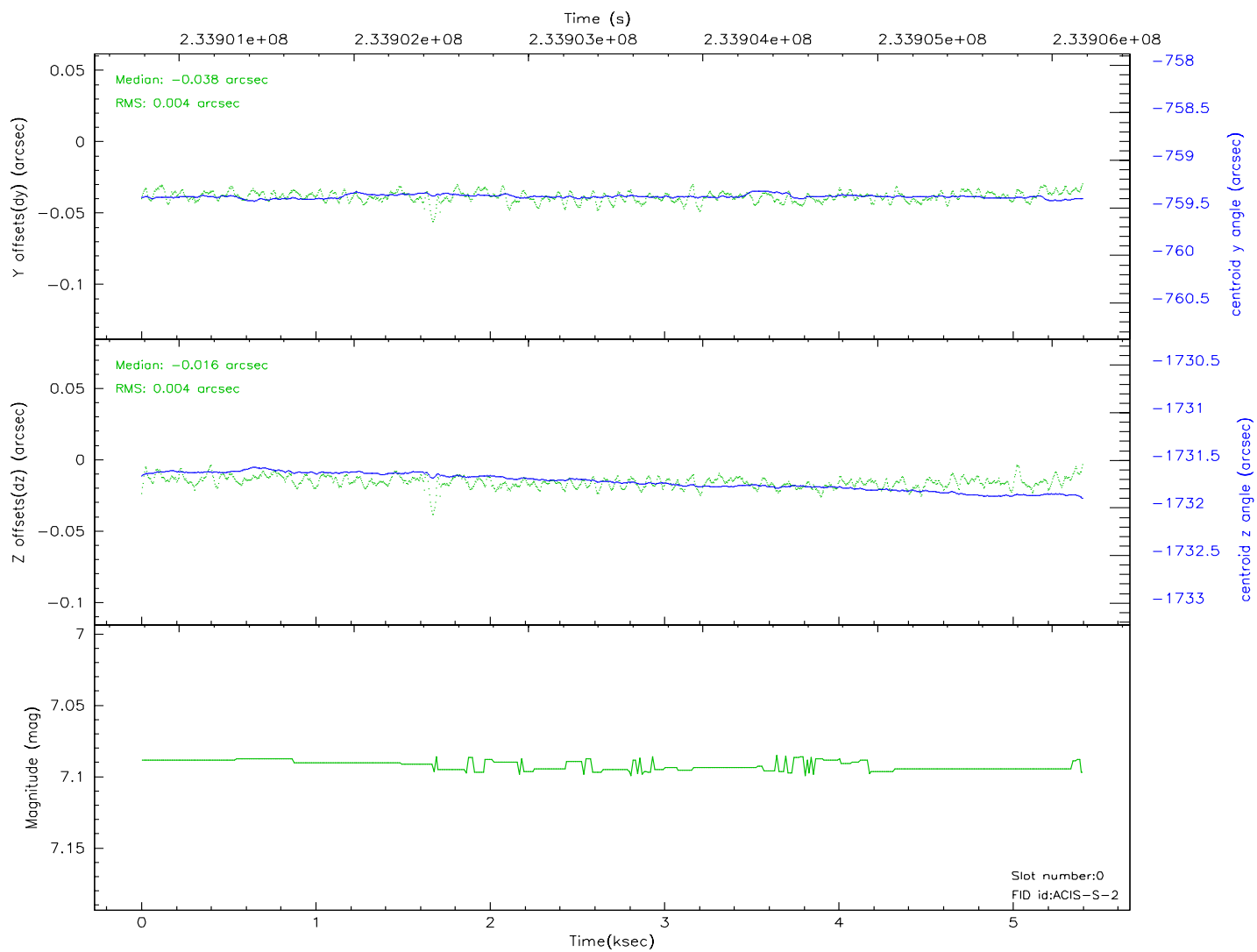
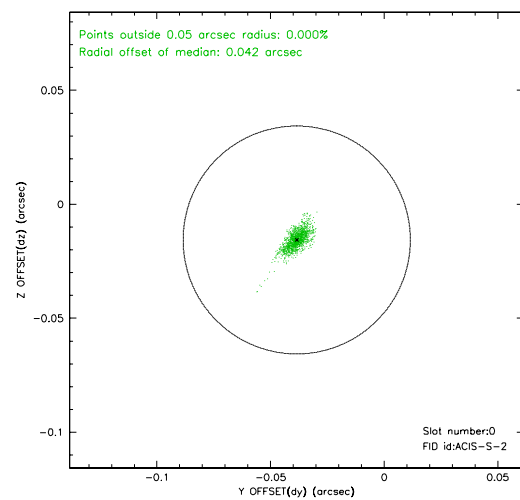
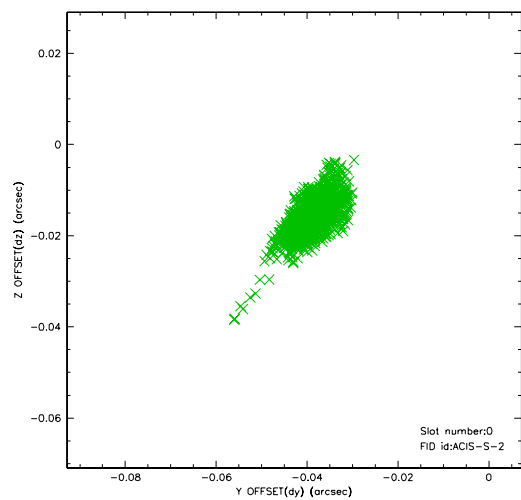


## 2.4.5 Slot 7

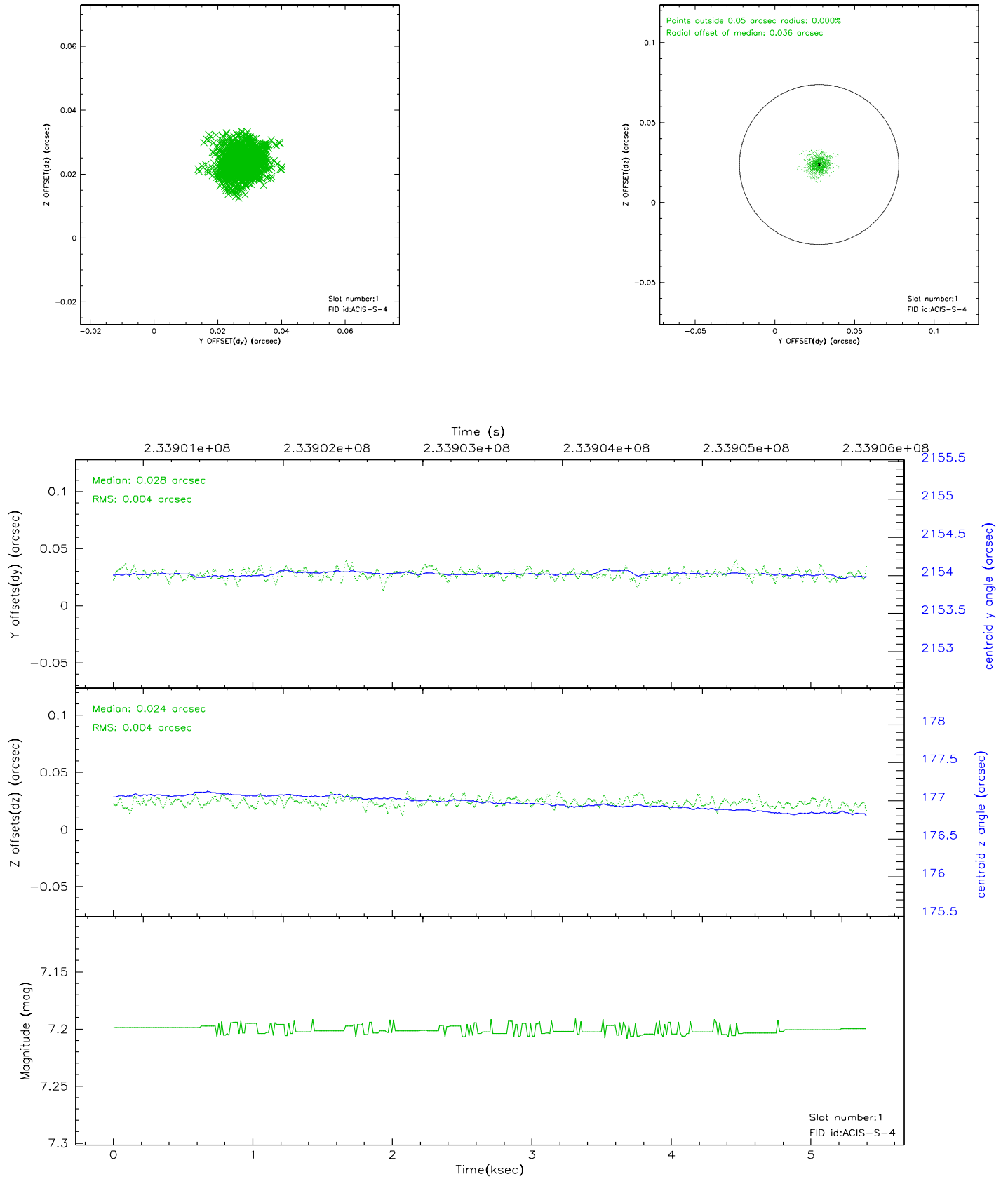


## 2.5 FID Slots

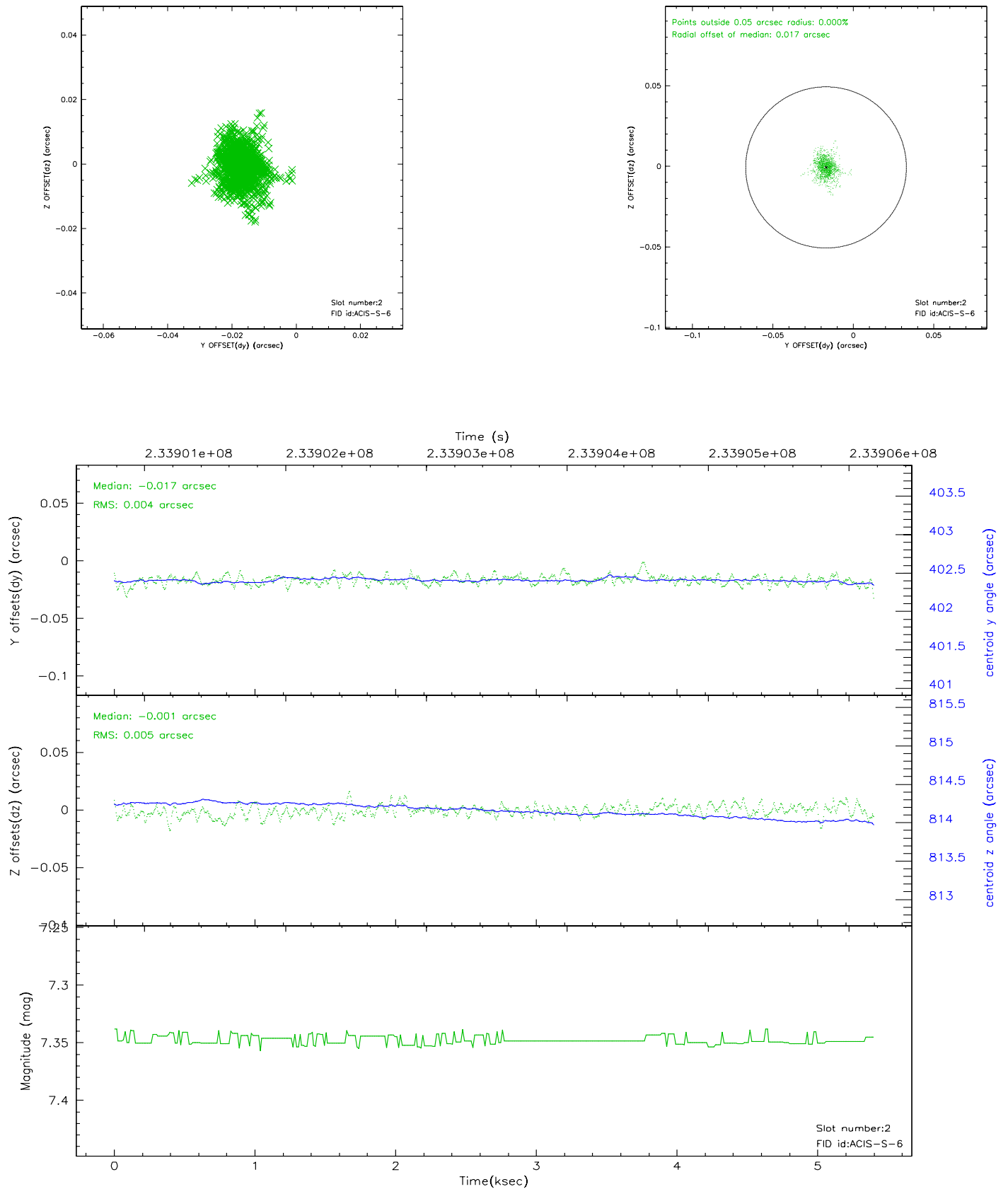
### 2.5.1 Slot 0



## 2.5.2 Slot 1



### 2.5.3 Slot 2





### 3 Point Sources

3.29 arcmin



## A Summary

### A.1 Status

V&V Scientist	Jen Lauer
V&V Date (YYYY-MM-DD)	2006.03.08
V&V Edition	1
V&V Disposition and Status	OK
V&V Charge Time	5.0072

### A.2 Comments