

# V&V Reference Report

## L2 ASCDS Version : 7.6.7

Observation 5657 - L2 Version 002  
Chandra X-Ray Center

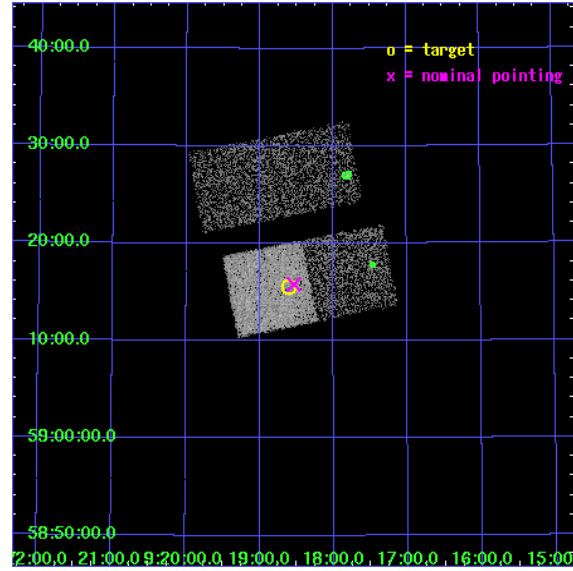
L2 Processing Date: Feb 19 2006

## Contents

<b>1</b>	<b>Front</b>	<b>2</b>
<b>2</b>	<b>OBI</b>	<b>3</b>
2.1	OBI . . . . .	3
2.1.1	Images . . . . .	3
2.1.2	Bias . . . . .	3
2.1.3	Parameters . . . . .	4
2.1.4	Events . . . . .	4
2.2	Compared Parameters . . . . .	5
2.3	Aspect . . . . .	6
2.4	Star Slots . . . . .	9
2.4.1	Slot 3 . . . . .	9
2.4.2	Slot 4 . . . . .	10
2.4.3	Slot 5 . . . . .	11
2.4.4	Slot 6 . . . . .	12
2.4.5	Slot 7 . . . . .	13
2.5	FID Slots . . . . .	14
2.5.1	Slot 0 . . . . .	14
2.5.2	Slot 1 . . . . .	15
2.5.3	Slot 2 . . . . .	16
<b>3</b>	<b>Point Sources</b>	<b>17</b>
<b>A</b>	<b>Summary</b>	<b>18</b>
A.1	Status . . . . .	18
A.2	Comments . . . . .	18

# 1 Front

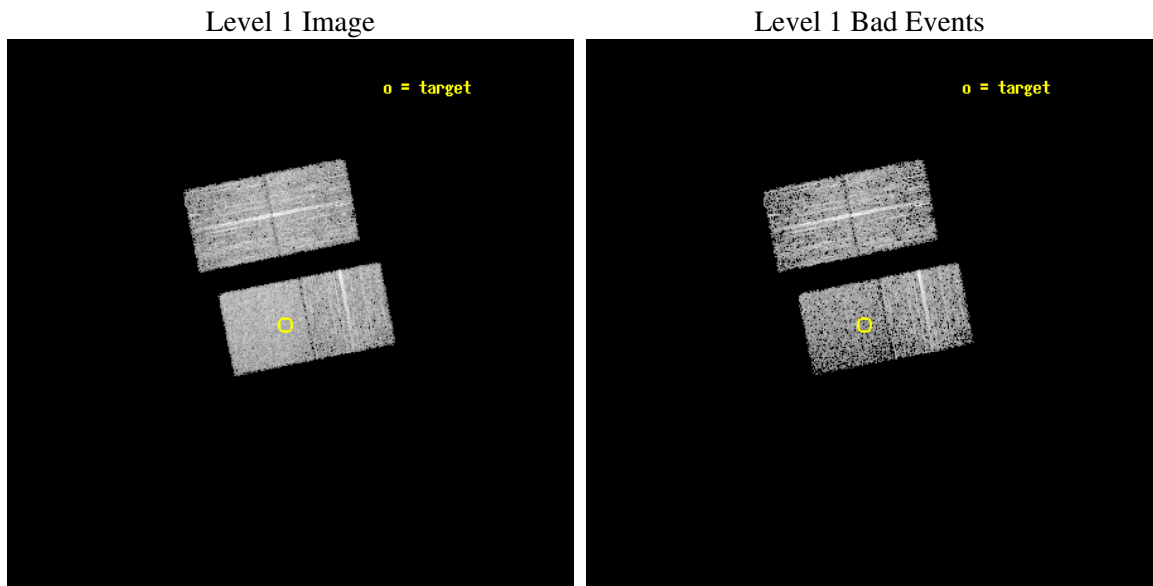
seq_num	701080
obs_id	5657
title	The Spectral Energy Distribution and Fe II Emission in Intermediate-Redshift Narrow-line Seyfert 1 Galaxies
observer	PROF. KAREN LEIGHLY
object	SDSS J091836.46+591535.4
dtcycle	0
cycle	P
ra_targ	139.652083
dec_targ	59.259833
ra_nom	139.63447415661
dec_nom	59.263306973986
roll_nom	168.7999586001
revision	2
ontime	4972.3999904394
livetime	4907.4319239367
ontime2	4969.2590202093
ontime3	4972.3999904394
ontime6	4972.3999904394
ontime7	4972.3999904394
l2events	21423



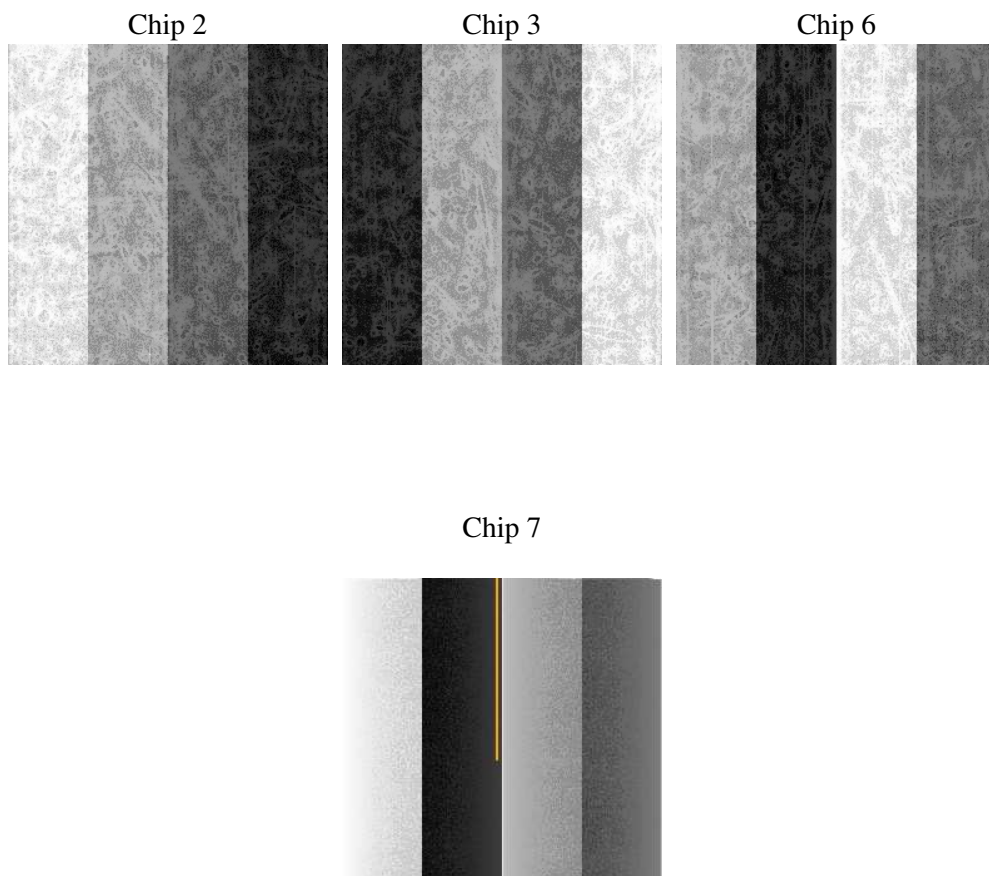
## 2 OBI

### 2.1 OBI

#### 2.1.1 Images



#### 2.1.2 Bias



### 2.1.3 Parameters

obi_num	1
ascdsver	7.6.7
caldbver	3.2.1
date	2006-02-19T19:36:23
revision	2

sched_exp_time	4800.000000
ontime	5245.4765974581
ontime2	5242.335627228
ontime3	5245.4765974581
ontime6	5245.4765974581
ontime7	5245.4765974581
l1events	132313

### 2.1.4 Events

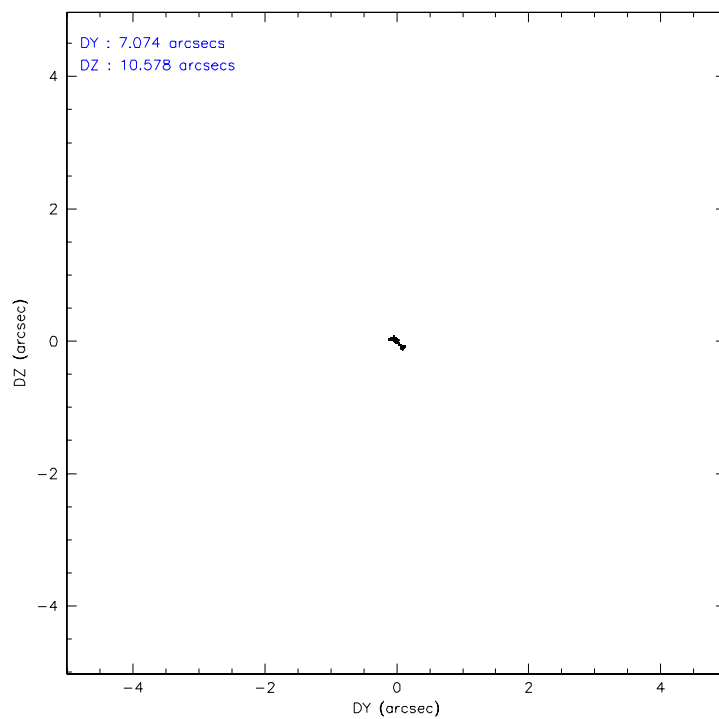
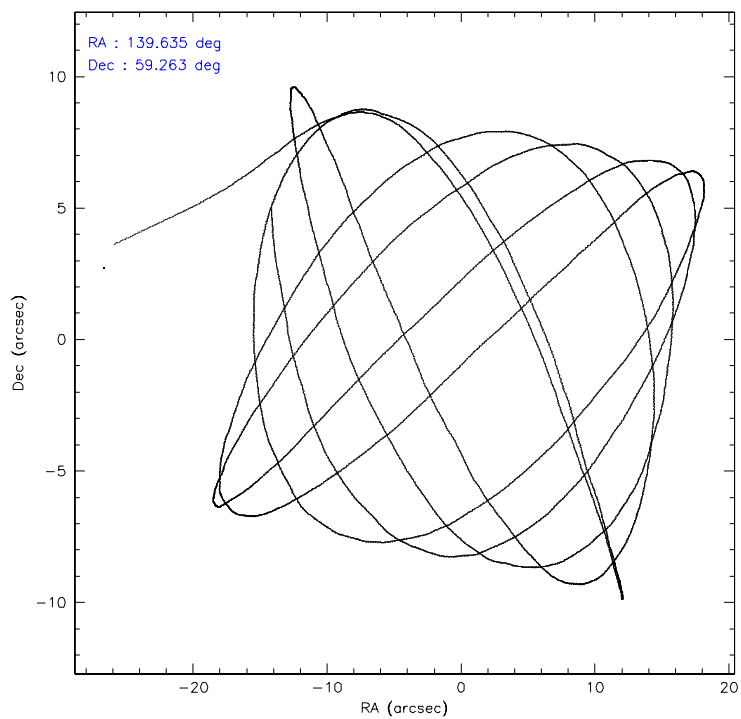
	ccd 2	ccd 3	ccd 6	ccd 7
level 1 events	33850	32323	31530	34610
rejected events	30864	29530	28197	20641
rejected %	91%	91%	89%	59%

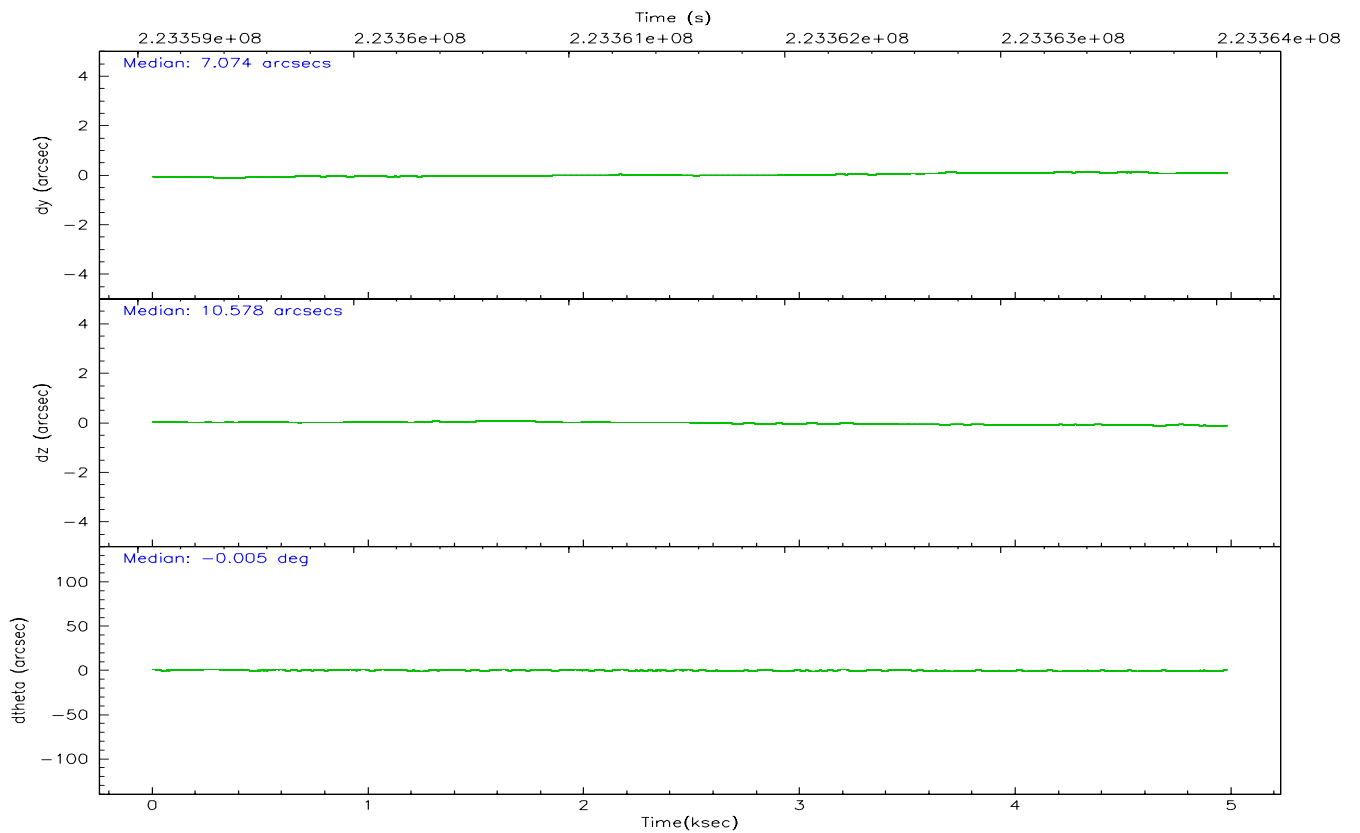
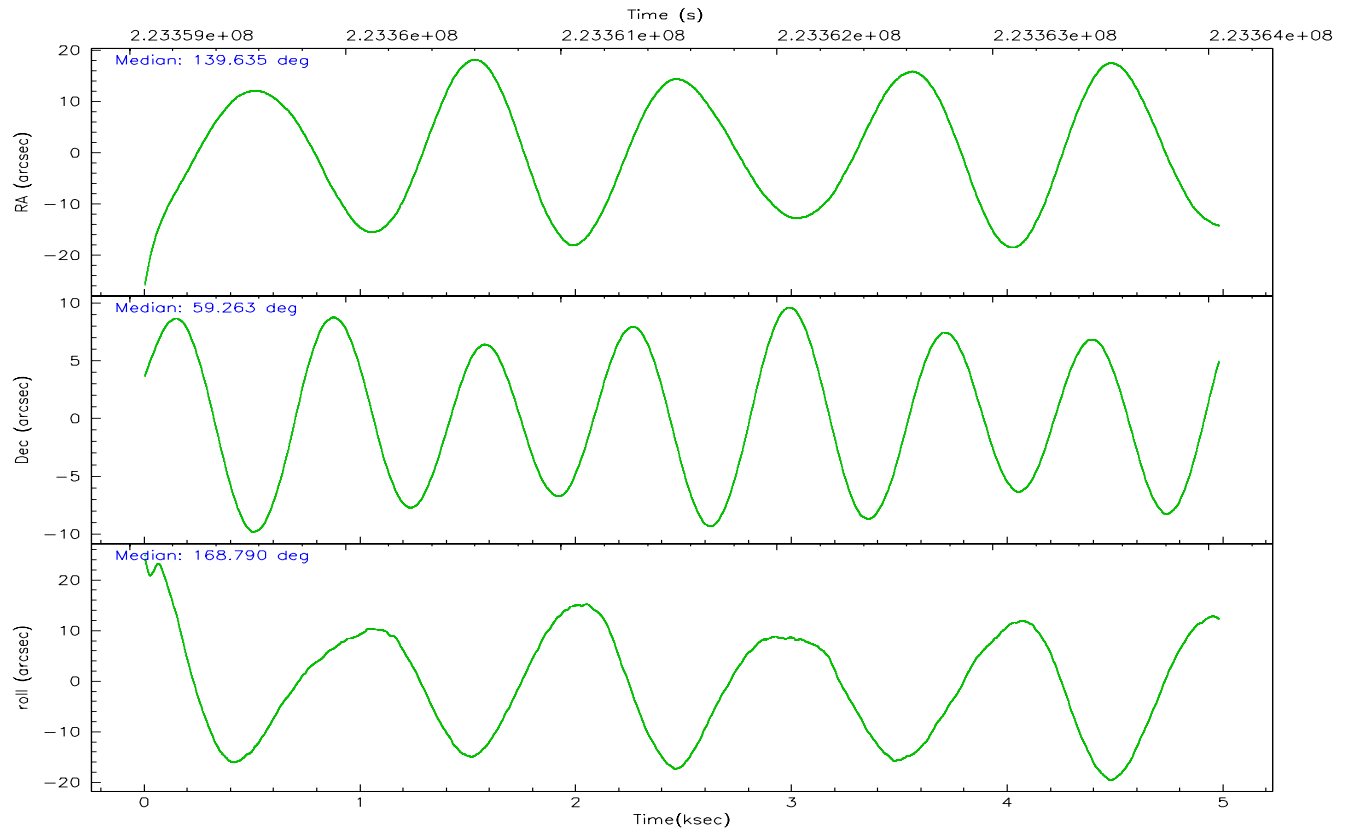
	ccd 2	ccd 3	ccd 6	ccd 7
grade 0 events	1166	1057	1246	900
	3%	3%	3%	2%
grade 1 events	14	16	21	15
	0%	0%	0%	0%
grade 2 events	788	628	732	3670
	2%	1%	2%	10%
grade 3 events	316	360	405	875
	0%	1%	1%	2%
grade 4 events	342	351	385	850
	1%	1%	1%	2%
grade 5 events	1025	1266	1255	2719
	3%	3%	3%	7%
grade 6 events	557	564	744	8430
	1%	1%	2%	24%
grade 7 events	29642	28081	26742	17151
	87%	86%	84%	49%

## 2.2 Compared Parameters

Parameter	Planned	Actual	Parameter	Planned	Actual
Instrument	ACIS	ACIS	Obspar format version number	6	6
Detector	ACIS-2367	ACIS-2367	Obspar file type	PREDICTED	ACTUAL
Grating	NONE	NONE	Obspar update status	NONE	UPDATED
Data mode	VFAINT	VFAINT	On-chip summing requested	N	N
Observation mode	POINTING	POINTING	Subarray requested	NONE	NONE
Pointing RA	139.684669	139.6344741566149	Alternating exposures requested	N	N
Pointing Dec	59.272474	59.26330697398636	Primary exposure time	0.000000	3.1
Pointing Roll	168.600209	168.7999586000967			
SIM focus pos (mm)	-0.684267	-0.6828225247311905			
SIM defocus (mm)	0	0.001444936568705701			
SIM translation stage pos (mm)	-190.132523	-190.1400660498719			
SIM translation stage offset (mm)	0	0.00754346686406393			
Observation start time	223359255.184000	223358183.00926			
Observation start date	2005-01-29T04:13:11	2005-01-29T03:56:23			
Observation end time	223364055.184000	223364440.63455			
Observation end date	2005-01-29T05:33:11	2005-01-29T05:40:40			
Read mode	TIMED	TIMED			

## 2.3 Aspect





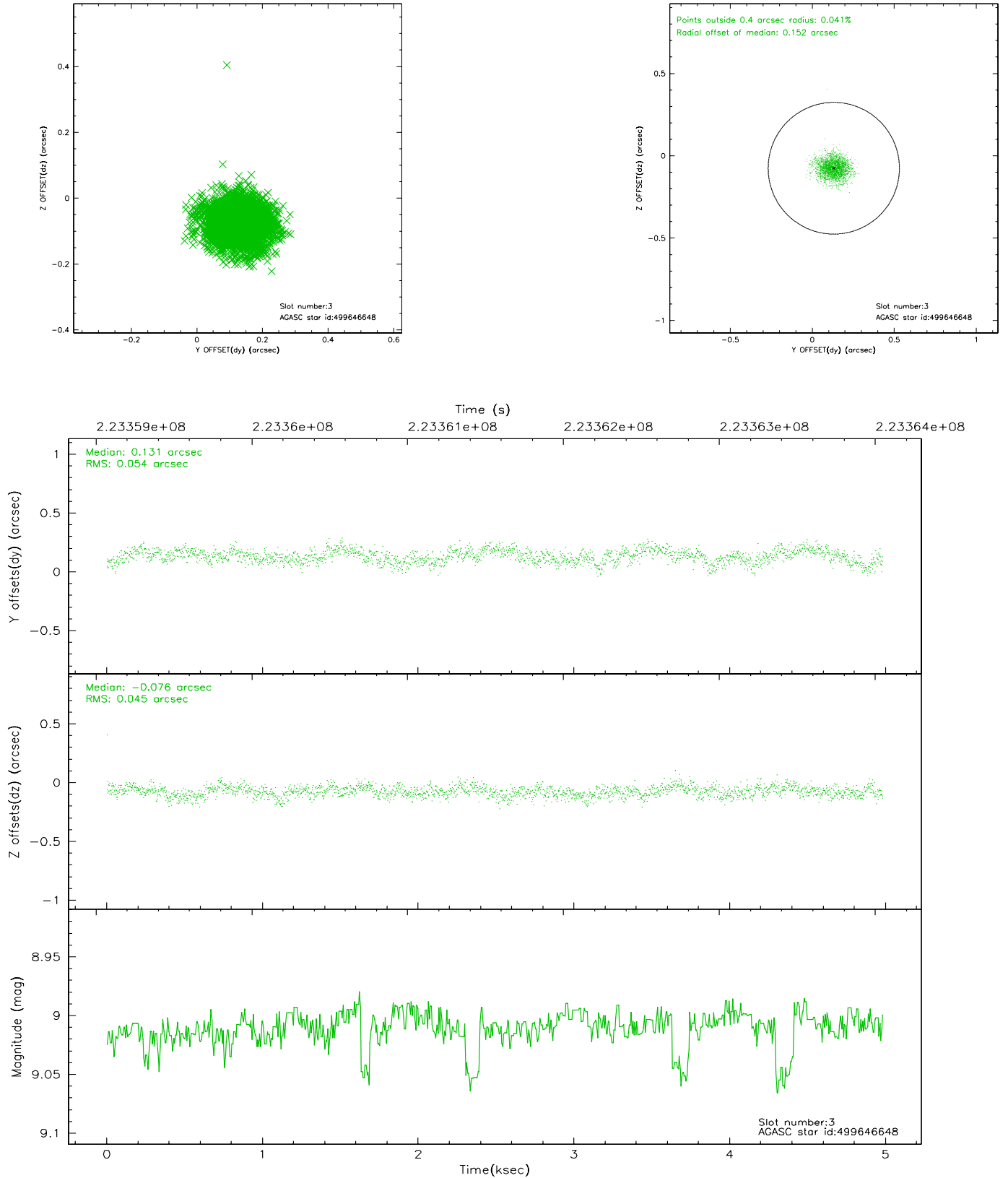
### Slot Statistics

slot	status	id	mag	n_pts	med_dy	med_dz	dr1	dr2	ra	dec	mean_y	mean_z
0	FID	ACIS-S-2	7.10	1214	-0.042	0.007	0.007	0.010	0.000000	0.000000	-759.84	-1731.84
1	FID	ACIS-S-4	7.21	1215	0.046	0.018	0.005	0.009	0.000000	0.000000	2152.93	175.46
2	FID	ACIS-S-5	7.23	1215	-0.036	-0.016	0.007	0.011	0.000000	0.000000	-1811.14	170.40
3	GUIDE	499646648	9.01	2426	0.131	-0.076	0.074	0.120	140.323063	59.053336	-1313.23	534.20
4	GUIDE	499647912	7.44	2430	-0.060	-0.074	0.057	0.094	140.122750	59.780701	-416.37	-1952.54
5	GUIDE	499648696	9.40	2426	-0.087	-0.025	0.121	0.191	140.684286	59.831807	-1371.79	-2345.13
6	GUIDE	499650904	9.41	2430	0.122	0.039	0.103	0.171	140.944462	59.318618	-2231.42	-642.52
7	GUIDE	499658904	10.31	2426	-0.102	0.140	0.145	0.235	139.272728	58.811932	424.33	1774.96

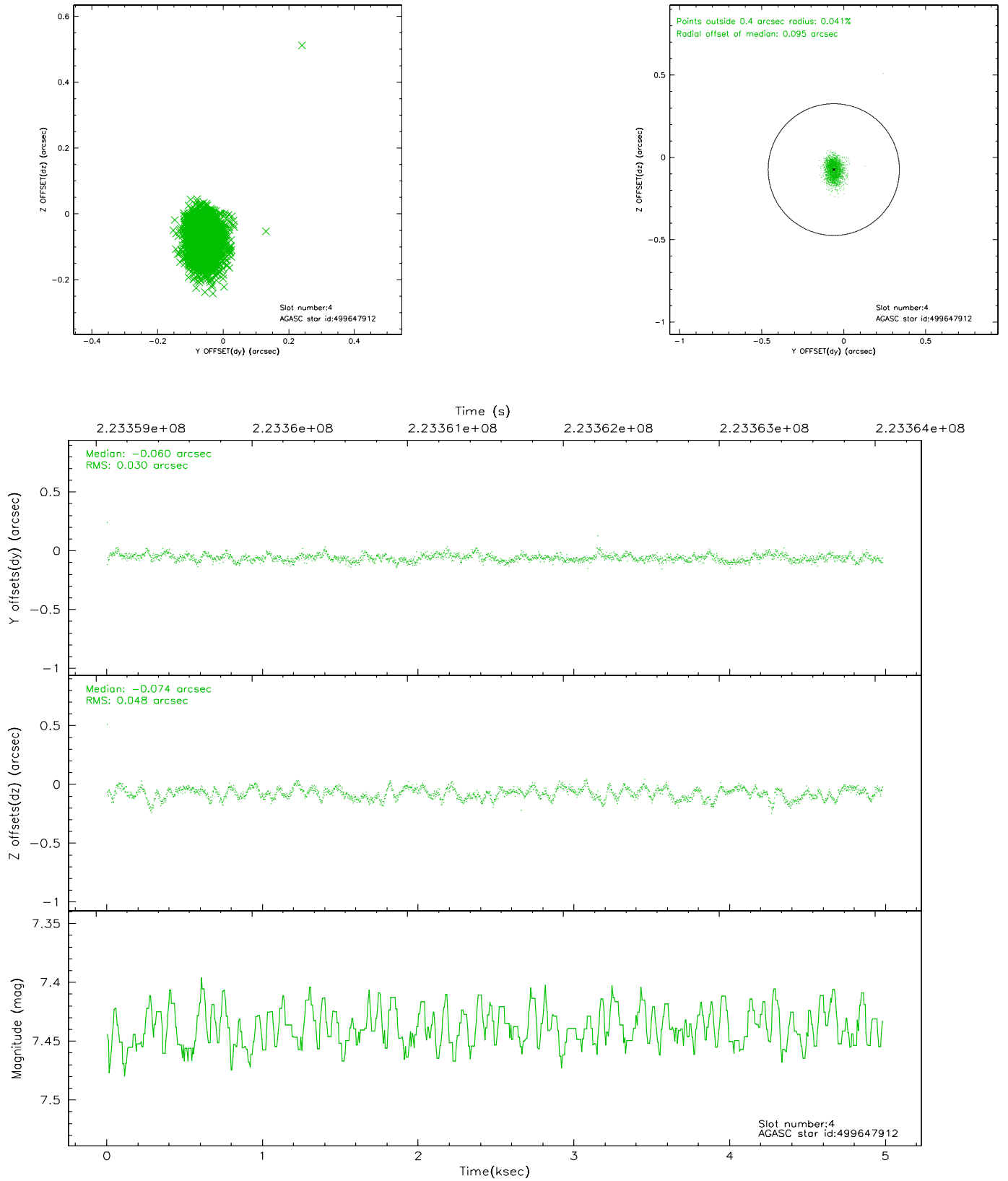


## 2.4 Star Slots

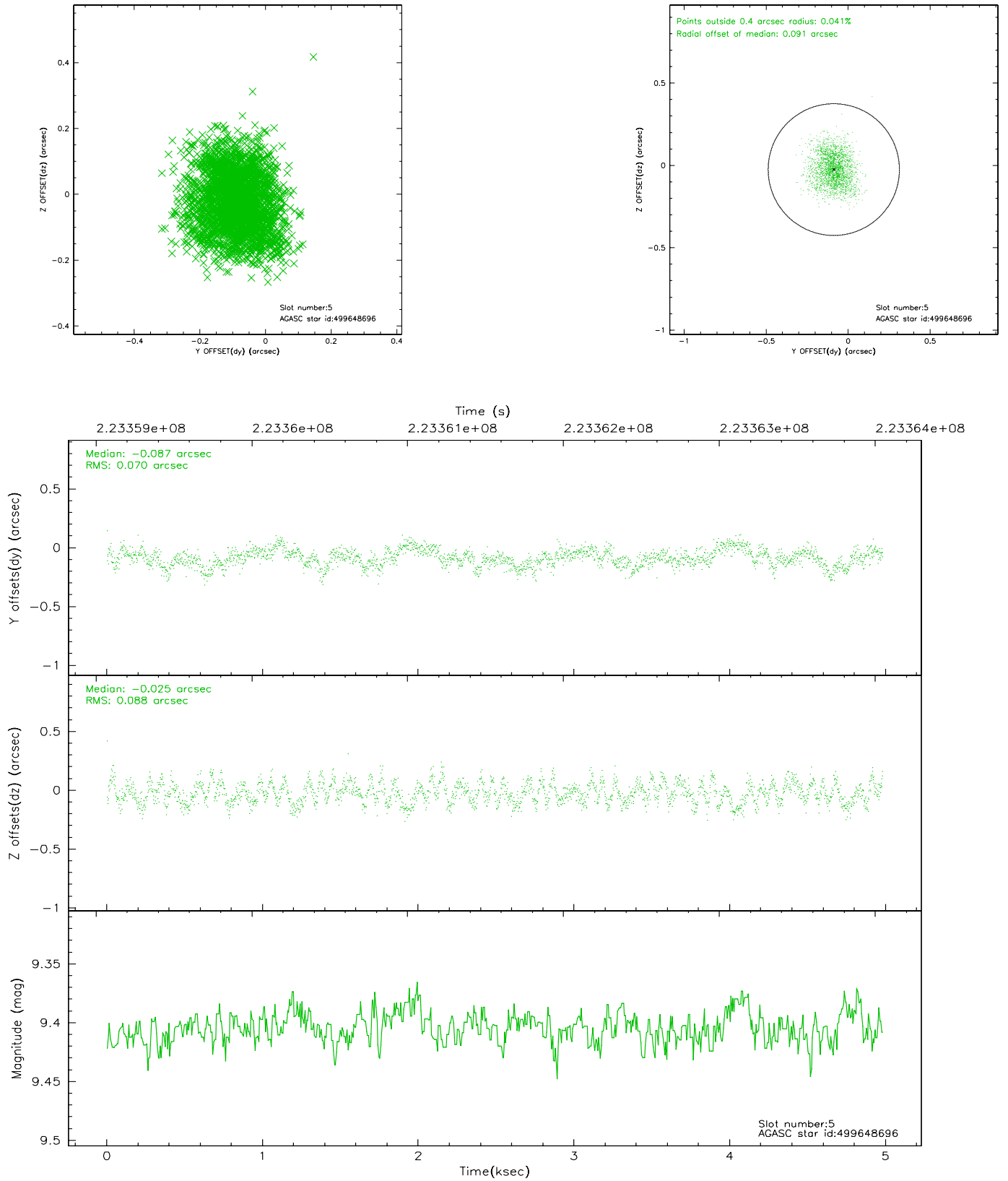
### 2.4.1 Slot 3



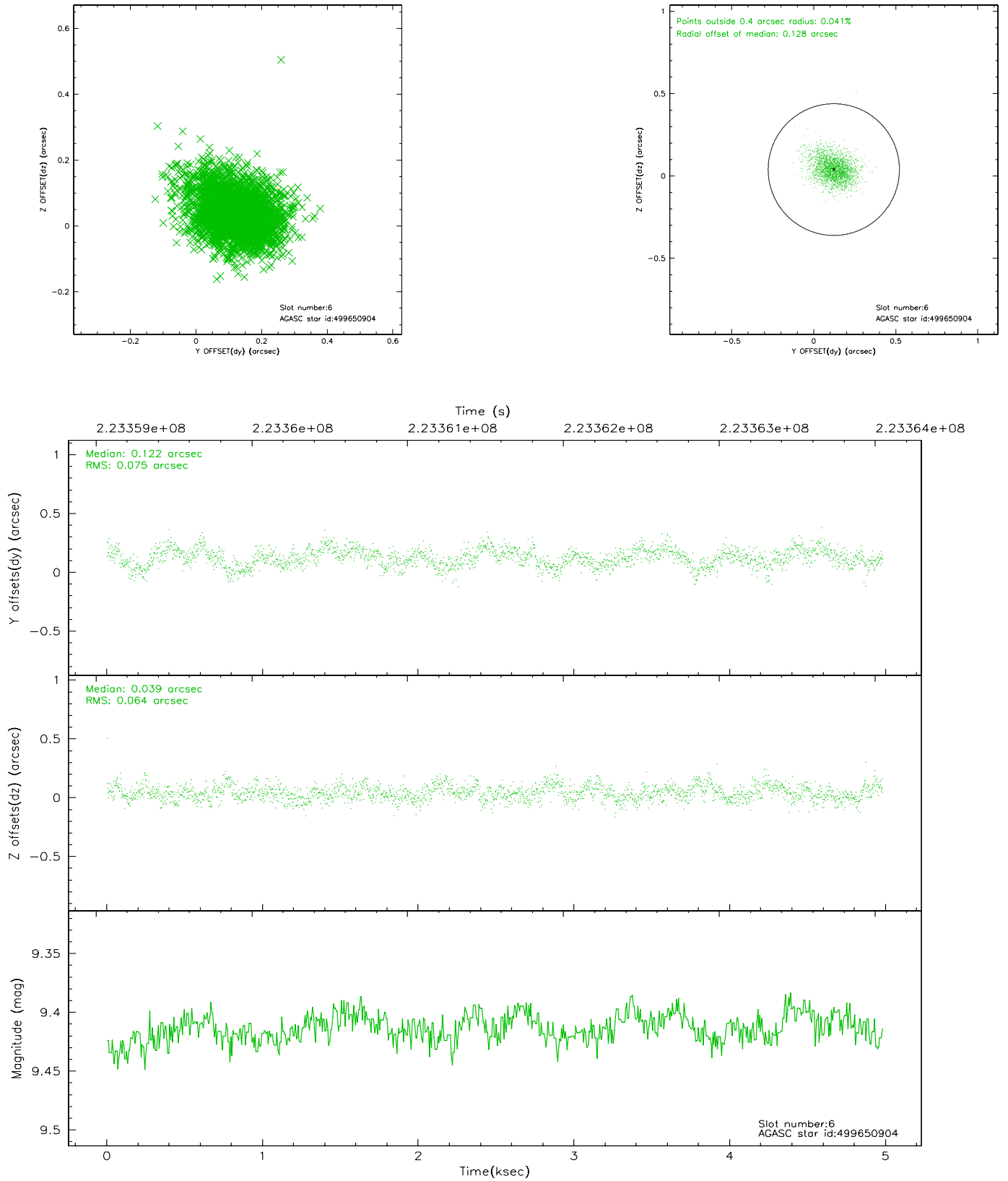
## 2.4.2 Slot 4



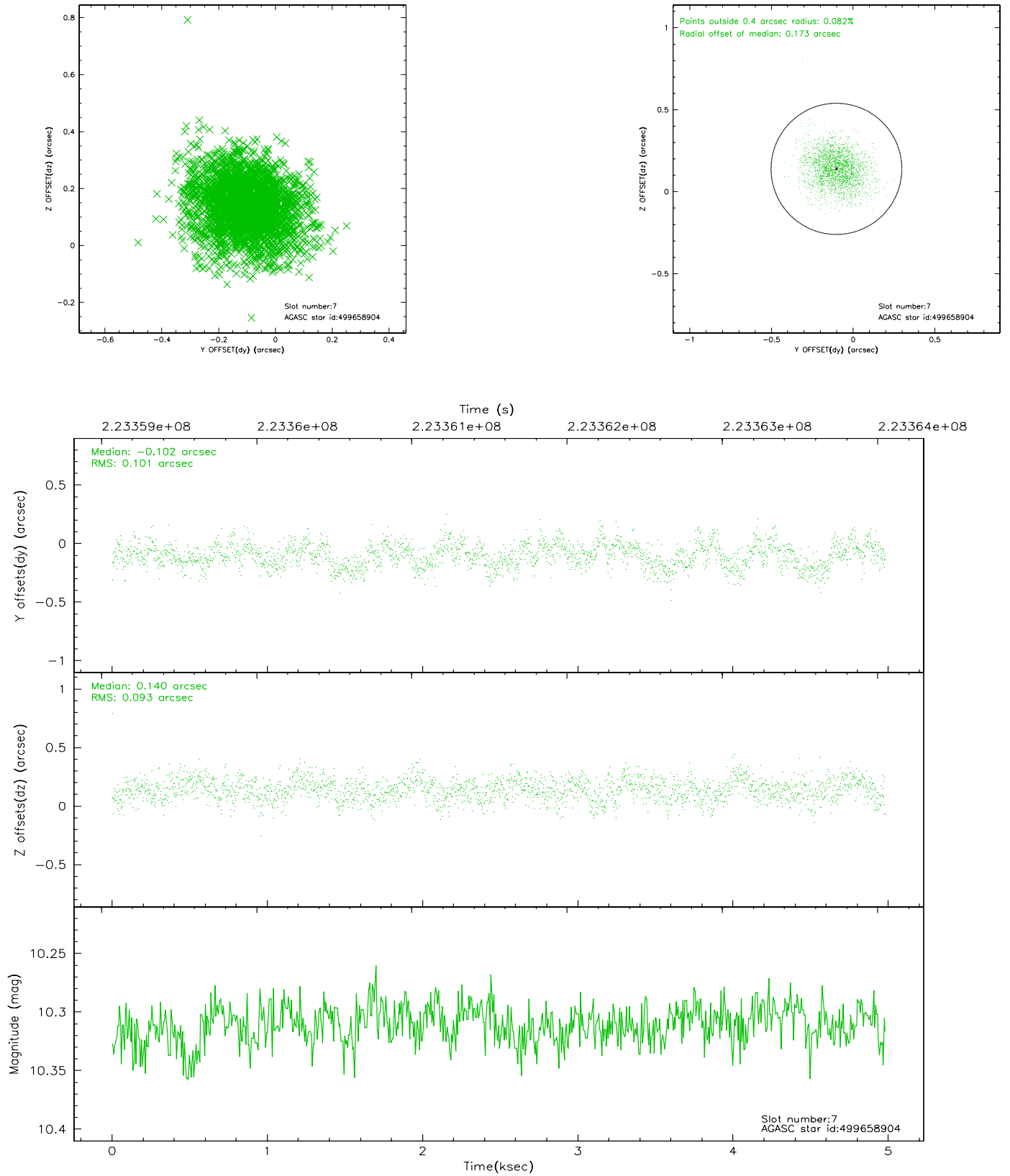
### 2.4.3 Slot 5



## 2.4.4 Slot 6

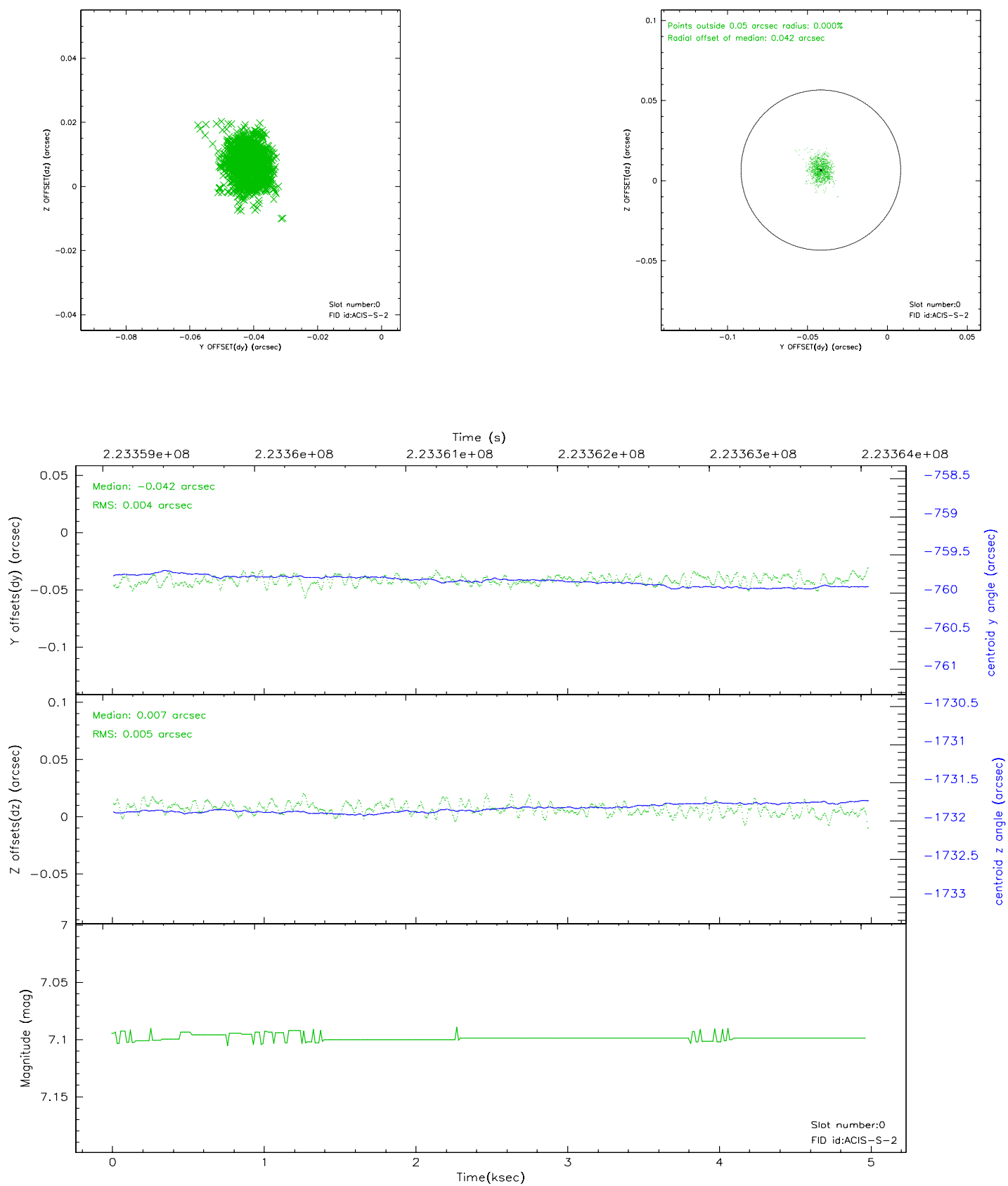


## 2.4.5 Slot 7

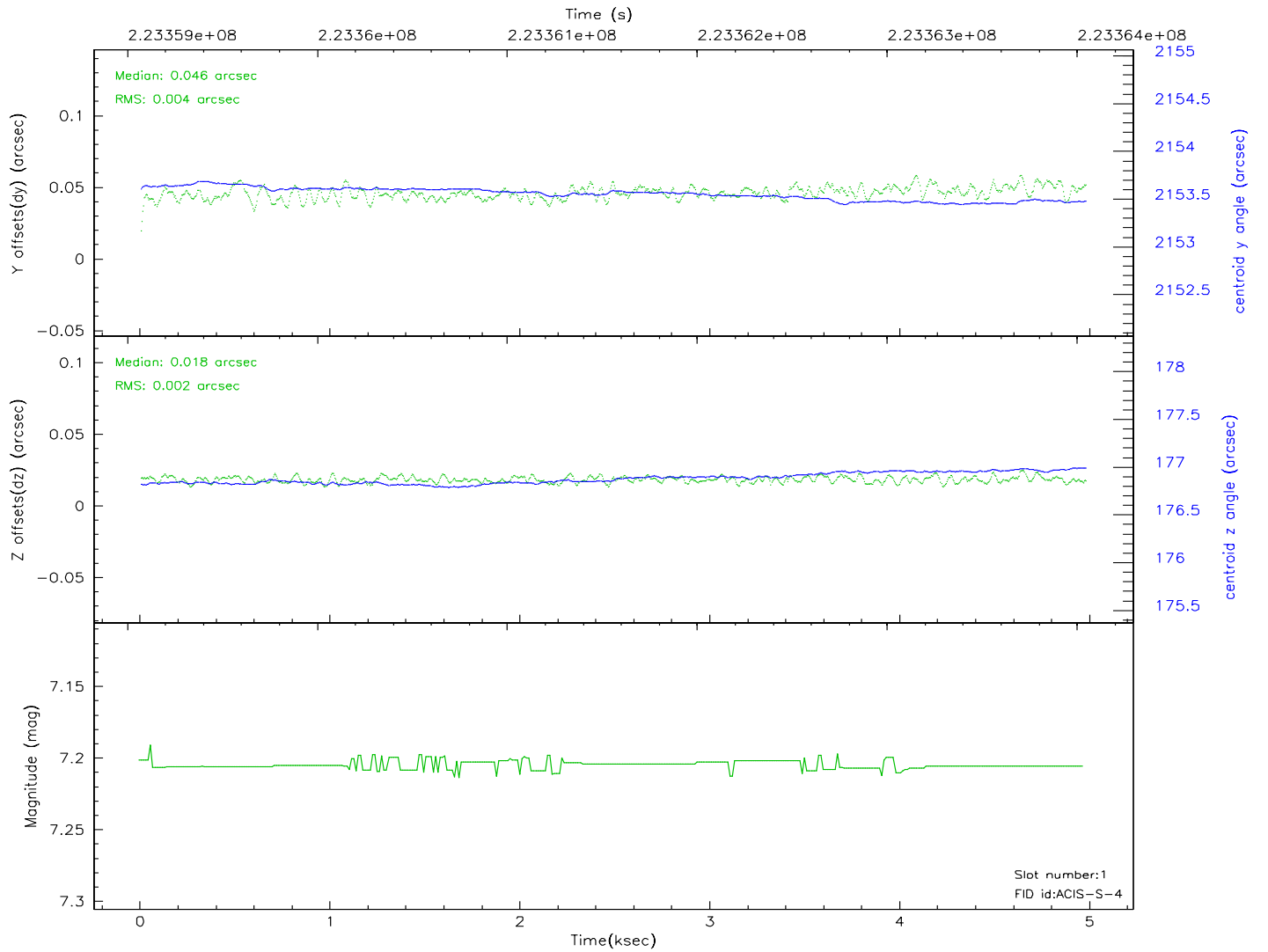
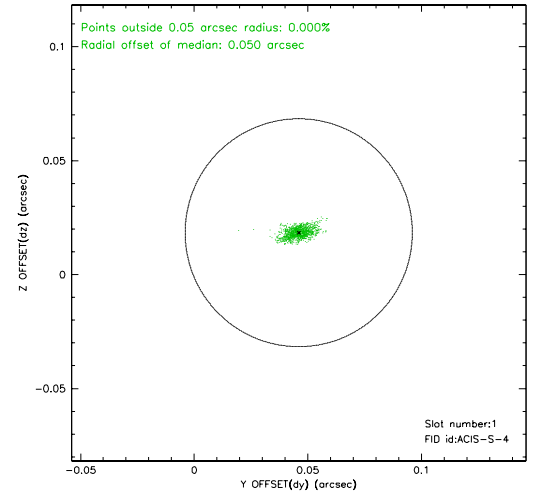
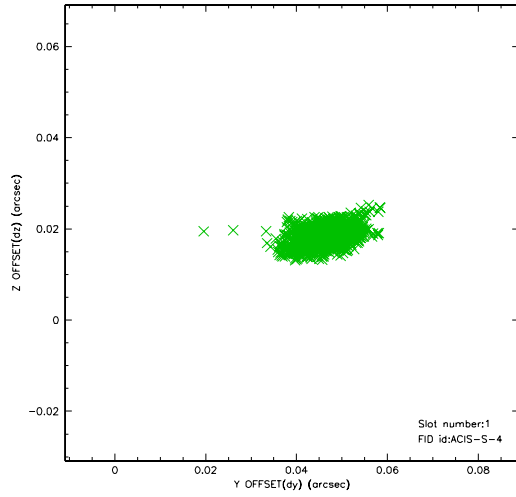


## 2.5 FID Slots

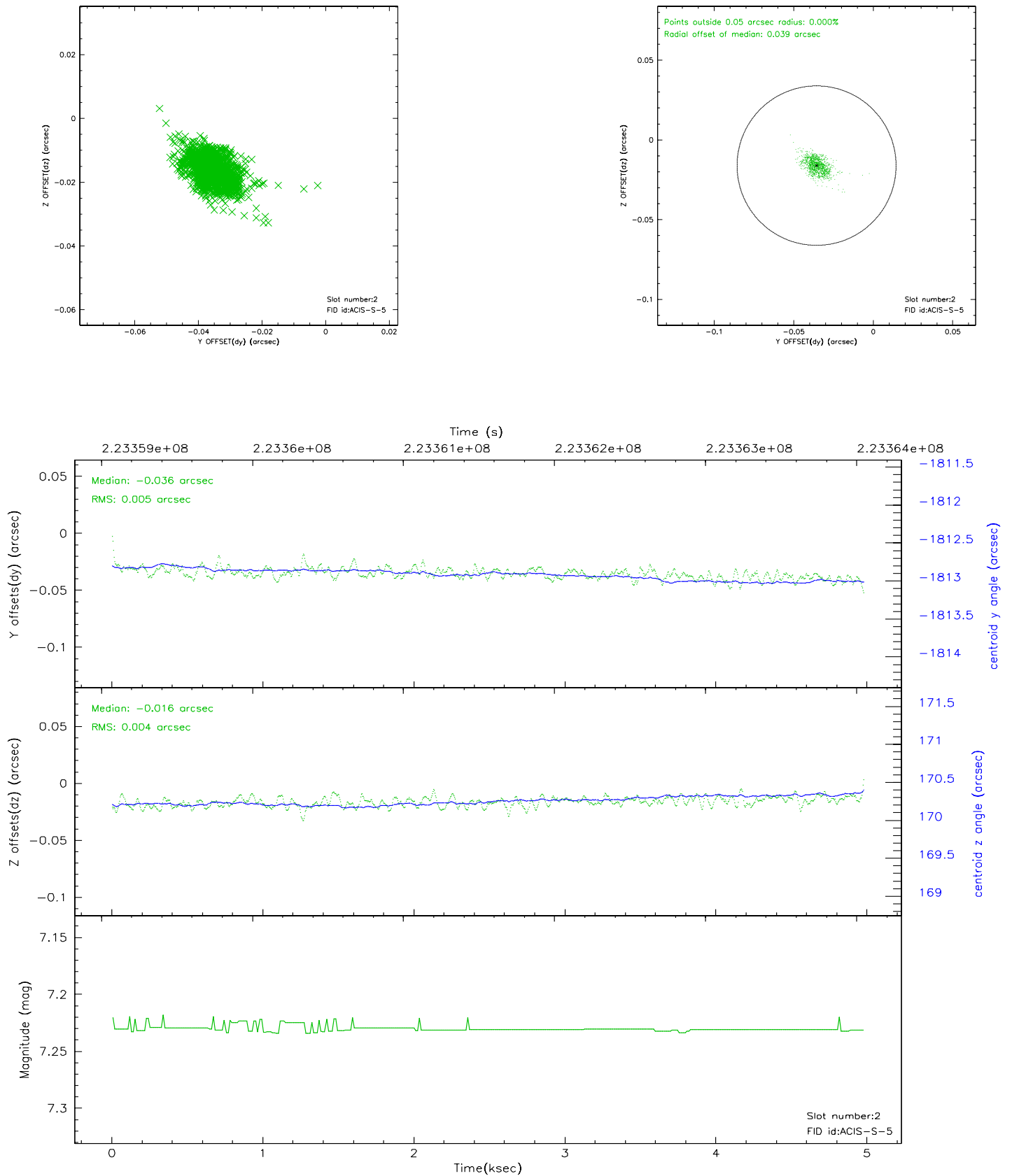
### 2.5.1 Slot 0



## 2.5.2 Slot 1

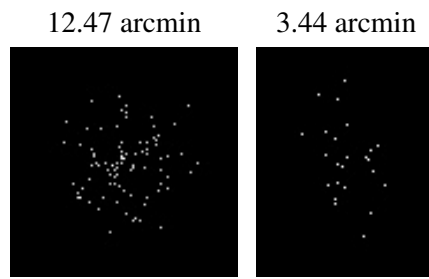


### 2.5.3 Slot 2





### 3 Point Sources



## A Summary

### A.1 Status

V&V Scientist	Jen Lauer
V&V Date (YYYY-MM-DD)	2006.02.21
V&V Edition	1
V&V Disposition and Status	OK
V&V Charge Time	4.972399

### A.2 Comments