

V&V Reference Report

L2 ASCDS Version : 8.5

Observation 5656 - L2 Version 3
Chandra X-Ray Center

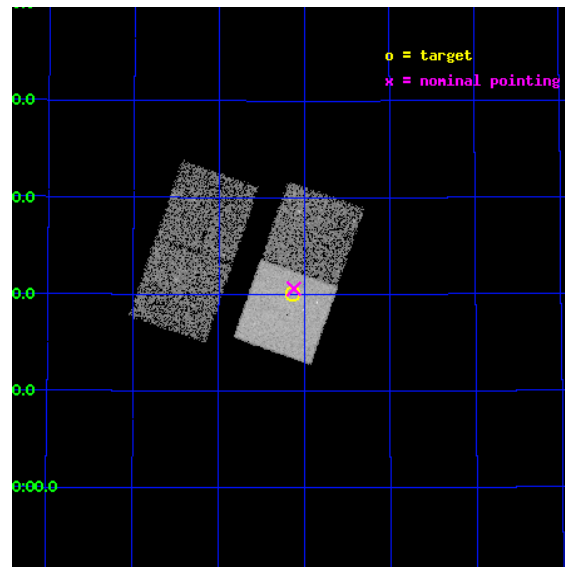
L2 Processing Date : Dec 12 2012

Contents

1	Front	2
2	OBI	3
2.1	OBI	3
2.1.1	Images	3
2.1.2	Bias	3
2.1.3	Parameters	4
2.1.4	Events	4
2.2	Compared Parameters	5
2.3	Aspect	6
2.4	Star Slots	9
2.4.1	Slot 3	9
2.4.2	Slot 4	10
2.4.3	Slot 5	11
2.4.4	Slot 6	12
2.4.5	Slot 7	13
2.5	FID Slots	14
2.5.1	Slot 0	14
2.5.2	Slot 1	15
2.5.3	Slot 2	16
A	Summary	17
A.1	Status	17
A.2	Comments	17

1 Front

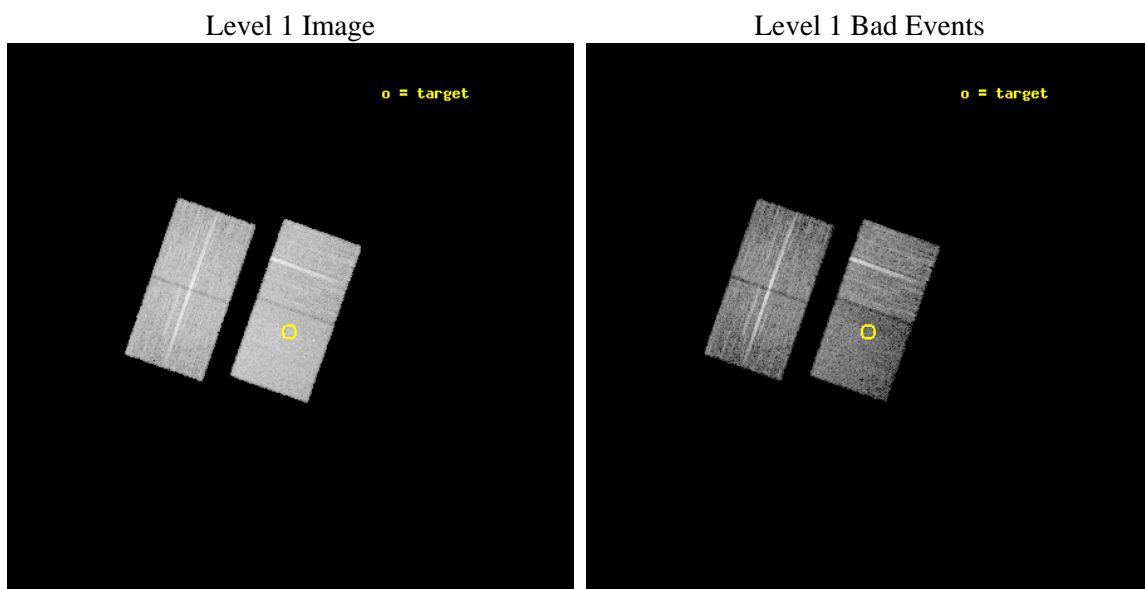
seq_num	701079	Sequence number
obs_id	5656	Observation id
title	The Spectral Energy Distribution and Fe II Emission in Intermediate-Redshift Narrow-line Seyfert 1 Galaxies	Proposal title
observer	Dr. Karen Leighly	Principal investigator
object	SDSS J083007.99+532000.9	Source name
dtcycle	0	
cycle	P	events from which exps? Prim/Second/Both
ra_targ	127.533333	Observer's specified target RA [deg]
dec_targ	53.333583	Observer's specified target Dec [deg]
ra_nom	127.53064867261	Nominal RA [deg]
dec_nom	53.343150819244	Nominal Dec [deg]
roll_nom	109.26683259888	Nominal Roll [deg]
revision	3	Processing version of data
ontime	11761.399977356	Sum of GTIs [s]
livetime	11607.728628035	Livetime [s]
ontime2	11761.399977356	Sum of GTIs [s]
ontime3	11758.258987099	Sum of GTIs [s]
ontime6	11761.399977356	Sum of GTIs [s]
ontime7	11761.399977356	Sum of GTIs [s]
l2events	54726	Number of level 2 events



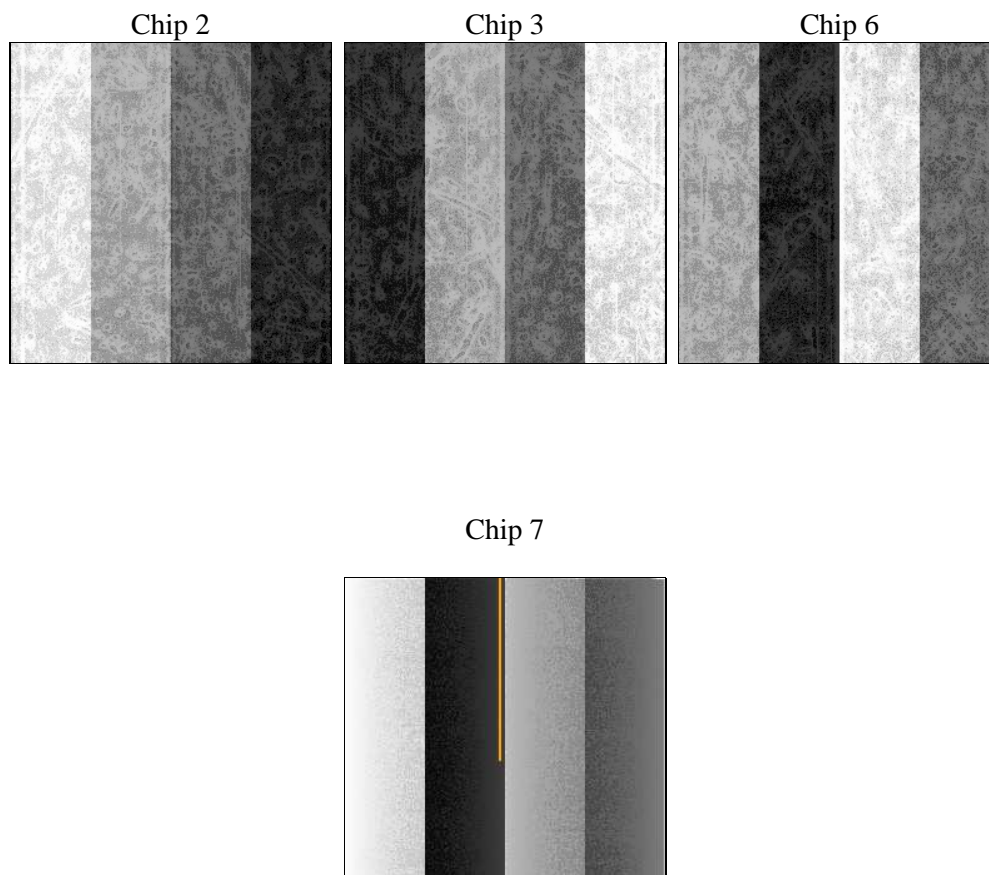
2 OBI

2.1 OBI

2.1.1 Images



2.1.2 Bias



2.1.3 Parameters

obi_num	0	Obi number	sched_exp_time	11588.840000	[s] Scheduled observation exposure time
ascdsver	8.5.0.1	Processing system revision	ontime	11761.399977356	Sum of GTIs [s]
caldsver	4.5.4	 	ontime2	11761.399977356	Sum of GTIs [s]
date	2012-12-12T13:28:16	Date and time of file creation	ontime3	11758.258987099	Sum of GTIs [s]
revision	3	Processing version of data	ontime6	11761.399977356	Sum of GTIs [s]
			ontime7	11761.399977356	Sum of GTIs [s]
			l1events	349507	Number of level 1 events

2.1.4 Events

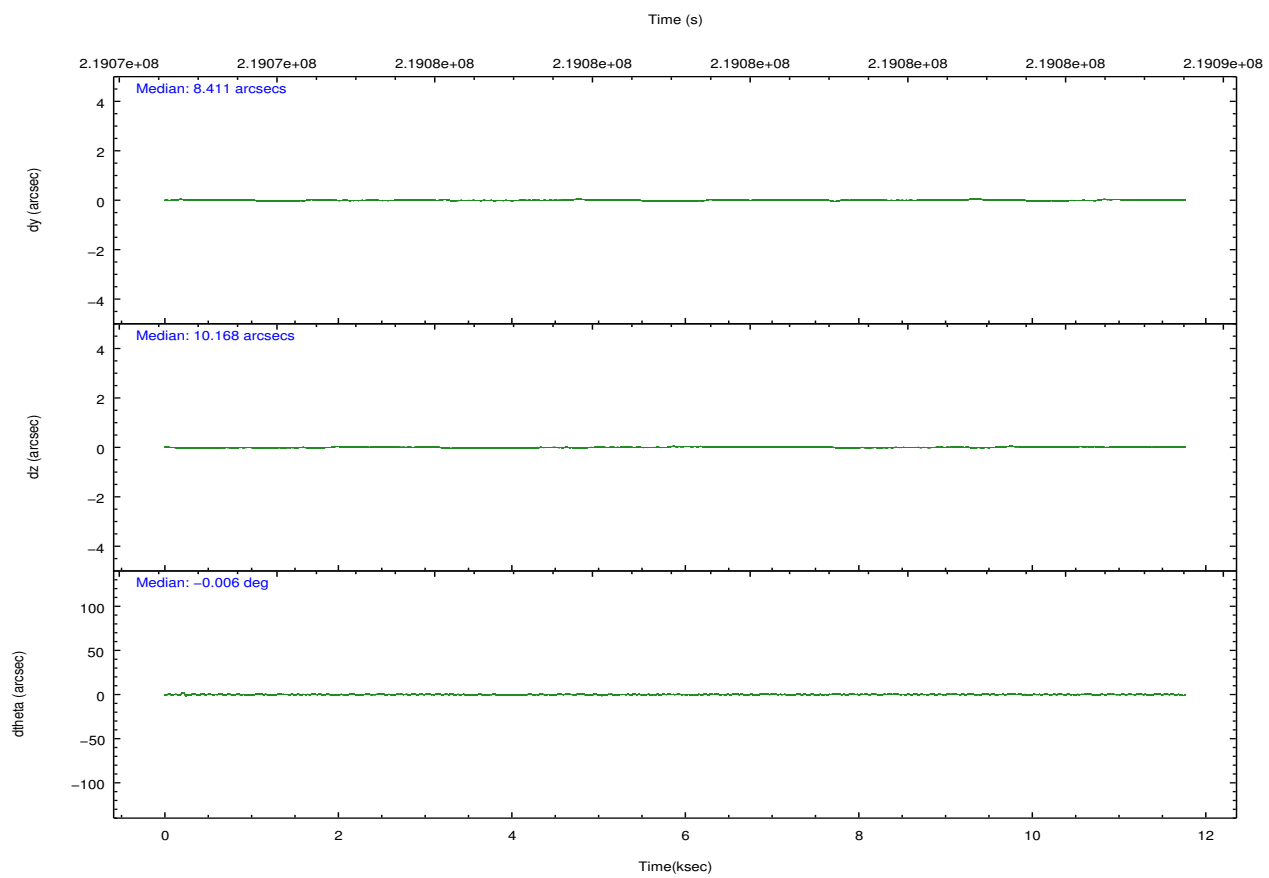
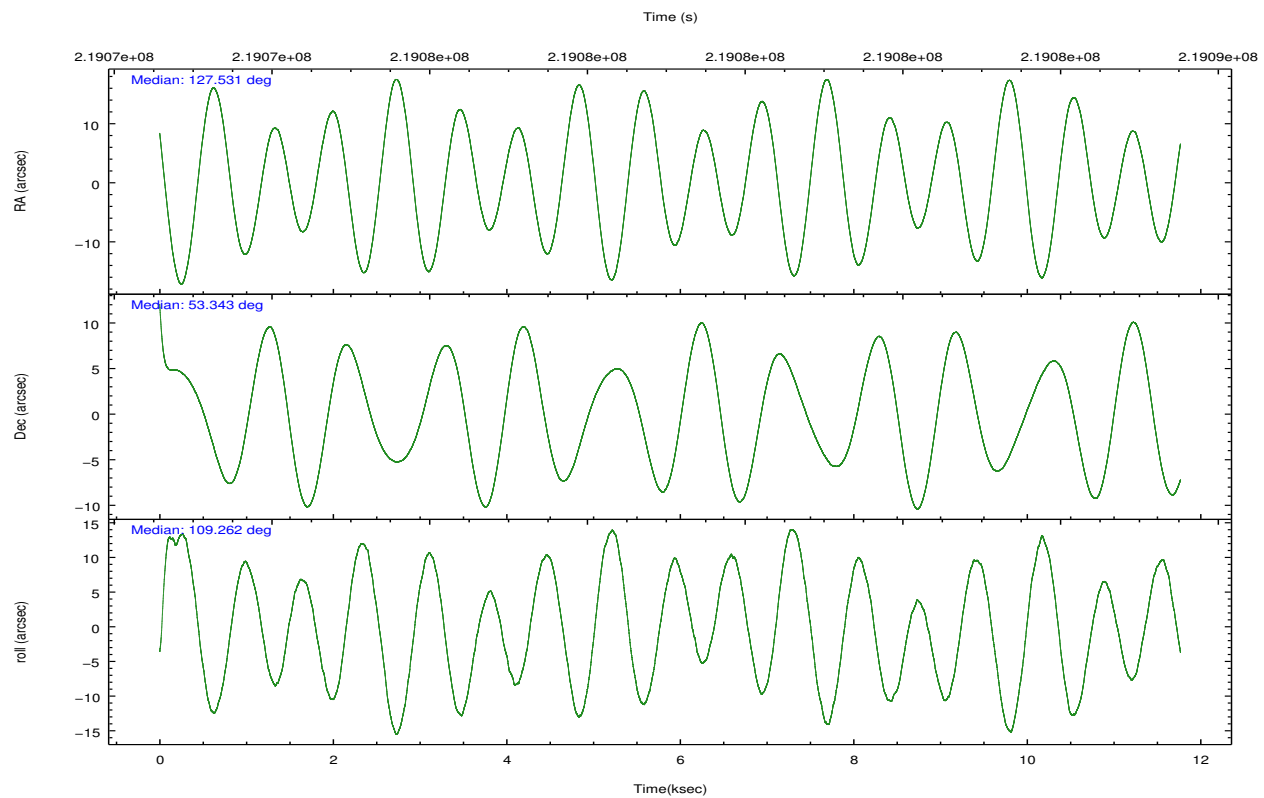
	ccd 2	ccd 3	ccd 6	ccd 7
level 1 events	86980	81856	88712	91959
rejected events	80053	75188	80950	54314
rejected %	92%	91%	91%	59%

	ccd 2	ccd 3	ccd 6	ccd 7
grade 0 events	2827	2581	3123	3852
	3%	3%	3%	4%
grade 1 events	33	39	24	74
	0%	0%	0%	0%
grade 2 events	1768	1554	1786	8365
	2%	1%	2%	9%
grade 3 events	872	878	966	3982
	1%	1%	1%	4%
grade 4 events	899	908	939	3947
	1%	1%	1%	4%
grade 5 events	2760	3266	3276	9777
	3%	3%	3%	10%
grade 6 events	1419	1516	1829	21658
	1%	1%	2%	23%
grade 7 events	76402	71114	76769	40304
	87%	86%	86%	43%

2.2 Compared Parameters

Parameter	Planned	Actual	Parameter	Planned	Actual
Instrument	ACIS	ACIS	Obspar format version number	7	7
Detector	ACIS-2367	ACIS-2367	Obspar file type	PREDICTED	ACTUAL
Grating	NONE	NONE	Obspar update status	NONE	UPDATED
Data mode	VFAINT	VFAINT	Number of optional ACIS chips dropped	0	0
Observation mode	POINTING	POINTING	On-chip summing requested	N	N
[deg] Pointing RA	127.565695	127.5306486726136	Subarray requested	NONE	NONE
[deg] Pointing Dec	53.325628	53.34315081924436	Alternating exposures requested	N	N
[deg] Pointing Roll	109.082098	109.2668325988838	[s] Primary exposure time	0.000000	3.1
[mm] SIM focus pos	-0.684267	-0.6828225247311905			
[mm] SIM defocus	0	0.001444936568705701			
[mm] SIM translation stage pos	-190.132523	-190.1400660498719			
[mm] SIM translation stage offset	0	0.00754346686406393			
[s] Observation start time (MET)	219073345.184000	219071746.59105			
Observation start date	2004-12-10T13:41:21	2004-12-10T13:15:46			
[s] Observation end time (MET)	219084934.184000	219085158.71665			
Observation end date	2004-12-10T16:54:30	2004-12-10T16:59:18			
Read mode	TIMED	TIMED			

2.3 Aspect

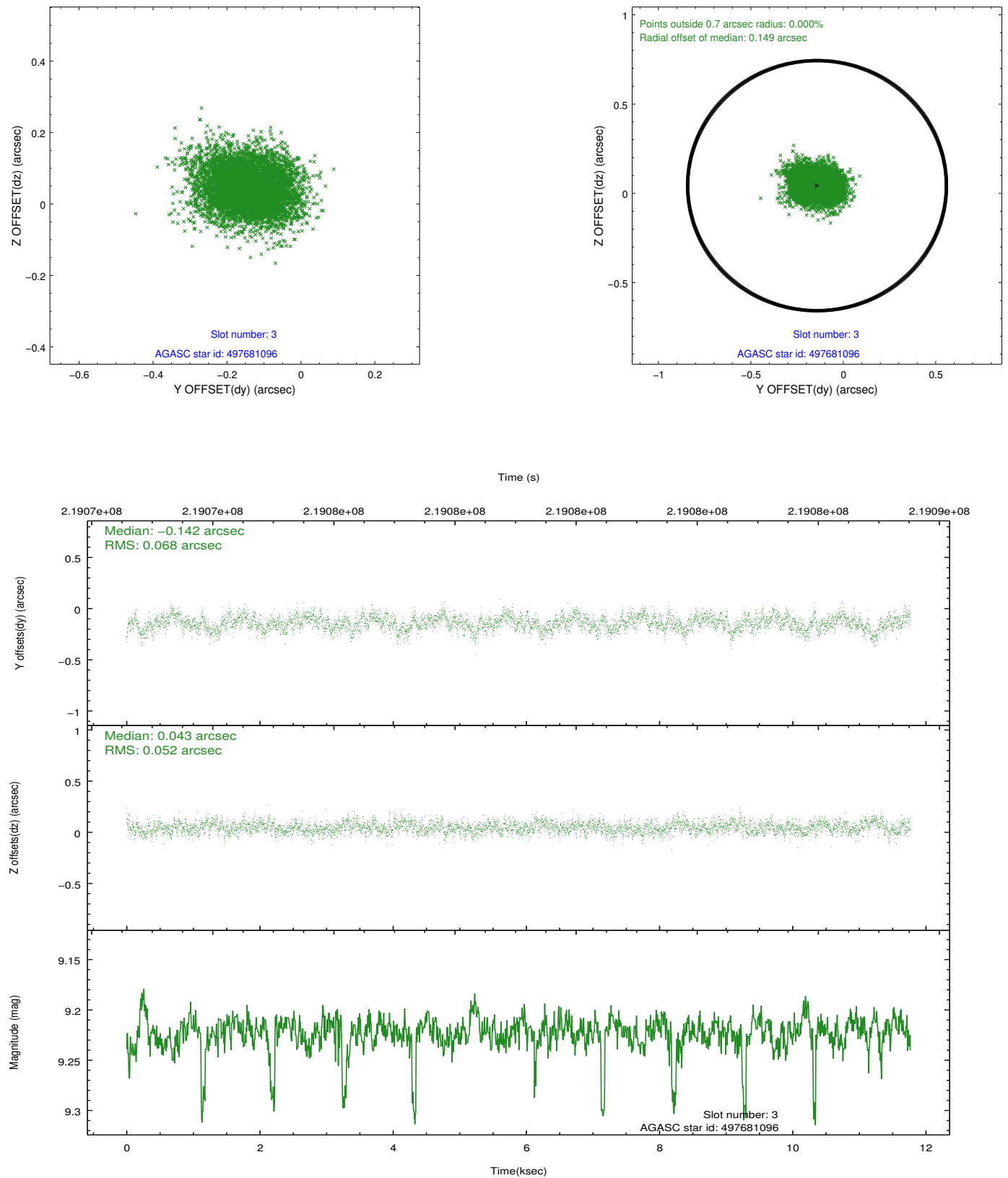


Slot Statistics

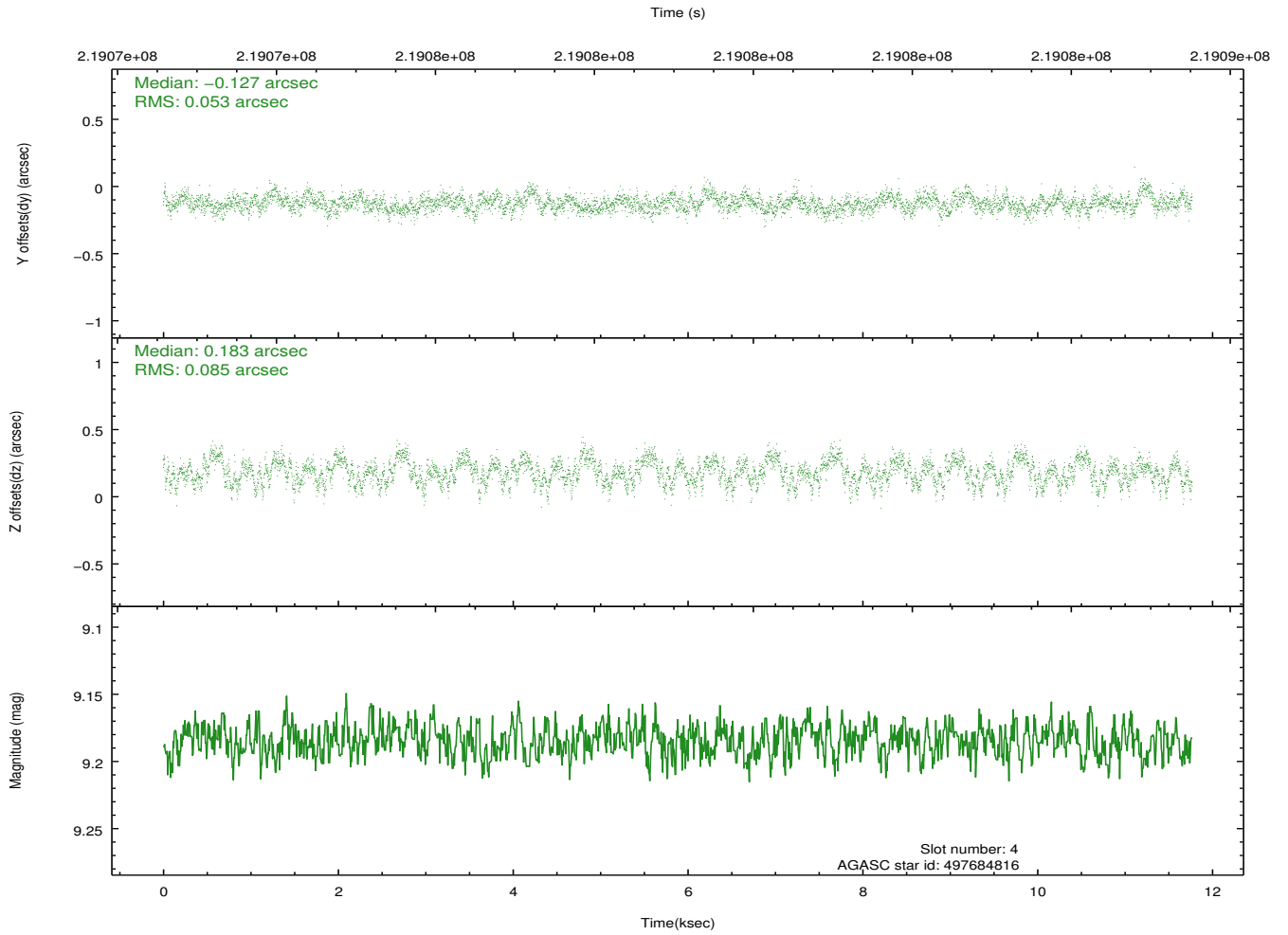
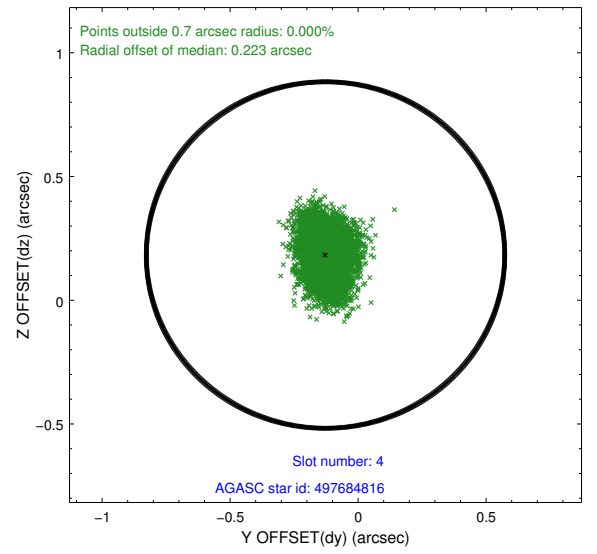
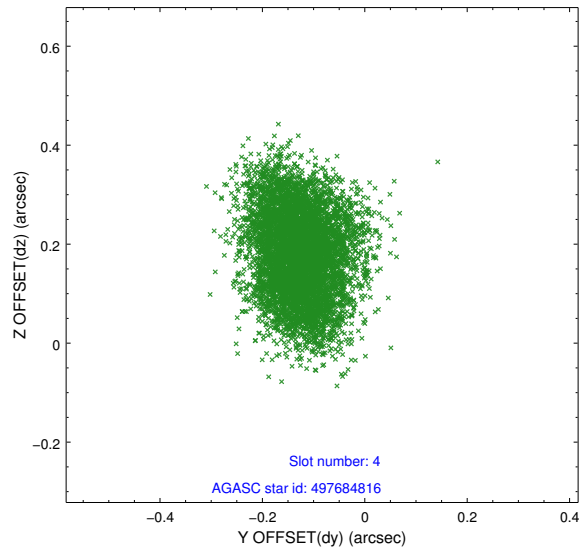
slot	status	id	mag	n_pts	med_dy	med_dz	dr1	dr2	ra	dec	mean_y	mean_z
0	FID	ACIS-S-2	7.11	2871	-0.042	-0.025	0.007	0.011	0.000000	0.000000	-761.19	-1731.46
1	FID	ACIS-S-4	7.21	2871	0.130	0.027	0.006	0.011	0.000000	0.000000	2152.01	176.71
2	FID	ACIS-S-5	7.23	2870	-0.119	0.006	0.006	0.011	0.000000	0.000000	-1813.61	170.74
3	GUIDE	497681096	9.22	5713	-0.142	0.043	0.090	0.150	127.351200	53.942666	2248.60	-296.65
4	GUIDE	497684816	9.18	5739	-0.127	0.183	0.108	0.172	128.442903	53.709017	704.86	-2221.19
5	GUIDE	497690224	7.86	5742	0.132	0.014	0.062	0.097	127.850163	53.122165	-891.59	-342.20
6	GUIDE	497691032	9.37	5737	0.164	0.029	0.132	0.206	128.584665	53.177597	-1207.50	-1908.44
7	GUIDE	497694416	7.00	5741	-0.027	-0.270	0.057	0.088	126.980243	53.457235	862.70	1028.97

2.4 Star Slots

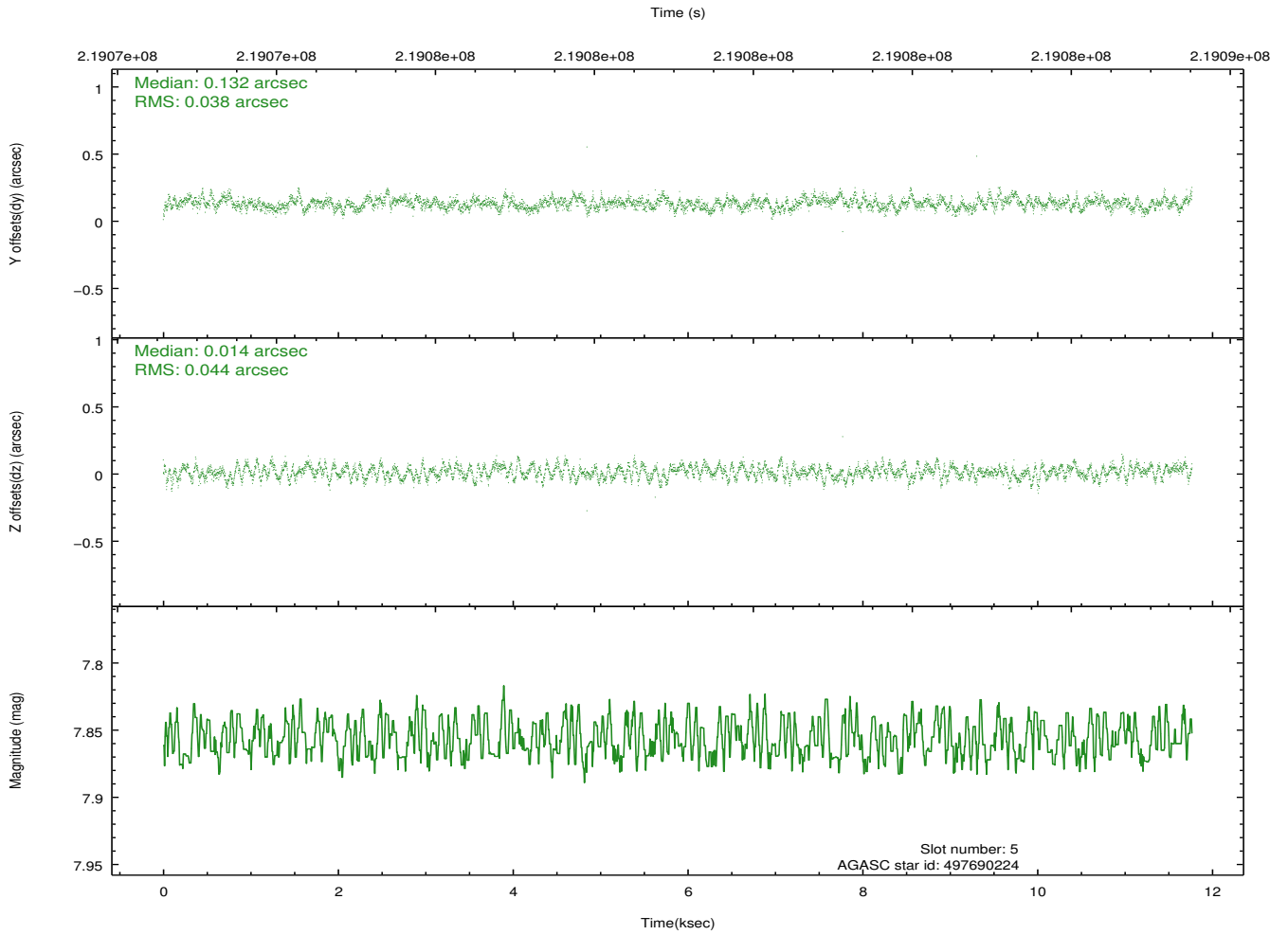
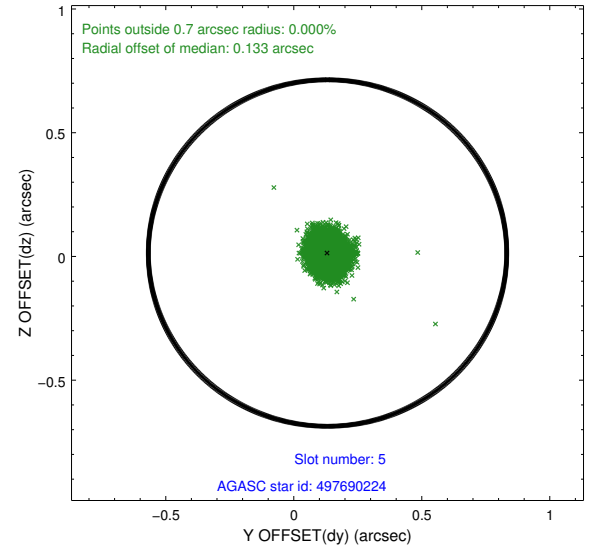
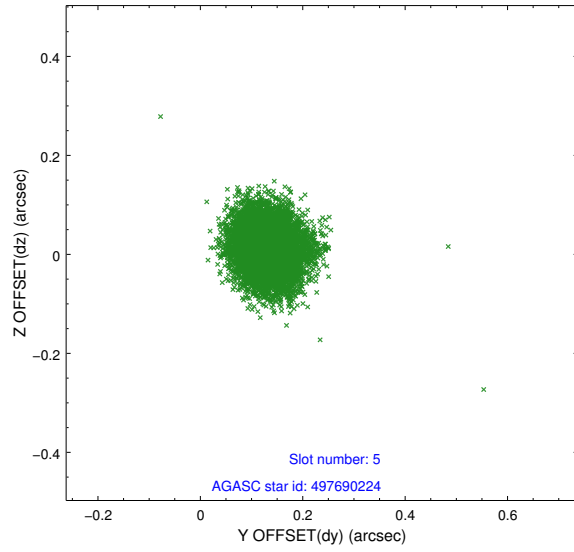
2.4.1 Slot 3



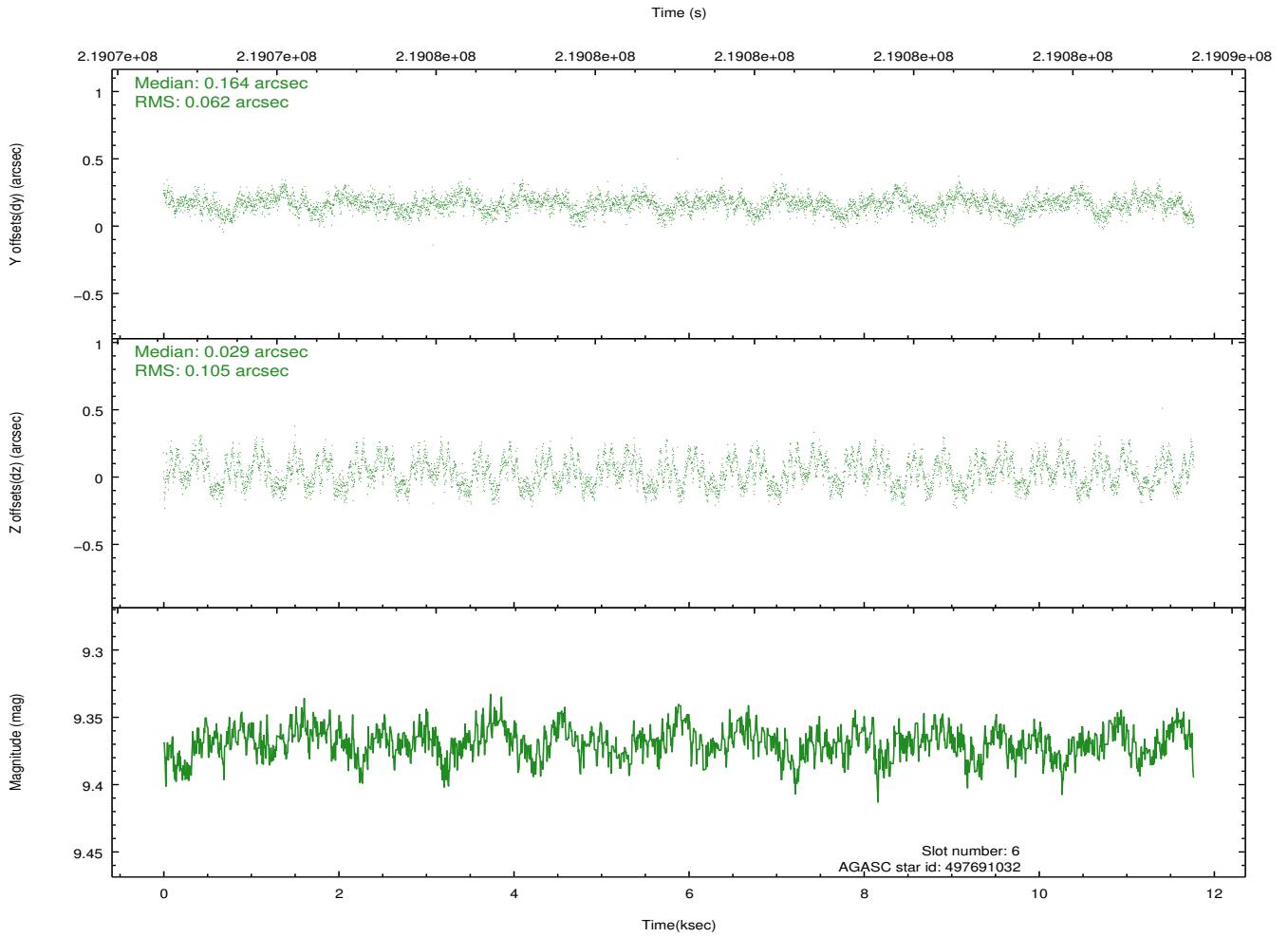
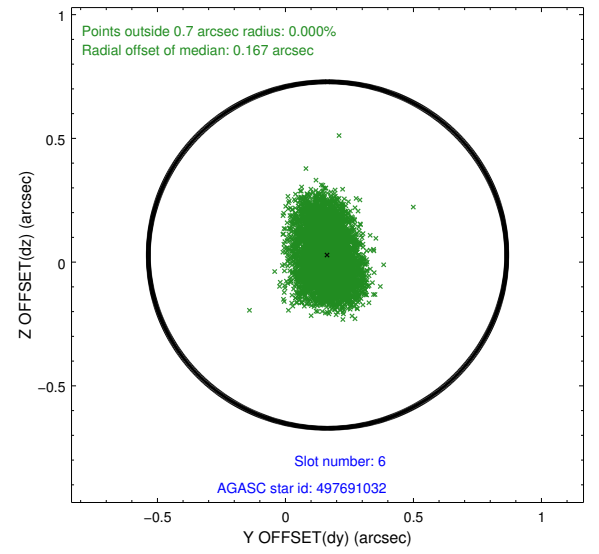
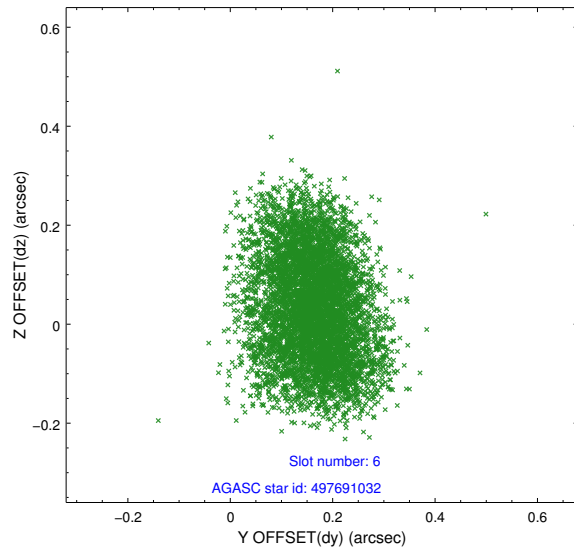
2.4.2 Slot 4



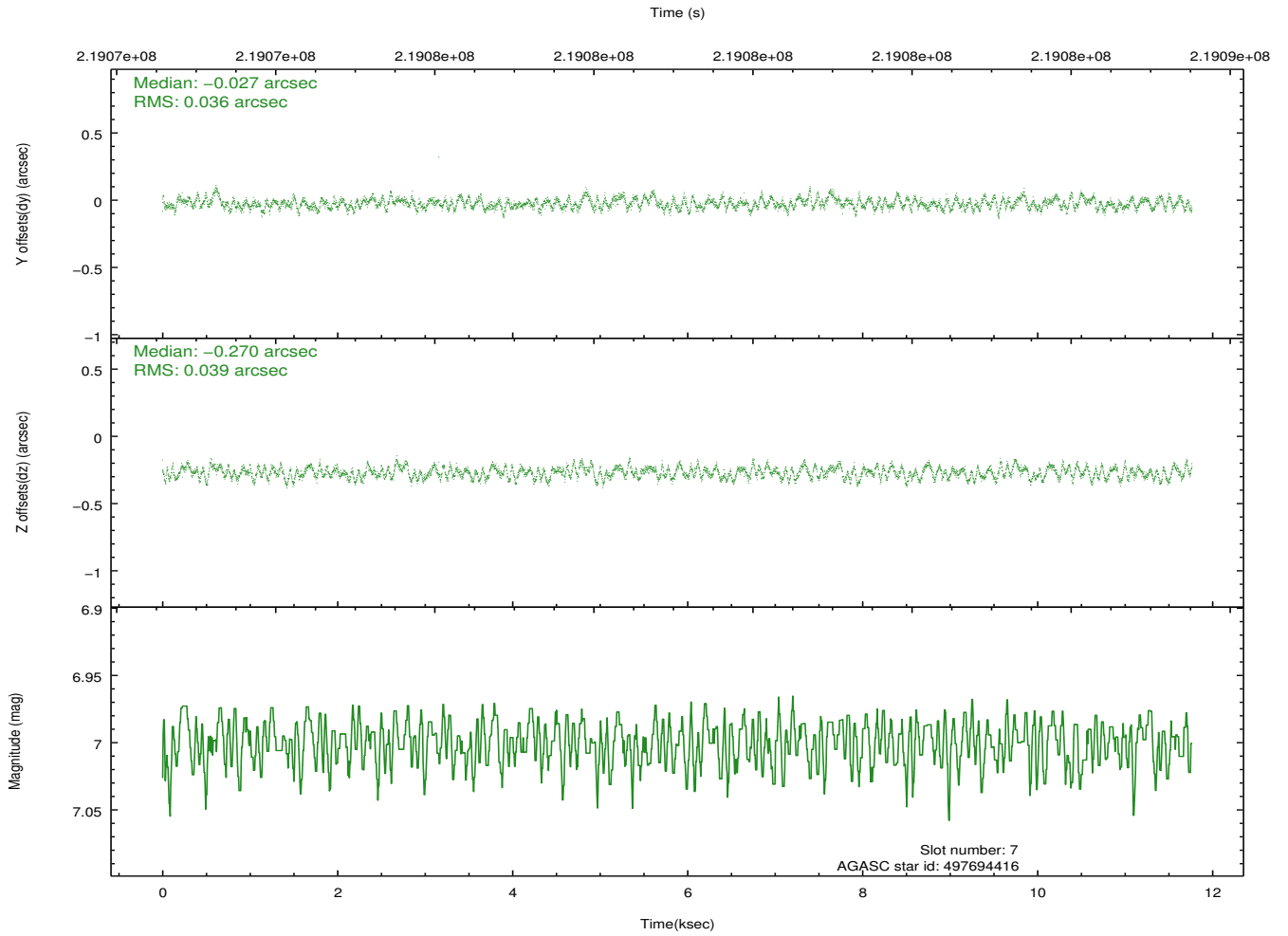
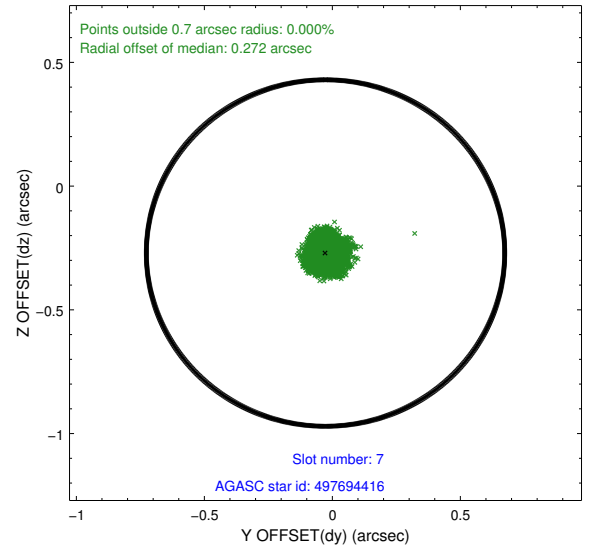
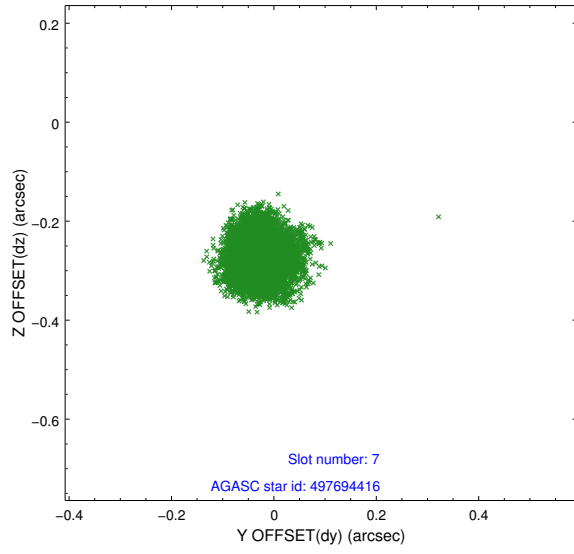
2.4.3 Slot 5



2.4.4 Slot 6

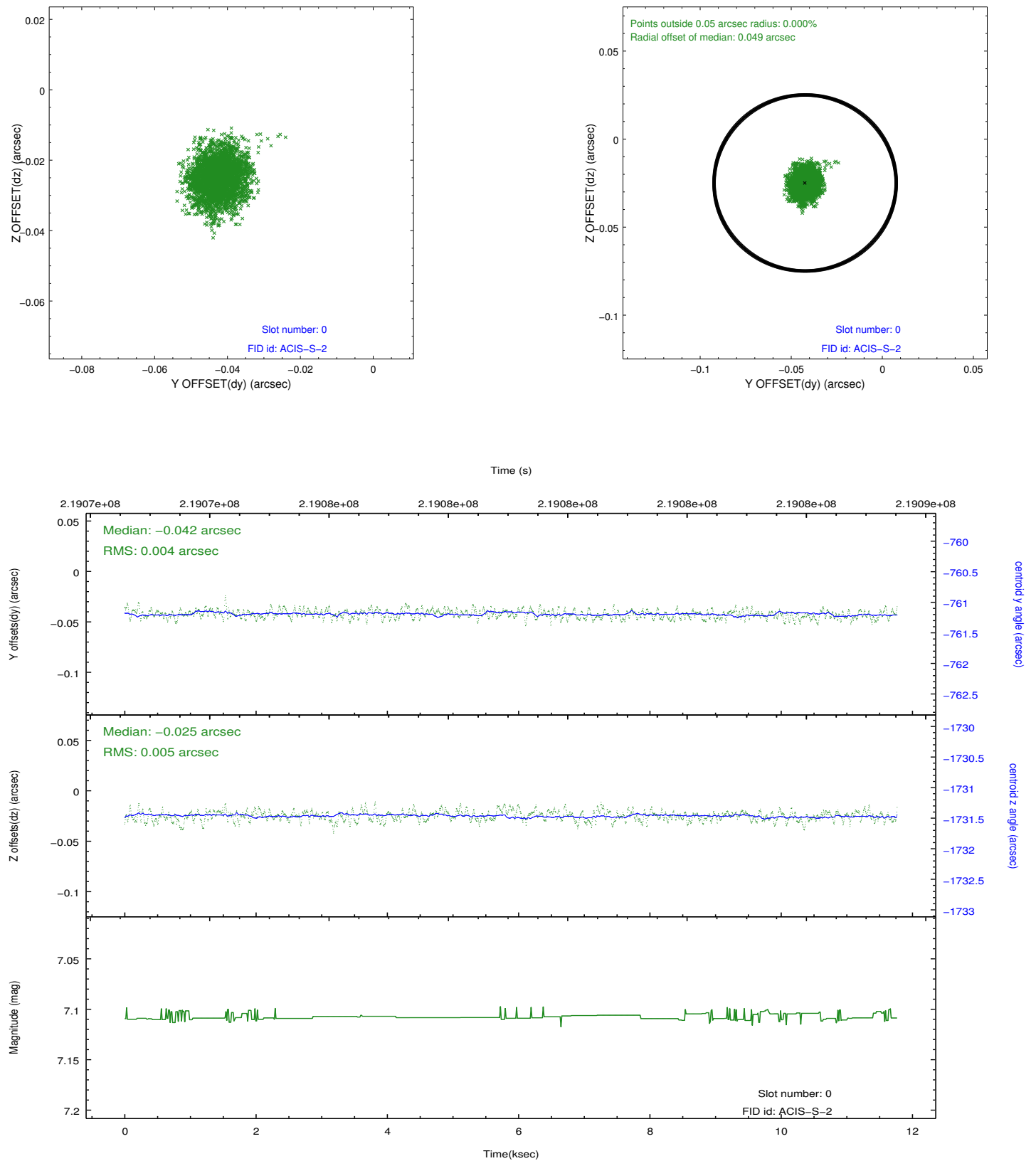


2.4.5 Slot 7

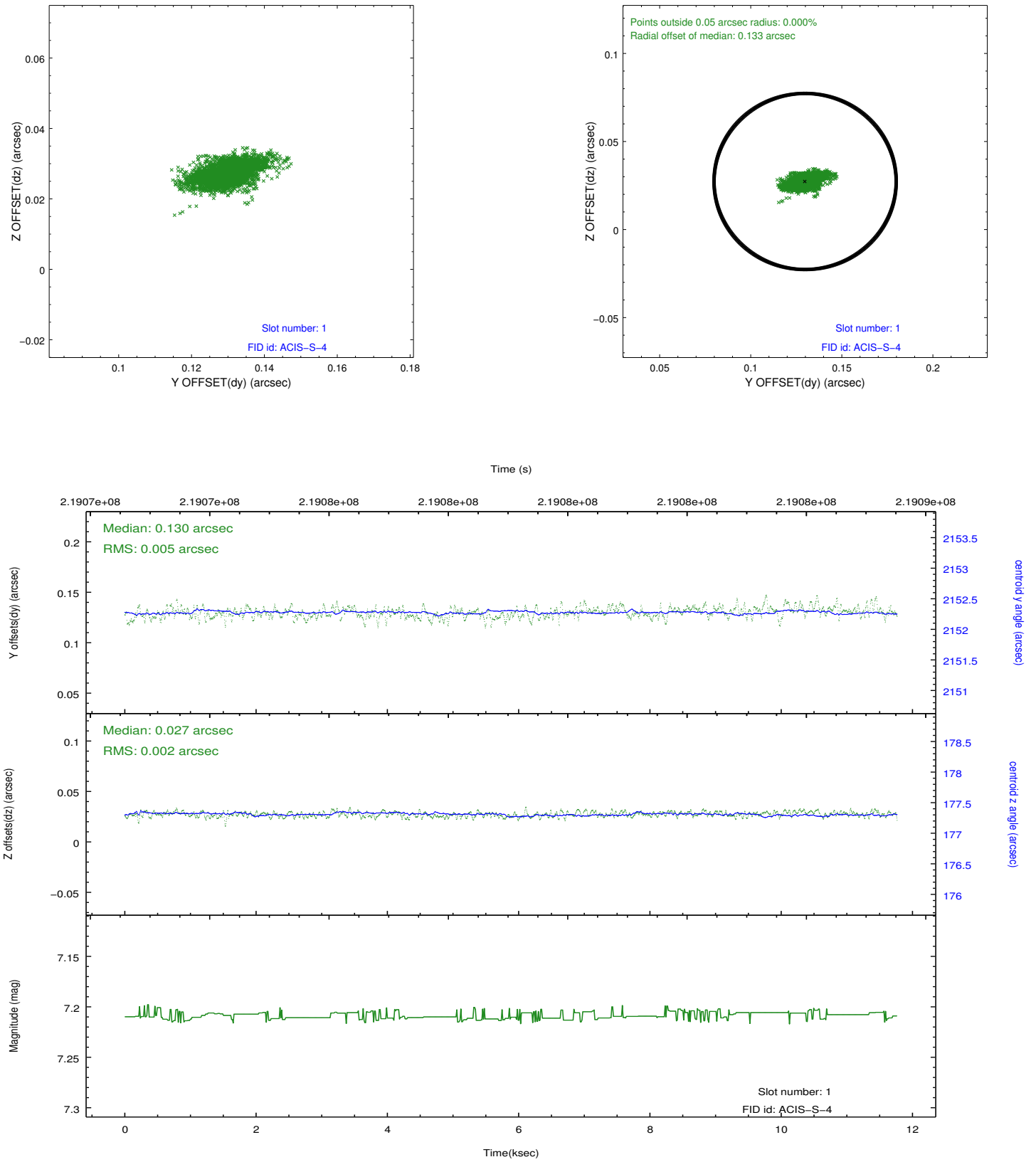


2.5 FID Slots

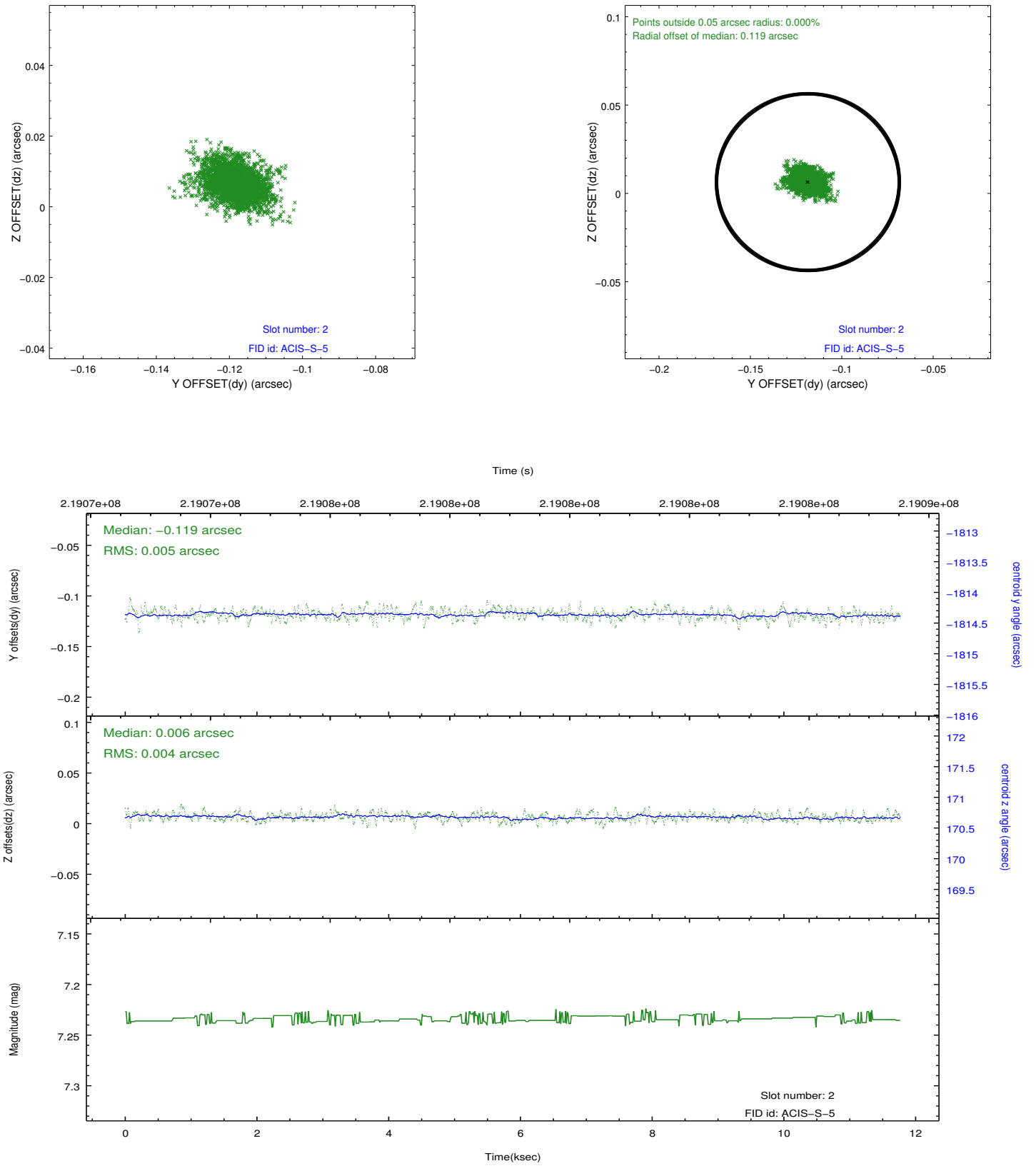
2.5.1 Slot 0



2.5.2 Slot 1



2.5.3 Slot 2



A Summary

A.1 Status

V&V Scientist	Jen Lauer
V&V Date (YYYY-MM-DD)	2013.01.04
V&V Edition	1
V&V Disposition and Status	OK
V&V Charge Time	11.76139

A.2 Comments