

V&V Reference Report

L2 ASCDS Version : 7.6.7.1

Observation 5656 - L2 Version 002
Chandra X-Ray Center

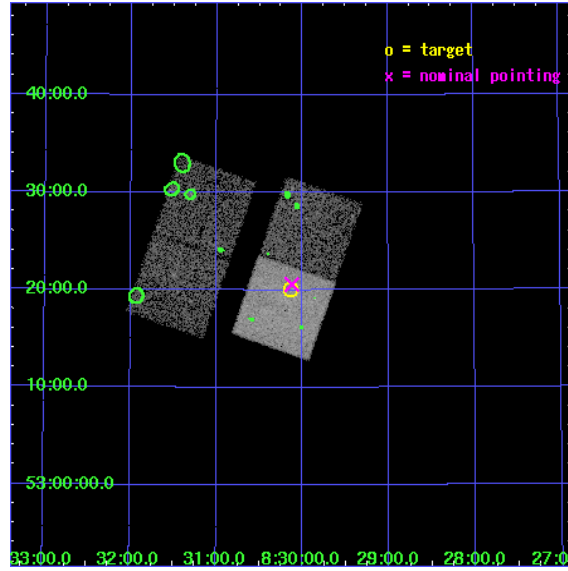
L2 Processing Date : Apr 8 2006

Contents

1	Front	2
2	OBI	3
2.1	OBI	3
2.1.1	Images	3
2.1.2	Bias	3
2.1.3	Parameters	4
2.1.4	Events	4
2.2	Compared Parameters	5
2.3	Aspect	6
2.4	Star Slots	9
2.4.1	Slot 3	9
2.4.2	Slot 4	10
2.4.3	Slot 5	11
2.4.4	Slot 6	12
2.4.5	Slot 7	13
2.5	FID Slots	14
2.5.1	Slot 0	14
2.5.2	Slot 1	15
2.5.3	Slot 2	16
3	Point Sources	17
A	Summary	18
A.1	Status	18
A.2	Comments	18

1 Front

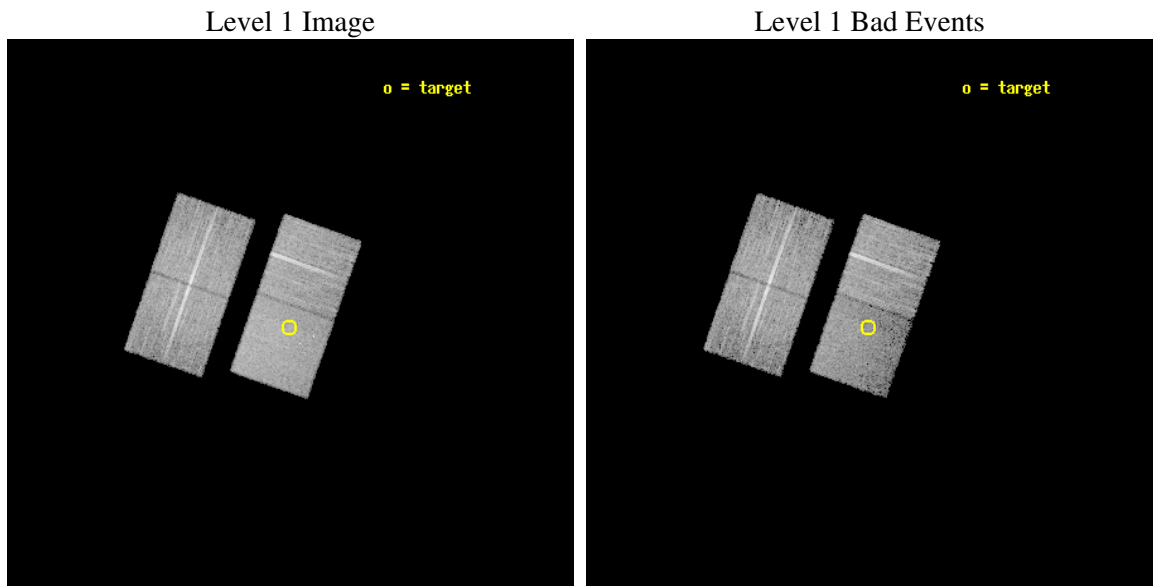
seq_num	701079
obs_id	5656
title	The Spectral Energy Distribution and Fe II Emission in Intermediate-Redshift Narrow-line Seyfert 1 Galaxies
observer	PROF. KAREN LEIGHLY
object	SDSS J083007.99+532000.9
dtcycle	0
cycle	P
ra_targ	127.533333
dec_targ	53.333583
ra_nom	127.530663905
dec_nom	53.343124572282
roll_nom	109.26682037229
revision	2
ontime	11761.399977386
livetime	11607.728628065
ontime2	11761.399977386
ontime3	11758.258987129
ontime6	11761.399977386
ontime7	11761.399977386
l2events	52026



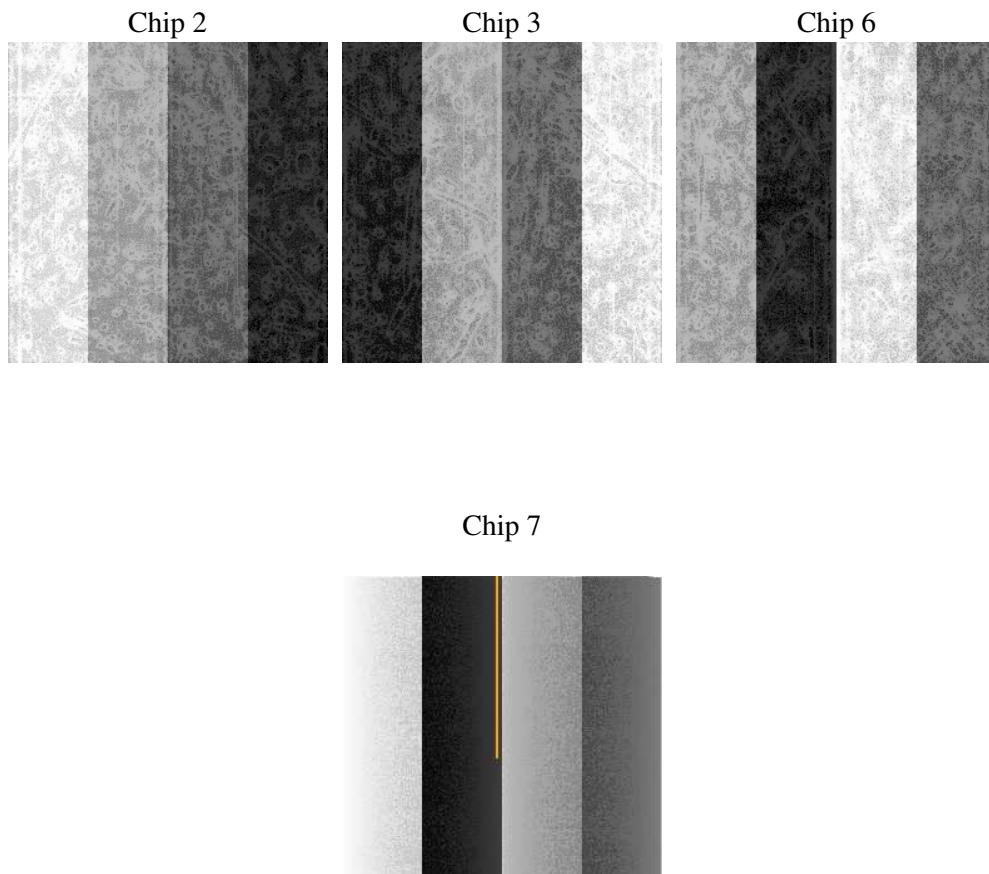
2 OBI

2.1 OBI

2.1.1 Images



2.1.2 Bias



2.1.3 Parameters

obi_num	0
ascdsver	7.6.7.1
caldbver	3.2.1
date	2006-04-08T18:06:31
revision	2

sched_exp_time	11588.840000
ontime	13101.165459603
ontime2	13104.306479663
ontime3	13098.024469346
ontime6	13101.165459603
ontime7	13101.165459603
l1events	349507

2.1.4 Events

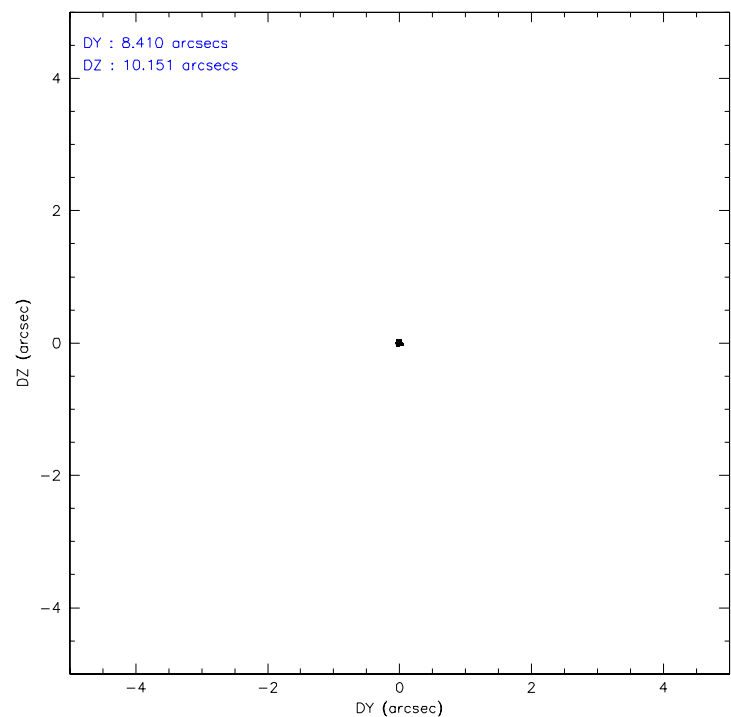
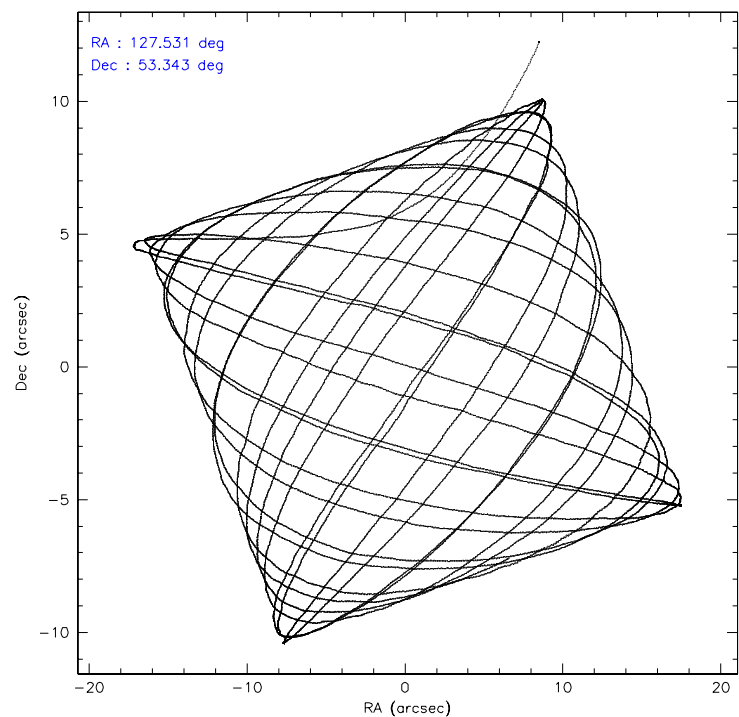
	ccd 2	ccd 3	ccd 6	ccd 7
level 1 events	86980	81856	88712	91959
rejected events	80050	75183	80951	57123
rejected %	92%	91%	91%	62%

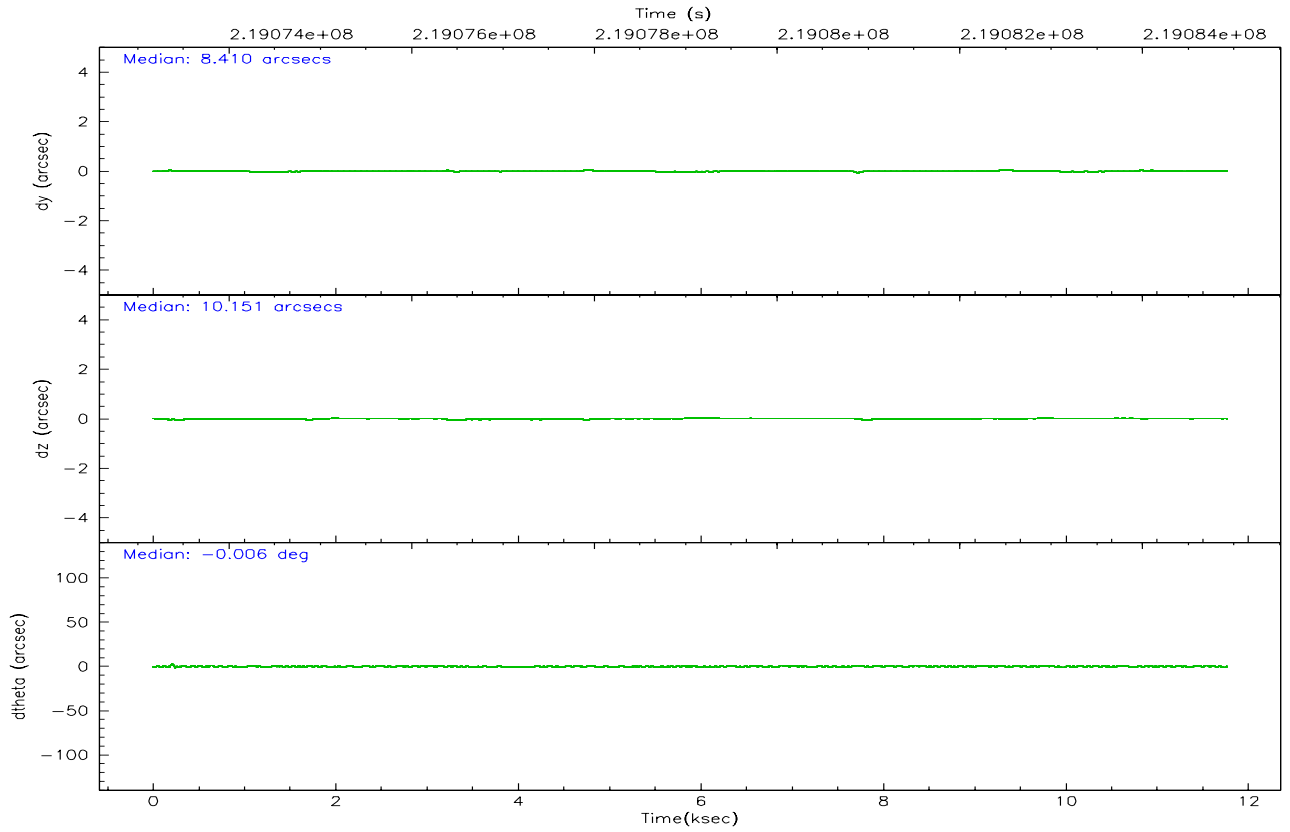
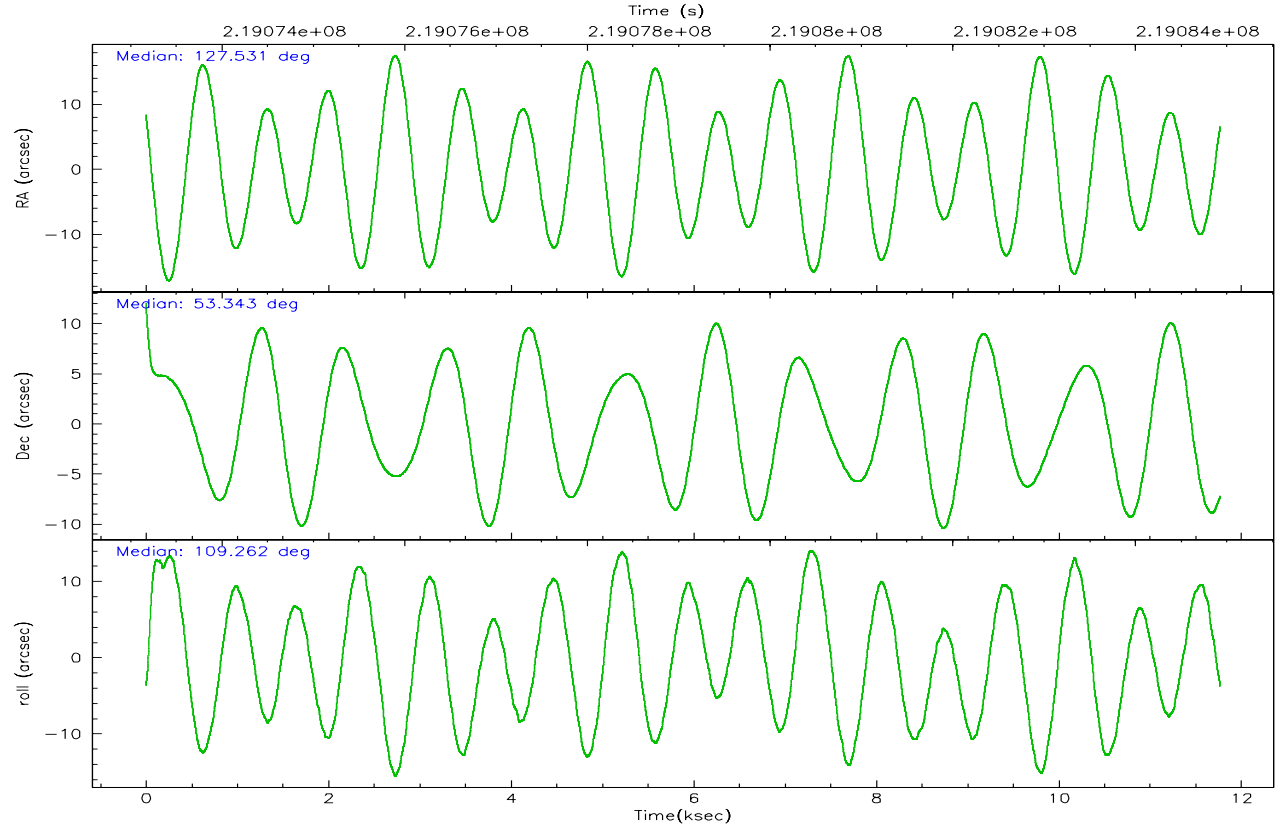
	ccd 2	ccd 3	ccd 6	ccd 7
grade 0 events	2827	2580	3121	2406
	3%	3%	3%	2%
grade 1 events	33	39	24	44
	0%	0%	0%	0%
grade 2 events	1768	1555	1788	9511
	2%	1%	2%	10%
grade 3 events	871	877	964	2217
	1%	1%	1%	2%
grade 4 events	899	908	938	2219
	1%	1%	1%	2%
grade 5 events	2752	3257	3268	6958
	3%	3%	3%	7%
grade 6 events	1423	1522	1830	22343
	1%	1%	2%	24%
grade 7 events	76407	71118	76779	46261
	87%	86%	86%	50%

2.2 Compared Parameters

Parameter	Planned	Actual	Parameter	Planned	Actual
Instrument	ACIS	ACIS	Obspar format version number	6	6
Detector	ACIS-2367	ACIS-2367	Obspar file type	PREDICTED	ACTUAL
Grating	NONE	NONE	Obspar update status	NONE	UPDATED
Data mode	VFAINT	VFAINT	On-chip summing requested	N	N
Observation mode	POINTING	POINTING	Subarray requested	NONE	NONE
Pointing RA	127.565695	127.5306639050007	Alternating exposures requested	N	N
Pointing Dec	53.325628	53.34312457228202	Primary exposure time	0.000000	3.1
Pointing Roll	109.082098	109.2668203722905			
SIM focus pos (mm)	-0.684267	-0.6828225247311905			
SIM defocus (mm)	0	0.001444936568705701			
SIM translation stage pos (mm)	-190.132523	-190.1400660498719			
SIM translation stage offset (mm)	0	0.00754346686406393			
Observation start time	219073345.184000	219071746.59105			
Observation start date	2004-12-10T13:41:21	2004-12-10T13:15:46			
Observation end time	219084934.184000	219085158.71665			
Observation end date	2004-12-10T16:54:30	2004-12-10T16:59:18			
Read mode	TIMED	TIMED			

2.3 Aspect



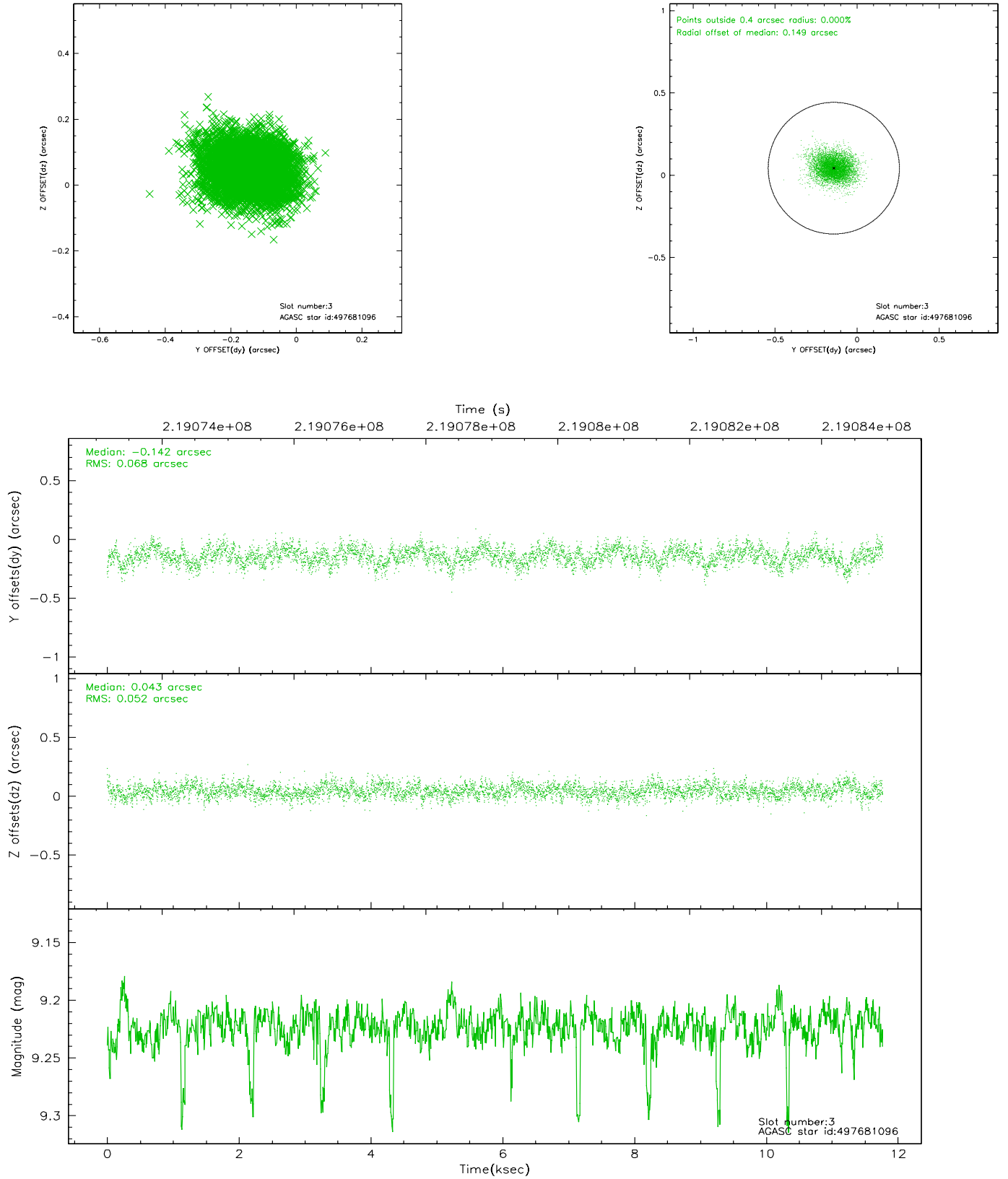


Slot Statistics

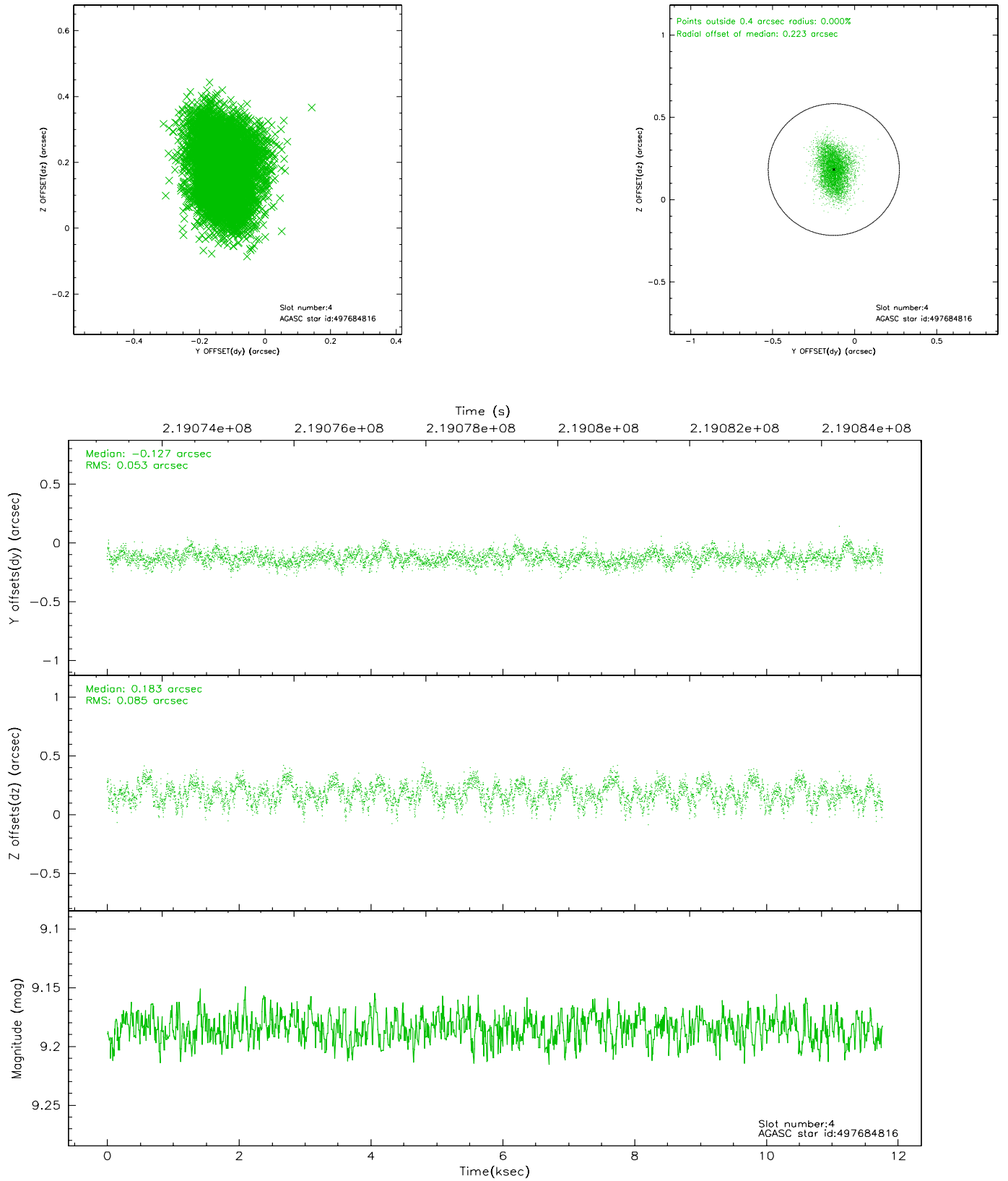
slot	status	id	mag	n_pts	med_dy	med_dz	dr1	dr2	ra	dec	mean_y	mean_z
0	FID	ACIS-S-2	7.11	2871	-0.031	-0.002	0.006	0.010	0.000000	0.000000	-761.18	-1731.42
1	FID	ACIS-S-4	7.21	2871	0.088	0.016	0.005	0.009	0.000000	0.000000	2151.97	176.71
2	FID	ACIS-S-5	7.23	2870	-0.088	-0.005	0.006	0.010	0.000000	0.000000	-1813.58	170.74
3	GUIDE	497681096	9.22	5713	-0.142	0.043	0.090	0.150	127.351200	53.942666	2248.60	-296.65
4	GUIDE	497684816	9.18	5739	-0.127	0.183	0.108	0.172	128.442903	53.709017	704.86	-2221.19
5	GUIDE	497690224	7.86	5742	0.132	0.014	0.062	0.097	127.850163	53.122165	-891.59	-342.20
6	GUIDE	497691032	9.37	5737	0.164	0.029	0.132	0.206	128.584665	53.177597	-1207.50	-1908.44
7	GUIDE	497694416	7.00	5741	-0.027	-0.270	0.057	0.088	126.980243	53.457235	862.70	1028.97

2.4 Star Slots

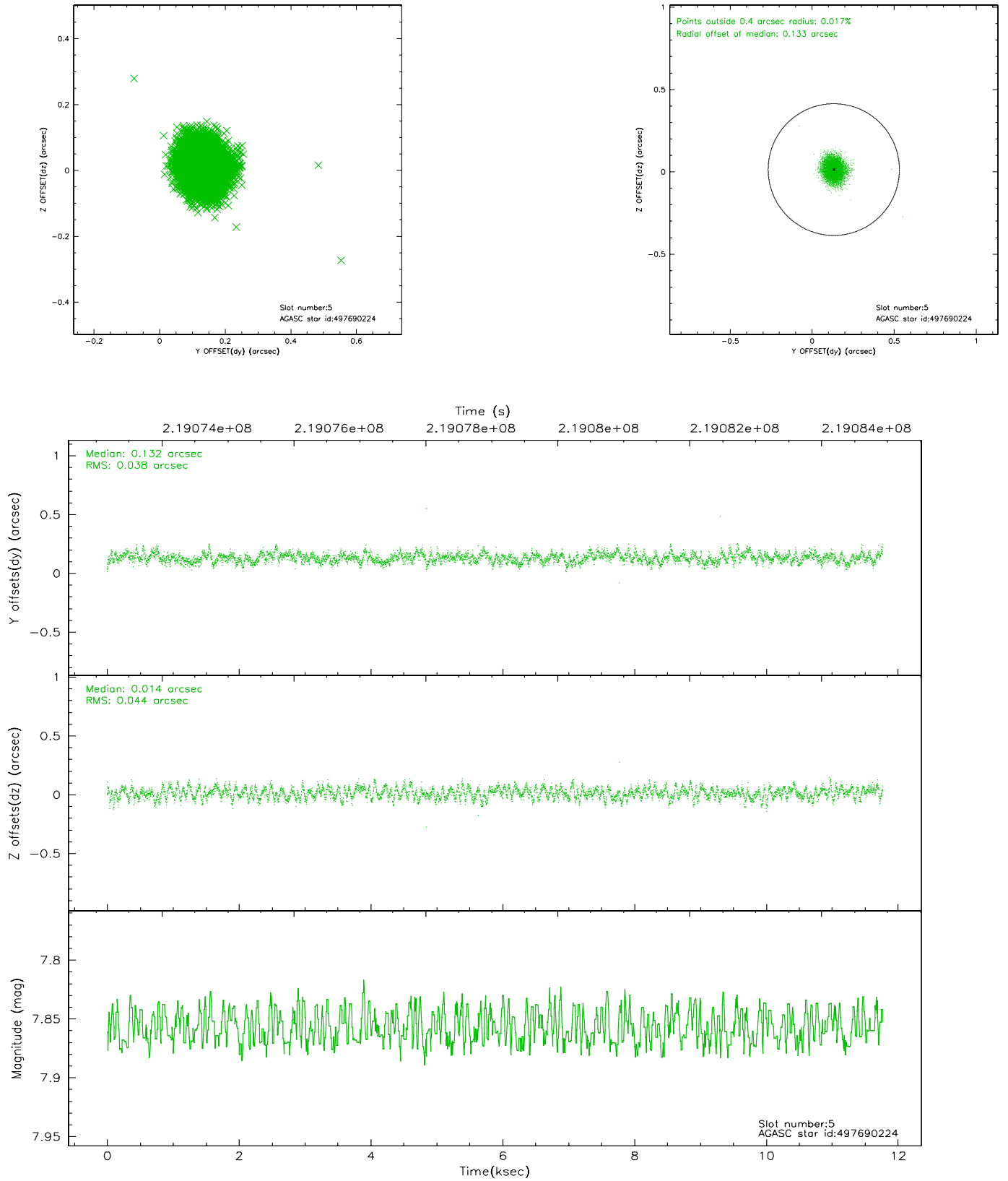
2.4.1 Slot 3



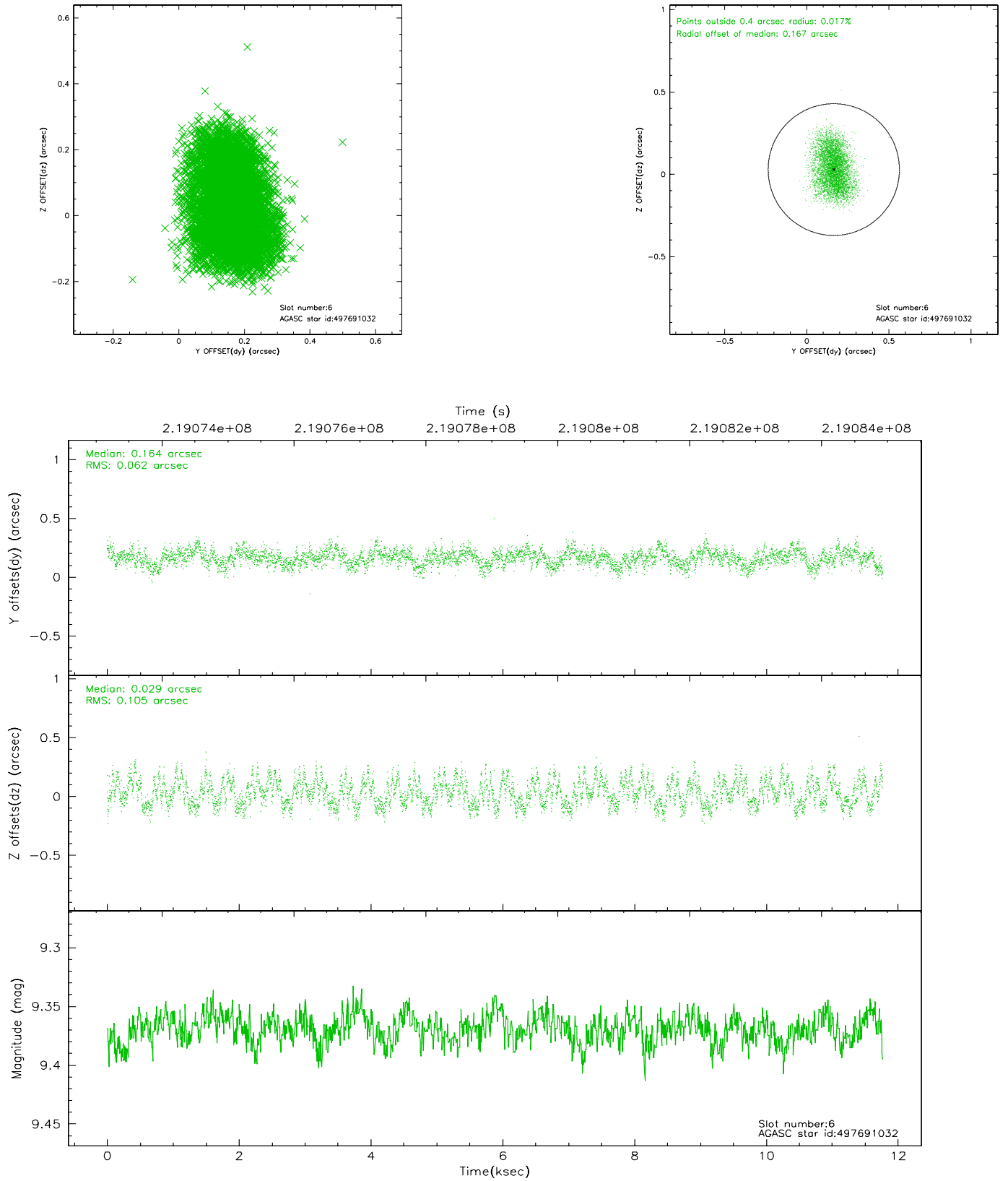
2.4.2 Slot 4



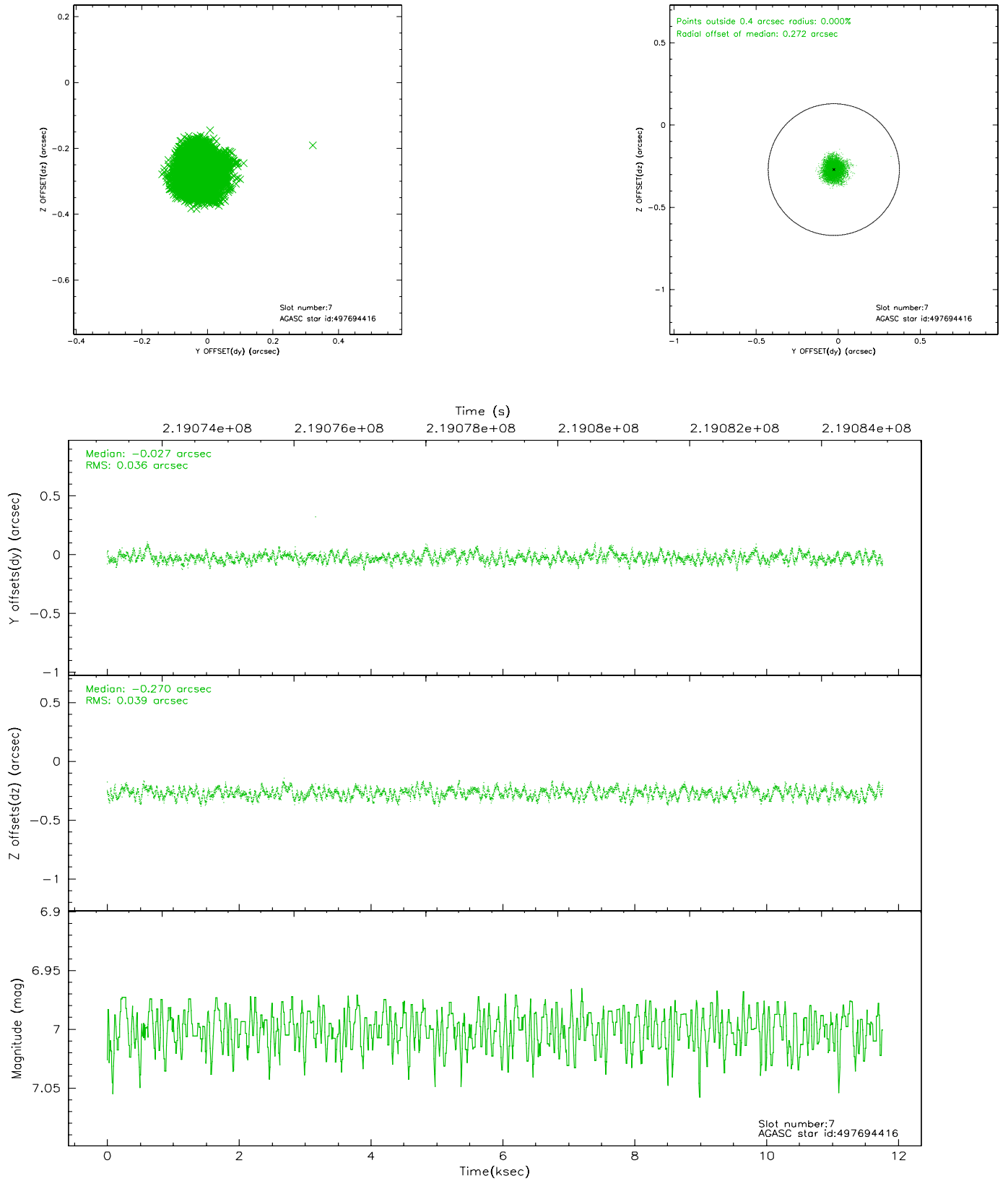
2.4.3 Slot 5



2.4.4 Slot 6

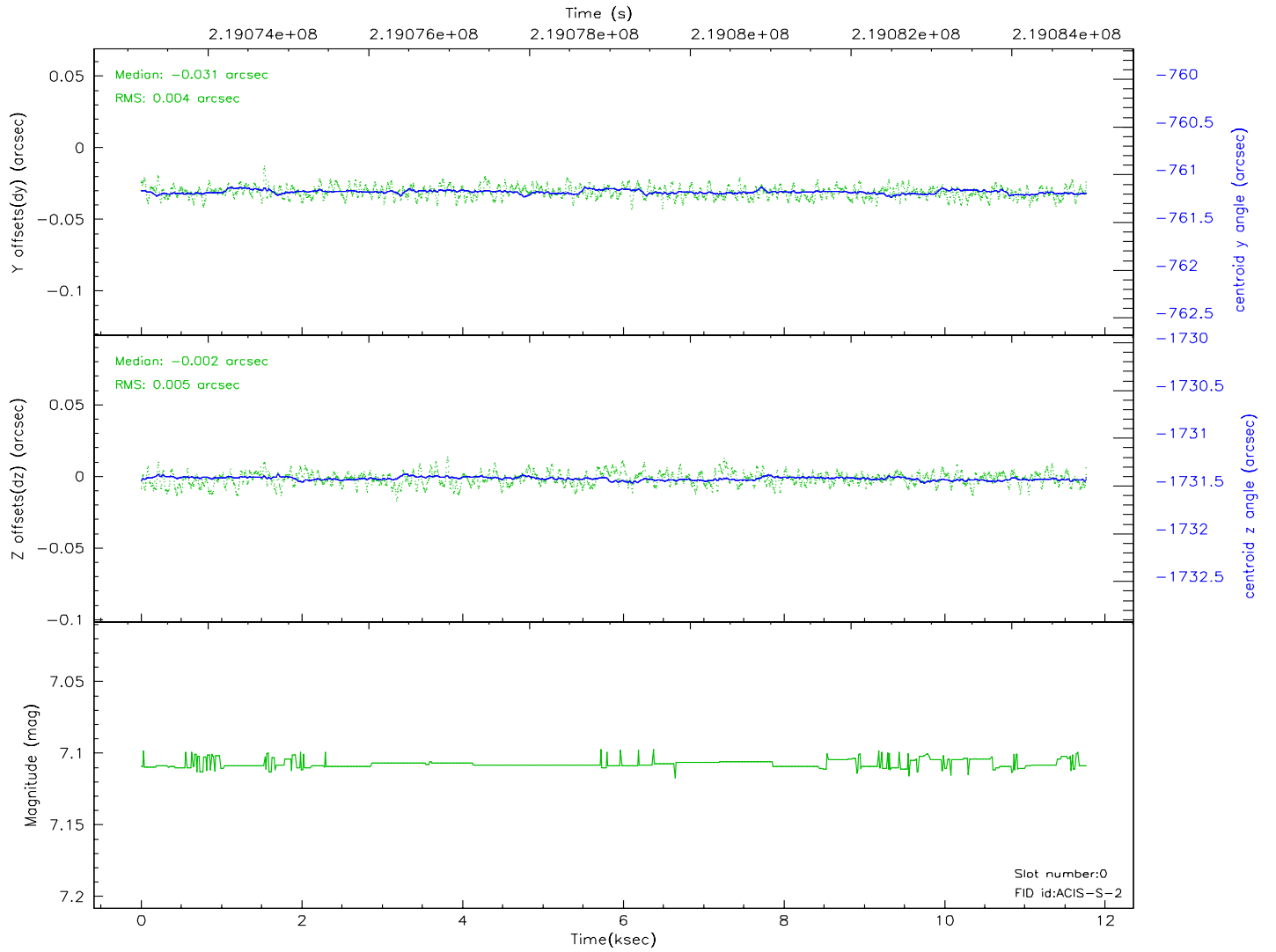
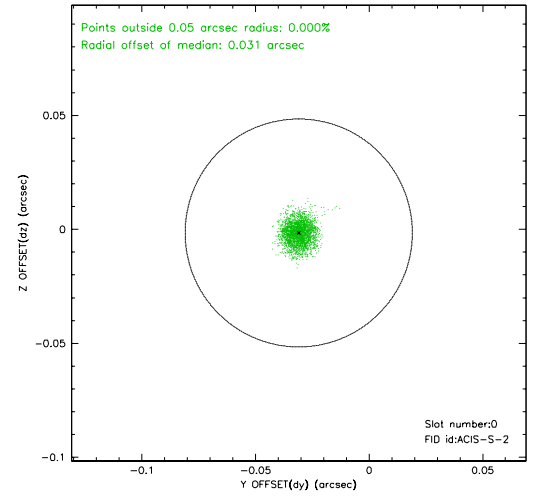
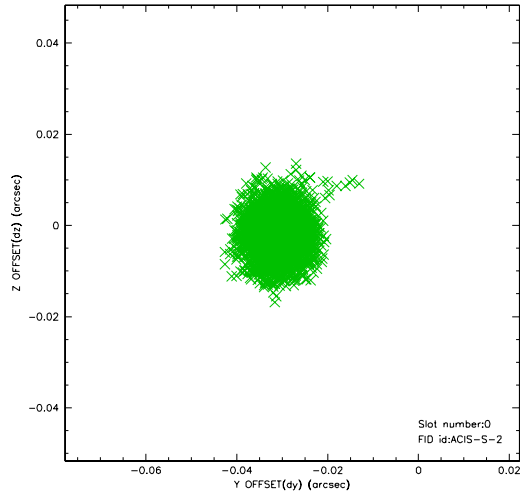


2.4.5 Slot 7

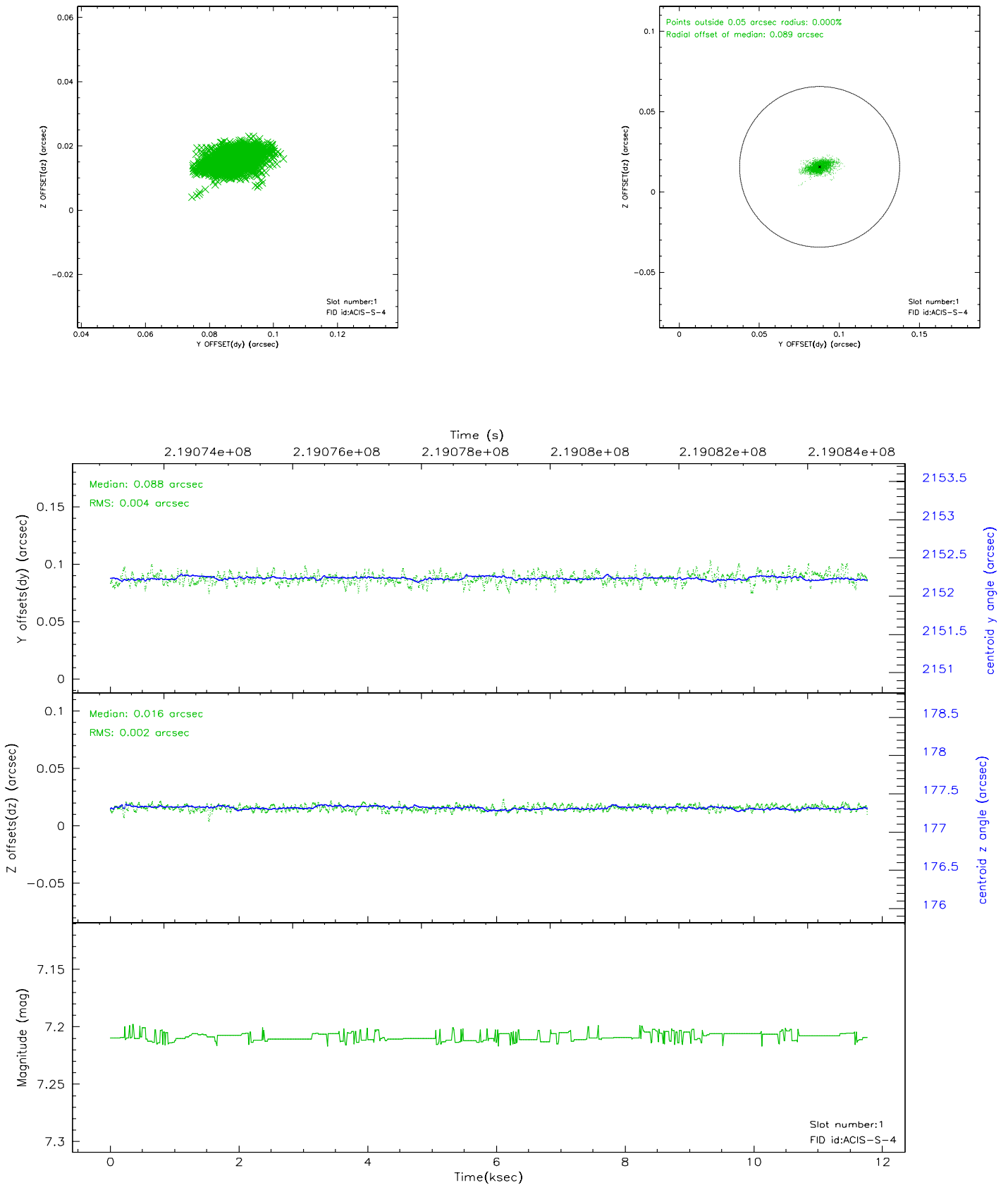


2.5 FID Slots

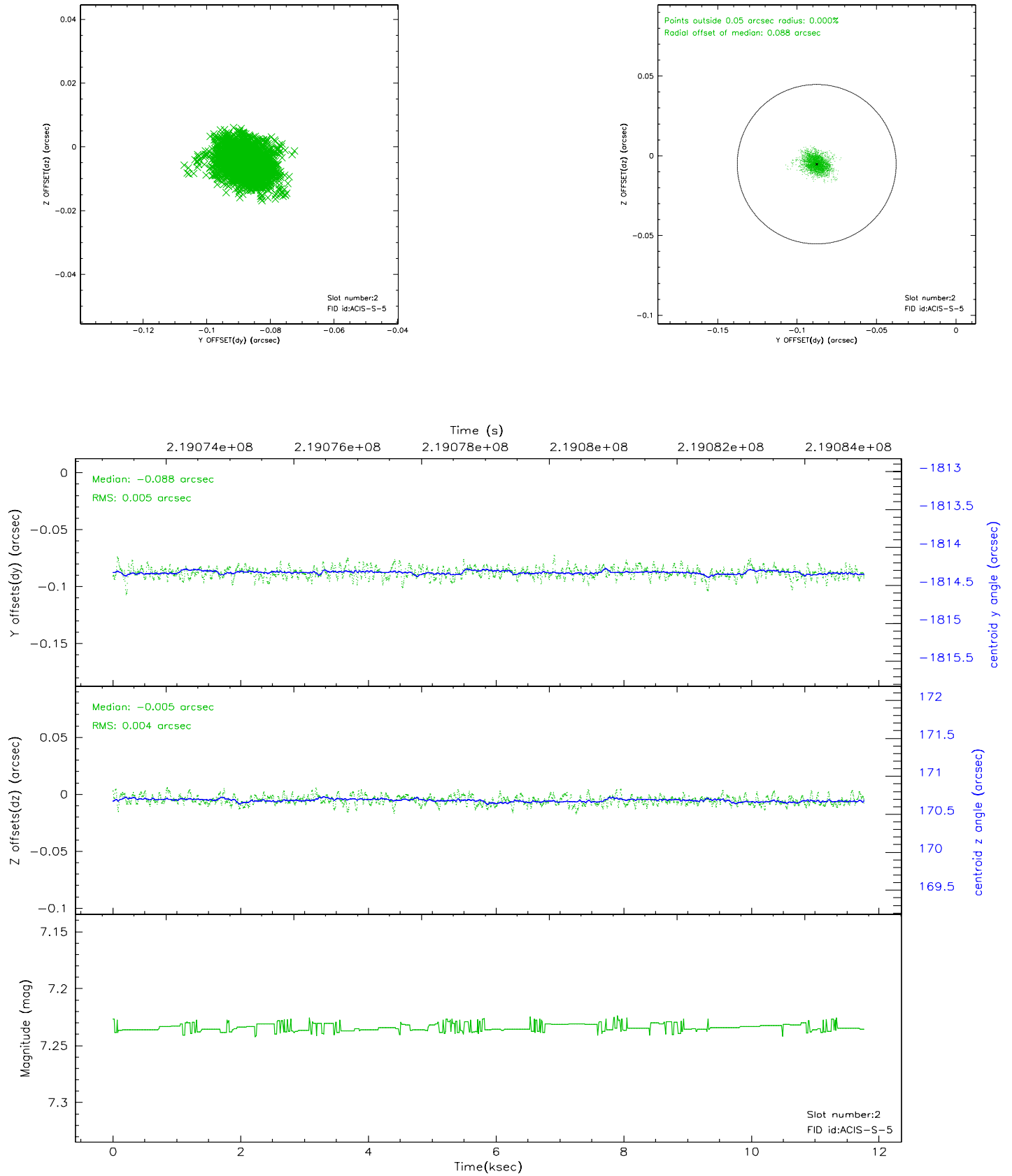
2.5.1 Slot 0



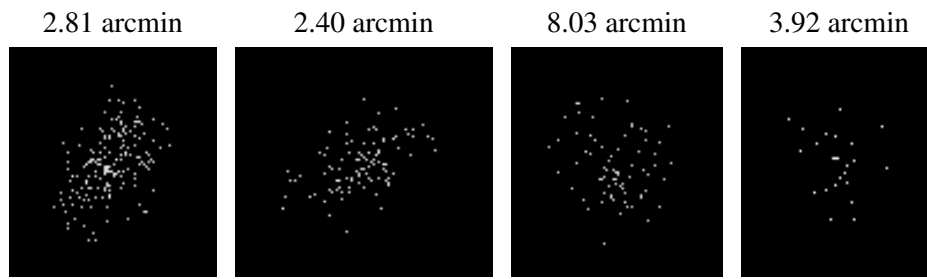
2.5.2 Slot 1



2.5.3 Slot 2



3 Point Sources



A Summary

A.1 Status

V&V Scientist	Jen Lauer
V&V Date (YYYY-MM-DD)	2006.04.10
V&V Edition	1
V&V Disposition and Status	OK
V&V Charge Time	11.76139

A.2 Comments