

V&V Reference Report

L2 ASCDS Version : 8.5.1.1

Observation 5642 - L2 Version 3
Chandra X-Ray Center

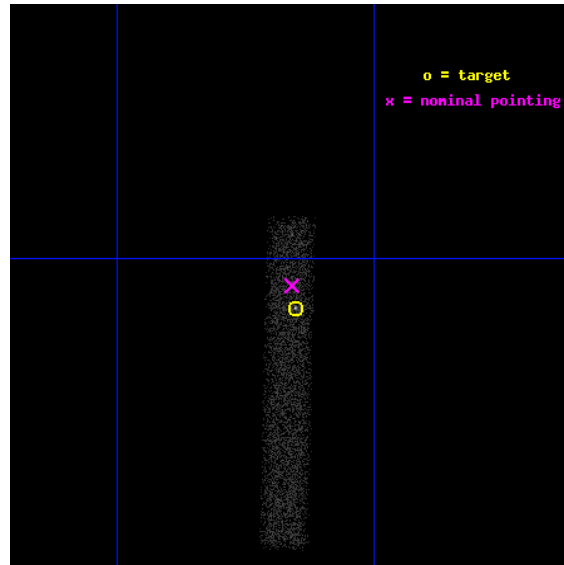
L2 Processing Date : Dec 22 2012

Contents

1	Front	2
2	OBI	3
2.1	OBI	3
2.1.1	Images	3
2.1.2	Bias	3
2.1.3	Parameters	4
2.1.4	Events	4
2.2	Compared Parameters	5
2.3	Aspect	6
2.4	Star Slots	9
2.4.1	Slot 3	9
2.4.2	Slot 4	10
2.4.3	Slot 5	11
2.4.4	Slot 6	12
2.4.5	Slot 7	13
2.5	FID Slots	14
2.5.1	Slot 0	14
2.5.2	Slot 1	15
2.5.3	Slot 2	16
A	Summary	17
A.1	Status	17
A.2	Comments	17

1 Front

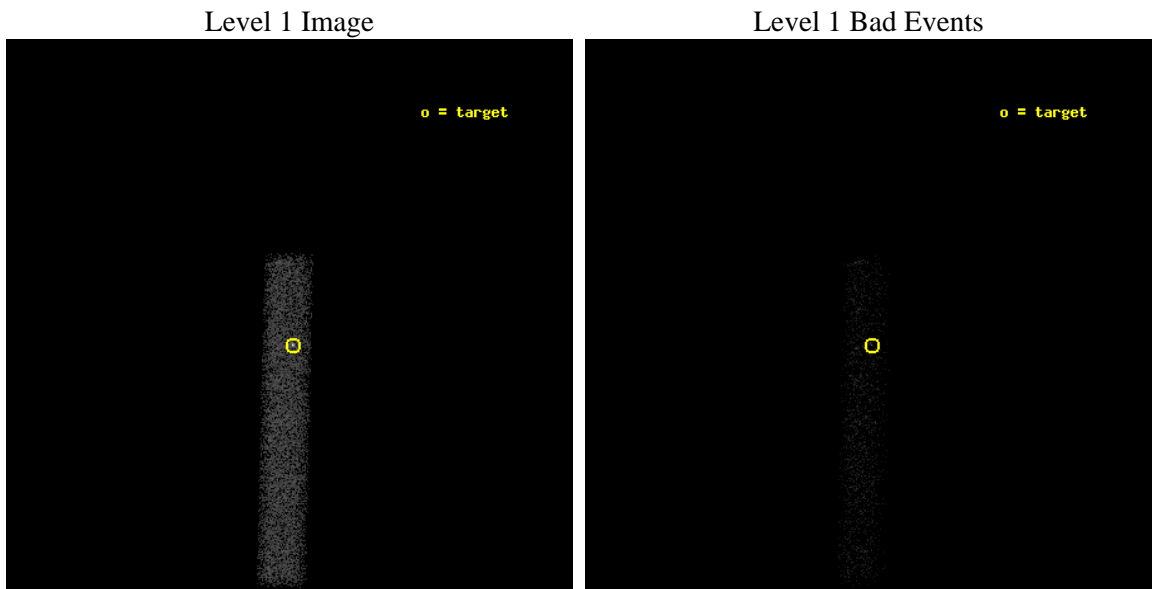
seq_num	701065	Sequence number
obs_id	5642	Observation id
title	The Extended X-ray Structure of a New Population of Blazars	Propos
observer	Dr. Hermine Landt	Principal investigator
object	RGBJ2256+2618	Source name
dtcycle	0	
cycle	P	events from which exps? Prim/Second/Both
ra_targ	344.163333	Observer's specified target RA [deg]
dec_targ	26.312111	Observer's specified target Dec [deg]
ra_nom	344.16494544436	Nominal RA [deg]
dec_nom	26.321650878298	Nominal Dec [deg]
roll_nom	91.282162385355	Nominal Roll [deg]
revision	3	Processing version of data
ontime	9853.6001468003	Sum of GTIs [s]
livetime	8936.6952174862	Livetime [s]
ontime7	9853.6001468003	Sum of GTIs [s]
l2events	8152	Number of level 2 events



2 OBI

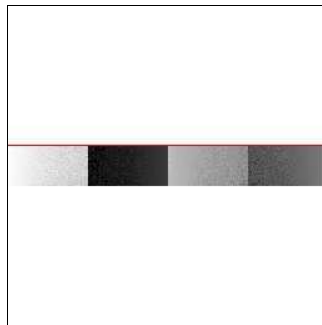
2.1 OBI

2.1.1 Images



2.1.2 Bias

Chip 7



2.1.3 Parameters

obi_num	0	Obi number	sched_exp_time	10000.000000	[s] Scheduled observation exposure time
ascdsver	8.5.1.1	Processing system revision	ontime	9853.6001468003	Sum of GTIs [s]
caldsver	4.5.5	 	ontime7	9853.6001468003	Sum of GTIs [s]
date	2012-12-23T02:39:37	Date and time of file creation	l1events	15721	Number of level 1 events
revision	3	Processing version of data			

2.1.4 Events

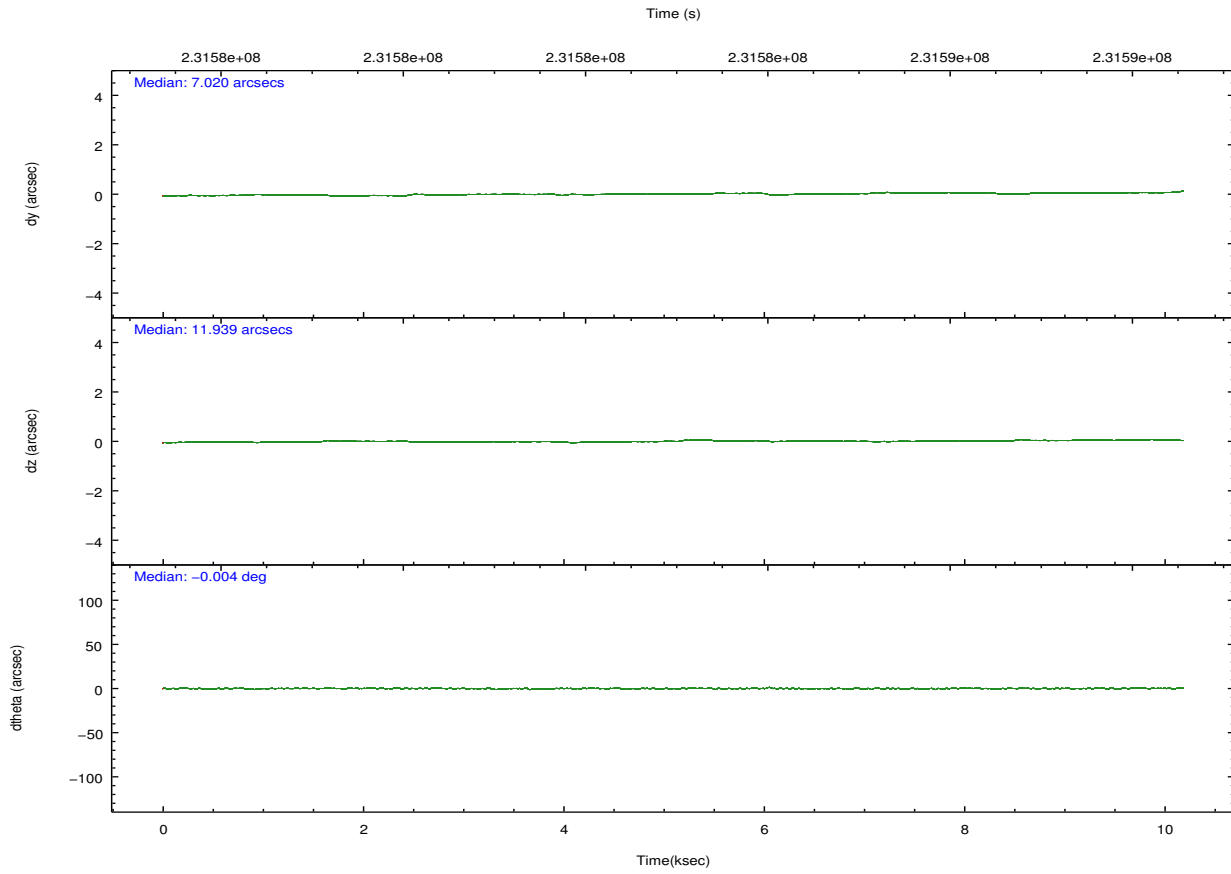
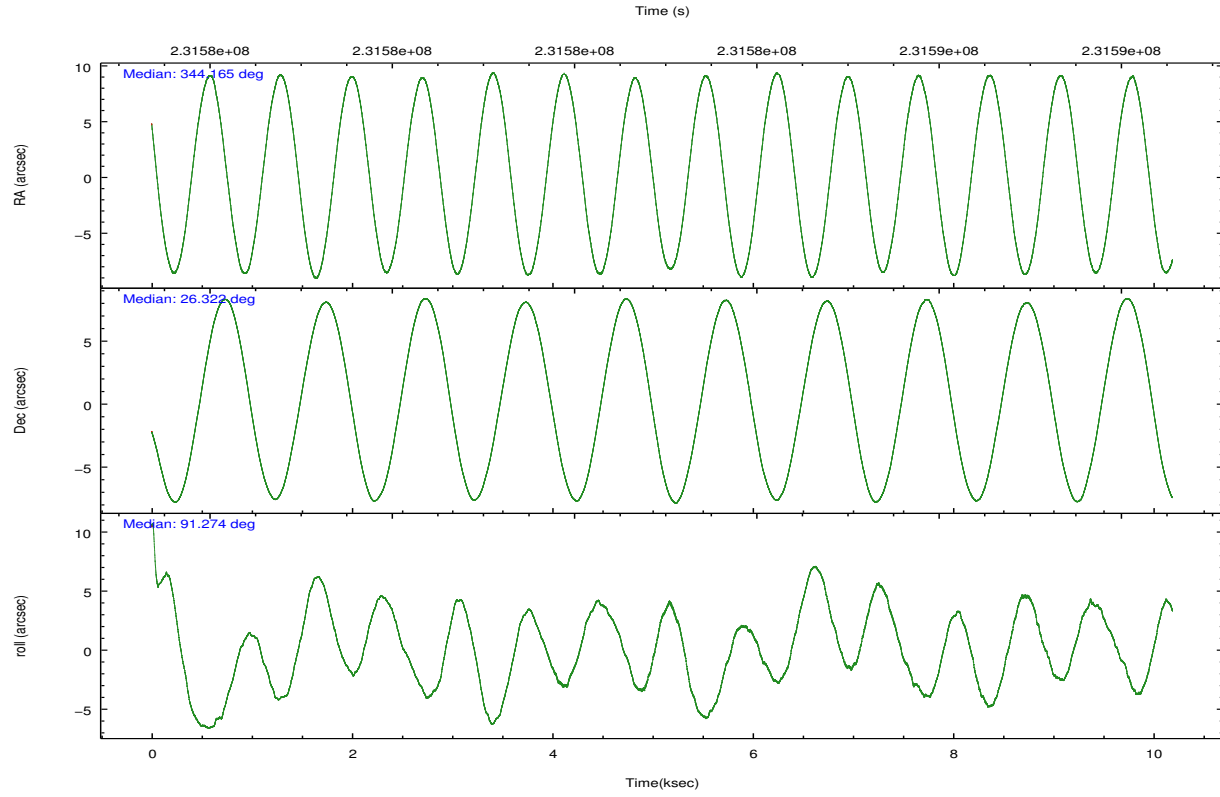
	ccd 7
level 1 events	15721
rejected events	7324
rejected %	46%

	ccd 7
grade 0 events	1285
	8%
grade 1 events	24
	0%
grade 2 events	1700
	10%
grade 3 events	1067
	6%
grade 4 events	1037
	6%
grade 5 events	1278
	8%
grade 6 events	3308
	21%
grade 7 events	6022
	38%

2.2 Compared Parameters

Parameter	Planned	Actual	Parameter	Planned	Actual
Instrument	ACIS	ACIS	Obspar format version number	7	7
Detector	ACIS-7	ACIS-7	Obspar file type	PREDICTED	ACTUAL
Grating	NONE	NONE	Obspar update status	NONE	UPDATED
Data mode	FAINT	FAINT	Number of optional ACIS chips dropped	0	0
Observation mode	POINTING	POINTING	On-chip summing requested	N	N
[deg] Pointing RA	344.181114	344.1649454443643	Subarray requested	CUSTOM	1/8
[deg] Pointing Dec	26.298590	26.32165087829823	Subarray start row	449	449
[deg] Pointing Roll	91.118362	91.28216238535452	Subarray row count	128	128
[mm] SIM focus pos	-0.684267	-0.6828225247311905	Alternating exposures requested	N	N
[mm] SIM defocus	0	0.001444936568705701	[s] Primary exposure time	0.000000	0.4
[mm] SIM translation stage pos	-190.132523	-190.1400660498719			
[mm] SIM translation stage offset	0	0.00754346686406393			
[s] Observation start time (MET)	231578055.184000	231577511.80707			
Observation start date	2005-05-04T07:13:11	2005-05-04T07:05:11			
[s] Observation end time (MET)	231588055.184000	231589561.70762			
Observation end date	2005-05-04T09:59:51	2005-05-04T10:26:01			
Read mode	TIMED	TIMED			

2.3 Aspect

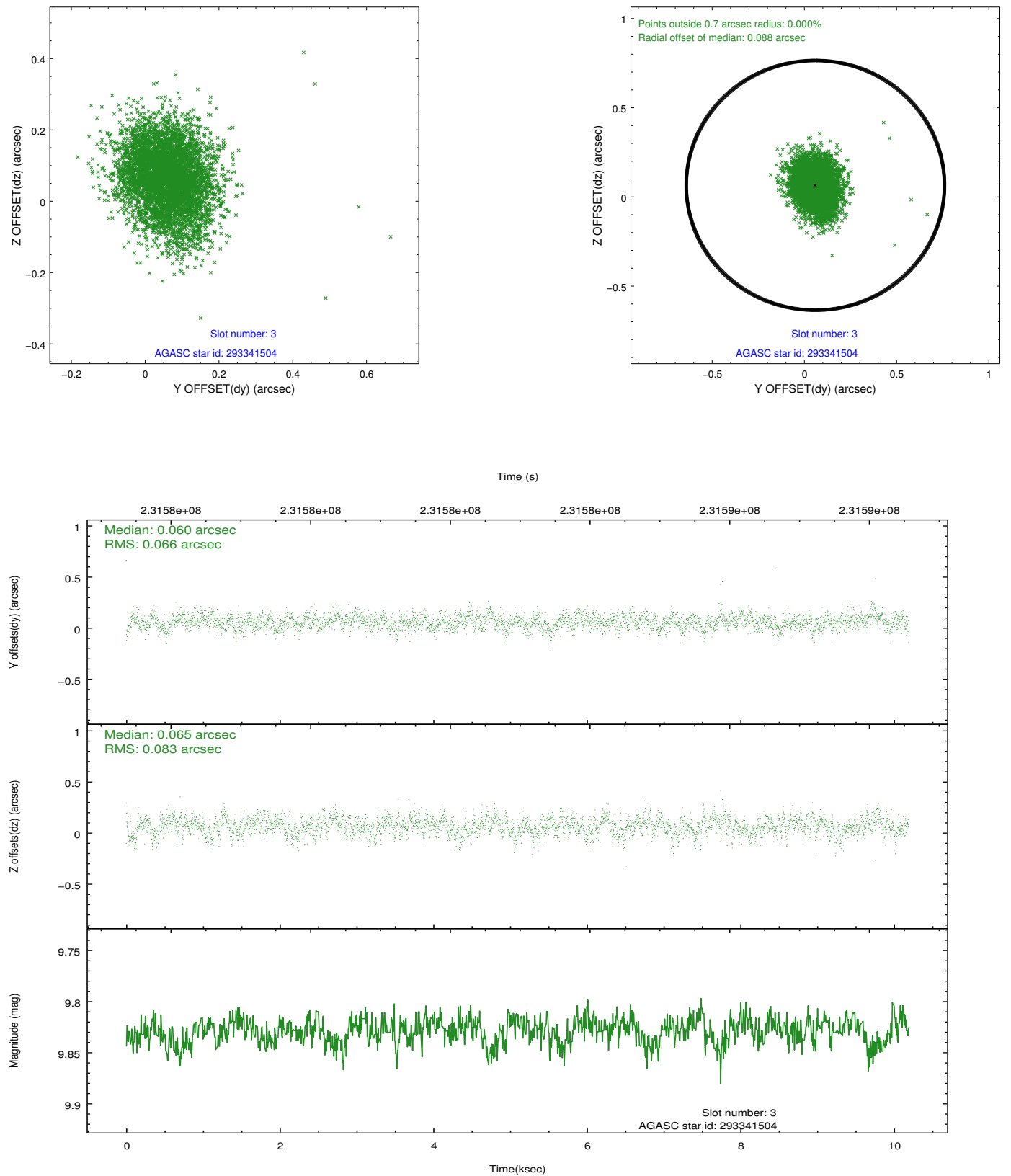


Slot Statistics

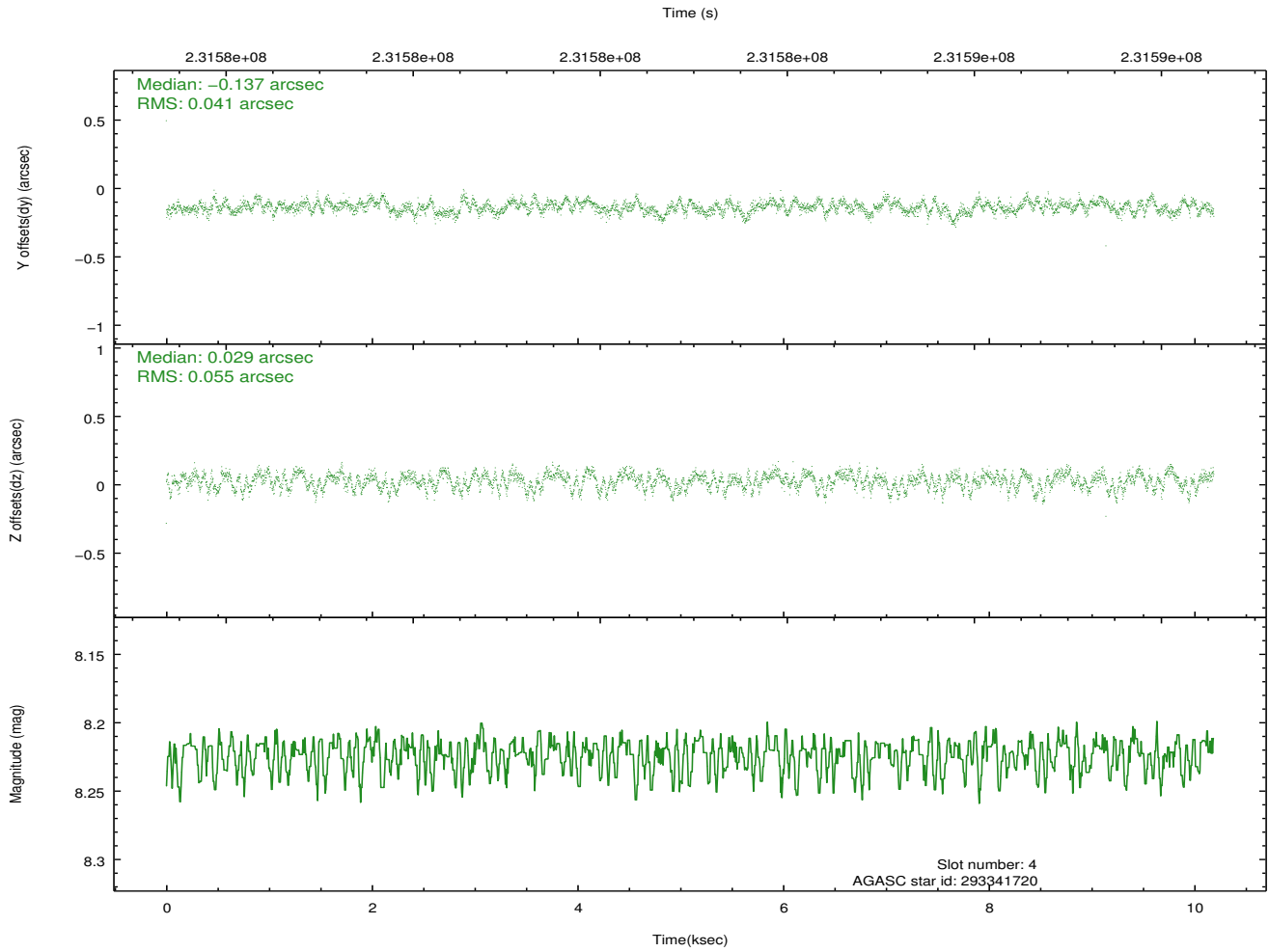
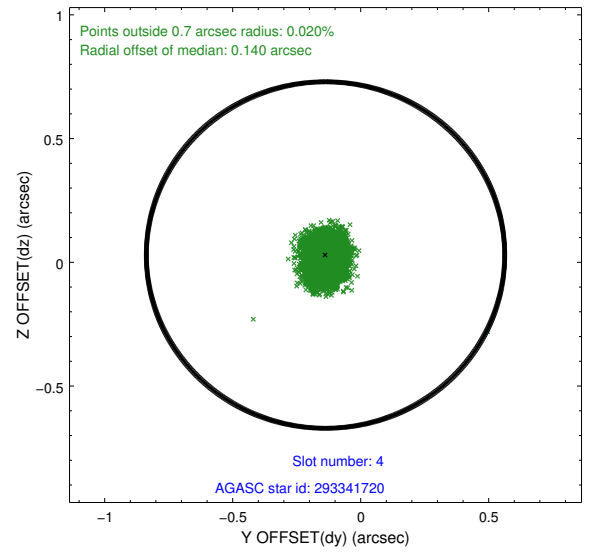
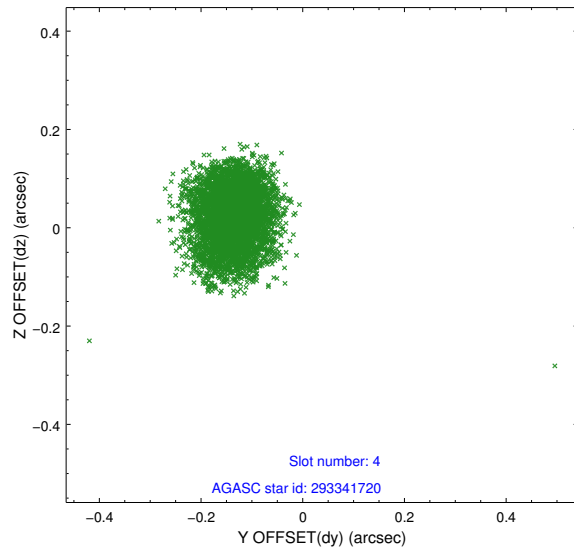
slot	status	id	mag	n_pts	med_dy	med_dz	dr1	dr2	ra	dec	mean_y	mean_z
0	FID	ACIS-S-2	7.09	2486	-0.024	-0.022	0.007	0.012	0.000000	0.000000	-759.80	-1733.26
1	FID	ACIS-S-4	7.20	2486	0.061	0.017	0.006	0.010	0.000000	0.000000	2153.33	174.72
2	FID	ACIS-S-5	7.23	2486	-0.068	0.013	0.007	0.012	0.000000	0.000000	-1812.02	168.98
3	GUIDE	293341504	9.83	4962	0.060	0.065	0.110	0.183	344.676943	26.188884	-422.60	-1594.04
4	GUIDE	293341720	8.22	4970	-0.137	0.029	0.073	0.116	344.937767	25.881433	-1541.70	-2421.57
5	GUIDE	293344536	9.91	4915	0.163	0.146	0.145	0.231	344.218883	26.225581	-264.94	-117.03
6	GUIDE	293351176	8.95	4967	0.020	-0.280	0.087	0.136	343.564038	25.925037	-1300.84	2023.29
7	GUIDE	293875152	8.26	4970	-0.103	0.045	0.057	0.090	344.234190	26.387865	318.02	-176.71

2.4 Star Slots

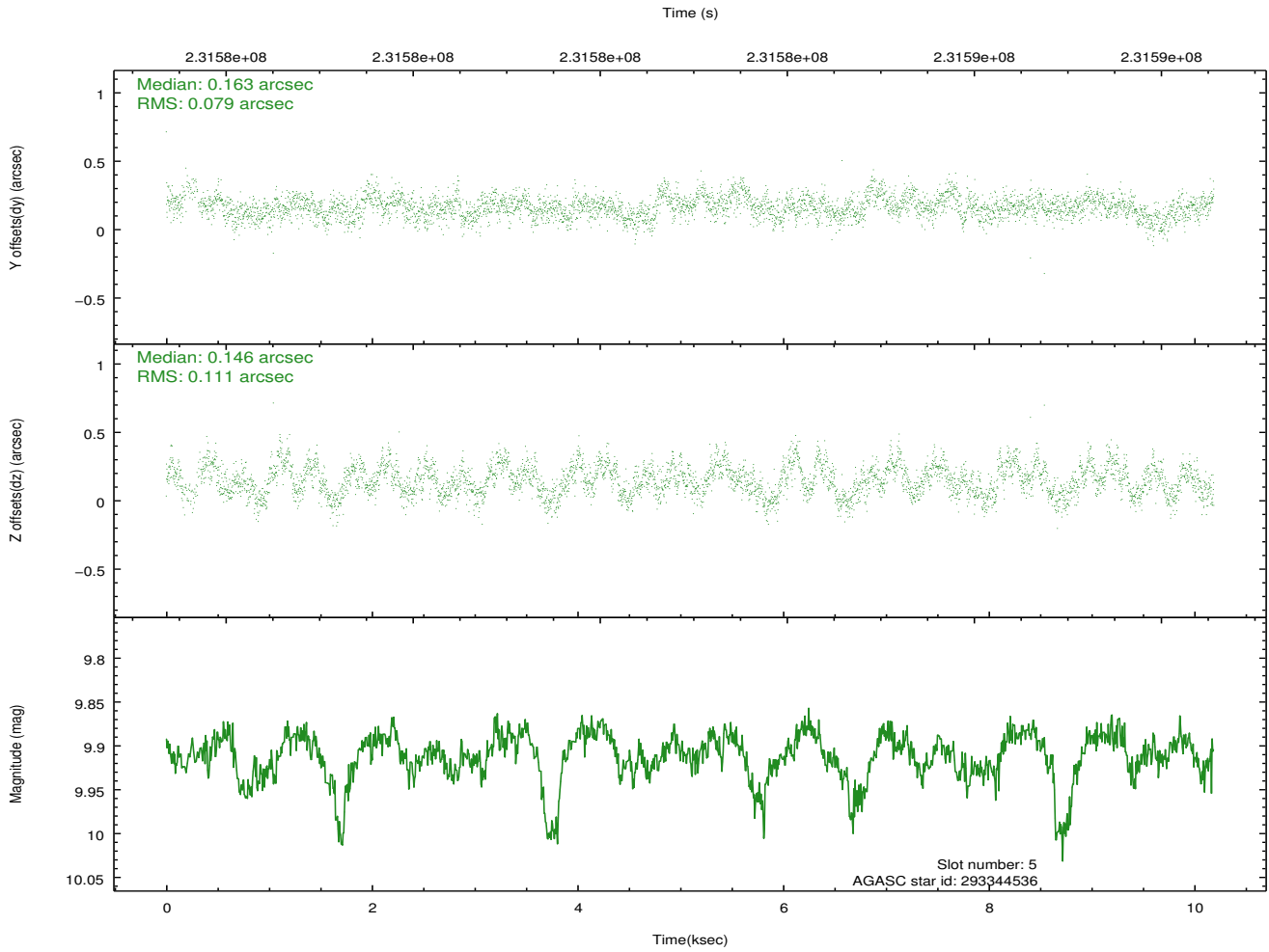
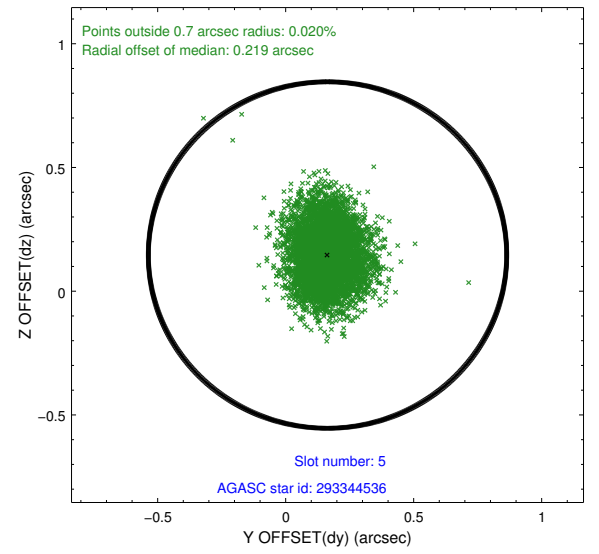
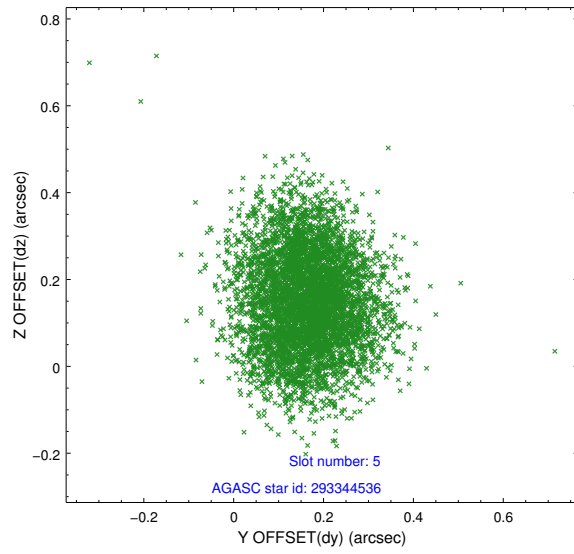
2.4.1 Slot 3



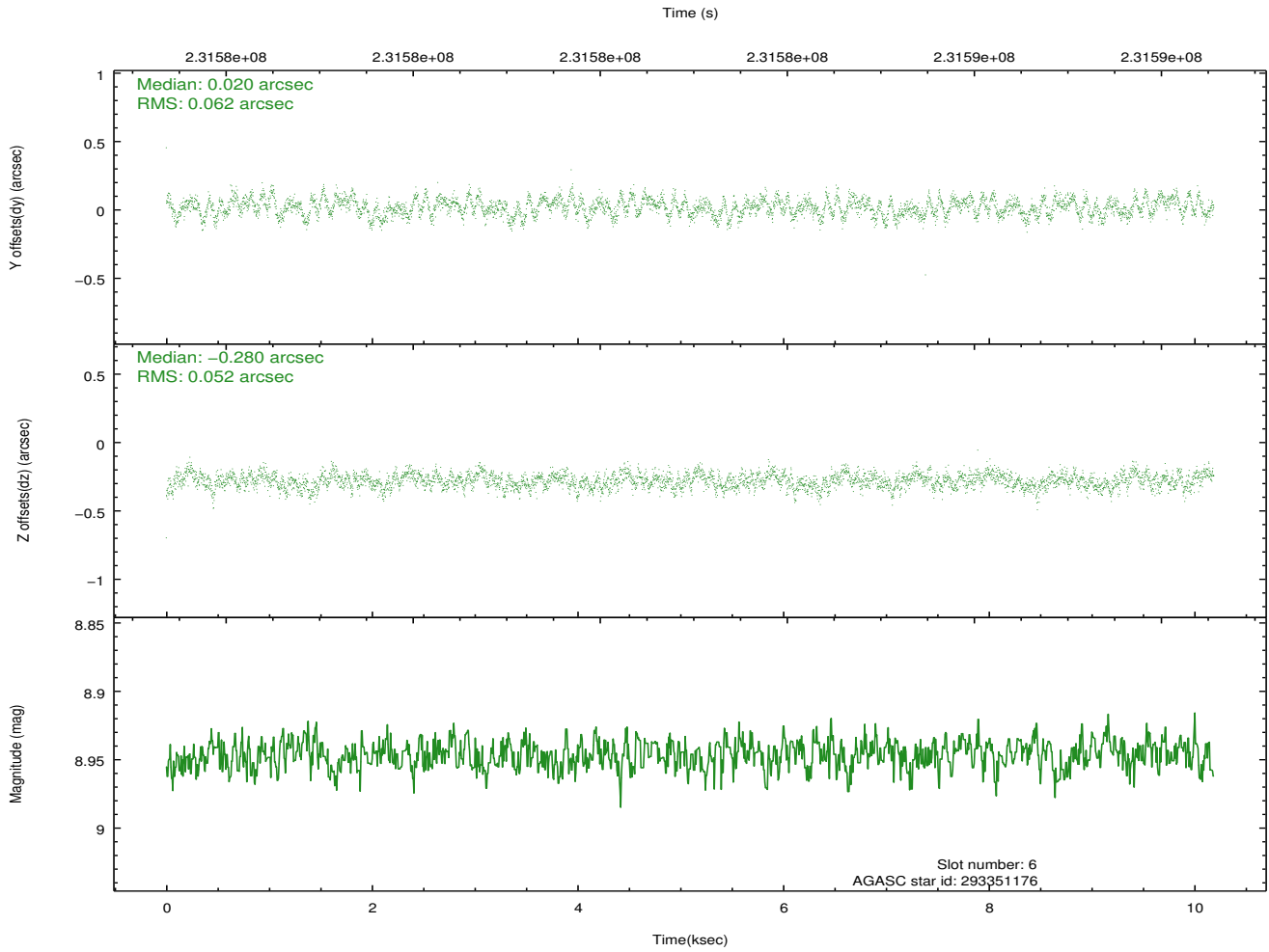
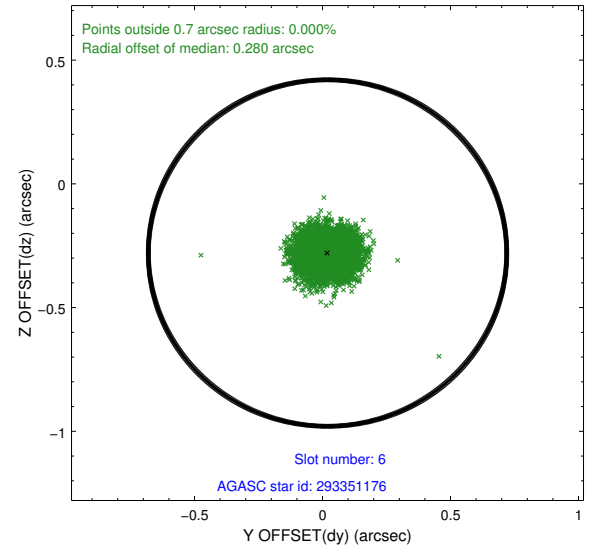
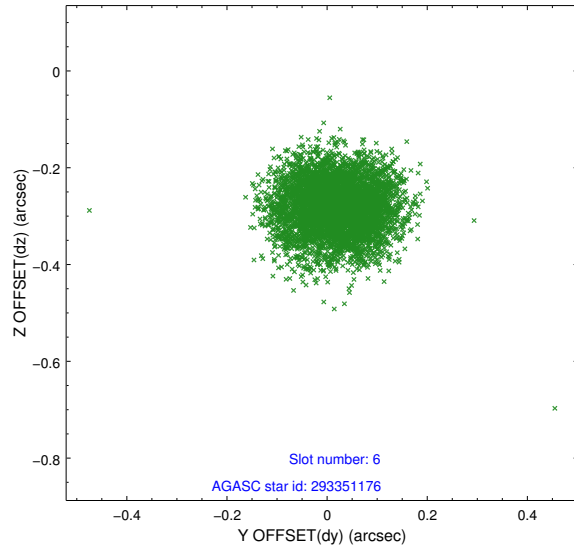
2.4.2 Slot 4



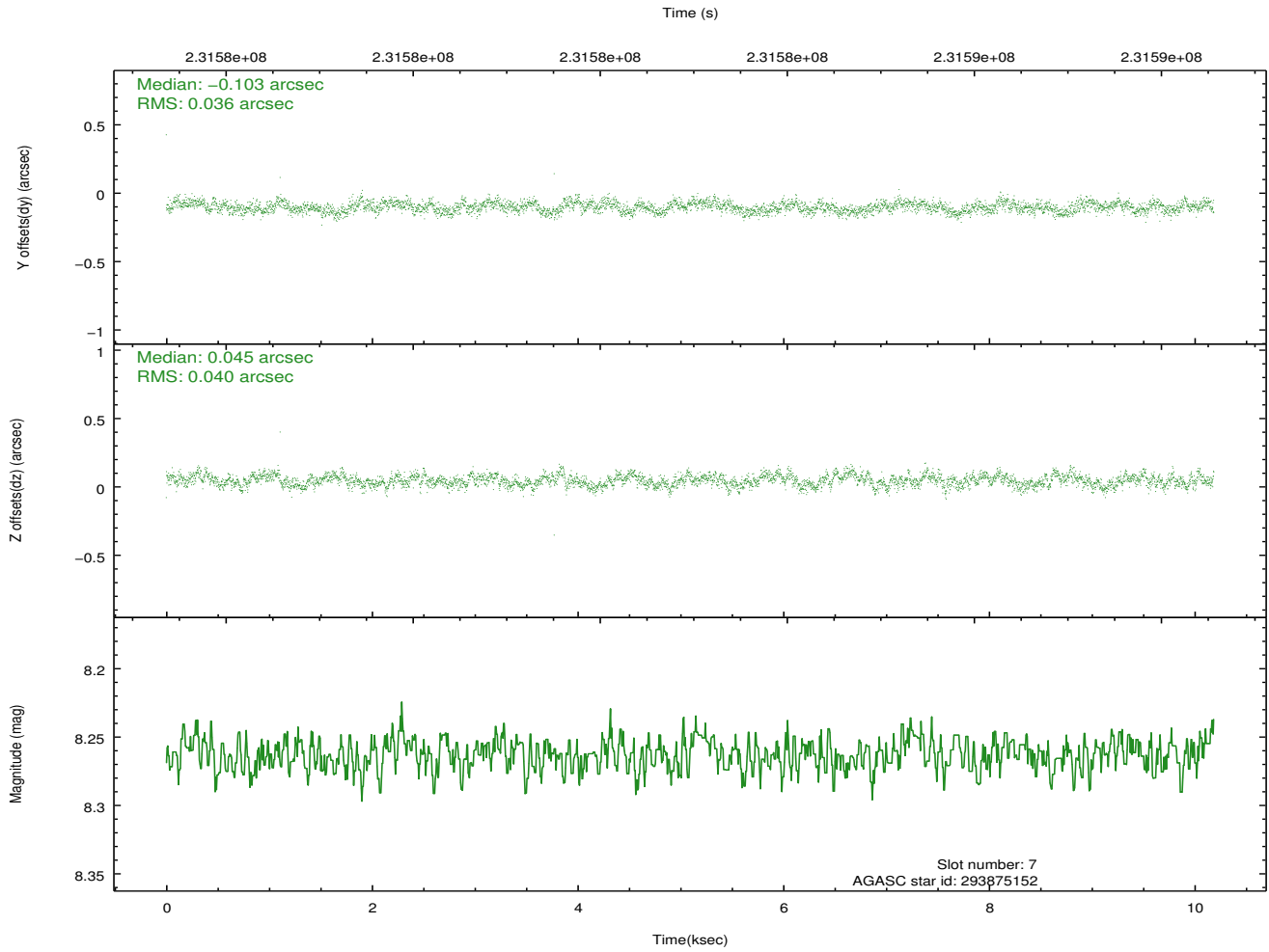
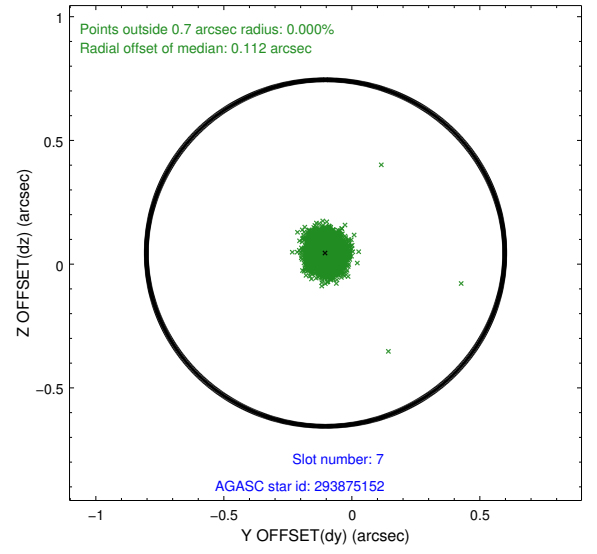
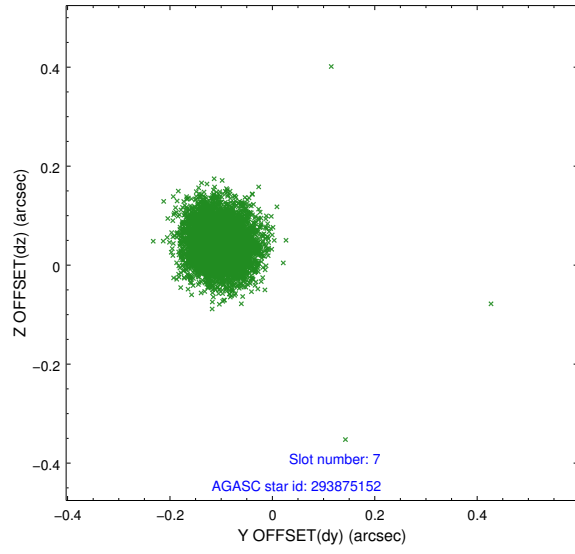
2.4.3 Slot 5



2.4.4 Slot 6

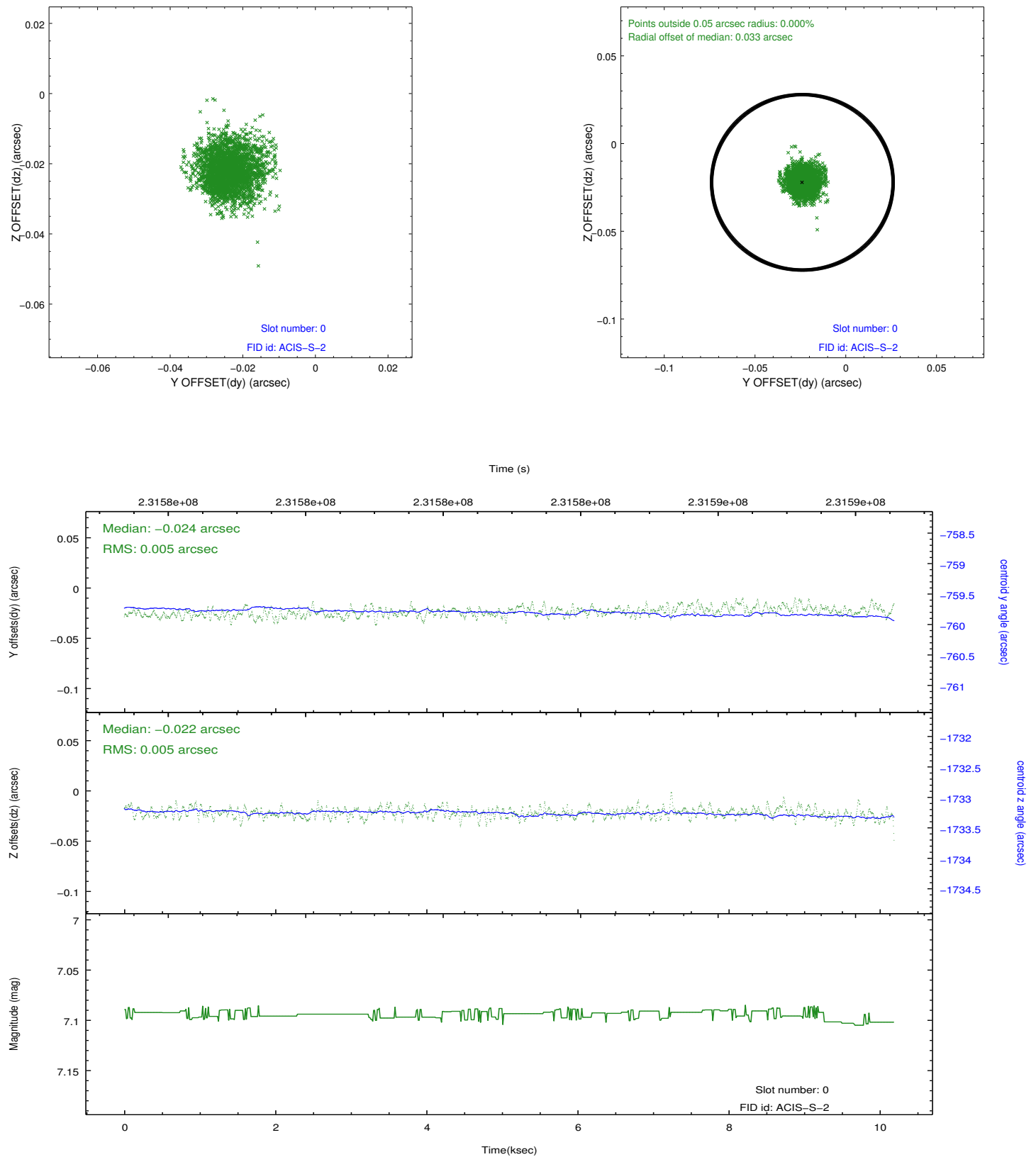


2.4.5 Slot 7

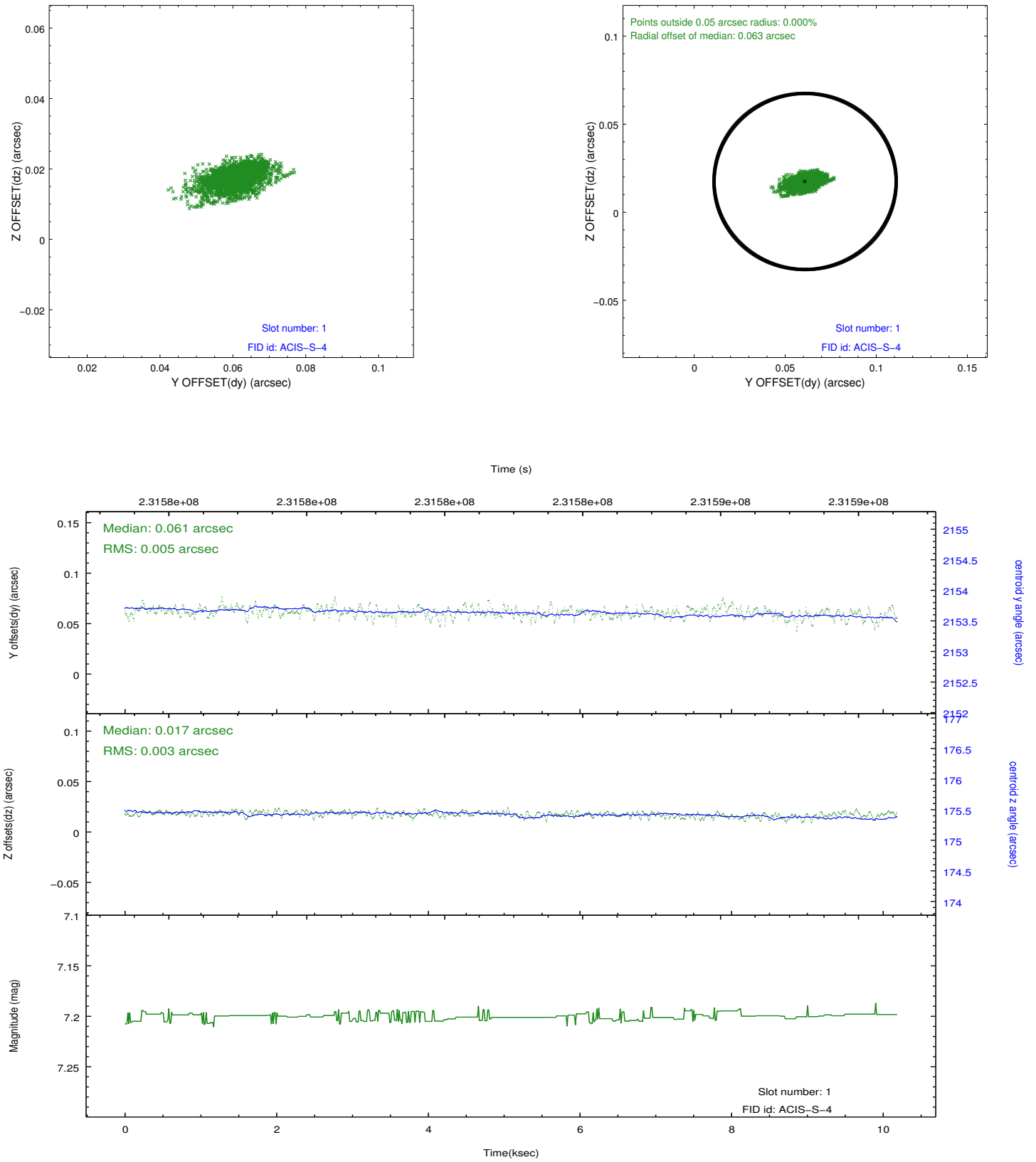


2.5 FID Slots

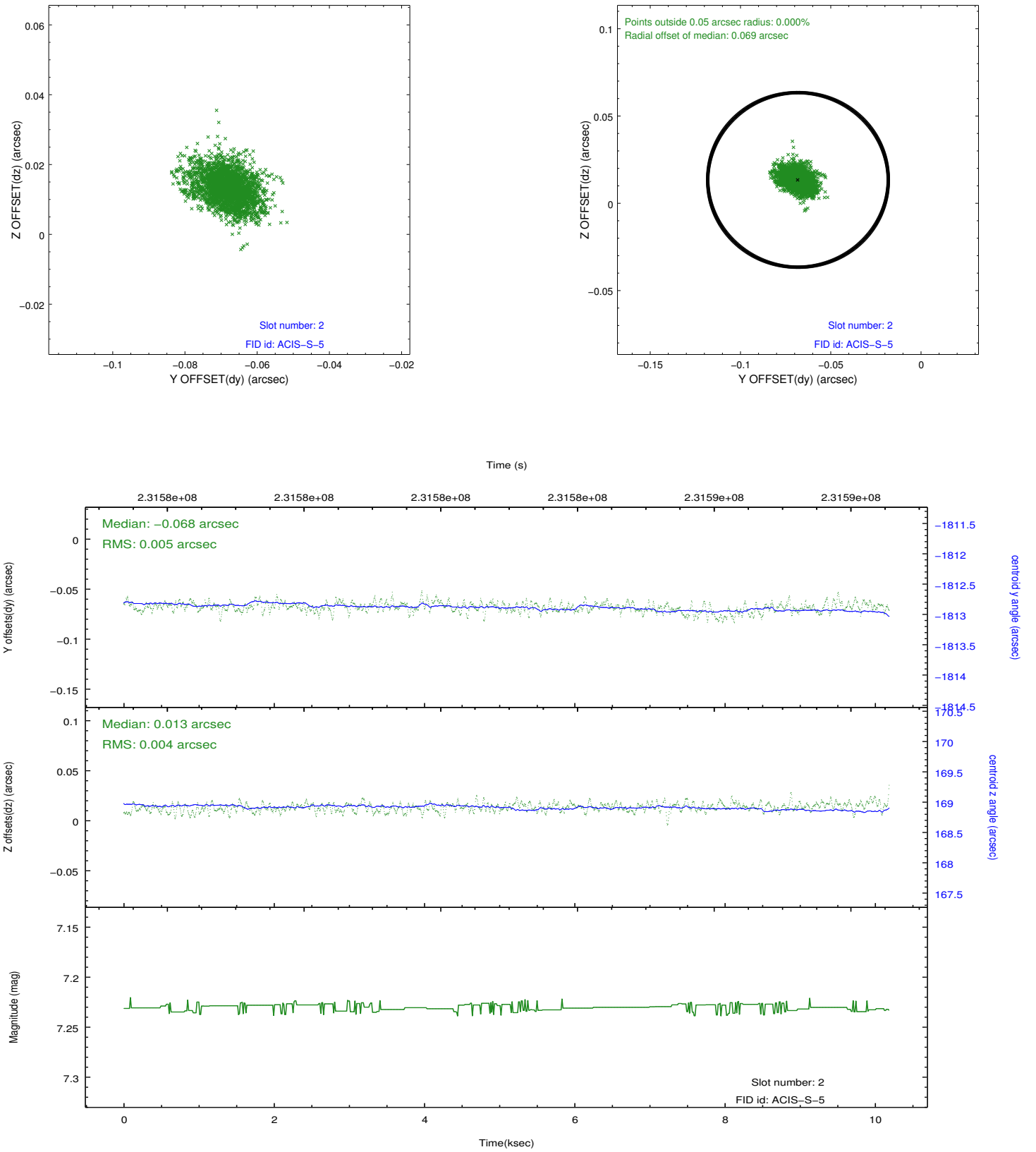
2.5.1 Slot 0



2.5.2 Slot 1



2.5.3 Slot 2



A Summary

A.1 Status

V&V Scientist	Jen Lauer
V&V Date (YYYY-MM-DD)	2013.01.15
V&V Edition	1
V&V Disposition and Status	OK
V&V Charge Time	9.8536

A.2 Comments

Roll preference met.