

V&V Reference Report

L2 ASCDS Version : 7.6.7.1

Observation 5641 - L2 Version 002
Chandra X-Ray Center

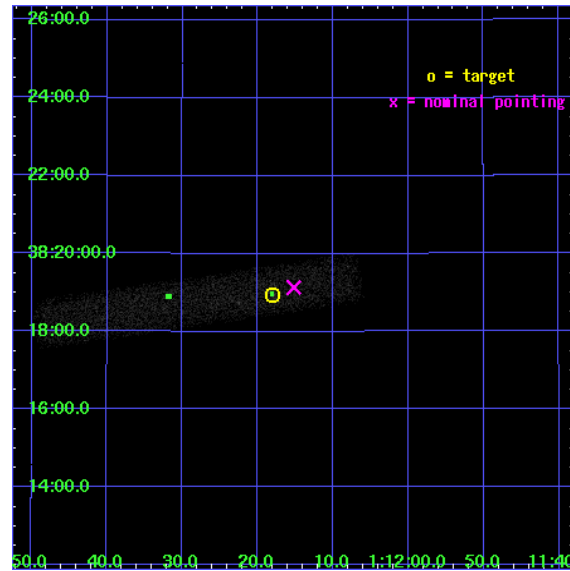
L2 Processing Date : Mar 31 2006

Contents

1	Front	2
2	OBI	3
2.1	OBI	3
2.1.1	Images	3
2.1.2	Bias	3
2.1.3	Parameters	4
2.1.4	Events	4
2.2	Compared Parameters	5
2.3	Aspect	6
2.4	Star Slots	9
2.4.1	Slot 3	9
2.4.2	Slot 4	10
2.4.3	Slot 5	11
2.4.4	Slot 6	12
2.4.5	Slot 7	13
2.5	FID Slots	14
2.5.1	Slot 0	14
2.5.2	Slot 1	15
2.5.3	Slot 2	16
3	Point Sources	17
A	Summary	18
A.1	Status	18
A.2	Comments	18

1 Front

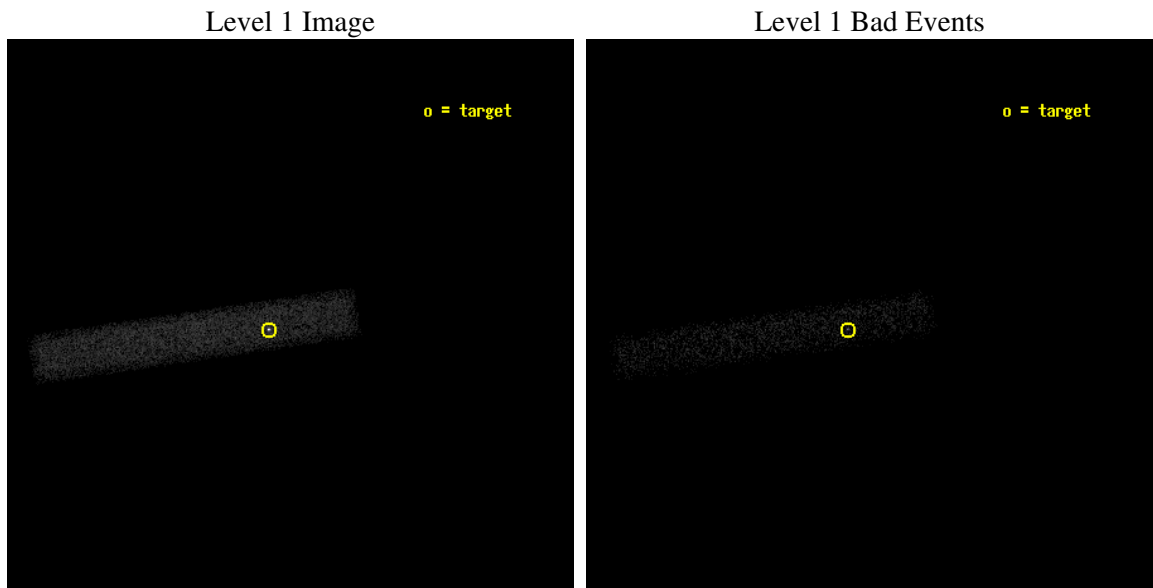
seq_num	701064
obs_id	5641
title	The Extended X-ray Structure of a New Population of Blazars
observer	Dr. Hermine Landt
object	RGBJ0112+3818
dtcycle	0
cycle	P
ra_targ	18.075
dec_targ	38.315806
ra_nom	18.063336066301
dec_nom	38.318804137831
roll_nom	171.75835513254
revision	2
ontime	15232.800226986
livetime	13815.345752754
ontime7	15232.800226986
l2events	11033



2 OBI

2.1 OBI

2.1.1 Images



2.1.2 Bias

Chip 7



2.1.3 Parameters

obi_num	1
ascdsver	7.6.7.1
caldbver	3.2.1
date	2006-03-31T21:27:00
revision	2

sched_exp_time	15050.964000
ontime	16183.392284811
ontime7	16183.392284811
l1events	24749

2.1.4 Events

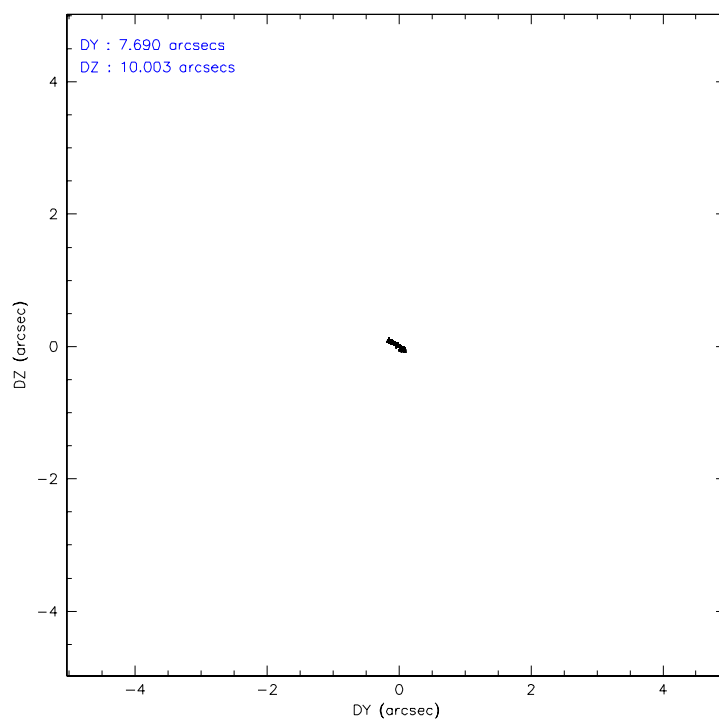
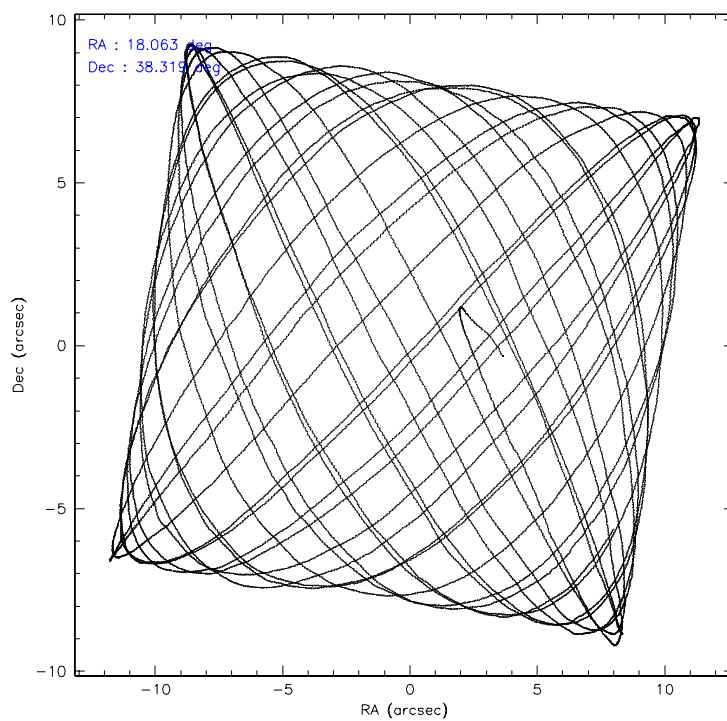
	ccd 7
level 1 events	24749
rejected events	13322
rejected %	53%

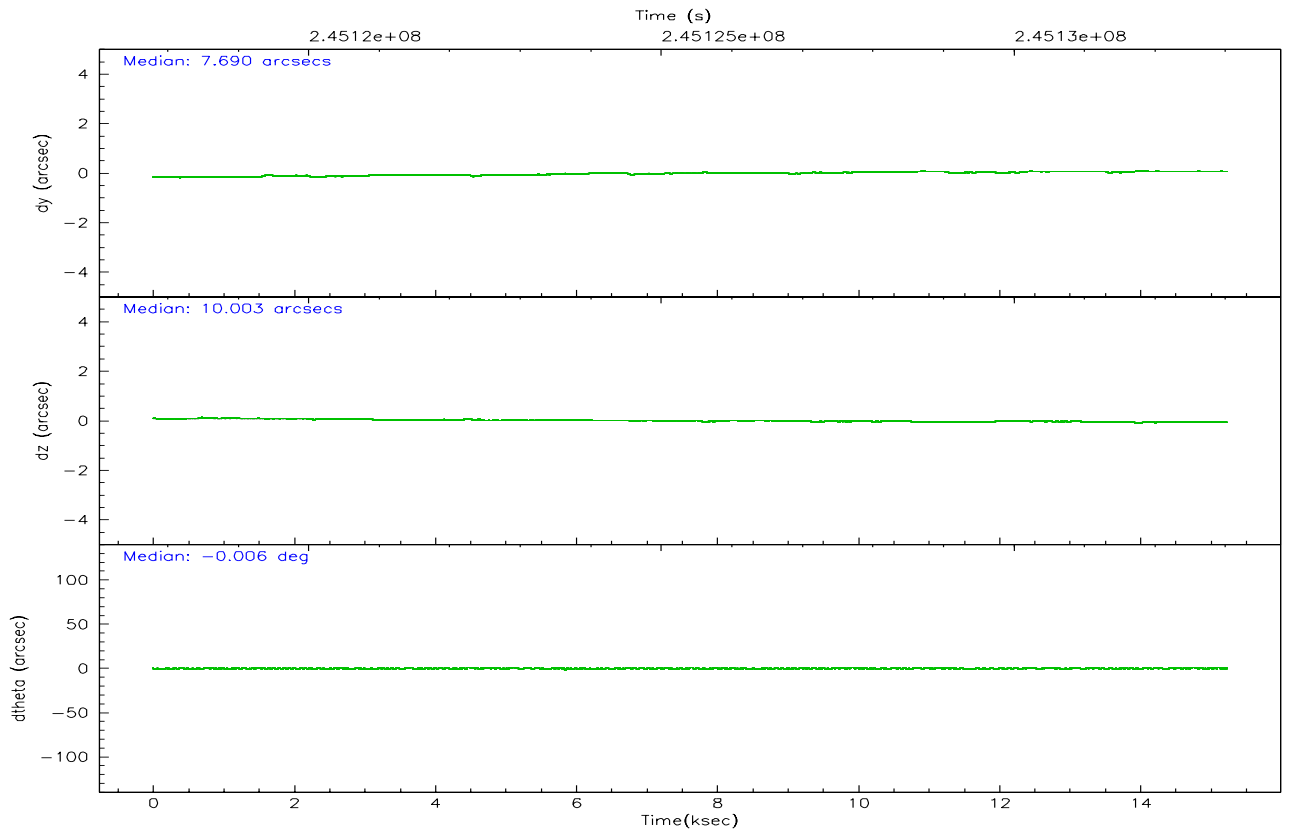
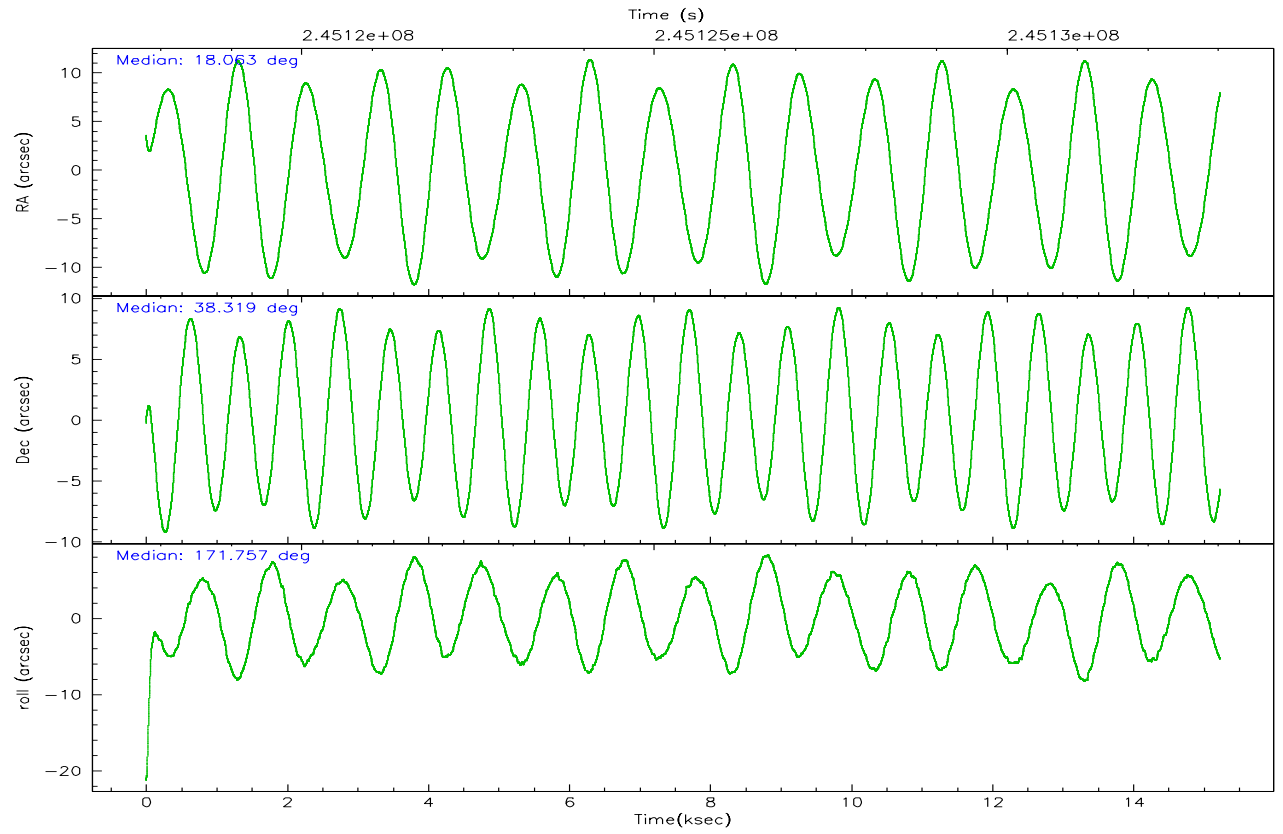
	ccd 7
grade 0 events	1390
	5%
grade 1 events	21
	0%
grade 2 events	2697
	10%
grade 3 events	1252
	5%
grade 4 events	1184
	4%
grade 5 events	1572
	6%
grade 6 events	5491
	22%
grade 7 events	11142
	45%

2.2 Compared Parameters

Parameter	Planned	Actual	Parameter	Planned	Actual
Instrument	ACIS	ACIS	Obspar format version number	6	6
Detector	ACIS-7	ACIS-7	Obspar file type	PREDICTED	ACTUAL
Grating	NONE	NONE	Obspar update status	NONE	UPDATED
Data mode	FAINT	FAINT	On-chip summing requested	N	N
Observation mode	POINTING	POINTING	Subarray requested	1/8	1/8
Pointing RA	18.095371	18.0633360663005	Subarray start row	0	449
Pointing Dec	38.329278	38.31880413783104	Subarray row count	1024	128
Pointing Roll	171.581873	171.7583551325376	Alternating exposures requested	N	N
SIM focus pos (mm)	-0.684267	-0.6828225247311905	Primary exposure time	0.000000	0.4
SIM defocus (mm)	0	0.001444936568705701			
SIM translation stage pos (mm)	-190.132523	-190.1425803651734			
SIM translation stage offset (mm)	0	0.01005778216563158			
Observation start time	245117967.184000	245116835.82683			
Observation start date	2005-10-08T00:18:23	2005-10-08T00:00:35			
Observation end time	245133018.184000	245133244.02758			
Observation end date	2005-10-08T04:29:14	2005-10-08T04:34:04			
Read mode	TIMED	TIMED			

2.3 Aspect



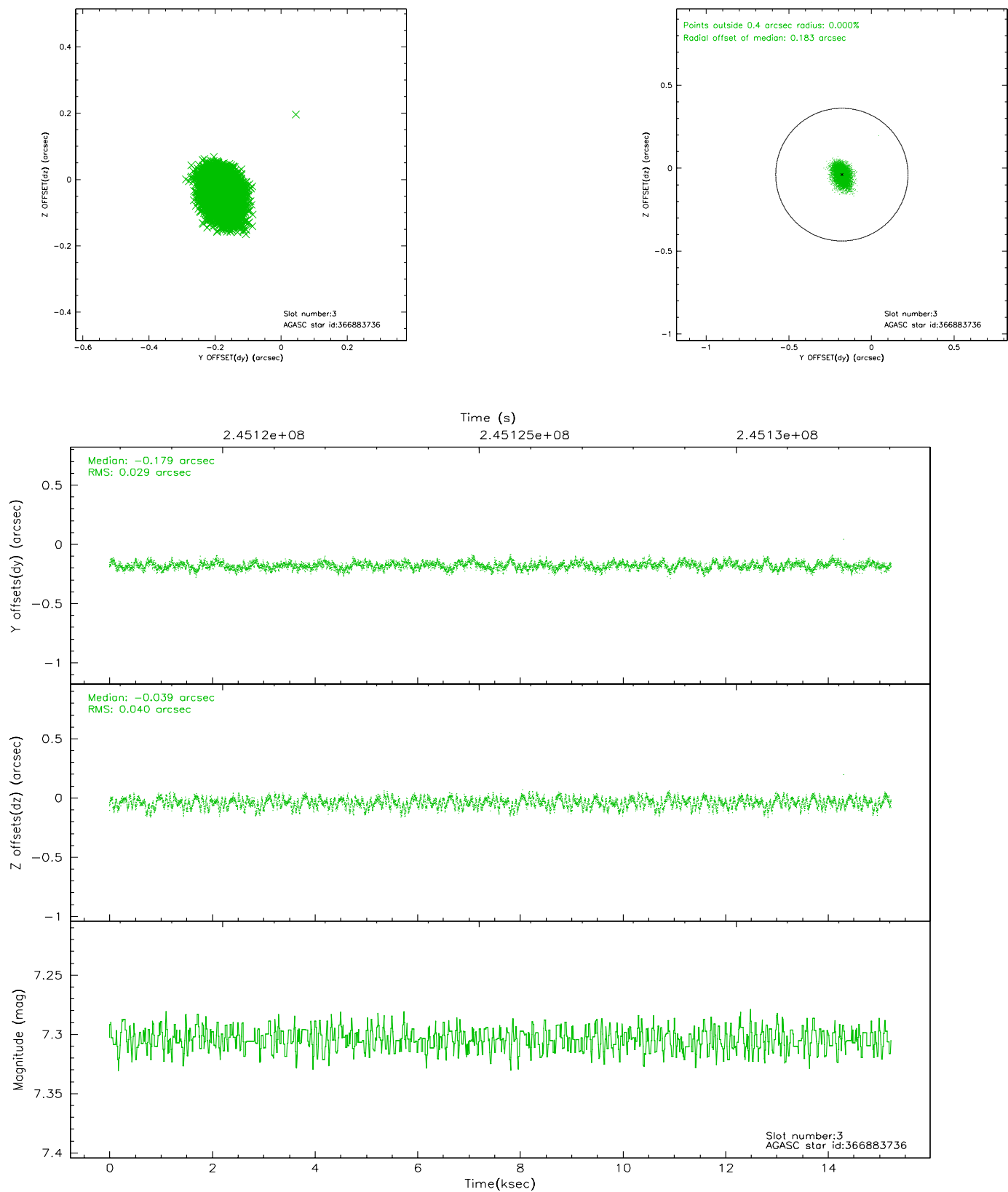


Slot Statistics

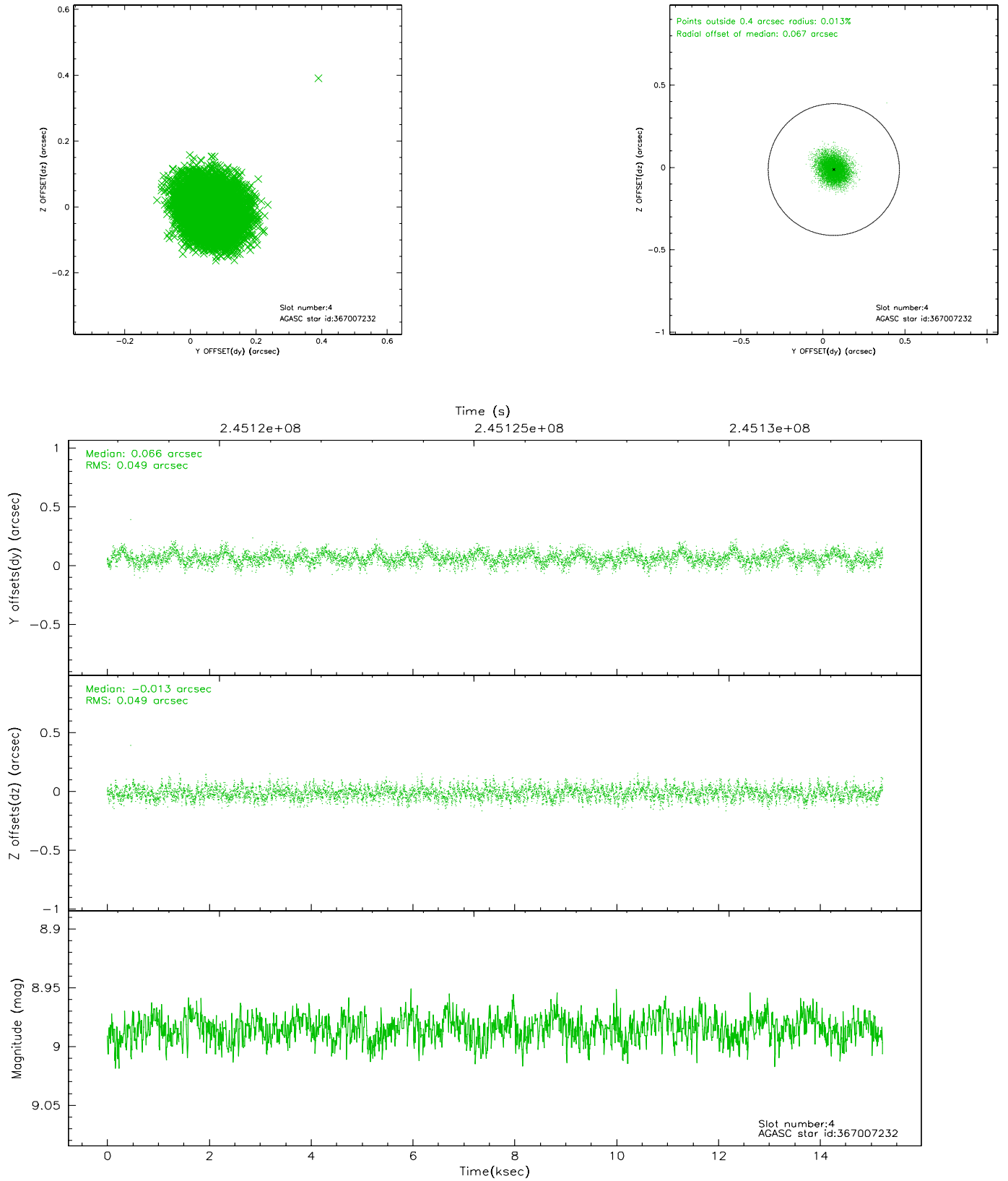
slot	status	id	mag	n_pts	med_dy	med_dz	dr1	dr2	ra	dec	mean_y	mean_z
0	FID	ACIS-S-1	7.19	3716	0.019	-0.012	0.007	0.011	0.000000	0.000000	935.63	-1726.84
1	FID	ACIS-S-5	7.24	3716	-0.054	0.017	0.008	0.015	0.000000	0.000000	-1813.29	170.42
2	FID	ACIS-S-6	7.35	3716	0.013	0.007	0.008	0.012	0.000000	0.000000	400.84	814.72
3	GUIDE	366883736	7.30	7431	-0.179	-0.039	0.052	0.084	17.320033	37.839828	1923.70	2056.74
4	GUIDE	367007232	8.98	7427	0.066	-0.013	0.075	0.120	18.025227	38.205119	131.03	471.41
5	GUIDE	367009408	8.12	7432	-0.002	0.136	0.057	0.089	18.857504	38.486534	-2040.26	-883.12
6	GUIDE	367011488	9.08	7425	-0.014	0.119	0.089	0.143	17.975949	37.904055	111.23	1563.81
7	GUIDE	367014000	8.34	7430	0.125	-0.201	0.072	0.116	18.459048	37.653797	-1381.11	2251.62

2.4 Star Slots

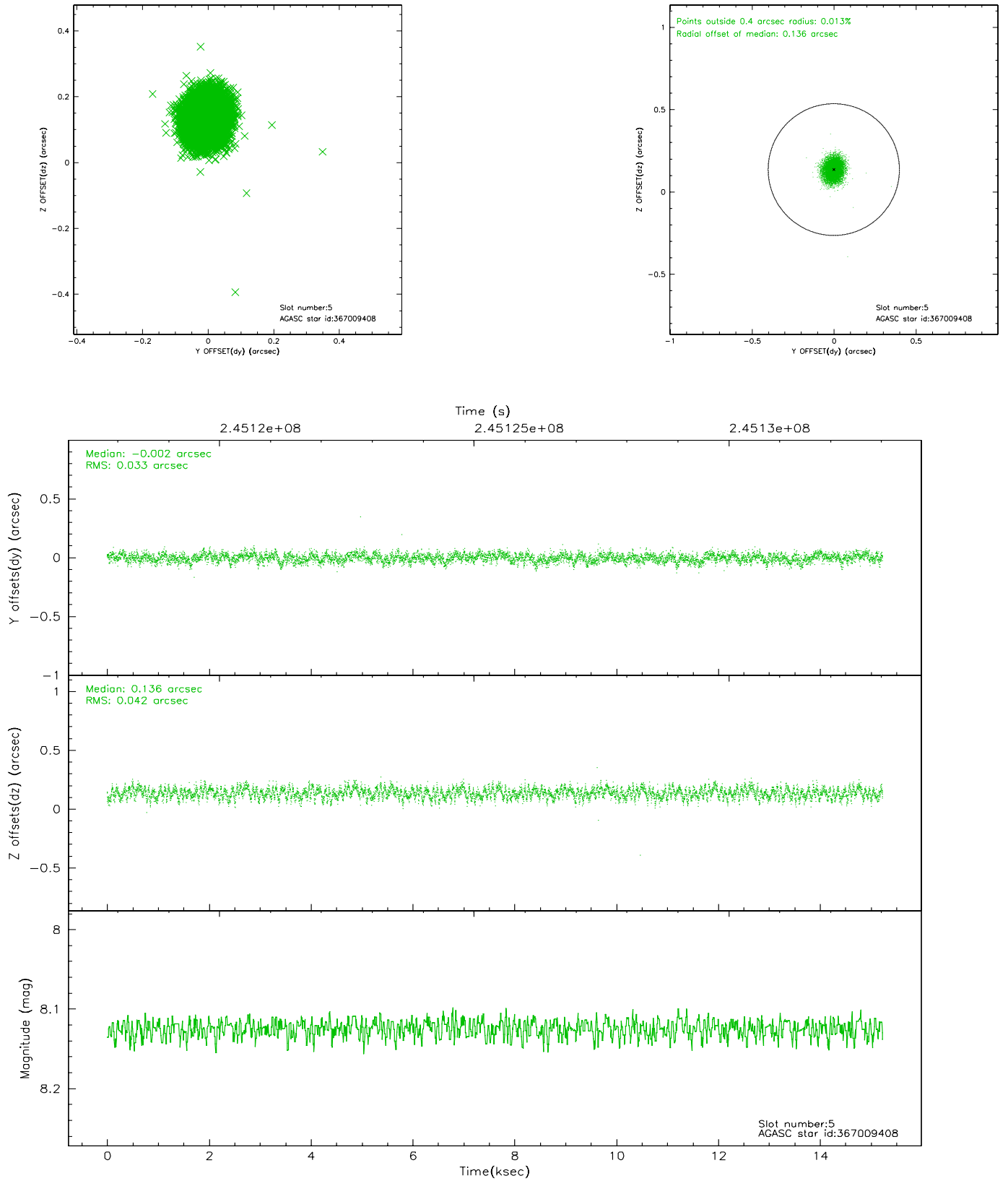
2.4.1 Slot 3



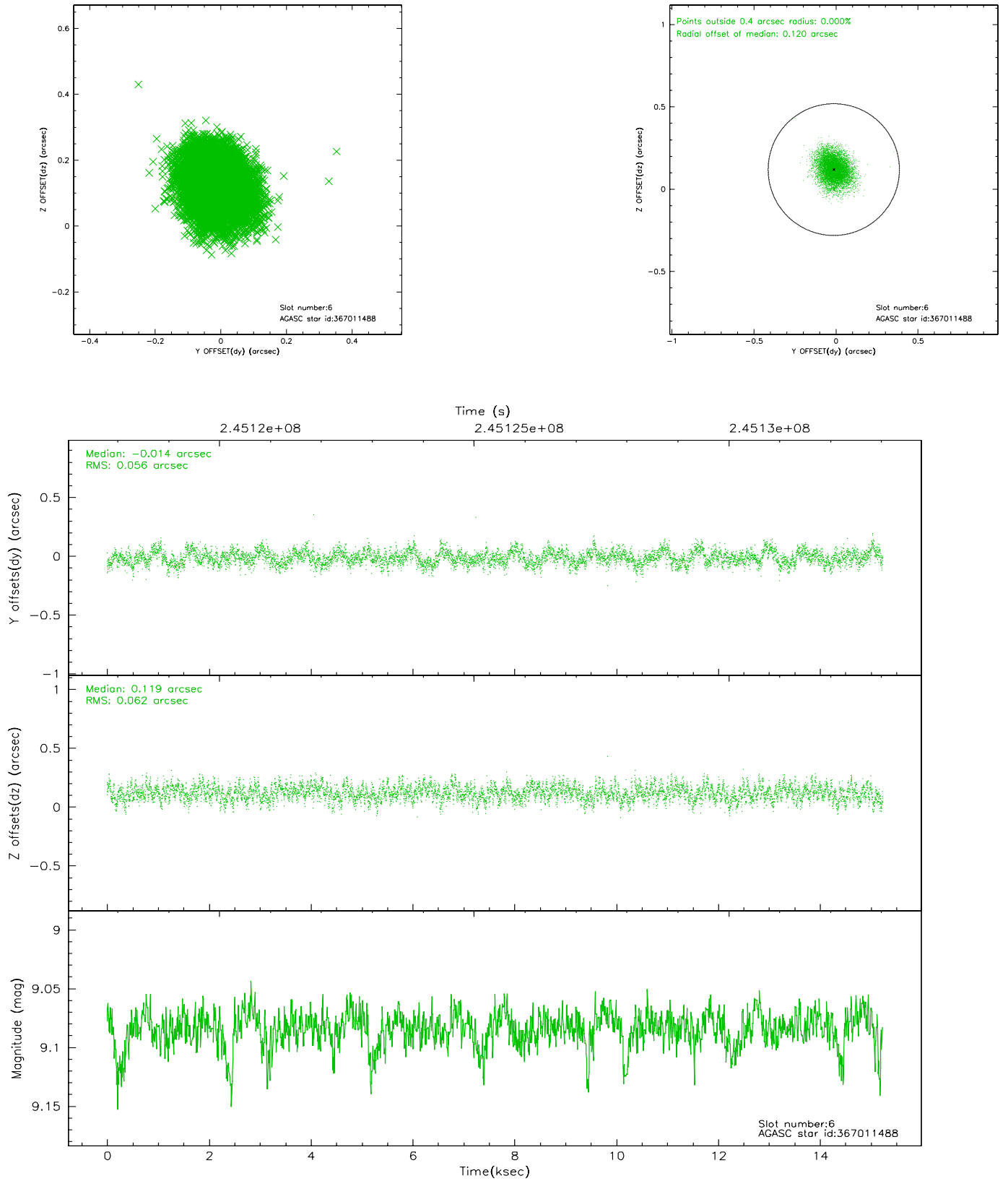
2.4.2 Slot 4



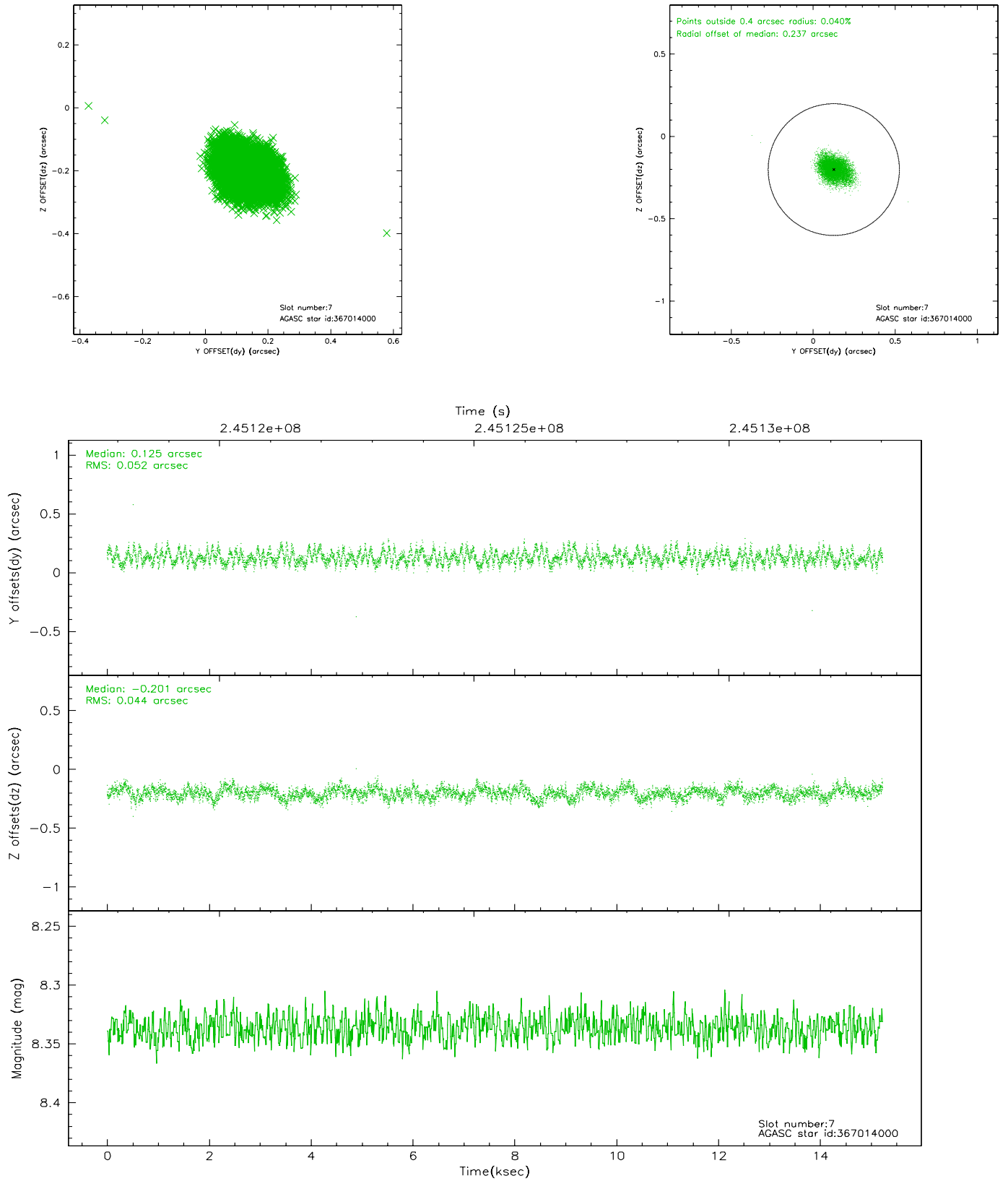
2.4.3 Slot 5



2.4.4 Slot 6

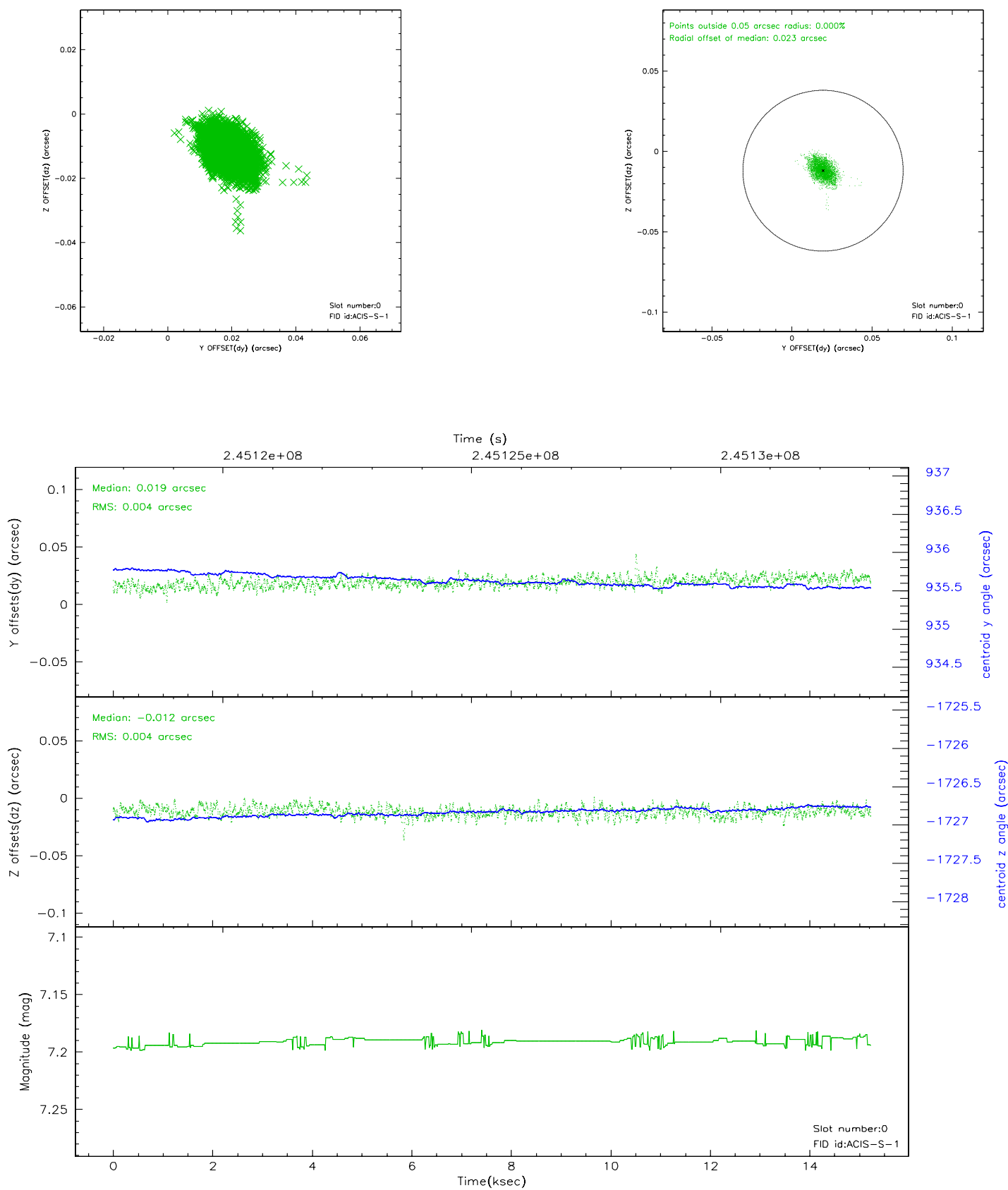


2.4.5 Slot 7

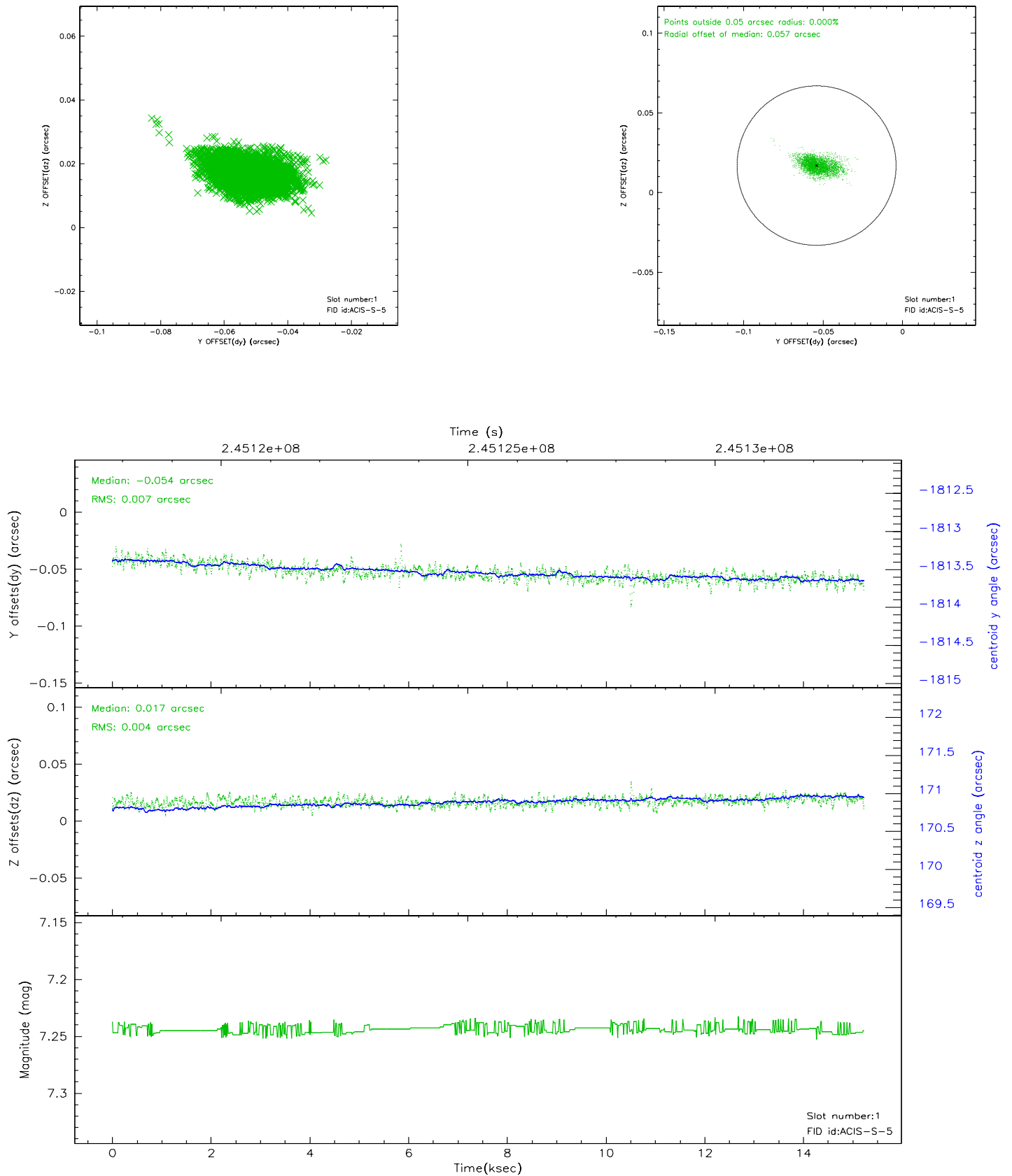


2.5 FID Slots

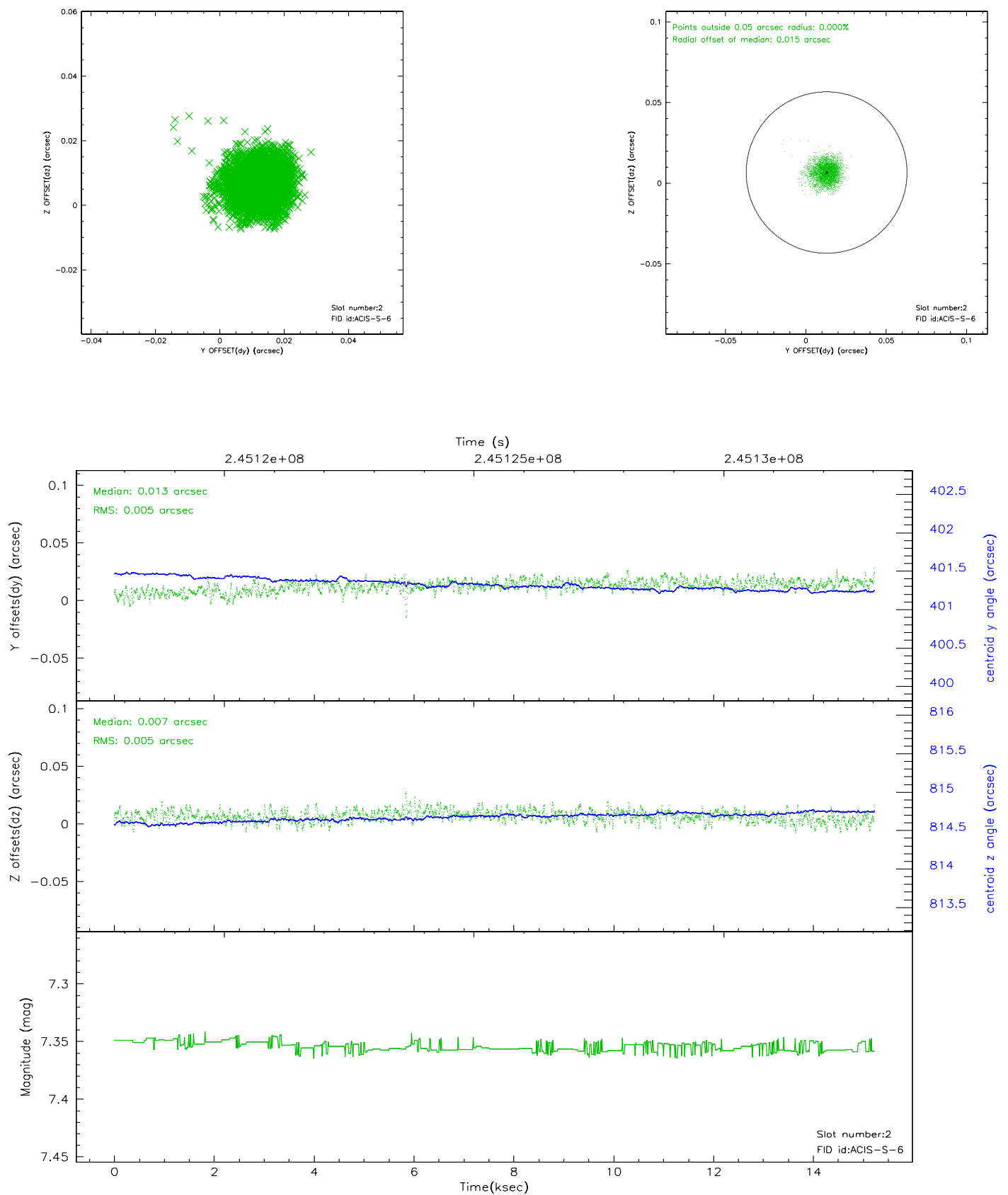
2.5.1 Slot 0



2.5.2 Slot 1



2.5.3 Slot 2



3 Point Sources

A Summary

A.1 Status

V&V Scientist	Jen Lauer
V&V Date (YYYY-MM-DD)	2006.04.03
V&V Edition	1
V&V Disposition and Status	OK
V&V Charge Time	15.2328

A.2 Comments

As a consequence of the DEA-A shutdown anomaly on Sep 15th (DOY258), the the reported value of the ACIS FP temperature was ~1.3 degrees warmer than the actual temperature. GOs should subtract 1.3 degrees from the reported temperature to determine the true temperature.

Roll preference met.