

V&V Reference Report

L2 ASCDS Version : 8.5.1.1

Observation 5638 - L2 Version 5
Chandra X-Ray Center

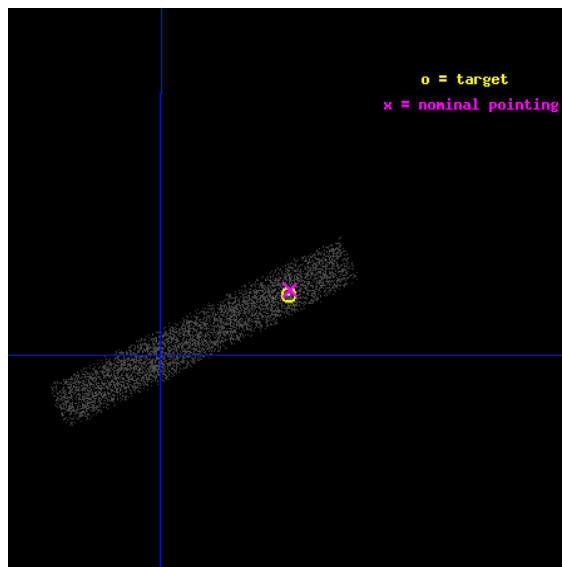
L2 Processing Date : Jan 31 2013

Contents

1	Front	2
2	OBI	3
2.1	OBI	3
2.1.1	Images	3
2.1.2	Bias	3
2.1.3	Parameters	4
2.1.4	Events	4
2.2	Compared Parameters	5
2.3	Aspect	6
2.4	Star Slots	9
2.4.1	Slot 4	9
2.4.2	Slot 5	10
2.4.3	Slot 6	11
2.4.4	Slot 7	12
2.5	FID Slots	13
2.5.1	Slot 0	13
2.5.2	Slot 1	14
2.5.3	Slot 2	15
A	Summary	16
A.1	Status	16
A.2	Comments	16

1 Front

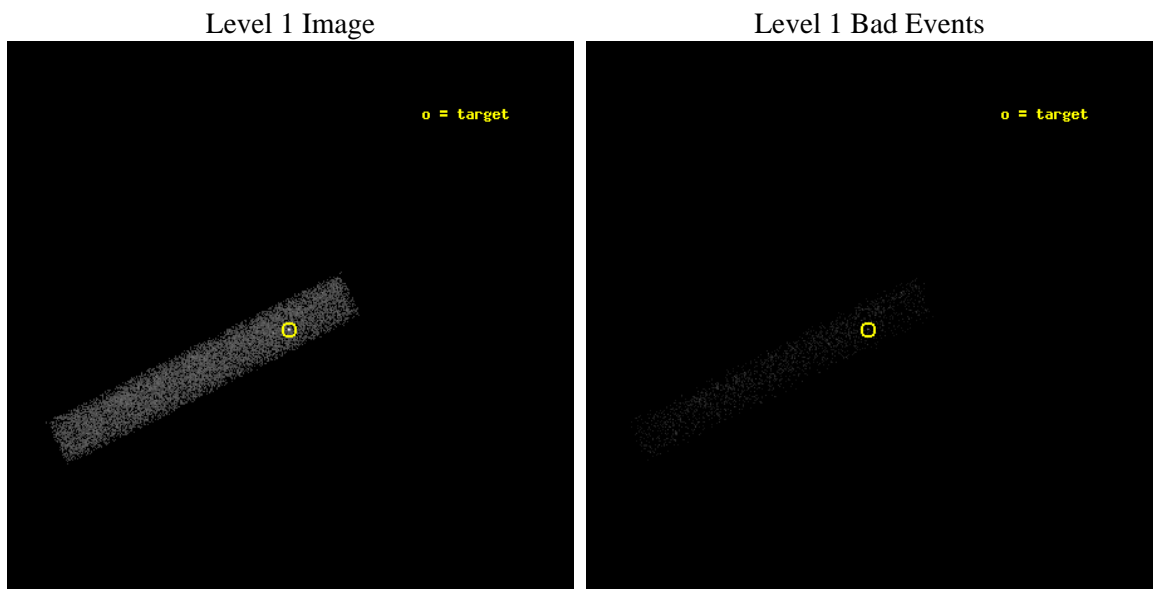
seq_num	701061	Sequence number
obs_id	5638	Observation id
title	The Extended X-ray Structure of a New Population of Blazars	Propos
observer	Dr. Hermine Landt	Principal investigator
object	RGBJ0254+3931	Source name
dtcycle	0	
cycle	P	events from which exps? Prim/Second/Both
ra_targ	43.6775	Observer's specified target RA [deg]
dec_targ	39.526333	Observer's specified target Dec [deg]
ra_nom	43.676961476148	Nominal RA [deg]
dec_nom	39.528345862791	Nominal Dec [deg]
roll_nom	153.20527308335	Nominal Roll [deg]
revision	5	Processing version of data
ontime	9687.2001443207	Sum of GTIs [s]
livetime	8785.7791985496	Livetime [s]
ontime7	9687.2001443207	Sum of GTIs [s]
l2events	7741	Number of level 2 events



2 OBI

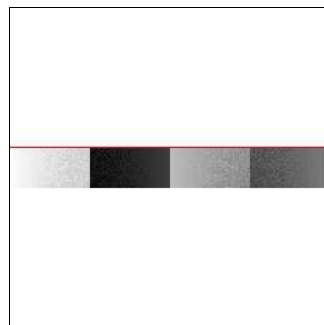
2.1 OBI

2.1.1 Images



2.1.2 Bias

Chip 7



2.1.3 Parameters

obi_num	1	Obi number	sched_exp_time	9500.000000	[s] Scheduled observation exposure time
ascdsver	8.5.1.1	Processing system revision	ontime	9687.2001443207	Sum of GTIs [s]
caldsver	4.5.5	 	ontime7	9687.2001443207	Sum of GTIs [s]
date	2013-02-01T00:44:22	Date and time of file creation	l1events	16995	Number of level 1 events
revision	5	Processing version of data			

2.1.4 Events

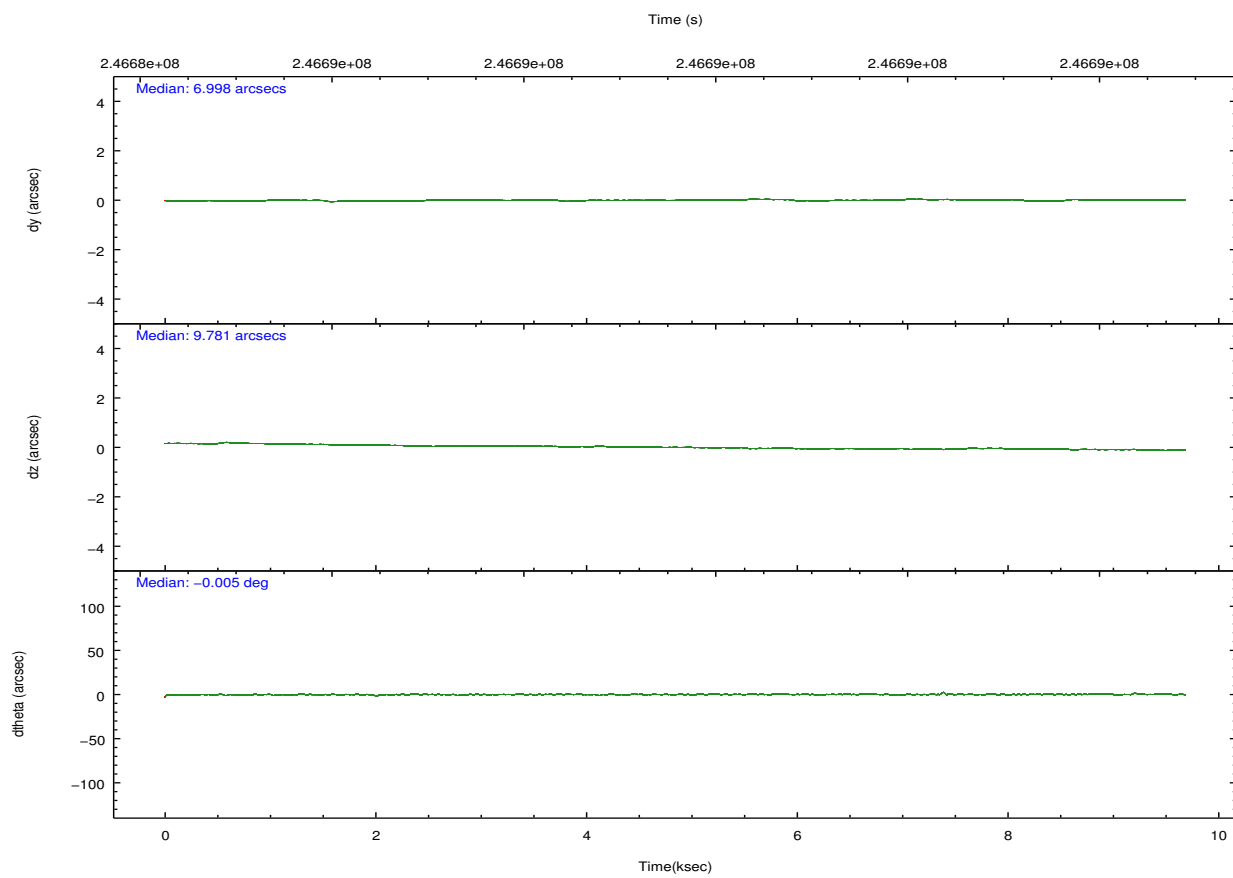
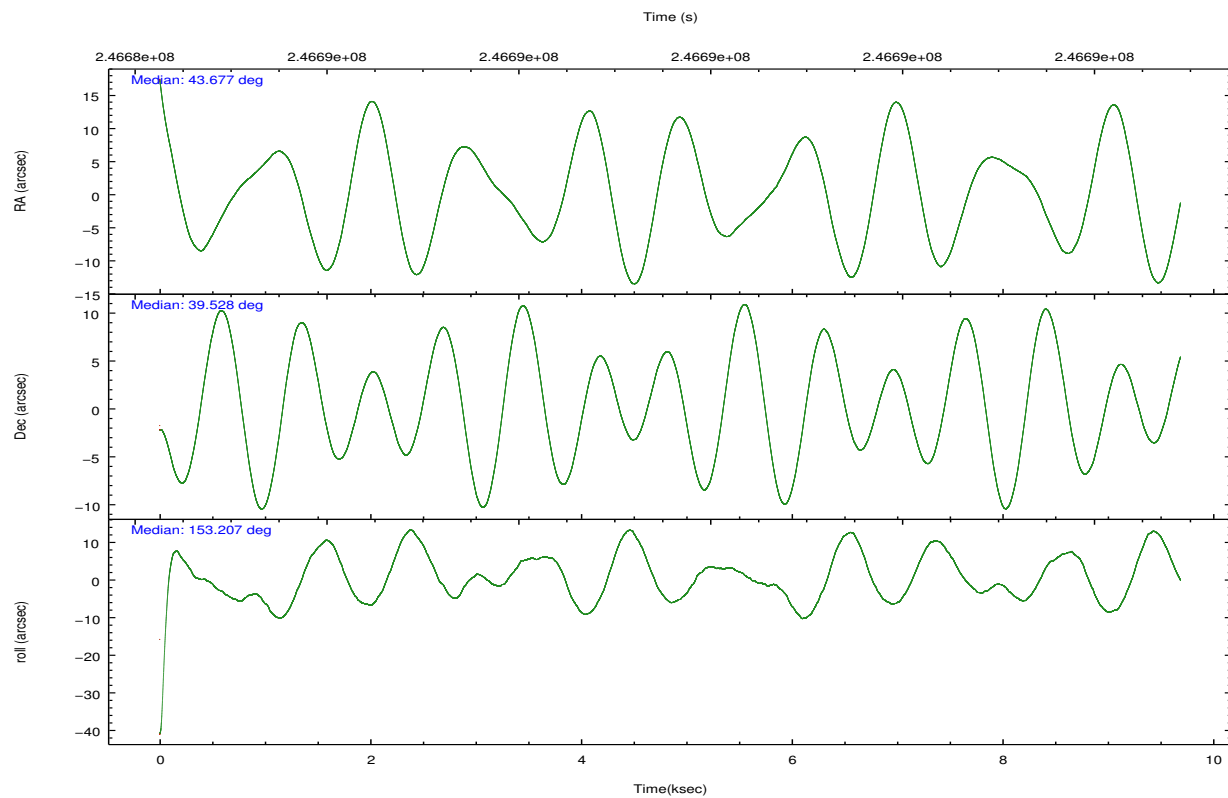
	ccd 7
level 1 events	16995
rejected events	8979
rejected %	52%

	ccd 7
grade 0 events	1195
	7%
grade 1 events	19
	0%
grade 2 events	1798
	10%
grade 3 events	1157
	6%
grade 4 events	1071
	6%
grade 5 events	1480
	8%
grade 6 events	3504
	20%
grade 7 events	6771
	39%

2.2 Compared Parameters

Parameter	Planned	Actual	Parameter	Planned	Actual
Instrument	ACIS	ACIS	Obspar format version number	7	7
Detector	ACIS-7	ACIS-7	Obspar file type	PREDICTED	ACTUAL
Grating	NONE	NONE	Obspar update status	NONE	UPDATED
Data mode	FAINT	FAINT	Number of optional ACIS chips dropped	0	0
Observation mode	POINTING	POINTING	On-chip summing requested	N	N
[deg] Pointing RA	43.712271	43.67696147614834	Subarray requested	CUSTOM	1/8
[deg] Pointing Dec	39.530275	39.52834586279101	Subarray start row	449	449
[deg] Pointing Roll	153.026221	153.2052730833499	Subarray row count	128	128
[mm] SIM focus pos	-0.684267	-0.6828225247311905	Alternating exposures requested	N	N
[mm] SIM defocus	0	0.001444936568705701	[s] Primary exposure time	0.000000	0.4
[mm] SIM translation stage pos	-190.132523	-190.1425803651734			
[mm] SIM translation stage offset	0	0.01005778216563158			
[s] Observation start time (MET)	246684920.184000	246683711.8865			
Observation start date	2005-10-26T03:34:16	2005-10-26T03:15:11			
[s] Observation end time (MET)	246694420.184000	246695816.62455			
Observation end date	2005-10-26T06:12:36	2005-10-26T06:36:56			
Read mode	TIMED	TIMED			

2.3 Aspect

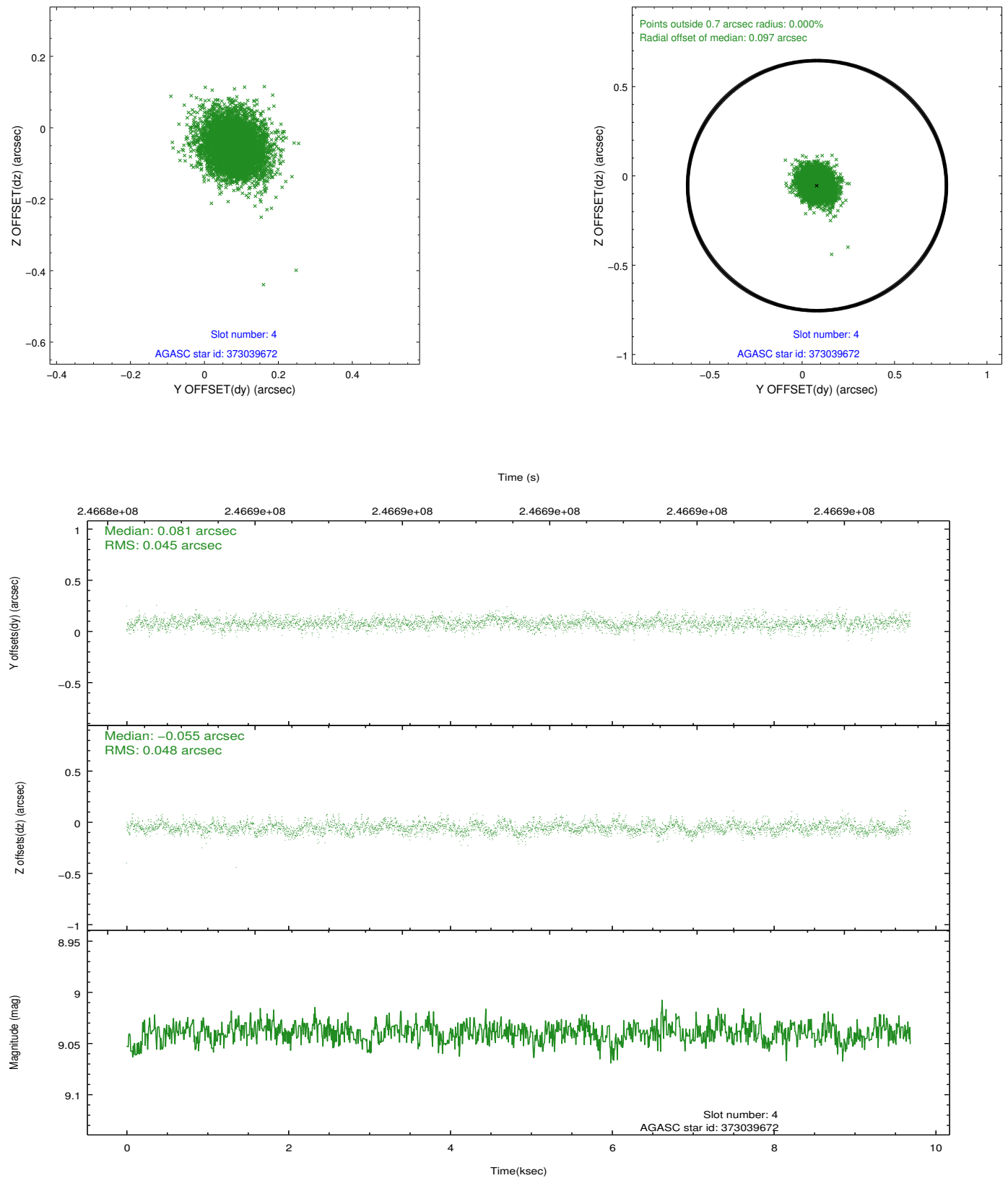


Slot Statistics

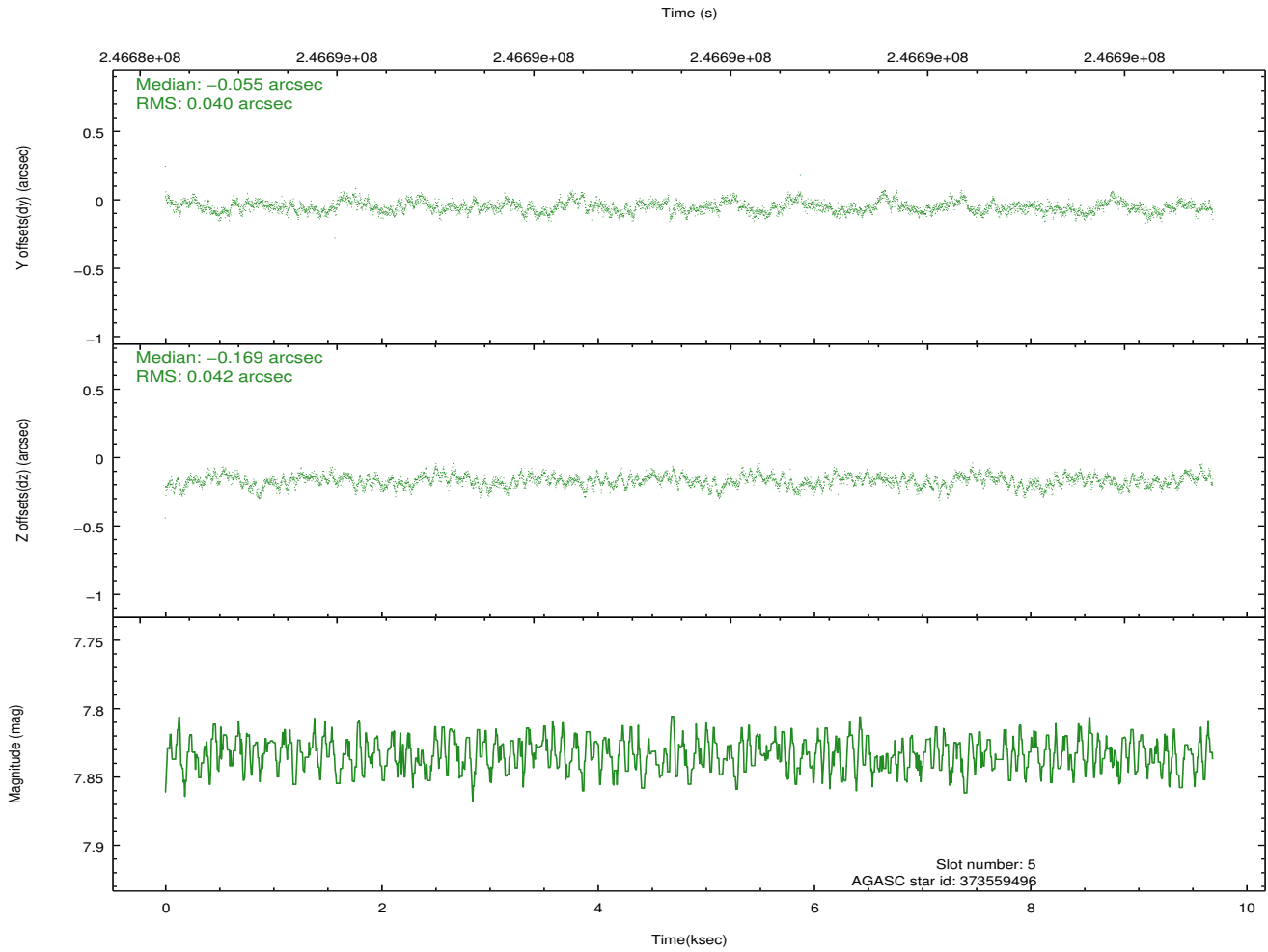
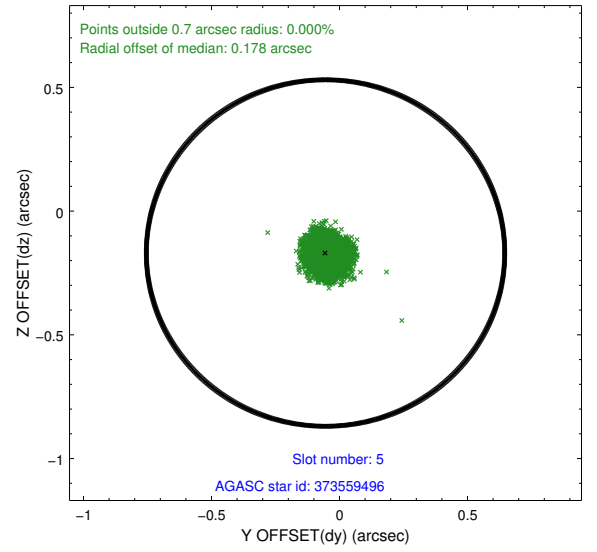
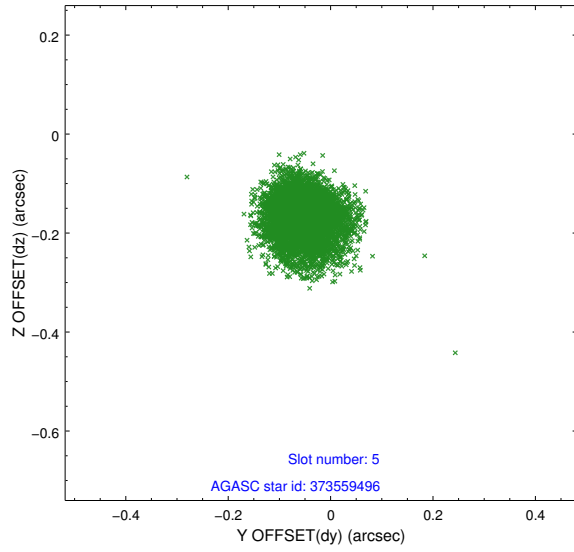
slot	status	id	mag	n_pts	med_dy	med_dz	dr1	dr2	ra	dec	mean_y	mean_z
0	FID	ACIS-S-2	7.10	2364	-0.057	-0.040	0.007	0.012	0.000000	0.000000	-759.76	-1731.04
1	FID	ACIS-S-4	7.21	2364	0.112	0.038	0.006	0.011	0.000000	0.000000	2153.39	177.02
2	FID	ACIS-S-5	7.24	2364	-0.085	0.010	0.008	0.013	0.000000	0.000000	-1811.96	171.20
3	OMITTED		0.00	0	0.000	0.000	0.000	0.000	0.000000	0.000000	0.00	0.00
4	GUIDE	373039672	9.04	4721	0.081	-0.055	0.070	0.115	44.268009	39.065075	-2141.59	783.64
5	GUIDE	373559496	7.83	4727	-0.055	-0.169	0.062	0.100	43.732078	39.429120	-214.59	299.49
6	GUIDE	373563072	9.54	4710	-0.094	0.096	0.103	0.175	43.351972	40.159563	1911.97	-1571.12
7	GUIDE	373569328	9.54	4710	0.069	0.132	0.092	0.145	44.573606	39.682823	-1871.87	-1582.29

2.4 Star Slots

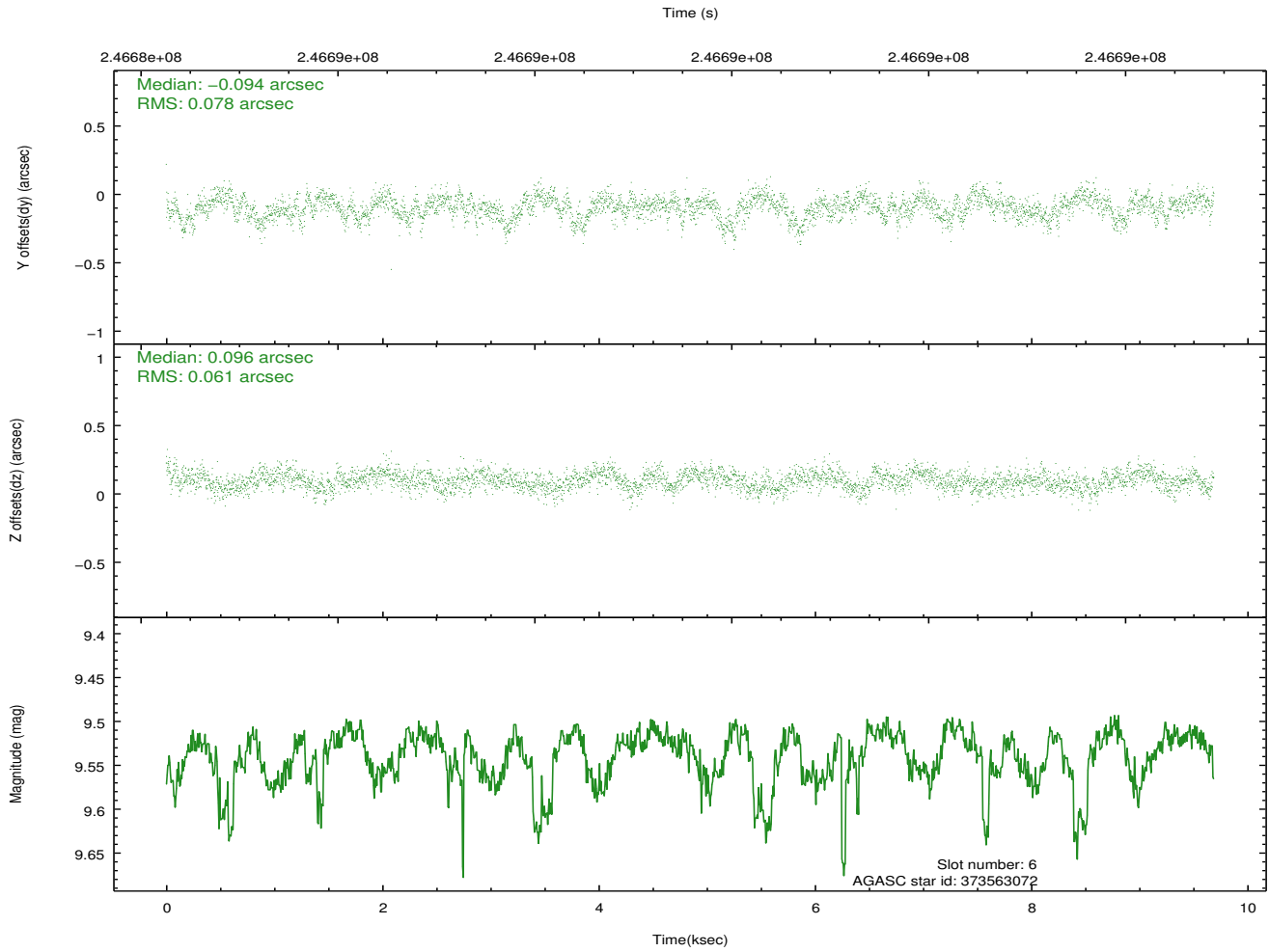
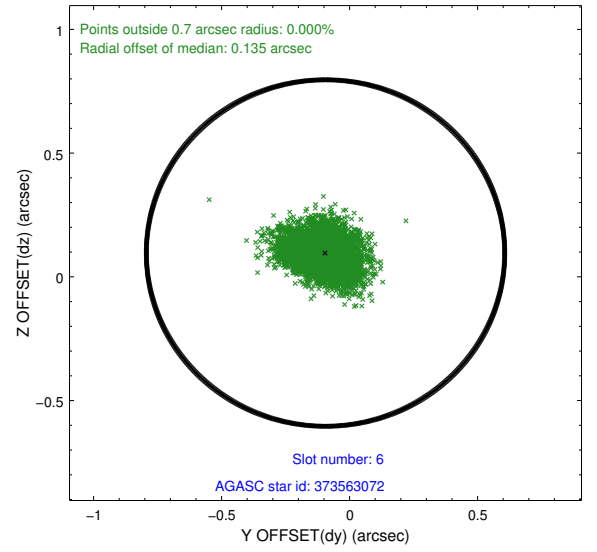
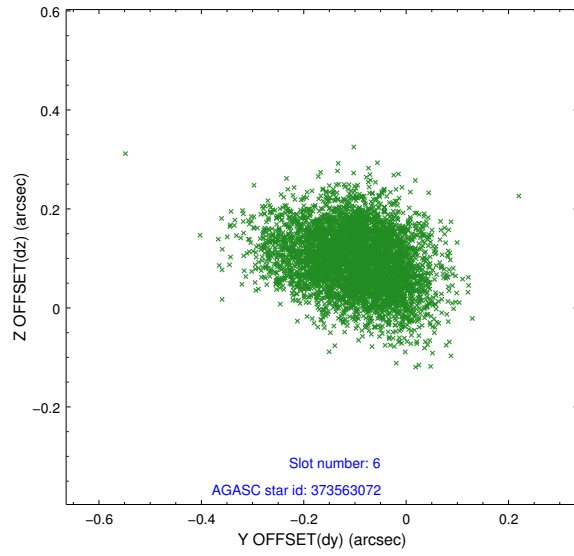
2.4.1 Slot 4



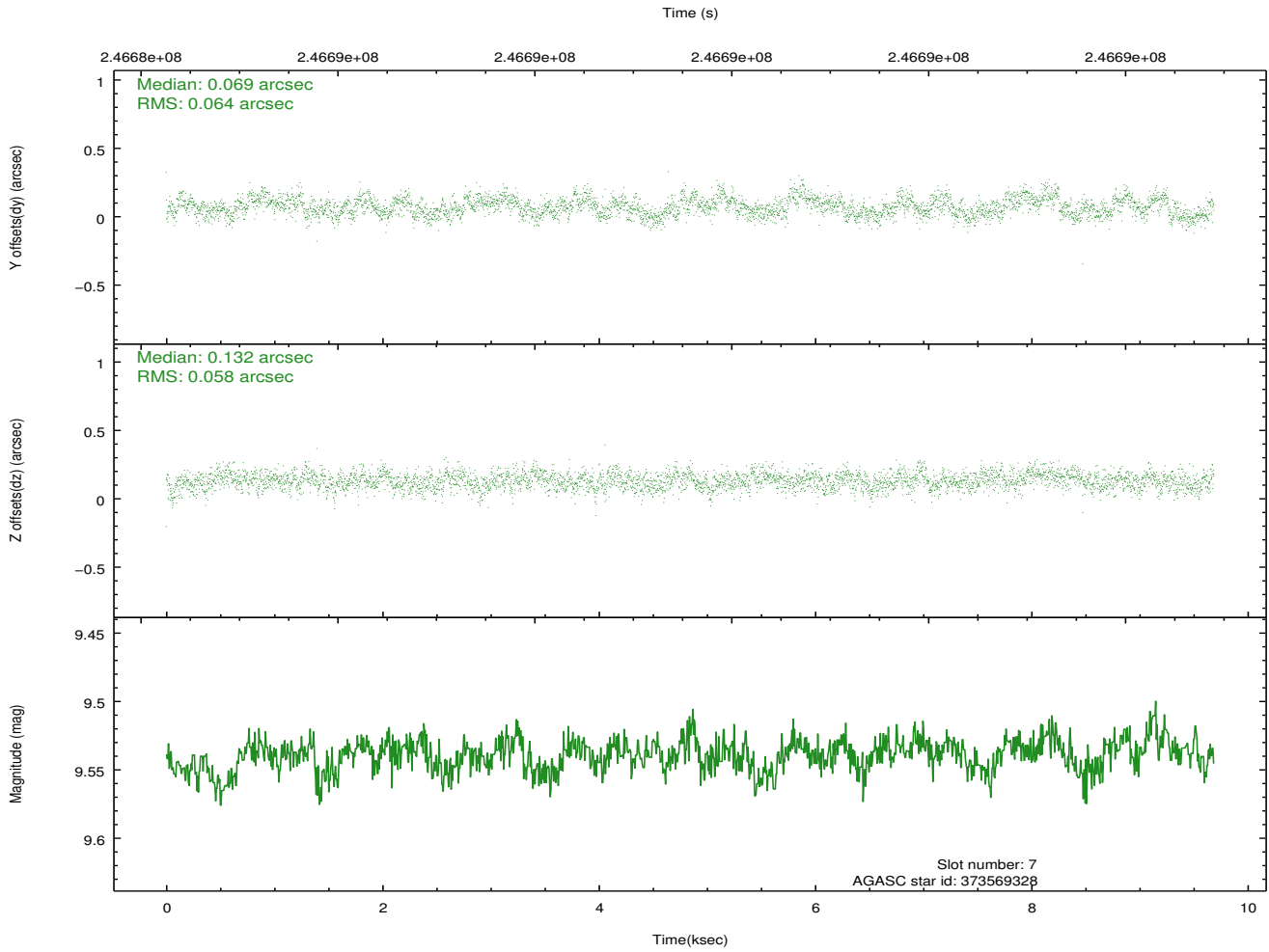
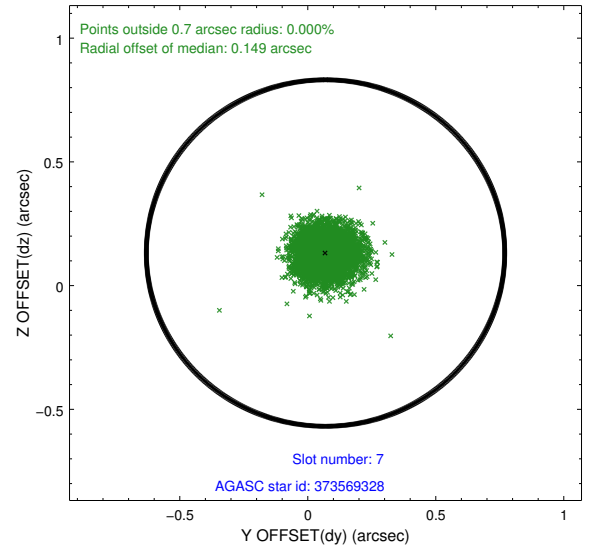
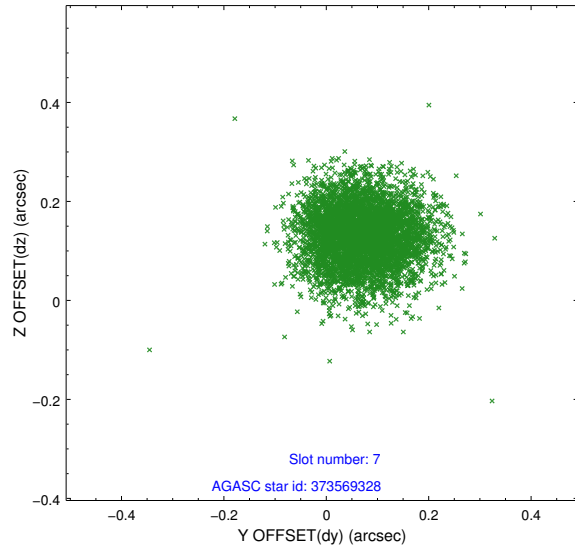
2.4.2 Slot 5



2.4.3 Slot 6

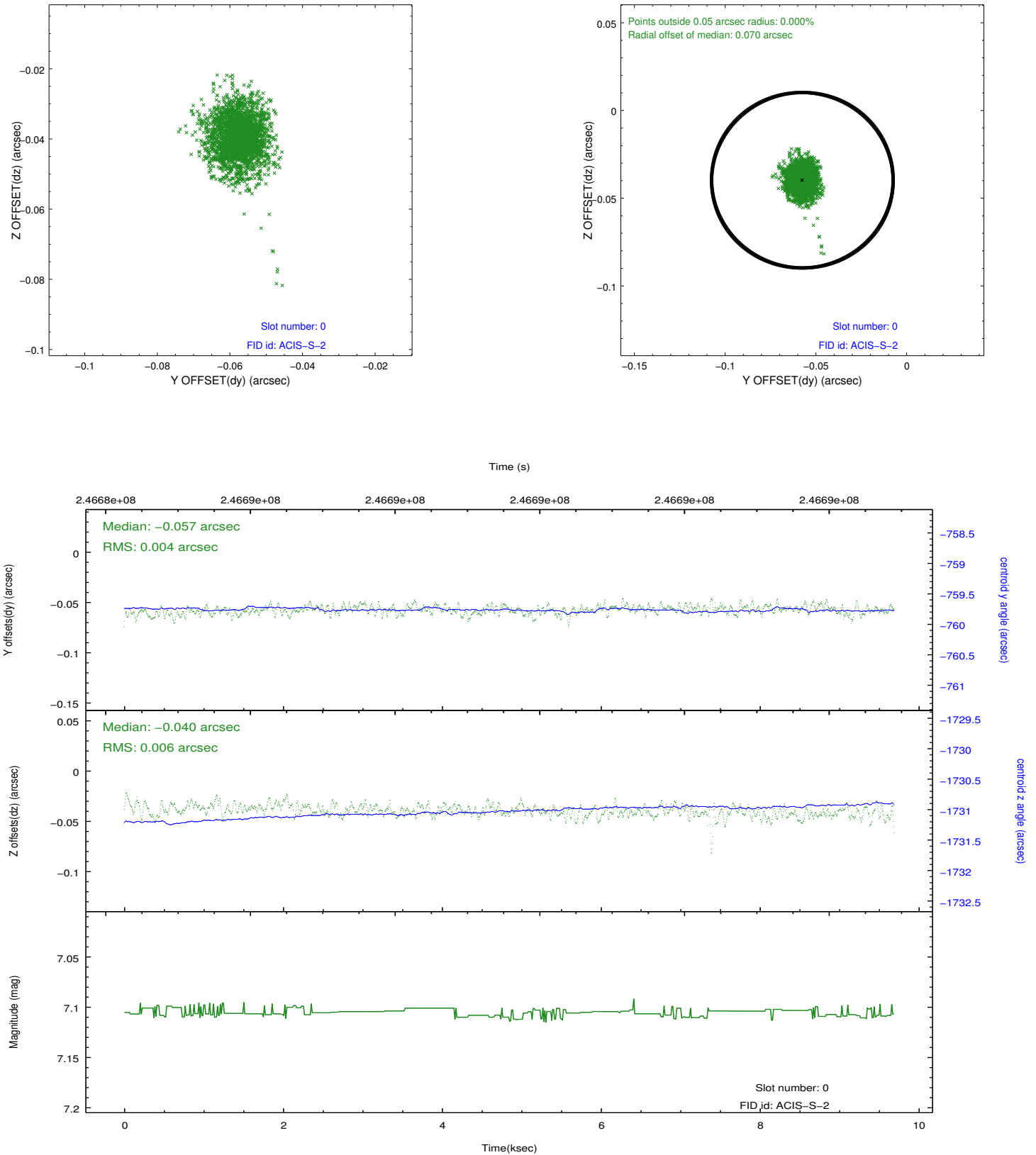


2.4.4 Slot 7

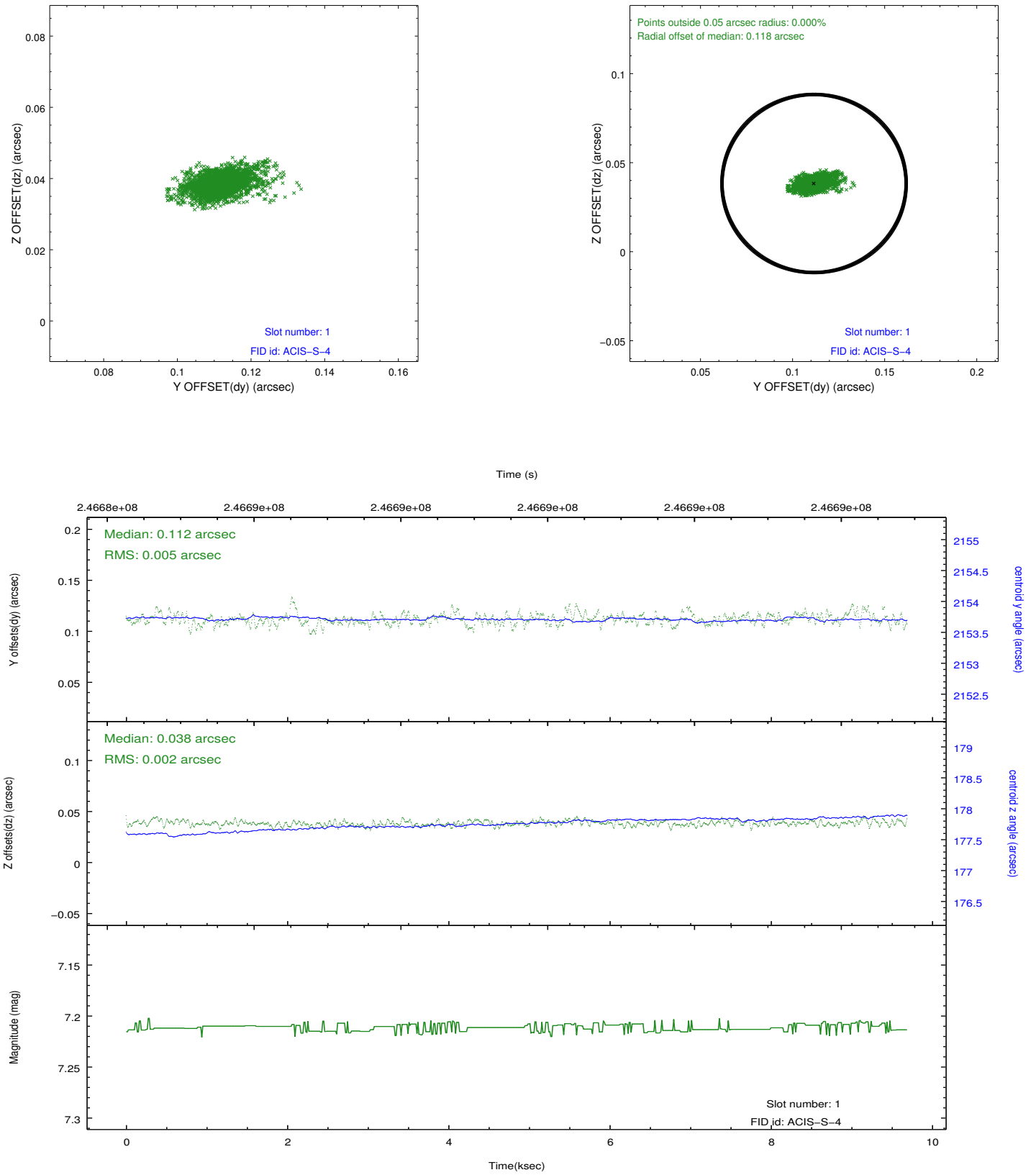


2.5 FID Slots

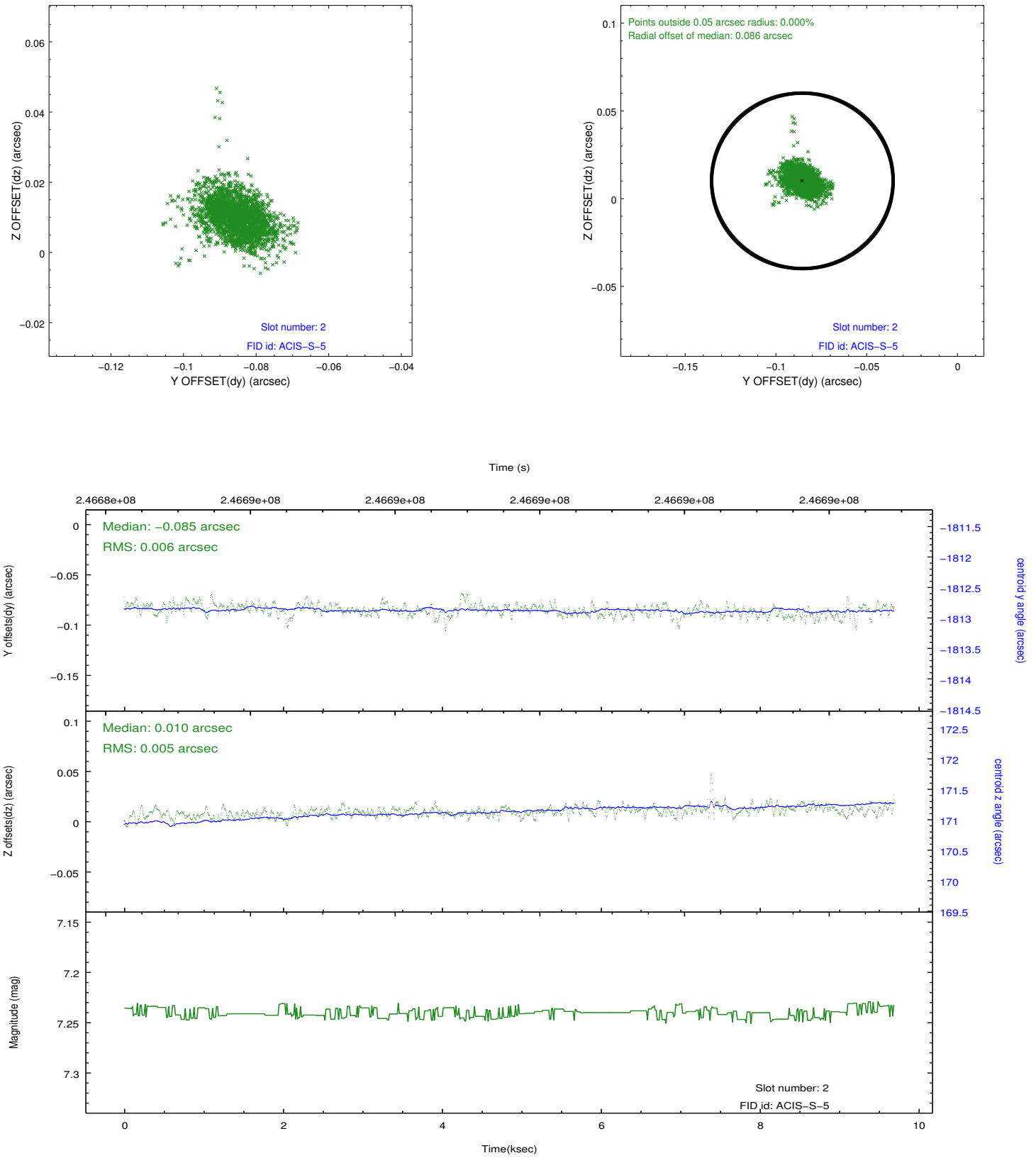
2.5.1 Slot 0



2.5.2 Slot 1



2.5.3 Slot 2



A Summary

A.1 Status

V&V Scientist	Jen Lauer
V&V Date (YYYY-MM-DD)	2013.02.01
V&V Edition	1
V&V Disposition and Status	OK
V&V Charge Time	9.4968

A.2 Comments

Charge time for this ObsId remains at previous value of 9.4968 ks although with the current processing the charge time would have been 9.69 ksec.

=====

Roll preference met.

=====

The guide star in slot 3 was removed from the aspect solution due to poor data quality. The aspect solution is improved by the removal of this guide star from the solution.