

V&V Reference Report

L2 ASCDS Version : 7.6.7

Observation 5629 - L2 Version 002
Chandra X-Ray Center

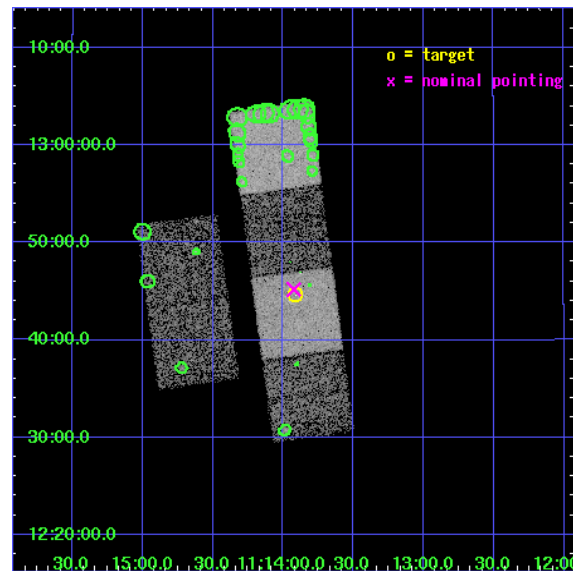
L2 Processing Date: Feb 22 2006

Contents

1	Front	2
2	OBI	3
2.1	OBI	3
2.1.1	Images	3
2.1.2	Bias	3
2.1.3	Parameters	4
2.1.4	Events	4
2.2	Compared Parameters	5
2.3	Aspect	6
2.4	Star Slots	9
2.4.1	Slot 3	9
2.4.2	Slot 4	10
2.4.3	Slot 5	11
2.4.4	Slot 6	12
2.4.5	Slot 7	13
2.5	FID Slots	14
2.5.1	Slot 0	14
2.5.2	Slot 1	15
2.5.3	Slot 2	16
3	Point Sources	17
A	Summary	18
A.1	Status	18
A.2	Comments	18

1 Front

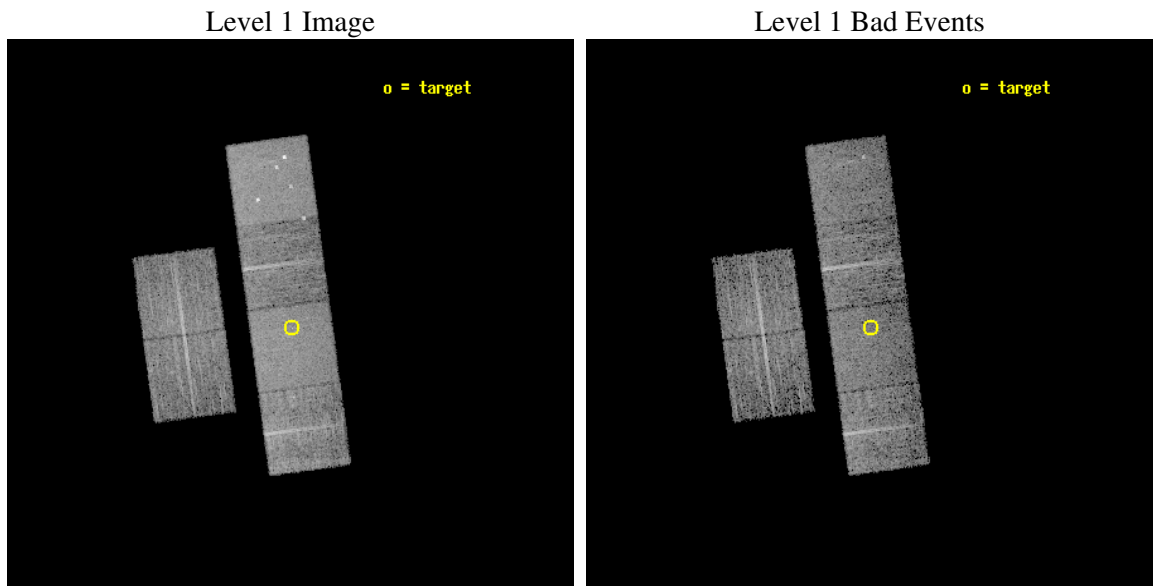
seq_num	701052
obs_id	5629
title	THE X-RAY PROPERTIES OF HIGHER REDSHIFT RED AGN
observer	Dr. Belinda Wilkes
object	2MASS 111354+124439
dtcycle	0
cycle	P
ra_targ	168.477917
dec_targ	12.744194
ra_nom	168.48086332266
dec_nom	12.753329368651
roll_nom	82.289465720369
revision	2
ontime	6060.7999774218
livetime	5984.054478732
ontime2	6060.7999774218
ontime3	6060.7999774218
ontime5	6060.7999774218
ontime6	6060.7999774218
ontime7	6060.7999774218
ontime8	6060.7999774218
l2events	69778



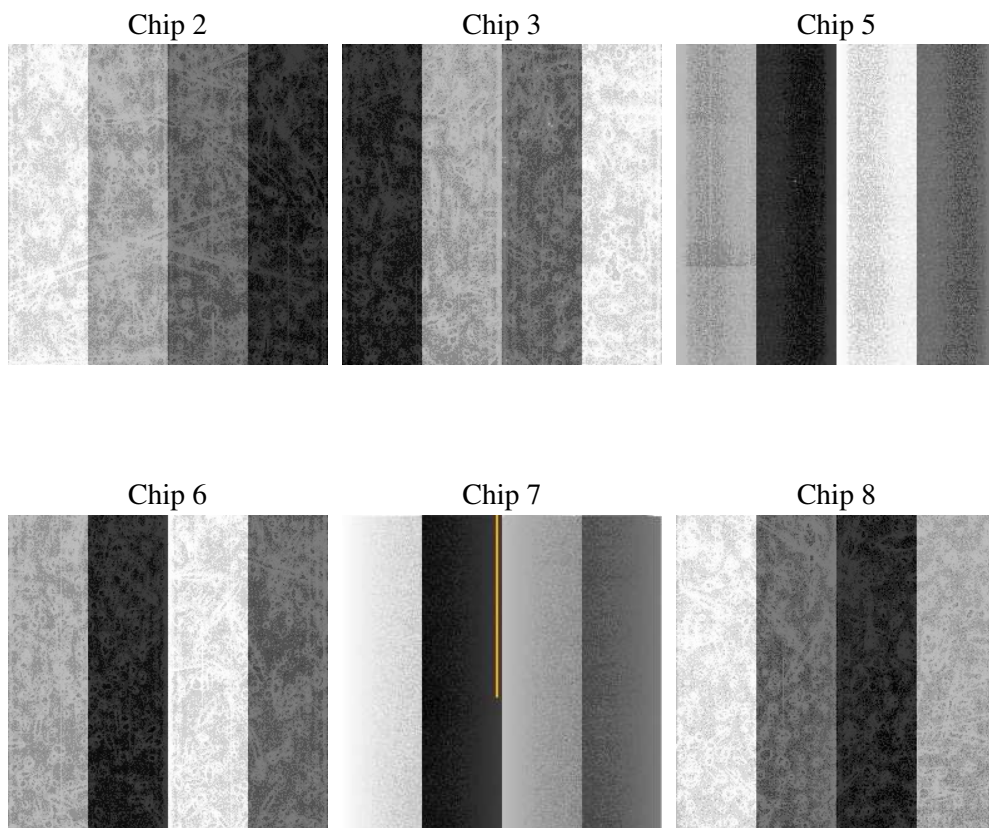
2 OBI

2.1 OBI

2.1.1 Images



2.1.2 Bias



2.1.3 Parameters

obi_num	0
ascdsver	7.6.7
caldsver	3.2.1
date	2006-02-22T21:24:37
revision	2

sched_exp_time	6100.000000
ontime	6063.9360544682
ontime2	6063.9360544682
ontime3	6063.9360345602
ontime5	6063.9360544682
ontime6	6063.9360544682
ontime7	6063.9360544682
ontime8	6063.9360345602
l1events	314728

2.1.4 Events

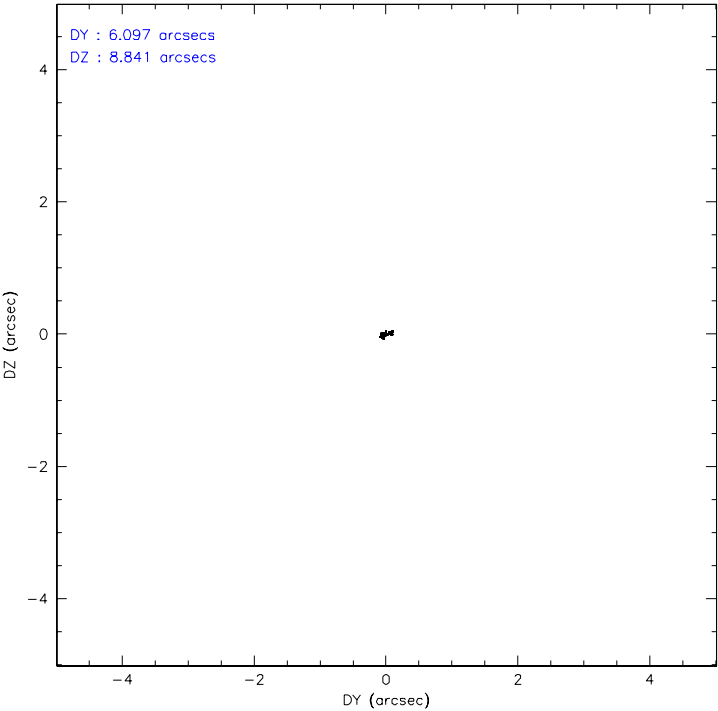
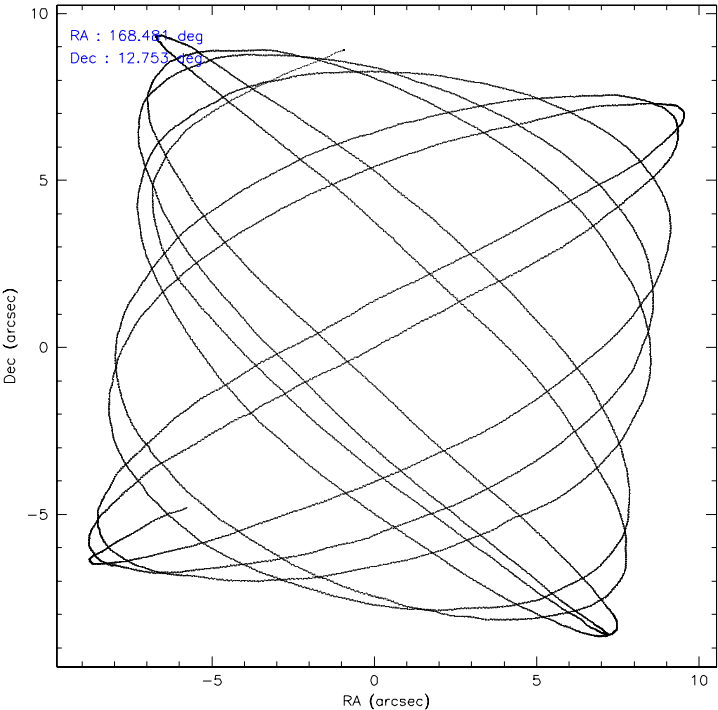
	ccd 2	ccd 3	ccd 5	ccd 6	ccd 7	ccd 8
level 1 events	45743	42389	68437	43814	59955	54390
rejected events	40293	37217	37124	38358	36744	42157
rejected %	88%	87%	54%	87%	61%	77%

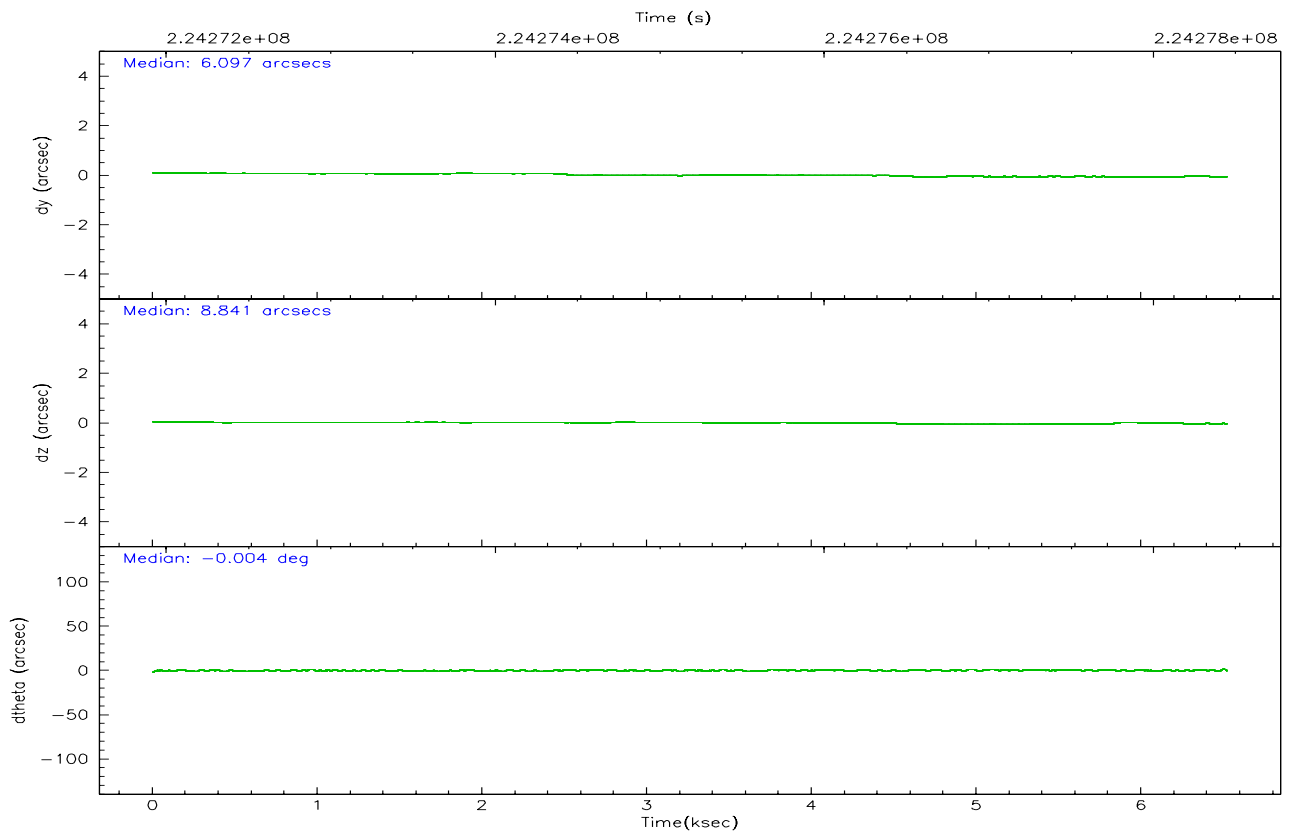
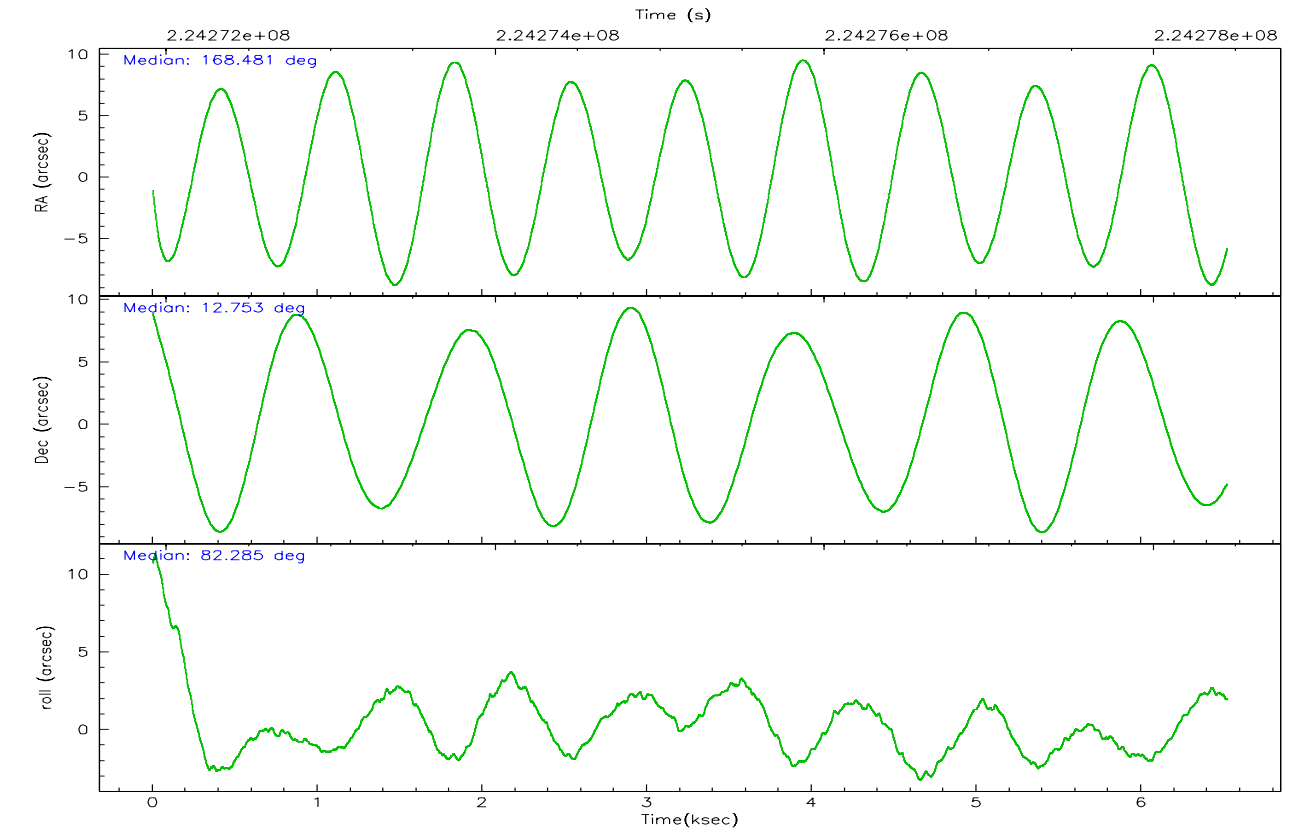
	ccd 2	ccd 3	ccd 5	ccd 6	ccd 7	ccd 8
grade 0 events	2387	2262	3607	2204	1408	3988
	5%	5%	5%	5%	2%	7%
grade 1 events	26	29	99	15	39	43
	0%	0%	0%	0%	0%	0%
grade 2 events	1178	1040	9482	1145	5721	2716
	2%	2%	13%	2%	9%	4%
grade 3 events	504	493	676	517	1067	1242
	1%	1%	0%	1%	1%	2%
grade 4 events	502	475	583	497	1111	1128
	1%	1%	0%	1%	1%	2%
grade 5 events	1762	1970	2979	2060	3777	2565
	3%	4%	4%	4%	6%	4%
grade 6 events	882	904	16973	1096	13915	3177
	1%	2%	24%	2%	23%	5%
grade 7 events	38502	35216	34038	36280	32917	39531
	84%	83%	49%	82%	54%	72%

2.2 Compared Parameters

Parameter	Planned	Actual	Parameter	Planned	Actual
Instrument	ACIS	ACIS	Obspar format version number	6	6
Detector	ACIS-235678	ACIS-235678	Obspar file type	PREDICTED	ACTUAL
Grating	NONE	NONE	Obspar update status	NONE	UPDATED
Data mode	FAINT	FAINT	On-chip summing requested	N	N
Observation mode	POINTING	POINTING	Subarray requested	NONE	NONE
Pointing RA	168.491880	168.4808633226557	Alternating exposures requested	N	N
Pointing Dec	12.728347	12.75332936865053	Primary exposure time	0.000000	3.2
Pointing Roll	82.130399	82.28946572036908			
SIM focus pos (mm)	-0.684267	-0.6828225247311905			
SIM defocus (mm)	0	0.001444936568705701			
SIM translation stage pos (mm)	-190.132523	-190.1425803651734			
SIM translation stage offset (mm)	0	0.01005778216563158			
Observation start time	224272344.184000	224271263.81306			
Observation start date	2005-02-08T17:51:20	2005-02-08T17:34:23			
Observation end time	224278444.184000	224279508.40093			
Observation end date	2005-02-08T19:33:00	2005-02-08T19:51:48			
Read mode	TIMED	TIMED			

2.3 Aspect



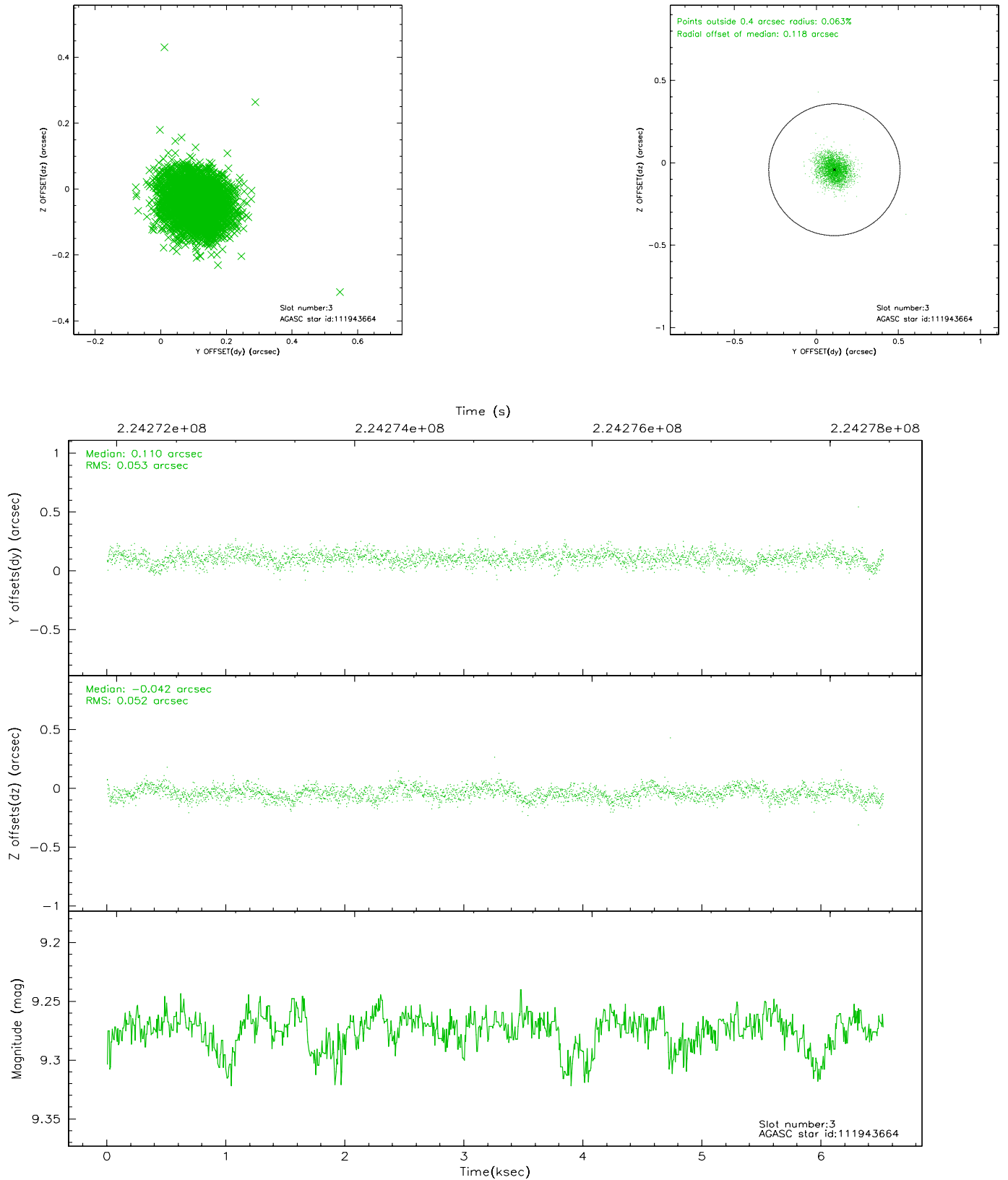


Slot Statistics

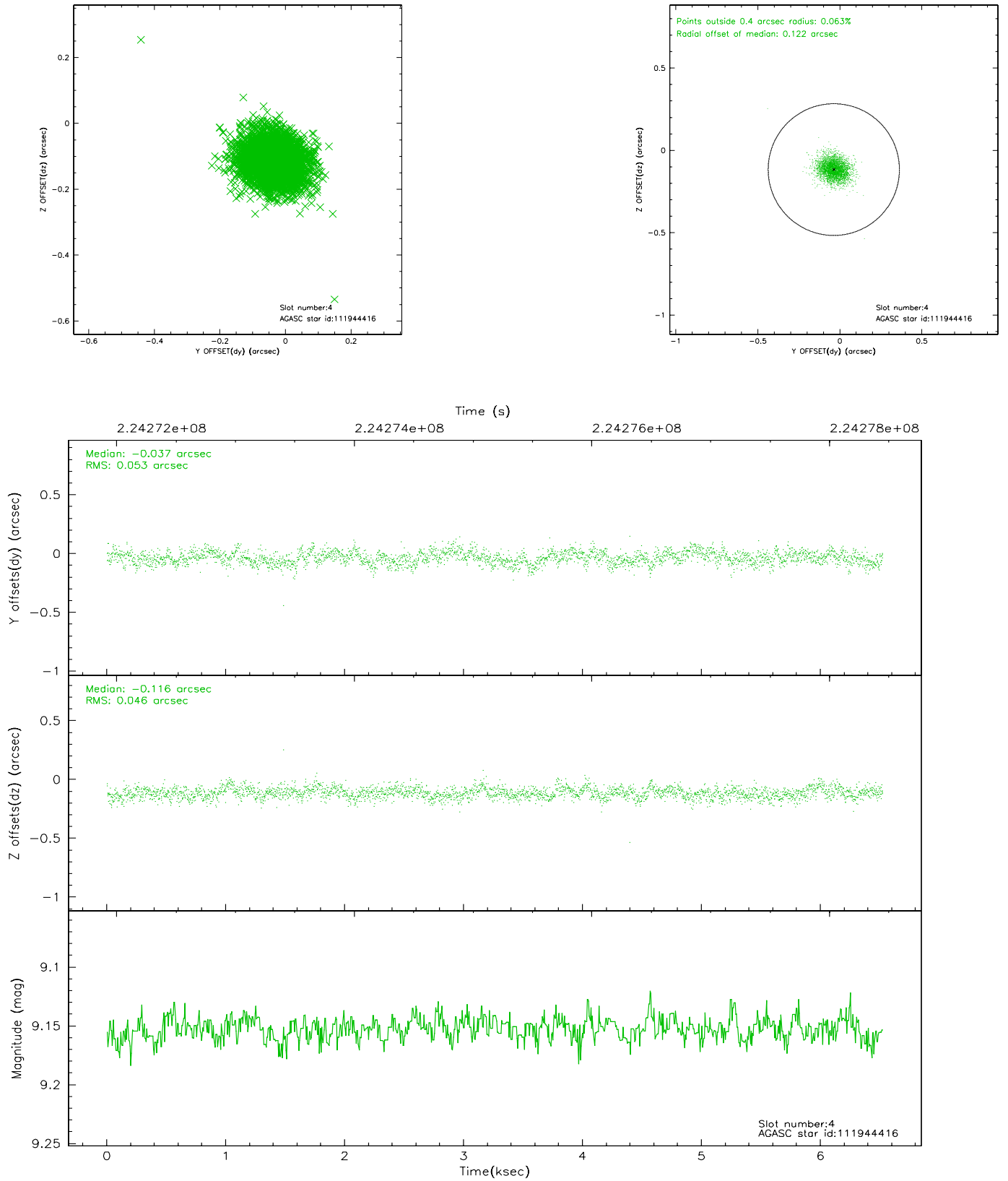
slot	status	id	mag	n_pts	med_dy	med_dz	dr1	dr2	ra	dec	mean_y	mean_z
0	FID	ACIS-S-2	7.10	1591	-0.043	-0.039	0.006	0.011	0.000000	0.000000	-758.88	-1730.03
1	FID	ACIS-S-4	7.21	1591	0.071	0.031	0.005	0.009	0.000000	0.000000	2154.11	177.58
2	FID	ACIS-S-5	7.23	1591	-0.059	0.016	0.006	0.011	0.000000	0.000000	-1810.58	172.27
3	GUIDE	111943664	9.27	3179	0.110	-0.042	0.078	0.125	168.455104	13.231647	1777.72	375.74
4	GUIDE	111944416	9.15	3182	-0.037	-0.116	0.073	0.121	168.281221	13.248301	1754.39	987.57
5	GUIDE	111944848	7.86	3182	-0.166	-0.023	0.051	0.085	168.075212	13.220782	1558.09	1689.67
6	GUIDE	112858352	7.32	3182	0.111	0.010	0.057	0.092	168.984739	12.613569	-169.48	-1771.06
7	GUIDE	112460024	8.40	3181	-0.016	0.173	0.067	0.114	169.148778	12.462466	-628.12	-2418.07

2.4 Star Slots

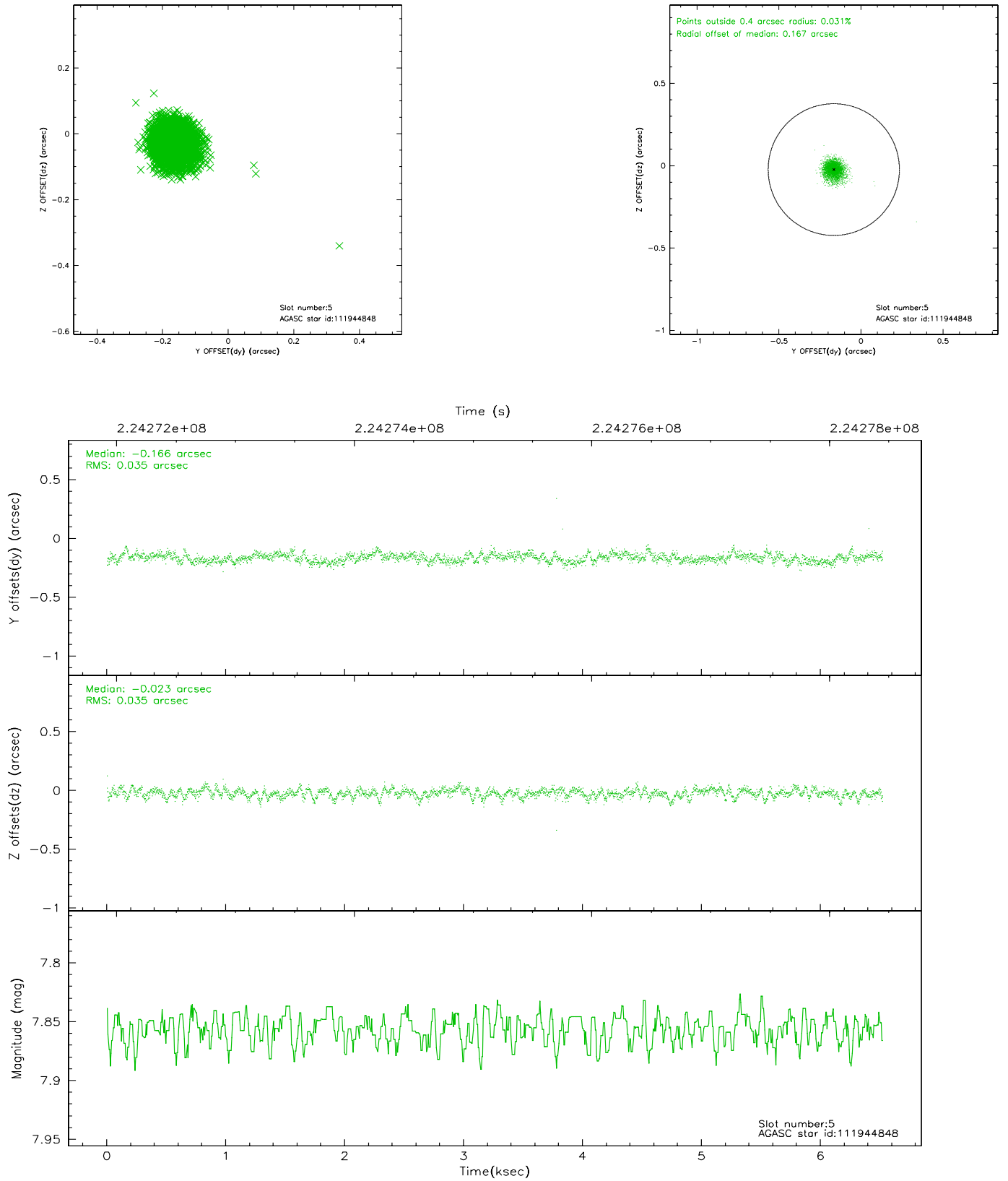
2.4.1 Slot 3



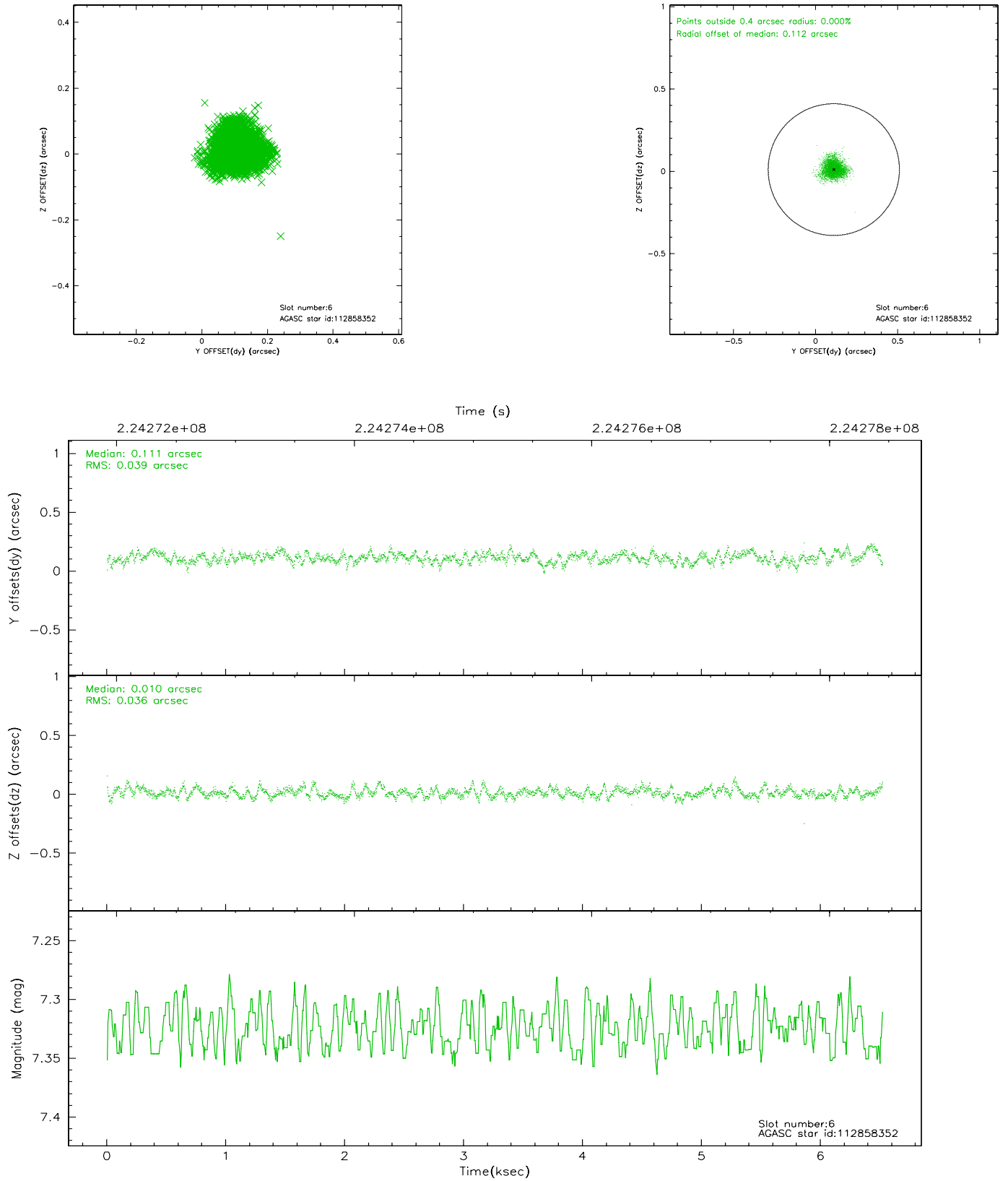
2.4.2 Slot 4



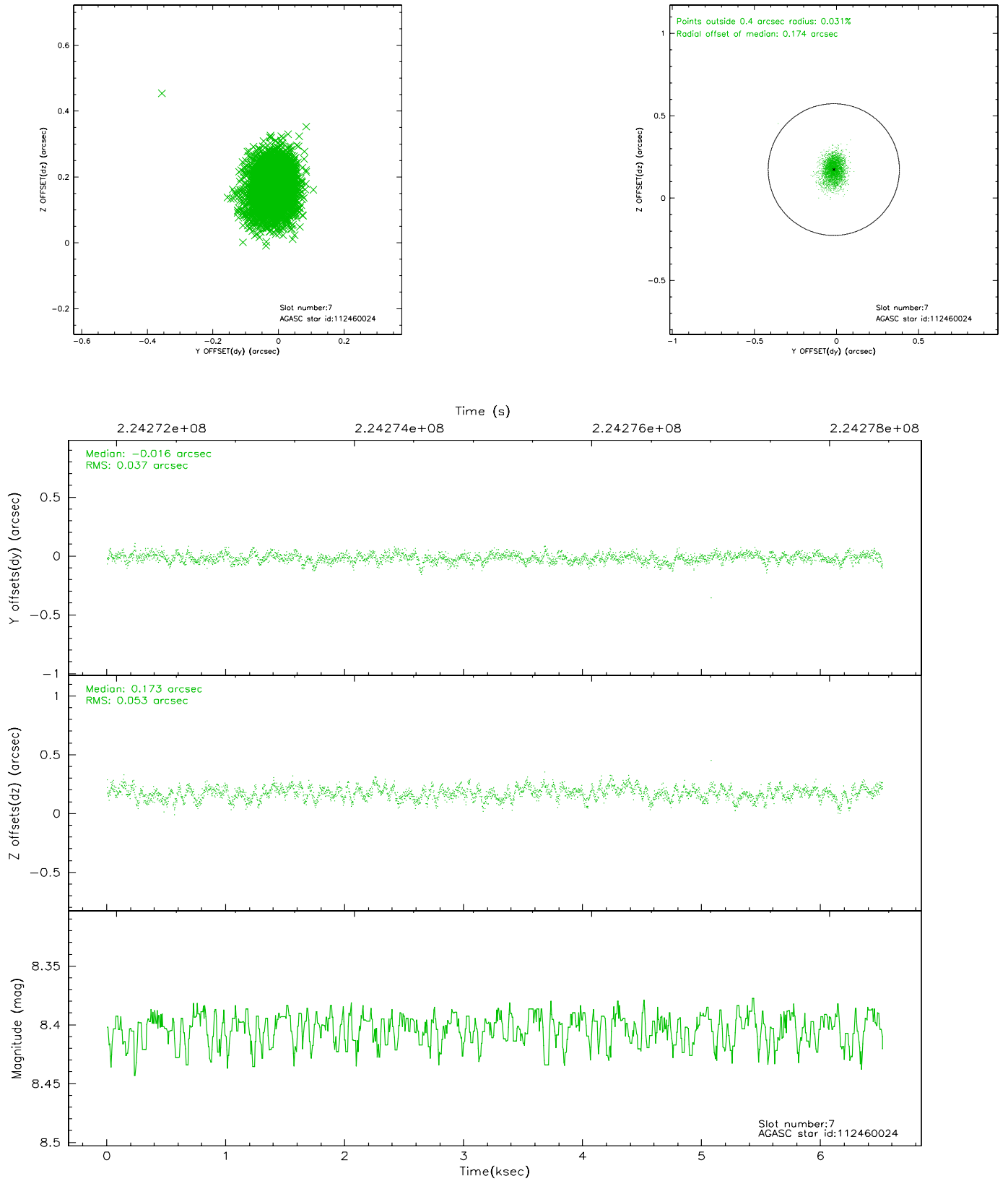
2.4.3 Slot 5



2.4.4 Slot 6

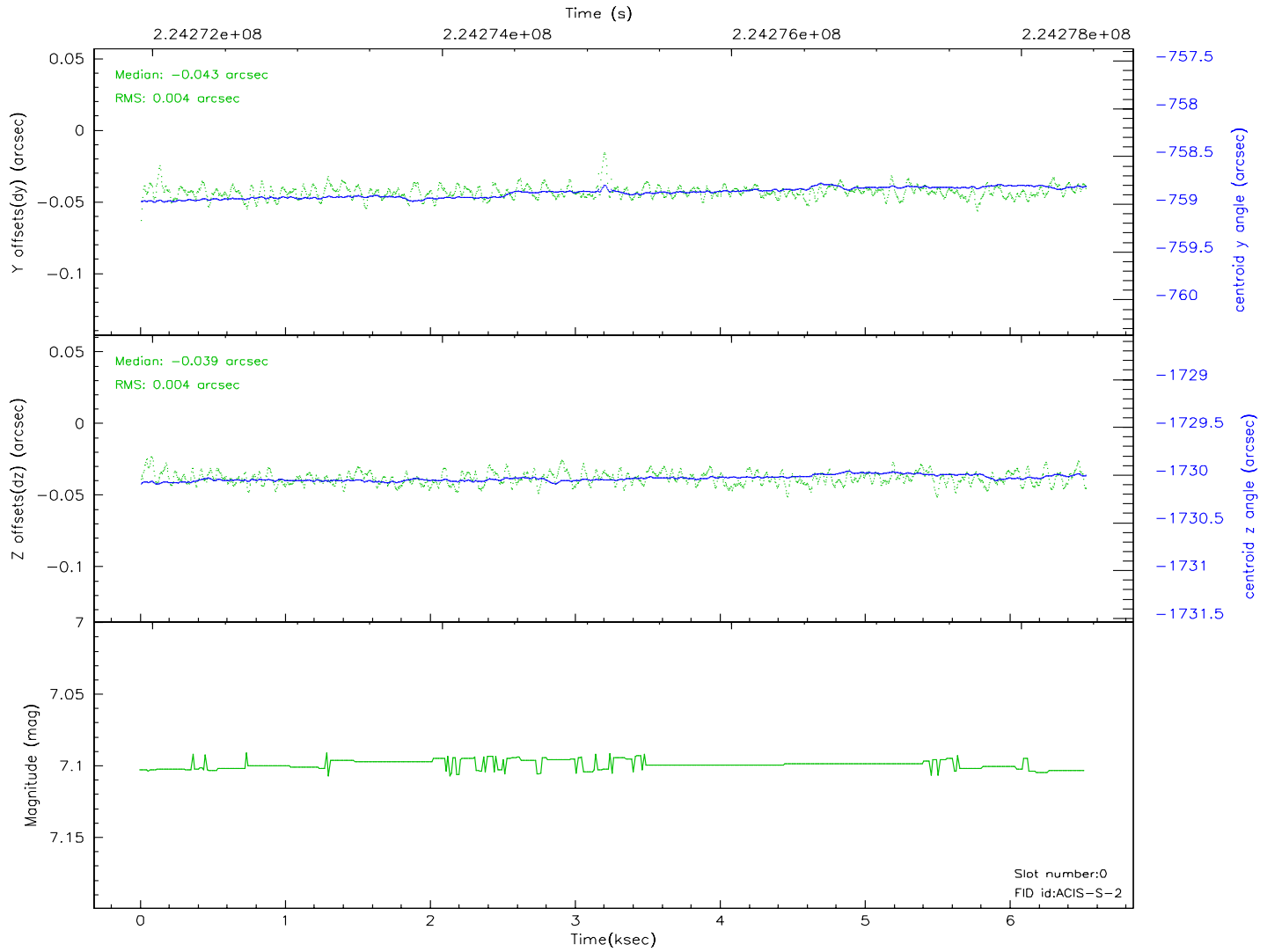
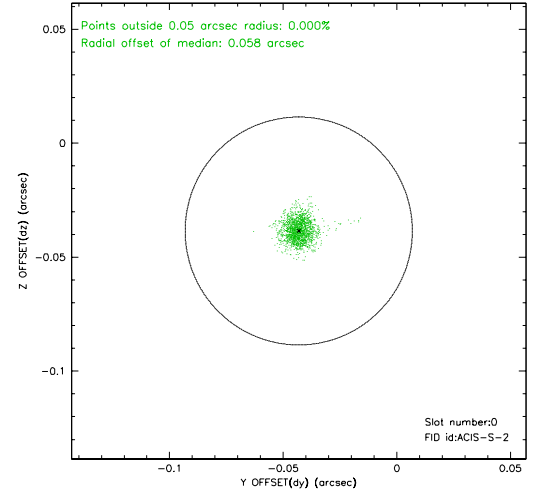
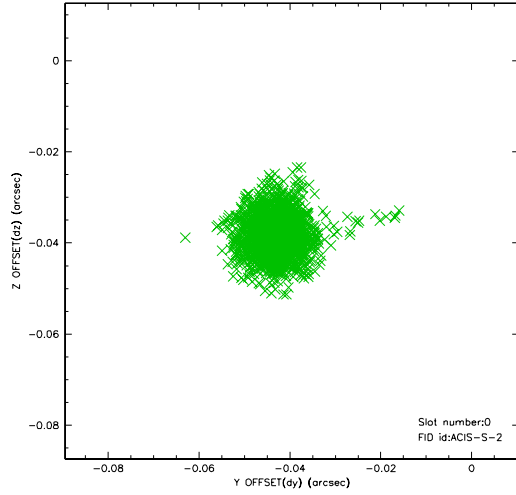


2.4.5 Slot 7

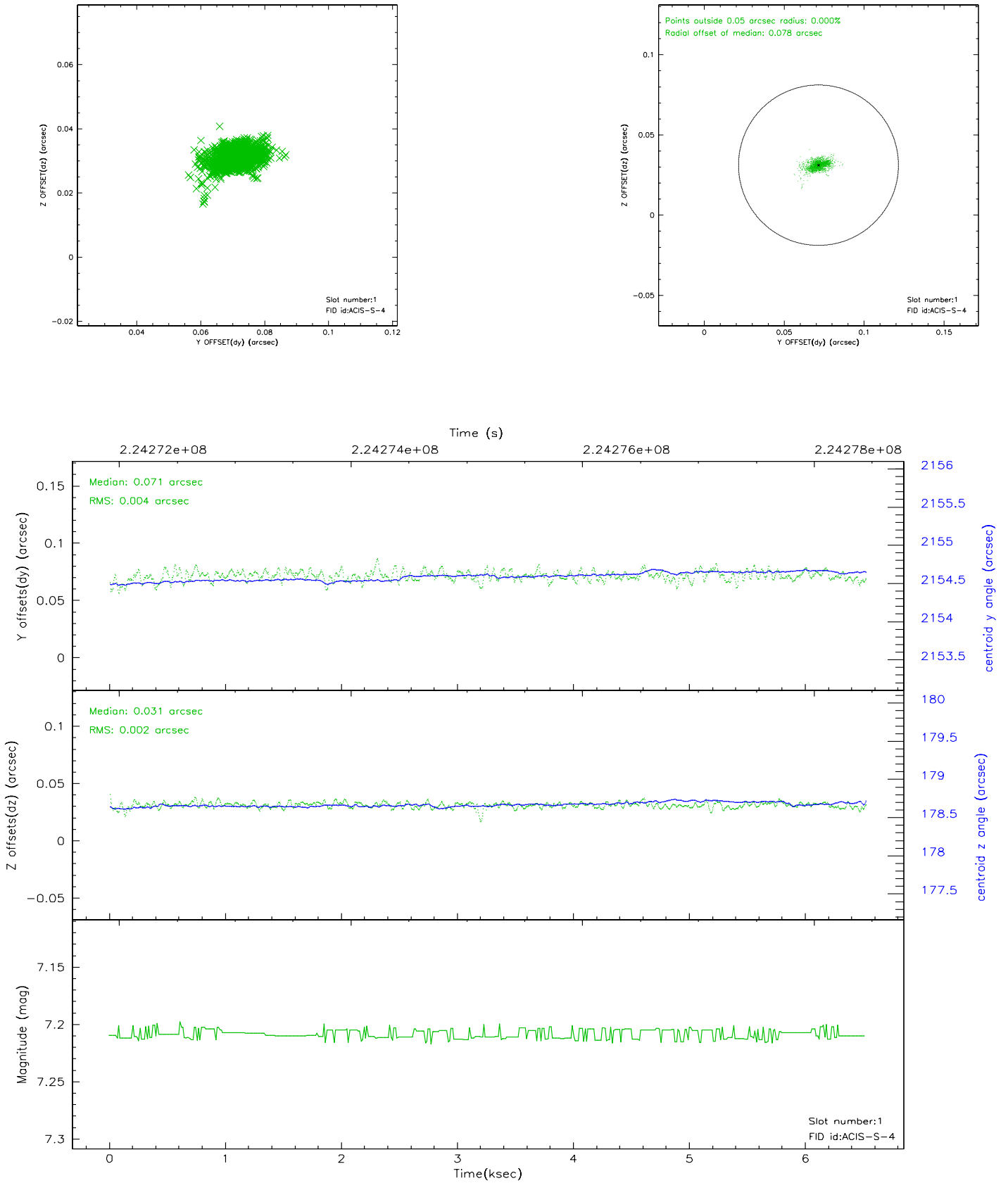


2.5 FID Slots

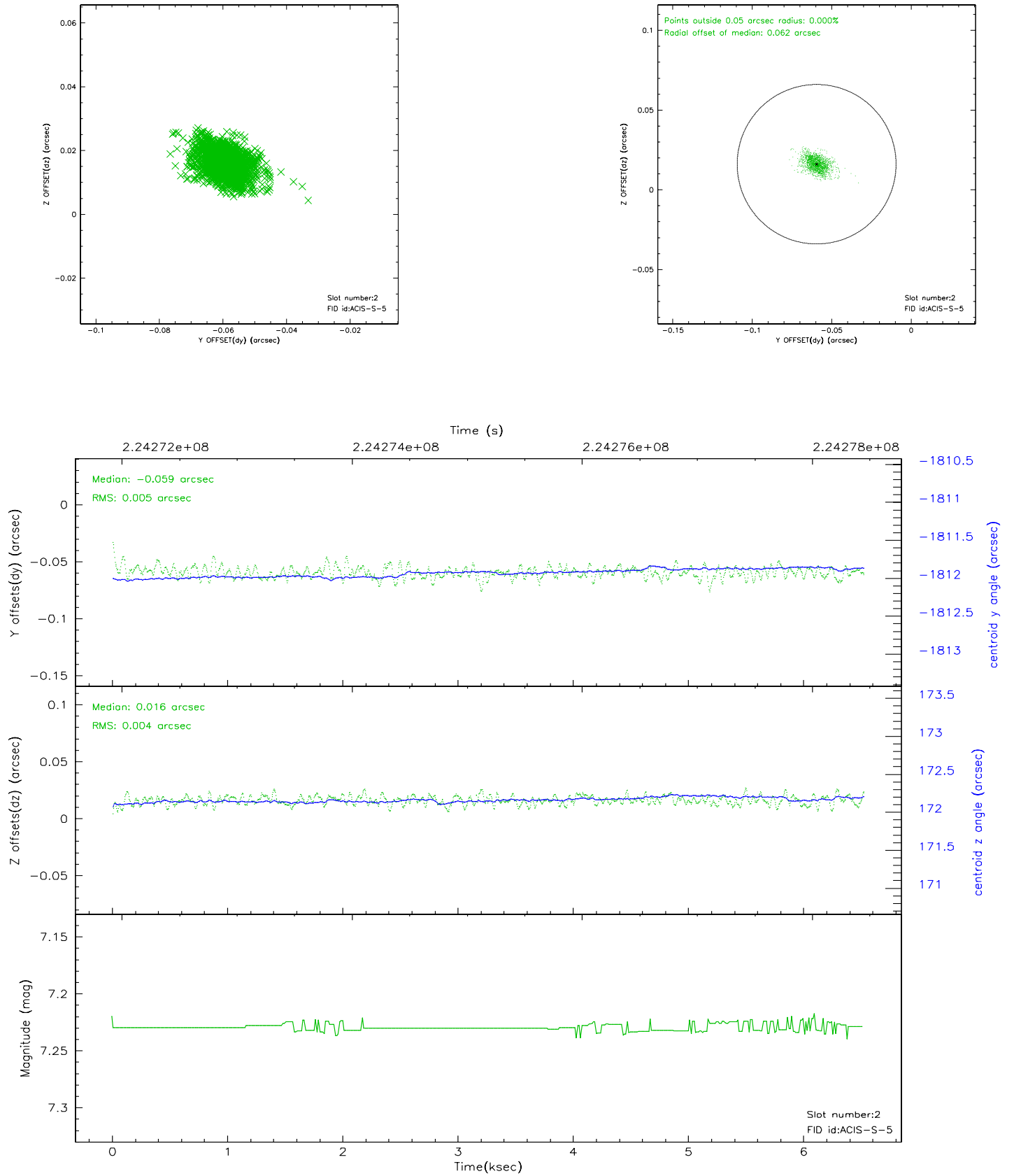
2.5.1 Slot 0



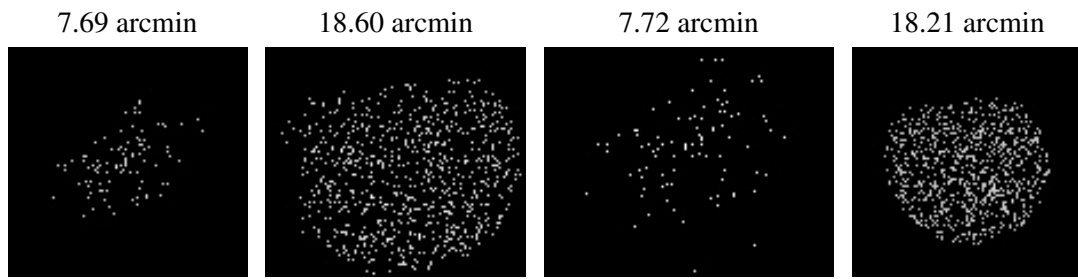
2.5.2 Slot 1



2.5.3 Slot 2



3 Point Sources



A Summary

A.1 Status

V&V Scientist	Jen Lauer
V&V Date (YYYY-MM-DD)	2006.02.23
V&V Edition	1
V&V Disposition and Status	OK
V&V Charge Time	6.060799

A.2 Comments