

V&V Reference Report

L2 ASCDS Version : 7.6.7.1

Observation 5628 - L2 Version 002
Chandra X-Ray Center

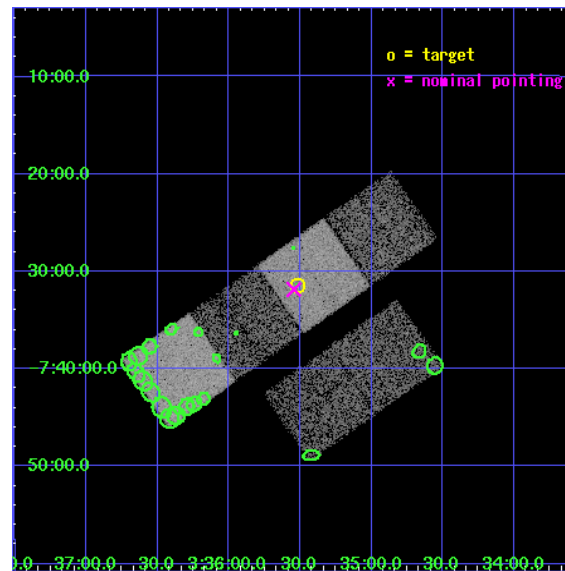
L2 Processing Date : Apr 8 2006

Contents

1	Front	2
2	OBI	3
2.1	OBI	3
2.1.1	Images	3
2.1.2	Bias	3
2.1.3	Parameters	4
2.1.4	Events	4
2.2	Compared Parameters	5
2.3	Aspect	6
2.4	Star Slots	9
2.4.1	Slot 3	9
2.4.2	Slot 4	10
2.4.3	Slot 5	11
2.4.4	Slot 6	12
2.4.5	Slot 7	13
2.5	FID Slots	14
2.5.1	Slot 0	14
2.5.2	Slot 1	15
2.5.3	Slot 2	16
3	Point Sources	17
A	Summary	18
A.1	Status	18
A.2	Comments	18

1 Front

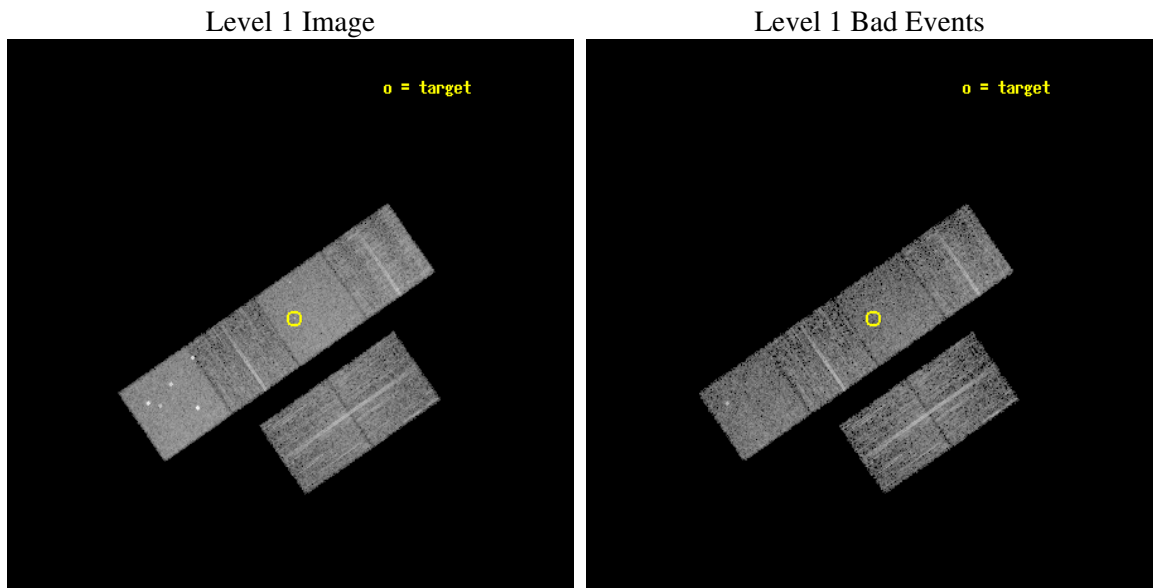
seq_num	701051
obs_id	5628
title	THE X-RAY PROPERTIES OF HIGHER REDSHIFT RED AGN
observer	Dr. BELINDA WILKES
object	2MASS 033531-073127
dtcycle	0
cycle	P
ra_targ	53.879167
dec_targ	-7.52425
ra_nom	53.886037689122
dec_nom	-7.5310247595081
roll_nom	325.18870405228
revision	2
ontime	5551.9999793172
livetime	5481.697212566
ontime2	5551.9999793172
ontime3	5551.9999793172
ontime5	5551.9999793172
ontime6	5551.9999793172
ontime7	5551.9999793172
ontime8	5551.9999793172
l2events	71484



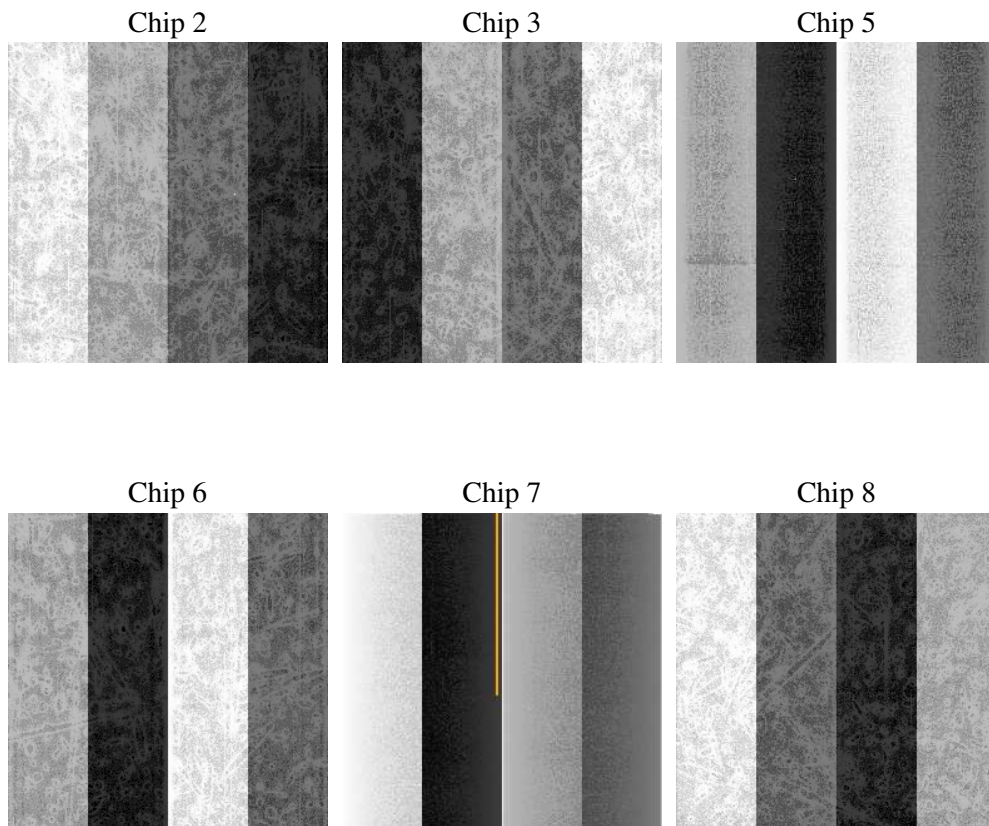
2 OBI

2.1 OBI

2.1.1 Images



2.1.2 Bias



2.1.3 Parameters

obi_num	0
ascdsver	7.6.7.1
caldsver	3.2.1
date	2006-04-08T18:01:00
revision	2

sched_exp_time	5400.000000
ontime	5781.9621202946
ontime2	5781.9621202946
ontime3	5781.9621202946
ontime5	5781.9621202946
ontime6	5781.9621202946
ontime7	5781.9621202946
ontime8	5781.9621202946
l1events	322074

2.1.4 Events

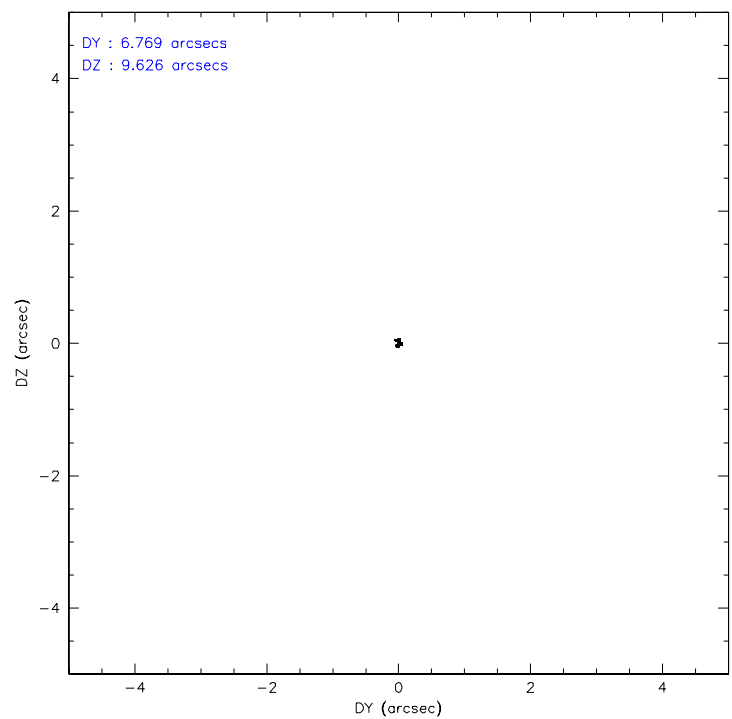
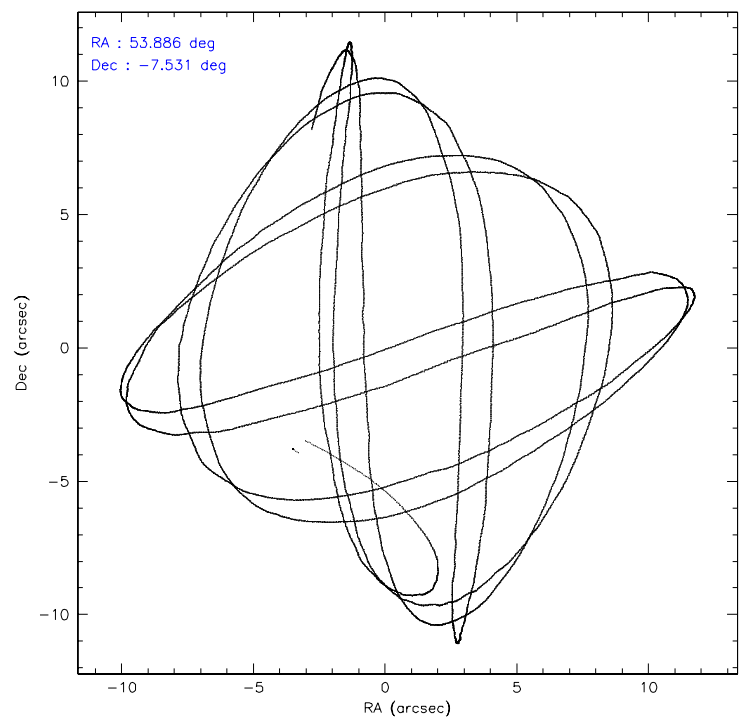
	ccd 2	ccd 3	ccd 5	ccd 6	ccd 7	ccd 8
level 1 events	45747	43556	69819	45102	60822	57028
rejected events	39963	37742	38032	39174	37305	44132
rejected %	87%	86%	54%	86%	61%	77%

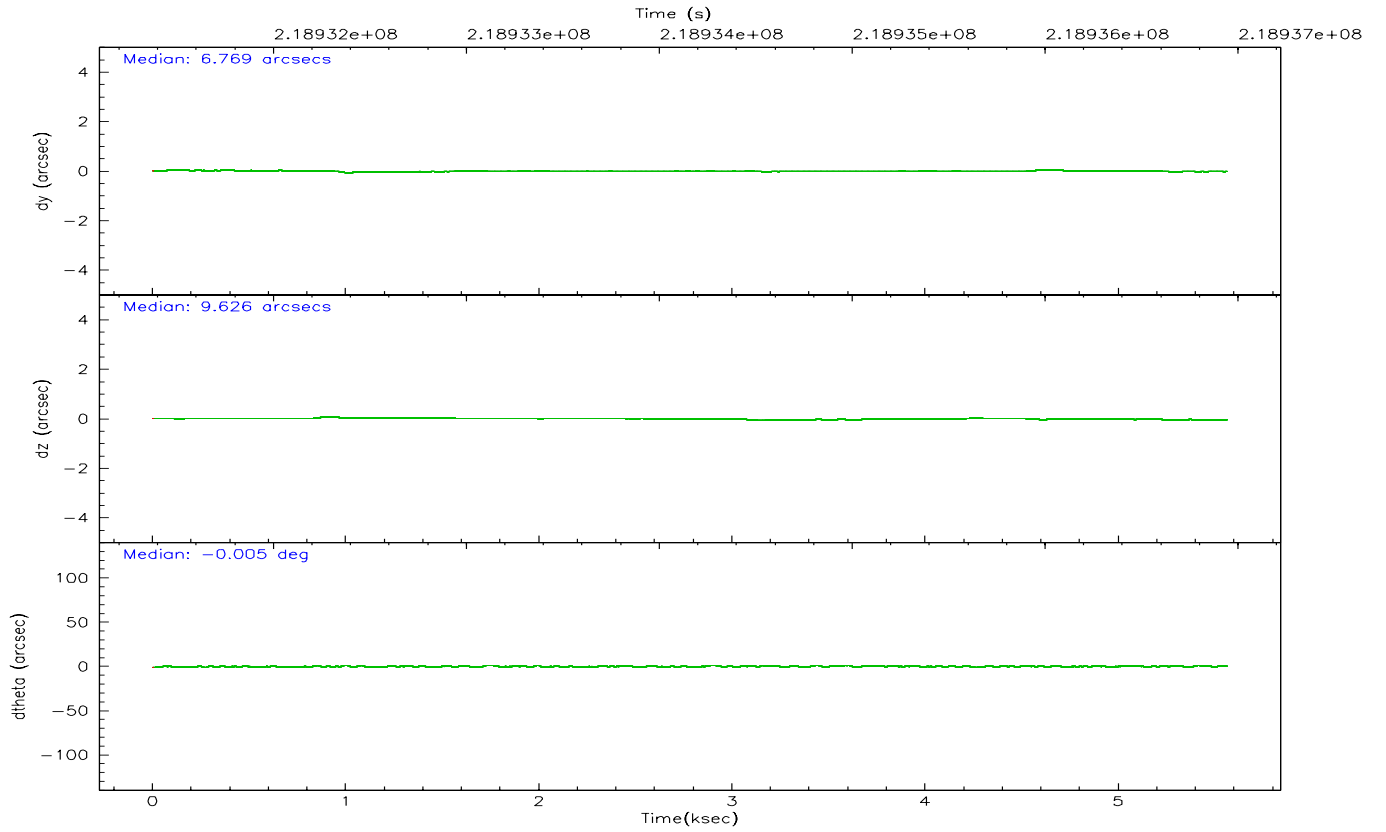
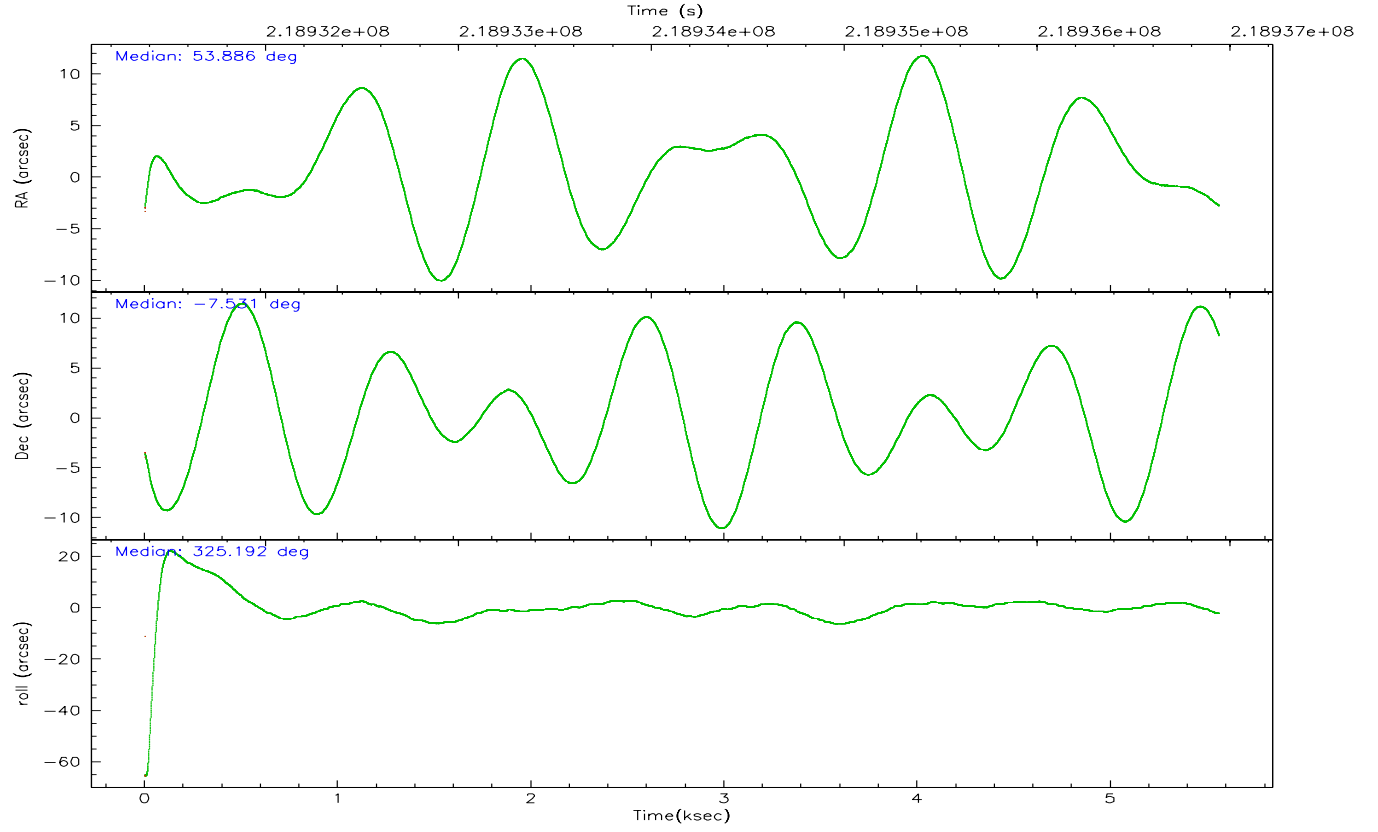
	ccd 2	ccd 3	ccd 5	ccd 6	ccd 7	ccd 8
grade 0 events	3016	2923	4483	2773	1577	4605
	6%	6%	6%	6%	2%	8%
grade 1 events	36	36	82	24	30	36
	0%	0%	0%	0%	0%	0%
grade 2 events	1126	1102	10315	1233	5960	2936
	2%	2%	14%	2%	9%	5%
grade 3 events	485	530	744	536	1275	1320
	1%	1%	1%	1%	2%	2%
grade 4 events	480	554	643	525	1241	1250
	1%	1%	0%	1%	2%	2%
grade 5 events	1657	1978	3337	2069	3903	2617
	3%	4%	4%	4%	6%	4%
grade 6 events	903	923	16900	1076	14429	3255
	1%	2%	24%	2%	23%	5%
grade 7 events	38044	35510	33315	36866	32407	41009
	83%	81%	47%	81%	53%	71%

2.2 Compared Parameters

Parameter	Planned	Actual	Parameter	Planned	Actual
Instrument	ACIS	ACIS	Obspar format version number	6	6
Detector	ACIS-235678	ACIS-235678	Obspar file type	PREDICTED	ACTUAL
Grating	NONE	NONE	Obspar update status	NONE	UPDATED
Data mode	FAINT	FAINT	On-chip summing requested	N	N
Observation mode	POINTING	POINTING	Subarray requested	NONE	NONE
Pointing RA	53.858672	53.88603768912165	Alternating exposures requested	N	N
Pointing Dec	-7.529158	-7.531024759508119	Primary exposure time	0.000000	3.2
Pointing Roll	325.028711	325.1887040522845			
SIM focus pos (mm)	-0.684267	-0.6828225247311905			
SIM defocus (mm)	0	0.001444936568705701			
SIM translation stage pos (mm)	-190.132523	-190.1400660498719			
SIM translation stage offset (mm)	0	0.00754346686406393			
Observation start time	218931540.184000	218930368.84719			
Observation start date	2004-12-08T22:17:56	2004-12-08T21:59:28			
Observation end time	218936940.184000	218937817.01003			
Observation end date	2004-12-08T23:47:56	2004-12-09T00:03:37			
Read mode	TIMED	TIMED			

2.3 Aspect



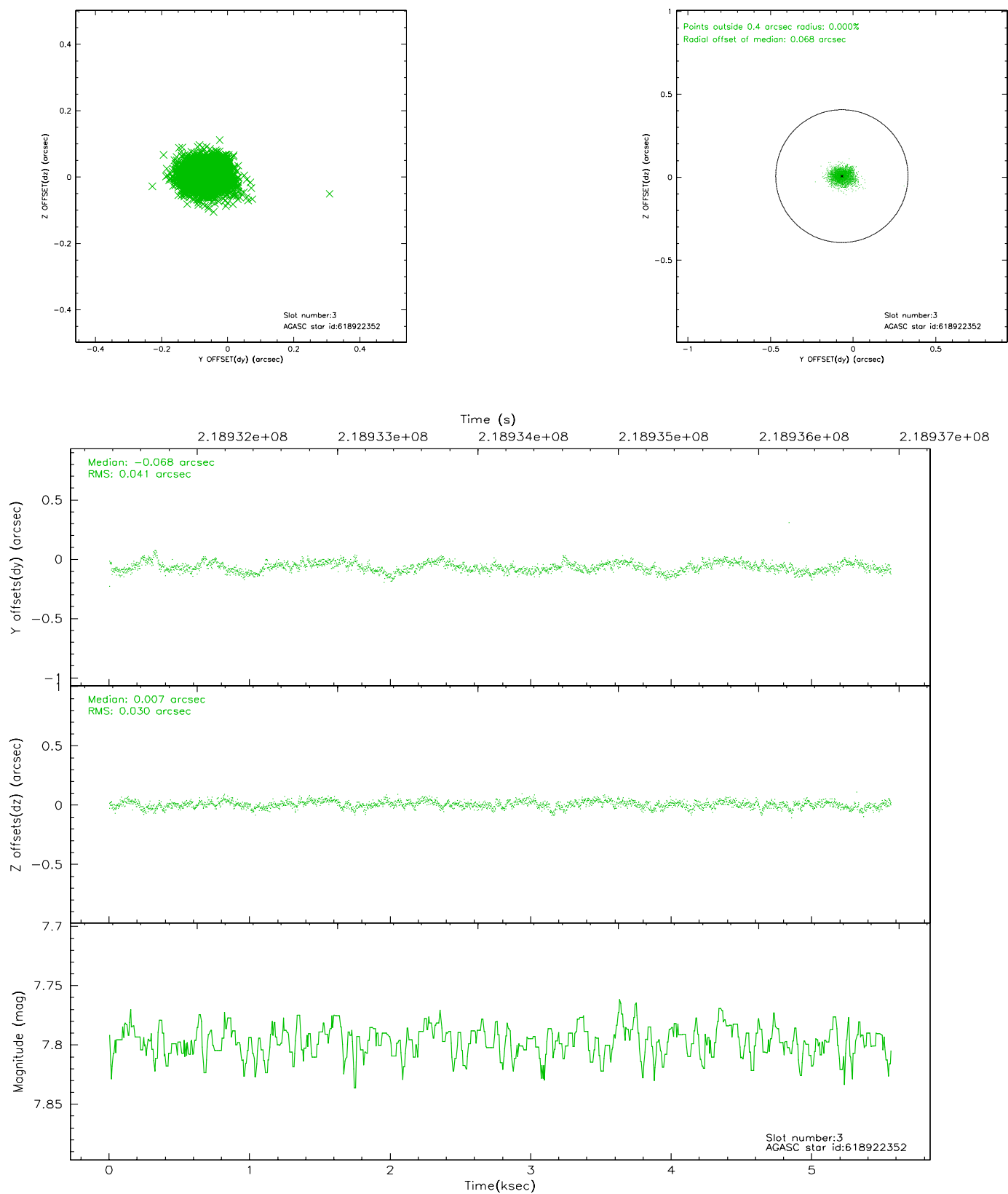


Slot Statistics

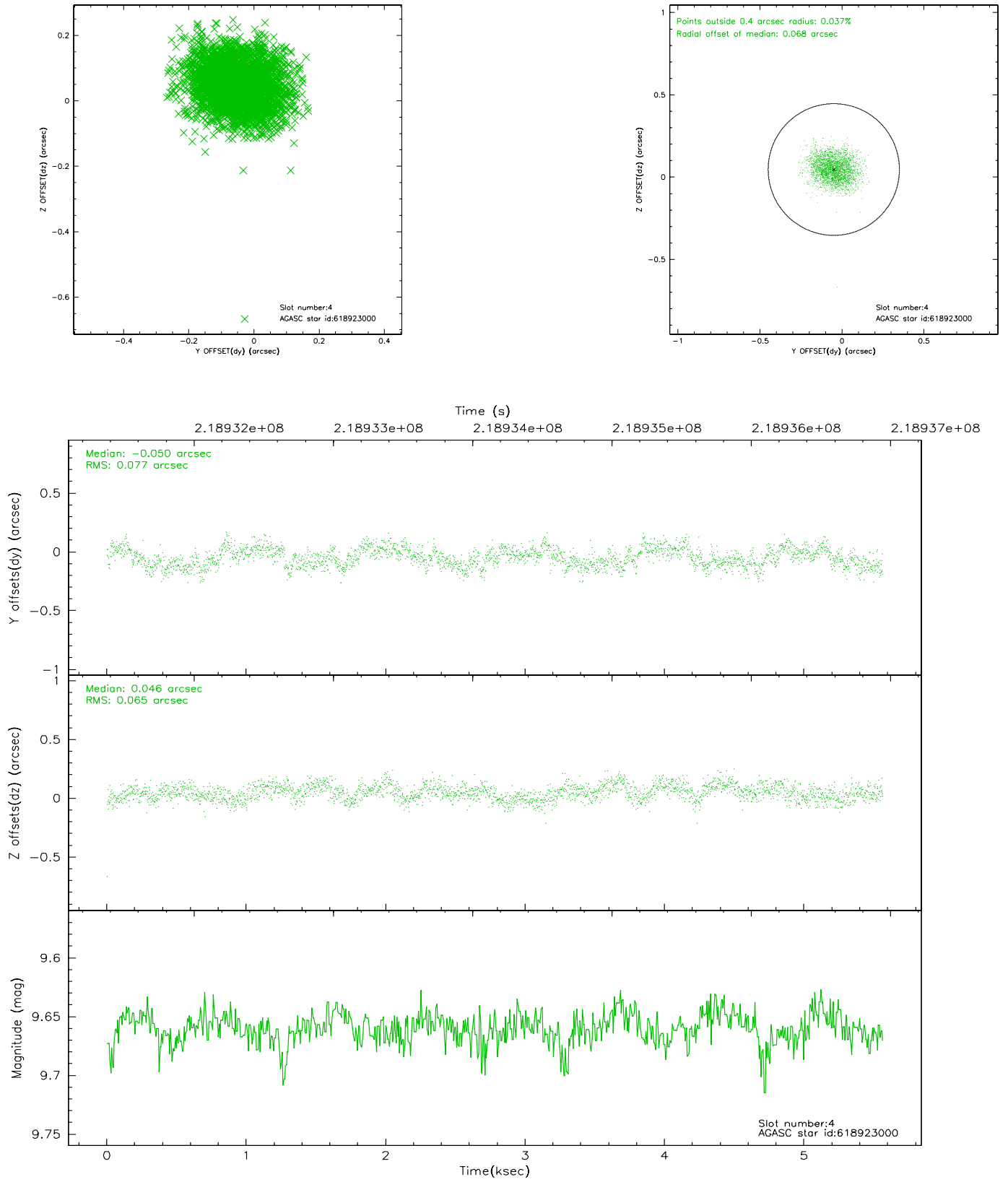
slot	status	id	mag	n_pts	med_dy	med_dz	dr1	dr2	ra	dec	mean_y	mean_z
0	FID	ACIS-S-2	7.09	1357	-0.042	-0.004	0.006	0.010	0.000000	0.000000	-759.53	-1730.88
1	FID	ACIS-S-4	7.21	1357	0.047	0.022	0.004	0.008	0.000000	0.000000	2153.32	176.56
2	FID	ACIS-S-5	7.23	1357	-0.037	-0.008	0.005	0.009	0.000000	0.000000	-1811.01	171.37
3	GUIDE	618922352	7.80	2709	-0.068	0.007	0.054	0.086	54.543309	-7.483348	1909.33	1534.36
4	GUIDE	618923000	9.66	2711	-0.050	0.046	0.108	0.172	53.574619	-7.147566	-1617.70	544.75
5	GUIDE	618923176	7.75	2714	-0.050	-0.065	0.063	0.098	53.663972	-7.375751	-886.45	54.37
6	GUIDE	618924040	9.69	2709	0.121	-0.030	0.098	0.162	54.024320	-7.160820	-275.00	1425.82
7	GUIDE	695084536	8.88	2713	0.045	0.043	0.066	0.114	54.462957	-7.665144	2048.81	833.88

2.4 Star Slots

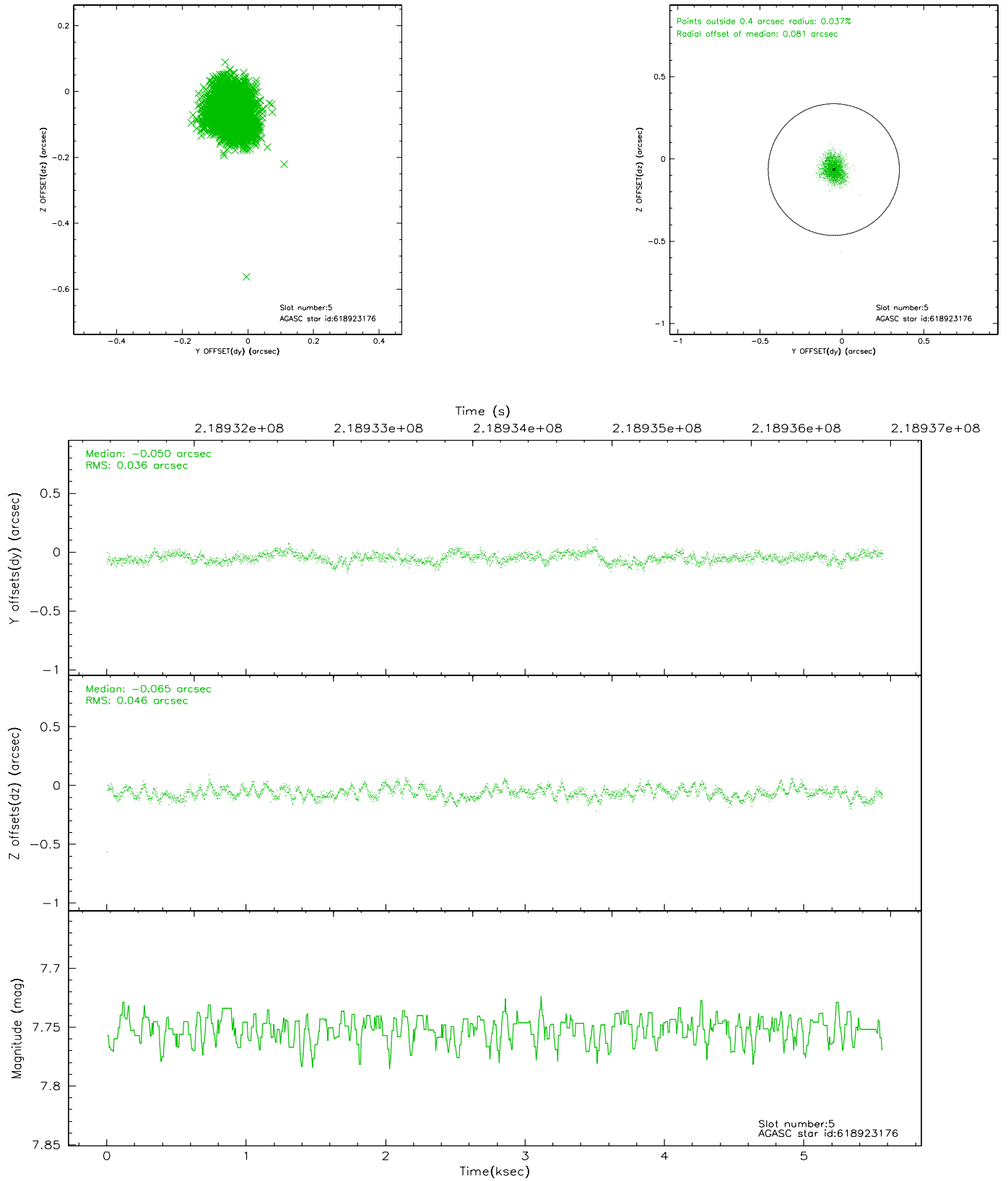
2.4.1 Slot 3



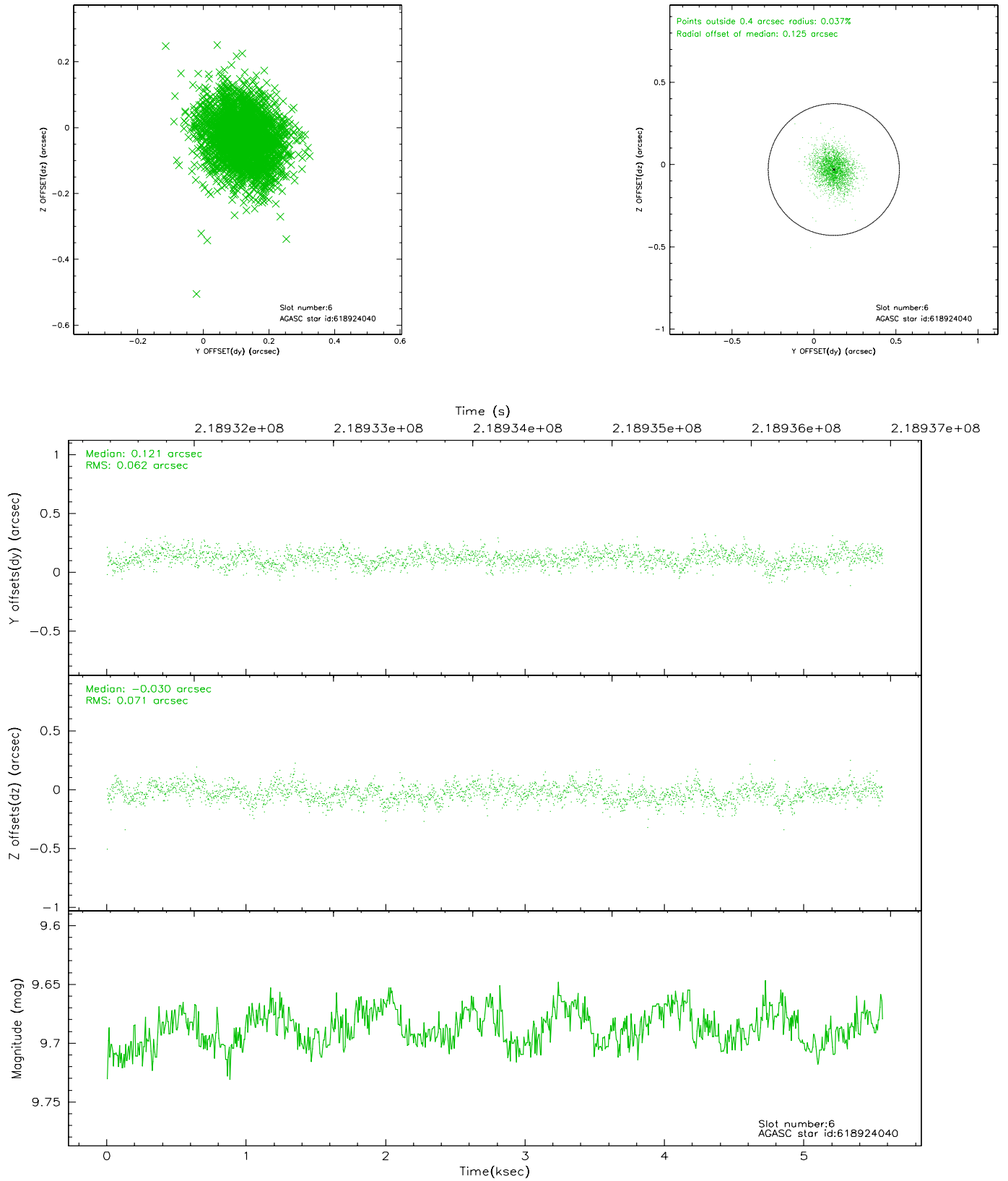
2.4.2 Slot 4



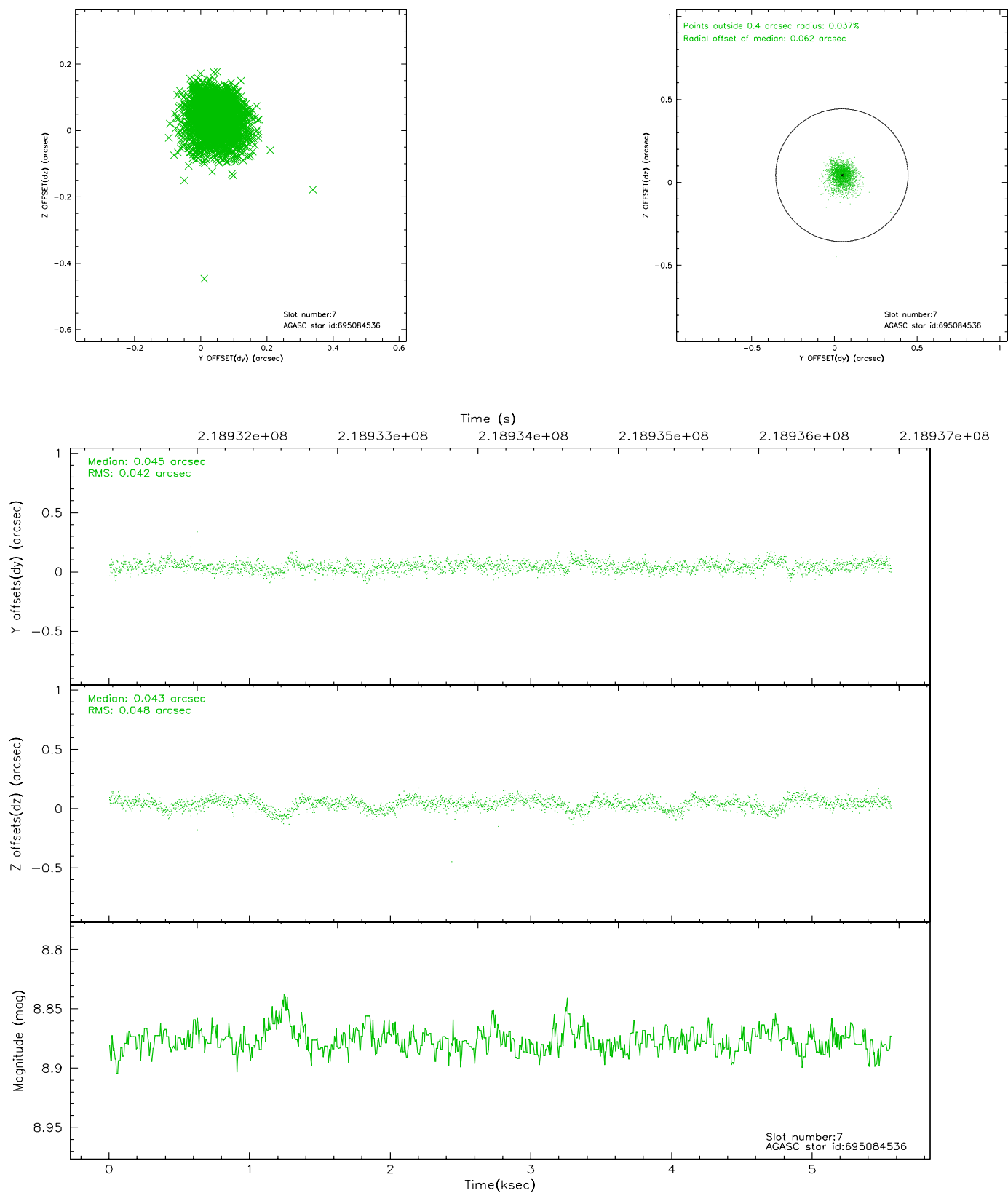
2.4.3 Slot 5



2.4.4 Slot 6

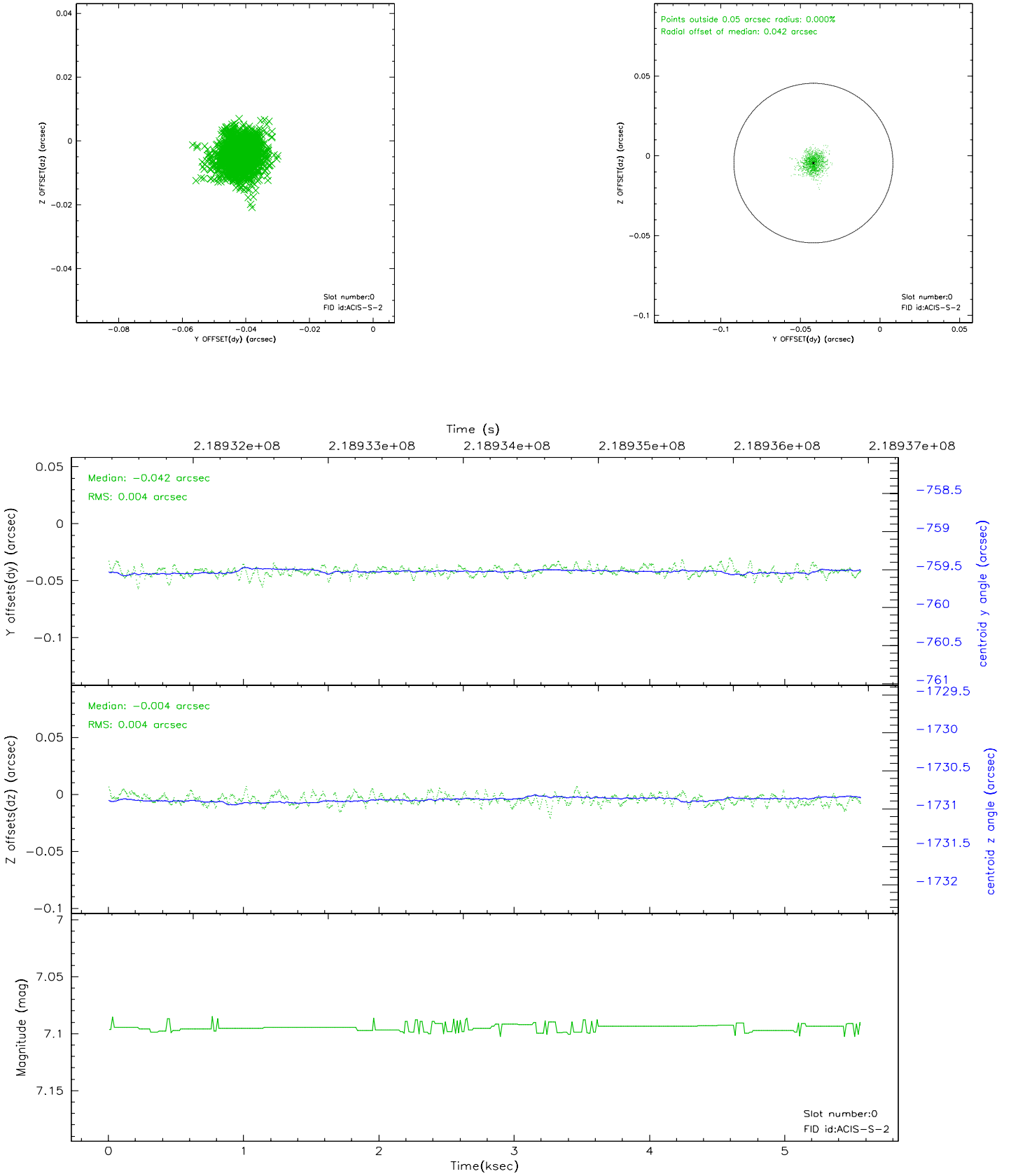


2.4.5 Slot 7

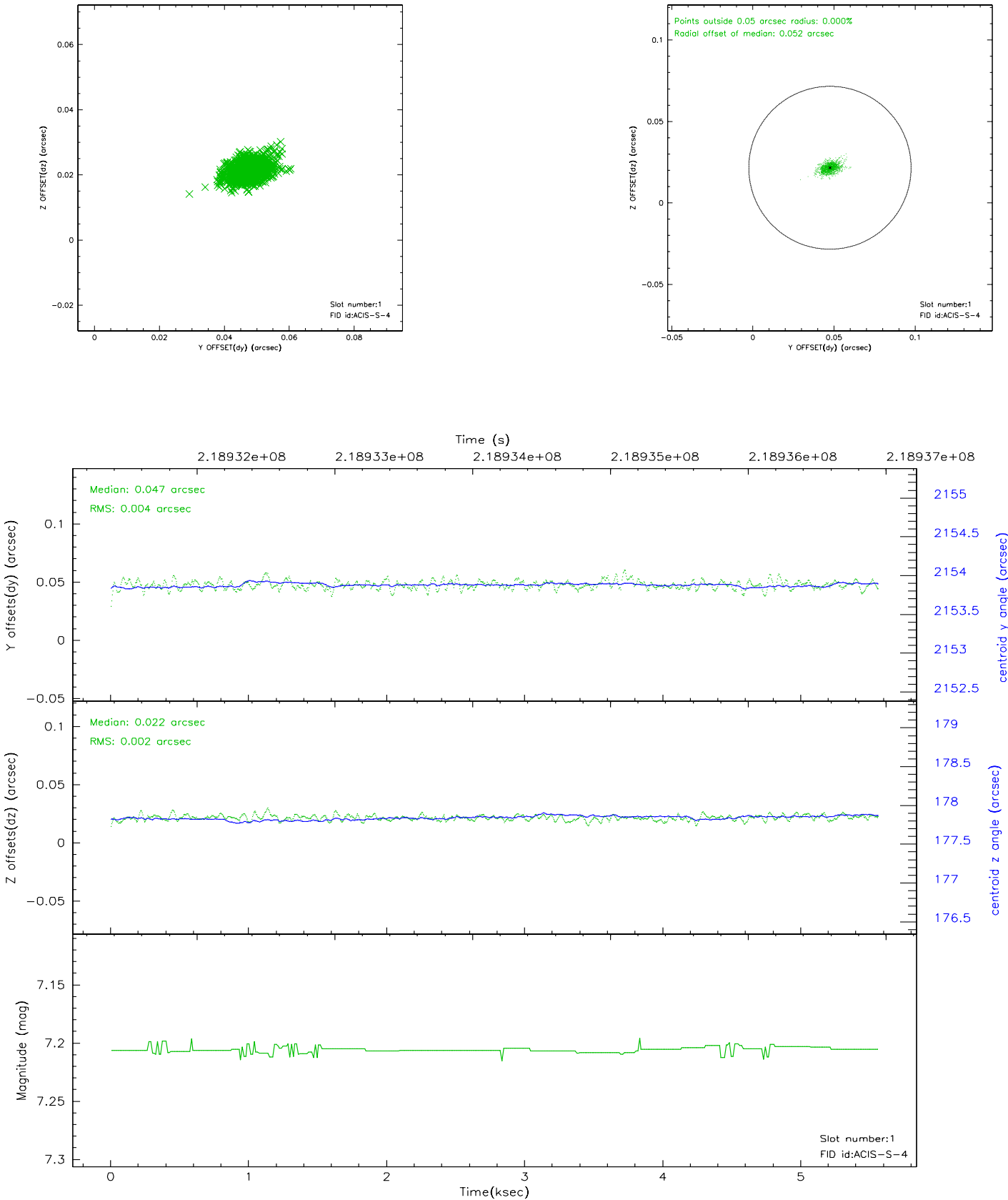


2.5 FID Slots

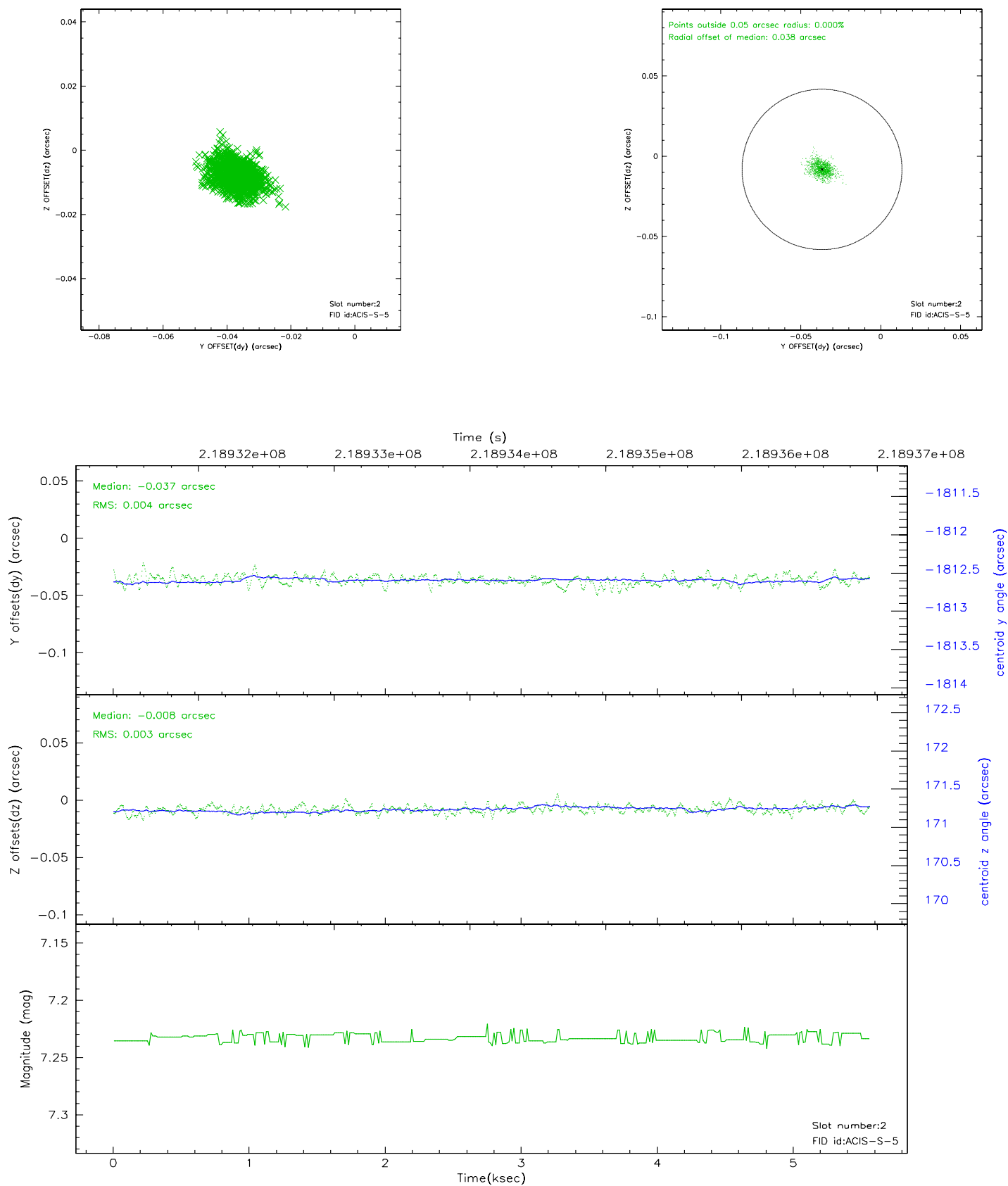
2.5.1 Slot 0



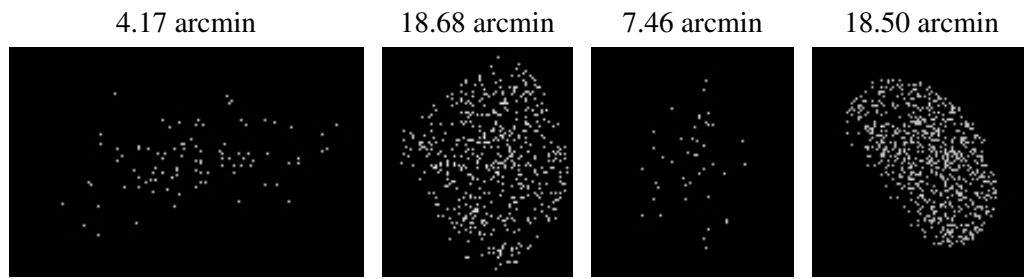
2.5.2 Slot 1



2.5.3 Slot 2



3 Point Sources



A Summary

A.1 Status

V&V Scientist	Jen Lauer
V&V Date (YYYY-MM-DD)	2006.04.10
V&V Edition	1
V&V Disposition and Status	OK
V&V Charge Time	5.551999

A.2 Comments