

V&V Reference Report

L2 ASCDS Version : 7.6.7.1

Observation 5618 - L2 Version 002
Chandra X-Ray Center

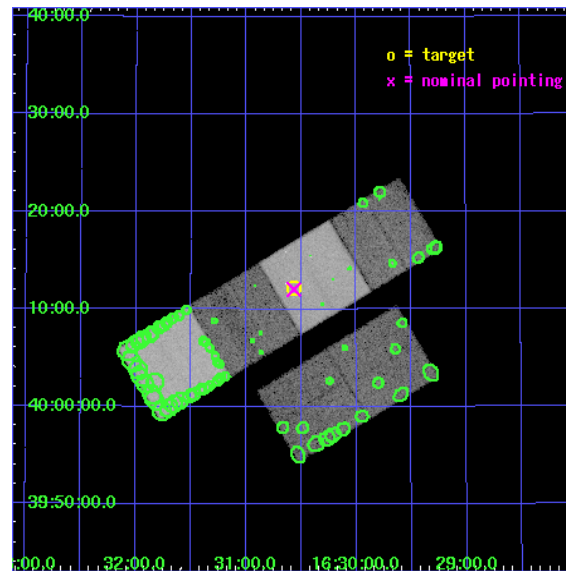
L2 Processing Date : Apr 4 2006

Contents

1	Front	2
2	OBI	3
2.1	OBI	3
2.1.1	Images	3
2.1.2	Bias	3
2.1.3	Parameters	4
2.1.4	Events	4
2.2	Compared Parameters	5
2.3	Aspect	6
2.4	Star Slots	9
2.4.1	Slot 3	9
2.4.2	Slot 4	10
2.4.3	Slot 5	11
2.4.4	Slot 6	12
2.4.5	Slot 7	13
2.5	FID Slots	14
2.5.1	Slot 0	14
2.5.2	Slot 1	15
2.5.3	Slot 2	16
3	Point Sources	17
A	Summary	18
A.1	Status	18
A.2	Comments	18

1 Front

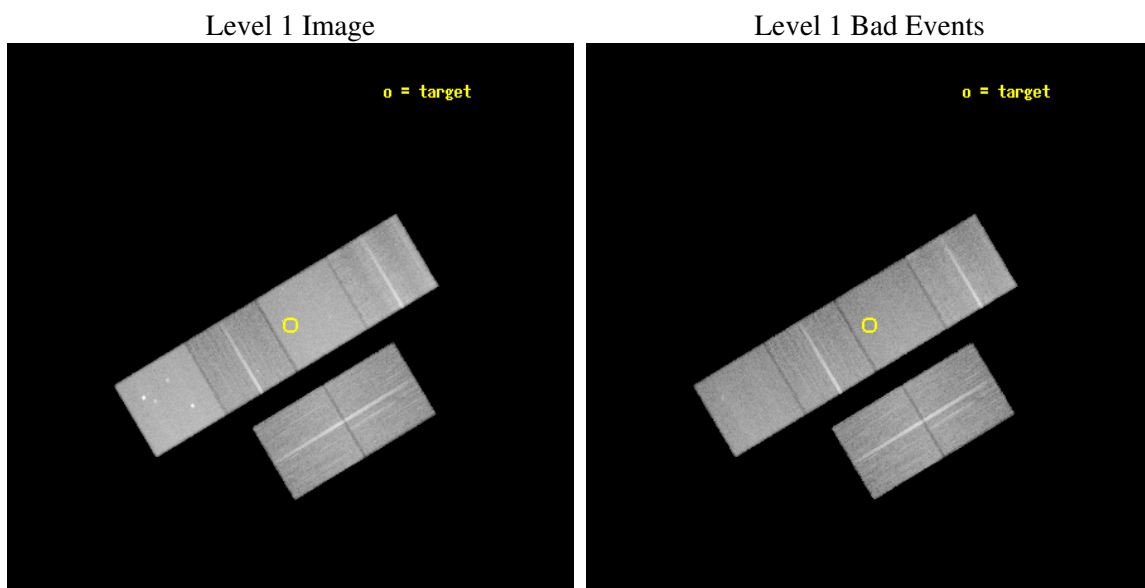
seq_num	701041
obs_id	5618
title	A Chandra Survey of the Most Distant Quasars: X-raying the First Massive Black Holes
observer	Prof. William Brandt
object	SDSS J1630+4012
dtcycle	0
cycle	P
ra_targ	247.64125
dec_targ	40.202667
ra_nom	247.64149339242
dec_nom	40.200603533658
roll_nom	329.01944648661
revision	2
ontime	27737.599896669
livetime	27386.3697052
ontime2	27737.599896669
ontime3	27737.599896669
ontime5	27737.599896669
ontime6	27737.599896669
ontime7	27737.599896669
ontime8	27737.599896669
l2events	348699



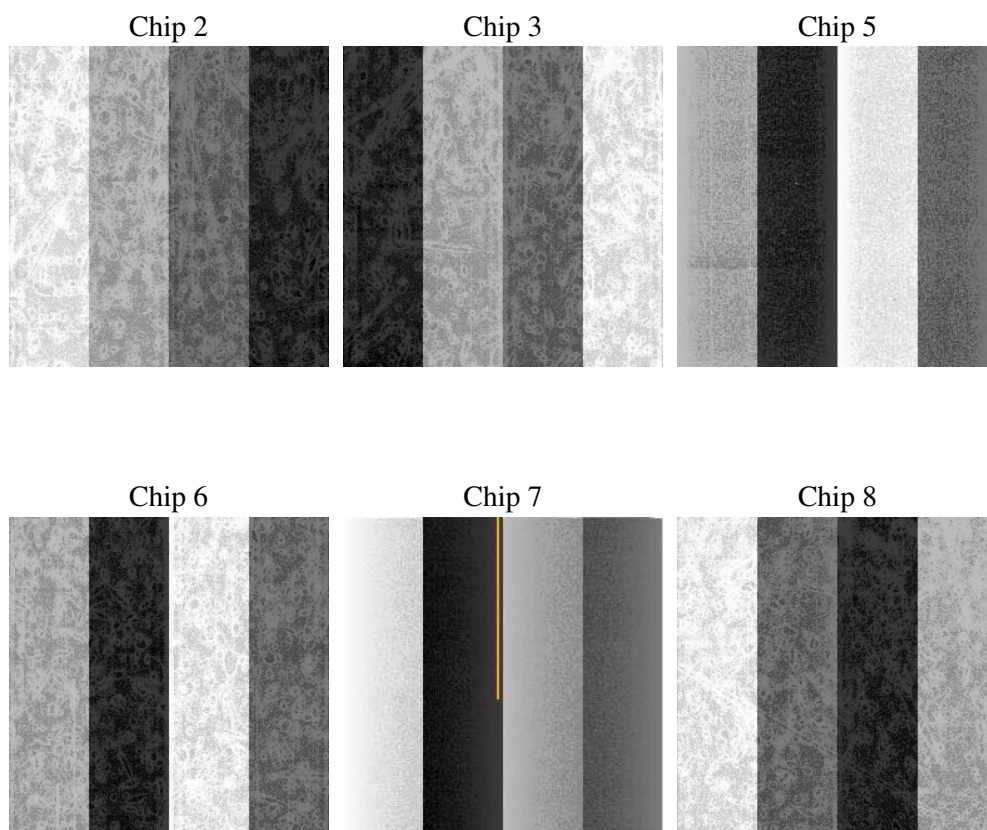
2 OBI

2.1 OBI

2.1.1 Images



2.1.2 Bias



2.1.3 Parameters

obi_num	0
ascdsver	7.6.7.1
caldsver	3.2.1
date	2006-04-04T15:57:08
revision	2

sched_exp_time	27600.000000
ontime	27872.621686041
ontime2	27872.621686041
ontime3	27872.621686041
ontime5	27872.621686041
ontime6	27872.621686041
ontime7	27872.621686041
ontime8	27872.621686041
l1events	1572201

2.1.4 Events

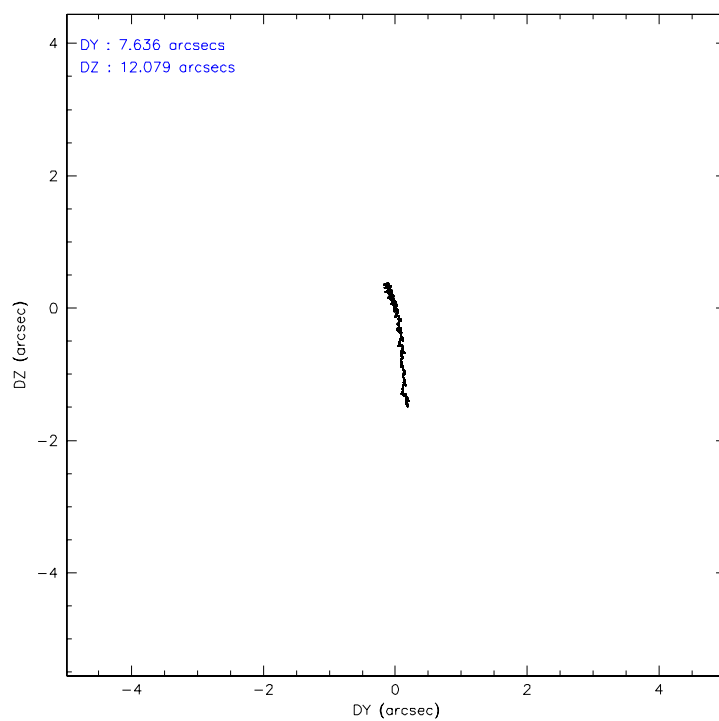
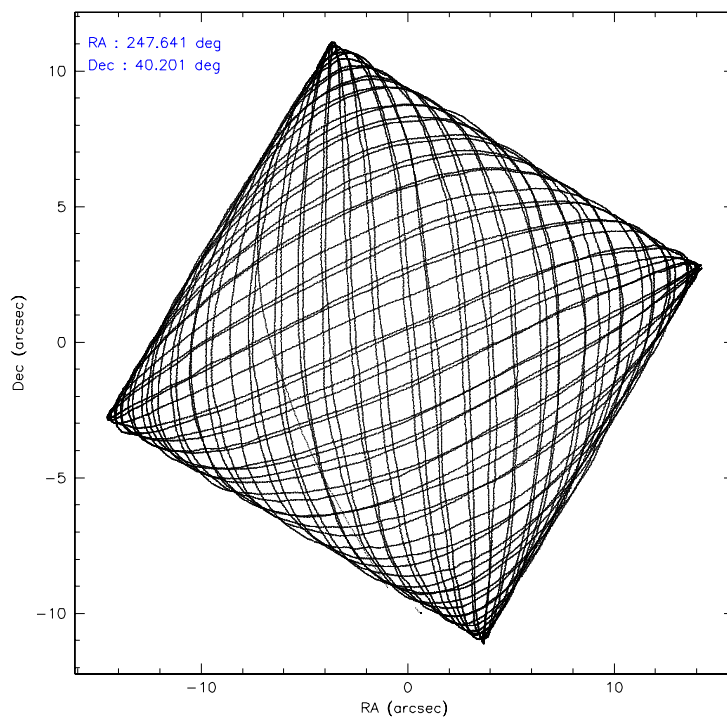
	ccd 2	ccd 3	ccd 5	ccd 6	ccd 7	ccd 8
level 1 events	225663	215080	332694	217969	300877	279918
rejected events	198970	189144	185348	190772	185379	217806
rejected %	88%	87%	55%	87%	61%	77%

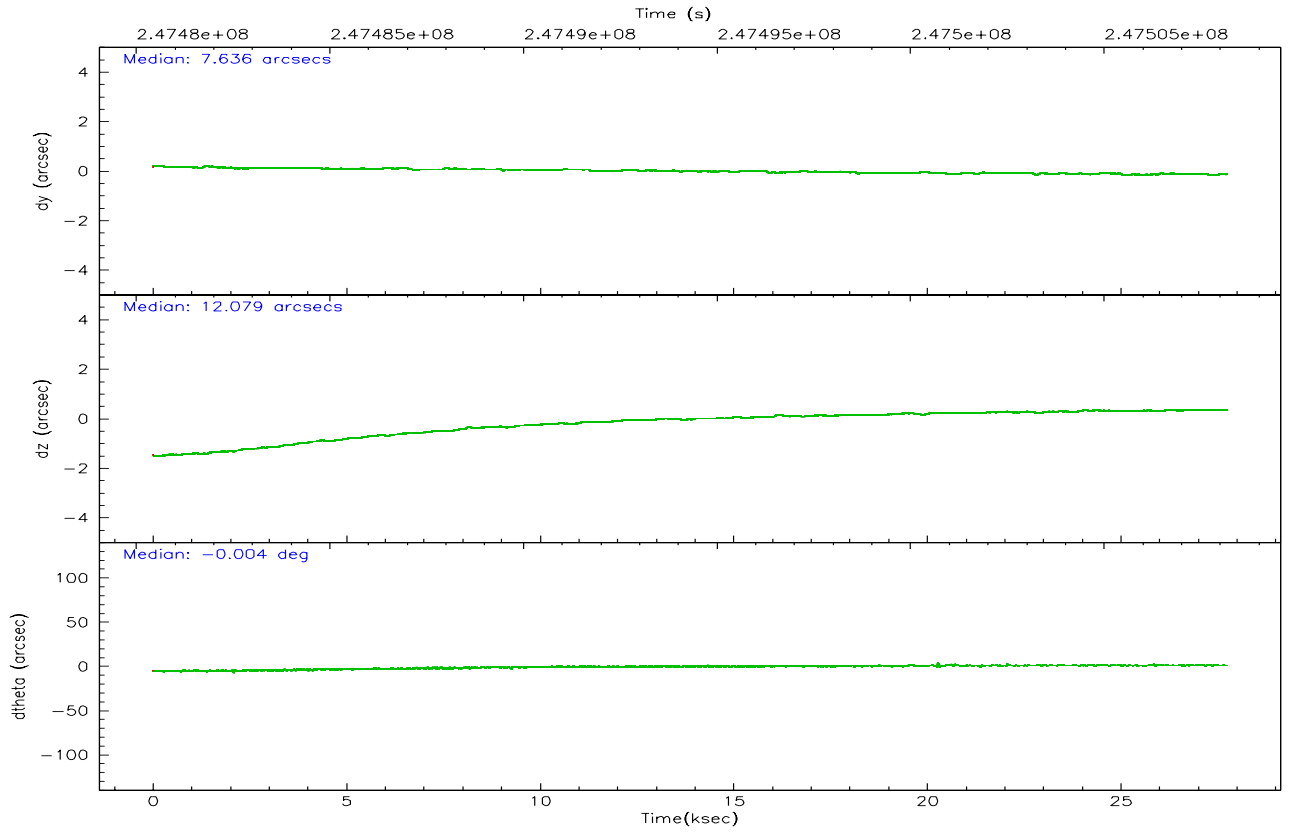
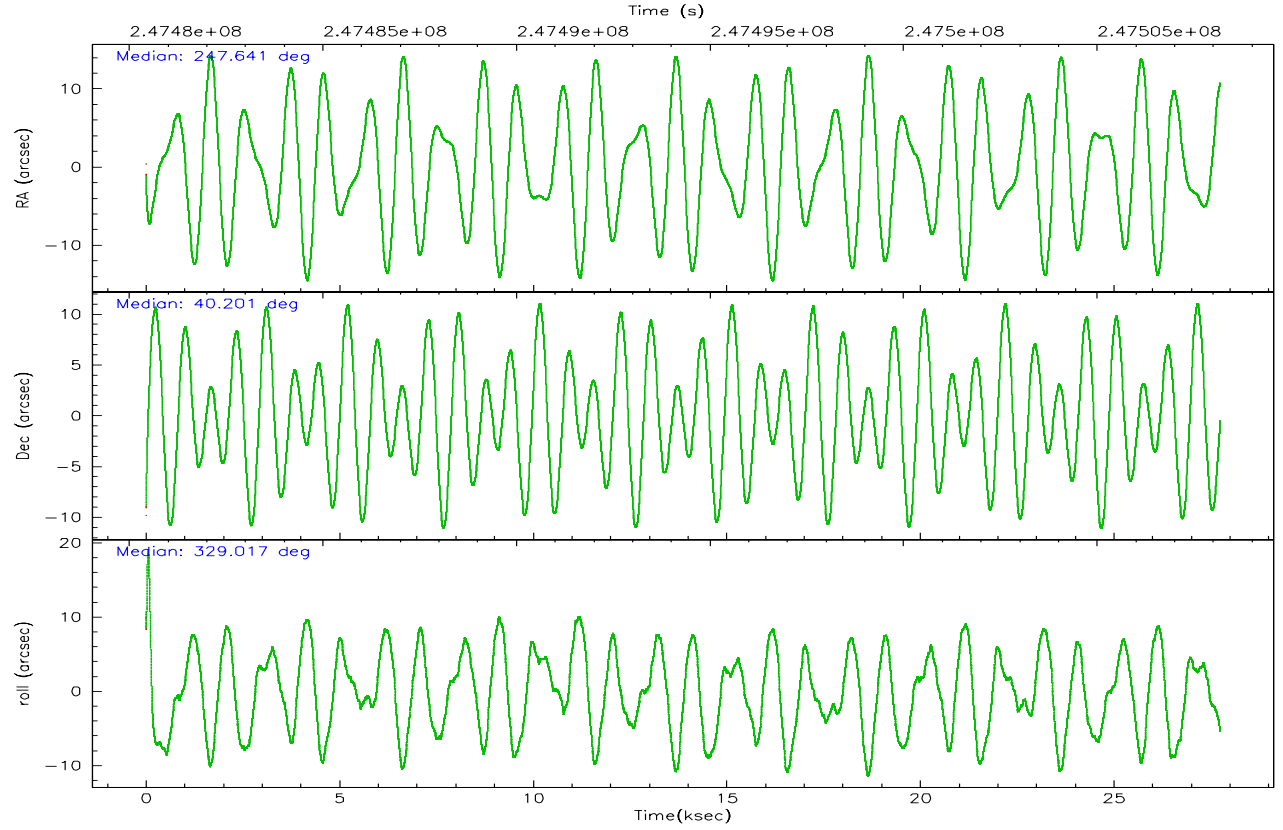
	ccd 2	ccd 3	ccd 5	ccd 6	ccd 7	ccd 8
grade 0 events	12126	11221	11944	11089	6791	19852
	5%	5%	3%	5%	2%	7%
grade 1 events	141	137	511	114	179	217
	0%	0%	0%	0%	0%	0%
grade 2 events	5618	5172	45460	5841	28855	13955
	2%	2%	13%	2%	9%	4%
grade 3 events	2443	2567	3098	2596	5641	6417
	1%	1%	0%	1%	1%	2%
grade 4 events	2359	2519	3053	2547	5611	5986
	1%	1%	0%	1%	1%	2%
grade 5 events	8631	9827	16297	10204	19907	13702
	3%	4%	4%	4%	6%	4%
grade 6 events	4280	4603	84527	5245	69201	16288
	1%	2%	25%	2%	22%	5%
grade 7 events	190065	179034	167804	180333	164692	203501
	84%	83%	50%	82%	54%	72%

2.2 Compared Parameters

Parameter	Planned	Actual	Parameter	Planned	Actual
Instrument	ACIS	ACIS	Obspar format version number	6	6
Detector	ACIS-235678	ACIS-235678	Obspar file type	PREDICTED	ACTUAL
Grating	NONE	NONE	Obspar update status	NONE	UPDATED
Data mode	FAINT	FAINT	On-chip summing requested	N	N
Observation mode	POINTING	POINTING	Subarray requested	NONE	NONE
Pointing RA	247.605871	247.641493392424	Alternating exposures requested	N	N
Pointing Dec	40.200684	40.20060353365798	Primary exposure time	0.000000	3.2
Pointing Roll	328.885821	329.019446486607			
SIM focus pos (mm)	-0.684267	-0.6828225247311905			
SIM defocus (mm)	0	0.001444936568705701			
SIM translation stage pos (mm)	-190.132523	-190.1400660498719			
SIM translation stage offset (mm)	0	0.00754346686406393			
Observation start time	247480574.184000	247479401.99818			
Observation start date	2005-11-04T08:35:10	2005-11-04T08:16:41			
Observation end time	247508174.184000	247508693.93703			
Observation end date	2005-11-04T16:15:10	2005-11-04T16:24:53			
Read mode	TIMED	TIMED			

2.3 Aspect



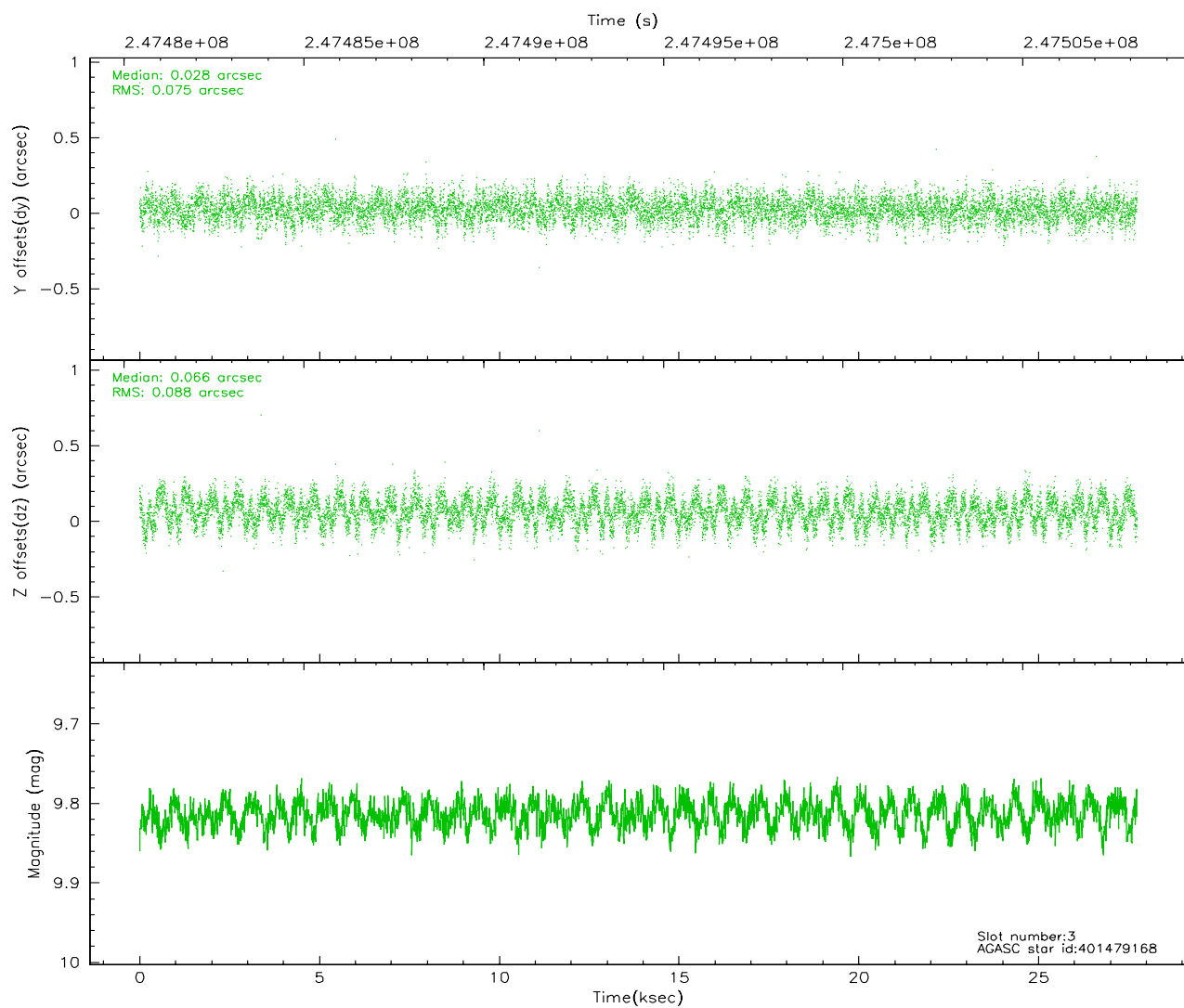
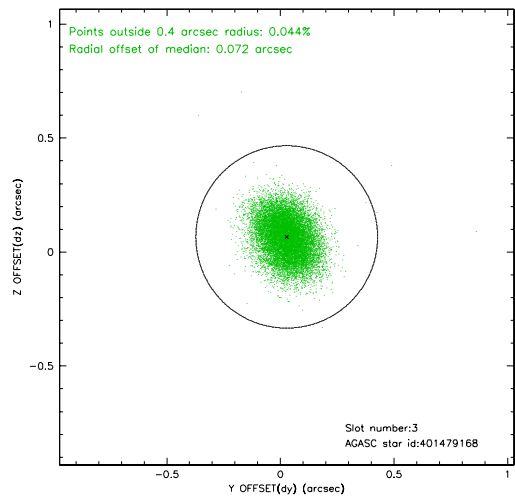
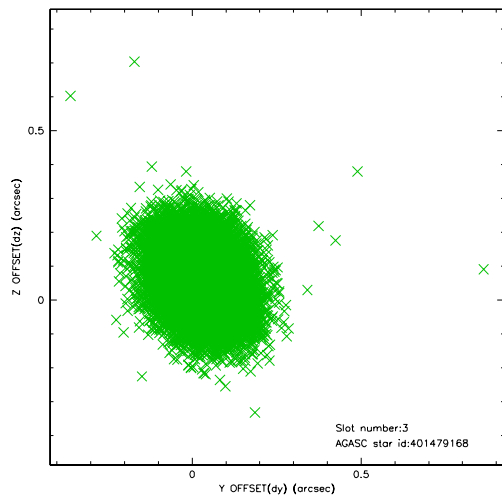


Slot Statistics

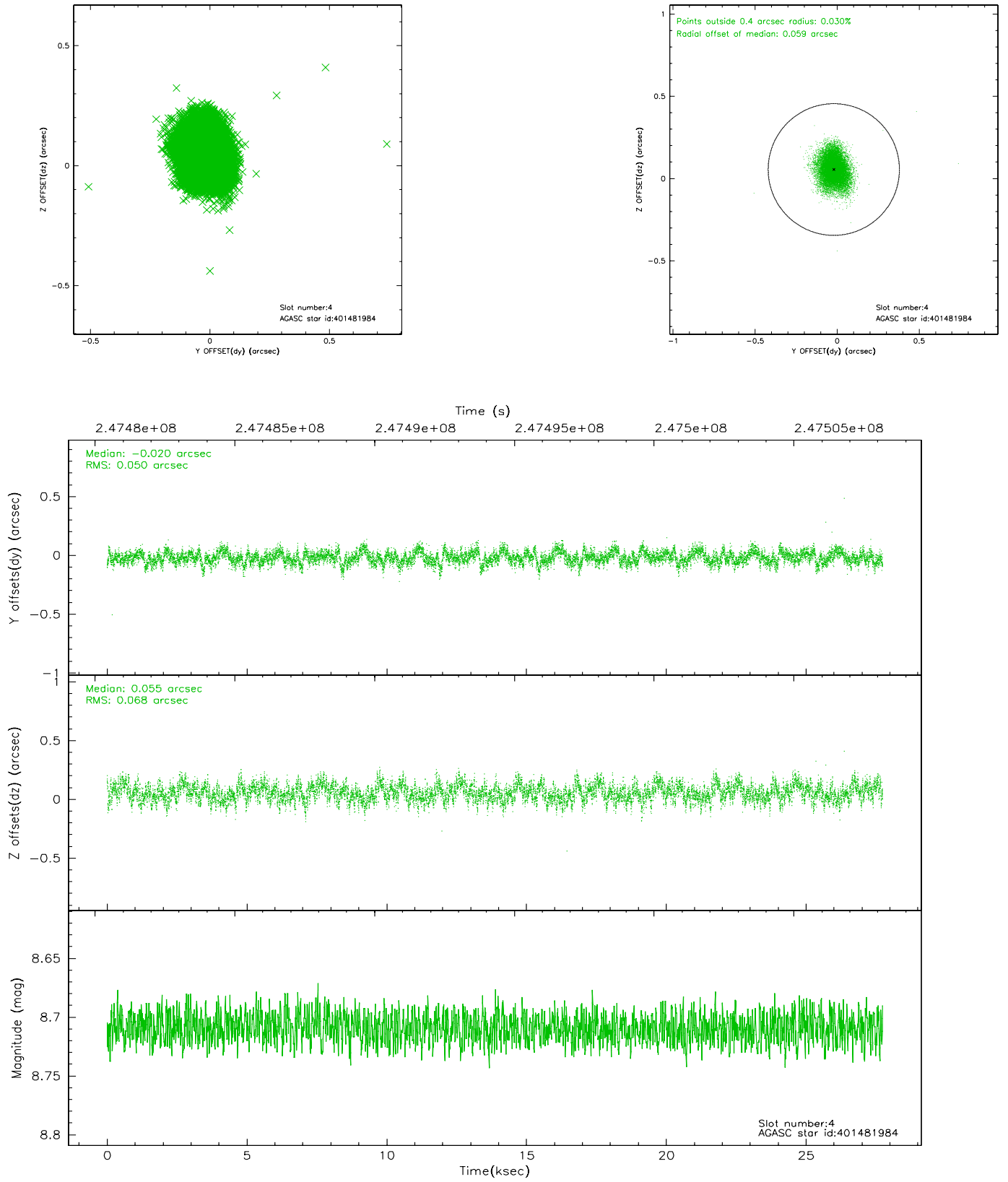
slot	status	id	mag	n_pts	med_dy	med_dz	dr1	dr2	ra	dec	mean_y	mean_z
0	FID	ACIS-S-2	7.10	6767	-0.000	0.002	0.014	0.035	0.000000	0.000000	-760.41	-1733.17
1	FID	ACIS-S-4	7.20	6767	0.035	0.000	0.019	0.042	0.000000	0.000000	2152.86	175.24
2	FID	ACIS-S-5	7.23	6766	-0.066	0.007	0.012	0.022	0.000000	0.000000	-1813.20	168.99
3	GUIDE	401479168	9.81	13509	0.028	0.066	0.123	0.197	248.051525	39.792234	1813.95	-618.41
4	GUIDE	401481984	8.71	13529	-0.020	0.055	0.089	0.146	247.136950	39.776672	-323.13	-1974.04
5	GUIDE	401882056	9.14	13528	-0.054	-0.092	0.081	0.134	248.472543	40.010094	2394.77	657.72
6	GUIDE	401480560	9.77	13522	-0.068	0.194	0.167	0.282	246.896626	39.730877	-810.48	-2455.50
7	GUIDE	401881872	10.04	13510	0.118	-0.210	0.123	0.199	246.976416	40.551930	-2130.10	197.92

2.4 Star Slots

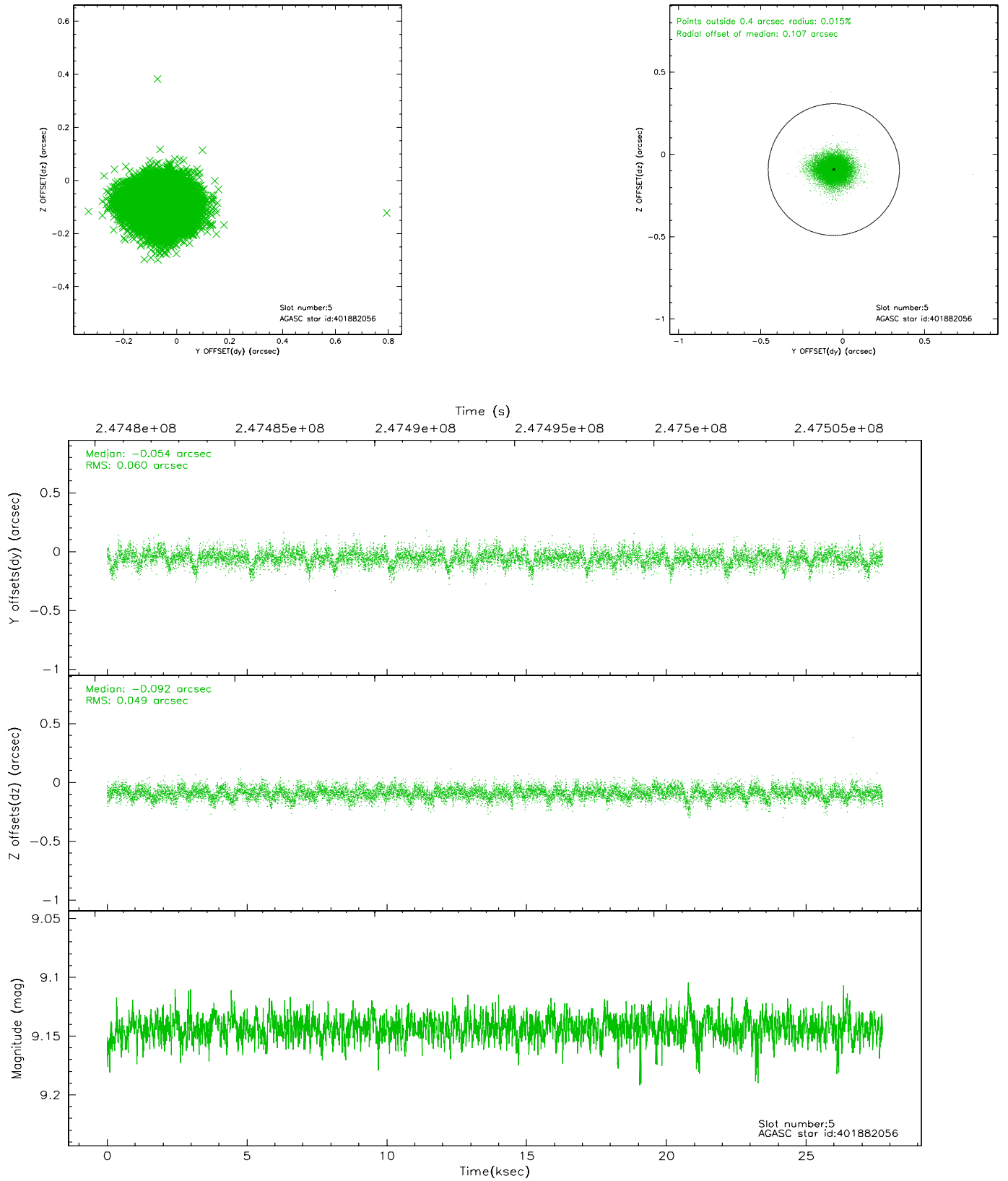
2.4.1 Slot 3



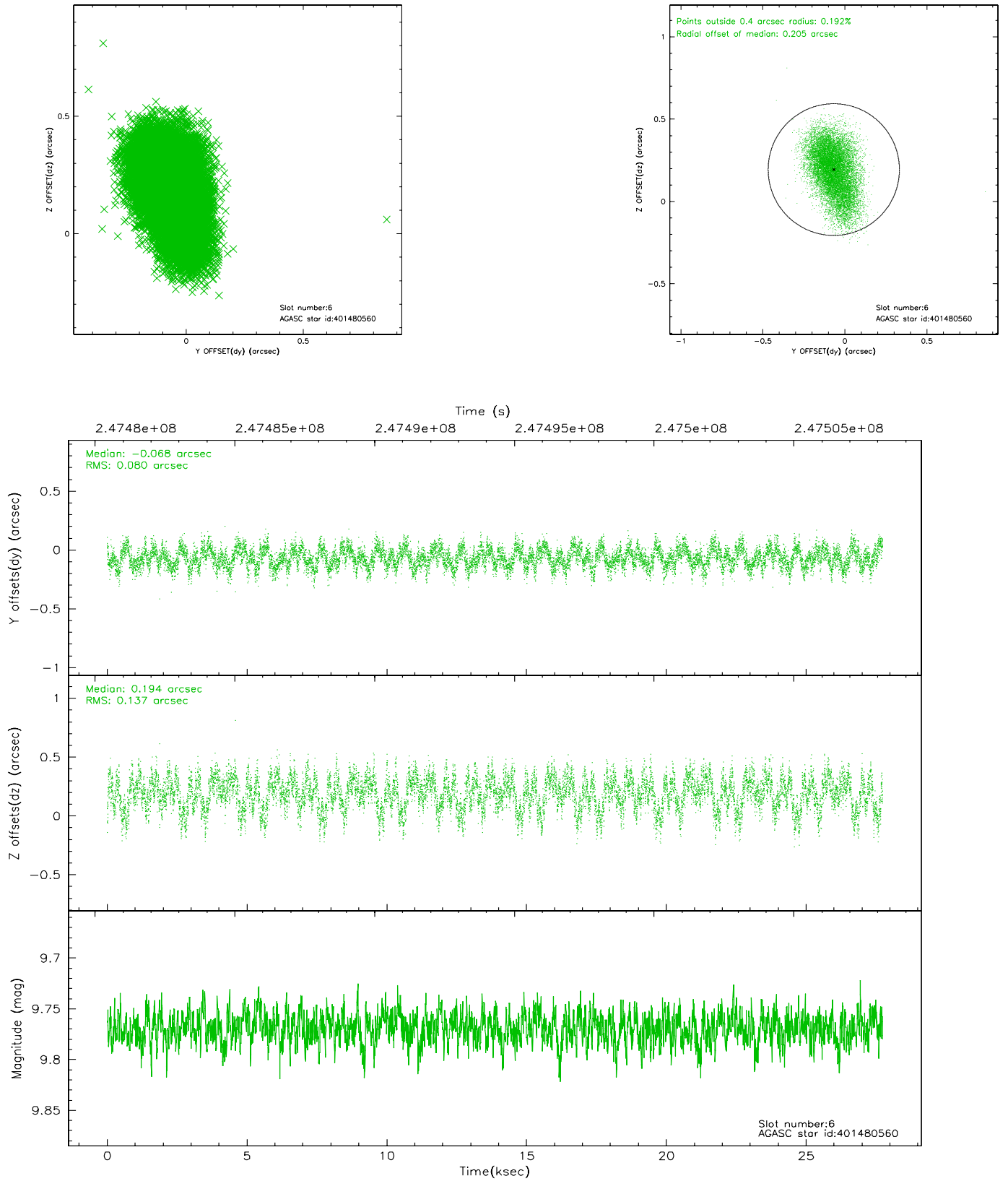
2.4.2 Slot 4



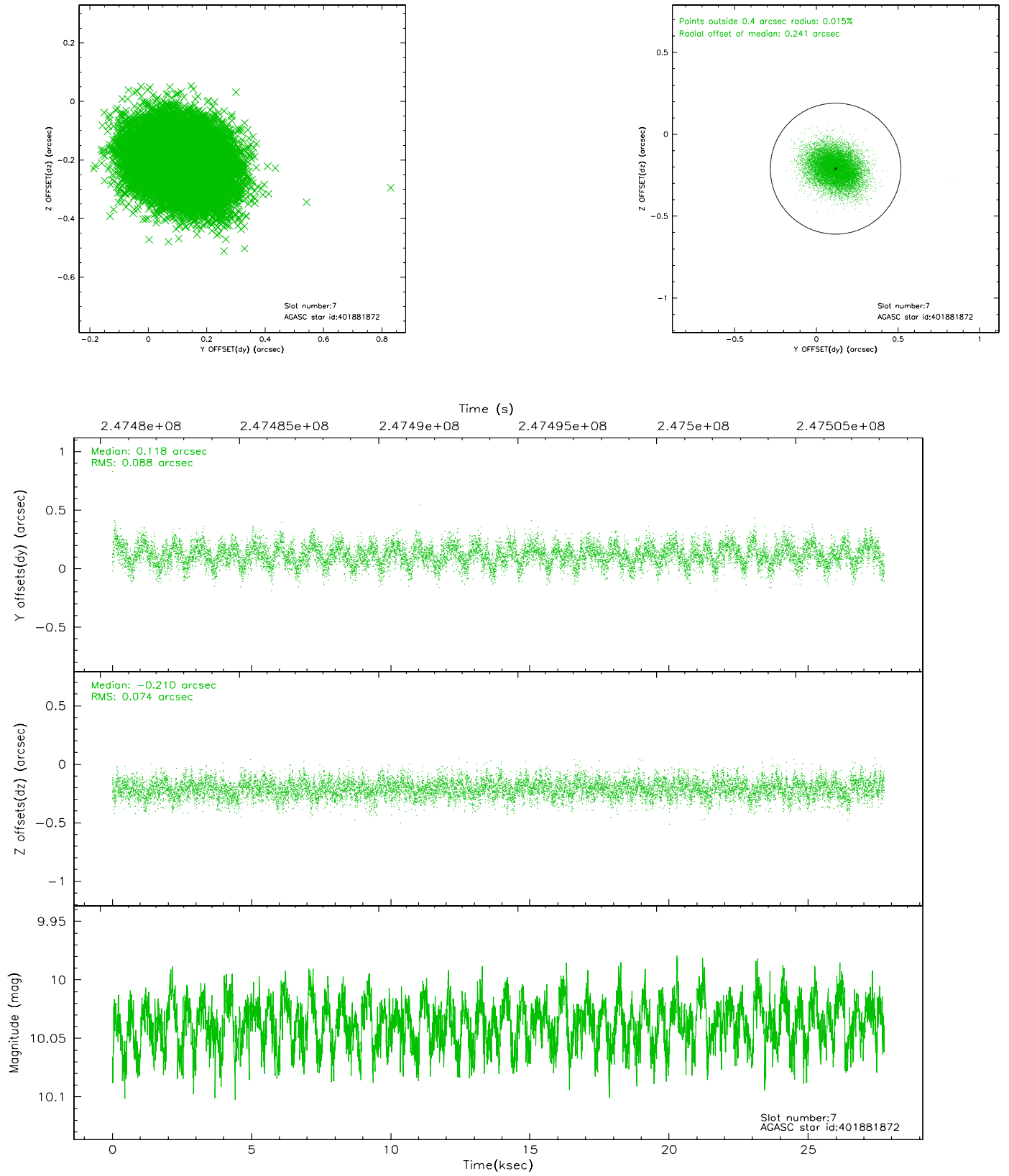
2.4.3 Slot 5



2.4.4 Slot 6

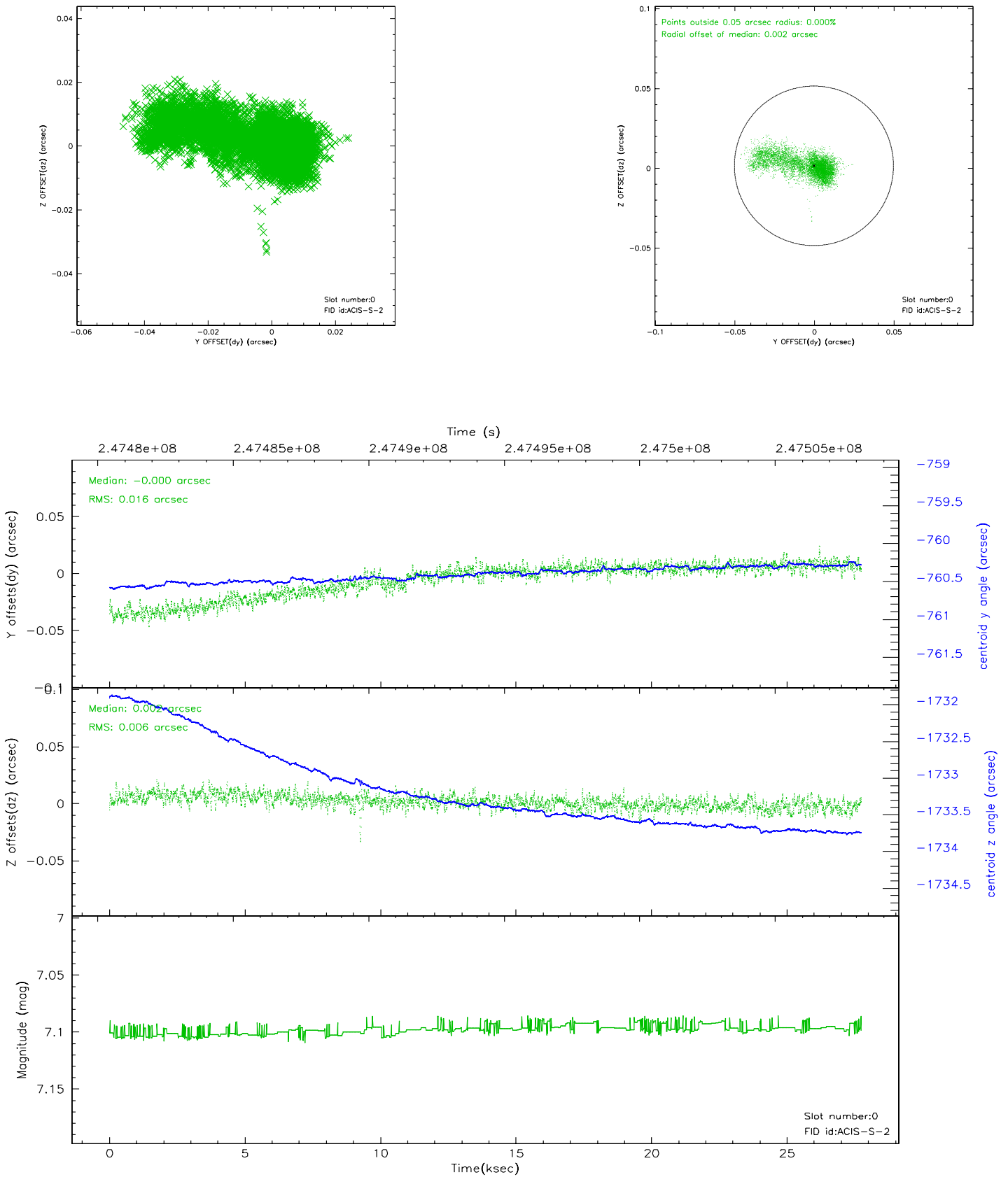


2.4.5 Slot 7

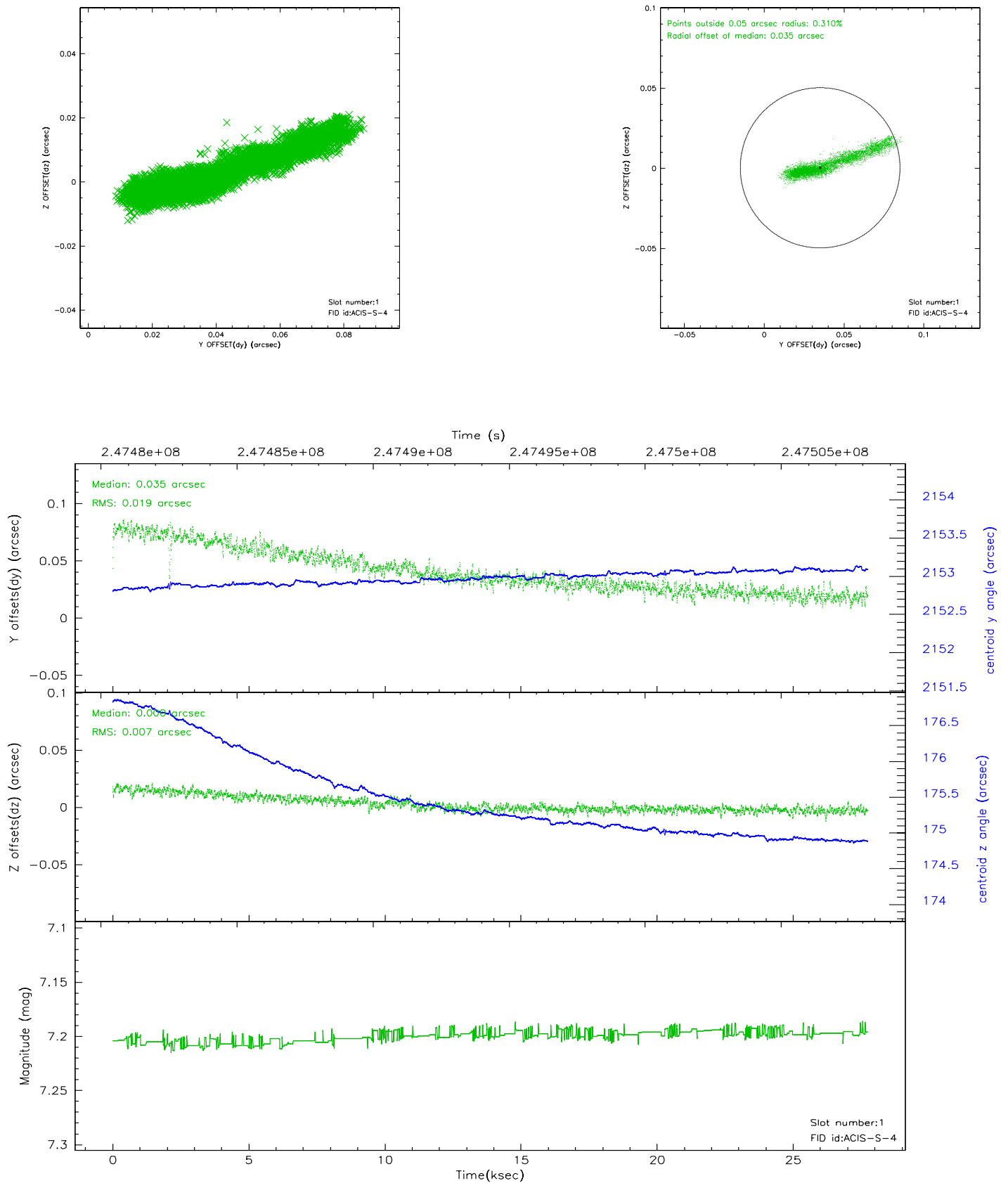


2.5 FID Slots

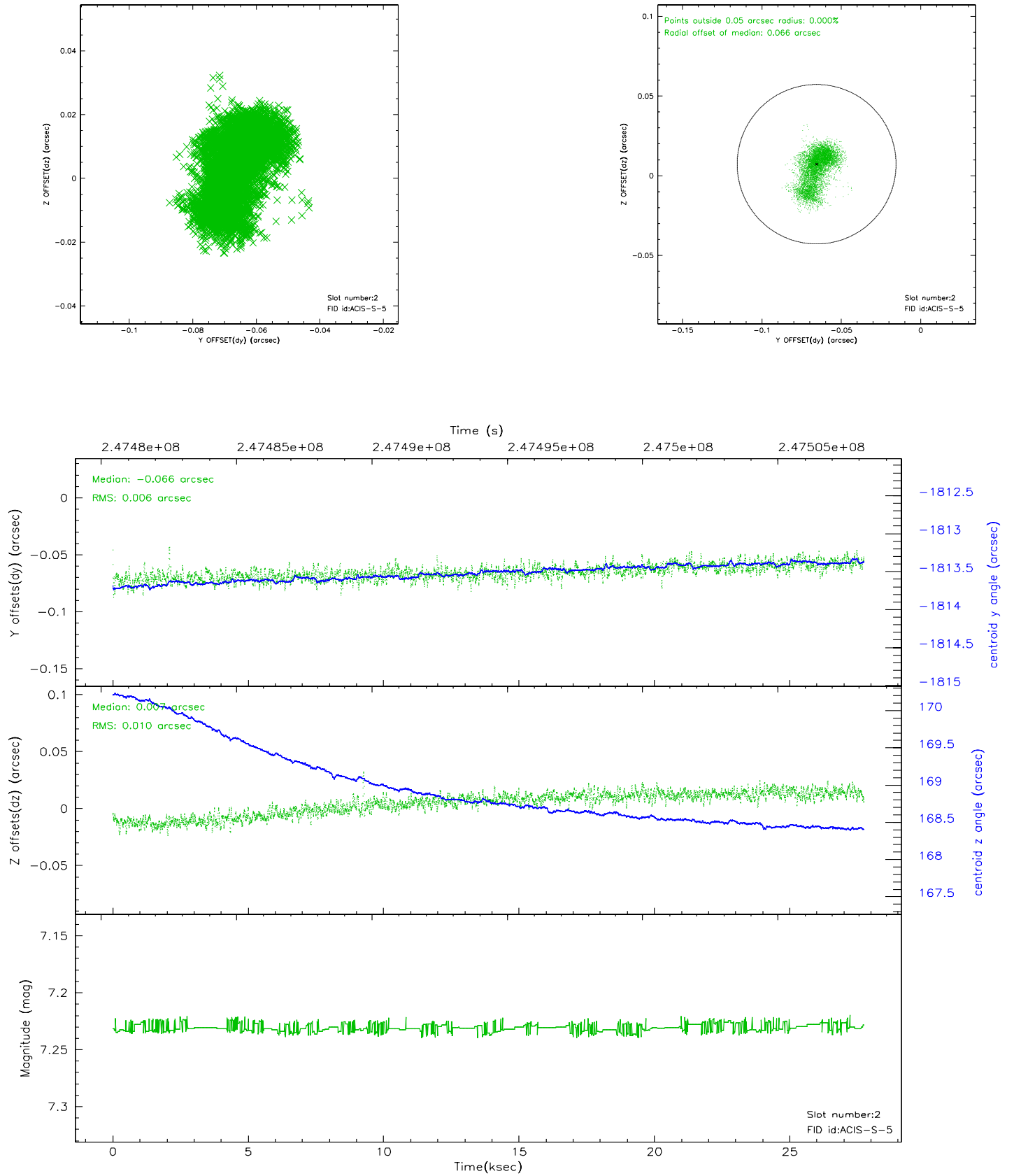
2.5.1 Slot 0



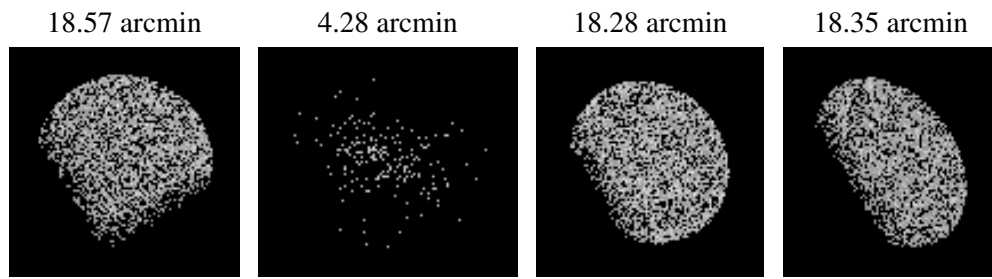
2.5.2 Slot 1



2.5.3 Slot 2



3 Point Sources



A Summary

A.1 Status

V&V Scientist	Jen Lauer
V&V Date (YYYY-MM-DD)	2006.04.04
V&V Edition	1
V&V Disposition and Status	OK
V&V Charge Time	27.73759

A.2 Comments