

V&V Reference Report

L2 ASCDS Version : 7.6.7

Observation 5613 - L2 Version 002
Chandra X-Ray Center

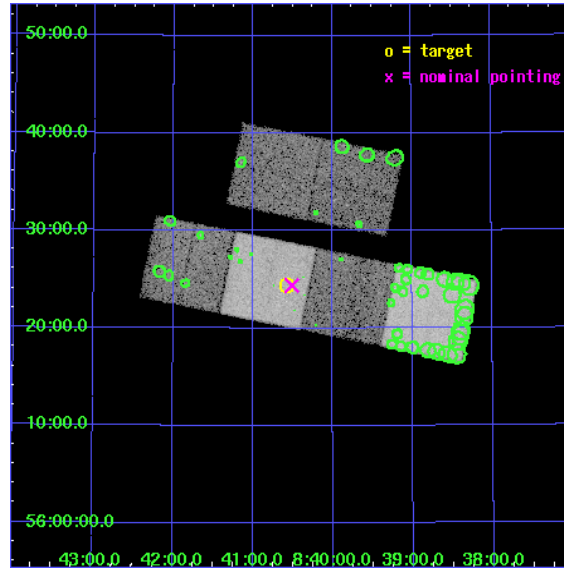
L2 Processing Date: Feb 21 2006

Contents

1	Front	2
2	OBI	3
2.1	OBI	3
2.1.1	Images	3
2.1.2	Bias	3
2.1.3	Parameters	4
2.1.4	Events	4
2.2	Compared Parameters	5
2.3	Aspect	6
2.4	Star Slots	9
2.4.1	Slot 3	9
2.4.2	Slot 4	10
2.4.3	Slot 5	11
2.4.4	Slot 6	12
2.4.5	Slot 7	13
2.5	FID Slots	14
2.5.1	Slot 0	14
2.5.2	Slot 1	15
2.5.3	Slot 2	16
3	Point Sources	17
A	Summary	18
A.1	Status	18
A.2	Comments	18

1 Front

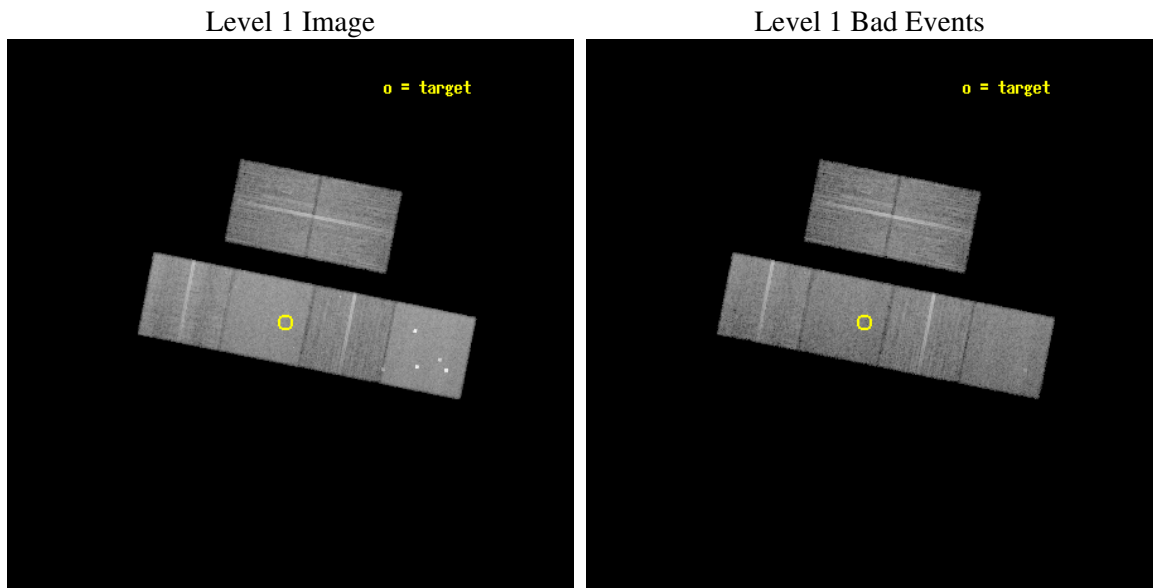
seq_num	701036
obs_id	5613
title	A Chandra Survey of the Most Distant Quasars: X-raying the First Massive Black Holes
observer	Prof. William Brandt
object	SDSS J0840+5624
dtcycle	0
cycle	P
ra_targ	130.145
dec_targ	56.407
ra_nom	130.12753667654
dec_nom	56.406790396471
roll_nom	191.28275771486
revision	2
ontime	16047.999940217
livetime	15844.790502028
ontime2	16047.999940217
ontime3	16044.758949935
ontime5	16047.999940217
ontime6	16047.999940217
ontime7	16047.999940217
ontime8	16047.999940217
l2events	179542



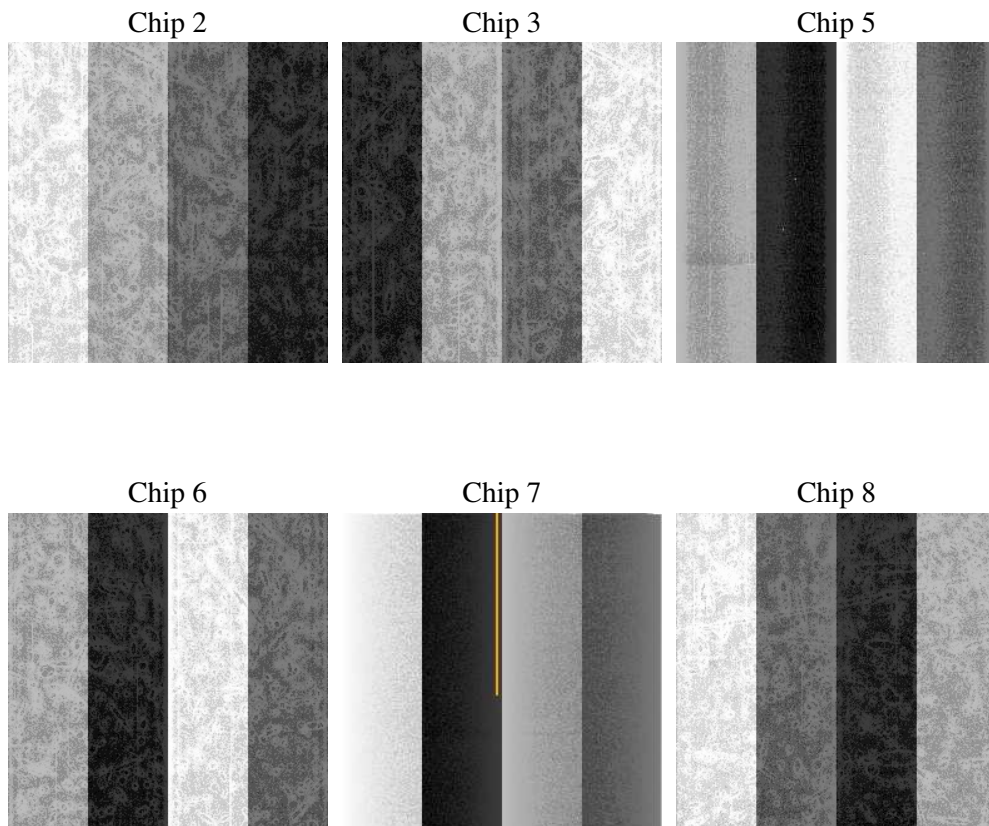
2 OBI

2.1 OBI

2.1.1 Images



2.1.2 Bias



2.1.3 Parameters

obi_num	0
ascdsver	7.6.7
caldsver	3.2.1
date	2006-02-21T22:55:13
revision	2

sched_exp_time	15900.000000
ontime	16052.742216021
ontime2	16052.742196113
ontime3	16049.50122574
ontime5	16052.742216021
ontime6	16052.742216021
ontime7	16052.742216021
ontime8	16052.742216021
l1events	847437

2.1.4 Events

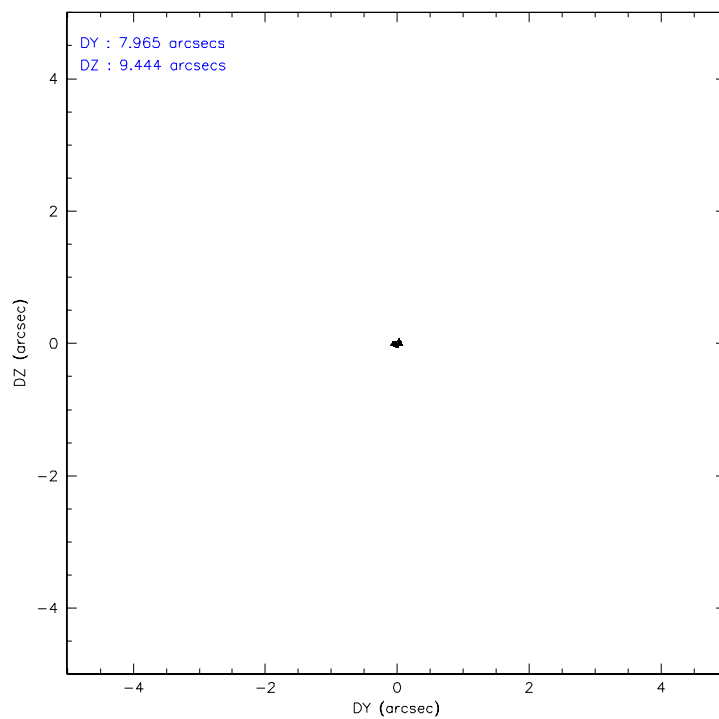
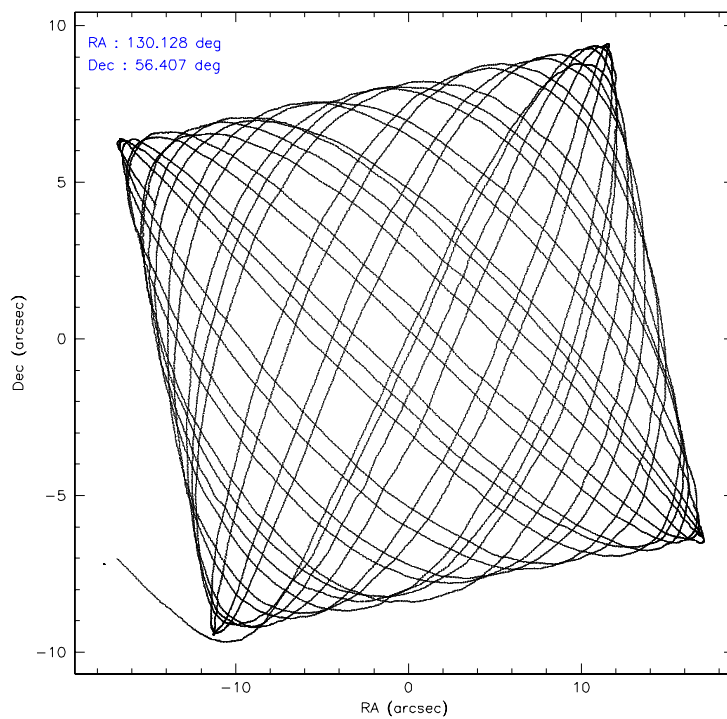
	ccd 2	ccd 3	ccd 5	ccd 6	ccd 7	ccd 8
level 1 events	124579	112992	182883	122430	158574	145979
rejected events	110888	99378	97815	108475	99092	114028
rejected %	89%	87%	53%	88%	62%	78%

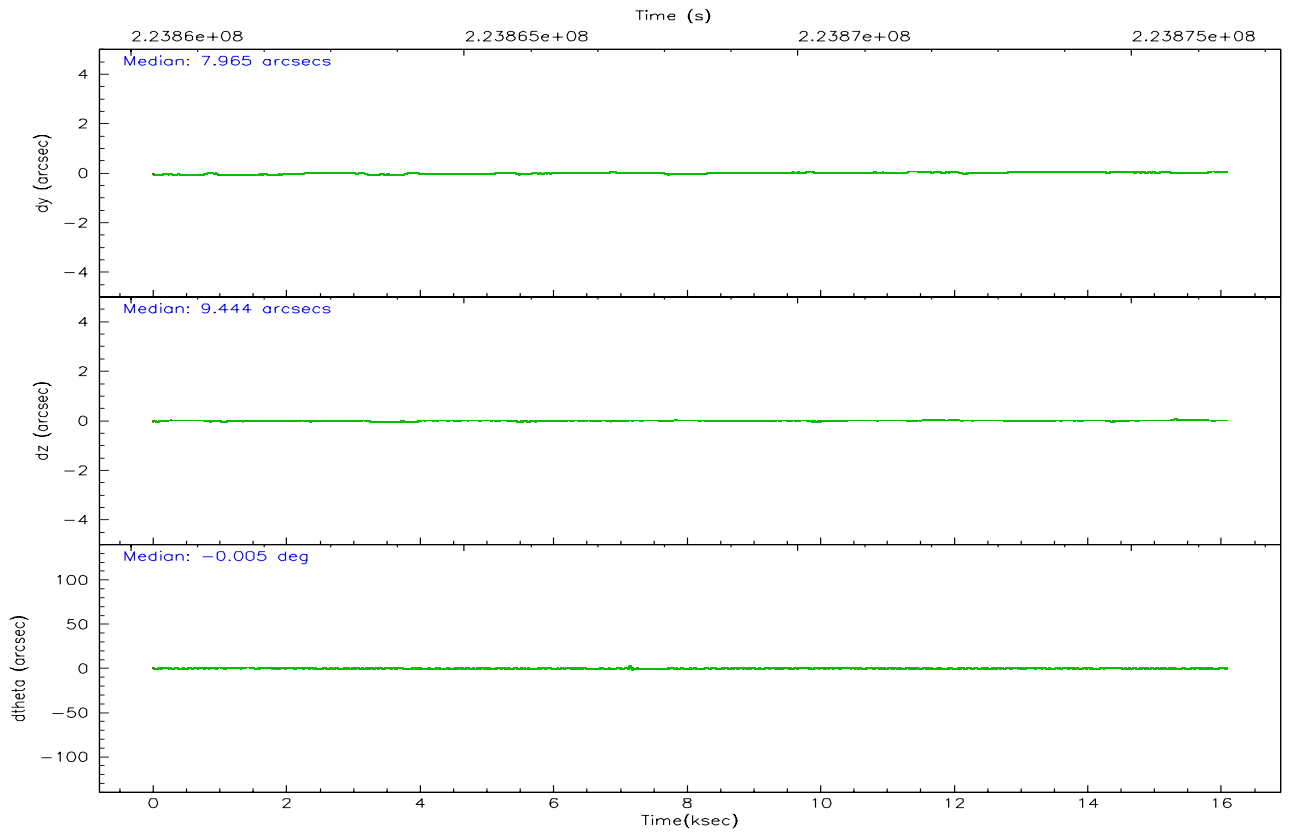
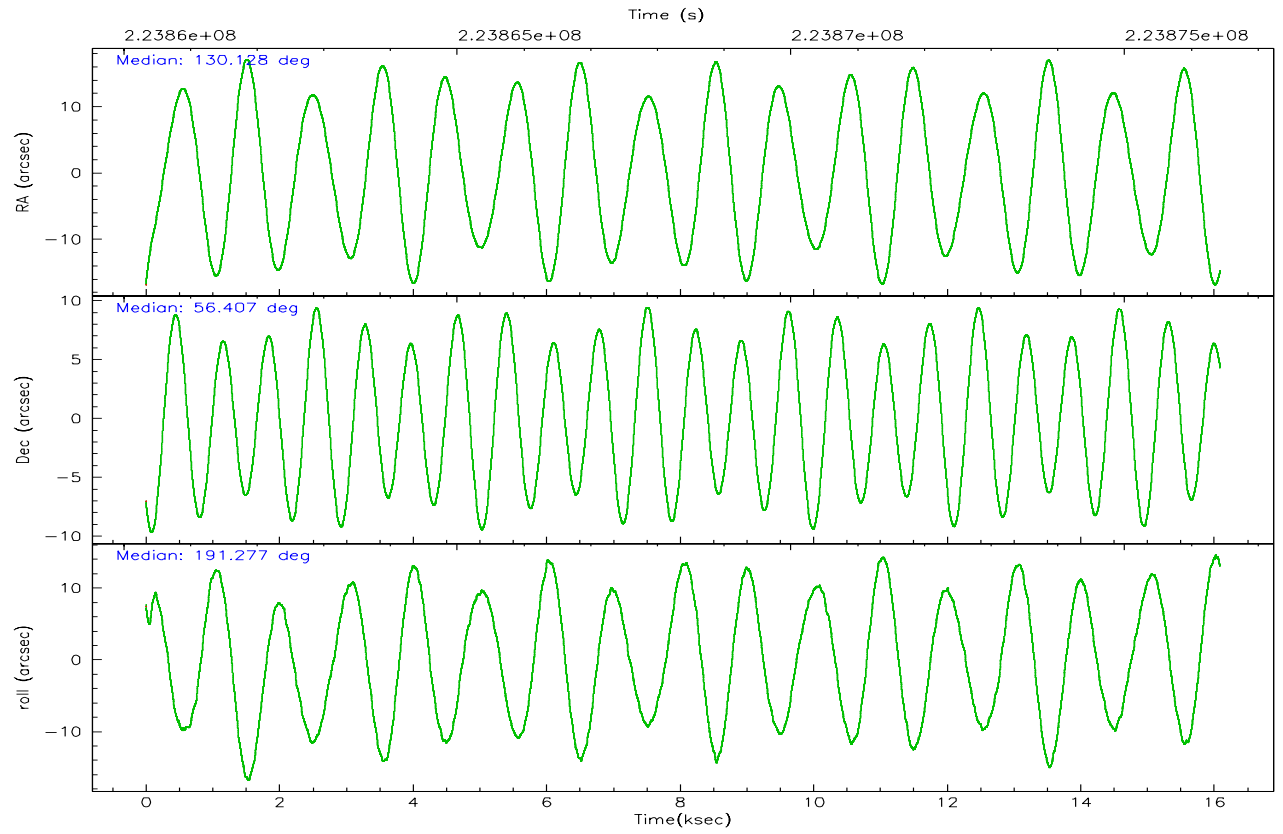
	ccd 2	ccd 3	ccd 5	ccd 6	ccd 7	ccd 8
grade 0 events	5887	5891	13612	5446	3226	10391
	4%	5%	7%	4%	2%	7%
grade 1 events	72	65	377	60	83	94
	0%	0%	0%	0%	0%	0%
grade 2 events	2942	2655	24115	3038	14742	7070
	2%	2%	13%	2%	9%	4%
grade 3 events	1213	1288	1633	1279	2798	3416
	0%	1%	0%	1%	1%	2%
grade 4 events	1286	1309	1500	1285	2729	3149
	1%	1%	0%	1%	1%	2%
grade 5 events	4616	5219	8160	5368	9824	7154
	3%	4%	4%	4%	6%	4%
grade 6 events	2366	2473	44225	2909	35995	7931
	1%	2%	24%	2%	22%	5%
grade 7 events	106197	94092	89261	103045	89177	106774
	85%	83%	48%	84%	56%	73%

2.2 Compared Parameters

Parameter	Planned	Actual	Parameter	Planned	Actual
Instrument	ACIS	ACIS	Obspar format version number	6	6
Detector	ACIS-235678	ACIS-235678	Obspar file type	PREDICTED	ACTUAL
Grating	NONE	NONE	Obspar update status	NONE	UPDATED
Data mode	FAINT	FAINT	On-chip summing requested	N	N
Observation mode	POINTING	POINTING	Subarray requested	NONE	NONE
Pointing RA	130.164087	130.1275366765444	Alternating exposures requested	N	N
Pointing Dec	56.425040	56.40679039647132	Primary exposure time	0.000000	3.2
Pointing Roll	191.095686	191.2827577148618			
SIM focus pos (mm)	-0.684267	-0.6828225247311905			
SIM defocus (mm)	0	0.001444936568705701			
SIM translation stage pos (mm)	-190.132523	-190.1425803651734			
SIM translation stage offset (mm)	0	0.01005778216563158			
Observation start time	223860524.184000	223859461.33194			
Observation start date	2005-02-03T23:27:40	2005-02-03T23:11:01			
Observation end time	223876424.184000	223876894.02023			
Observation end date	2005-02-04T03:52:40	2005-02-04T04:01:34			
Read mode	TIMED	TIMED			

2.3 Aspect



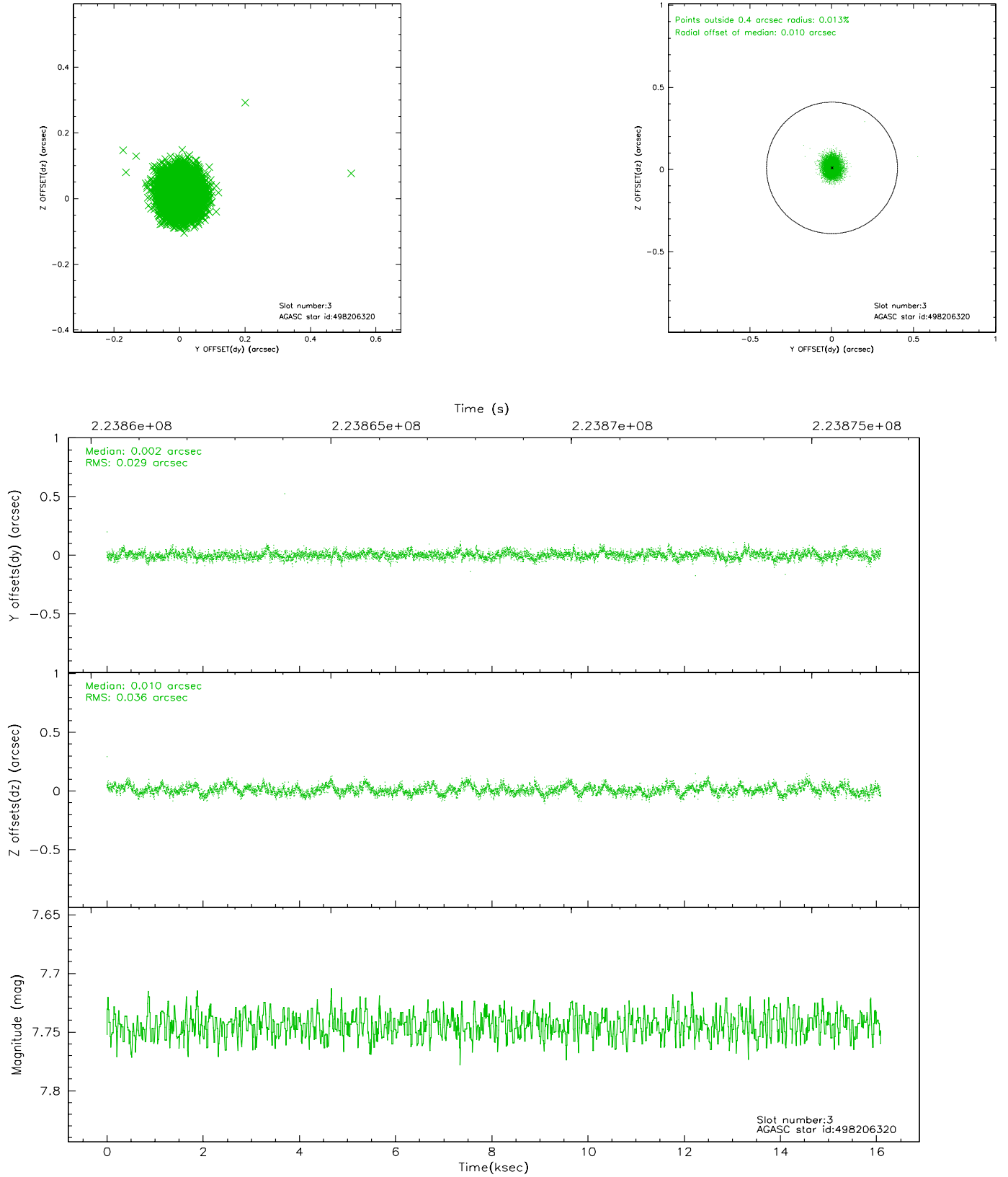


Slot Statistics

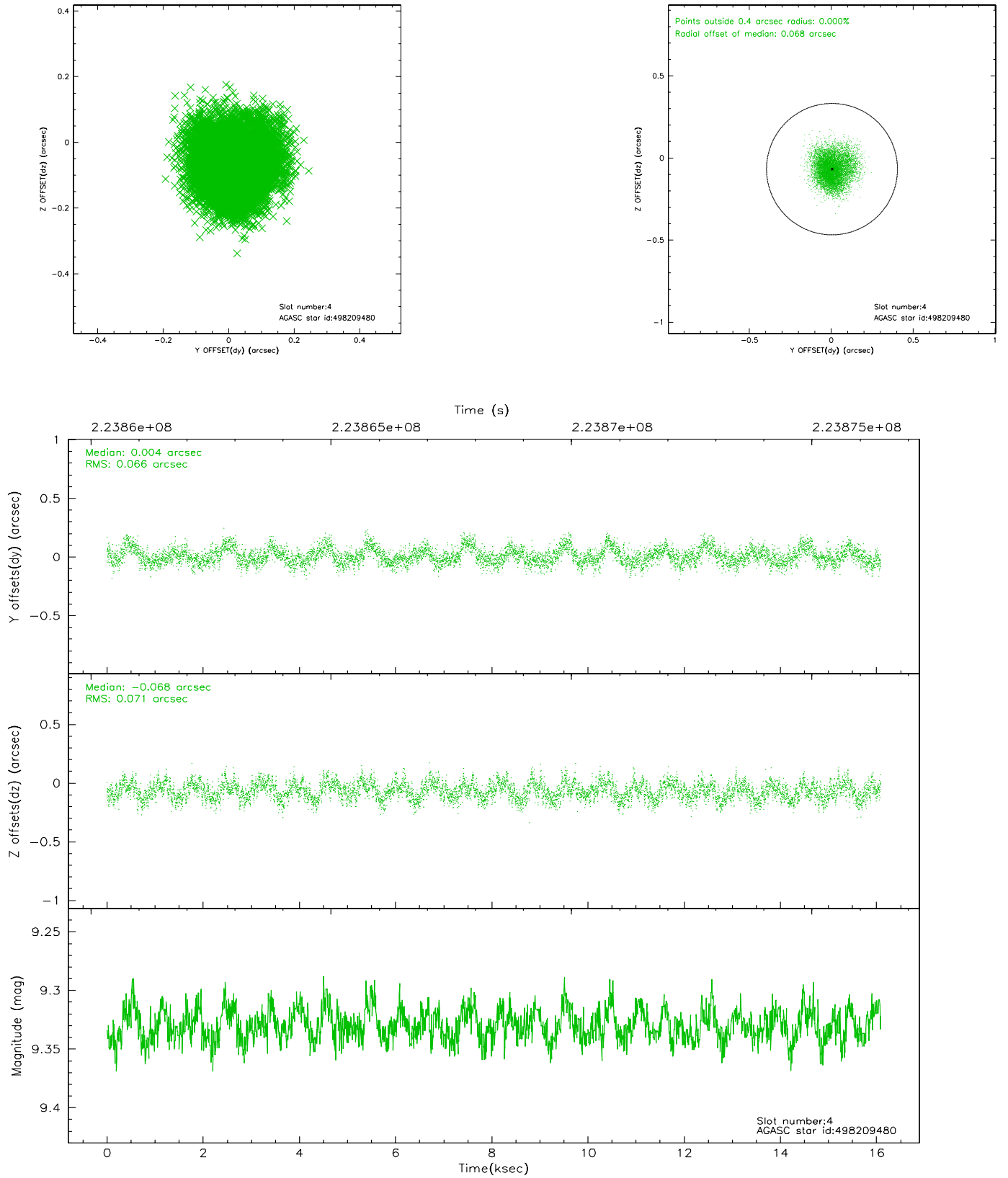
slot	status	id	mag	n_pts	med_dy	med_dz	dr1	dr2	ra	dec	mean_y	mean_z
0	FID	ACIS-S-2	7.11	3924	-0.019	-0.013	0.007	0.011	0.000000	0.000000	-760.73	-1730.65
1	FID	ACIS-S-4	7.21	3925	0.061	0.013	0.006	0.010	0.000000	0.000000	2152.47	177.63
2	FID	ACIS-S-5	7.24	3925	-0.074	0.009	0.006	0.011	0.000000	0.000000	-1813.31	171.54
3	GUIDE	498206320	7.74	7849	0.002	0.010	0.048	0.080	129.264284	55.839214	2188.49	1708.29
4	GUIDE	498209480	9.33	7844	0.004	-0.068	0.106	0.165	130.677043	56.388292	-978.00	322.99
5	GUIDE	498209904	9.40	7847	0.007	-0.015	0.087	0.141	130.595865	56.107689	-631.19	1285.24
6	GUIDE	498210008	9.59	7848	0.022	0.126	0.177	0.262	130.031703	56.476753	222.46	-233.07
7	GUIDE	498211200	9.09	7844	-0.044	-0.042	0.085	0.141	129.416191	56.796643	1188.22	-1604.16

2.4 Star Slots

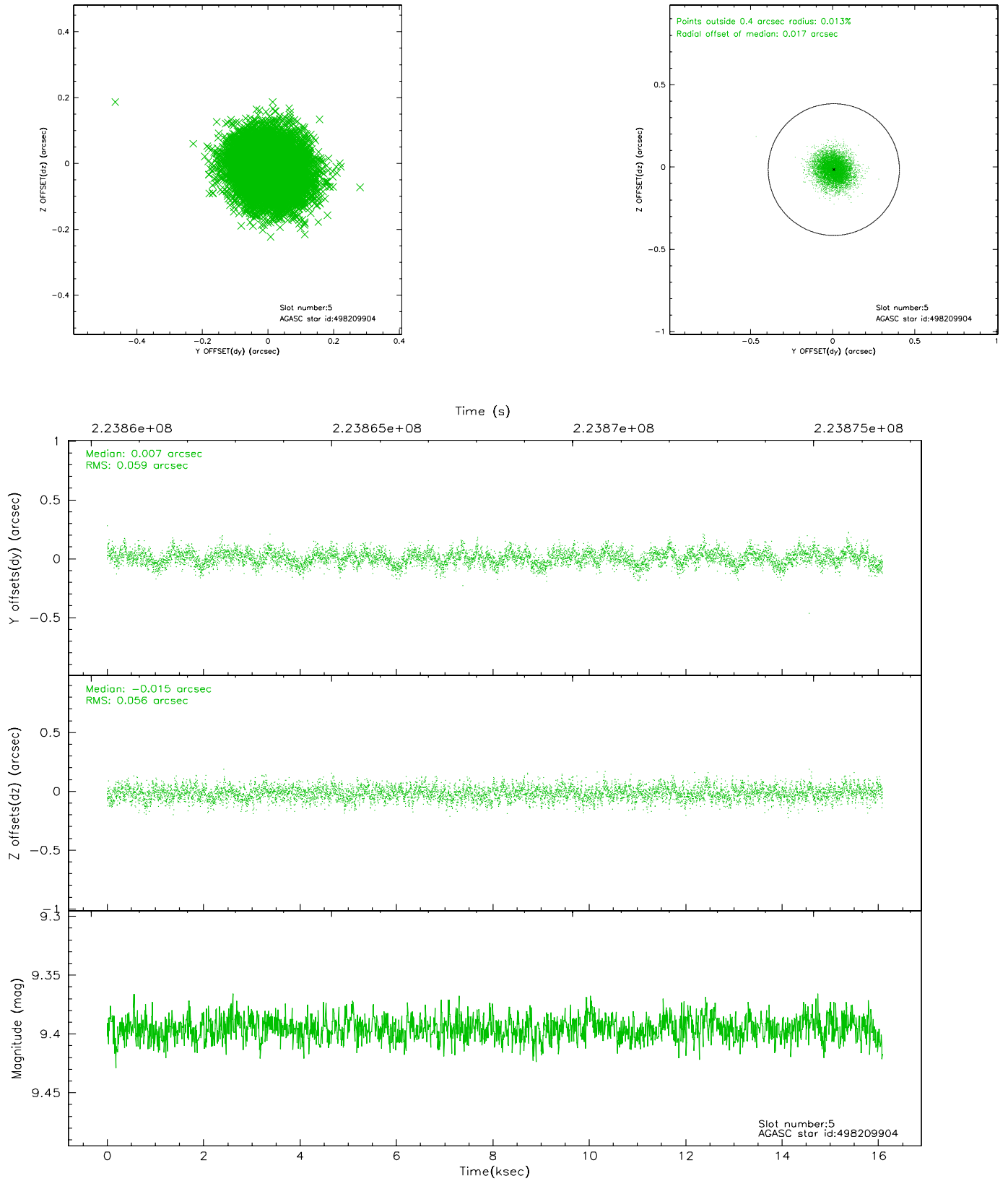
2.4.1 Slot 3



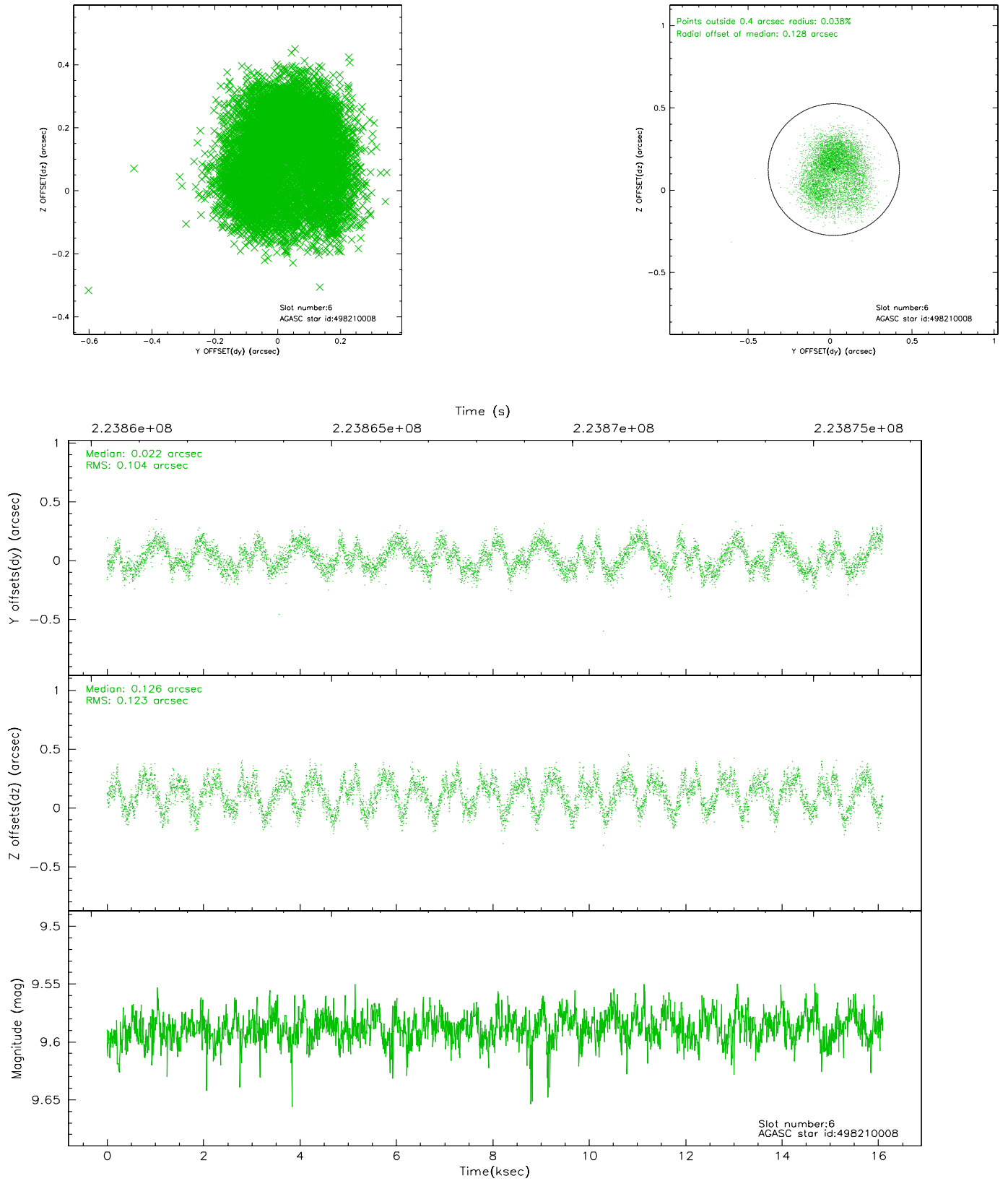
2.4.2 Slot 4



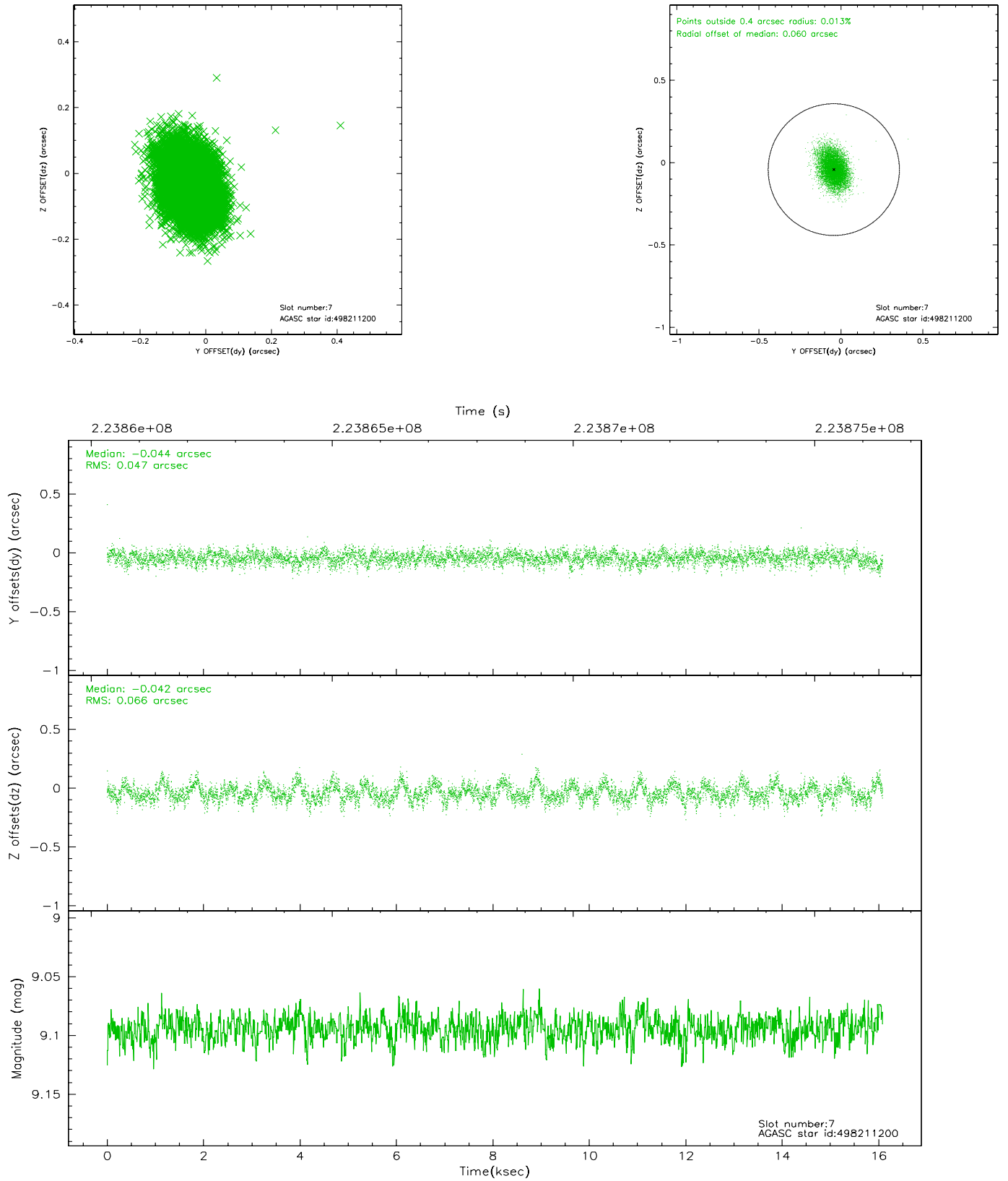
2.4.3 Slot 5



2.4.4 Slot 6

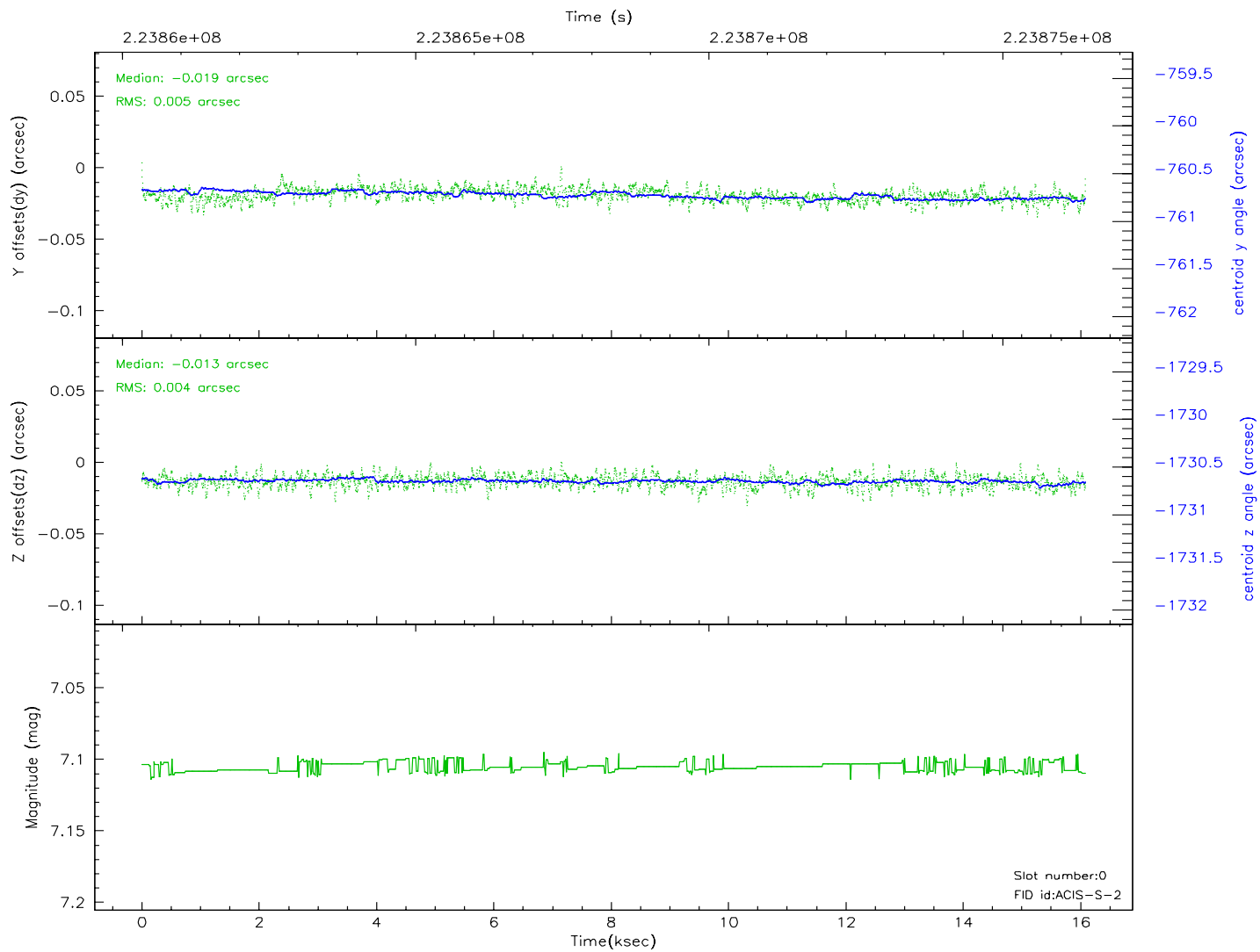
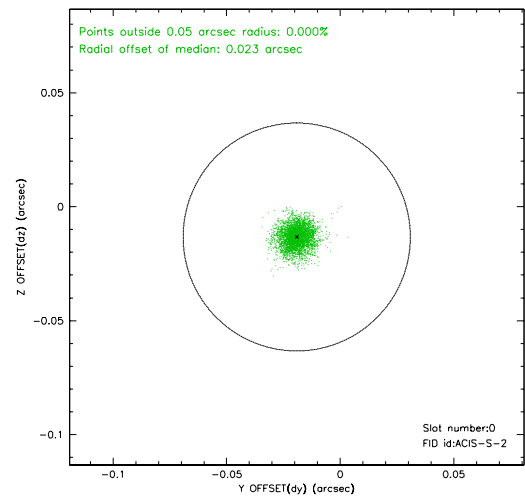
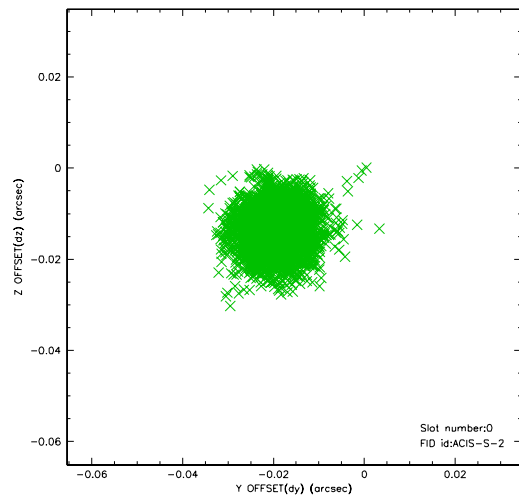


2.4.5 Slot 7

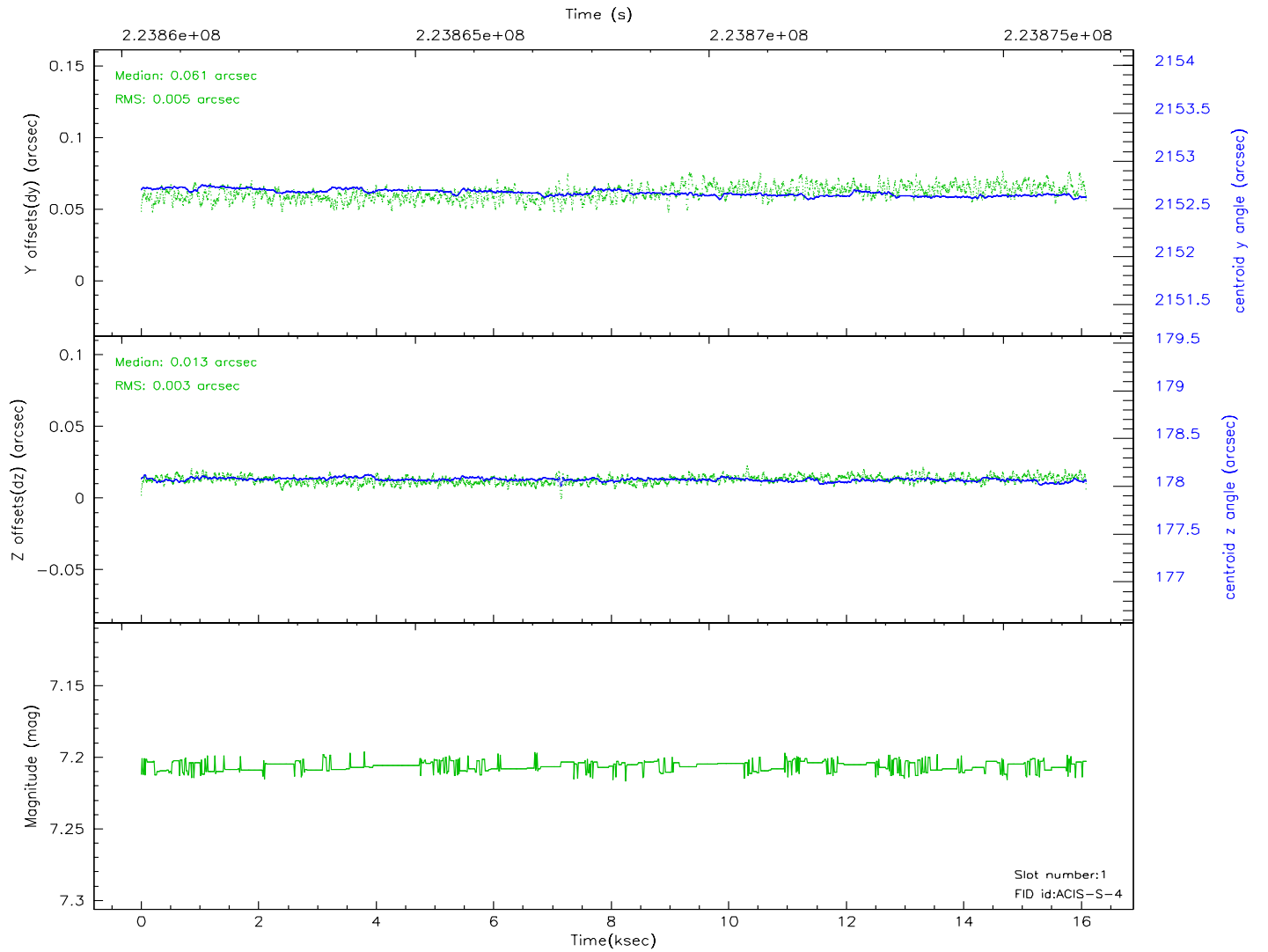
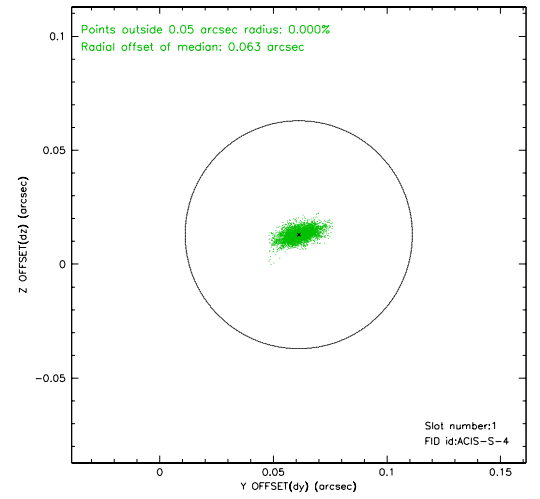
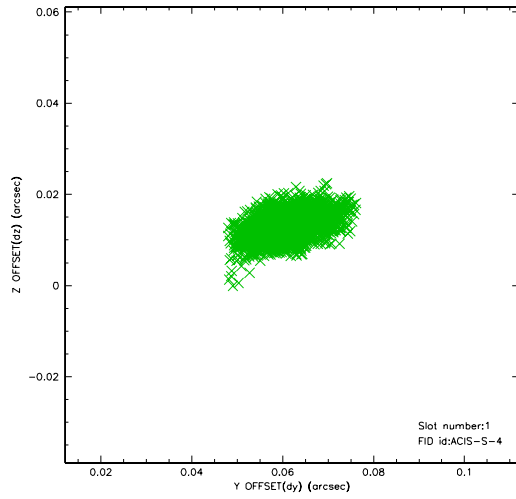


2.5 FID Slots

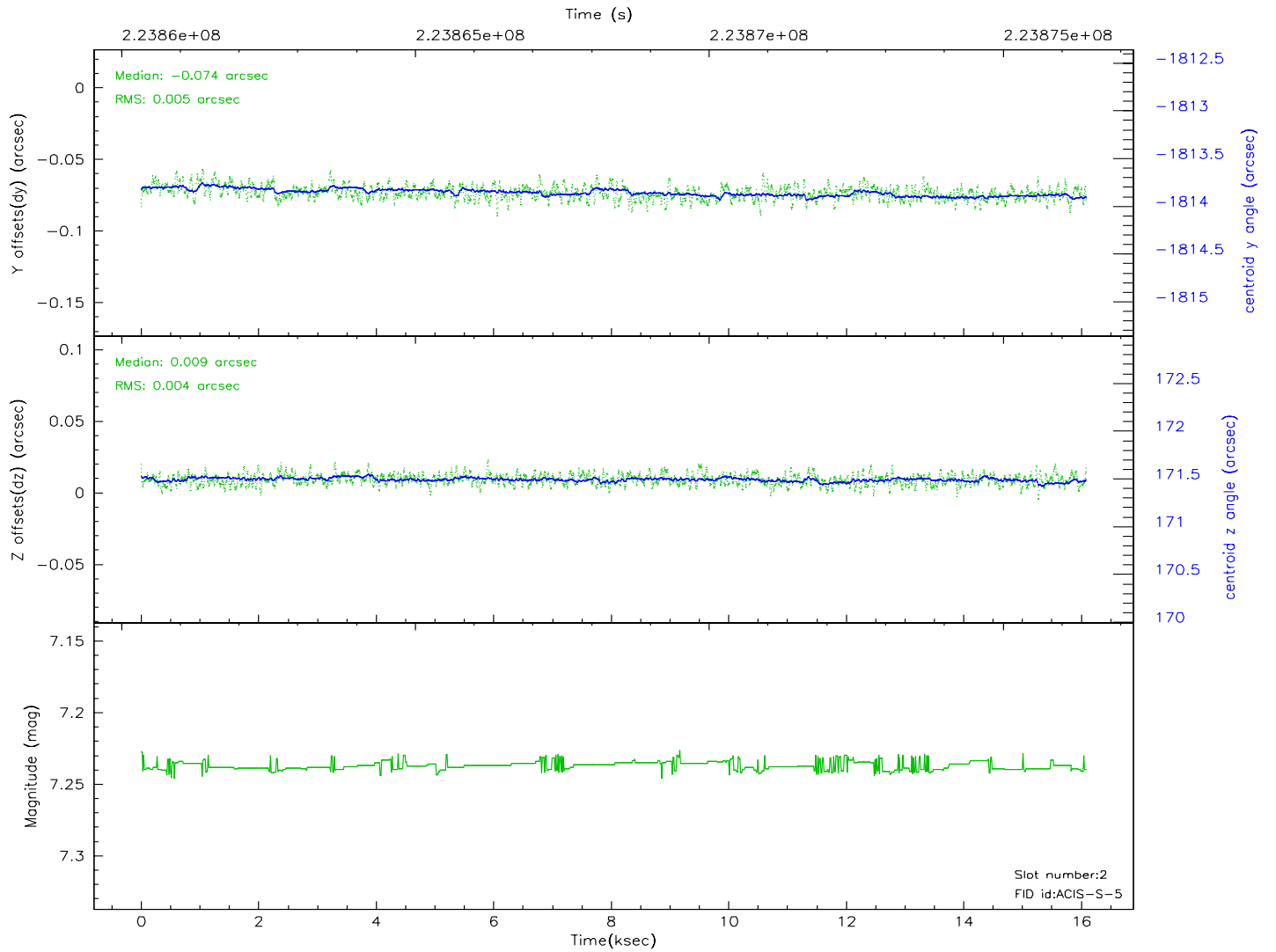
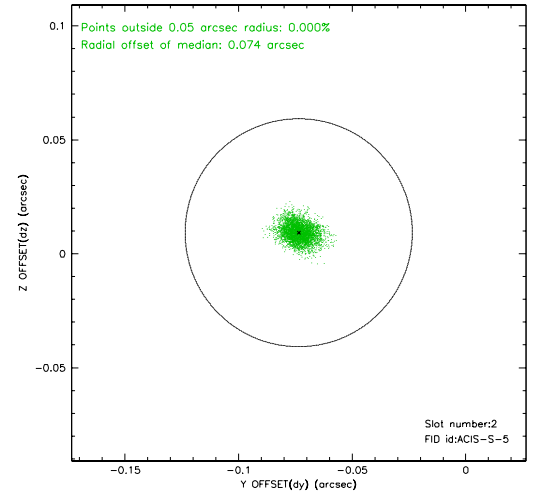
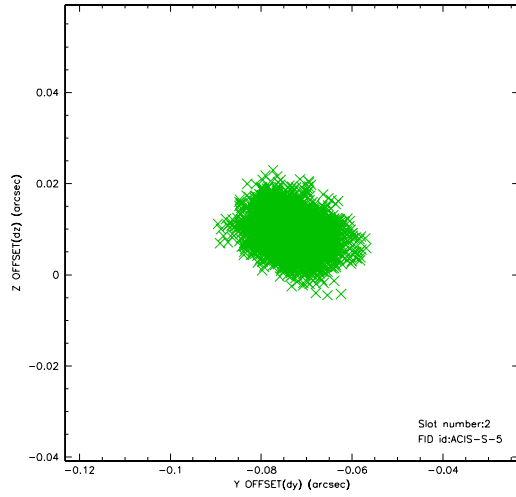
2.5.1 Slot 0



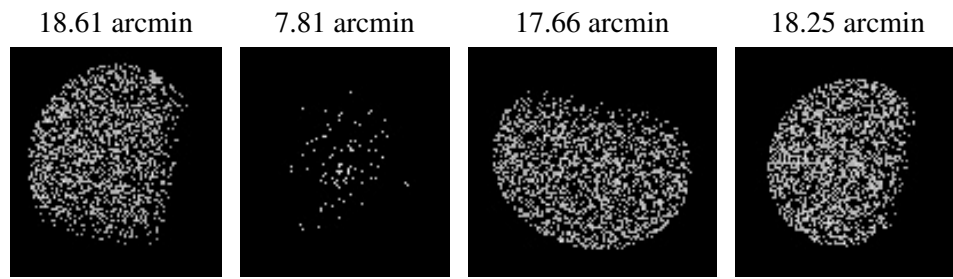
2.5.2 Slot 1



2.5.3 Slot 2



3 Point Sources



A Summary

A.1 Status

V&V Scientist	Beth Sundheim
V&V Date (YYYY-MM-DD)	2006.02.22
V&V Edition	1
V&V Disposition and Status	OK
V&V Charge Time	16.04799

A.2 Comments

Focal plane temperature is elevated, particularly in last third of observation. Calibration may be affected.