

# V&V Reference Report

## L2 ASCDS Version : 7.6.7.1

Observation 5609 - L2 Version 002  
Chandra X-Ray Center

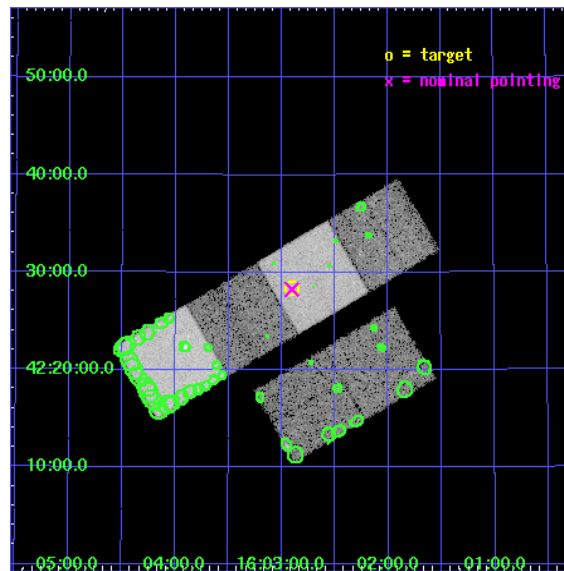
L2 Processing Date : Apr 2 2006

## Contents

<b>1</b>	<b>Front</b>	<b>2</b>
<b>2</b>	<b>OBI</b>	<b>3</b>
2.1	OBI . . . . .	3
2.1.1	Images . . . . .	3
2.1.2	Bias . . . . .	3
2.1.3	Parameters . . . . .	4
2.1.4	Events . . . . .	4
2.2	Compared Parameters . . . . .	5
2.3	Aspect . . . . .	6
2.4	Star Slots . . . . .	9
2.4.1	Slot 3 . . . . .	9
2.4.2	Slot 4 . . . . .	10
2.4.3	Slot 5 . . . . .	11
2.4.4	Slot 6 . . . . .	12
2.4.5	Slot 7 . . . . .	13
2.5	FID Slots . . . . .	14
2.5.1	Slot 0 . . . . .	14
2.5.2	Slot 1 . . . . .	15
2.5.3	Slot 2 . . . . .	16
<b>3</b>	<b>Point Sources</b>	<b>17</b>
<b>A</b>	<b>Summary</b>	<b>18</b>
A.1	Status . . . . .	18
A.2	Comments . . . . .	18

# 1 Front

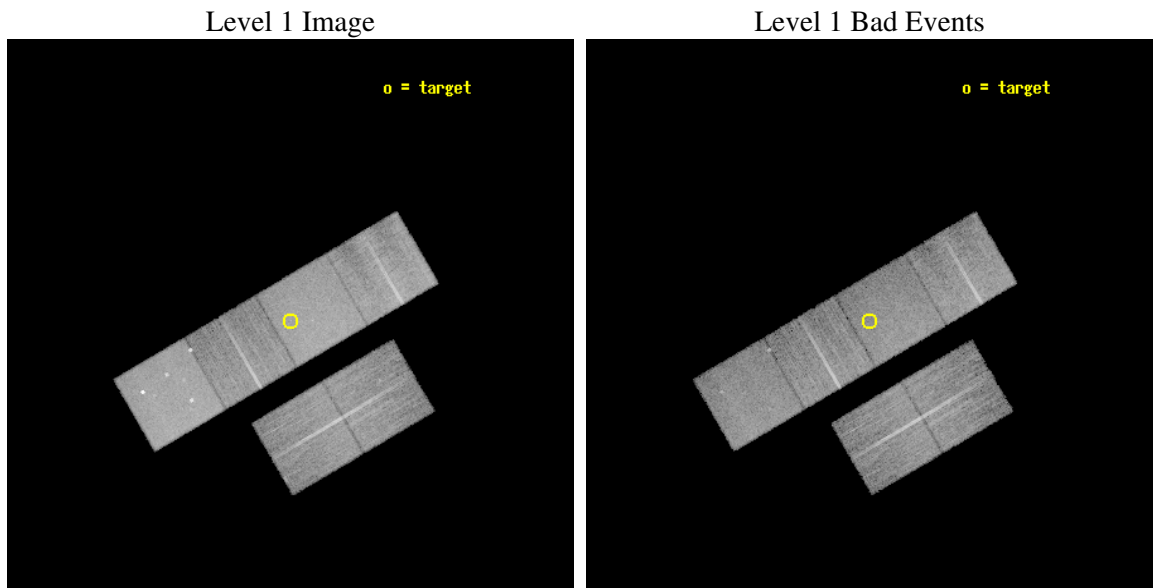
seq_num	701032
obs_id	5609
title	A Chandra Survey of the Most Distant Quasars: X-raying the First Massive Black Holes
observer	Prof. William Brandt
object	SDSS J1602+4228
dtcycle	0
cycle	P
ra_targ	240.725833
dec_targ	42.473028
ra_nom	240.72615182014
dec_nom	42.470960601114
roll_nom	329.59358375649
revision	2
ontime	13369.599950194
livetime	13200.306025418
ontime2	13369.599950194
ontime3	13366.358999819
ontime5	13369.599950194
ontime6	13369.599950194
ontime7	13369.599950194
ontime8	13366.358989894
l2events	171145



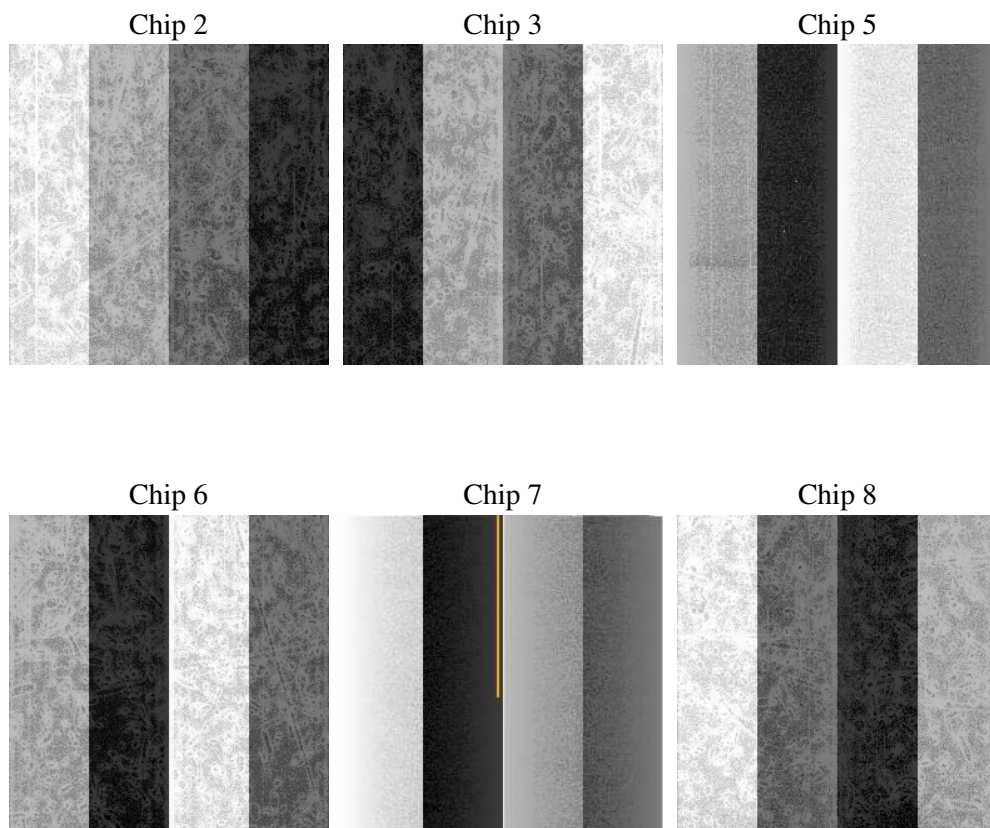
## 2 OBI

### 2.1 OBI

#### 2.1.1 Images



#### 2.1.2 Bias



### 2.1.3 Parameters

obi_num	1
ascdsver	7.6.7.1
caldsver	3.2.1
date	2006-04-02T21:18:38
revision	2

sched_exp_time	13227.027000
ontime	13557.123415053
ontime2	13557.123415053
ontime3	13553.882464677
ontime5	13557.123415053
ontime6	13557.123415053
ontime7	13557.123415053
ontime8	13553.882454753
l1events	769539

### 2.1.4 Events

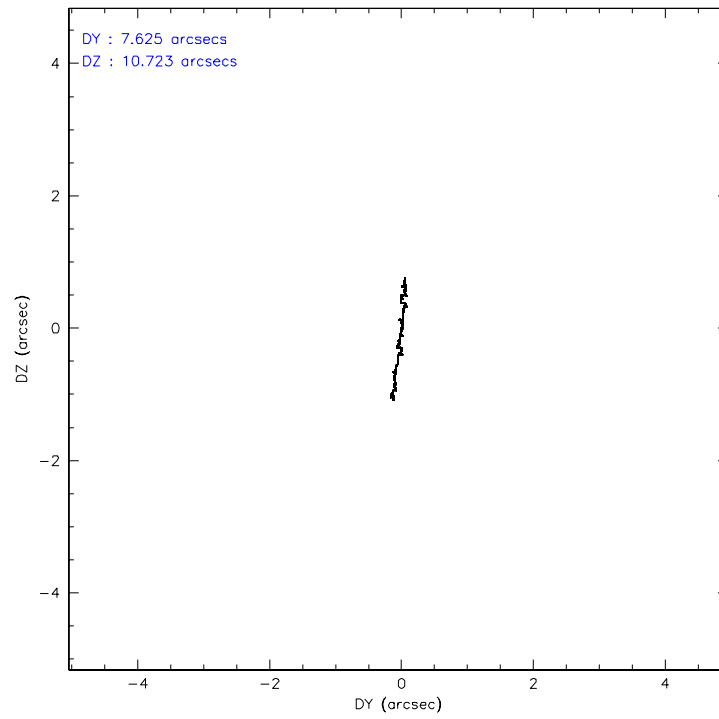
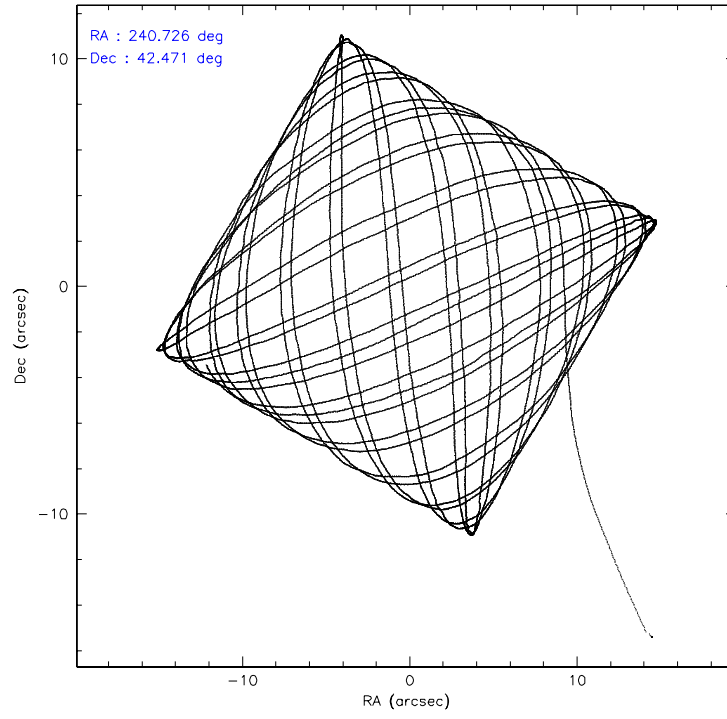
	ccd 2	ccd 3	ccd 5	ccd 6	ccd 7	ccd 8
level 1 events	109331	104326	165249	106697	147612	136324
rejected events	95583	91324	91676	93543	91762	105712
rejected %	87%	87%	55%	87%	62%	77%

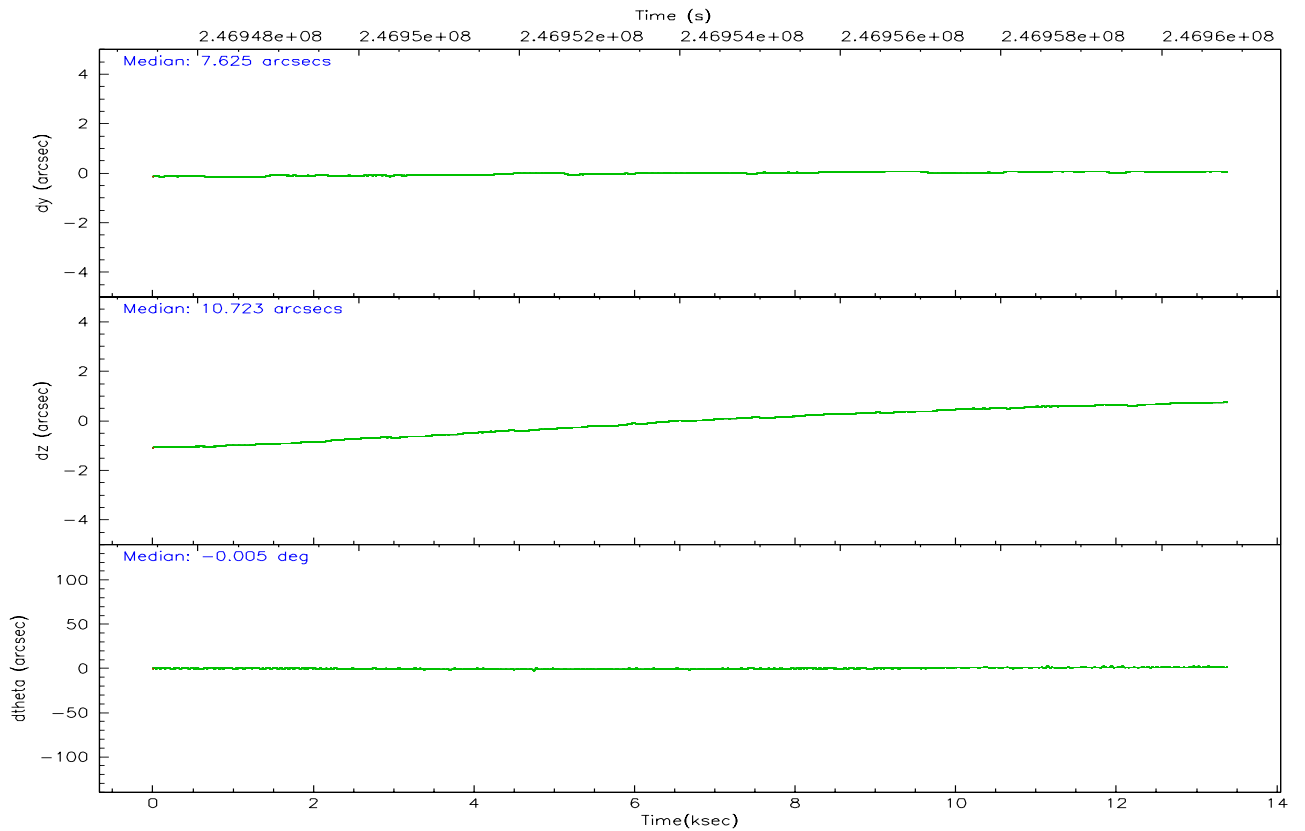
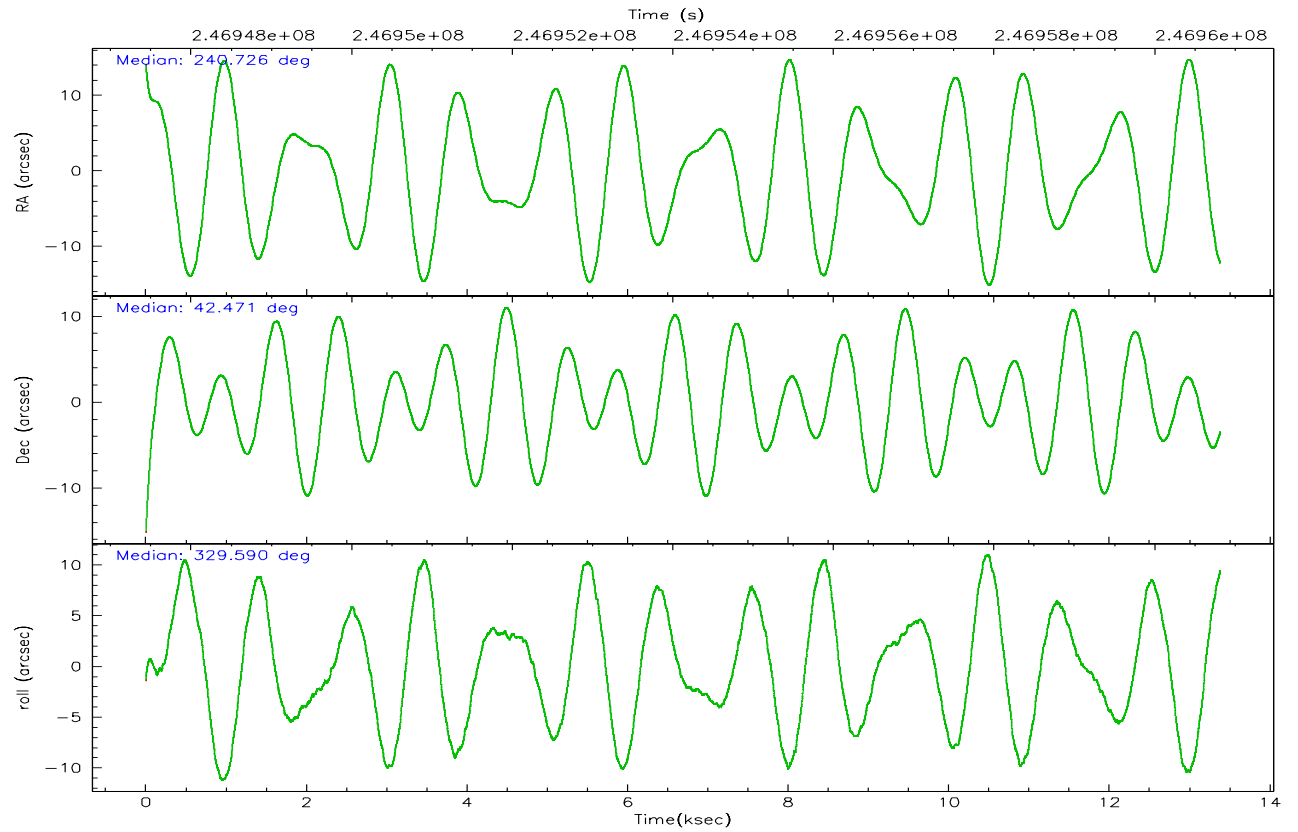
	ccd 2	ccd 3	ccd 5	ccd 6	ccd 7	ccd 8
grade 0 events	6683	6065	6642	5534	3219	9977
	6%	5%	4%	5%	2%	7%
grade 1 events	72	72	357	55	97	98
	0%	0%	0%	0%	0%	0%
grade 2 events	2661	2501	23030	2808	14121	6877
	2%	2%	13%	2%	9%	5%
grade 3 events	1247	1205	1634	1172	2686	3223
	1%	1%	0%	1%	1%	2%
grade 4 events	1210	1196	1606	1211	2590	2978
	1%	1%	0%	1%	1%	2%
grade 5 events	4140	4743	7886	4943	9106	6533
	3%	4%	4%	4%	6%	4%
grade 6 events	2112	2206	41692	2588	33997	8033
	1%	2%	25%	2%	23%	5%
grade 7 events	91206	86338	82402	88386	81796	98605
	83%	82%	49%	82%	55%	72%

## 2.2 Compared Parameters

Parameter	Planned	Actual	Parameter	Planned	Actual
Instrument	ACIS	ACIS	Obspar format version number	6	6
Detector	ACIS-235678	ACIS-235678	Obspar file type	PREDICTED	ACTUAL
Grating	NONE	NONE	Obspar update status	NONE	UPDATED
Data mode	FAINT	FAINT	On-chip summing requested	N	N
Observation mode	POINTING	POINTING	Subarray requested	NONE	NONE
Pointing RA	240.689217	240.726151820143	Alternating exposures requested	N	N
Pointing Dec	42.470781	42.47096060111429	Primary exposure time	0.000000	3.2
Pointing Roll	329.461894	329.5935837564884			
SIM focus pos (mm)	-0.684267	-0.6828225247311905			
SIM defocus (mm)	0	0.001444936568705701			
SIM translation stage pos (mm)	-190.132523	-190.1425803651734			
SIM translation stage offset (mm)	0	0.01005778216563158			
Observation start time	246947594.184000	246946447.5861			
Observation start date	2005-10-29T04:32:10	2005-10-29T04:14:07			
Observation end time	246960821.184000	246961047.68678			
Observation end date	2005-10-29T08:12:37	2005-10-29T08:17:27			
Read mode	TIMED	TIMED			

## 2.3 Aspect





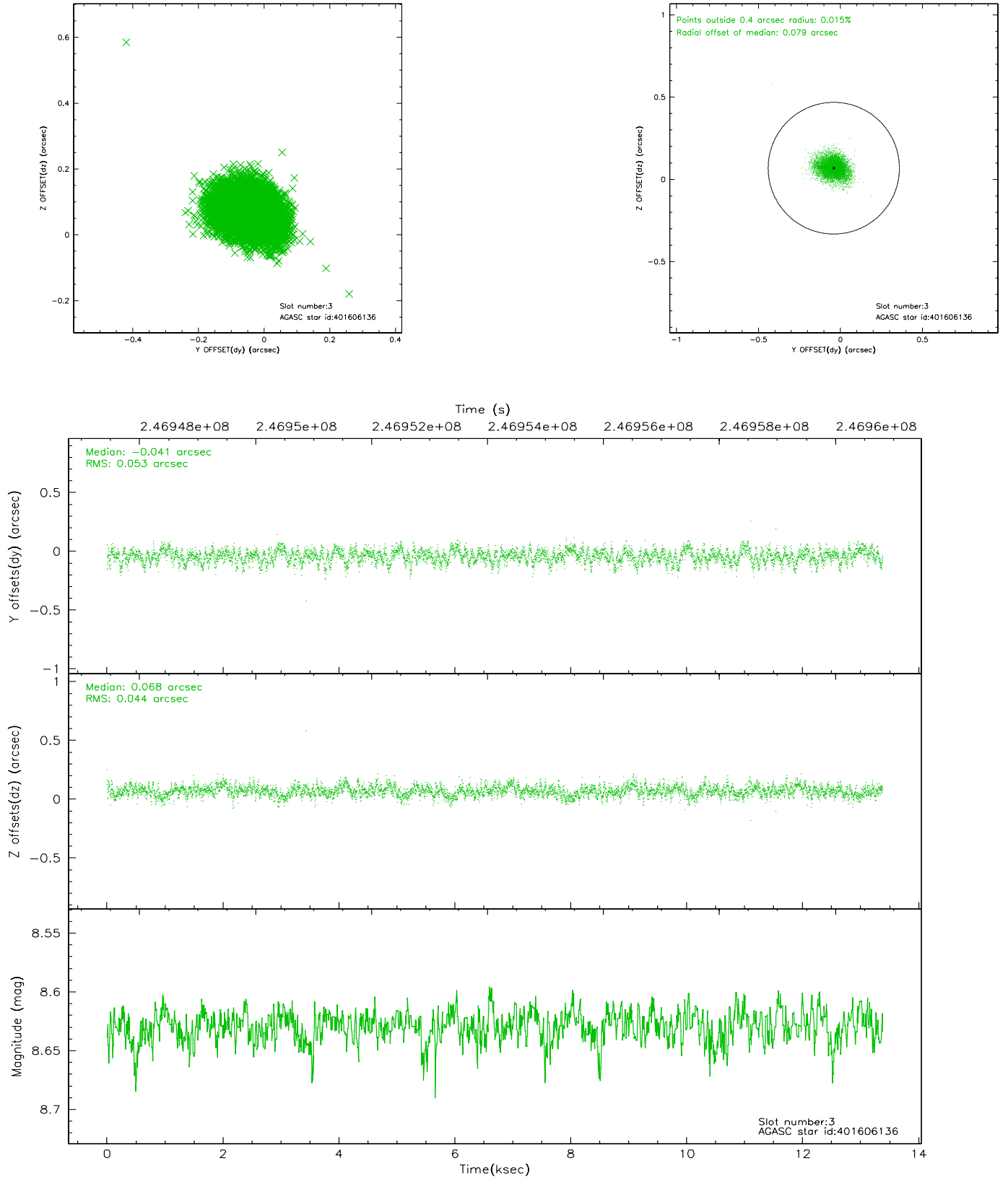
### Slot Statistics

slot	status	id	mag	n_pts	med_dy	med_dz	dr1	dr2	ra	dec	mean_y	mean_z
0	FID	ACIS-S-2	7.10	3264	-0.028	0.007	0.011	0.017	0.000000	0.000000	-760.36	-1731.86
1	FID	ACIS-S-4	7.21	3264	0.056	0.012	0.009	0.016	0.000000	0.000000	2152.79	176.32
2	FID	ACIS-S-5	7.24	3263	-0.058	-0.009	0.008	0.014	0.000000	0.000000	-1812.82	170.30
3	GUIDE	401606136	8.63	6522	-0.041	0.068	0.072	0.120	241.147440	41.904129	2092.36	-1129.97
4	GUIDE	402008032	9.15	6525	0.047	-0.007	0.088	0.144	240.713470	43.039771	-985.64	1796.60
5	GUIDE	402009440	8.74	6523	0.006	-0.038	0.066	0.107	240.439336	42.842846	-1249.21	819.67
6	GUIDE	402011280	8.55	6525	-0.001	-0.002	0.056	0.093	240.118930	42.990142	-2246.25	851.88
7	GUIDE	401605872	8.20	6525	-0.013	-0.024	0.067	0.110	241.346180	42.026652	2321.96	-478.16

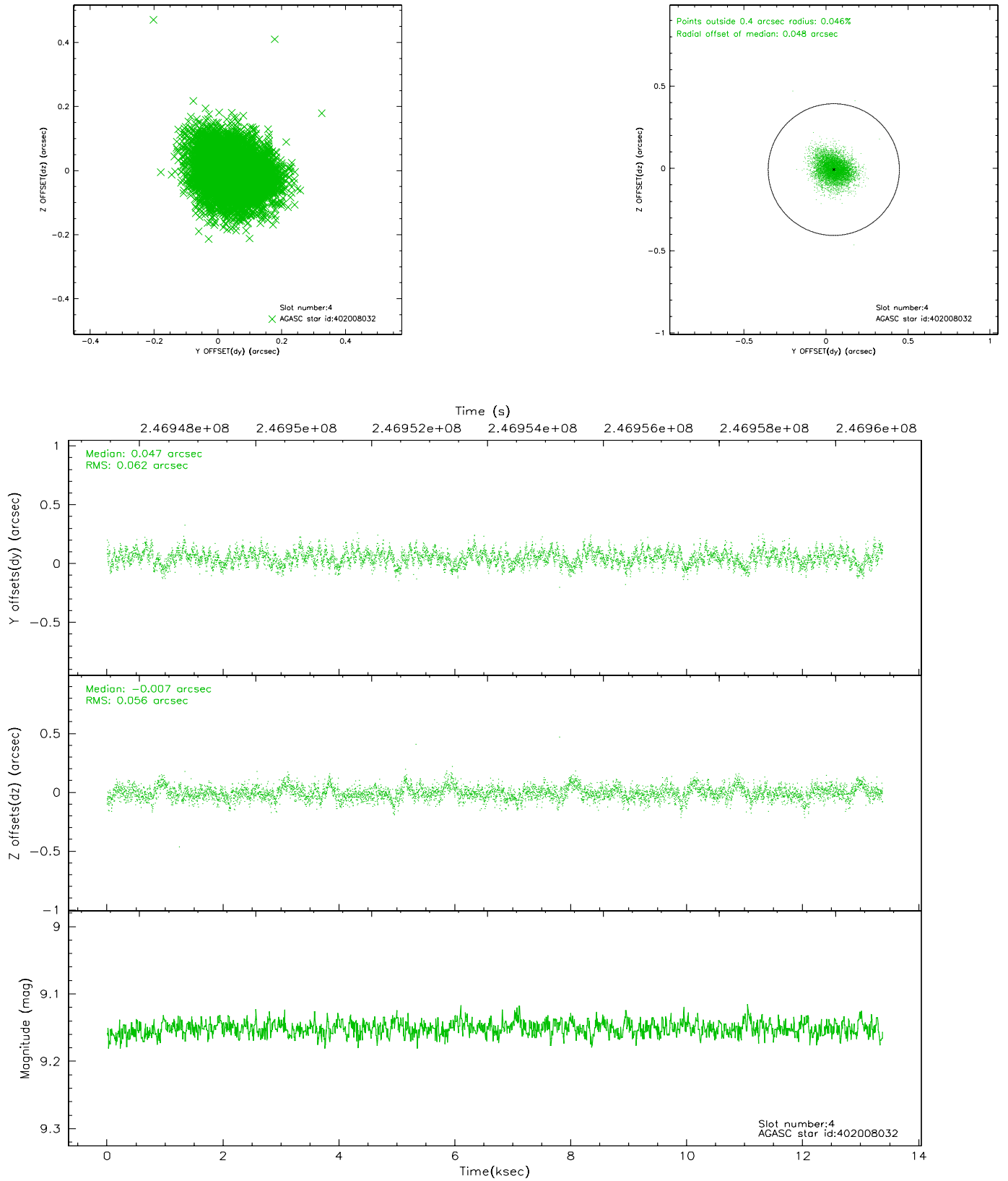


## 2.4 Star Slots

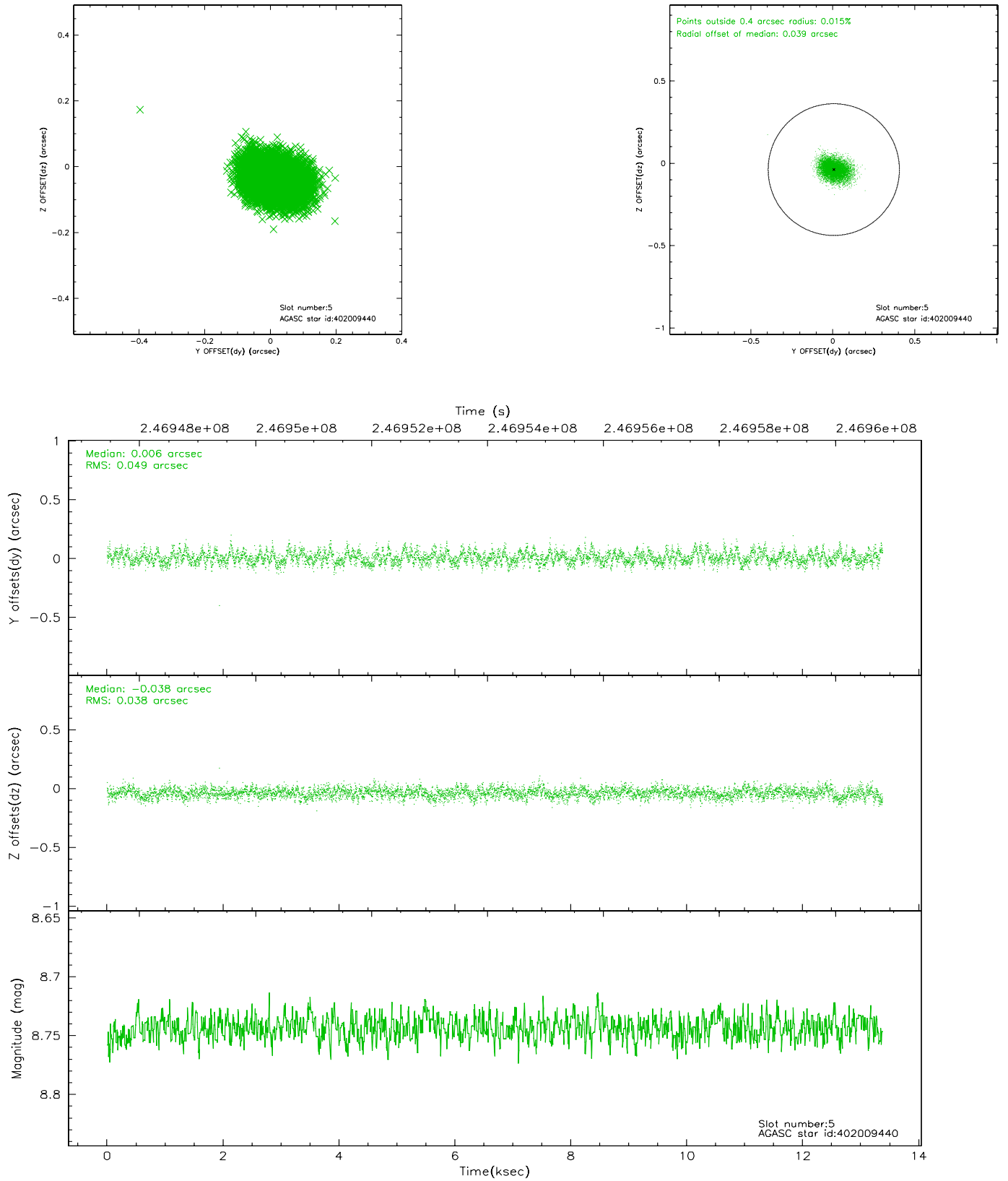
### 2.4.1 Slot 3



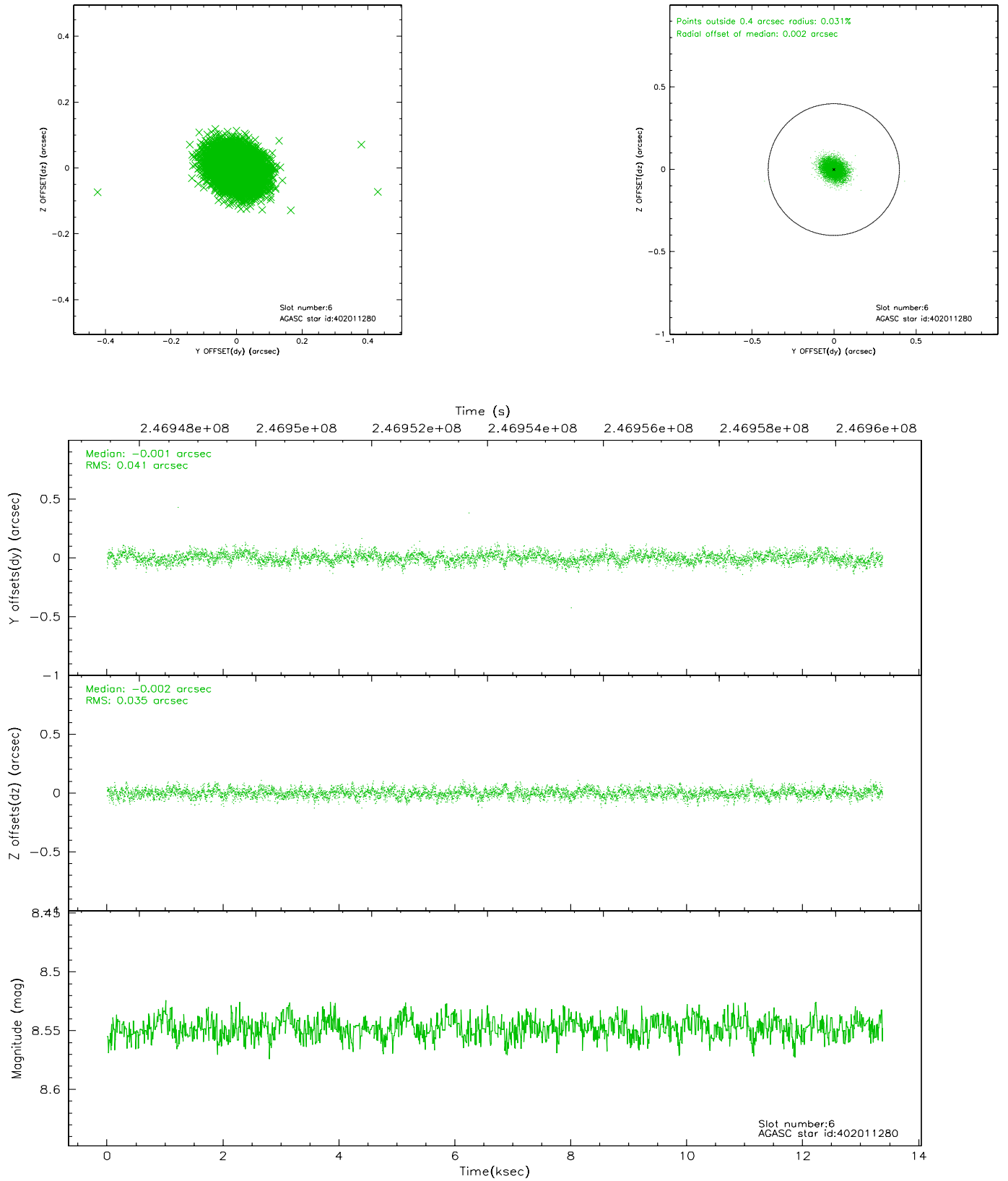
## 2.4.2 Slot 4



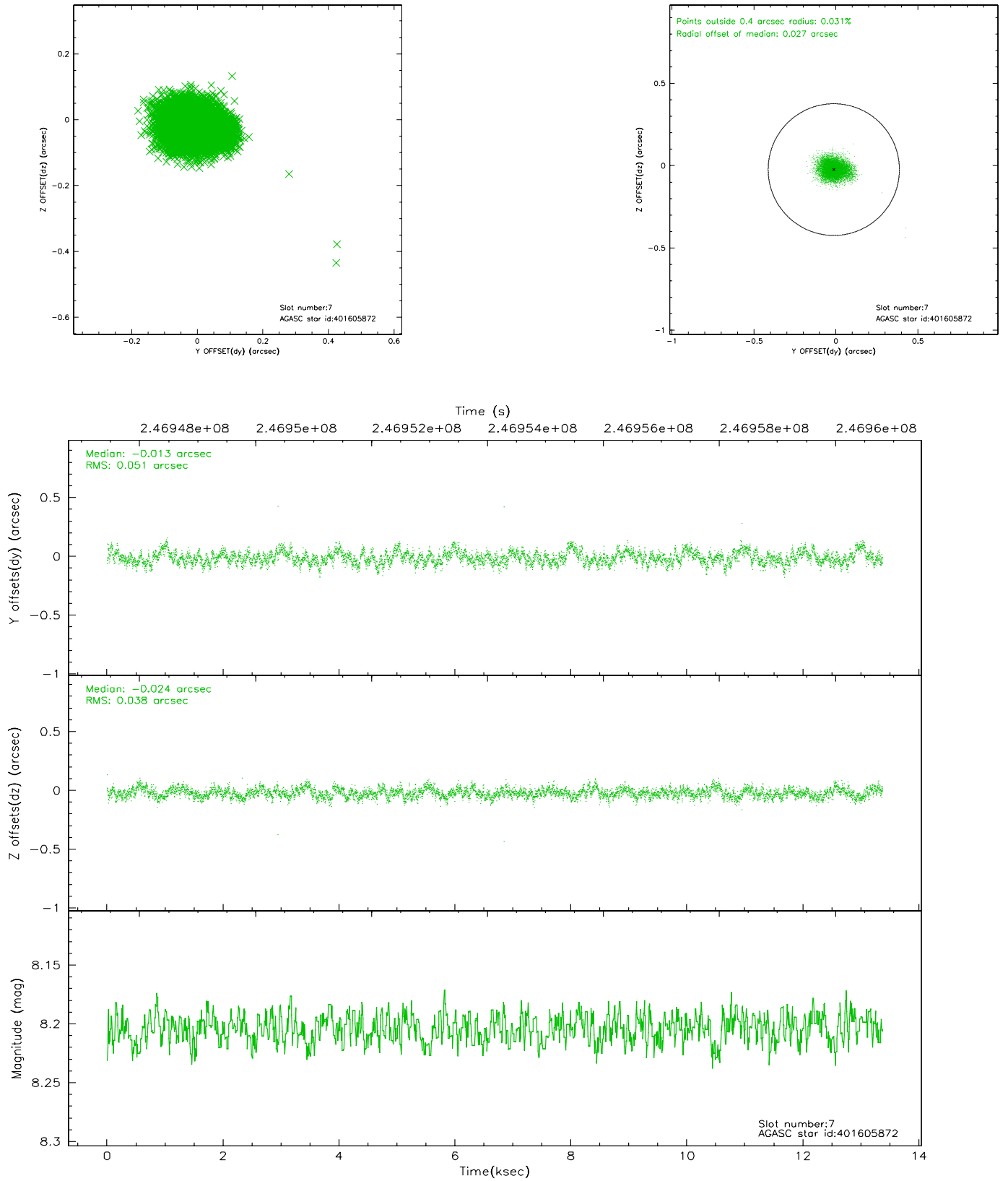
### 2.4.3 Slot 5



## 2.4.4 Slot 6

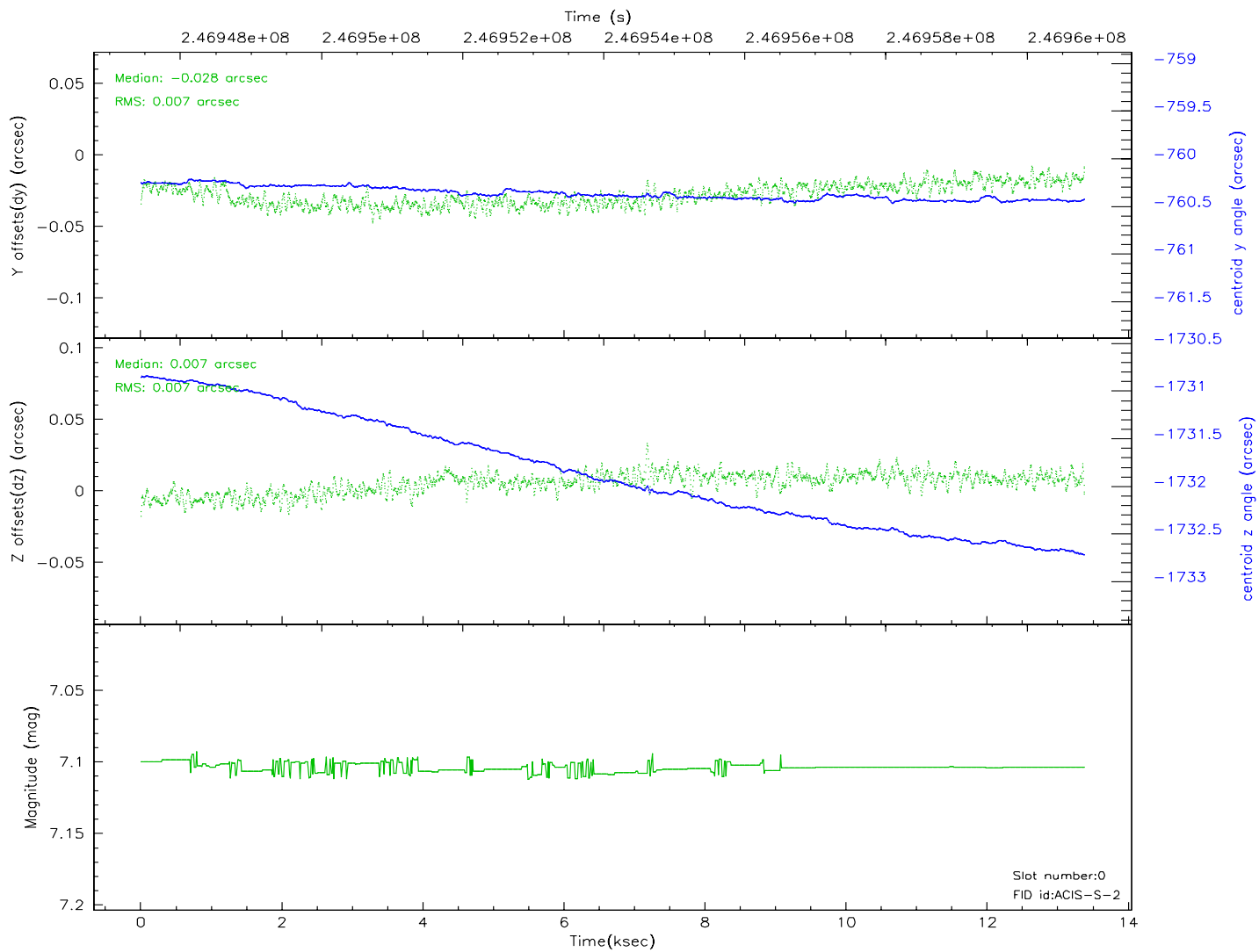
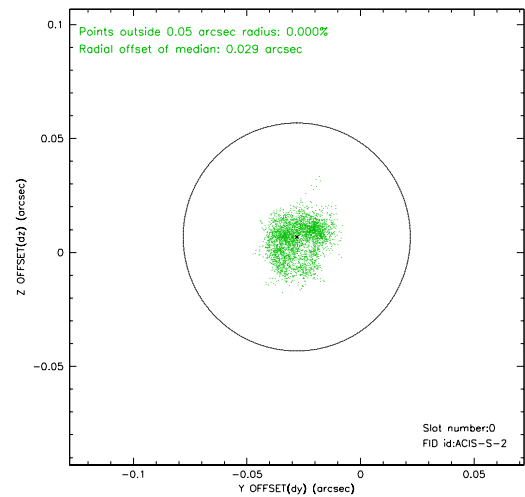
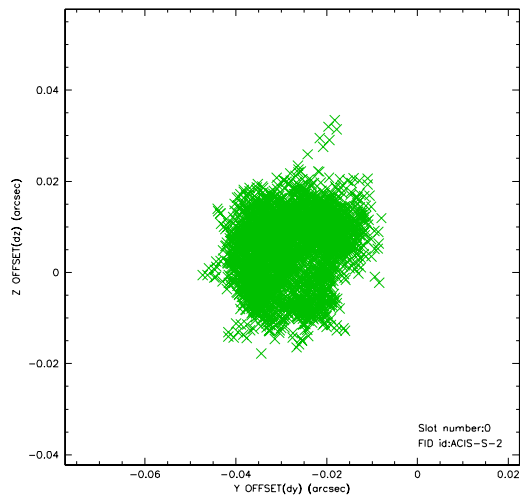


## 2.4.5 Slot 7

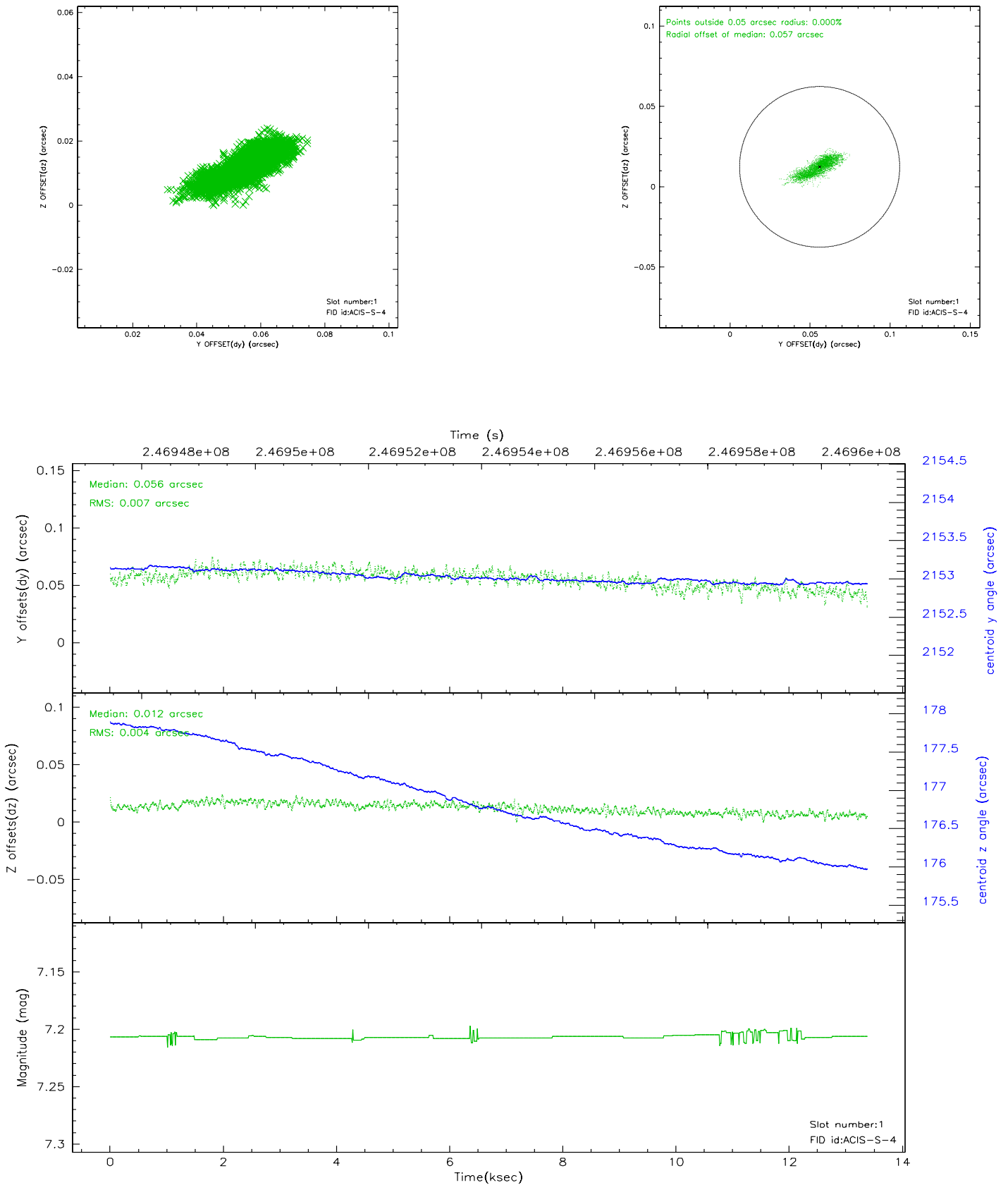


## 2.5 FID Slots

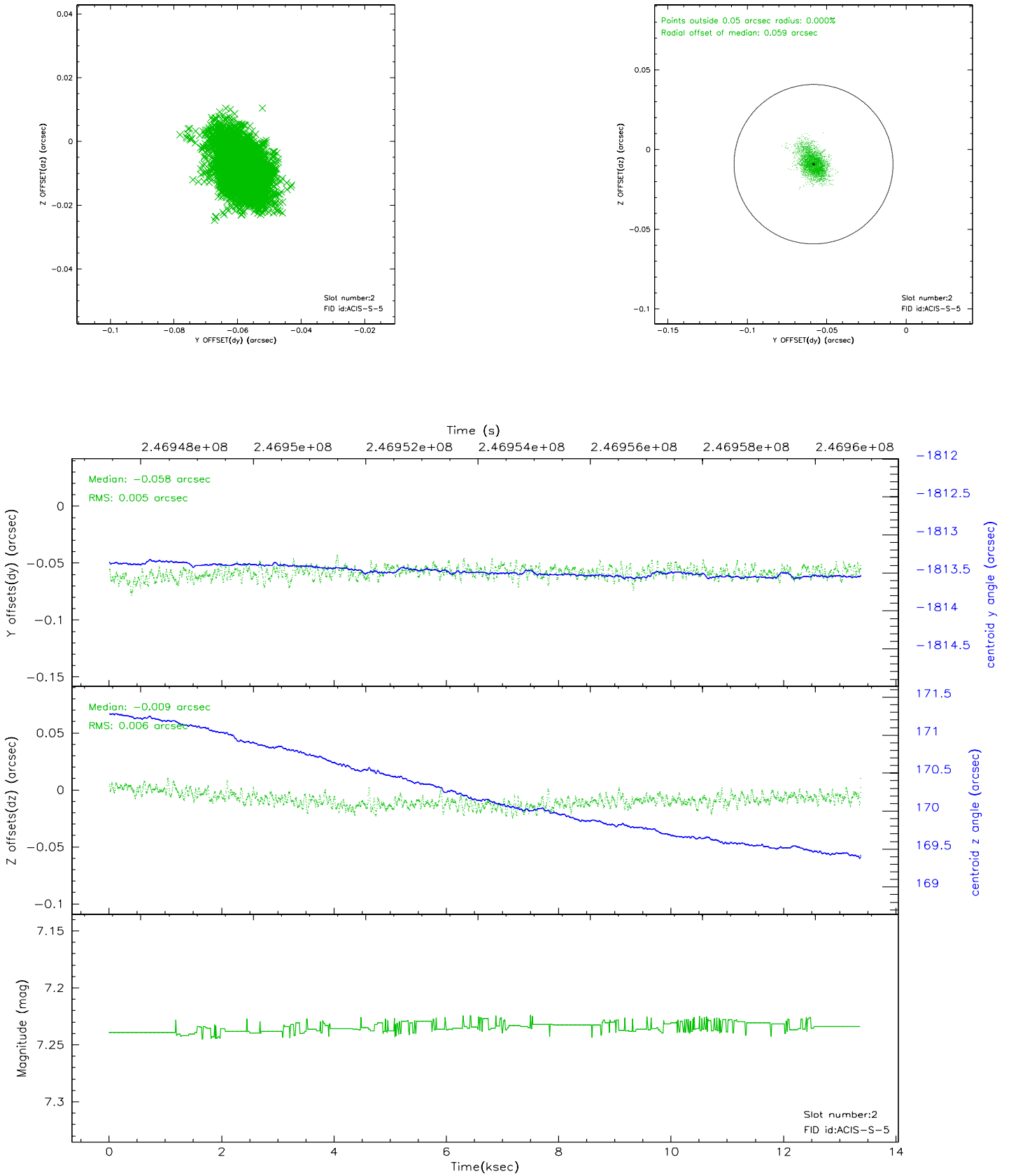
### 2.5.1 Slot 0



## 2.5.2 Slot 1

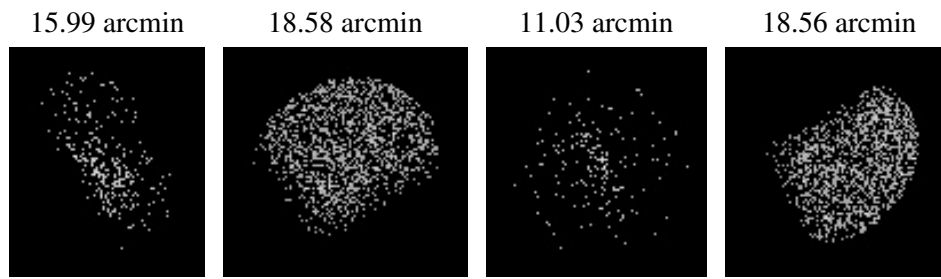


### 2.5.3 Slot 2





### 3 Point Sources



## A Summary

### A.1 Status

V&V Scientist	Jen Lauer
V&V Date (YYYY-MM-DD)	2006.04.03
V&V Edition	1
V&V Disposition and Status	OK
V&V Charge Time	13.36959

### A.2 Comments