

V&V Reference Report

L2 ASCDS Version : 7.6.7.1

Observation 5605 - L2 Version 002
Chandra X-Ray Center

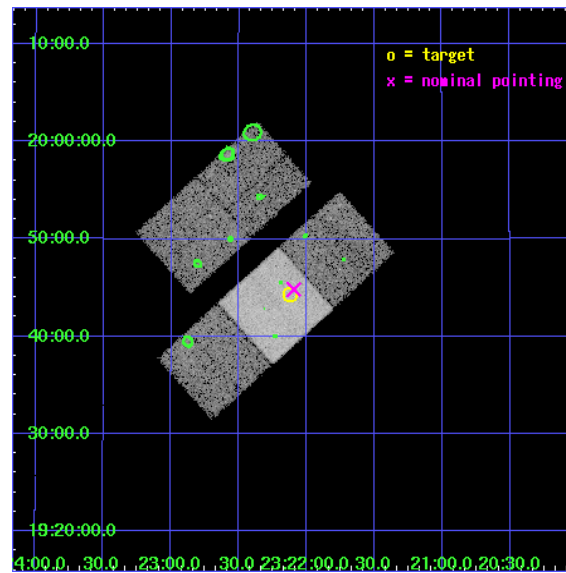
L2 Processing Date : Mar 19 2006

Contents

1	Front	2
2	OBI	3
2.1	OBI	3
2.1.1	Images	3
2.1.2	Bias	3
2.1.3	Parameters	4
2.1.4	Events	4
2.2	Compared Parameters	5
2.3	Aspect	6
2.4	Star Slots	9
2.4.1	Slot 3	9
2.4.2	Slot 4	10
2.4.3	Slot 5	11
2.4.4	Slot 6	12
2.4.5	Slot 7	13
2.5	FID Slots	14
2.5.1	Slot 0	14
2.5.2	Slot 1	15
2.5.3	Slot 2	16
3	Point Sources	17
A	Summary	18
A.1	Status	18
A.2	Comments	18

1 Front

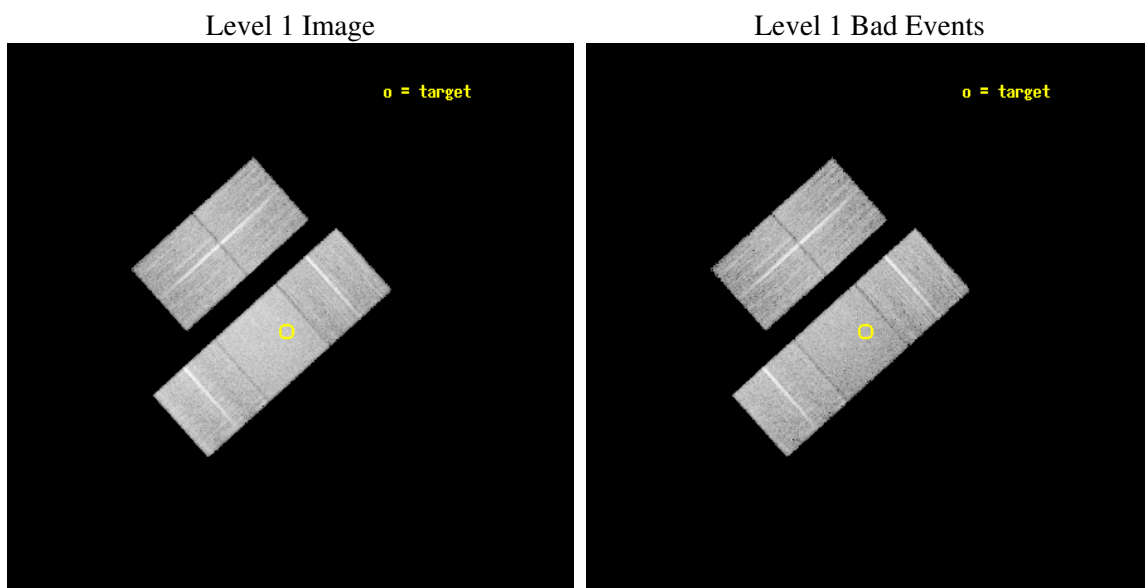
seq_num	701028
obs_id	5605
title	A Study of Quasar Evolution With The Aid Of Lensing
observer	Prof. Gordon Garmire
object	PSS2322+1944
dtcycle	0
cycle	P
ra_targ	350.53
dec_targ	19.739722
ra_nom	350.52371920754
dec_nom	19.747297467121
roll_nom	137.95993708085
revision	2
ontime	13776.399973512
livetime	13596.40116582
ontime2	13776.399973512
ontime3	13776.399973512
ontime6	13773.259003282
ontime7	13776.399973512
ontime8	13776.399973512
l2events	92317



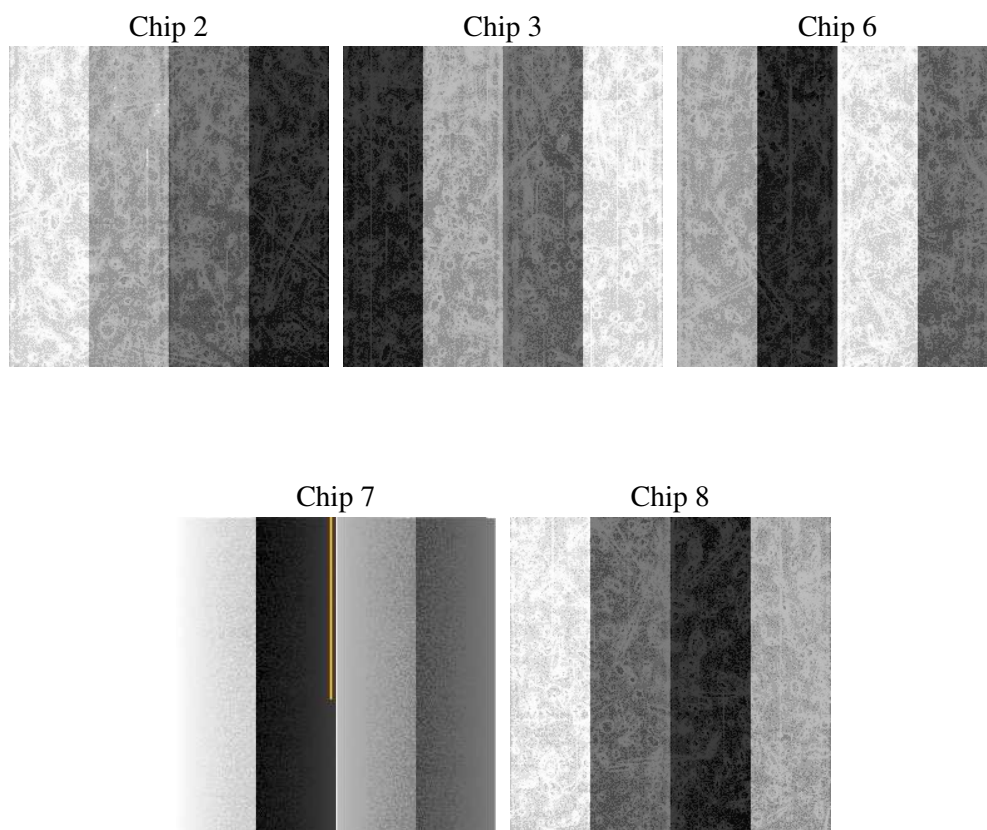
2 OBI

2.1 OBI

2.1.1 Images



2.1.2 Bias



2.1.3 Parameters

obi_num	2
ascdsver	7.6.7.1
caldbver	3.2.1
date	2006-03-19T04:36:32
revision	2

sched_exp_time	13599.538000
ontime	14897.805283278
ontime2	14897.805283278
ontime3	14897.805283278
ontime6	14894.664313048
ontime7	14897.805283278
ontime8	14897.805283278
l1events	596985

2.1.4 Events

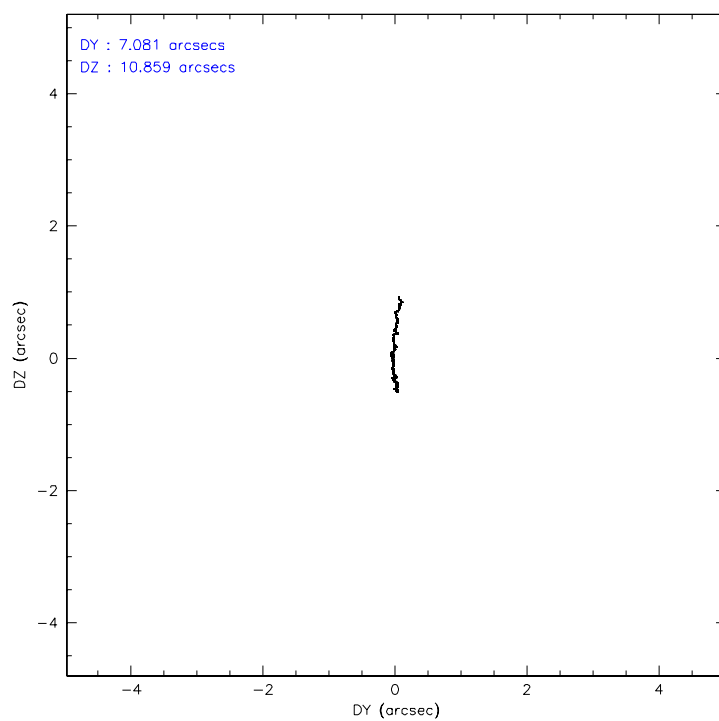
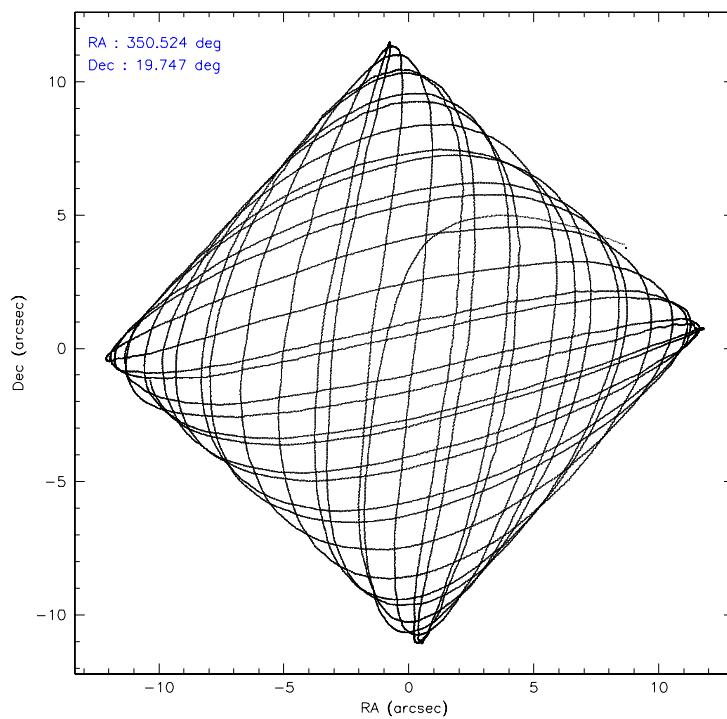
	ccd 2	ccd 3	ccd 6	ccd 7	ccd 8
level 1 events	103564	102944	110021	146385	134071
rejected events	91778	91300	98116	95235	107836
rejected %	88%	88%	89%	65%	80%

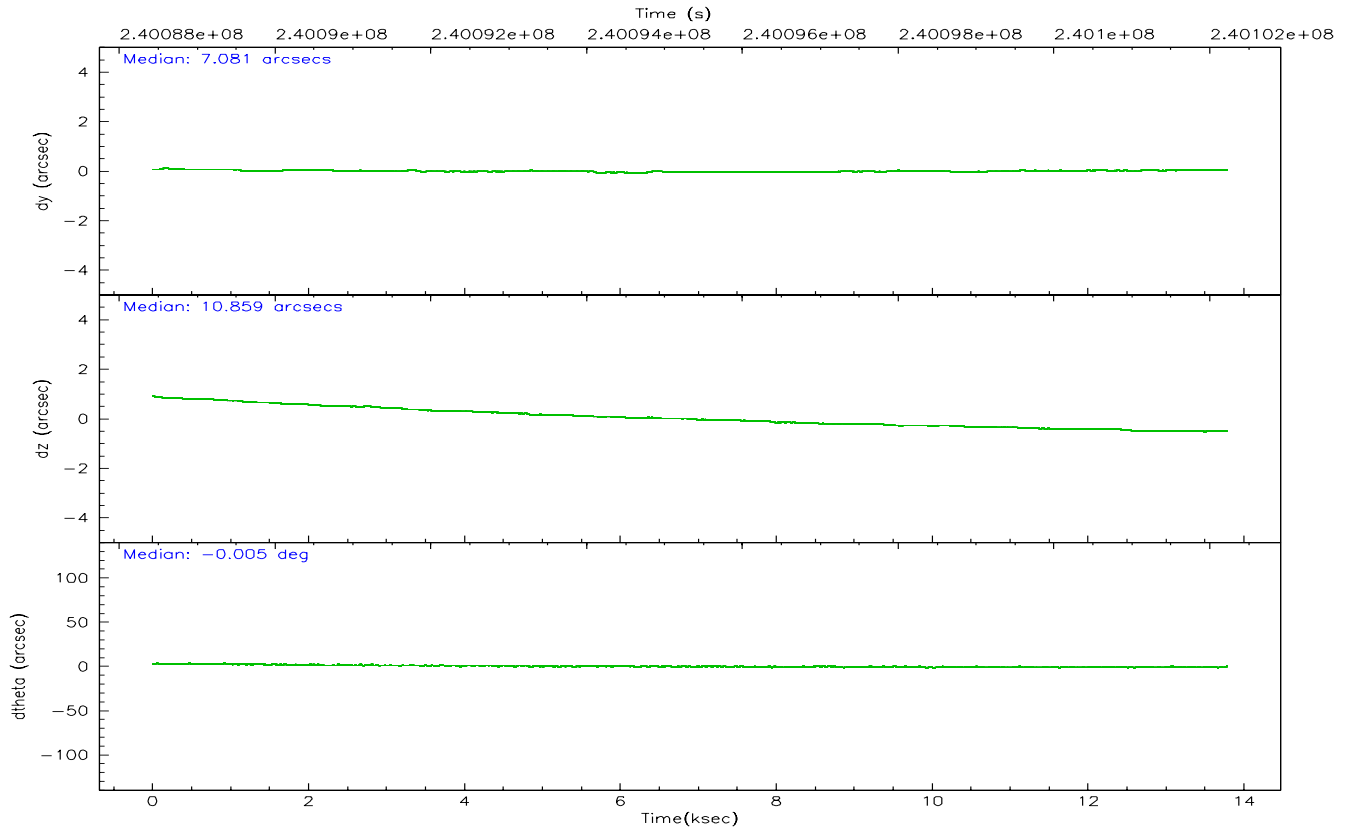
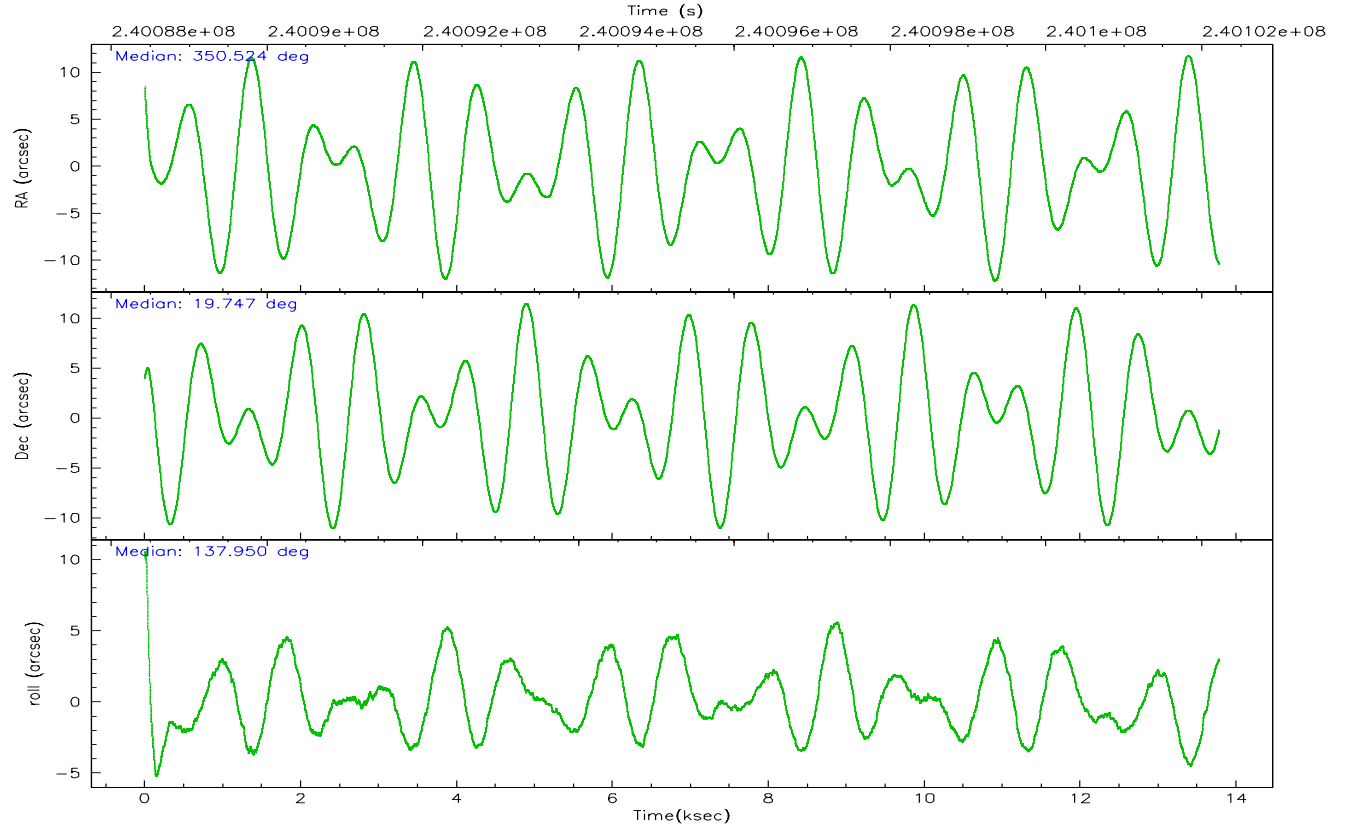
	ccd 2	ccd 3	ccd 6	ccd 7	ccd 8
grade 0 events	5762	5396	5101	3088	9098
	5%	5%	4%	2%	6%
grade 1 events	33	81	41	101	99
	0%	0%	0%	0%	0%
grade 2 events	2626	2528	2745	13715	6277
	2%	2%	2%	9%	4%
grade 3 events	1195	1233	1275	2646	2912
	1%	1%	1%	1%	2%
grade 4 events	1130	1186	1192	2588	2768
	1%	1%	1%	1%	2%
grade 5 events	4017	4990	4971	9024	6456
	3%	4%	4%	6%	4%
grade 6 events	2032	2202	2574	33336	7382
	1%	2%	2%	22%	5%
grade 7 events	86769	85328	92122	81887	99079
	83%	82%	83%	55%	73%

2.2 Compared Parameters

Parameter	Planned	Actual	Parameter	Planned	Actual
Instrument	ACIS	ACIS	Obspar format version number	6	6
Detector	ACIS-23678	ACIS-23678	Obspar file type	PREDICTED	ACTUAL
Grating	NONE	NONE	Obspar update status	NONE	UPDATED
Data mode	VFAINT	VFAINT	On-chip summing requested	N	N
Observation mode	POINTING	POINTING	Subarray requested	NONE	NONE
Pointing RA	350.552070	350.5237192075355	Alternating exposures requested	N	N
Pointing Dec	19.742028	19.74729746712088	Primary exposure time	0.000000	3.1
Pointing Roll	137.793715	137.9599370808521			
SIM focus pos (mm)	-0.684267	-0.6828225247311905			
SIM defocus (mm)	0	0.001444936568705701			
SIM translation stage pos (mm)	-190.132523	-190.1425803651734			
SIM translation stage offset (mm)	0	0.01005778216563158			
Observation start time	240088618.184000	240087062.19577			
Observation start date	2005-08-10T19:15:54	2005-08-10T18:51:02			
Observation end time	240102217.184000	240102447.95897			
Observation end date	2005-08-10T23:02:33	2005-08-10T23:07:27			
Read mode	TIMED	TIMED			

2.3 Aspect



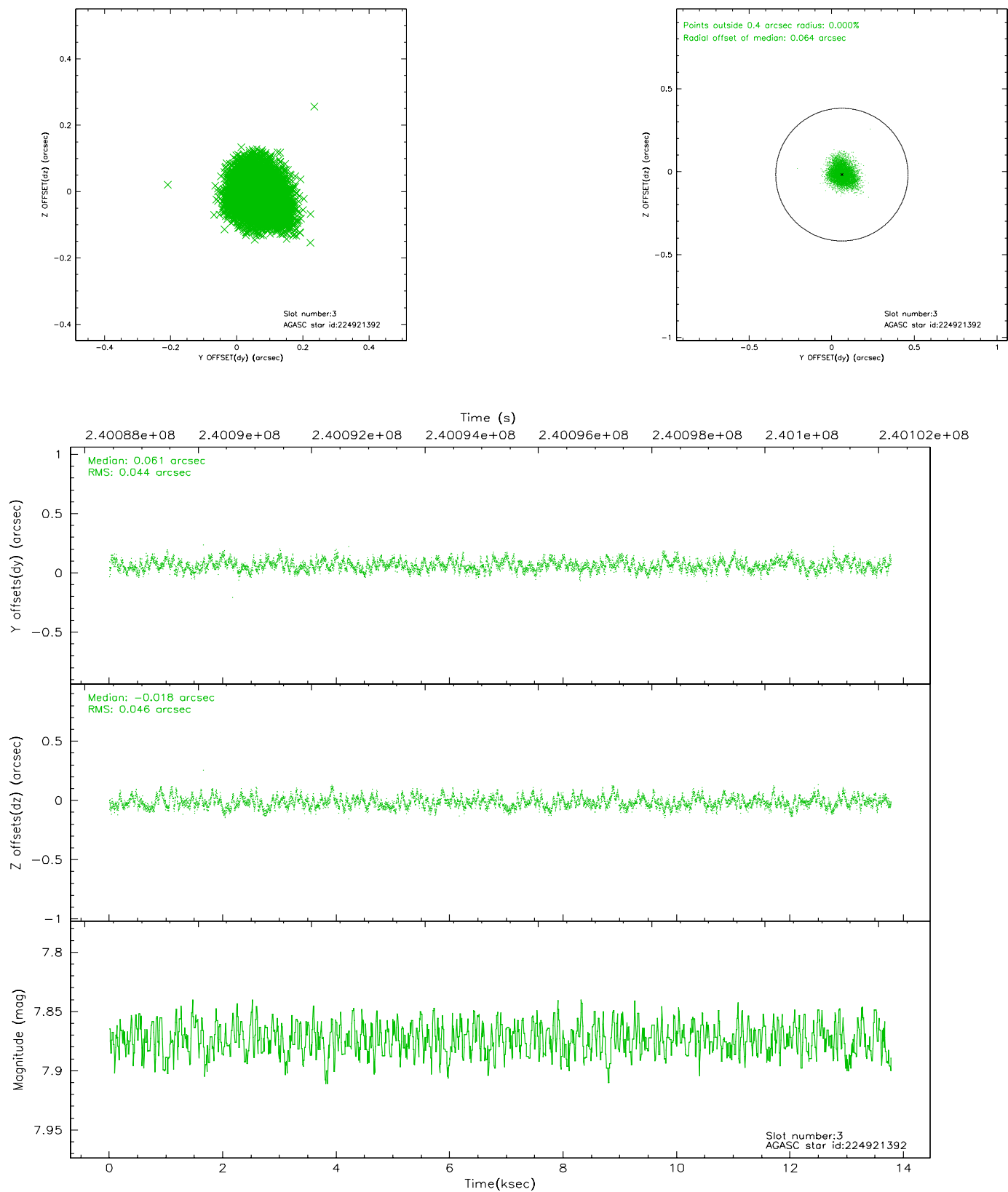


Slot Statistics

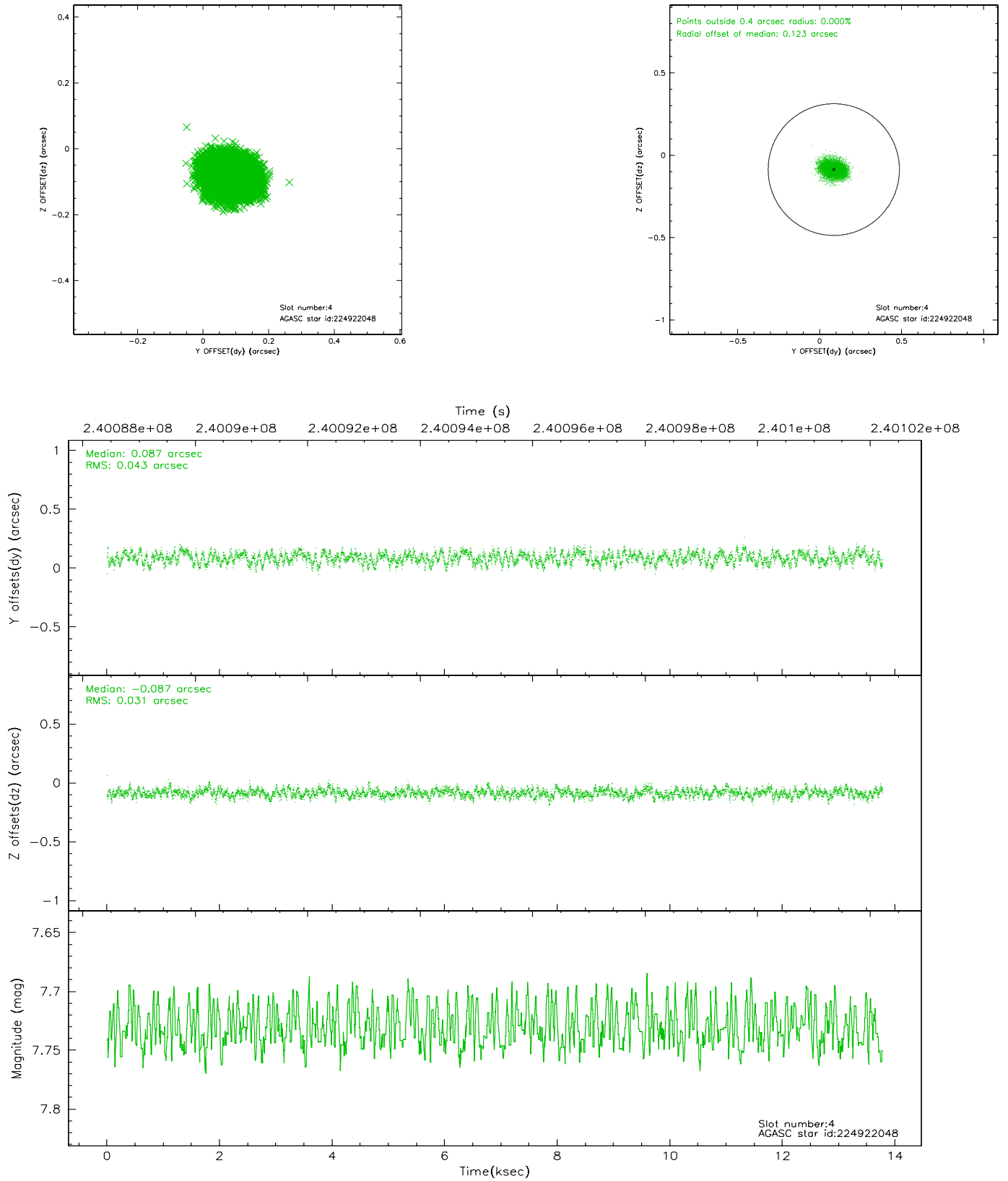
slot	status	id	mag	n_pts	med_dy	med_dz	dr1	dr2	ra	dec	mean_y	mean_z
0	FID	ACIS-S-2	7.10	3361	-0.043	-0.001	0.009	0.019	0.000000	0.000000	-759.84	-1732.14
1	FID	ACIS-S-4	7.21	3361	0.055	0.021	0.009	0.018	0.000000	0.000000	2153.33	176.07
2	FID	ACIS-S-5	7.23	3362	-0.044	-0.011	0.008	0.013	0.000000	0.000000	-1812.29	170.02
3	GUIDE	224921392	7.87	6722	0.061	-0.018	0.068	0.108	350.555111	19.400096	-835.32	905.48
4	GUIDE	224922048	7.73	6721	0.087	-0.087	0.058	0.090	350.167102	19.840789	1205.74	611.79
5	GUIDE	225326160	8.84	6720	0.069	0.050	0.083	0.136	350.963259	20.089095	-188.35	-1860.56
6	GUIDE	225327424	9.37	6720	-0.123	0.352	0.095	0.150	350.878759	20.348391	651.03	-2358.30
7	GUIDE	224924376	7.64	6722	-0.098	-0.298	0.064	0.105	350.016141	19.311780	309.87	2367.92

2.4 Star Slots

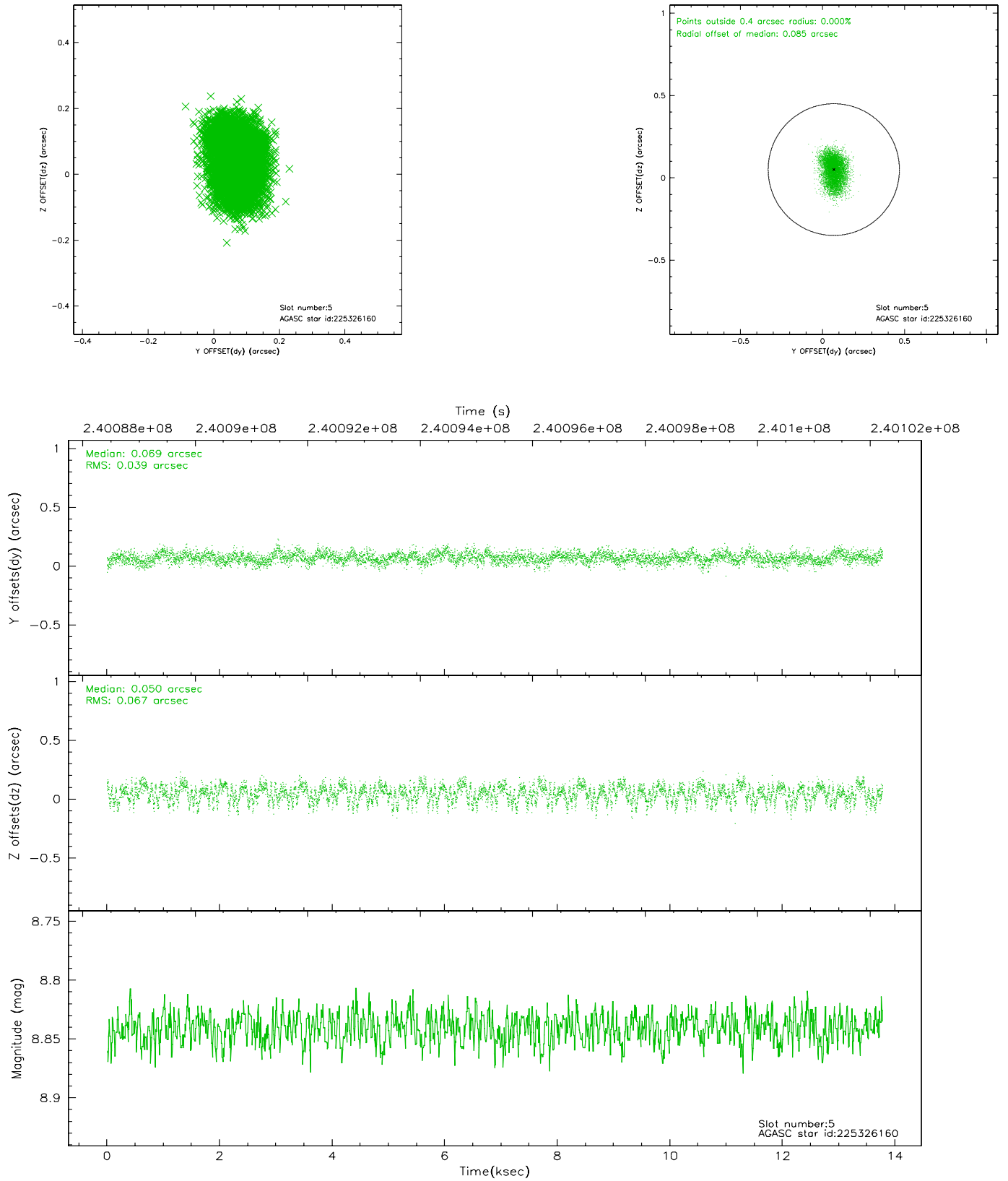
2.4.1 Slot 3



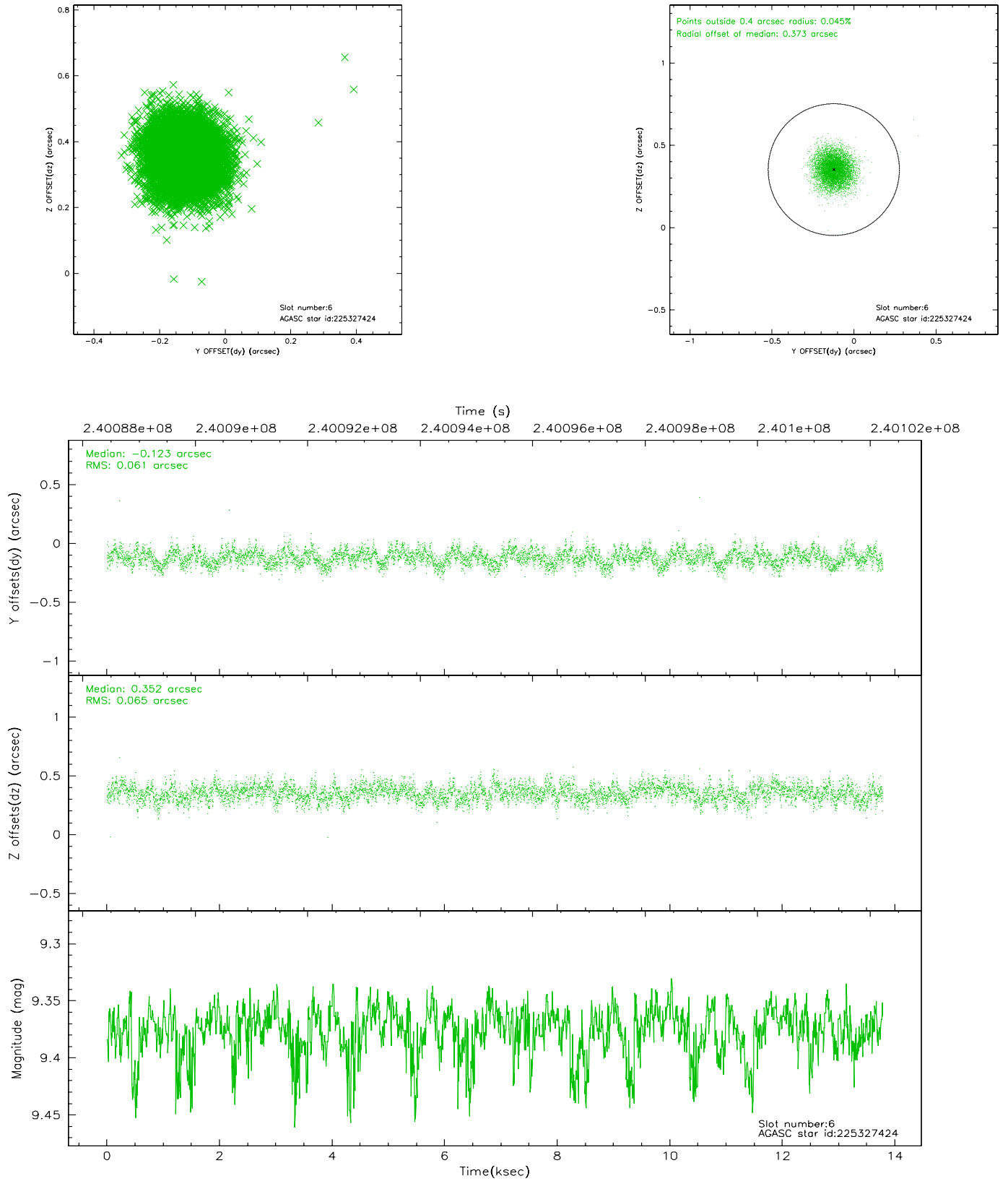
2.4.2 Slot 4



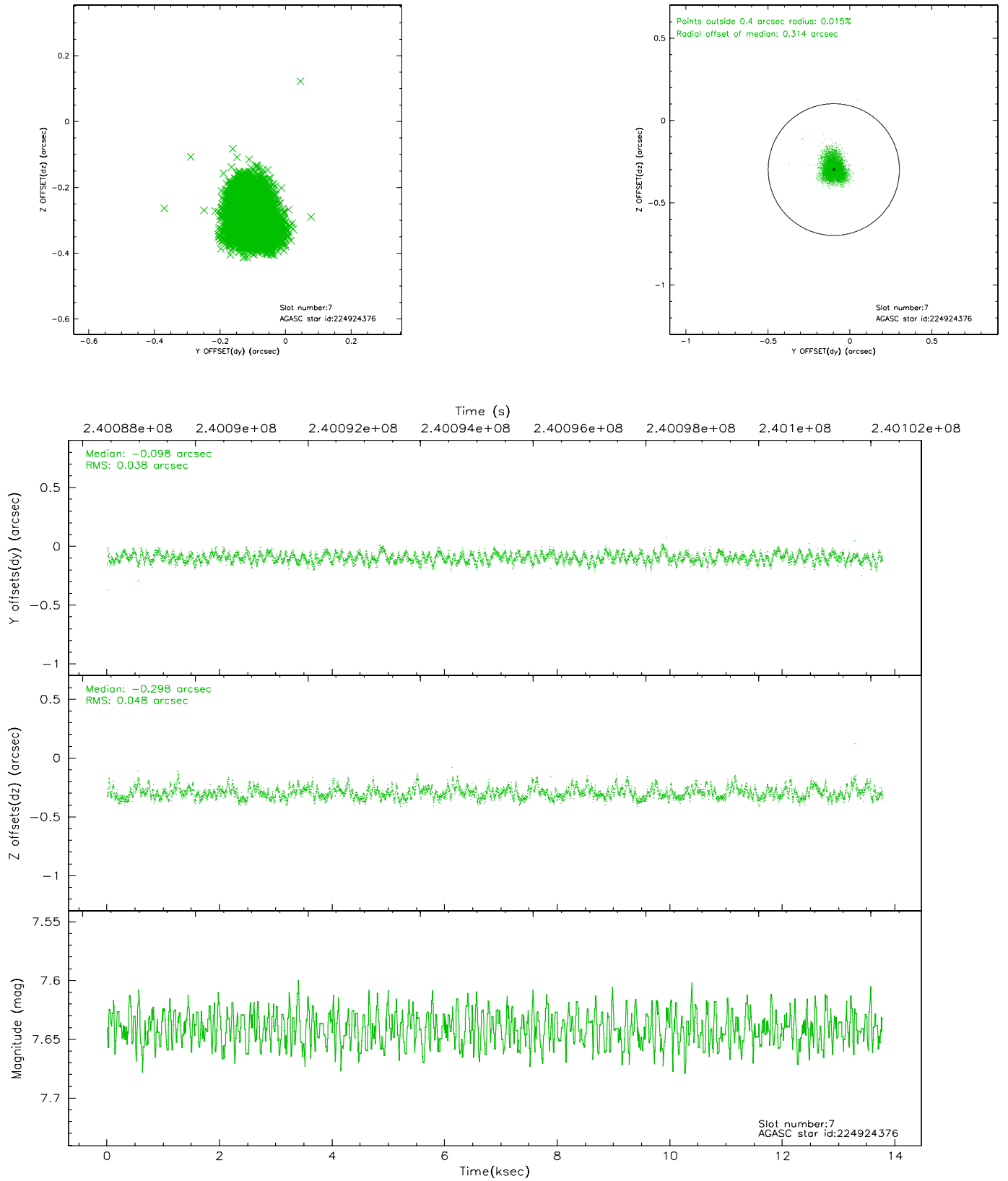
2.4.3 Slot 5



2.4.4 Slot 6

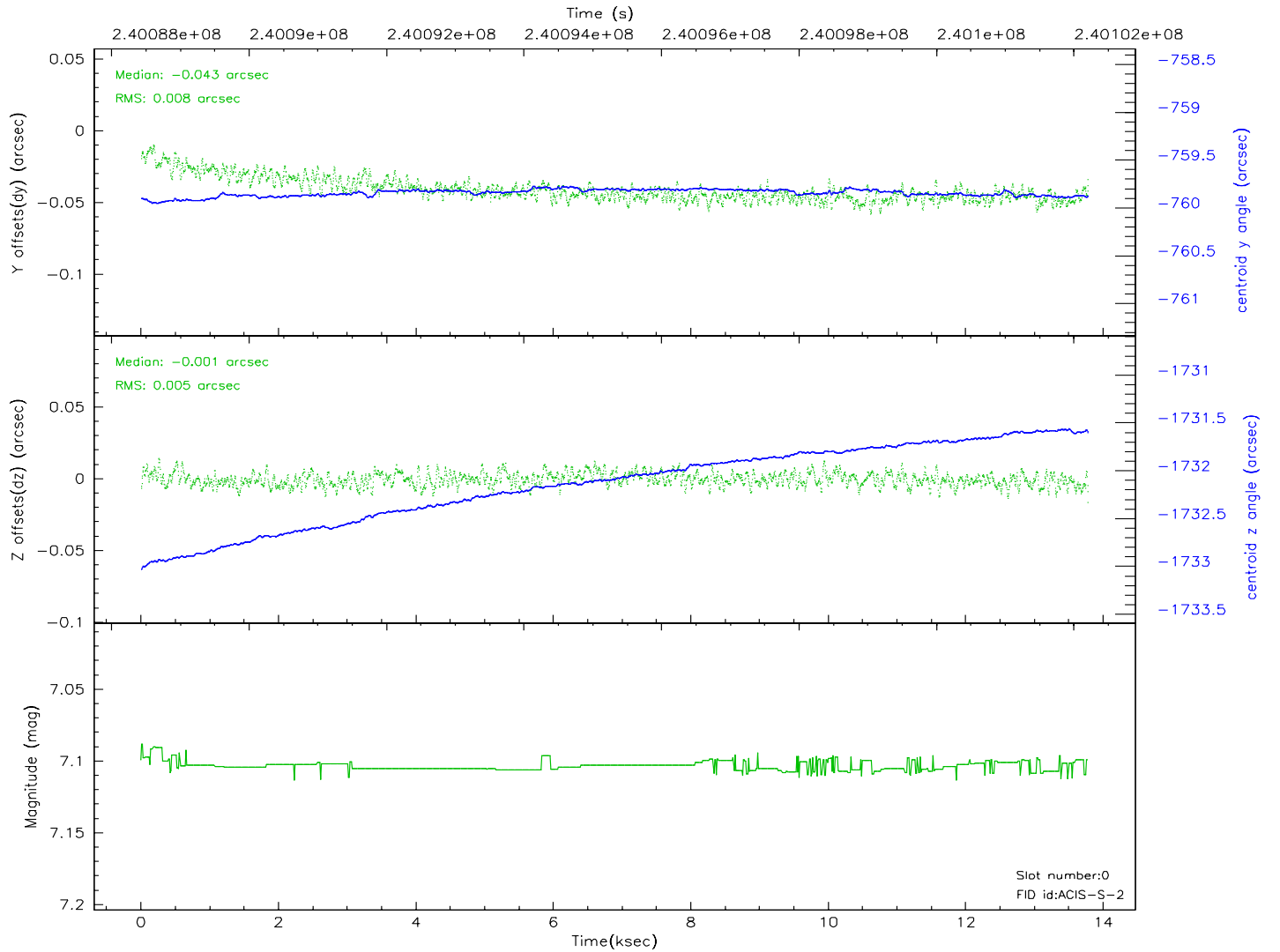
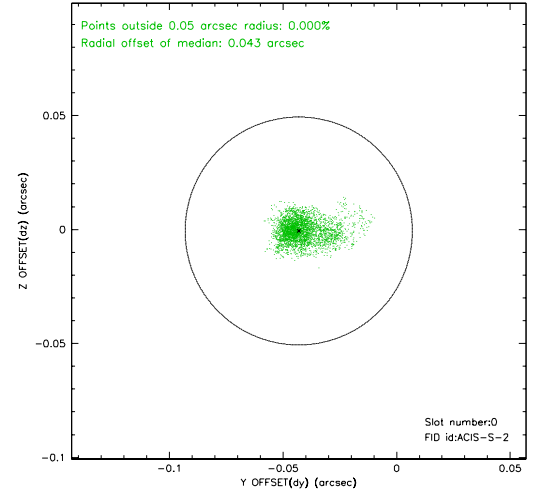
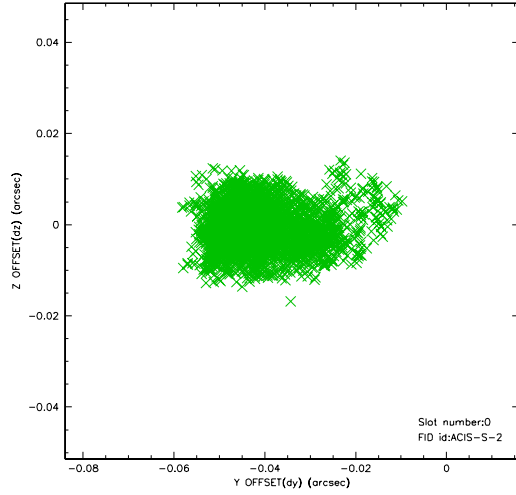


2.4.5 Slot 7

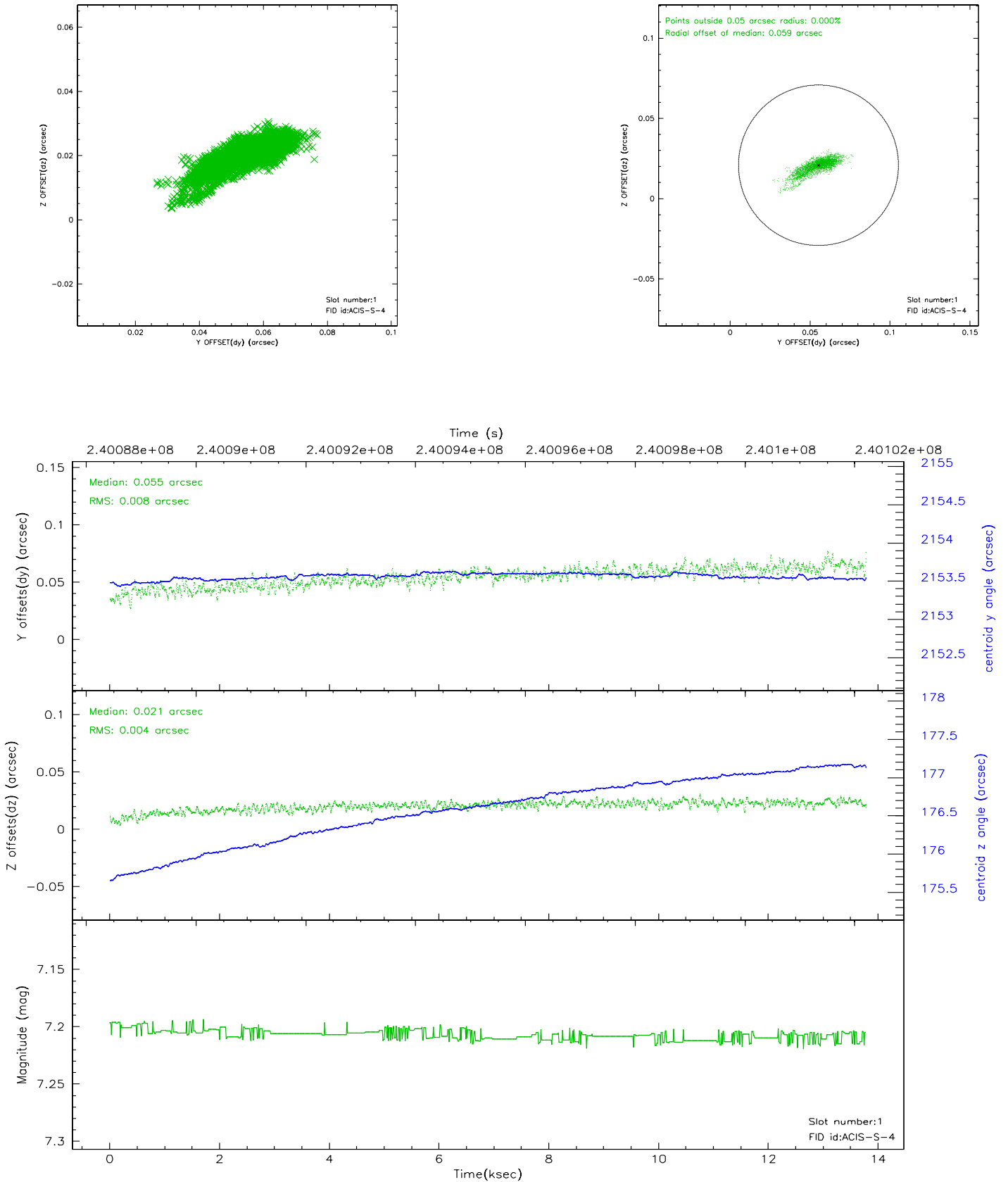


2.5 FID Slots

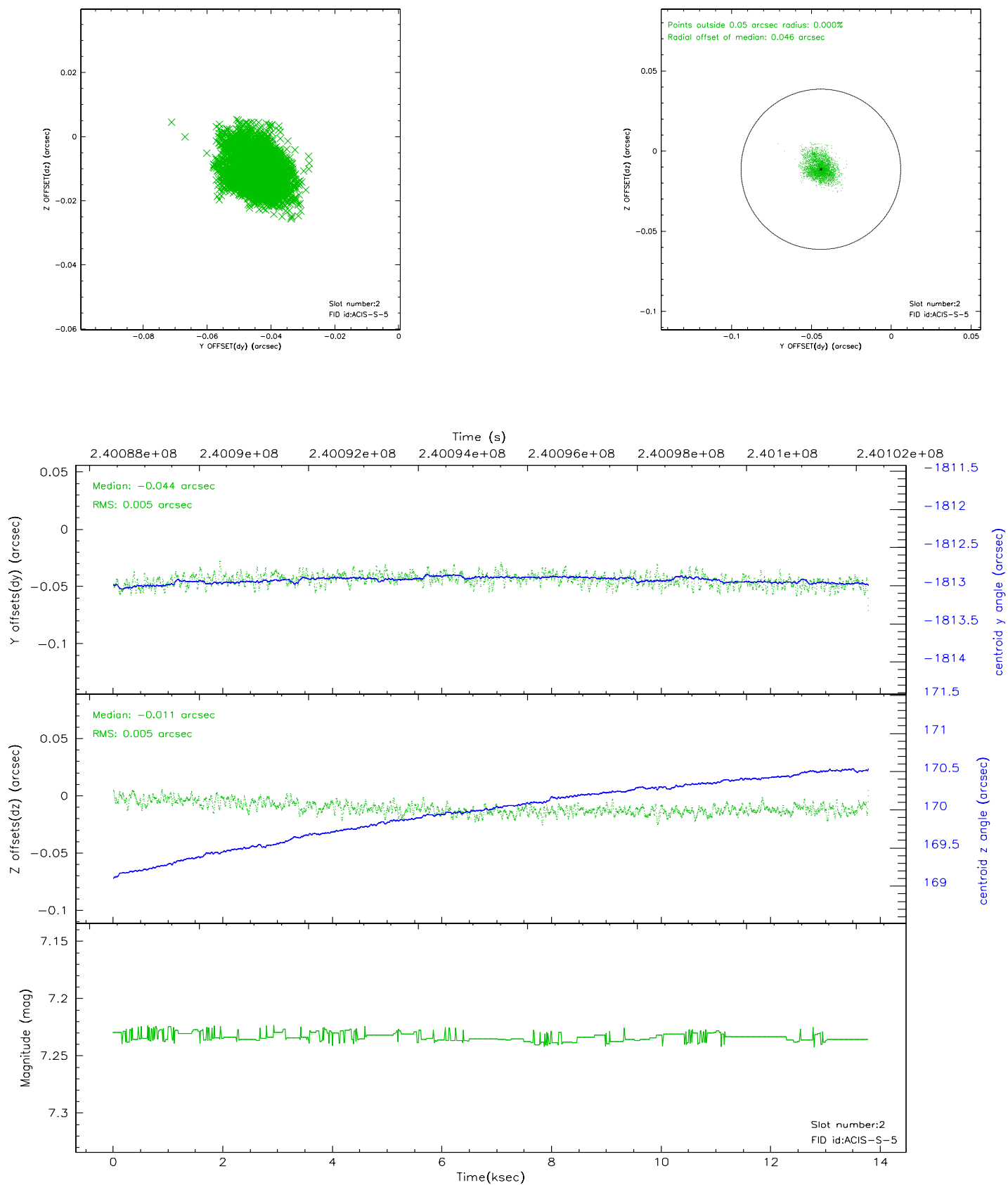
2.5.1 Slot 0



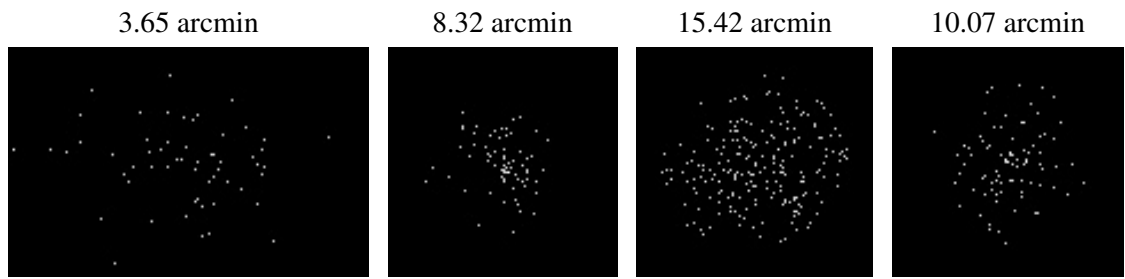
2.5.2 Slot 1



2.5.3 Slot 2



3 Point Sources



A Summary

A.1 Status

V&V Scientist	Jen Lauer
V&V Date (YYYY-MM-DD)	2006.03.20
V&V Edition	1
V&V Disposition and Status	OK
V&V Charge Time	13.77639

A.2 Comments