

V&V Reference Report

L2 ASCDS Version : 7.6.7.1

Observation 6131 - L2 Version 002
Chandra X-Ray Center

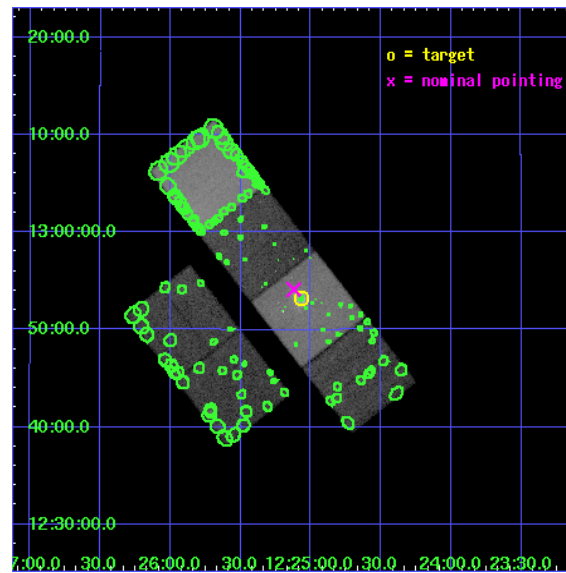
L2 Processing Date : Apr 4 2006

Contents

1	Front	2
2	OBI	3
2.1	OBI	3
2.1.1	Images	3
2.1.2	Bias	3
2.1.3	Parameters	4
2.1.4	Events	4
2.2	Compared Parameters	5
2.3	Aspect	6
2.4	Star Slots	9
2.4.1	Slot 3	9
2.4.2	Slot 4	10
2.4.3	Slot 5	11
2.4.4	Slot 6	12
2.4.5	Slot 7	13
2.5	FID Slots	14
2.5.1	Slot 0	14
2.5.2	Slot 1	15
2.5.3	Slot 2	16
3	Point Sources	17
A	Summary	18
A.1	Status	18
A.2	Comments	18

1 Front

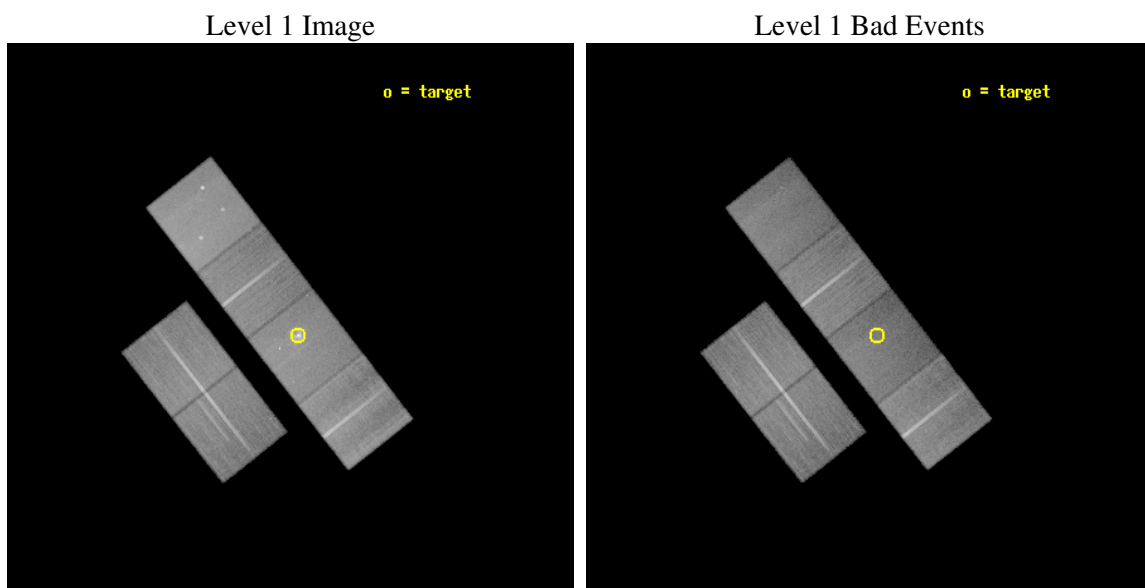
seq_num	600427
obs_id	6131
title	The Exploding Galaxies M84 and M89
observer	Dr. Christine Jones
object	M84
dtcycle	0
cycle	P
ra_targ	186.265833
dec_targ	12.886944
ra_nom	186.28027812094
dec_nom	12.902158030837
roll_nom	51.956634724659
revision	2
ontime	41452.799845576
livetime	40927.899534052
ontime2	41452.799845576
ontime3	41446.317924947
ontime5	41452.799845576
ontime6	41452.799845576
ontime7	41452.799845576
ontime8	41449.558885276
l2events	485880



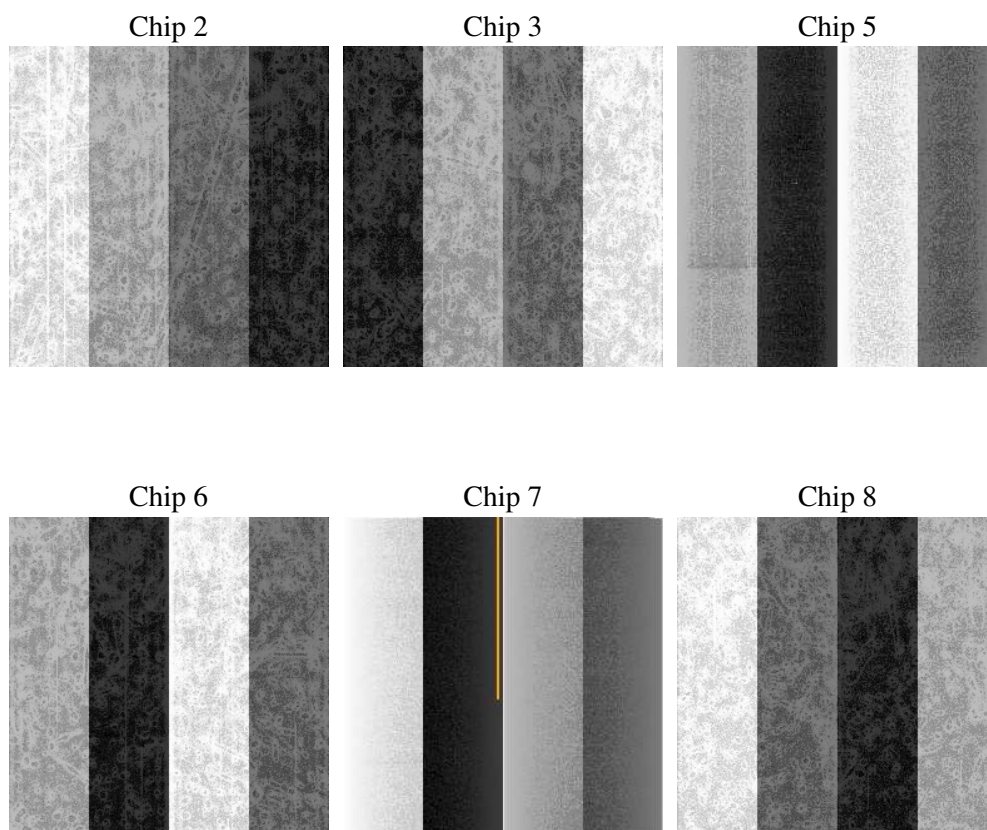
2 OBI

2.1 OBI

2.1.1 Images



2.1.2 Bias



2.1.3 Parameters

obi_num	0
ascdsver	7.6.7.1
caldsver	3.2.1
date	2006-04-04T21:03:12
revision	2

sched_exp_time	41500.000000
ontime	41458.873713255
ontime2	41458.873683333
ontime3	41452.391762704
ontime5	41458.873683333
ontime6	41458.873683333
ontime7	41458.873713255
ontime8	41458.873743117
l1events	1940894

2.1.4 Events

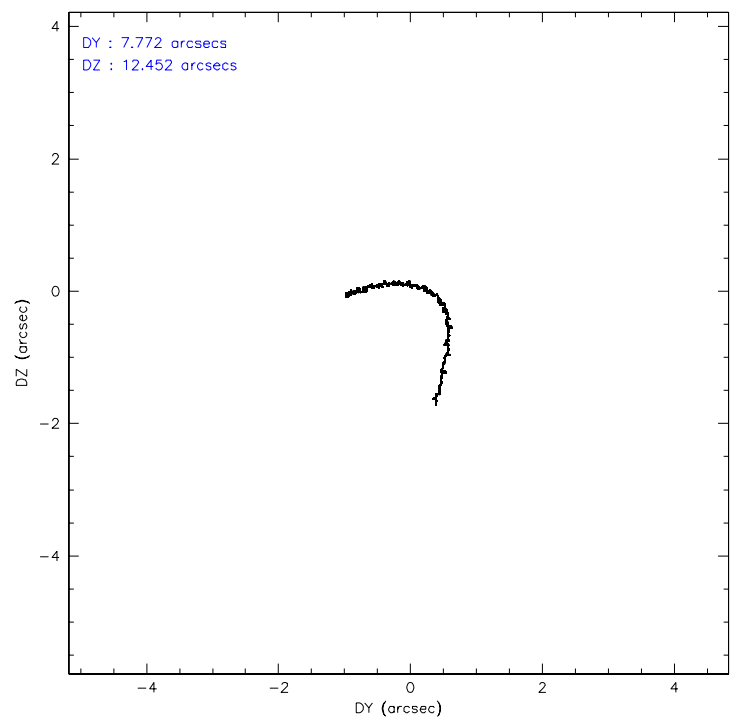
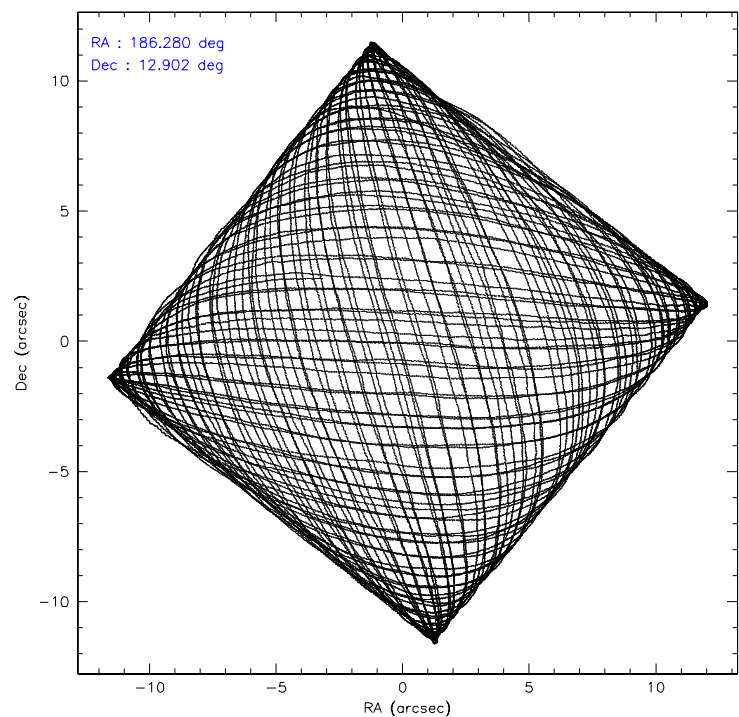
	ccd 2	ccd 3	ccd 5	ccd 6	ccd 7	ccd 8
level 1 events	307302	272133	395224	289250	335513	341472
rejected events	267634	239795	192031	245169	176459	258364
rejected %	87%	88%	48%	84%	52%	75%

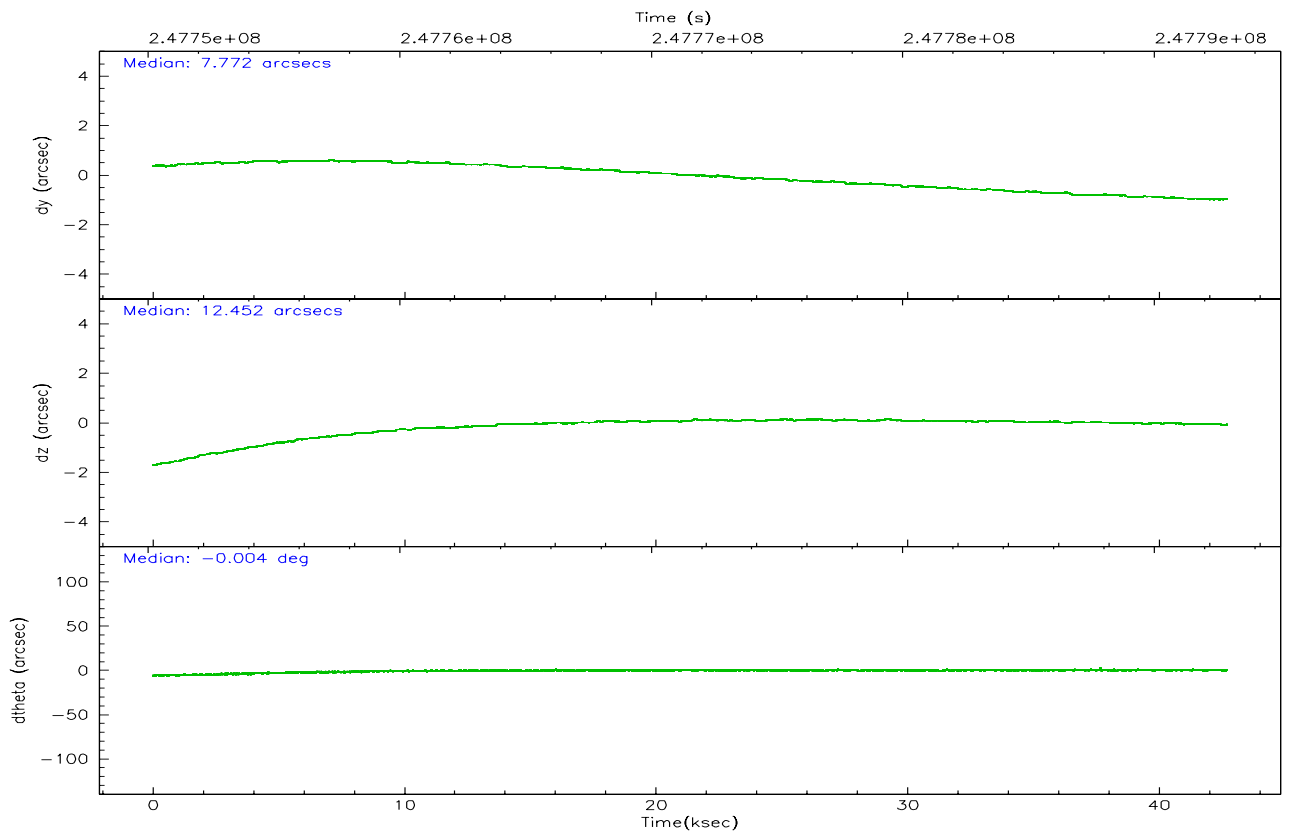
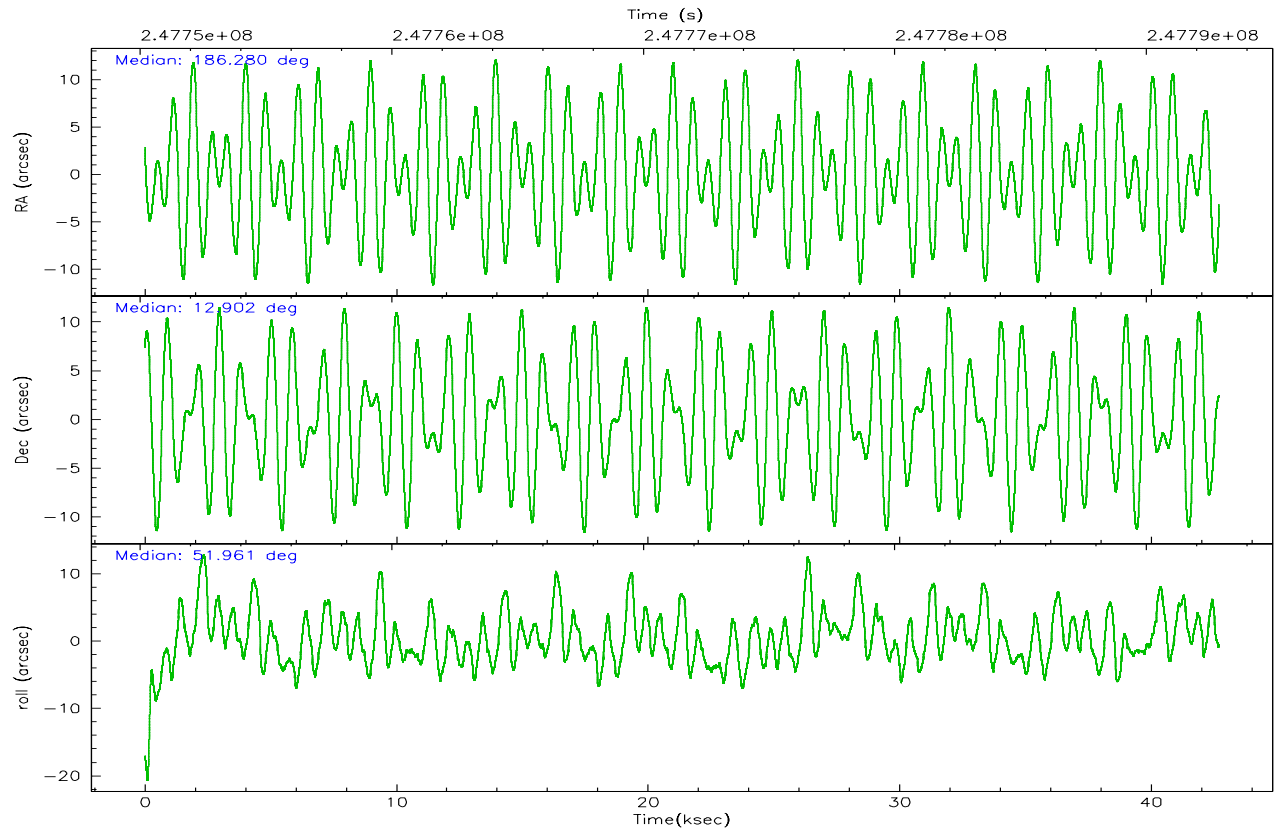
	ccd 2	ccd 3	ccd 5	ccd 6	ccd 7	ccd 8
grade 0 events	20765	14965	20927	23828	17455	27009
	6%	5%	5%	8%	5%	7%
grade 1 events	197	170	330	174	144	266
	0%	0%	0%	0%	0%	0%
grade 2 events	7521	6033	64975	7407	40529	18419
	2%	2%	16%	2%	12%	5%
grade 3 events	3279	3137	6803	3411	10789	8705
	1%	1%	1%	1%	3%	2%
grade 4 events	3252	3072	6546	3341	10539	8060
	1%	1%	1%	1%	3%	2%
grade 5 events	8913	10737	20401	10944	23194	15474
	2%	3%	5%	3%	6%	4%
grade 6 events	4854	5136	103974	6099	79759	20928
	1%	1%	26%	2%	23%	6%
grade 7 events	258521	228883	171268	234046	153104	242611
	84%	84%	43%	80%	45%	71%

2.2 Compared Parameters

Parameter	Planned	Actual	Parameter	Planned	Actual
Instrument	ACIS	ACIS	Obspar format version number	6	6
Detector	ACIS-235678	ACIS-235678	Obspar file type	PREDICTED	ACTUAL
Grating	NONE	NONE	Obspar update status	NONE	UPDATED
Data mode	VFAINT	VFAINT	On-chip summing requested	N	N
Observation mode	POINTING	POINTING	Subarray requested	NONE	NONE
Pointing RA	186.276775	186.2802781209371	Alternating exposures requested	N	N
Pointing Dec	12.875164	12.90215803083658	Primary exposure time	0.000000	3.2
Pointing Roll	51.800785	51.9566347246594			
SIM focus pos (mm)	-0.684267	-0.6828225247311905			
SIM defocus (mm)	0	0.001444936568705701			
SIM translation stage pos (mm)	-190.132523	-190.1400660498719			
SIM translation stage offset (mm)	0	0.00754346686406393			
Observation start time	247751397.184000	247749922.57316			
Observation start date	2005-11-07T11:48:53	2005-11-07T11:25:22			
Observation end time	247792897.184000	247793921.21269			
Observation end date	2005-11-07T23:20:33	2005-11-07T23:38:41			
Read mode	TIMED	TIMED			

2.3 Aspect



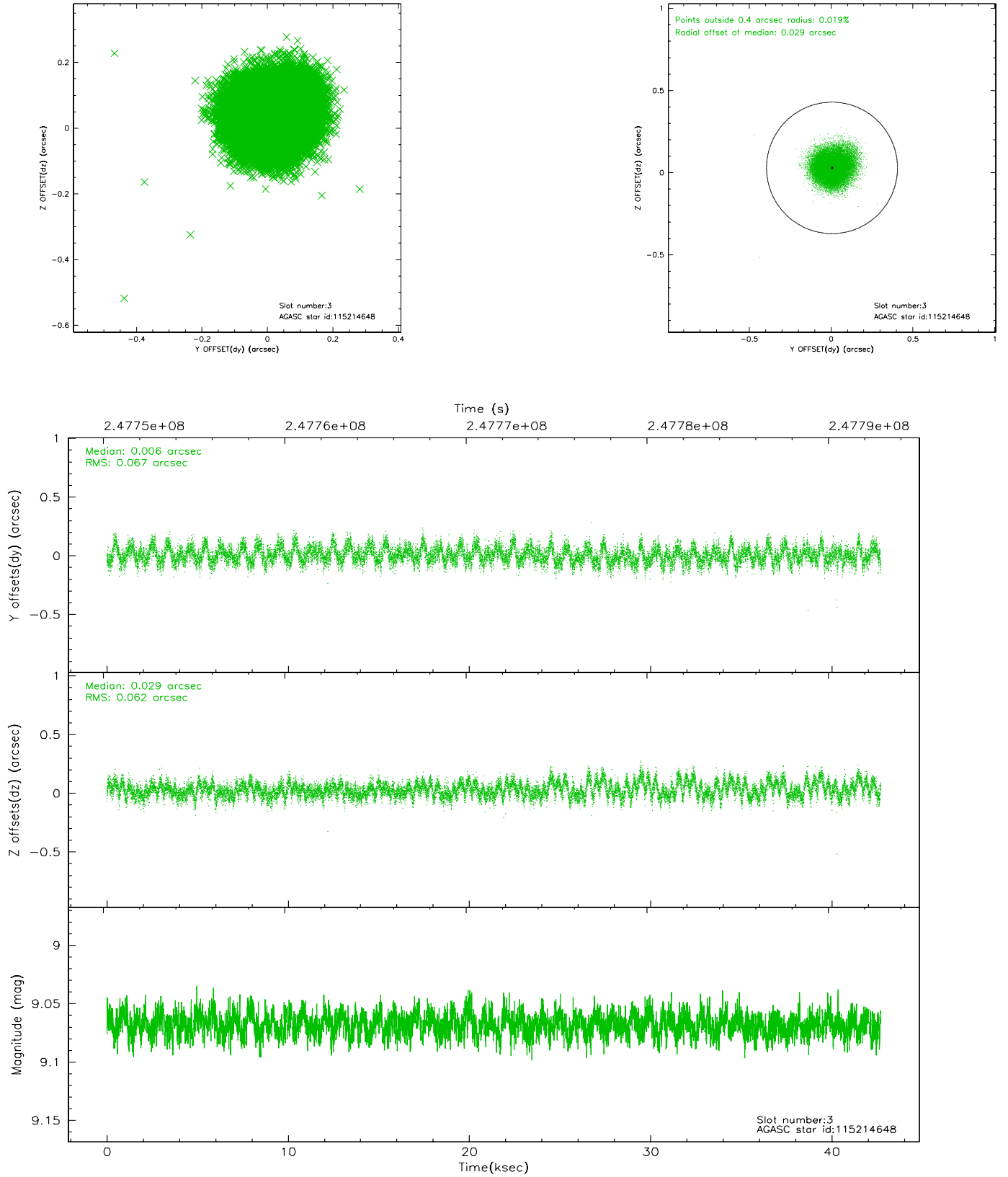


Slot Statistics

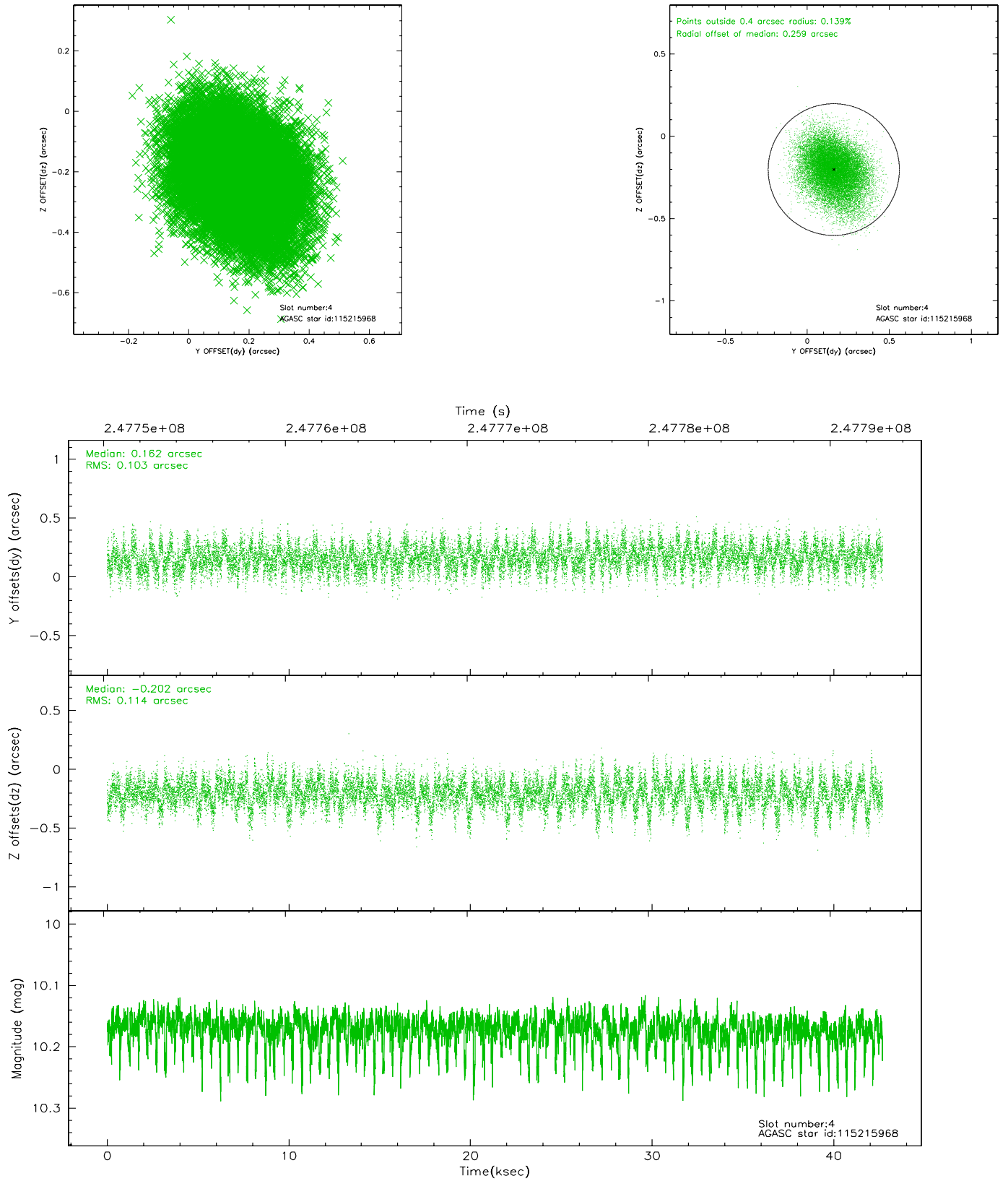
slot	status	id	mag	n_pts	med_dy	med_dz	dr1	dr2	ra	dec	mean_y	mean_z
0	FID	ACIS-S-2	7.10	10417	-0.002	-0.010	0.012	0.026	0.000000	0.000000	-760.49	-1733.58
1	FID	ACIS-S-4	7.20	10417	0.041	0.004	0.019	0.041	0.000000	0.000000	2152.84	174.91
2	FID	ACIS-S-5	7.23	10417	-0.074	0.016	0.023	0.032	0.000000	0.000000	-1813.39	168.60
3	GUIDE	115214648	9.07	20821	0.006	0.029	0.098	0.154	185.771147	12.685188	-1634.02	974.04
4	GUIDE	115215968	10.17	20807	0.162	-0.202	0.163	0.267	186.327588	13.159527	914.96	493.00
5	GUIDE	115216184	9.65	20818	0.170	-0.140	0.106	0.170	185.973150	12.580247	-1493.81	181.55
6	GUIDE	115347480	9.60	20803	-0.196	0.122	0.122	0.193	186.668576	13.310410	2080.90	-108.96
7	GUIDE	115349744	10.31	20266	-0.147	0.206	0.241	0.398	186.878186	12.752529	960.99	-1930.94

2.4 Star Slots

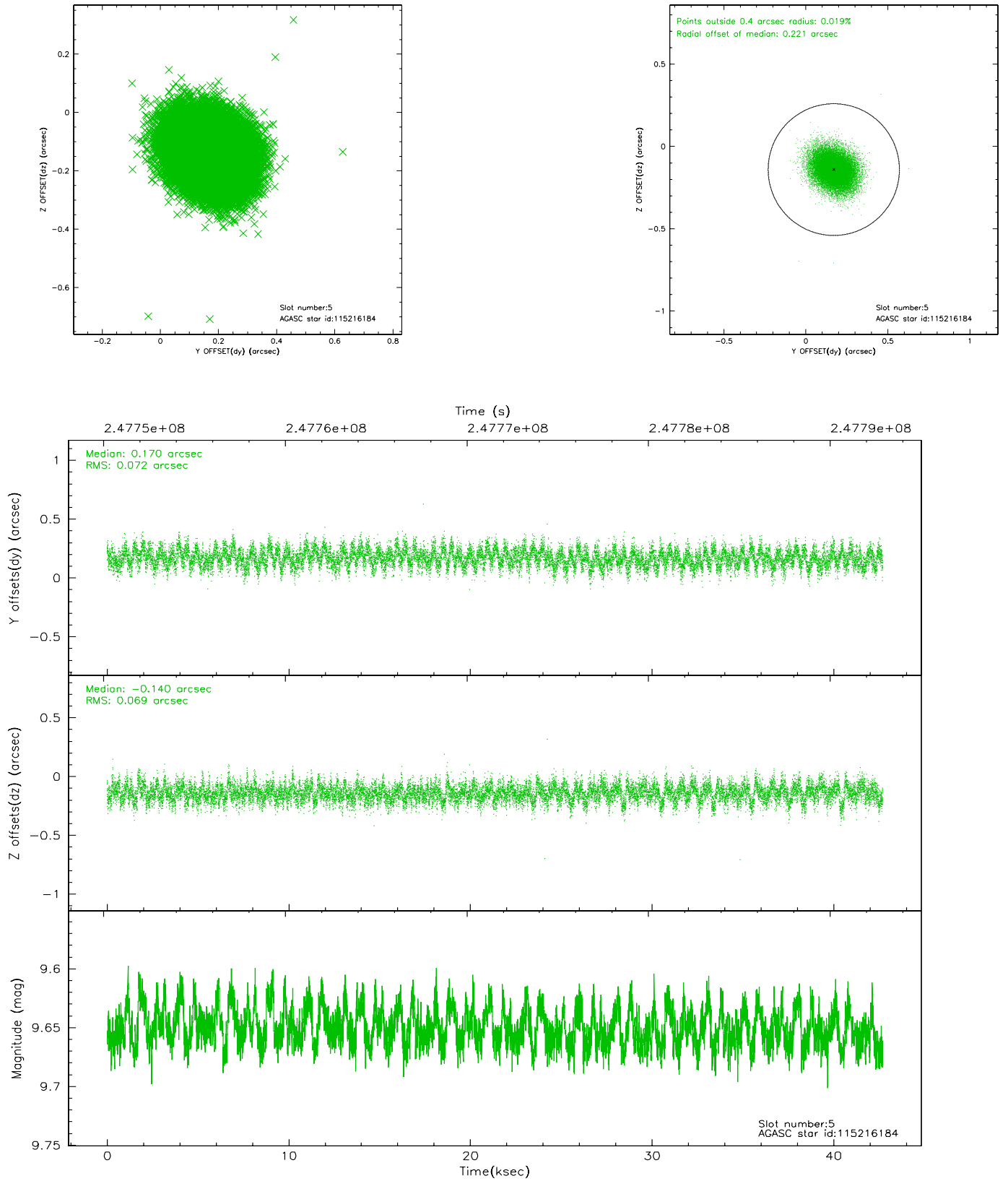
2.4.1 Slot 3



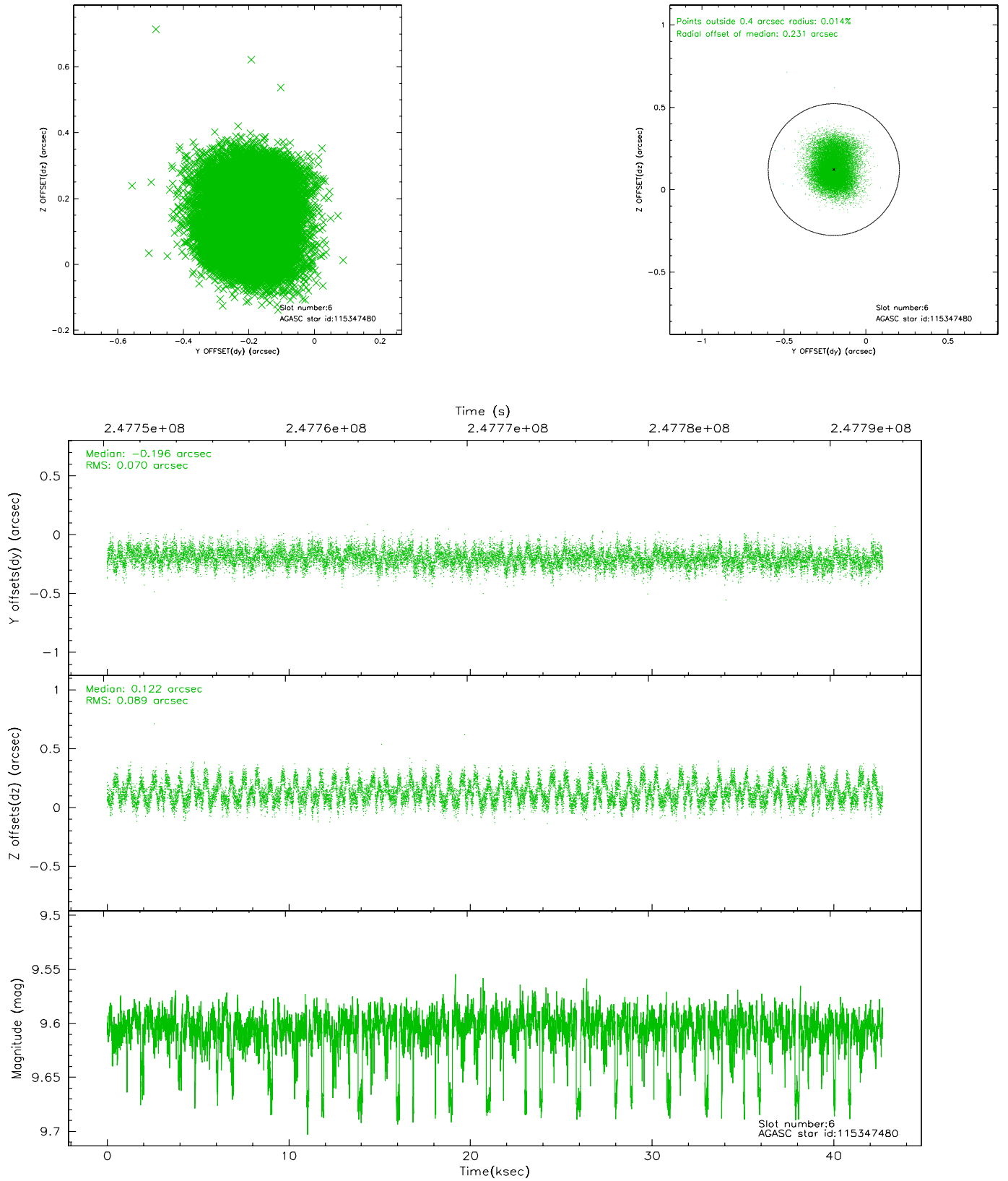
2.4.2 Slot 4



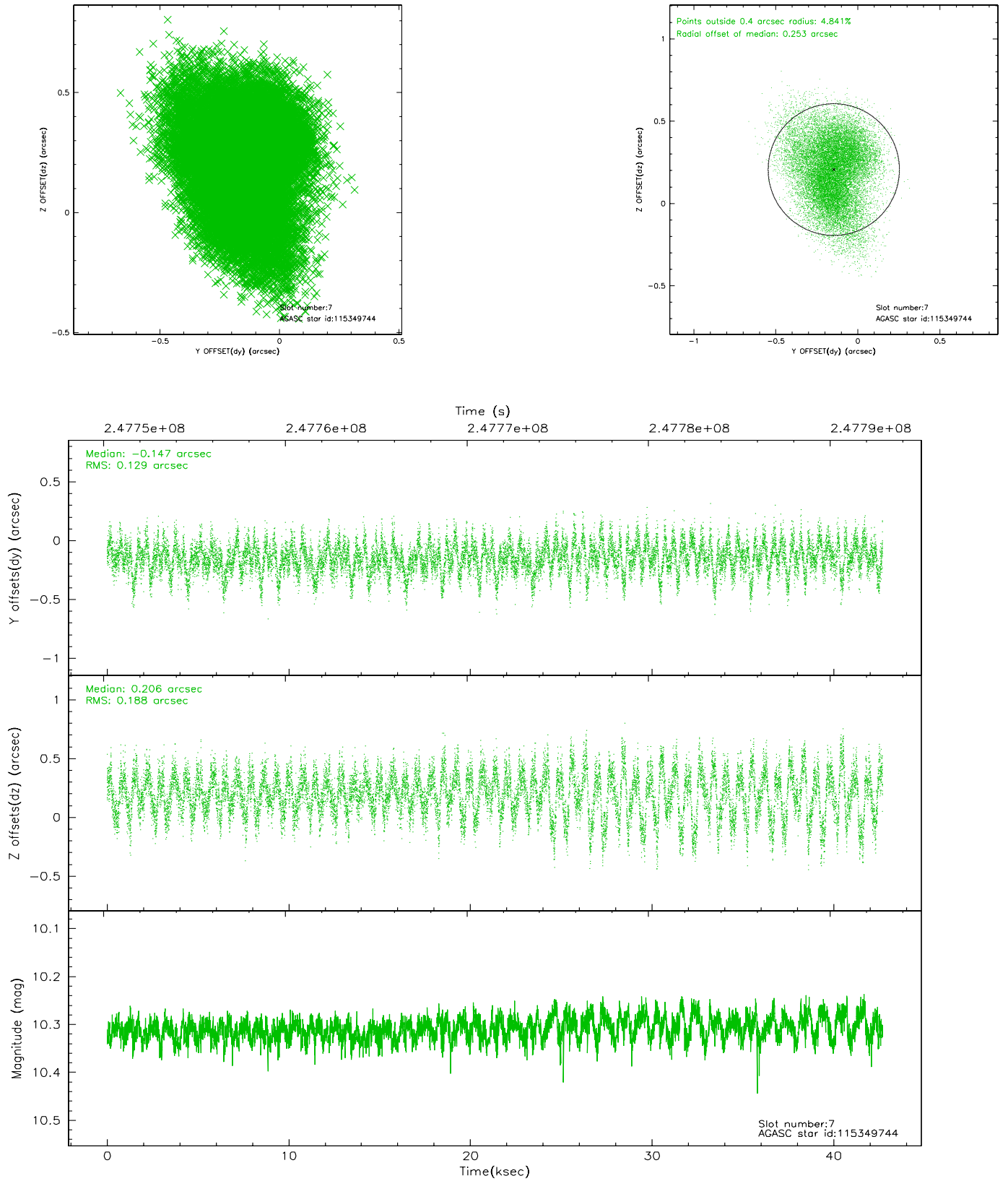
2.4.3 Slot 5



2.4.4 Slot 6

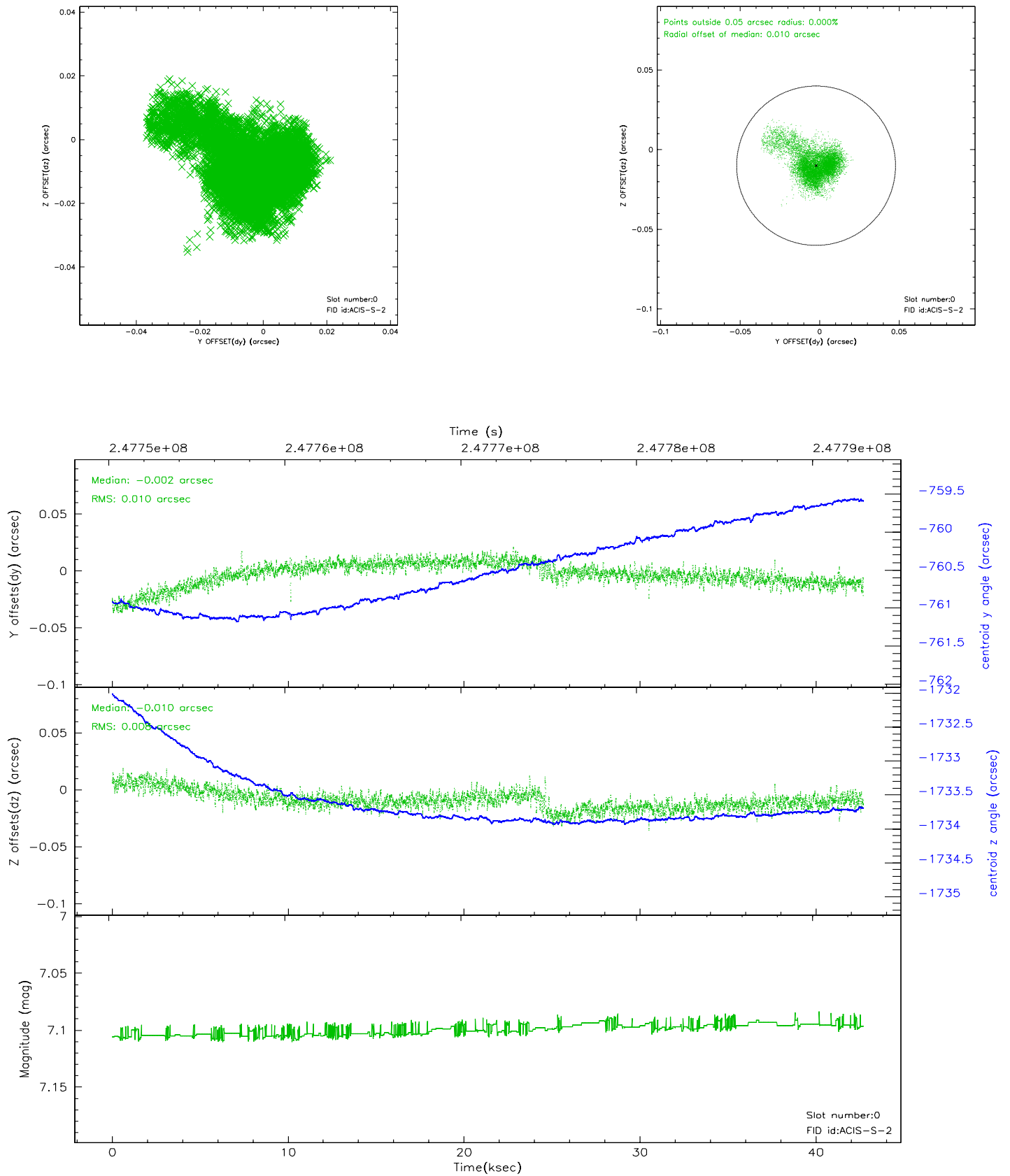


2.4.5 Slot 7

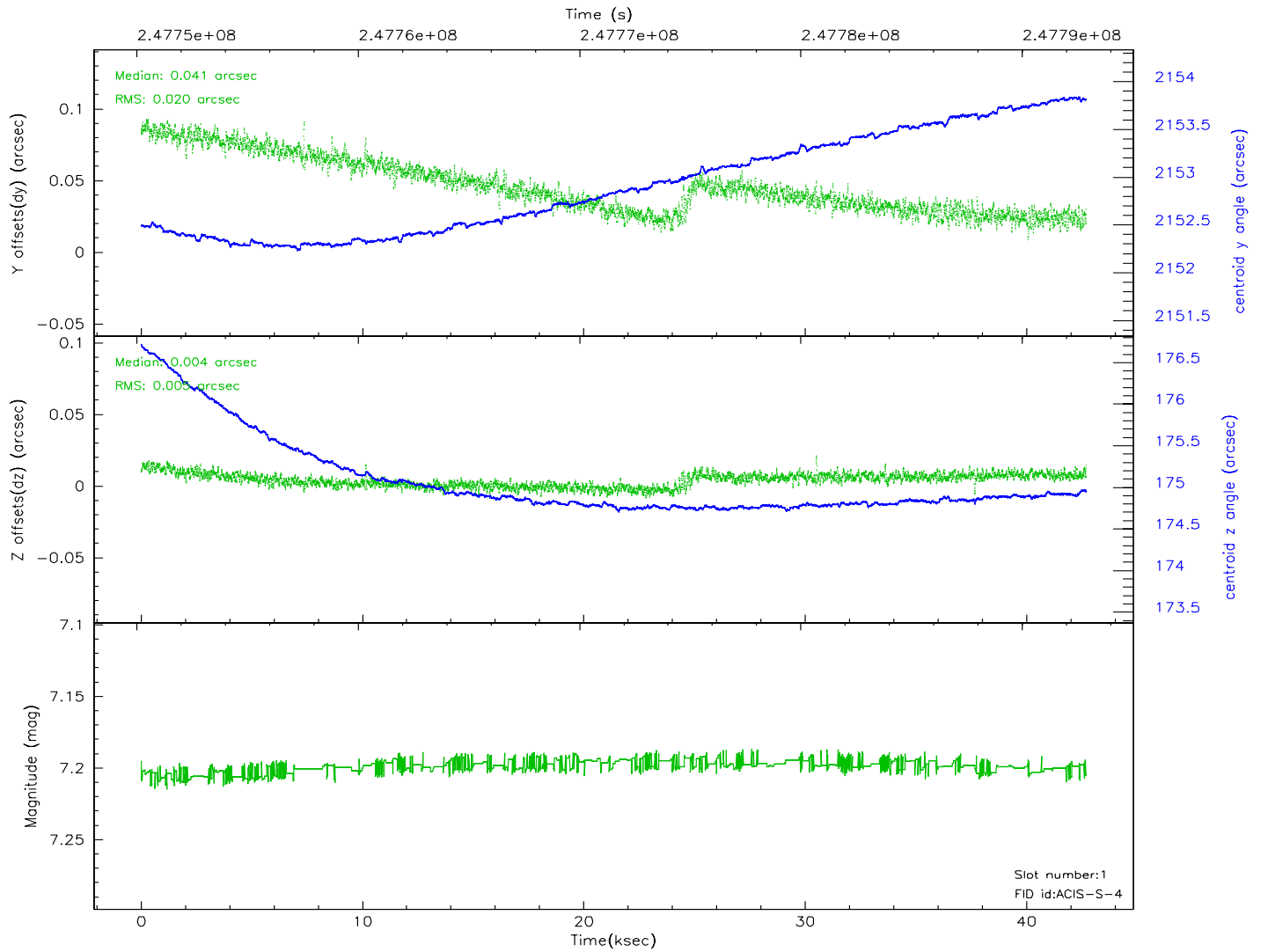
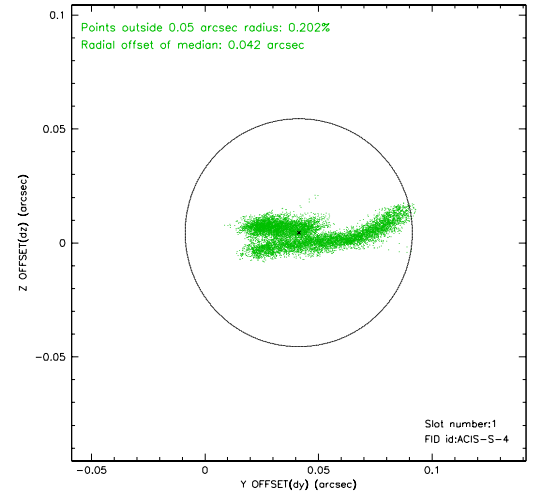
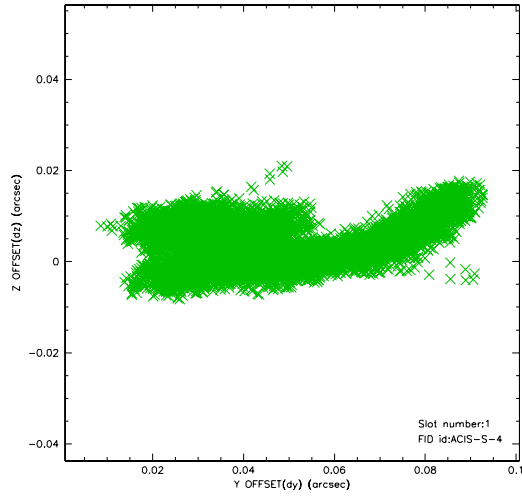


2.5 FID Slots

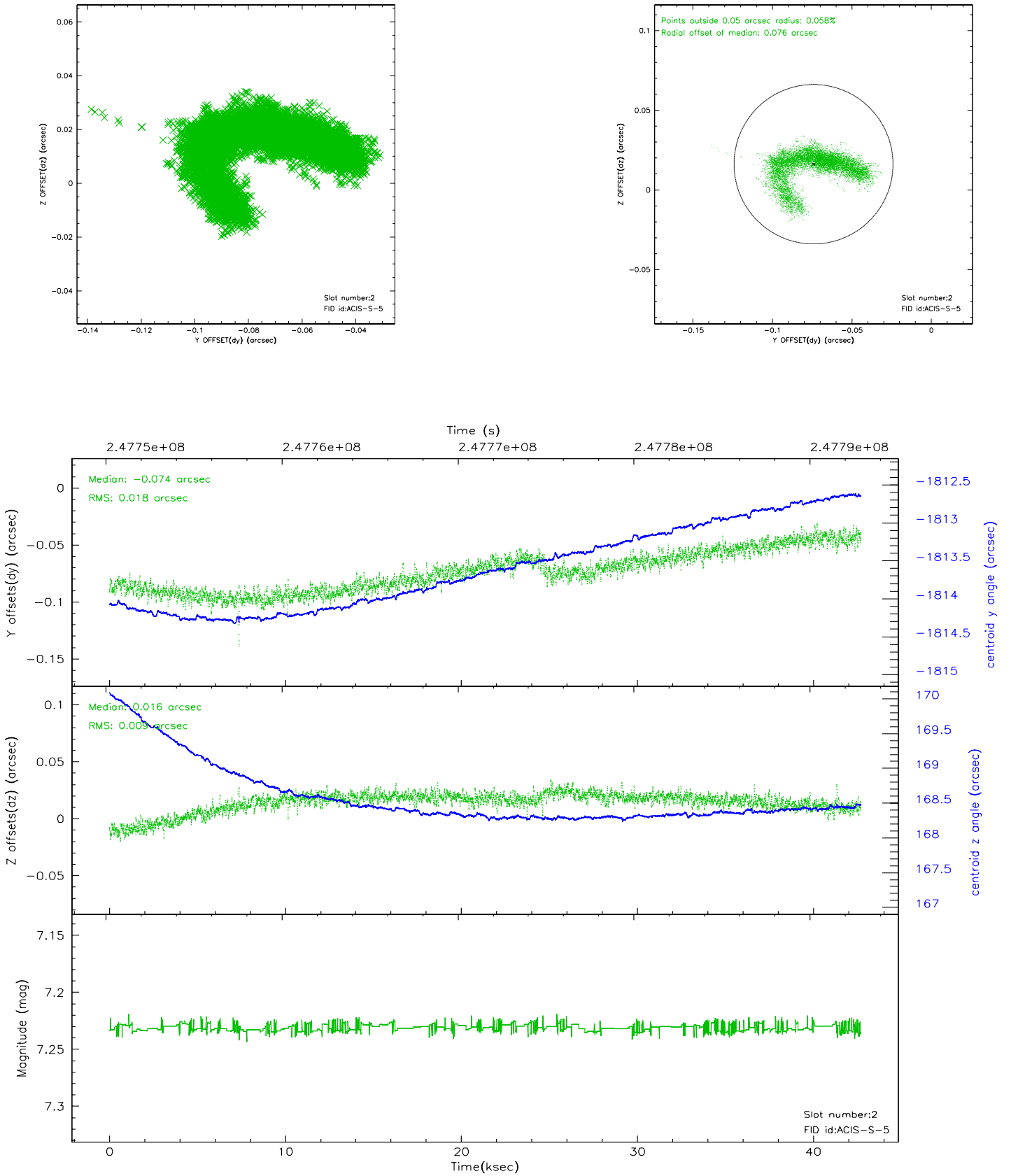
2.5.1 Slot 0



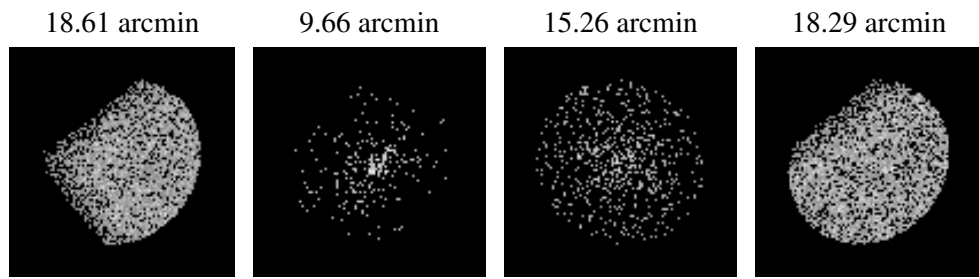
2.5.2 Slot 1



2.5.3 Slot 2



3 Point Sources



A Summary

A.1 Status

V&V Scientist	Jen Lauer
V&V Date (YYYY-MM-DD)	2006.04.05
V&V Edition	1
V&V Disposition and Status	OK
V&V Charge Time	41.45279

A.2 Comments

Monitor constraint met.