

V&V Reference Report

L2 ASCDS Version : 7.6.7.1

Observation 5944 - L2 Version 002
Chandra X-Ray Center

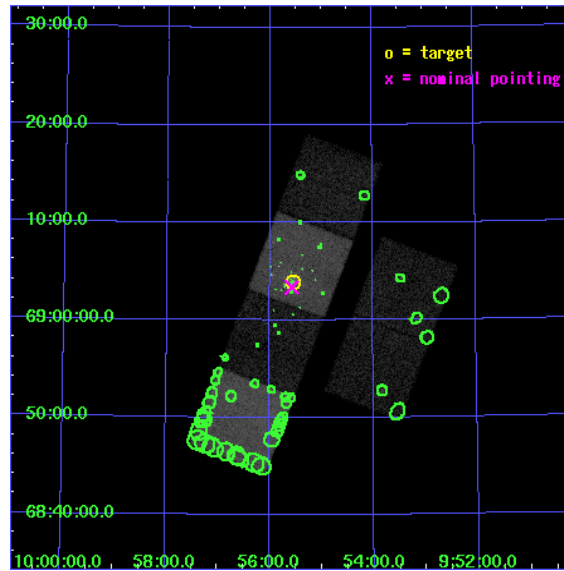
L2 Processing Date : Mar 10 2006

Contents

1	Front	2
2	OBI	3
2.1	OBI	3
2.1.1	Images	3
2.1.2	Bias	3
2.1.3	Parameters	4
2.1.4	Events	4
2.2	Compared Parameters	5
2.3	Aspect	6
2.4	Star Slots	9
2.4.1	Slot 3	9
2.4.2	Slot 4	10
2.4.3	Slot 5	11
2.4.4	Slot 6	12
2.4.5	Slot 7	13
2.5	FID Slots	14
2.5.1	Slot 0	14
2.5.2	Slot 1	15
2.5.3	Slot 2	16
3	Point Sources	17
A	Summary	18
A.1	Status	18
A.2	Comments	18

1 Front

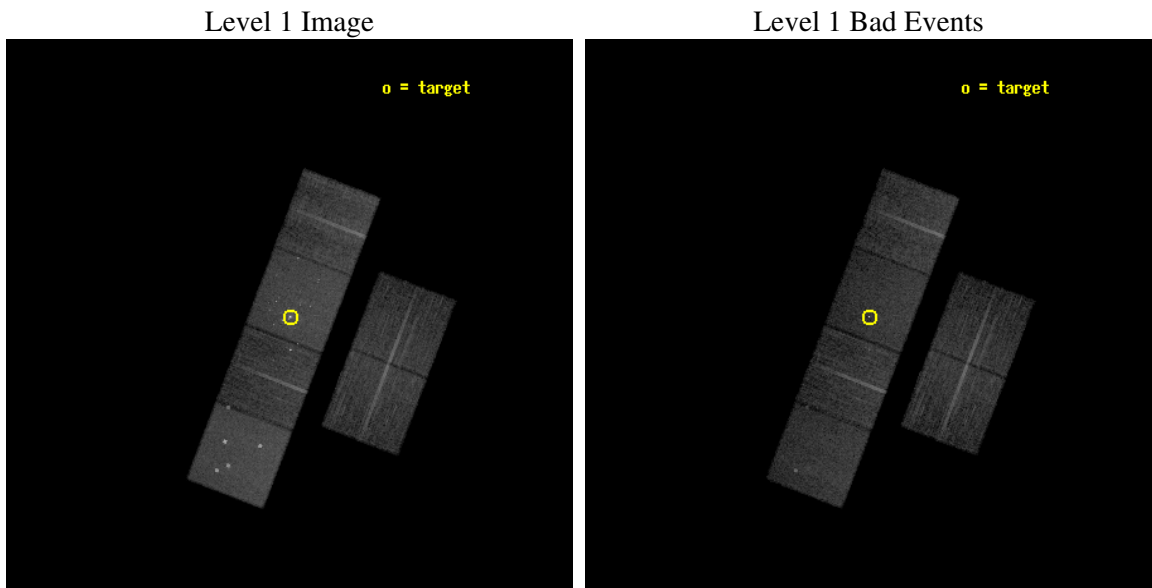
seq_num	600463
obs_id	5944
title	An Unprecedented View of a Galaxy's Dynamic X-ray Source Population
observer	Dr. David Pooley
object	M81
dtcycle	0
cycle	P
ra_targ	148.888333
dec_targ	69.065306
ra_nom	148.8933966943
dec_nom	69.055798580759
roll_nom	290.96355123406
revision	2
ontime	11958.399955451
livetime	11806.975494732
ontime2	11955.158995152
ontime3	11958.399955451
ontime5	11958.399955451
ontime6	11958.399955451
ontime7	11958.399955451
ontime8	11958.399955451
l2events	152266



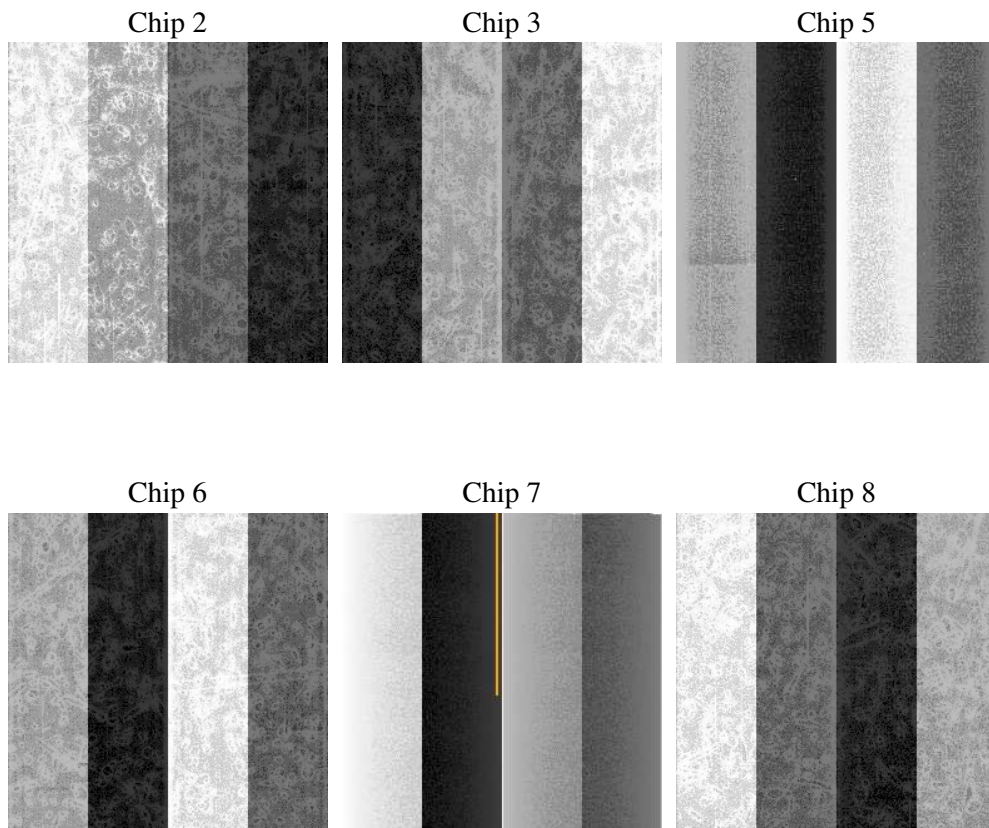
2 OBI

2.1 OBI

2.1.1 Images



2.1.2 Bias



2.1.3 Parameters

obi_num	0
ascdsver	7.6.7.1
caldbver	3.2.1
date	2006-03-10T17:32:58
revision	2

sched_exp_time	12000.000000
ontime	11965.774546653
ontime2	11962.533586353
ontime3	11965.774546653
ontime5	11965.774546653
ontime6	11965.774546653
ontime7	11965.774546653
ontime8	11965.774546653
l1events	669945

2.1.4 Events

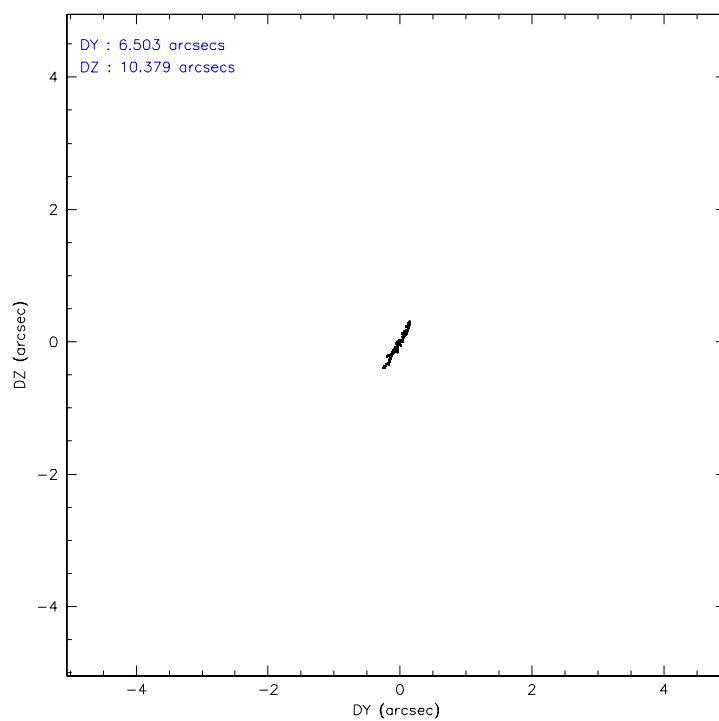
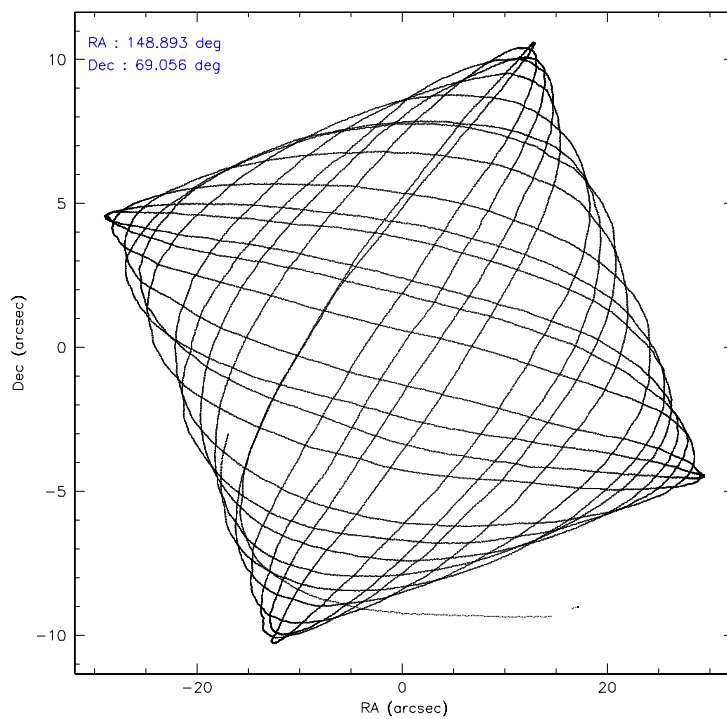
	ccd 2	ccd 3	ccd 5	ccd 6	ccd 7	ccd 8
level 1 events	94471	85456	144196	94761	136691	114370
rejected events	83486	74887	77643	81914	80496	90018
rejected %	88%	87%	53%	86%	58%	78%

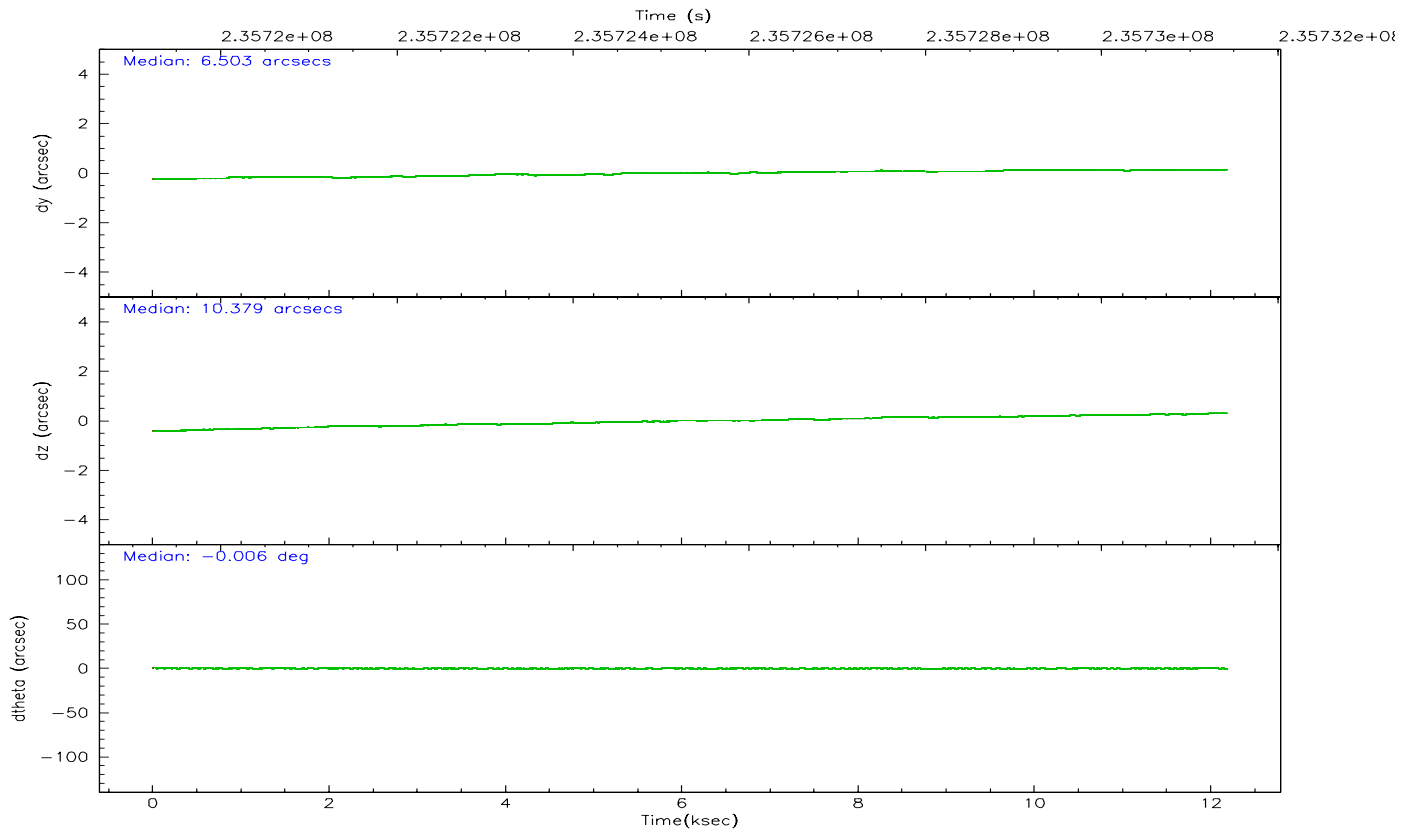
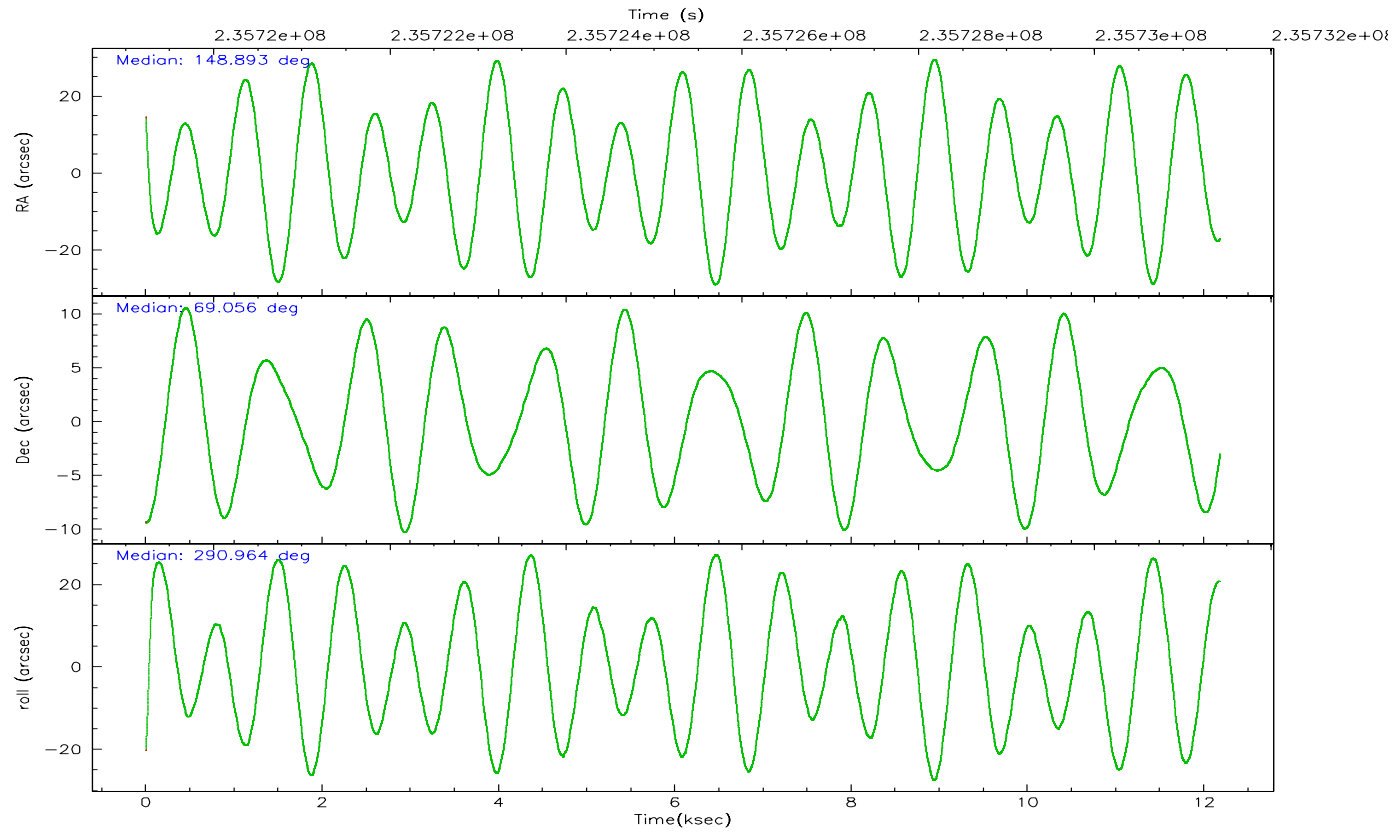
	ccd 2	ccd 3	ccd 5	ccd 6	ccd 7	ccd 8
grade 0 events	4869	4611	9575	5836	4684	7477
	5%	5%	6%	6%	3%	6%
grade 1 events	59	51	263	81	163	77
	0%	0%	0%	0%	0%	0%
grade 2 events	2212	2042	19921	2563	14238	5500
	2%	2%	13%	2%	10%	4%
grade 3 events	1061	1024	1234	1128	3231	2359
	1%	1%	0%	1%	2%	2%
grade 4 events	1058	995	1192	1094	3106	2286
	1%	1%	0%	1%	2%	1%
grade 5 events	3642	4126	6542	4297	8633	5520
	3%	4%	4%	4%	6%	4%
grade 6 events	1791	1901	34673	2234	30975	6739
	1%	2%	24%	2%	22%	5%
grade 7 events	79779	70706	70796	77528	71661	84412
	84%	82%	49%	81%	52%	73%

2.2 Compared Parameters

Parameter	Planned	Actual	Parameter	Planned	Actual
Instrument	ACIS	ACIS	Obspar format version number	6	6
Detector	ACIS-235678	ACIS-235678	Obspar file type	PREDICTED	ACTUAL
Grating	NONE	NONE	Obspar update status	NONE	UPDATED
Data mode	FAINT	FAINT	On-chip summing requested	N	N
Observation mode	POINTING	POINTING	Subarray requested	NONE	NONE
Pointing RA	148.833564	148.893396694298	Alternating exposures requested	N	N
Pointing Dec	69.072669	69.05579858075913	Primary exposure time	0.000000	3.2
Pointing Roll	290.862831	290.9635512340622			
SIM focus pos (mm)	-0.684267	-0.6828225247311905			
SIM defocus (mm)	0	0.001444936568705701			
SIM translation stage pos (mm)	-190.132523	-190.1400660498719			
SIM translation stage offset (mm)	0	0.00754346686406393			
Observation start time	235719421.184000	235718459.72086			
Observation start date	2005-06-21T05:35:57	2005-06-21T05:20:59			
Observation end time	235731421.184000	235732521.6965			
Observation end date	2005-06-21T08:55:57	2005-06-21T09:15:21			
Read mode	TIMED	TIMED			

2.3 Aspect



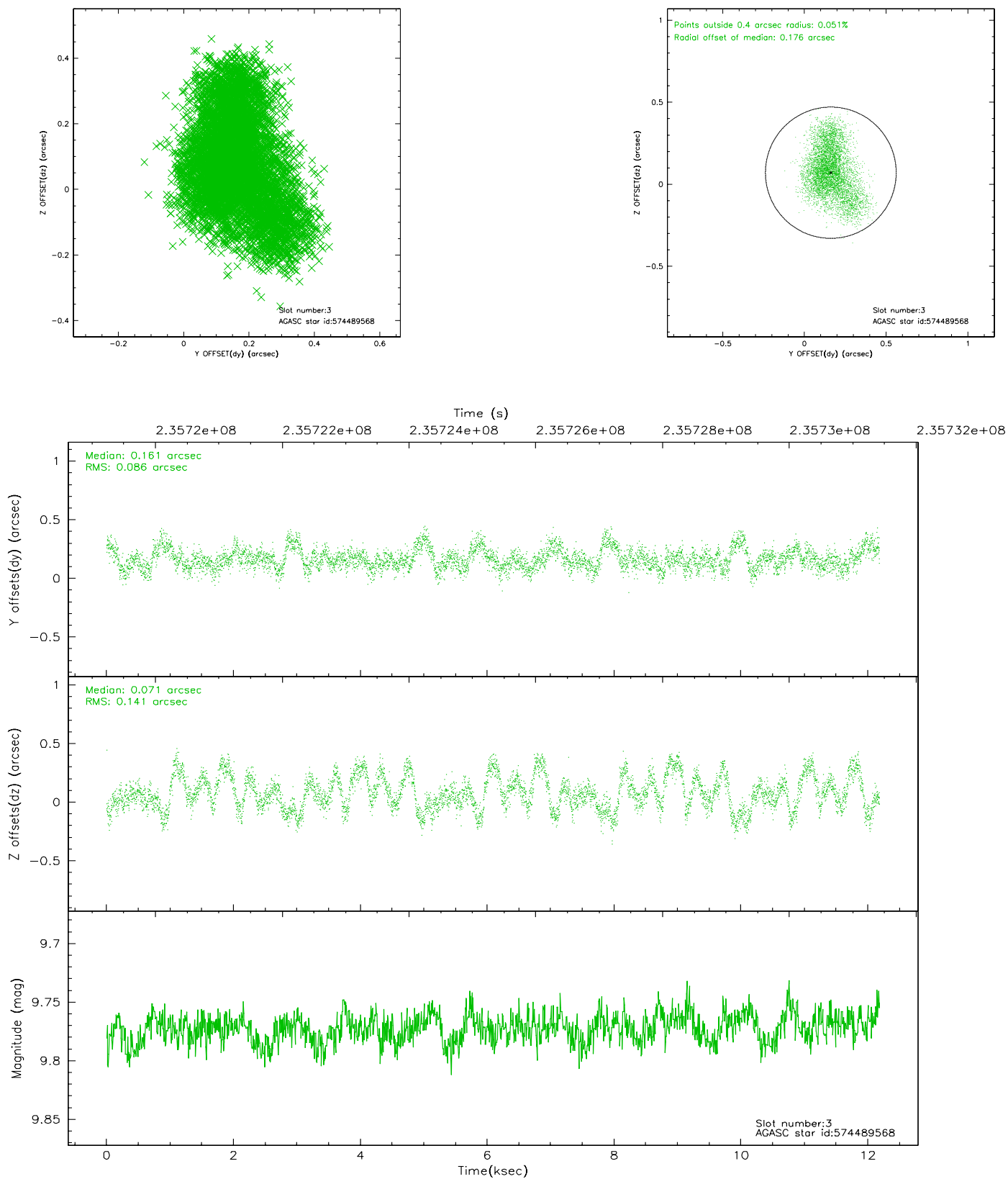


Slot Statistics

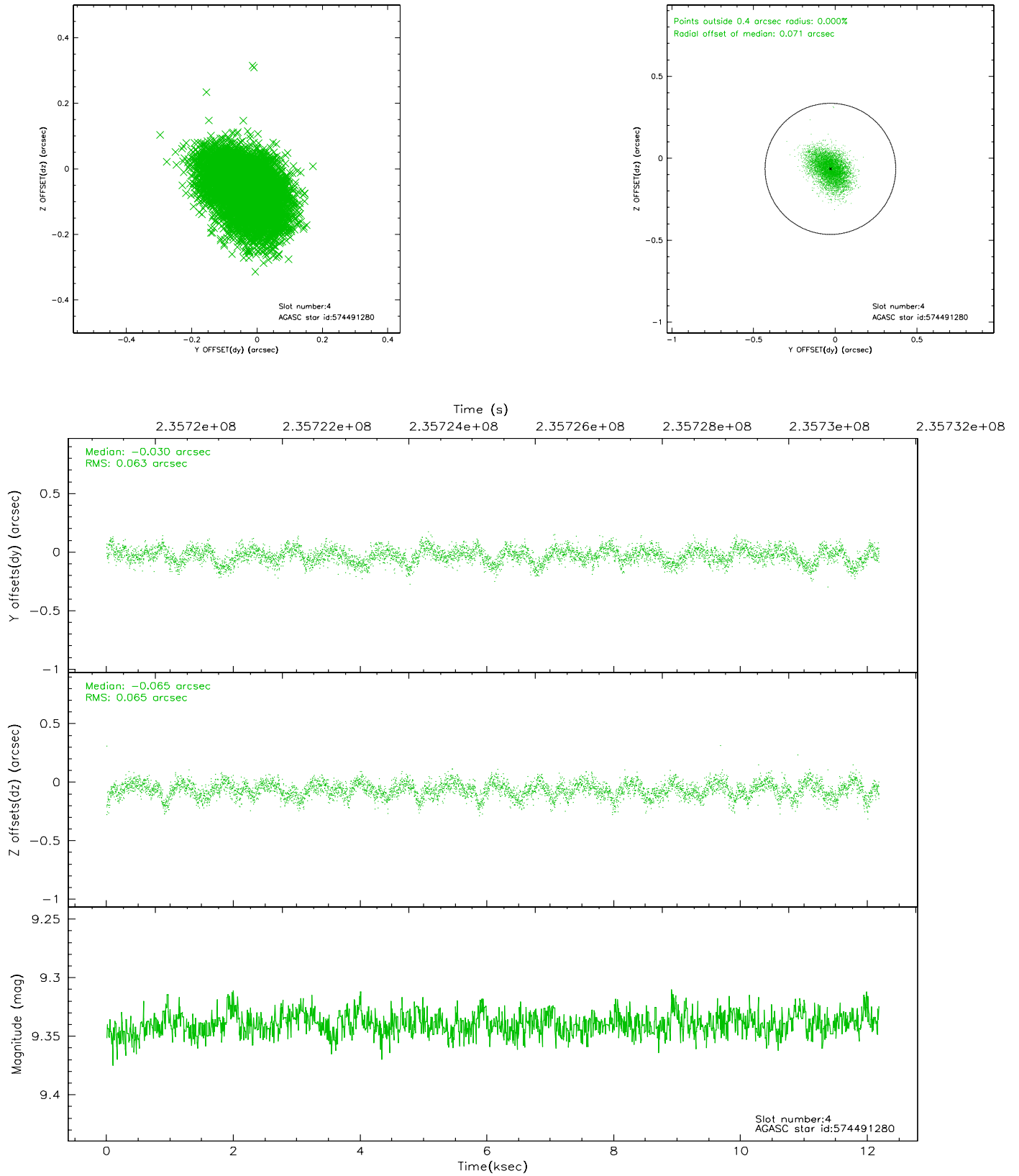
slot	status	id	mag	n_pts	med_dy	med_dz	dr1	dr2	ra	dec	mean_y	mean_z
0	FID	ACIS-S-1	7.19	2972	-0.020	-0.015	0.014	0.022	0.000000	0.000000	936.79	-1727.26
1	FID	ACIS-S-4	7.21	2972	0.027	0.024	0.010	0.016	0.000000	0.000000	2154.46	176.53
2	FID	ACIS-S-5	7.23	2972	-0.034	0.003	0.008	0.012	0.000000	0.000000	-1811.58	170.54
3	GUIDE	574489568	9.77	5937	0.161	0.071	0.177	0.289	147.223974	69.438157	-1978.78	-1423.05
4	GUIDE	574491280	9.34	5942	-0.030	-0.065	0.097	0.159	148.611567	69.450135	-1370.00	221.17
5	GUIDE	574496080	9.92	5927	-0.215	0.059	0.132	0.211	149.336129	69.802025	-2233.24	1519.93
6	BAD	574497600	10.42	5621	-0.101	-0.252	0.263	0.414	147.824120	68.451903	1602.53	-2038.71
7	GUIDE	574496312	10.29	5927	0.181	0.174	0.195	0.339	149.547505	68.718299	1519.94	419.42

2.4 Star Slots

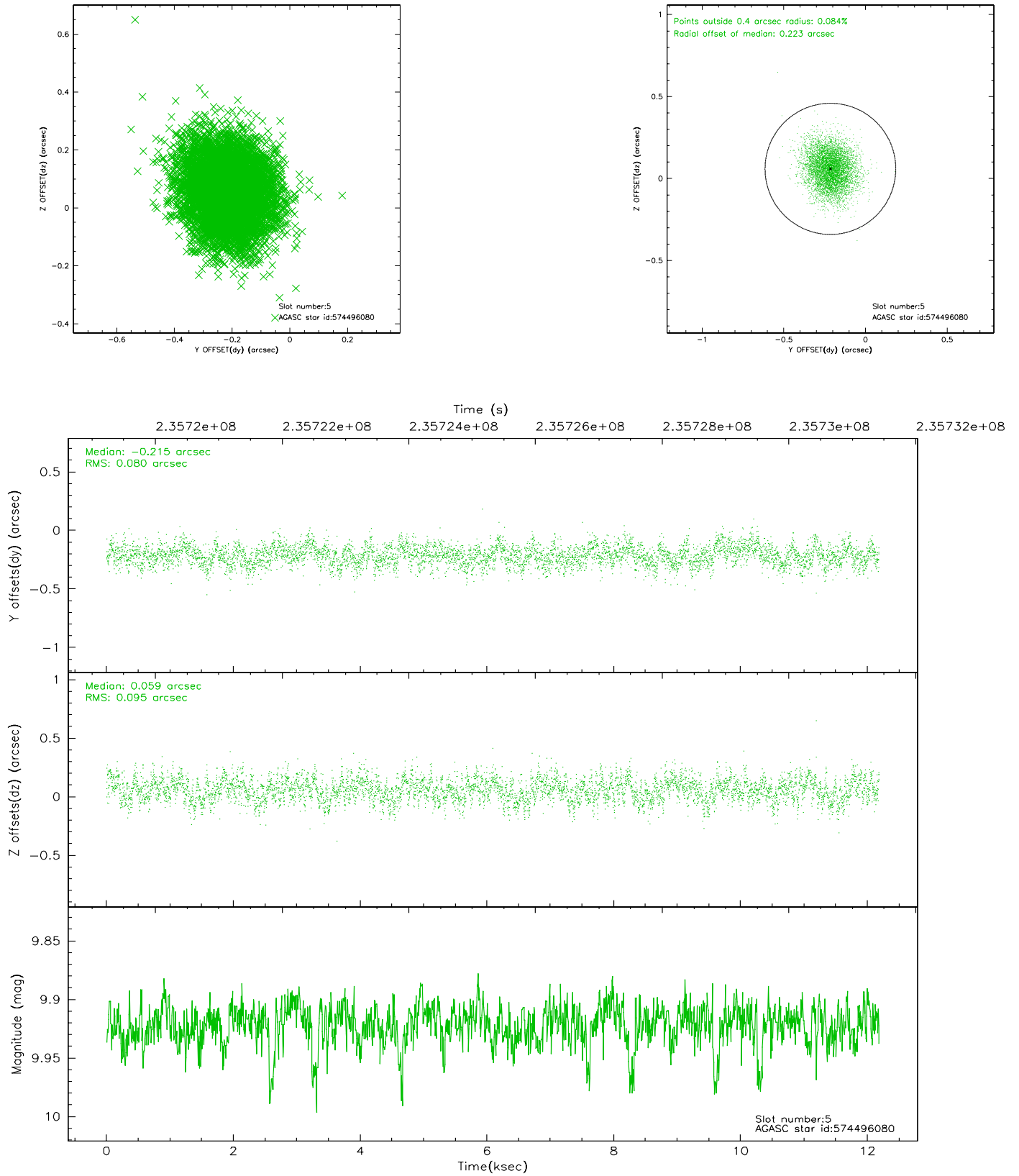
2.4.1 Slot 3



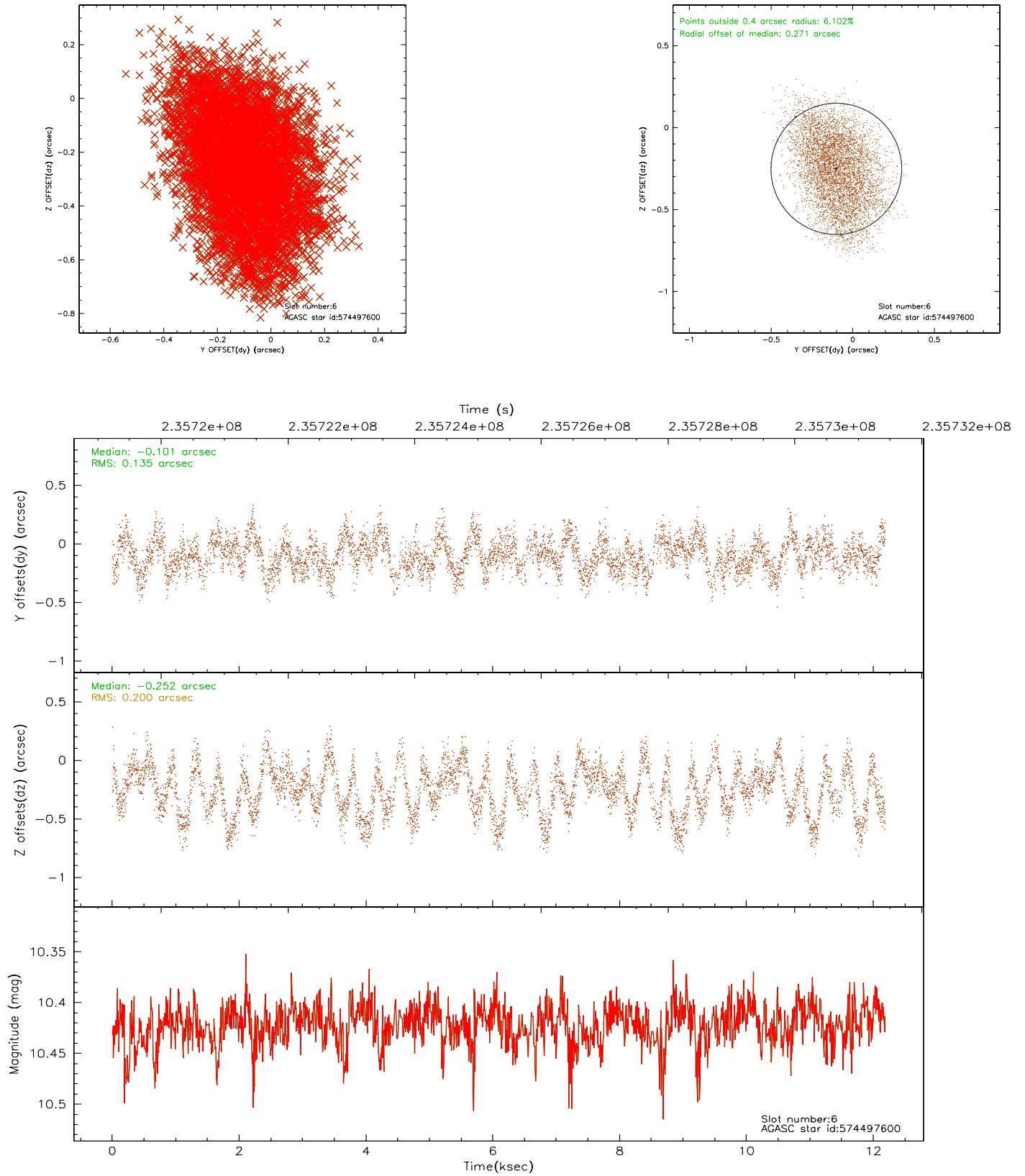
2.4.2 Slot 4



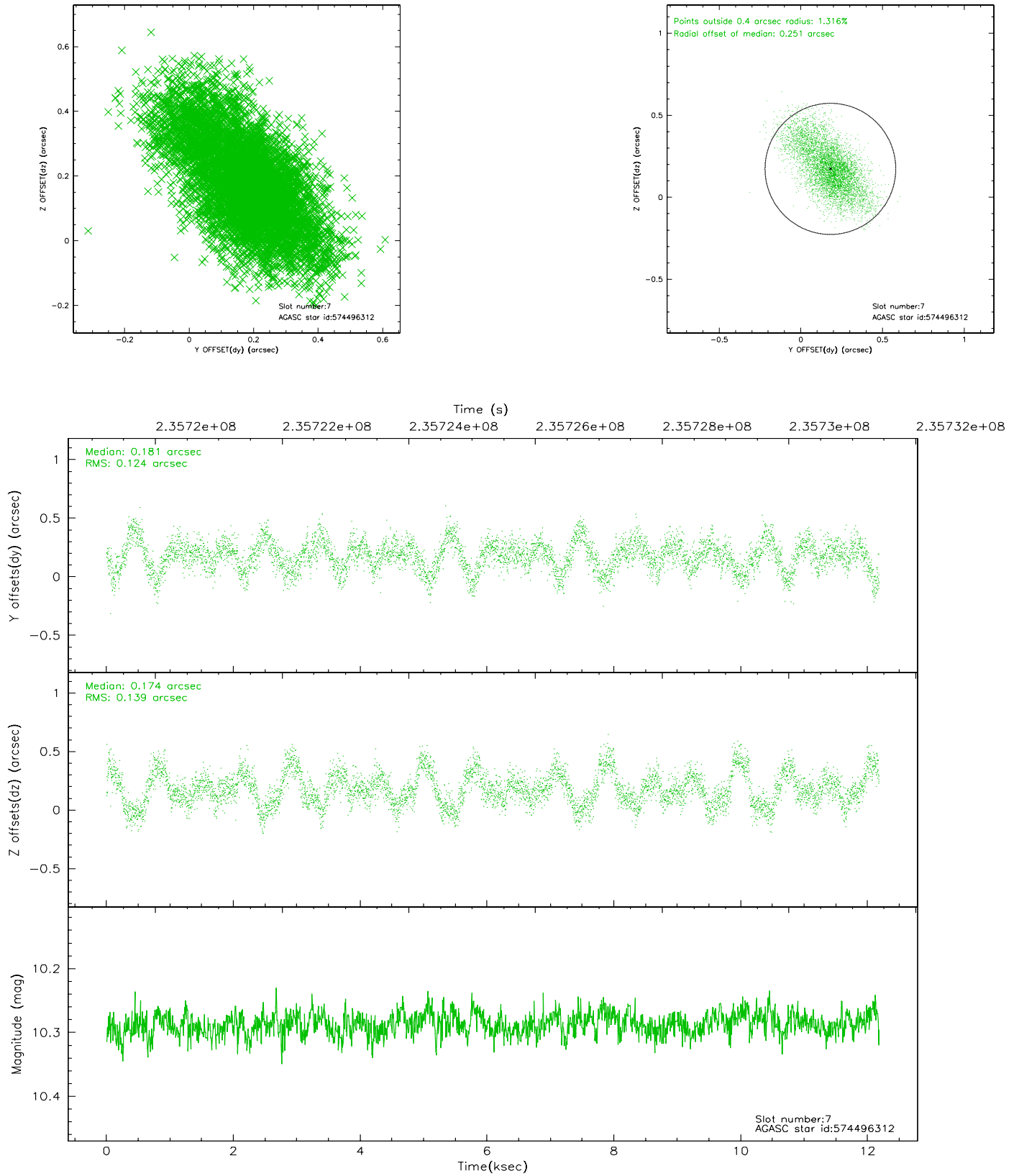
2.4.3 Slot 5



2.4.4 Slot 6

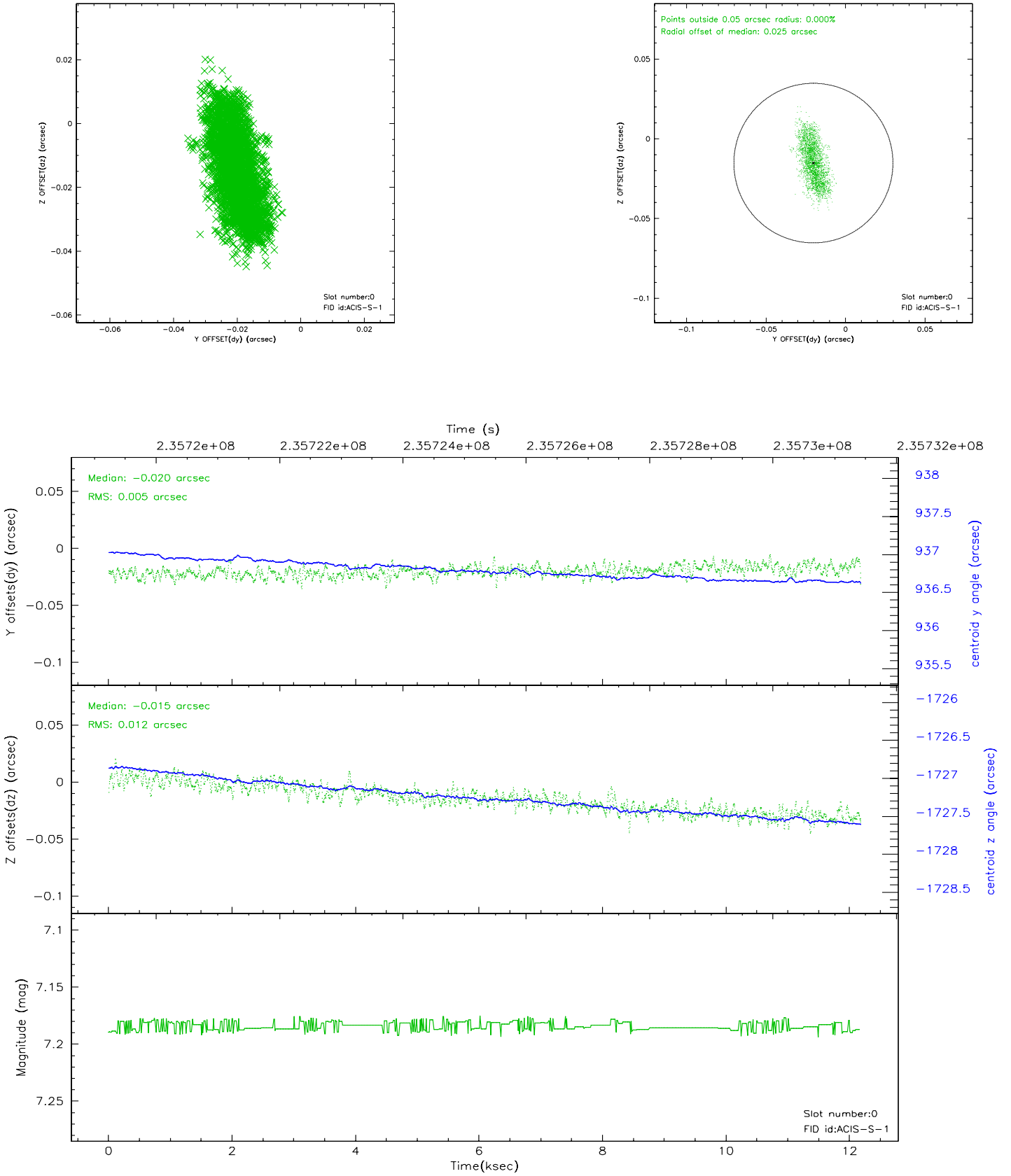


2.4.5 Slot 7

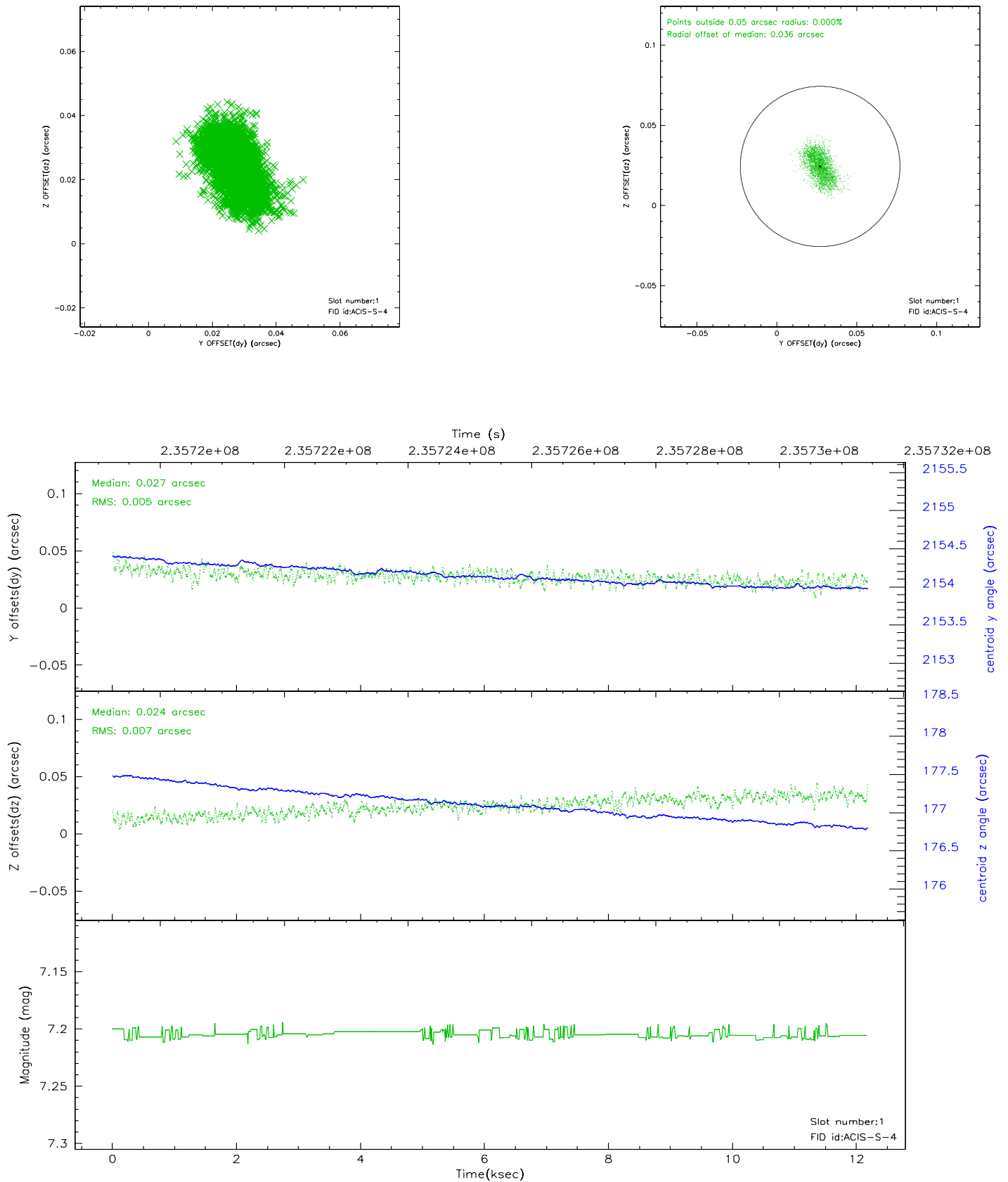


2.5 FID Slots

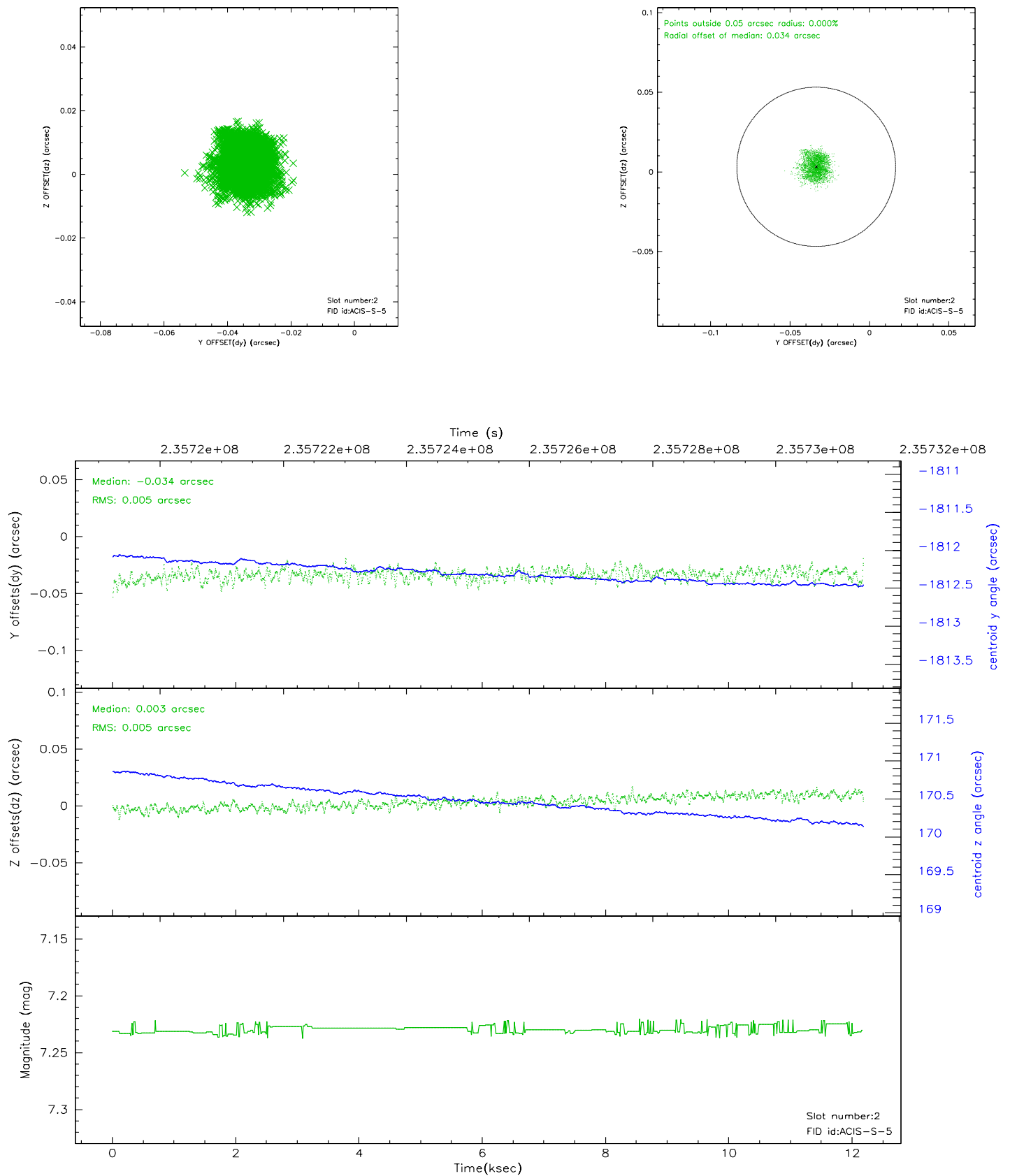
2.5.1 Slot 0



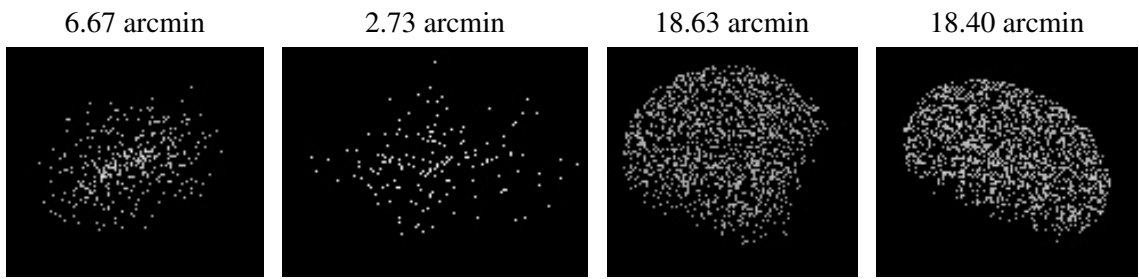
2.5.2 Slot 1



2.5.3 Slot 2



3 Point Sources



A Summary

A.1 Status

V&V Scientist	Jen Lauer
V&V Date (YYYY-MM-DD)	2006.03.10
V&V Edition	1
V&V Disposition and Status	OK
V&V Charge Time	11.95839

A.2 Comments

Comments for Obi 0

Star in slot 6 has an RMS deviation > 0.200000 arcsec

Slot 6 is not used in the aspect solution.

Roll preference met. Monitor constraint met.