

V&V Reference Report

L2 ASCDS Version : 7.6.7.1

Observation 5941 - L2 Version 002
Chandra X-Ray Center

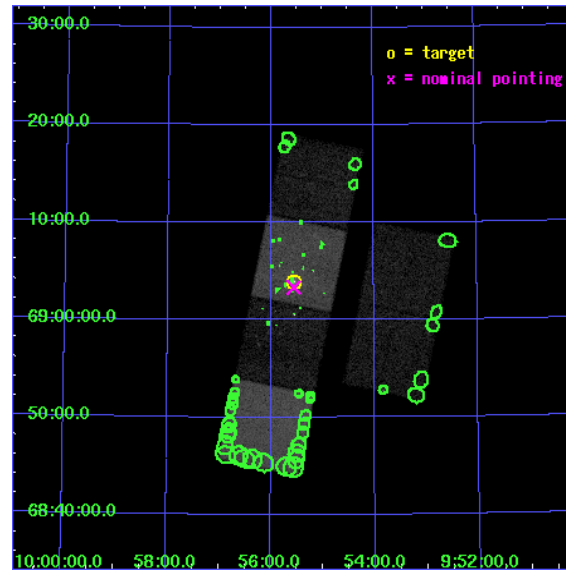
L2 Processing Date : Mar 10 2006

Contents

1	Front	2
2	OBI	3
2.1	OBI	3
2.1.1	Images	3
2.1.2	Bias	3
2.1.3	Parameters	4
2.1.4	Events	4
2.2	Compared Parameters	5
2.3	Aspect	6
2.4	Star Slots	9
2.4.1	Slot 3	9
2.4.2	Slot 4	10
2.4.3	Slot 5	11
2.4.4	Slot 6	12
2.4.5	Slot 7	13
2.5	FID Slots	14
2.5.1	Slot 0	14
2.5.2	Slot 1	15
2.5.3	Slot 2	16
3	Point Sources	17
A	Summary	18
A.1	Status	18
A.2	Comments	18

1 Front

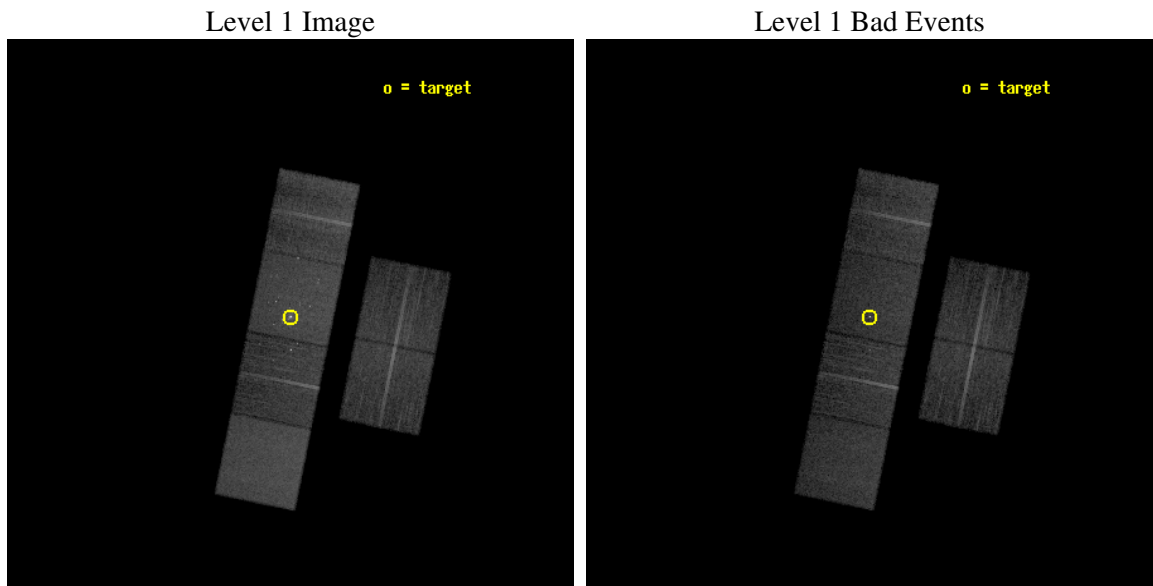
seq_num	600460
obs_id	5941
title	An Unprecedented View of a Galaxy's Dynamic X-ray Source Population
observer	Dr. David Pooley
object	M81
dtcycle	0
cycle	P
ra_targ	148.888333
dec_targ	69.065306
ra_nom	148.88903936618
dec_nom	69.055631209508
roll_nom	281.45069411024
revision	2
ontime	11958.399955451
livetime	11806.975494732
ontime2	11958.399955451
ontime3	11958.399955451
ontime5	11958.399955451
ontime6	11958.399955451
ontime7	11958.399955451
ontime8	11958.399955451
l2events	153630



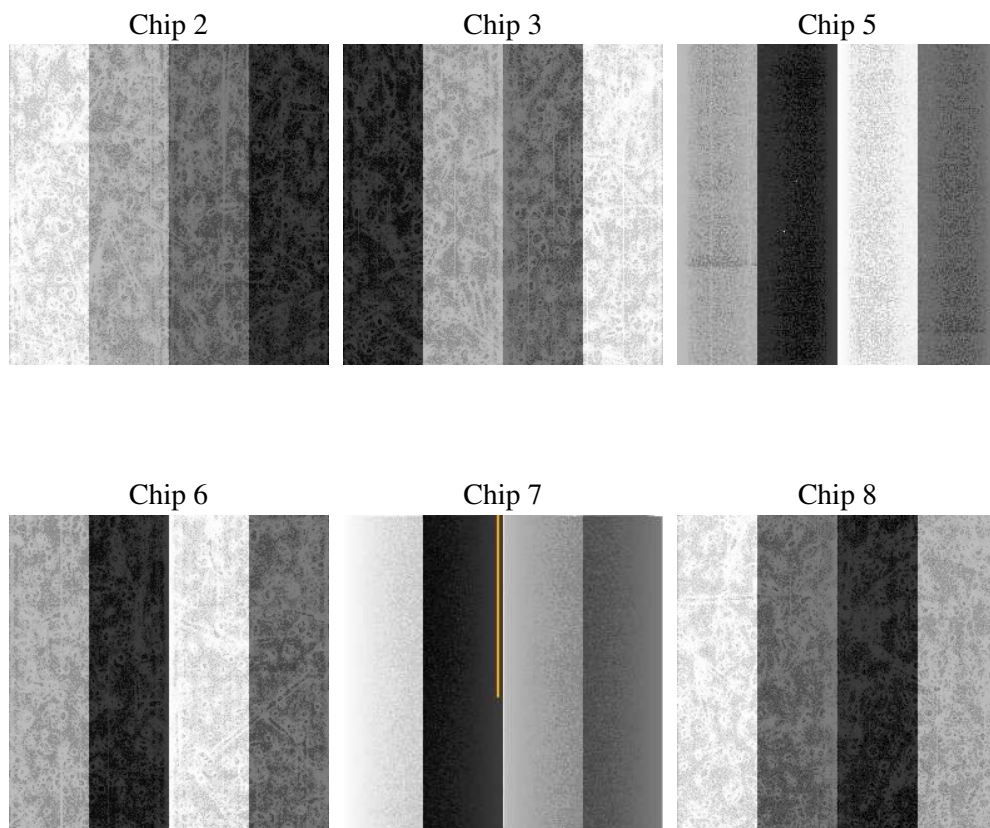
2 OBI

2.1 OBI

2.1.1 Images



2.1.2 Bias



2.1.3 Parameters

obi_num	1
ascdsver	7.6.7.1
caldbver	3.2.1
date	2006-03-10T06:48:37
revision	2

sched_exp_time	12000.000000
ontime	11962.532816142
ontime2	11962.532816142
ontime3	11962.532816142
ontime5	11962.532816142
ontime6	11962.532816142
ontime7	11962.532816142
ontime8	11962.532816142
l1events	666990

2.1.4 Events

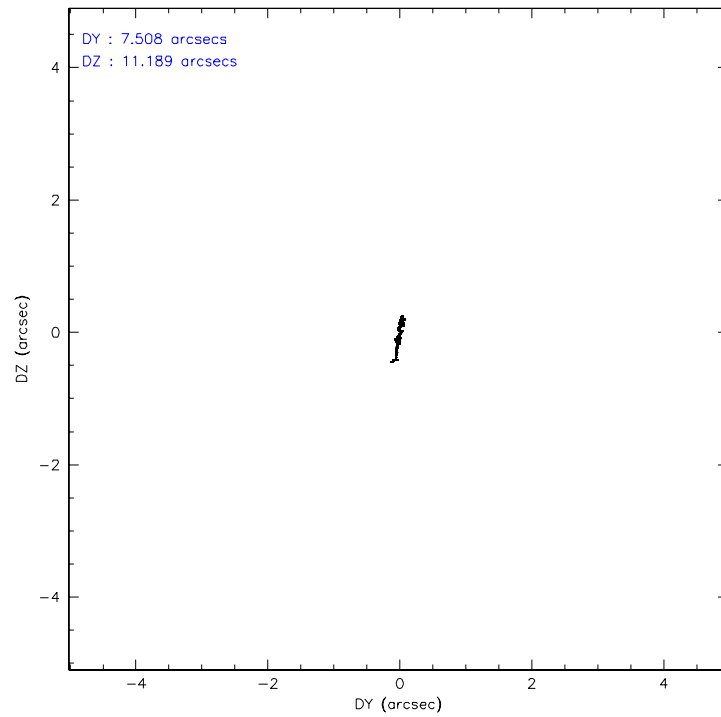
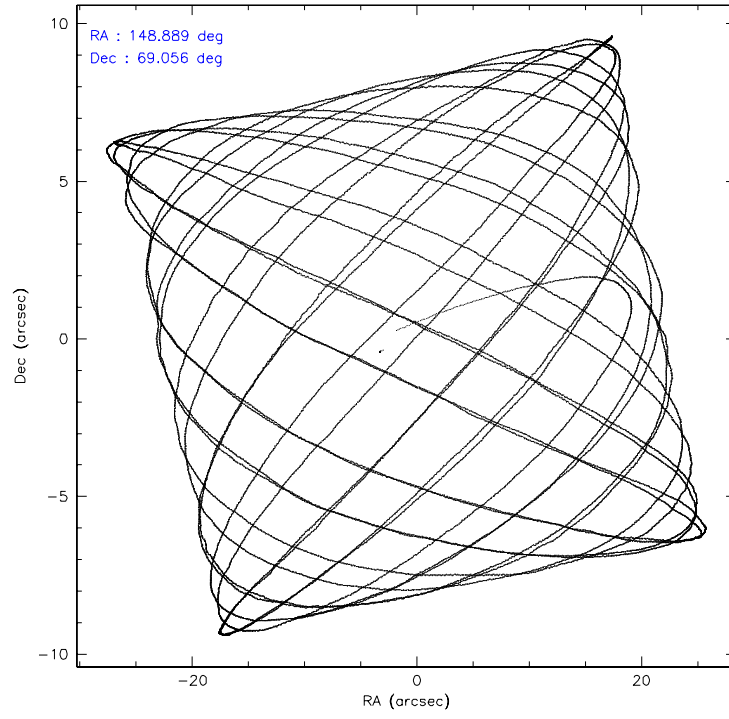
	ccd 2	ccd 3	ccd 5	ccd 6	ccd 7	ccd 8
level 1 events	93988	88590	135900	94623	137063	116826
rejected events	82558	77913	78106	81534	80664	91450
rejected %	87%	87%	57%	86%	58%	78%

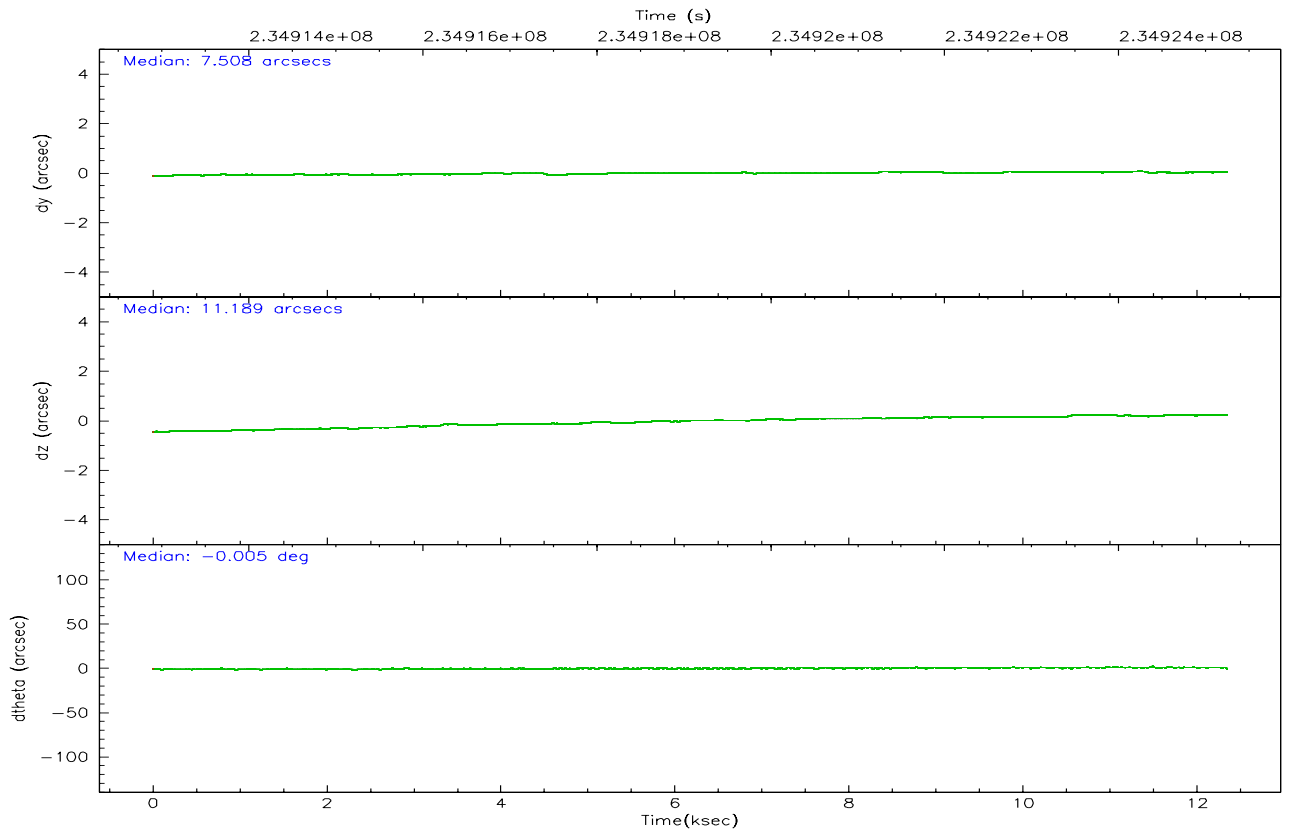
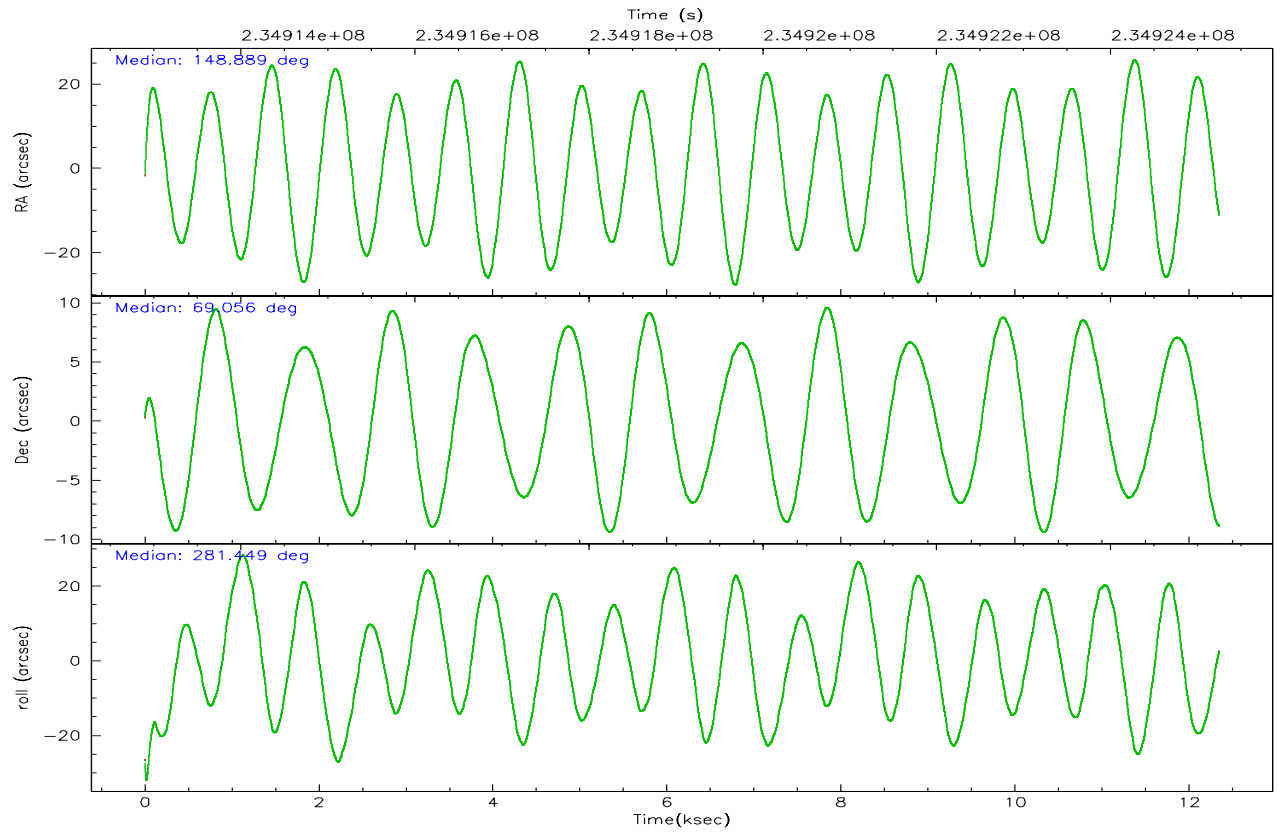
	ccd 2	ccd 3	ccd 5	ccd 6	ccd 7	ccd 8
grade 0 events	5060	4690	2058	5869	4823	7704
	5%	5%	1%	6%	3%	6%
grade 1 events	45	64	122	86	148	85
	0%	0%	0%	0%	0%	0%
grade 2 events	2332	2067	18054	2614	14225	5773
	2%	2%	13%	2%	10%	4%
grade 3 events	1108	1013	1365	1153	3158	2640
	1%	1%	1%	1%	2%	2%
grade 4 events	1028	1005	1176	1118	3135	2431
	1%	1%	0%	1%	2%	2%
grade 5 events	3773	4100	6285	4319	8746	5616
	4%	4%	4%	4%	6%	4%
grade 6 events	1904	1905	35161	2337	31068	6856
	2%	2%	25%	2%	22%	5%
grade 7 events	78738	73746	71679	77127	71760	85721
	83%	83%	52%	81%	52%	73%

2.2 Compared Parameters

Parameter	Planned	Actual	Parameter	Planned	Actual
Instrument	ACIS	ACIS	Obspar format version number	6	6
Detector	ACIS-235678	ACIS-235678	Obspar file type	PREDICTED	ACTUAL
Grating	NONE	NONE	Obspar update status	NONE	UPDATED
Data mode	FAINT	FAINT	On-chip summing requested	N	N
Observation mode	POINTING	POINTING	Subarray requested	NONE	NONE
Pointing RA	148.837728	148.8890393661846	Alternating exposures requested	N	N
Pointing Dec	69.075789	69.05563120950802	Primary exposure time	0.000000	3.2
Pointing Roll	281.342023	281.4506941102413			
SIM focus pos (mm)	-0.684267	-0.6828225247311905			
SIM defocus (mm)	0	0.001444936568705701			
SIM translation stage pos (mm)	-190.132523	-190.1400660498719			
SIM translation stage offset (mm)	0	0.00754346686406393			
Observation start time	234913243.184000	234912194.68406			
Observation start date	2005-06-11T21:39:39	2005-06-11T21:23:14			
Observation end time	234925243.184000	234926691.77223			
Observation end date	2005-06-12T00:59:39	2005-06-12T01:24:51			
Read mode	TIMED	TIMED			

2.3 Aspect



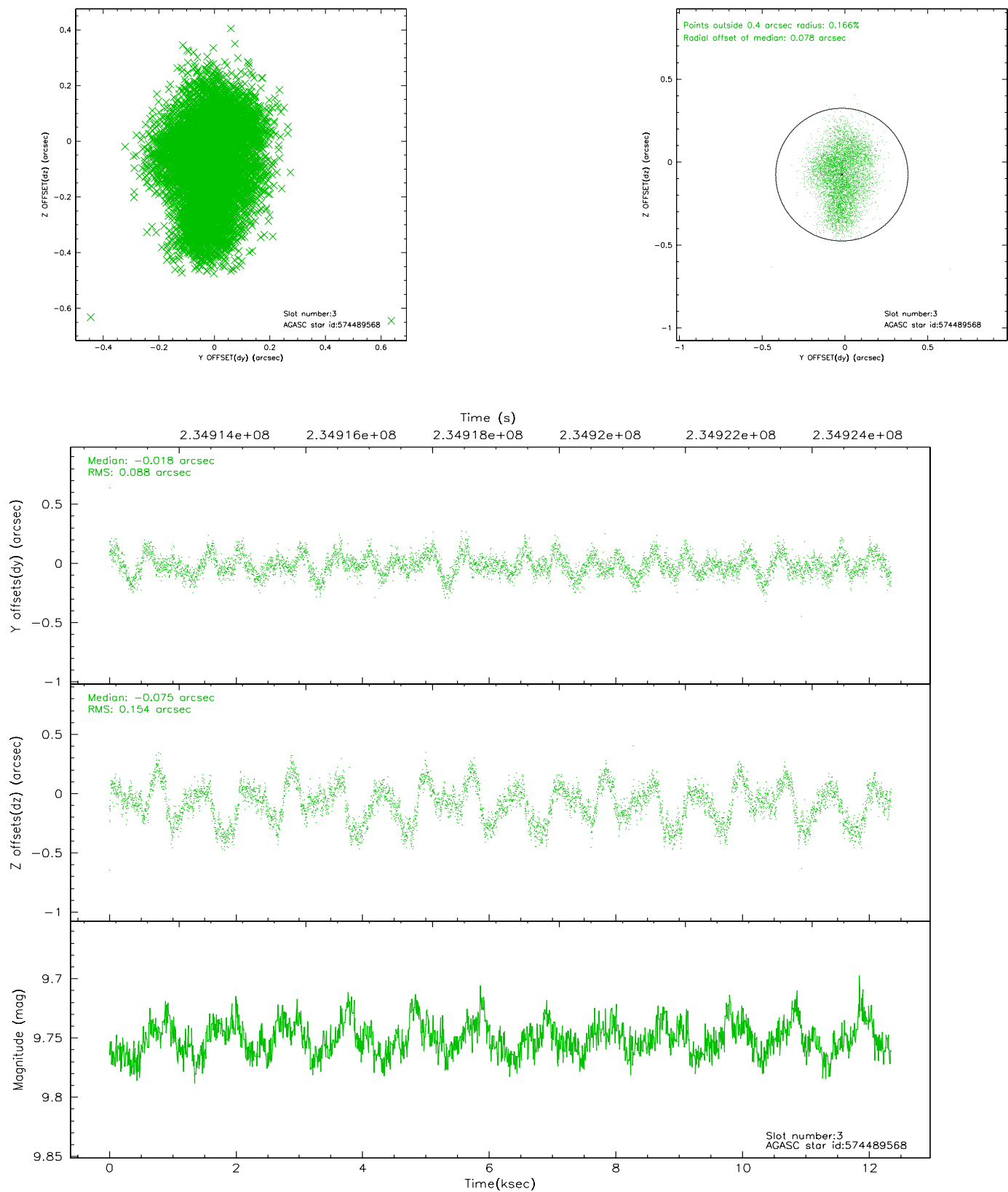


Slot Statistics

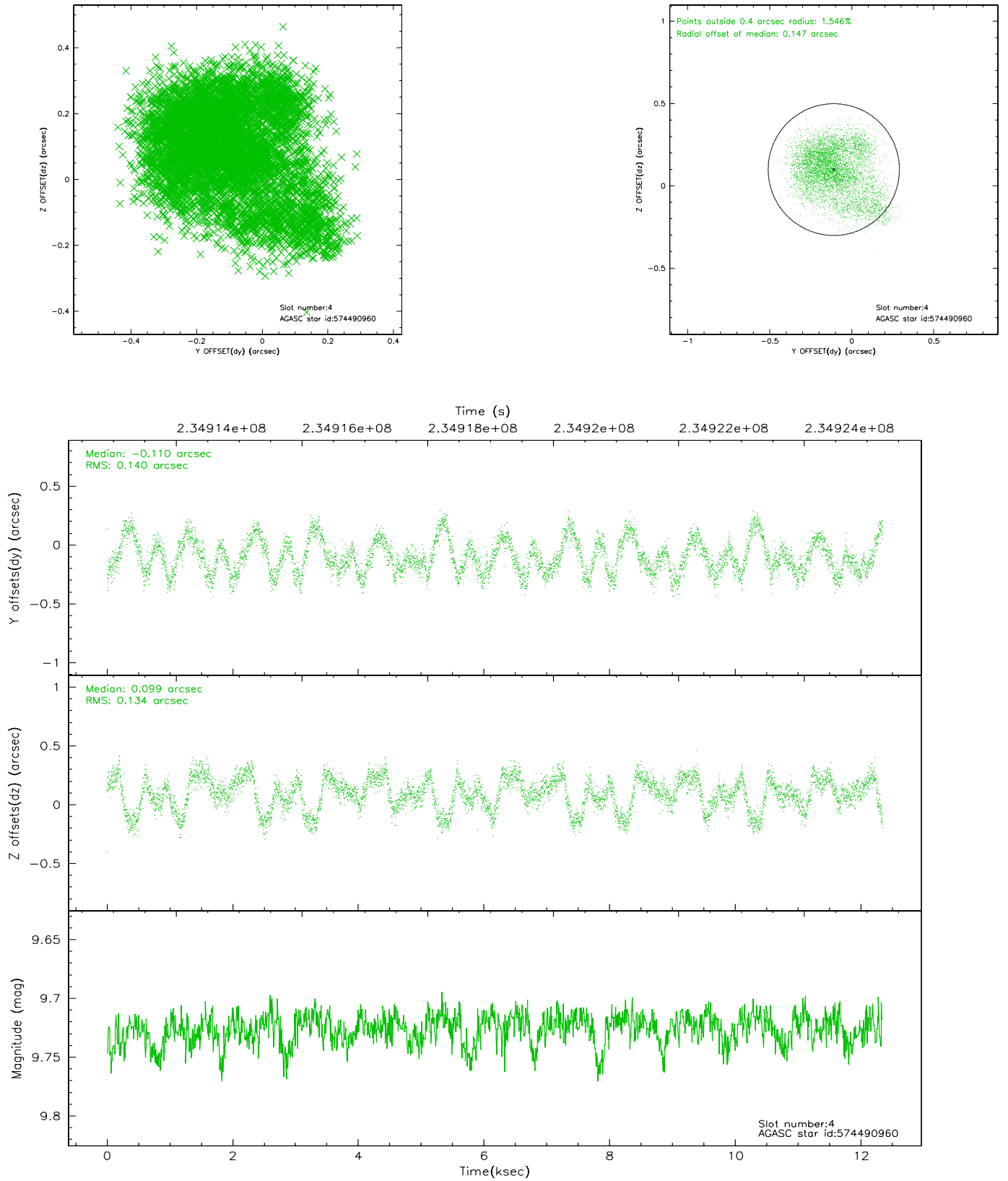
slot	status	id	mag	n_pts	med_dy	med_dz	dr1	dr2	ra	dec	mean_y	mean_z
0	FID	ACIS-S-2	7.09	3012	-0.027	0.004	0.008	0.013	0.000000	0.000000	-760.26	-1732.43
1	FID	ACIS-S-4	7.20	3012	0.053	0.012	0.006	0.010	0.000000	0.000000	2152.88	175.70
2	FID	ACIS-S-5	7.23	3011	-0.057	-0.007	0.007	0.012	0.000000	0.000000	-1812.65	169.74
3	GUIDE	574489568	9.75	6019	-0.018	-0.075	0.191	0.299	147.223974	69.438157	-1706.26	-1738.60
4	GUIDE	574490960	9.73	6017	-0.110	0.099	0.209	0.339	148.185918	69.658768	-2222.29	-386.50
5	GUIDE	574491712	9.93	6015	-0.122	-0.066	0.117	0.189	147.262590	69.570889	-2161.71	-1584.96
6	GUIDE	574497600	10.47	5907	0.123	-0.085	0.184	0.294	147.824120	68.451903	1927.85	-1753.98
7	GUIDE	574496360	9.47	6017	0.117	0.147	0.120	0.183	150.806604	68.529829	2397.22	2165.02

2.4 Star Slots

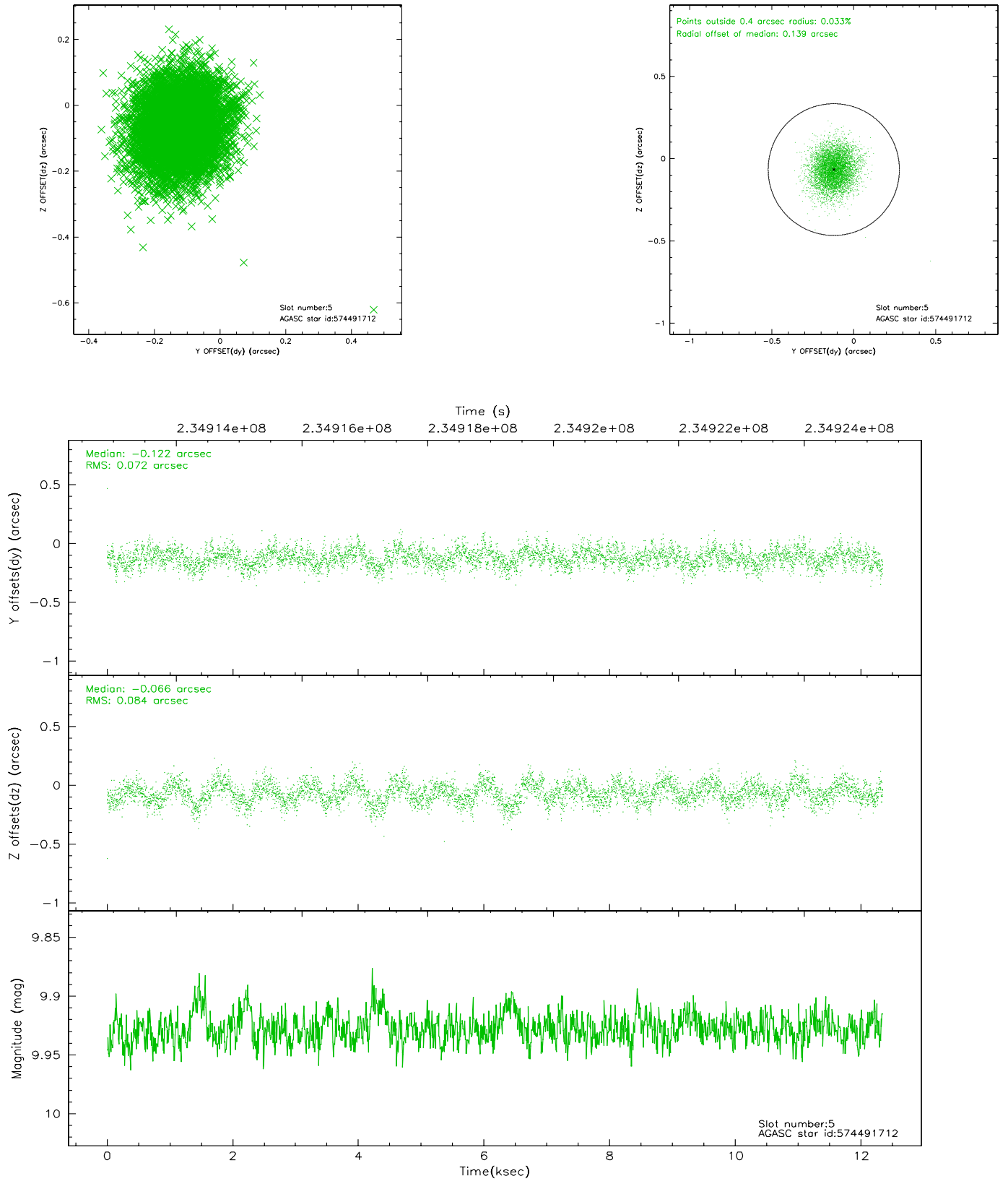
2.4.1 Slot 3



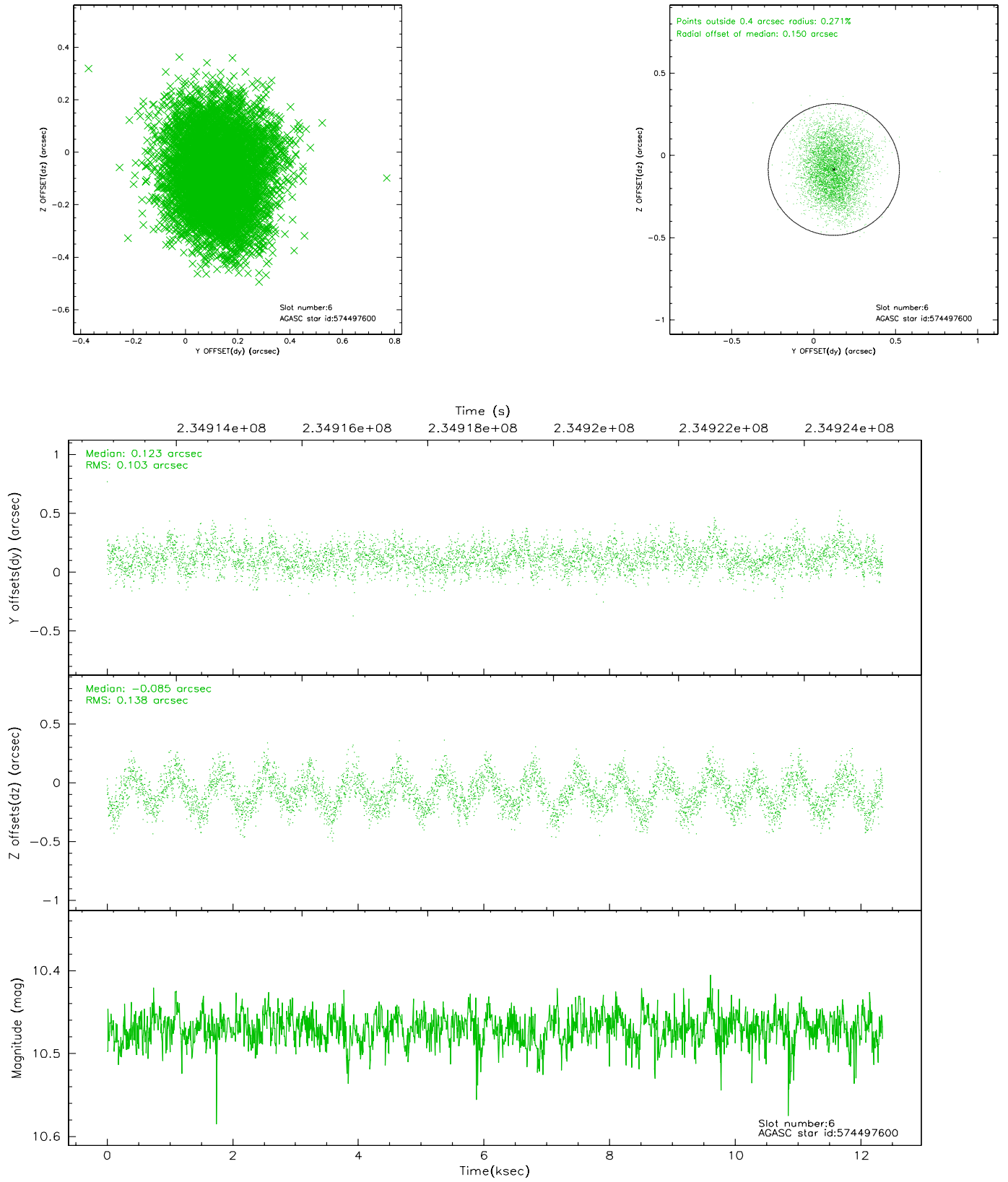
2.4.2 Slot 4



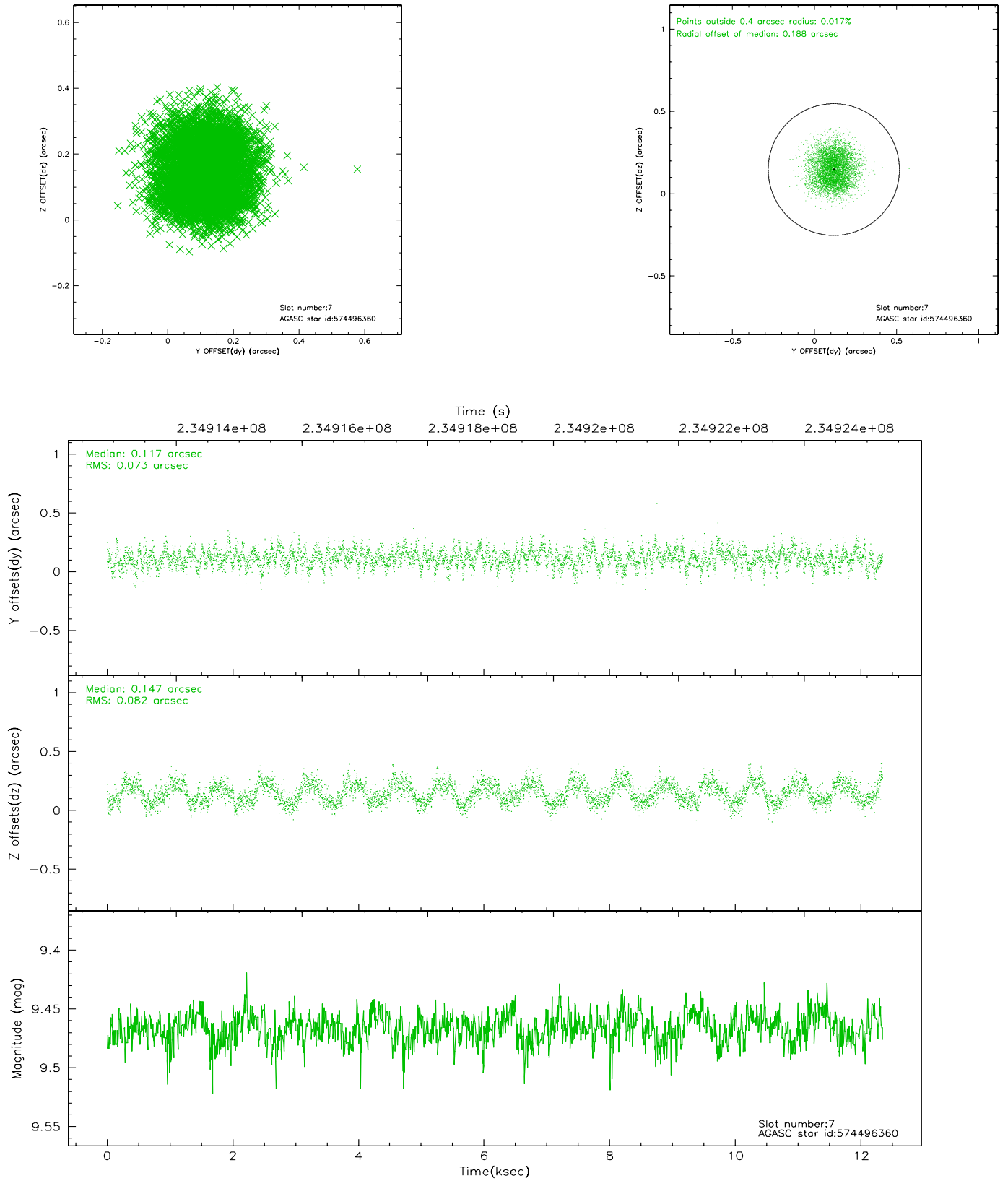
2.4.3 Slot 5



2.4.4 Slot 6

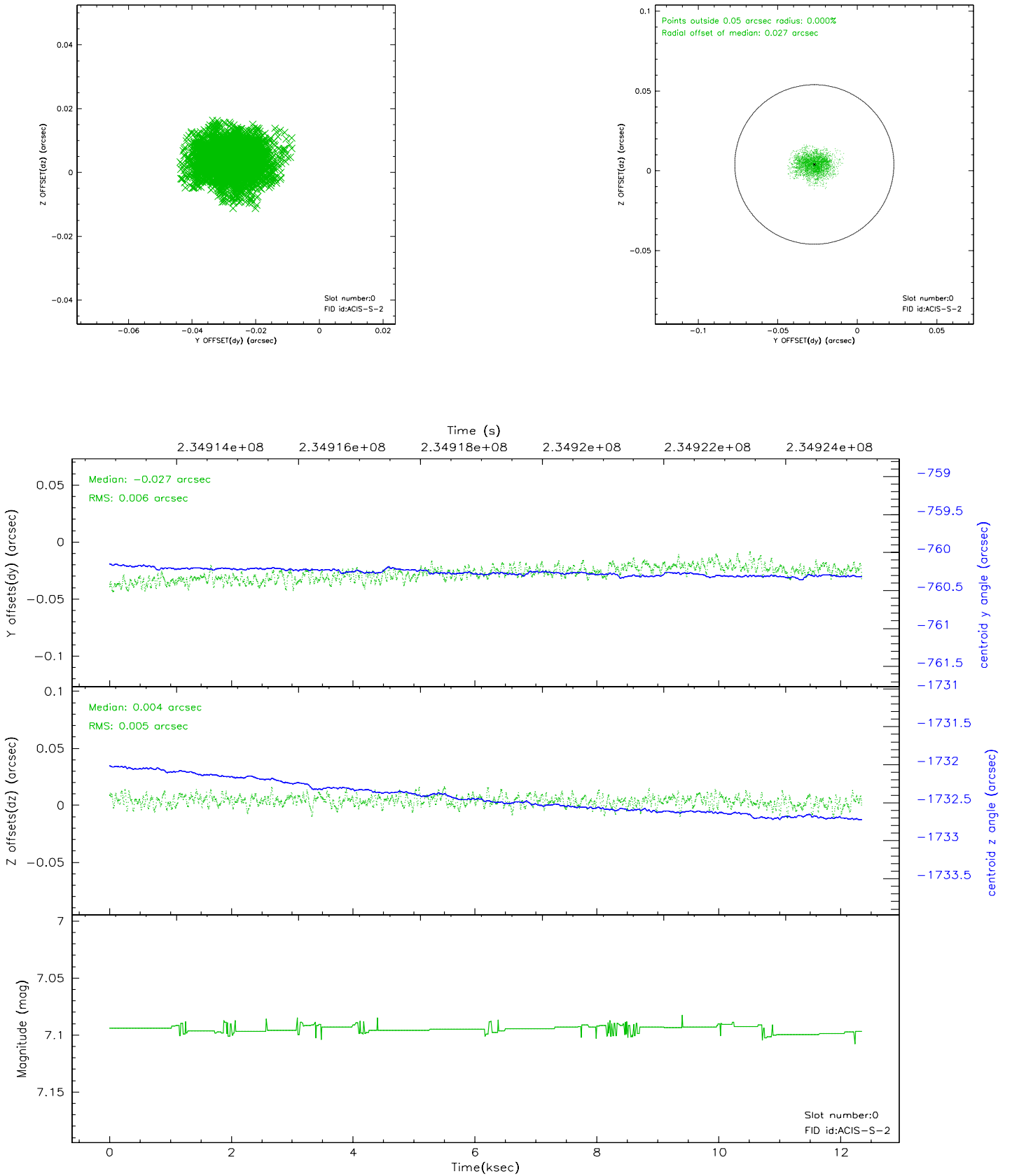


2.4.5 Slot 7

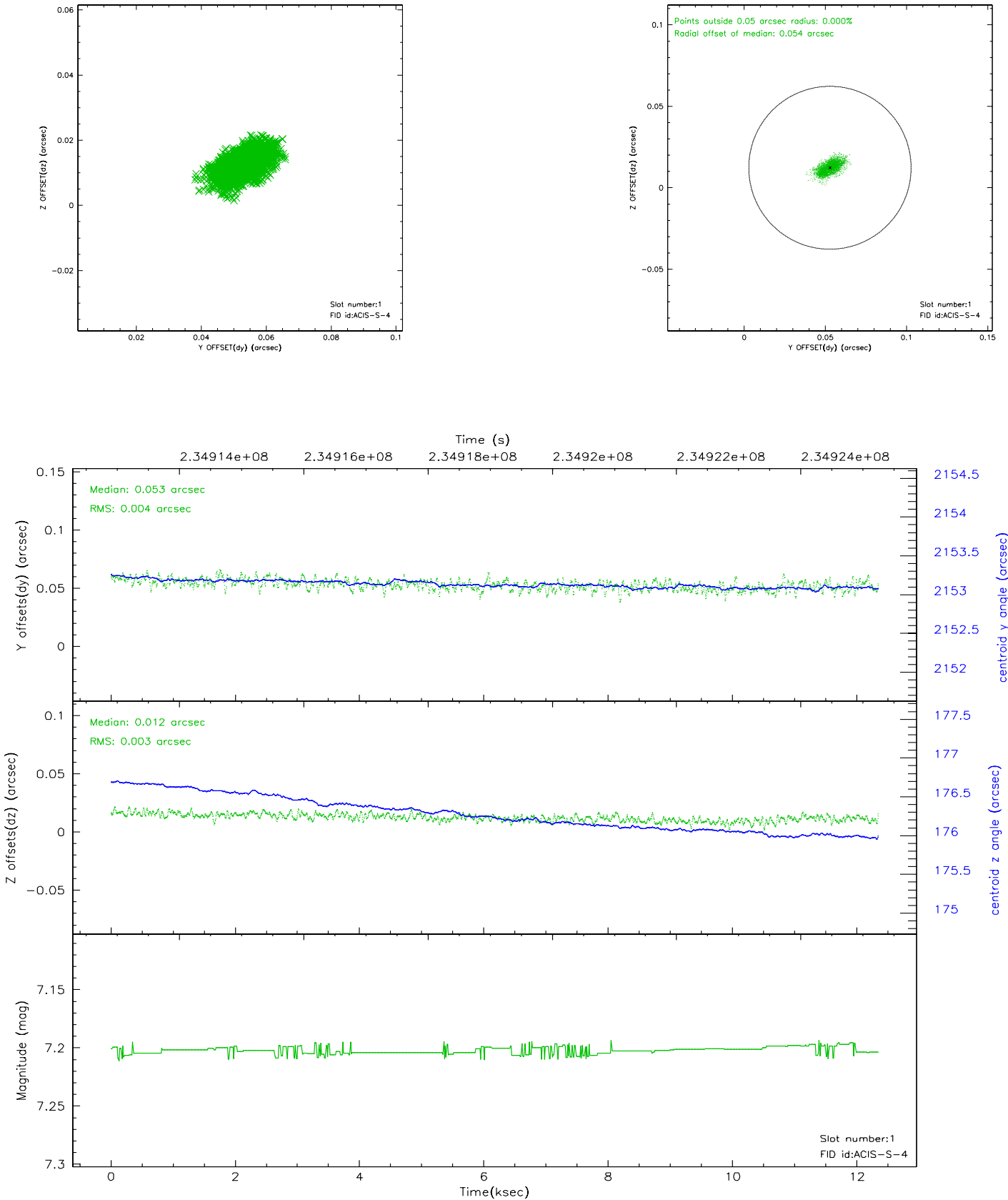


2.5 FID Slots

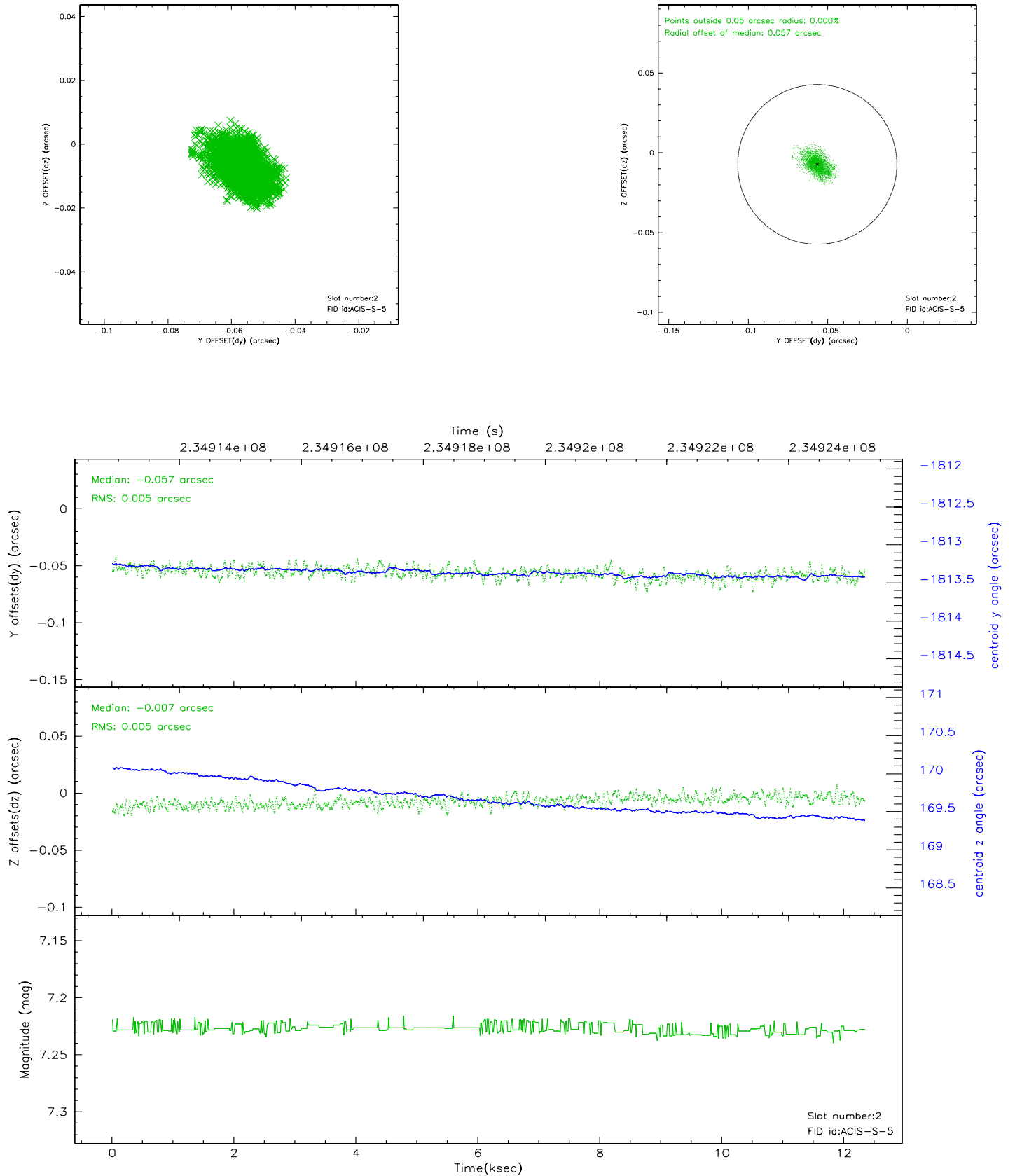
2.5.1 Slot 0



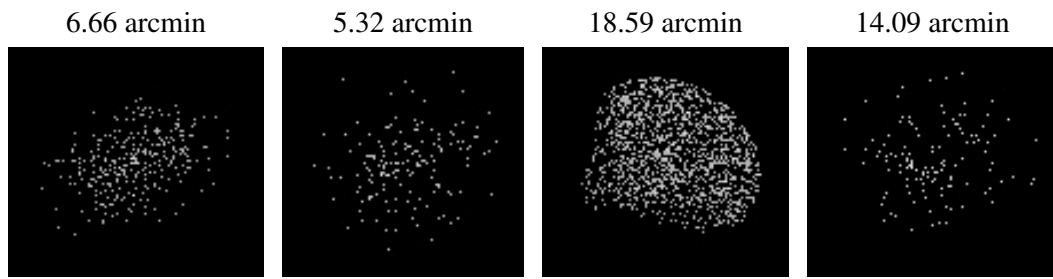
2.5.2 Slot 1



2.5.3 Slot 2



3 Point Sources



A Summary

A.1 Status

V&V Scientist	Jen Lauer
V&V Date (YYYY-MM-DD)	2006.03.10
V&V Edition	1
V&V Disposition and Status	OK
V&V Charge Time	11.95839

A.2 Comments

Monitor constraint met. Roll preference met. The ACIS focal plane temperature was above the calibration limits for the first 2ksec of the observation.