

V&V Reference Report

L2 ASCDS Version : 7.6.7.1

Observation 5938 - L2 Version 002
Chandra X-Ray Center

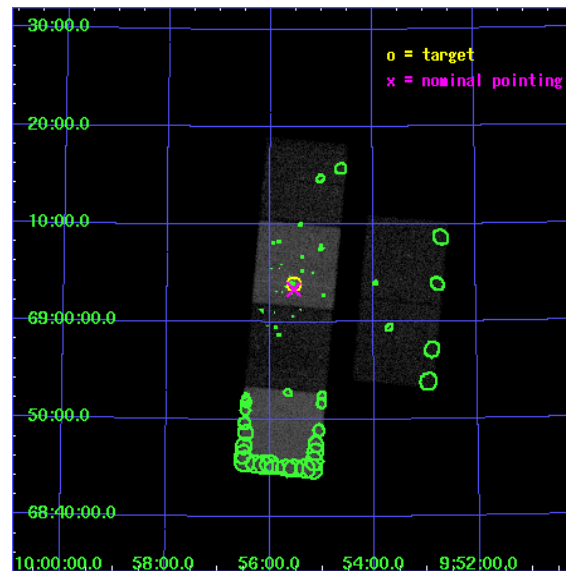
L2 Processing Date : Mar 8 2006

Contents

1	Front	2
2	OBI	3
2.1	OBI	3
2.1.1	Images	3
2.1.2	Bias	3
2.1.3	Parameters	4
2.1.4	Events	4
2.2	Compared Parameters	5
2.3	Aspect	6
2.4	Star Slots	9
2.4.1	Slot 3	9
2.4.2	Slot 4	10
2.4.3	Slot 5	11
2.4.4	Slot 6	12
2.4.5	Slot 7	13
2.5	FID Slots	14
2.5.1	Slot 0	14
2.5.2	Slot 1	15
2.5.3	Slot 2	16
3	Point Sources	17
A	Summary	18
A.1	Status	18
A.2	Comments	18

1 Front

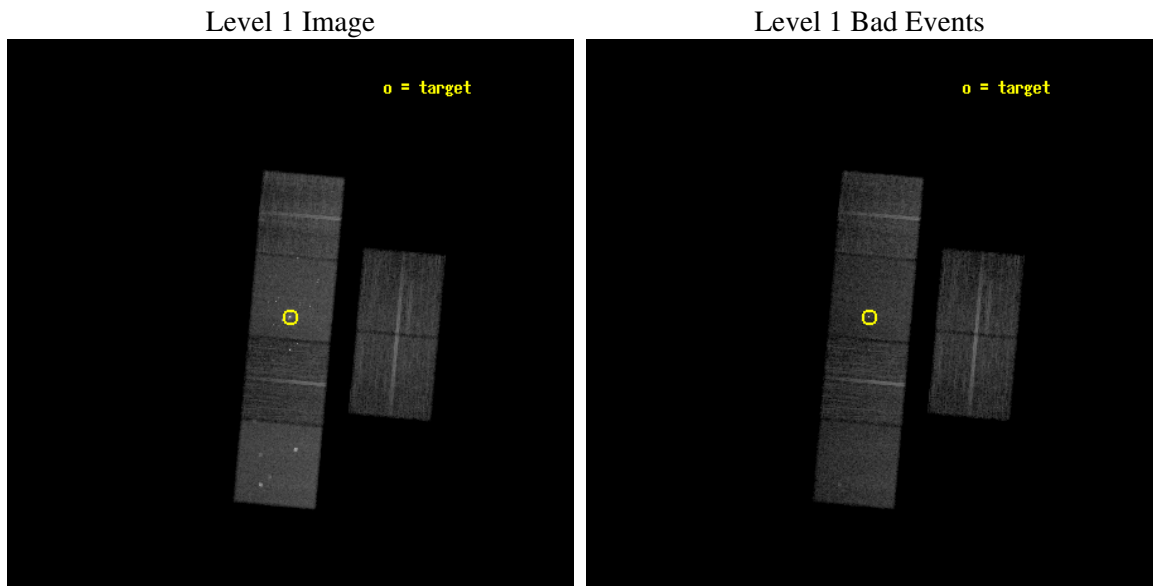
seq_num	600457
obs_id	5938
title	An Unprecedented View of a Galaxy's Dynamic X-ray Source Population
observer	Dr. David Pooley
object	M81
dtcycle	0
cycle	P
ra_targ	148.888333
dec_targ	69.065306
ra_nom	148.88605971242
dec_nom	69.05570645436
roll_nom	275.15875154556
revision	2
ontime	11958.399955451
livetime	11806.975494732
ontime2	11958.399955451
ontime3	11958.399955451
ontime5	11958.399955451
ontime6	11955.158995181
ontime7	11958.399955451
ontime8	11958.399955451
l2events	151308



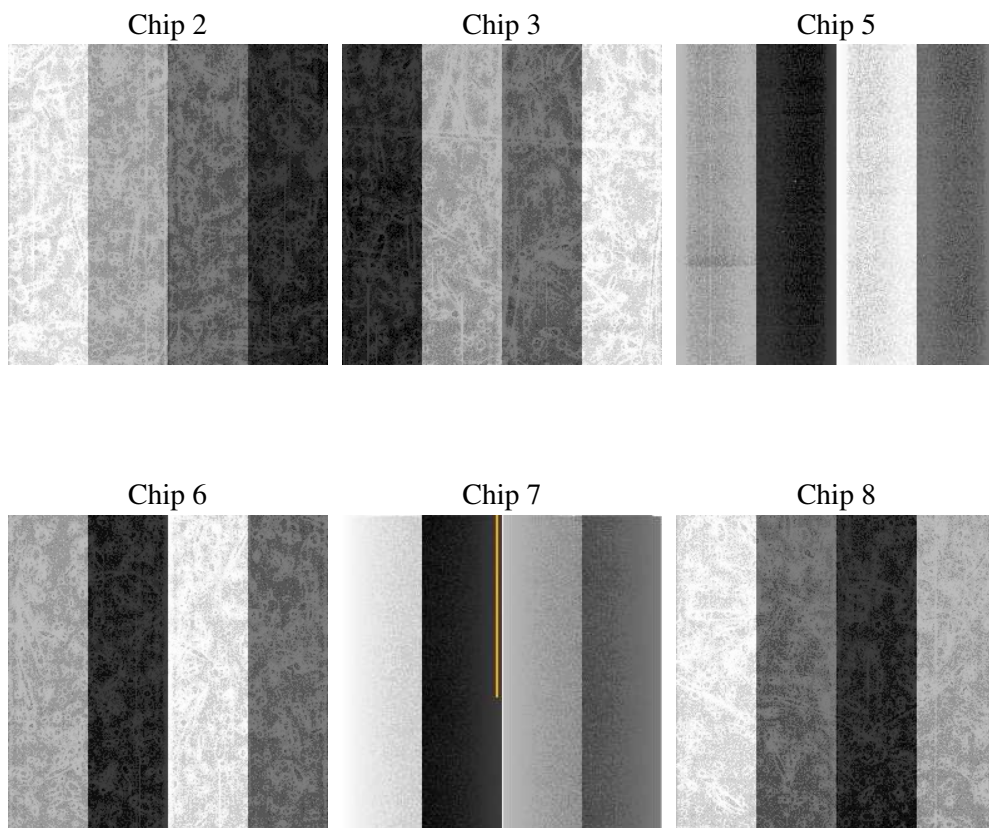
2 OBI

2.1 OBI

2.1.1 Images



2.1.2 Bias



2.1.3 Parameters

obi_num	0
ascdsver	7.6.7.1
caldbver	3.2.1
date	2006-03-08T17:54:33
revision	2

sched_exp_time	12000.000000
ontime	11962.533565998
ontime2	11962.533536077
ontime3	11962.533536077
ontime5	11962.533536077
ontime6	11959.292575806
ontime7	11962.533565998
ontime8	11962.533536077
l1events	656172

2.1.4 Events

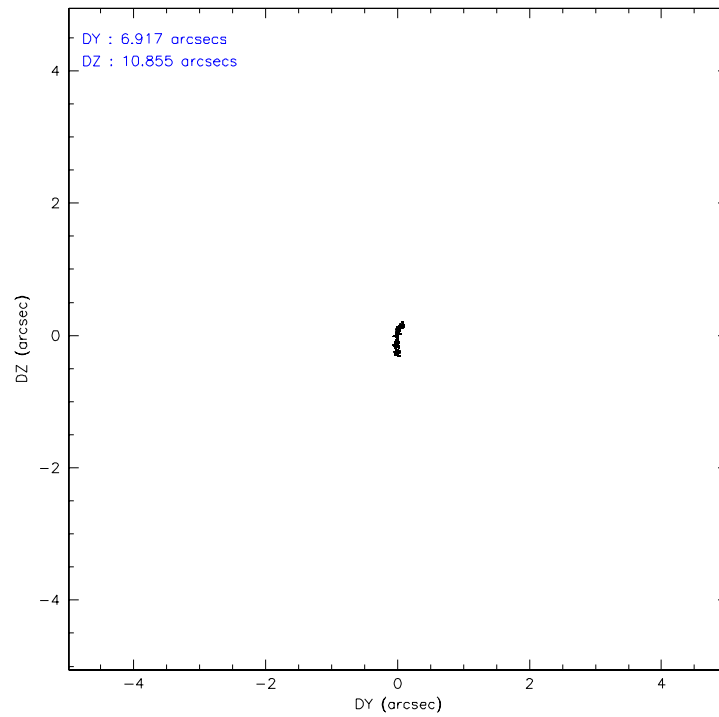
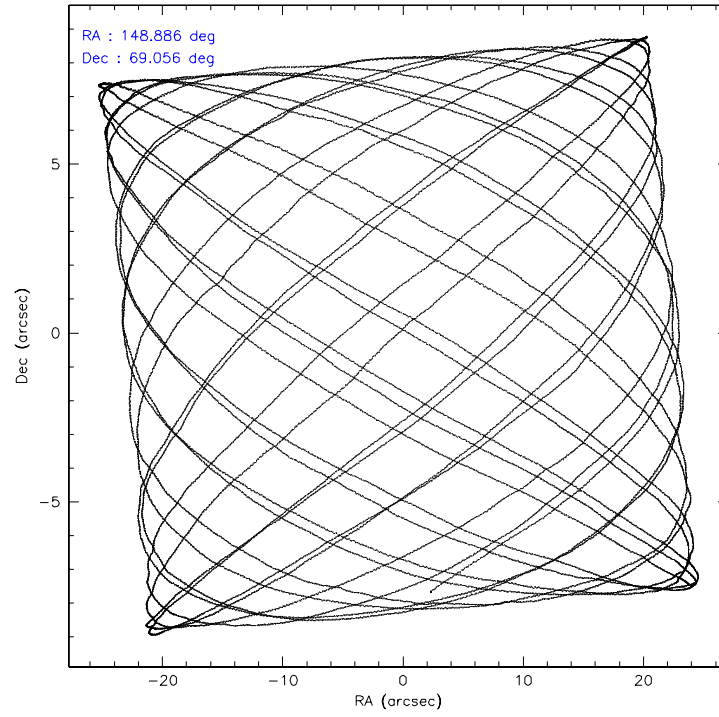
	ccd 2	ccd 3	ccd 5	ccd 6	ccd 7	ccd 8
level 1 events	89790	87542	137272	92036	133886	115646
rejected events	78894	76992	75777	79101	78864	90915
rejected %	87%	87%	55%	85%	58%	78%

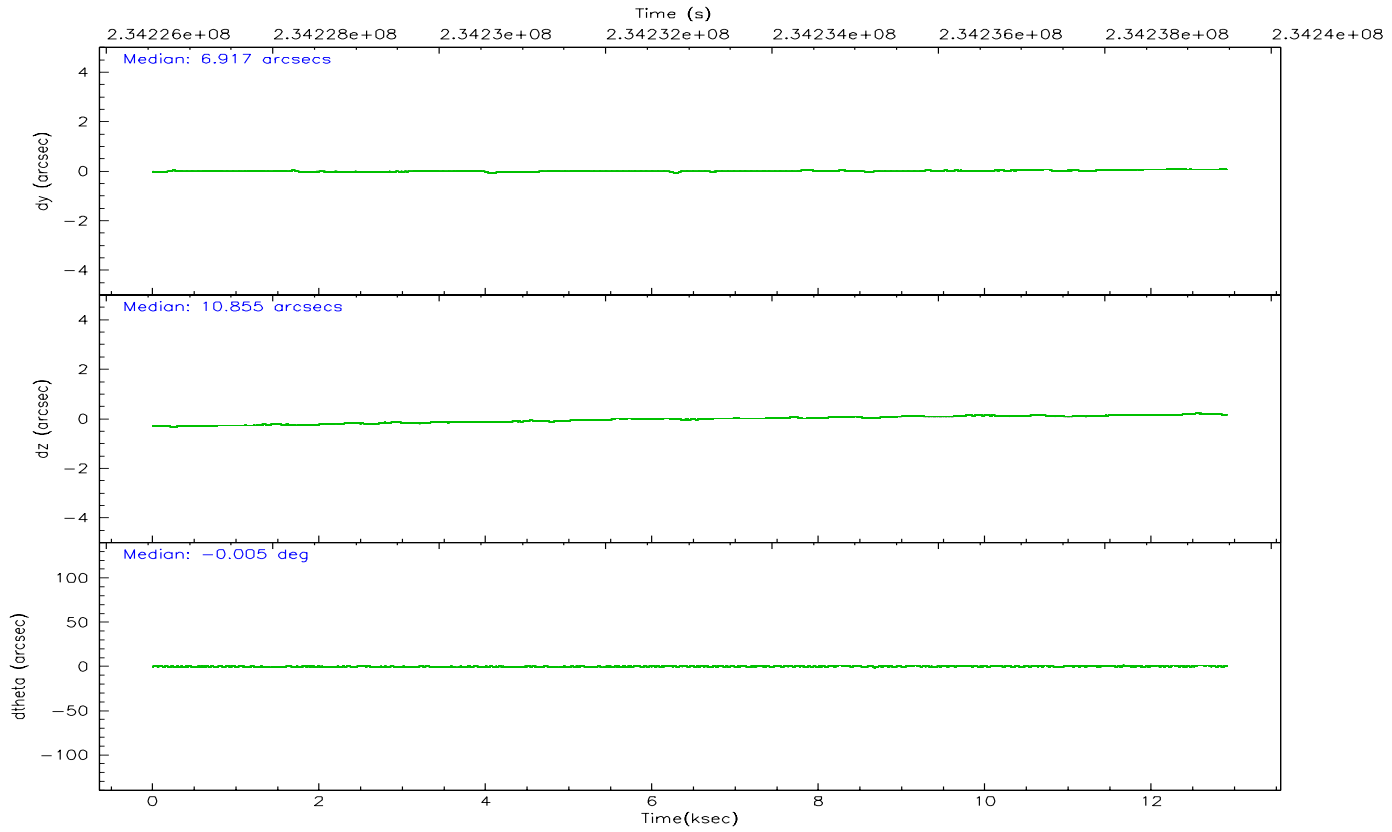
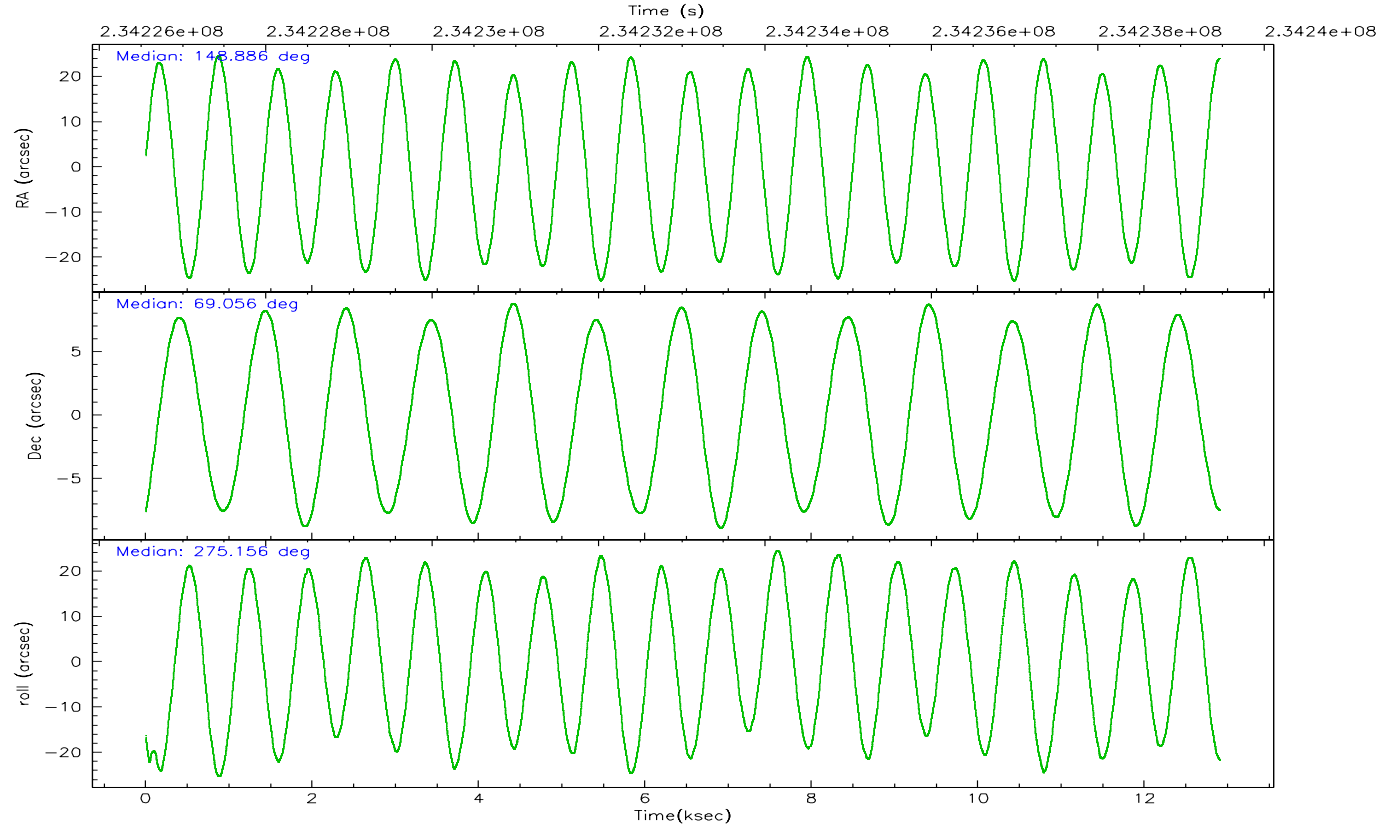
	ccd 2	ccd 3	ccd 5	ccd 6	ccd 7	ccd 8
grade 0 events	4763	4617	6229	5945	4875	7783
	5%	5%	4%	6%	3%	6%
grade 1 events	55	53	260	83	170	83
	0%	0%	0%	0%	0%	0%
grade 2 events	2281	1979	18651	2496	13625	5583
	2%	2%	13%	2%	10%	4%
grade 3 events	993	1018	1211	1118	3077	2545
	1%	1%	0%	1%	2%	2%
grade 4 events	1016	1016	1240	1053	3030	2332
	1%	1%	0%	1%	2%	2%
grade 5 events	3658	3972	6388	4236	8267	5593
	4%	4%	4%	4%	6%	4%
grade 6 events	1844	1922	34216	2328	30438	6496
	2%	2%	24%	2%	22%	5%
grade 7 events	75180	72965	69077	74777	70404	85231
	83%	83%	50%	81%	52%	73%

2.2 Compared Parameters

Parameter	Planned	Actual	Parameter	Planned	Actual
Instrument	ACIS	ACIS	Obspar format version number	6	6
Detector	ACIS-235678	ACIS-235678	Obspar file type	PREDICTED	ACTUAL
Grating	NONE	NONE	Obspar update status	NONE	UPDATED
Data mode	FAINT	FAINT	On-chip summing requested	N	N
Observation mode	POINTING	POINTING	Subarray requested	NONE	NONE
Pointing RA	148.841248	148.8860597124155	Alternating exposures requested	N	N
Pointing Dec	69.077716	69.05570645436019	Primary exposure time	0.000000	3.2
Pointing Roll	275.043974	275.1587515455619			
SIM focus pos (mm)	-0.684267	-0.6828225247311905			
SIM defocus (mm)	0	0.001444936568705701			
SIM translation stage pos (mm)	-190.132523	-190.1400660498719			
SIM translation stage offset (mm)	0	0.00754346686406393			
Observation start time	234227474.184000	234226149.85276			
Observation start date	2005-06-03T23:10:10	2005-06-03T22:49:09			
Observation end time	234239474.184000	234240514.20341			
Observation end date	2005-06-04T02:30:10	2005-06-04T02:48:34			
Read mode	TIMED	TIMED			

2.3 Aspect



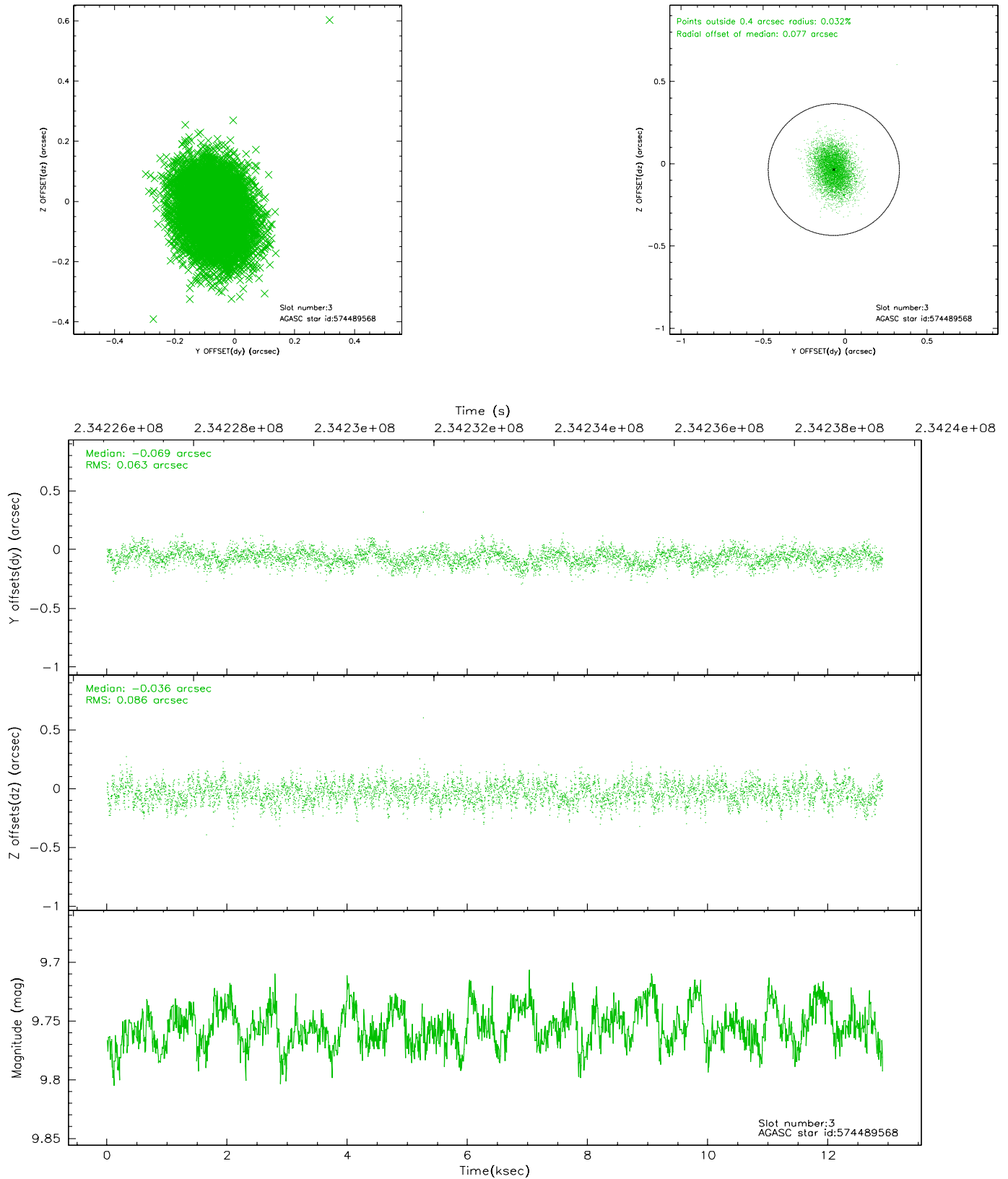


Slot Statistics

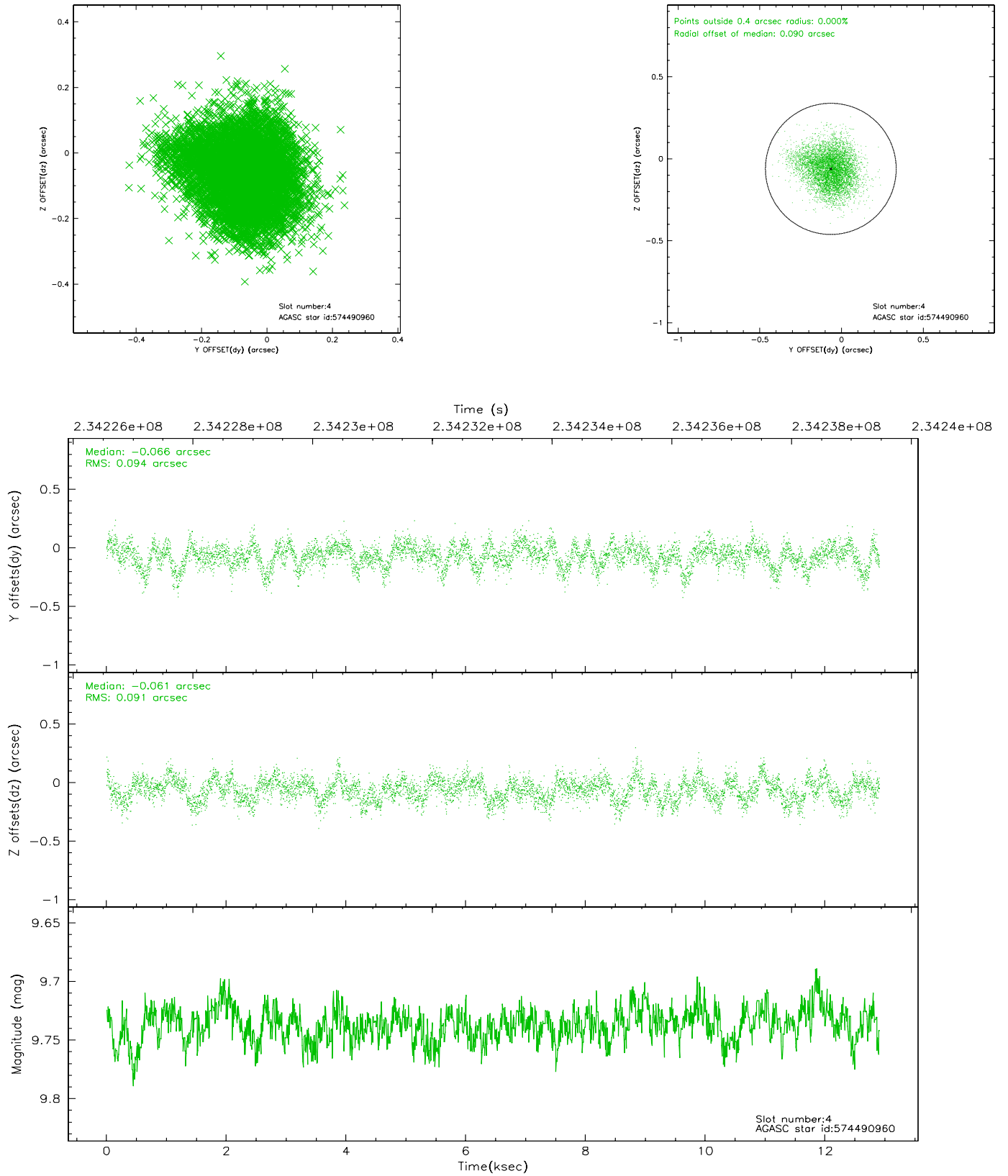
slot	status	id	mag	n_pts	med_dy	med_dz	dr1	dr2	ra	dec	mean_y	mean_z
0	FID	ACIS-S-2	7.10	3149	-0.042	0.011	0.007	0.011	0.000000	0.000000	-759.68	-1732.10
1	FID	ACIS-S-4	7.20	3148	0.039	0.017	0.005	0.009	0.000000	0.000000	2153.47	176.05
2	FID	ACIS-S-5	7.23	3149	-0.029	-0.019	0.006	0.011	0.000000	0.000000	-1812.06	170.05
3	GUIDE	574489568	9.76	6293	-0.069	-0.036	0.113	0.181	147.223974	69.438157	-1498.83	-1920.33
4	GUIDE	574490960	9.74	6286	-0.066	-0.061	0.141	0.224	148.185918	69.658768	-2159.92	-633.17
5	GUIDE	574491280	9.36	6295	-0.055	0.011	0.097	0.158	148.611567	69.450135	-1361.11	-171.99
6	GUIDE	574497600	10.44	6284	0.083	-0.013	0.187	0.302	147.824120	68.451903	2115.30	-1536.79
7	GUIDE	574496360	9.46	6295	0.115	0.108	0.121	0.198	150.806604	68.529829	2151.92	2409.61

2.4 Star Slots

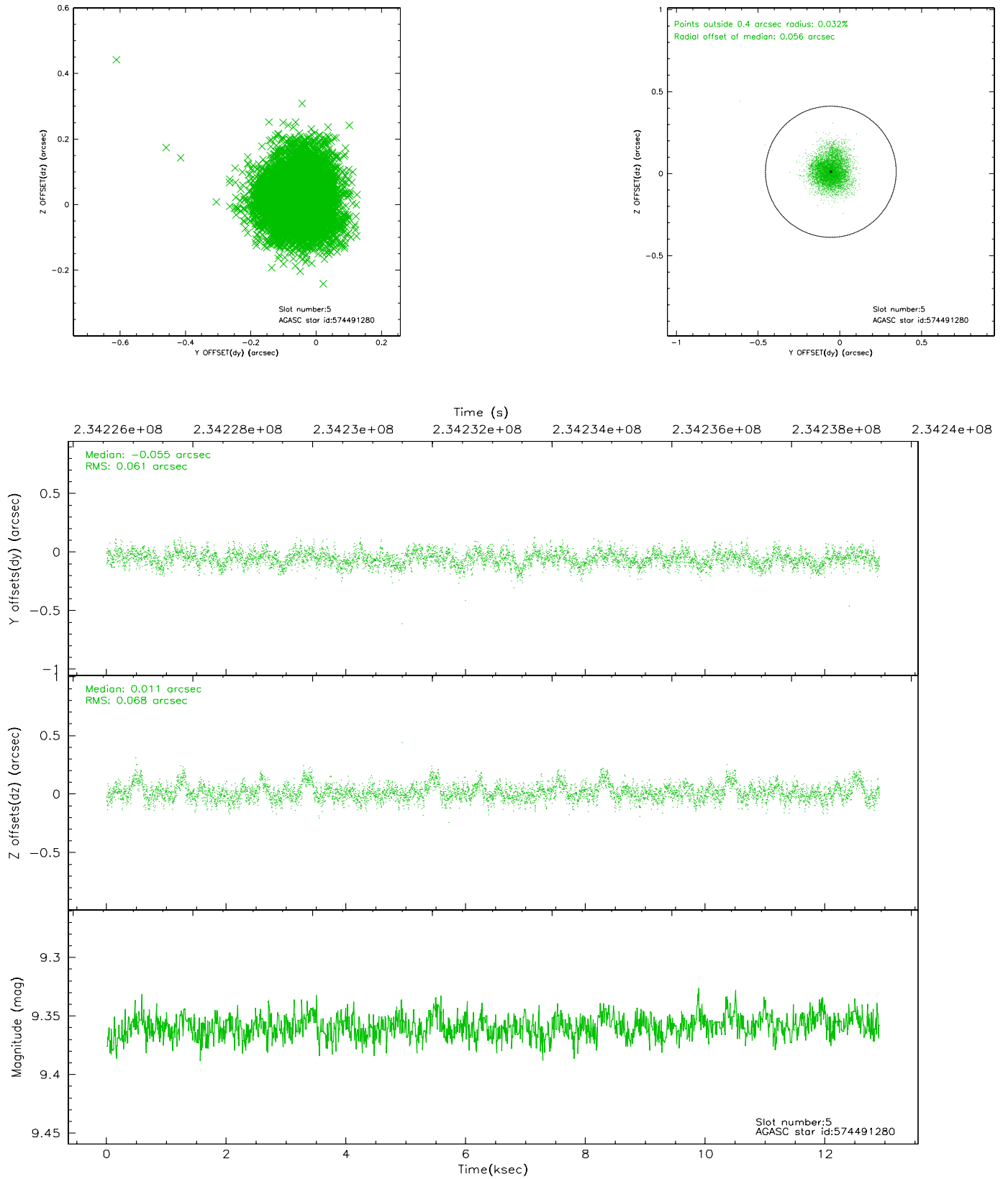
2.4.1 Slot 3



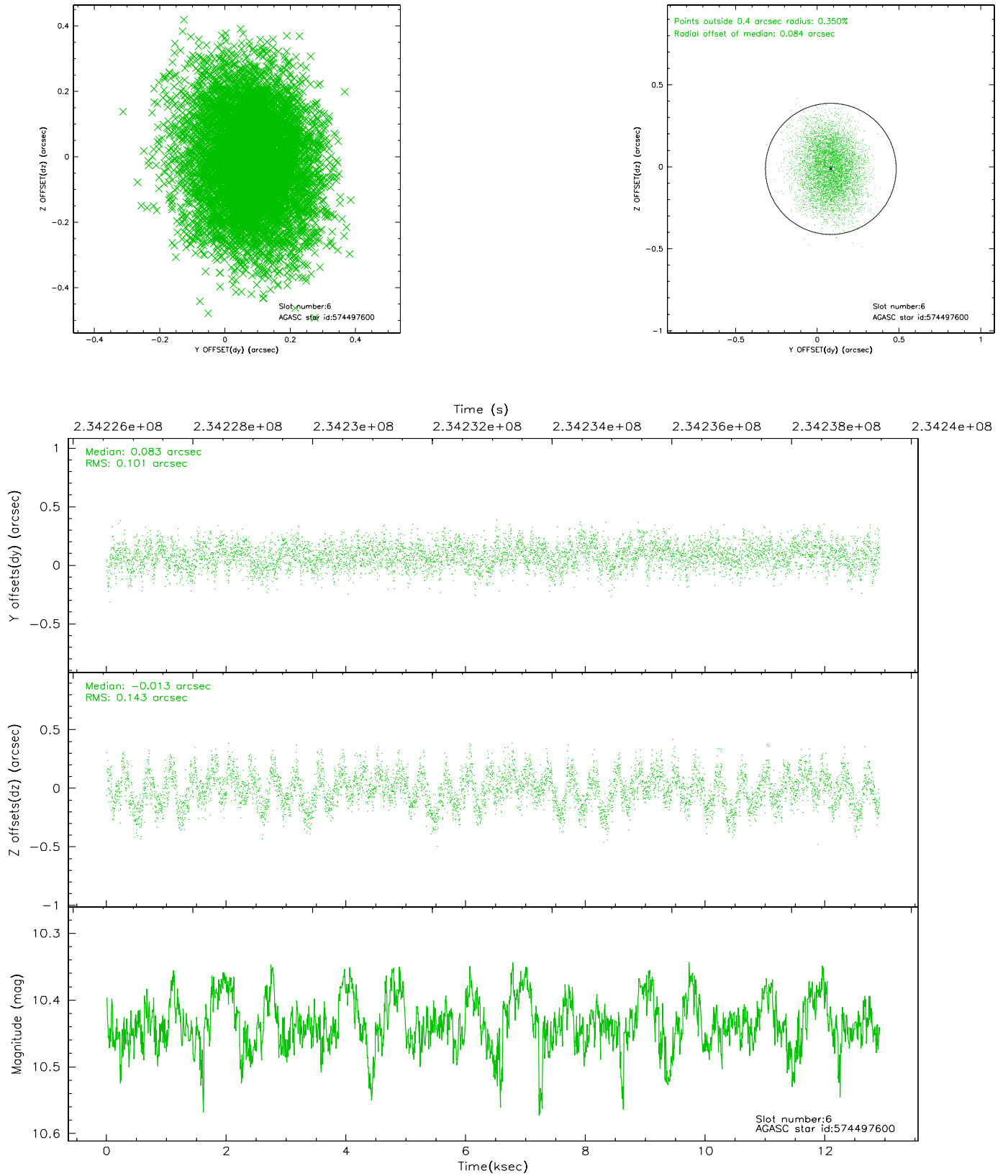
2.4.2 Slot 4



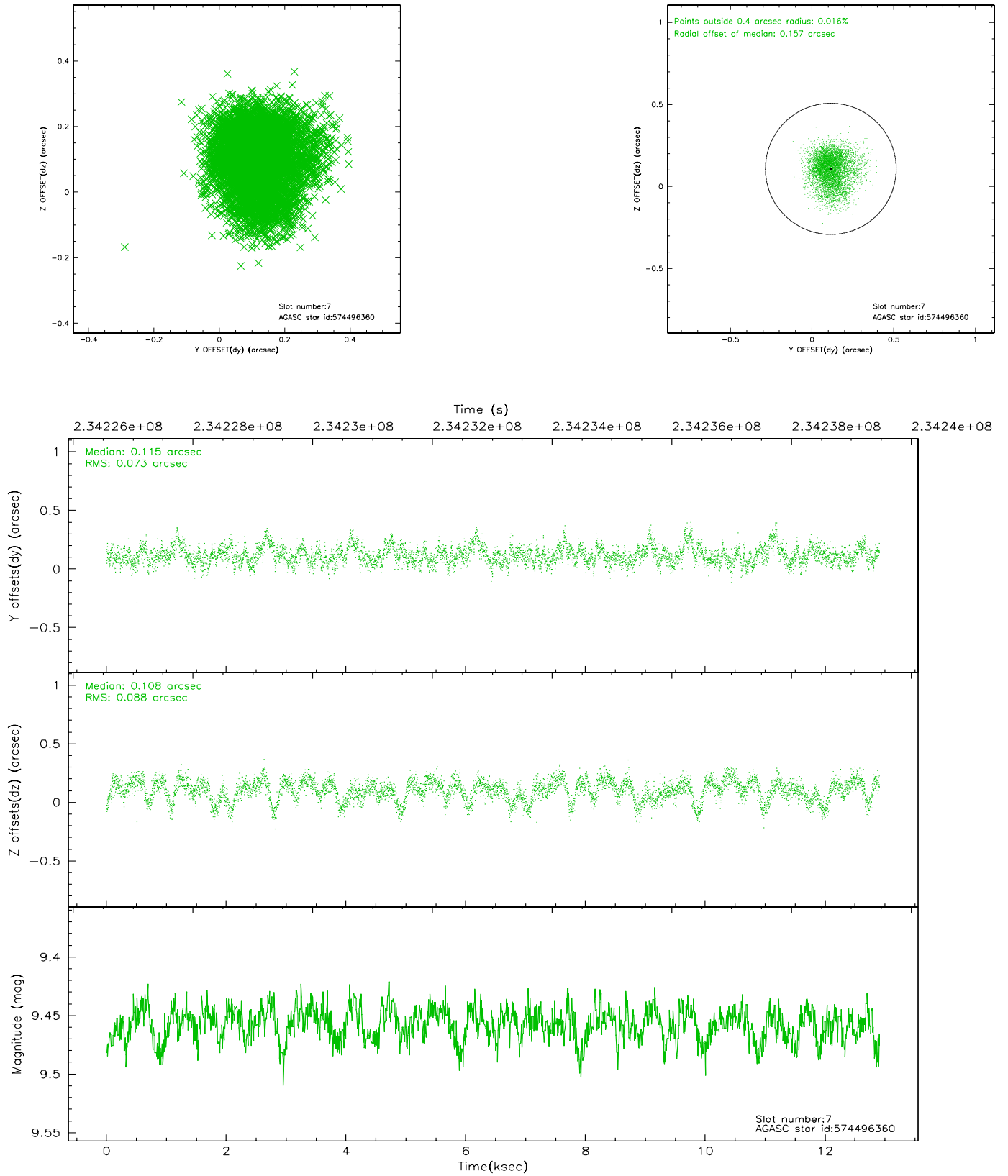
2.4.3 Slot 5



2.4.4 Slot 6

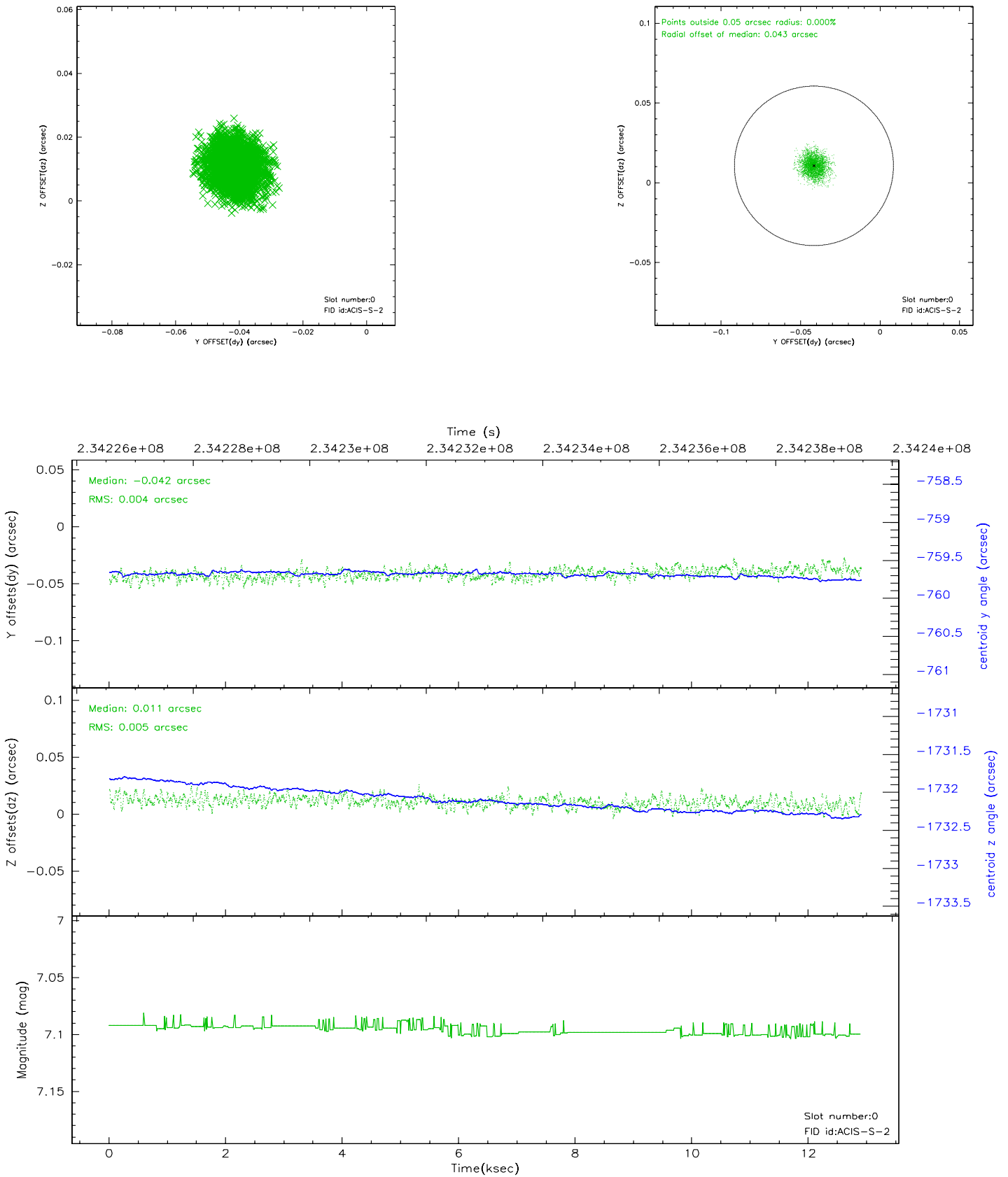


2.4.5 Slot 7

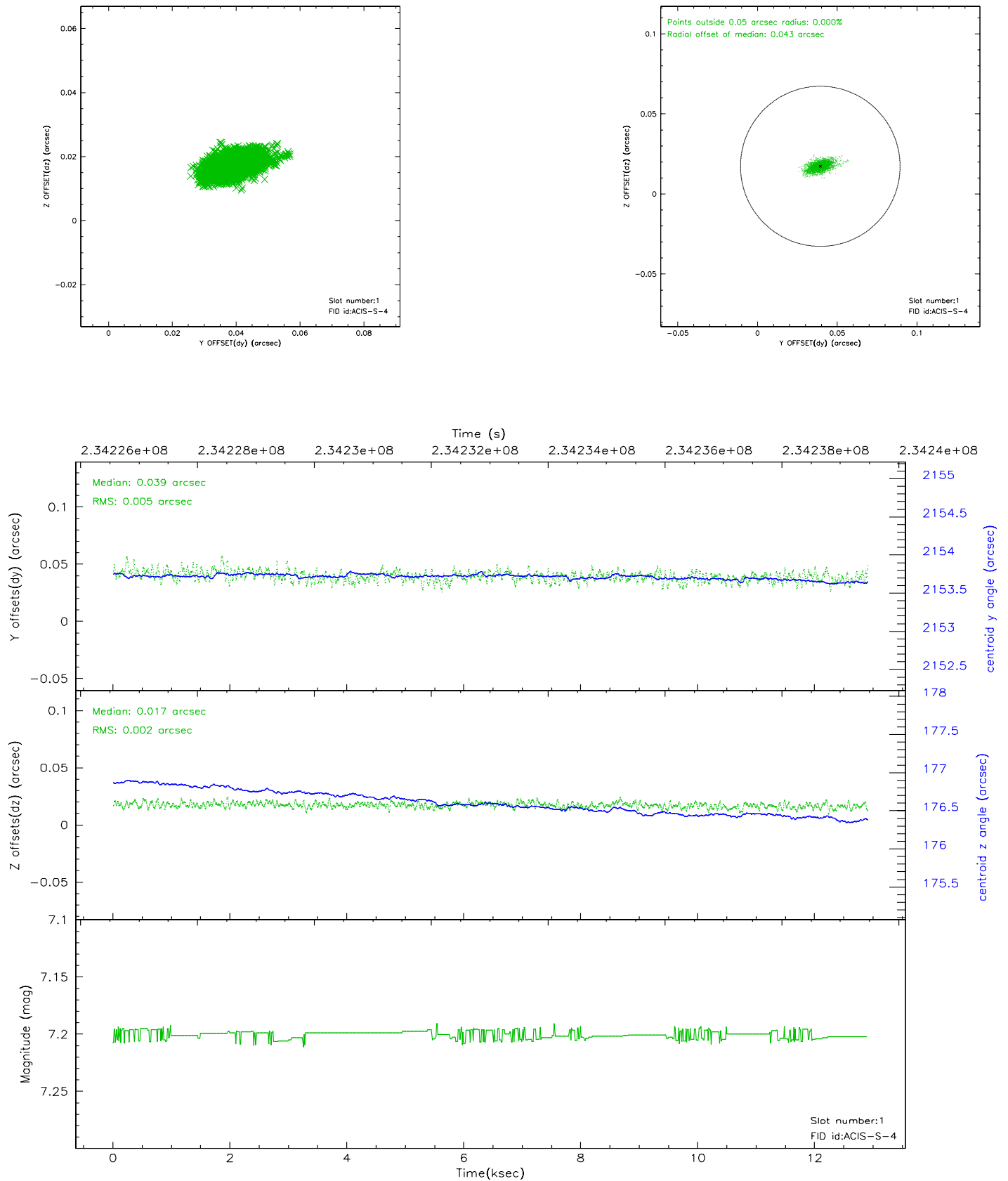


2.5 FID Slots

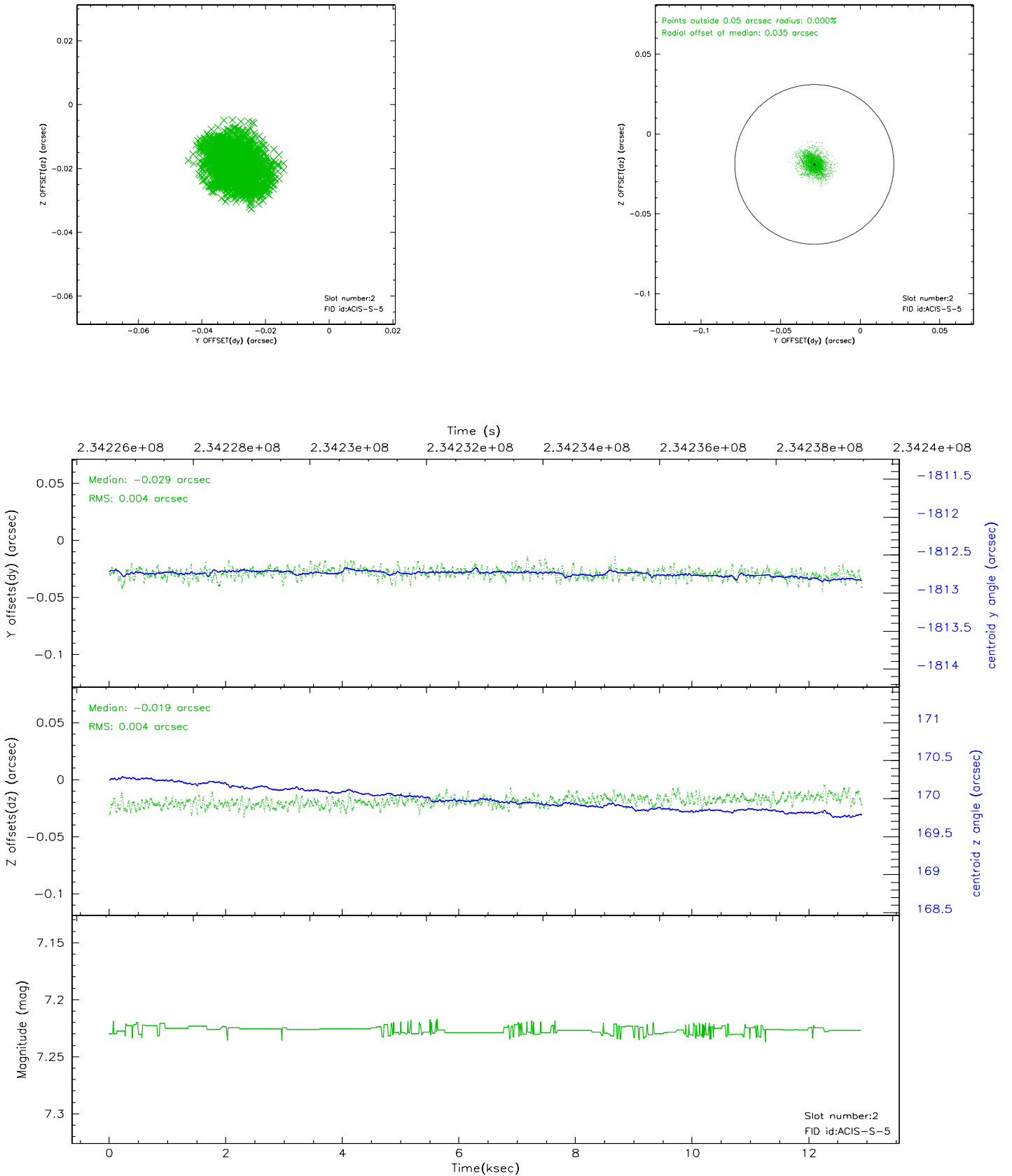
2.5.1 Slot 0



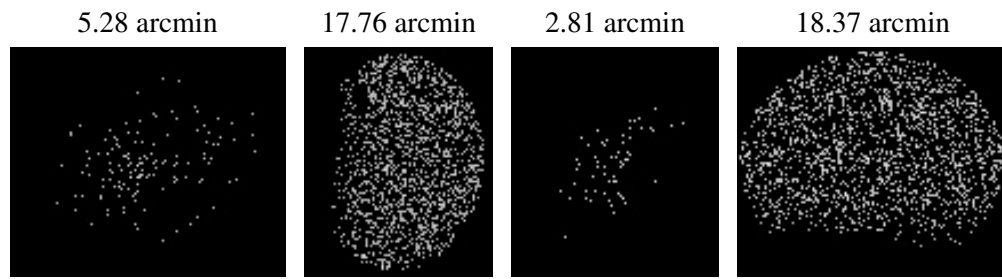
2.5.2 Slot 1



2.5.3 Slot 2



3 Point Sources



A Summary

A.1 Status

V&V Scientist	Beth Sundheim
V&V Date (YYYY-MM-DD)	2006.03.08
V&V Edition	1
V&V Disposition and Status	OK
V&V Charge Time	11.95839

A.2 Comments