

V&V Reference Report

L2 ASCDS Version : 8.5.1.1

Observation 5934 - L2 Version 6
Chandra X-Ray Center

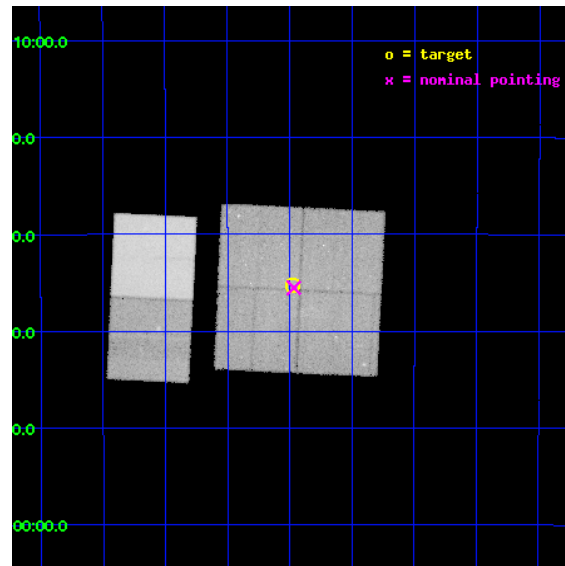
L2 Processing Date : Feb 15 2013

Contents

1	Front	2
2	OBI	3
2.1	OBI	3
2.1.1	Images	3
2.1.2	Bias	3
2.1.3	Parameters	4
2.1.4	Events	4
2.2	Compared Parameters	5
2.3	Aspect	6
2.4	Star Slots	9
2.4.1	Slot 3	9
2.4.2	Slot 4	10
2.4.3	Slot 5	11
2.4.4	Slot 6	12
2.4.5	Slot 7	13
2.5	FID Slots	14
2.5.1	Slot 0	14
2.5.2	Slot 1	15
2.5.3	Slot 2	16
A	Summary	17
A.1	Status	17
A.2	Comments	17

1 Front

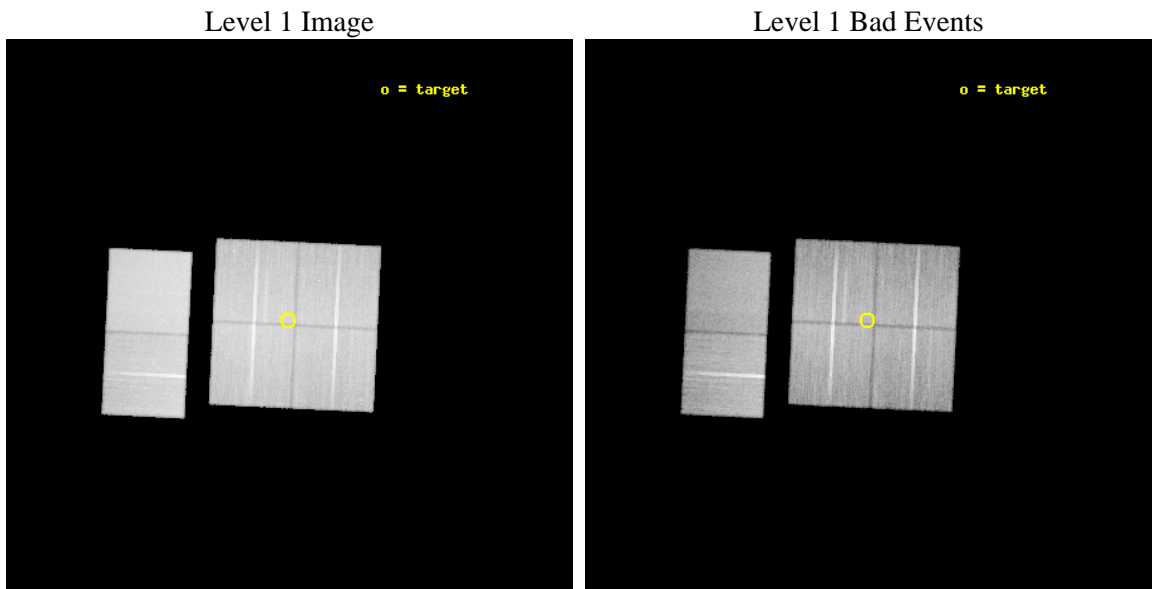
seq_num	600453	Sequence number
obs_id	5934	Observation id
title	Galactic Bulge Chandra-HST Survey	Proposal title
observer	Professor Johnathan Grindlay	Principal investigator
object	Limiting Window	Source name
dtcycle	0	
cycle	P	events from which exps? Prim/Second/Both
ra_targ	267.86875	Observer's specified target RA [deg]
dec_targ	-29.588	Observer's specified target Dec [deg]
ra_nom	267.86691994967	Nominal RA [deg]
dec_nom	-29.592360511395	Nominal Dec [deg]
roll_nom	272.74741712172	Nominal Roll [deg]
revision	6	Processing version of data
ontime	41055.999847054	Sum of GTIs [s]
livetime	40536.124056036	Livetime [s]
ontime0	41055.999847054	Sum of GTIs [s]
ontime1	41055.999847054	Sum of GTIs [s]
ontime2	41052.758946419	Sum of GTIs [s]
ontime3	41055.999847054	Sum of GTIs [s]
ontime6	41052.758866757	Sum of GTIs [s]
ontime7	41055.999847054	Sum of GTIs [s]
l2events	479480	Number of level 2 events



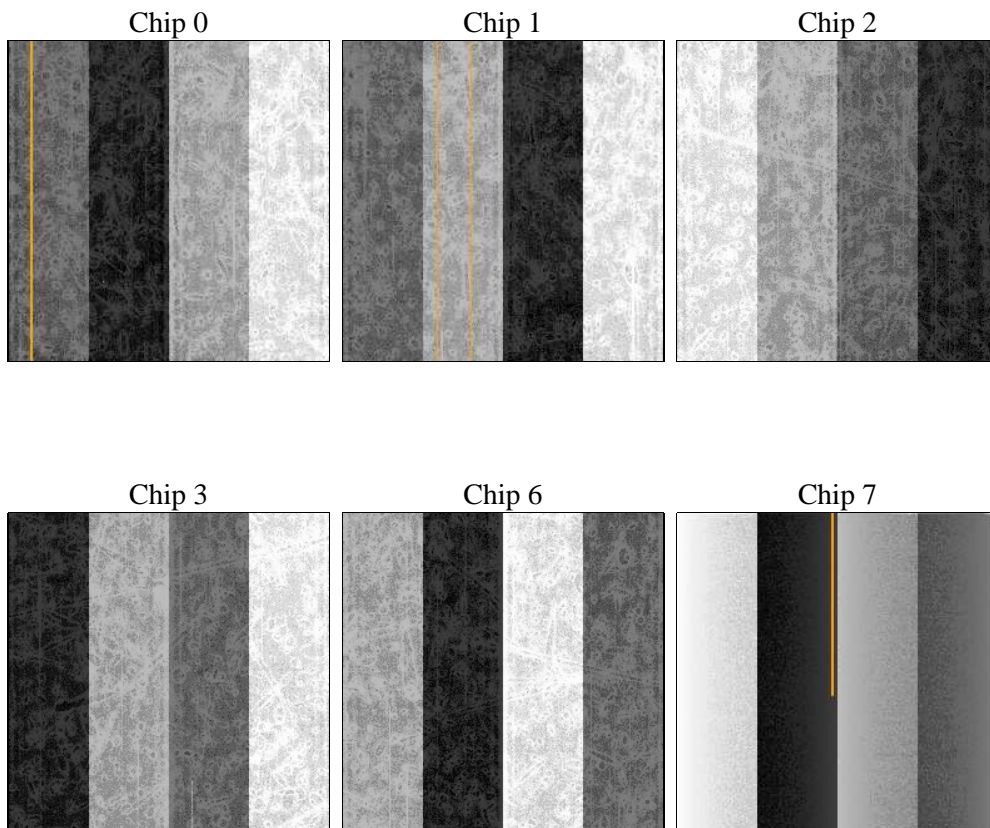
2 OBI

2.1 OBI

2.1.1 Images



2.1.2 Bias



2.1.3 Parameters

obi_num	0	Obi number	sched_exp_time	56000.000000	[s] Scheduled observation exposure time
ascdsver	8.5.1.1	Processing system revision	ontime	41055.999847054	Sum of GTIs [s]
caldsver	4.5.5	 	ontime0	41055.999847054	Sum of GTIs [s]
date	2013-02-15T09:41:37	Date and time of file creation	ontime1	41055.999847054	Sum of GTIs [s]
revision	6	Processing version of data	ontime2	41052.758946419	Sum of GTIs [s]
			ontime3	41055.999847054	Sum of GTIs [s]
			ontime6	41052.758866757	Sum of GTIs [s]
			ontime7	41055.999847054	Sum of GTIs [s]
			l1events	2212220	Number of level 1 events

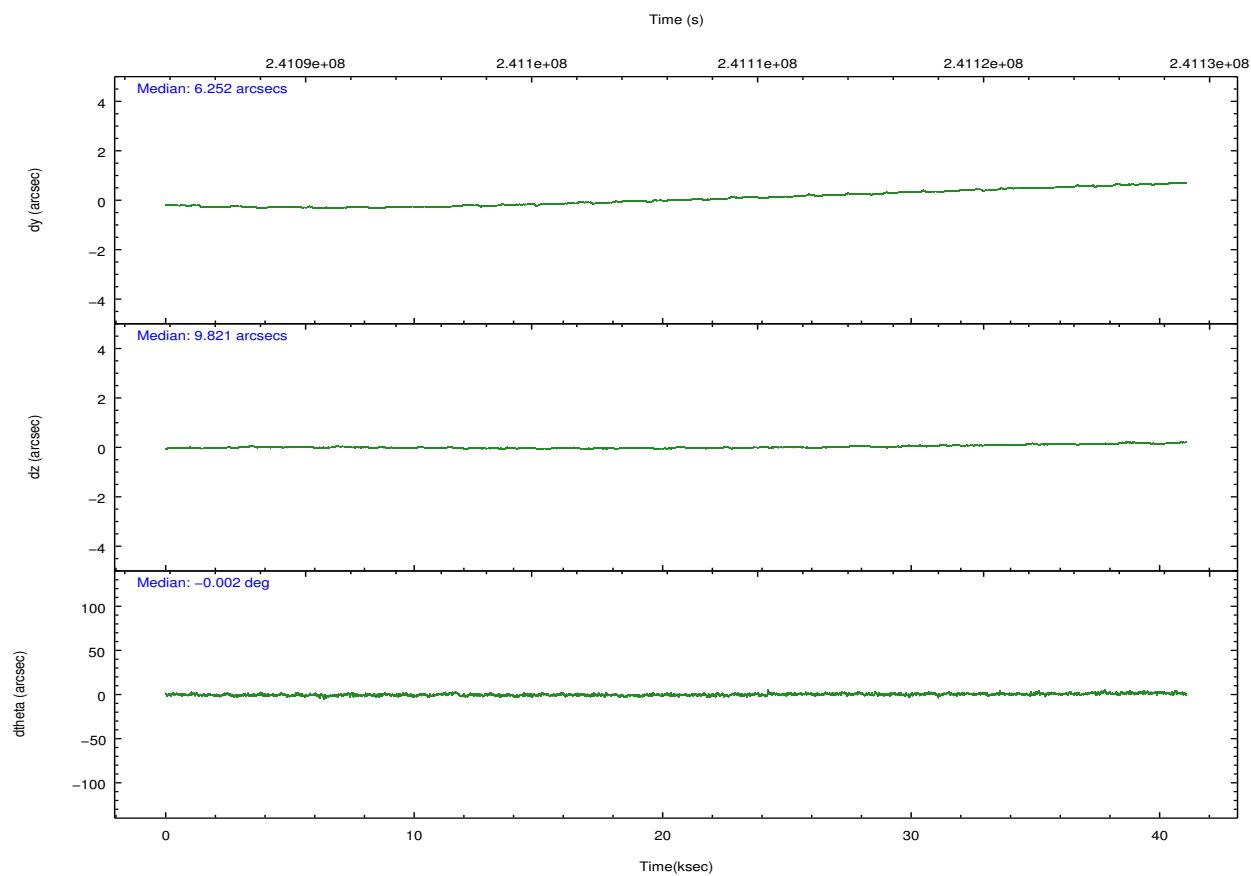
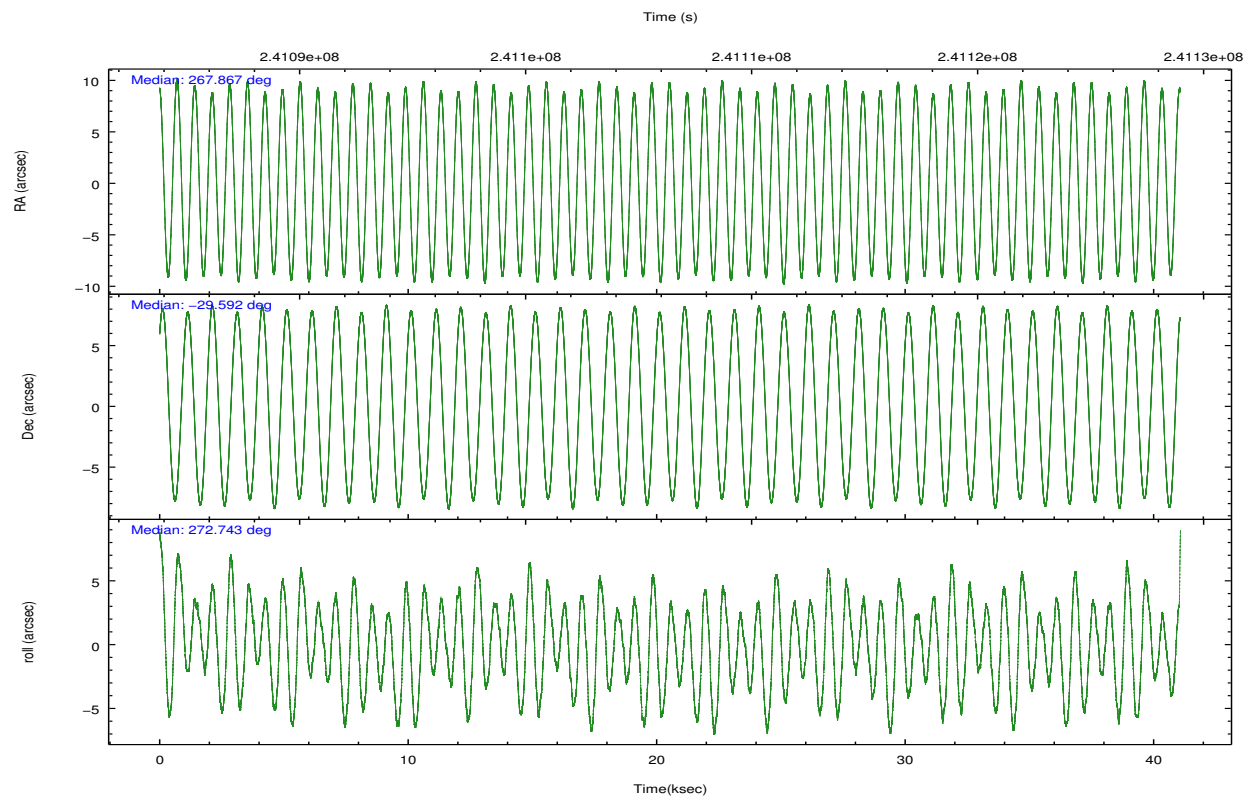
2.1.4 Events

	ccd 0	ccd 1	ccd 2	ccd 3	ccd 6	ccd 7		ccd 0	ccd 1	ccd 2	ccd 3	ccd 6	ccd 7
level 1 events	326137	332101	364802	354835	373827	460518	grade 0 events	34430	30983	37007	33469	30025	22122
rejected events	261268	268313	298398	292555	312795	254600		10%	9%	10%	9%	8%	4%
rejected %	80%	80%	81%	82%	83%	55%	grade 1 events	279	204	292	282	260	463
								0%	0%	0%	0%	0%	0%
							grade 2 events	12460	13046	11934	10904	12442	42717
								3%	3%	3%	3%	3%	9%
							grade 3 events	4559	4550	4338	4399	4230	18403
								1%	1%	1%	1%	1%	3%
							grade 4 events	4298	4553	4757	4275	4215	18541
								1%	1%	1%	1%	1%	4%
							grade 5 events	12308	13508	12044	14104	14958	41370
								3%	4%	3%	3%	4%	8%
							grade 6 events	9165	10708	8411	9277	10176	104287
								2%	3%	2%	2%	2%	22%
							grade 7 events	248638	254549	286019	278125	297521	212615
								76%	76%	78%	78%	79%	46%

2.2 Compared Parameters

Parameter	Planned	Actual	Parameter	Planned	Actual
Instrument	ACIS	ACIS	Obspar format version number	7	7
Detector	ACIS-012367	ACIS-012367	Obspar file type	PREDICTED	ACTUAL
Grating	NONE	NONE	Obspar update status	OVERRIDE	OVERRIDE
Data mode	FAINT	FAINT	Number of optional ACIS chips dropped	0	0
Observation mode	POINTING	POINTING	On-chip summing requested	N	N
[deg] Pointing RA	267.849772	267.8669199496687	Subarray requested	NONE	NONE
[deg] Pointing Dec	-29.569375	-29.59236051139508	Alternating exposures requested	N	N
[deg] Pointing Roll	272.530261	272.74741712172	[s] Primary exposure time	3.2	3.2
[mm] SIM focus pos	-0.7809083437167272	-0.7809083437167272			
[mm] SIM defocus	0.001439854621705816	0.001439854621705816			
[mm] SIM translation stage pos	-233.5874344608287	-233.5874344608287			
[mm] SIM translation stage offset	-0.005028630603106876	-0.005028630603106876			
[s] Observation start time (MET)	241085856.184000	241085856.184			
Observation start date	2005-08-22T08:16:32	2005-08-22T08:17:36			
[s] Observation end time (MET)	241126937.000000	241126937			
Observation end date	2005-08-22T19:42:17	2005-08-22T19:42:16			
Read mode	TIMED	TIMED			

2.3 Aspect

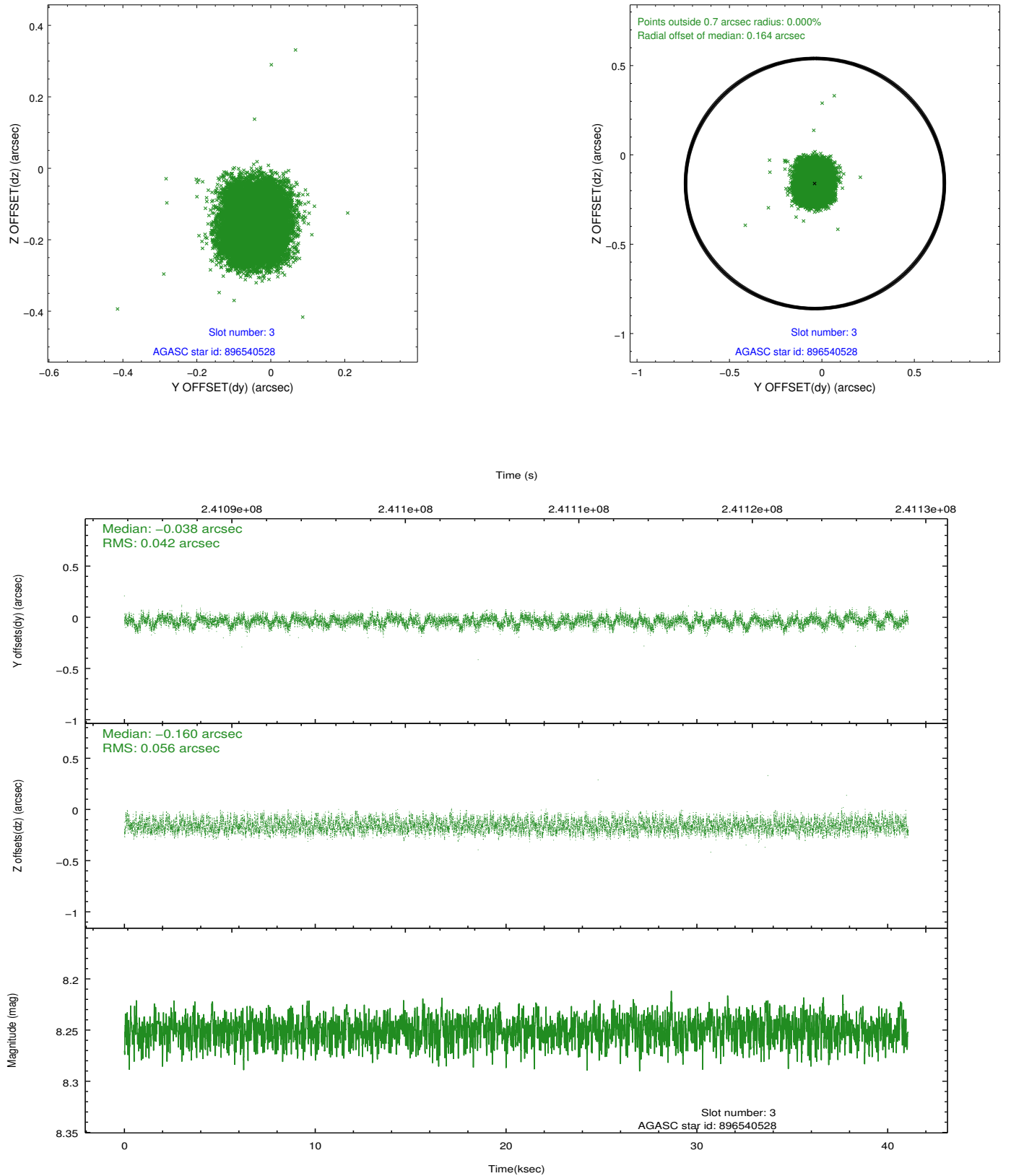


Slot Statistics

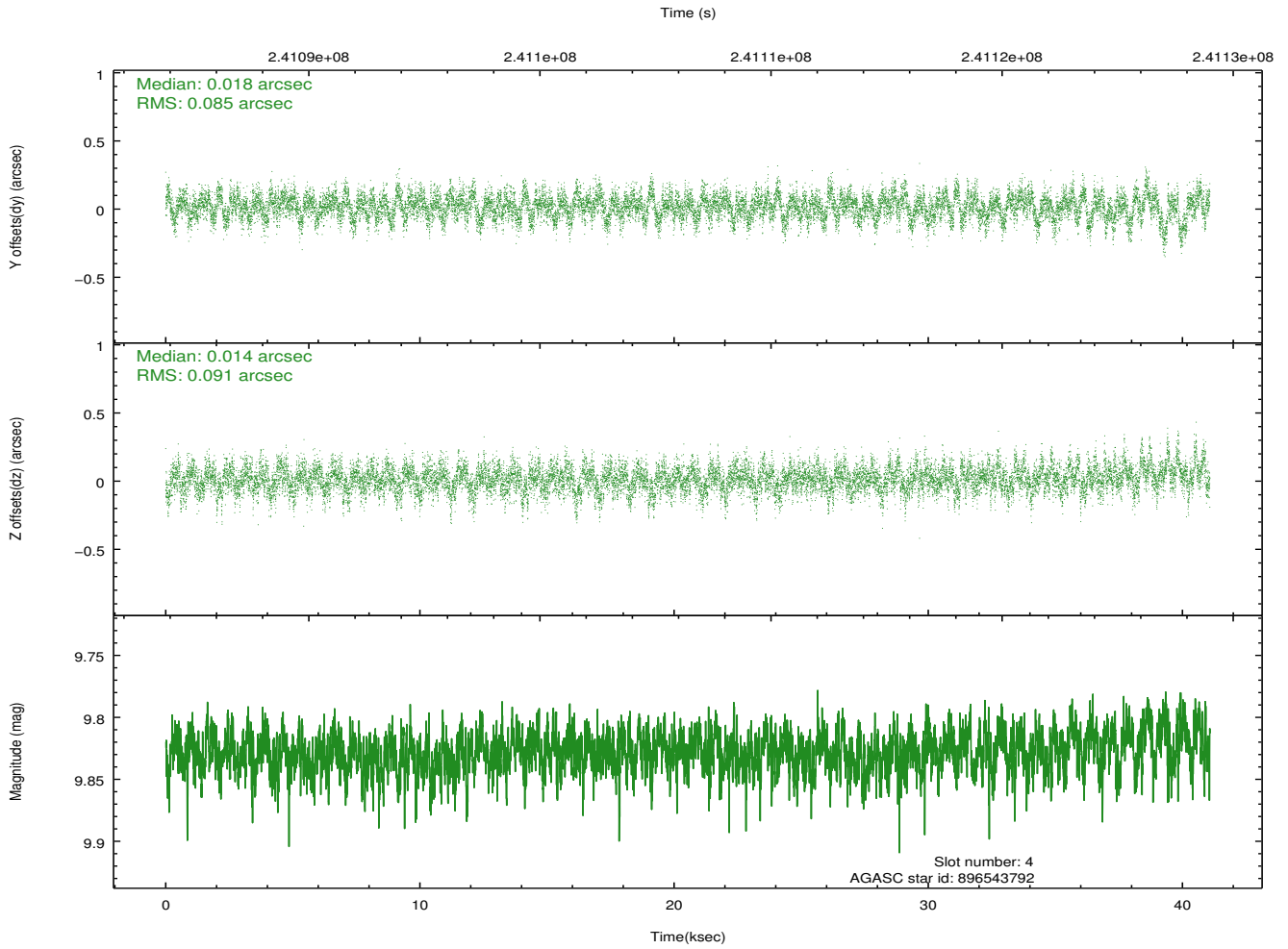
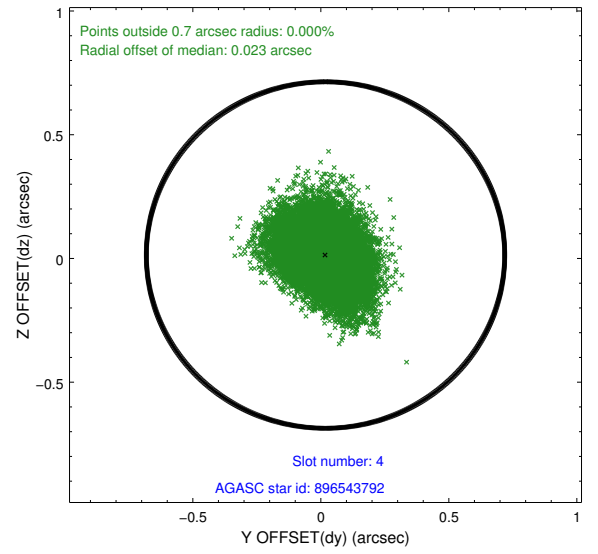
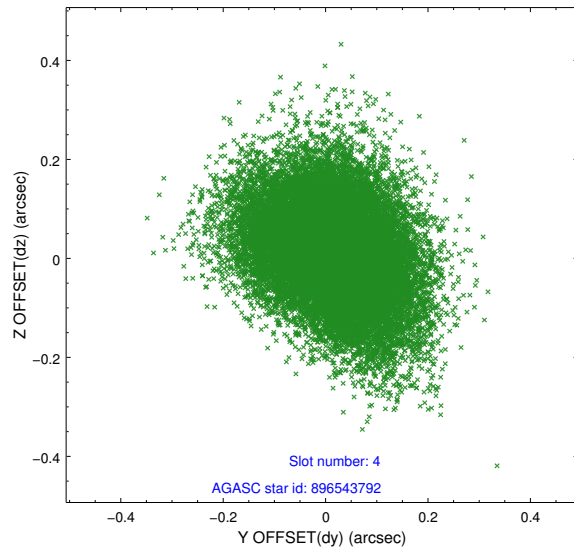
slot	status	id	mag	n_pts	med_dy	med_dz	dr1	dr2	ra	dec	mean_y	mean_z
0	FID	ACIS-I-1	7.25	10019	-0.048	0.069	0.013	0.020	0.000000	0.000000	933.33	-833.24
1	FID	ACIS-I-2	7.14	10018	-0.117	-0.065	0.009	0.015	0.000000	0.000000	-760.82	-839.82
2	FID	ACIS-I-4	7.18	10016	0.066	0.063	0.012	0.023	0.000000	0.000000	2153.33	1066.54
3	GUIDE	896540528	8.25	20034	-0.038	-0.160	0.076	0.117	267.368305	-29.314773	-978.73	-1469.42
4	GUIDE	896543792	9.83	20024	0.018	0.014	0.131	0.220	267.148052	-29.957989	1308.24	-2248.47
5	GUIDE	898247688	8.66	20034	-0.204	0.167	0.078	0.127	268.426687	-29.012154	-1919.33	1902.95
6	GUIDE	898248800	8.22	20034	-0.028	-0.108	0.060	0.095	267.977609	-29.931731	1321.27	341.06
7	GUIDE	967053960	9.24	20027	0.257	0.085	0.084	0.138	268.185736	-30.091336	1925.59	962.83

2.4 Star Slots

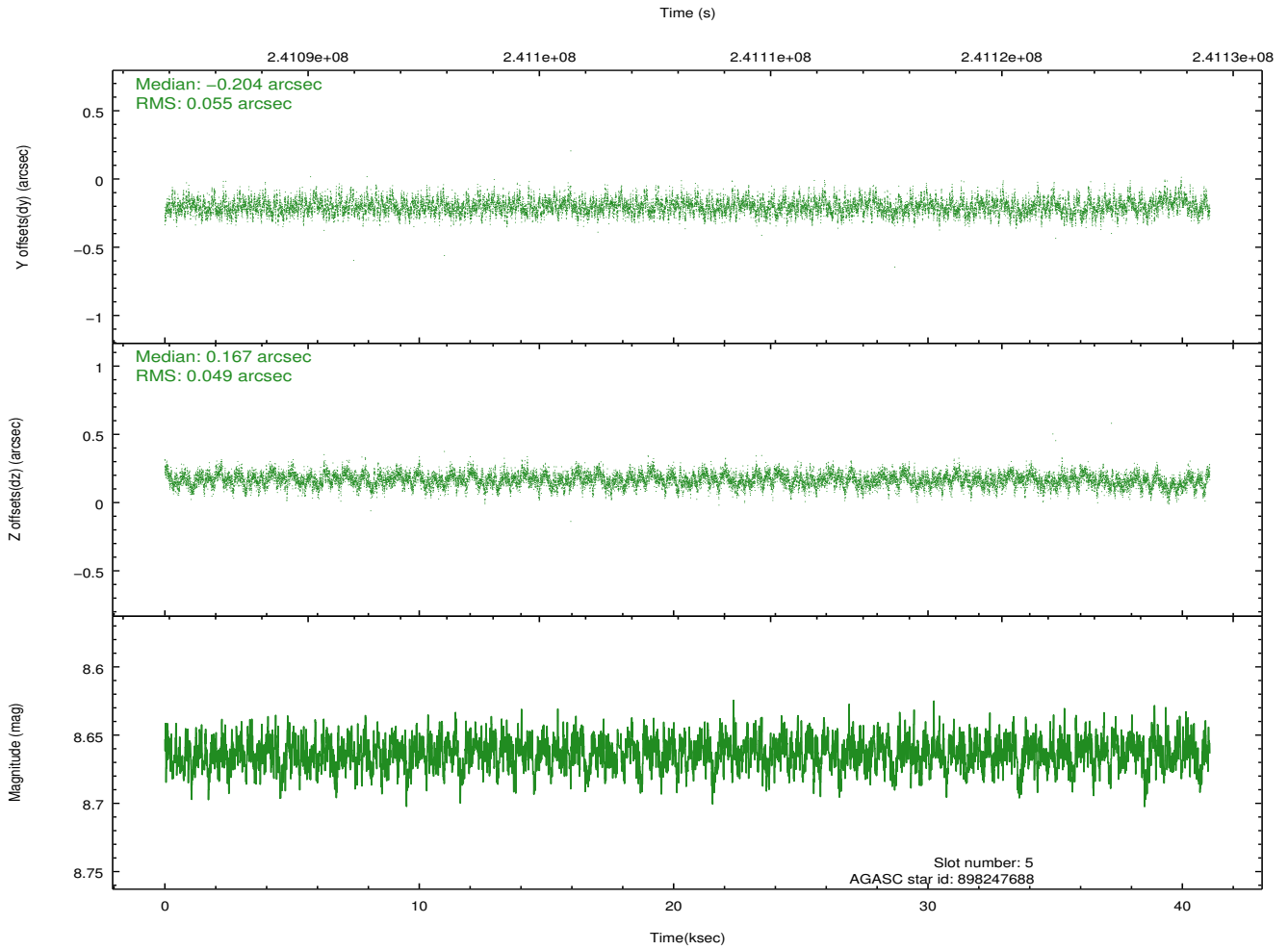
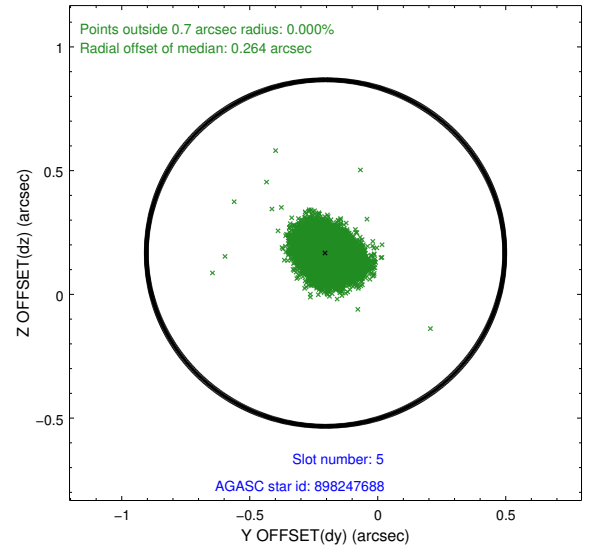
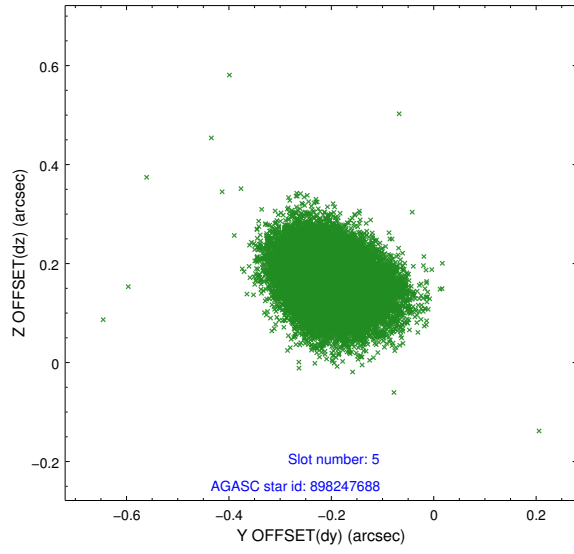
2.4.1 Slot 3



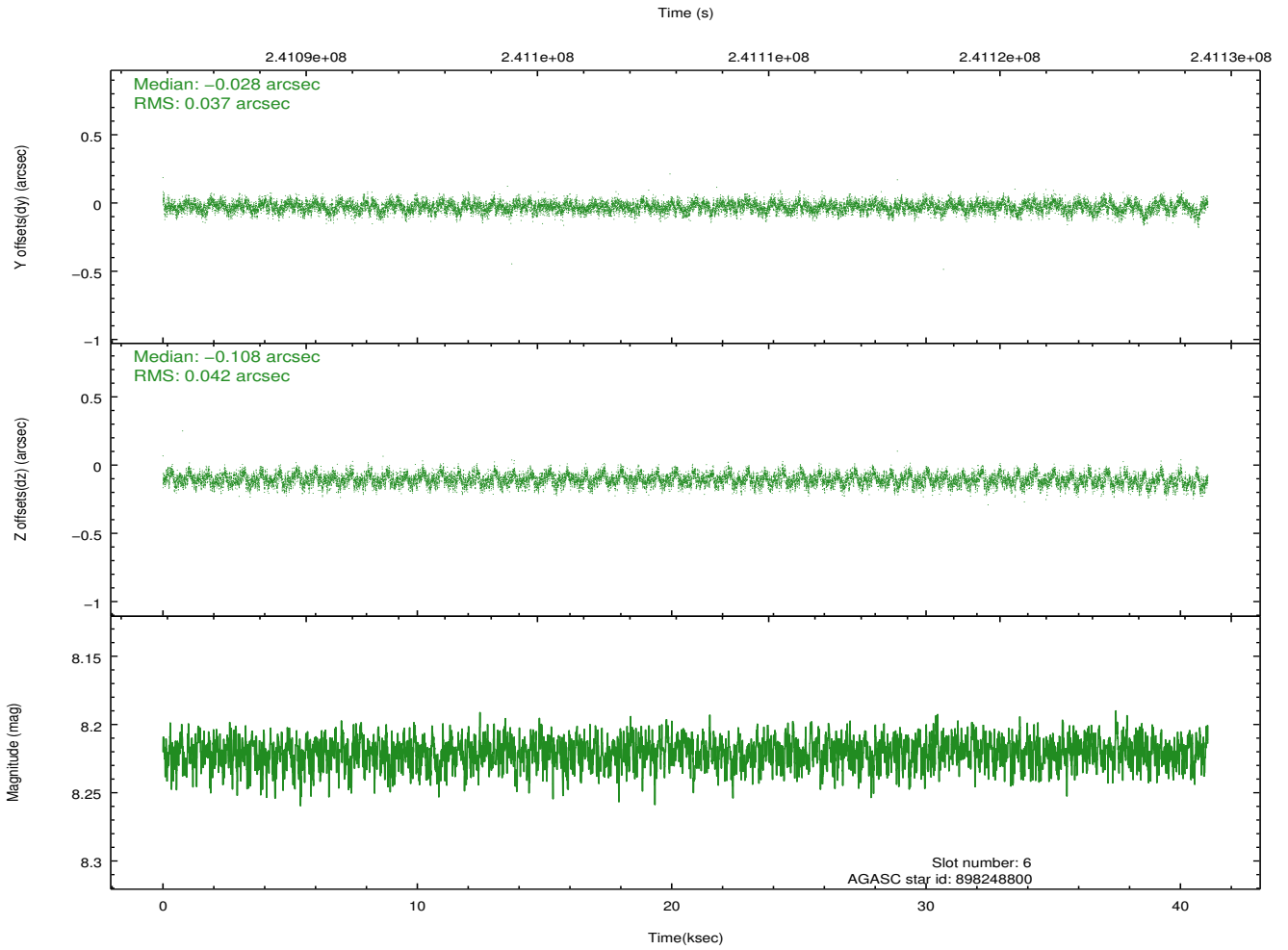
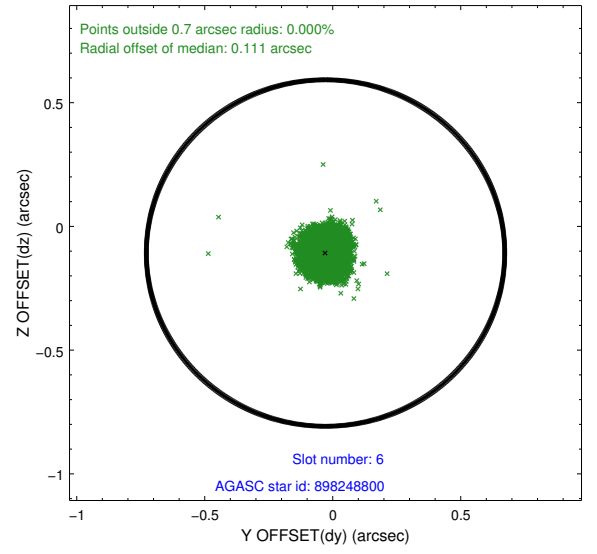
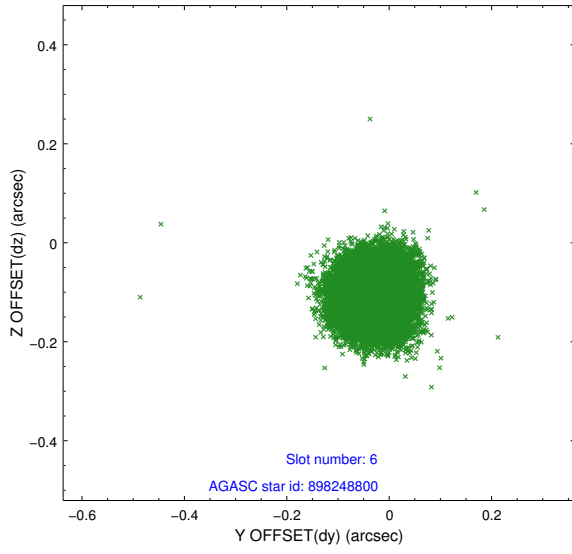
2.4.2 Slot 4



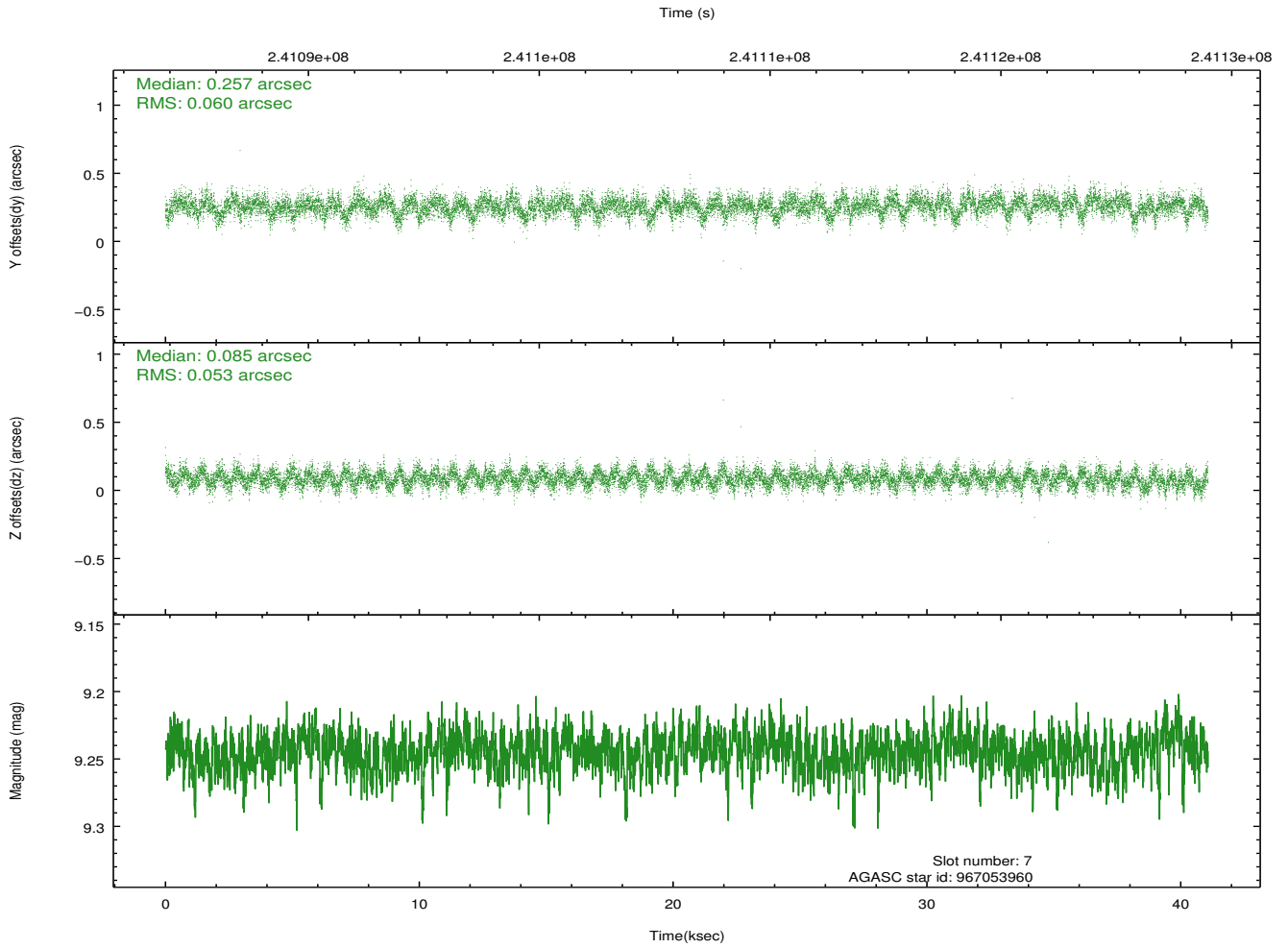
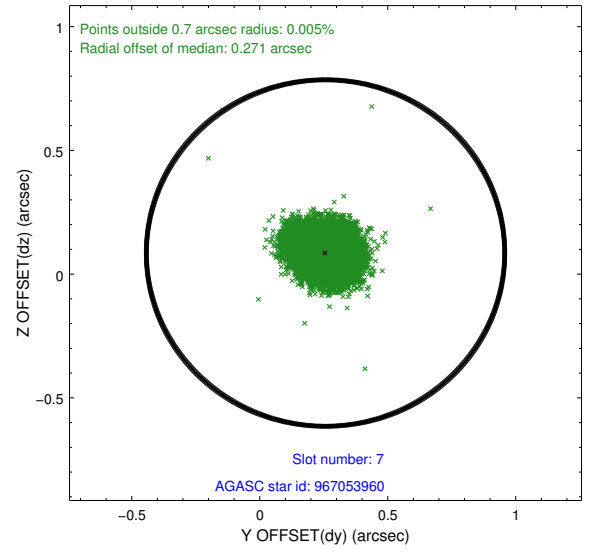
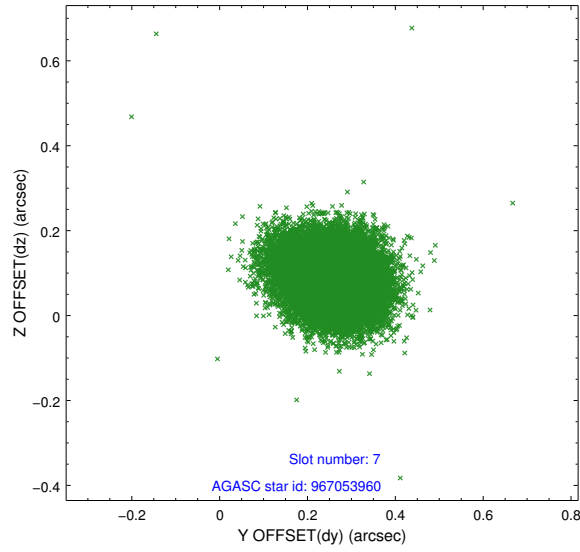
2.4.3 Slot 5



2.4.4 Slot 6

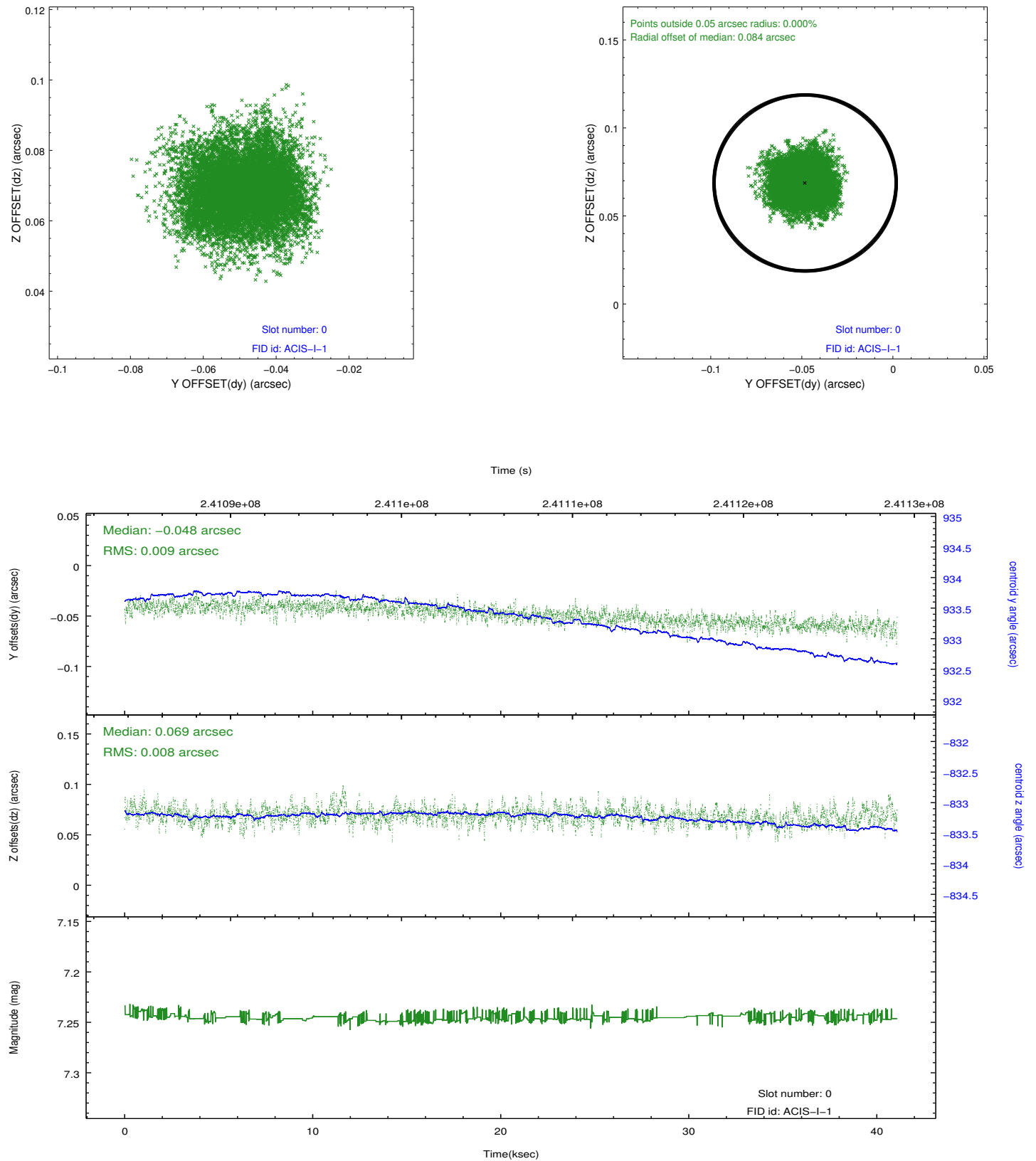


2.4.5 Slot 7

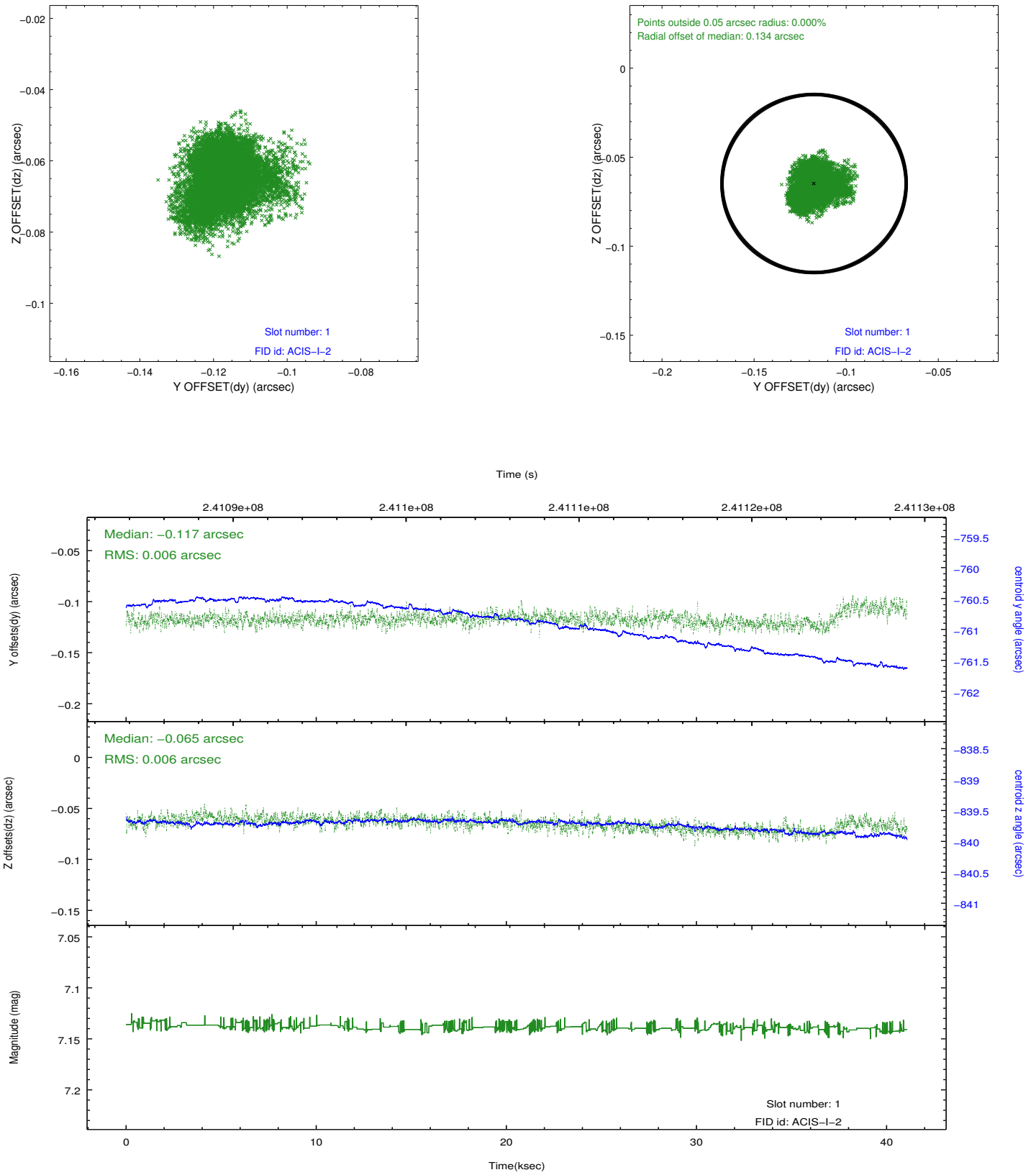


2.5 FID Slots

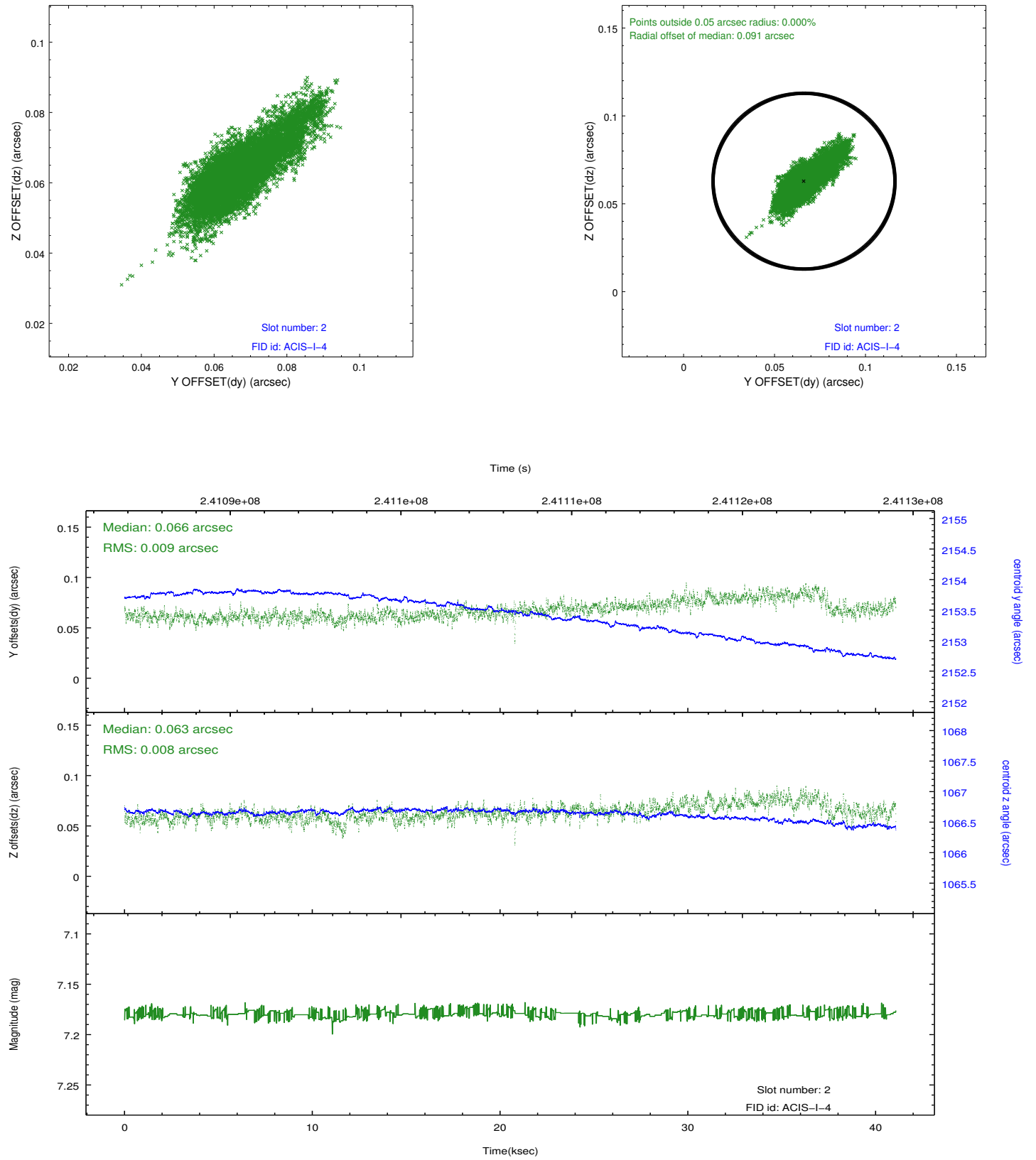
2.5.1 Slot 0



2.5.2 Slot 1



2.5.3 Slot 2



A Summary

A.1 Status

V&V Scientist	Jen Lauer
V&V Date (YYYY-MM-DD)	2013.02.19
V&V Edition	1
V&V Disposition and Status	OK
V&V Charge Time	41.0528

A.2 Comments

This observation was interrupted by safing of the science instruments onboard Chandra due to high solar radiation environment. The observation was interrupted at 2005-08-22T19:40:20. Due to a high radiation environment, the instruments were safed and the observation terminated early. This observation has been reprocessed so that the aspect solution correctly handles the instrument safing and maneuver activities at the end of the observation.

=====

Joint Proposal: HST