

# V&V Reference Report

## L2 ASCDS Version : 7.6.7

Observation 5921 - L2 Version 002  
Chandra X-Ray Center

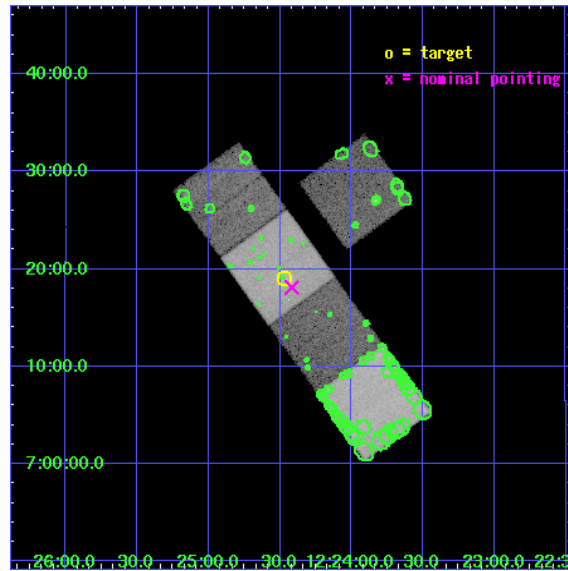
L2 Processing Date: Mar 2 2006

## Contents

<b>1</b>	<b>Front</b>	<b>2</b>
<b>2</b>	<b>OBI</b>	<b>3</b>
2.1	OBI . . . . .	3
2.1.1	Images . . . . .	3
2.1.2	Bias . . . . .	3
2.1.3	Parameters . . . . .	4
2.1.4	Events . . . . .	4
2.2	Compared Parameters . . . . .	5
2.3	Aspect . . . . .	6
2.4	Star Slots . . . . .	9
2.4.1	Slot 3 . . . . .	9
2.4.2	Slot 4 . . . . .	10
2.4.3	Slot 5 . . . . .	11
2.4.4	Slot 6 . . . . .	12
2.4.5	Slot 7 . . . . .	13
2.5	FID Slots . . . . .	14
2.5.1	Slot 0 . . . . .	14
2.5.2	Slot 1 . . . . .	15
2.5.3	Slot 2 . . . . .	16
<b>3</b>	<b>Point Sources</b>	<b>17</b>
<b>A</b>	<b>Summary</b>	<b>18</b>
A.1	Status . . . . .	18
A.2	Comments . . . . .	18

# 1 Front

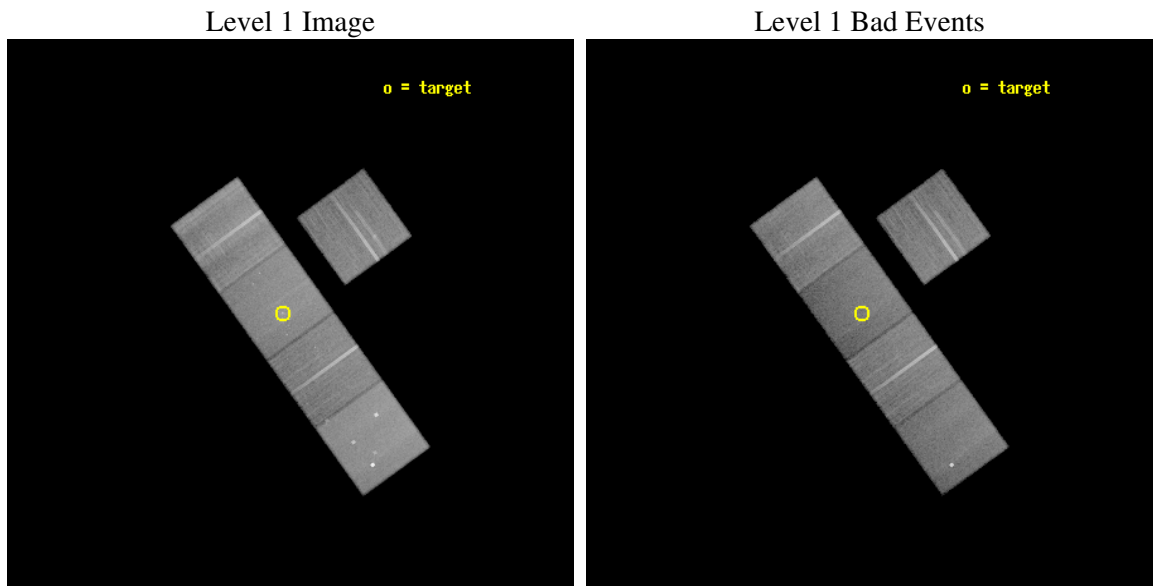
seq_num	600440
obs_id	5921
title	Low Mass X-ray Binaries and Globular Clusters in the Early-Type Galaxy NGC 4365
observer	Mr GREGORY SIVAKOFF
object	NGC4365
dtcycle	0
cycle	P
ra_targ	186.117917
dec_targ	7.317722
ra_nom	186.10429779201
dec_nom	7.3019866556685
roll_nom	234.12844240824
revision	2
ontime	40033.399923027
livetime	39510.334080872
ontime3	40027.117942542
ontime5	40033.399923027
ontime6	40030.258932739
ontime7	40033.399923027
ontime8	40030.258932769
l2events	357293



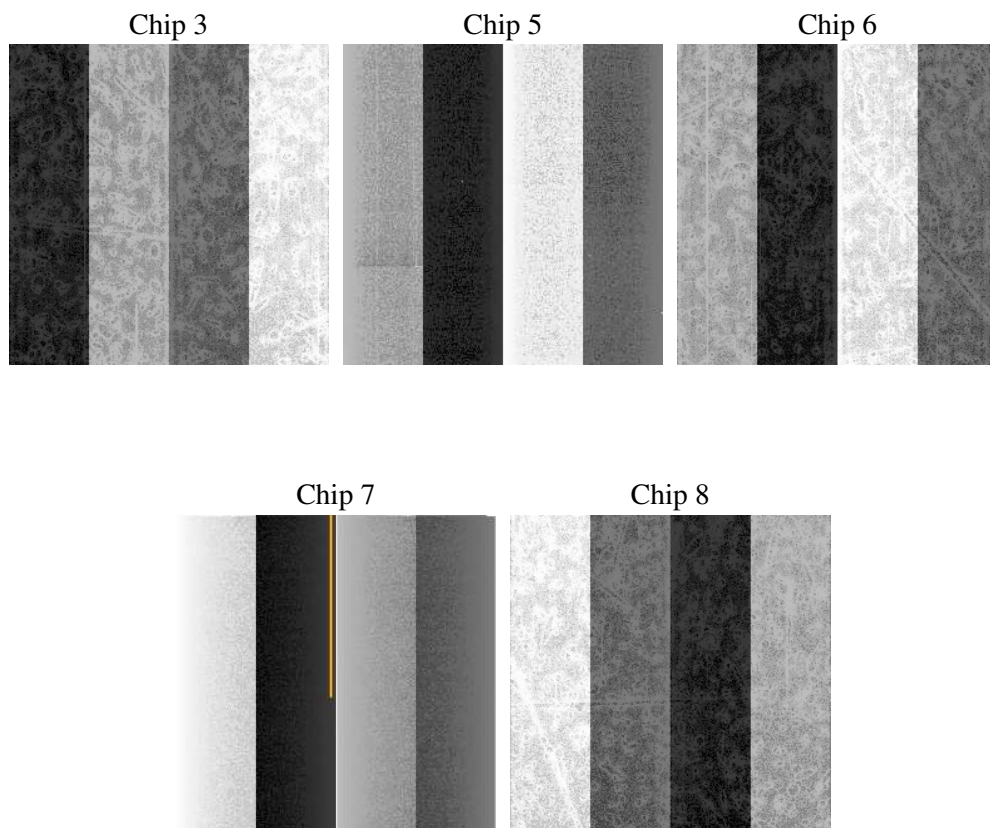
## 2 OBI

### 2.1 OBI

#### 2.1.1 Images



#### 2.1.2 Bias



### 2.1.3 Parameters

obi_num	0
ascdsver	7.6.7
caldbver	3.2.1
date	2006-03-02T11:11:42
revision	2

sched_exp_time	40000.000000
ontime	40038.493552417
ontime3	40032.211571932
ontime5	40038.493552417
ontime6	40035.352562129
ontime7	40038.493552417
ontime8	40035.352562159
l1events	1499642

### 2.1.4 Events

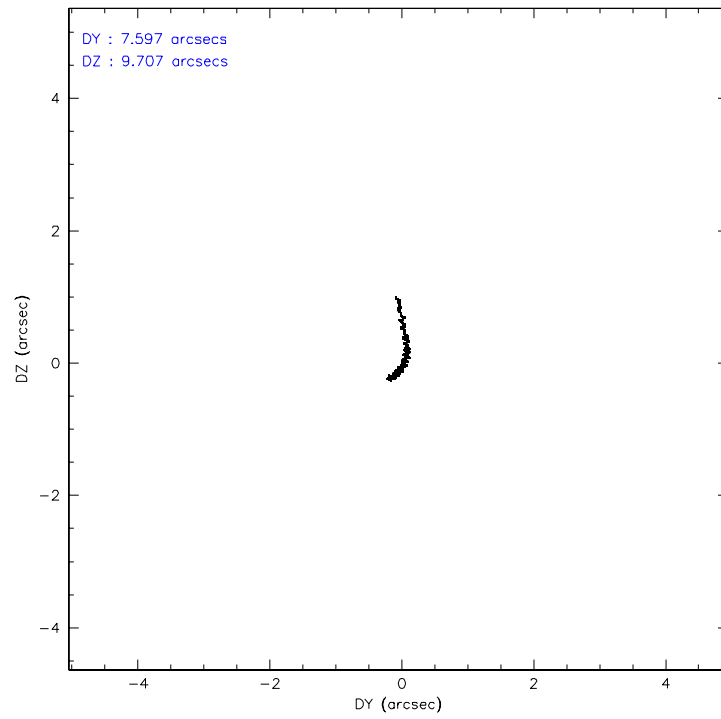
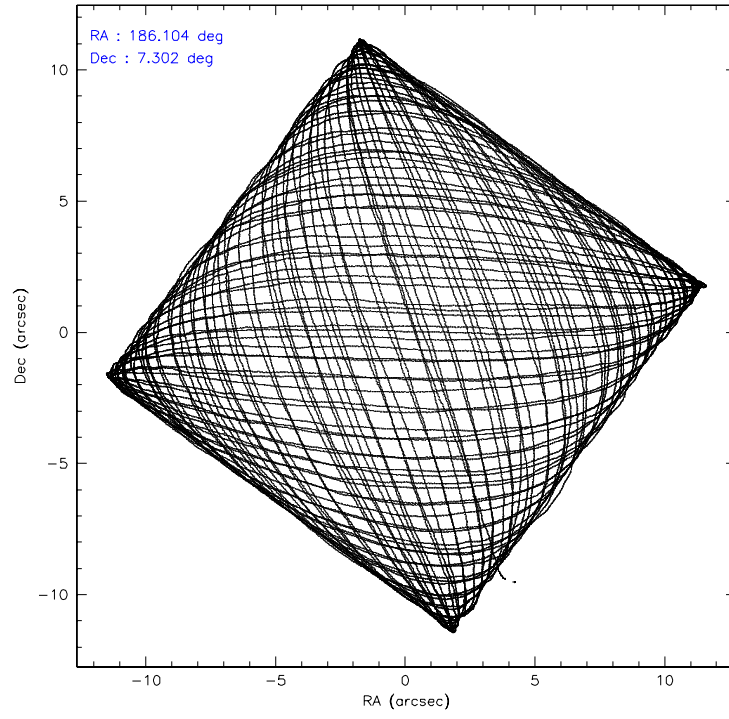
	ccd 3	ccd 5	ccd 6	ccd 7	ccd 8
level 1 events	255084	359816	259729	295906	329107
rejected events	230644	188237	232040	167861	252920
rejected %	90%	52%	89%	56%	76%

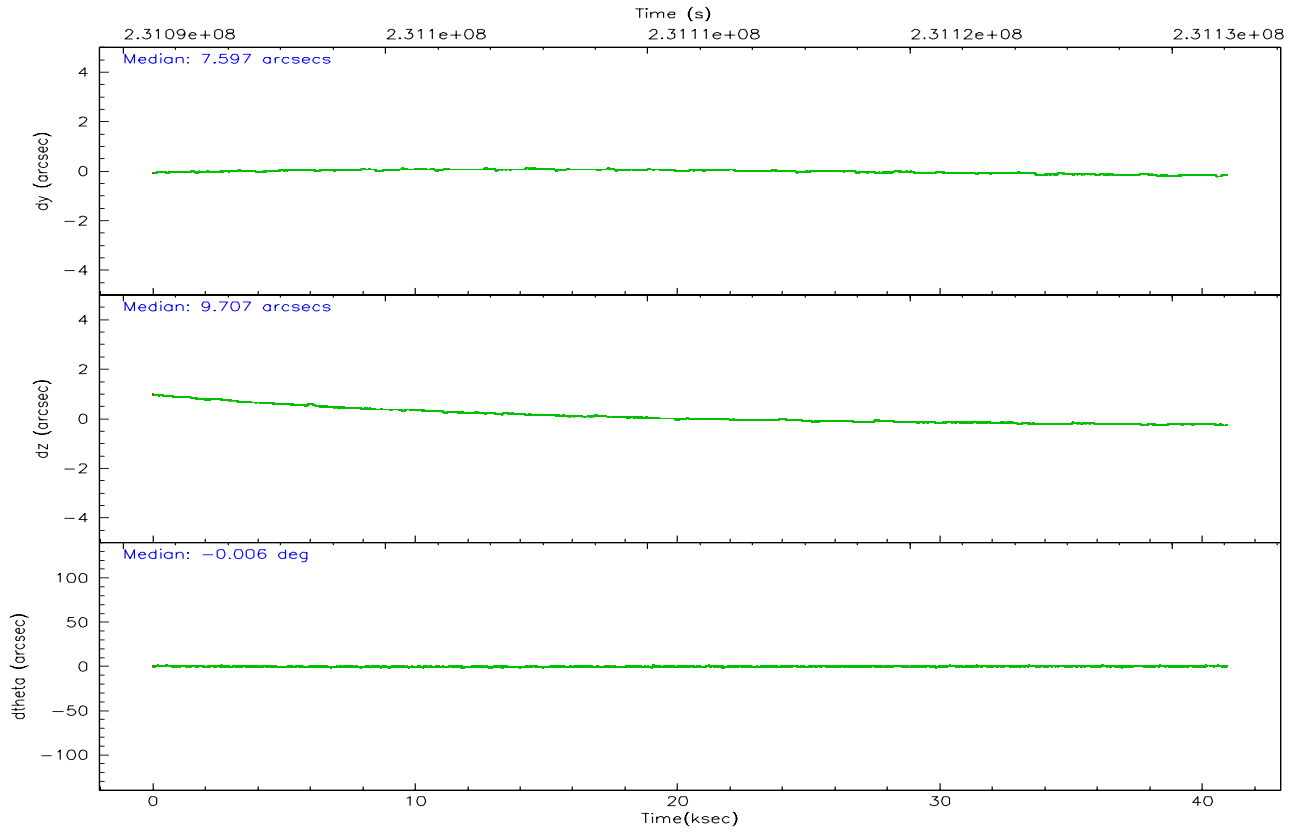
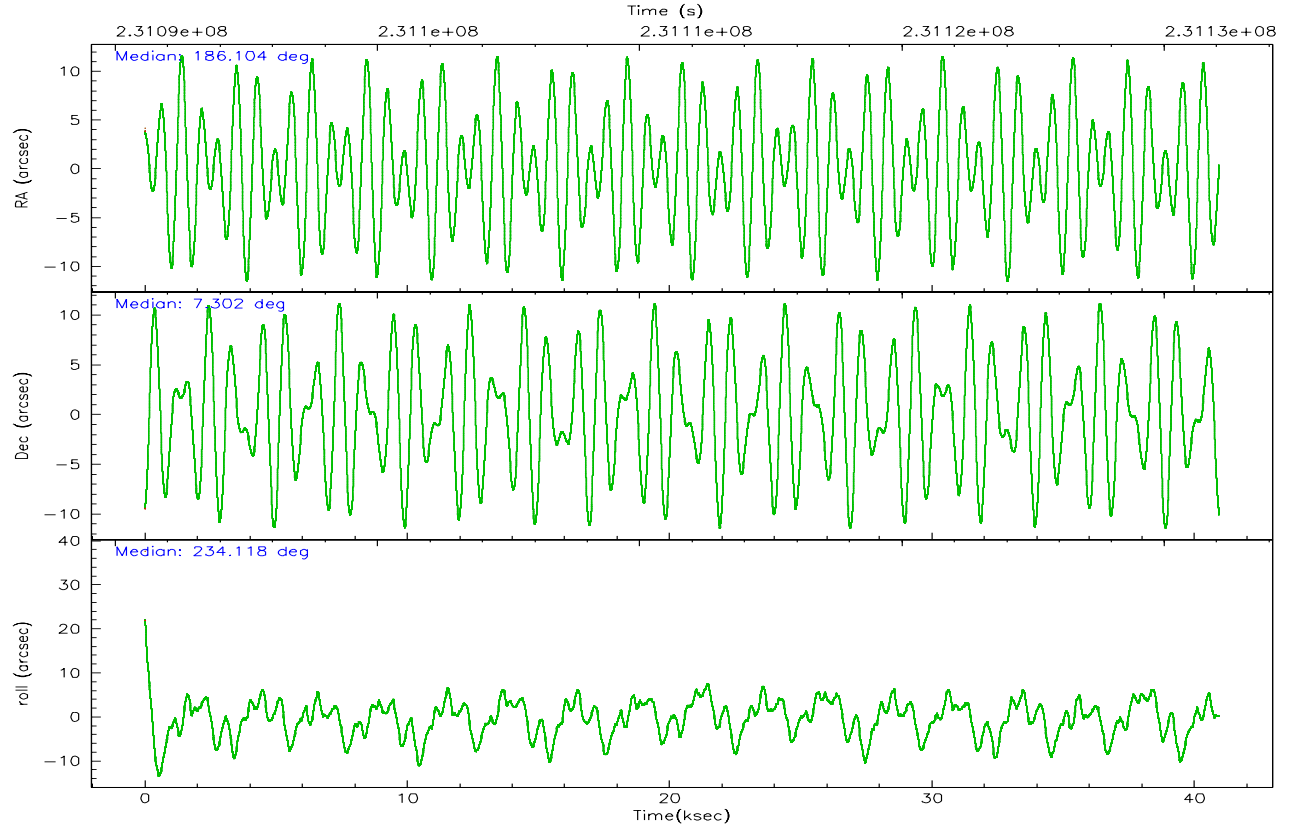
	ccd 3	ccd 5	ccd 6	ccd 7	ccd 8
grade 0 events	9168	13551	10327	9519	23572
	3%	3%	3%	3%	7%
grade 1 events	136	154	117	136	250
	0%	0%	0%	0%	0%
grade 2 events	5072	54804	5708	31664	17259
	1%	15%	2%	10%	5%
grade 3 events	2762	4499	3031	7824	7848
	1%	1%	1%	2%	2%
grade 4 events	2701	4207	2858	7617	7388
	1%	1%	1%	2%	2%
grade 5 events	9989	19714	10335	22060	14812
	3%	5%	3%	7%	4%
grade 6 events	4741	94546	5770	71432	20154
	1%	26%	2%	24%	6%
grade 7 events	220515	168341	221583	145654	237824
	86%	46%	85%	49%	72%

## 2.2 Compared Parameters

Parameter	Planned	Actual	Parameter	Planned	Actual
Instrument	ACIS	ACIS	Obspar format version number	6	6
Detector	ACIS-35678	ACIS-35678	Obspar file type	PREDICTED	ACTUAL
Grating	NONE	NONE	Obspar update status	NONE	UPDATED
Data mode	VFAINT	VFAINT	On-chip summing requested	N	N
Observation mode	POINTING	POINTING	Subarray requested	NONE	NONE
Pointing RA	186.106726	186.1042977920134	Alternating exposures requested	N	N
Pointing Dec	7.329091	7.301986655668451	Primary exposure time	0.000000	3.1
Pointing Roll	233.971511	234.1284424082361			
SIM focus pos (mm)	-0.684267	-0.6828225247311905			
SIM defocus (mm)	0	0.001444936568705701			
SIM translation stage pos (mm)	-190.132523	-190.1400660498719			
SIM translation stage offset (mm)	0	0.00754346686406393			
Observation start time	231092090.184000	231090778.23491			
Observation start date	2005-04-28T16:13:46	2005-04-28T15:52:58			
Observation end time	231132090.184000	231133318.29935			
Observation end date	2005-04-29T03:20:26	2005-04-29T03:41:58			
Read mode	TIMED	TIMED			

## 2.3 Aspect





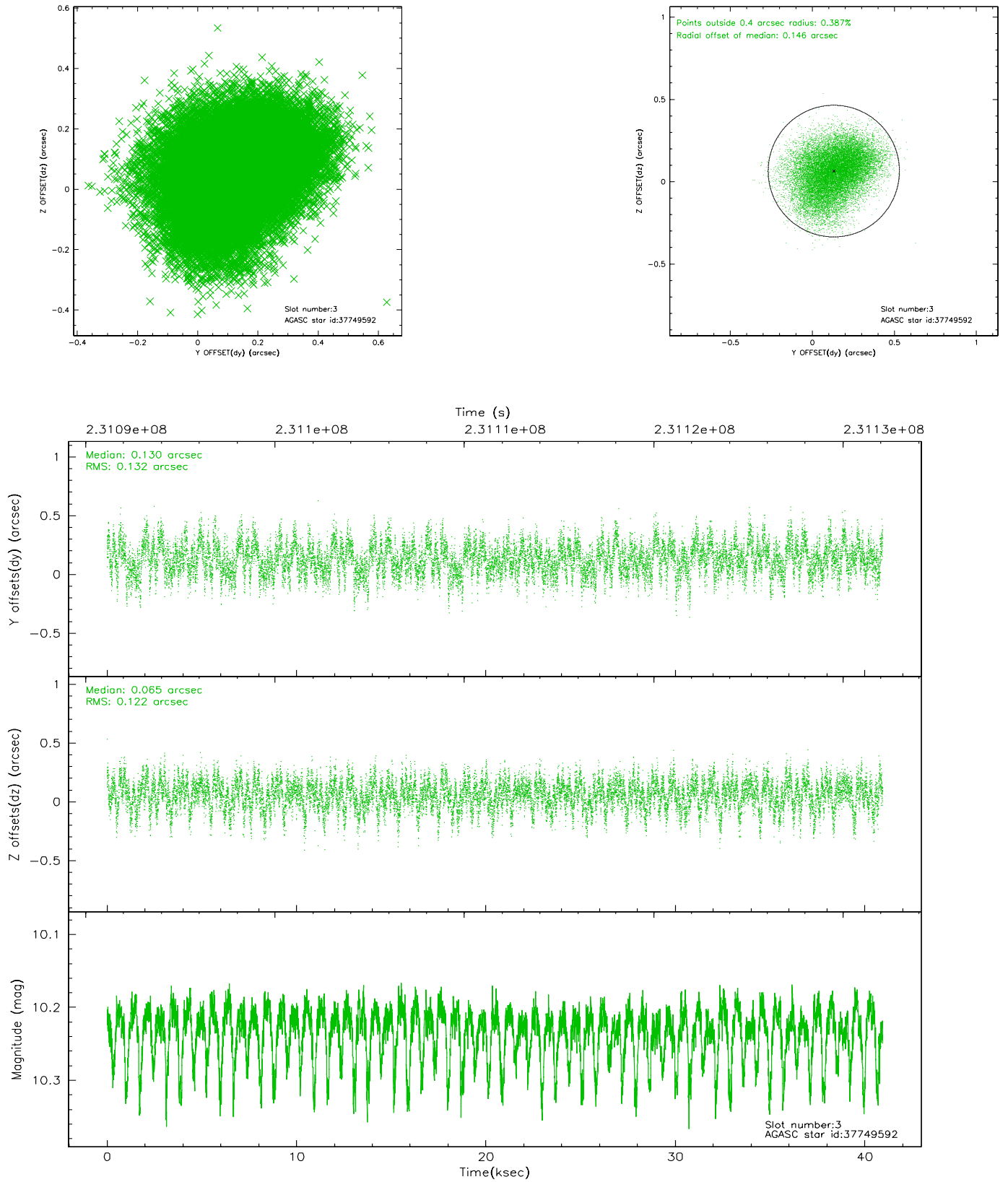
### Slot Statistics

slot	status	id	mag	n_pts	med_dy	med_dz	dr1	dr2	ra	dec	mean_y	mean_z
0	FID	ACIS-S-1	7.19	9988	0.019	0.003	0.012	0.048	0.000000	0.000000	935.72	-1726.69
1	FID	ACIS-S-5	7.24	9988	-0.046	0.021	0.008	0.014	0.000000	0.000000	-1813.35	170.85
2	FID	ACIS-S-6	7.35	9988	0.005	-0.013	0.015	0.051	0.000000	0.000000	401.23	814.82
3	GUIDE	37749592	10.23	19889	0.130	0.065	0.194	0.307	186.177253	6.631115	1884.25	1681.63
4	GUIDE	37751880	9.66	19947	0.087	-0.024	0.162	0.251	185.771871	6.844190	2115.83	59.33
5	GUIDE	37753024	8.01	19967	-0.091	-0.082	0.095	0.153	186.830113	7.241612	-1266.72	2273.07
6	GUIDE	114434008	8.76	19972	-0.072	0.038	0.101	0.156	185.534773	7.569663	499.69	-2160.39
7	GUIDE	114565080	10.16	19953	-0.029	0.012	0.249	0.369	186.537681	7.759404	-2157.50	331.43

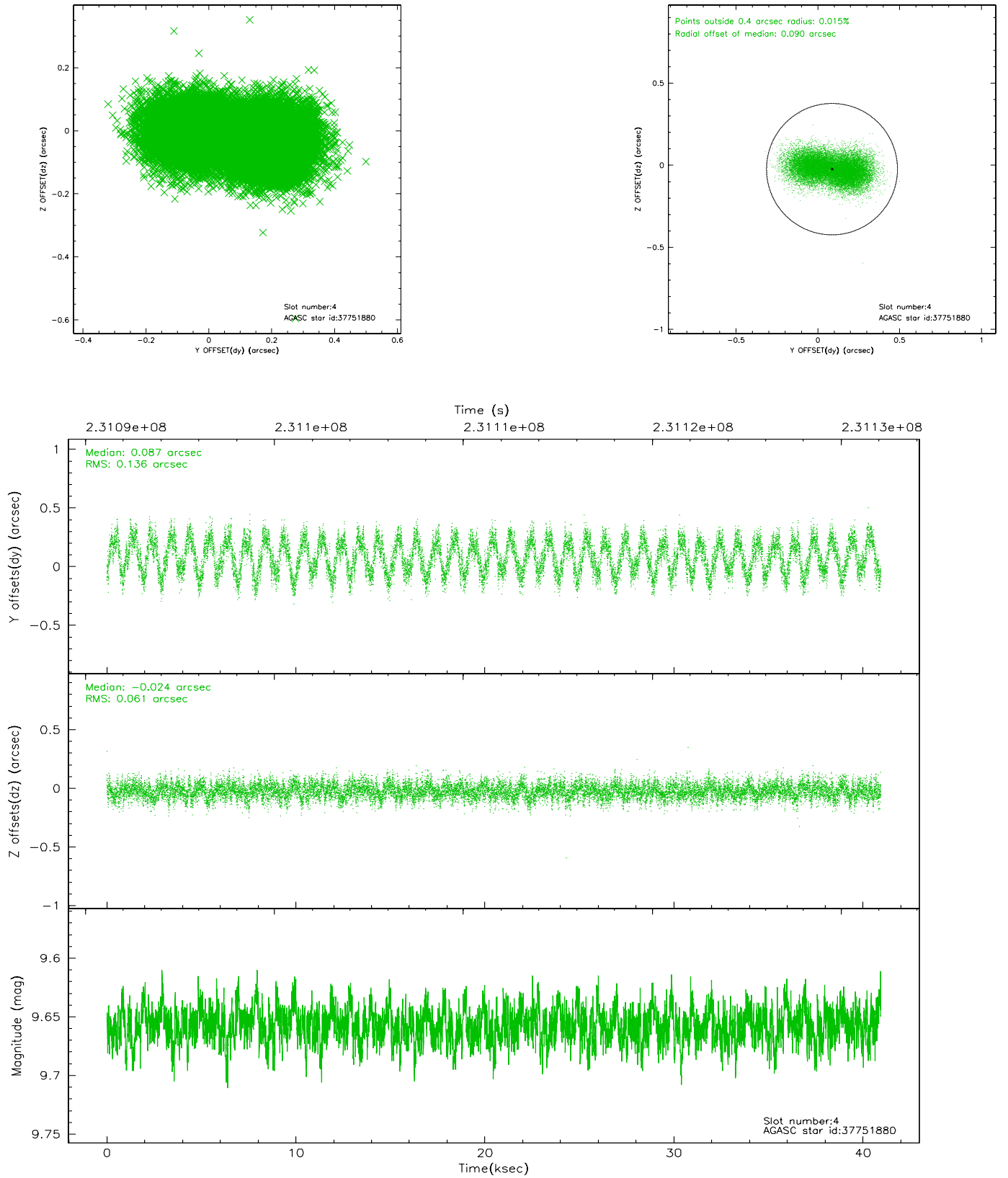


## 2.4 Star Slots

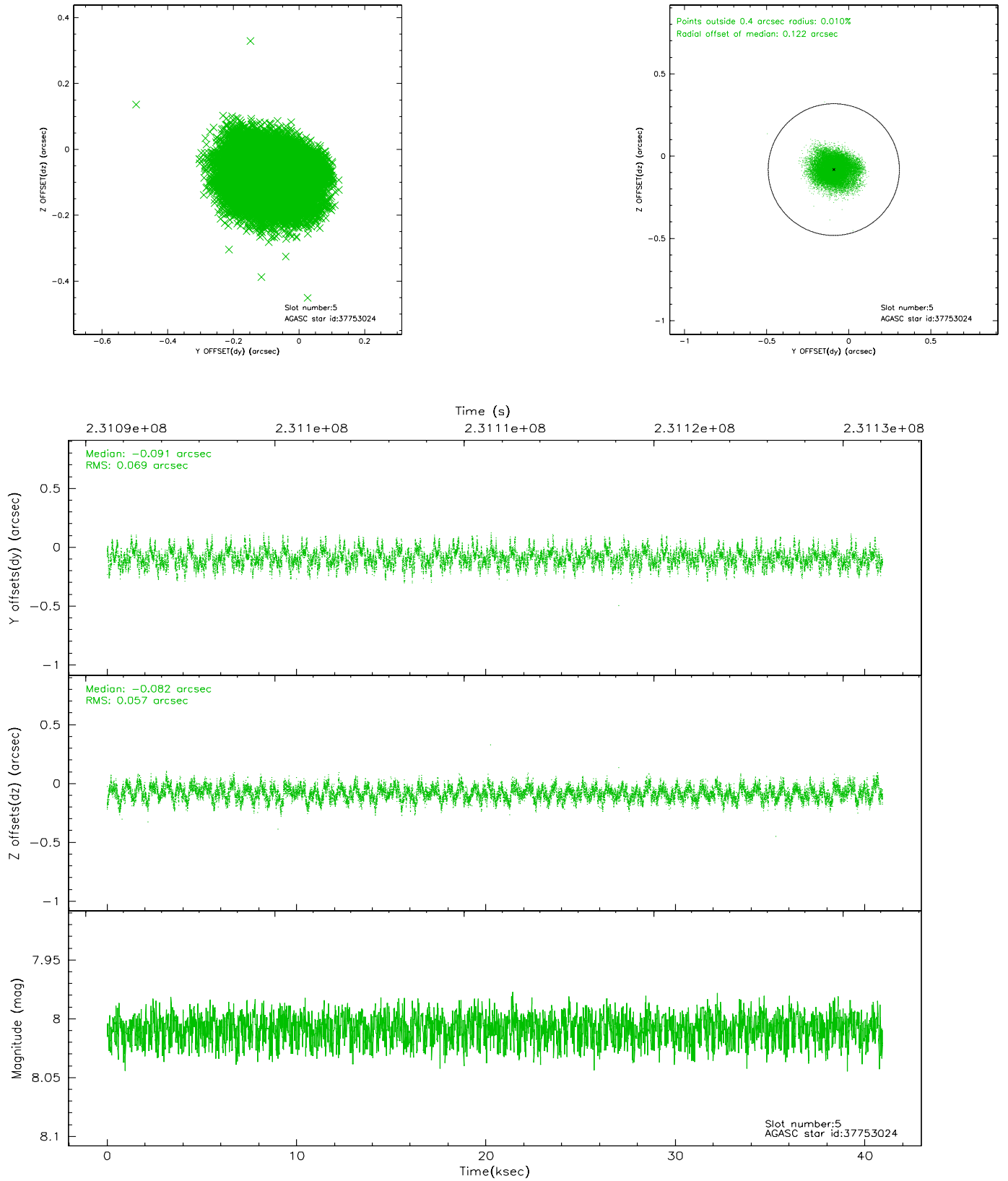
### 2.4.1 Slot 3



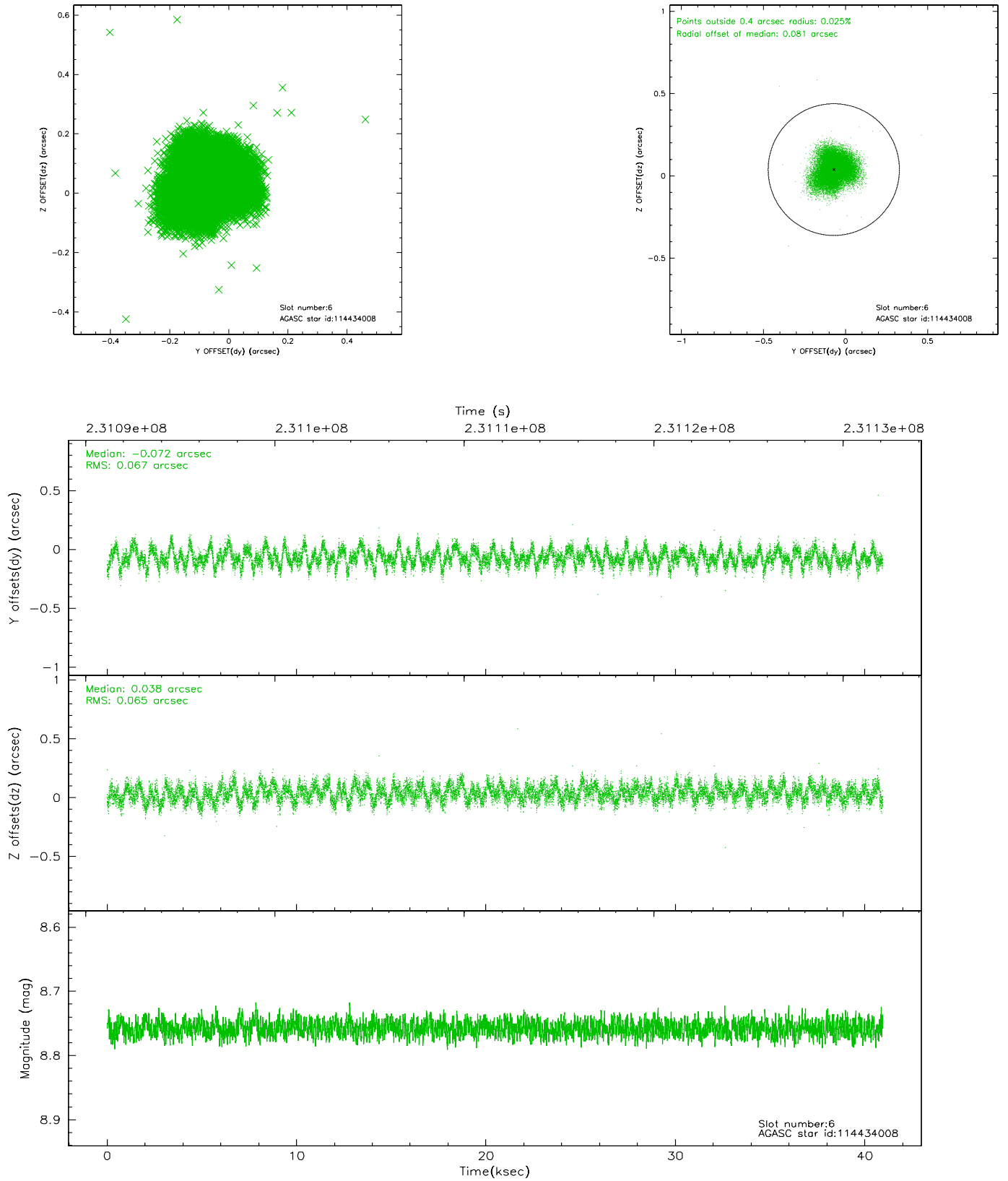
## 2.4.2 Slot 4



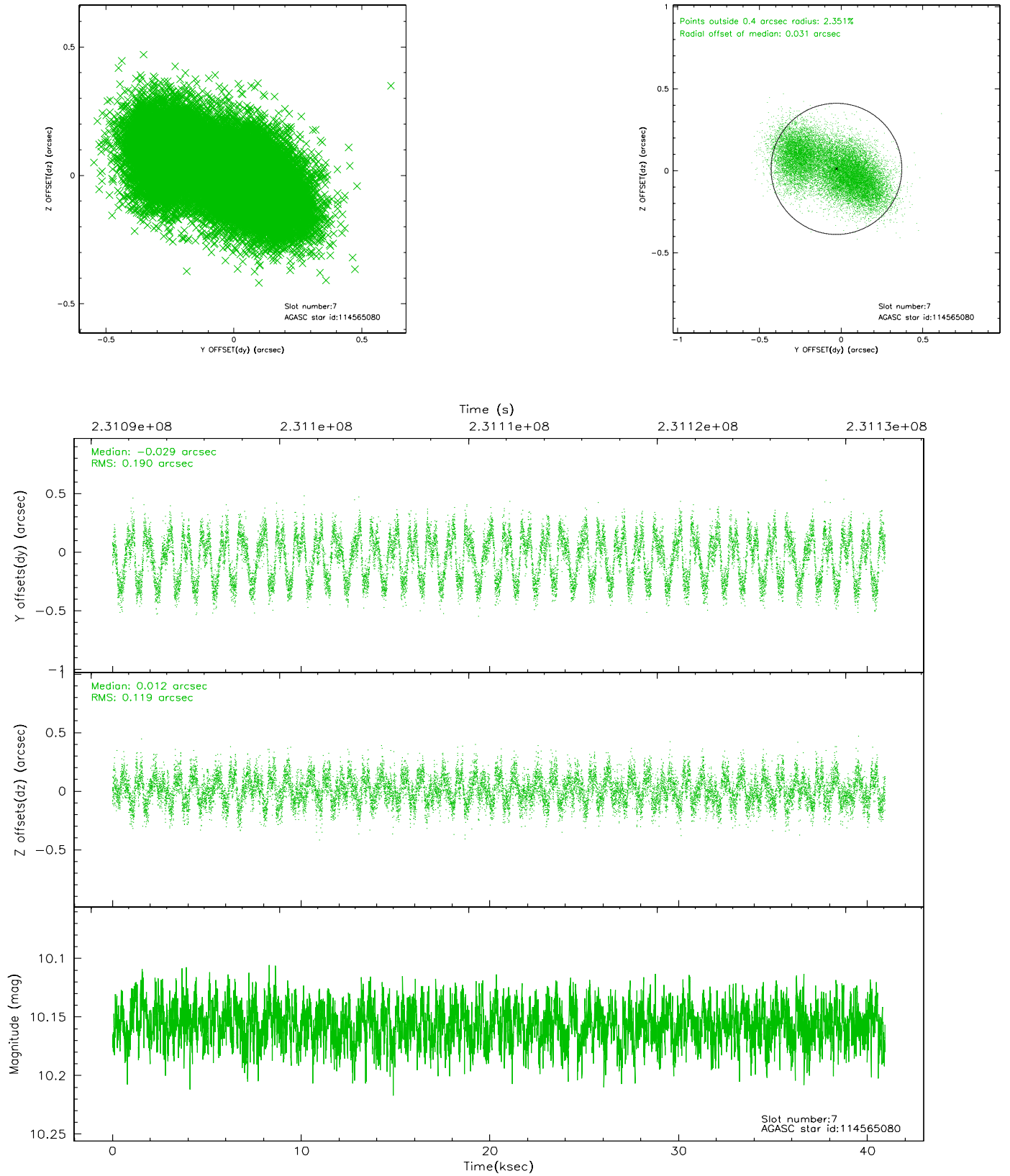
### 2.4.3 Slot 5



## 2.4.4 Slot 6

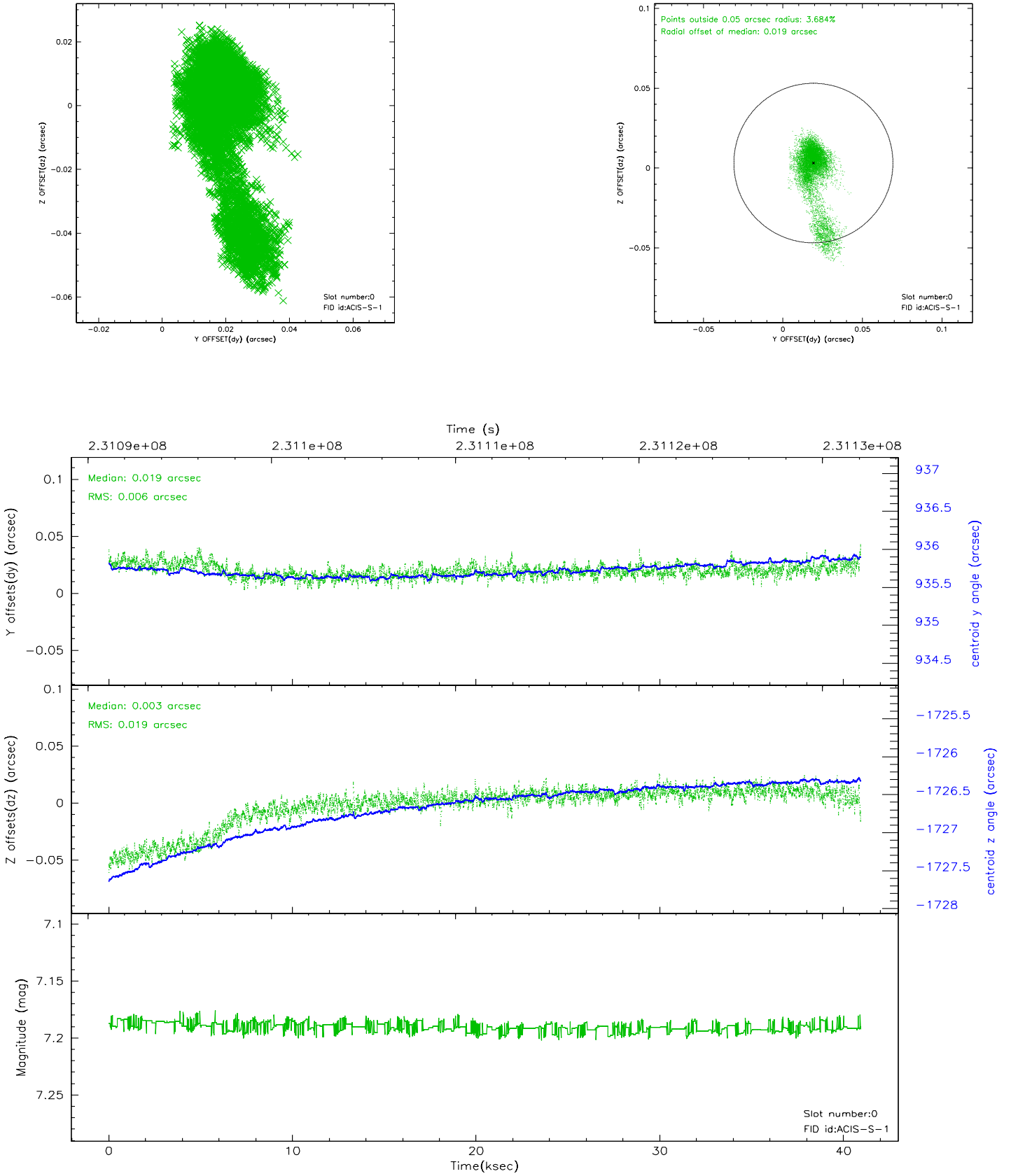


## 2.4.5 Slot 7

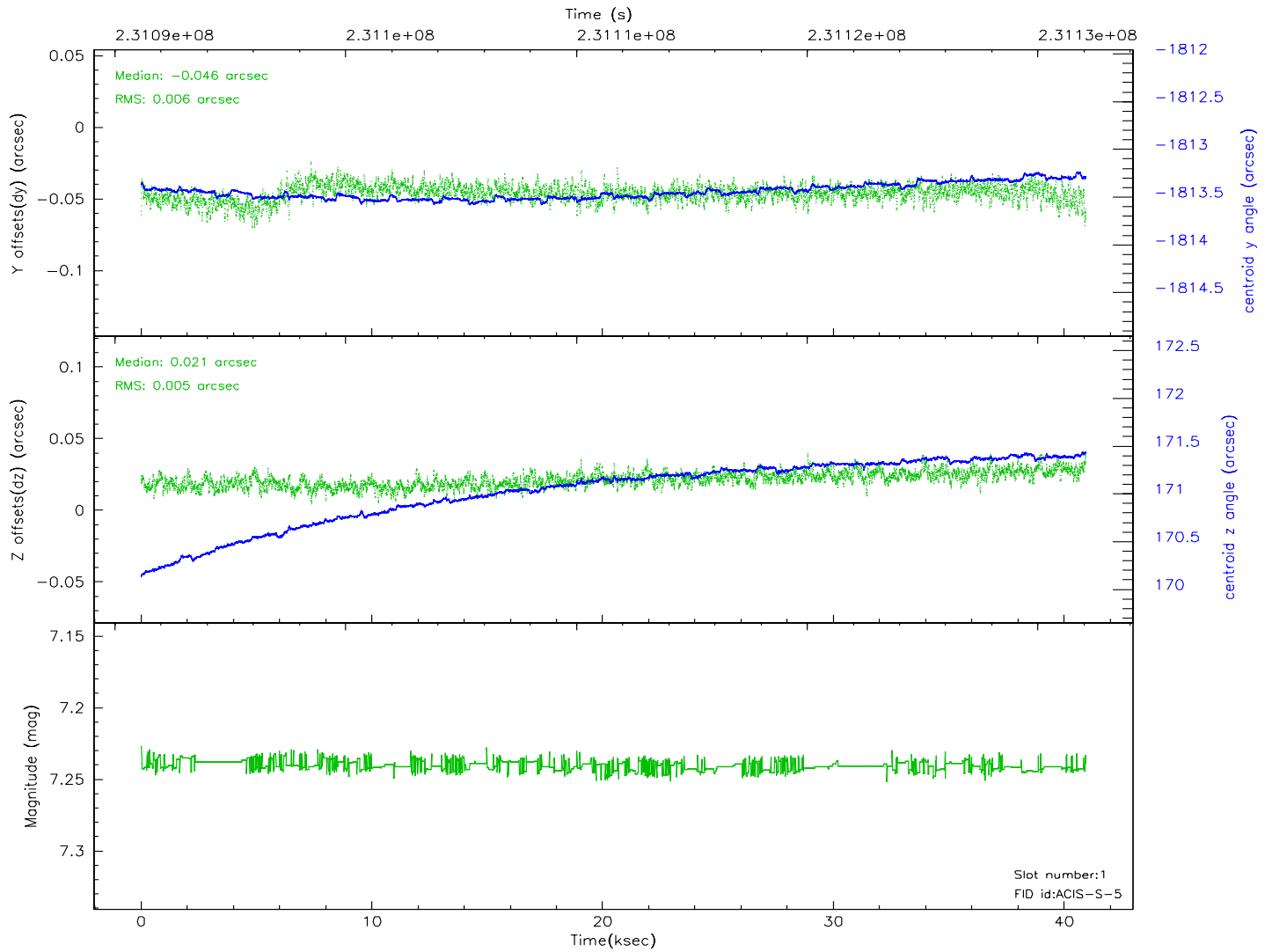
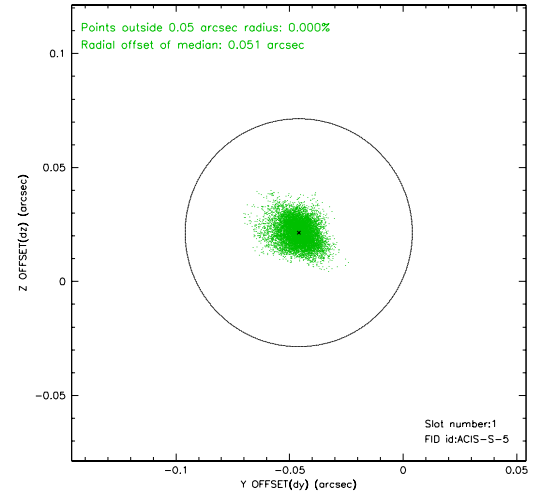
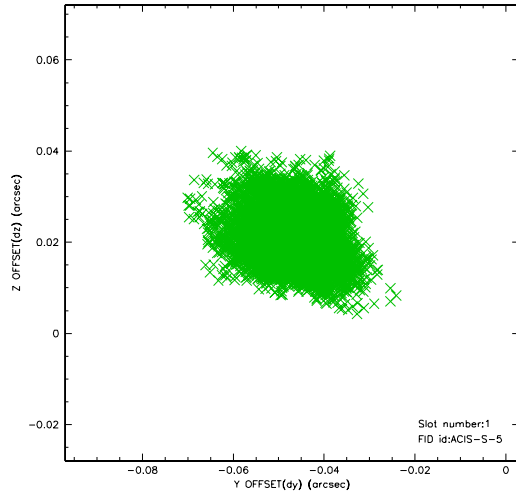


## 2.5 FID Slots

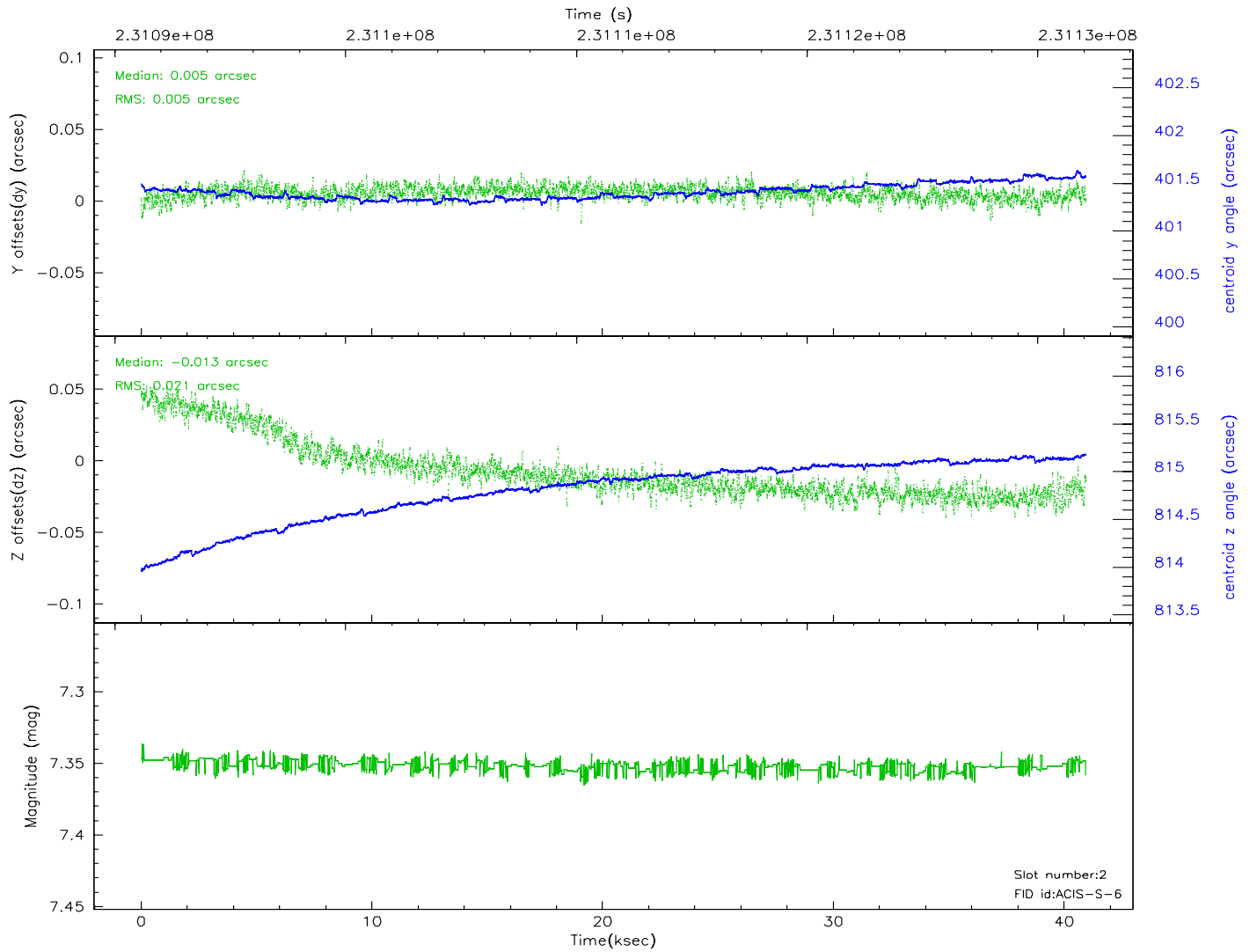
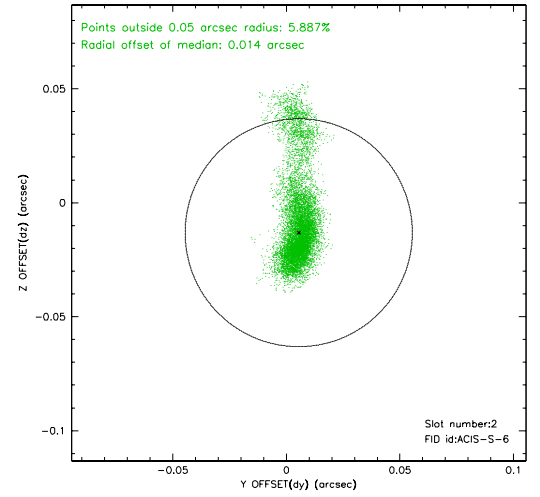
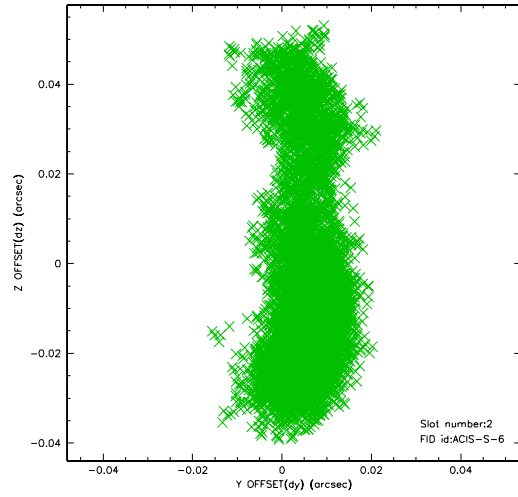
### 2.5.1 Slot 0



## 2.5.2 Slot 1

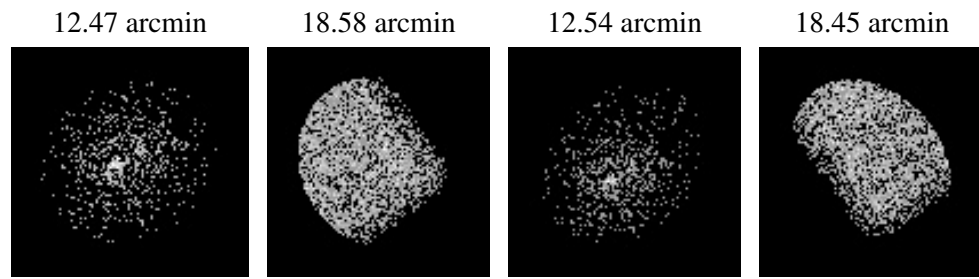


### 2.5.3 Slot 2





### 3 Point Sources



## A Summary

### A.1 Status

V&V Scientist	Beth Sundheim
V&V Date (YYYY-MM-DD)	2006.03.02
V&V Edition	1
V&V Disposition and Status	OK
V&V Charge Time	40.03339

### A.2 Comments