

V&V Reference Report

L2 ASCDS Version : 7.6.7.1

Observation 5910 - L2 Version 002
Chandra X-Ray Center

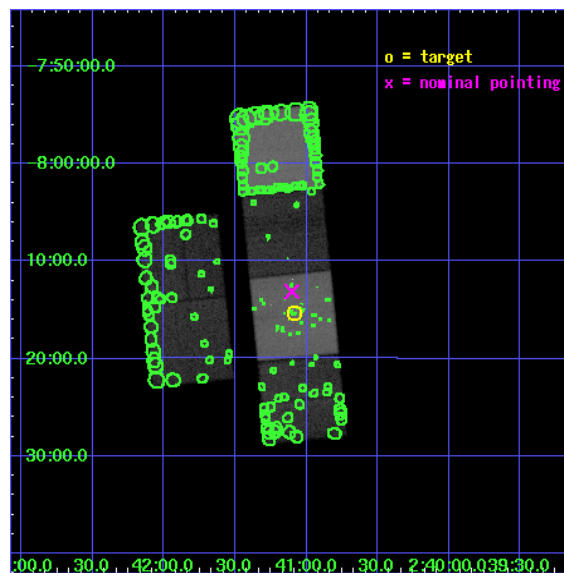
L2 Processing Date : Mar 25 2006

Contents

1	Front	2
2	OBI	3
2.1	OBI	3
2.1.1	Images	3
2.1.2	Bias	3
2.1.3	Parameters	4
2.1.4	Events	4
2.2	Compared Parameters	5
2.3	Aspect	6
2.4	Star Slots	9
2.4.1	Slot 3	9
2.4.2	Slot 4	10
2.4.3	Slot 5	11
2.4.4	Slot 6	12
2.4.5	Slot 7	13
2.5	FID Slots	14
2.5.1	Slot 0	14
2.5.2	Slot 1	15
2.5.3	Slot 2	16
3	Point Sources	17
A	Summary	18
A.1	Status	18
A.2	Comments	18

1 Front

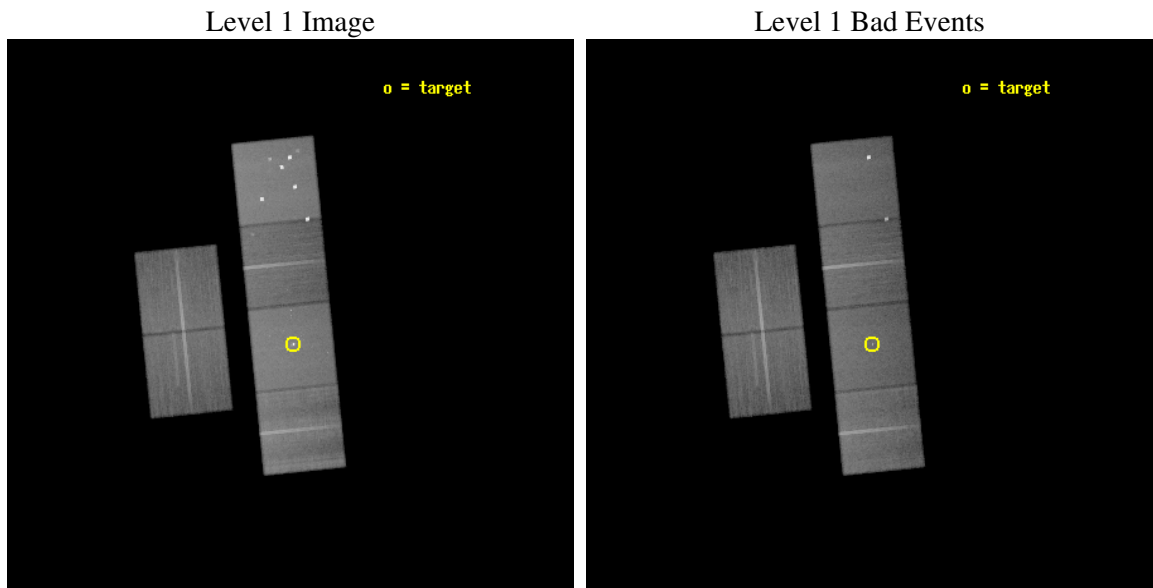
seq_num	600429
obs_id	5910
title	The Multi-Talented Elliptical Galaxy NGC1052
observer	Dr. Jimmy Irwin
object	NGC1052
dtcycle	0
cycle	P
ra_targ	40.27
dec_targ	-8.255639
ra_nom	40.275536657169
dec_nom	-8.2186707695439
roll_nom	84.270501692002
revision	2
ontime	59958.358796328
livetime	59199.12995466
ontime2	59958.358786345
ontime3	59951.876775861
ontime5	59958.35877642
ontime6	59958.358796328
ontime7	59958.358796328
ontime8	59951.876795739
l2events	652435



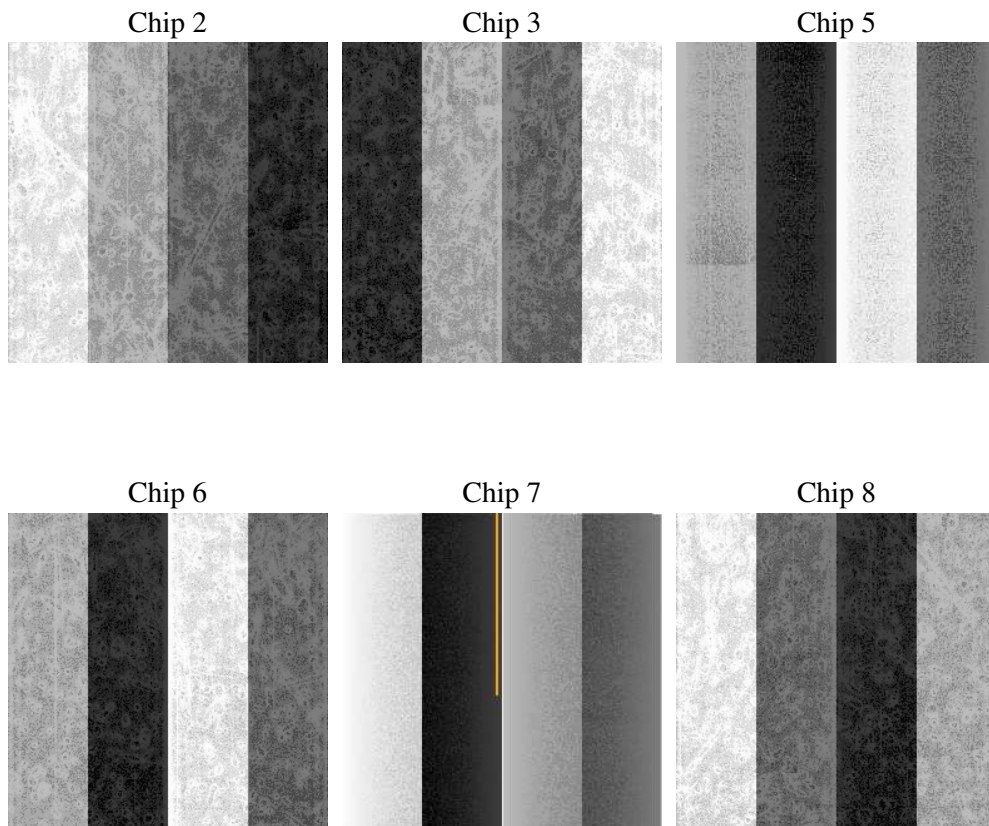
2 OBI

2.1 OBI

2.1.1 Images



2.1.2 Bias



2.1.3 Parameters

obi_num	1
ascdsver	7.6.7.1
caldsver	3.2.1
date	2006-03-25T20:13:27
revision	2

sched_exp_time	60000.000000
ontime	59962.010357022
ontime2	59962.010337114
ontime3	59955.528326631
ontime5	59962.010337114
ontime6	59962.010347098
ontime7	59962.010357022
ontime8	59955.528346509
l1events	2884668

2.1.4 Events

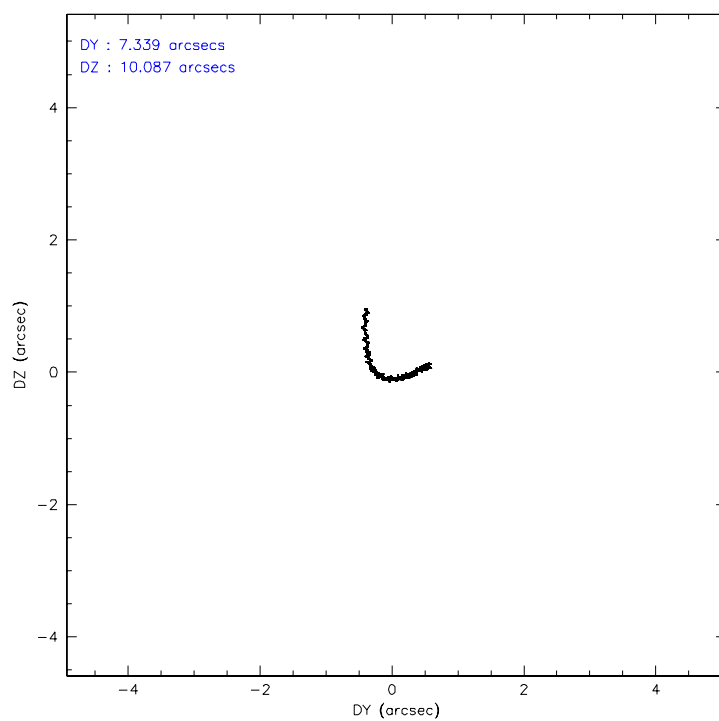
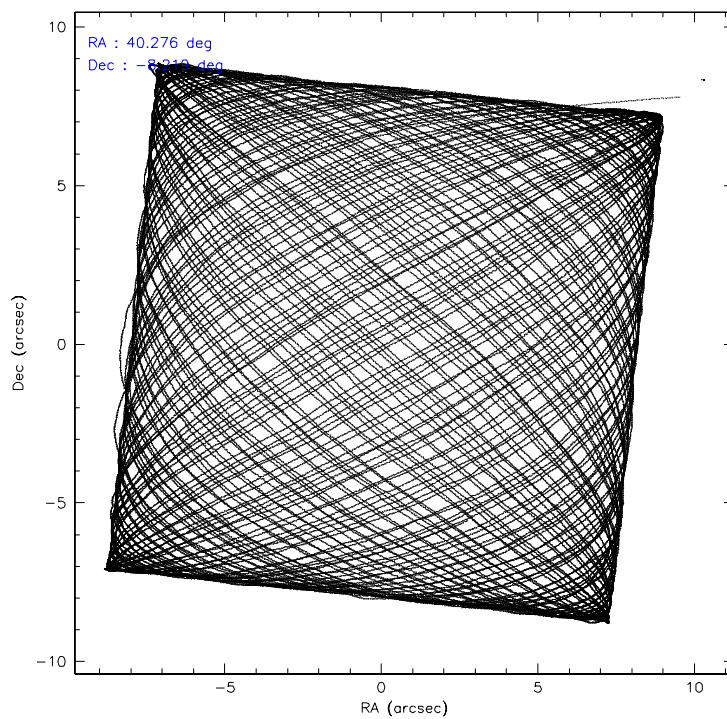
	ccd 2	ccd 3	ccd 5	ccd 6	ccd 7	ccd 8
level 1 events	388576	370156	678041	389125	554495	504275
rejected events	338991	322370	347367	338714	329355	378947
rejected %	87%	87%	51%	87%	59%	75%

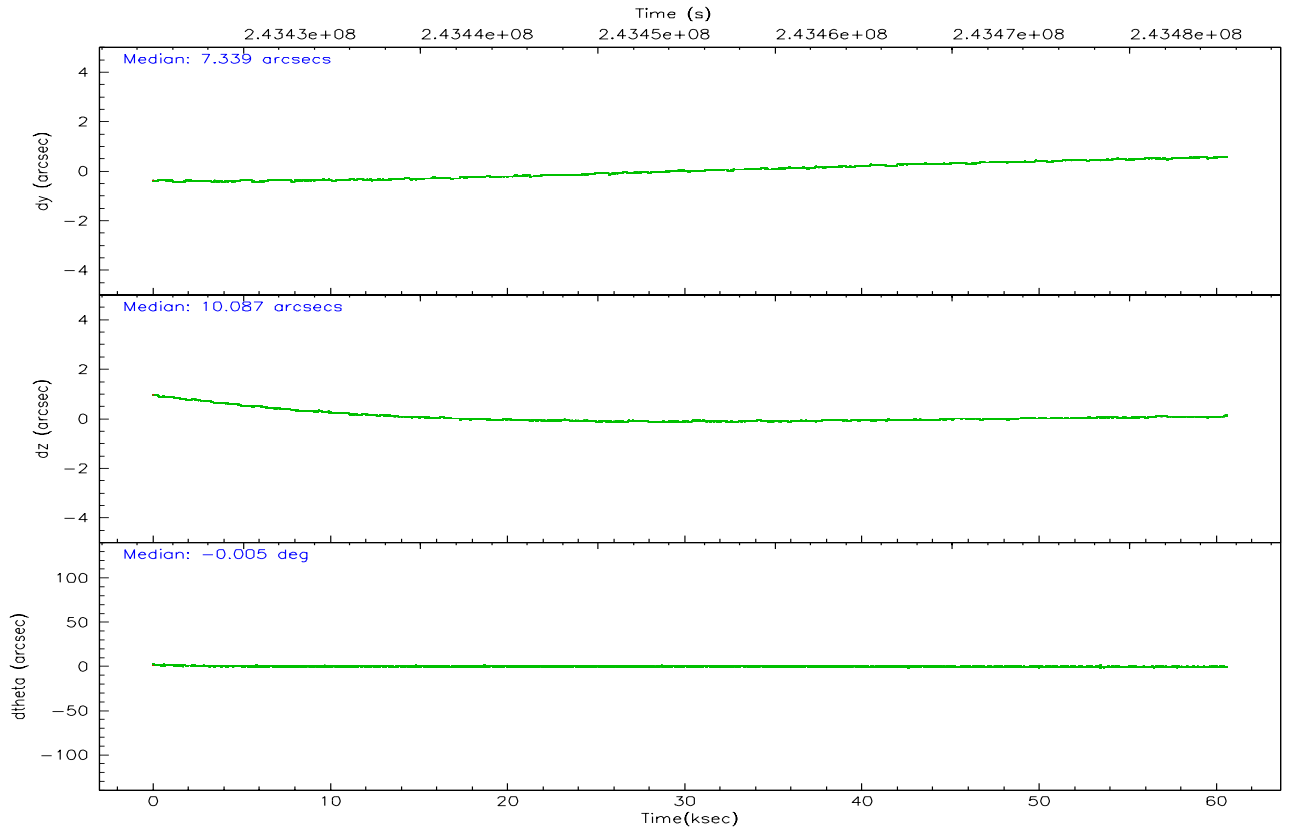
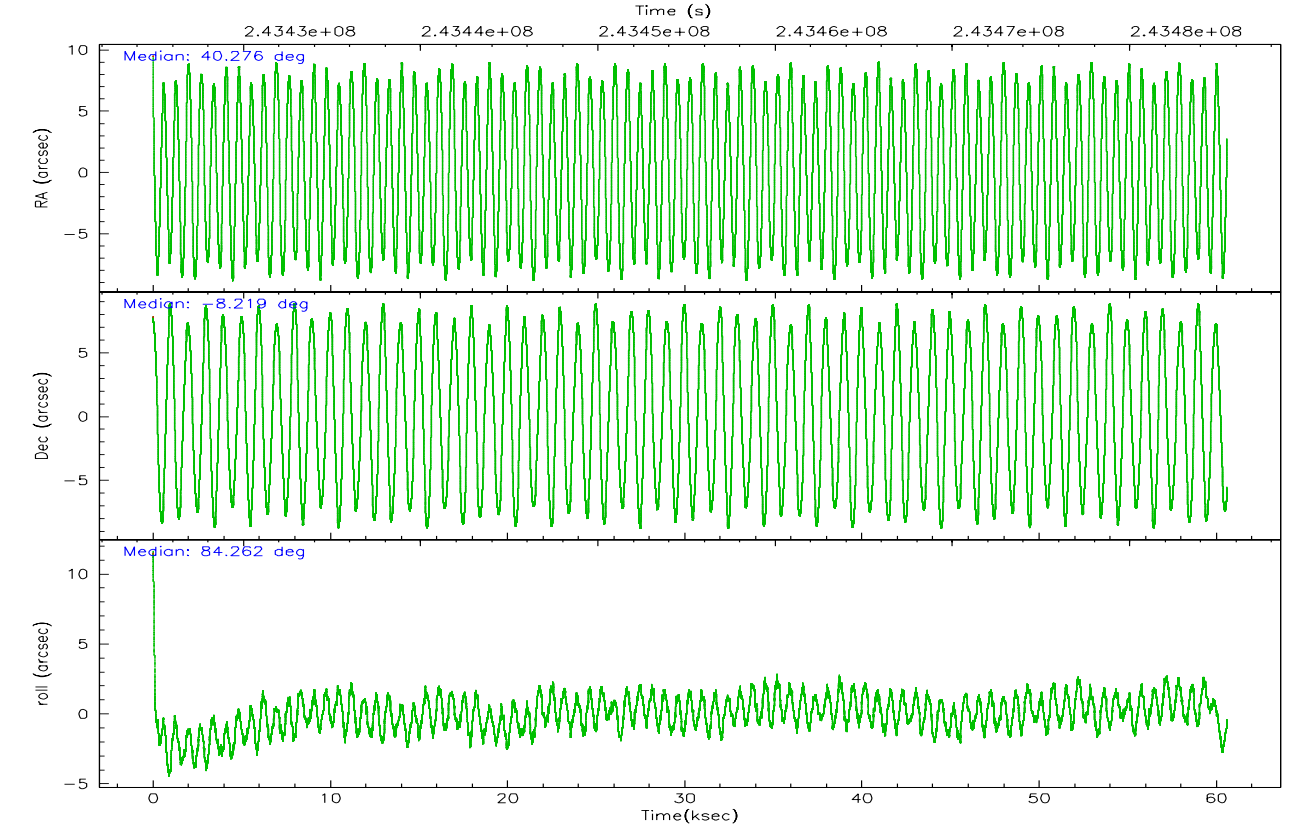
	ccd 2	ccd 3	ccd 5	ccd 6	ccd 7	ccd 8
grade 0 events	22130	21260	63944	20444	14884	39918
	5%	5%	9%	5%	2%	7%
grade 1 events	254	207	928	216	362	379
	0%	0%	0%	0%	0%	0%
grade 2 events	10379	9213	91022	10551	58329	26165
	2%	2%	13%	2%	10%	5%
grade 3 events	4388	4414	6725	4684	11326	14570
	1%	1%	0%	1%	2%	2%
grade 4 events	4419	4491	6012	4446	11184	13220
	1%	1%	0%	1%	2%	2%
grade 5 events	15547	17281	30614	18123	35041	23913
	4%	4%	4%	4%	6%	4%
grade 6 events	8275	8408	163006	10292	129442	31459
	2%	2%	24%	2%	23%	6%
grade 7 events	323184	304882	315790	320369	293927	354651
	83%	82%	46%	82%	53%	70%

2.2 Compared Parameters

Parameter	Planned	Actual	Parameter	Planned	Actual
Instrument	ACIS	ACIS	Obspar format version number	6	6
Detector	ACIS-235678	ACIS-235678	Obspar file type	PREDICTED	ACTUAL
Grating	NONE	NONE	Obspar update status	NONE	UPDATED
Data mode	VFAINT	VFAINT	On-chip summing requested	N	N
Observation mode	POINTING	POINTING	Subarray requested	NONE	NONE
Pointing RA	40.287199	40.27553665716932	Alternating exposures requested	N	N
Pointing Dec	-8.243325	-8.218670769543907	Primary exposure time	0.000000	3.2
Pointing Roll	84.115540	84.27050169200162			
SIM focus pos (mm)	-0.684267	-0.6828225247311905			
SIM defocus (mm)	0	0.001444936568705701			
SIM translation stage pos (mm)	-190.132523	-190.1400660498719			
SIM translation stage offset (mm)	0	0.00754346686406393			
Observation start time	243425512.184000	243424333.71146			
Observation start date	2005-09-18T10:10:48	2005-09-18T09:52:13			
Observation end time	243485512.184000	243486075.1018			
Observation end date	2005-09-19T02:50:48	2005-09-19T03:01:15			
Read mode	TIMED	TIMED			

2.3 Aspect



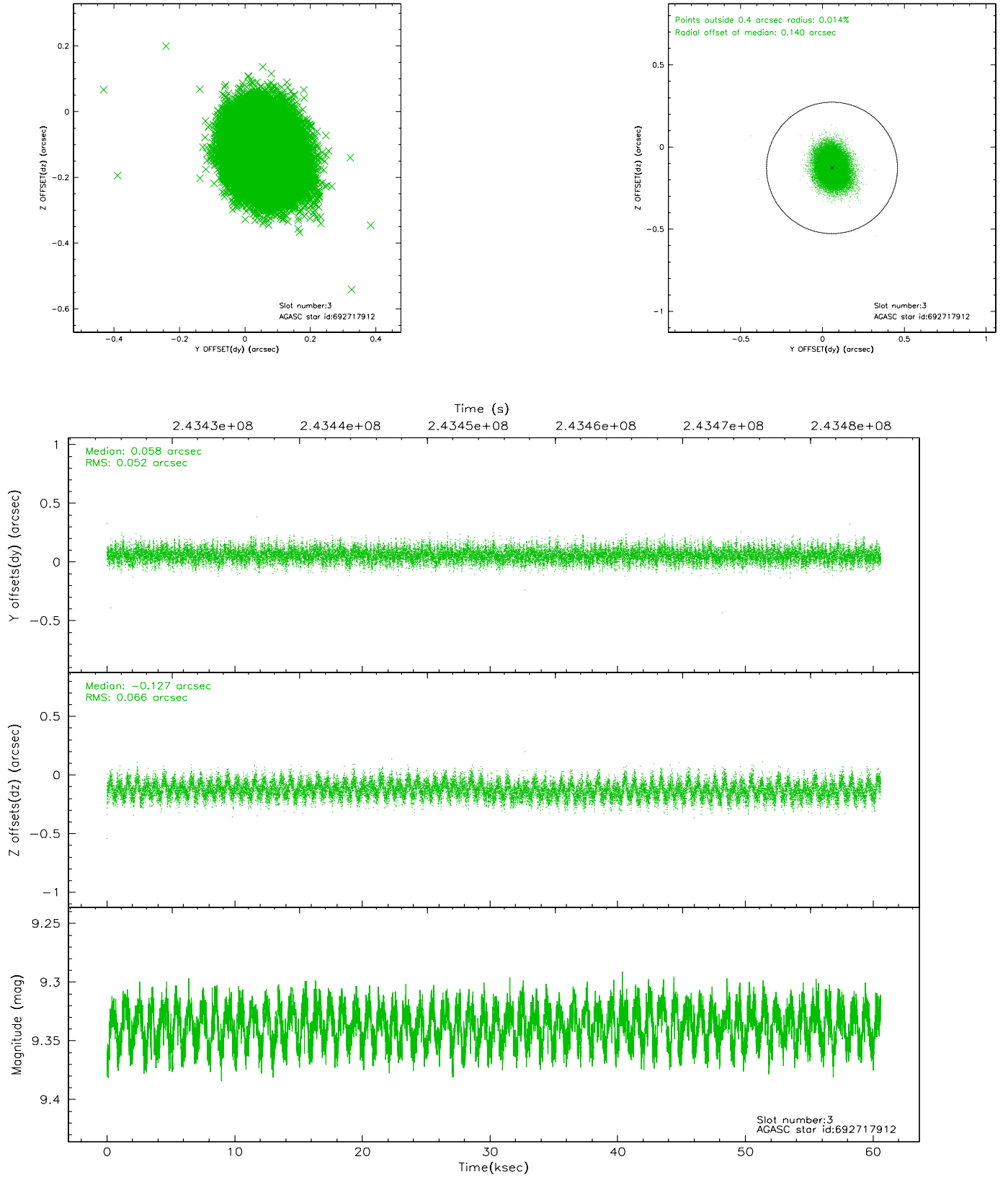


Slot Statistics

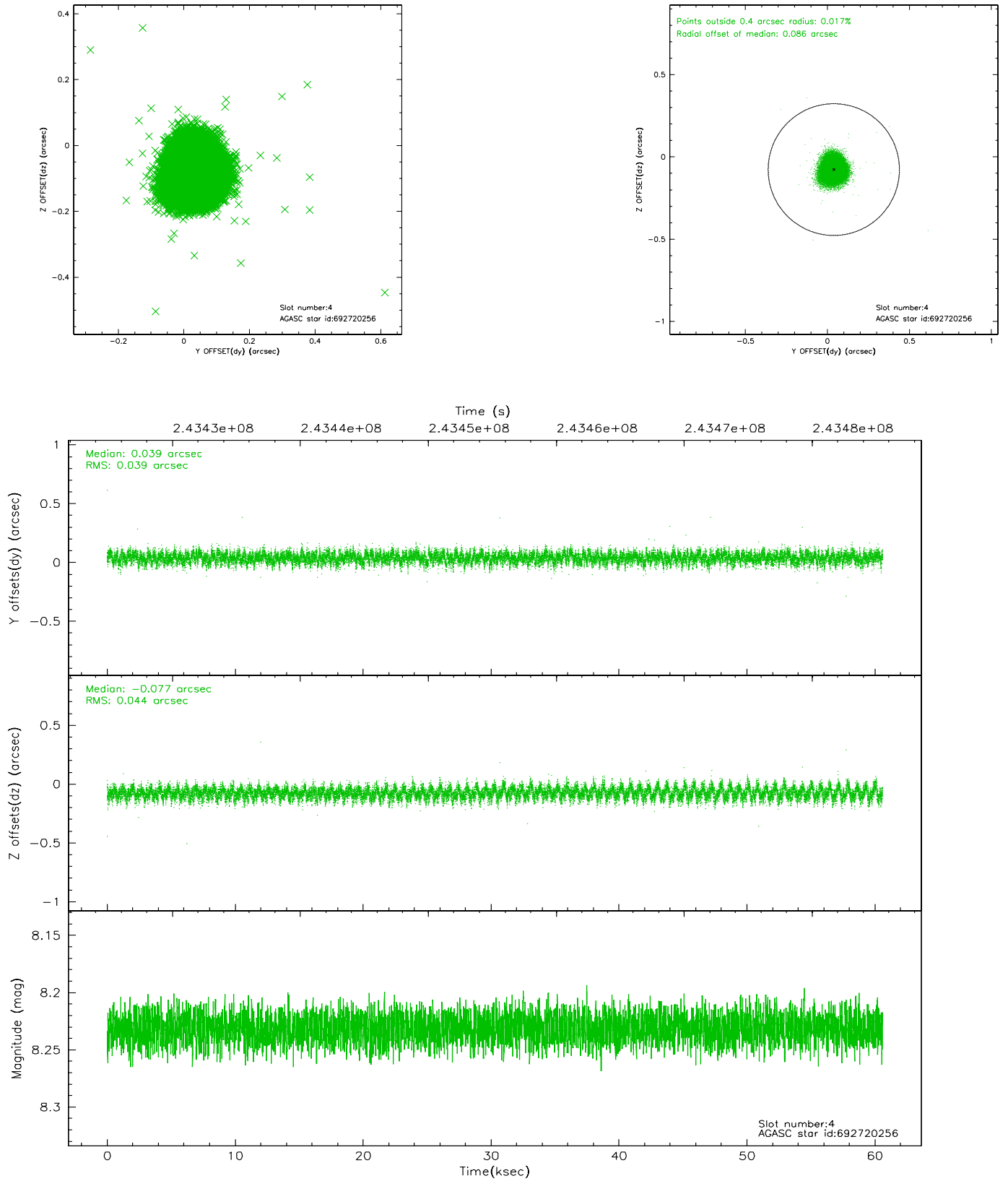
slot	status	id	mag	n_pts	med_dy	med_dz	dr1	dr2	ra	dec	mean_y	mean_z
0	FID	ACIS-S-2	7.11	14783	-0.041	-0.002	0.012	0.018	0.000000	0.000000	-760.12	-1731.45
1	FID	ACIS-S-4	7.21	14783	0.066	0.020	0.012	0.018	0.000000	0.000000	2153.23	177.18
2	FID	ACIS-S-5	7.24	14783	-0.054	-0.009	0.013	0.021	0.000000	0.000000	-1813.08	170.67
3	GUIDE	692717912	9.34	29554	0.058	-0.127	0.090	0.146	39.833965	-8.248709	-185.62	1603.99
4	GUIDE	692720256	8.23	29562	0.039	-0.077	0.062	0.100	40.539277	-8.375926	-382.57	-942.00
5	GUIDE	692721992	9.35	29551	0.052	0.142	0.077	0.124	40.336547	-8.667081	-1499.19	-330.96
6	GUIDE	692721328	8.47	29543	0.016	-0.136	0.062	0.103	39.989942	-8.868254	-2346.65	820.90
7	GUIDE	692855064	6.39	29568	-0.163	0.198	0.068	0.109	40.981517	-7.912488	1436.45	-2340.36

2.4 Star Slots

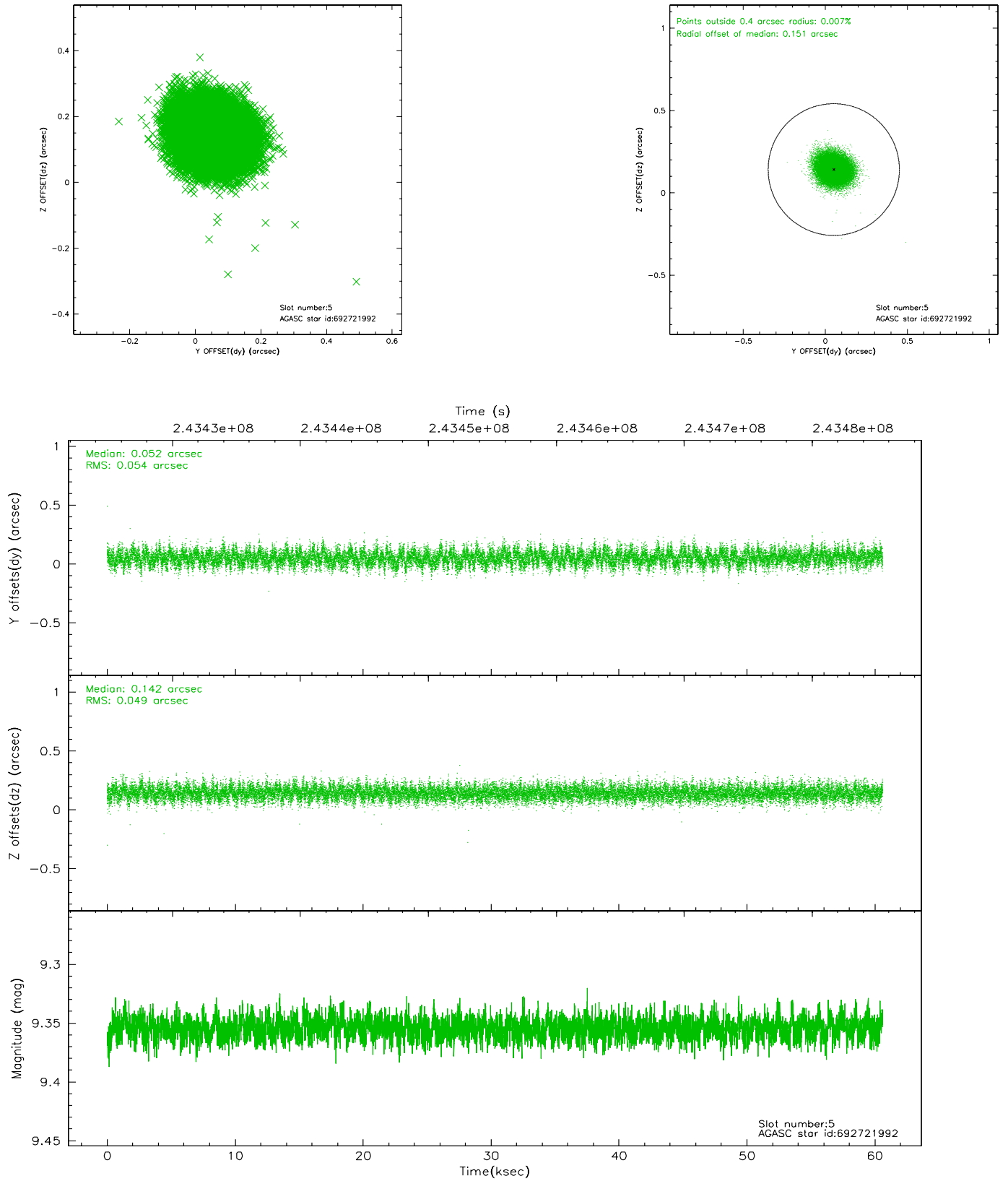
2.4.1 Slot 3



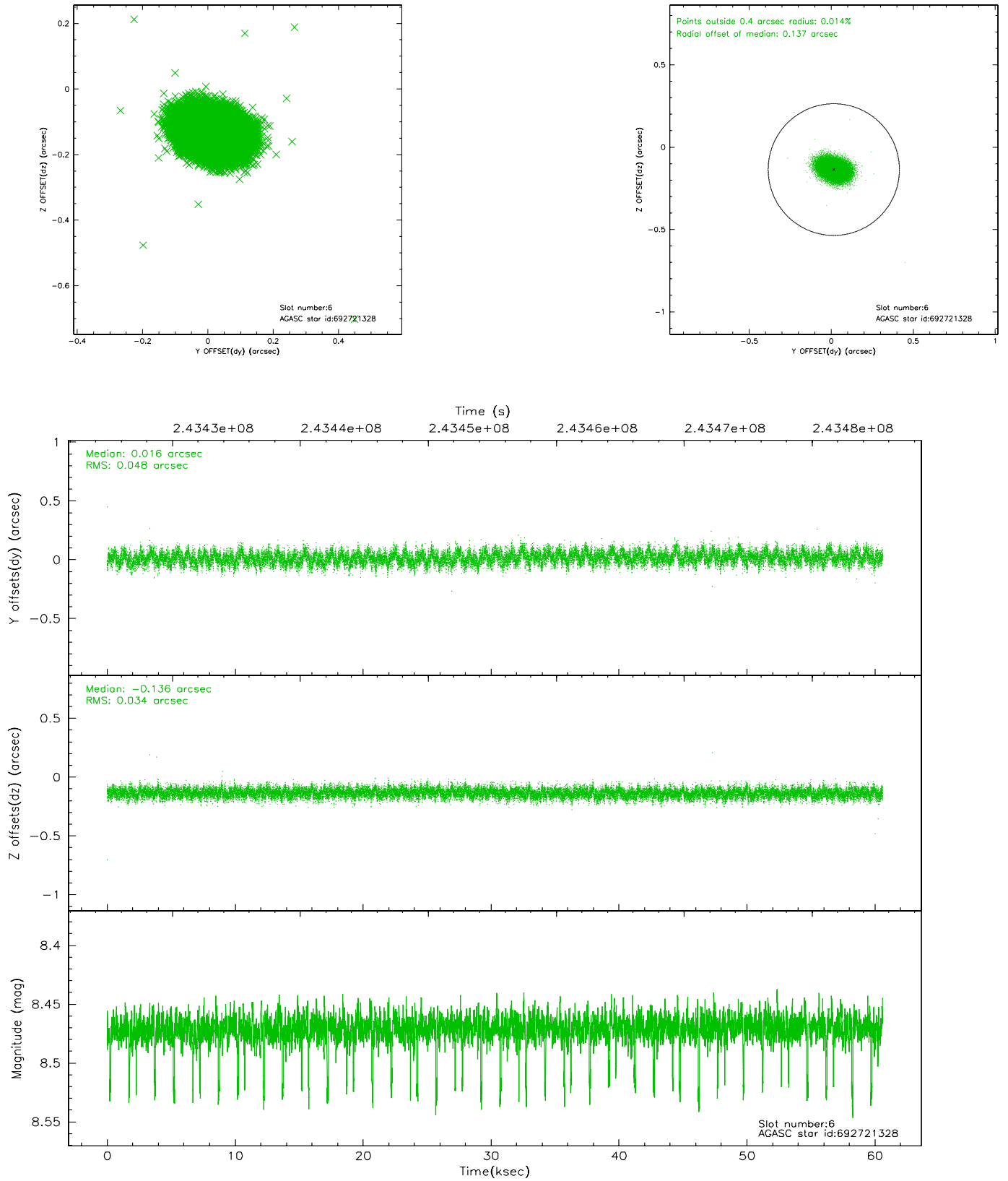
2.4.2 Slot 4



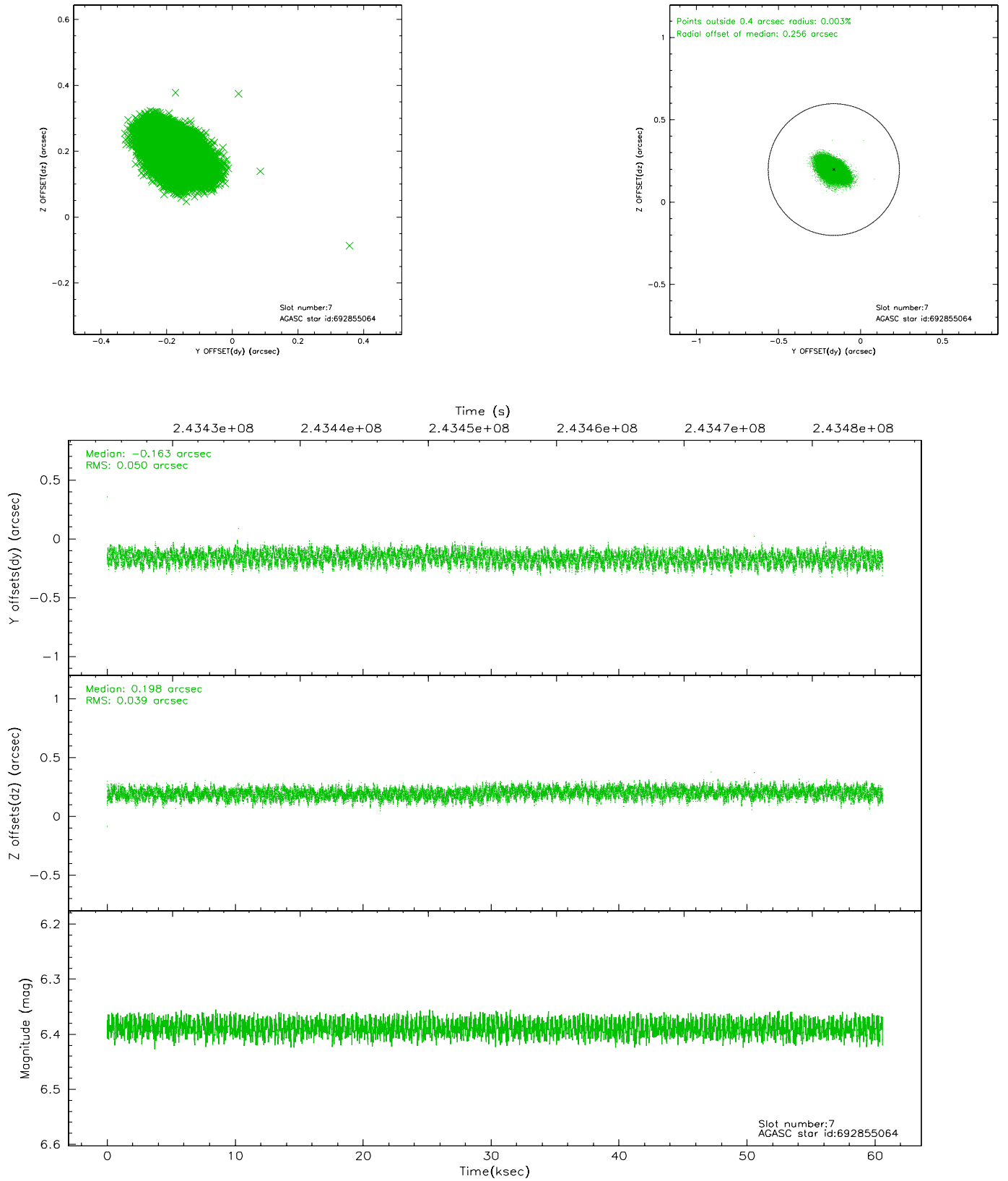
2.4.3 Slot 5



2.4.4 Slot 6

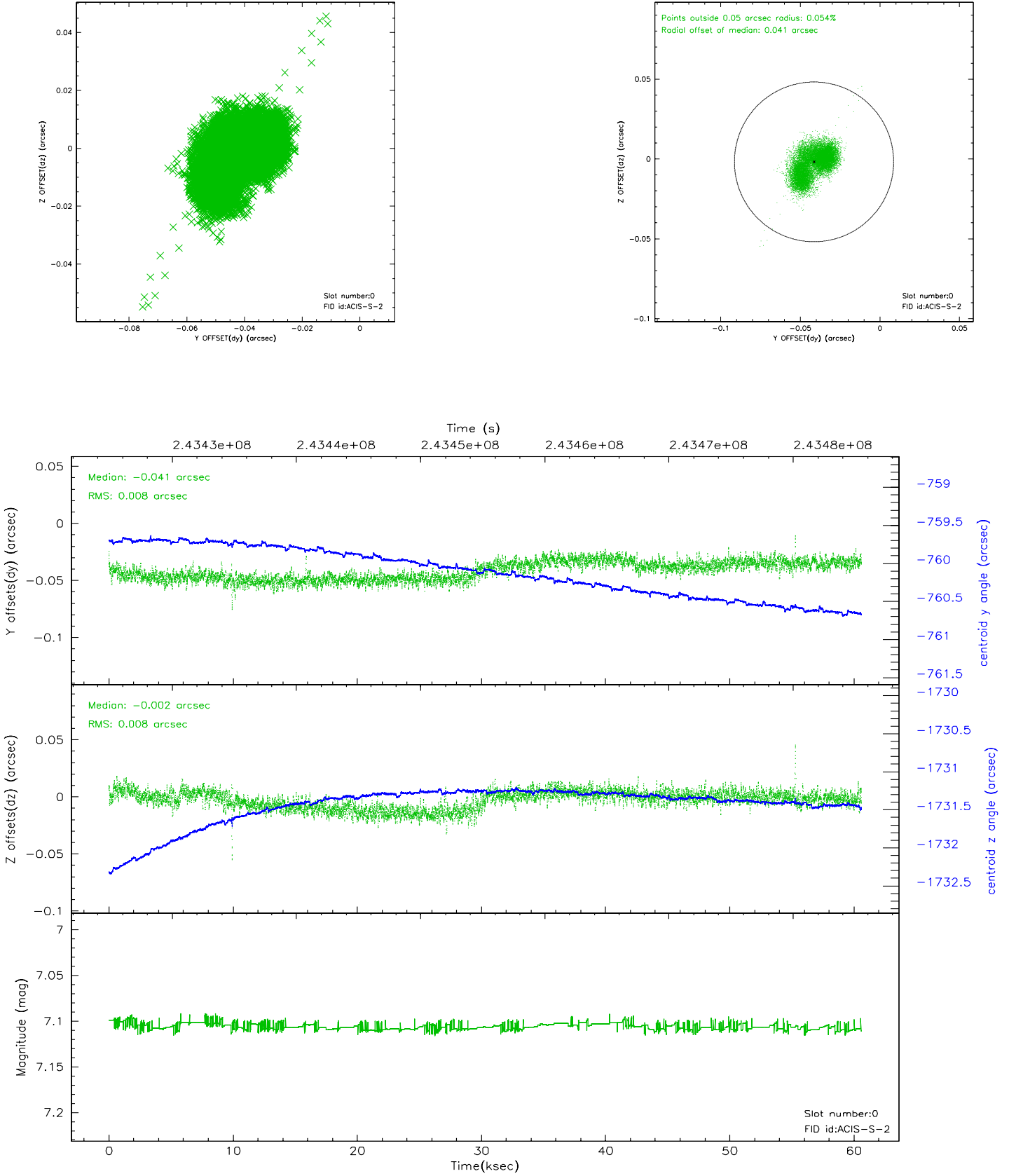


2.4.5 Slot 7

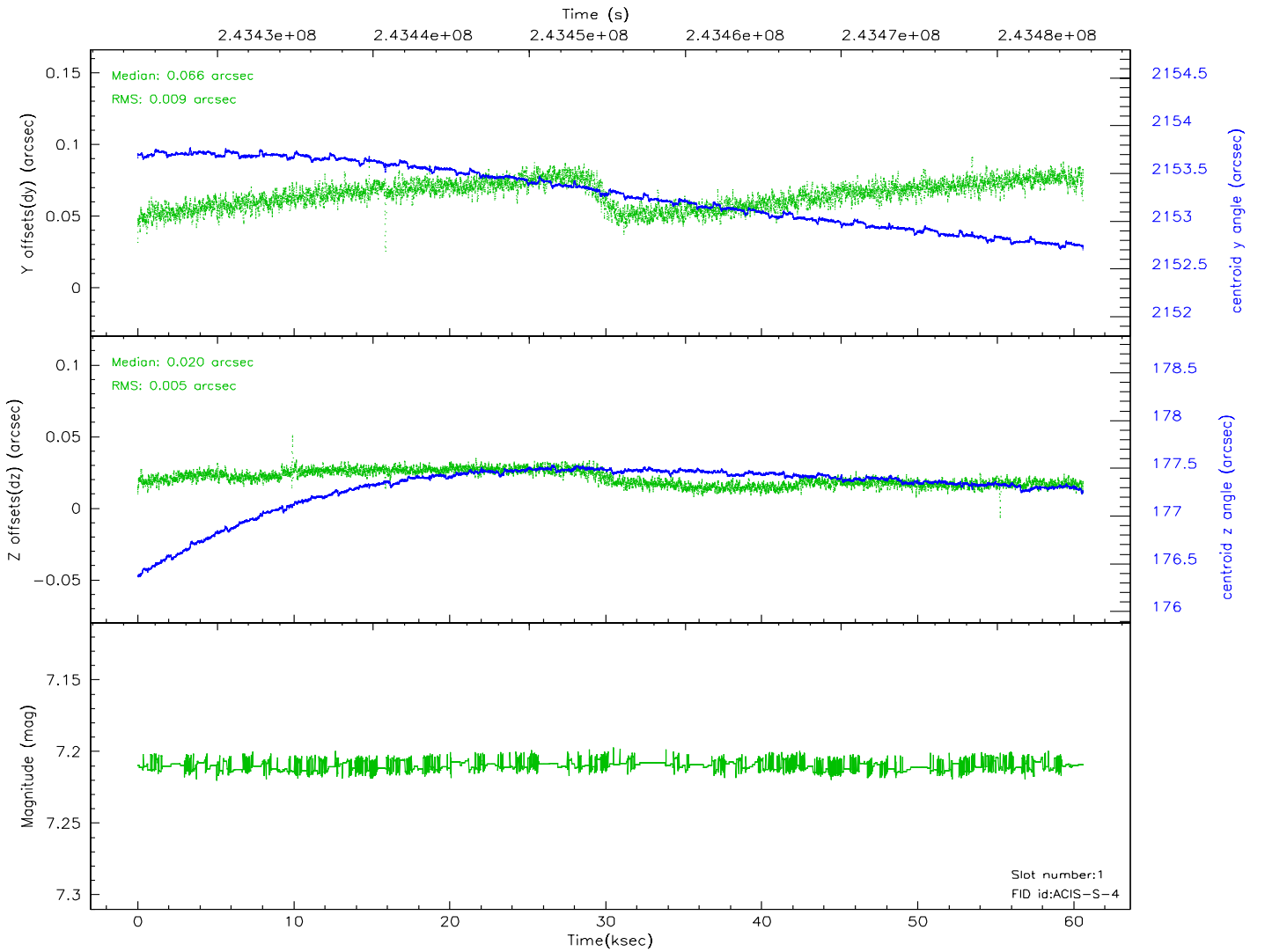
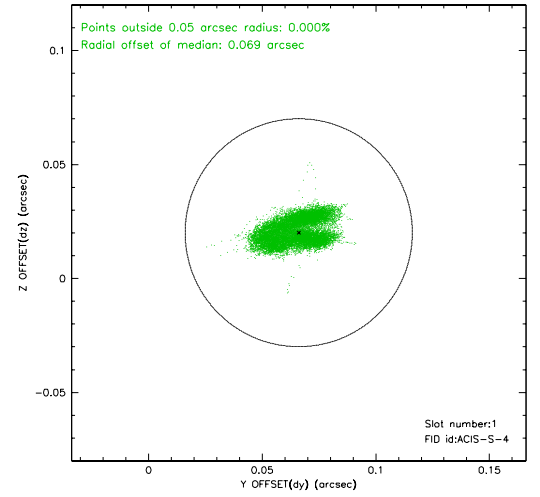
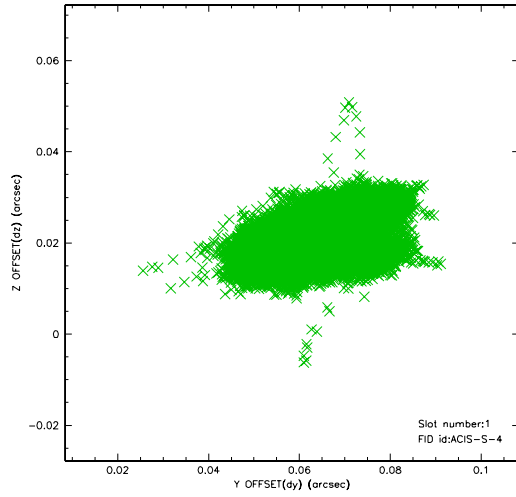


2.5 FID Slots

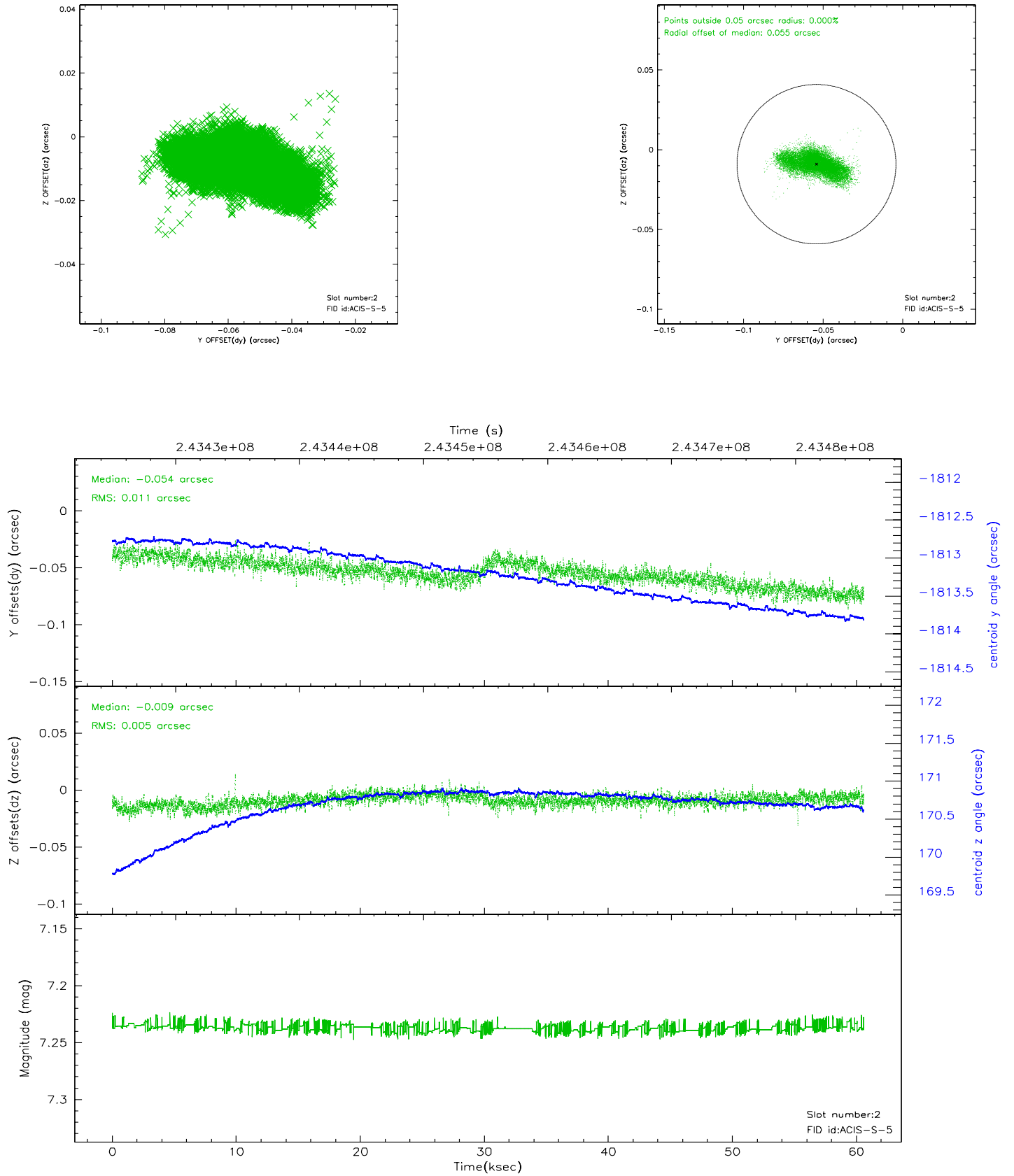
2.5.1 Slot 0



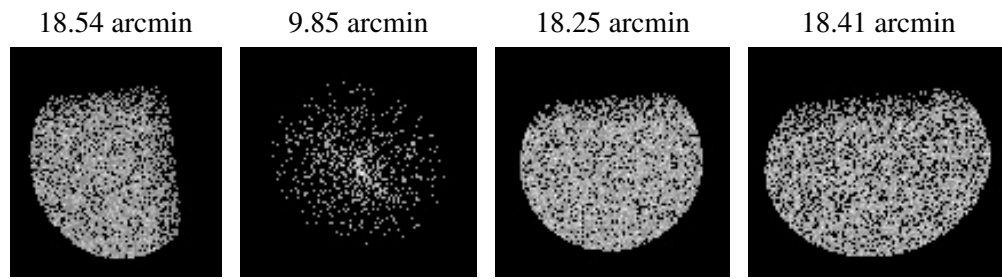
2.5.2 Slot 1



2.5.3 Slot 2



3 Point Sources



A Summary

A.1 Status

V&V Scientist	Jen Lauer
V&V Date (YYYY-MM-DD)	2006.03.26
V&V Edition	1
V&V Disposition and Status	OK
V&V Charge Time	59.95835

A.2 Comments

As a consequence of the DEA-A shutdown anomaly on Sep 15th (DOY258), the the reported value of the ACIS FP temperature was ~1.3 degrees warmer than the actual temperature. GOs should subtract 1.3 degrees from the reported temperature to determine the true temperature. In addition the FP temperature was not regulating during this period. The FP temperature fluctuated between -121.3 C and -118.8 C during this time. For analysis of line-dominated spectra from the FI CCDs, GOs might notice a systematic gain shift by up to 0.5%, either towards higher/lower energies depending on if the FP temperature was colder/warmer than -119.7 C. Analysis of line-dominated spectra on S3 are mostly unaffected (where mostly unaffected means that the changes are smaller than the current uncertainties in the calibration). Analysis of continuum-dominated spectra on both the FI and BI CCDs are mostly unaffected. Imaging analysis on both the FI and BI CCDs are mostly unaffected.