

V&V Reference Report

L2 ASCDS Version : 7.6.7

Observation 5908 - L2 Version 002
Chandra X-Ray Center

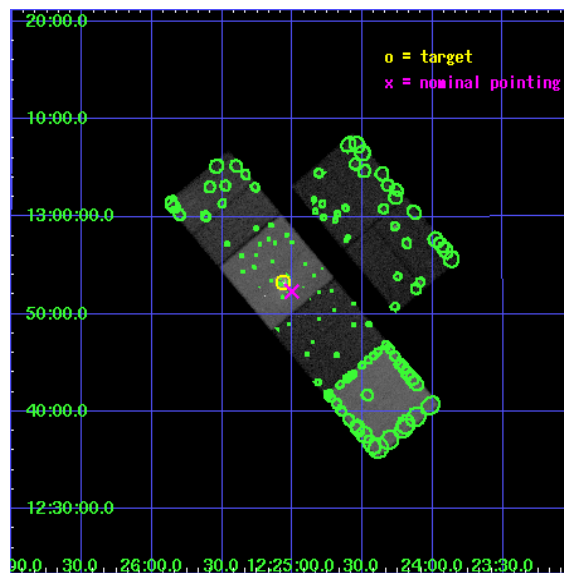
L2 Processing Date: Mar 2 2006

Contents

1	Front	2
2	OBI	3
2.1	OBI	3
2.1.1	Images	3
2.1.2	Bias	3
2.1.3	Parameters	4
2.1.4	Events	4
2.2	Compared Parameters	5
2.3	Aspect	6
2.4	Star Slots	9
2.4.1	Slot 3	9
2.4.2	Slot 4	10
2.4.3	Slot 5	11
2.4.4	Slot 6	12
2.4.5	Slot 7	13
2.5	FID Slots	14
2.5.1	Slot 0	14
2.5.2	Slot 1	15
2.5.3	Slot 2	16
3	Point Sources	17
A	Summary	18
A.1	Status	18
A.2	Comments	18

1 Front

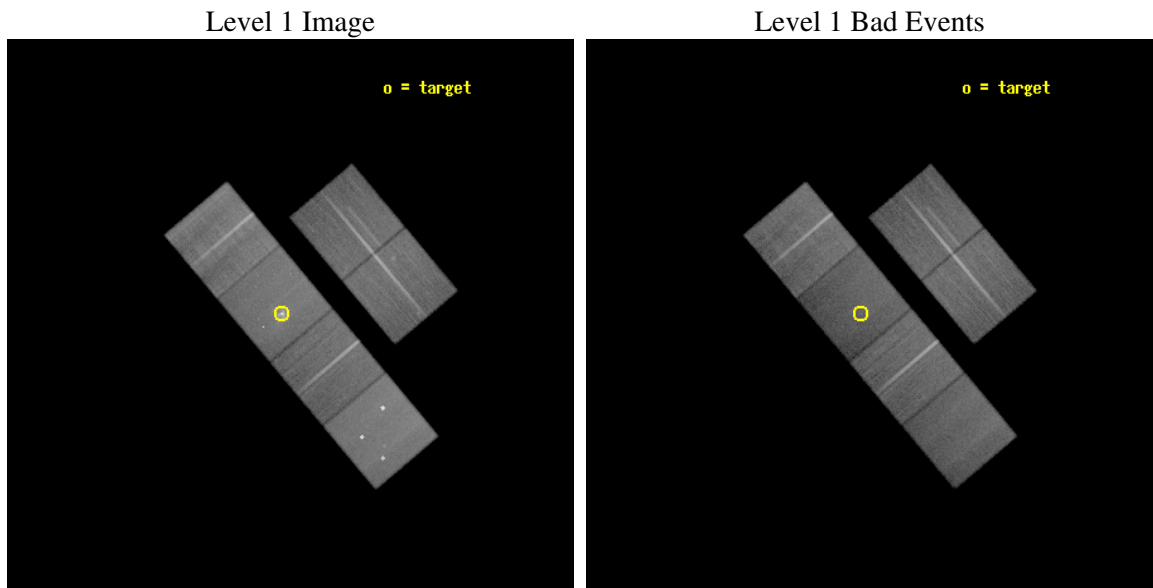
seq_num	600427
obs_id	5908
title	The Exploding Galaxies M84 and M89
observer	Dr. Christine Jones
object	M84
dtcycle	0
cycle	P
ra_targ	186.265833
dec_targ	12.886944
ra_nom	186.25081871043
dec_nom	12.872251422552
roll_nom	229.87098071687
revision	2
ontime	46675.199826121
livetime	46084.170341492
ontime2	46671.958845854
ontime3	46671.958815902
ontime5	46675.199826121
ontime6	46671.95883584
ontime7	46675.199826121
ontime8	46675.199826121
l2events	486870



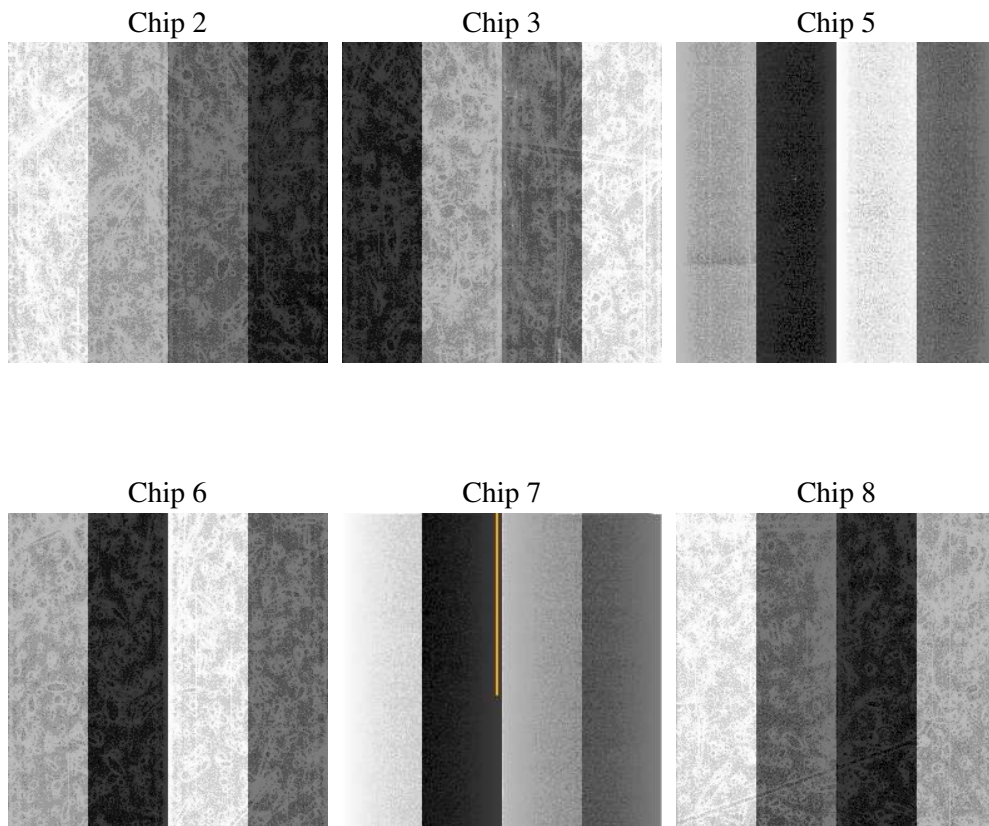
2 OBI

2.1 OBI

2.1.1 Images



2.1.2 Bias



2.1.3 Parameters

obi_num	0
ascdsver	7.6.7
caldsver	3.2.1
date	2006-03-02T13:02:25
revision	2

sched_exp_time	46500.000000
ontime	47950.77362296
ontime2	47947.532622755
ontime3	47947.532592803
ontime5	47950.77362296
ontime6	47947.532612741
ontime7	47950.77362296
ontime8	47950.773603022
l1events	2116481

2.1.4 Events

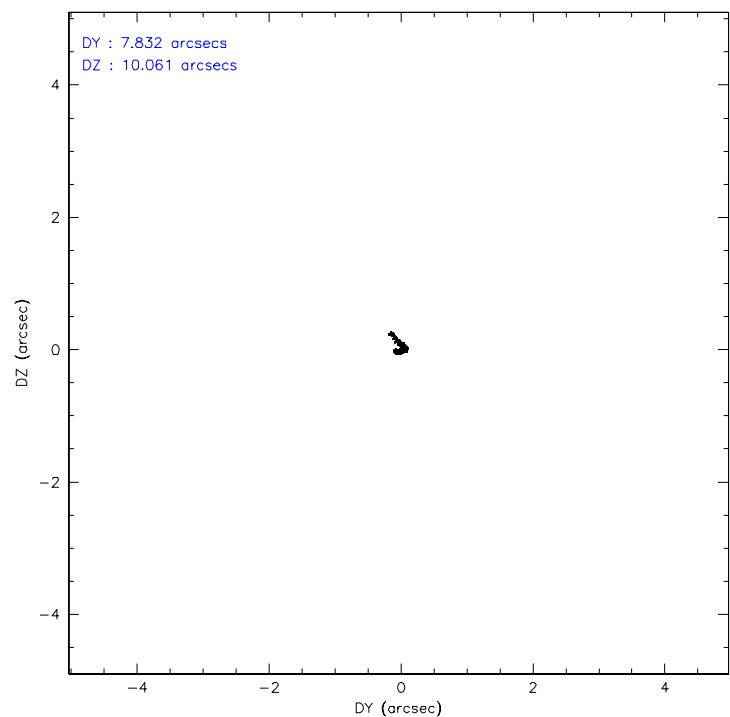
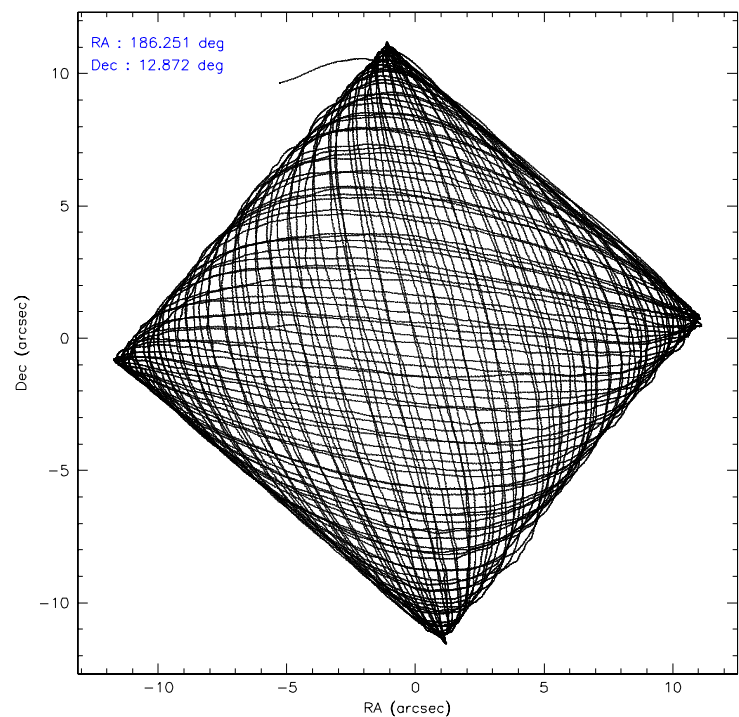
	ccd 2	ccd 3	ccd 5	ccd 6	ccd 7	ccd 8
level 1 events	320084	292218	426239	302235	373144	402561
rejected events	288451	261245	218340	267021	198055	296040
rejected %	90%	89%	51%	88%	53%	73%

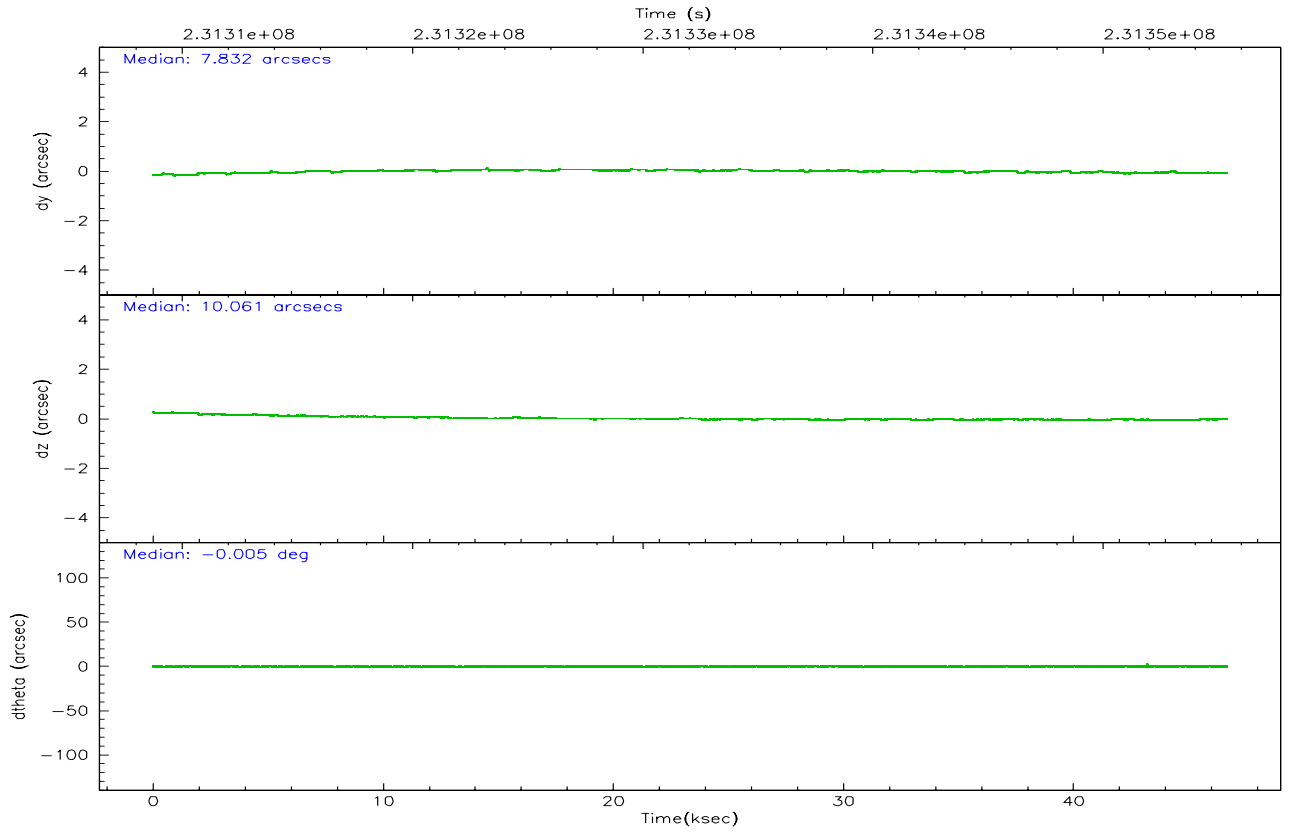
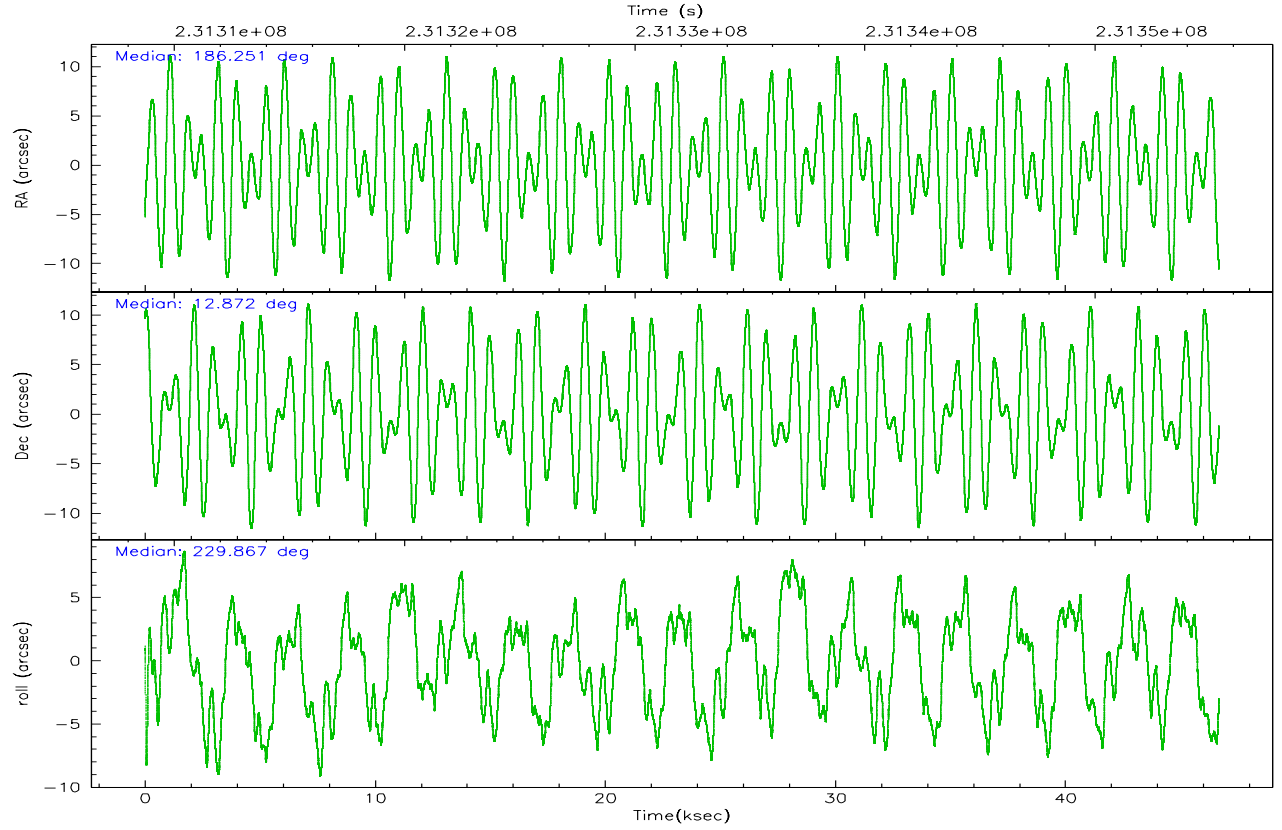
	ccd 2	ccd 3	ccd 5	ccd 6	ccd 7	ccd 8
grade 0 events	13072	13441	30539	15195	20545	45092
	4%	4%	7%	5%	5%	11%
grade 1 events	158	158	251	148	202	360
	0%	0%	0%	0%	0%	0%
grade 2 events	7220	6288	62924	7058	45750	21631
	2%	2%	14%	2%	12%	5%
grade 3 events	3246	3318	5204	3551	12698	9853
	1%	1%	1%	1%	3%	2%
grade 4 events	3371	3262	4987	3616	12123	9007
	1%	1%	1%	1%	3%	2%
grade 5 events	10185	11578	21981	12112	25728	17205
	3%	3%	5%	4%	6%	4%
grade 6 events	5532	5444	109976	6658	87918	23708
	1%	1%	25%	2%	23%	5%
grade 7 events	277300	248729	190377	253897	168180	275705
	86%	85%	44%	84%	45%	68%

2.2 Compared Parameters

Parameter	Planned	Actual	Parameter	Planned	Actual
Instrument	ACIS	ACIS	Obspar format version number	6	6
Detector	ACIS-235678	ACIS-235678	Obspar file type	PREDICTED	ACTUAL
Grating	NONE	NONE	Obspar update status	NONE	UPDATED
Data mode	VFAINT	VFAINT	On-chip summing requested	N	N
Observation mode	POINTING	POINTING	Subarray requested	NONE	NONE
Pointing RA	186.255346	186.2508187104344	Alternating exposures requested	N	N
Pointing Dec	12.899106	12.87225142255172	Primary exposure time	0.000000	3.2
Pointing Roll	229.713334	229.8709807168687			
SIM focus pos (mm)	-0.684267	-0.6828225247311905			
SIM defocus (mm)	0	0.001444936568705701			
SIM translation stage pos (mm)	-190.132523	-190.1400660498719			
SIM translation stage offset (mm)	0	0.00754346686406393			
Observation start time	231308894.184000	231307189.05726			
Observation start date	2005-05-01T04:27:10	2005-05-01T03:59:49			
Observation end time	231355394.184000	231355846.83448			
Observation end date	2005-05-01T17:22:10	2005-05-01T17:30:46			
Read mode	TIMED	TIMED			

2.3 Aspect



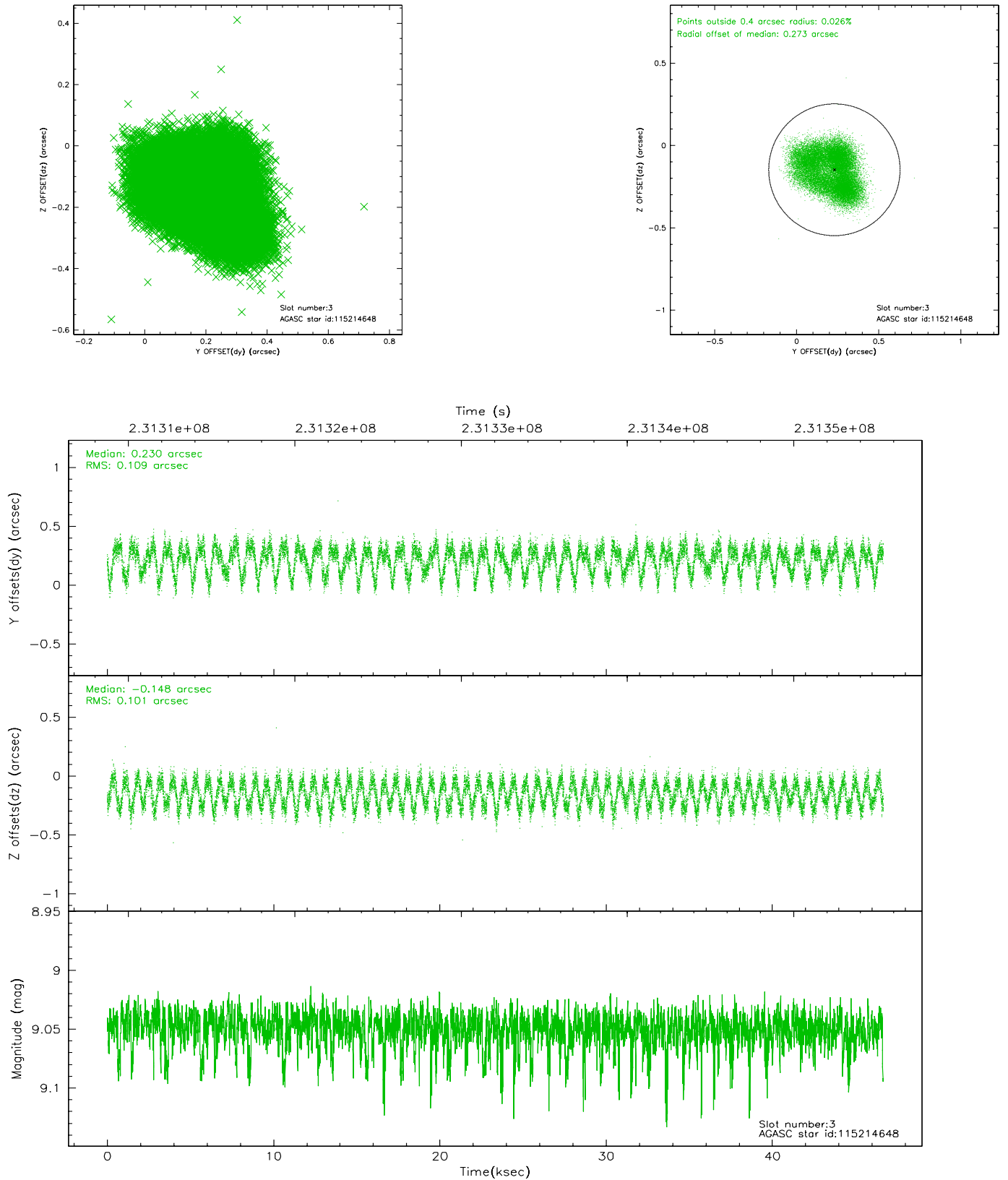


Slot Statistics

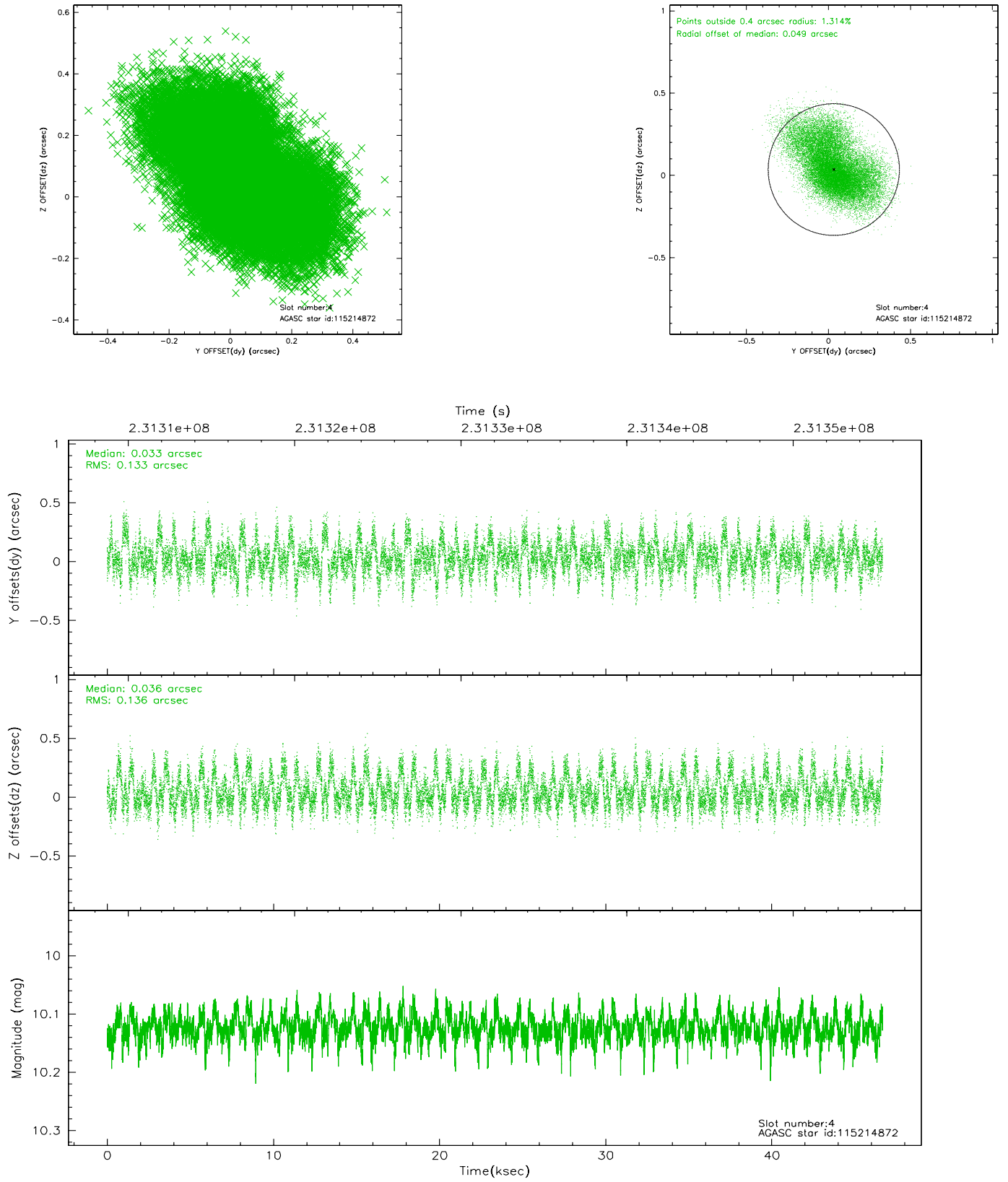
slot	status	id	mag	n_pts	med_dy	med_dz	dr1	dr2	ra	dec	mean_y	mean_z
0	FID	ACIS-S-2	7.11	11386	-0.033	0.002	0.007	0.011	0.000000	0.000000	-760.59	-1731.35
1	FID	ACIS-S-4	7.21	11384	0.065	0.015	0.006	0.012	0.000000	0.000000	2152.75	177.22
2	FID	ACIS-S-5	7.23	11384	-0.063	-0.009	0.007	0.013	0.000000	0.000000	-1813.51	170.76
3	GUIDE	115214648	9.05	22758	0.230	-0.148	0.162	0.241	185.771147	12.685188	1686.58	-800.29
4	GUIDE	115214872	10.12	22747	0.033	0.036	0.203	0.337	185.840719	12.668185	1575.54	-573.94
5	GUIDE	115215968	10.21	22673	-0.084	0.185	0.134	0.220	186.327588	13.159527	-878.47	-412.89
6	GUIDE	115347480	9.45	22753	-0.188	-0.114	0.083	0.135	186.668576	13.310410	-2066.26	145.90
7	GUIDE	115349744	10.34	22682	0.025	0.032	0.157	0.252	186.878186	12.752529	-1013.38	2007.84

2.4 Star Slots

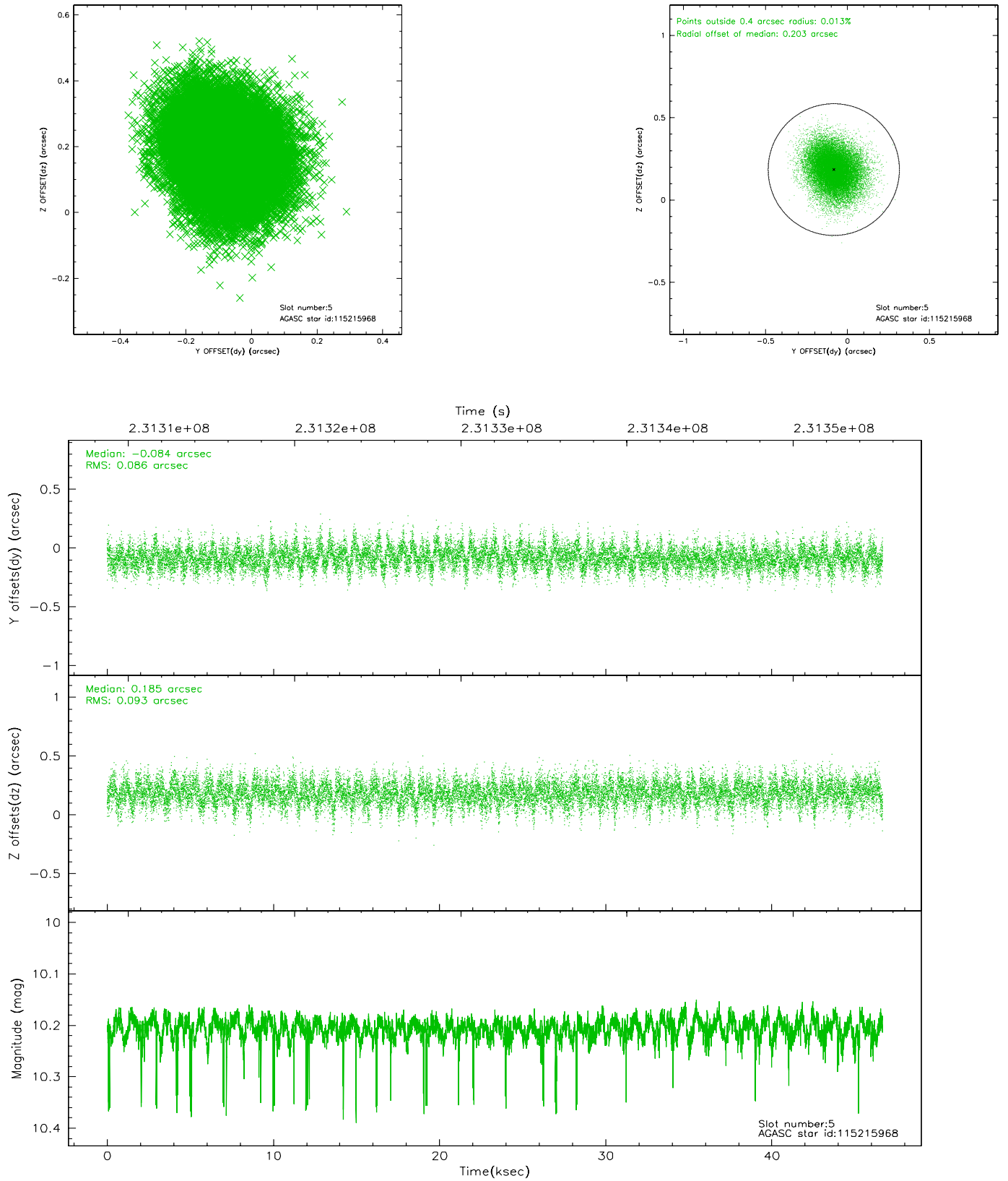
2.4.1 Slot 3



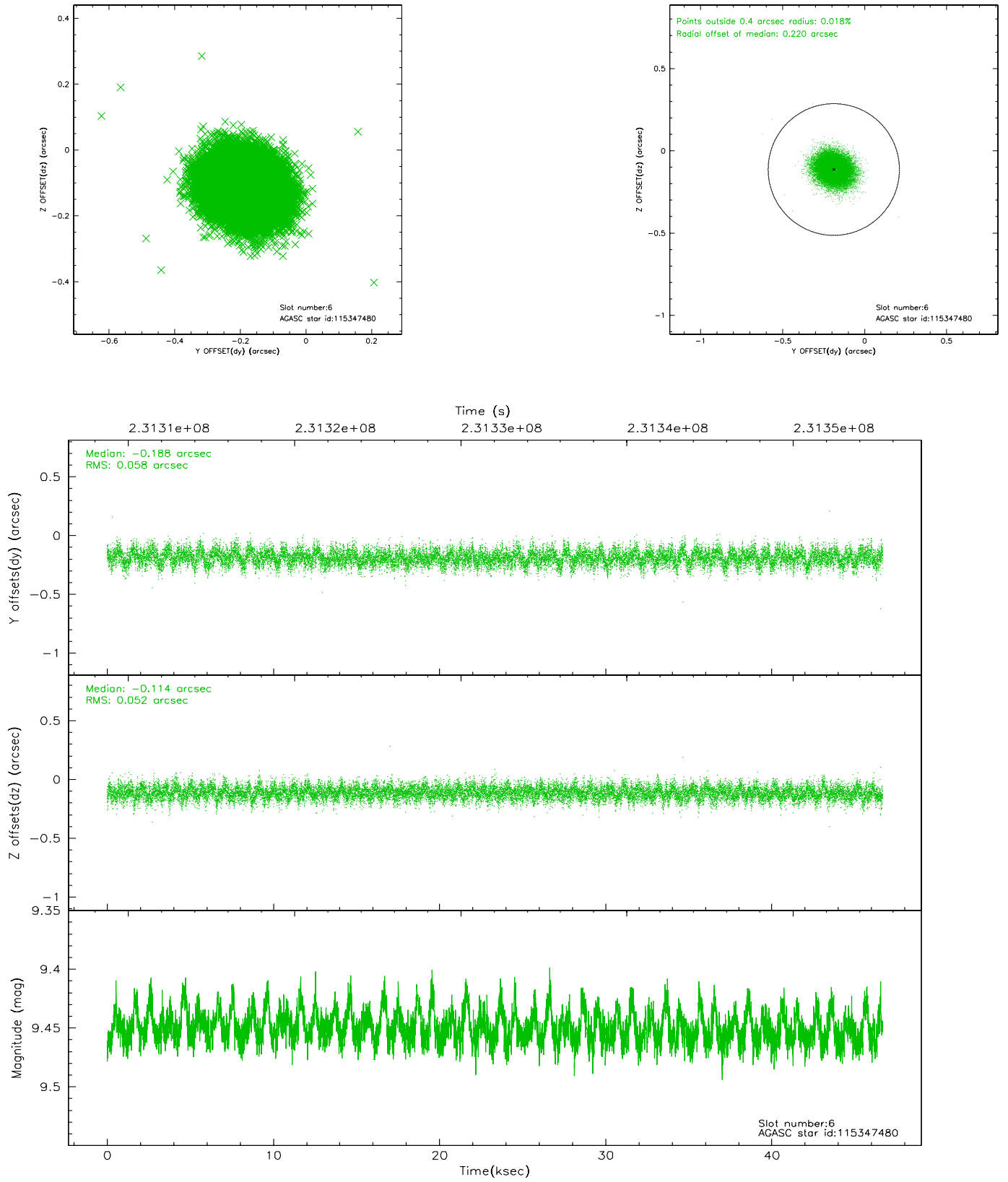
2.4.2 Slot 4



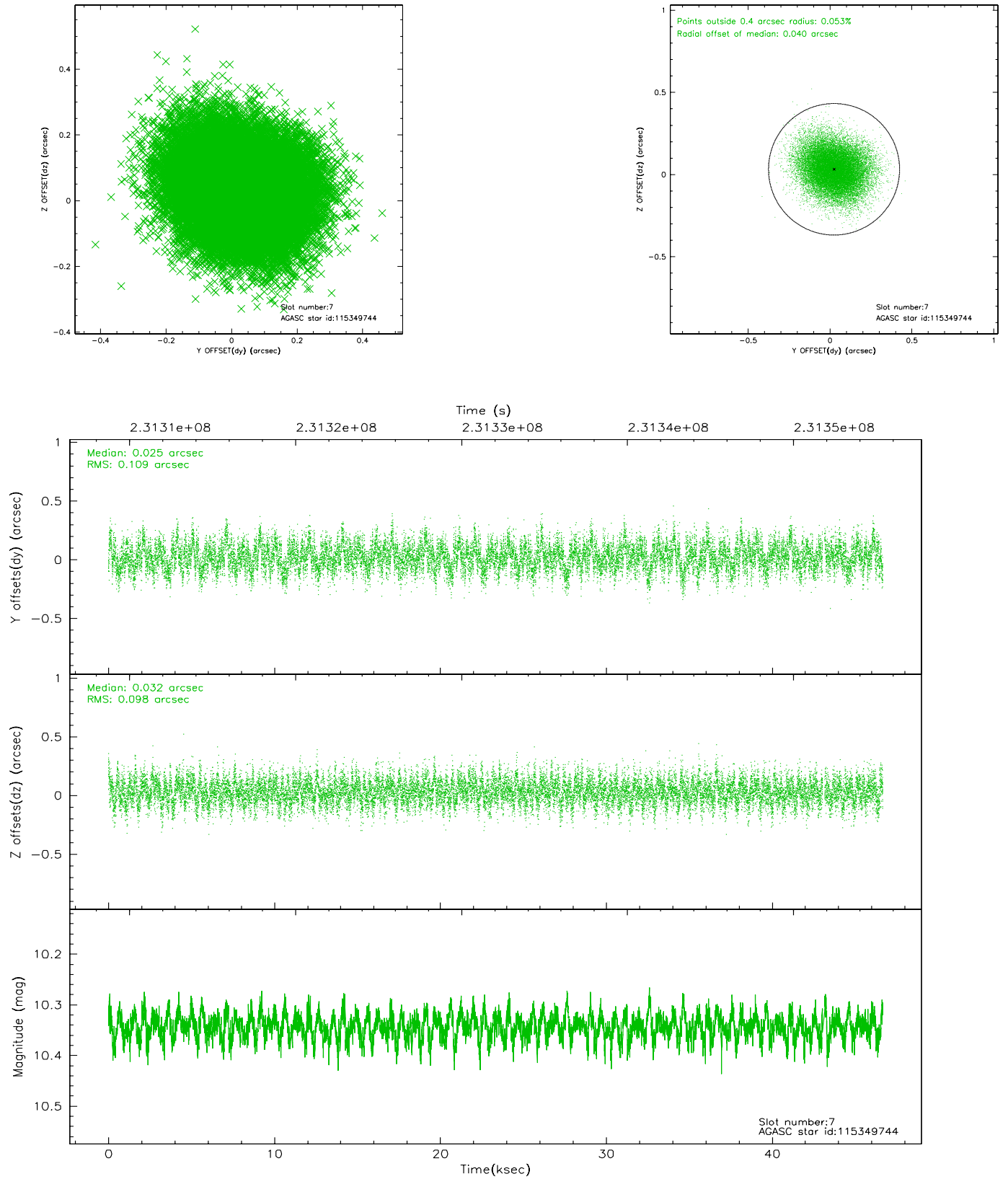
2.4.3 Slot 5



2.4.4 Slot 6

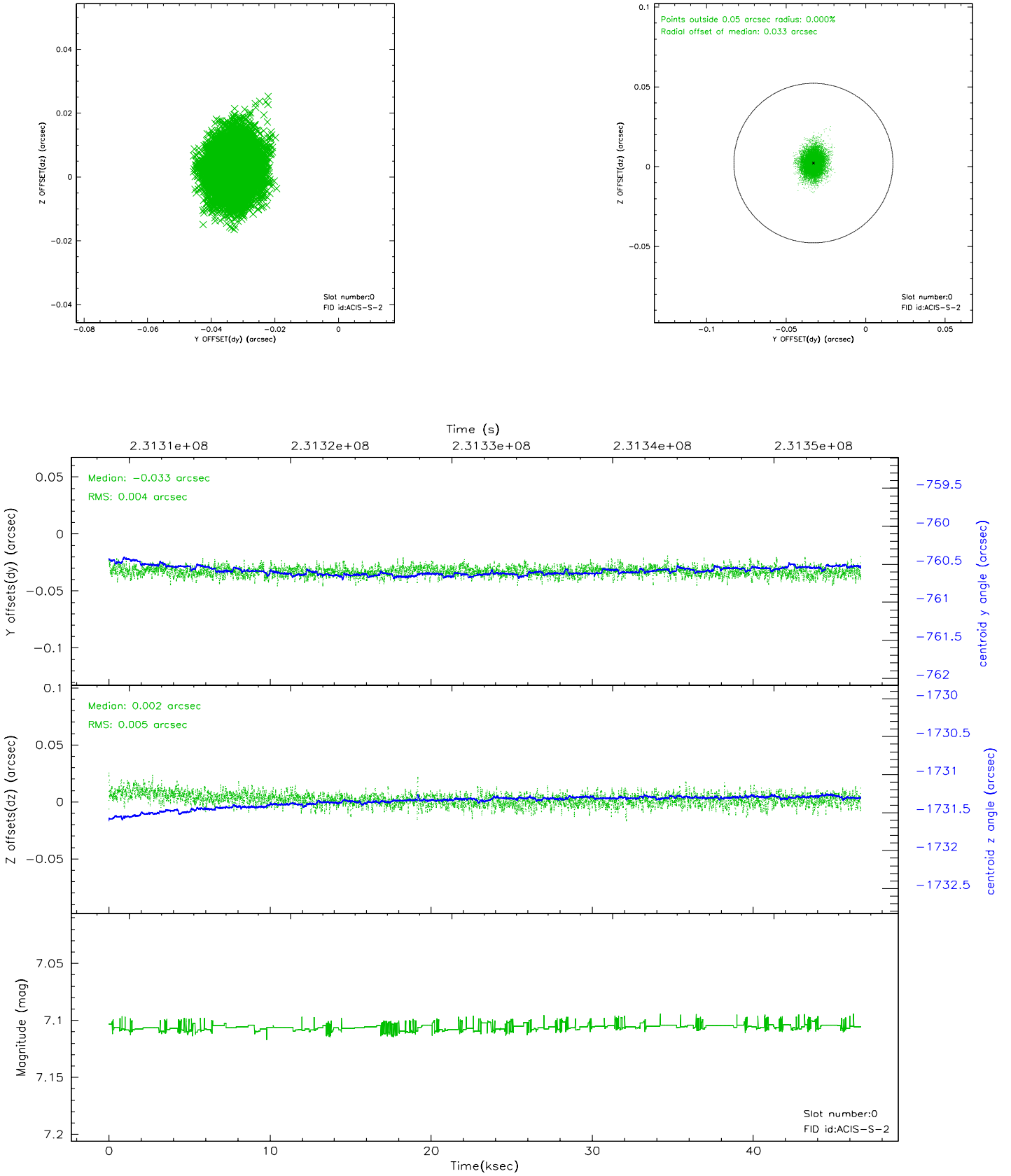


2.4.5 Slot 7

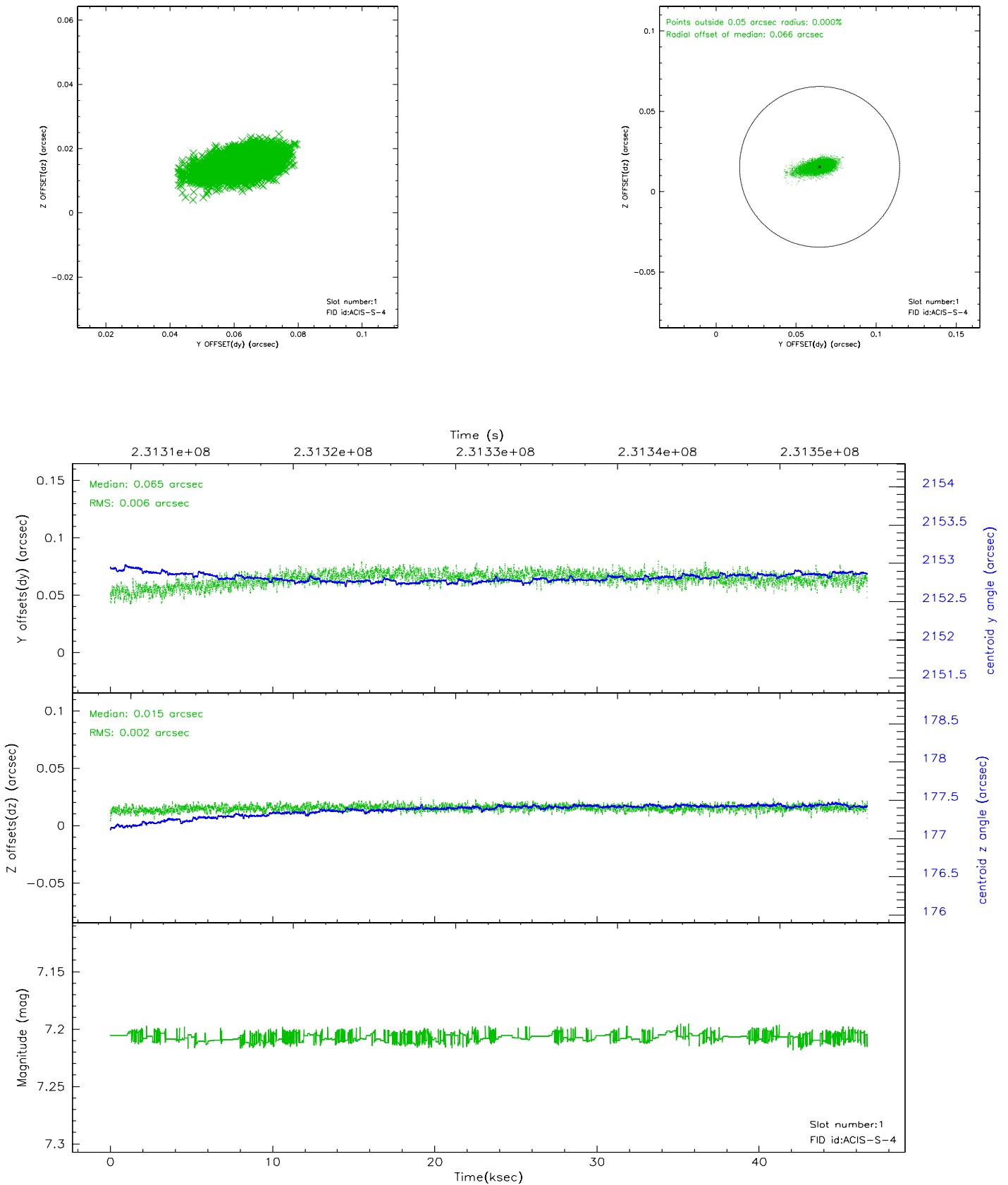


2.5 FID Slots

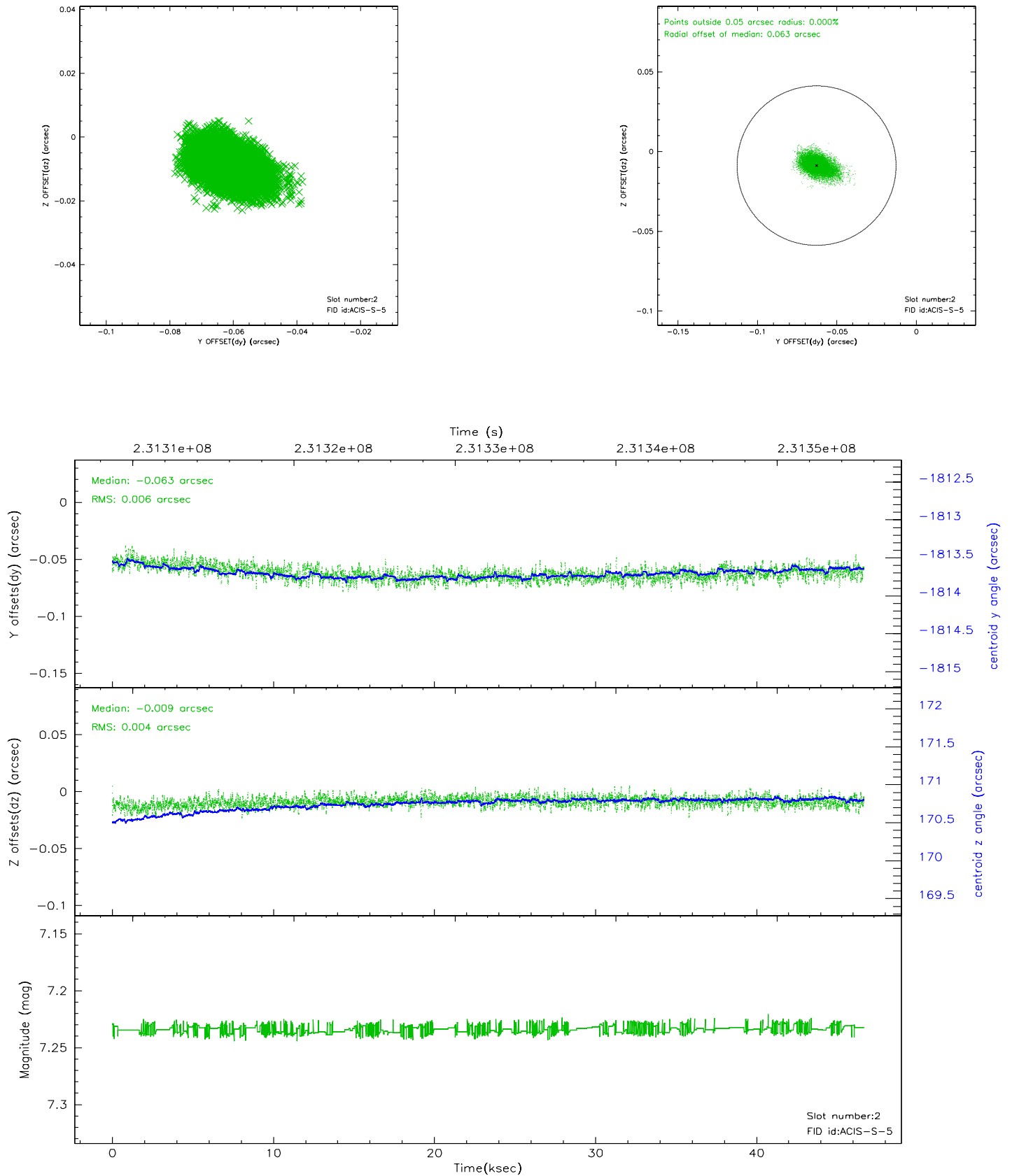
2.5.1 Slot 0



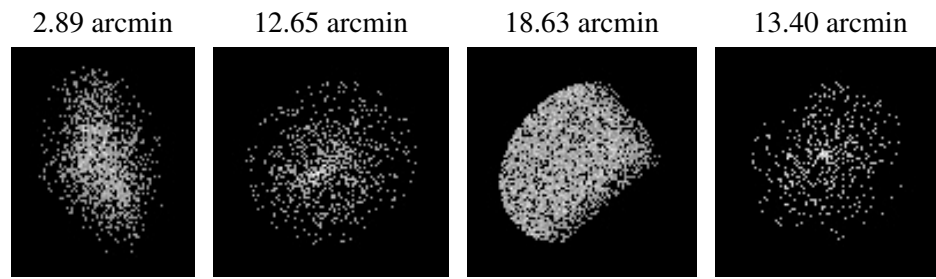
2.5.2 Slot 1



2.5.3 Slot 2



3 Point Sources



A Summary

A.1 Status

V&V Scientist	Jen Lauer
V&V Date (YYYY-MM-DD)	2006.03.02
V&V Edition	1
V&V Disposition and Status	OK
V&V Charge Time	46.67519

A.2 Comments