

V&V Reference Report

L2 ASCDS Version : 7.6.7.1

Observation 5899 - L2 Version 002
Chandra X-Ray Center

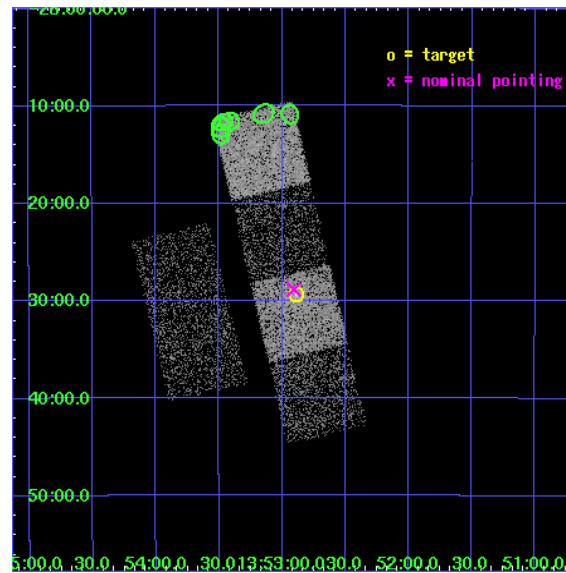
L2 Processing Date : Apr 7 2006

Contents

1	Front	2
2	OBI	3
2.1	OBI	3
2.1.1	Images	3
2.1.2	Bias	3
2.1.3	Parameters	4
2.1.4	Events	4
2.2	Compared Parameters	5
2.3	Aspect	6
2.4	Star Slots	9
2.4.1	Slot 3	9
2.4.2	Slot 4	10
2.4.3	Slot 5	11
2.4.4	Slot 6	12
2.4.5	Slot 7	13
2.5	FID Slots	14
2.5.1	Slot 0	14
2.5.2	Slot 1	15
2.5.3	Slot 2	16
3	Point Sources	17
A	Summary	18
A.1	Status	18
A.2	Comments	18

1 Front

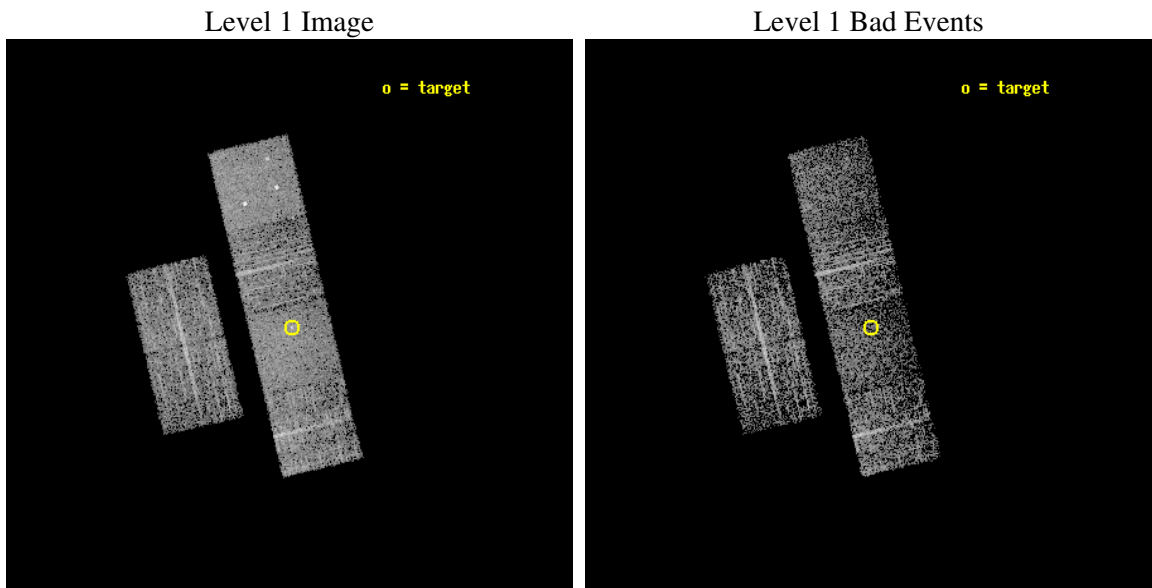
seq_num	600418
obs_id	5899
title	Snapshot Observations of X-ray Bright Early-Type Galaxies
observer	Dr. Stephen Murray
object	NGC5328
dtcycle	0
cycle	P
ra_targ	208.222083
dec_targ	-28.489444
ra_nom	208.22657571905
dec_nom	-28.480690498221
roll_nom	76.782570280315
revision	2
ontime	2630.399990201
livetime	2597.0922816883
ontime2	2630.399990201
ontime3	2630.399990201
ontime5	2630.399990201
ontime6	2630.399990201
ontime7	2630.399990201
ontime8	2630.399990201
l2events	24078



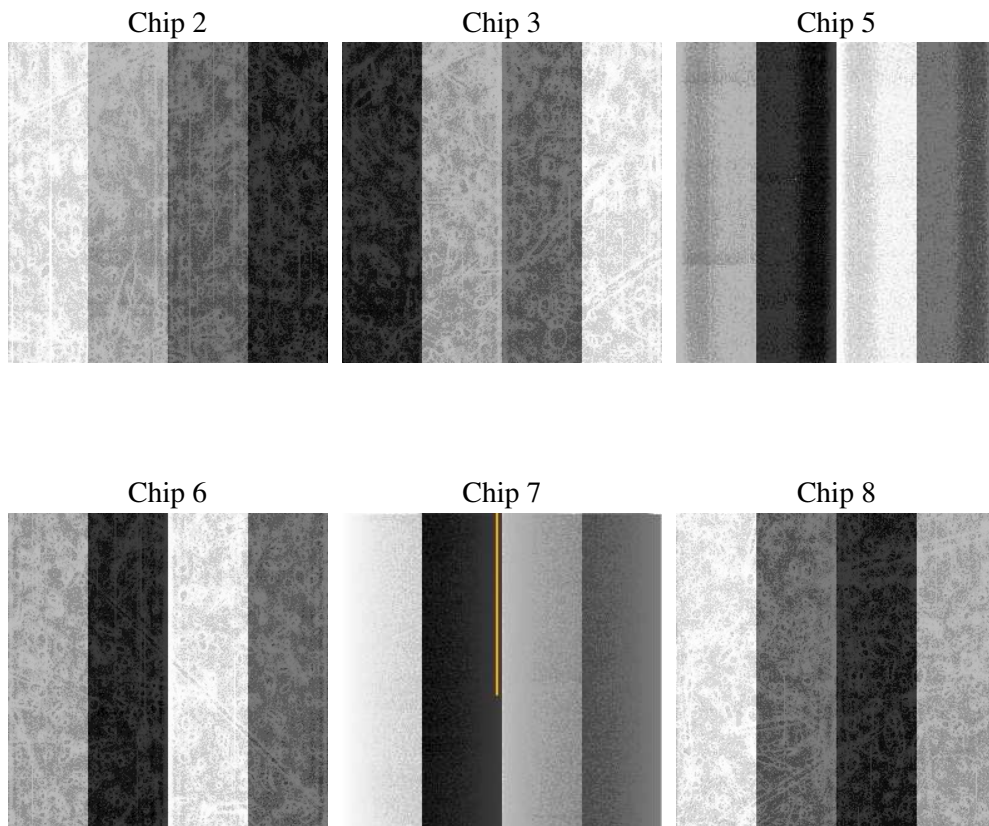
2 OBI

2.1 OBI

2.1.1 Images



2.1.2 Bias



2.1.3 Parameters

obi_num	0
ascdsver	7.6.7.1
caldbver	3.2.1
date	2006-04-07T15:10:38
revision	2

sched_exp_time	2500.000000
ontime	2835.8767579198
ontime2	2835.8767380118
ontime3	2835.8767579198
ontime5	2835.8767579198
ontime6	2835.8767579198
ontime7	2835.8767579198
ontime8	2835.8767380118
l1events	120057

2.1.4 Events

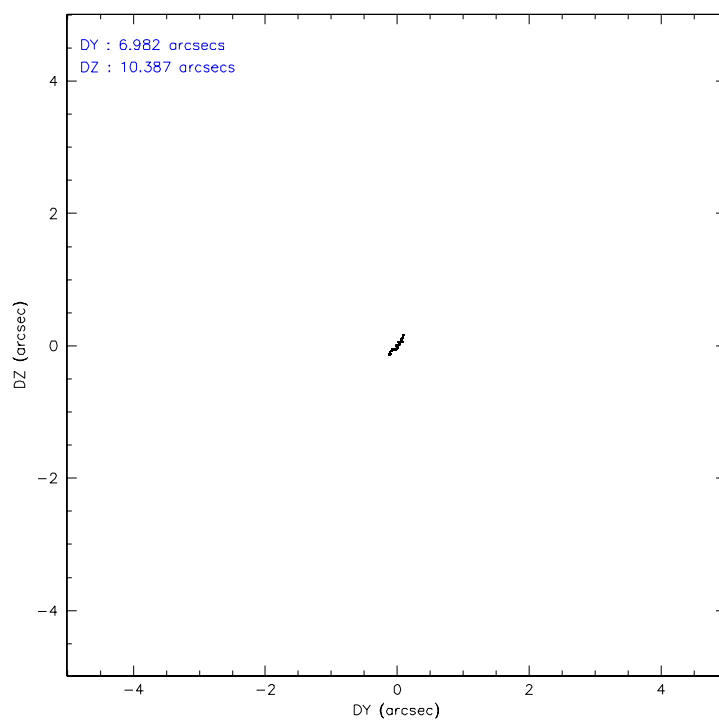
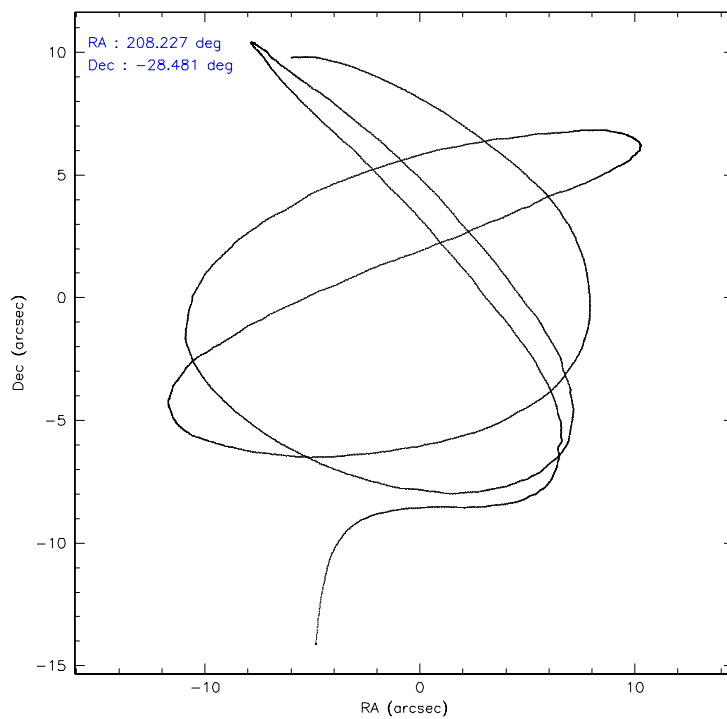
	ccd 2	ccd 3	ccd 5	ccd 6	ccd 7	ccd 8
level 1 events	18568	16880	24292	18545	20330	21442
rejected events	16925	15330	13092	16761	11936	16788
rejected %	91%	90%	53%	90%	58%	78%

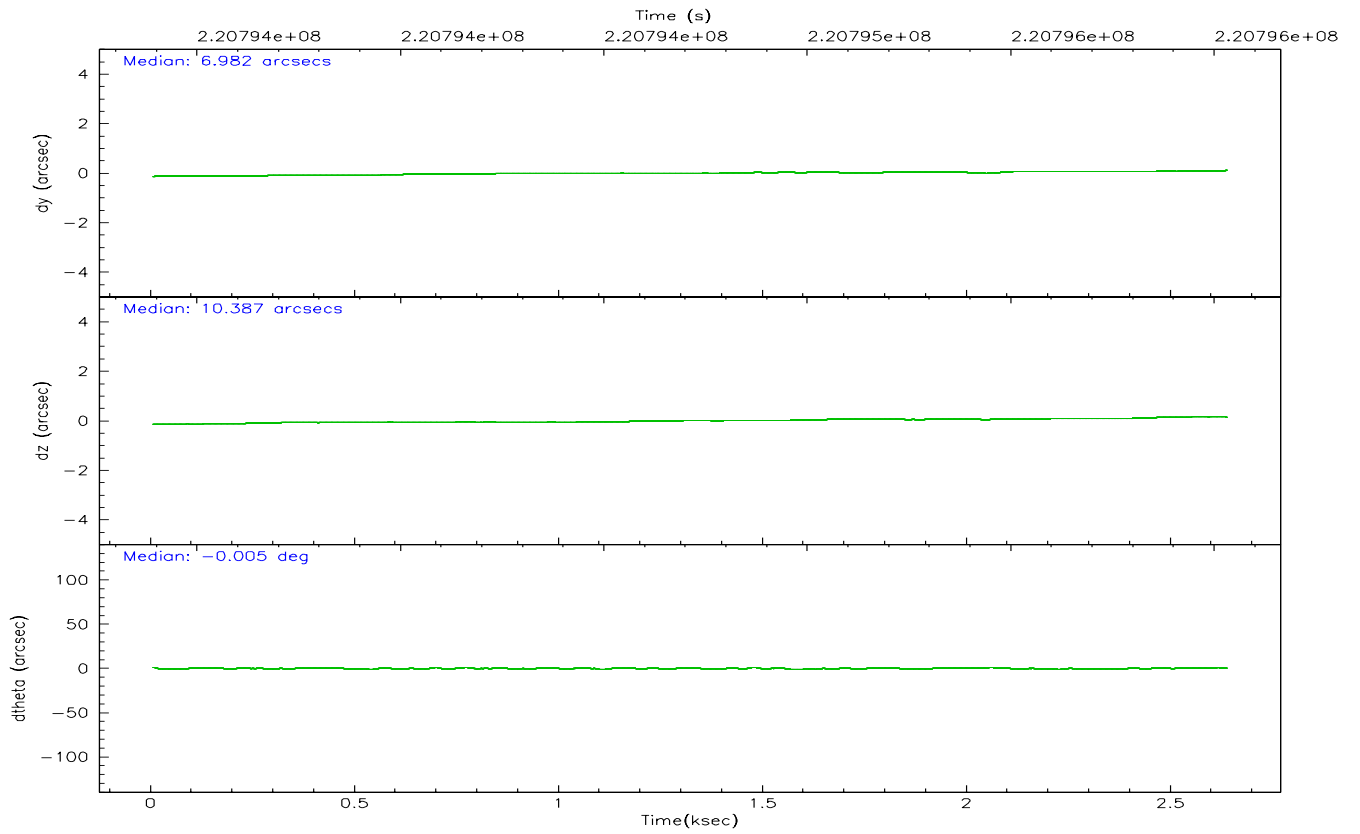
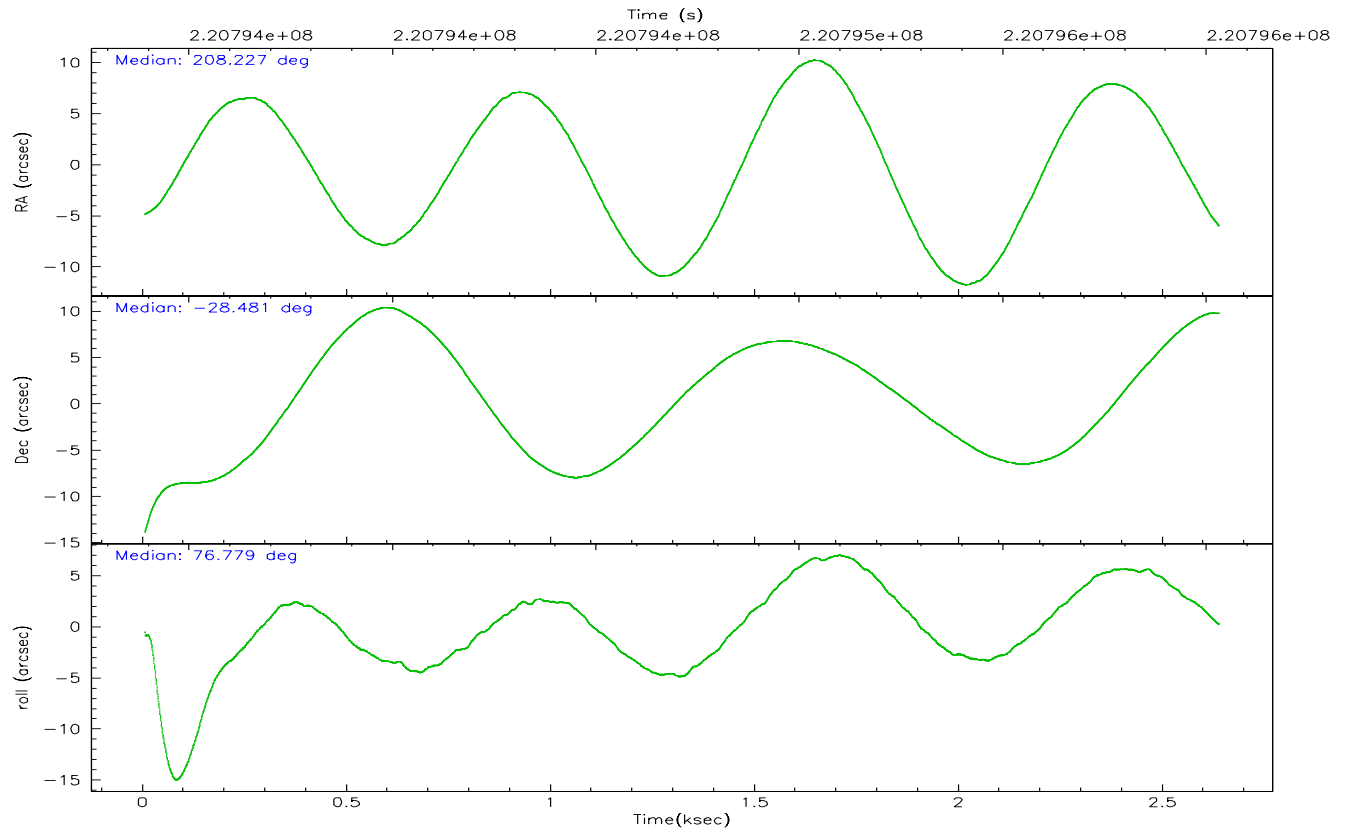
	ccd 2	ccd 3	ccd 5	ccd 6	ccd 7	ccd 8
grade 0 events	685	604	1614	693	818	1636
	3%	3%	6%	3%	4%	7%
grade 1 events	12	6	34	13	13	14
	0%	0%	0%	0%	0%	0%
grade 2 events	400	342	3451	405	2290	1088
	2%	2%	14%	2%	11%	5%
grade 3 events	178	196	313	208	548	594
	0%	1%	1%	1%	2%	2%
grade 4 events	175	189	316	197	548	526
	0%	1%	1%	1%	2%	2%
grade 5 events	582	644	1237	717	1434	1015
	3%	3%	5%	3%	7%	4%
grade 6 events	337	333	6346	409	4845	1212
	1%	1%	26%	2%	23%	5%
grade 7 events	16199	14566	10981	15903	9834	15357
	87%	86%	45%	85%	48%	71%

2.2 Compared Parameters

Parameter	Planned	Actual	Parameter	Planned	Actual
Instrument	ACIS	ACIS	Obspar format version number	6	6
Detector	ACIS-235678	ACIS-235678	Obspar file type	PREDICTED	ACTUAL
Grating	NONE	NONE	Obspar update status	NONE	UPDATED
Data mode	VFAINT	VFAINT	On-chip summing requested	N	N
Observation mode	POINTING	POINTING	Subarray requested	NONE	NONE
Pointing RA	208.235788	208.2265757190501	Alternating exposures requested	N	N
Pointing Dec	-28.506531	-28.48069049822135	Primary exposure time	0.000000	3.2
Pointing Roll	76.630261	76.78257028031481			
SIM focus pos (mm)	-0.684267	-0.6828225247311905			
SIM defocus (mm)	0	0.001444936568705701			
SIM translation stage pos (mm)	-190.132523	-190.1400660498719			
SIM translation stage offset (mm)	0	0.00754346686406393			
Observation start time	220793533.184000	220792385.98104			
Observation start date	2004-12-30T11:31:09	2004-12-30T11:13:05			
Observation end time	220796033.184000	220796987.20624			
Observation end date	2004-12-30T12:12:49	2004-12-30T12:29:47			
Read mode	TIMED	TIMED			

2.3 Aspect



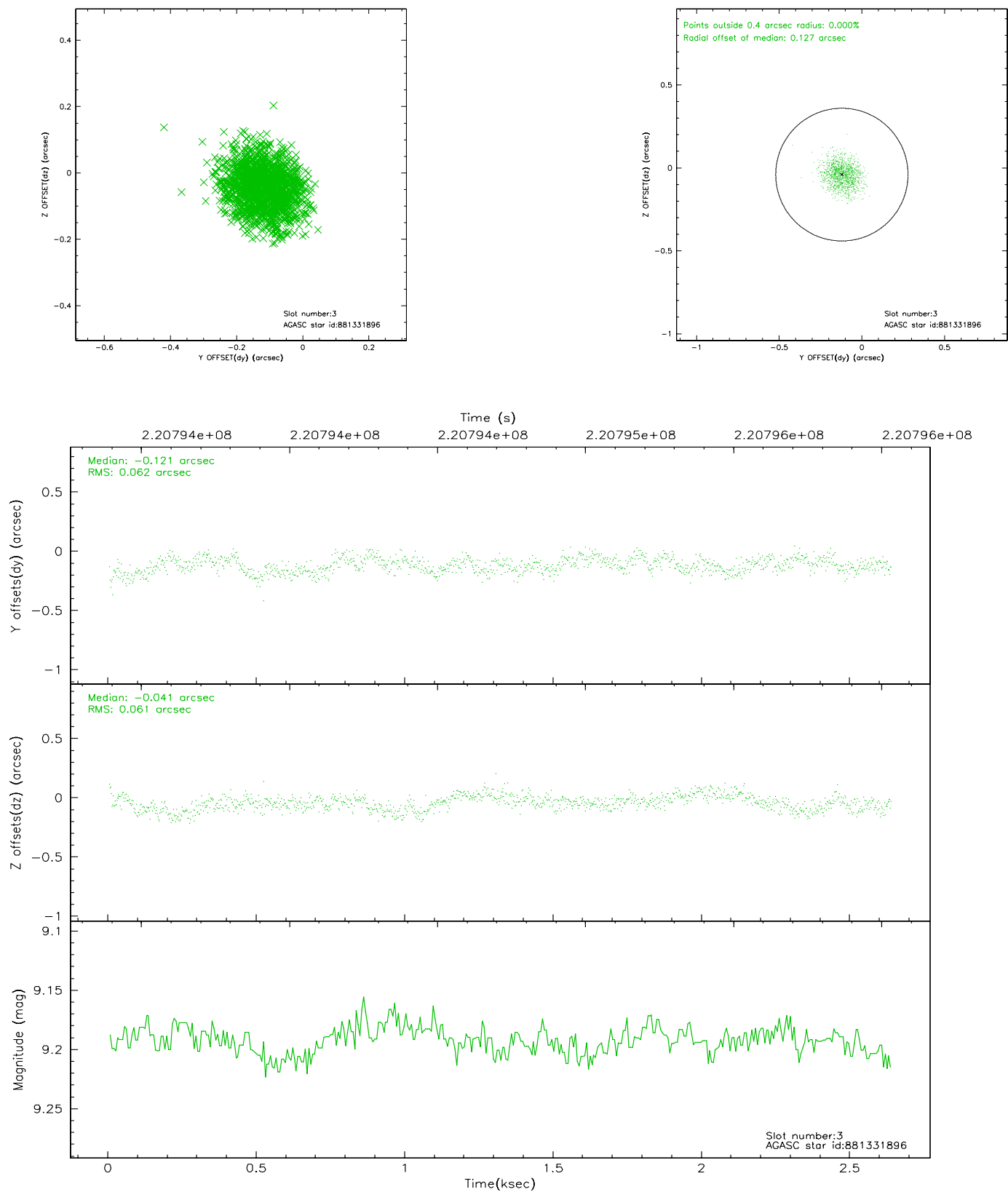


Slot Statistics

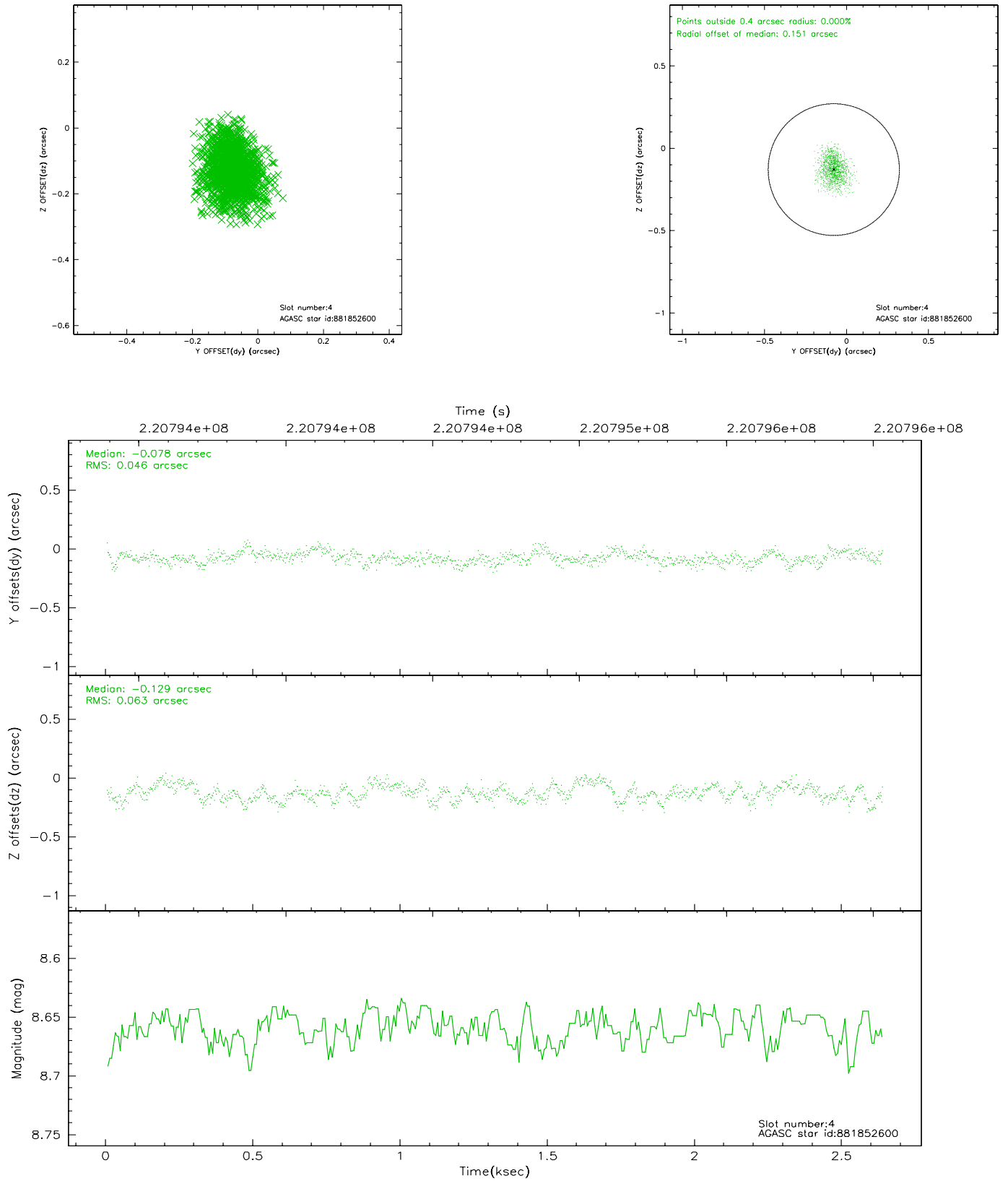
slot	status	id	mag	n_pts	med_dy	med_dz	dr1	dr2	ra	dec	mean_y	mean_z
0	FID	ACIS-S-2	7.11	643	-0.047	0.001	0.006	0.011	0.000000	0.000000	-759.74	-1731.66
1	FID	ACIS-S-4	7.21	643	0.046	0.023	0.004	0.007	0.000000	0.000000	2152.48	174.37
2	FID	ACIS-S-5	7.23	643	-0.030	-0.015	0.006	0.010	0.000000	0.000000	-1809.46	170.71
3	GUIDE	881331896	9.19	1284	-0.121	-0.041	0.094	0.147	208.238634	-28.067179	1541.10	357.57
4	GUIDE	881852600	8.66	1286	-0.078	-0.129	0.084	0.134	207.689782	-28.312019	277.98	1845.33
5	GUIDE	881854992	9.59	1283	0.139	0.339	0.096	0.155	208.326458	-28.613739	-308.70	-365.67
6	GUIDE	881857144	9.10	1286	0.114	-0.141	0.096	0.146	207.451250	-28.639742	-1047.72	2298.97
7	GUIDE	881328568	8.18	1285	-0.066	-0.023	0.072	0.114	207.726842	-27.707144	2420.58	2245.68

2.4 Star Slots

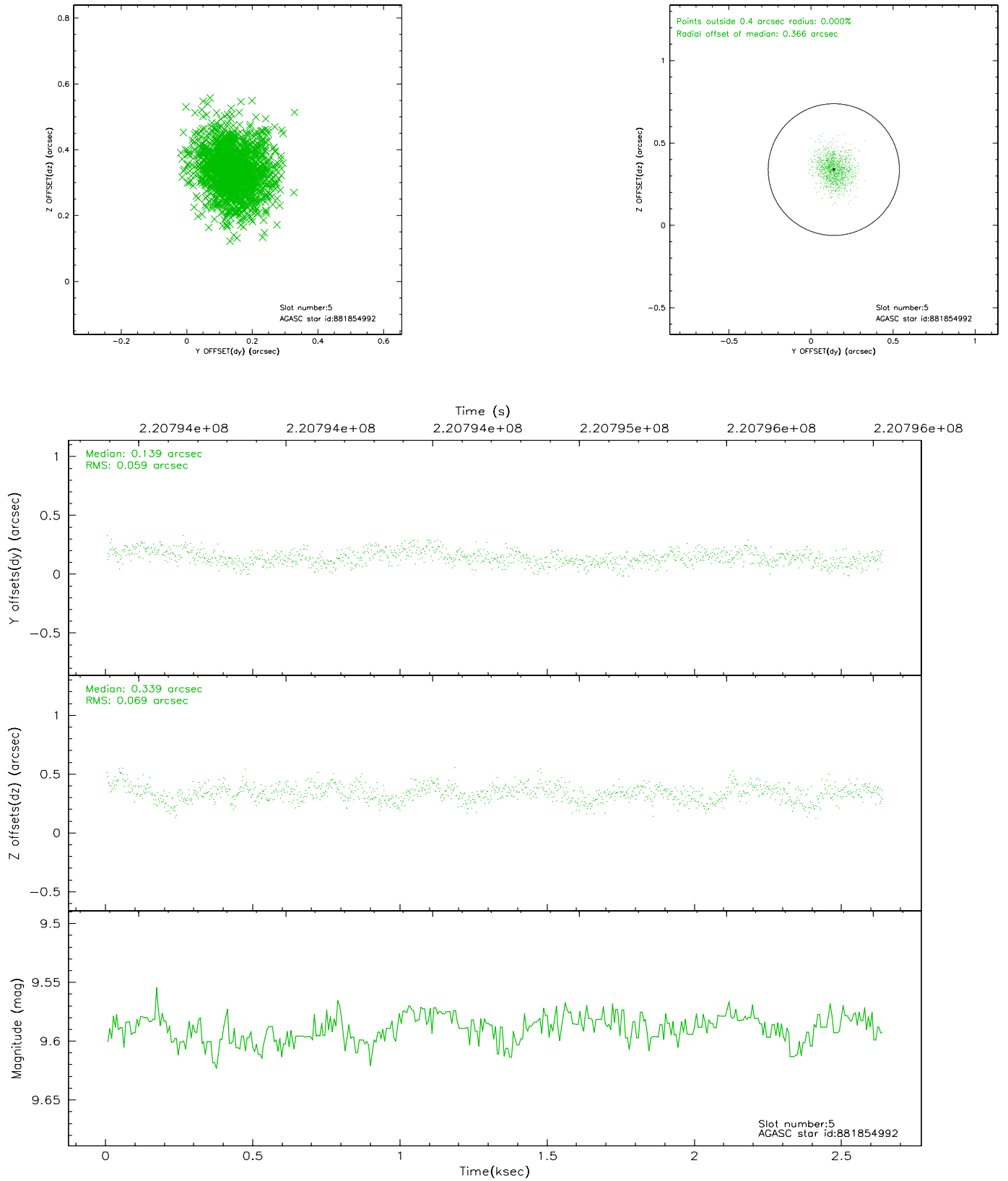
2.4.1 Slot 3



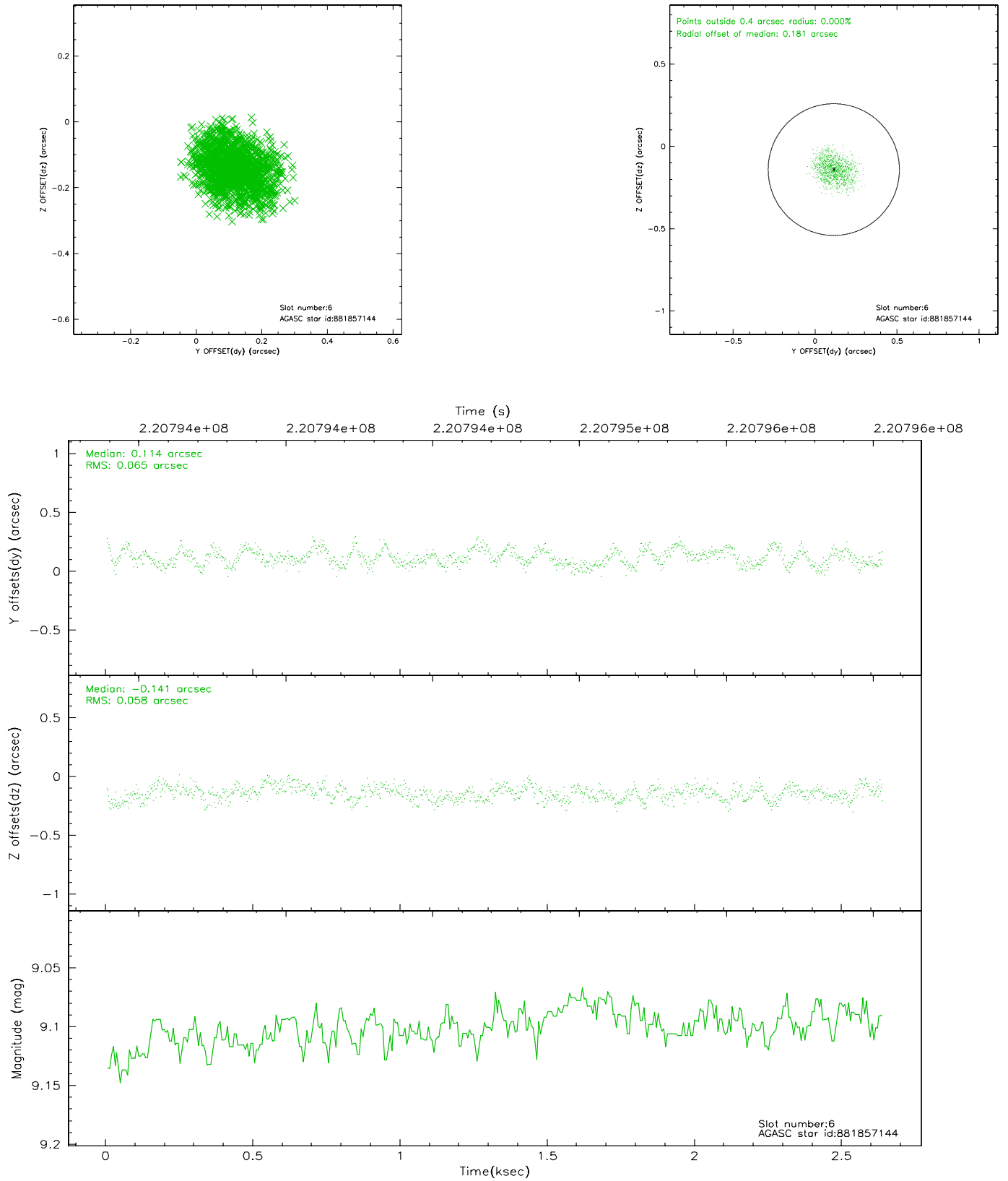
2.4.2 Slot 4



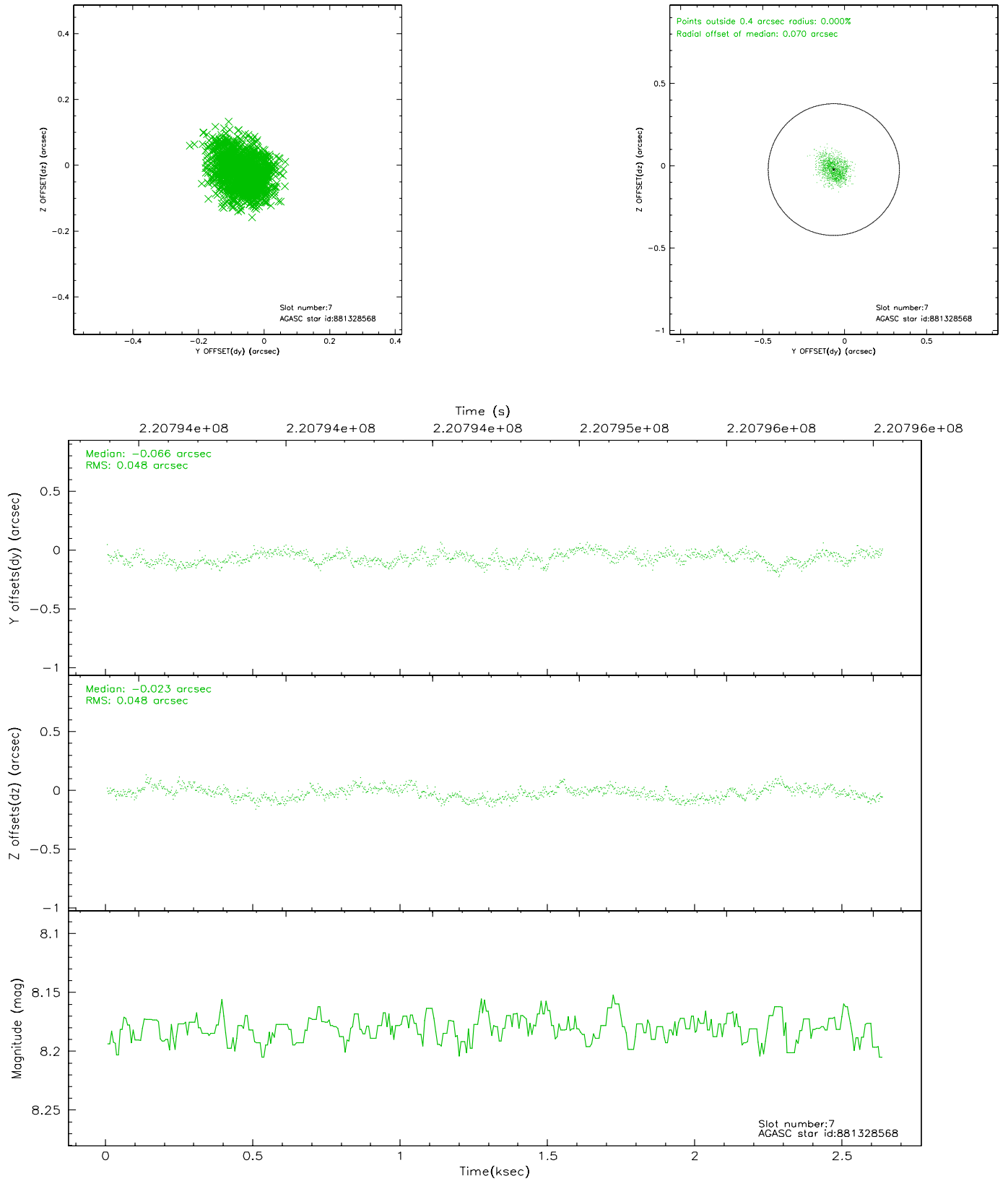
2.4.3 Slot 5



2.4.4 Slot 6

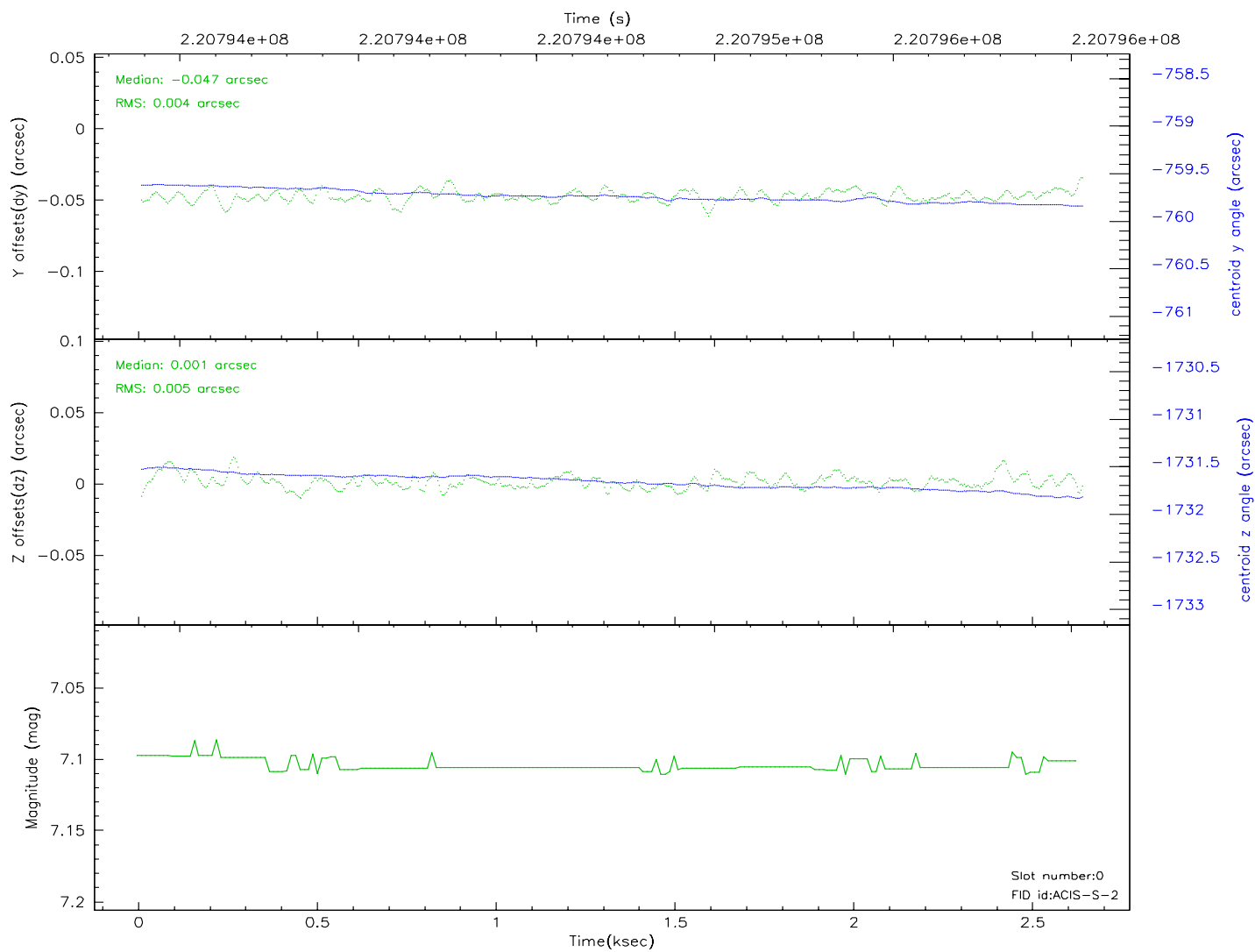
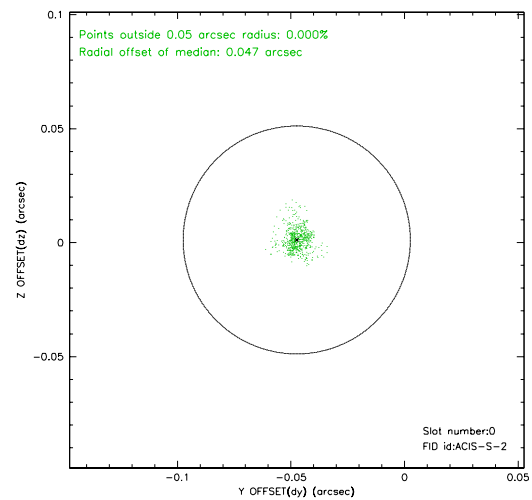
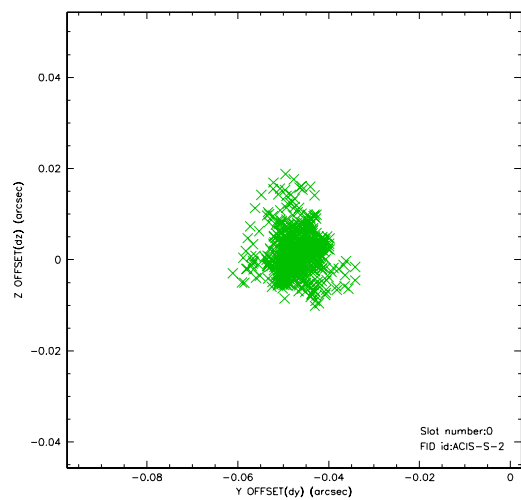


2.4.5 Slot 7

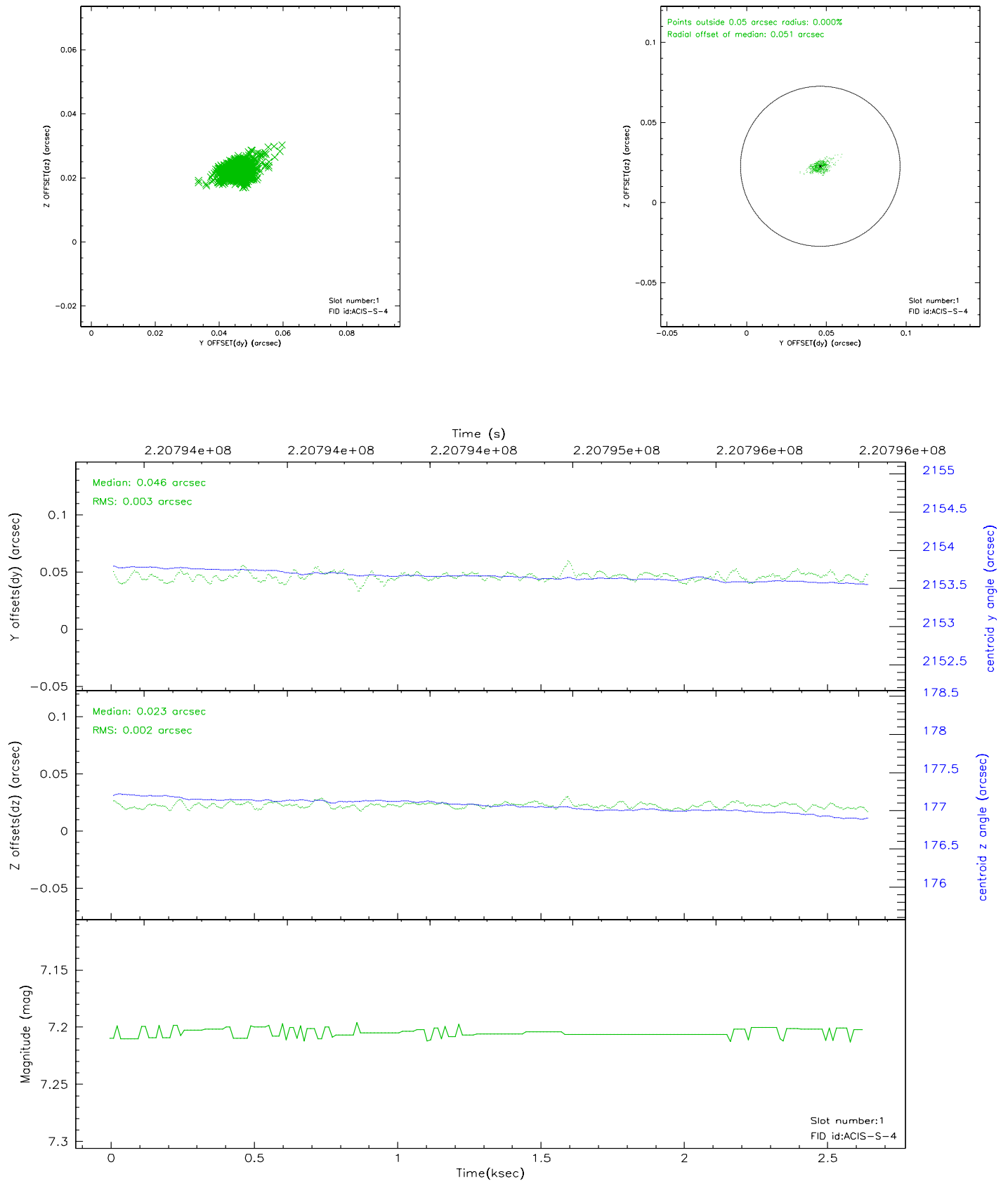


2.5 FID Slots

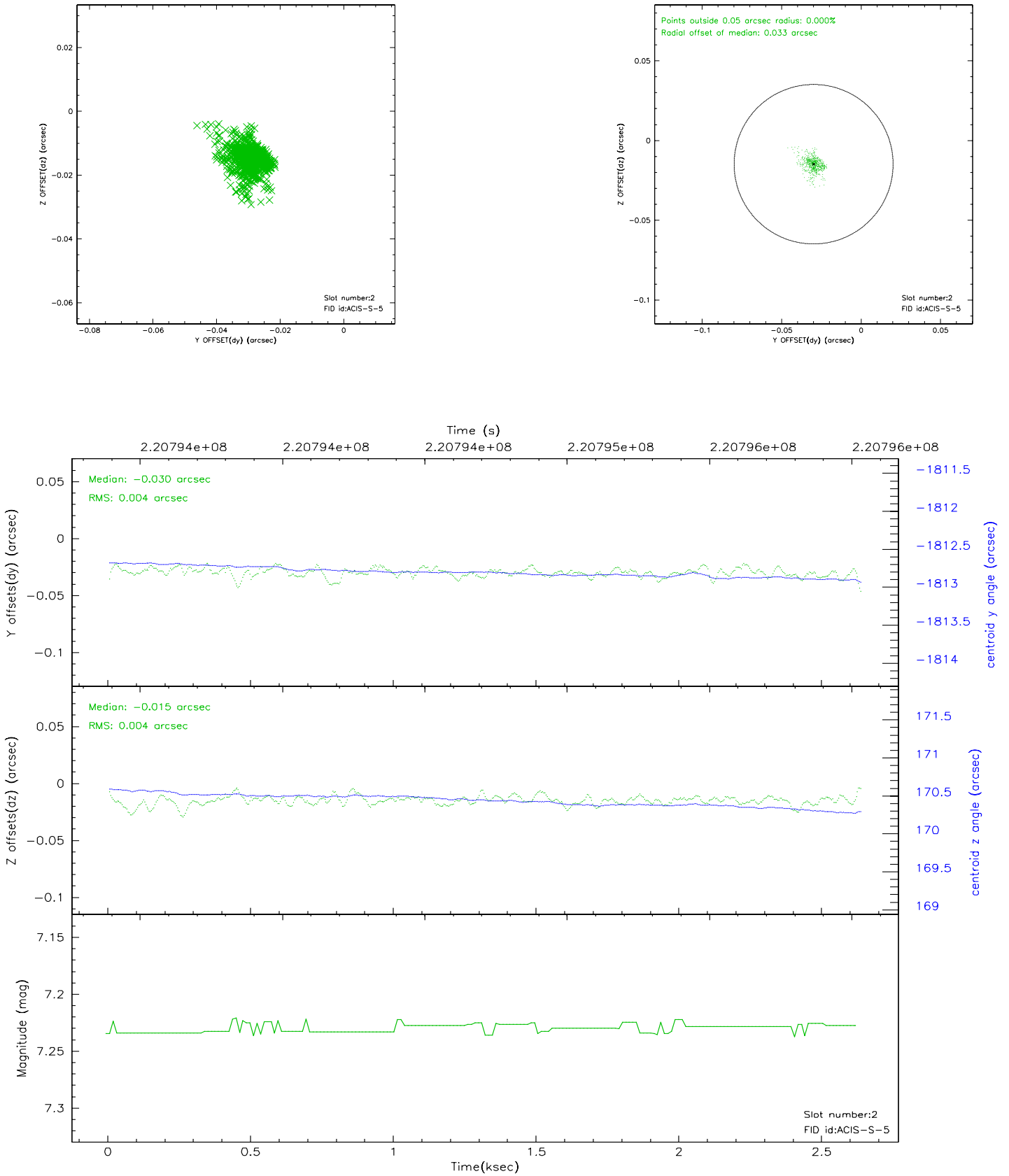
2.5.1 Slot 0



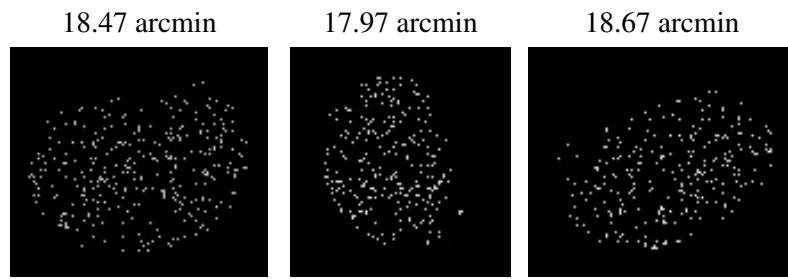
2.5.2 Slot 1



2.5.3 Slot 2



3 Point Sources



A Summary

A.1 Status

V&V Scientist	Beth Sundheim
V&V Date (YYYY-MM-DD)	2006.04.07
V&V Edition	1
V&V Disposition and Status	OK
V&V Charge Time	2.630399

A.2 Comments