

V&V Reference Report

L2 ASCDS Version : 8.4.3

Observation 7245 - L2 Version 3
Chandra X-Ray Center

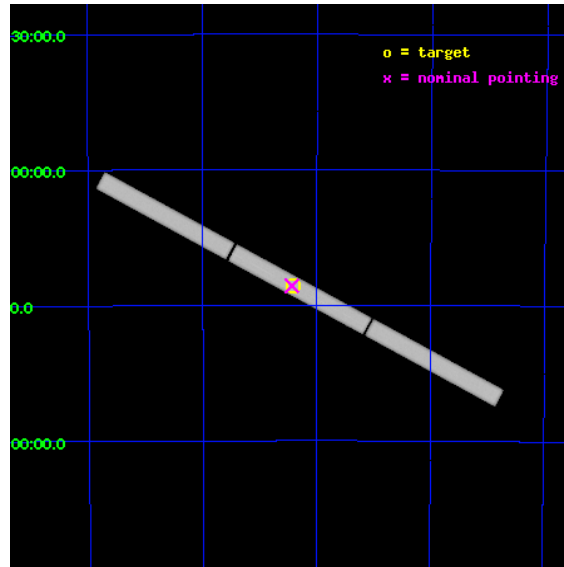
L2 Processing Date : Aug 10 2012

Contents

1	Front	2
2	OBI	3
2.1	OBI	3
2.1.1	Images	3
2.1.2	Parameters	4
2.1.3	Events	4
2.2	Compared Parameters	5
2.3	Aspect	6
2.4	Star Slots	9
2.4.1	Slot 3	9
2.4.2	Slot 4	10
2.4.3	Slot 5	11
2.4.4	Slot 6	12
2.4.5	Slot 7	13
2.5	FID Slots	14
2.5.1	Slot 0	14
2.5.2	Slot 1	15
2.5.3	Slot 2	16
3	Gratings	17
3.1	LETG Arm	17
A	Summary	19
A.1	Status	19
A.2	Comments	19

1 Front

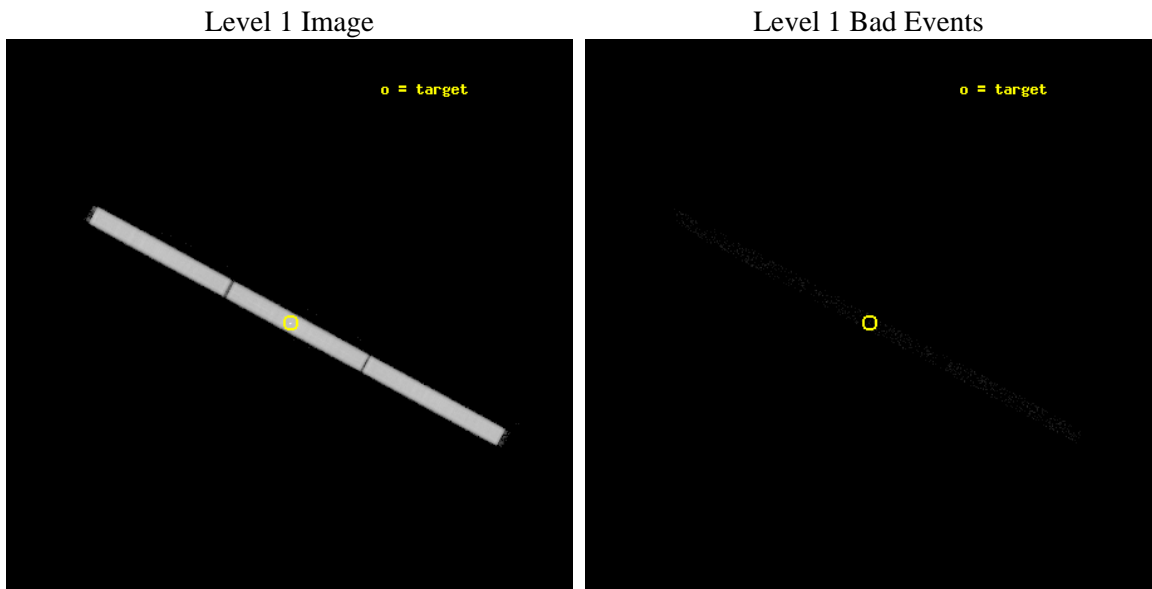
seq_num	500573	Sequence number
obs_id	7245	Observation id
title	Spectra of Neutron Stars with Strongly Magnetized Hydrogen Atmospheres	Proposal title
observer	Prof. Marten van Kerkwijk	Principal investigator
object	RX J0720.4-3125	Source name
ra_targ	110.104167	Observer's specified target RA [deg]
dec_targ	-31.430611	Observer's specified target Dec [deg]
ra_nom	110.10914403223	Nominal RA [deg]
dec_nom	-31.428520621105	Nominal Dec [deg]
roll_nom	28.269913928613	Nominal Roll [deg]
revision	3	Processing version of data
ontime	17187.200795263	[s]
livetime	17049.129526338	Ontime multiplied by DTCOR
l2events	1147742	Number of level 2 events



2 OBI

2.1 OBI

2.1.1 Images



2.1.2 Parameters

obi_num	0	Obi number	sched_exp_time	17000.000000	[s] Scheduled observation exposure time
ascdsver	8.4.5	Processing system revision	ontime	17187.200795263	[s]
caldsver	4.5.1.1	 	l1events	1582336	Number of level 1 events
date	2012-08-10T19:31:21	Date and time of file creation			
revision	3	Processing version of data			

2.1.3 Events

Level 1 Events

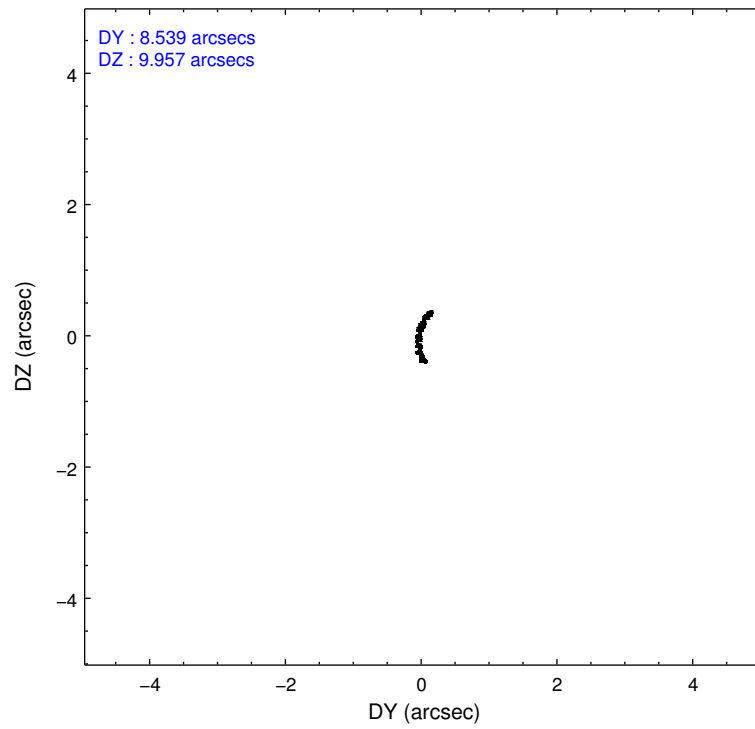
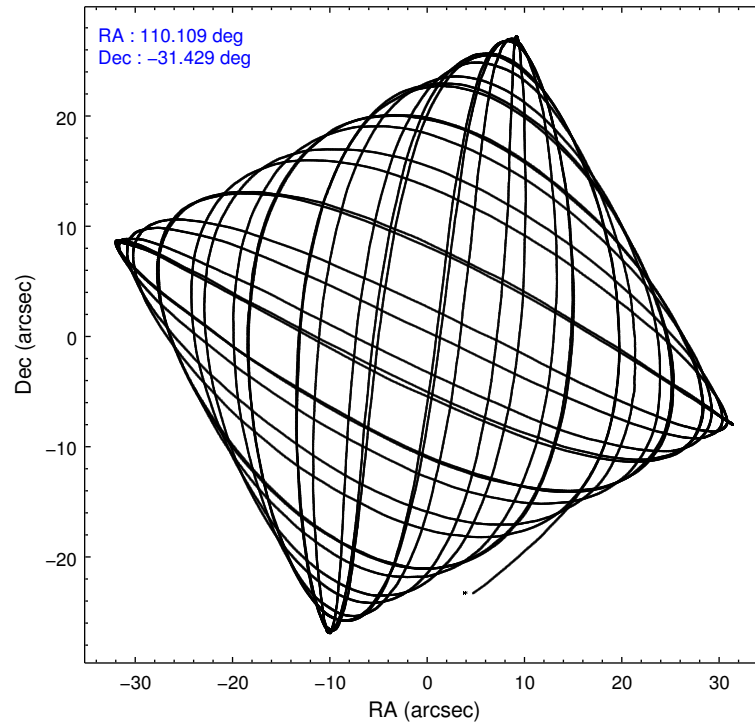
	segment 1	segment 2	segment 3
level 1 events	533810	518502	530024
rejected events	18177	17732	18364
rejected %	3%	3%	3%

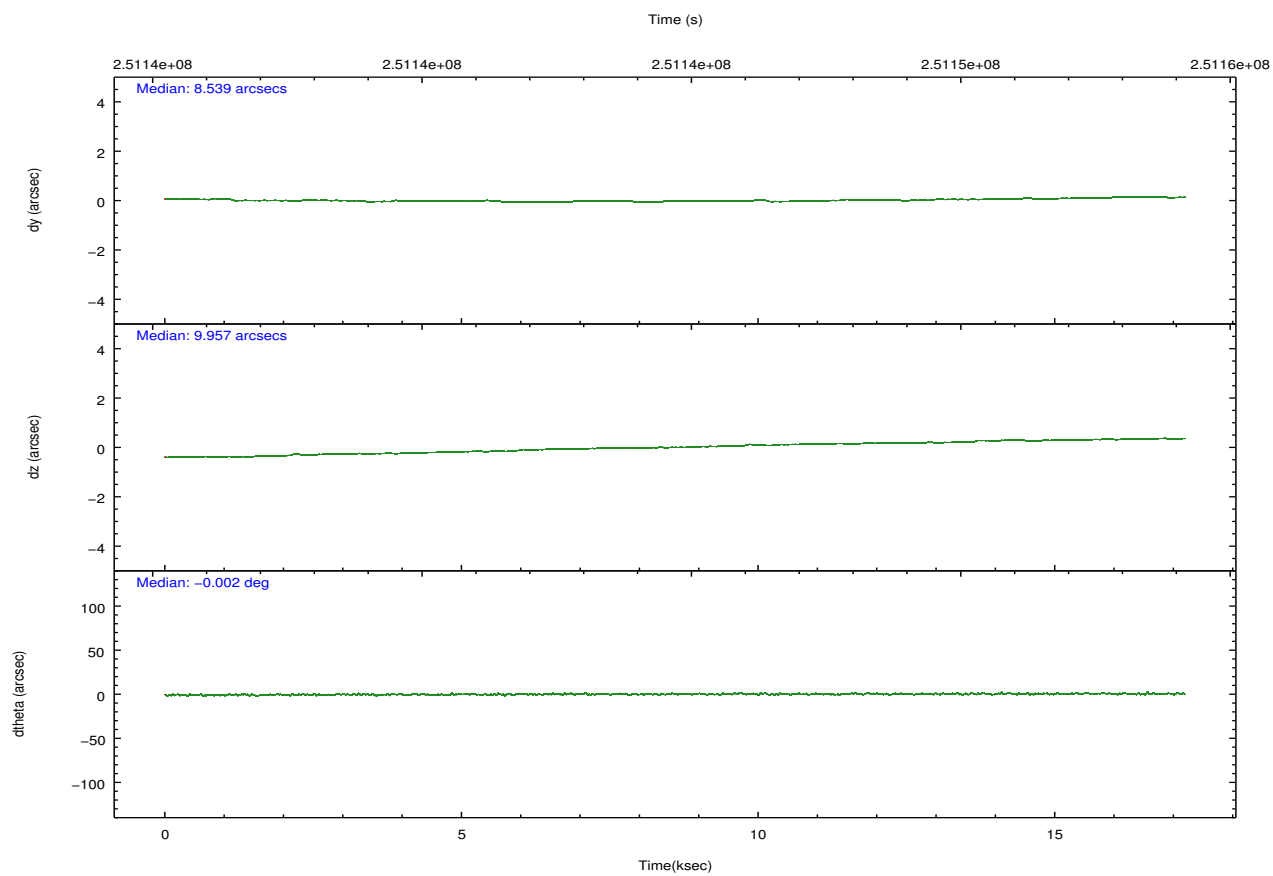
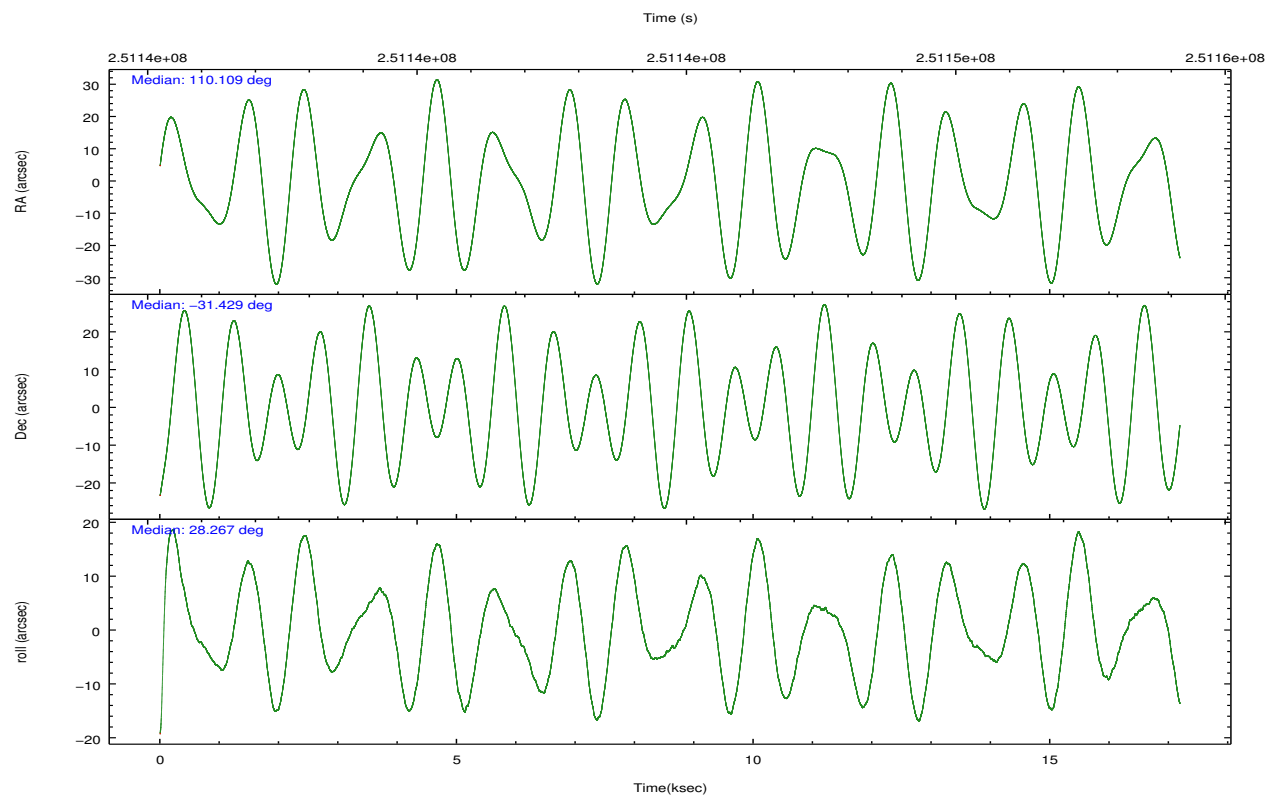
2.2 Compared Parameters

Parameter	Planned	Actual
Instrument	HRC	HRC
Detector	HRC-S	HRC-S
Grating	LETG	LETG
Data mode	OBSERVING	OBSERVING
Observation mode	POINTING	POINTING
[deg] Pointing RA	110.092878	110.1091440322257
[deg] Pointing Dec	-31.453548	-31.4285206211045
[deg] Pointing Roll	28.194106	28.26991392861323
[mm] SIM focus pos	-1.429586	-1.428180813131781
[mm] SIM defocus	0.1037507710433287	0.1051558262725154
[mm] SIM translation stage pos	250.455976	250.466033080201
[mm] SIM translation stage offset	0	-0.01005468664627074
[s] Observation start time (MET)	251136291.184000	251135499.2671
Observation start date	2005-12-16T16:03:47	2005-12-16T15:51:39
[s] Observation end time (MET)	251153291.184000	251154150.68046
Observation end date	2005-12-16T20:47:07	2005-12-16T21:02:30

Parameter	Planned	Actual
Obspar format version number	7	7
Obspar file type	PREDICTED	ACTUAL
Obspar update status	NONE	UPDATED

2.3 Aspect



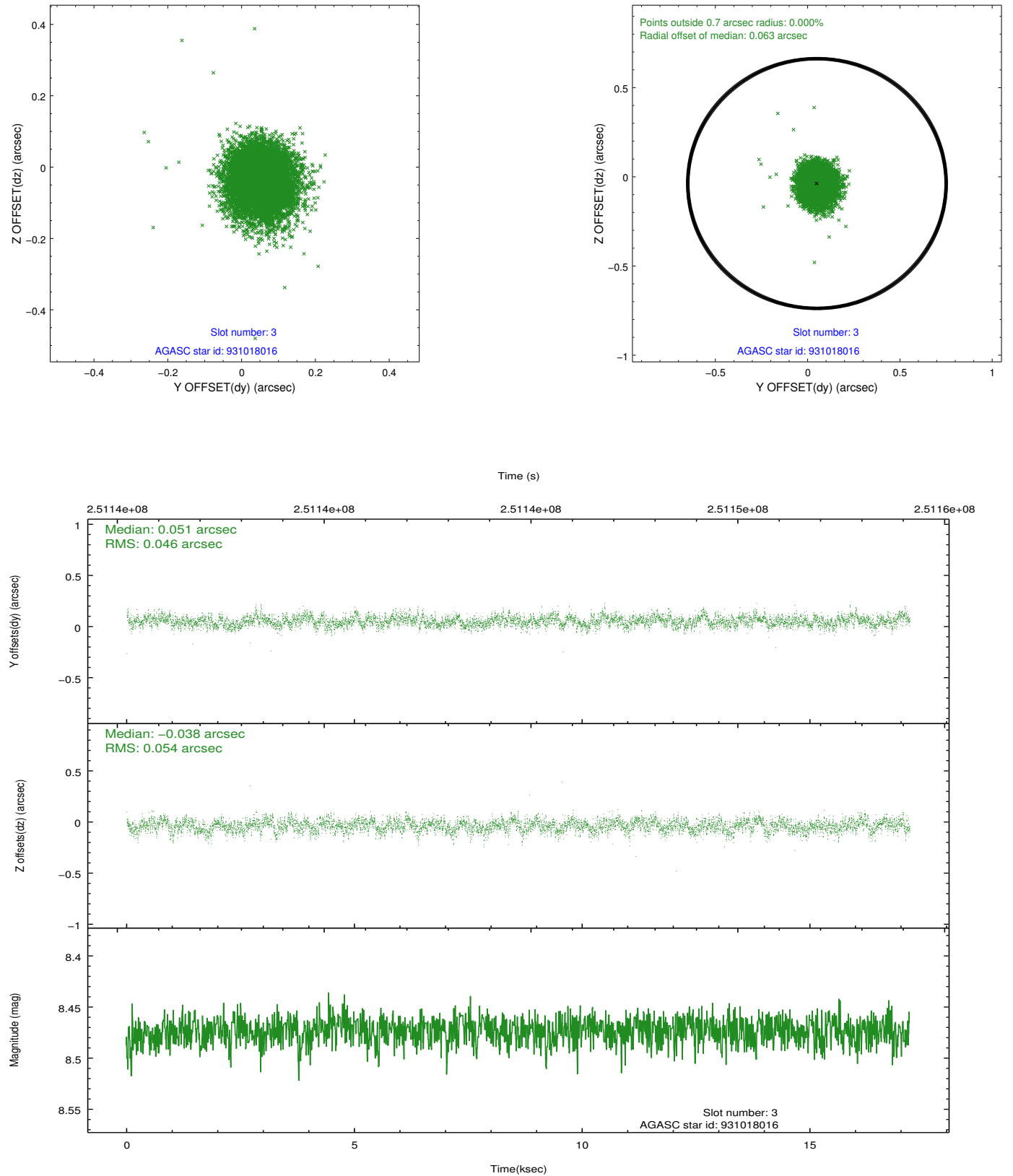


Slot Statistics

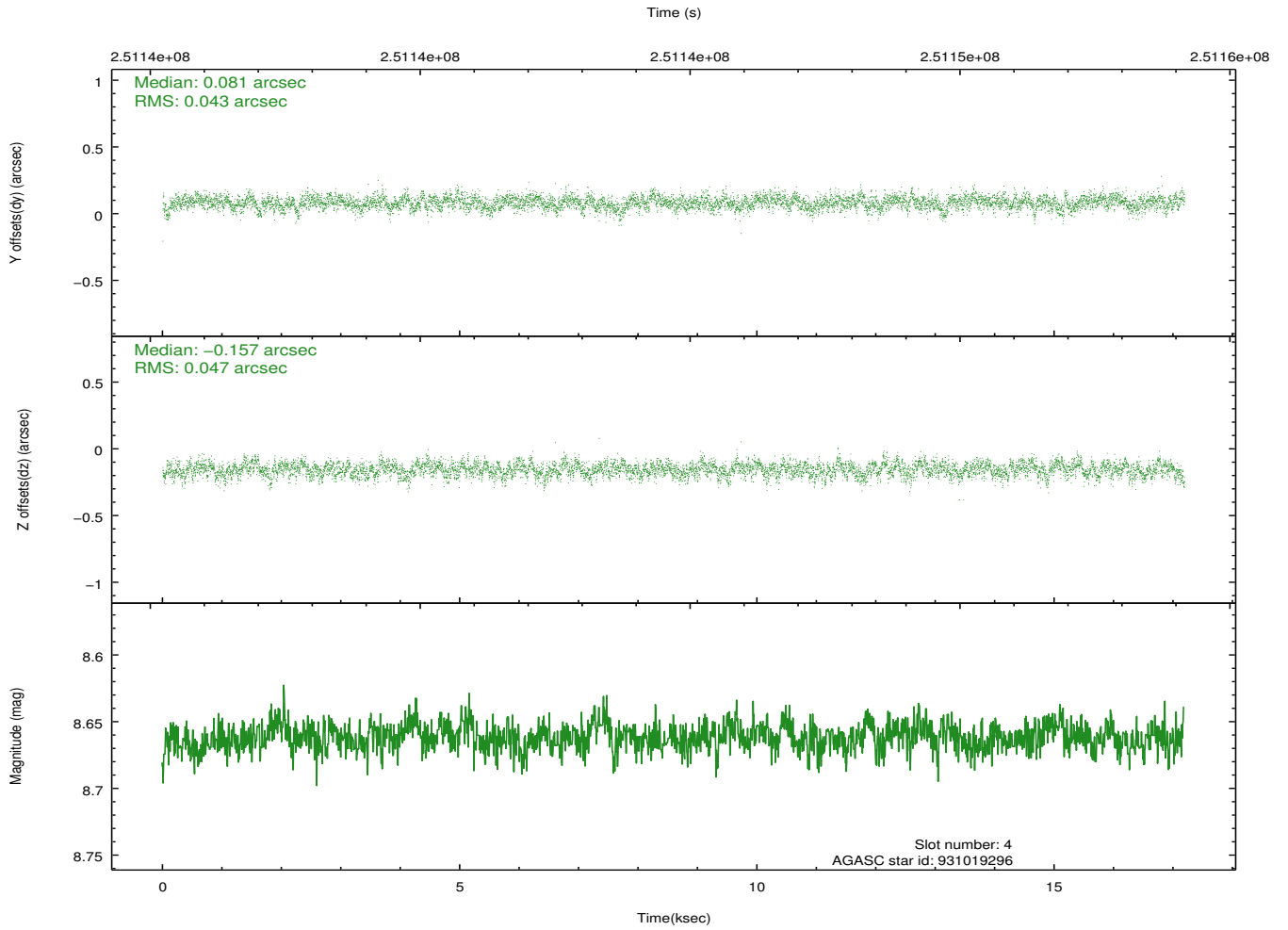
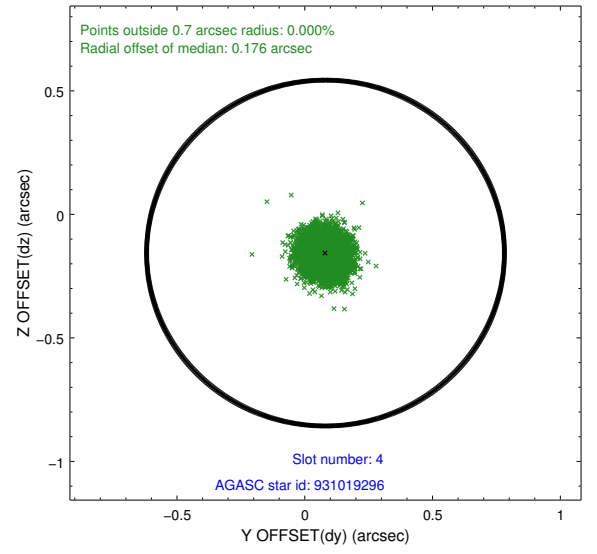
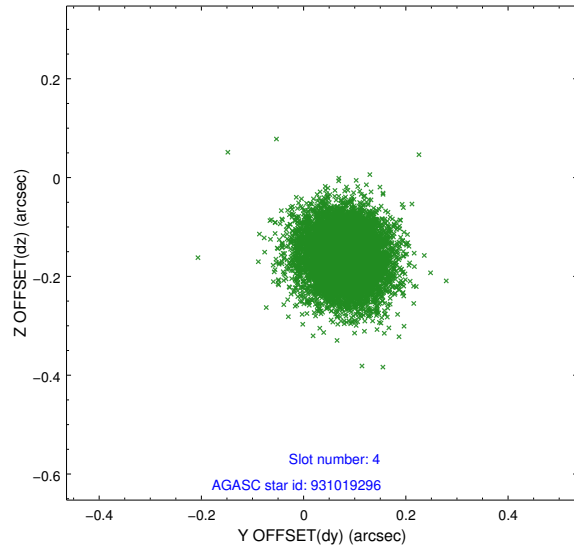
slot	status	id	mag	n_pts	med_dy	med_dz	dr1	dr2	ra	dec	mean_y	mean_z
0	FID	HRC-S-1	7.04	4193	0.159	-0.210	0.006	0.011	0.000000	0.000000	-1162.73	-458.67
1	FID	HRC-S-2	7.03	4192	0.138	-0.116	0.005	0.009	0.000000	0.000000	1236.66	-451.37
2	FID	HRC-S-3	7.05	4193	0.093	0.024	0.007	0.012	0.000000	0.000000	-1165.20	570.99
3	GUIDE	931018016	8.47	8365	0.051	-0.038	0.075	0.121	109.684535	-31.226562	-722.89	1312.26
4	GUIDE	931019296	8.66	8382	0.081	-0.157	0.068	0.110	109.471771	-31.694370	-2089.16	130.01
5	GUIDE	931022960	8.95	8382	0.093	0.177	0.076	0.122	109.733092	-31.864448	-1669.27	-785.18
6	GUIDE	931146200	8.97	8380	-0.140	0.085	0.073	0.120	110.586199	-31.643611	1007.52	-1320.00
7	GUIDE	931160352	8.62	8384	-0.083	-0.067	0.074	0.119	110.268138	-30.864891	1478.42	1611.84

2.4 Star Slots

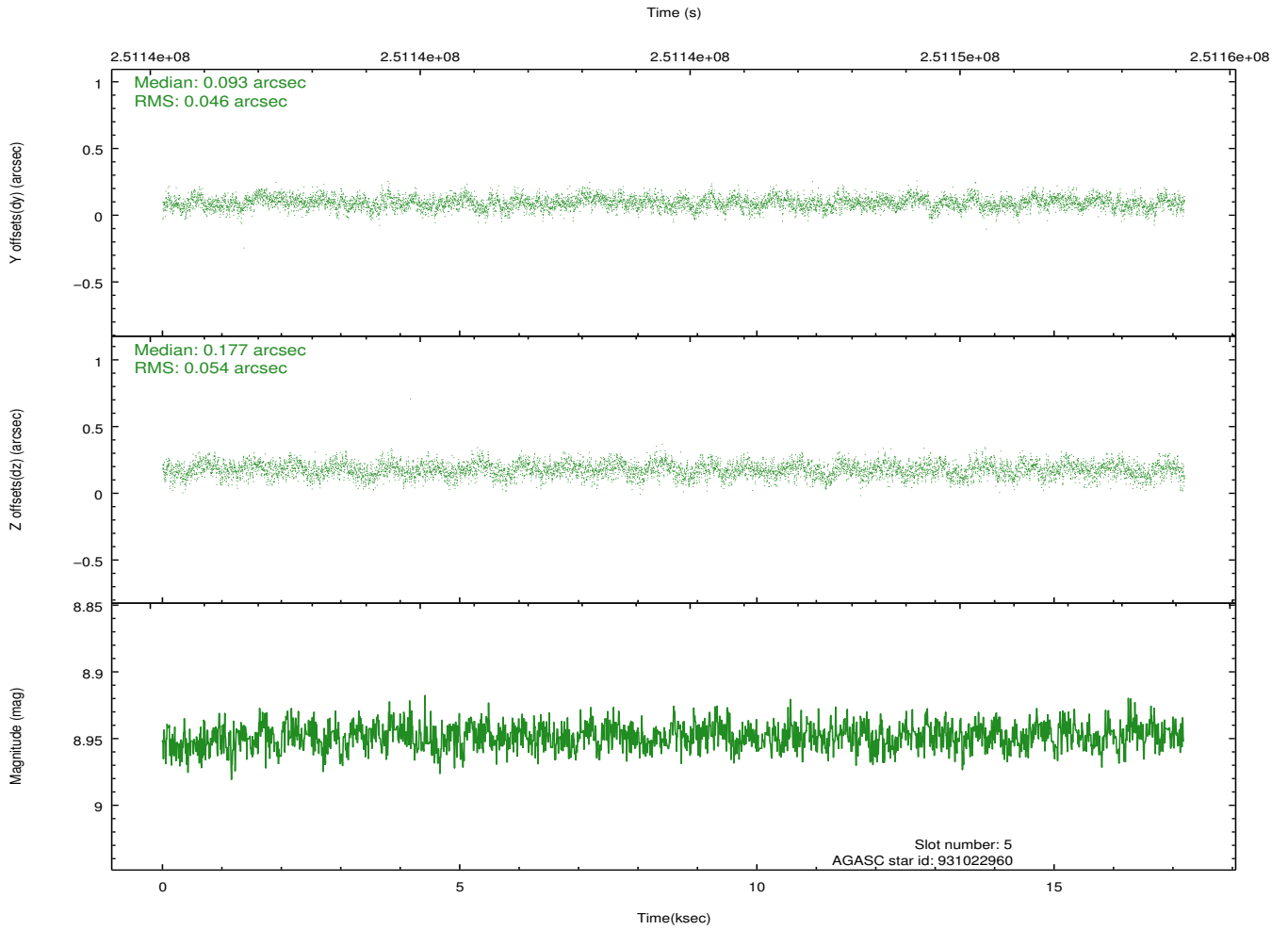
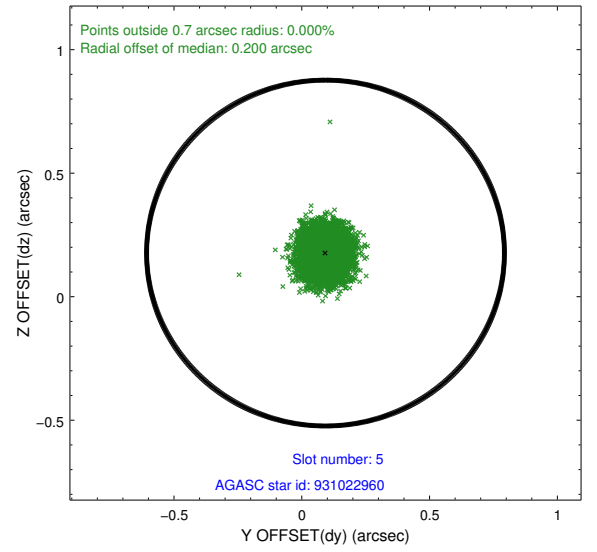
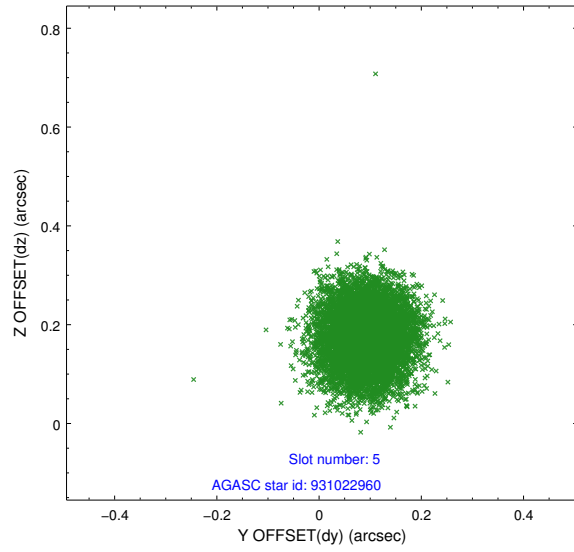
2.4.1 Slot 3



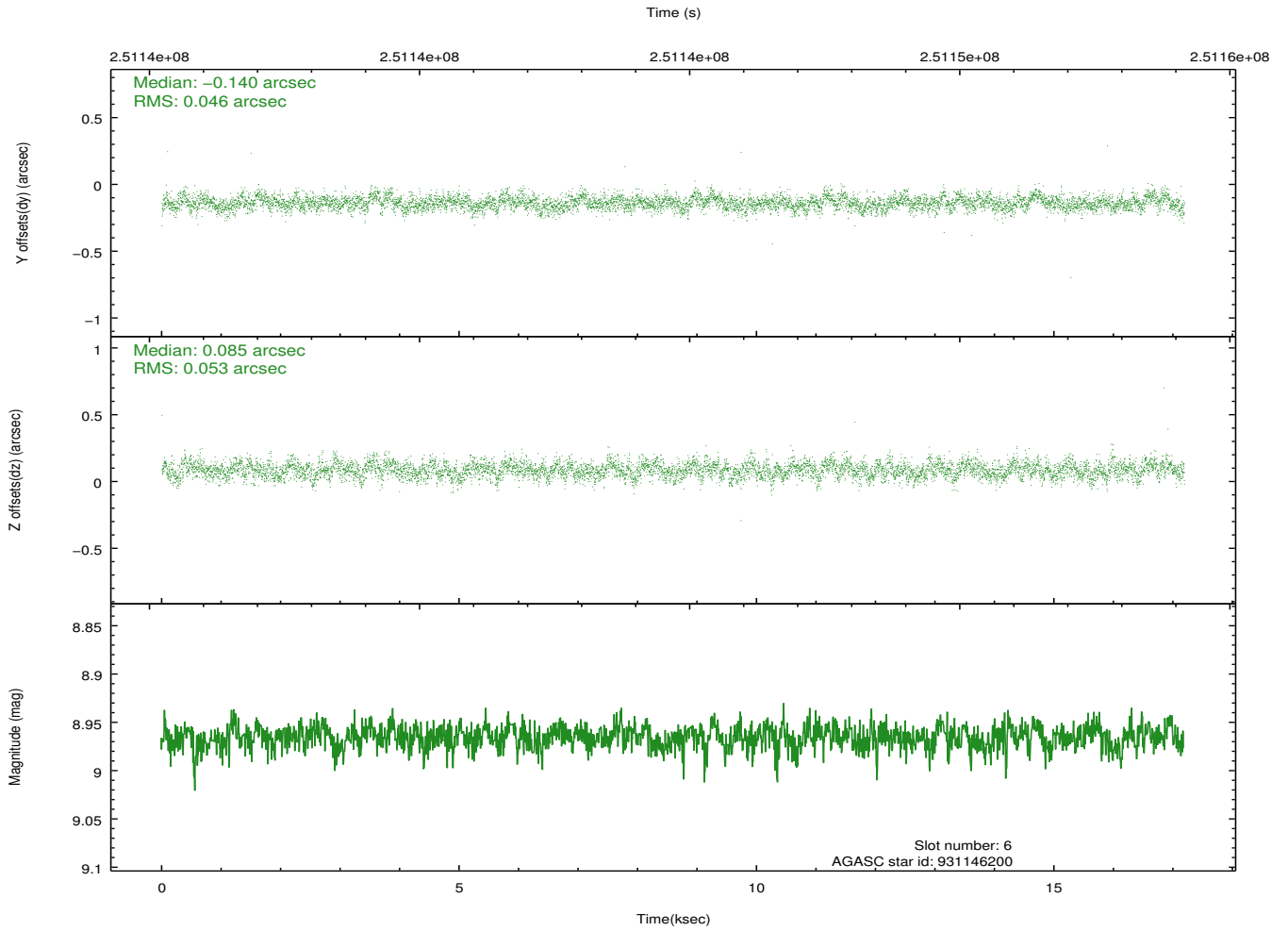
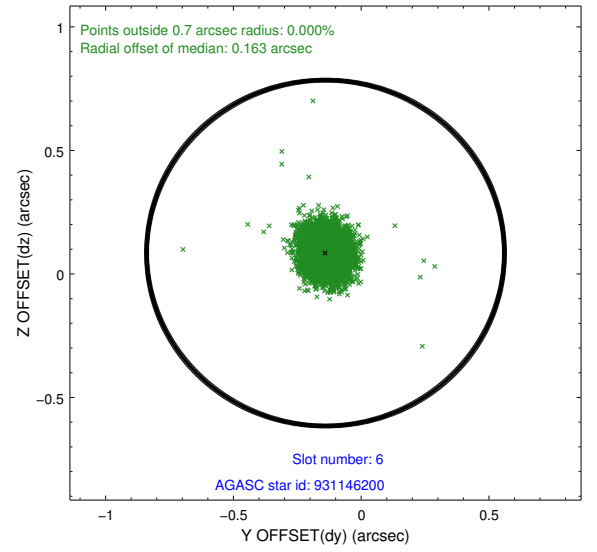
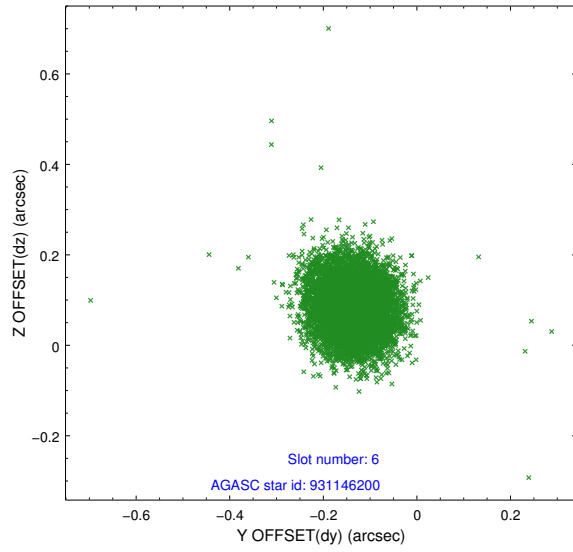
2.4.2 Slot 4



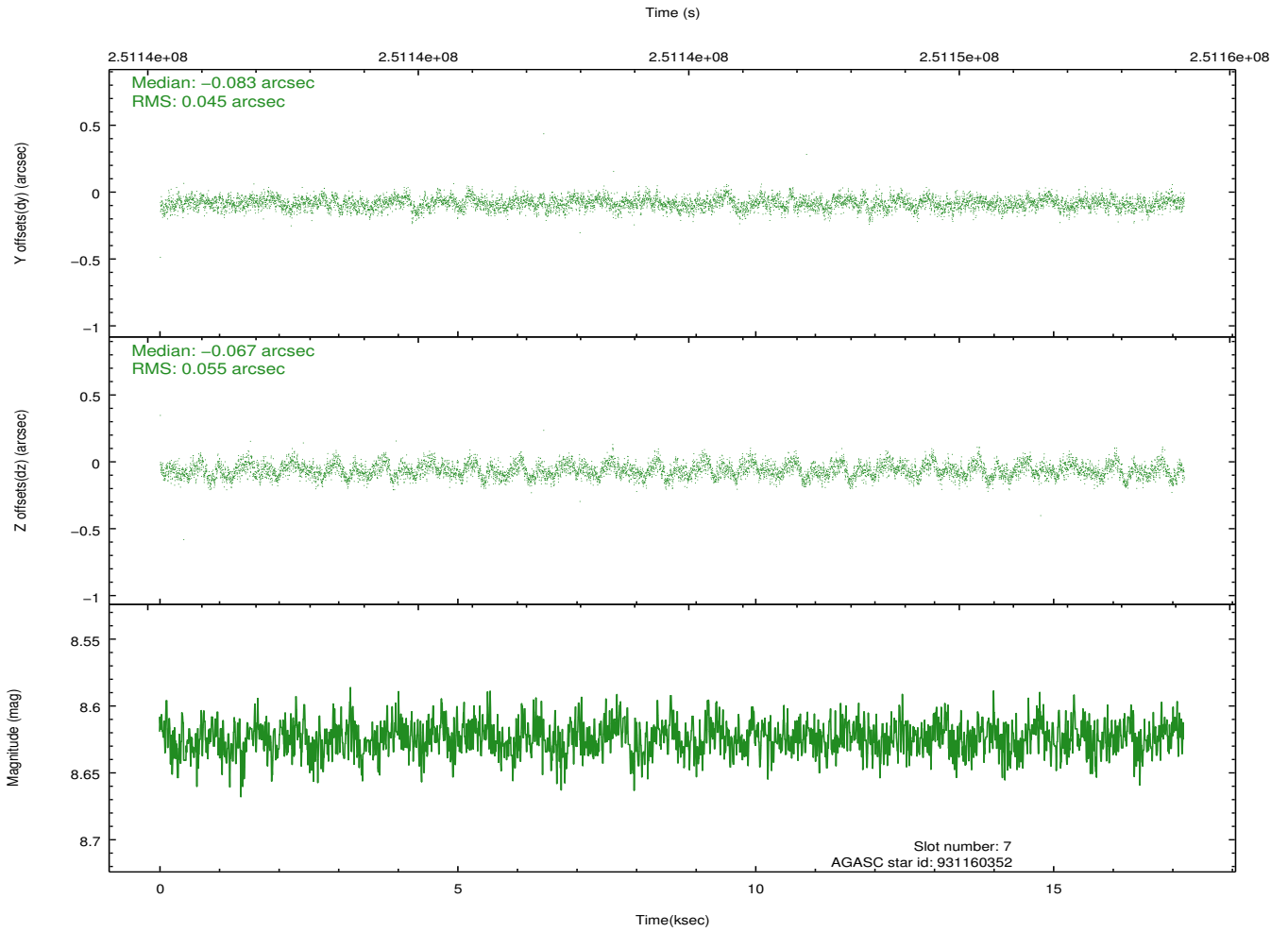
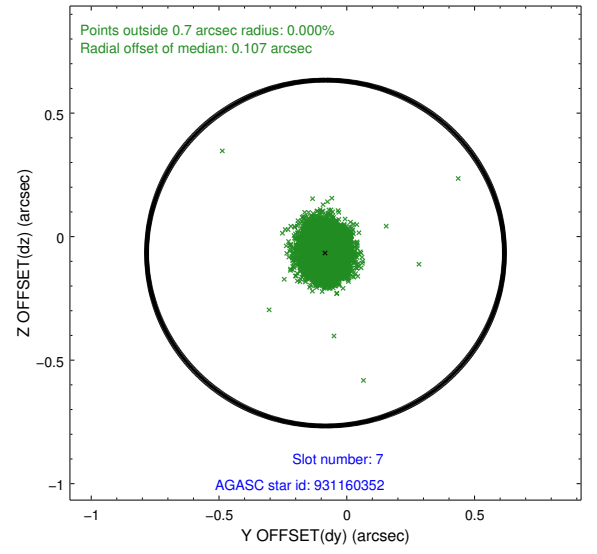
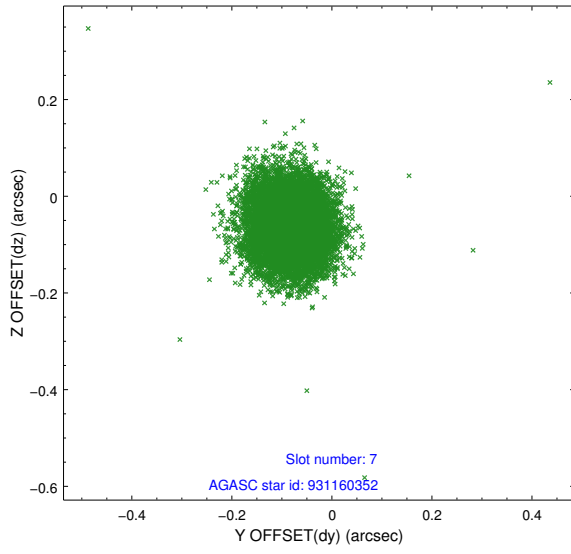
2.4.3 Slot 5



2.4.4 Slot 6

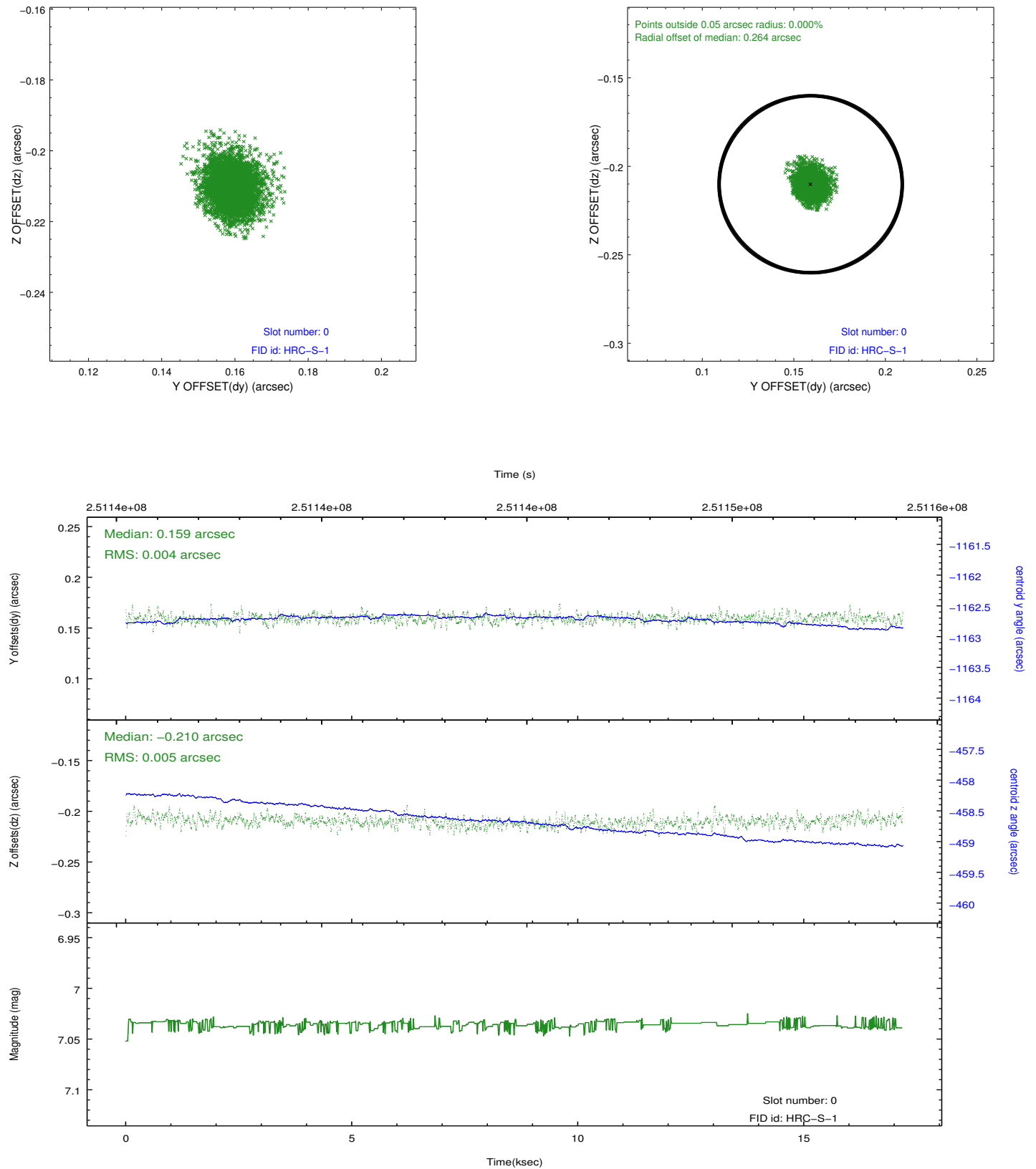


2.4.5 Slot 7

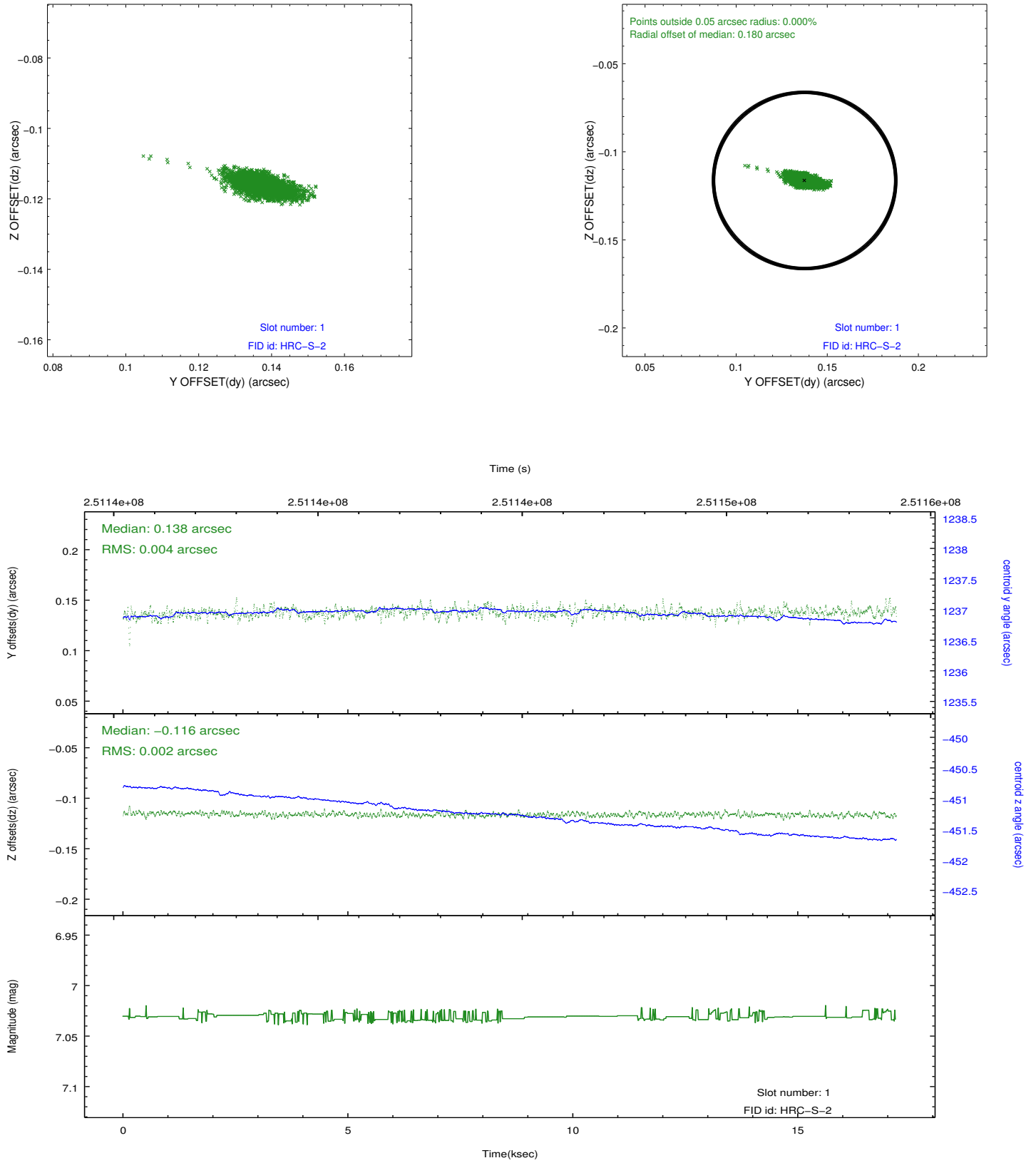


2.5 FID Slots

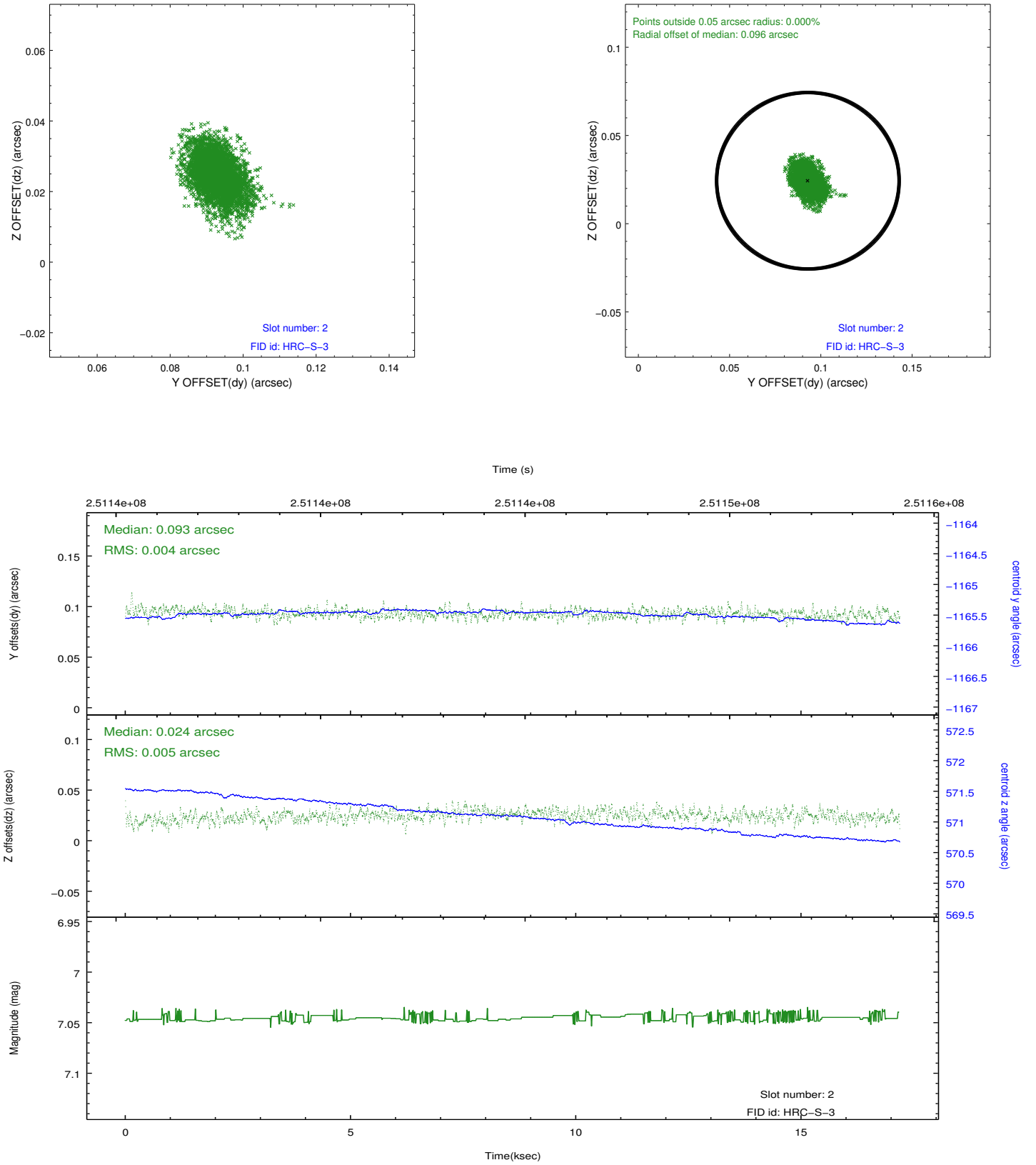
2.5.1 Slot 0



2.5.2 Slot 1

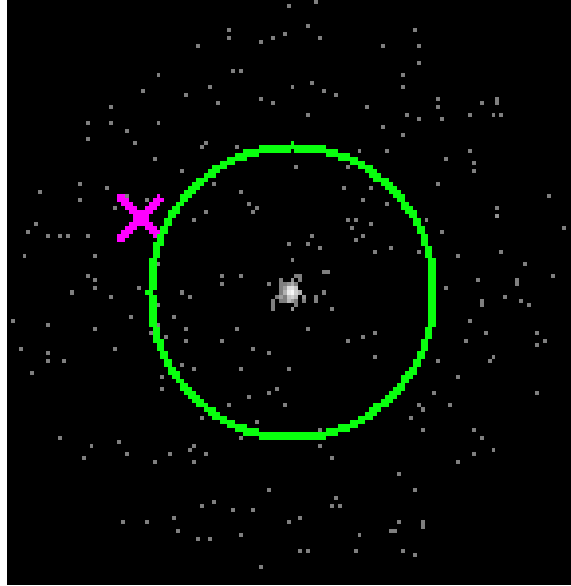


2.5.3 Slot 2

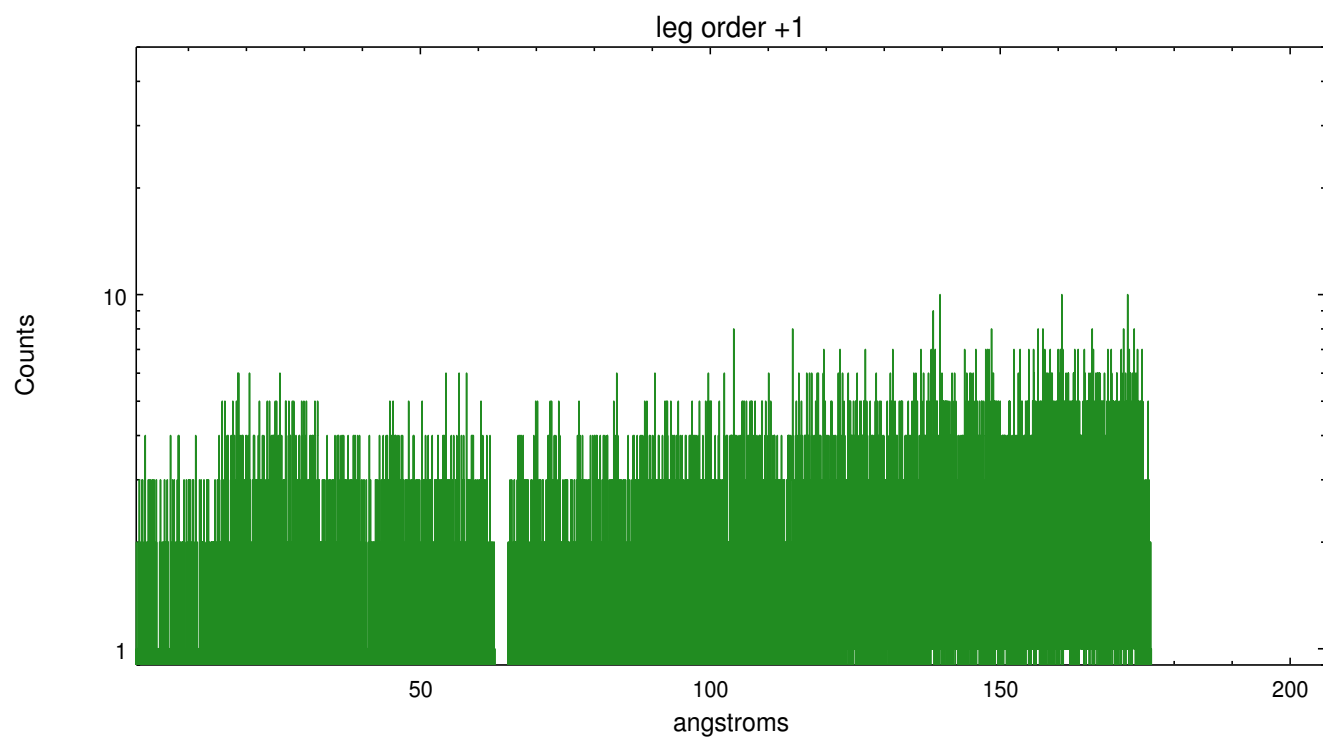
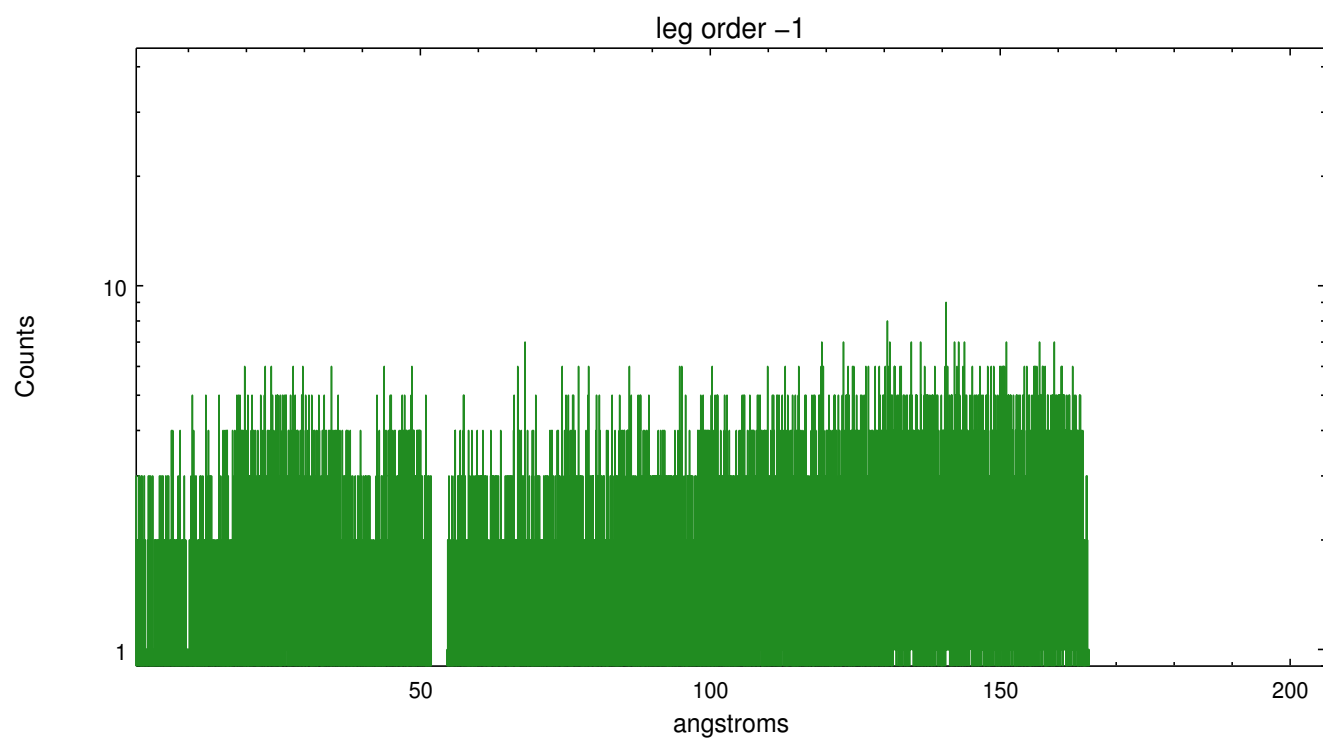


3 Gratings

3.1 LETG Arm



LETG Zero Order



A Summary

A.1 Status

V&V Scientist	Joy Nichols
V&V Date (YYYY-MM-DD)	2012.08.14
V&V Edition	1
V&V Disposition and Status	OK
V&V Charge Time	17.1872

A.2 Comments