

V&V Reference Report

L2 ASCDS Version : 8.5.1.1

Observation 7177 - L2 Version 3
Chandra X-Ray Center

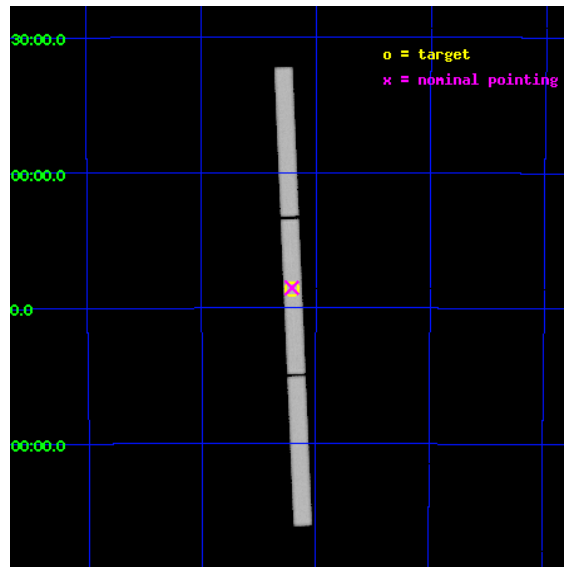
L2 Processing Date : Dec 30 2012

Contents

1	Front	2
2	OBI	3
2.1	OBI	3
2.1.1	Images	3
2.1.2	Parameters	4
2.1.3	Events	4
2.2	Compared Parameters	5
2.3	Aspect	6
2.4	Star Slots	9
2.4.1	Slot 3	9
2.4.2	Slot 4	10
2.4.3	Slot 5	11
2.4.4	Slot 6	12
2.4.5	Slot 7	13
2.5	FID Slots	14
2.5.1	Slot 0	14
2.5.2	Slot 1	15
2.5.3	Slot 2	16
3	Gratings	17
3.1	LETG Arm	17
A	Summary	19
A.1	Status	19
A.2	Comments	19

1 Front

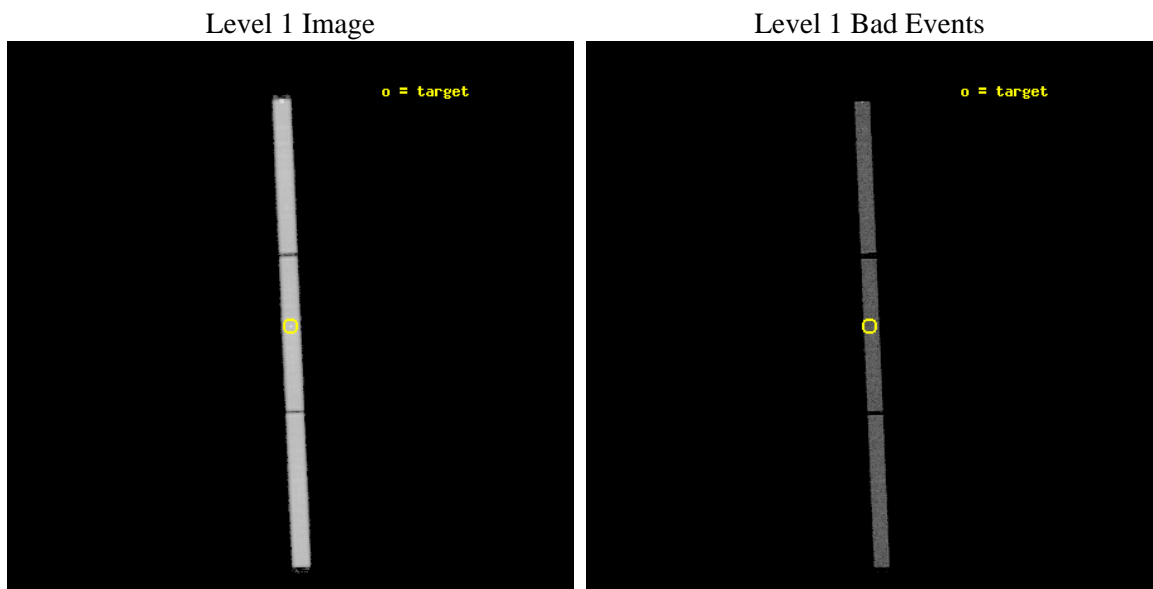
seq_num	500572	Sequence number
obs_id	7177	Observation id
title	Spectra of Neutron Stars with Strongly Magnetized Hydrogen Atmospheres	Proposal title
observer	Prof. Marten van Kerkwijk	Principal investigator
object	RX J0720.4-3125	Source name
ra_targ	110.104167	Observer's specified target RA [deg]
dec_targ	-31.430611	Observer's specified target Dec [deg]
ra_nom	110.10460236635	Nominal RA [deg]
dec_nom	-31.425902416165	Nominal Dec [deg]
roll_nom	87.467502139789	Nominal Roll [deg]
revision	3	Processing version of data
ontime	8043.175370276	[s]
livetime	7983.8126184845	Ontime multiplied by DTCOR
l2events	483432	Number of level 2 events



2 OBI

2.1 OBI

2.1.1 Images



2.1.2 Parameters

obi_num	0	Obi number	sched_exp_time	7900.000000	[s] Scheduled observation exposure time
ascdsver	8.5.1.1	Processing system revision	ontime	8043.175370276	[s]
caldsver	4.5.5	 	l1events	850371	Number of level 1 events
date	2012-12-30T05:49:01	Date and time of file creation			
revision	3	Processing version of data			

2.1.3 Events

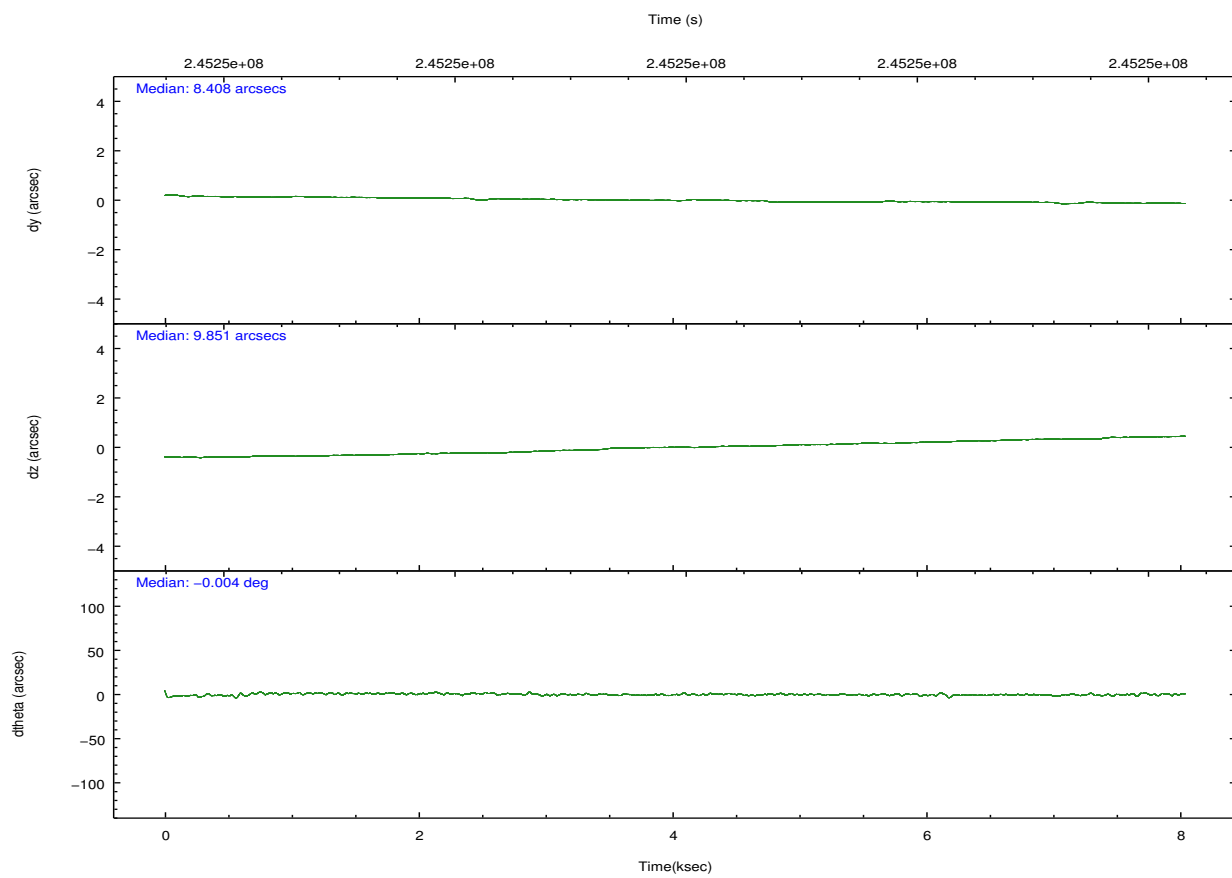
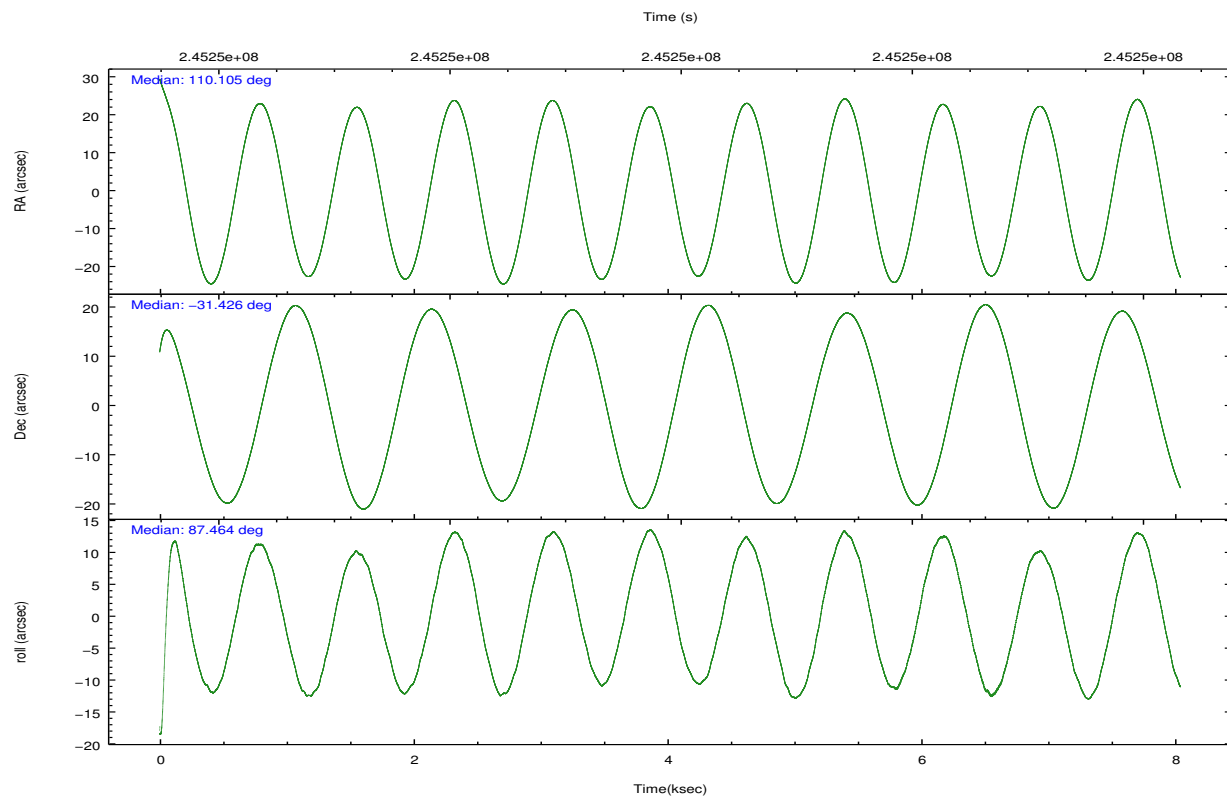
Level 1 Events

	segment 1	segment 2	segment 3
level 1 events	284906	279183	286282
rejected events	67144	64744	66828
rejected %	23%	23%	23%

2.2 Compared Parameters

Parameter	Planned	Actual	Parameter	Planned	Actual
Instrument	HRC	HRC	Obspar format version number	7	7
Detector	HRC-S	HRC-S	Obspar file type	PREDICTED	ACTUAL
Grating	LETG	LETG	Obspar update status	NONE	UPDATED
Data mode	OBSERVING	OBSERVING			
Observation mode	POINTING	POINTING			
[deg] Pointing RA	110.121484	110.1046023663462			
[deg] Pointing Dec	-31.450635	-31.42590241616525			
[deg] Pointing Roll	87.409035	87.46750213978866			
[mm] SIM focus pos	-1.429586	-1.428180813131781			
[mm] SIM defocus	0.1037507710433287	0.1051558262725154			
[mm] SIM translation stage pos	250.455976	250.466033080201			
[mm] SIM translation stage offset	0	-0.01005468664627074			
[s] Observation start time (MET)	245246024.184000	245244173.12019			
Observation start date	2005-10-09T11:52:40	2005-10-09T11:22:53			
[s] Observation end time (MET)	245253924.184000	245254576.87067			
Observation end date	2005-10-09T14:04:20	2005-10-09T14:16:16			

2.3 Aspect

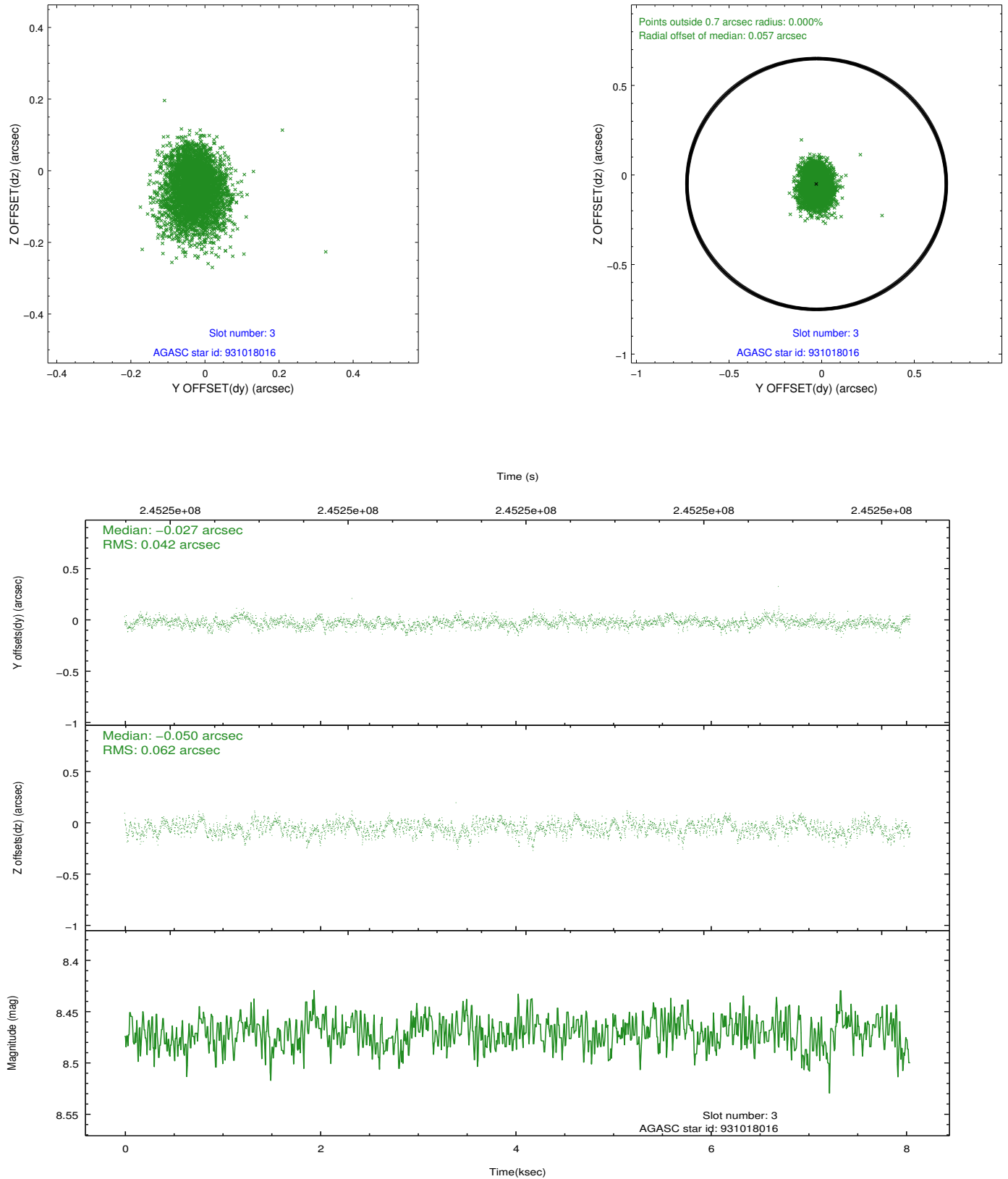


Slot Statistics

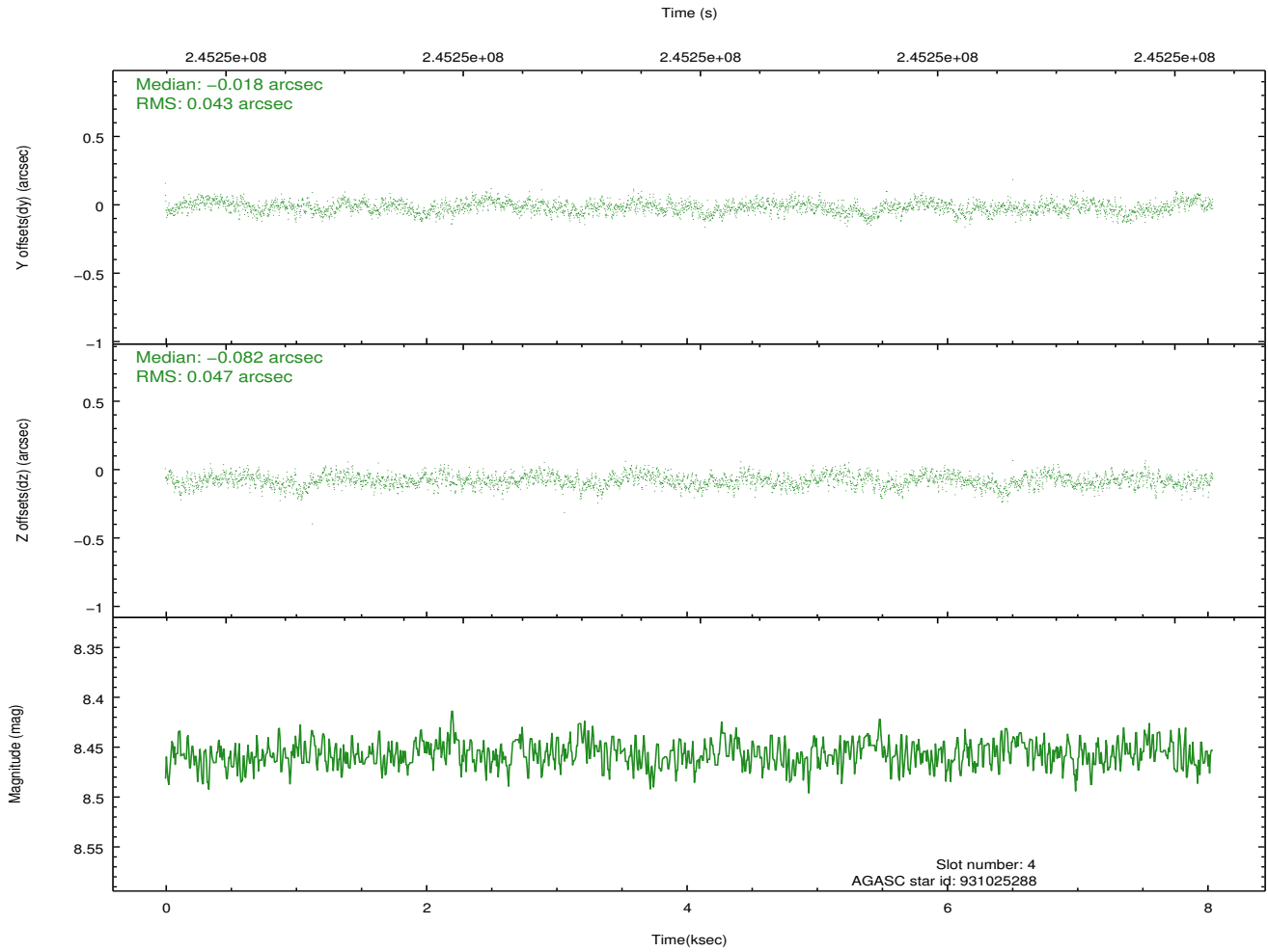
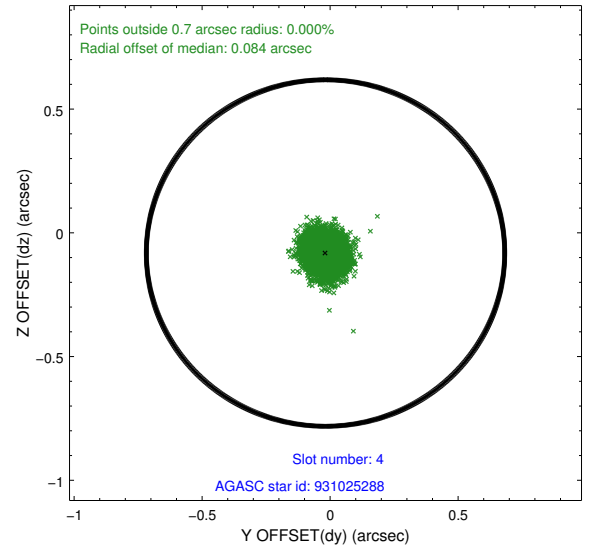
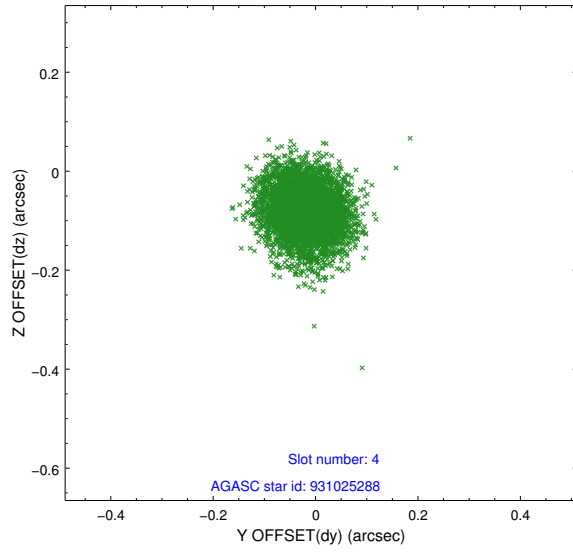
slot	status	id	mag	n_pts	med_dy	med_dz	dr1	dr2	ra	dec	mean_y	mean_z
0	FID	HRC-S-1	7.01	1961	0.104	-0.134	0.005	0.008	0.000000	0.000000	-1162.62	-458.50
1	FID	HRC-S-2	7.01	1962	0.090	-0.096	0.014	0.023	0.000000	0.000000	1236.45	-451.33
2	FID	HRC-S-4	7.00	1961	0.208	-0.074	0.013	0.021	0.000000	0.000000	1236.37	573.43
3	GUIDE	931018016	8.47	3924	-0.027	-0.050	0.079	0.129	109.684535	-31.226562	742.16	1380.28
4	GUIDE	931025288	8.46	3923	-0.018	-0.082	0.068	0.108	109.511084	-30.937793	1753.99	1966.68
5	GUIDE	931695048	7.37	3924	0.016	0.196	0.067	0.105	110.648539	-32.046020	-2071.90	-1703.05
6	GUIDE	931012368	8.77	3925	0.100	-0.255	0.086	0.134	109.359817	-31.783345	-1310.66	2273.35
7	GUIDE	931160352	8.65	3923	-0.070	0.192	0.074	0.121	110.268138	-30.864891	2126.39	-356.28

2.4 Star Slots

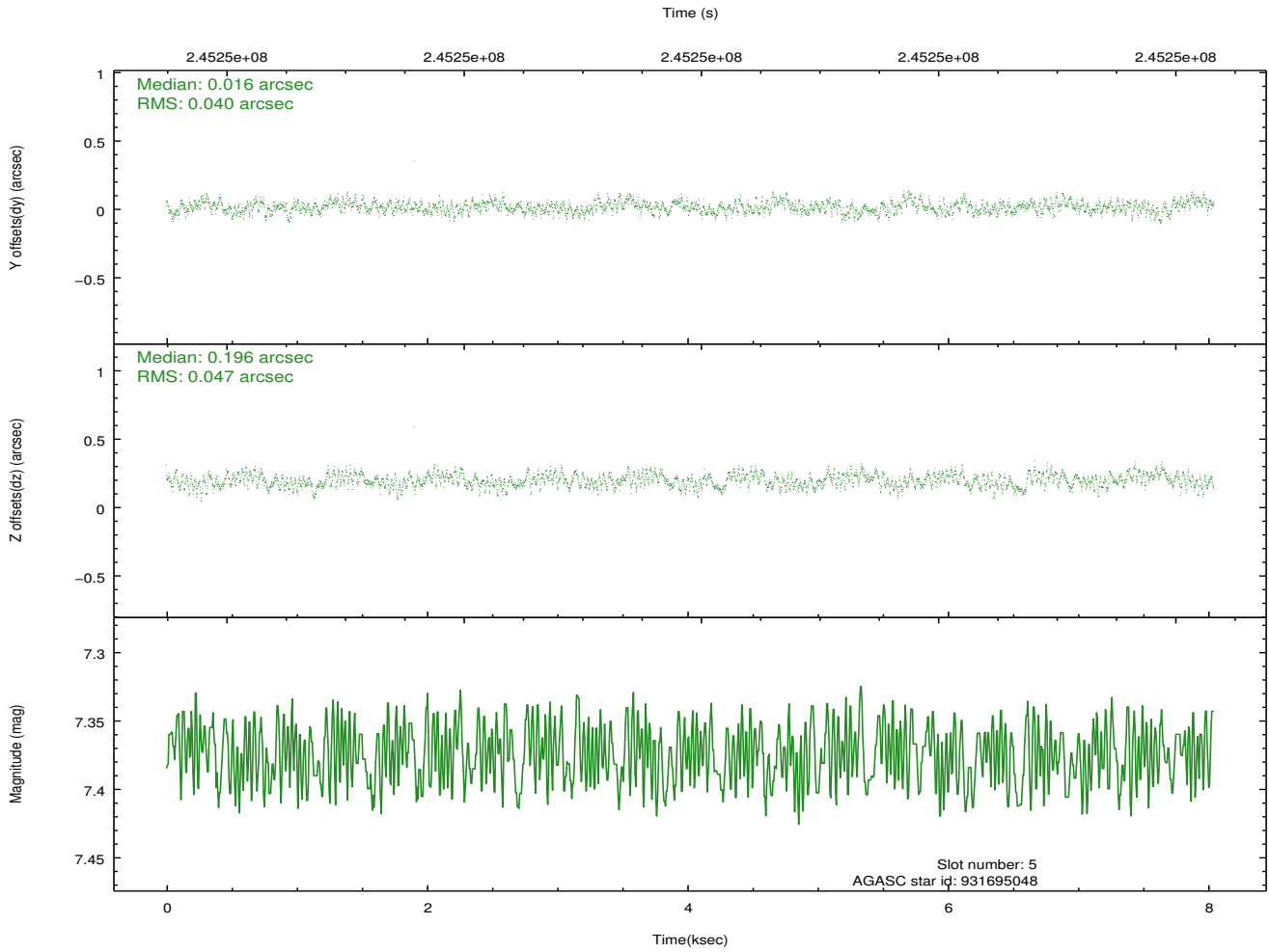
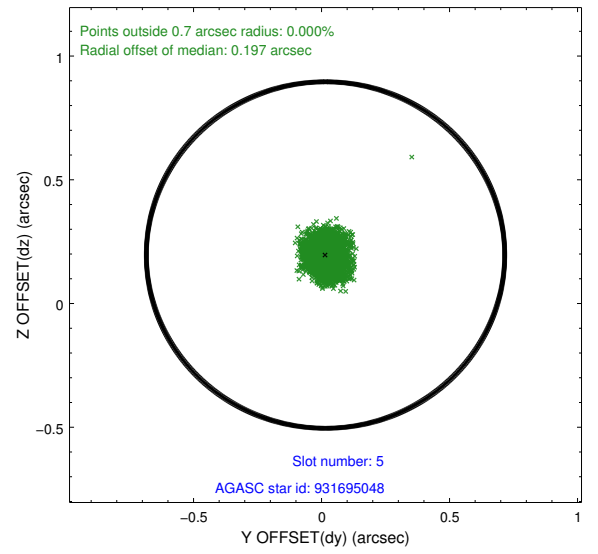
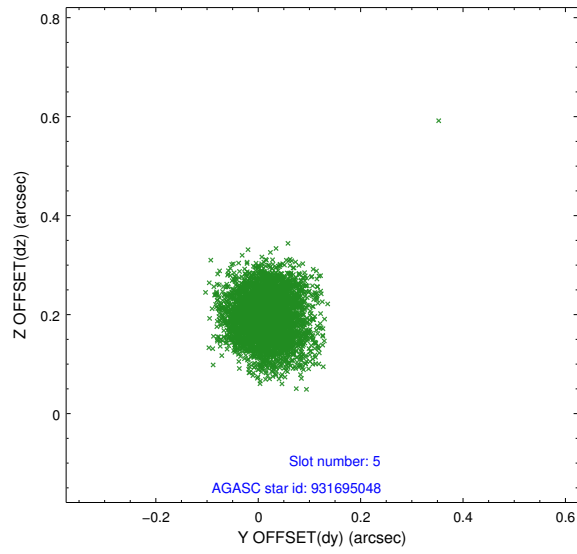
2.4.1 Slot 3



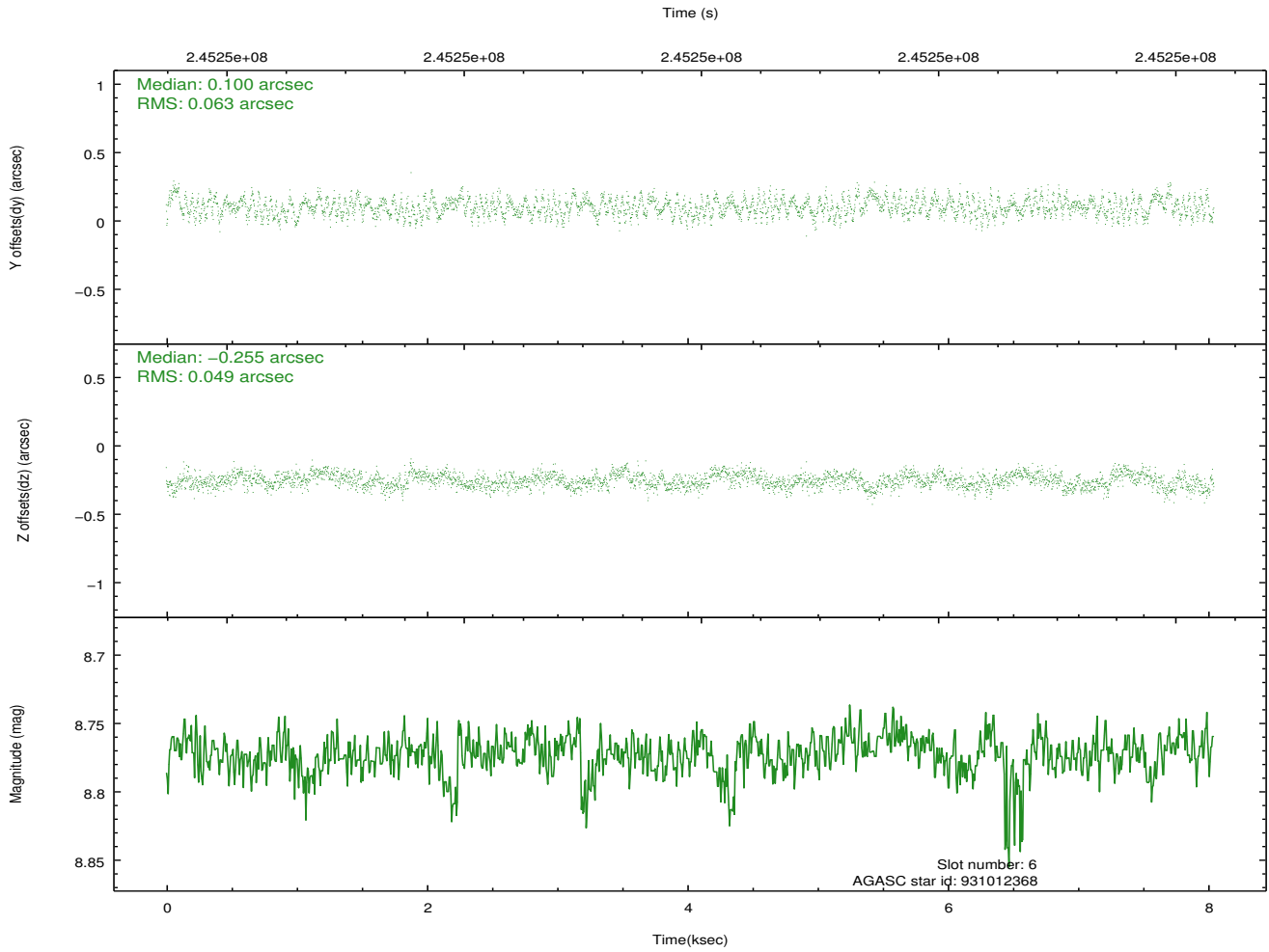
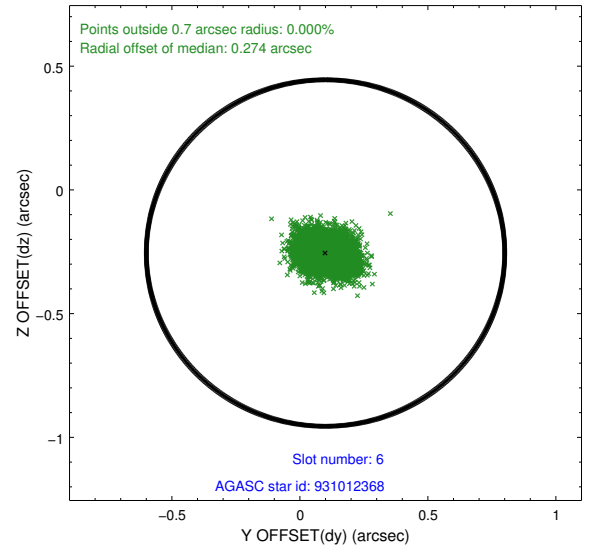
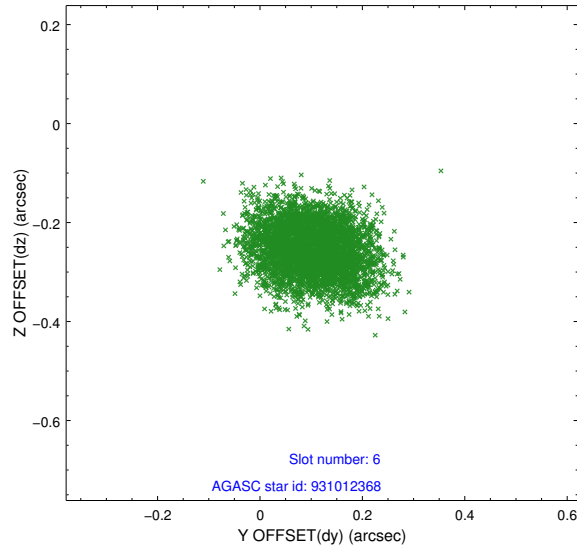
2.4.2 Slot 4



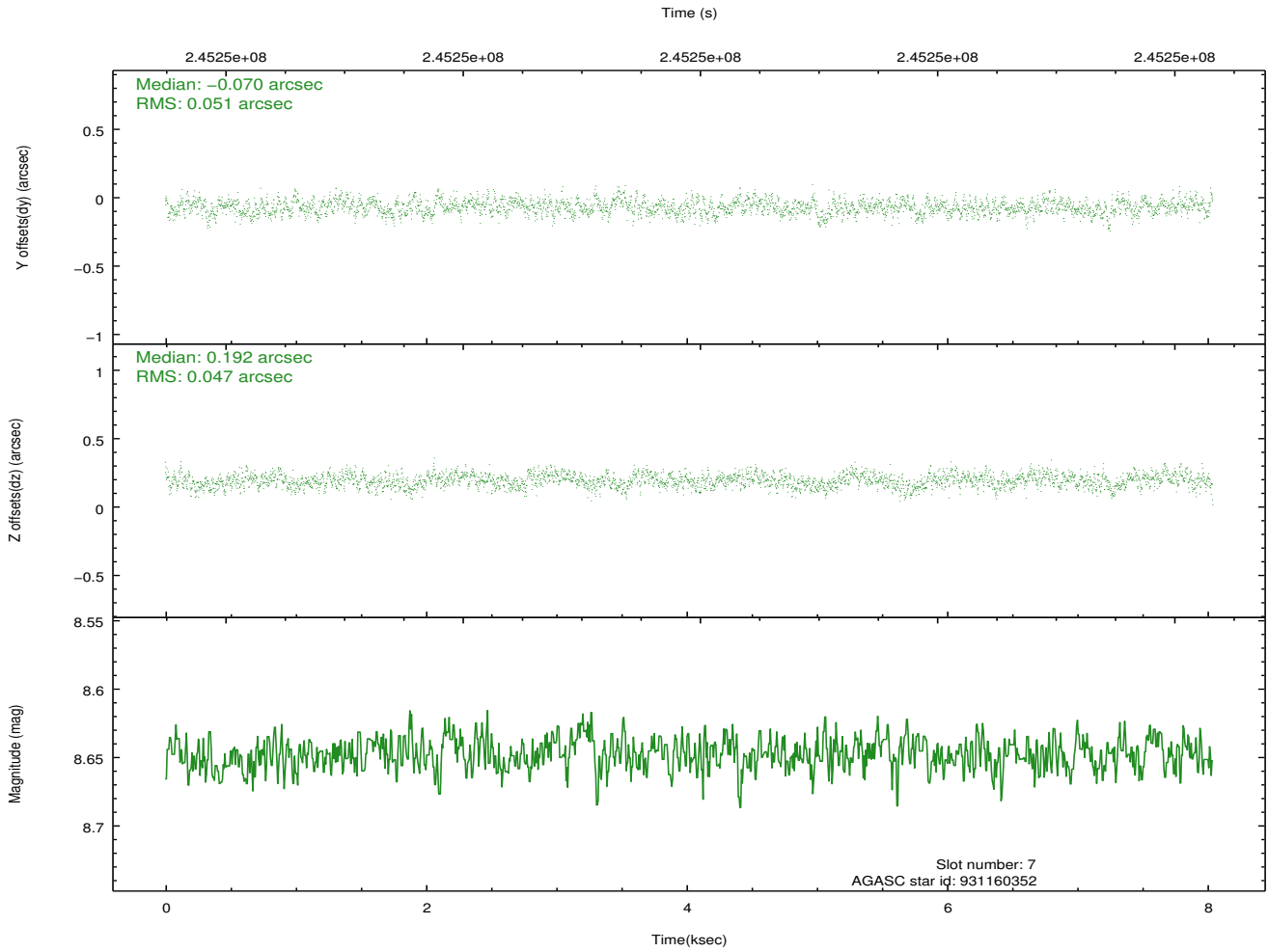
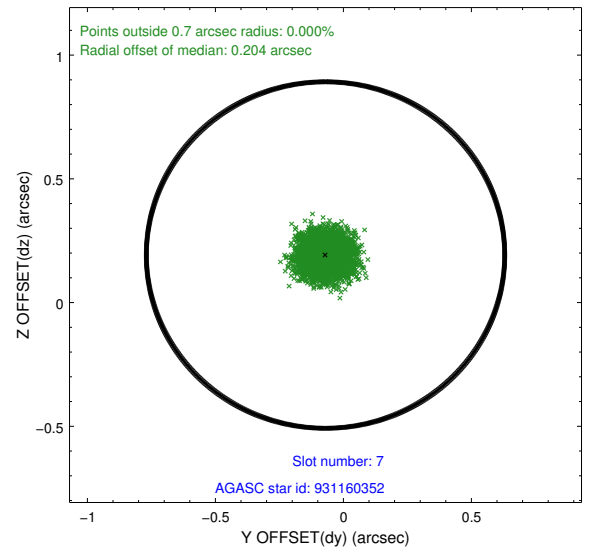
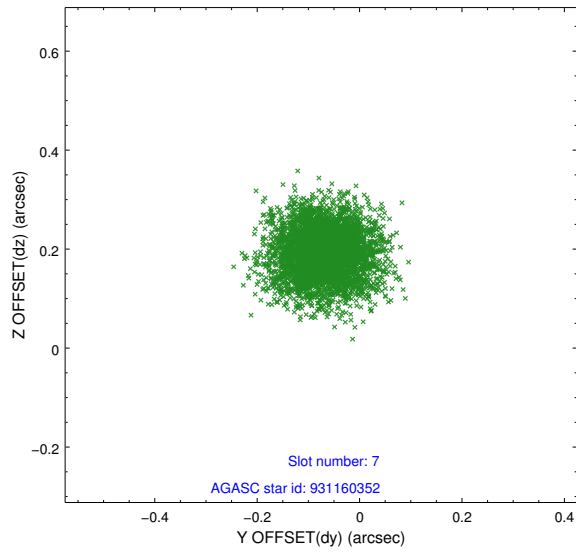
2.4.3 Slot 5



2.4.4 Slot 6

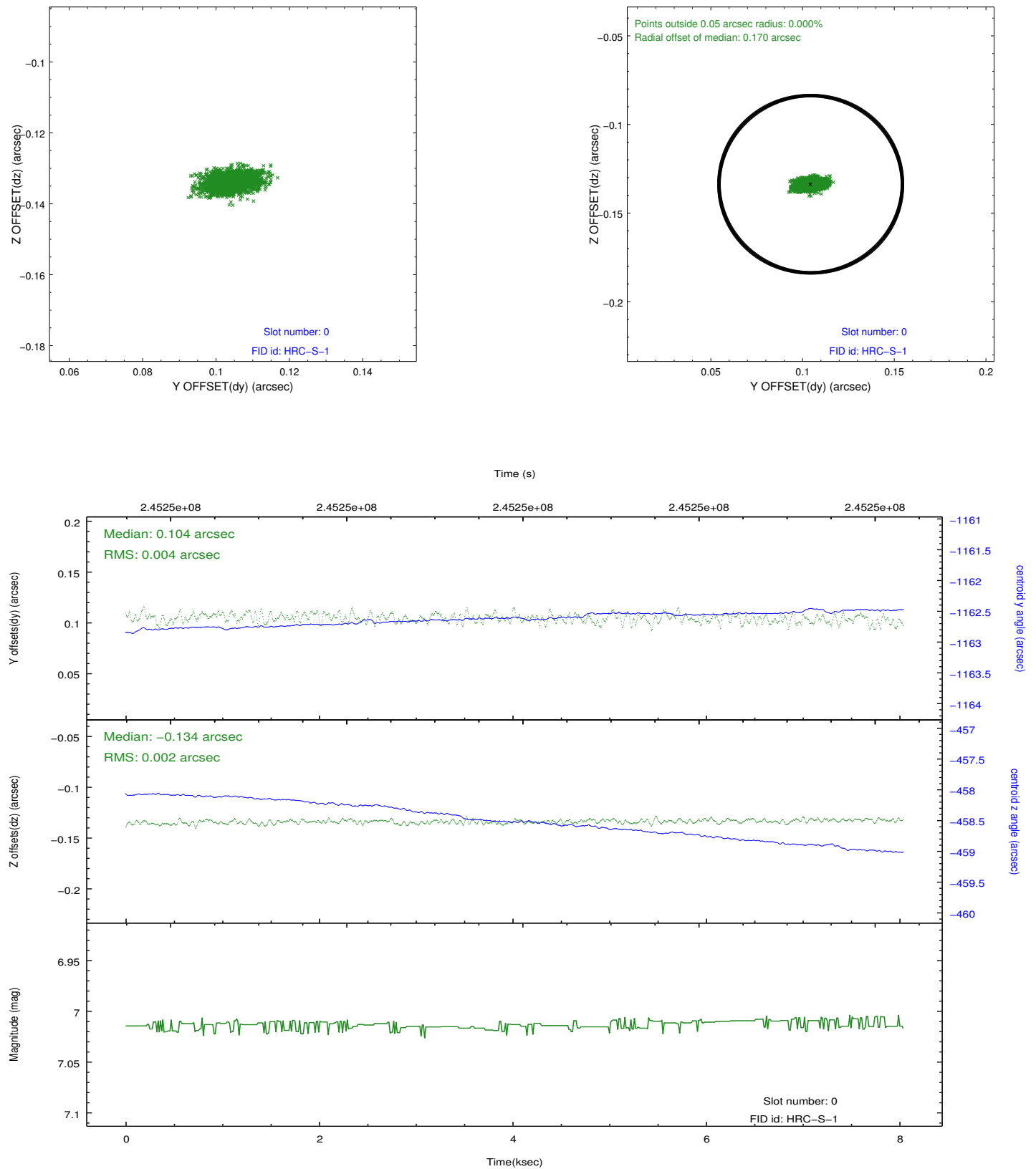


2.4.5 Slot 7

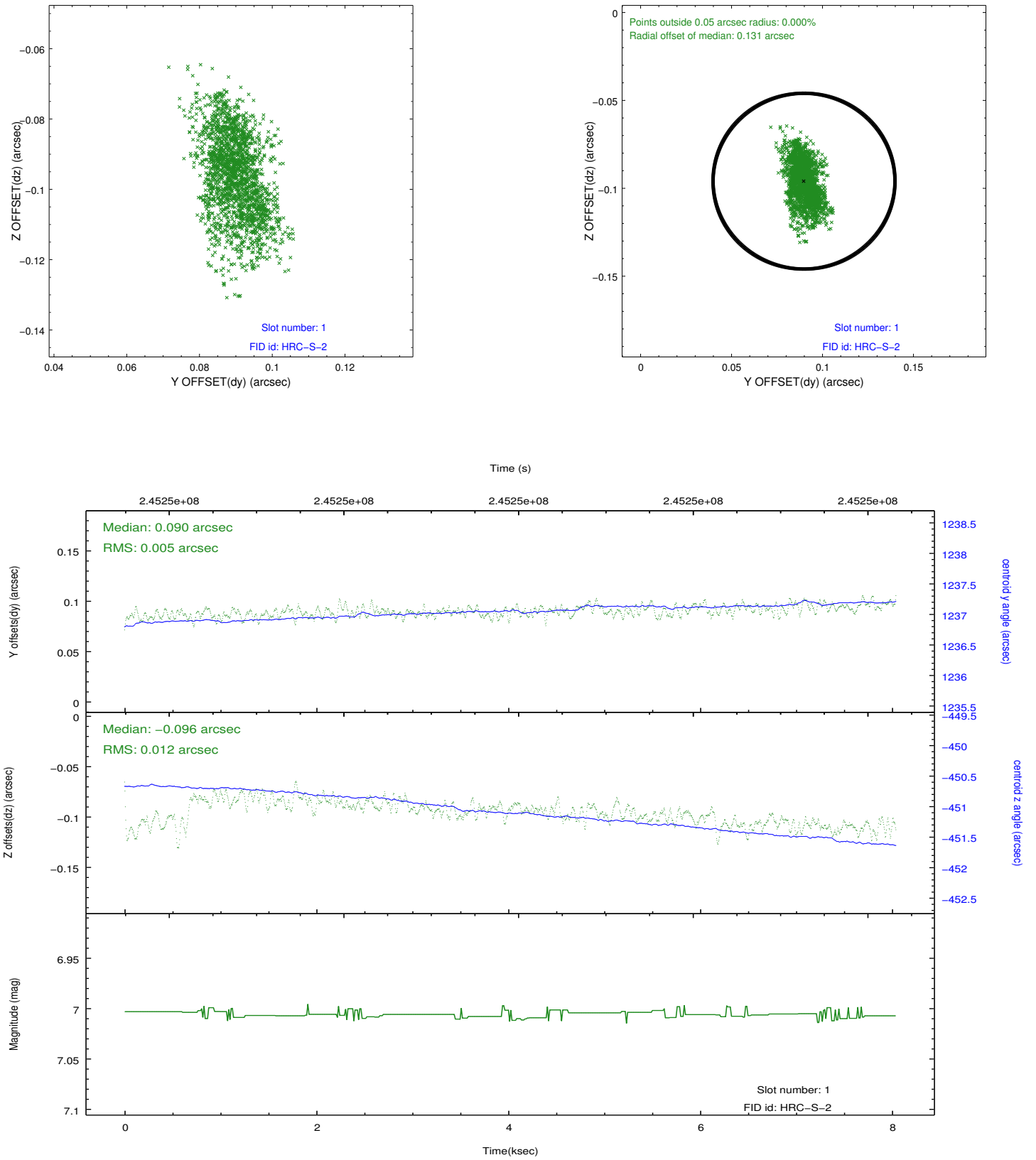


2.5 FID Slots

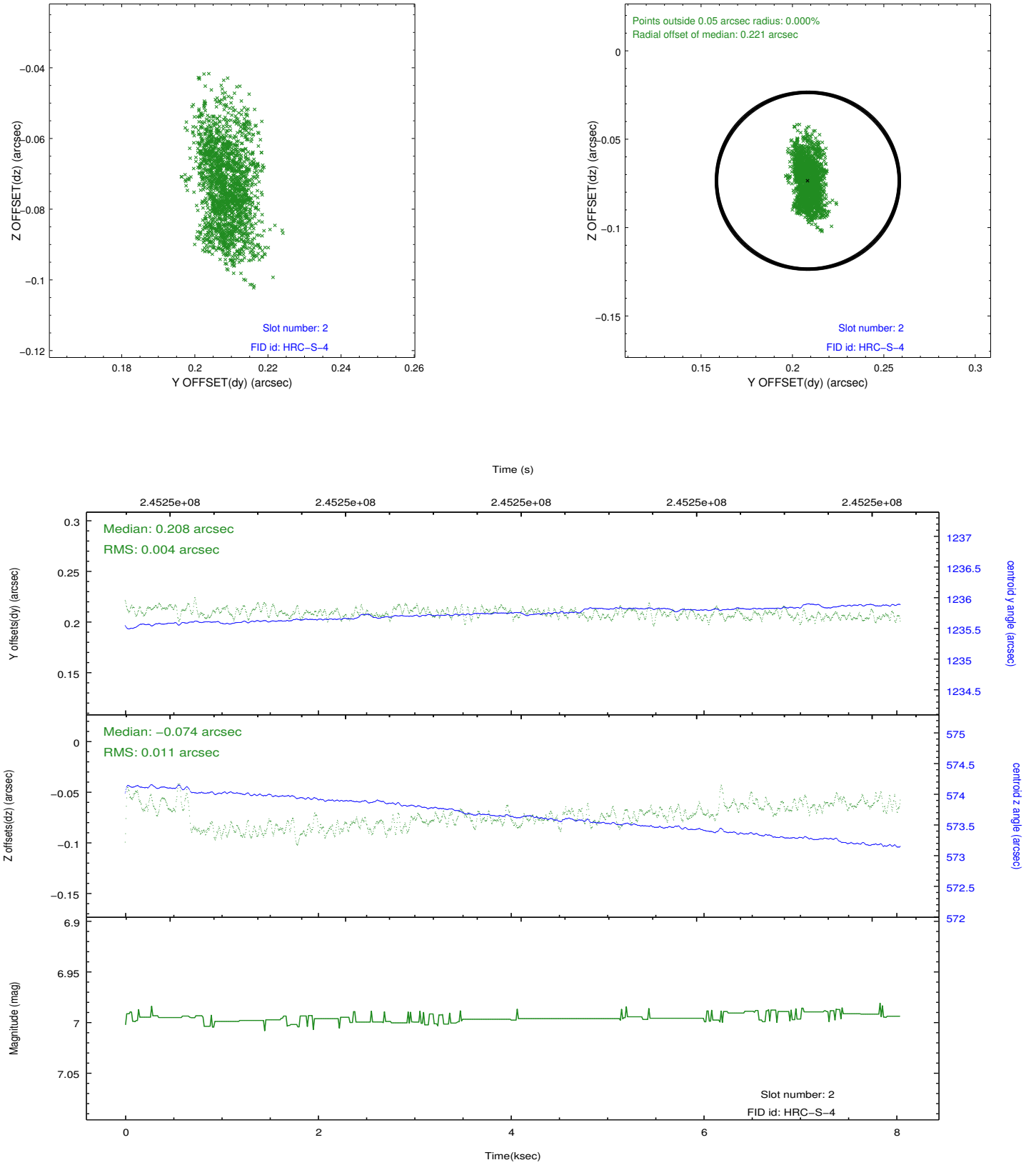
2.5.1 Slot 0



2.5.2 Slot 1

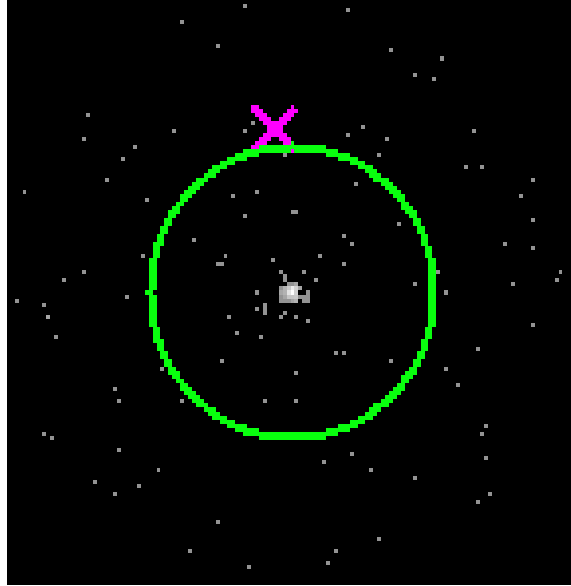


2.5.3 Slot 2

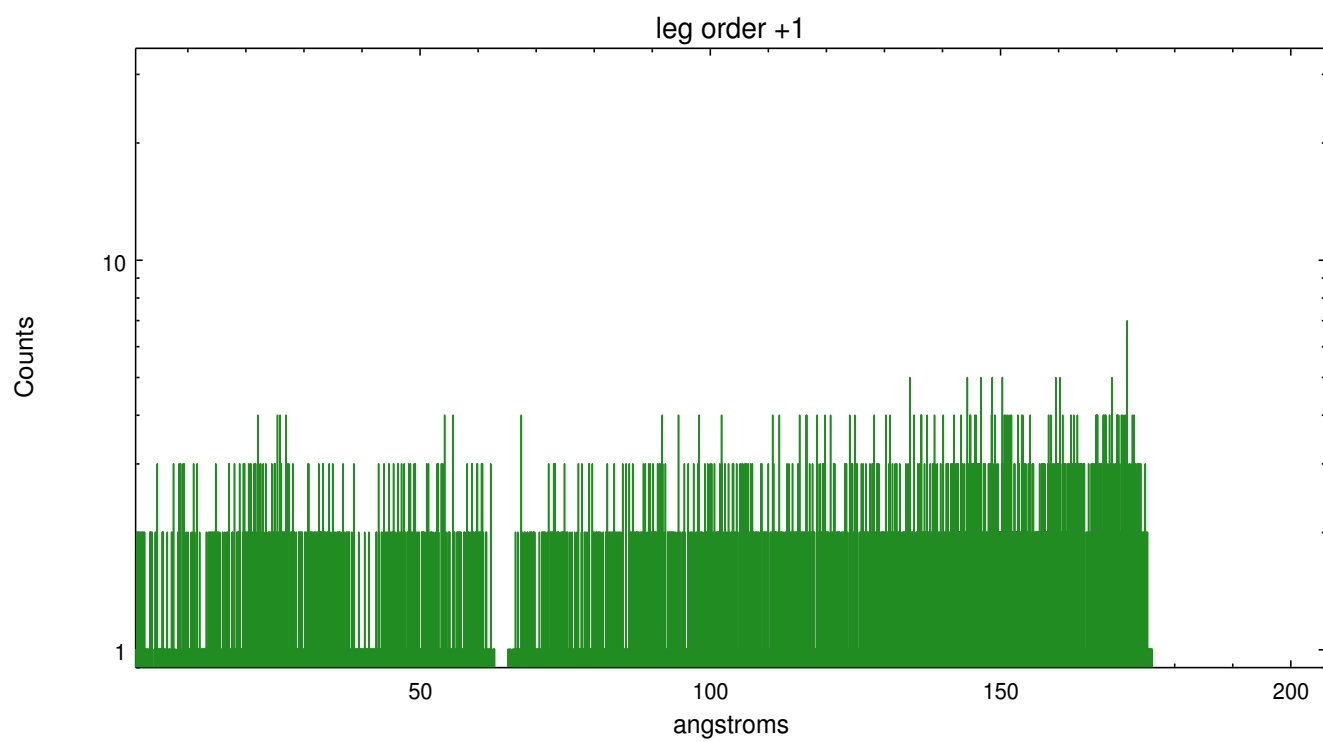
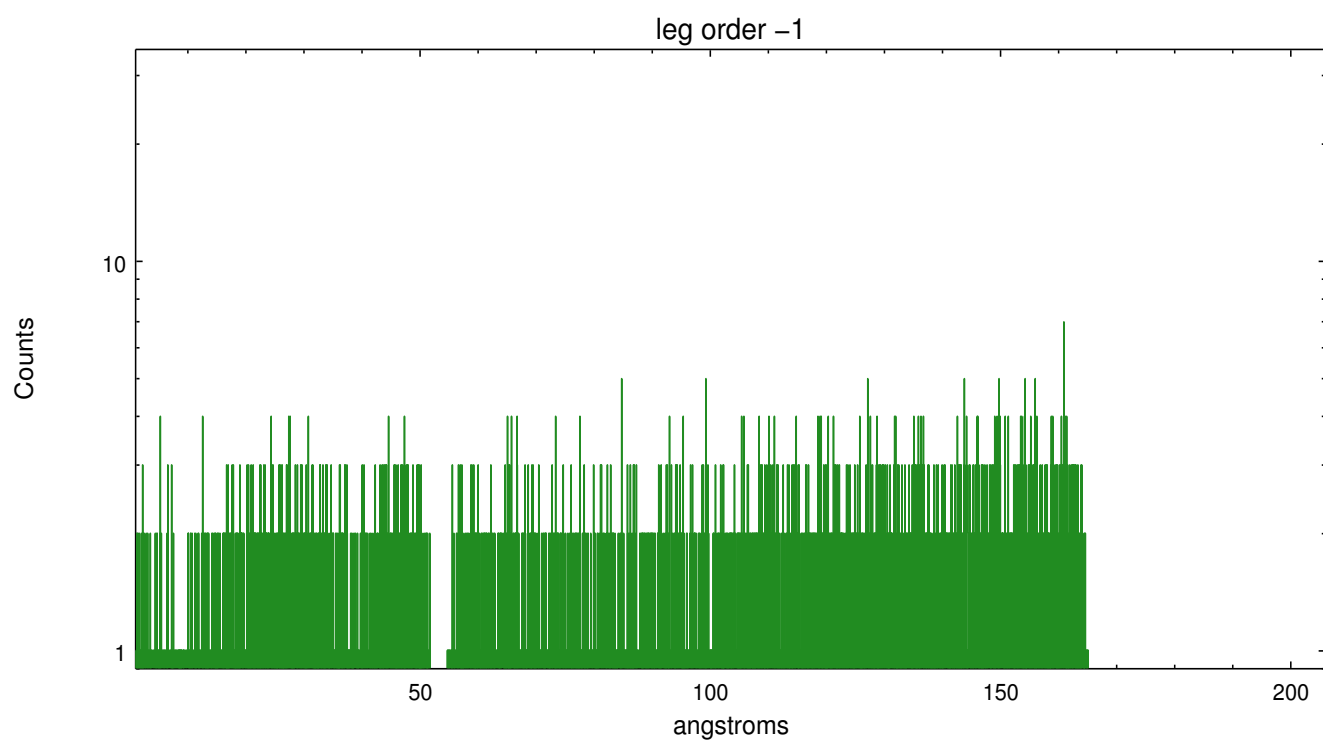


3 Gratings

3.1 LETG Arm



LETG Zero Order



A Summary

A.1 Status

V&V Scientist	Joy Nichols
V&V Date (YYYY-MM-DD)	2013.01.24
V&V Edition	1
V&V Disposition and Status	OK
V&V Charge Time	8.043431

A.2 Comments