

V&V Reference Report

L2 ASCDS Version : 8.4.3.1

Observation 6230 - L2 Version 4
Chandra X-Ray Center

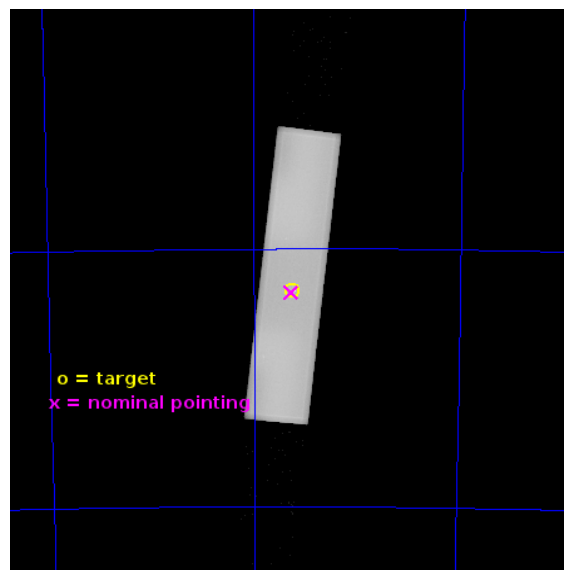
L2 Processing Date : Jun 29 2013

Contents

1	Front	2
2	OBI	3
2.1	OBI	3
2.1.1	Images	3
2.1.2	Parameters	4
2.1.3	Events	4
2.2	Compared Parameters	5
2.3	Aspect	6
2.4	Star Slots	9
2.4.1	Slot 3	9
2.4.2	Slot 4	10
2.4.3	Slot 5	11
2.4.4	Slot 6	12
2.4.5	Slot 7	13
2.5	FID Slots	14
2.5.1	Slot 0	14
2.5.2	Slot 1	15
2.5.3	Slot 2	16
A	Summary	17
A.1	Status	17
A.2	Comments	17

1 Front

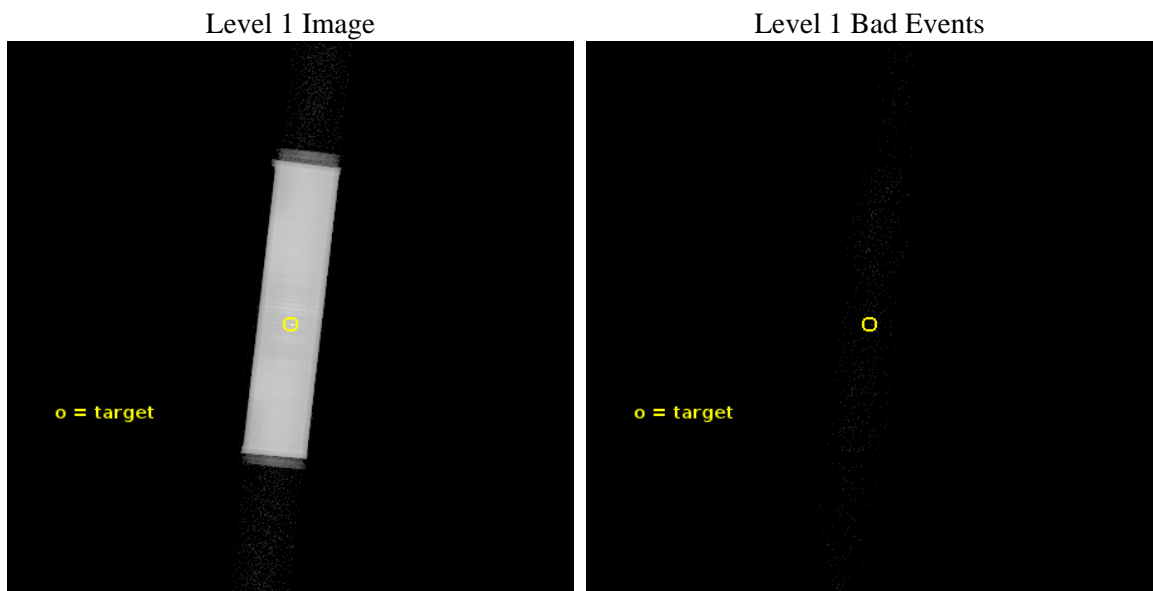
seq_num	500535	Sequence number
obs_id	6230	Observation id
title	Search for Sub-Millisecond Pulsars in 47 Tuc	Proposal title
observer	Prof. Robert Rutledge	Principal investigator
object	47 Tuc	Source name
ra_targ	6.021667	Observer's specified target RA [deg]
dec_targ	-72.080528	Observer's specified target Dec [deg]
ra_nom	6.0229030889492	Nominal RA [deg]
dec_nom	-72.085192585801	Nominal Dec [deg]
roll_nom	276.27688463774	Nominal Roll [deg]
revision	4	Processing version of data
ontime	49395.905413628	[s]
livedtime	44767.510204425	Ontime multiplied by DTCOR
l2events	4039482	Number of level 2 events



2 OBI

2.1 OBI

2.1.1 Images



2.1.2 Parameters

obi_num	0	Obi number	sched_exp_time	49247.820000	[s] Scheduled observation exposure time
ascdsver	10	Processing system revision	ontime	49397.827287376	[s]
caldsver	4.5.7	 	l1events	4994322	Number of level 1 events
date	2013-06-29T03:37:51	Date and time of file creation			
revision	4	Processing version of data			

2.1.3 Events

Level 1 Events

	segment 1	segment 2	segment 3
level 1 events	5558	4986773	1991
rejected events	2108	87498	1879
rejected %	37%	1%	94%

2.2 Compared Parameters

Parameter	Planned	Actual
Instrument	HRC	HRC
Detector	HRC-S	HRC-S
Grating	NONE	NONE
Data mode	OBSERVING	OBSERVING
Observation mode	POINTING	POINTING
[deg] Pointing RA	5.964302	6.022903088949192
[deg] Pointing Dec	-72.063003	-72.08519258580054
[deg] Pointing Roll	276.153787	276.276884637744
[mm] SIM focus pos	-1.533336	-1.526339935833849
[mm] SIM defocus	7.710433287538843e-07	0.006996703570447904
[mm] SIM translation stage pos	250.455976	250.4635187648994
[mm] SIM translation stage offset	0	-0.007540371344731511
[s] Observation start time (MET)	252166176.184000	252164739.73974
Observation start date	2005-12-28T14:08:32	2005-12-28T13:45:39
[s] Observation end time (MET)	252215423.184000	252217240.75467
Observation end date	2005-12-29T03:49:19	2005-12-29T04:20:40

Parameter	Planned	Actual
Obspar format version number	7	7
Obspar file type	PREDICTED	ACTUAL
Obspar update status	NONE	UPDATED

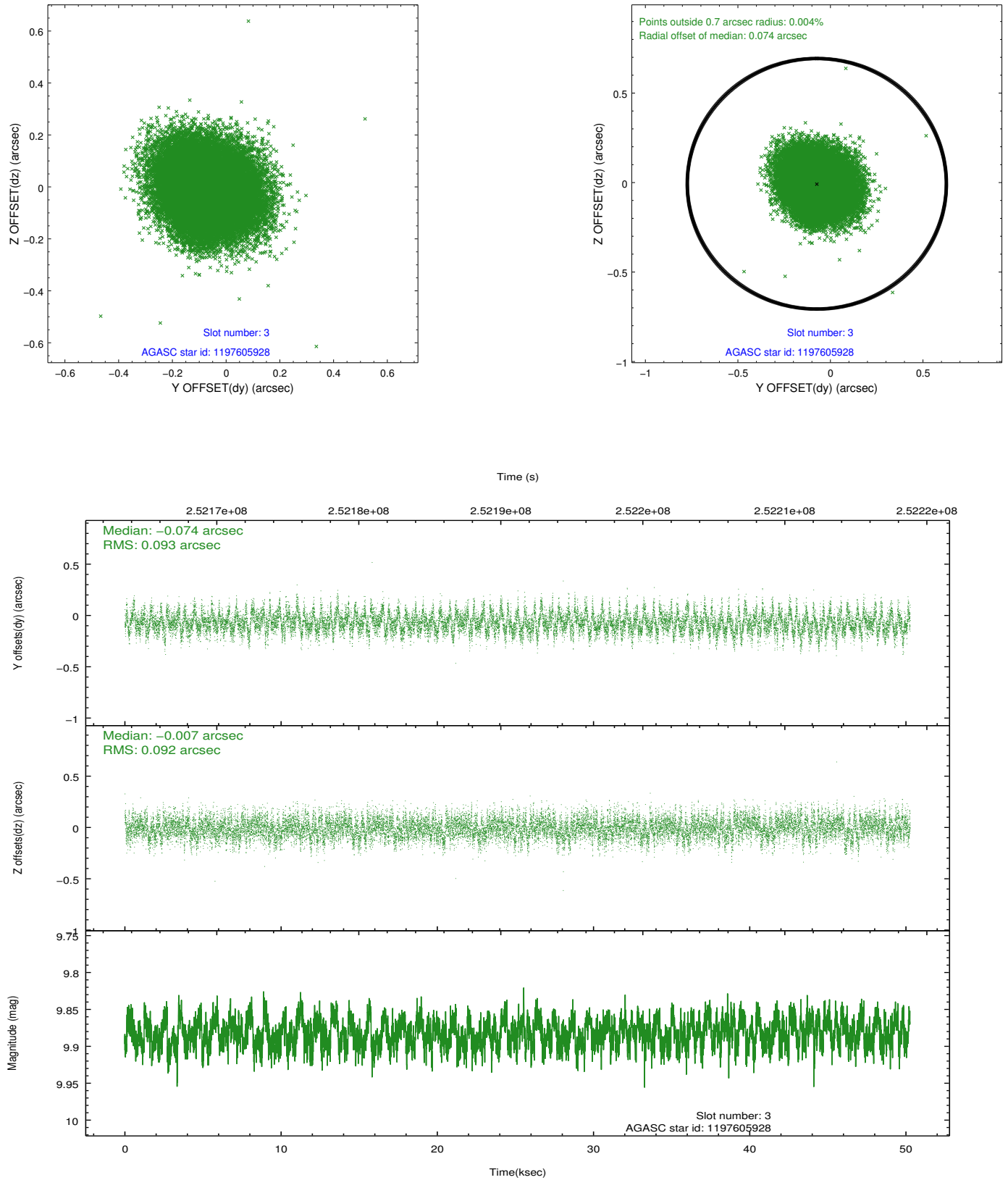
2.3 Aspect

Slot Statistics

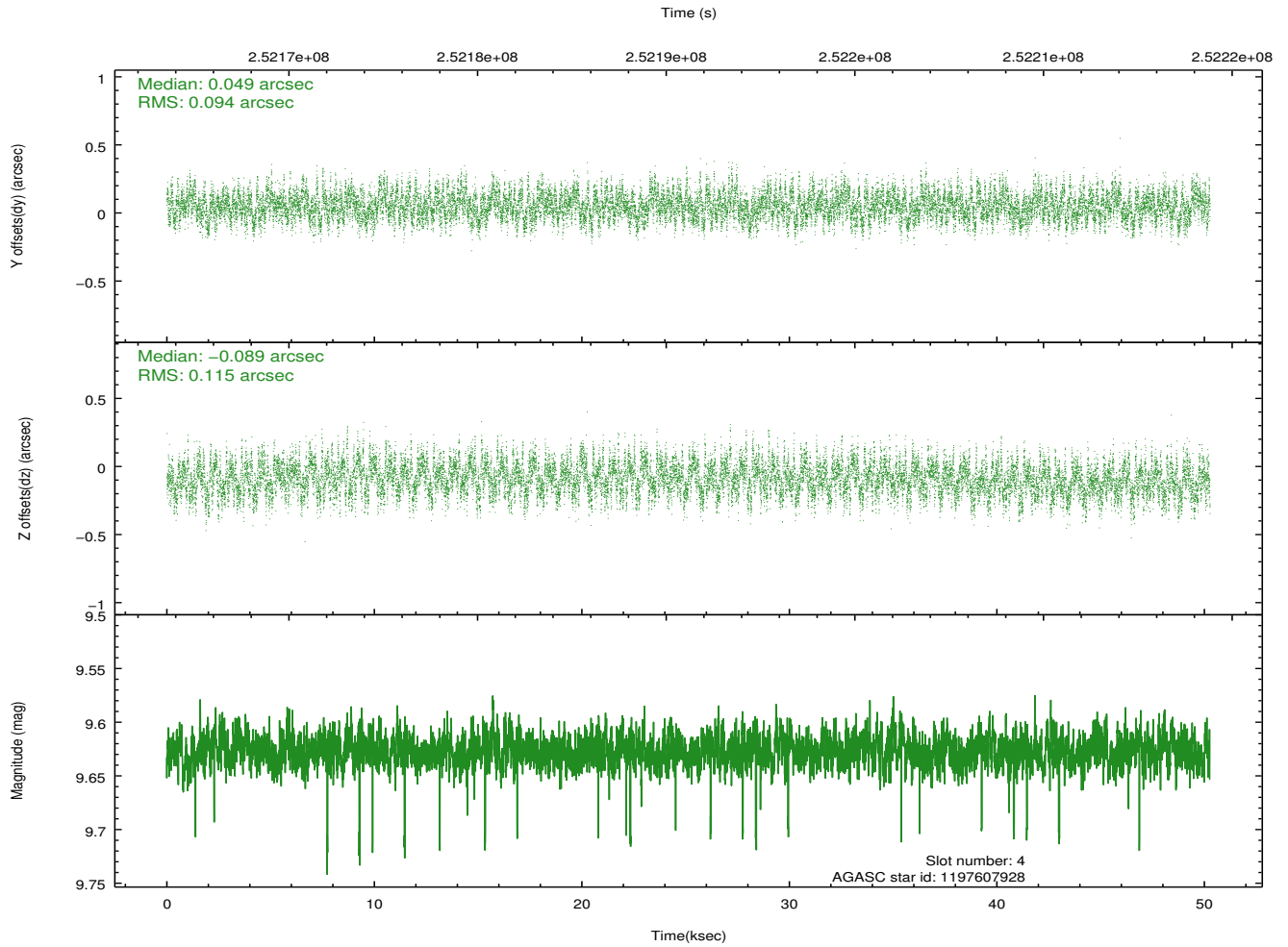
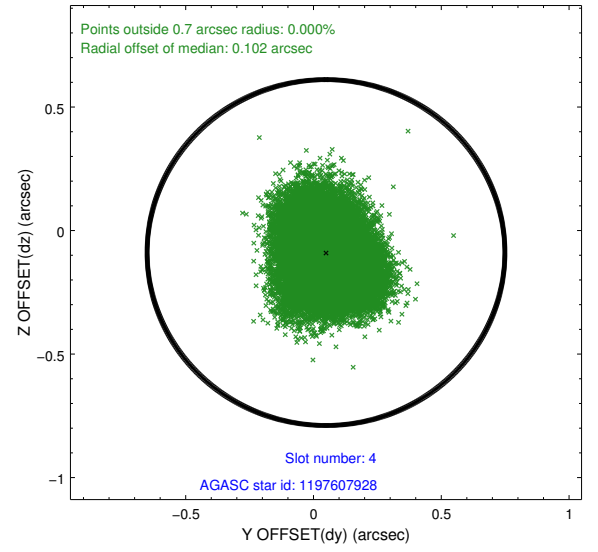
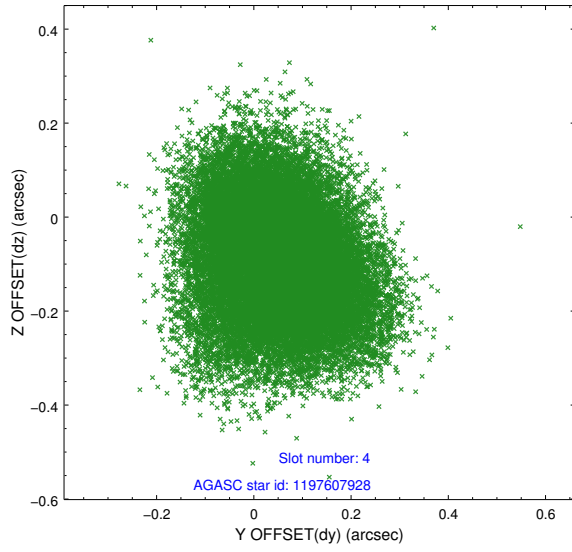
slot	status	id	mag	n_pts	med_dy	med_dz	dr1	dr2	ra	dec	mean_y	mean_z
0	FID	HRC-S-1	7.00	12257	0.088	-0.145	0.025	0.069	0.000000	0.000000	-1163.41	-460.88
1	FID	HRC-S-3	7.01	12261	0.094	-0.070	0.023	0.072	0.000000	0.000000	-1166.25	568.70
2	FID	HRC-S-4	6.97	12260	0.214	-0.082	0.015	0.029	0.000000	0.000000	1234.83	571.38
3	GUIDE	1197605928	9.88	24505	-0.074	-0.007	0.140	0.225	4.361277	-72.423732	1128.33	-1873.67
4	GUIDE	1197607928	9.63	24377	0.049	-0.089	0.159	0.253	7.837743	-72.165759	621.07	2010.60
5	GUIDE	1197617752	10.26	24493	-0.034	0.250	0.187	0.306	4.480632	-72.284129	637.95	-1702.64
6	GUIDE	1197619752	10.02	24410	0.092	-0.115	0.178	0.346	4.510721	-71.856694	-892.44	-1542.26
7	GUIDE	1197609880	10.16	24494	-0.031	-0.032	0.188	0.315	4.410960	-71.992353	-415.31	-1693.74

2.4 Star Slots

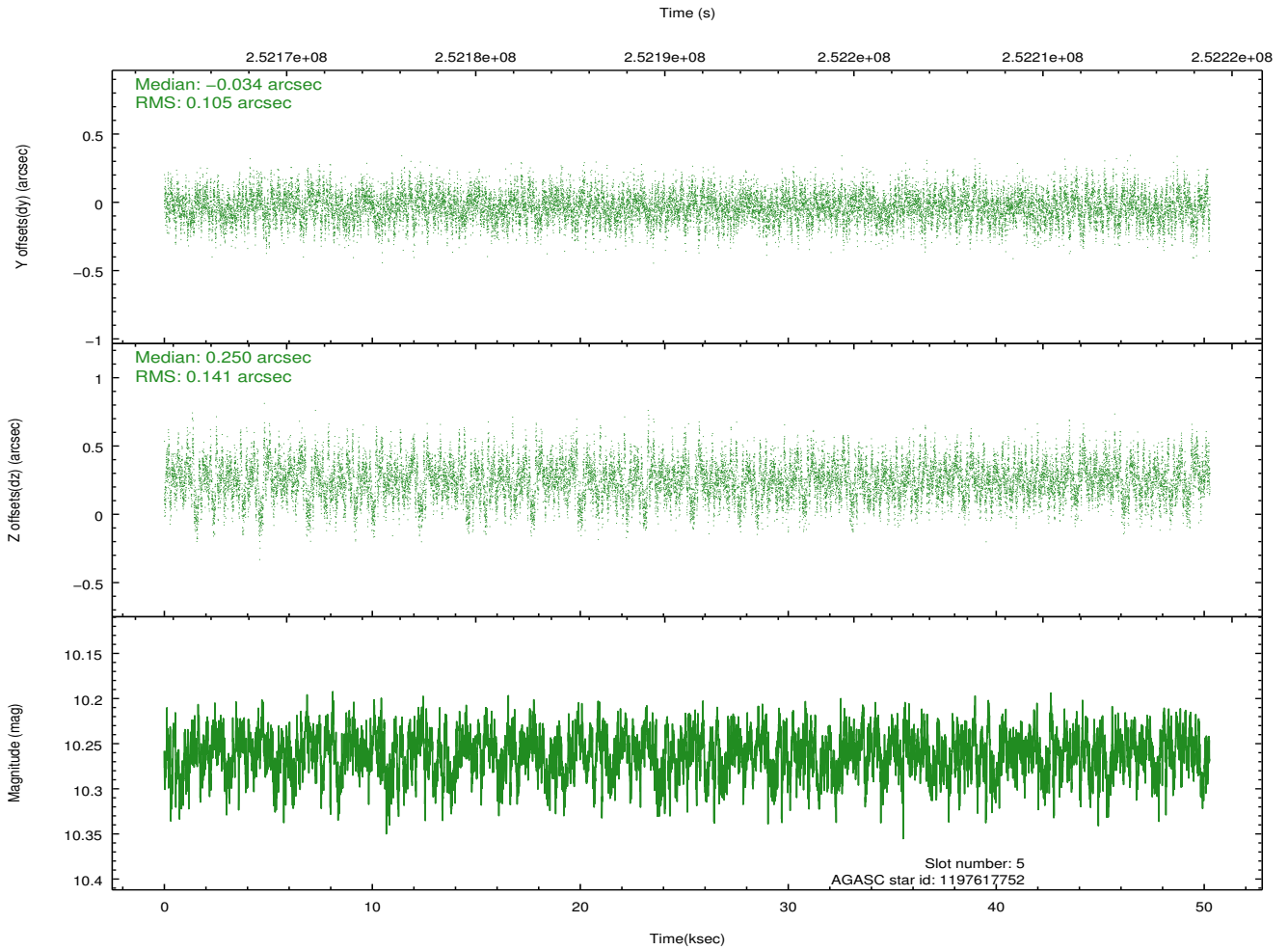
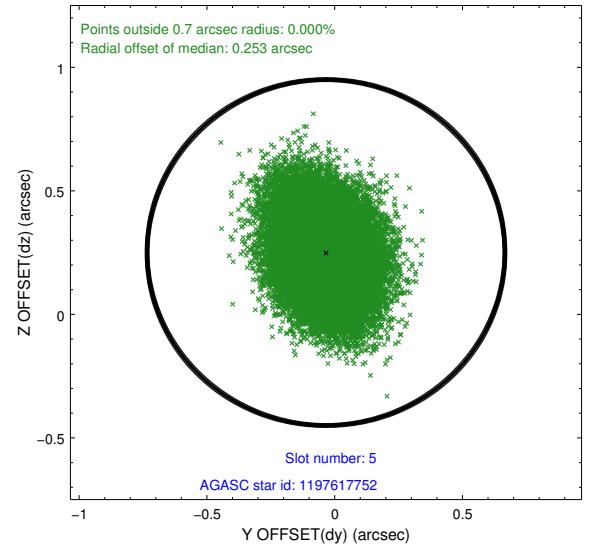
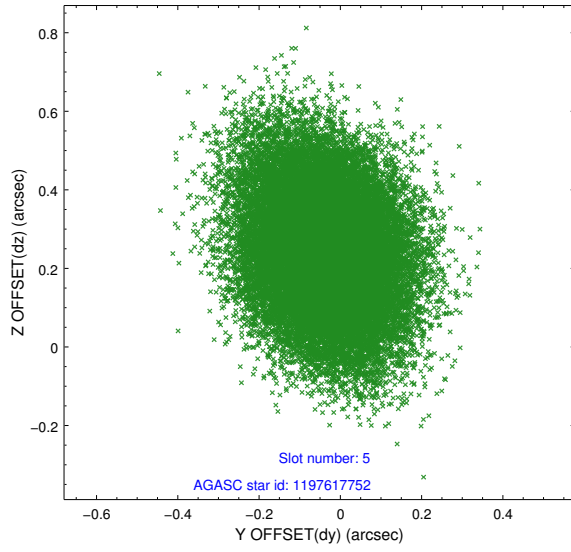
2.4.1 Slot 3



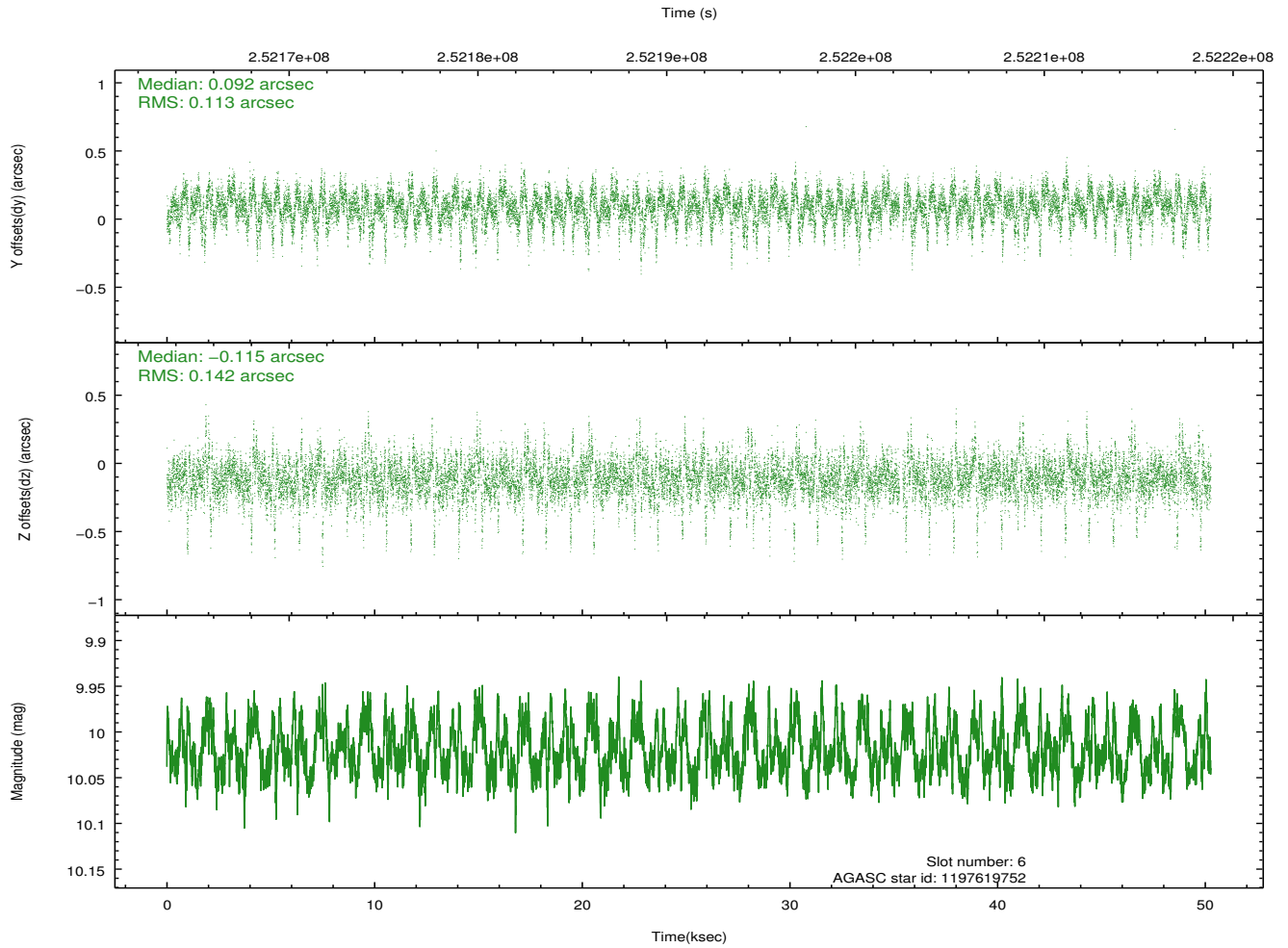
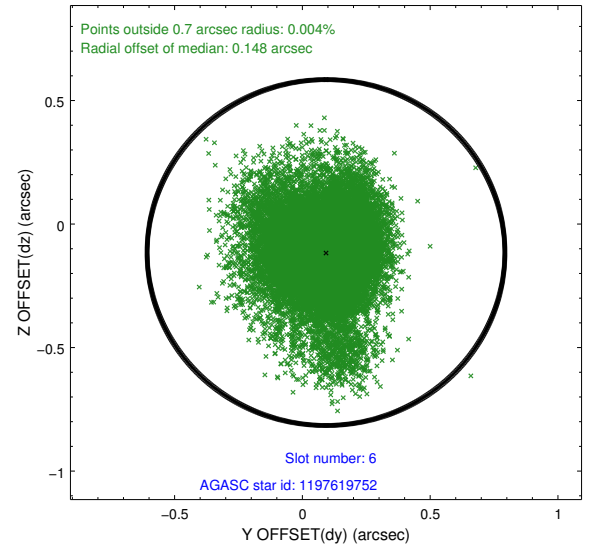
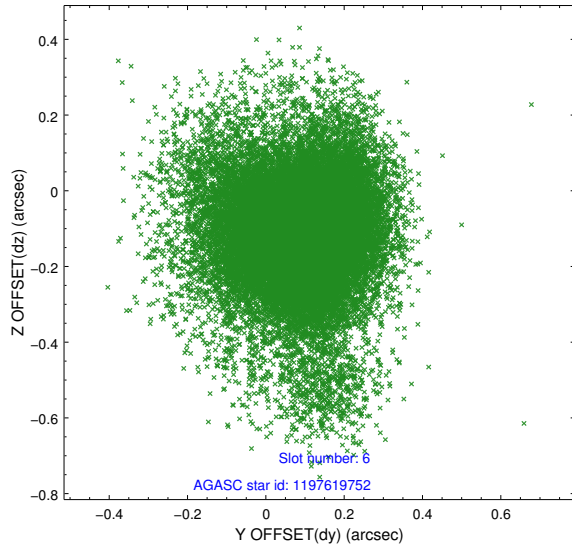
2.4.2 Slot 4



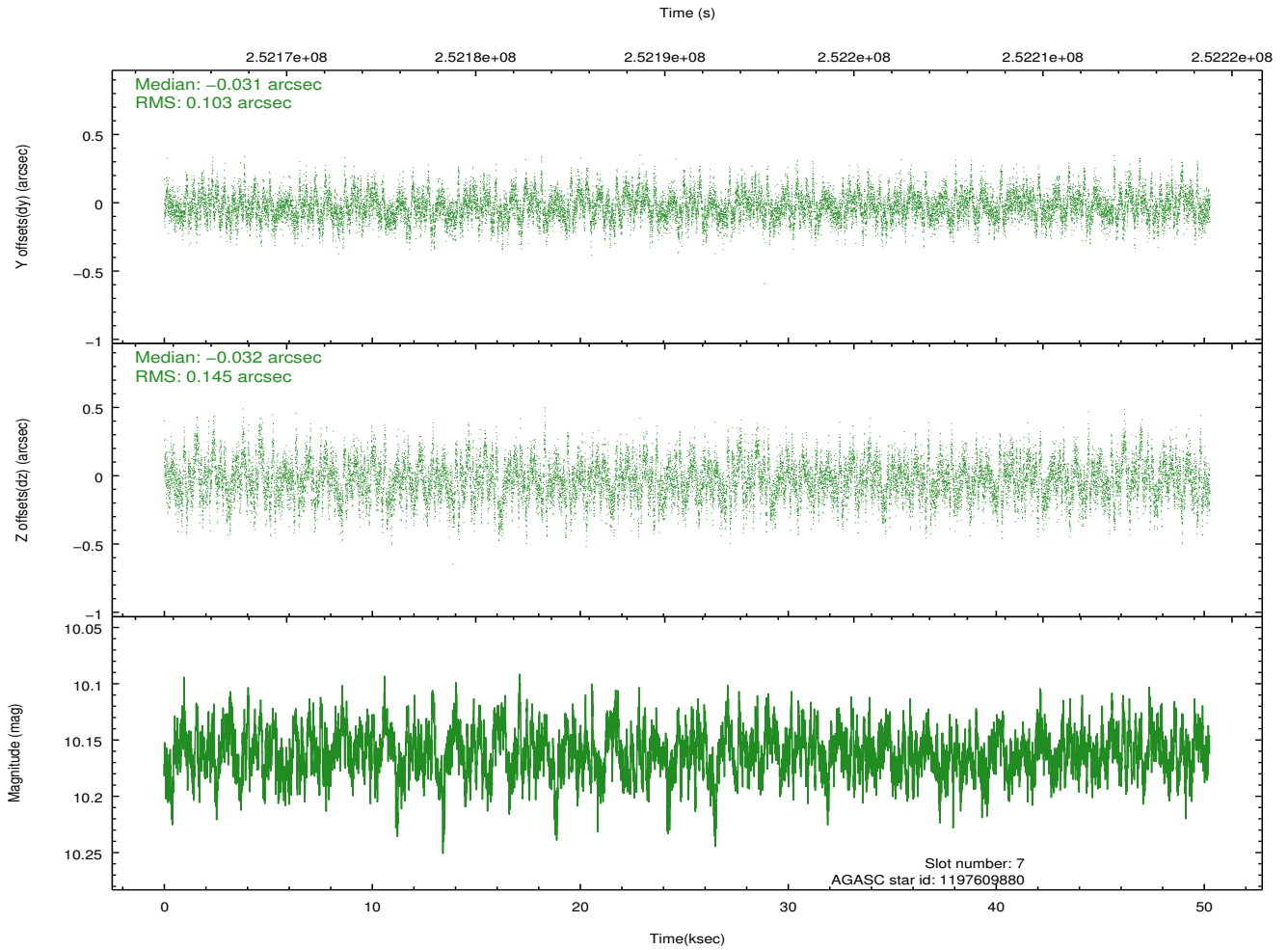
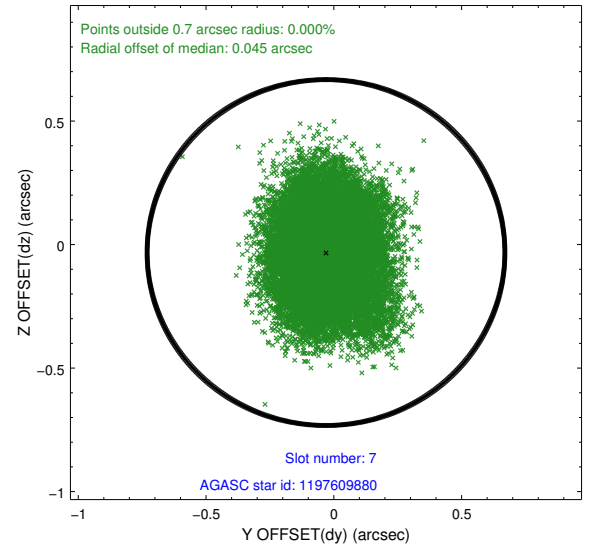
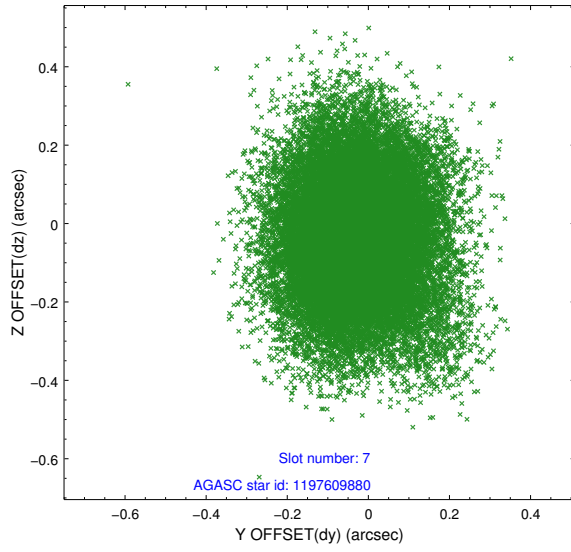
2.4.3 Slot 5



2.4.4 Slot 6

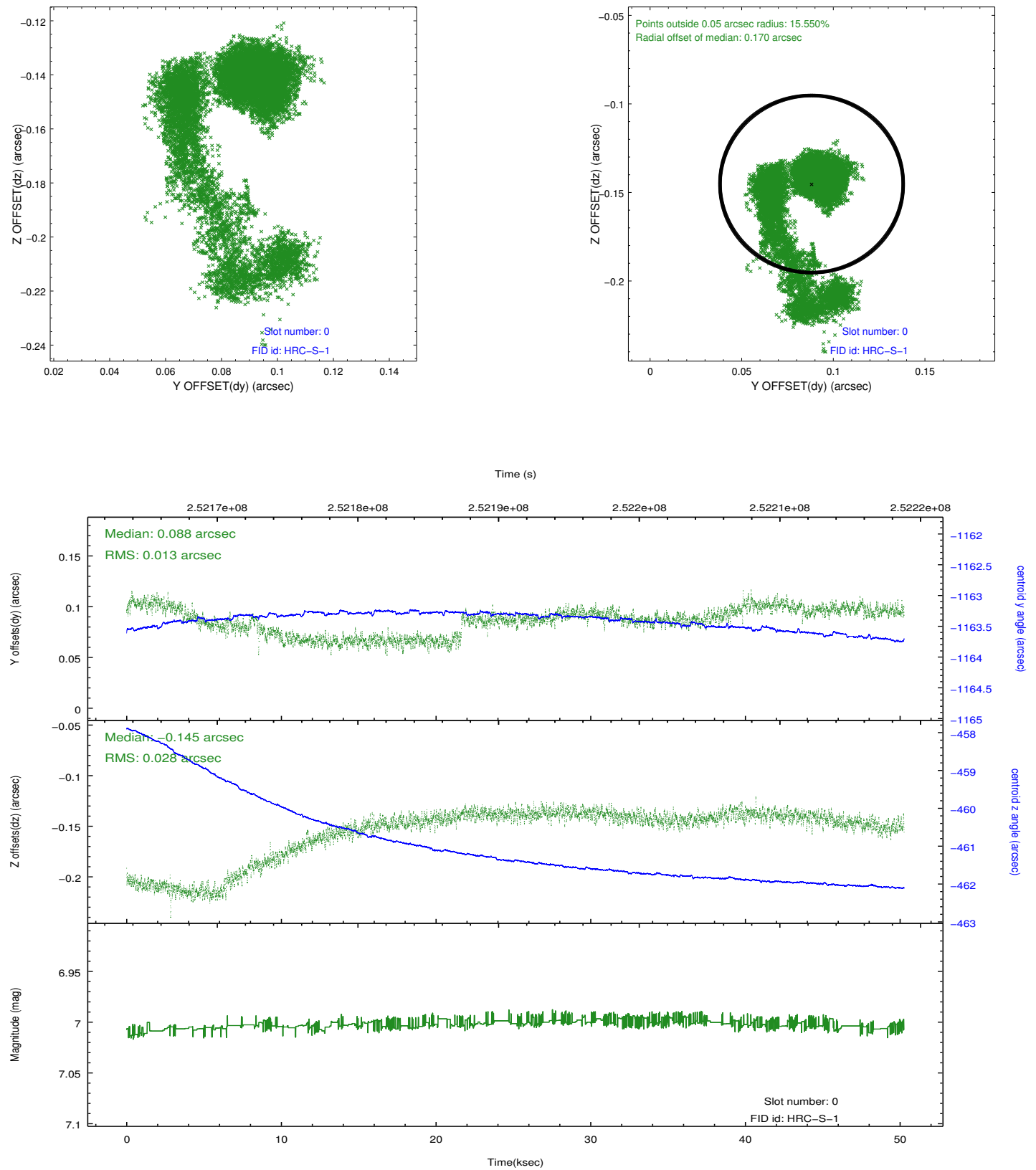


2.4.5 Slot 7

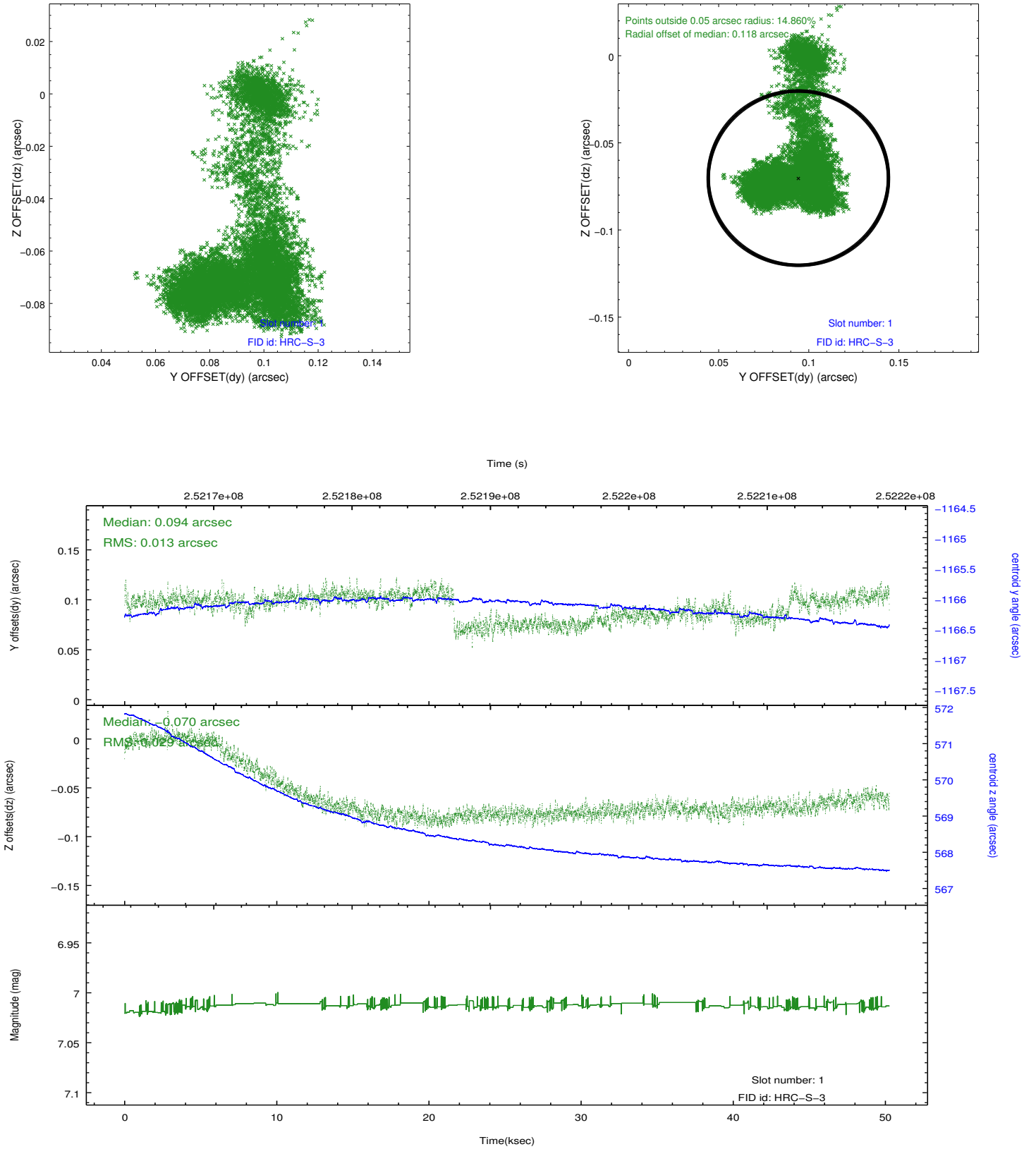


2.5 FID Slots

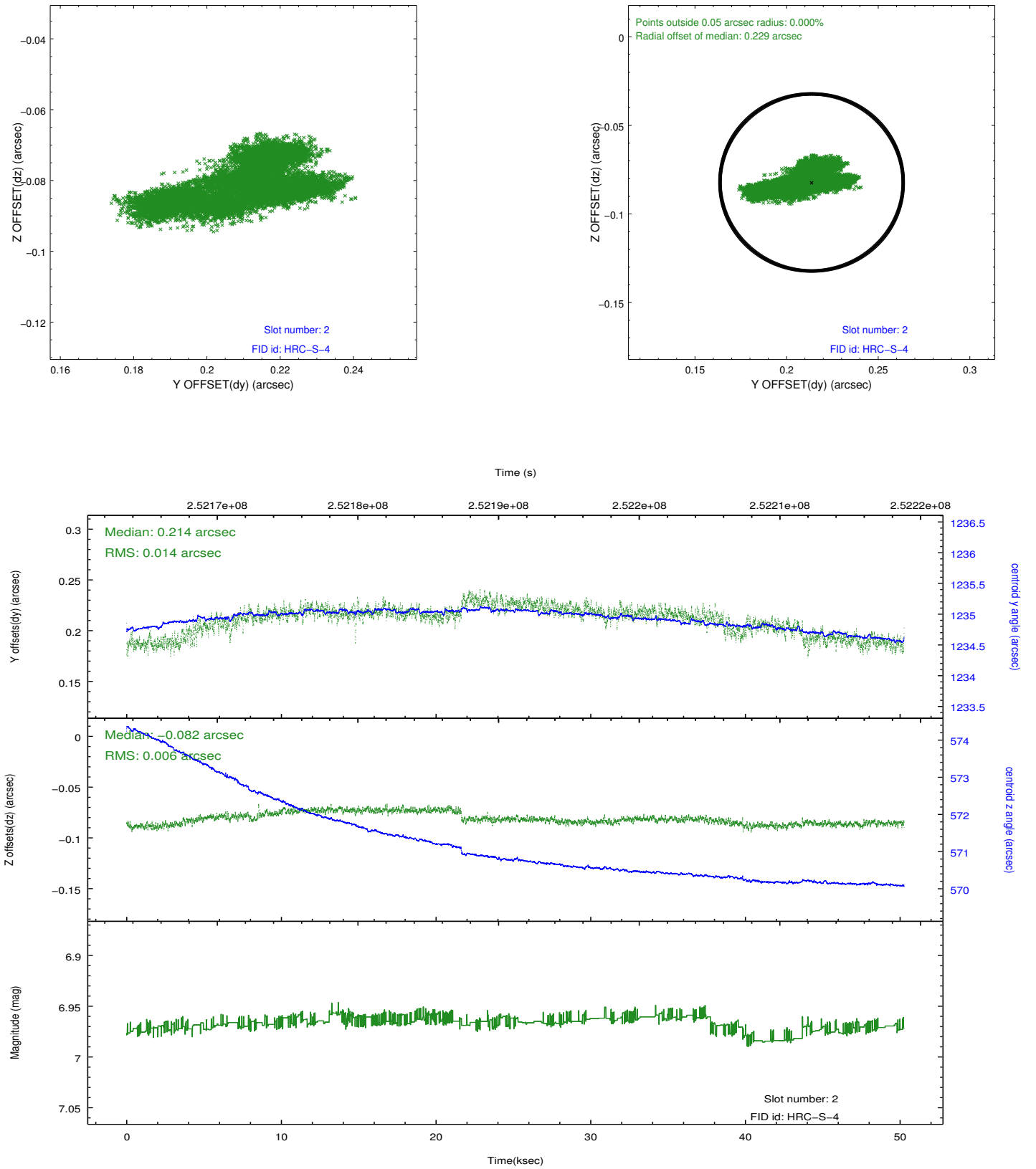
2.5.1 Slot 0



2.5.2 Slot 1



2.5.3 Slot 2



A Summary

A.1 Status

V&V Scientist	Beth Sundheim
V&V Date (YYYY-MM-DD)	2013.07.01
V&V Edition	1
V&V Disposition and Status	OK
V&V Charge Time	49.39552

A.2 Comments