

V&V Reference Report

L2 ASCDS Version : 10.9.1

Observation 5594 - L2 Version 4
Chandra X-Ray Center

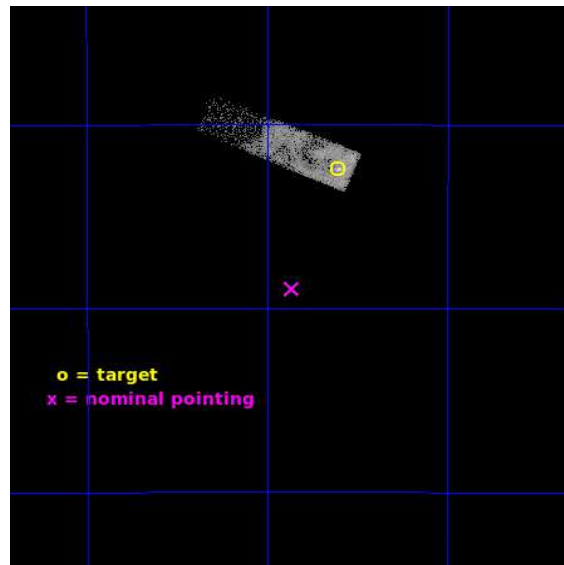
L2 Processing Date : Oct 9 2020

Contents

1	Front	2
2	OBI	3
2.1	OBI	3
2.1.1	Images	3
2.1.2	Bias	3
2.1.3	Parameters	4
2.1.4	Events	4
2.2	Compared Parameters	5
2.3	Aspect	6
2.4	Star Slots	9
2.4.1	Slot 3	9
2.4.2	Slot 4	10
2.4.3	Slot 5	11
2.4.4	Slot 6	12
2.4.5	Slot 7	13
2.5	FID Slots	14
2.5.1	Slot 0	14
2.5.2	Slot 1	15
2.5.3	Slot 2	16
A	Summary	17
A.1	Status	17
A.2	Comments	17

1 Front

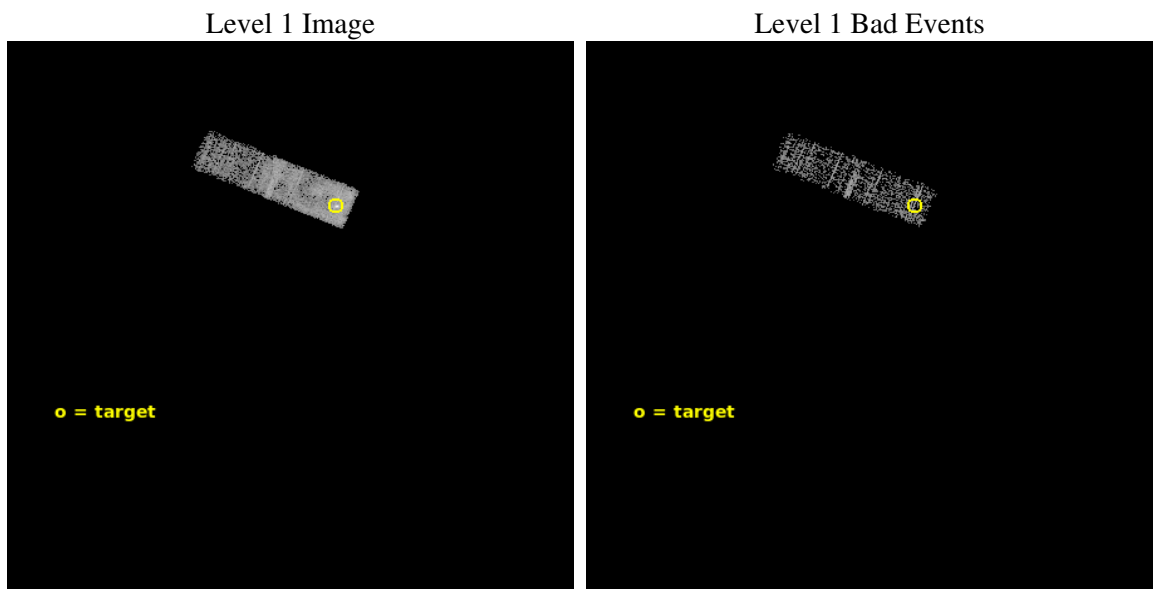
seq_num	500583	Sequence number
obs_id	5594	Observation id
title	Monitoring of the Central Object in RCW103	Proposal title
observer	Gordon Garmire	Principal investigator
object	RCW103	Source name
dtcycle	0	
cycle	P	events from which exps? Prim/Second/Both
ra_targ	244.40125	Observer's specified target RA [deg]
dec_targ	-51.040278	Observer's specified target Dec [deg]
ra_nom	244.46559753868	Nominal RA [deg]
dec_nom	-51.148872616925	Nominal Dec [deg]
roll_nom	292.86262672076	Nominal Roll [deg]
revision	4	Processing version of data
ontime	5183.2000772357	Sum of GTIs [s]
livetime	4930.2768736191	Livetime [s]
ontime3	5183.2000772357	Sum of GTIs [s]
l2events	11127	Number of level 2 events



2 OBI

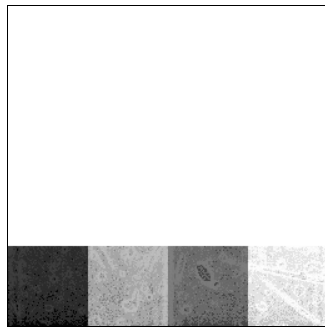
2.1 OBI

2.1.1 Images



2.1.2 Bias

Chip 3



2.1.3 Parameters

obi_num	0	Obi number	sched_exp_time	5000.000000	[s] Scheduled observation exposure time
ascdsver	10.9.1	Processing system revision	ontime	5183.2000772357	Sum of GTIs [s]
caldsver	4.9.2	 	ontime3	5183.2000772357	Sum of GTIs [s]
date	2020-10-09T07:21:58	Date and time of file creation	l1events	20637	Number of level 1 events
revision	4	Processing version of data			

2.1.4 Events

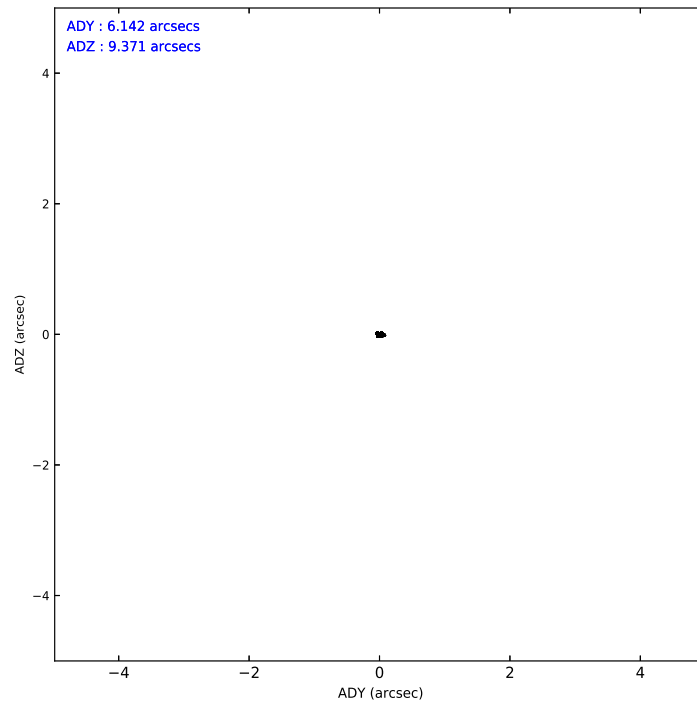
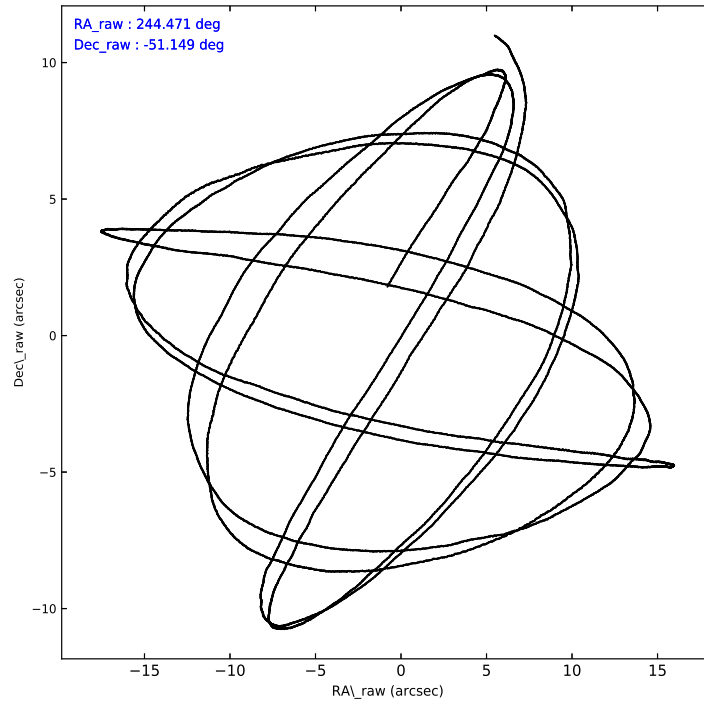
	ccd 3
level 1 events	20637
rejected events	9118
rejected %	44%

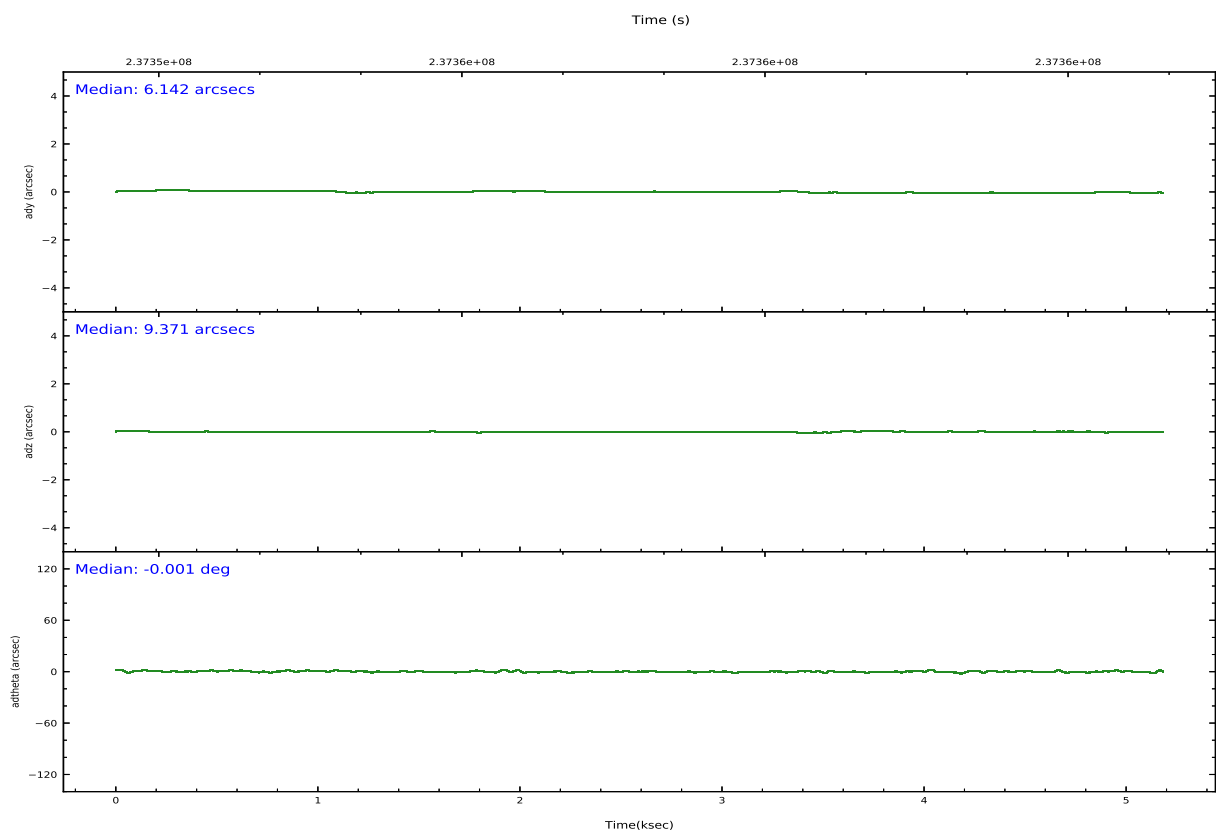
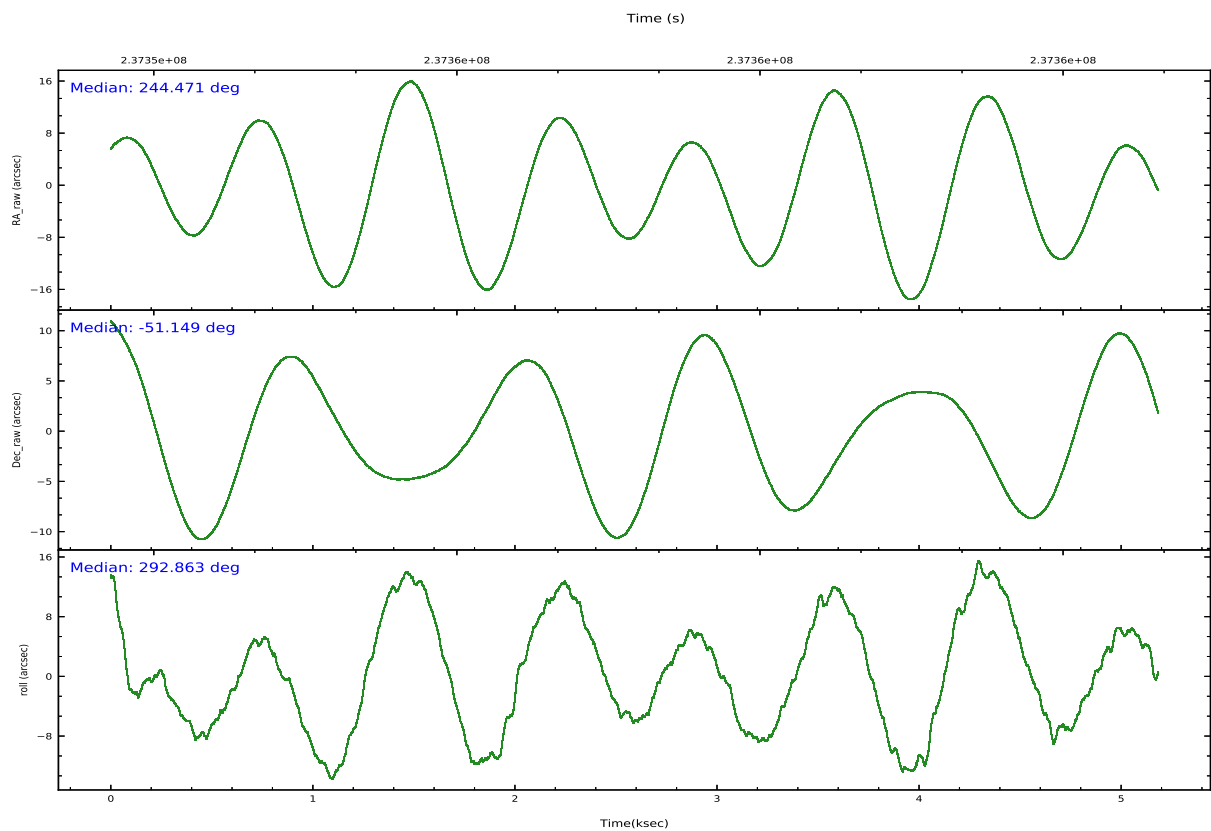
	ccd 3
grade 0 events	9428
	45%
grade 1 events	13
	0%
grade 2 events	1108
	5%
grade 3 events	425
	2%
grade 4 events	367
	1%
grade 5 events	156
	0%
grade 6 events	251
	1%
grade 7 events	8889
	43%

2.2 Compared Parameters

Parameter	Planned	Actual	Parameter	Planned	Actual
Instrument	ACIS	ACIS	Obspar version number	8	8
Detector	ACIS-3	ACIS-3	Obspar file type	PREDICTED	ACTUAL
Grating	NONE	NONE	Obspar update status	NONE	UPDATED
Data mode	VFAINT	VFAINT	Number of optional ACIS chips dropped	0	0
Observation mode	POINTING	POINTING	On-chip summing requested	N	N
[deg] Pointing RA	244.435790	244.46559753868	Subarray requested	CUSTOM	1/4
[deg] Pointing Dec	-51.133067	-51.148872616925	Subarray start row	1	1
[deg] Pointing Roll	292.634234	292.86262672076	Subarray row count	256	256
[mm] SIM focus pos	-0.782348	-0.7809083437167272	Alternating exposures requested	N	N
[mm] SIM defocus	0	0.001439871863259334	[s] Primary exposure time	0.000000	0.8
[mm] SIM translation stage pos	-233.592463	-233.5874344608287			
[mm] SIM translation stage offset	0	-0.005018542100998502			
[s] Observation start time (MET)	237353471.184000	237352819.73308			
Observation start date	2005-07-10T03:30:07	2005-07-10T03:20:19			
[s] Observation end time (MET)	237358471.184000	237359397.67088			
Observation end date	2005-07-10T04:53:27	2005-07-10T05:09:57			
Read mode	TIMED	TIMED			

2.3 Aspect



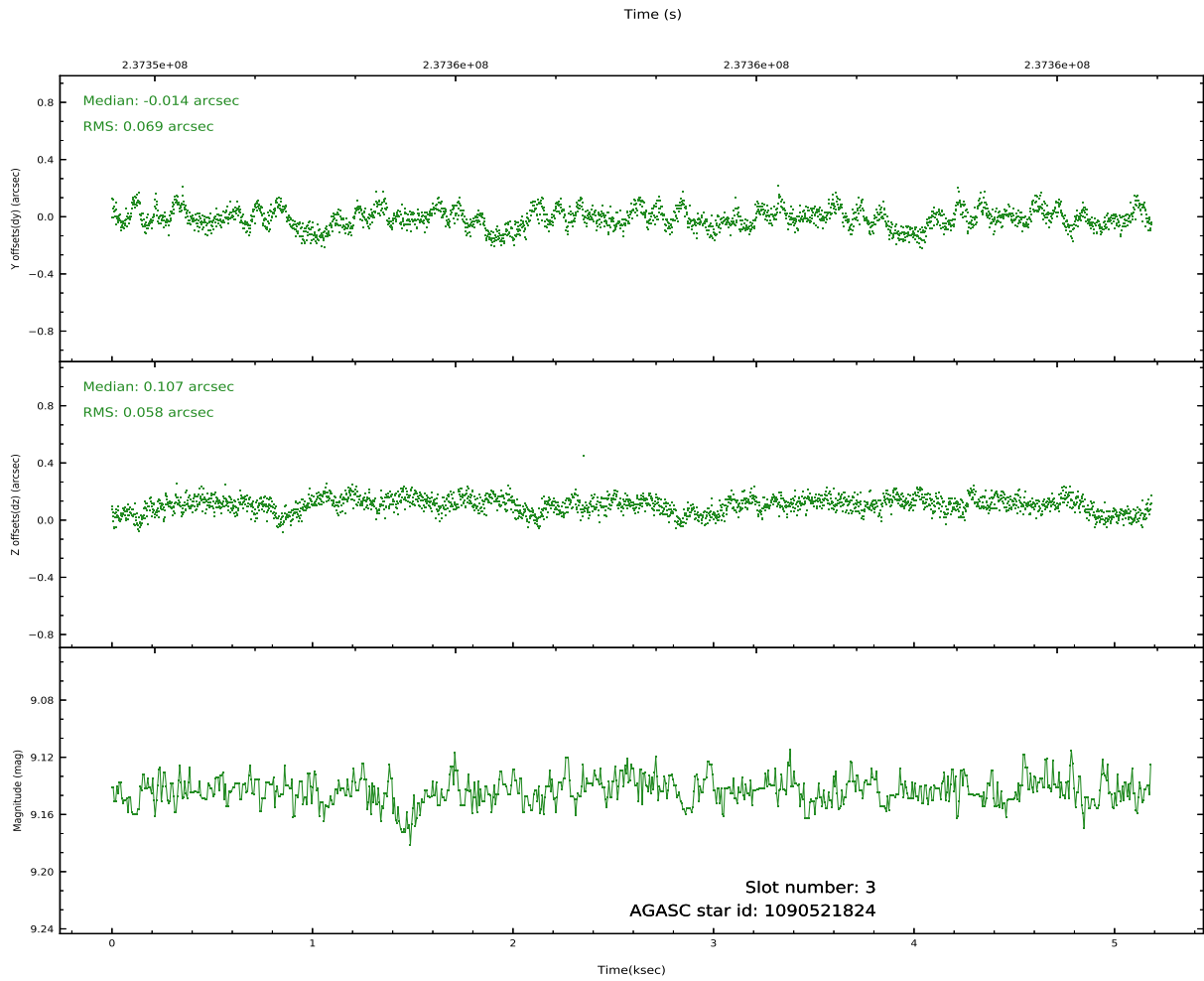
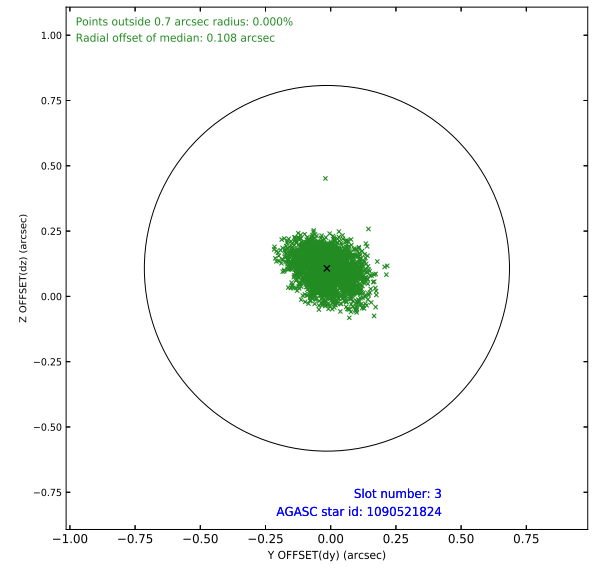
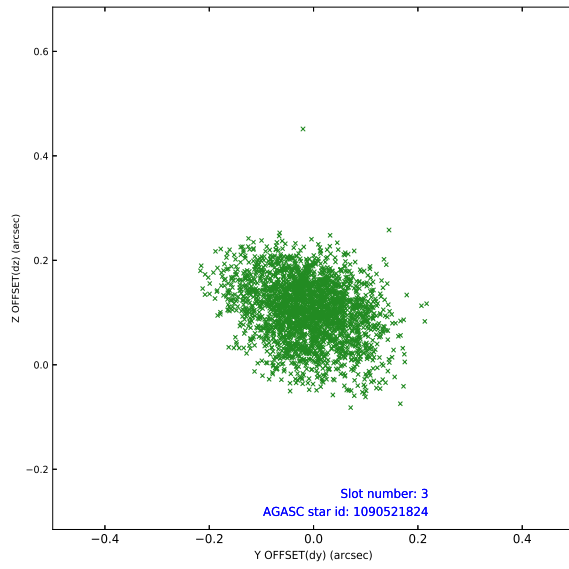


Slot Statistics

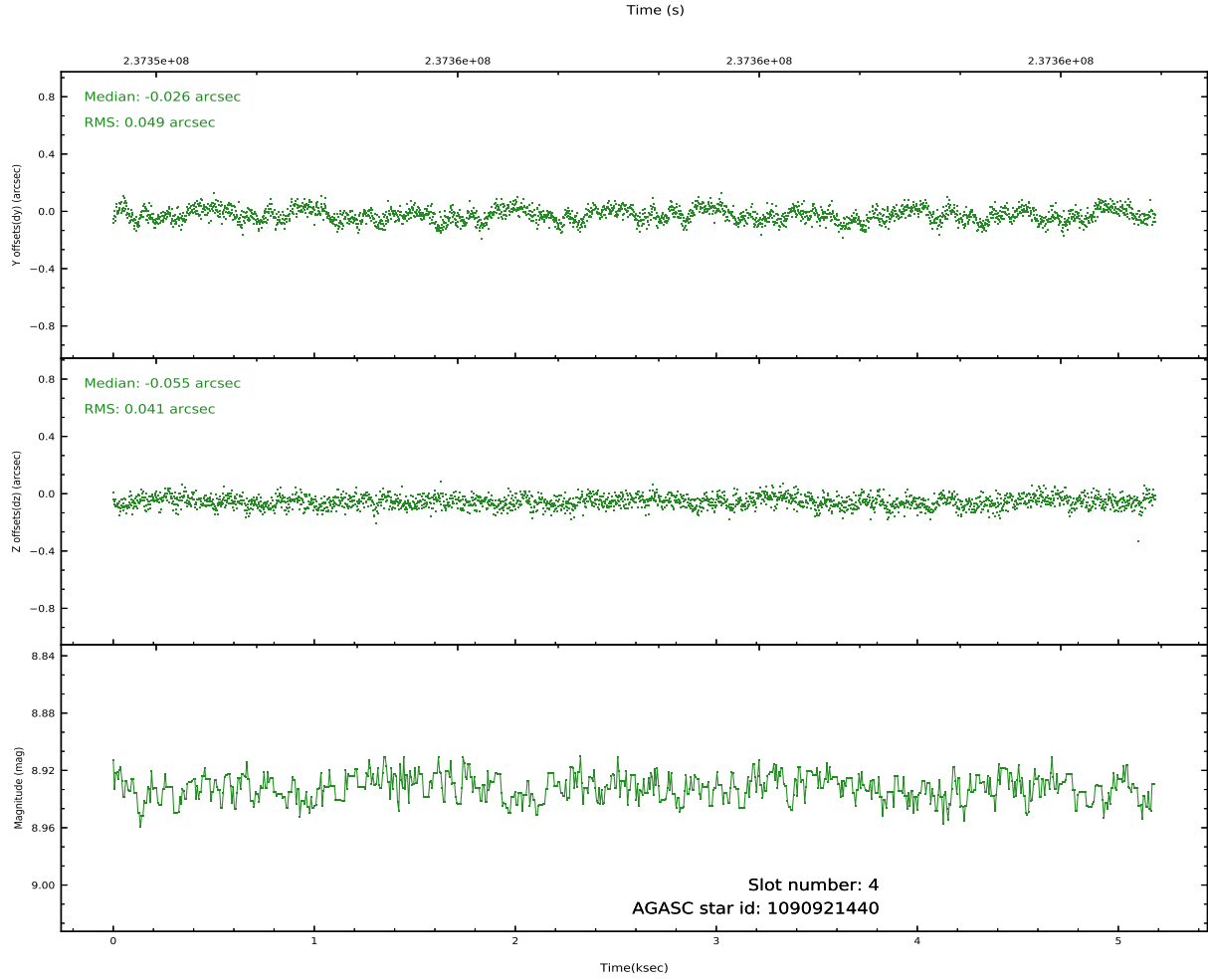
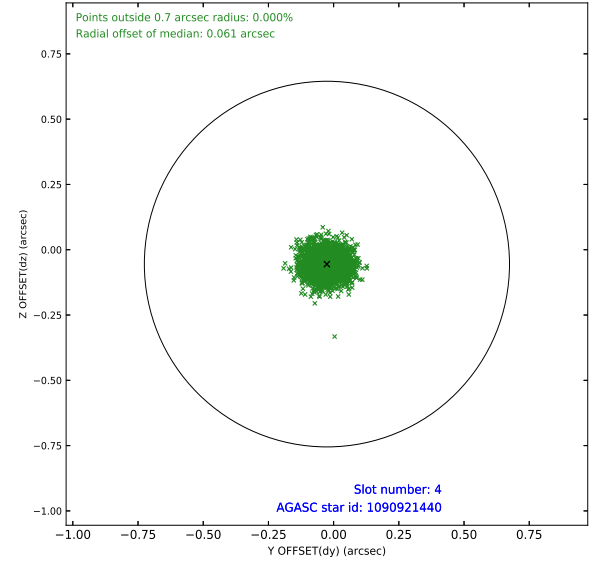
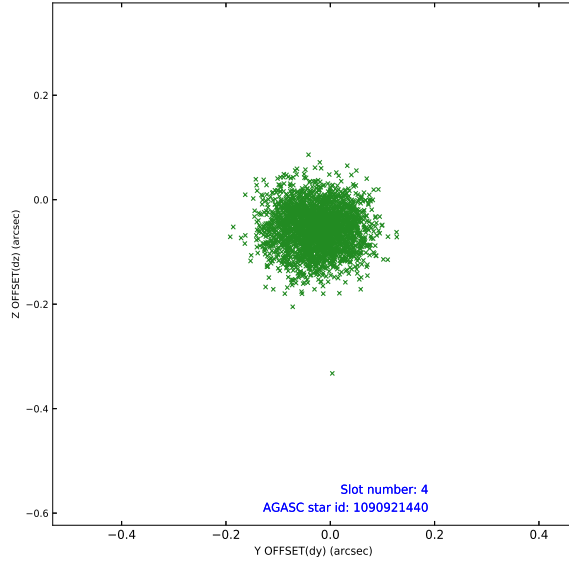
pt	status	used	id	mag	n_pts	frac_pts	med_dy	med_dz	dr1	dr2	ra	dec	mean_y	mea
0	FID		ACIS-I-1	7.25	1265	1.000	-0.069	-0.005	0.007	0.013	0.000000	0.000000	933.48	-832
1	FID		ACIS-I-4	7.18	1265	1.000	0.046	0.057	0.009	0.015	0.000000	0.000000	2154.33	1066
2	FID		ACIS-I-6	7.26	1265	1.000	-0.074	0.014	0.008	0.014	0.000000	0.000000	400.94	1709
3	GUIDE	used	1090521824	9.14	2529	1.000	-0.014	0.107	0.097	0.154	244.711253	-50.470098	-1958.66	1500
4	GUIDE	used	1090921440	8.93	2529	1.000	-0.026	-0.055	0.069	0.109	243.292741	-50.752608	-2247.63	-1883
5	GUIDE	used	1090924096	8.06	2530	1.000	0.086	-0.063	0.055	0.088	243.849549	-51.016855	-892.50	-1067
6	GUIDE	used	1090924384	8.06	2530	1.000	-0.045	-0.049	0.075	0.116	243.330505	-50.934017	-1608.87	-2046
7	GUIDE	used	1091059112	9.07	2528	1.000	-0.007	0.065	0.079	0.127	245.180420	-50.736664	-656.92	2110

2.4 Star Slots

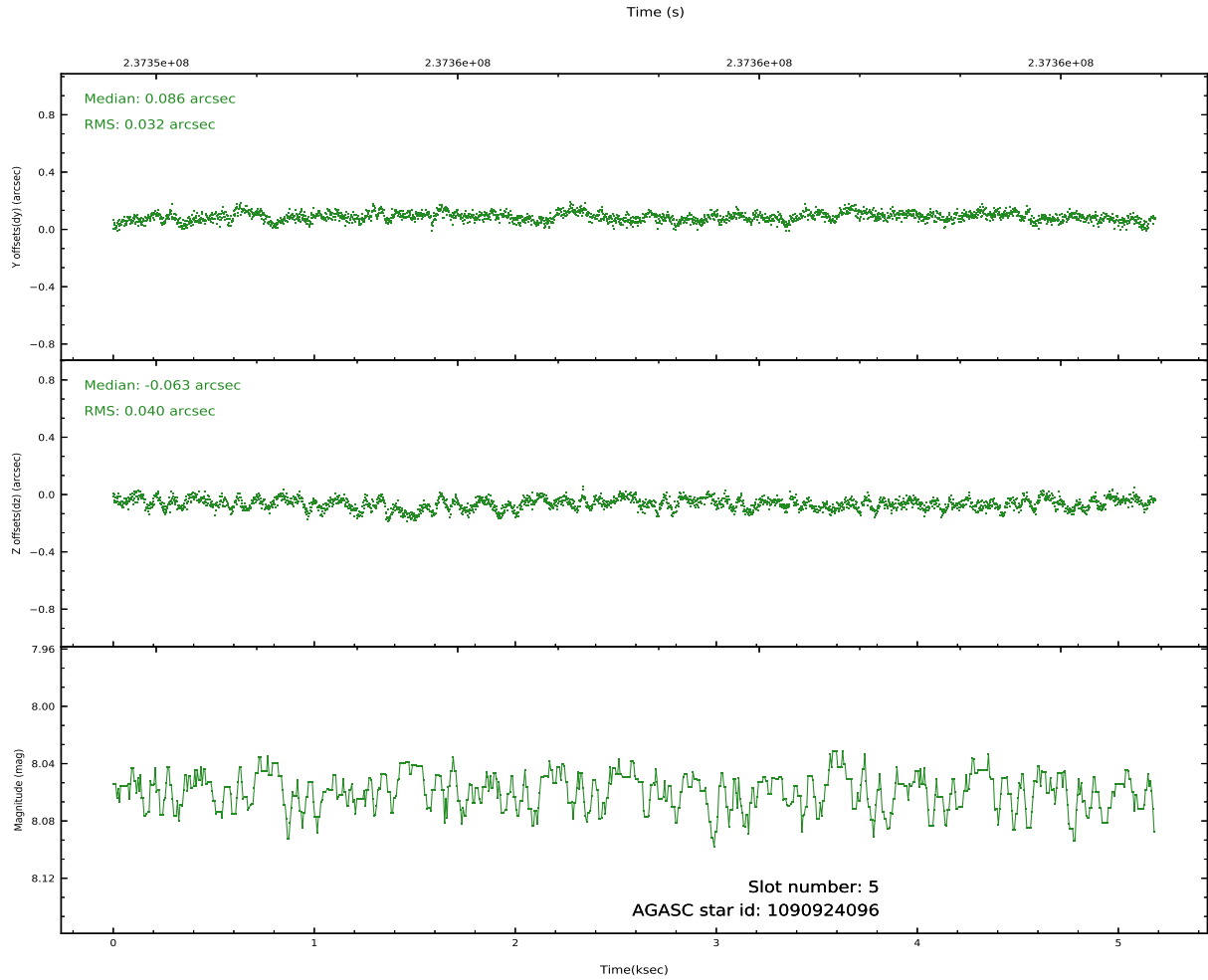
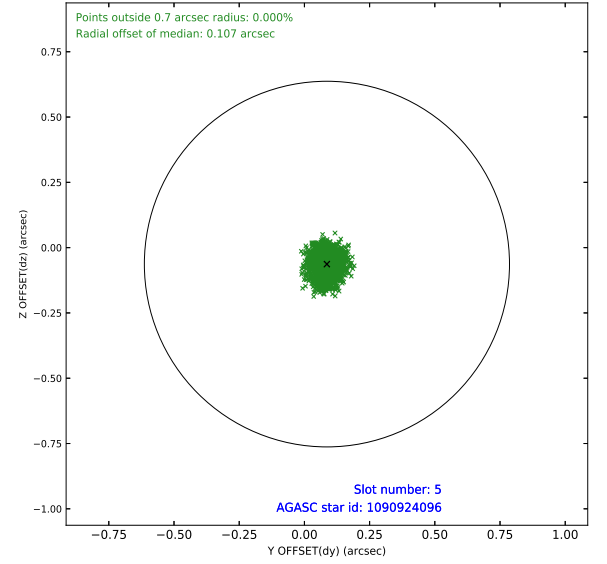
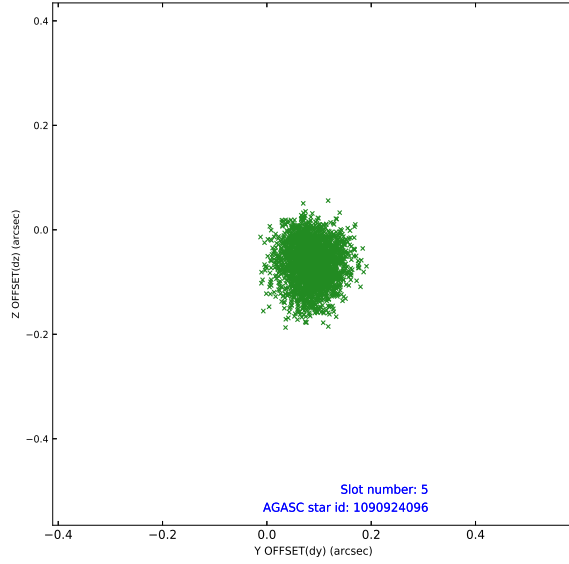
2.4.1 Slot 3



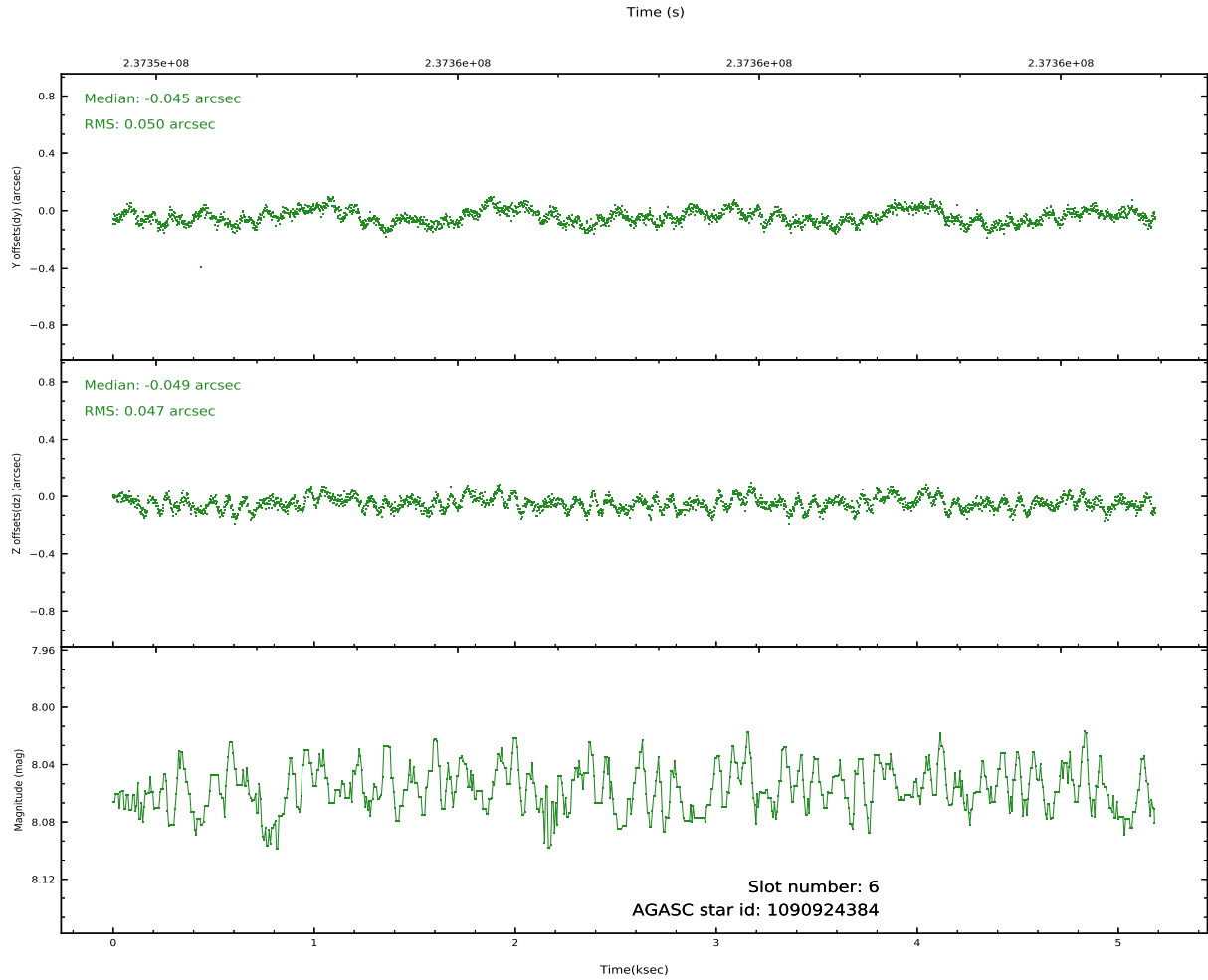
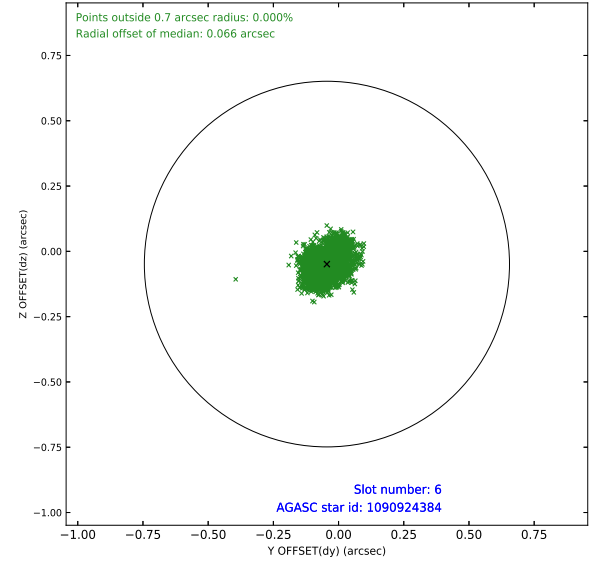
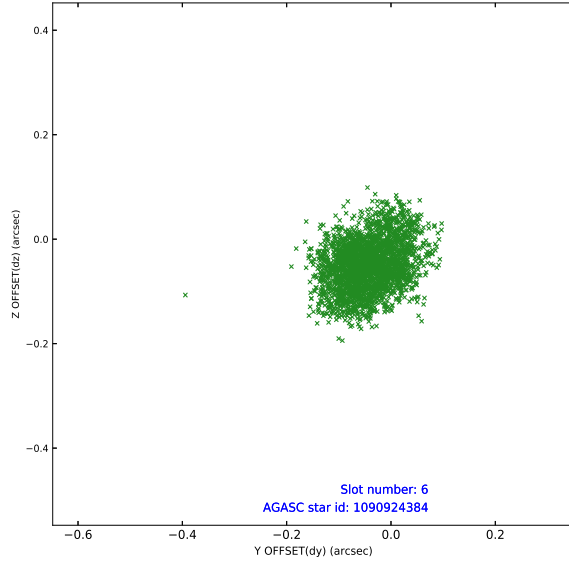
2.4.2 Slot 4



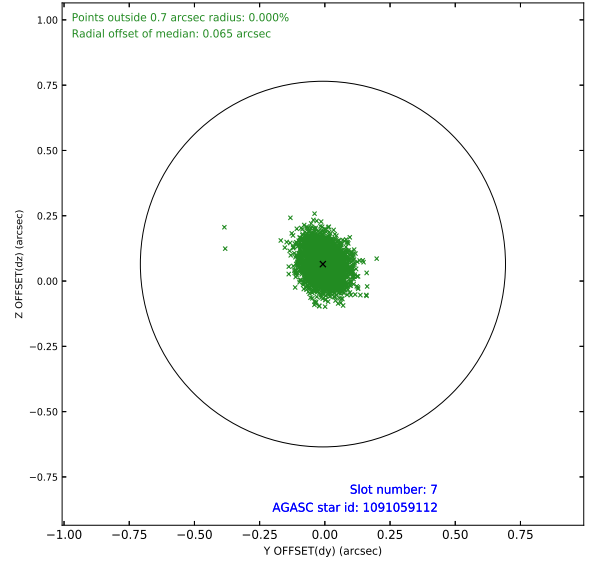
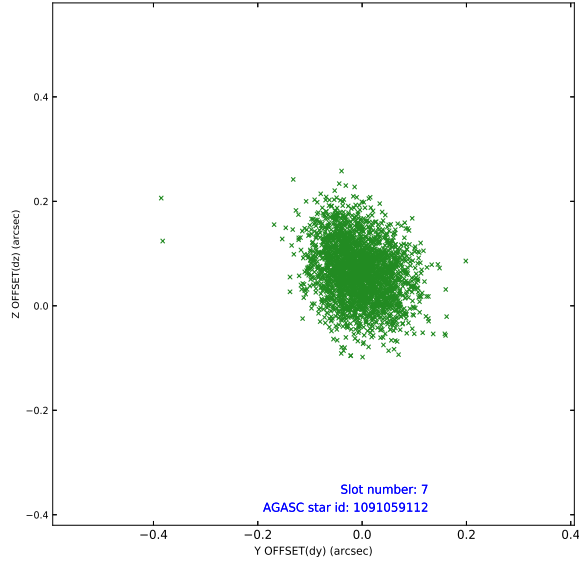
2.4.3 Slot 5



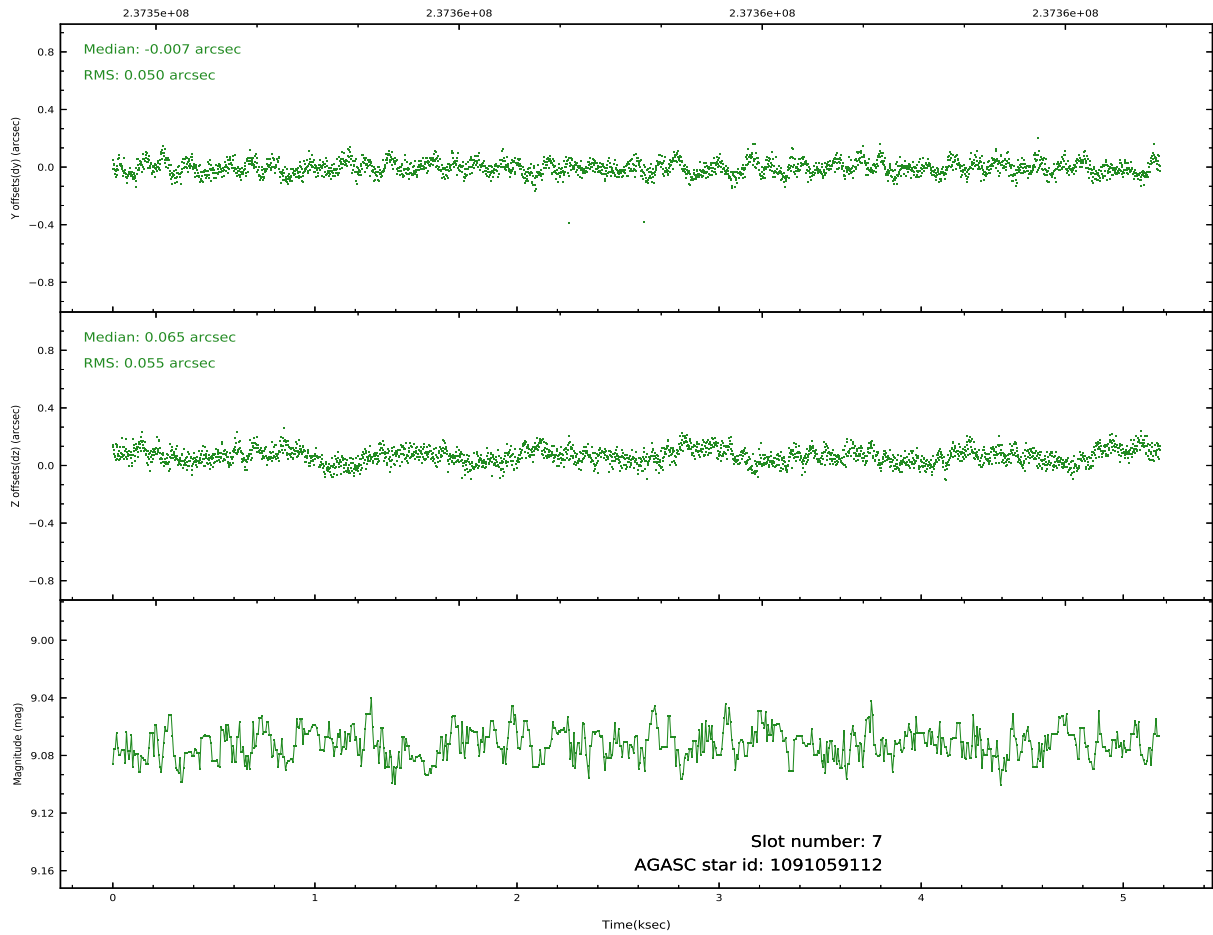
2.4.4 Slot 6



2.4.5 Slot 7

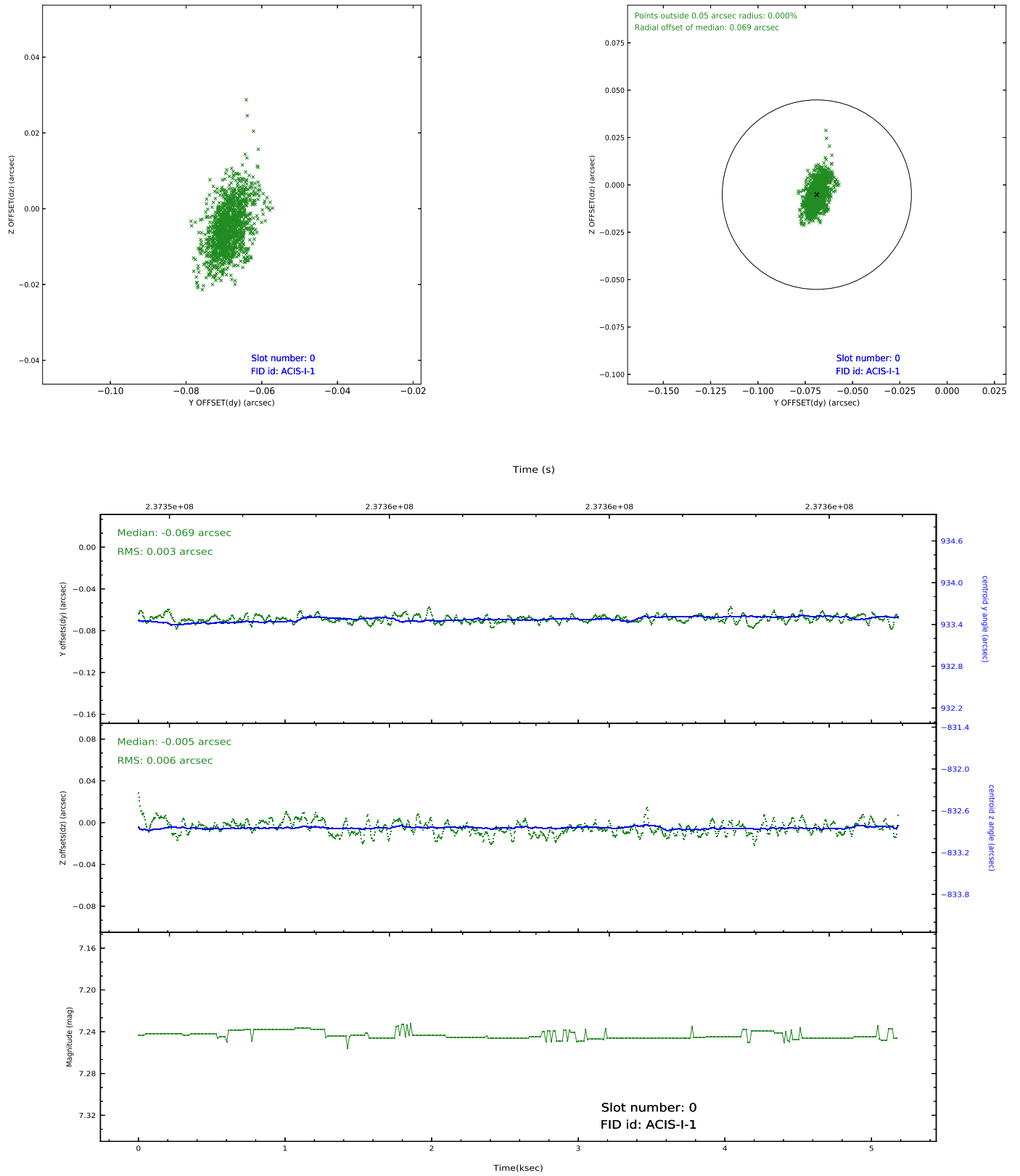


Time (s)

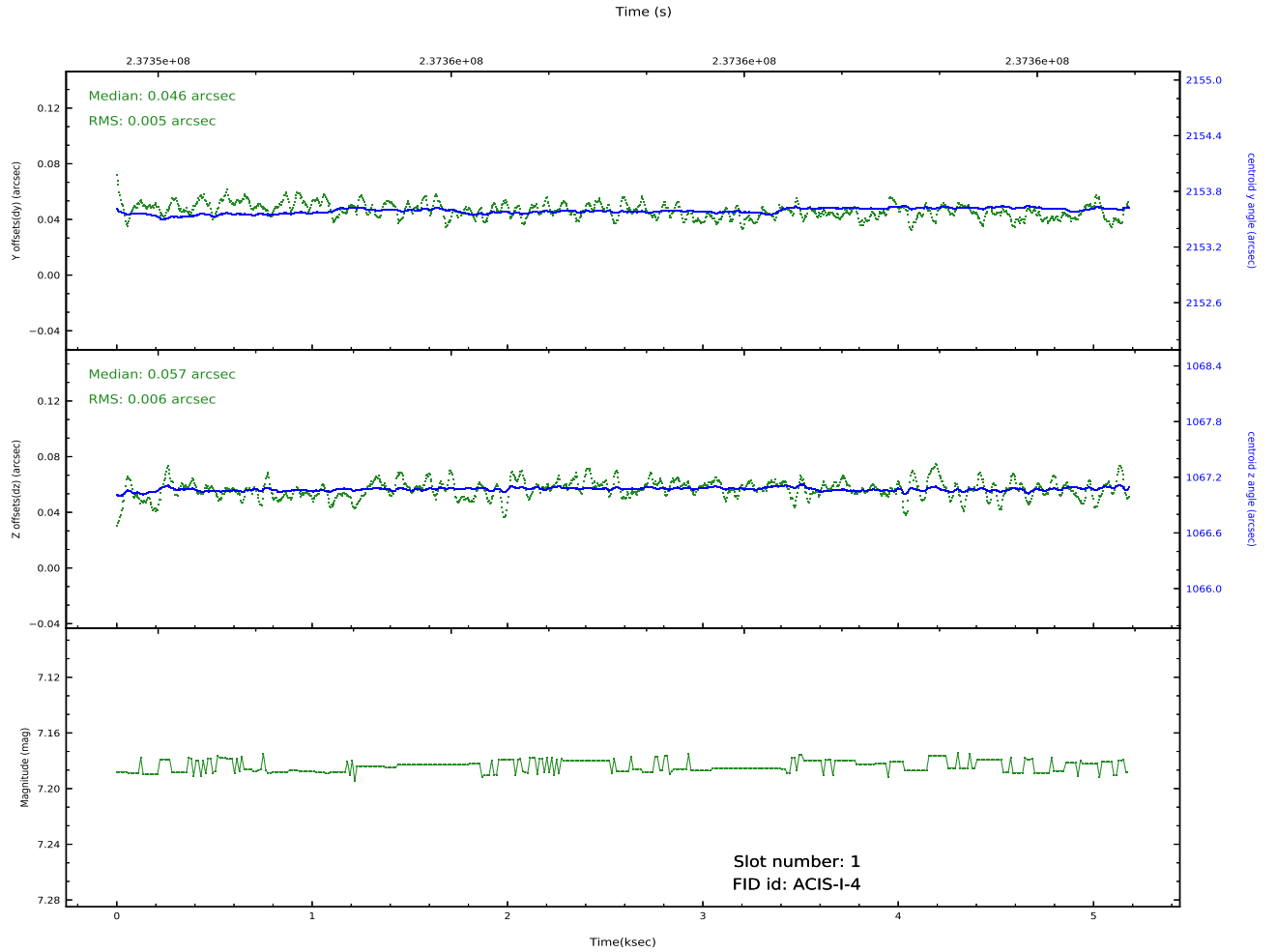
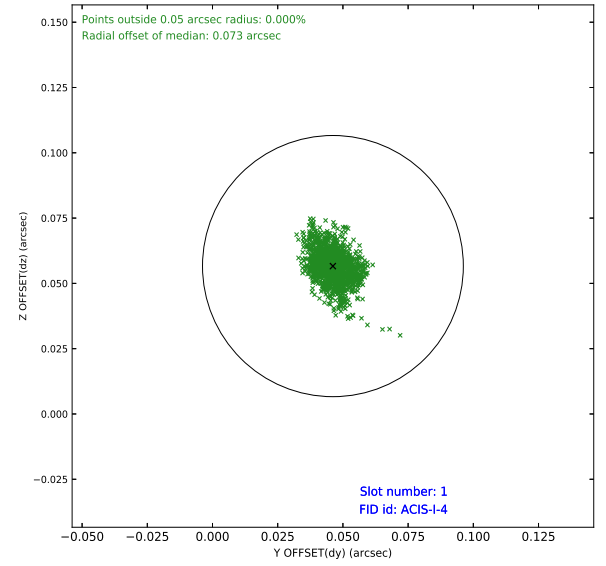
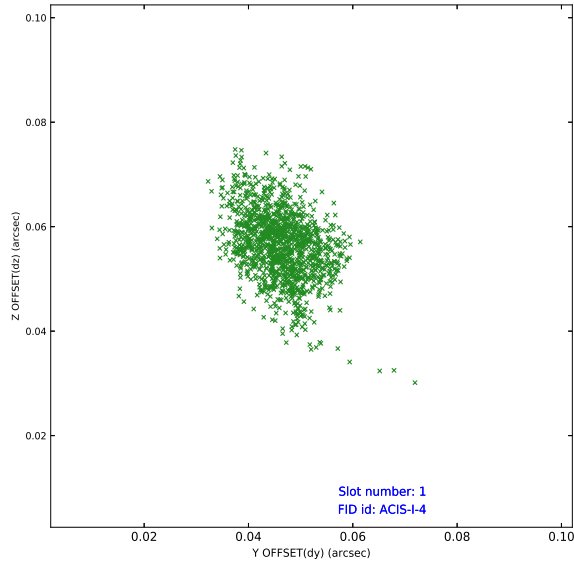


2.5 FID Slots

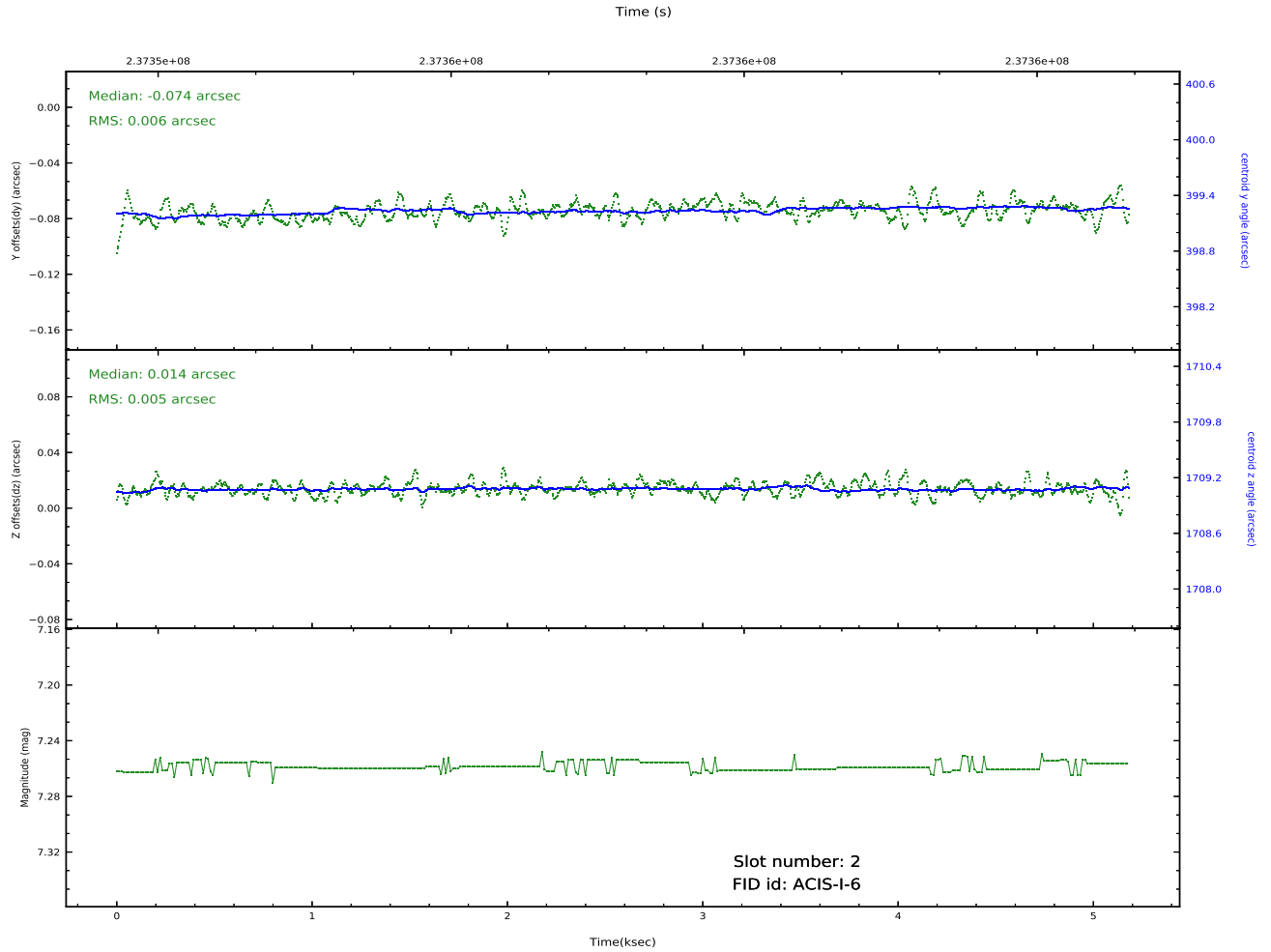
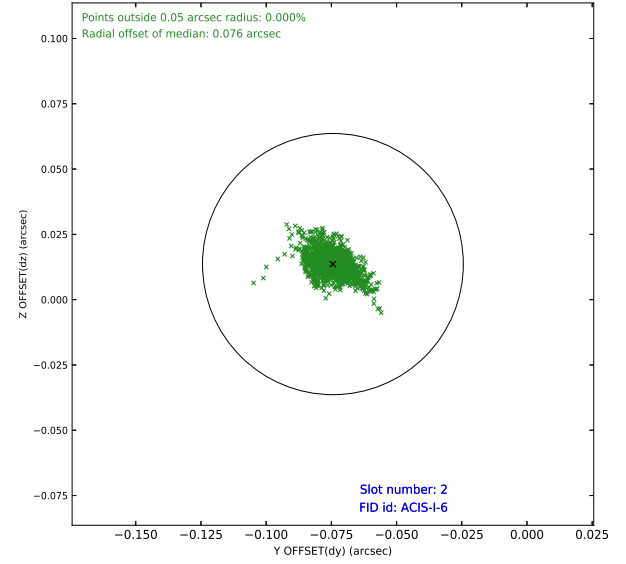
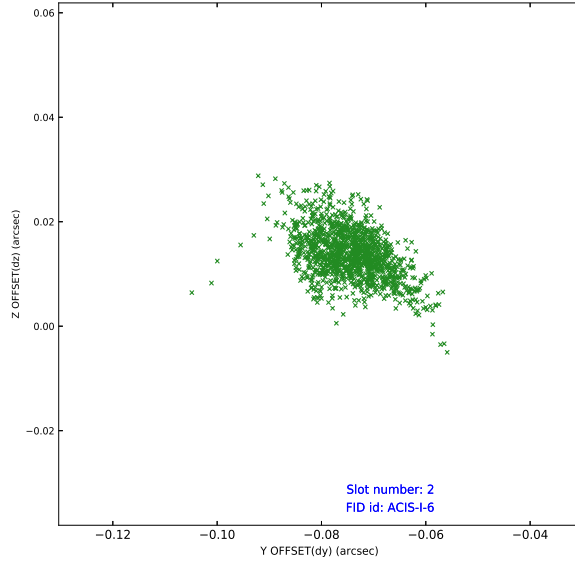
2.5.1 Slot 0



2.5.2 Slot 1



2.5.3 Slot 2



A Summary

A.1 Status

V&V Scientist	Jen Lauer
V&V Date (YYYY-MM-DD)	2020.10.09
V&V Edition	1
V&V Disposition and Status	OK
V&V Charge Time	5.1832

A.2 Comments