

# V&V Reference Report

## L2 ASCDS Version : 7.6.7.1

Observation 5594 - L2 Version 002  
Chandra X-Ray Center

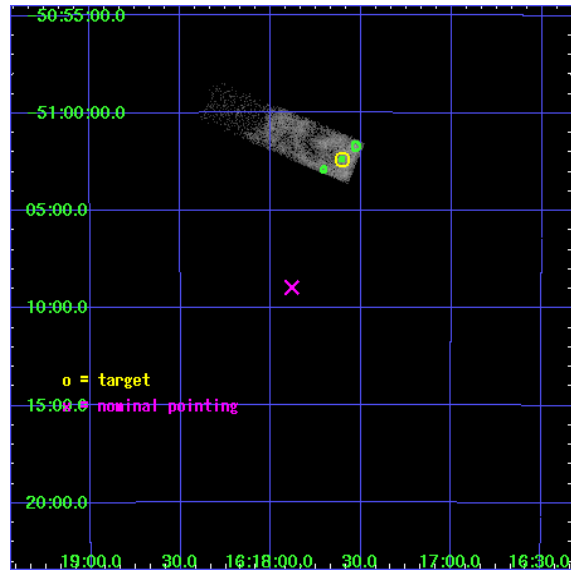
L2 Processing Date : Mar 14 2006

## Contents

<b>1</b>	<b>Front</b>	<b>2</b>
<b>2</b>	<b>OBI</b>	<b>3</b>
2.1	OBI . . . . .	3
2.1.1	Images . . . . .	3
2.1.2	Bias . . . . .	3
2.1.3	Parameters . . . . .	4
2.1.4	Events . . . . .	4
2.2	Compared Parameters . . . . .	5
2.3	Aspect . . . . .	6
2.4	Star Slots . . . . .	9
2.4.1	Slot 3 . . . . .	9
2.4.2	Slot 4 . . . . .	10
2.4.3	Slot 5 . . . . .	11
2.4.4	Slot 6 . . . . .	12
2.4.5	Slot 7 . . . . .	13
2.5	FID Slots . . . . .	14
2.5.1	Slot 0 . . . . .	14
2.5.2	Slot 1 . . . . .	15
2.5.3	Slot 2 . . . . .	16
<b>3</b>	<b>Point Sources</b>	<b>17</b>
<b>A</b>	<b>Summary</b>	<b>18</b>
A.1	Status . . . . .	18
A.2	Comments . . . . .	18

# 1 Front

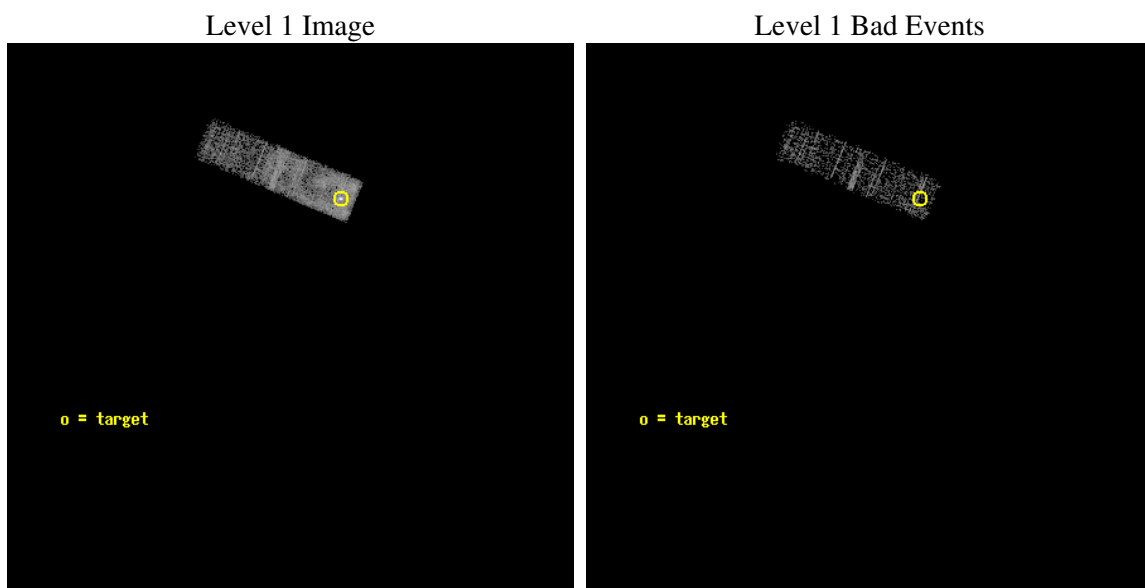
seq_num	500583
obs_id	5594
title	Monitoring of the Central Object in RCW103
observer	Prof. Gordon Garmire
object	RCW103
dtcycle	0
cycle	P
ra_targ	244.40125
dec_targ	-51.040278
ra_nom	244.47080075816
dec_nom	-51.149415019997
roll_nom	292.87019137831
revision	2
ontime	5183.2000772357
livetime	4930.2768736191
ontime3	5183.2000772357
l2events	11185



## 2 OBI

### 2.1 OBI

#### 2.1.1 Images



#### 2.1.2 Bias

Chip 3



### 2.1.3 Parameters

obi_num	0
ascdsver	7.6.7.1
caldbver	3.2.1
date	2006-03-14T11:44:15
revision	2

sched_exp_time	5000.000000
ontime	5211.8807884753
ontime3	5211.8807884753
l1events	20637

### 2.1.4 Events

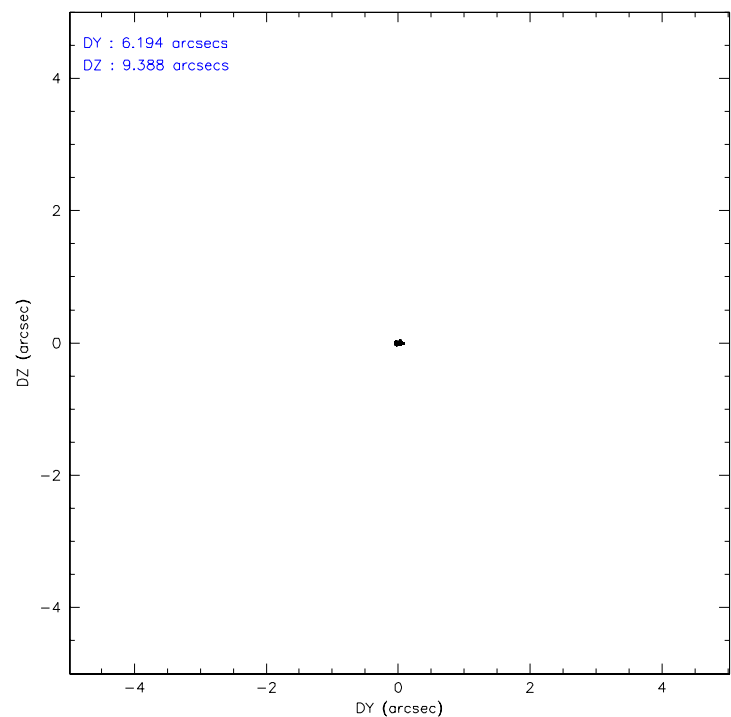
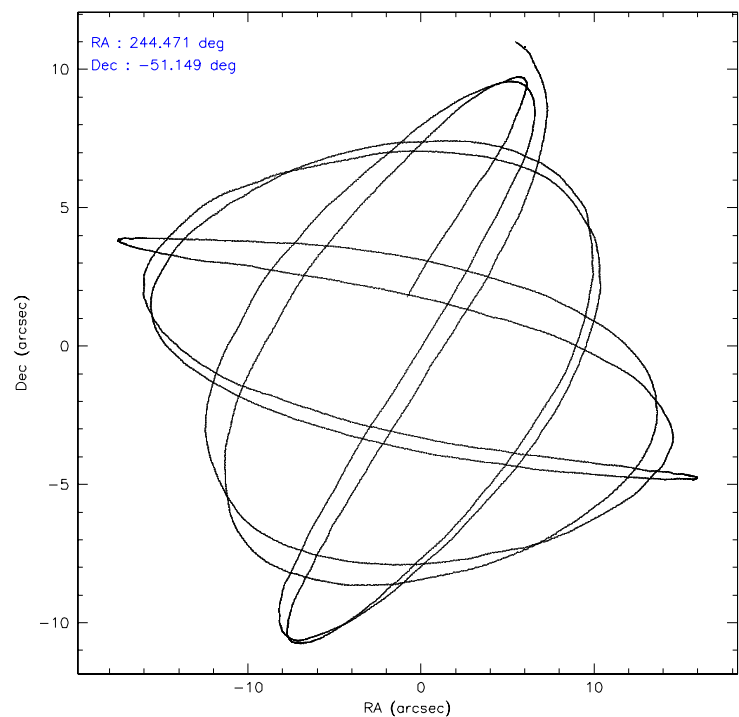
	<b>ccd 3</b>
level 1 events	20637
rejected events	9118
rejected %	44%

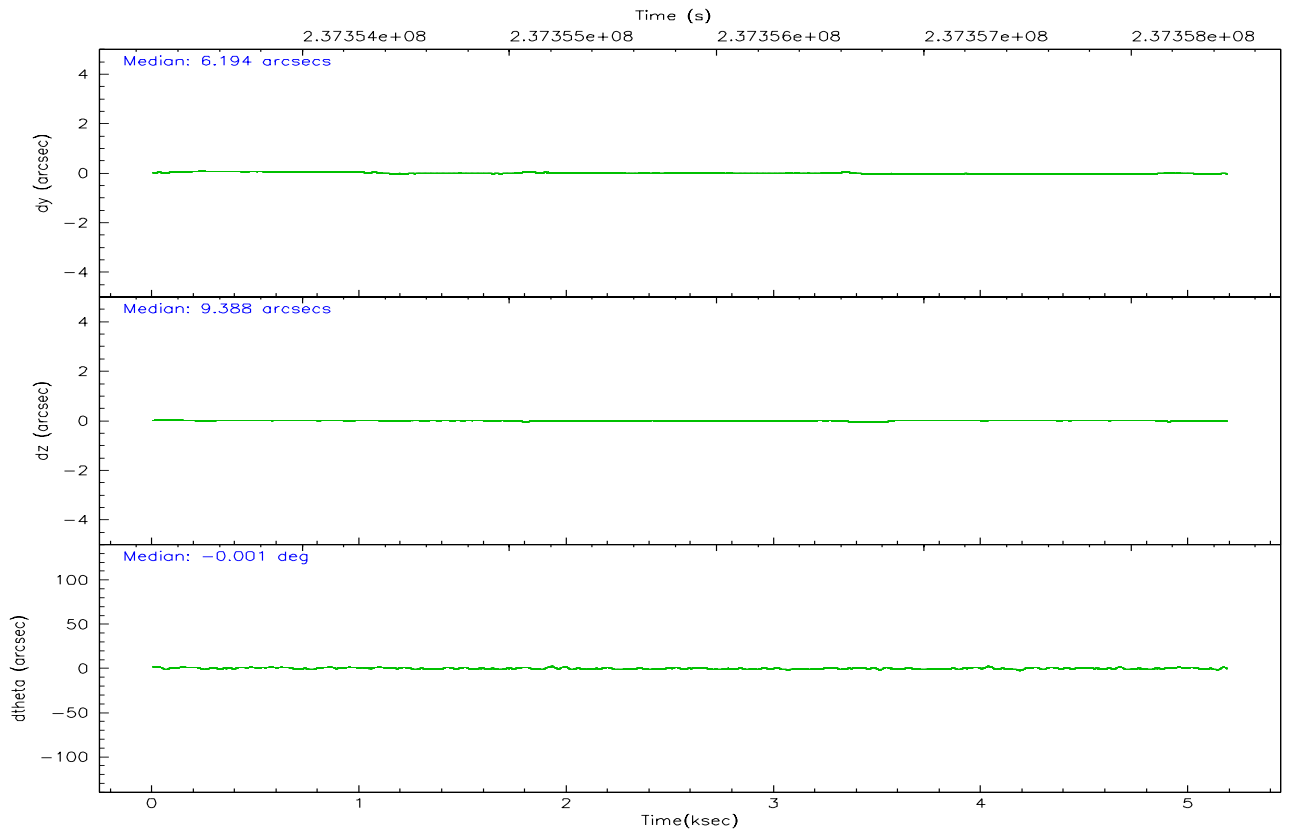
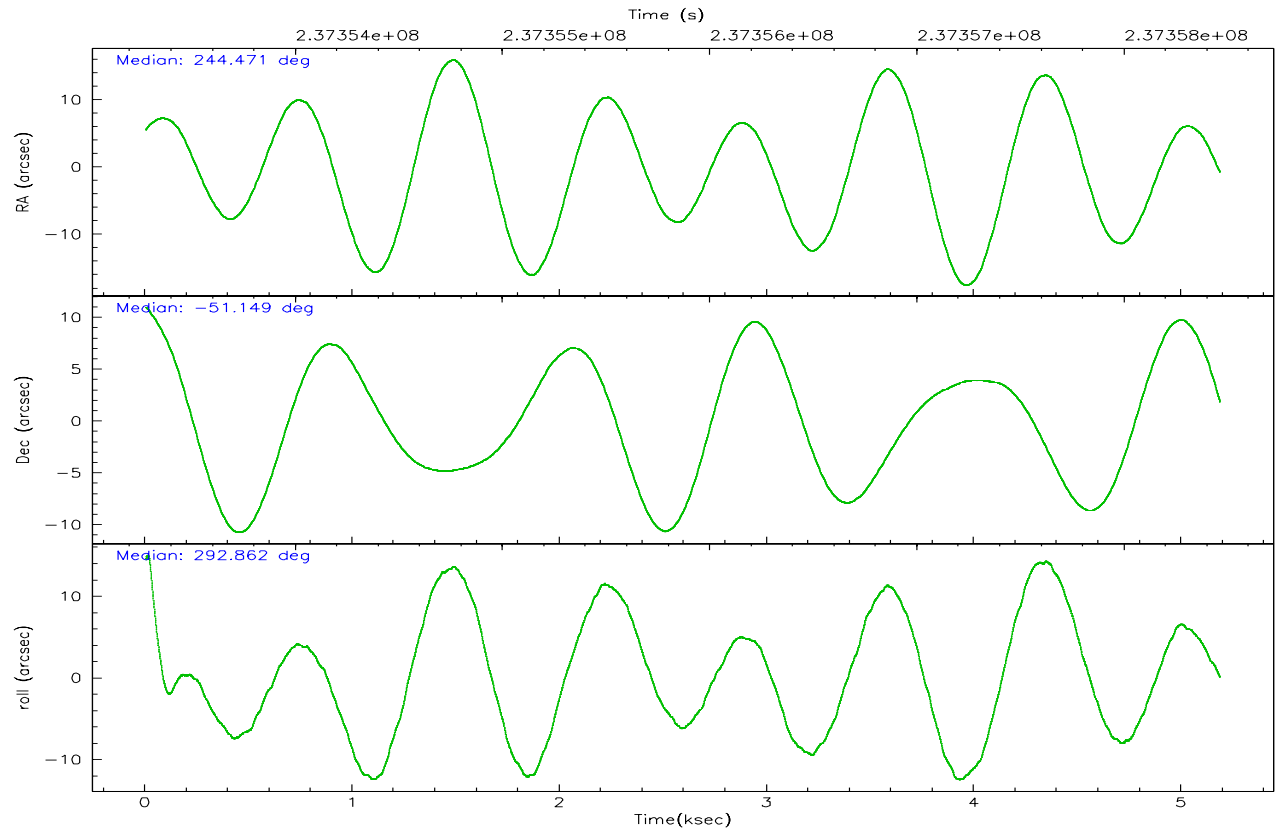
	<b>ccd 3</b>
grade 0 events	9428
	45%
grade 1 events	13
	0%
grade 2 events	1108
	5%
grade 3 events	425
	2%
grade 4 events	367
	1%
grade 5 events	156
	0%
grade 6 events	251
	1%
grade 7 events	8889
	43%

## 2.2 Compared Parameters

Parameter	Planned	Actual	Parameter	Planned	Actual
Instrument	ACIS	ACIS	Obspar format version number	6	6
Detector	ACIS-3	ACIS-3	Obspar file type	PREDICTED	ACTUAL
Grating	NONE	NONE	Obspar update status	NONE	UPDATED
Data mode	VFAINT	VFAINT	On-chip summing requested	N	N
Observation mode	POINTING	POINTING	Subarray requested	CUSTOM	1/4
Pointing RA	244.435790	244.4708007581572	Subarray start row	1	1
Pointing Dec	-51.133067	-51.1494150199967	Subarray row count	256	256
Pointing Roll	292.634234	292.8701913783054	Alternating exposures requested	N	N
SIM focus pos (mm)	-0.782348	-0.7809083437167272	Primary exposure time	0.000000	0.8
SIM defocus (mm)	0	0.001439871863259334			
SIM translation stage pos (mm)	-233.592463	-233.5874344608287			
SIM translation stage offset (mm)	0	-0.005018542100998502			
Observation start time	237353471.184000	237352819.73308			
Observation start date	2005-07-10T03:30:07	2005-07-10T03:20:19			
Observation end time	237358471.184000	237359397.67088			
Observation end date	2005-07-10T04:53:27	2005-07-10T05:09:57			
Read mode	TIMED	TIMED			

2.3 Aspect





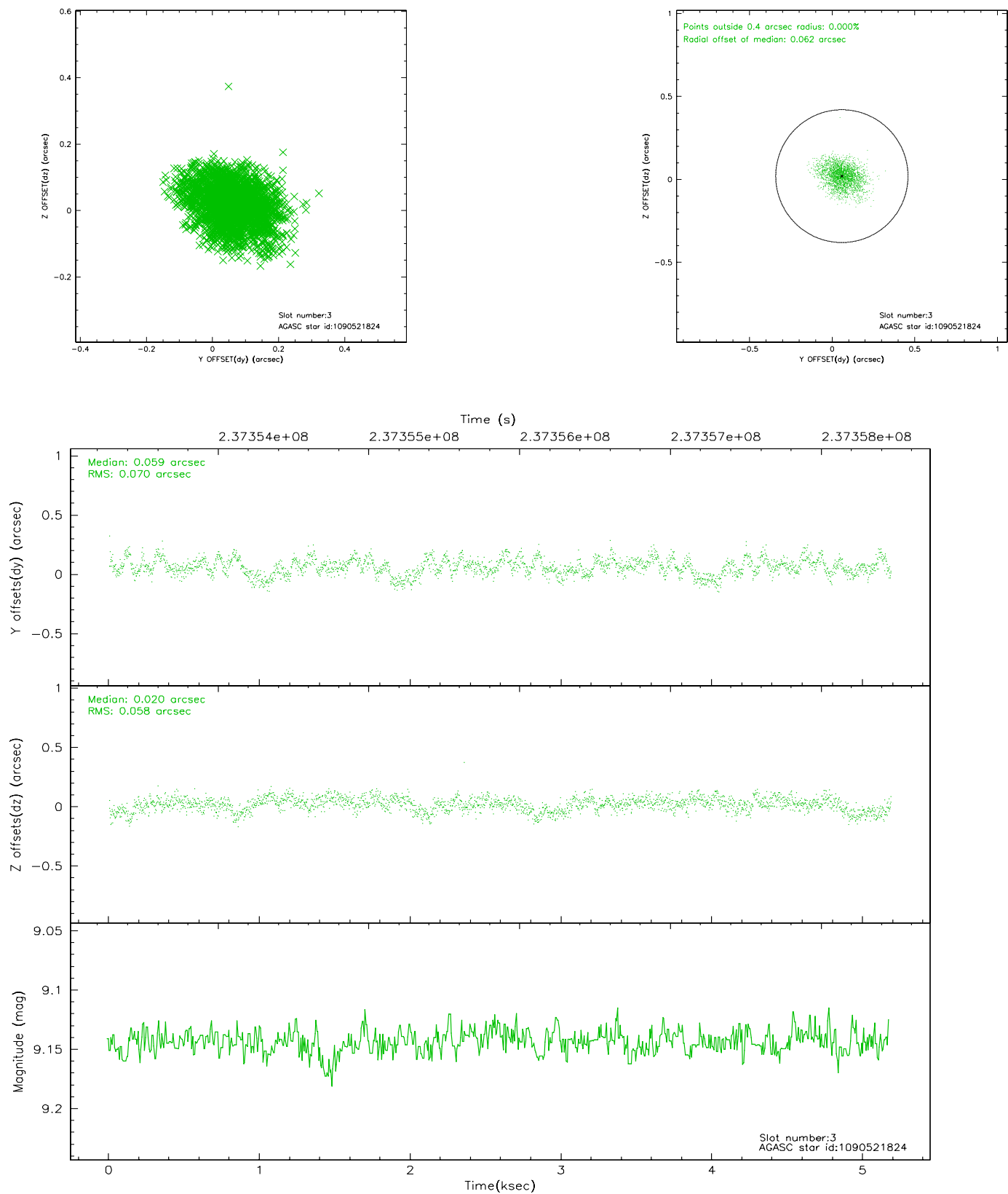
### Slot Statistics

slot	status	id	mag	n_pts	med_dy	med_dz	dr1	dr2	ra	dec	mean_y	mean_z
0	FID	ACIS-I-1	7.25	1265	-0.049	0.061	0.007	0.013	0.000000	0.000000	933.44	-832.80
1	FID	ACIS-I-4	7.18	1265	0.007	0.022	0.008	0.014	0.000000	0.000000	2154.24	1066.35
2	FID	ACIS-I-6	7.26	1265	-0.056	-0.018	0.008	0.014	0.000000	0.000000	400.91	1709.87
3	GUIDE	1090521824	9.14	2529	0.059	0.020	0.098	0.159	244.711253	-50.470098	-1958.64	1500.49
4	GUIDE	1090921440	8.93	2529	-0.021	-0.009	0.070	0.110	243.292741	-50.752608	-2247.60	-1883.34
5	GUIDE	1090924096	8.06	2530	0.069	-0.022	0.057	0.090	243.849549	-51.016855	-892.49	-1067.28
6	GUIDE	1090924384	8.06	2530	-0.043	0.005	0.074	0.118	243.330505	-50.934017	-1608.85	-2046.74
7	GUIDE	1091059112	9.07	2528	-0.071	0.012	0.079	0.128	245.180420	-50.736664	-656.92	2110.86

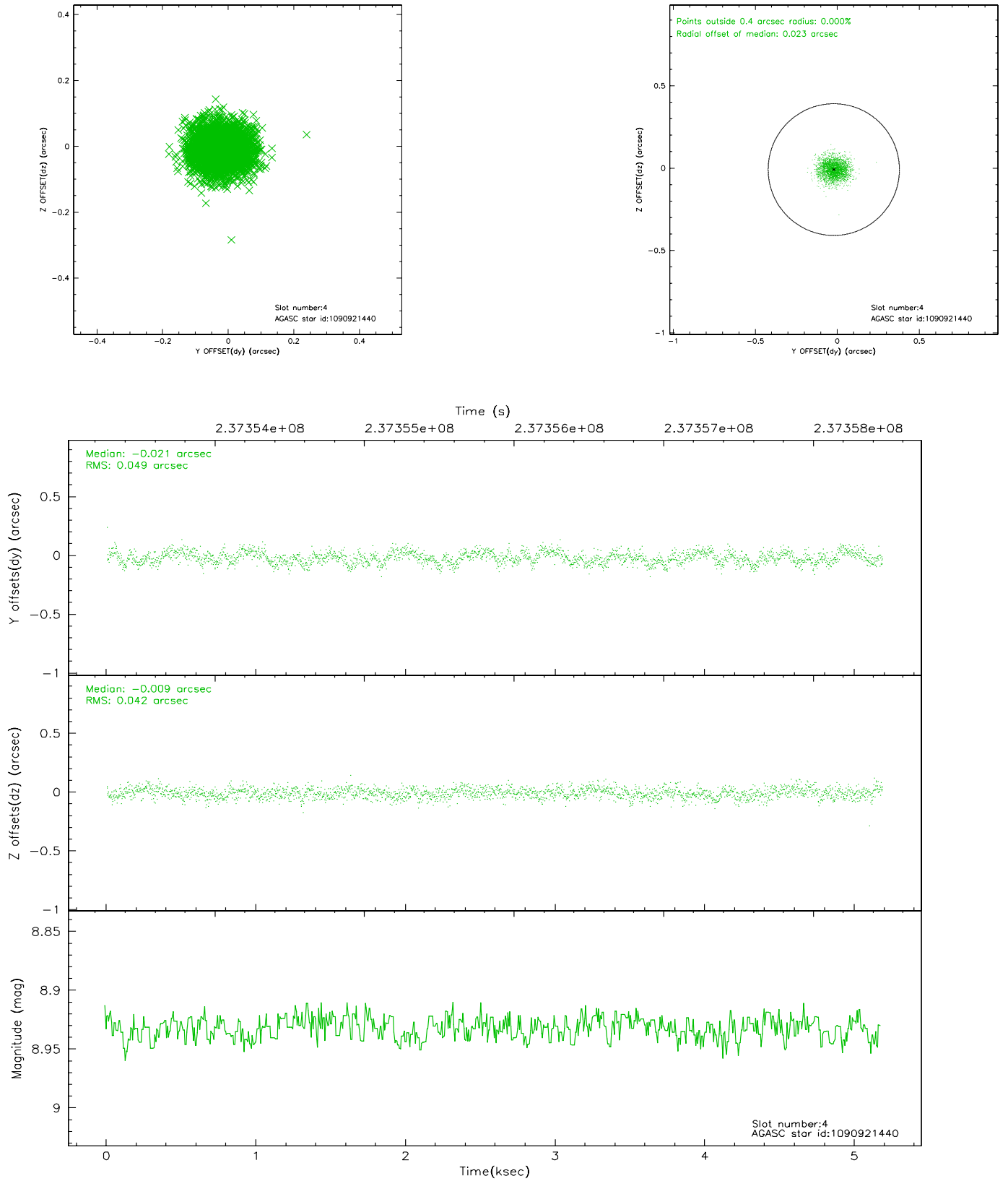


## 2.4 Star Slots

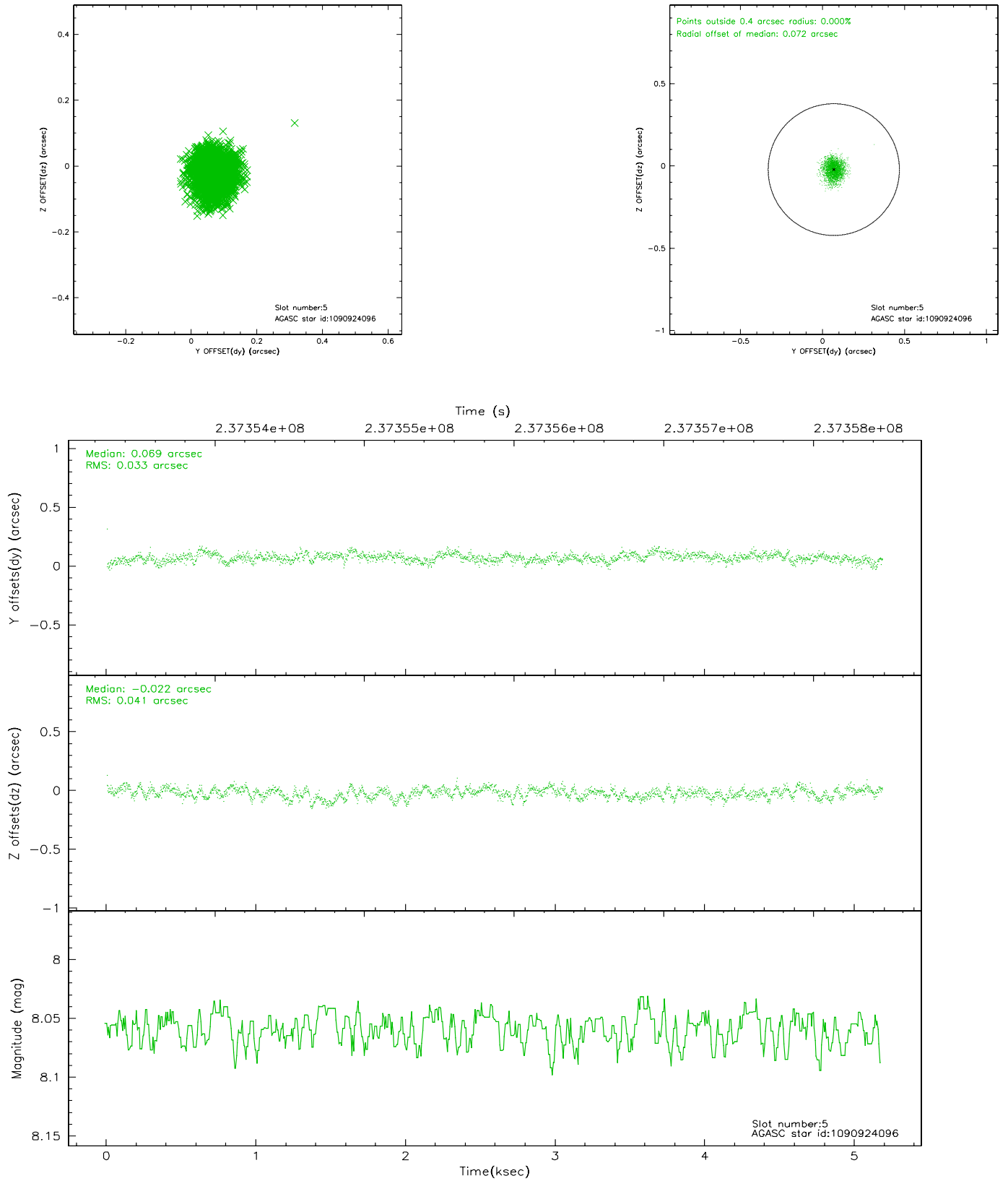
### 2.4.1 Slot 3



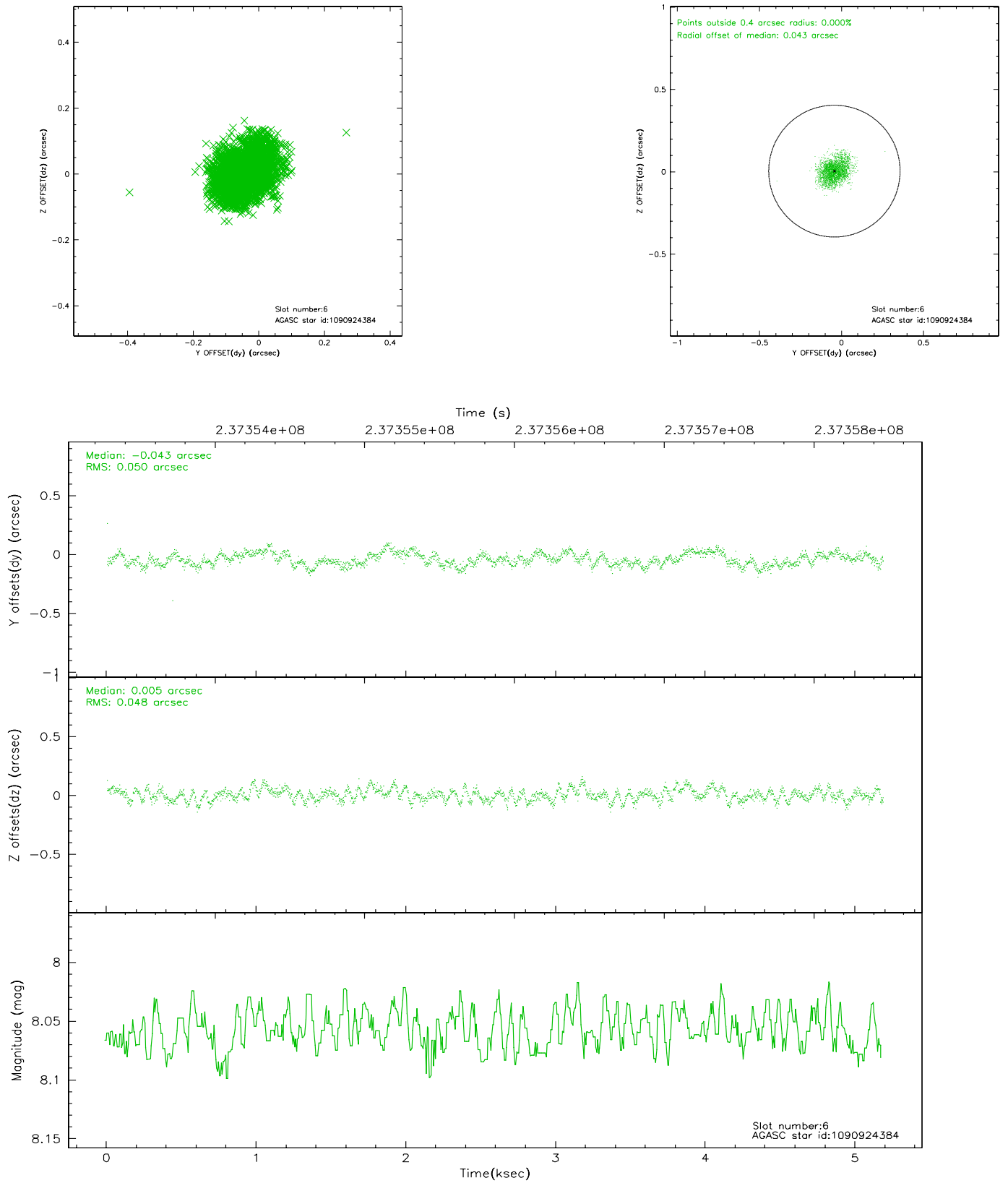
## 2.4.2 Slot 4



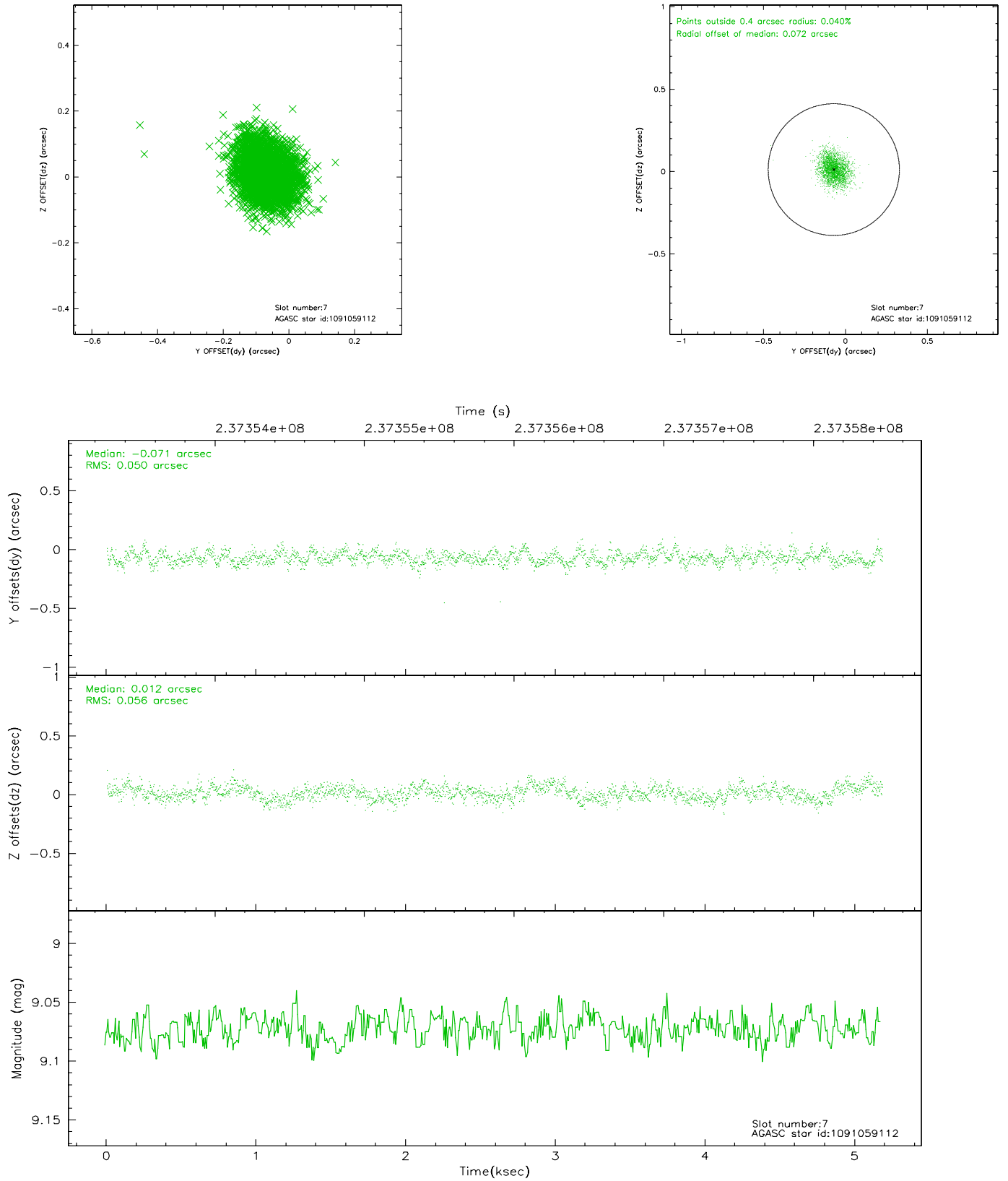
### 2.4.3 Slot 5



## 2.4.4 Slot 6

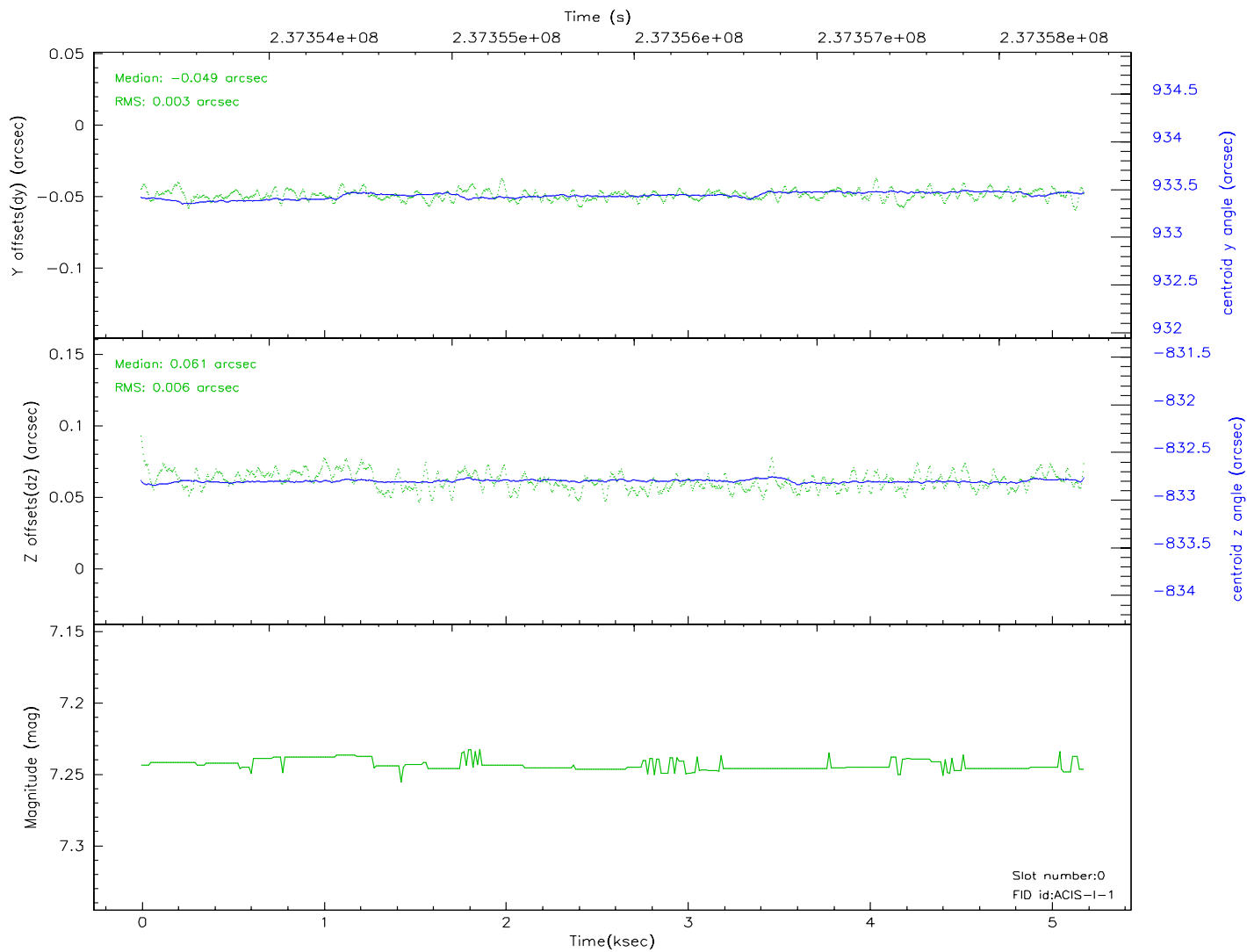
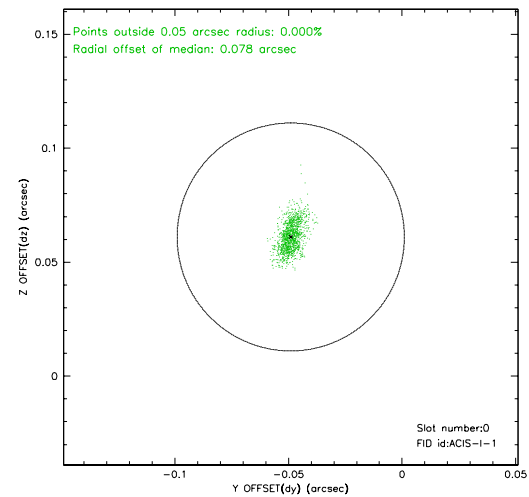
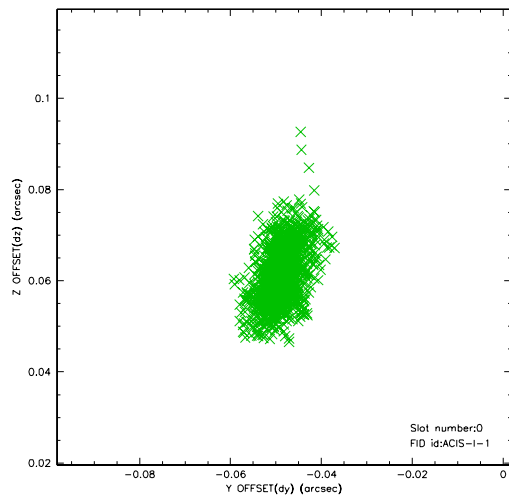


## 2.4.5 Slot 7

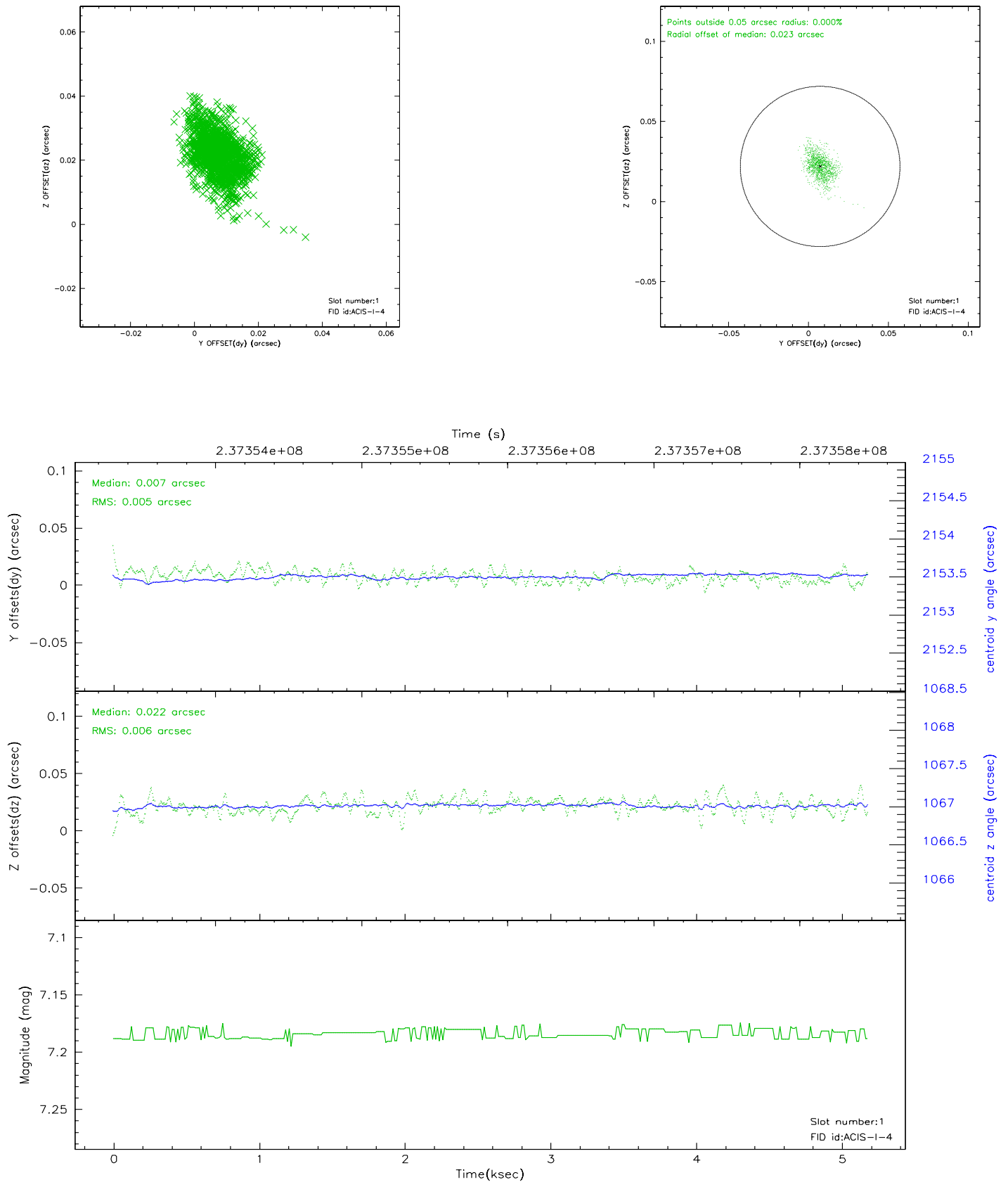


## 2.5 FID Slots

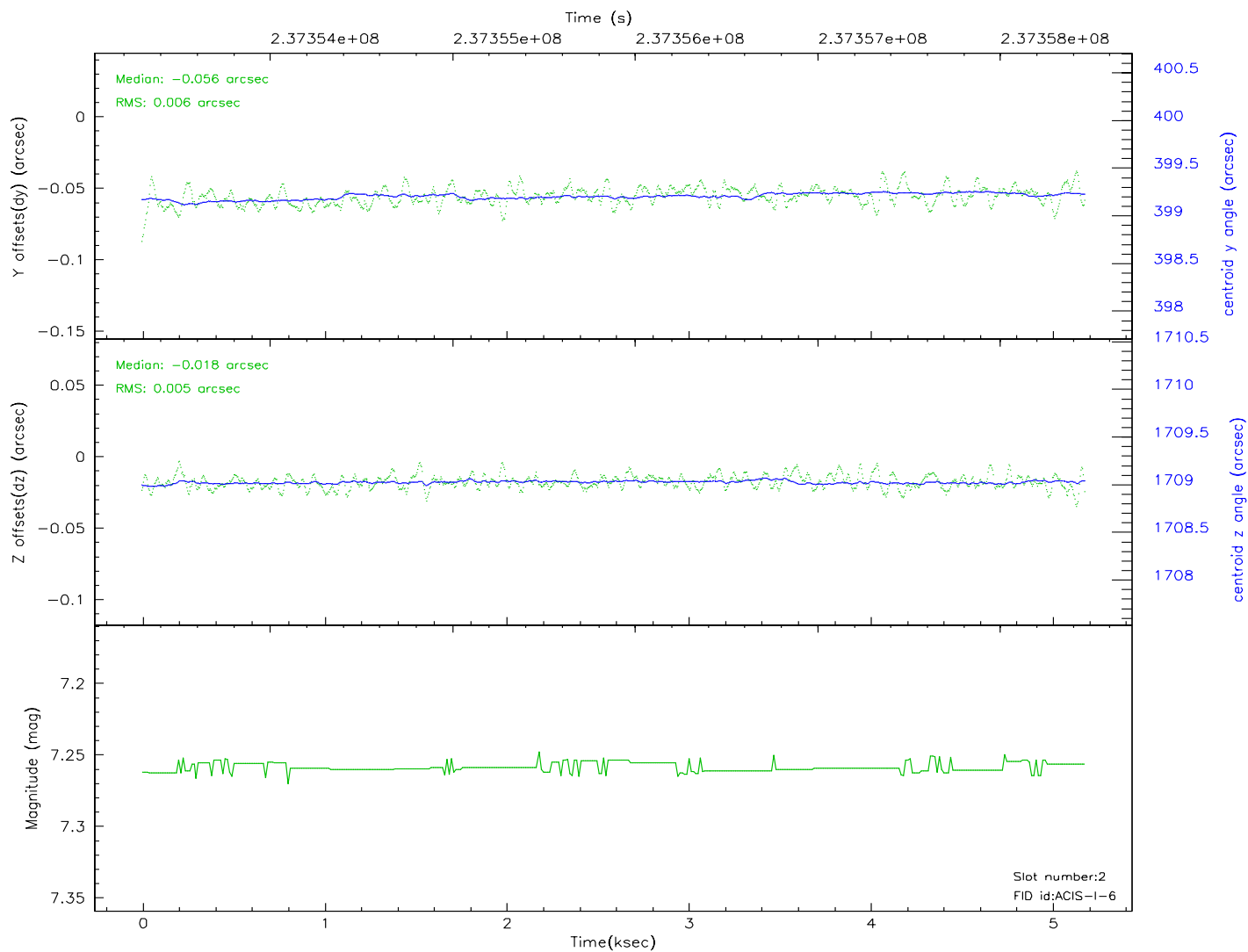
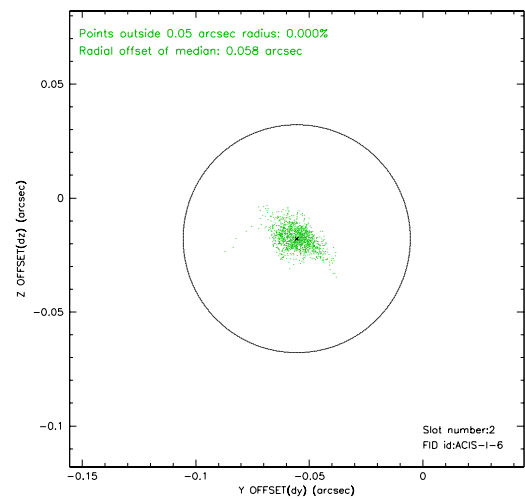
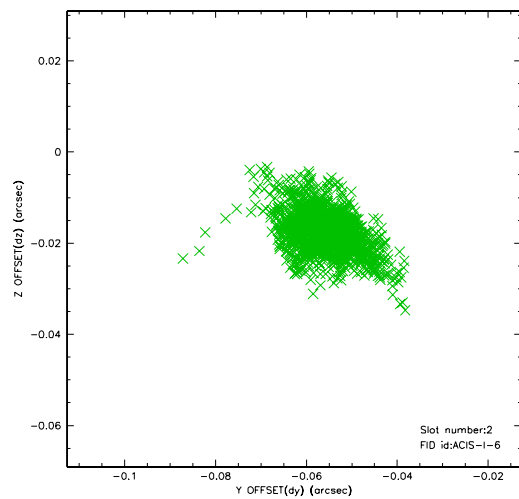
### 2.5.1 Slot 0



## 2.5.2 Slot 1



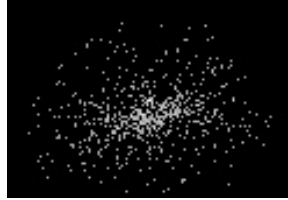
### 2.5.3 Slot 2





### 3 Point Sources

7.06 arcmin



## A Summary

### A.1 Status

V&V Scientist	Beth Sundheim
V&V Date (YYYY-MM-DD)	2006.03.14
V&V Edition	1
V&V Disposition and Status	OK
V&V Charge Time	5.1832

### A.2 Comments