

V&V Reference Report

L2 ASCDS Version : 7.6.7

Observation 5593 - L2 Version 002
Chandra X-Ray Center

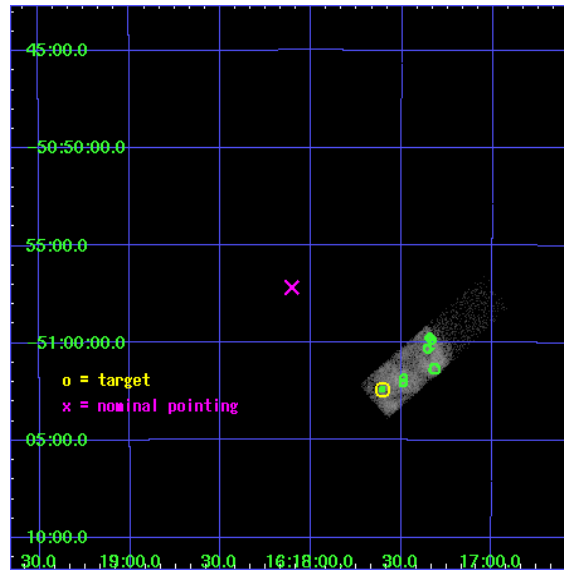
L2 Processing Date: Mar 2 2006

Contents

1	Front	2
2	OBI	3
2.1	OBI	3
2.1.1	Images	3
2.1.2	Bias	3
2.1.3	Parameters	4
2.1.4	Events	4
2.2	Compared Parameters	5
2.3	Aspect	6
2.4	Star Slots	9
2.4.1	Slot 3	9
2.4.2	Slot 4	10
2.4.3	Slot 5	11
2.4.4	Slot 6	12
2.4.5	Slot 7	13
2.5	FID Slots	14
2.5.1	Slot 0	14
2.5.2	Slot 1	15
2.5.3	Slot 2	16
3	Point Sources	17
A	Summary	18
A.1	Status	18
A.2	Comments	18

1 Front

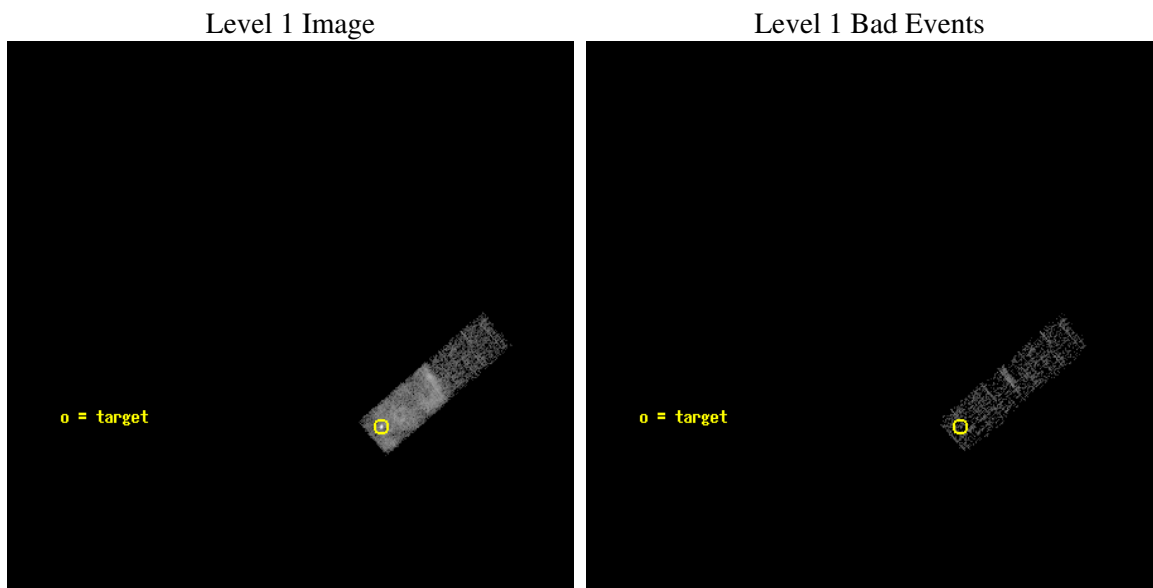
seq_num	500582
obs_id	5593
title	Monitoring of the Central Object in RCW103
observer	Prof. Gordon Garmire
object	RCW103
dtcycle	0
cycle	P
ra_targ	244.40125
dec_targ	-51.040278
ra_nom	244.52649321479
dec_nom	-50.952898813537
roll_nom	49.094560330275
revision	2
ontime	5184.7590571642
livetime	4931.7597804282
ontime3	5184.7590571642
l2events	16767



2 OBI

2.1 OBI

2.1.1 Images



2.1.2 Bias

Chip 3



2.1.3 Parameters

obi_num	1
ascdsver	7.6.7
caldbver	3.2.1
date	2006-03-02T05:13:17
revision	2

sched_exp_time	5000.000000
ontime	5224.4905875325
ontime3	5224.4905875325
l1events	26008

2.1.4 Events

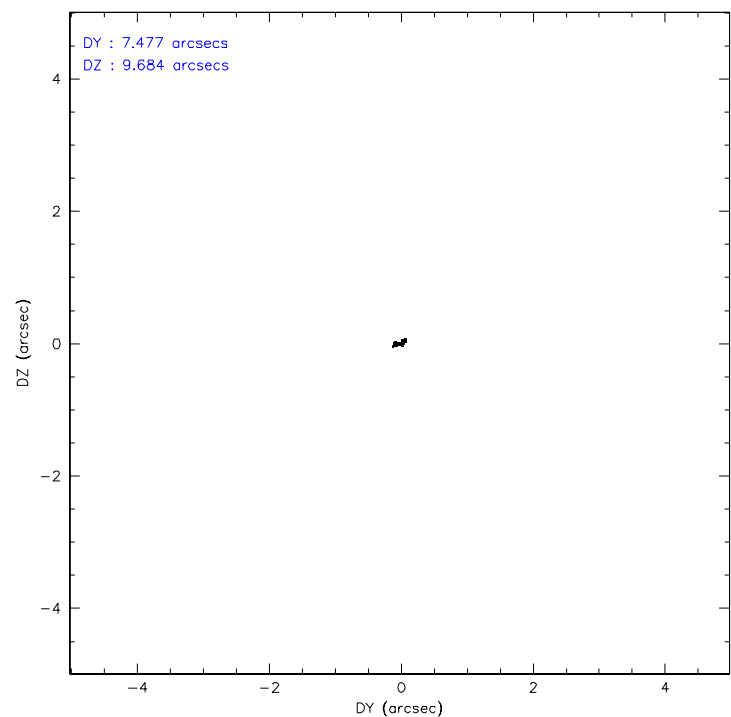
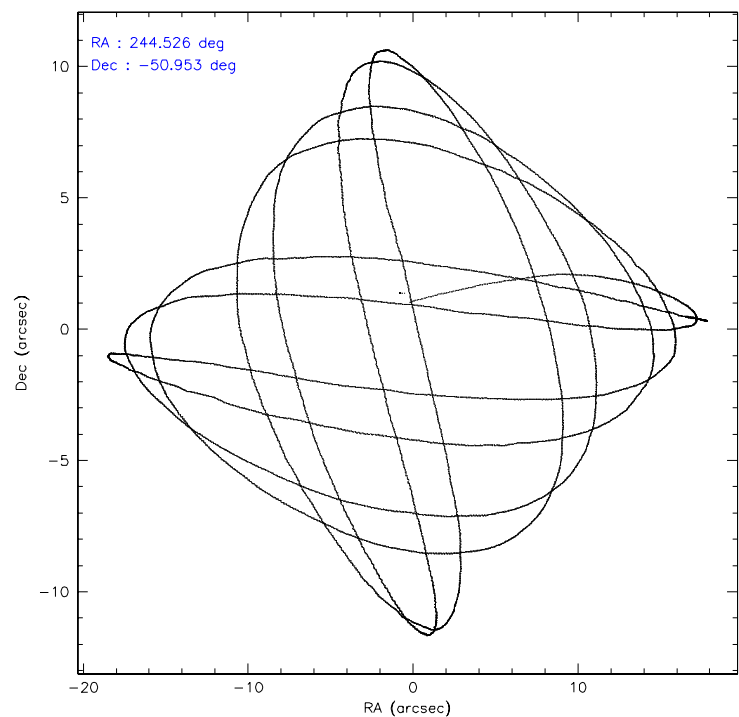
	ccd 3
level 1 events	26008
rejected events	8650
rejected %	33%

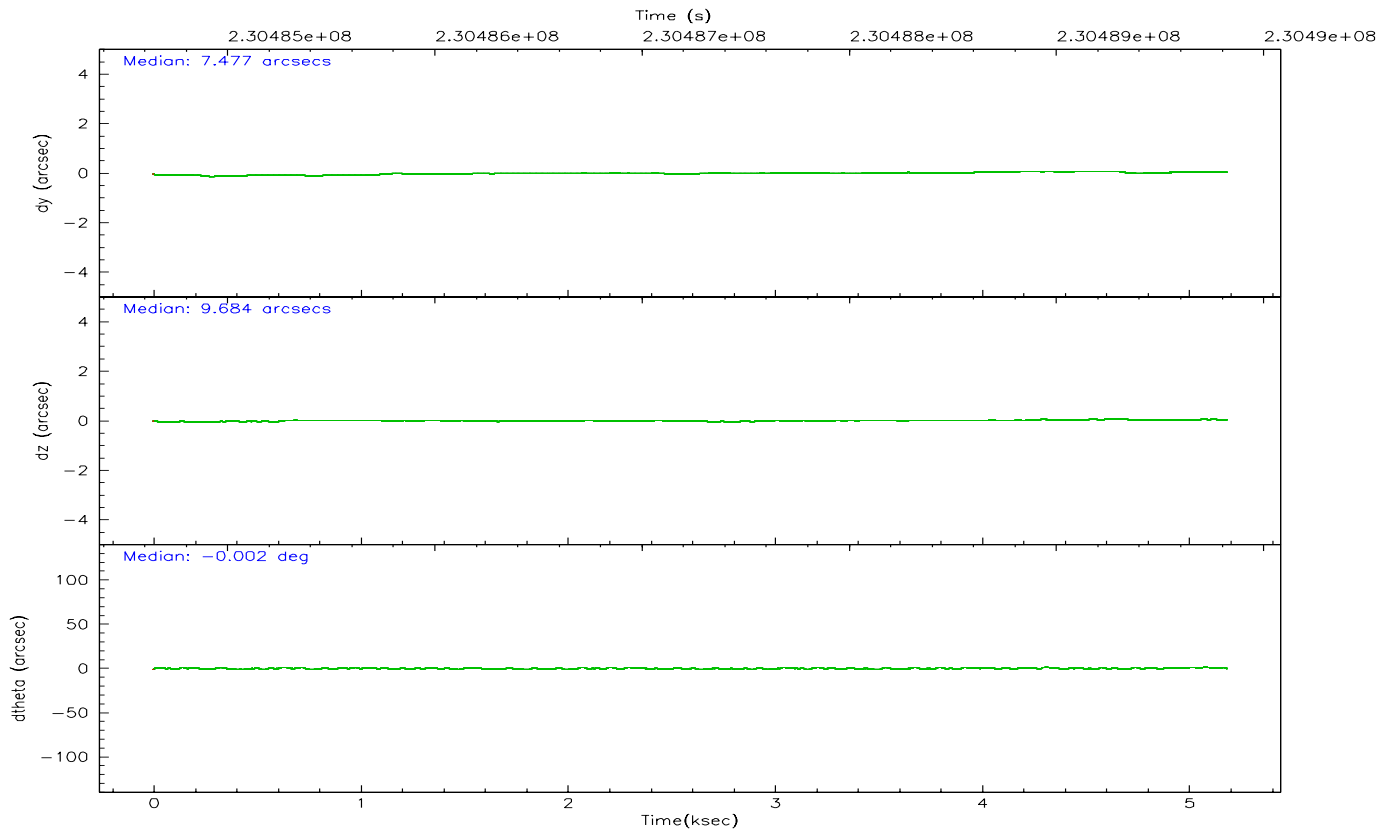
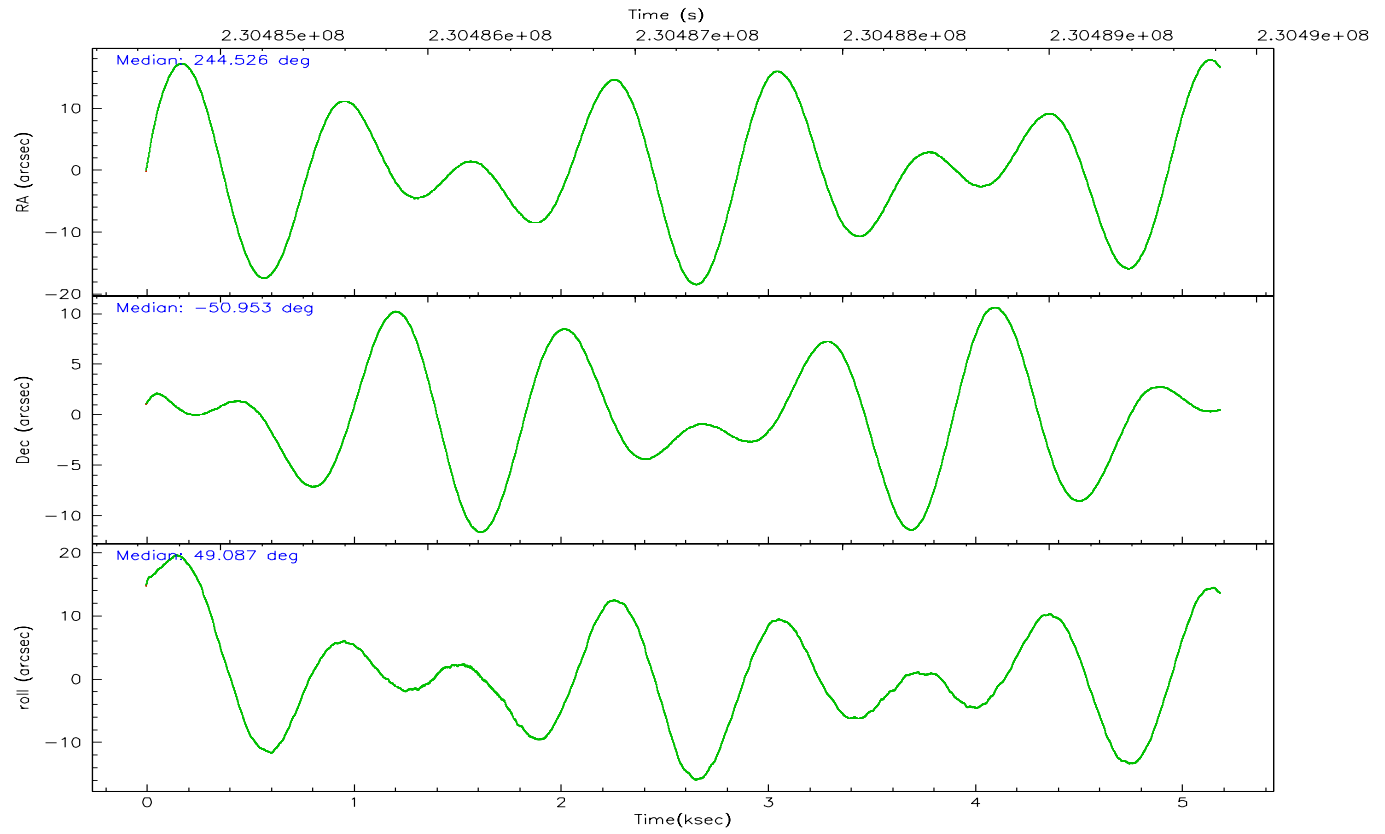
	ccd 3
grade 0 events	14639
	56%
grade 1 events	15
	0%
grade 2 events	1519
	5%
grade 3 events	537
	2%
grade 4 events	522
	2%
grade 5 events	163
	0%
grade 6 events	290
	1%
grade 7 events	8323
	32%

2.2 Compared Parameters

Parameter	Planned	Actual	Parameter	Planned	Actual
Instrument	ACIS	ACIS	Obspar format version number	6	6
Detector	ACIS-3	ACIS-3	Obspar file type	PREDICTED	ACTUAL
Grating	NONE	NONE	Obspar update status	NONE	UPDATED
Data mode	VFAINT	VFAINT	On-chip summing requested	N	N
Observation mode	POINTING	POINTING	Subarray requested	CUSTOM	1/4
Pointing RA	244.518340	244.5264932147942	Subarray start row	1	1
Pointing Dec	-50.979833	-50.95289881353725	Subarray row count	256	256
Pointing Roll	48.879525	49.09456033027516	Alternating exposures requested	N	N
SIM focus pos (mm)	-0.782348	-0.7809083437167272	Primary exposure time	0.000000	0.8
SIM defocus (mm)	0	0.001439871863259334			
SIM translation stage pos (mm)	-233.592463	-233.5874344608287			
SIM translation stage offset (mm)	0	-0.005018542100998502			
Observation start time	230484822.184000	230484164.24481			
Observation start date	2005-04-21T15:32:38	2005-04-21T15:22:44			
Observation end time	230489822.184000	230490275.80759			
Observation end date	2005-04-21T16:55:58	2005-04-21T17:04:35			
Read mode	TIMED	TIMED			

2.3 Aspect



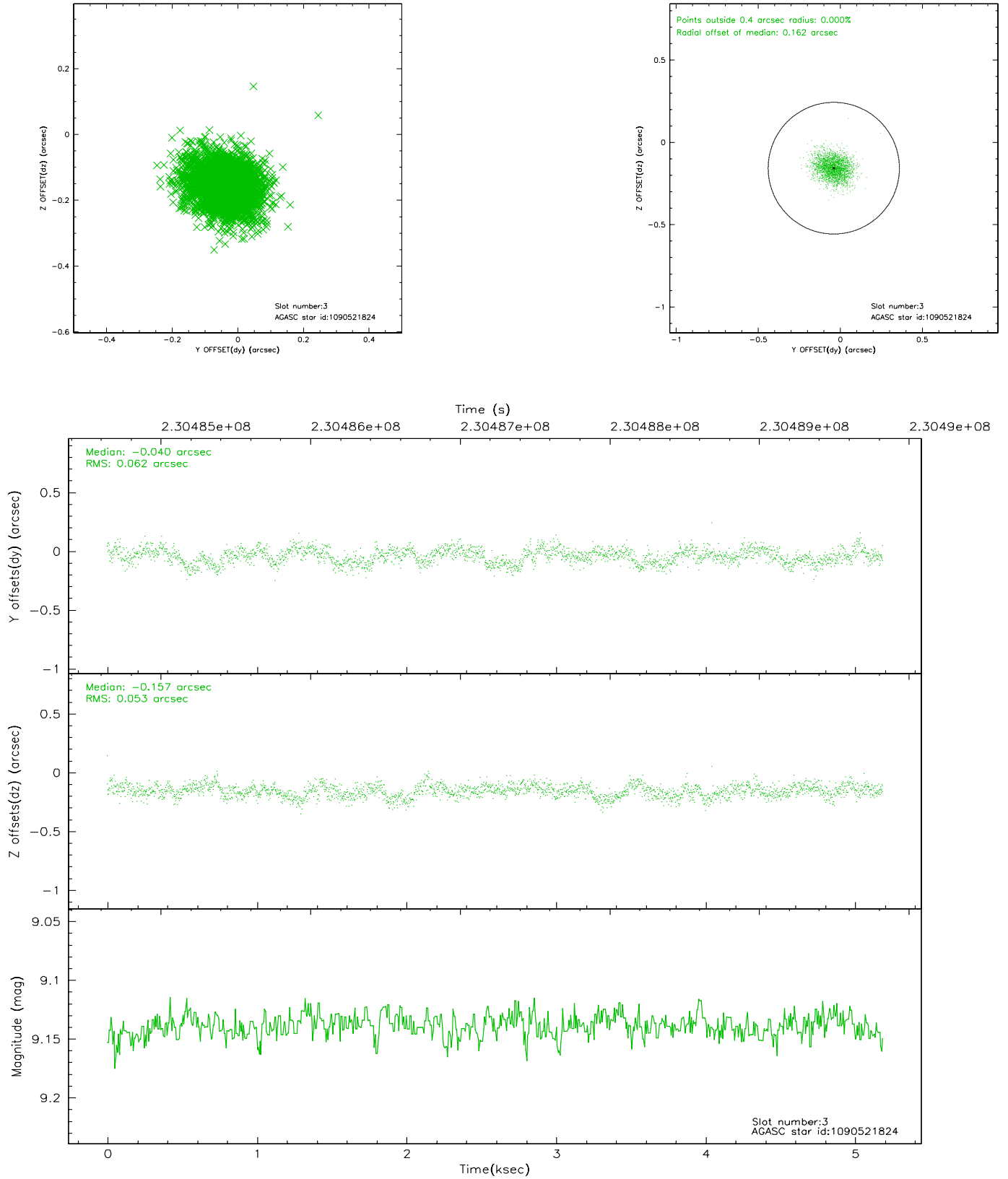


Slot Statistics

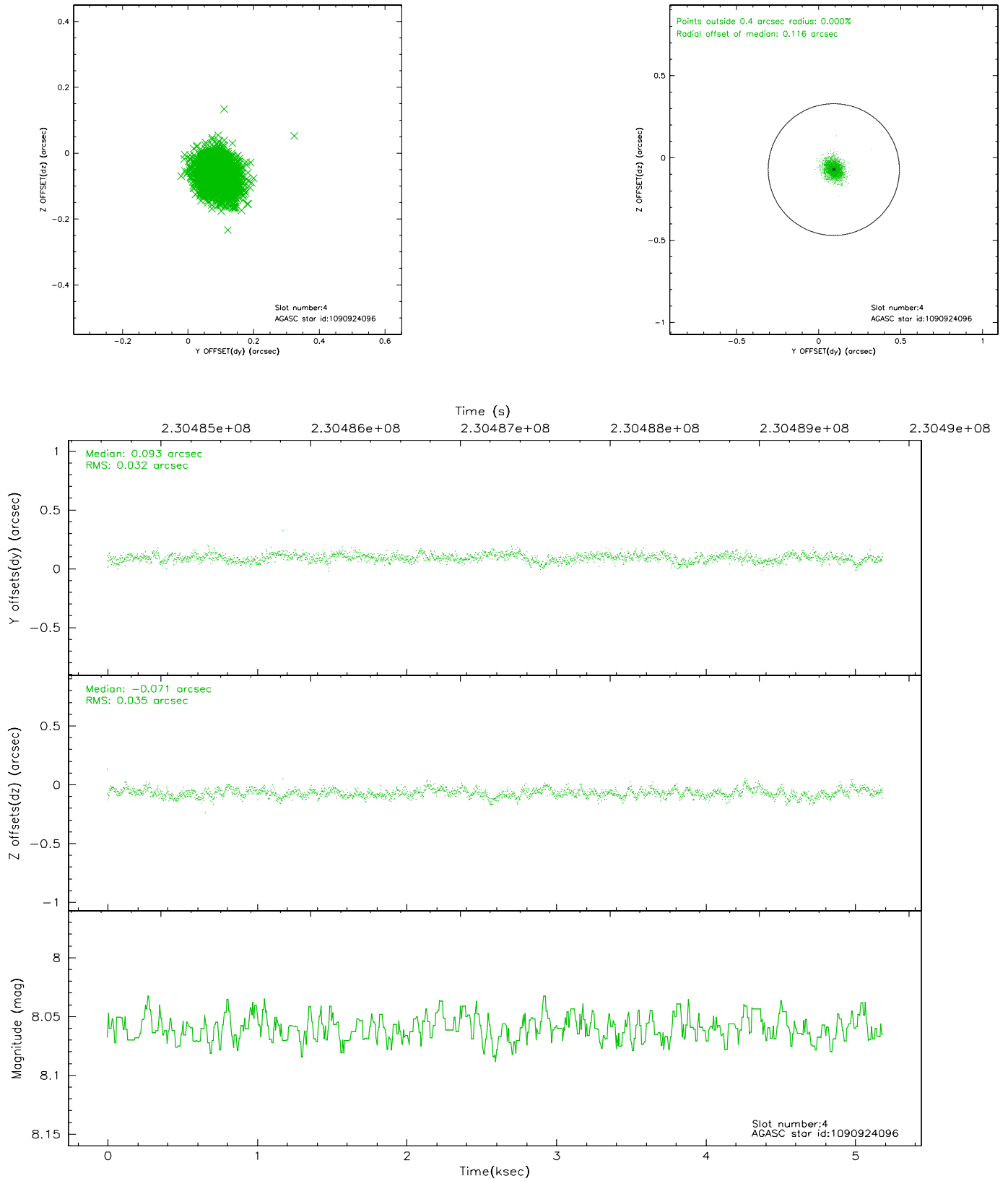
slot	status	id	mag	n_pts	med_dy	med_dz	dr1	dr2	ra	dec	mean_y	mean_z
0	FID	ACIS-I-1	7.24	1265	-0.019	0.054	0.006	0.012	0.000000	0.000000	932.19	-833.09
1	FID	ACIS-I-5	7.23	1266	-0.127	0.017	0.006	0.011	0.000000	0.000000	-1815.39	1063.77
2	FID	ACIS-I-6	7.25	1266	0.054	-0.001	0.007	0.013	0.000000	0.000000	396.53	1709.58
3	GUIDE	1090521824	9.14	2531	-0.040	-0.157	0.086	0.139	244.711253	-50.470098	1672.46	873.70
4	GUIDE	1090924096	8.06	2531	0.093	-0.071	0.050	0.083	243.849549	-51.016855	-1101.10	1049.14
5	GUIDE	1090924384	8.06	2531	0.177	-0.245	0.069	0.115	243.330505	-50.934017	-1665.16	2124.56
6	GUIDE	1091057912	9.14	2529	-0.194	0.305	0.090	0.147	245.642757	-51.112070	1297.29	-2238.69
7	GUIDE	1091059112	9.06	2529	-0.036	0.170	0.082	0.127	245.180420	-50.736664	1646.84	-565.41

2.4 Star Slots

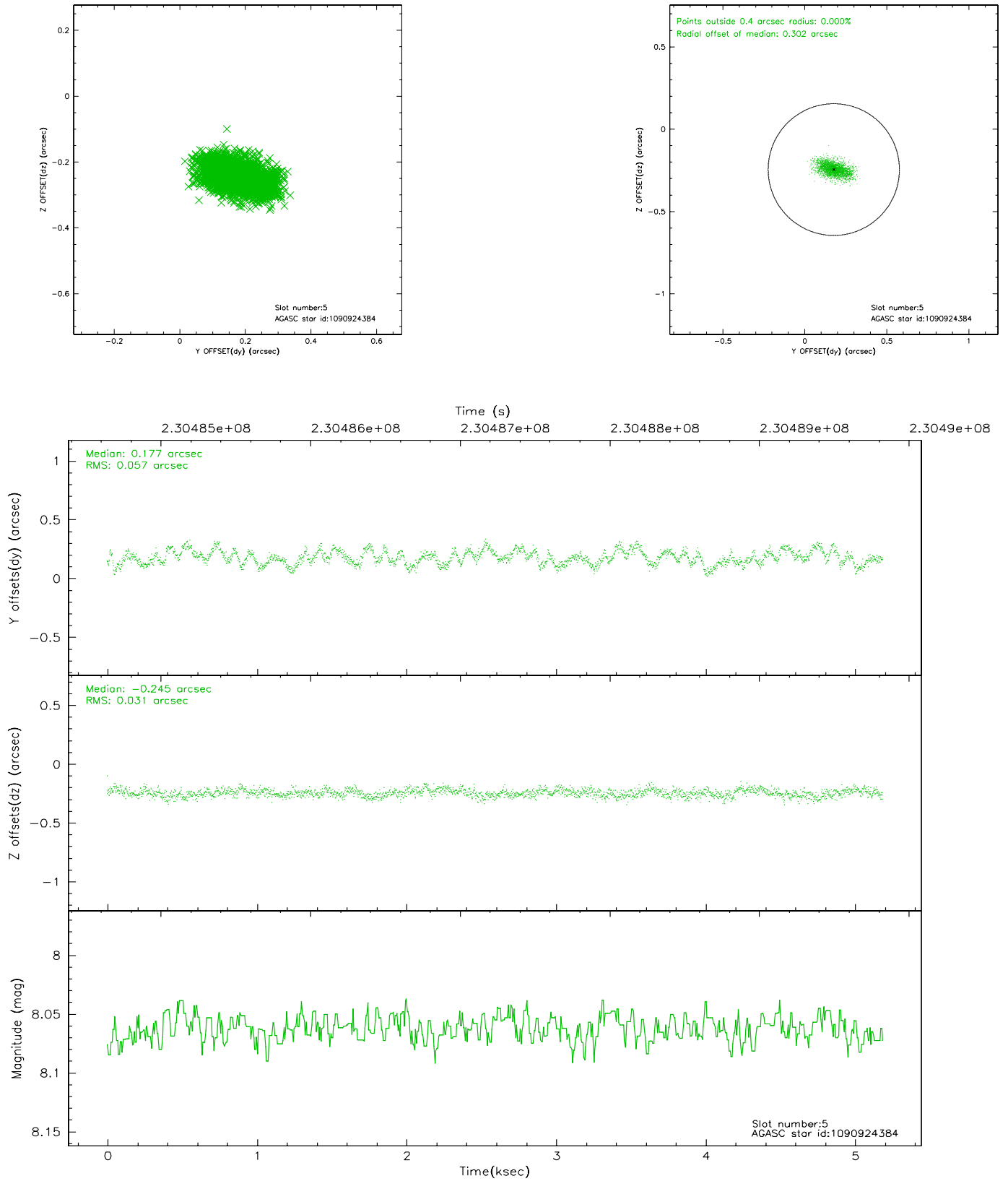
2.4.1 Slot 3



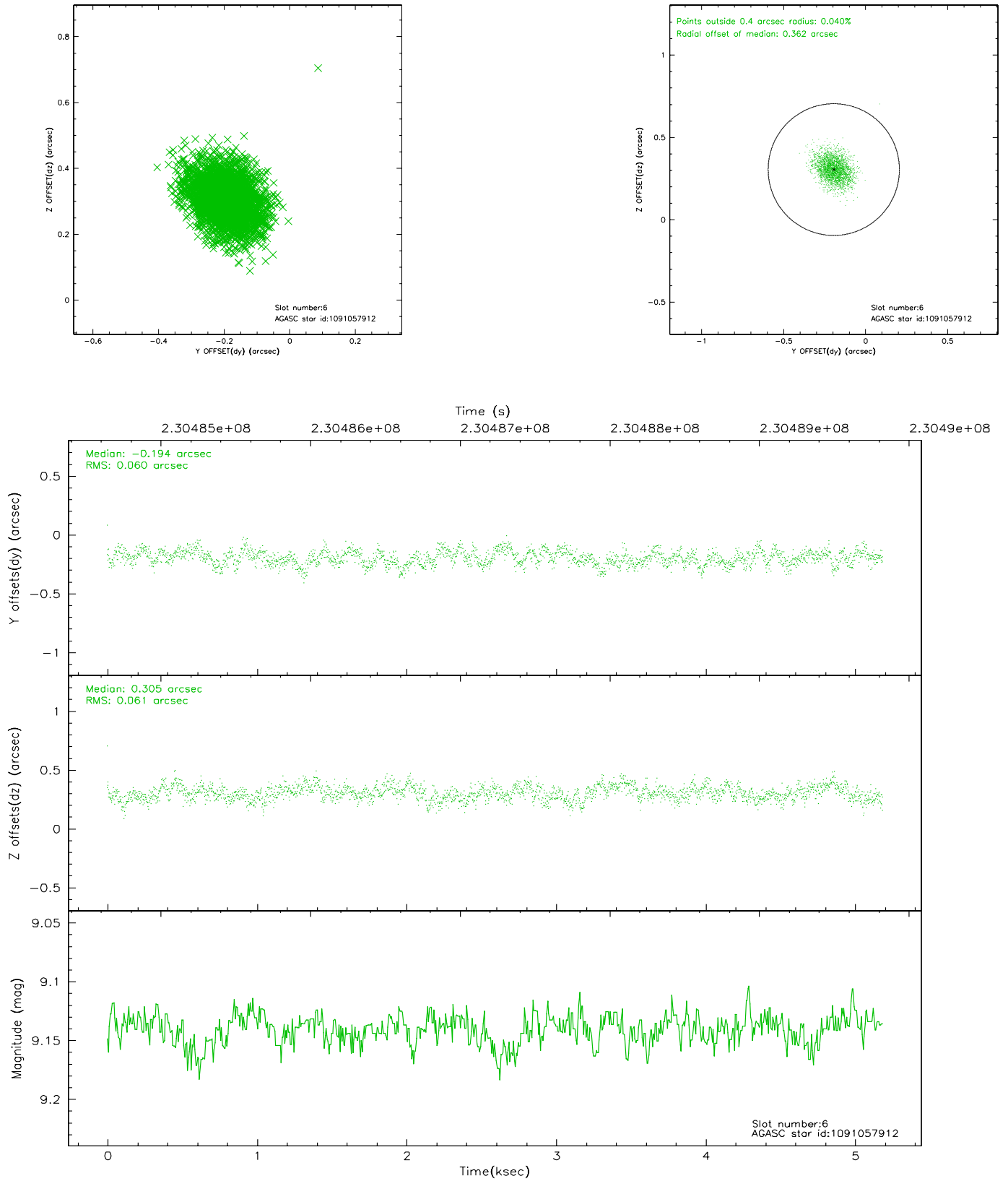
2.4.2 Slot 4



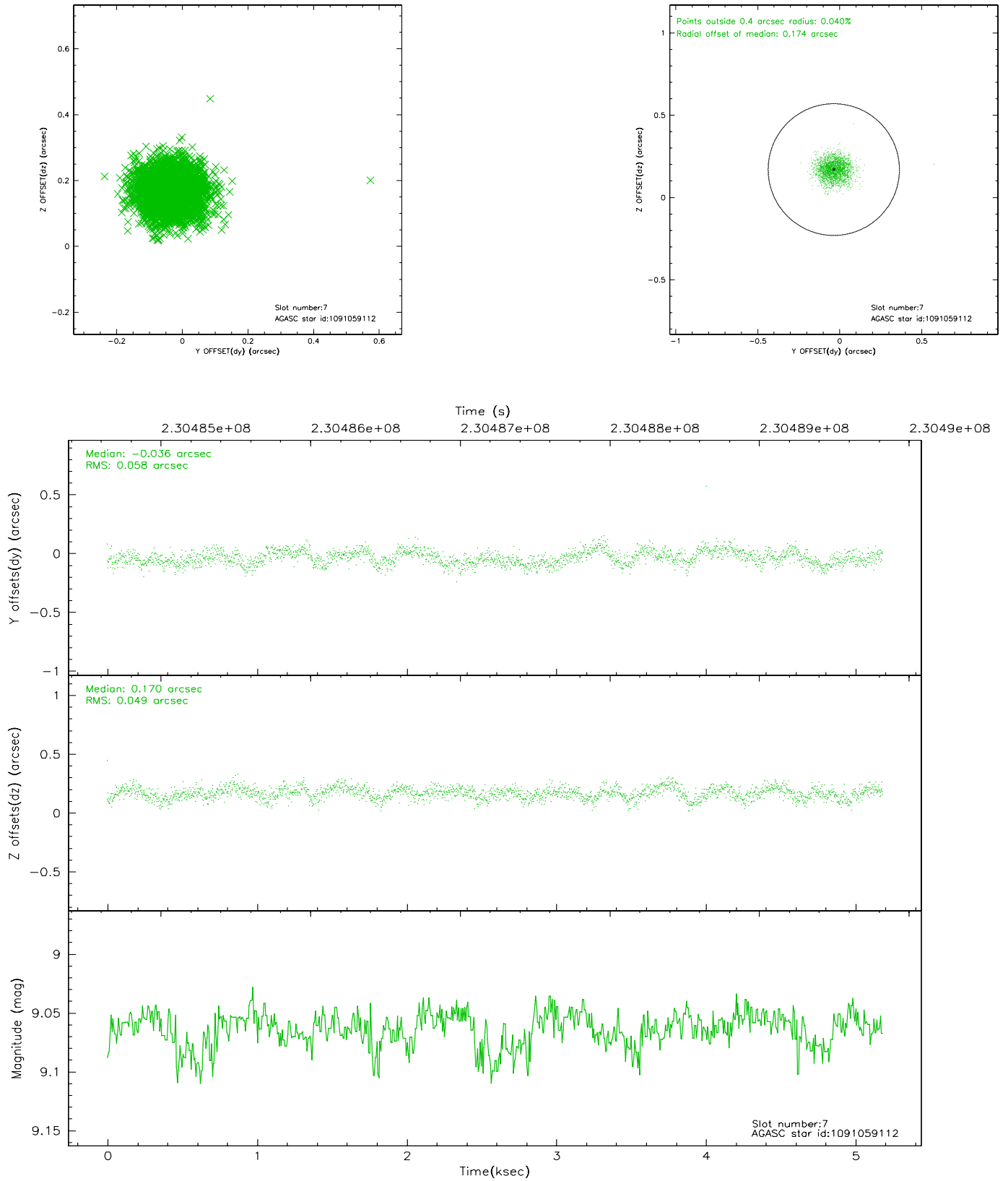
2.4.3 Slot 5



2.4.4 Slot 6

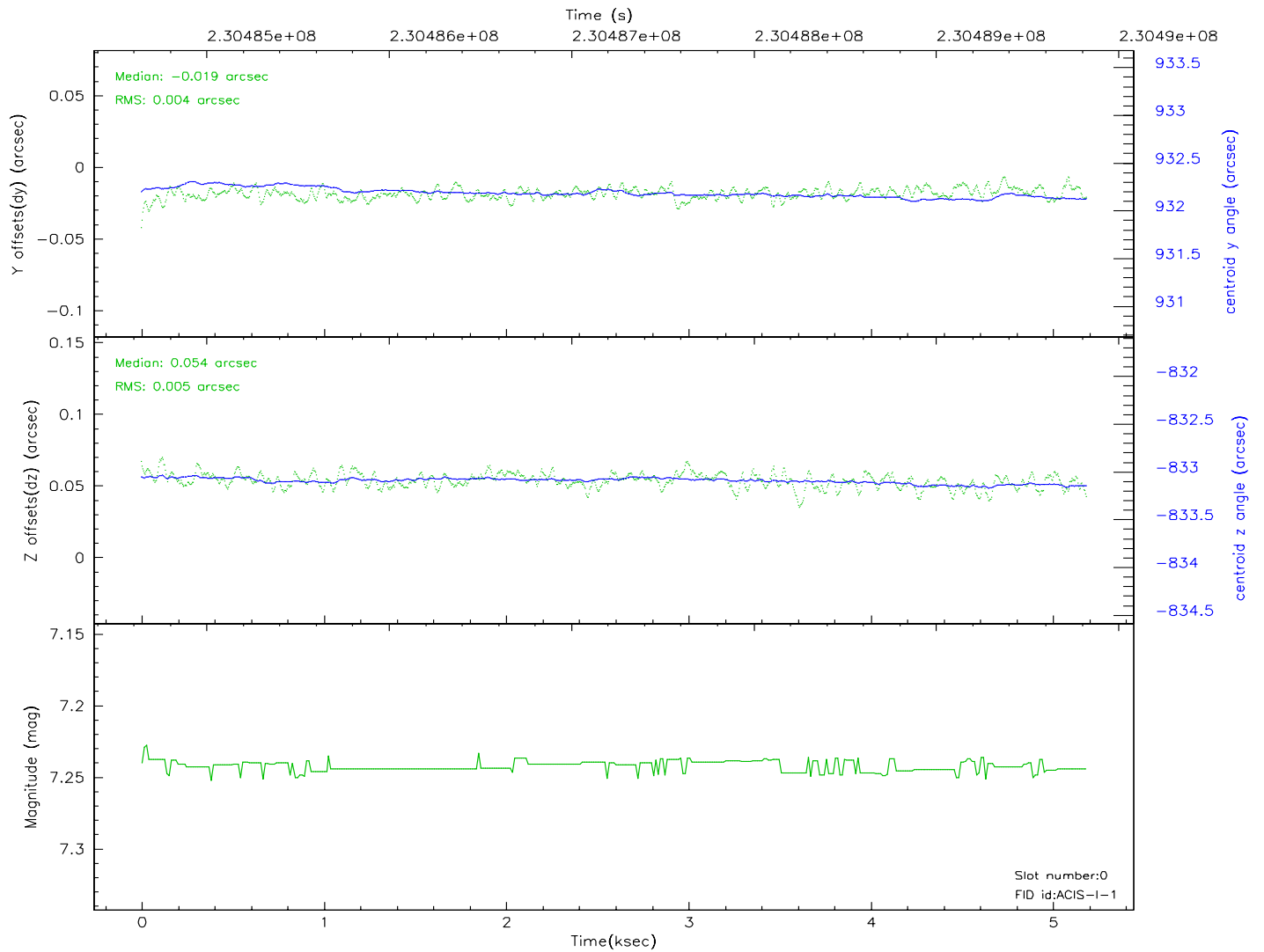
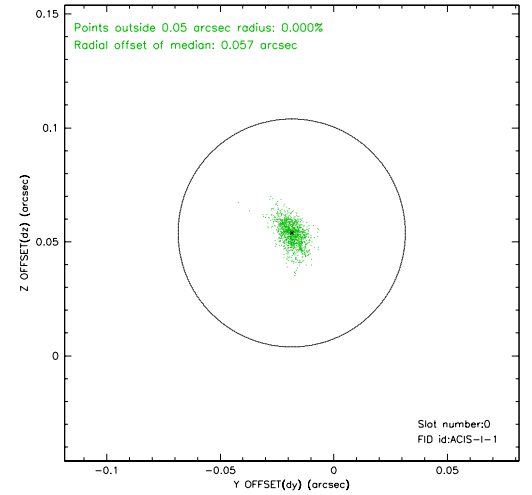
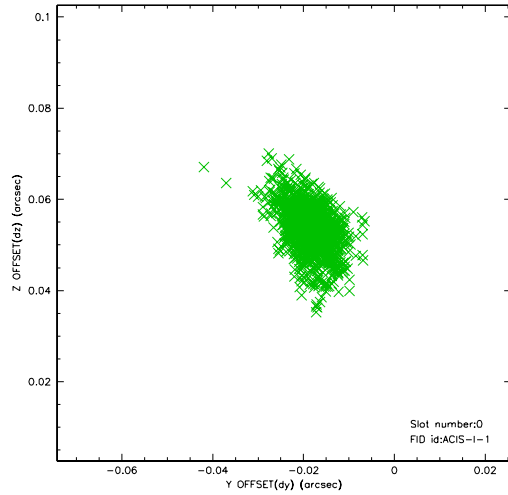


2.4.5 Slot 7

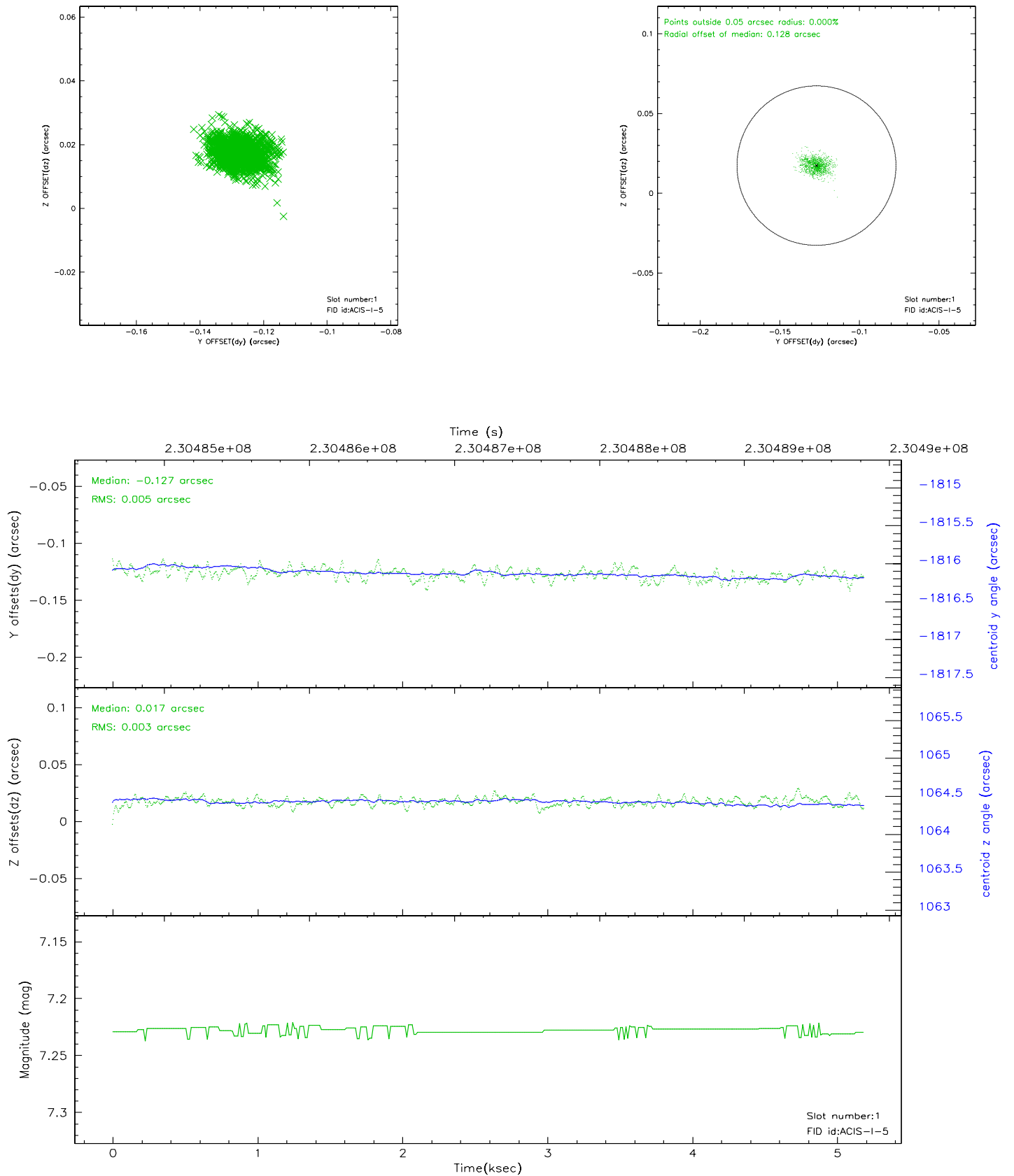


2.5 FID Slots

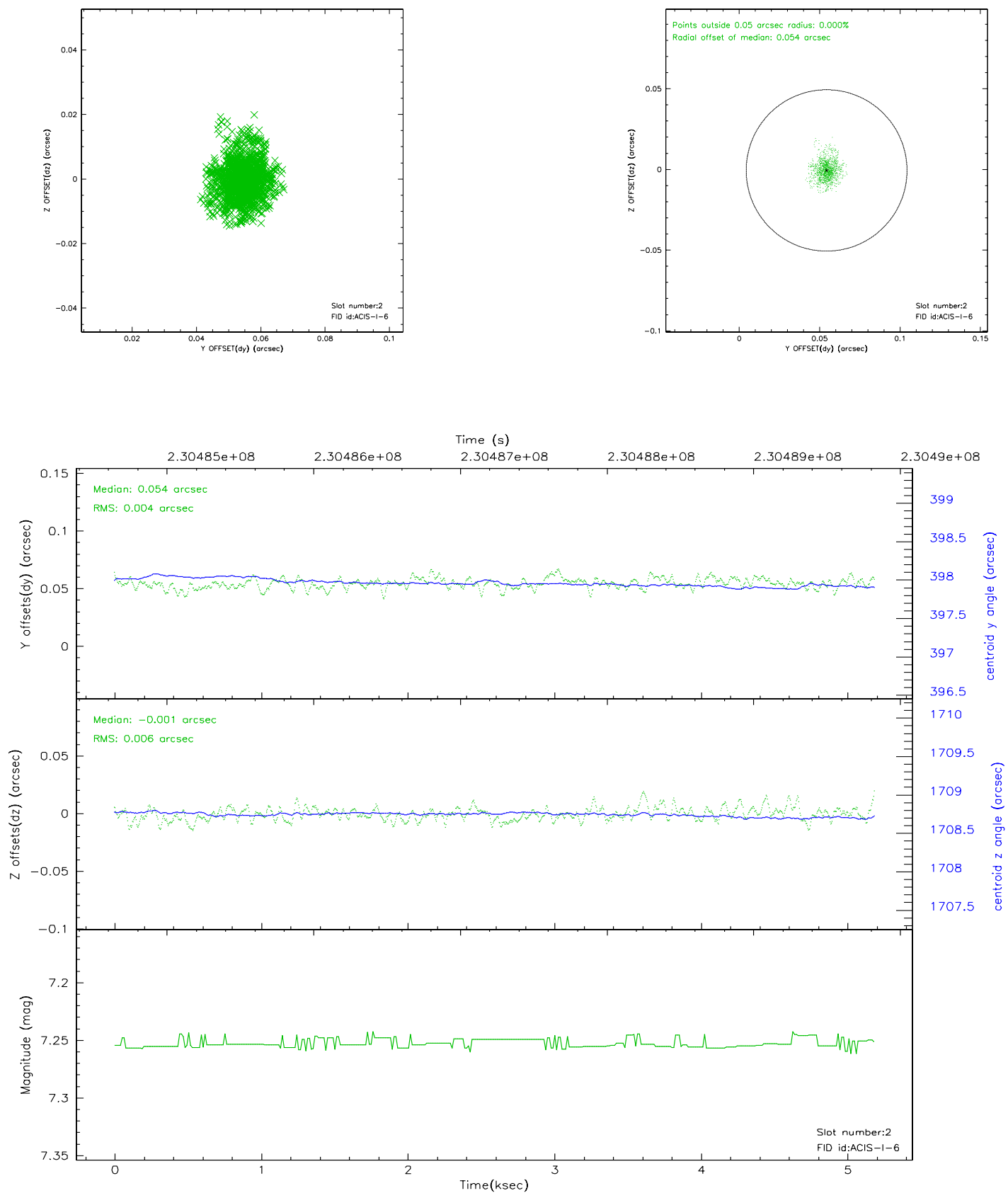
2.5.1 Slot 0



2.5.2 Slot 1



2.5.3 Slot 2



3 Point Sources

7.06 arcmin



A Summary

A.1 Status

V&V Scientist	Jen Lauer
V&V Date (YYYY-MM-DD)	2006.03.02
V&V Edition	1
V&V Disposition and Status	OK
V&V Charge Time	5.184759

A.2 Comments

Monitor constraint met.

Target deliberately offset from aimpoint by about 45 arcsec to the SW,
mitigating pileup.PSF may be affected.