

# V&V Reference Report

## L2 ASCDS Version : 7.6.7.1

Observation 5585 - L2 Version 002  
Chandra X-Ray Center

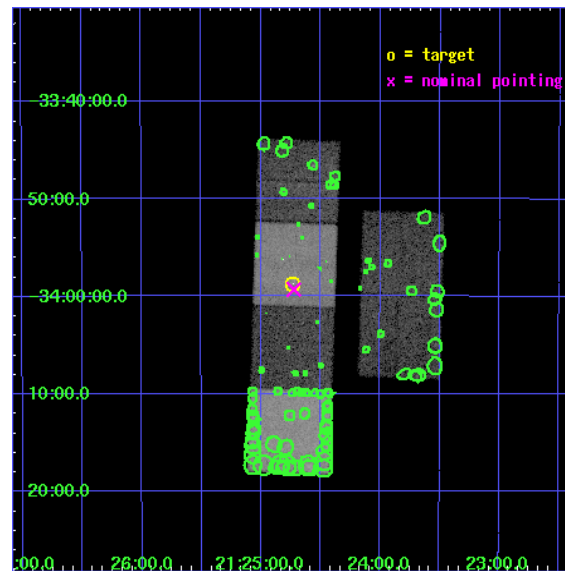
L2 Processing Date : Apr 7 2006

## Contents

<b>1</b>	<b>Front</b>	<b>2</b>
<b>2</b>	<b>OBI</b>	<b>3</b>
2.1	OBI . . . . .	3
2.1.1	Images . . . . .	3
2.1.2	Bias . . . . .	3
2.1.3	Parameters . . . . .	4
2.1.4	Events . . . . .	4
2.2	Compared Parameters . . . . .	5
2.3	Aspect . . . . .	6
2.4	Star Slots . . . . .	9
2.4.1	Slot 3 . . . . .	9
2.4.2	Slot 4 . . . . .	10
2.4.3	Slot 5 . . . . .	11
2.4.4	Slot 6 . . . . .	12
2.4.5	Slot 7 . . . . .	13
2.5	FID Slots . . . . .	14
2.5.1	Slot 0 . . . . .	14
2.5.2	Slot 1 . . . . .	15
2.5.3	Slot 2 . . . . .	16
<b>3</b>	<b>Point Sources</b>	<b>17</b>
<b>A</b>	<b>Summary</b>	<b>18</b>
A.1	Status . . . . .	18
A.2	Comments . . . . .	18

# 1 Front

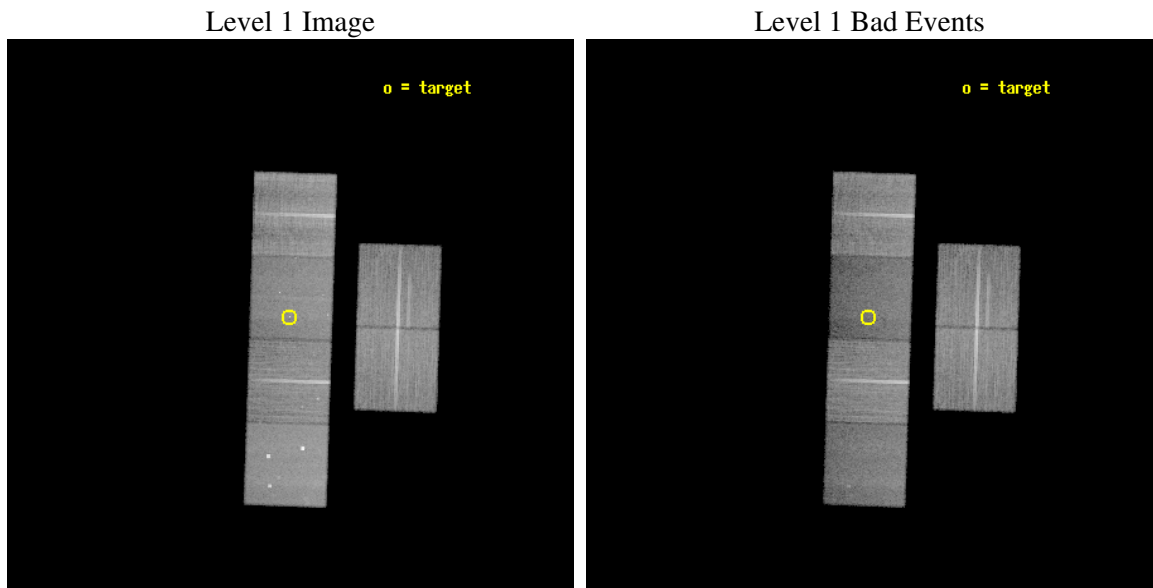
seq_num	500574
obs_id	5585
title	X-Ray Counterparts to Neutron Star Bow Shocks
observer	Dr. SHAMIBRATA CHATTERJEE
object	PSR J2124-3358
dtcycle	0
cycle	P
ra_targ	321.1825
dec_targ	-33.978944
ra_nom	321.18081798318
dec_nom	-33.98850374794
roll_nom	271.85117964463
revision	2
ontime	30156.799887657
livetime	29774.936329235
ontime2	30156.799887657
ontime3	30156.799887657
ontime5	30156.799887657
ontime6	30156.799887657
ontime7	30156.799887657
ontime8	30156.799887657
l2events	246916



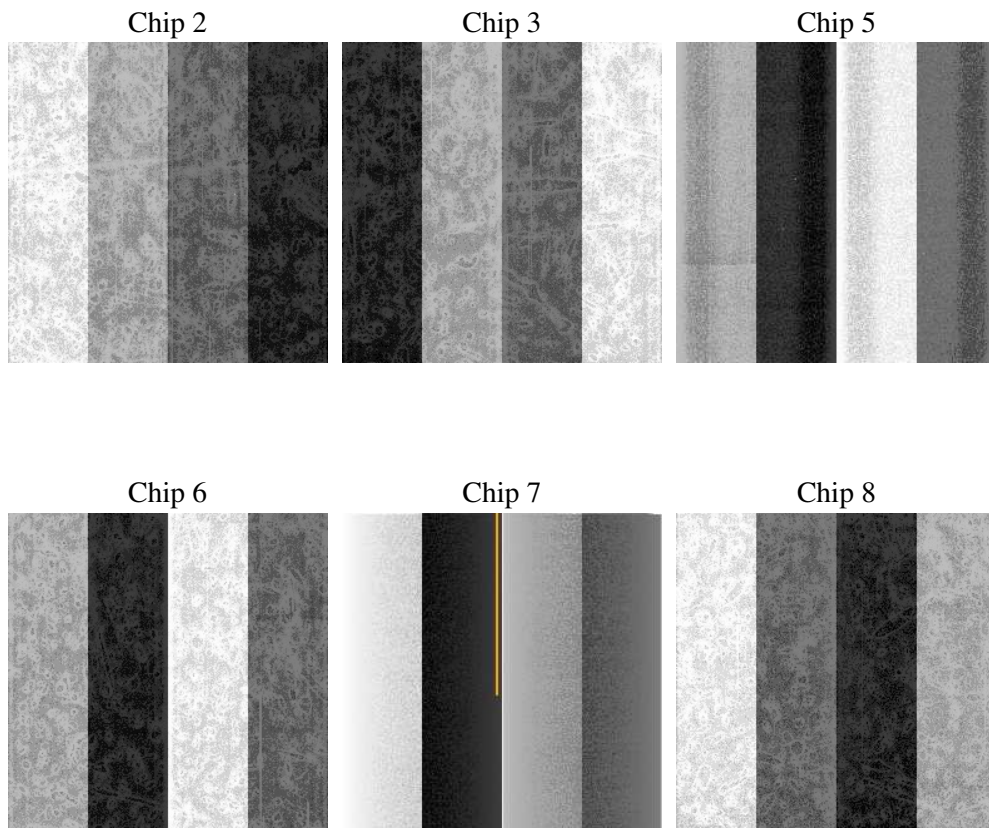
## 2 OBI

### 2.1 OBI

#### 2.1.1 Images



#### 2.1.2 Bias



### 2.1.3 Parameters

obi_num	1
ascdsver	7.6.7.1
caldsver	3.2.1
date	2006-04-07T08:16:24
revision	2

sched_exp_time	30000.000000
ontime	30462.17043215
ontime2	30462.170412242
ontime3	30462.170412242
ontime5	30462.17043215
ontime6	30462.17043215
ontime7	30462.17043215
ontime8	30462.17043215
l1events	1213776

### 2.1.4 Events

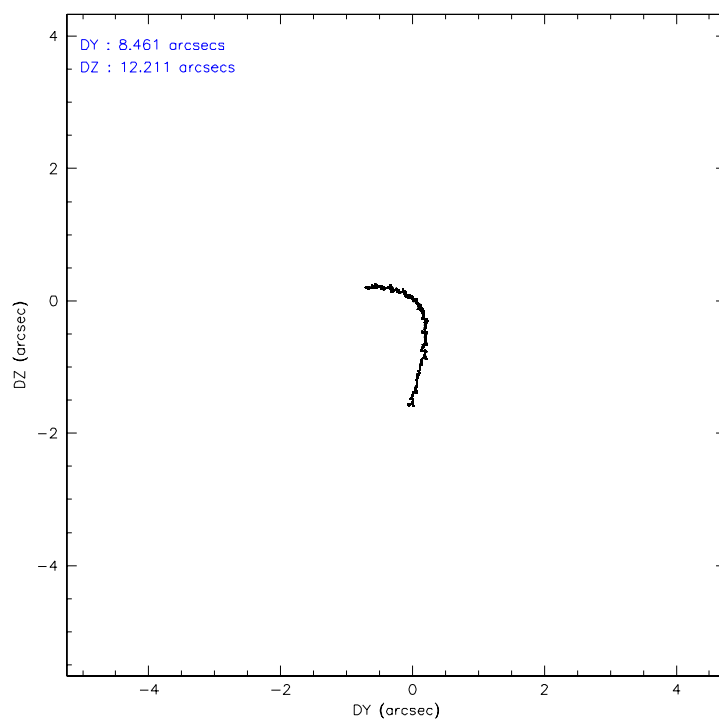
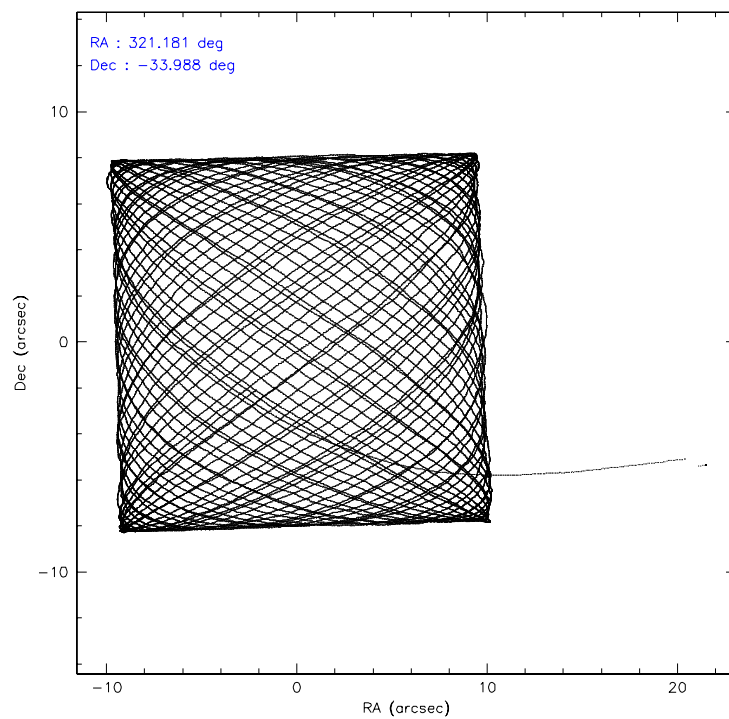
	ccd 2	ccd 3	ccd 5	ccd 6	ccd 7	ccd 8
level 1 events	205724	181837	230341	192734	175310	227830
rejected events	187881	165547	112046	173565	95576	174692
rejected %	91%	91%	48%	90%	54%	76%

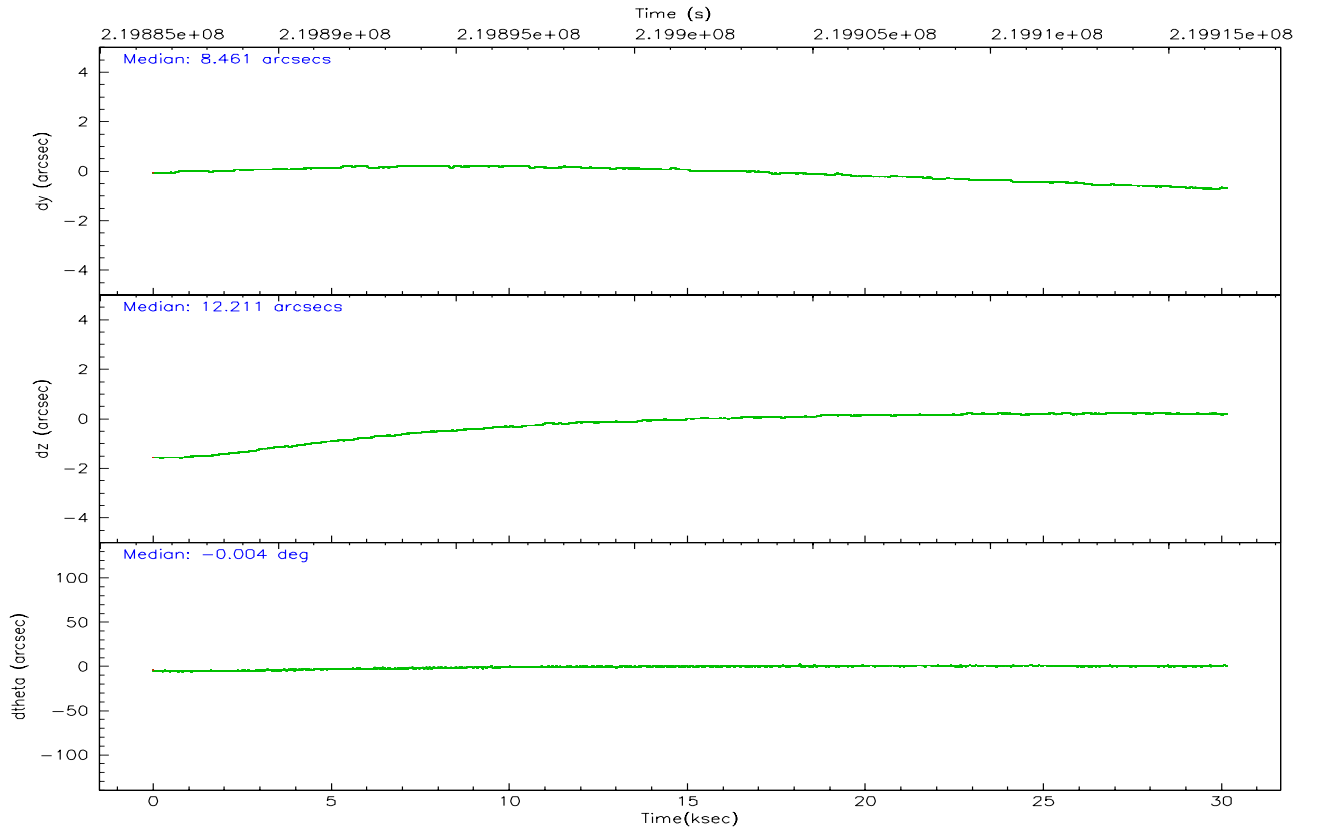
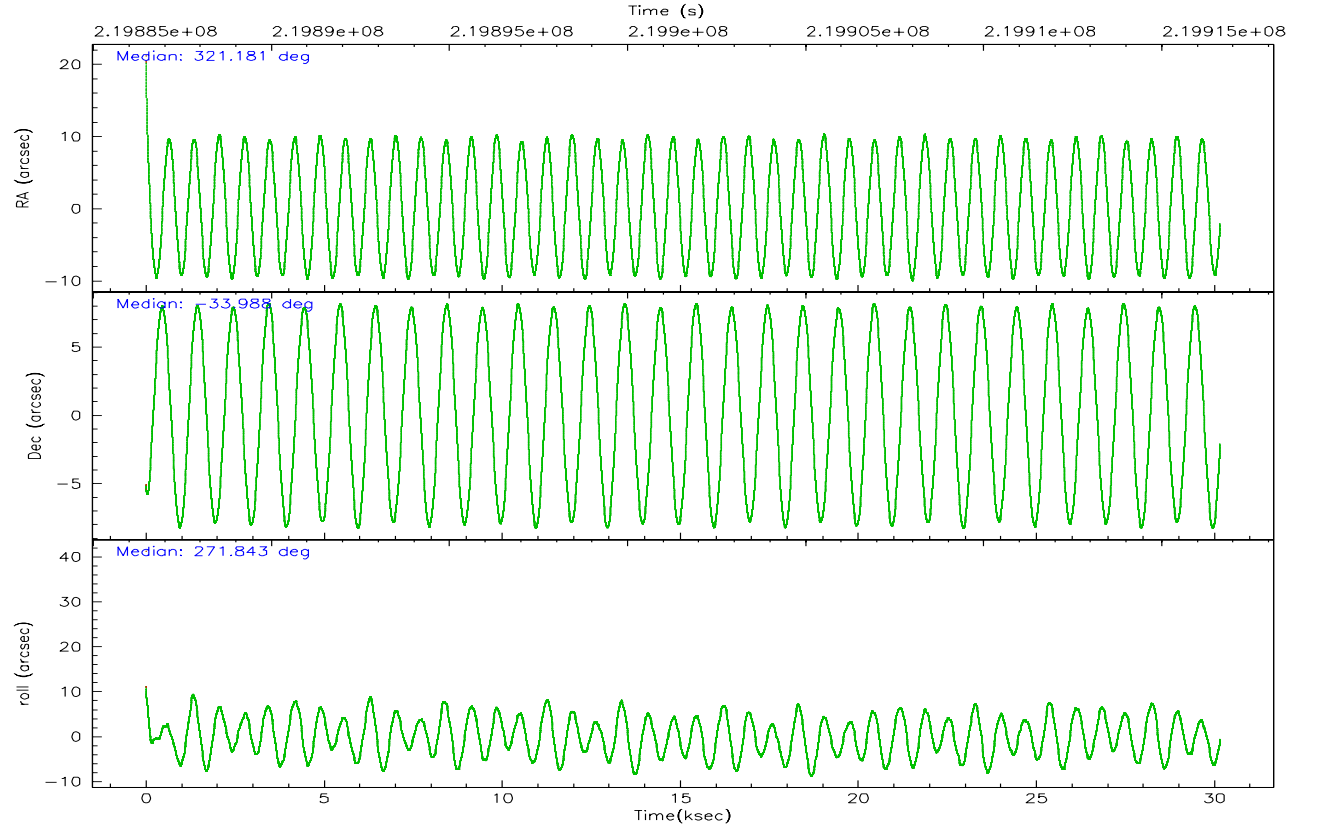
	ccd 2	ccd 3	ccd 5	ccd 6	ccd 7	ccd 8
grade 0 events	6627	5911	13774	7380	5482	15009
	3%	3%	5%	3%	3%	6%
grade 1 events	131	116	271	79	115	152
	0%	0%	0%	0%	0%	0%
grade 2 events	4276	3428	36602	4019	20785	12305
	2%	1%	15%	2%	11%	5%
grade 3 events	1950	1931	3075	2092	4944	6210
	0%	1%	1%	1%	2%	2%
grade 4 events	2021	2027	3007	2101	4874	5805
	0%	1%	1%	1%	2%	2%
grade 5 events	5292	5957	12325	6441	13649	9233
	2%	3%	5%	3%	7%	4%
grade 6 events	3143	3174	63067	3787	44460	14339
	1%	1%	27%	1%	25%	6%
grade 7 events	182284	159293	98220	166835	81001	164777
	88%	87%	42%	86%	46%	72%

## 2.2 Compared Parameters

Parameter	Planned	Actual	Parameter	Planned	Actual
Instrument	ACIS	ACIS	Obspar format version number	6	6
Detector	ACIS-235678	ACIS-235678	Obspar file type	PREDICTED	ACTUAL
Grating	NONE	NONE	Obspar update status	NONE	UPDATED
Data mode	VFAINT	VFAINT	On-chip summing requested	N	N
Observation mode	POINTING	POINTING	Subarray requested	NONE	NONE
Pointing RA	321.163127	321.1808179831757	Alternating exposures requested	N	N
Pointing Dec	-33.965582	-33.98850374793964	Primary exposure time	0.000000	3.2
Pointing Roll	271.684669	271.8511796446297			
SIM focus pos (mm)	-0.684267	-0.6828225247311905			
SIM defocus (mm)	0	0.001444936568705701			
SIM translation stage pos (mm)	-190.132523	-190.1425803651734			
SIM translation stage offset (mm)	0	0.01005778216563158			
Observation start time	219886640.184000	219885430.06518			
Observation start date	2004-12-19T23:36:16	2004-12-19T23:17:10			
Observation end time	219916640.184000	219917340.36662			
Observation end date	2004-12-20T07:56:16	2004-12-20T08:09:00			
Read mode	TIMED	TIMED			

## 2.3 Aspect





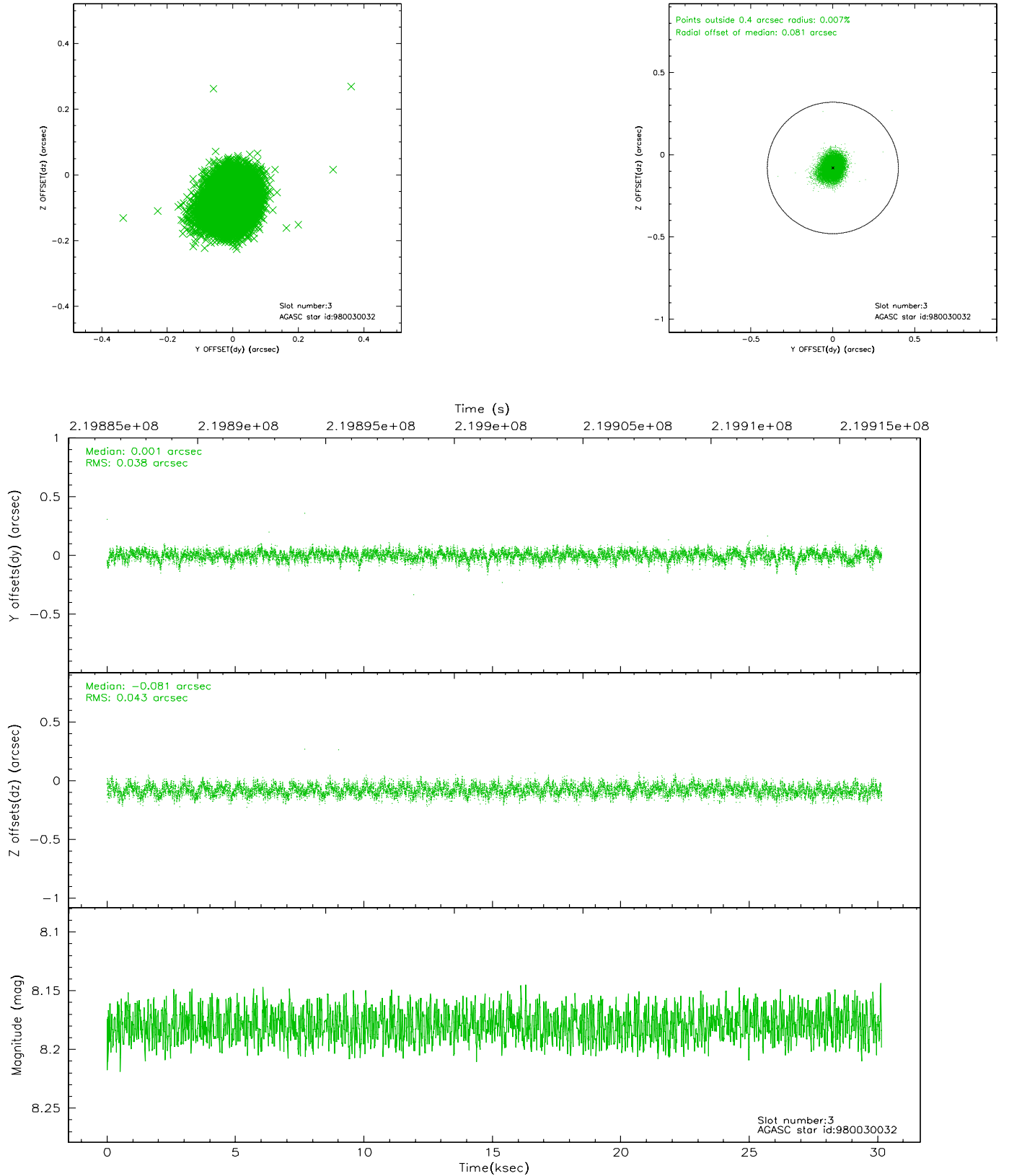
### Slot Statistics

slot	status	id	mag	n_pts	med_dy	med_dz	dr1	dr2	ra	dec	mean_y	mean_z
0	FID	ACIS-S-2	7.10	7355	0.001	-0.000	0.015	0.030	0.000000	0.000000	-761.14	-1733.20
1	FID	ACIS-S-4	7.20	7357	0.054	0.001	0.021	0.031	0.000000	0.000000	2152.15	175.22
2	FID	ACIS-S-5	7.23	7357	-0.085	0.011	0.017	0.024	0.000000	0.000000	-1813.98	168.97
3	GUIDE	980030032	8.18	14712	0.001	-0.081	0.061	0.098	320.713209	-33.668222	-1106.17	-1315.95
4	GUIDE	980030896	9.00	14707	-0.039	-0.064	0.077	0.127	320.885774	-33.670997	-1083.16	-798.74
5	GUIDE	980553736	8.77	14710	0.067	0.056	0.068	0.109	321.725540	-33.909896	-146.31	1685.59
6	GUIDE	980554264	9.26	14711	0.040	0.011	0.085	0.138	321.363795	-33.990137	106.82	596.50
7	GUIDE	980161800	9.63	14698	-0.078	0.077	0.128	0.208	321.947904	-33.438617	-1817.94	2412.29

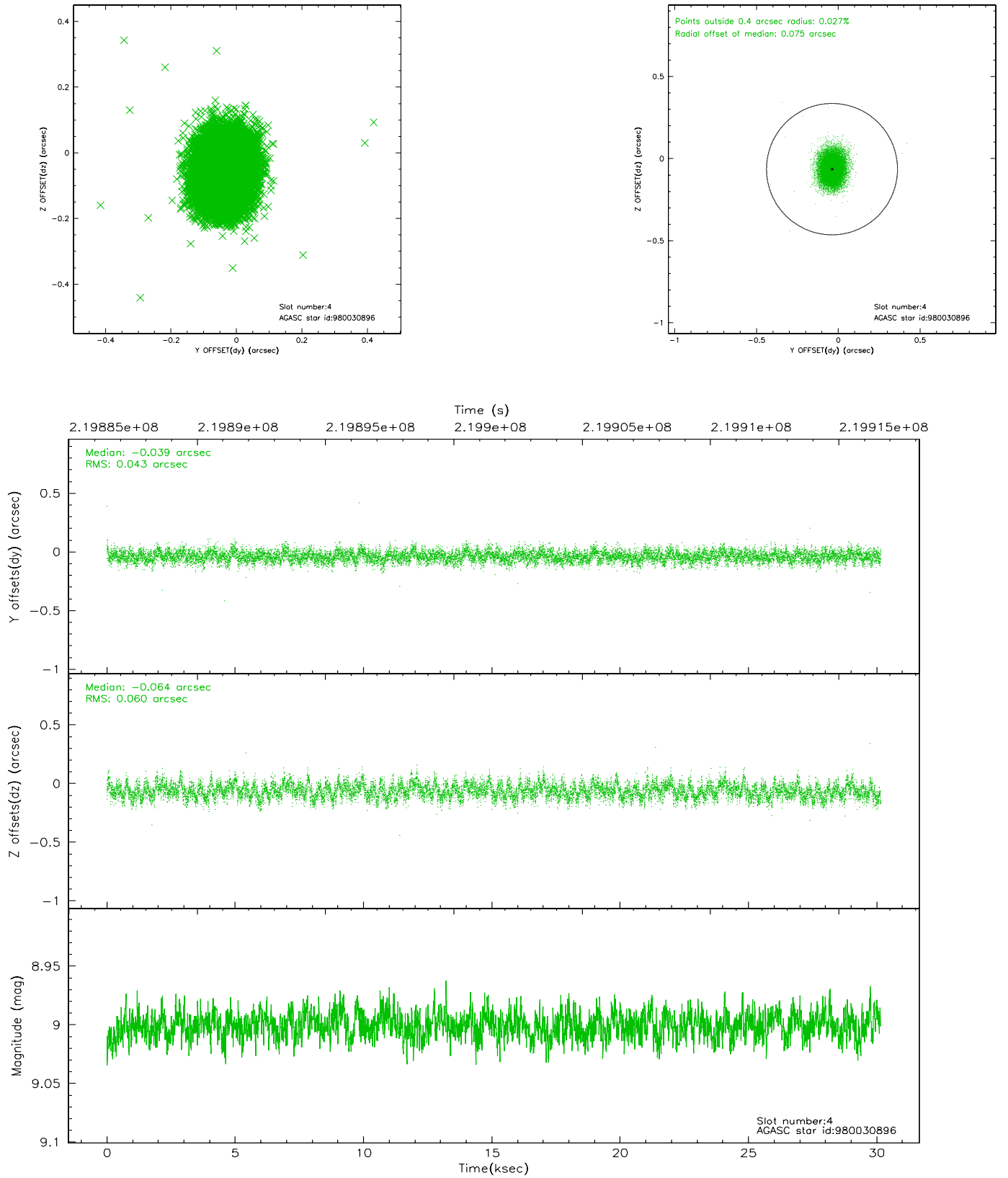


## 2.4 Star Slots

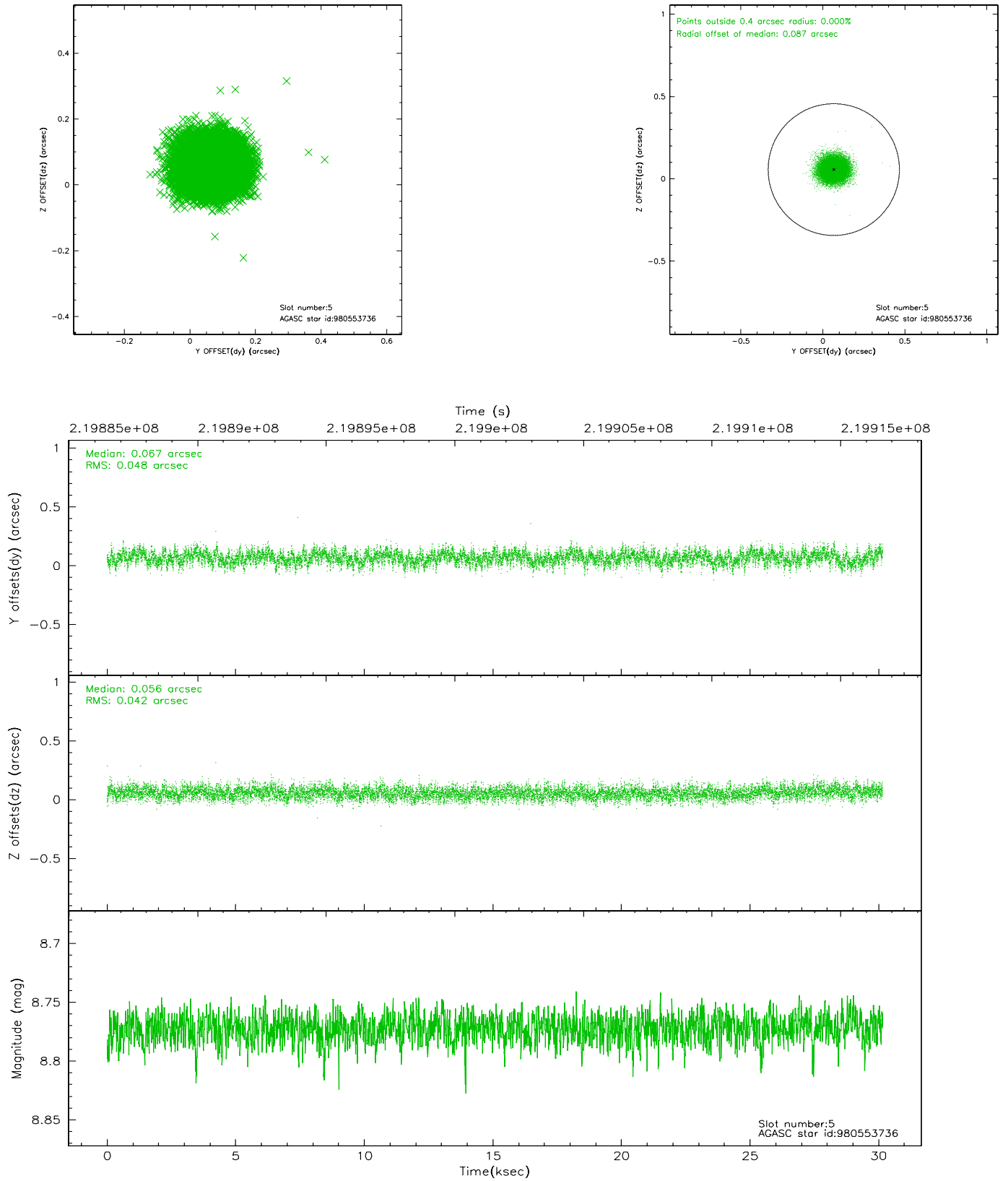
### 2.4.1 Slot 3



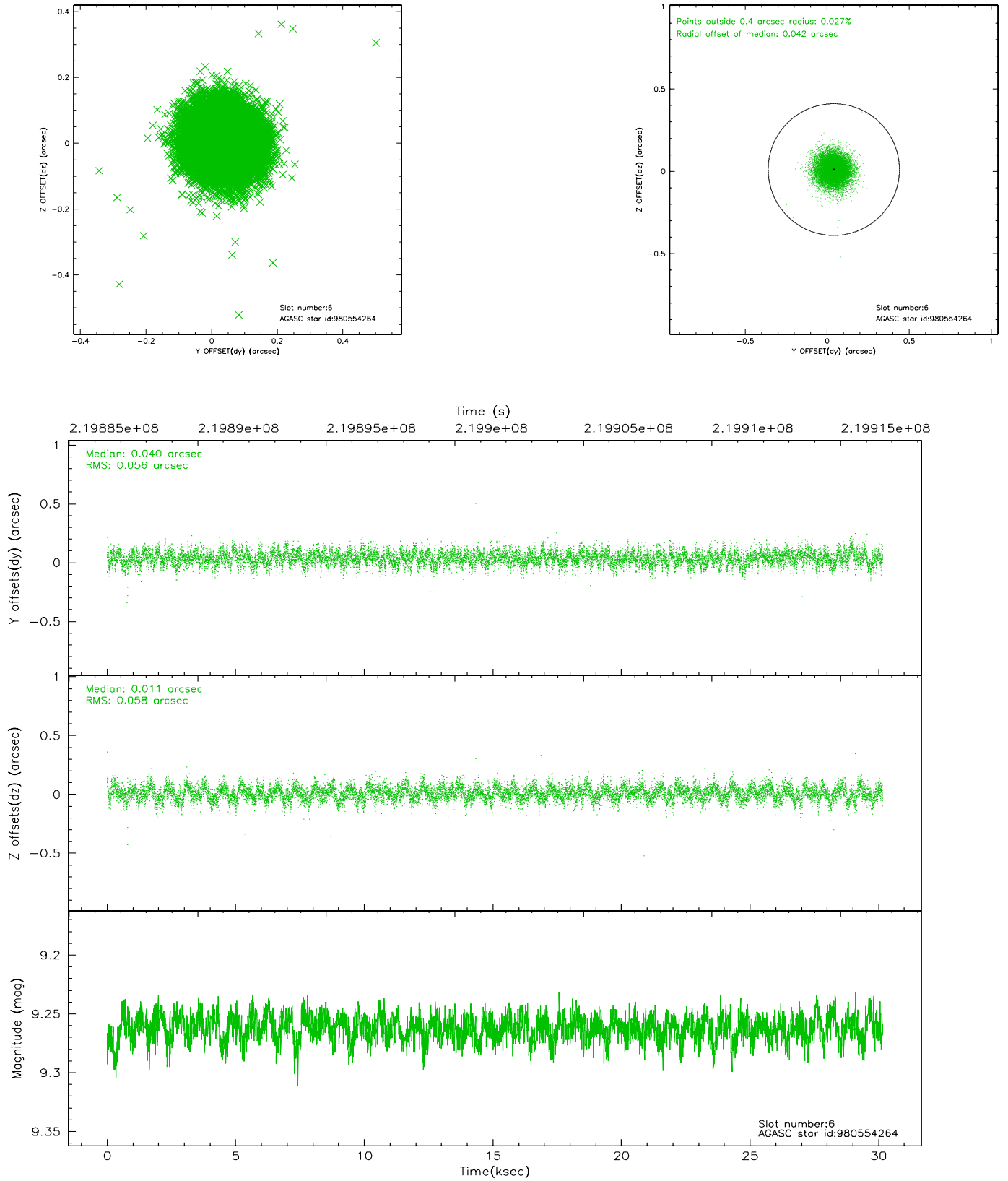
## 2.4.2 Slot 4



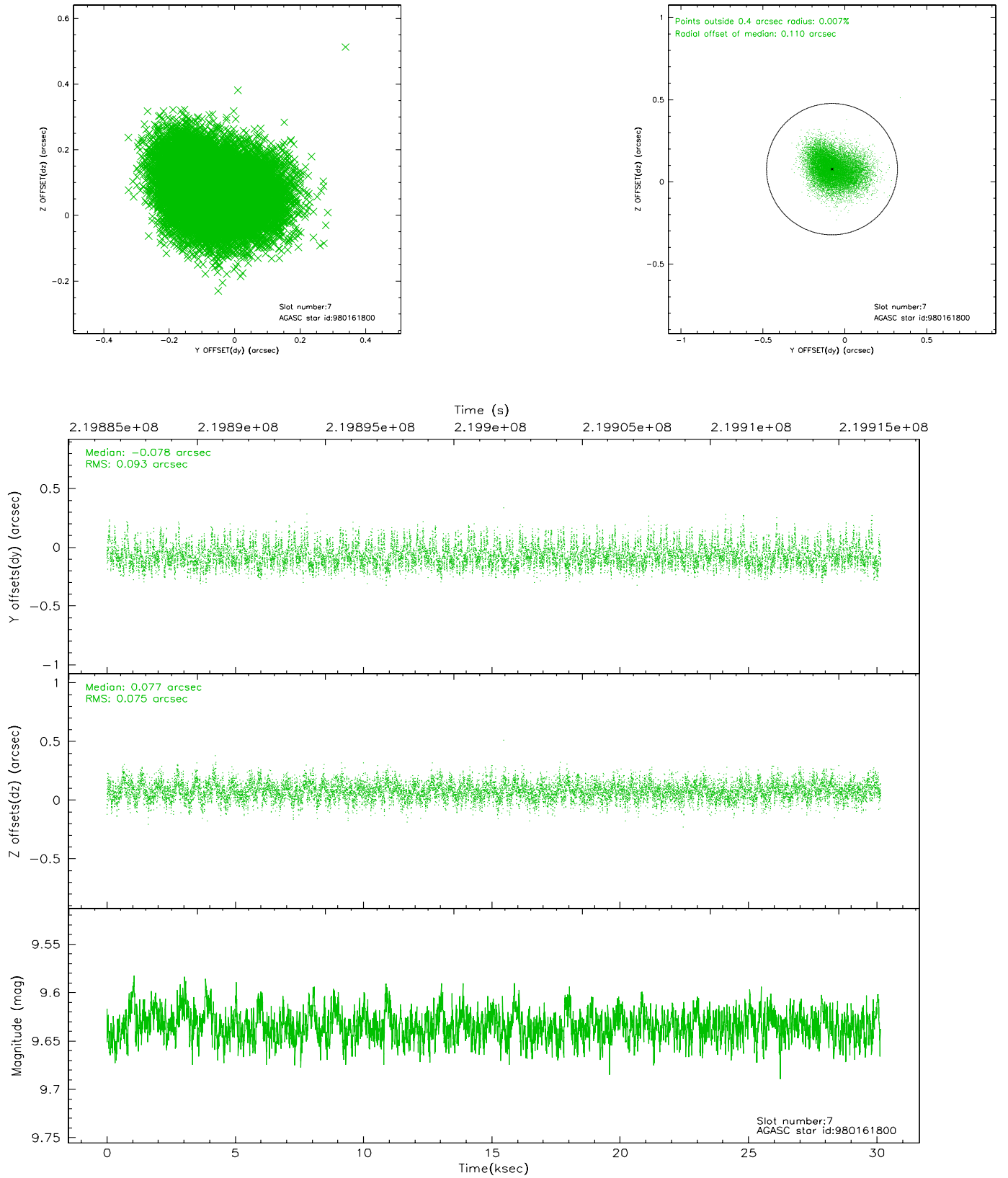
### 2.4.3 Slot 5



## 2.4.4 Slot 6

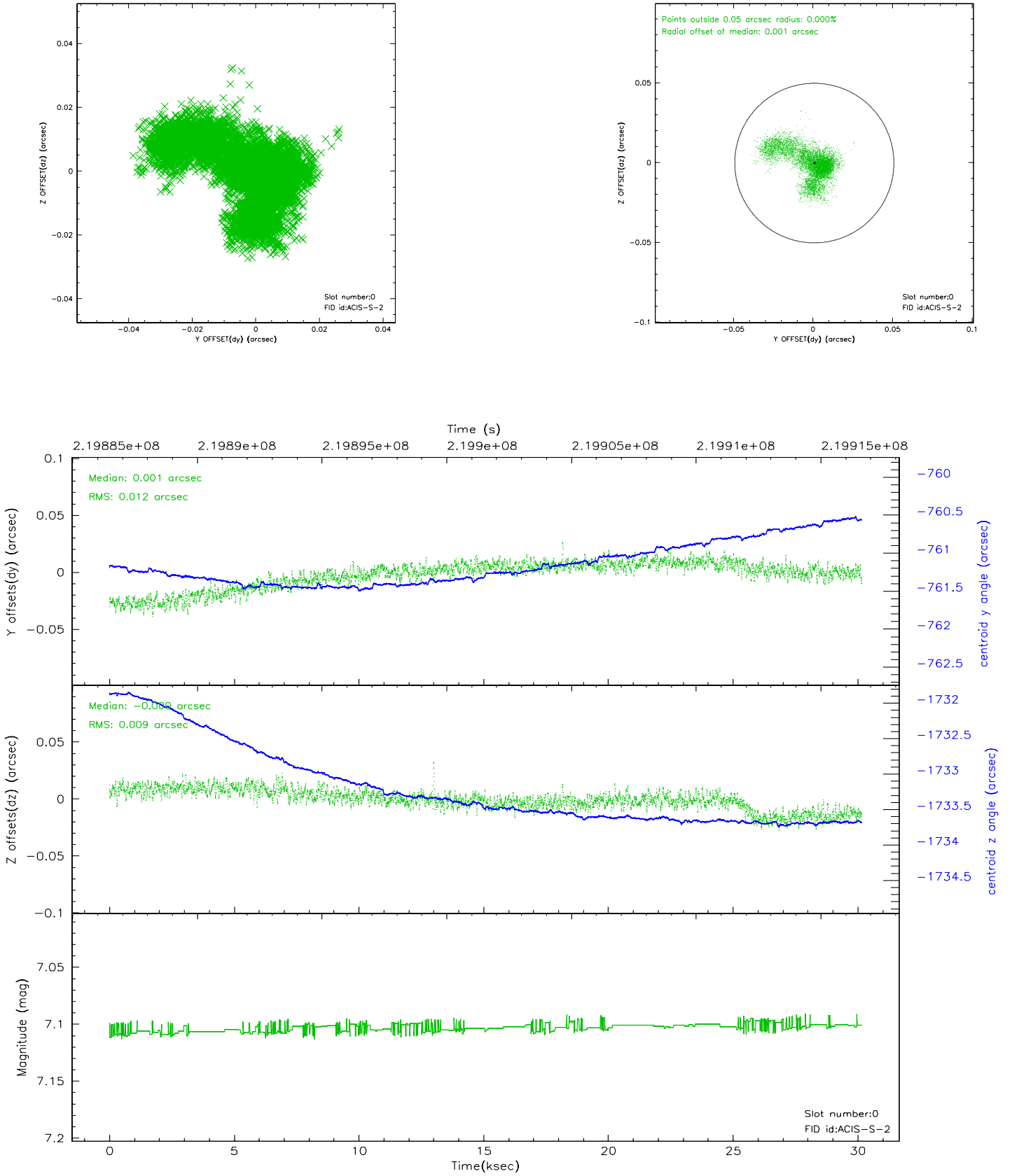


## 2.4.5 Slot 7

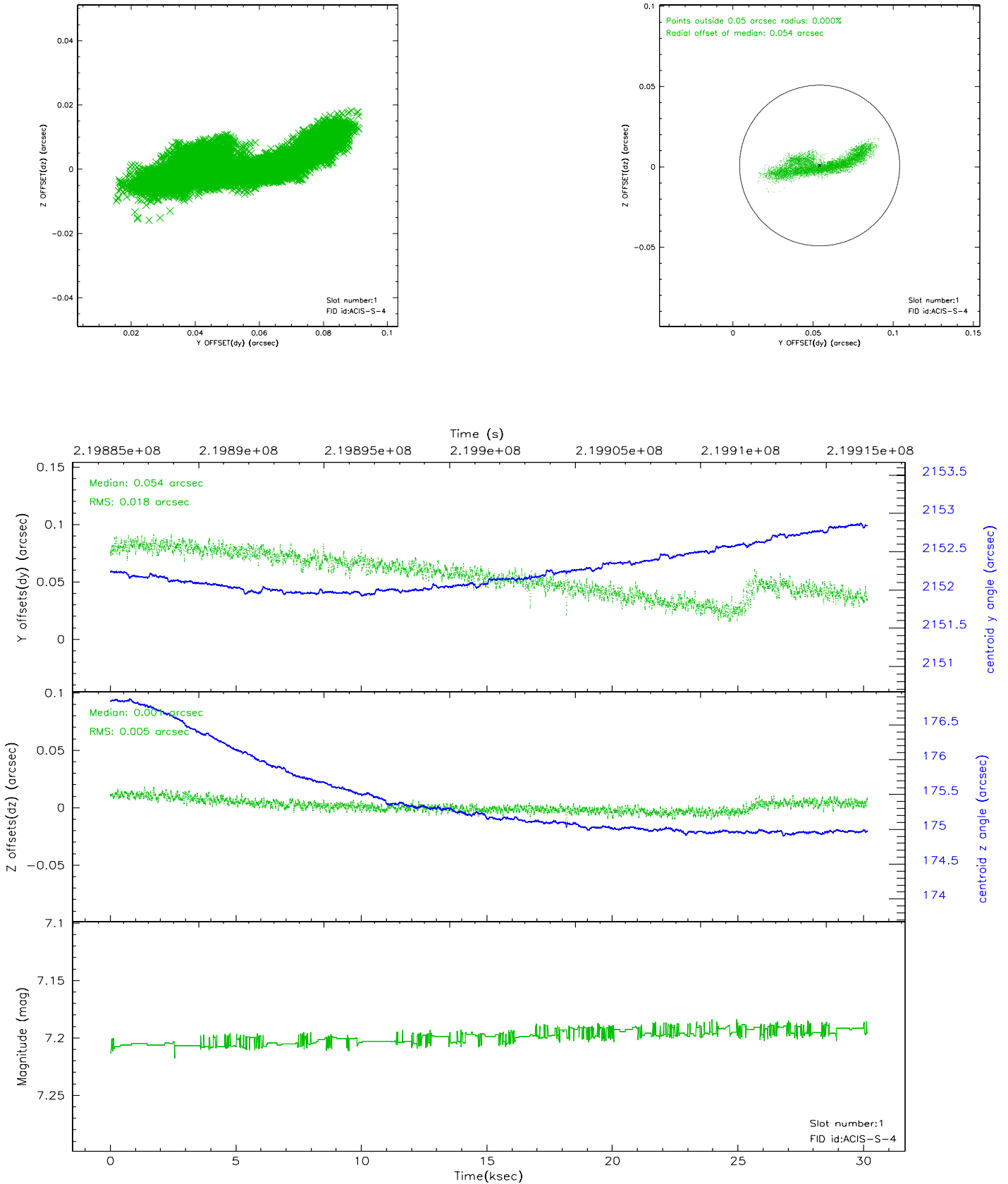


## 2.5 FID Slots

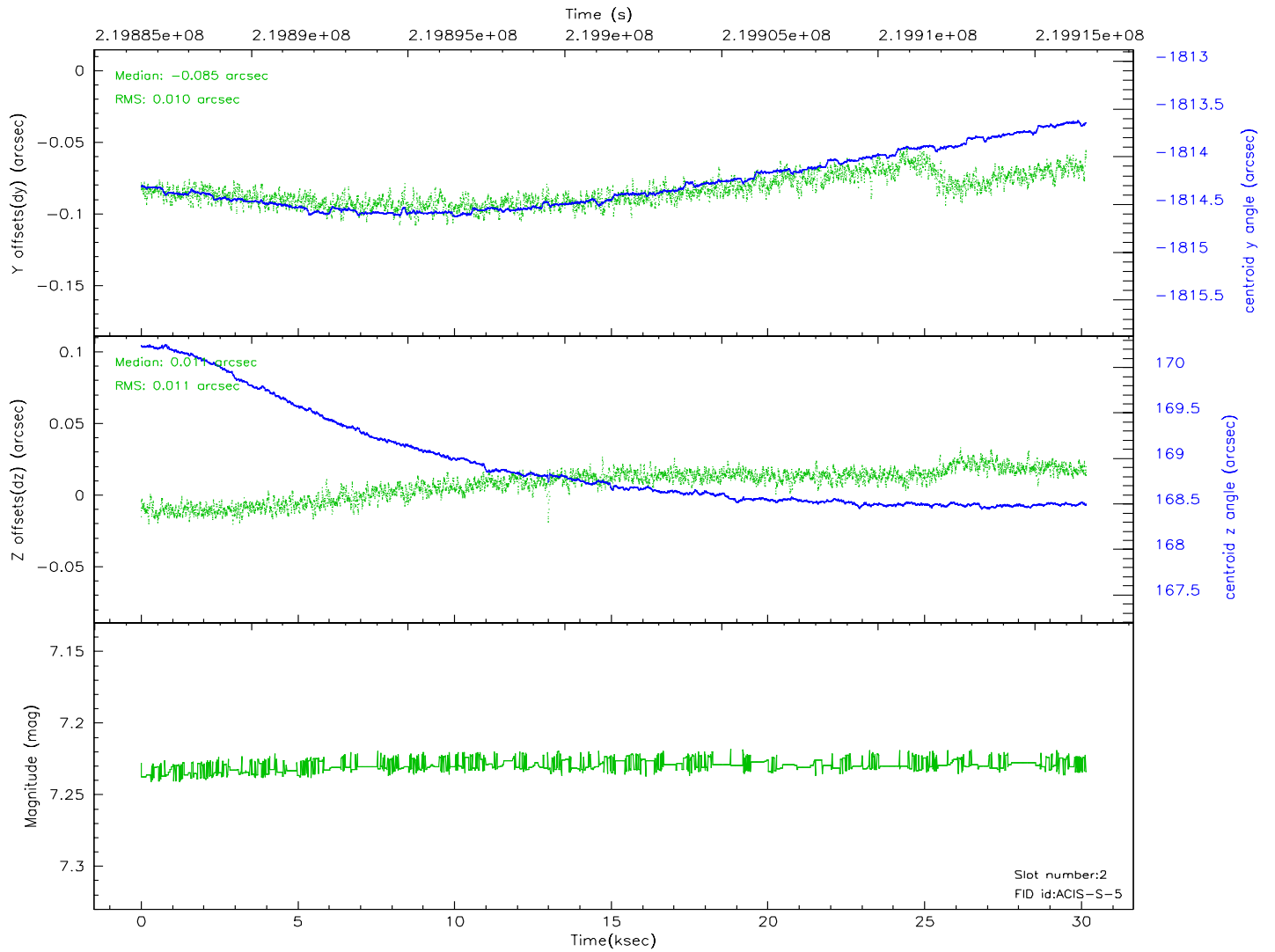
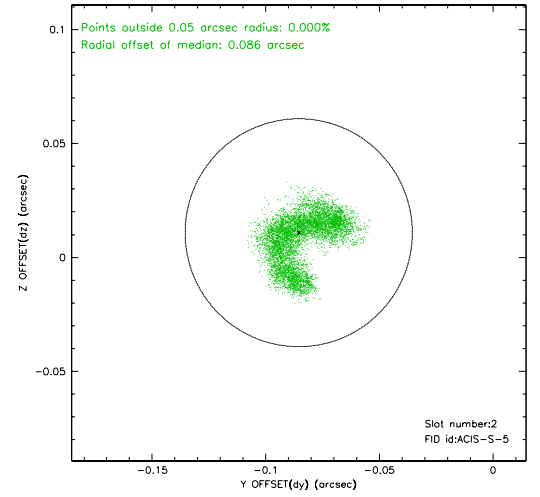
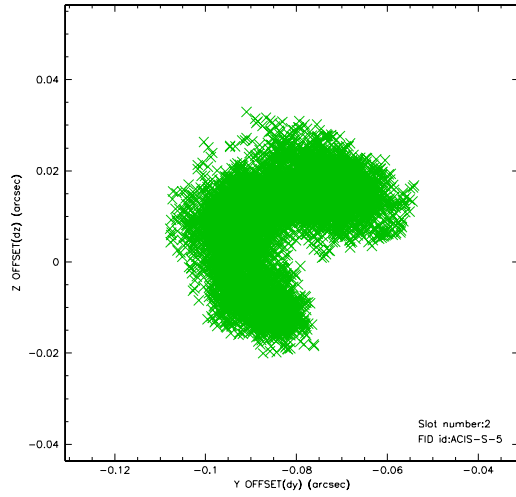
### 2.5.1 Slot 0



## 2.5.2 Slot 1

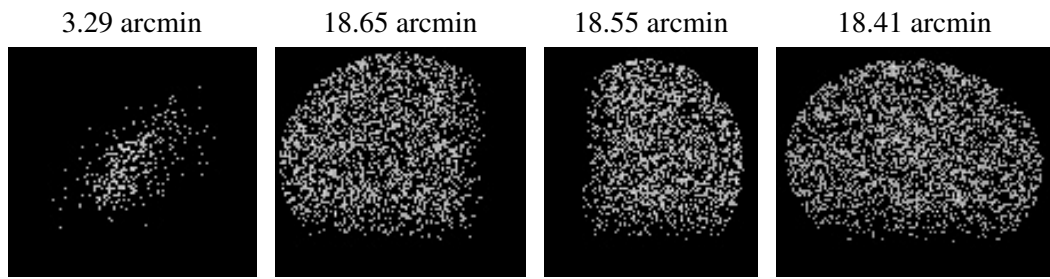


### 2.5.3 Slot 2





### 3 Point Sources



## A Summary

### A.1 Status

V&V Scientist	Beth Sundheim
V&V Date (YYYY-MM-DD)	2006.04.07
V&V Edition	1
V&V Disposition and Status	OK
V&V Charge Time	30.15679

### A.2 Comments