

V&V Reference Report

L2 ASCDS Version : 8.5.1.1

Observation 5561 - L2 Version 3
Chandra X-Ray Center

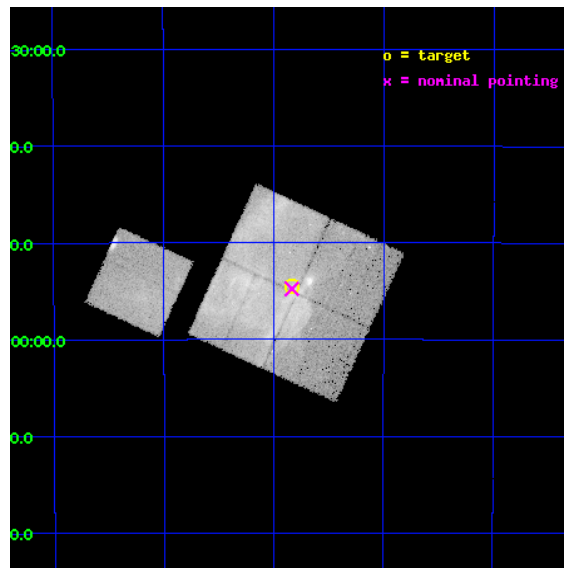
L2 Processing Date : Dec 25 2012

Contents

1	Front	2
2	OBI	3
2.1	OBI	3
2.1.1	Images	3
2.1.2	Bias	3
2.1.3	Parameters	4
2.1.4	Events	4
2.2	Compared Parameters	5
2.3	Aspect	6
2.4	Star Slots	9
2.4.1	Slot 3	9
2.4.2	Slot 4	10
2.4.3	Slot 5	11
2.4.4	Slot 6	12
2.4.5	Slot 7	13
2.5	FID Slots	14
2.5.1	Slot 0	14
2.5.2	Slot 1	15
2.5.3	Slot 2	16
A	Summary	17
A.1	Status	17
A.2	Comments	17

1 Front

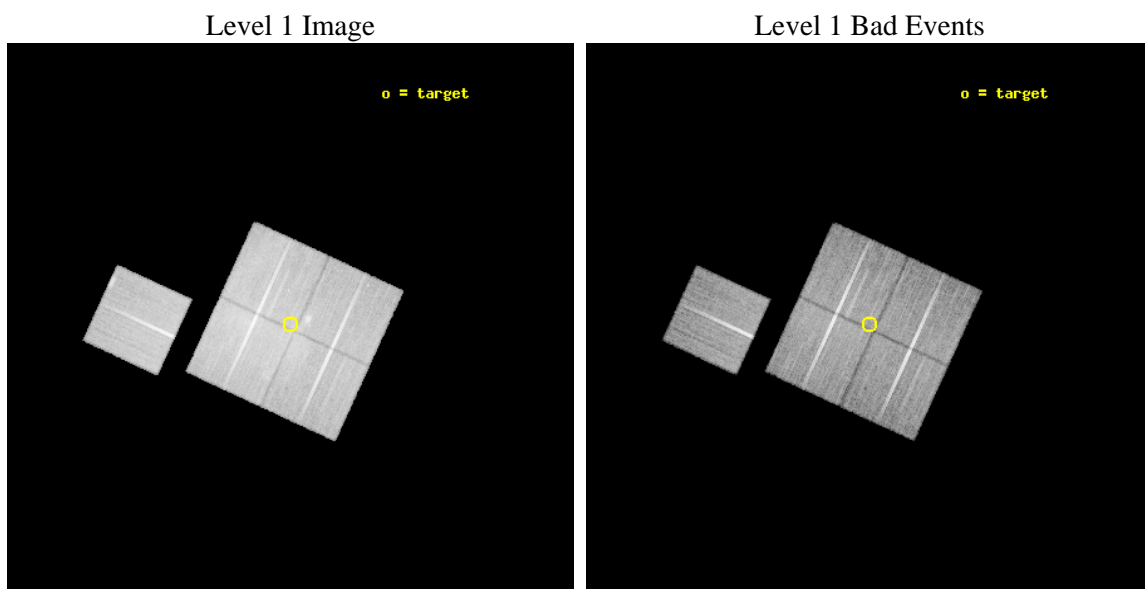
seq_num	500550	Sequence number
obs_id	5561	Observation id
title	Searching for spectral and morphological changes of X-ray structures in SNR RX J1713.7-3946	Proposal title
observer	Dr Yasunobu Uchiyama	Principal investigator
object	RX J1713.7-3946 SW	Source name
dtcycle	0	
cycle	P	events from which exps? Prim/Second/Both
ra_targ	257.958292	Observer's specified target RA [deg]
dec_targ	-39.9083	Observer's specified target Dec [deg]
ra_nom	257.95846861064	Nominal RA [deg]
dec_nom	-39.912931665815	Nominal Dec [deg]
roll_nom	294.7407121066	Nominal Roll [deg]
revision	3	Processing version of data
ontime	29428.258963138	Sum of GTIs [s]
livetime	29043.757095015	Livetime [s]
ontime0	29431.399943382	Sum of GTIs [s]
ontime1	29425.117972851	Sum of GTIs [s]
ontime2	29425.117962867	Sum of GTIs [s]
ontime3	29428.258963138	Sum of GTIs [s]
ontime6	29431.399943382	Sum of GTIs [s]
l2events	233992	Number of level 2 events



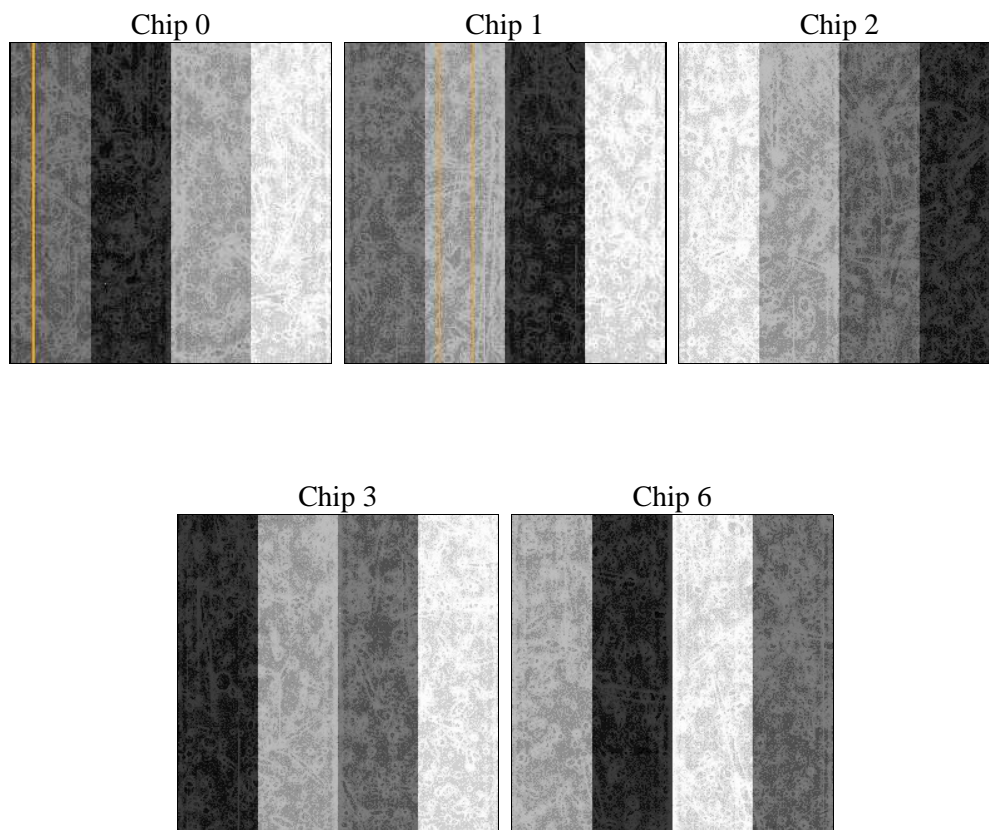
2 OBI

2.1 OBI

2.1.1 Images



2.1.2 Bias



2.1.3 Parameters

obi_num	0	Obi number	sched_exp_time	29250.000000	[s] Scheduled observation exposure time
ascdsver	8.5.1.1	Processing system revision	ontime	29428.258963138	Sum of GTIs [s]
caldsver	4.5.5	 	ontime0	29431.399943382	Sum of GTIs [s]
date	2012-12-26T00:39:31	Date and time of file creation	ontime1	29425.117972851	Sum of GTIs [s]
revision	3	Processing version of data	ontime2	29425.117962867	Sum of GTIs [s]
			ontime3	29428.258963138	Sum of GTIs [s]
			ontime6	29431.399943382	Sum of GTIs [s]
			l1events	1097489	Number of level 1 events

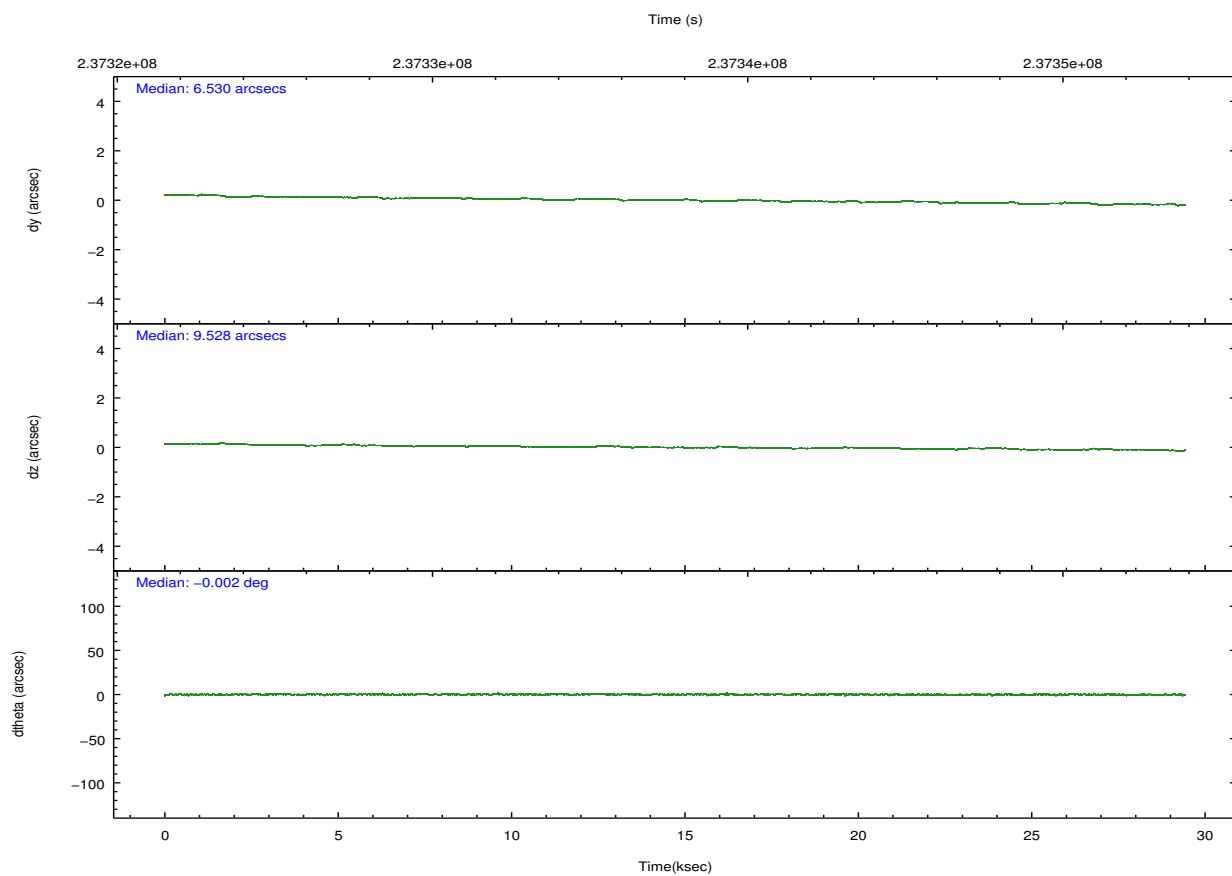
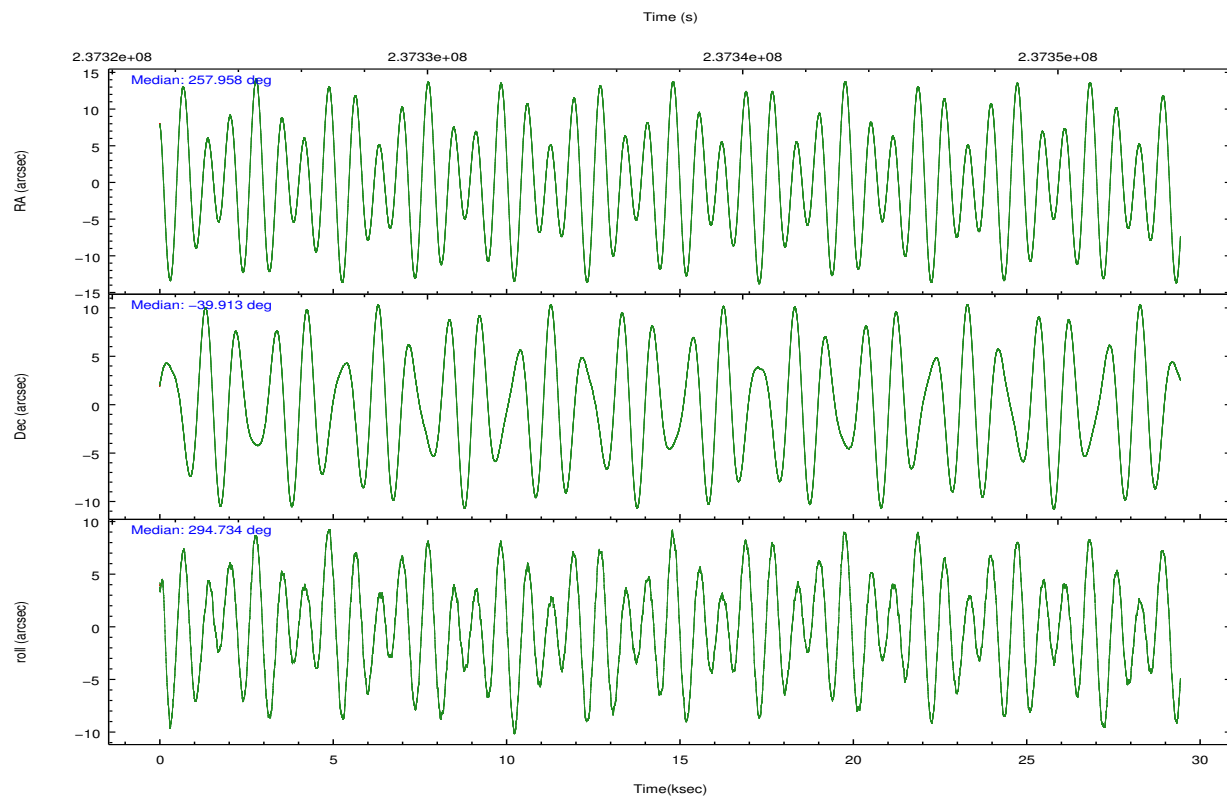
2.1.4 Events

	ccd 0	ccd 1	ccd 2	ccd 3	ccd 6		ccd 0	ccd 1	ccd 2	ccd 3	ccd 6
level 1 events	196515	189435	266856	236210	208473	grade 0 events	23810	19590	57895	44895	23465
rejected events	156529	154363	184702	171480	169655		12%	10%	21%	19%	11%
rejected %	79%	81%	69%	72%	81%	grade 1 events	174	161	422	299	139
							0%	0%	0%	0%	0%
						grade 2 events	6840	5919	11187	8654	6109
							3%	3%	4%	3%	2%
						grade 3 events	2874	2836	4249	3648	2740
							1%	1%	1%	1%	1%
						grade 4 events	2679	2755	4361	3484	2682
							1%	1%	1%	1%	1%
						grade 5 events	5743	6131	5360	6401	6258
							2%	3%	2%	2%	3%
						grade 6 events	4093	4281	5015	4597	4144
							2%	2%	1%	1%	1%
						grade 7 events	150302	147762	178367	164232	162936
							76%	78%	66%	69%	78%

2.2 Compared Parameters

Parameter	Planned	Actual	Parameter	Planned	Actual
Instrument	ACIS	ACIS	Obspar format version number	7	7
Detector	ACIS-01236	ACIS-01236	Obspar file type	PREDICTED	ACTUAL
Grating	NONE	NONE	Obspar update status	NONE	UPDATED
Data mode	VFAINT	VFAINT	Number of optional ACIS chips dropped	0	0
Observation mode	POINTING	POINTING	On-chip summing requested	N	N
[deg] Pointing RA	257.929248	257.9584686106393	Subarray requested	NONE	NONE
[deg] Pointing Dec	-39.897212	-39.91293166581519	Alternating exposures requested	N	N
[deg] Pointing Roll	294.513277	294.7407121066037	[s] Primary exposure time	0.000000	3.1
[mm] SIM focus pos	-0.782348	-0.7809083437167272			
[mm] SIM defocus	0	0.001439871863259334			
[mm] SIM translation stage pos	-233.592463	-233.5874344608287			
[mm] SIM translation stage offset	0	-0.005018542100998502			
[s] Observation start time (MET)	237323160.184000	237322011.81917			
Observation start date	2005-07-09T19:04:56	2005-07-09T18:46:51			
[s] Observation end time (MET)	237352410.184000	237352819.73308			
Observation end date	2005-07-10T03:12:26	2005-07-10T03:20:19			
Read mode	TIMED	TIMED			

2.3 Aspect

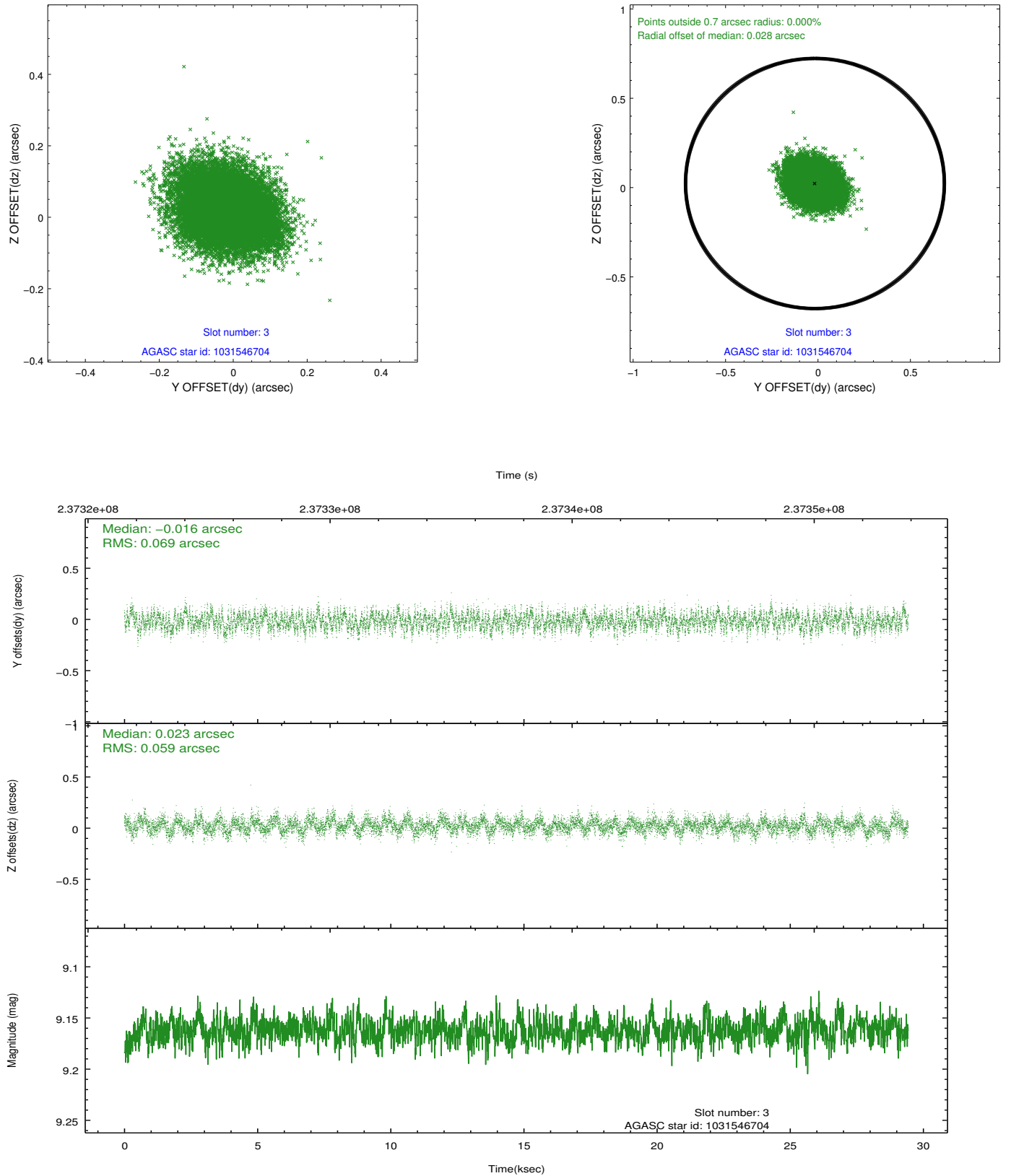


Slot Statistics

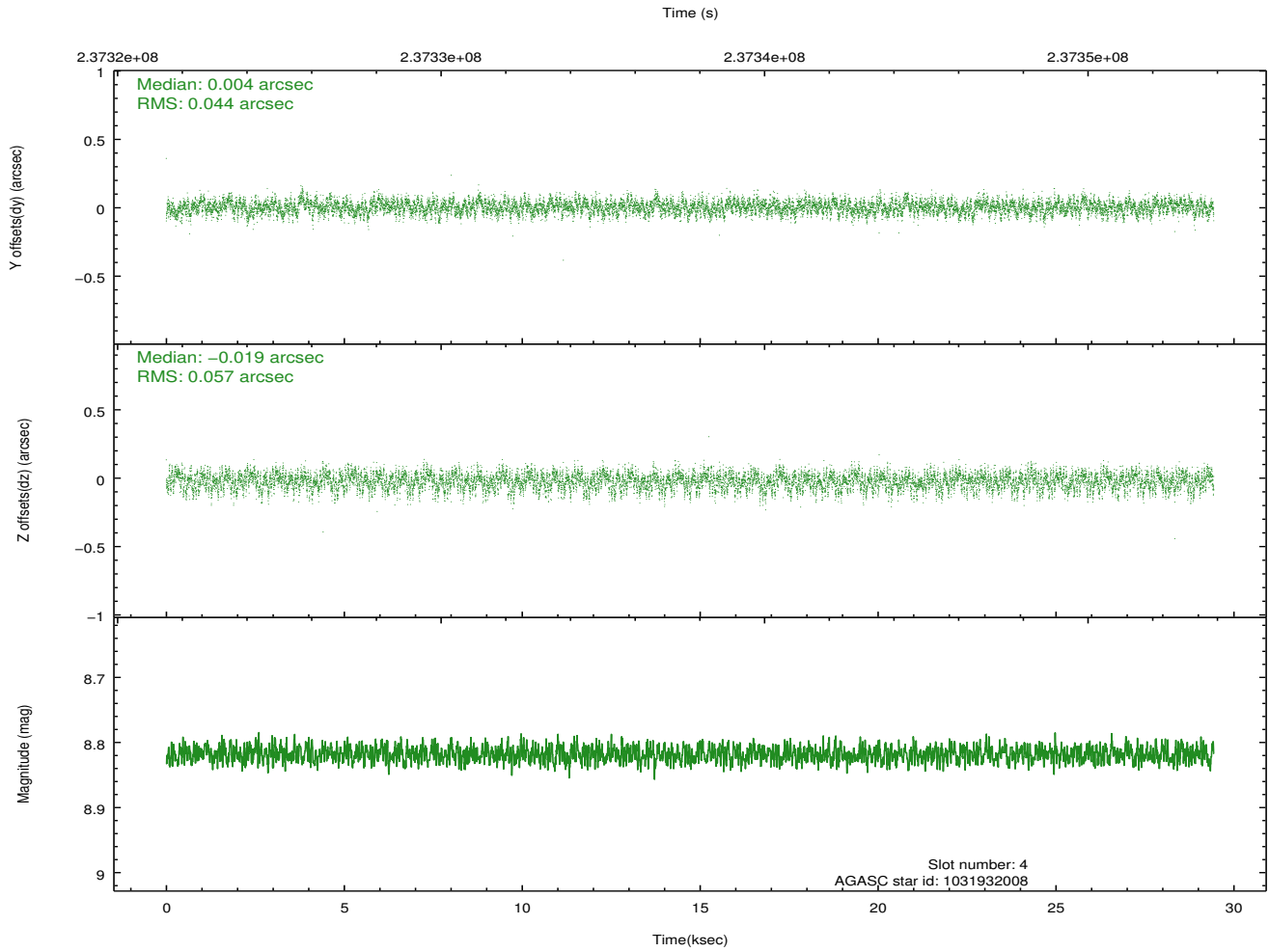
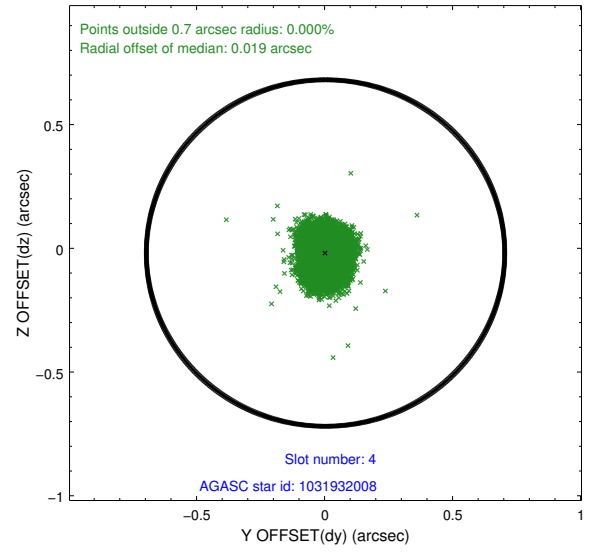
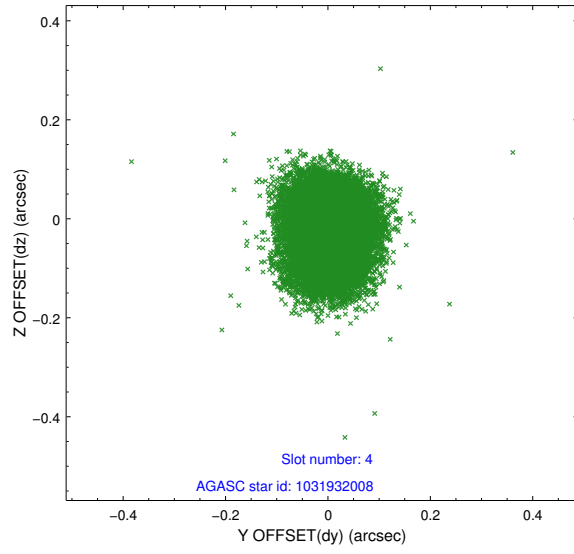
slot	status	id	mag	n_pts	med_dy	med_dz	dr1	dr2	ra	dec	mean_y	mean_z
0	FID	ACIS-I-1	7.25	7181	0.006	0.022	0.007	0.013	0.000000	0.000000	933.17	-832.97
1	FID	ACIS-I-5	7.23	7181	-0.166	0.027	0.006	0.011	0.000000	0.000000	-1815.07	1064.47
2	FID	ACIS-I-6	7.25	7180	0.068	0.022	0.008	0.014	0.000000	0.000000	398.68	1709.07
3	GUIDE	1031546704	9.16	14352	-0.016	0.023	0.097	0.158	258.328569	-39.071177	-2240.32	2248.32
4	GUIDE	1031932008	8.82	14356	0.004	-0.019	0.076	0.123	257.163205	-39.994917	-547.92	-2071.62
5	GUIDE	1031932624	8.31	14355	0.025	-0.069	0.066	0.108	257.431727	-40.221910	500.18	-1730.84
6	GUIDE	1032062224	8.11	14361	-0.021	0.005	0.053	0.085	258.732987	-40.317739	2302.22	1375.41
7	GUIDE	1031931920	9.36	14285	0.010	0.063	0.089	0.147	257.217218	-39.776204	-1205.95	-1614.67

2.4 Star Slots

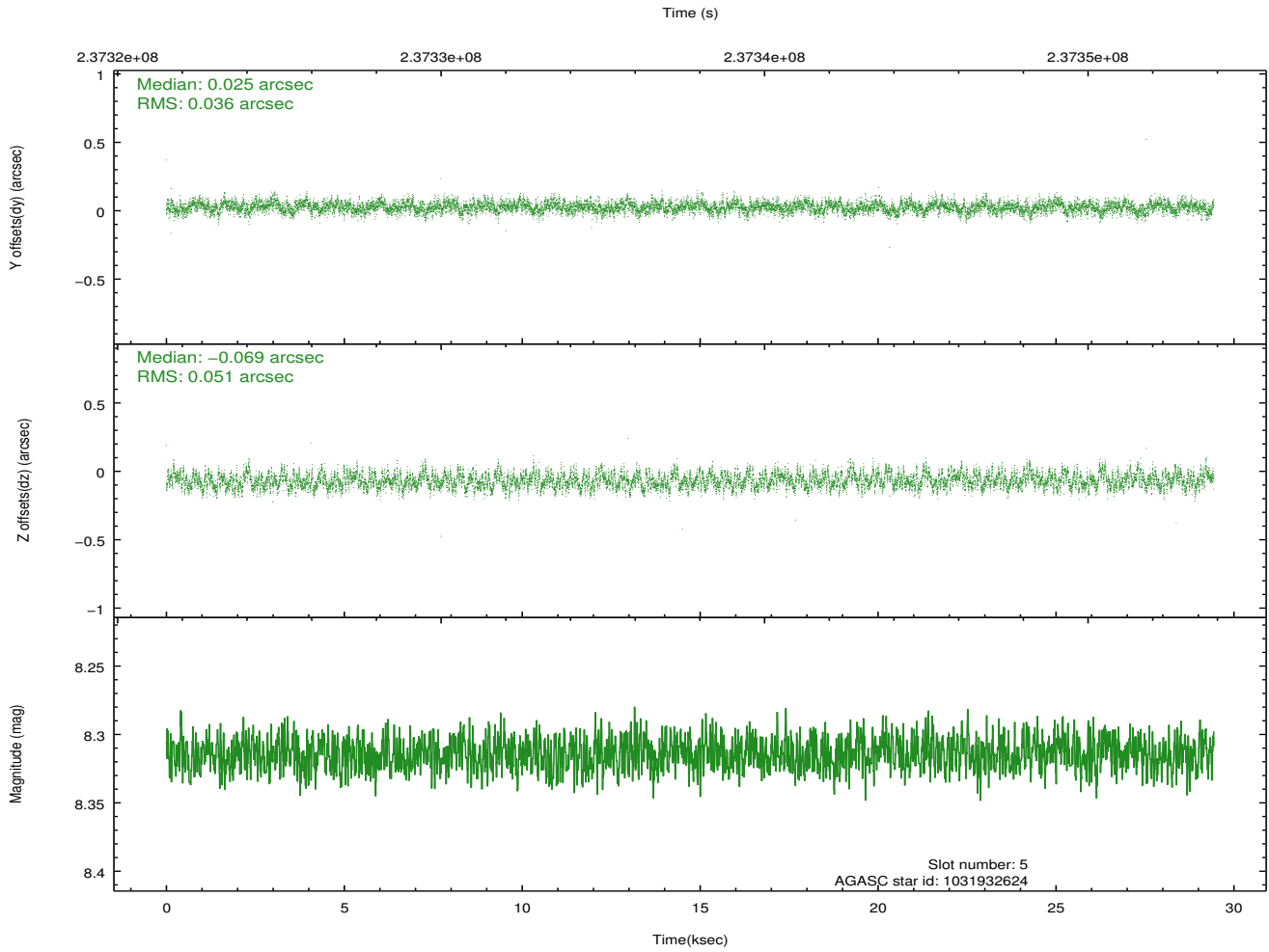
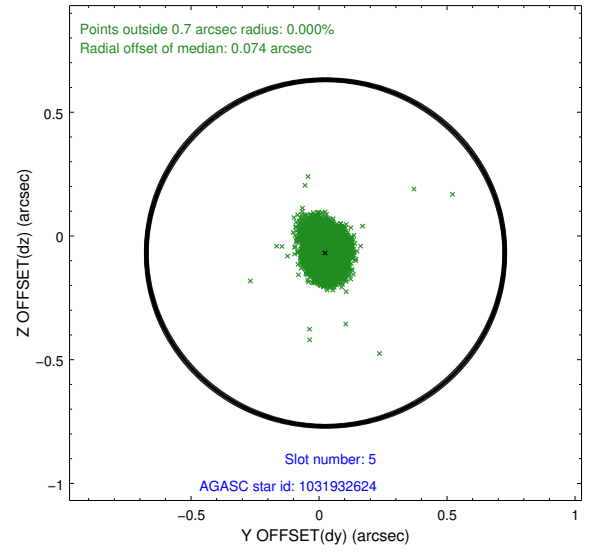
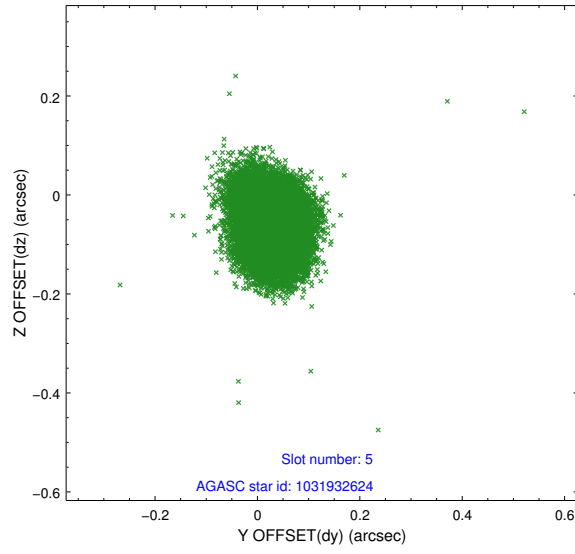
2.4.1 Slot 3



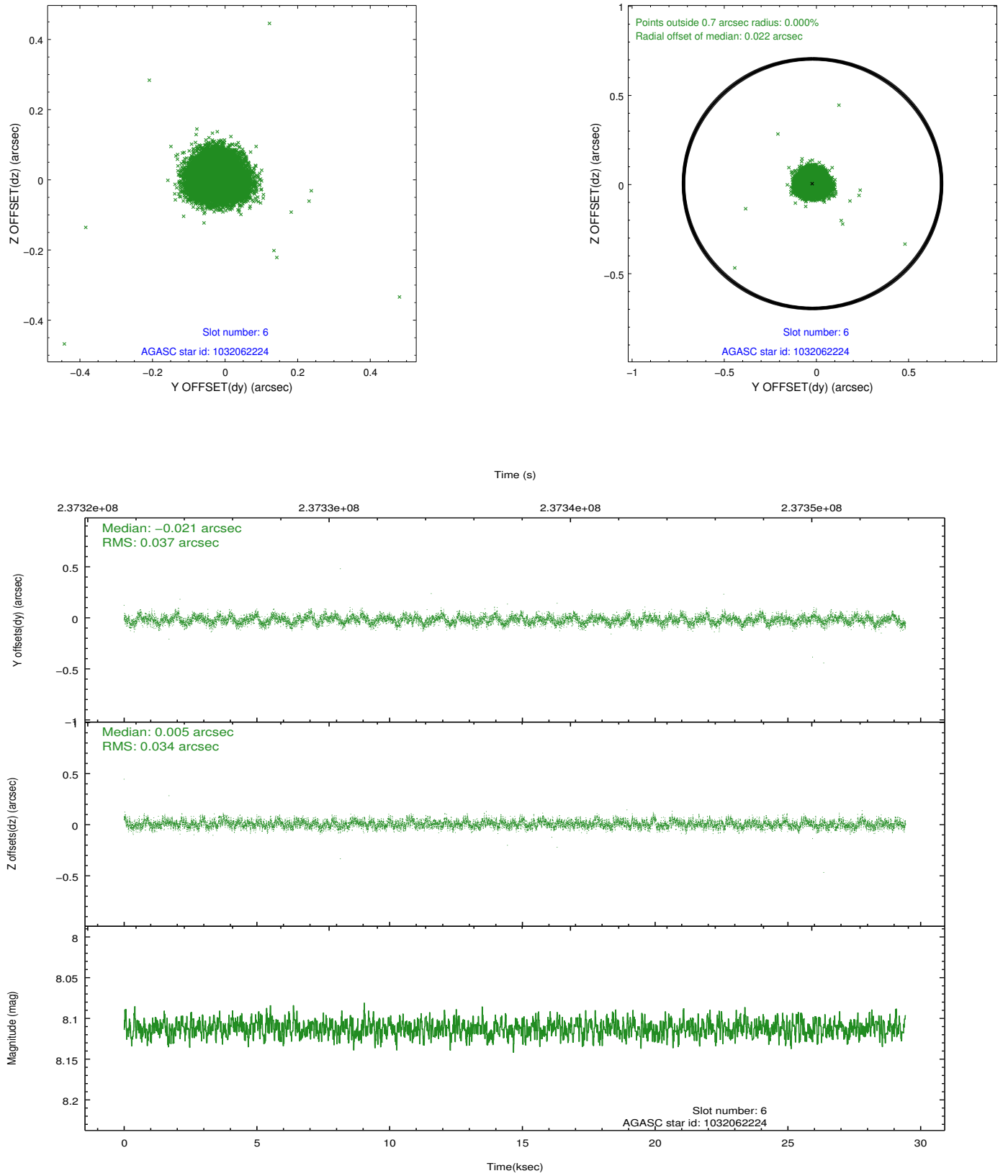
2.4.2 Slot 4



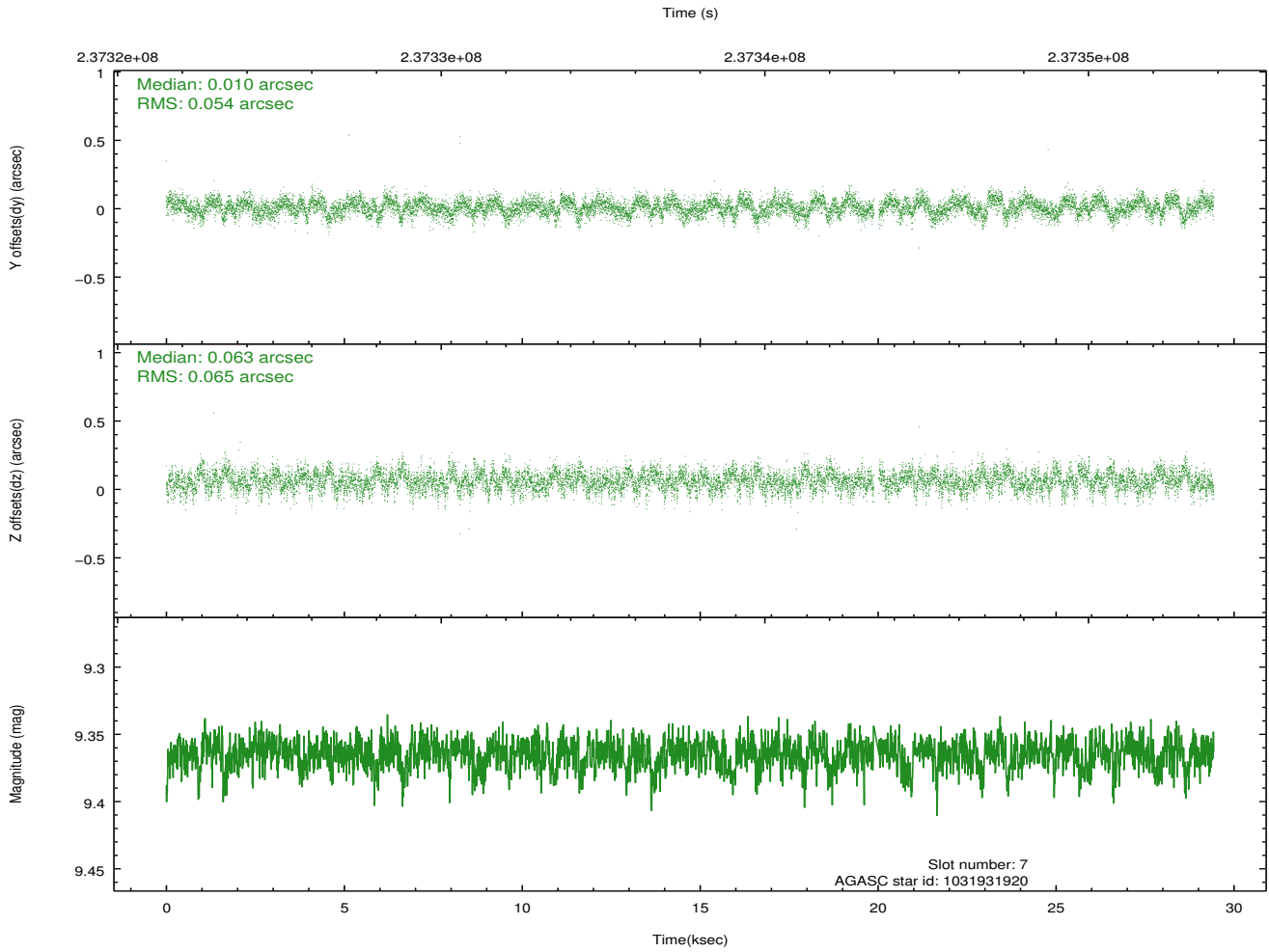
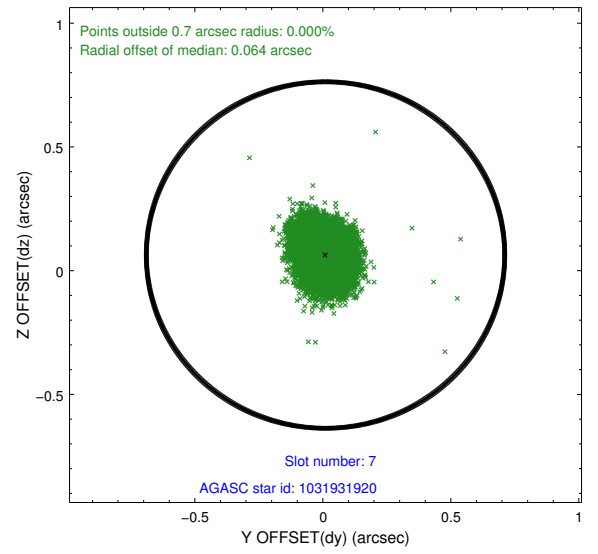
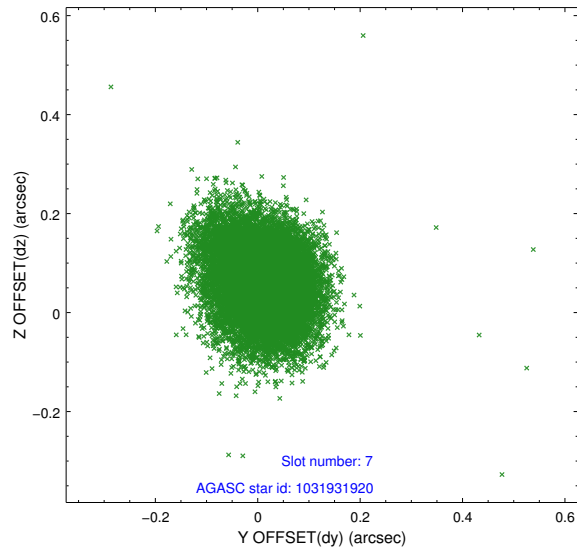
2.4.3 Slot 5



2.4.4 Slot 6

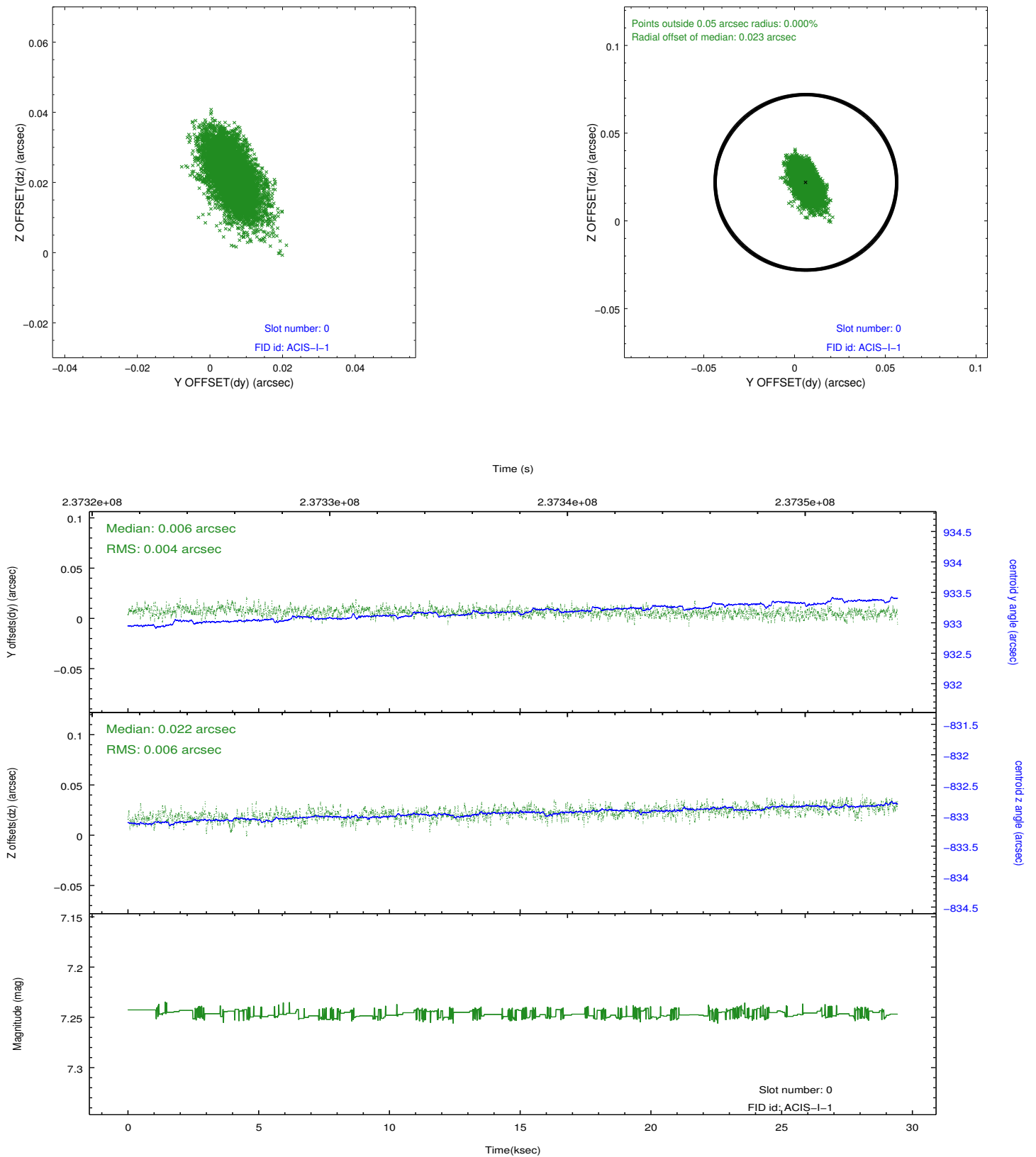


2.4.5 Slot 7

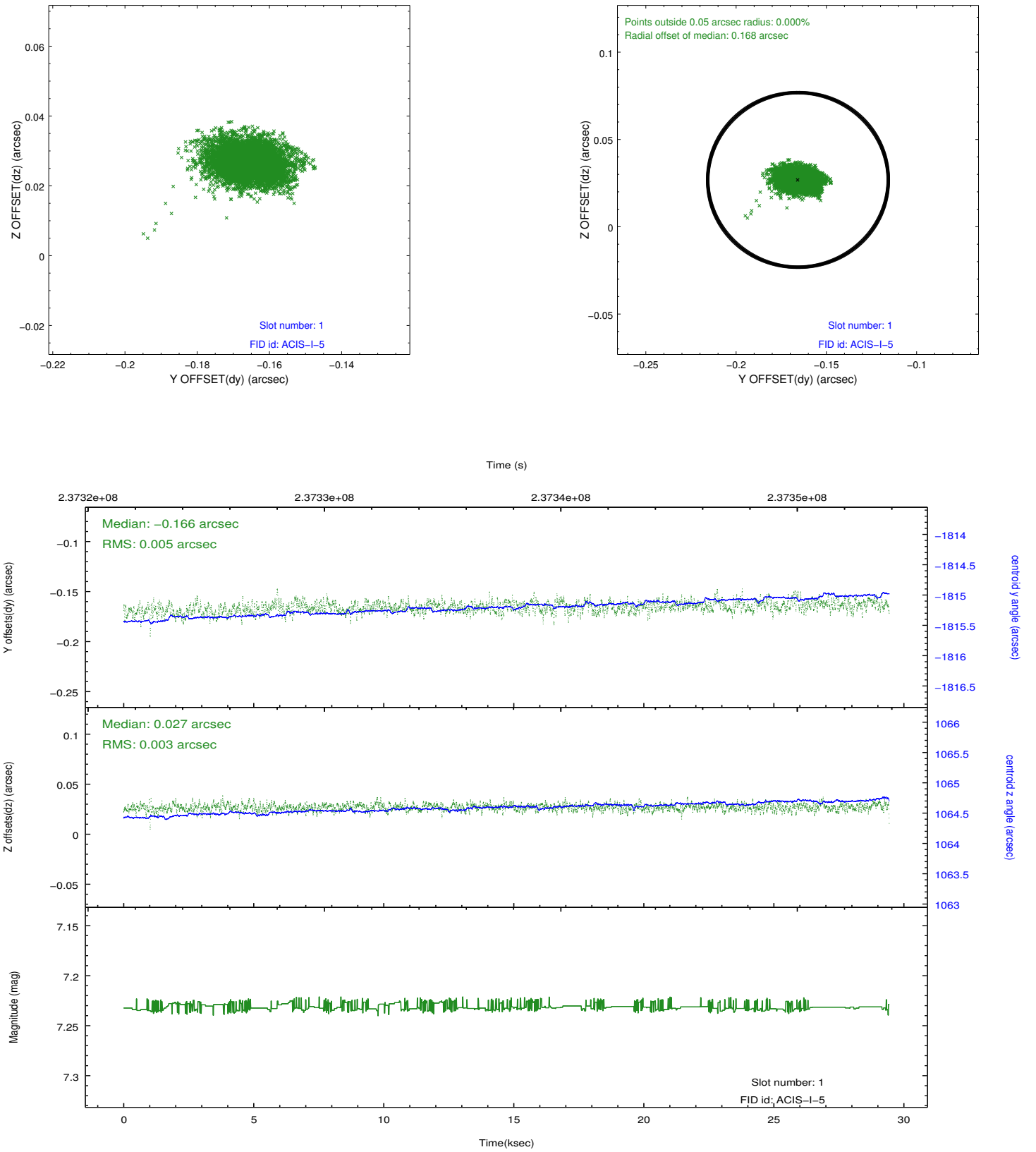


2.5 FID Slots

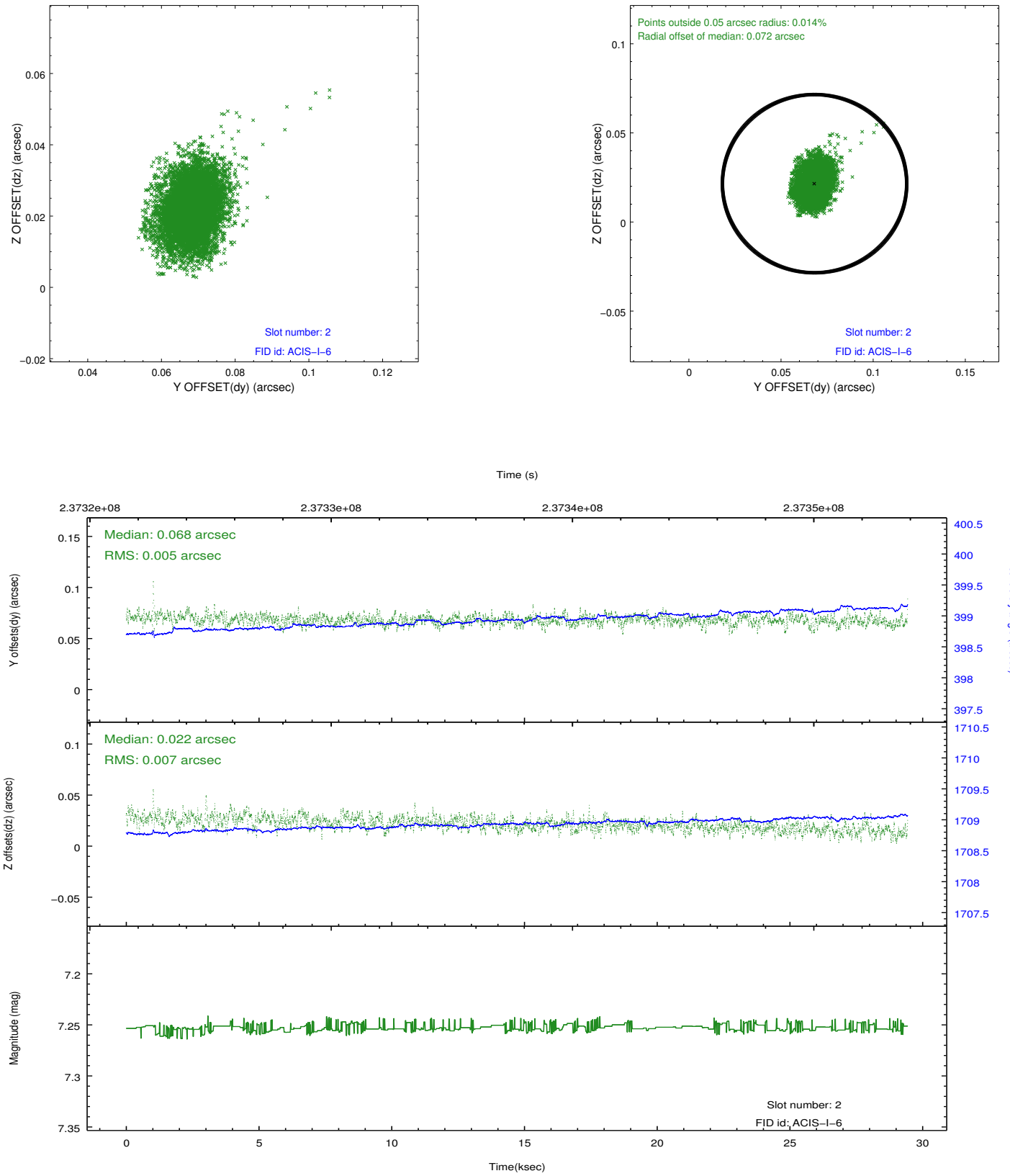
2.5.1 Slot 0



2.5.2 Slot 1



2.5.3 Slot 2



A Summary

A.1 Status

V&V Scientist	Beth Sundheim
V&V Date (YYYY-MM-DD)	2013.01.22
V&V Edition	1
V&V Disposition and Status	OK
V&V Charge Time	29.42825

A.2 Comments