

V&V Reference Report

L2 ASCDS Version : 7.6.7.1

Observation 5561 - L2 Version 002
Chandra X-Ray Center

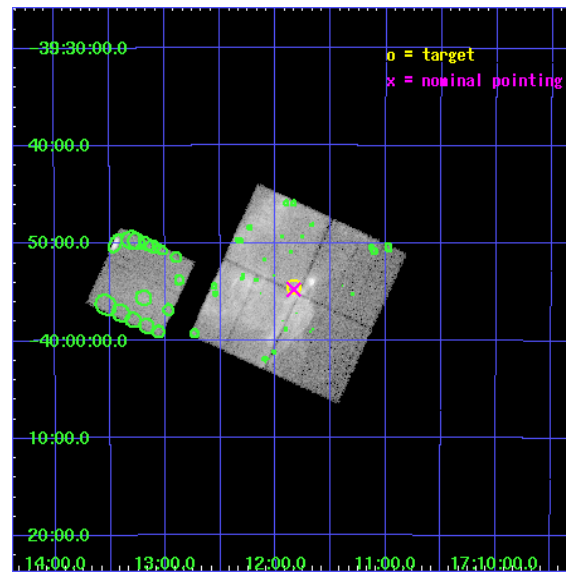
L2 Processing Date : Mar 14 2006

Contents

1	Front	2
2	OBI	3
2.1	OBI	3
2.1.1	Images	3
2.1.2	Bias	3
2.1.3	Parameters	4
2.1.4	Events	4
2.2	Compared Parameters	5
2.3	Aspect	6
2.4	Star Slots	9
2.4.1	Slot 3	9
2.4.2	Slot 4	10
2.4.3	Slot 5	11
2.4.4	Slot 6	12
2.4.5	Slot 7	13
2.5	FID Slots	14
2.5.1	Slot 0	14
2.5.2	Slot 1	15
2.5.3	Slot 2	16
3	Point Sources	17
A	Summary	18
A.1	Status	18
A.2	Comments	18

1 Front

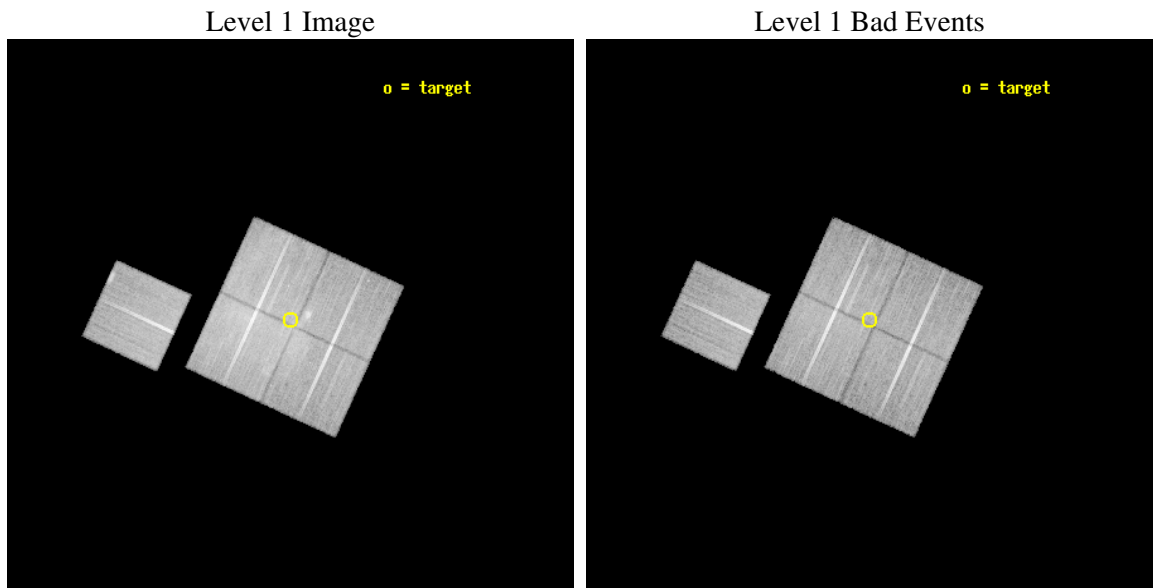
seq_num	500550
obs_id	5561
title	Searching for spectral and morphological changes of X-ray structures in SNR RX J1713.7-3946
observer	Dr. Yasunobu Uchiyama
object	RX J1713.7-3946 SW
dtcycle	0
cycle	P
ra_targ	257.958292
dec_targ	-39.9083
ra_nom	257.95845357404
dec_nom	-39.912906395555
roll_nom	294.74070245205
revision	2
ontime	29428.258963168
livetime	29043.757095045
ontime0	29431.399943411
ontime1	29425.117972881
ontime2	29425.117962897
ontime3	29428.258963168
ontime6	29431.399943411
l2events	234449



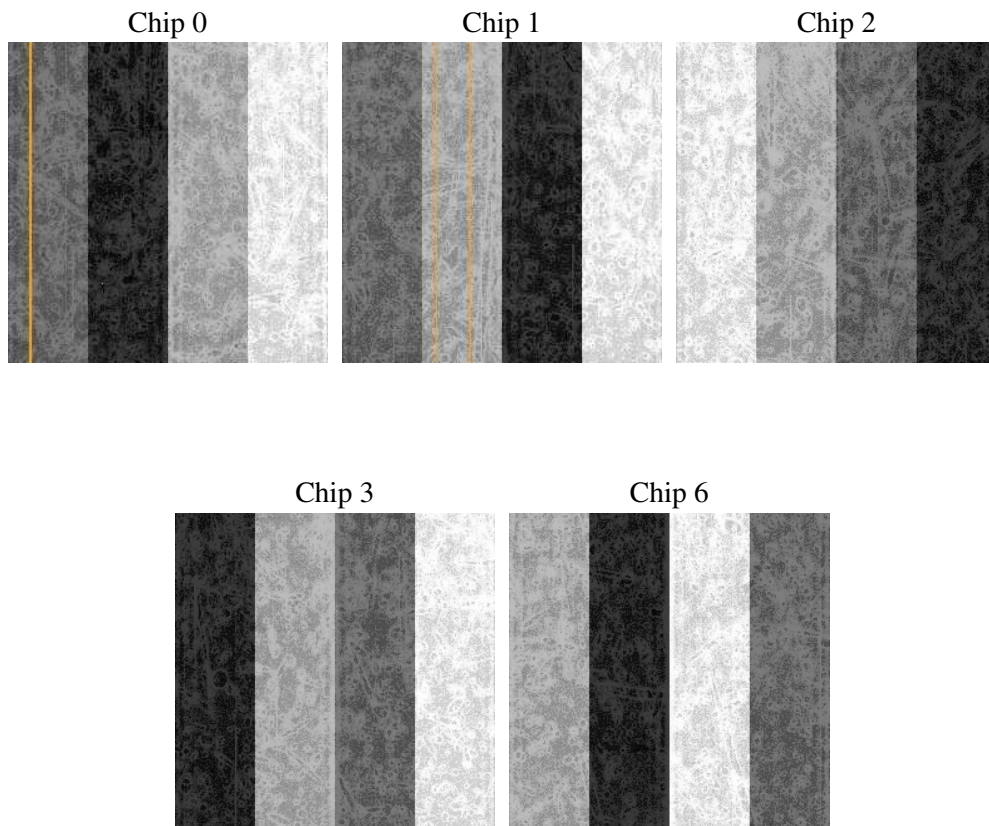
2 OBI

2.1 OBI

2.1.1 Images



2.1.2 Bias



2.1.3 Parameters

obi_num	0
ascdsver	7.6.7.1
caldbver	3.2.1
date	2006-03-14T12:00:09
revision	2

sched_exp_time	29250.000000
ontime	29739.116770476
ontime0	29745.398750871
ontime1	29739.116780341
ontime2	29739.116770357
ontime3	29739.116770476
ontime6	29745.398750871
l1events	1097489

2.1.4 Events

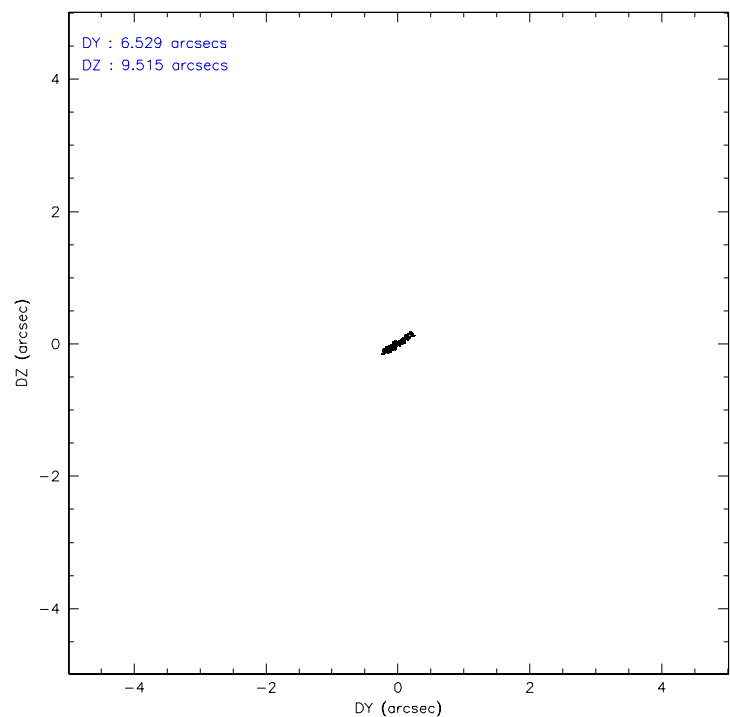
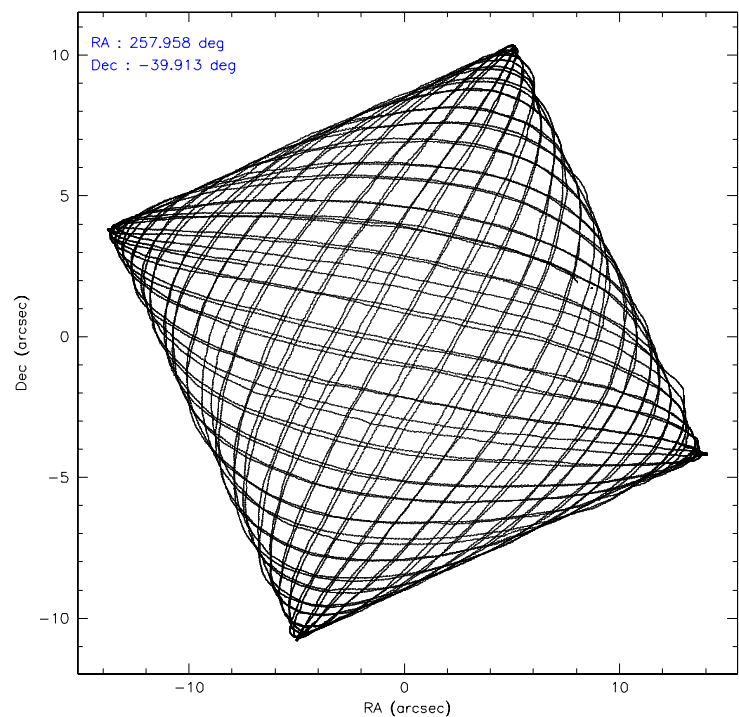
	ccd 0	ccd 1	ccd 2	ccd 3	ccd 6
level 1 events	196515	189435	266856	236210	208473
rejected events	156533	154366	184708	171486	169655
rejected %	79%	81%	69%	72%	81%

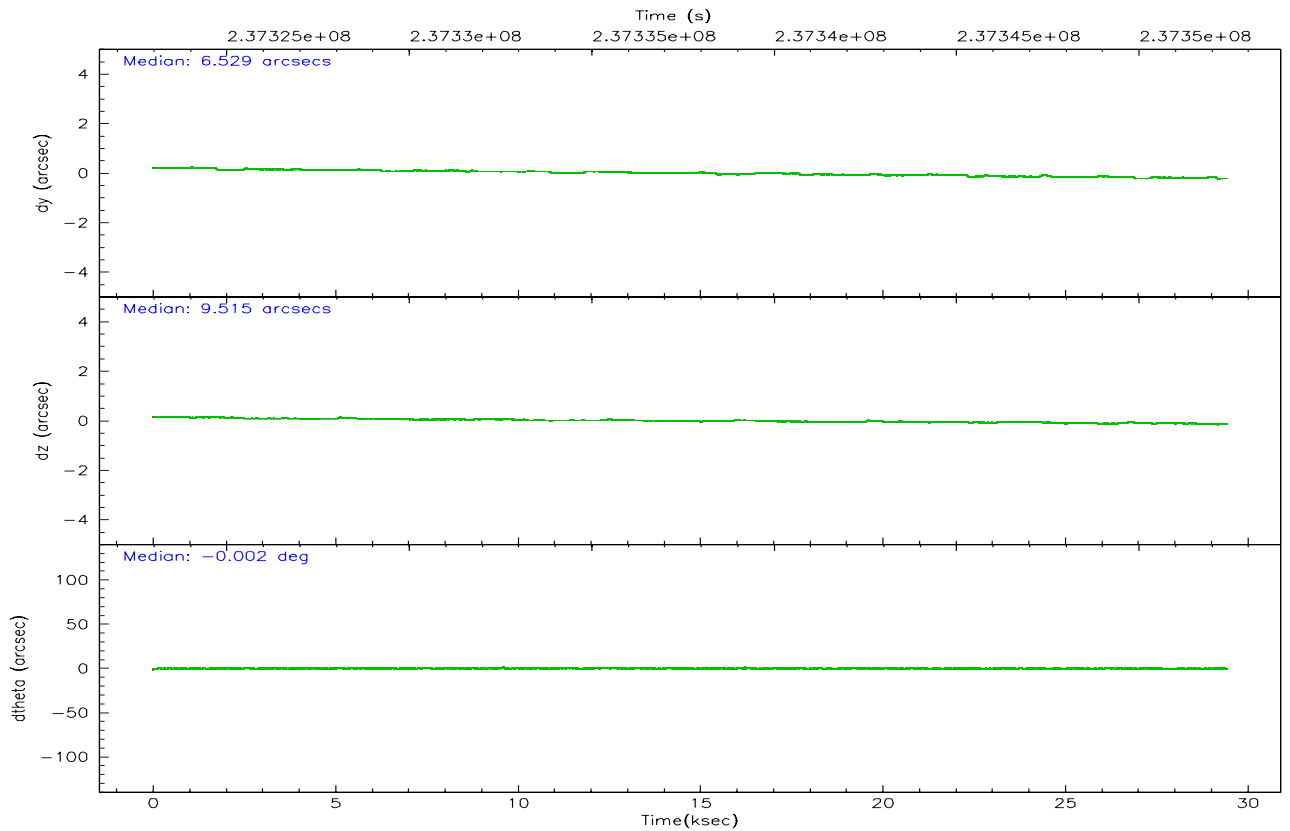
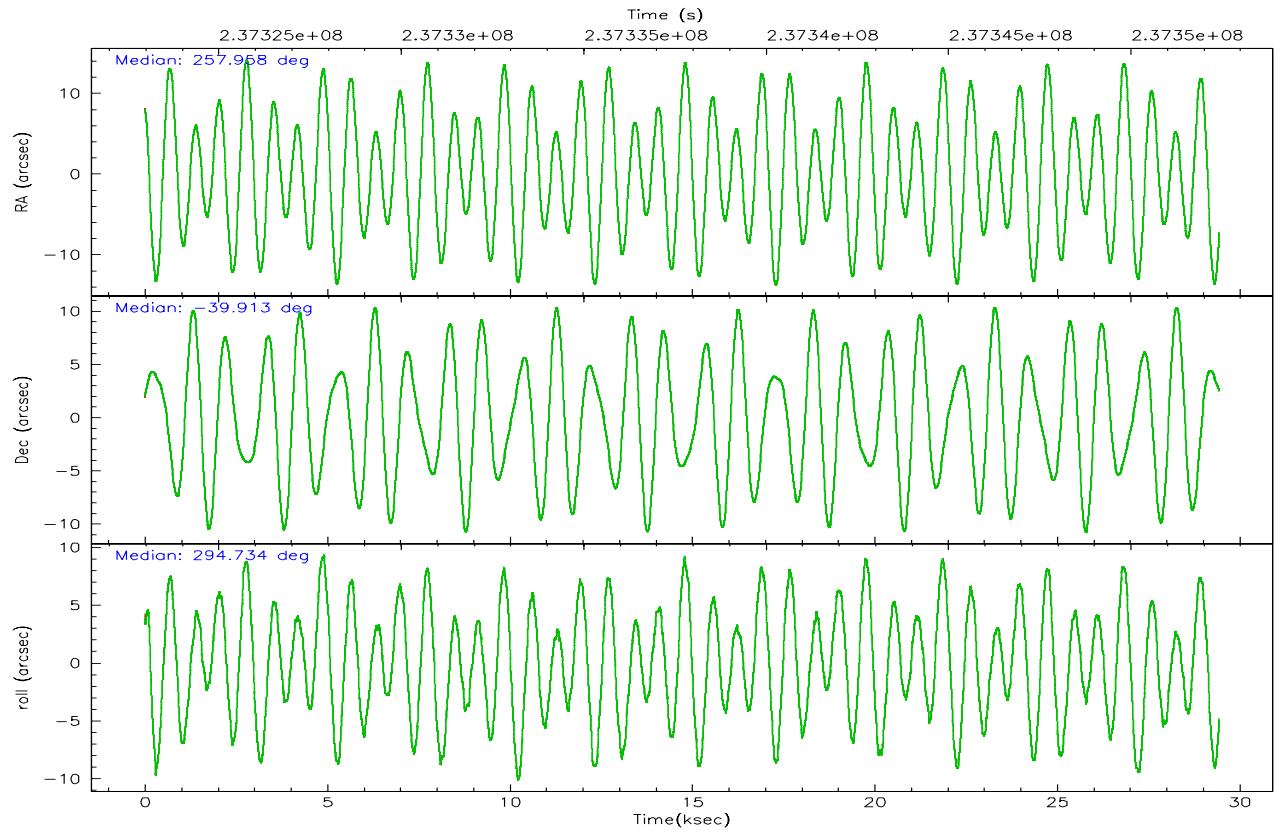
	ccd 0	ccd 1	ccd 2	ccd 3	ccd 6
grade 0 events	23810	19589	57895	44895	23465
	12%	10%	21%	19%	11%
grade 1 events	174	161	420	299	138
	0%	0%	0%	0%	0%
grade 2 events	6840	5920	11187	8654	6109
	3%	3%	4%	3%	2%
grade 3 events	2874	2836	4249	3648	2738
	1%	1%	1%	1%	1%
grade 4 events	2679	2755	4359	3484	2682
	1%	1%	1%	1%	1%
grade 5 events	5742	6130	5360	6397	6256
	2%	3%	2%	2%	3%
grade 6 events	4092	4280	5018	4597	4148
	2%	2%	1%	1%	1%
grade 7 events	150304	147764	178368	164236	162937
	76%	78%	66%	69%	78%

2.2 Compared Parameters

Parameter	Planned	Actual	Parameter	Planned	Actual
Instrument	ACIS	ACIS	Obspar format version number	6	6
Detector	ACIS-01236	ACIS-01236	Obspar file type	PREDICTED	ACTUAL
Grating	NONE	NONE	Obspar update status	NONE	UPDATED
Data mode	VFAINT	VFAINT	On-chip summing requested	N	N
Observation mode	POINTING	POINTING	Subarray requested	NONE	NONE
Pointing RA	257.929248	257.958453574036	Alternating exposures requested	N	N
Pointing Dec	-39.897212	-39.91290639555545	Primary exposure time	0.000000	3.1
Pointing Roll	294.513277	294.7407024520546			
SIM focus pos (mm)	-0.782348	-0.7809083437167272			
SIM defocus (mm)	0	0.001439871863259334			
SIM translation stage pos (mm)	-233.592463	-233.5874344608287			
SIM translation stage offset (mm)	0	-0.005018542100998502			
Observation start time	237323160.184000	237322011.81917			
Observation start date	2005-07-09T19:04:56	2005-07-09T18:46:51			
Observation end time	237352410.184000	237352819.73308			
Observation end date	2005-07-10T03:12:26	2005-07-10T03:20:19			
Read mode	TIMED	TIMED			

2.3 Aspect



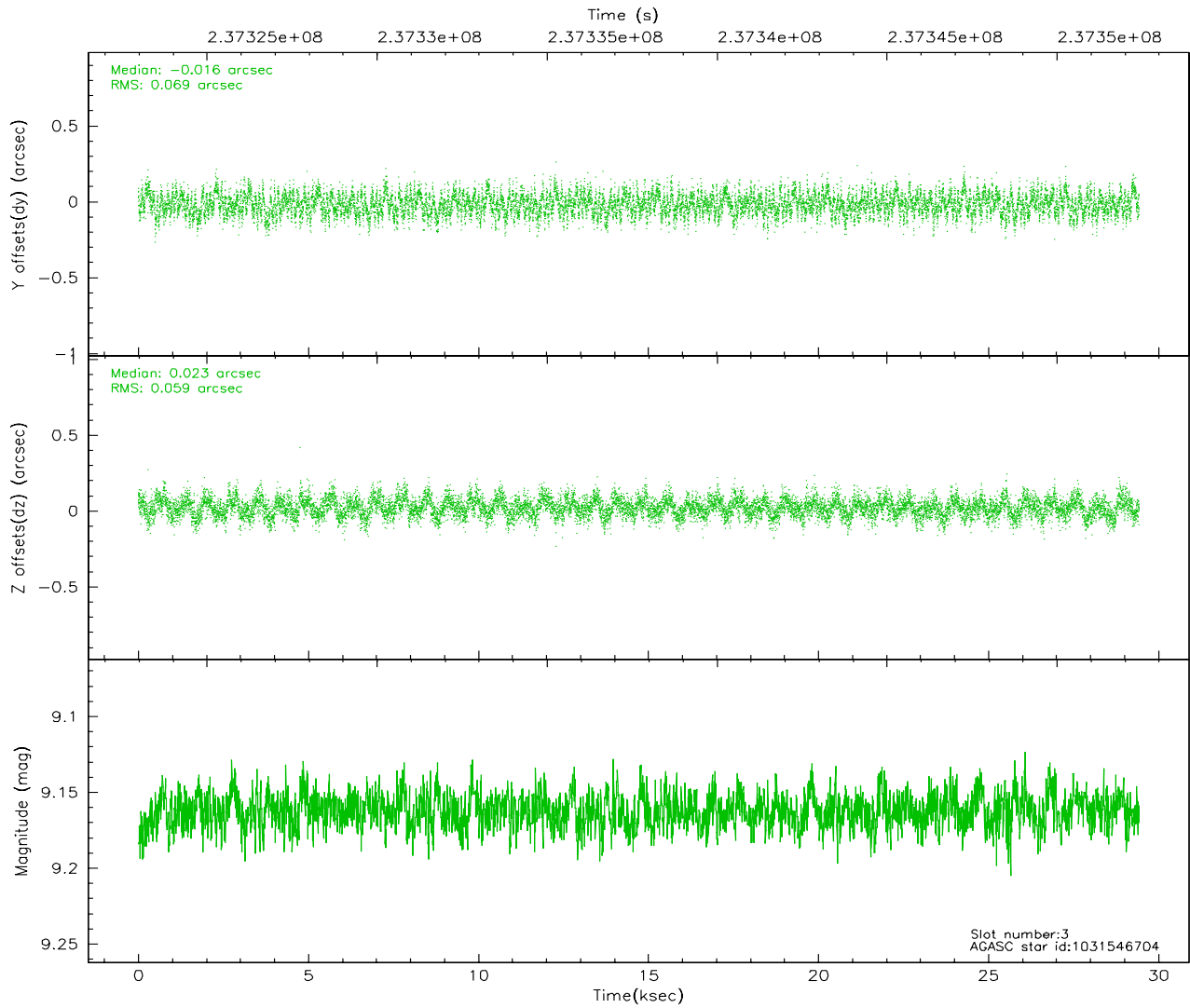
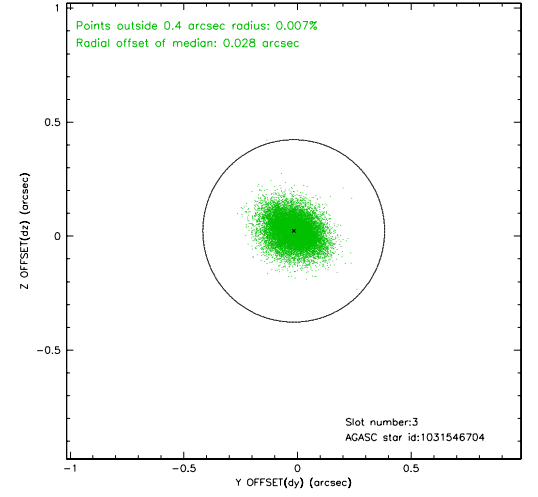
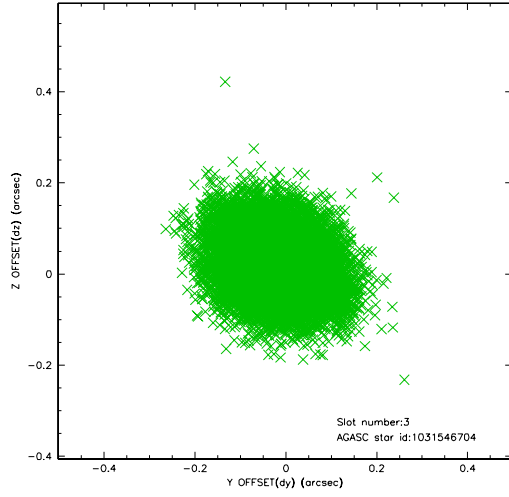


Slot Statistics

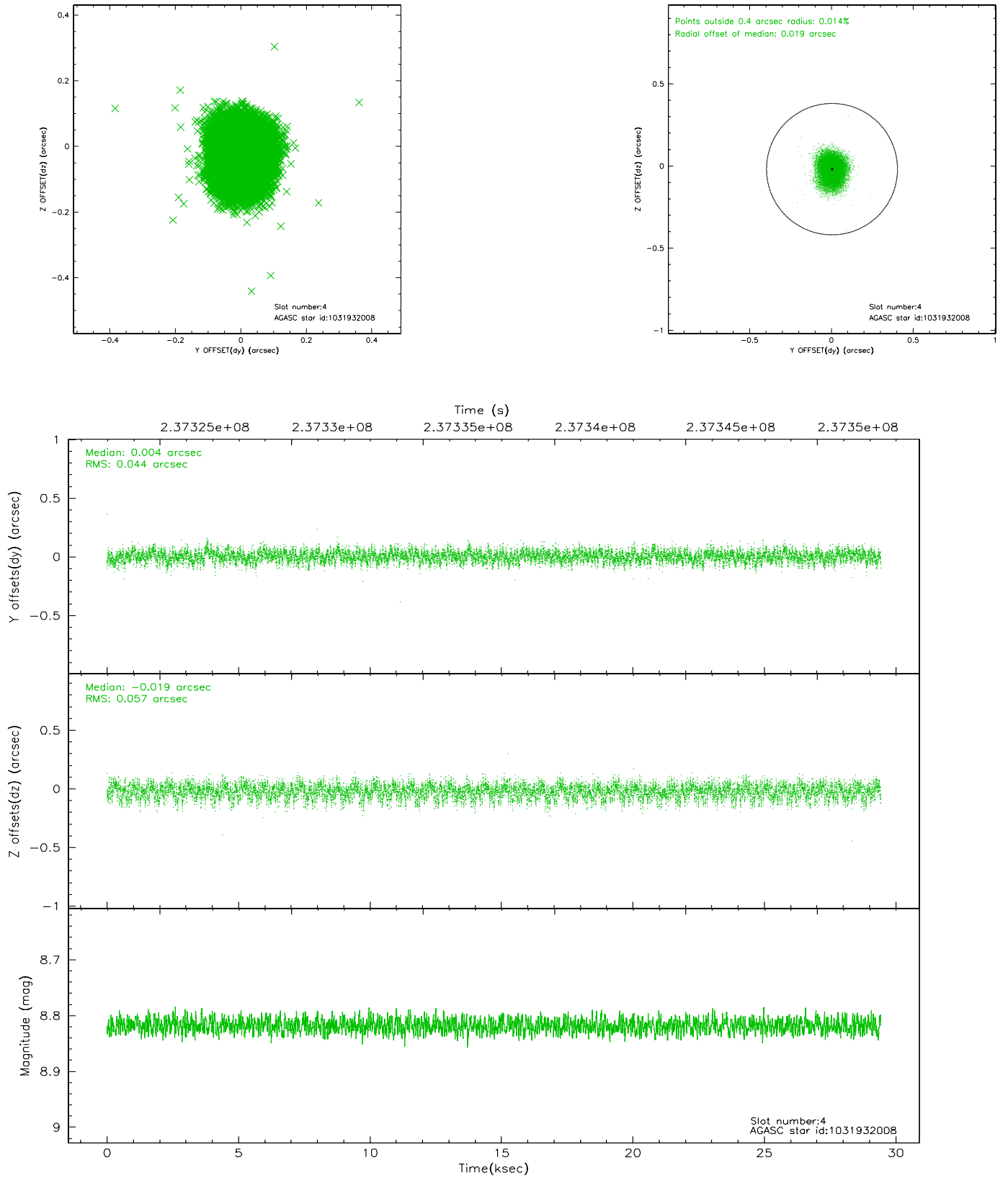
slot	status	id	mag	n_pts	med_dy	med_dz	dr1	dr2	ra	dec	mean_y	mean_z
0	FID	ACIS-I-1	7.25	7181	-0.014	0.049	0.007	0.013	0.000000	0.000000	933.16	-832.92
1	FID	ACIS-I-5	7.23	7181	-0.135	0.019	0.006	0.011	0.000000	0.000000	-1815.04	1064.48
2	FID	ACIS-I-6	7.25	7180	0.058	0.002	0.008	0.014	0.000000	0.000000	398.67	1709.07
3	GUIDE	1031546704	9.16	14352	-0.016	0.023	0.097	0.158	258.328569	-39.071177	-2240.32	2248.32
4	GUIDE	1031932008	8.82	14356	0.004	-0.019	0.076	0.123	257.163205	-39.994917	-547.92	-2071.62
5	GUIDE	1031932624	8.31	14355	0.025	-0.069	0.066	0.108	257.431727	-40.221910	500.18	-1730.84
6	GUIDE	1032062224	8.11	14361	-0.021	0.005	0.053	0.085	258.732987	-40.317739	2302.22	1375.41
7	GUIDE	1031931920	9.36	14282	0.010	0.063	0.089	0.147	257.217218	-39.776204	-1205.95	-1614.67

2.4 Star Slots

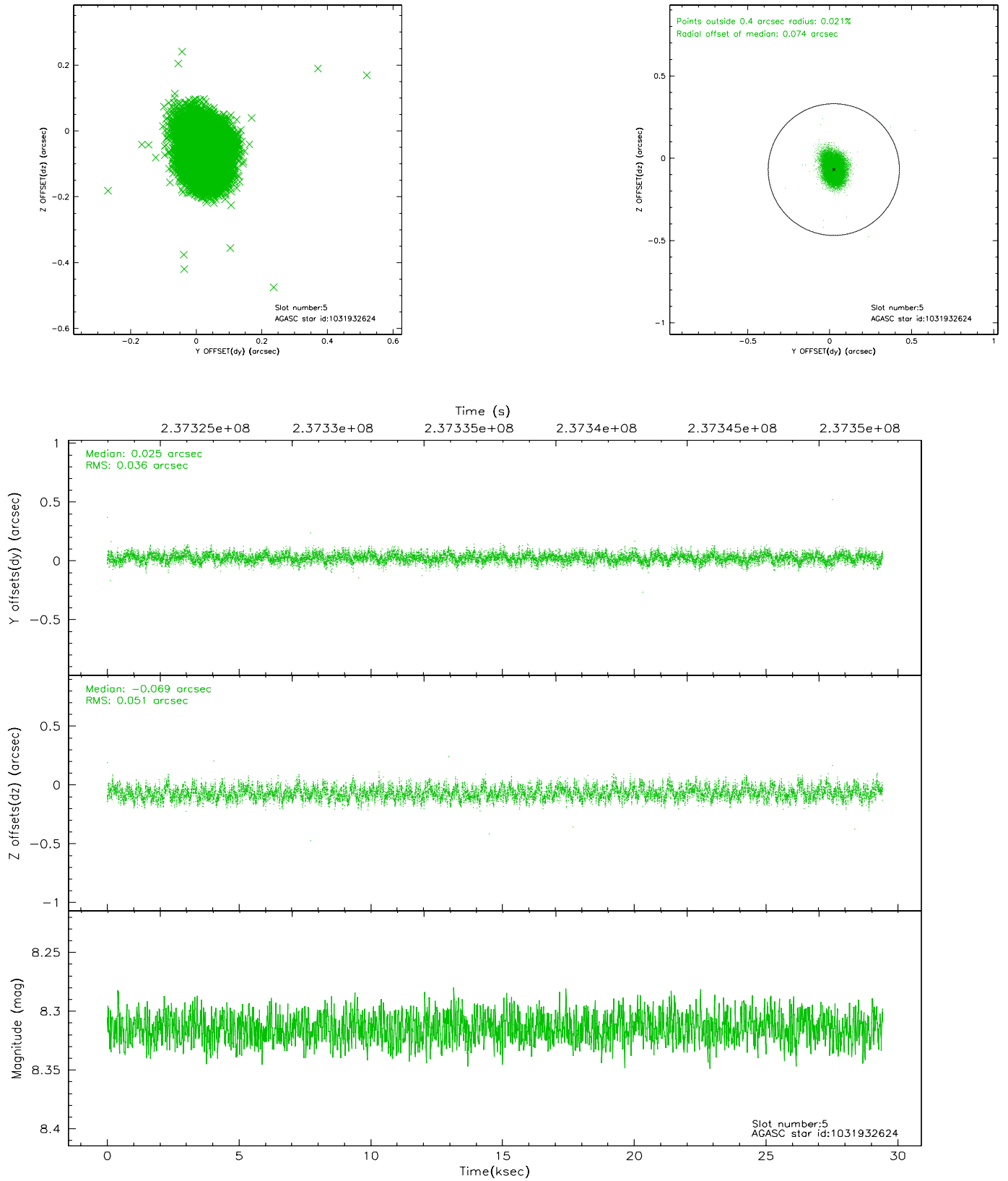
2.4.1 Slot 3



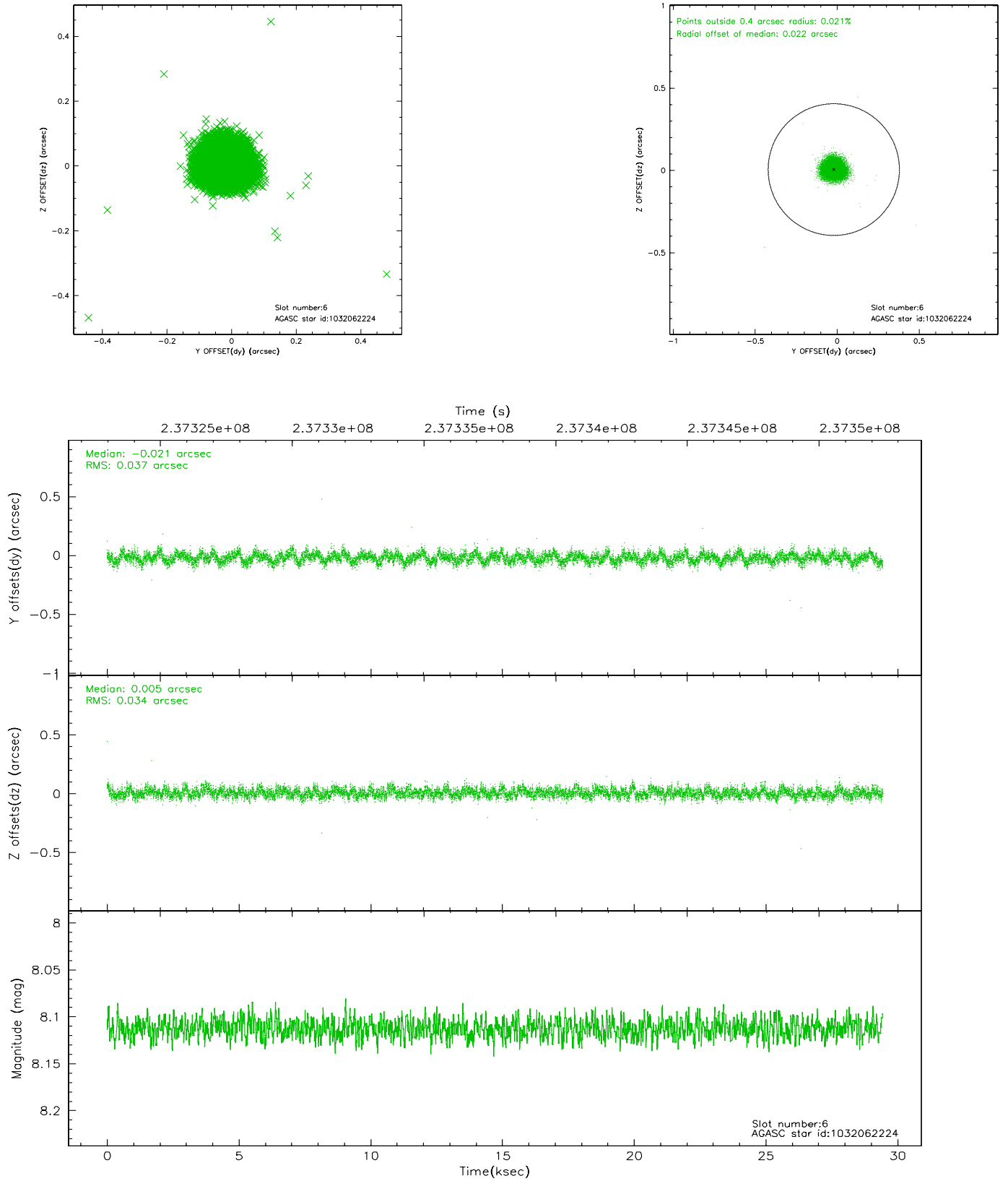
2.4.2 Slot 4



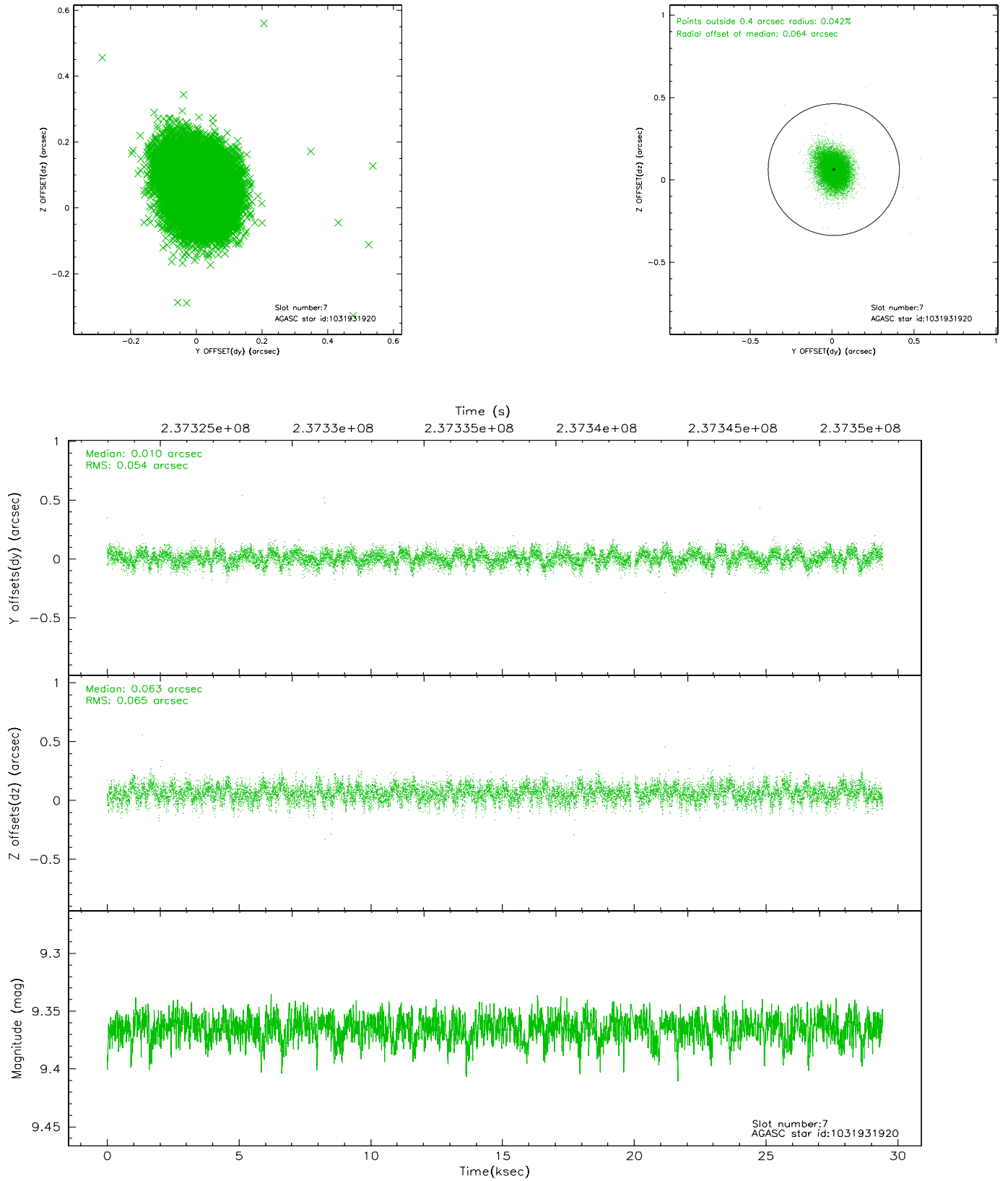
2.4.3 Slot 5



2.4.4 Slot 6

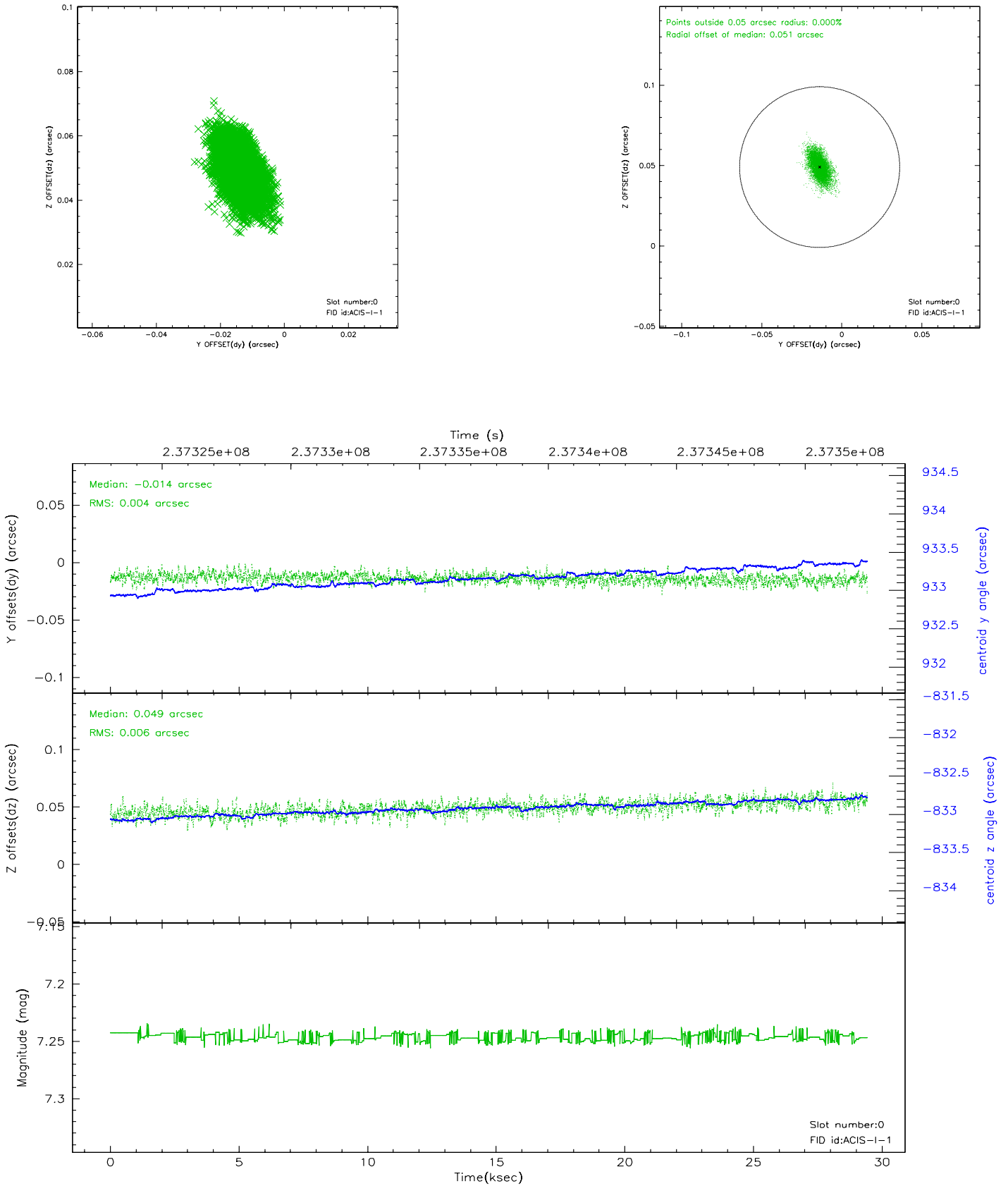


2.4.5 Slot 7

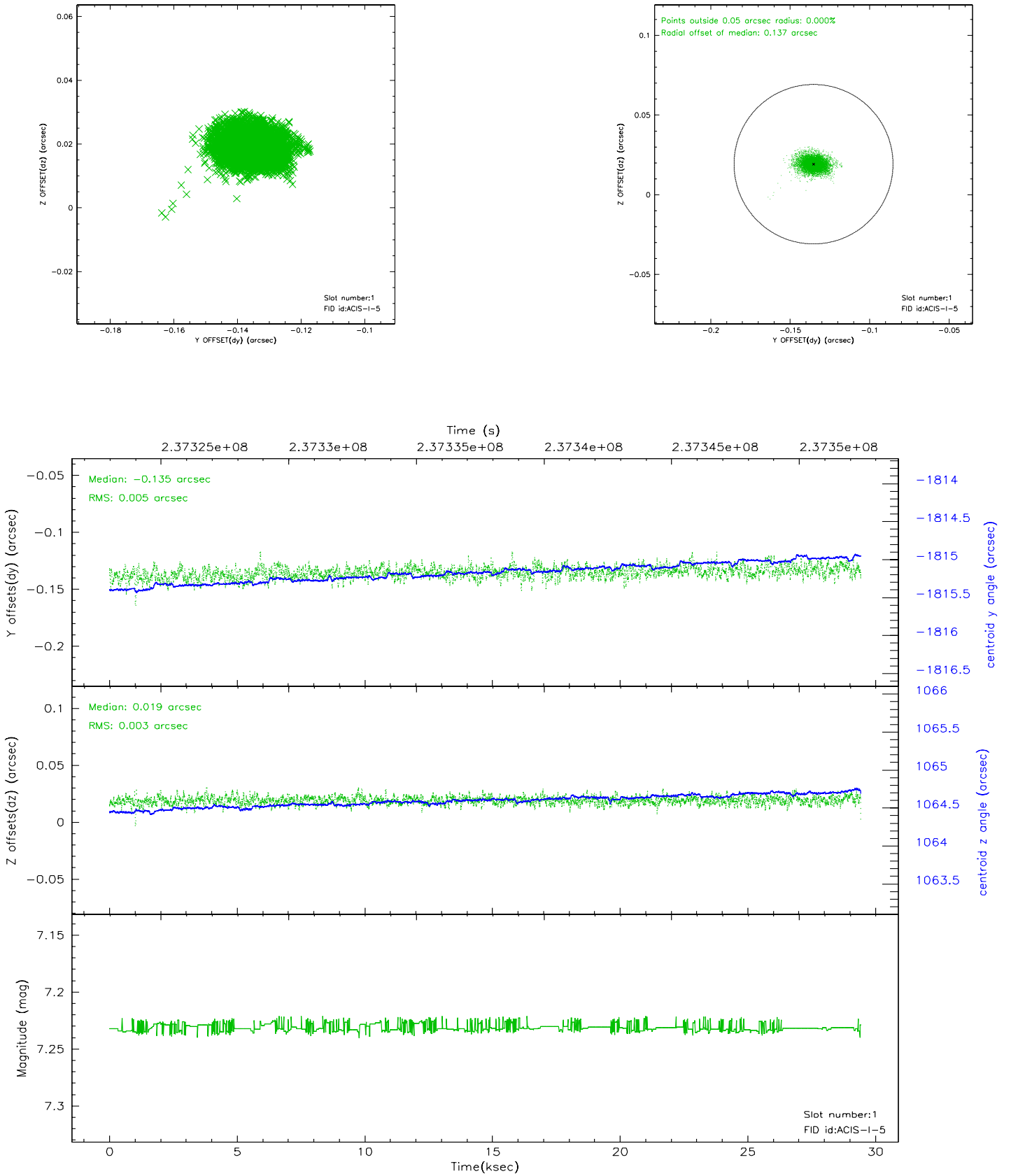


2.5 FID Slots

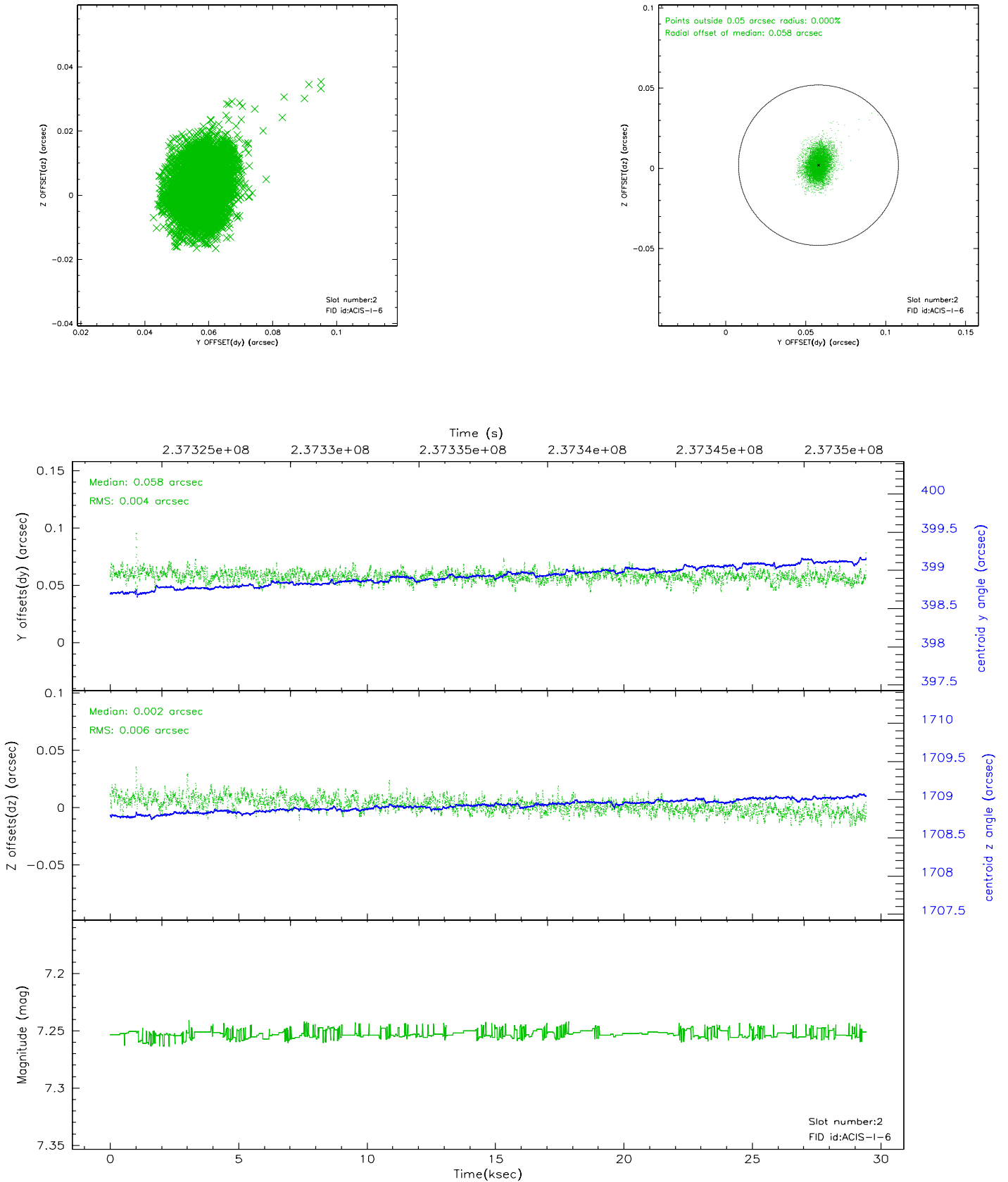
2.5.1 Slot 0



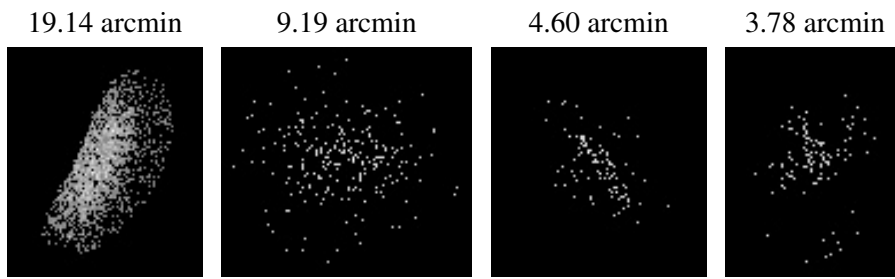
2.5.2 Slot 1



2.5.3 Slot 2



3 Point Sources



A Summary

A.1 Status

V&V Scientist	Beth Sundheim
V&V Date (YYYY-MM-DD)	2006.03.14
V&V Edition	1
V&V Disposition and Status	OK
V&V Charge Time	29.42825

A.2 Comments