

V&V Reference Report

L2 ASCDS Version : 7.6.7.1

Observation 5560 - L2 Version 002
Chandra X-Ray Center

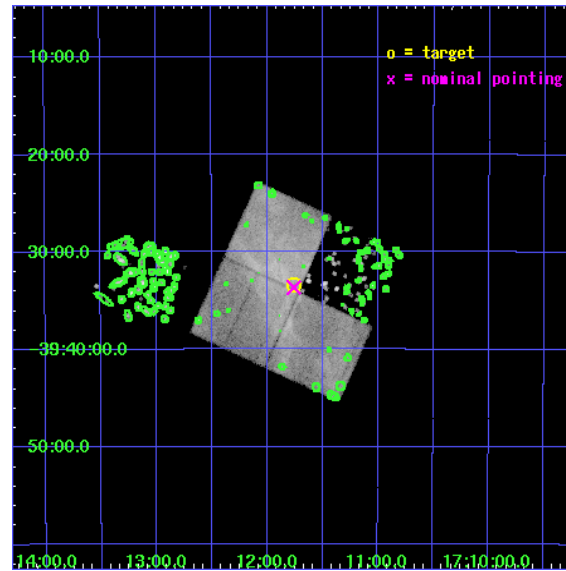
L2 Processing Date : Mar 21 2006

Contents

1	Front	2
2	OBI	3
2.1	OBI	3
2.1.1	Images	3
2.1.2	Bias	3
2.1.3	Parameters	4
2.1.4	Events	4
2.2	Compared Parameters	5
2.3	Aspect	6
2.4	Star Slots	9
2.4.1	Slot 3	9
2.4.2	Slot 4	10
2.4.3	Slot 5	11
2.4.4	Slot 6	12
2.4.5	Slot 7	13
2.5	FID Slots	14
2.5.1	Slot 0	14
2.5.2	Slot 1	15
2.5.3	Slot 2	16
3	Point Sources	17
A	Summary	18
A.1	Status	18
A.2	Comments	18

1 Front

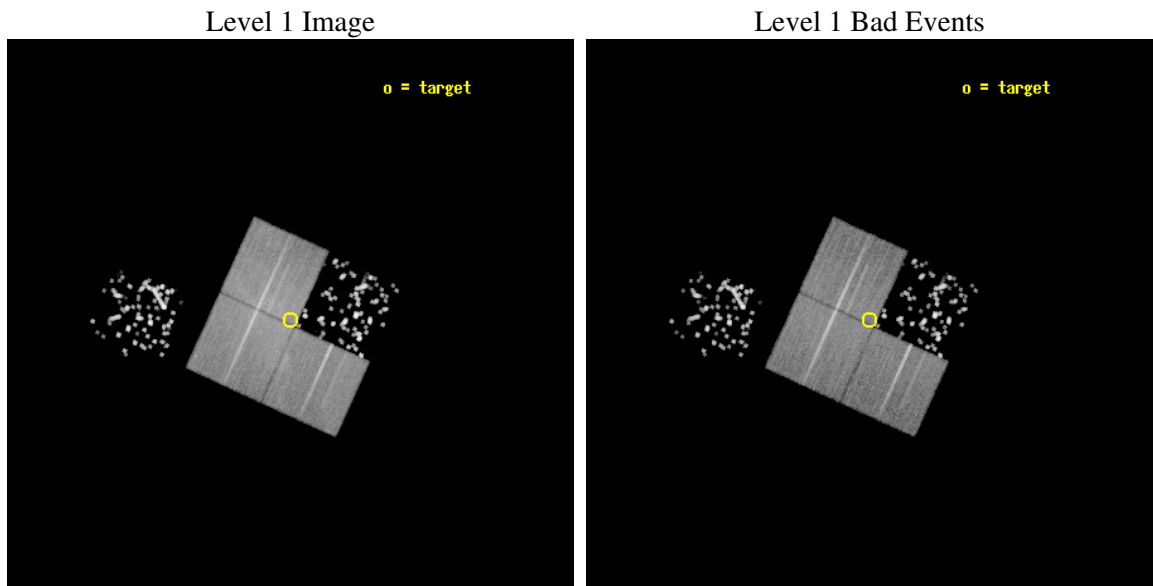
seq_num	500549
obs_id	5560
title	Searching for spectral and morphological changes of X-ray structures in SNR RX J1713.7-3946
observer	Dr. Yasunobu Uchiyama
object	RX J1713.7-3946 NW
dtcycle	0
cycle	P
ra_targ	257.939583
dec_targ	-39.556444
ra_nom	257.93975219891
dec_nom	-39.561087237051
roll_nom	294.63920390184
revision	2
ontime	29412.717973024
livetime	29028.419159378
ontime0	29418.999943435
ontime1	29418.999943435
ontime2	29415.858953178
ontime3	29412.717973024
ontime6	29418.999943435
l2events	243100



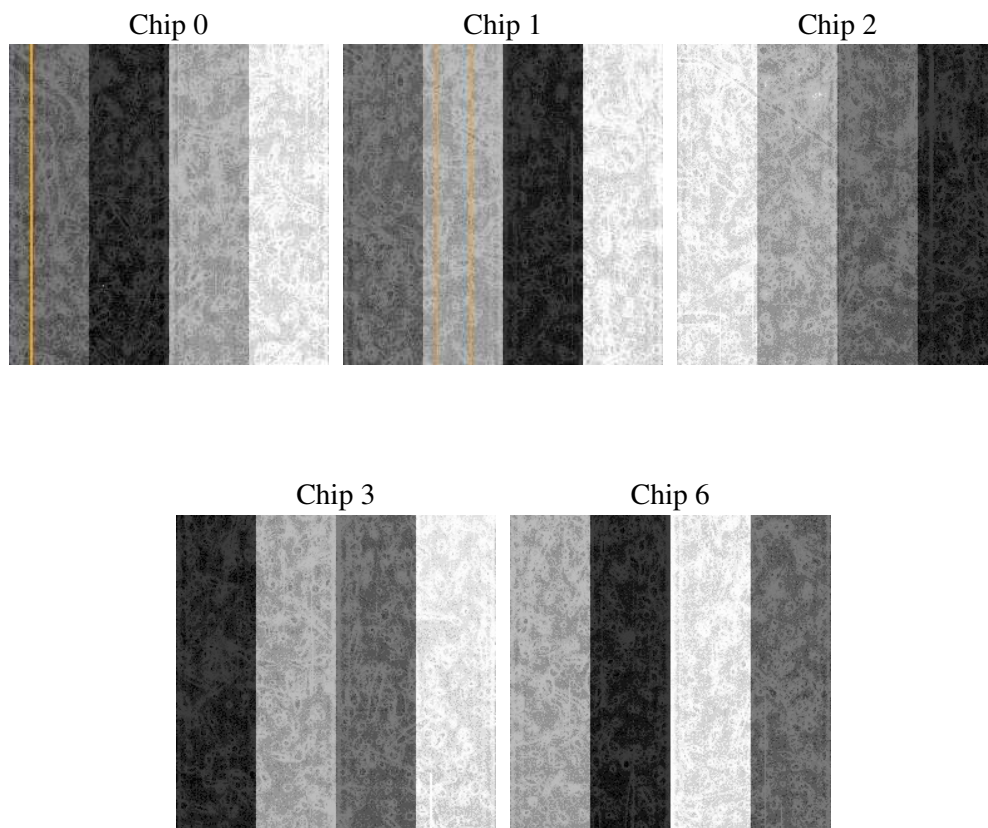
2 OBI

2.1 OBI

2.1.1 Images



2.1.2 Bias



2.1.3 Parameters

obi_num	0
ascdsver	7.6.7.1
caldsver	3.2.1
date	2006-03-21T16:19:35
revision	2

sched_exp_time	29250.000000
ontime	31023.758679241
ontime0	31030.040649652
ontime1	31030.040649652
ontime2	31026.899679303
ontime3	31023.758679241
ontime6	31030.040649652
l1events	959664

2.1.4 Events

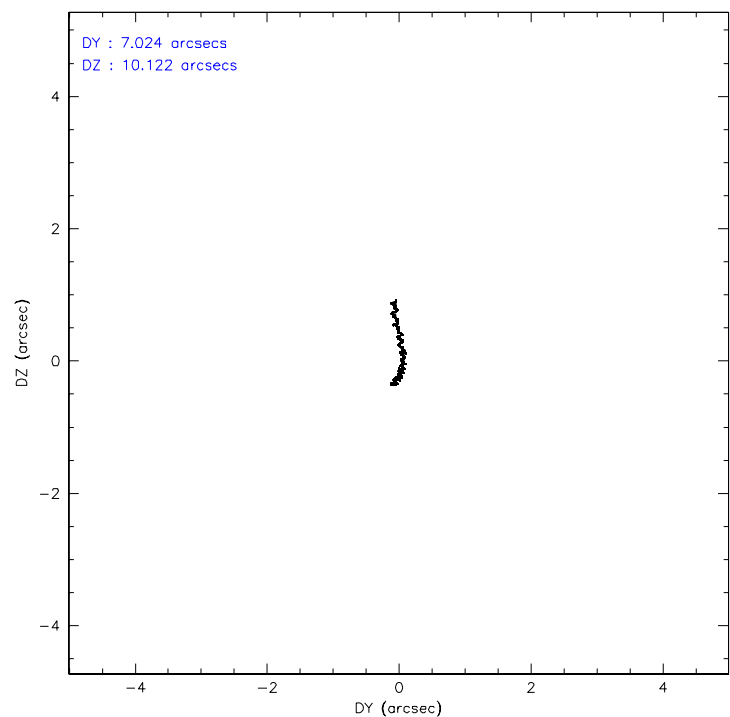
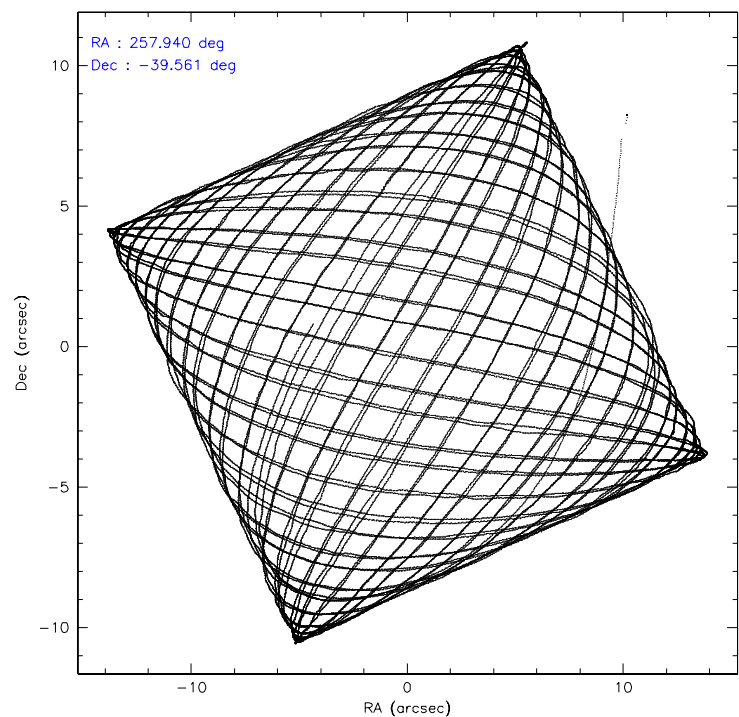
	ccd 0	ccd 1	ccd 2	ccd 3	ccd 6
level 1 events	219231	101699	254102	272106	112526
rejected events	157122	77185	192873	181972	84706
rejected %	71%	75%	75%	66%	75%

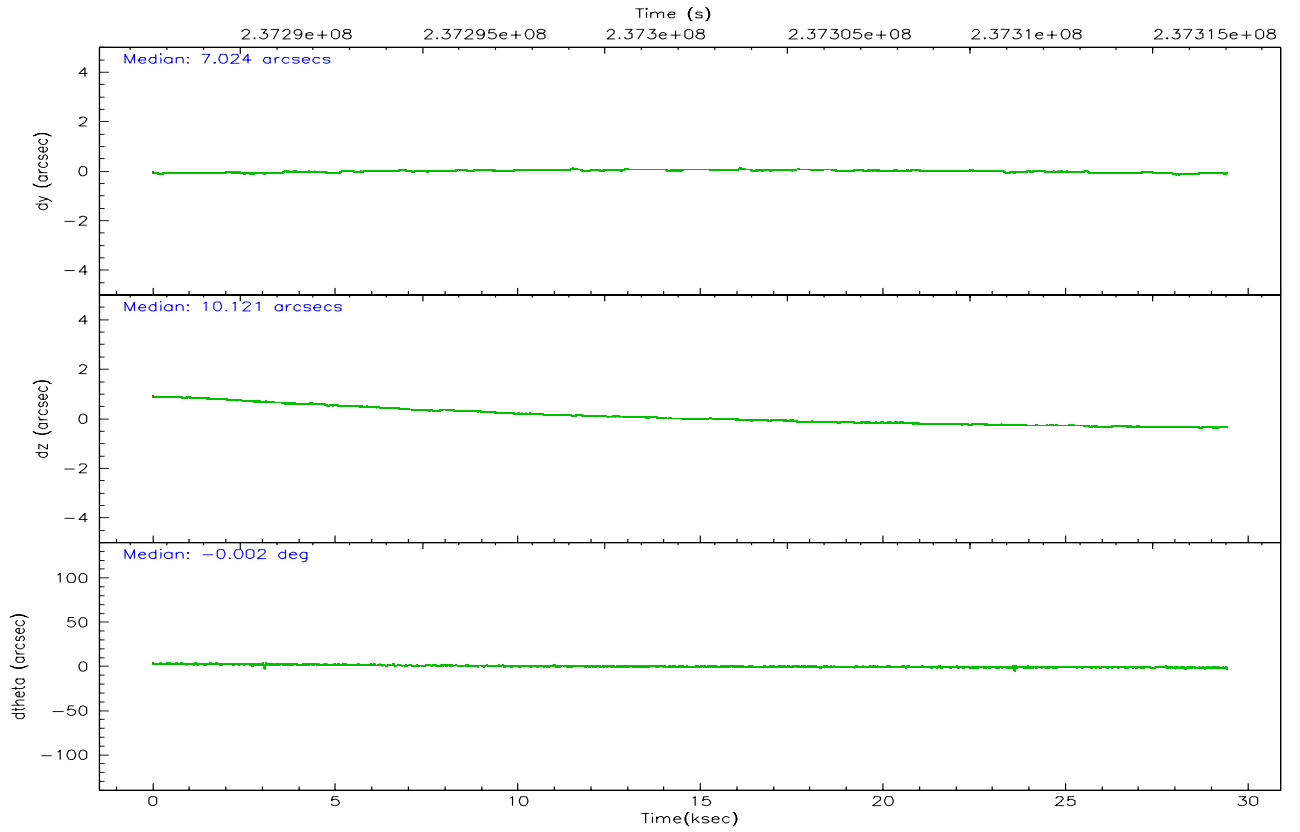
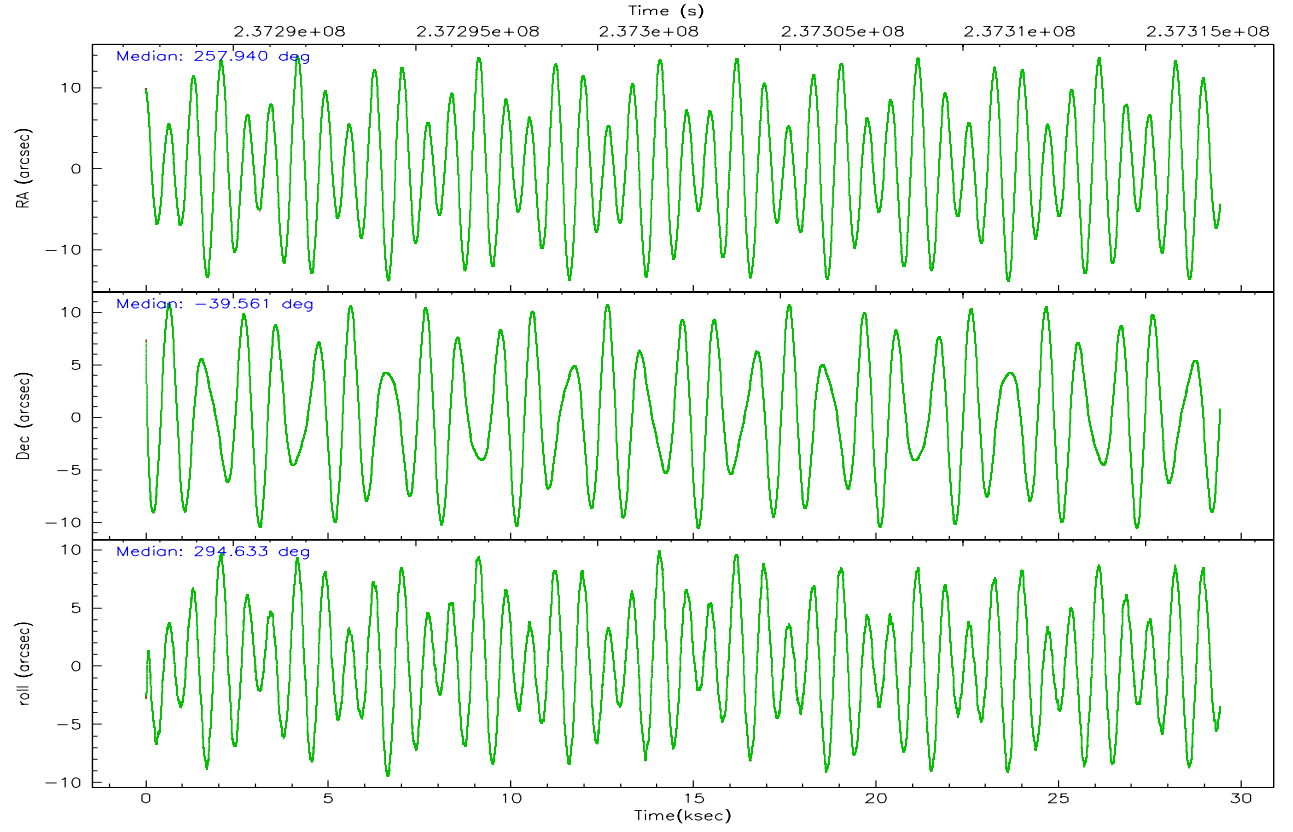
	ccd 0	ccd 1	ccd 2	ccd 3	ccd 6
grade 0 events	42077	2811	43053	65780	3360
	19%	2%	16%	24%	2%
grade 1 events	253	3483	479	544	3887
	0%	3%	0%	0%	3%
grade 2 events	9354	7585	9261	11924	9080
	4%	7%	3%	4%	8%
grade 3 events	3799	5765	3500	4671	6337
	1%	5%	1%	1%	5%
grade 4 events	3565	4108	3642	4682	4353
	1%	4%	1%	1%	3%
grade 5 events	5902	12925	5846	6817	14149
	2%	12%	2%	2%	12%
grade 6 events	4748	5607	4392	5591	6131
	2%	5%	1%	2%	5%
grade 7 events	149533	59415	183929	172097	65229
	68%	58%	72%	63%	57%

2.2 Compared Parameters

Parameter	Planned	Actual	Parameter	Planned	Actual
Instrument	ACIS	ACIS	Obspar format version number	6	6
Detector	ACIS-01236	ACIS-01236	Obspar file type	PREDICTED	ACTUAL
Grating	NONE	NONE	Obspar update status	NONE	UPDATED
Data mode	VFAINT	VFAINT	On-chip summing requested	N	N
Observation mode	POINTING	POINTING	Subarray requested	NONE	NONE
Pointing RA	257.910717	257.9397521989089	Alternating exposures requested	N	N
Pointing Dec	-39.545326	-39.56108723705081	Primary exposure time	0.000000	3.1
Pointing Roll	294.412032	294.6392039018446			
SIM focus pos (mm)	-0.782348	-0.7809083437167272			
SIM defocus (mm)	0	0.001439871863259334			
SIM translation stage pos (mm)	-233.592463	-233.5874344608287			
SIM translation stage offset (mm)	0	-0.005018542100998502			
Observation start time	237287796.184000	237286017.40502			
Observation start date	2005-07-09T09:15:32	2005-07-09T08:46:57			
Observation end time	237317046.184000	237317955.38148			
Observation end date	2005-07-09T17:23:02	2005-07-09T17:39:15			
Read mode	TIMED	TIMED			

2.3 Aspect



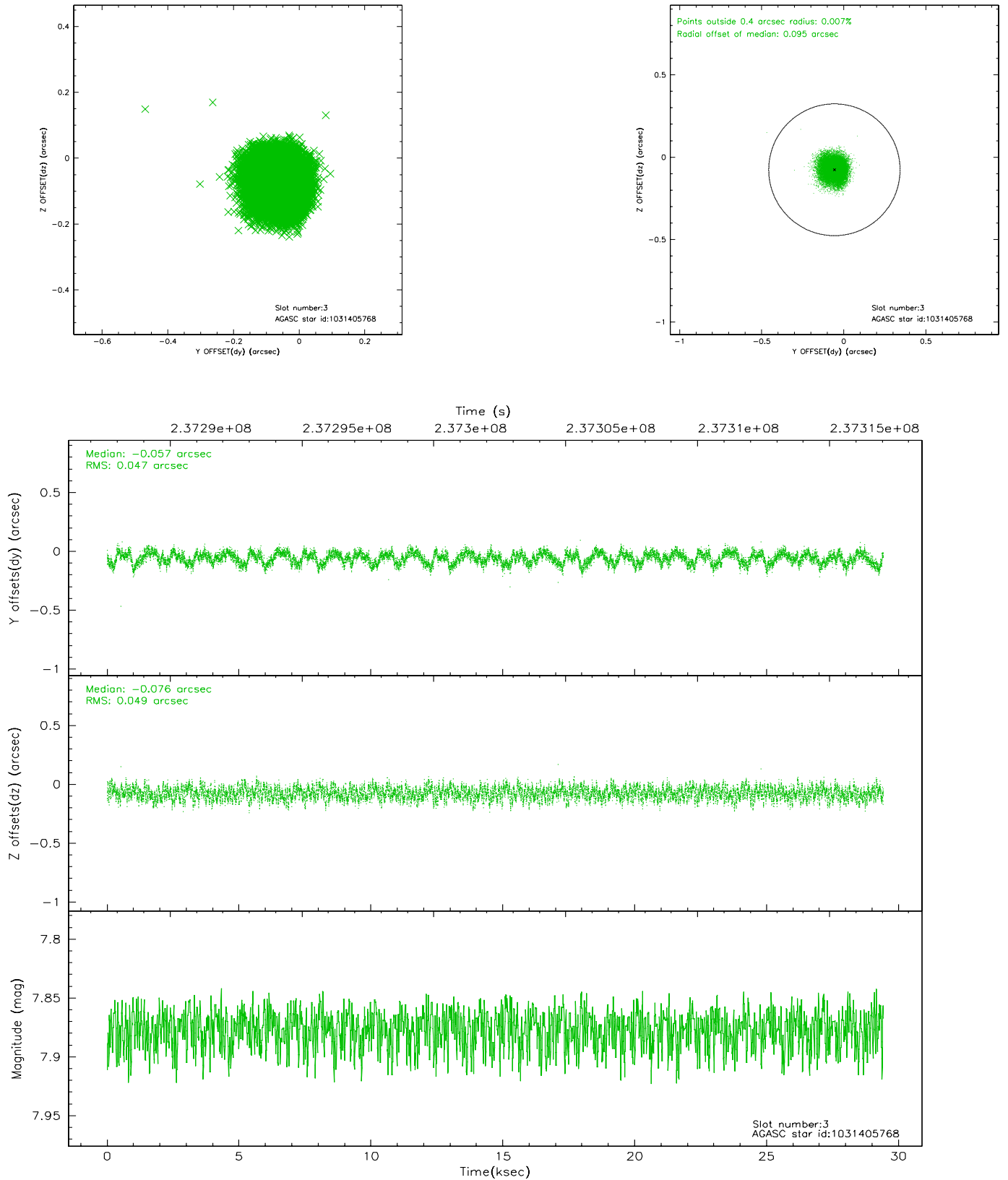


Slot Statistics

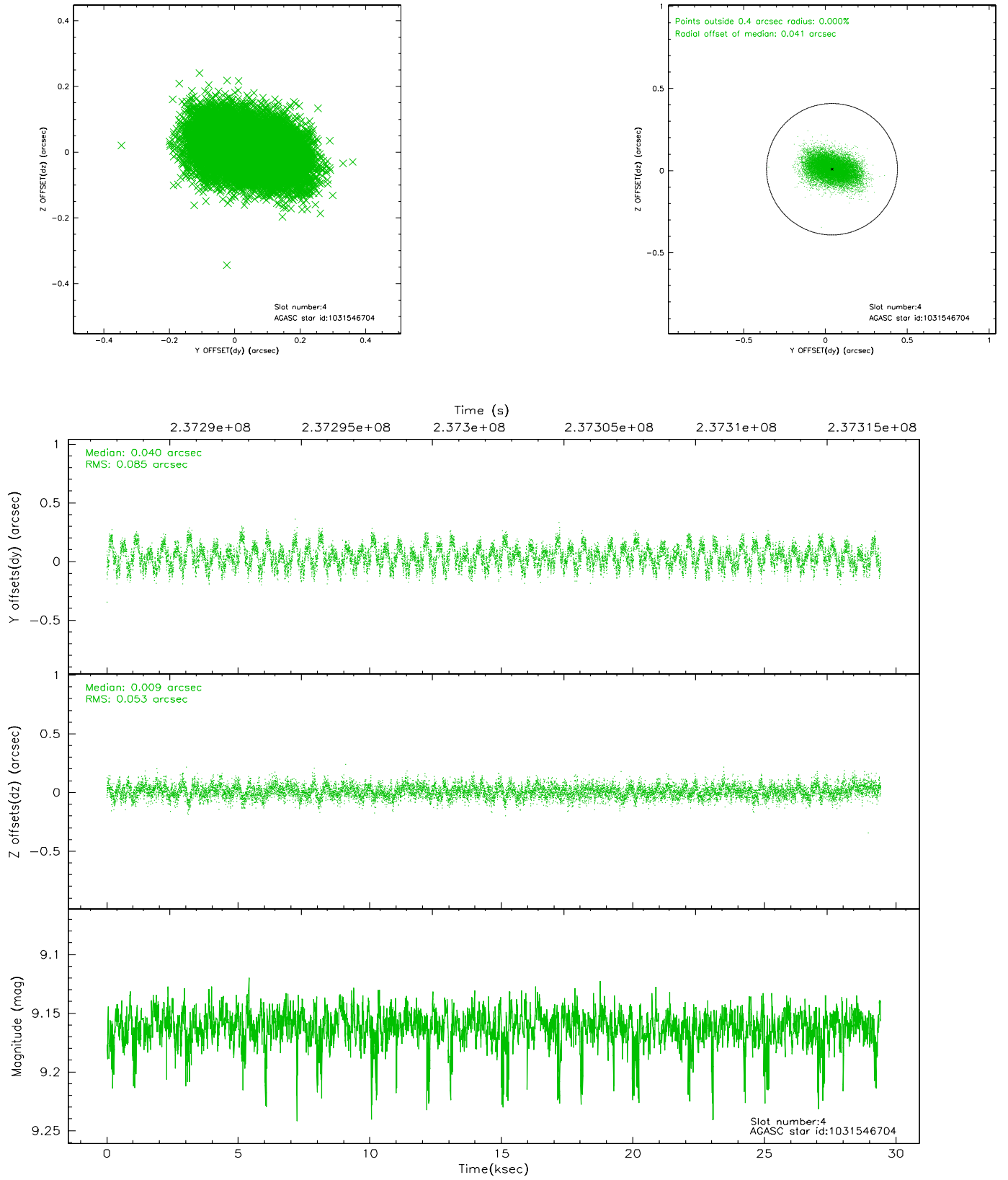
slot	status	id	mag	n_pts	med_dy	med_dz	dr1	dr2	ra	dec	mean_y	mean_z
0	FID	ACIS-I-1	7.24	7178	-0.014	0.038	0.018	0.035	0.000000	0.000000	932.65	-833.67
1	FID	ACIS-I-5	7.23	7178	-0.126	0.019	0.010	0.021	0.000000	0.000000	-1815.53	1063.78
2	FID	ACIS-I-6	7.25	7178	0.048	0.013	0.013	0.021	0.000000	0.000000	398.17	1708.35
3	GUIDE	1031405768	7.88	14353	-0.057	-0.076	0.074	0.113	257.178877	-39.338023	-1513.81	-1550.61
4	GUIDE	1031546704	9.16	14343	0.040	0.009	0.107	0.175	258.328569	-39.071177	-1069.15	1767.72
5	GUIDE	1031932624	8.33	14351	0.098	0.024	0.075	0.121	257.431727	-40.221910	1677.63	-2206.65
6	GUIDE	1032064992	9.80	14291	0.005	0.016	0.115	0.186	258.632257	-39.931078	2095.29	1236.89
7	GUIDE	1031931840	8.08	14350	-0.088	0.030	0.072	0.115	256.966064	-39.446694	-1395.64	-2250.09

2.4 Star Slots

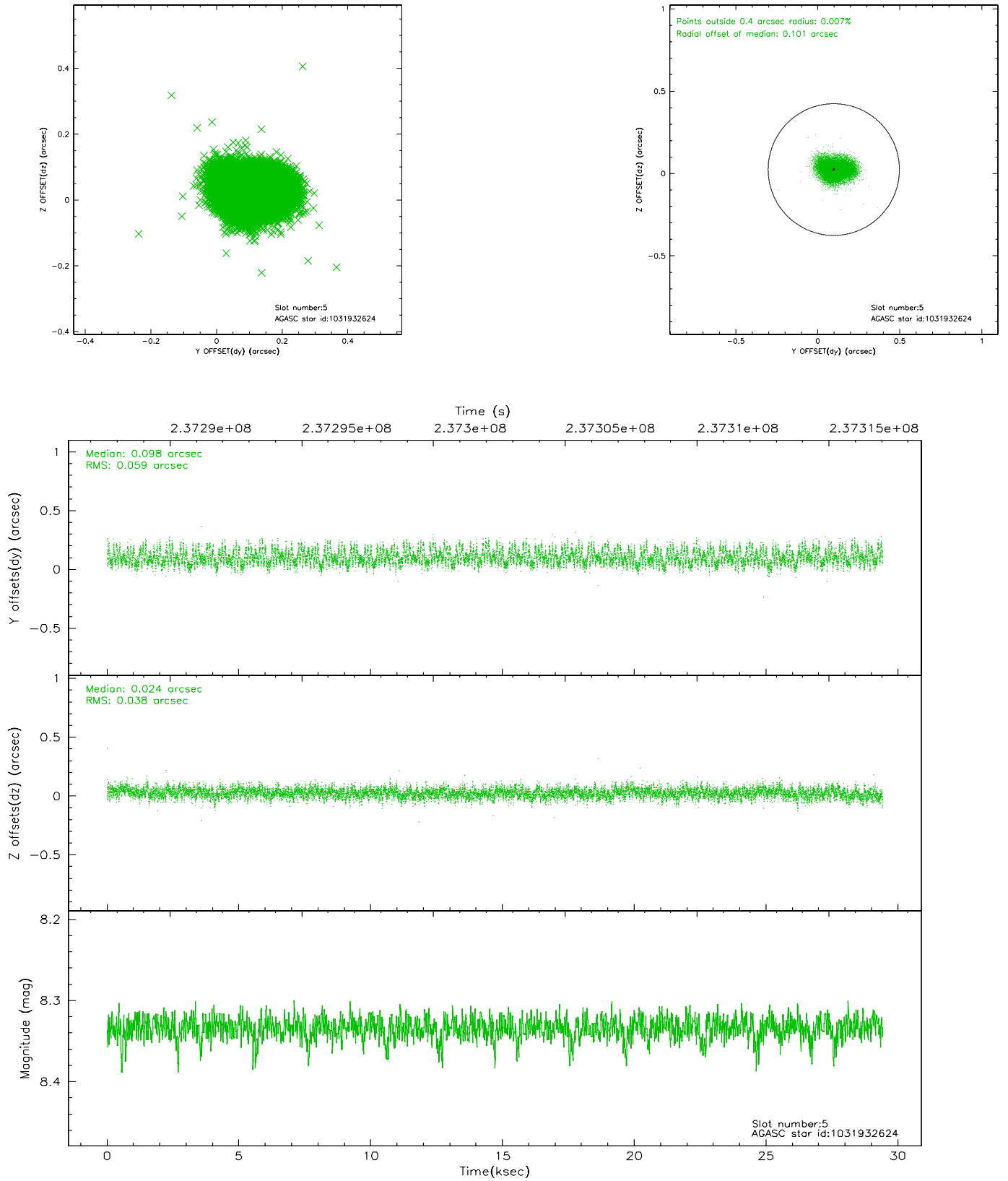
2.4.1 Slot 3



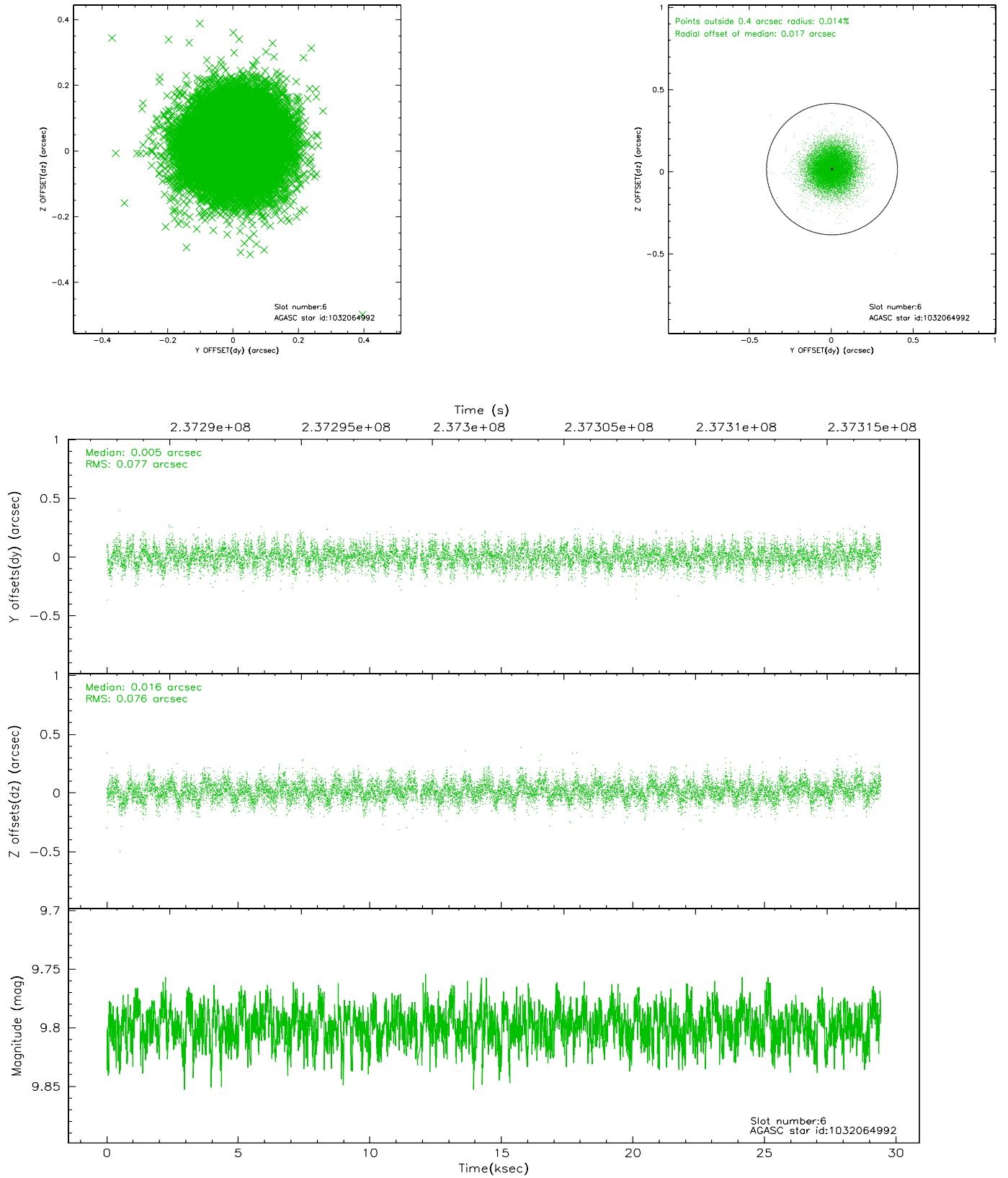
2.4.2 Slot 4



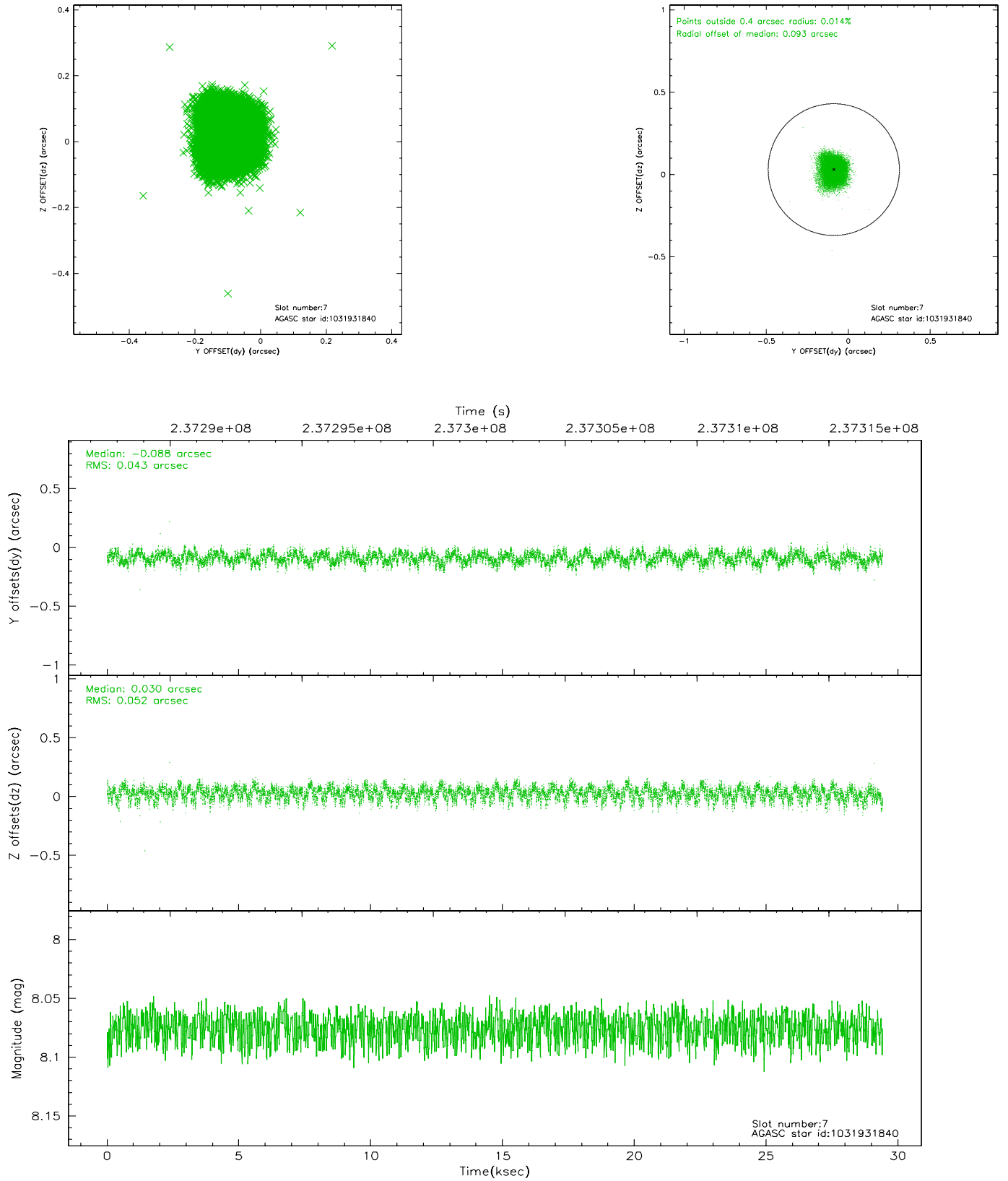
2.4.3 Slot 5



2.4.4 Slot 6

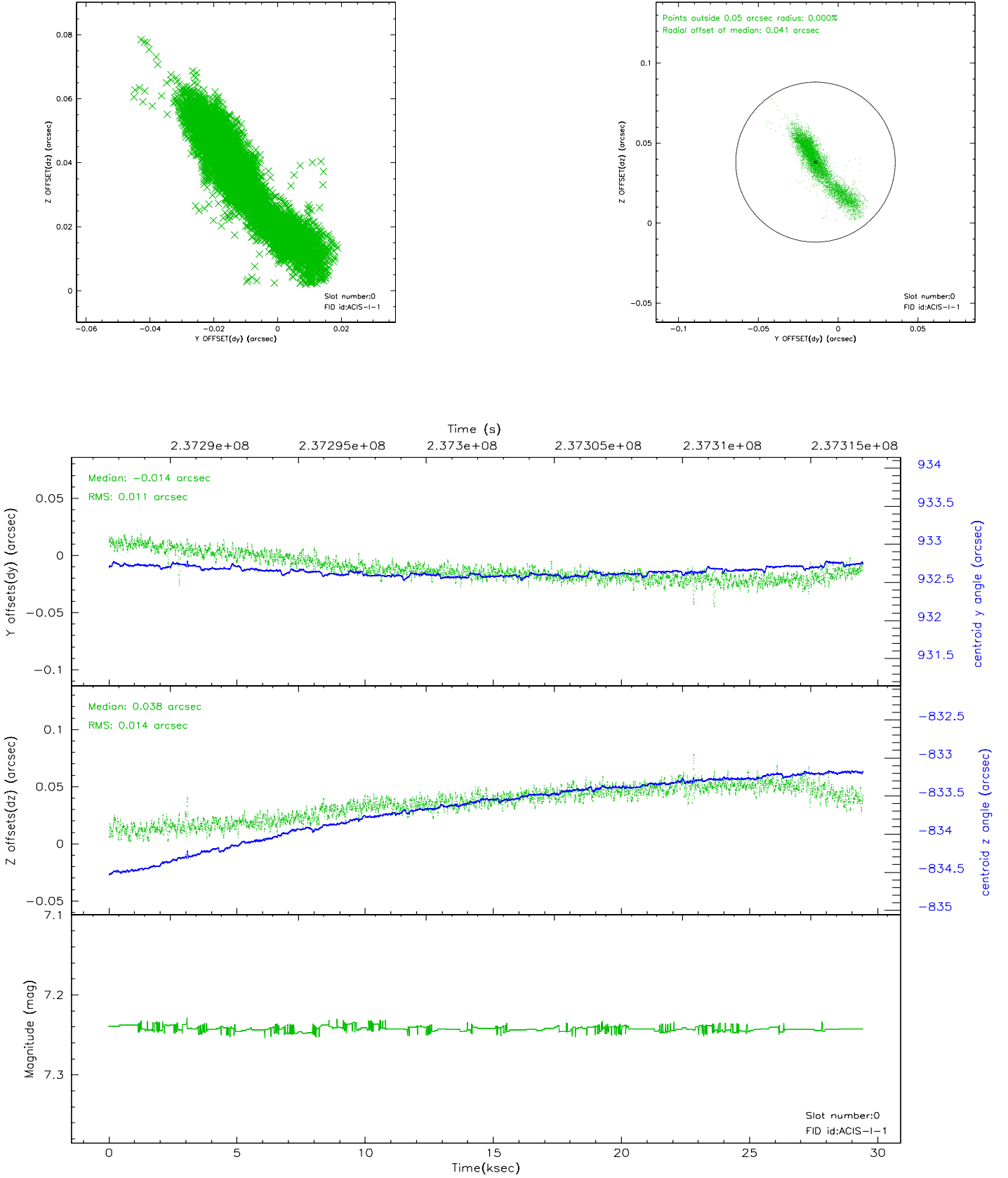


2.4.5 Slot 7

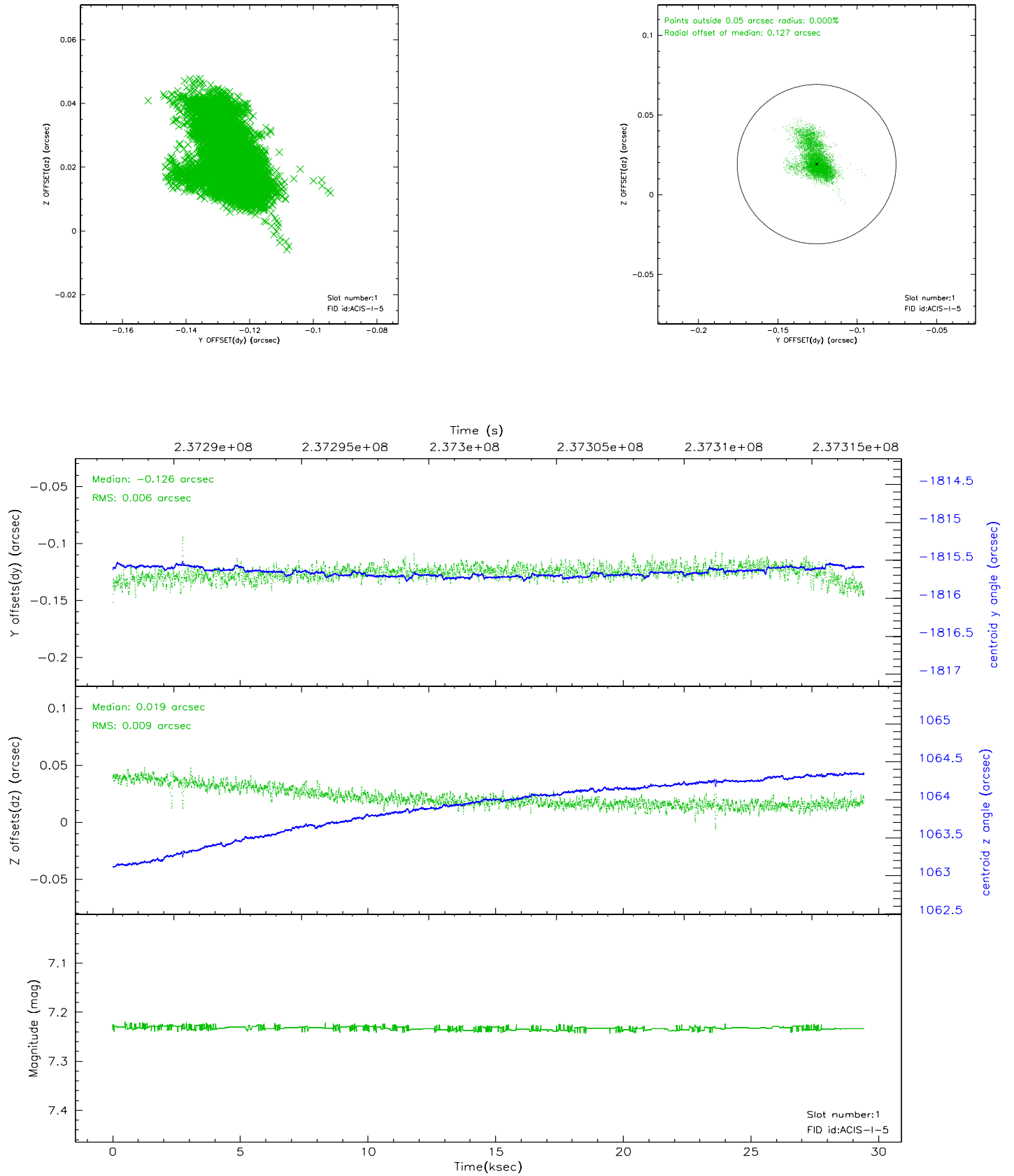


2.5 FID Slots

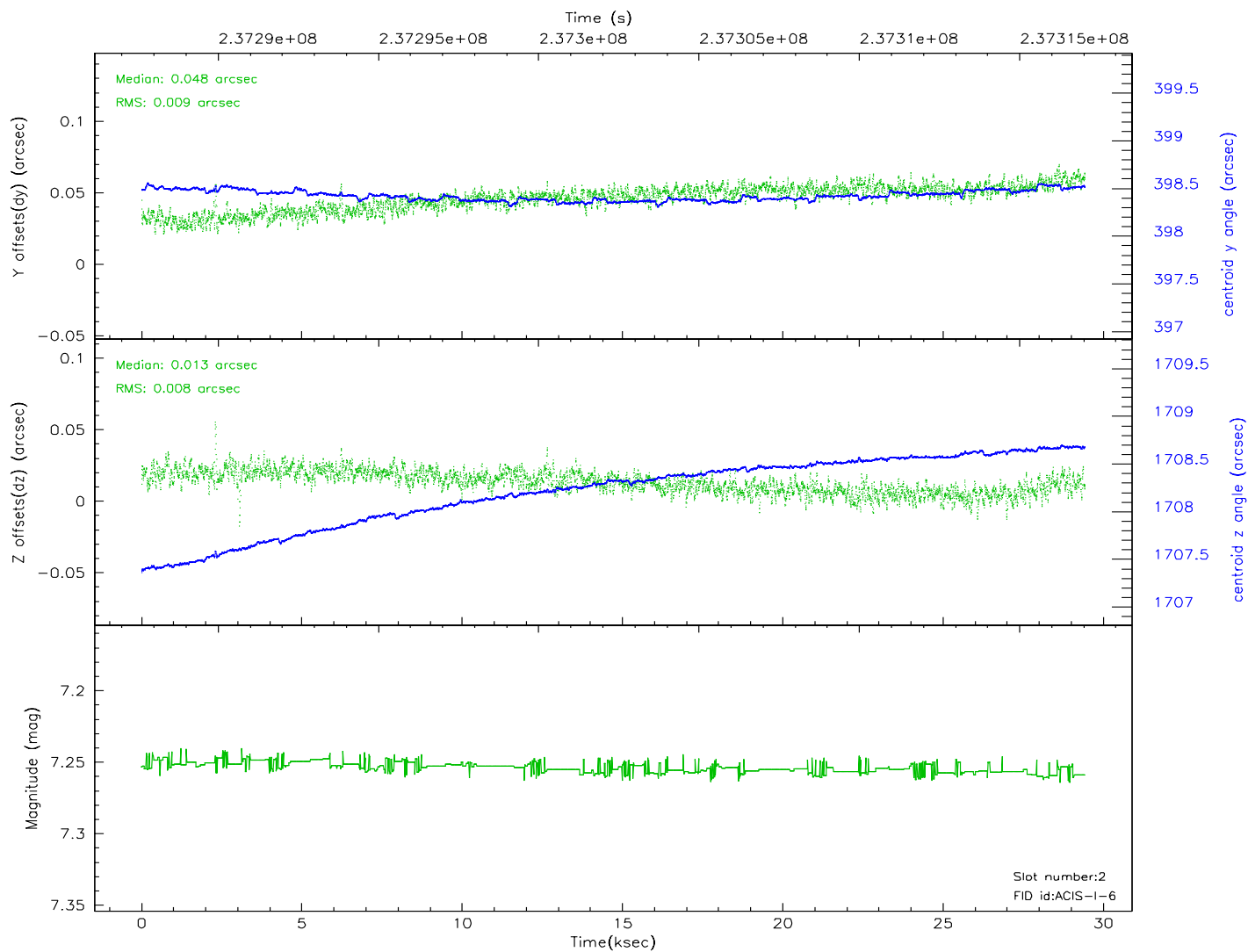
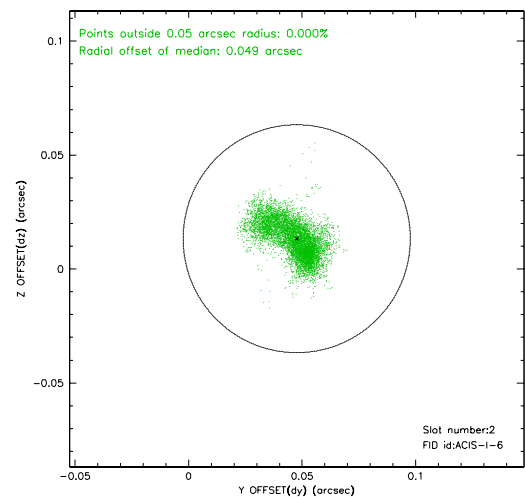
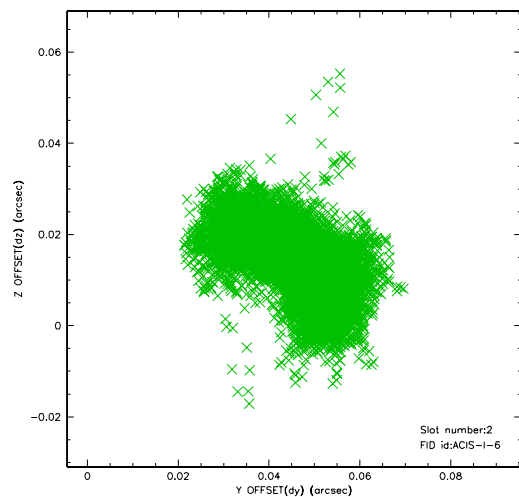
2.5.1 Slot 0



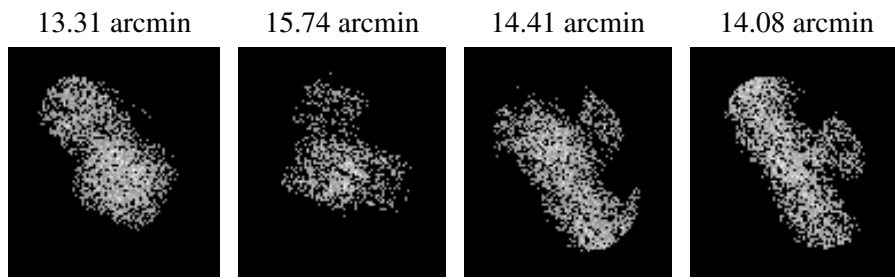
2.5.2 Slot 1



2.5.3 Slot 2



3 Point Sources



A Summary

A.1 Status

V&V Scientist	Jen Lauer
V&V Date (YYYY-MM-DD)	2006.03.21
V&V Edition	1
V&V Disposition and Status	OK
V&V Charge Time	29.413

A.2 Comments

ACIS FEP T-plane latchup anomaly resulted in no astrophysical events being recorded on I1 and S2 chips. A portion of the supernova remnant fell on these chips. Please contact the Chandra X-ray Center if we can answer any questions.