

V&V Reference Report

L2 ASCDS Version : 7.6.7

Observation 5559 - L2 Version 002
Chandra X-Ray Center

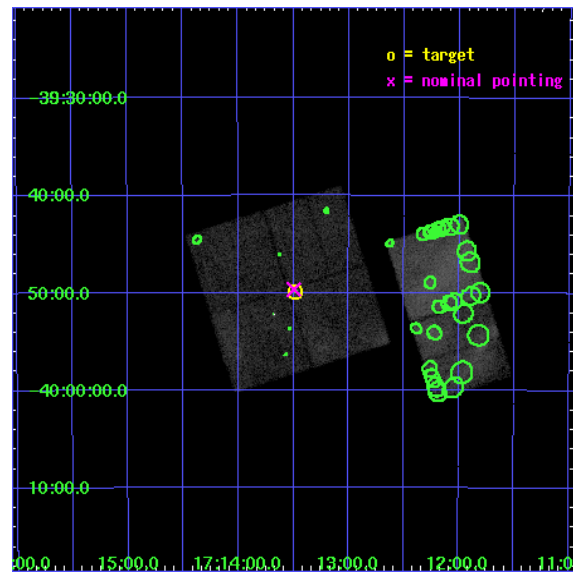
L2 Processing Date: Feb 28 2006

Contents

1	Front	2
2	OBI	3
2.1	OBI	3
2.1.1	Images	3
2.1.2	Bias	3
2.1.3	Parameters	4
2.1.4	Events	4
2.2	Compared Parameters	5
2.3	Aspect	6
2.4	Star Slots	9
2.4.1	Slot 3	9
2.4.2	Slot 4	10
2.4.3	Slot 5	11
2.4.4	Slot 6	12
2.4.5	Slot 7	13
2.5	FID Slots	14
2.5.1	Slot 0	14
2.5.2	Slot 1	15
2.5.3	Slot 2	16
3	Point Sources	17
A	Summary	18
A.1	Status	18
A.2	Comments	18

1 Front

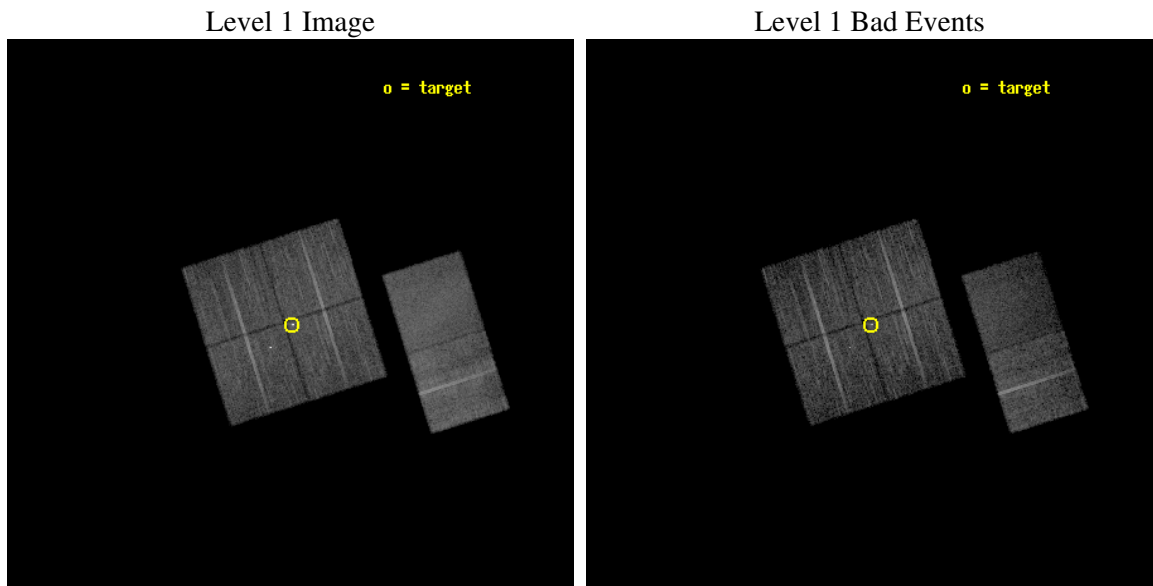
seq_num	500548
obs_id	5559
title	Accurate localization of the CCO candidate in SNR G347.3-0.5
observer	Dr Jasmina Lazendic
object	1WGA J1713.4-3949
dtcycle	0
cycle	P
ra_targ	258.37
dec_targ	-39.831
ra_nom	258.37384377963
dec_nom	-39.827483192441
roll_nom	72.491179212686
revision	2
ontime	9766.3999636173
livetime	9642.731926658
ontime0	9766.3999636173
ontime1	9759.9179731309
ontime2	9763.1589634418
ontime3	9766.3999636173
ontime7	9766.3999636173
ontime8	9766.3999636173
l2events	128276



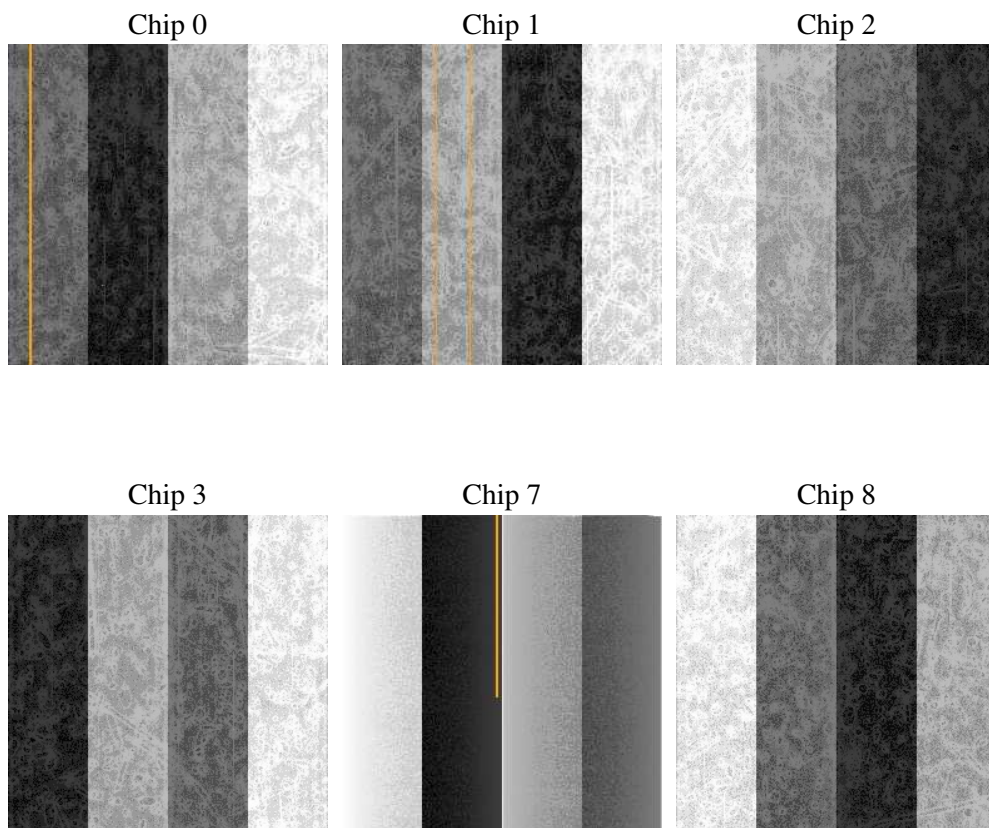
2 OBI

2.1 OBI

2.1.1 Images



2.1.2 Bias



2.1.3 Parameters

obi_num	0
ascdsver	7.6.7
caldbver	3.2.1
date	2006-02-28T23:38:39
revision	2

sched_exp_time	9719.458000
ontime	9771.6491445005
ontime0	9771.6491644084
ontime1	9765.1671739221
ontime2	9768.408144325
ontime3	9771.6491445005
ontime7	9771.6491644084
ontime8	9771.6491644084
l1events	475494

2.1.4 Events

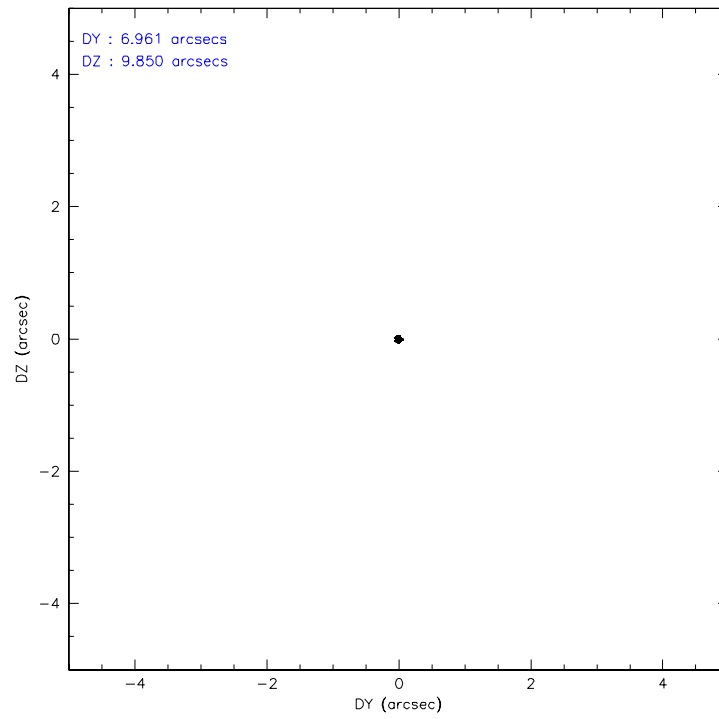
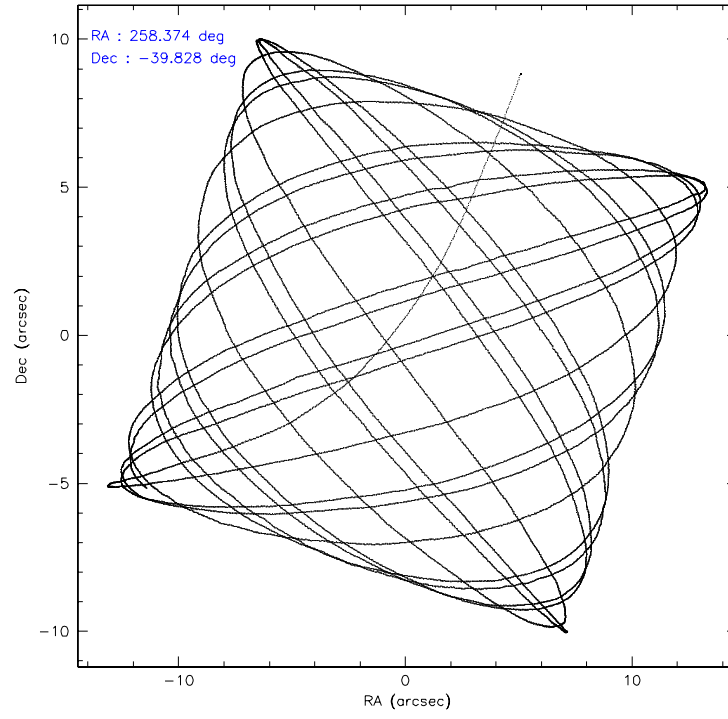
	ccd 0	ccd 1	ccd 2	ccd 3	ccd 7	ccd 8
level 1 events	65352	70258	75450	72744	87896	103794
rejected events	51021	52298	60558	55611	42273	64803
rejected %	78%	74%	80%	76%	48%	62%

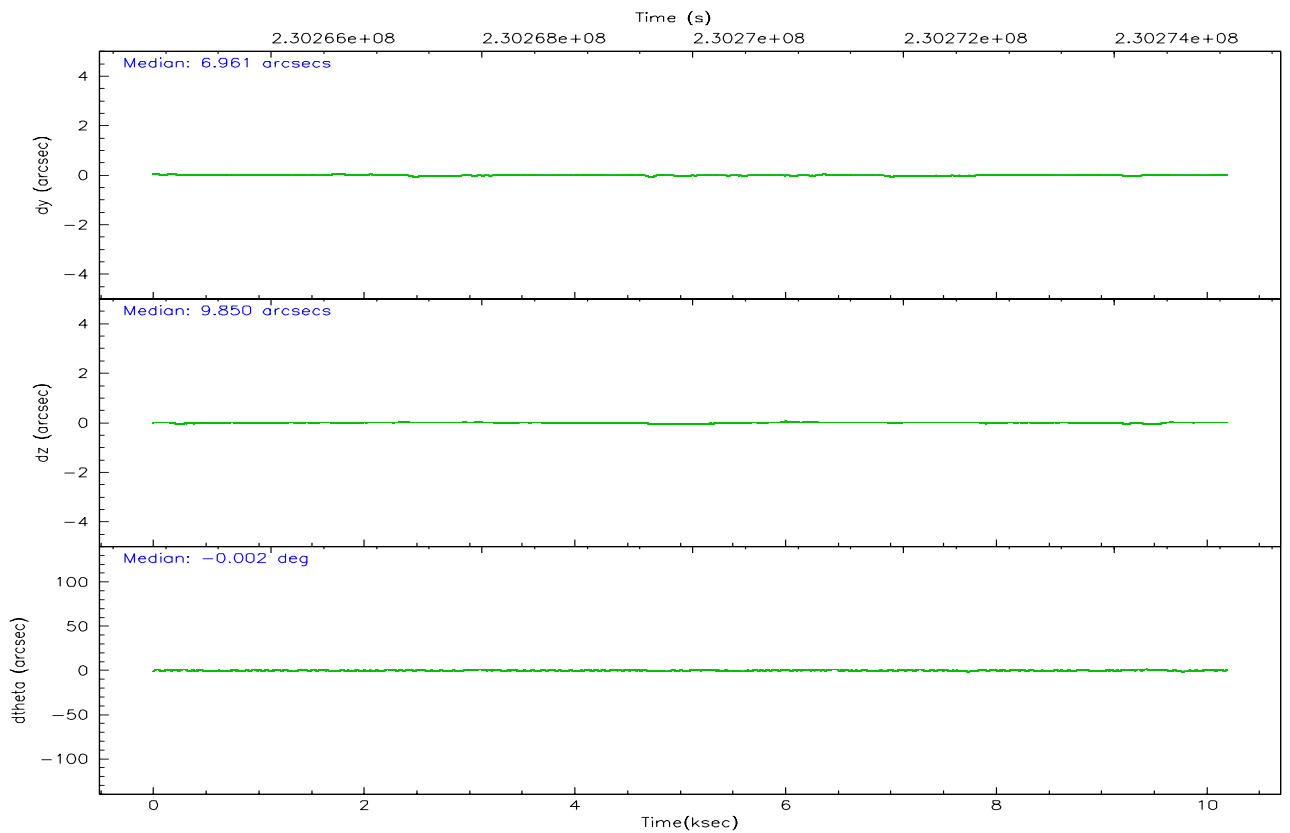
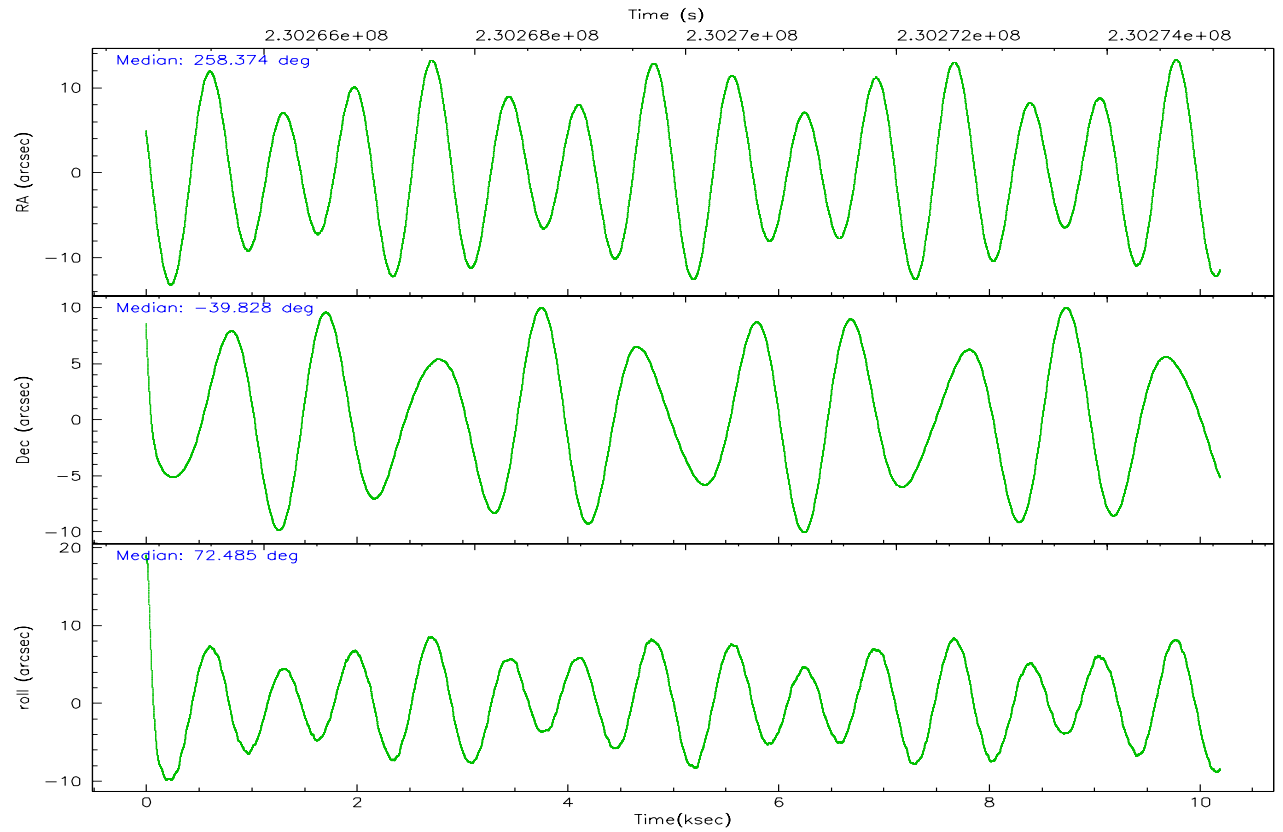
	ccd 0	ccd 1	ccd 2	ccd 3	ccd 7	ccd 8
grade 0 events	8464	11025	9182	10672	5042	21014
	12%	15%	12%	14%	5%	20%
grade 1 events	67	210	60	284	35	150
	0%	0%	0%	0%	0%	0%
grade 2 events	2359	2736	2355	2574	11401	6598
	3%	3%	3%	3%	12%	6%
grade 3 events	1077	1222	1015	1135	3155	2834
	1%	1%	1%	1%	3%	2%
grade 4 events	938	1175	976	1100	3048	2634
	1%	1%	1%	1%	3%	2%
grade 5 events	2240	2683	2196	2756	5429	3793
	3%	3%	2%	3%	6%	3%
grade 6 events	1497	1807	1370	1655	22992	5915
	2%	2%	1%	2%	26%	5%
grade 7 events	48710	49400	58296	52568	36794	60856
	74%	70%	77%	72%	41%	58%

2.2 Compared Parameters

Parameter	Planned	Actual	Parameter	Planned	Actual
Instrument	ACIS	ACIS	Obspar format version number	6	6
Detector	ACIS-012378	ACIS-012378	Obspar file type	PREDICTED	ACTUAL
Grating	NONE	NONE	Obspar update status	NONE	UPDATED
Data mode	VFAINT	VFAINT	On-chip summing requested	N	N
Observation mode	POINTING	POINTING	Subarray requested	NONE	NONE
Pointing RA	258.381774	258.373843779631	Alternating exposures requested	N	N
Pointing Dec	-39.854190	-39.82748319244109	Primary exposure time	0.000000	3.2
Pointing Roll	72.287543	72.49117921268598			
SIM focus pos (mm)	-0.782348	-0.7809083437167272			
SIM defocus (mm)	0	0.001439871863259334			
SIM translation stage pos (mm)	-233.592463	-233.5874344608287			
SIM translation stage offset (mm)	0	-0.005018542100998502			
Observation start time	230265353.184000	230264198.72231			
Observation start date	2005-04-19T02:34:49	2005-04-19T02:16:38			
Observation end time	230275073.184000	230275309.72282			
Observation end date	2005-04-19T05:16:49	2005-04-19T05:21:49			
Read mode	TIMED	TIMED			

2.3 Aspect



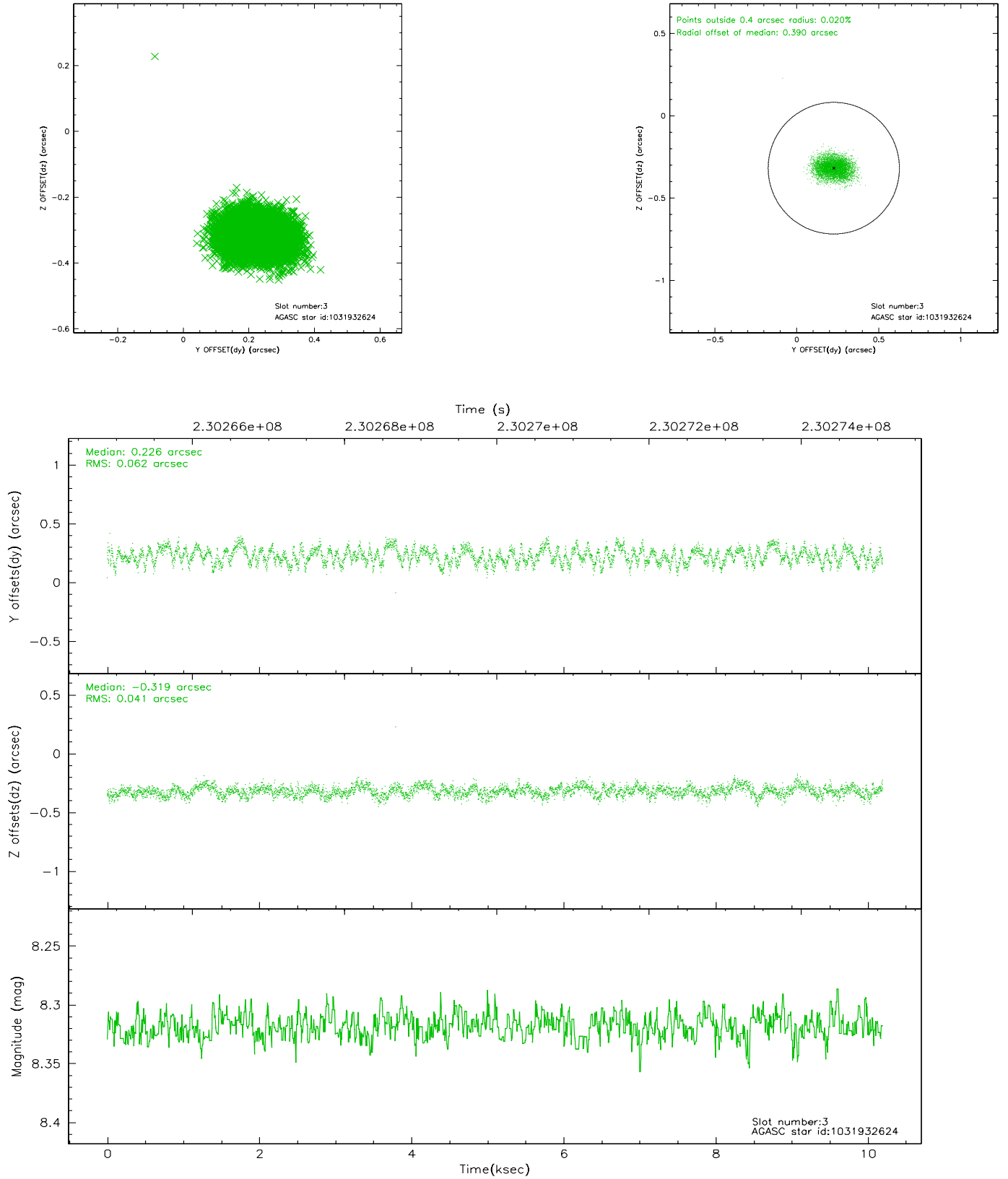


Slot Statistics

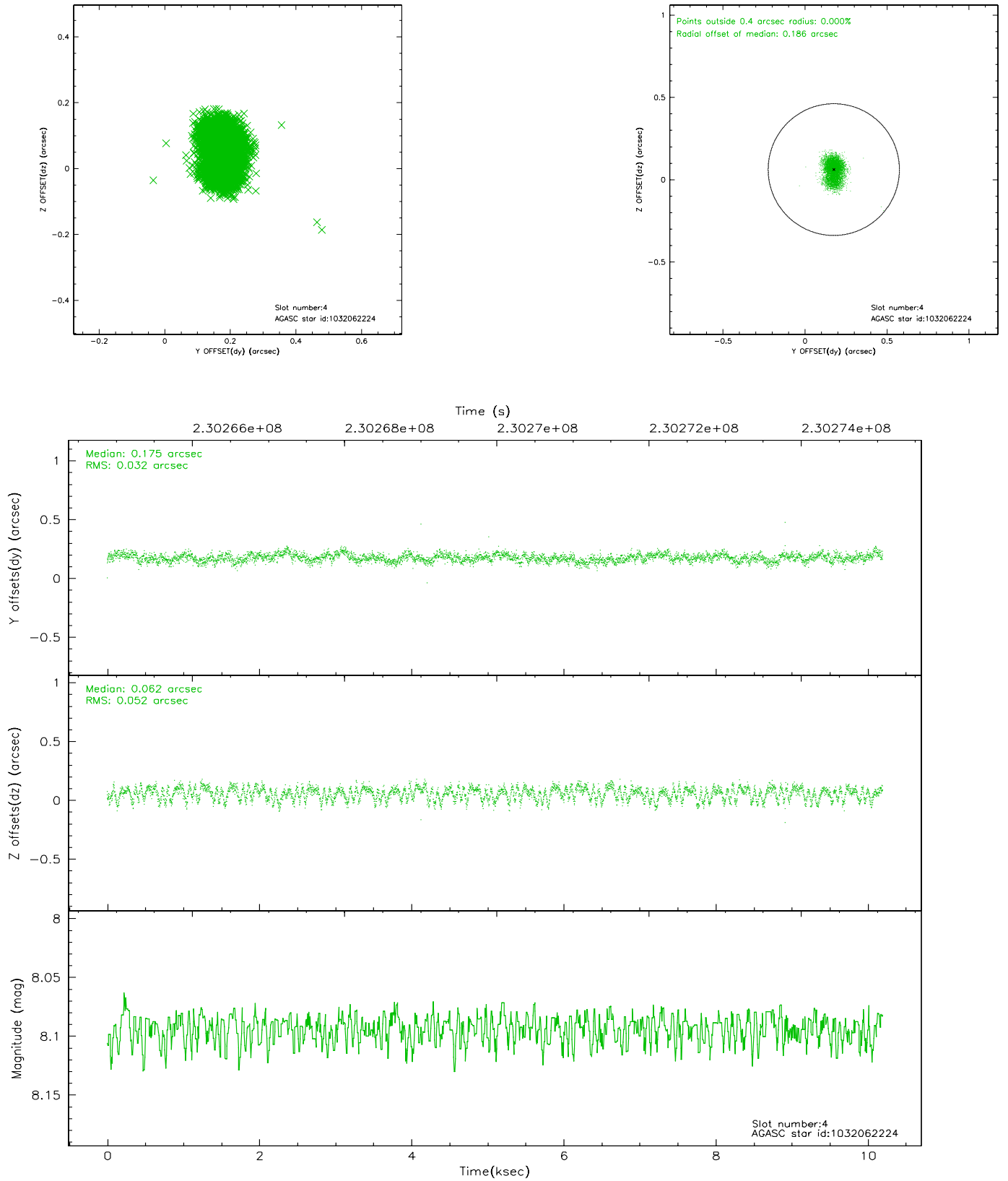
slot	status	id	mag	n_pts	med_dy	med_dz	dr1	dr2	ra	dec	mean_y	mean_z
0	FID	ACIS-I-1	7.25	2488	-0.007	0.033	0.007	0.012	0.000000	0.000000	932.72	-833.28
1	FID	ACIS-I-5	7.23	2488	-0.140	0.022	0.006	0.010	0.000000	0.000000	-1815.24	1063.93
2	FID	ACIS-I-6	7.26	2488	0.056	0.016	0.007	0.012	0.000000	0.000000	397.76	1709.02
3	GUIDE	1031932624	8.32	4974	0.226	-0.319	0.080	0.126	257.431727	-40.221910	-2068.72	2080.29
4	GUIDE	1032062224	8.09	4976	0.175	0.062	0.065	0.105	258.732987	-40.317739	-1298.28	-1426.26
5	GUIDE	1032064496	7.24	4973	-0.129	0.118	0.065	0.110	259.271174	-39.429374	2197.63	-1894.30
6	GUIDE	1032064528	7.89	4975	-0.151	0.122	0.059	0.096	259.076580	-39.610595	1415.24	-1571.16
7	GUIDE	1032064856	9.21	4968	-0.114	0.018	0.096	0.150	258.958011	-40.551517	-1916.11	-2267.31

2.4 Star Slots

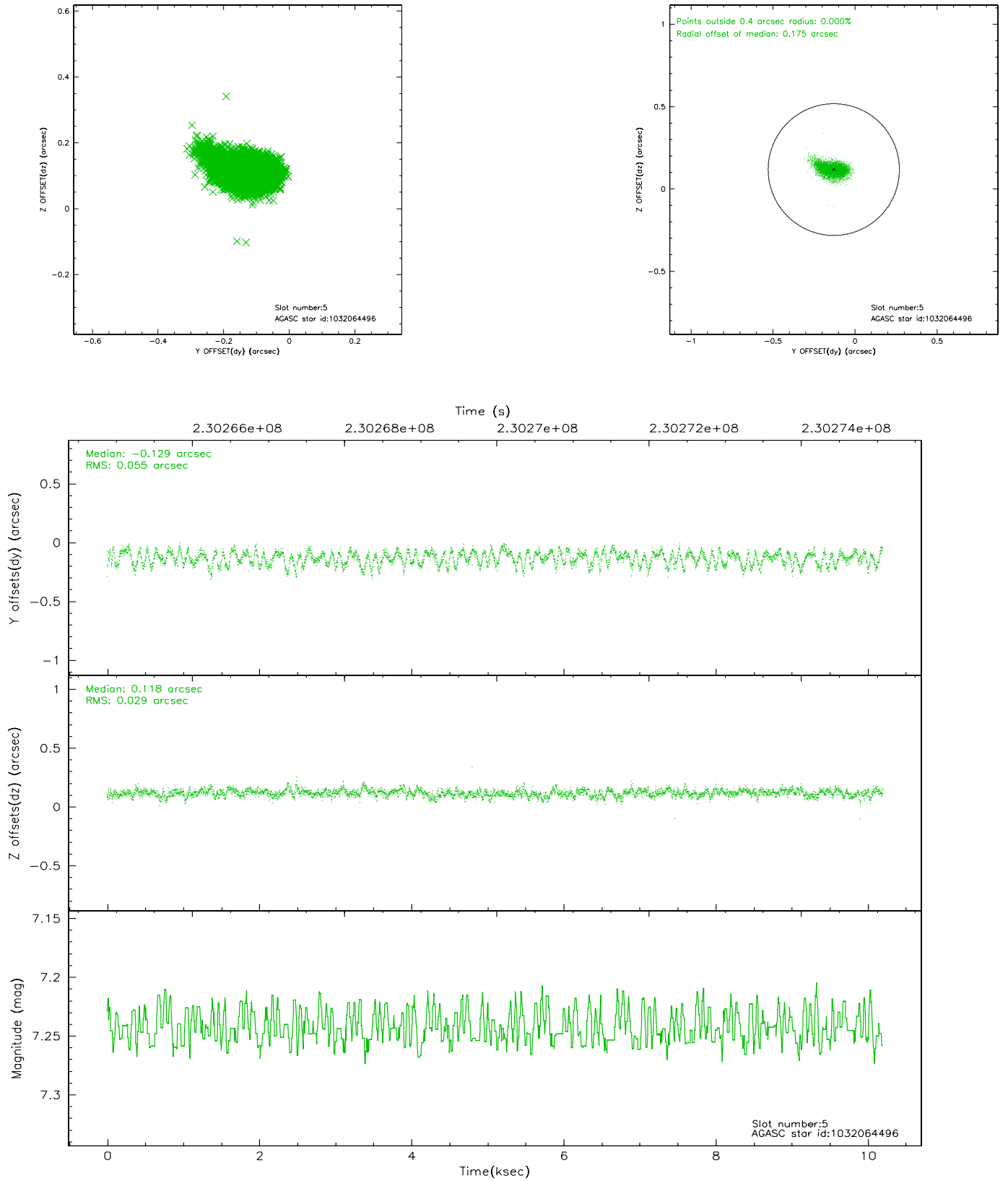
2.4.1 Slot 3



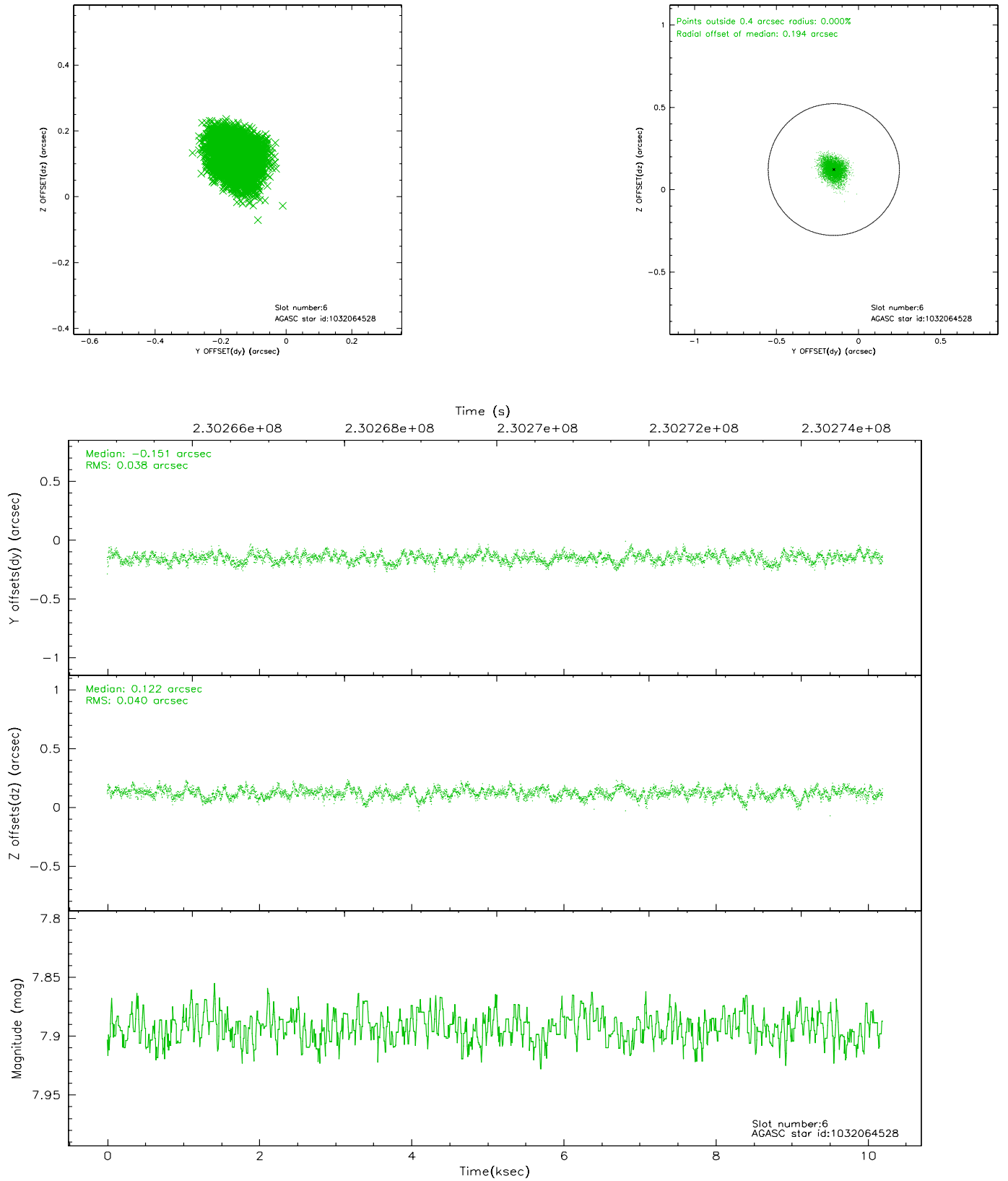
2.4.2 Slot 4



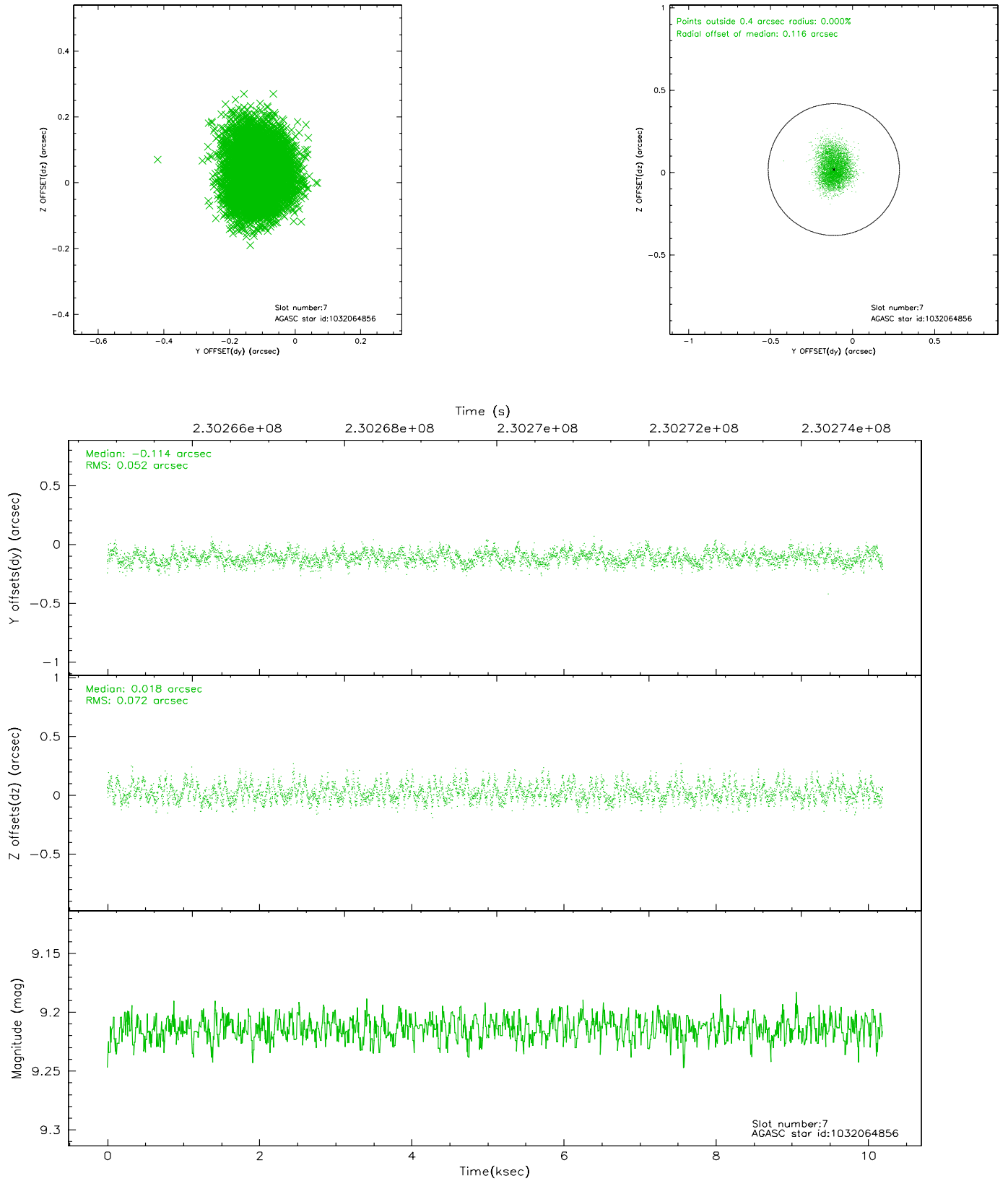
2.4.3 Slot 5



2.4.4 Slot 6

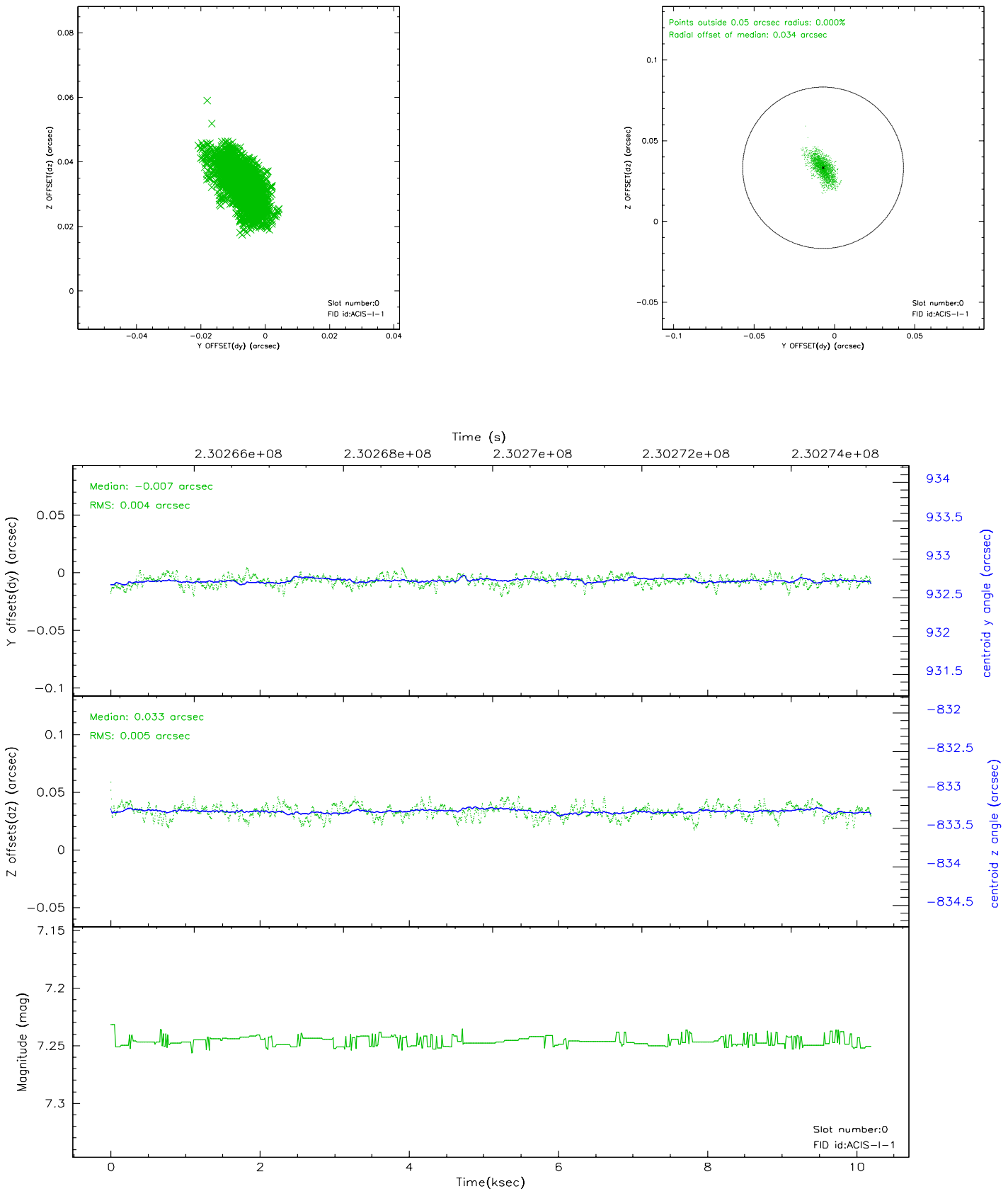


2.4.5 Slot 7

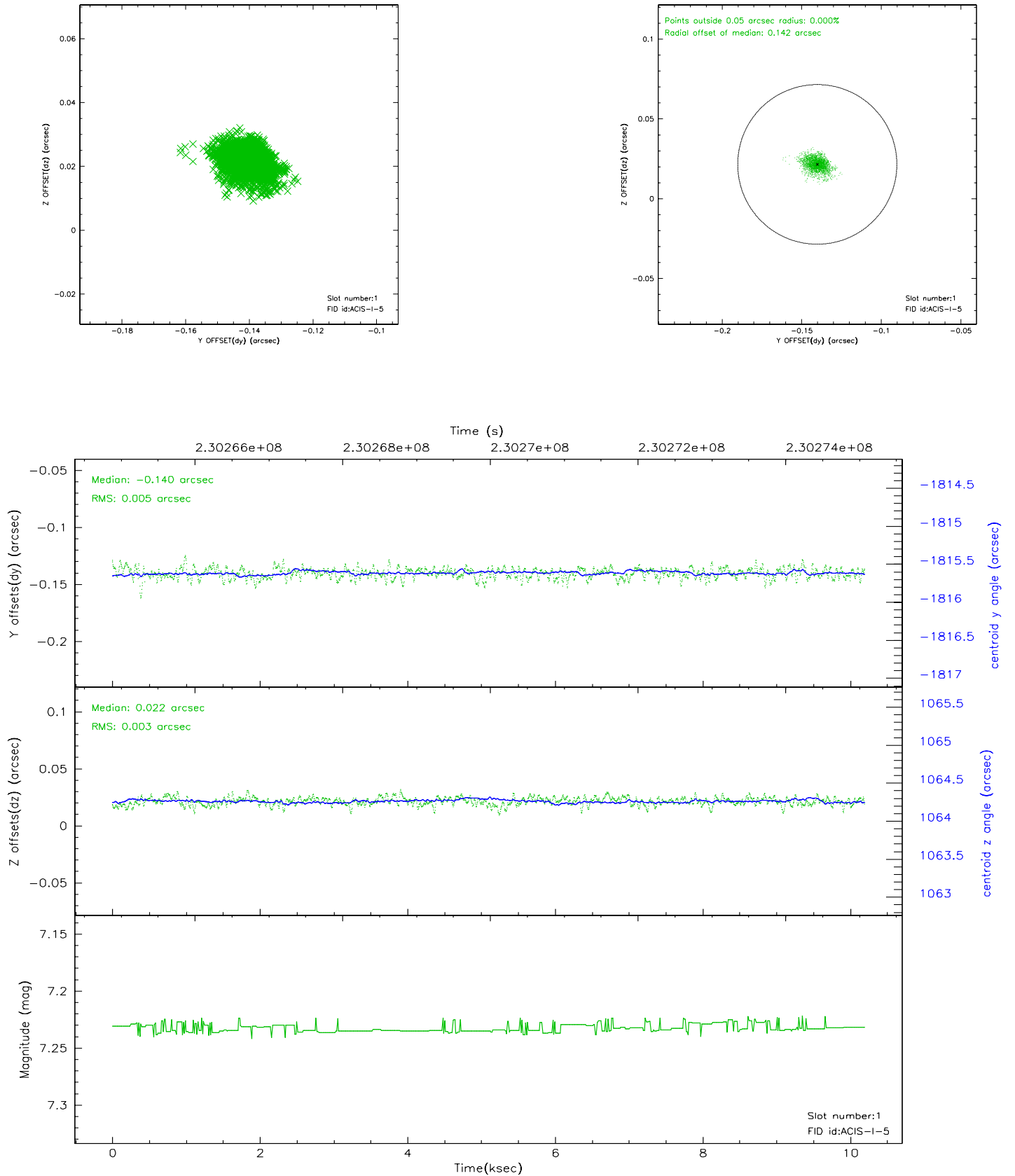


2.5 FID Slots

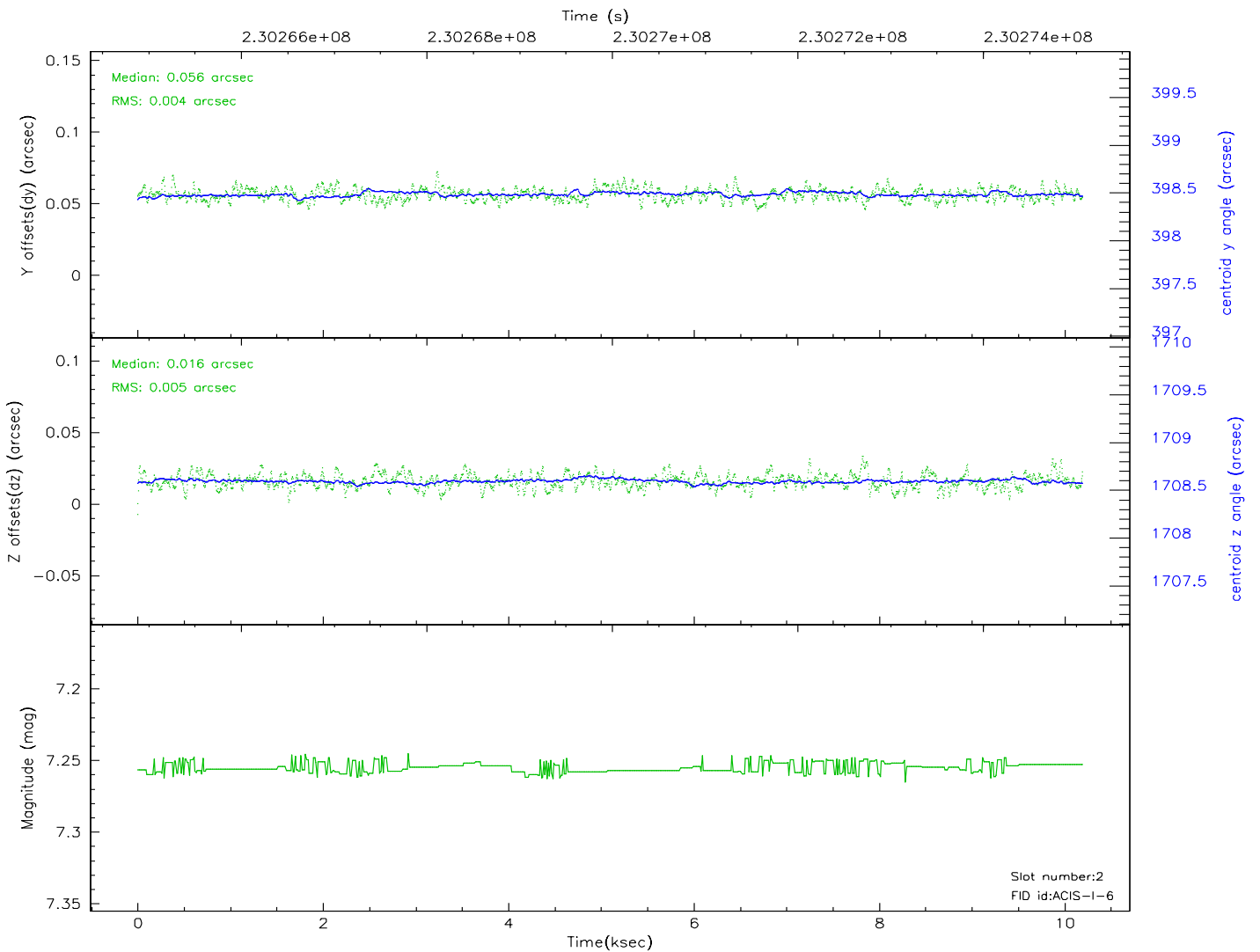
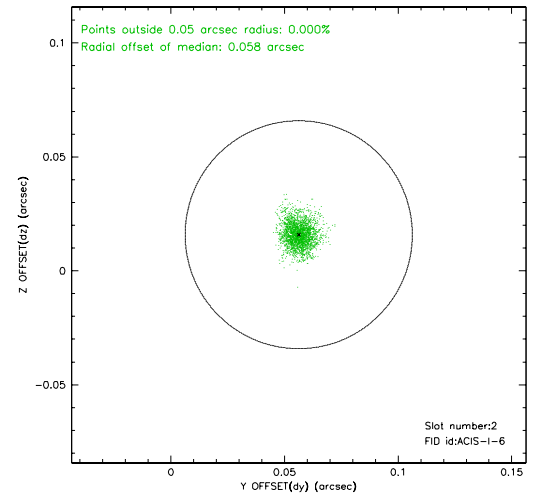
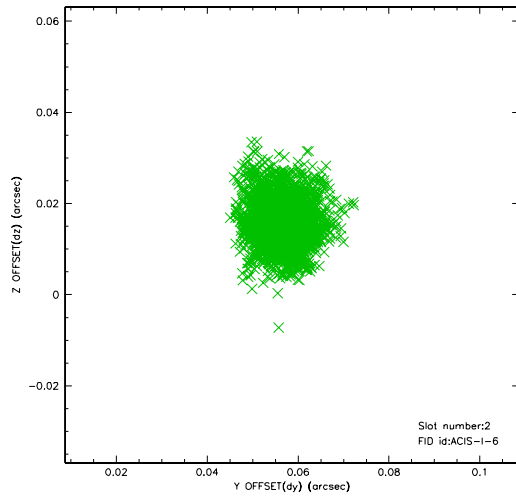
2.5.1 Slot 0



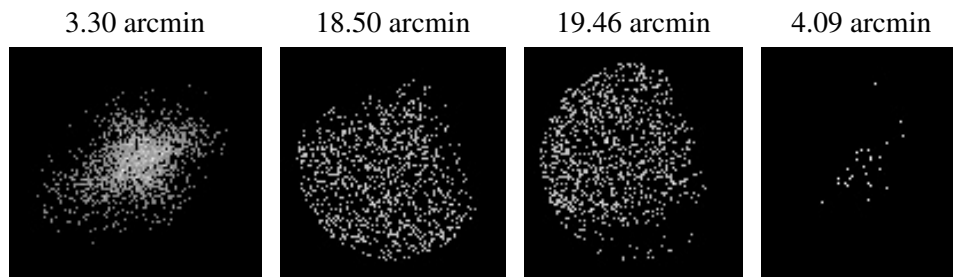
2.5.2 Slot 1



2.5.3 Slot 2



3 Point Sources



A Summary

A.1 Status

V&V Scientist	Beth Sundheim
V&V Date (YYYY-MM-DD)	2006.03.01
V&V Edition	1
V&V Disposition and Status	OK
V&V Charge Time	9.766399

A.2 Comments