

V&V Reference Report

L2 ASCDS Version : 7.6.7.1

Observation 5554 - L2 Version 002
Chandra X-Ray Center

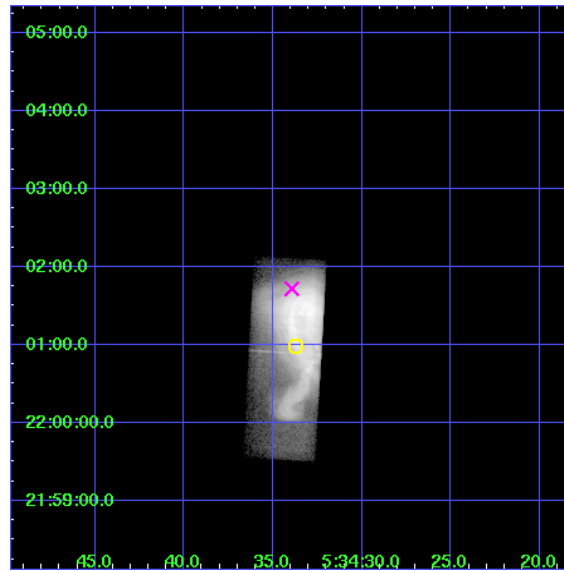
L2 Processing Date : Mar 20 2006

Contents

1	Front	2
2	OBI	3
2.1	OBI	3
2.1.1	Images	3
2.1.2	Parameters	4
2.1.3	Events	4
2.2	Compared Parameters	5
2.3	Aspect	6
2.4	Star Slots	9
2.4.1	Slot 3	9
2.4.2	Slot 4	10
2.4.3	Slot 5	11
2.4.4	Slot 6	12
2.4.5	Slot 7	13
2.5	FID Slots	14
2.5.1	Slot 0	14
2.5.2	Slot 1	15
2.5.3	Slot 2	16
3	Gratings	17
3.1	HEG Arm	17
3.2	MEG Arm	19
A	Summary	21
A.1	Status	21
A.2	Comments	21

1 Front

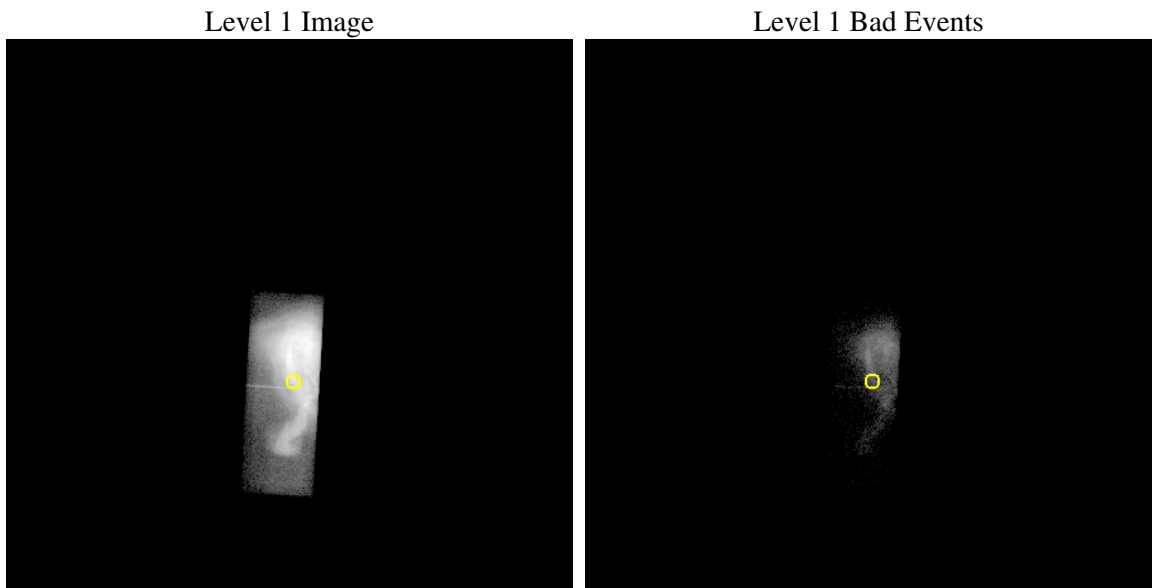
seq_num	500543
obs_id	5554
title	Monitoring of the Relativistic Magnetohydrodynamic Shock in the Crab Nebula
observer	Dr Koji Mori
object	The Crab Nebula
dtcycle	0
cycle	P
ra_targ	83.640417
dec_targ	22.016472
ra_nom	83.641482462101
dec_nom	22.028887367048
roll_nom	93.279411019454
revision	2
ontime	10181.400404572
liveltime	8956.1931778435
ontime7	10181.400404572
l2events	1118244



2 OBI

2.1 OBI

2.1.1 Images



2.1.2 Parameters

obi_num	0
ascdsver	7.6.7.1
caldbver	3.2.1
date	2006-03-20T11:37:53
revision	2

sched_exp_time	10000.000000
ontime	10190.152207136
ontime7	10190.152207136
l1events	1170185

2.1.3 Events

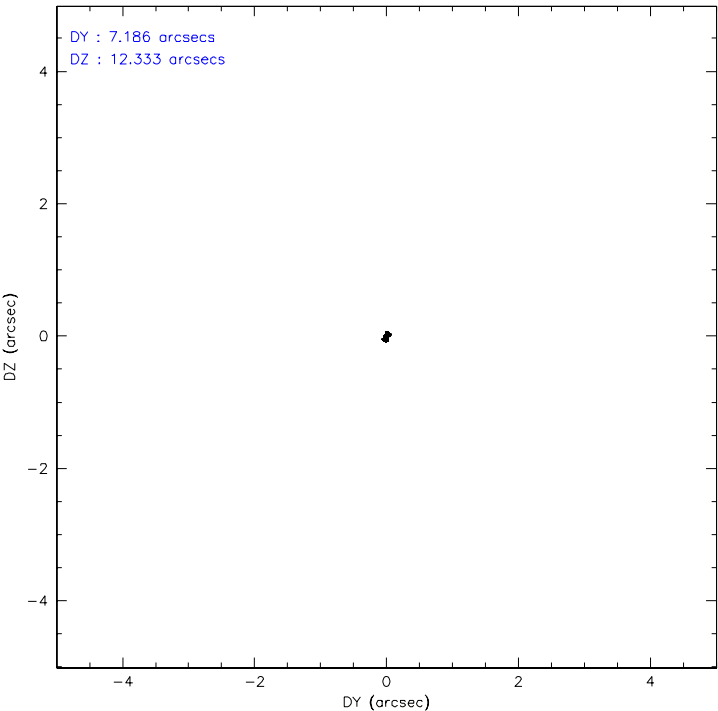
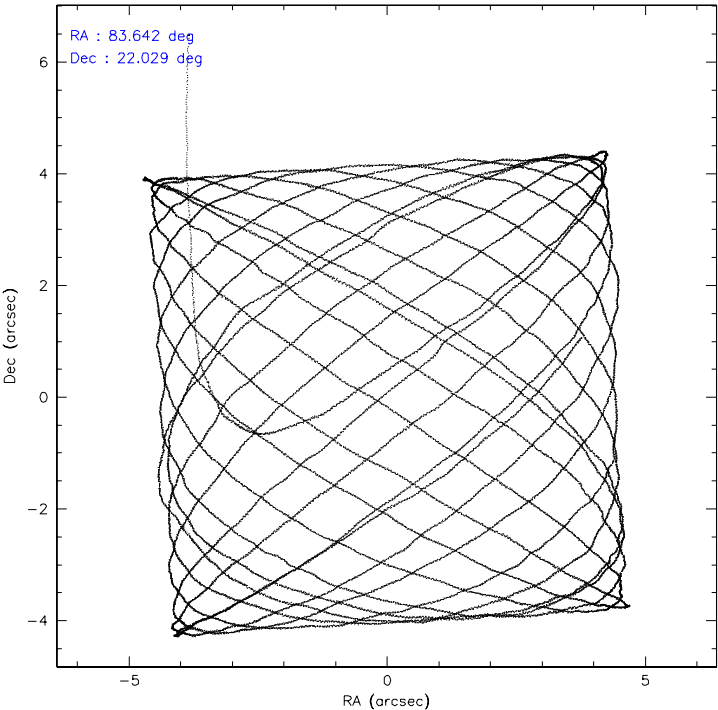
	ccd 7
level 1 events	1170185
rejected events	31556
rejected %	2%

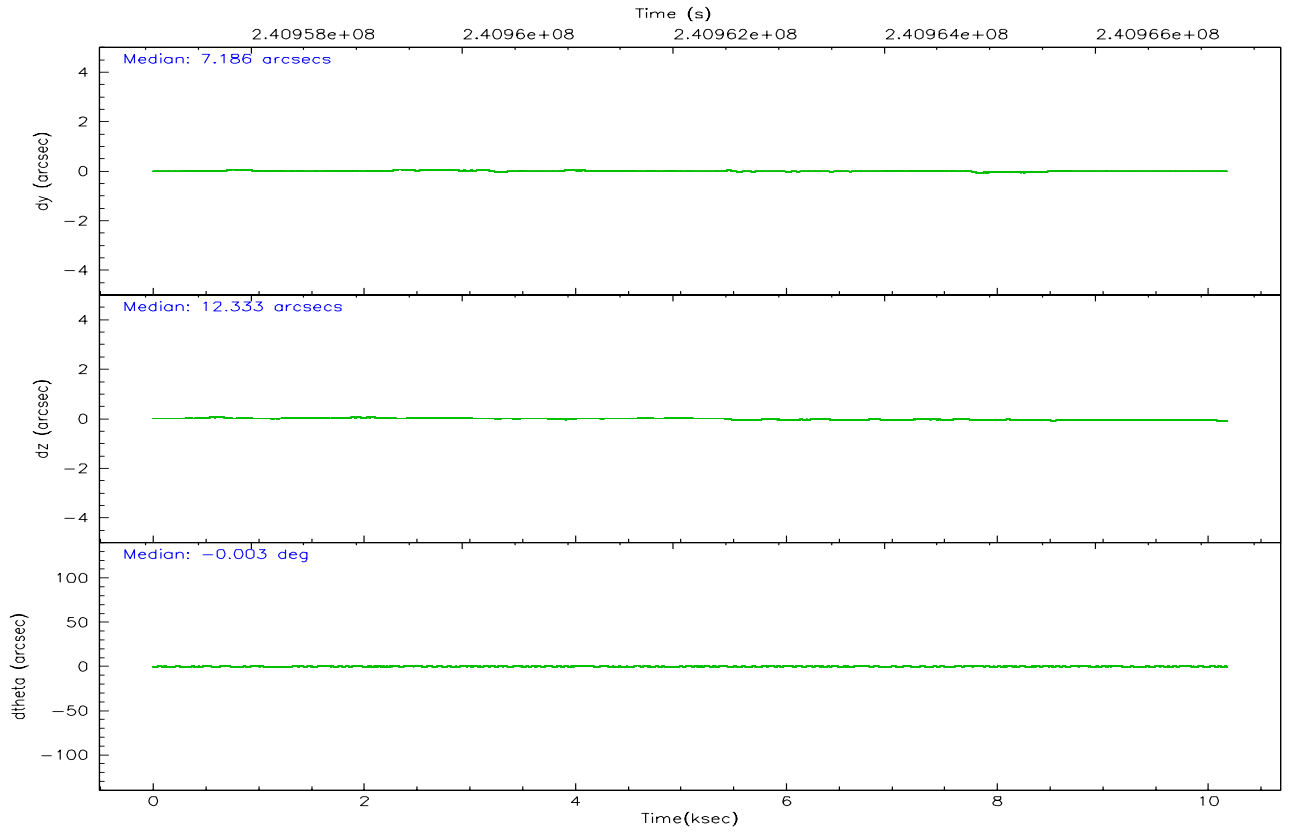
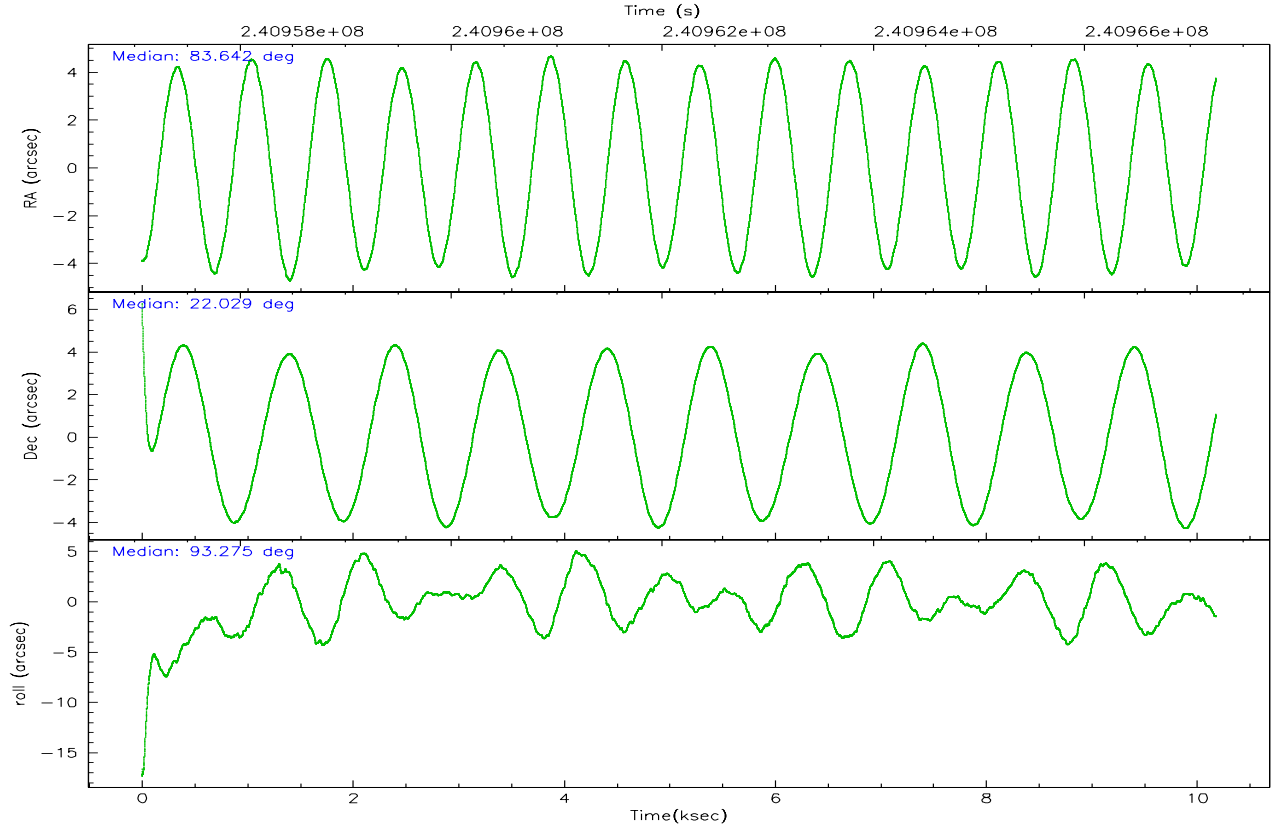
	ccd 7
grade 0 events	224876
	19%
grade 1 events	2685
	0%
grade 2 events	288467
	24%
grade 3 events	128651
	10%
grade 4 events	124554
	10%
grade 5 events	13284
	1%
grade 6 events	373117
	31%
grade 7 events	14551
	1%

2.2 Compared Parameters

Parameter	Planned	Actual	Parameter	Planned	Actual
Instrument	ACIS	ACIS	Obspar format version number	6	6
Detector	ACIS-7	ACIS-7	Obspar file type	PREDICTED	ACTUAL
Grating	HETG	HETG	Obspar update status	NONE	UPDATED
Data mode	GRADED	GRADED	On-chip summing requested	N	N
Observation mode	POINTING	POINTING	Subarray requested	CUSTOM	CUSTOM
Pointing RA	83.657933	83.64148246210088	Subarray start row	127	127
Pointing Dec	22.006341	22.02888736704817	Subarray row count	101	101
Pointing Roll	93.116642	93.27941101945416	Alternating exposures requested	N	N
Window start time	240451264.184000	240451264.184000	Primary exposure time	0.000000	0.3
Window stop time	241056064.184000	241056064.184000			
SIM focus pos (mm)	-0.684267	-0.6828225247311905			
SIM defocus (mm)	0	0.001444936568705701			
SIM translation stage pos (mm)	-182.132523	-182.1370004450064			
SIM translation stage offset (mm)	-8	-7.995522138001405			
Observation start time	240957249.184000	240956479.53565			
Observation start date	2005-08-20T20:33:05	2005-08-20T20:21:19			
Observation end time	240967249.184000	240968267.54869			
Observation end date	2005-08-20T23:19:45	2005-08-20T23:37:47			
Read mode	TIMED	TIMED			

2.3 Aspect



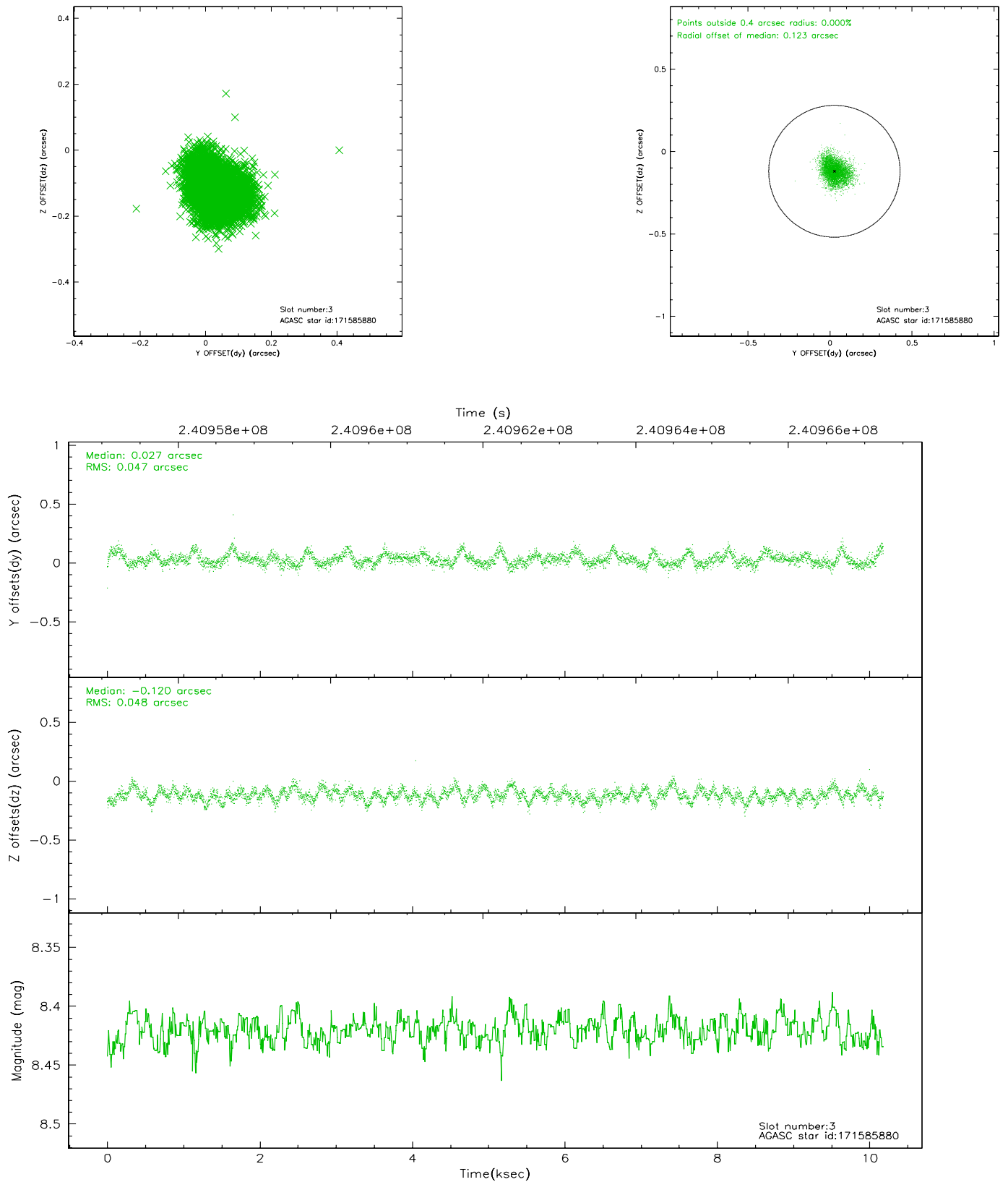


Slot Statistics

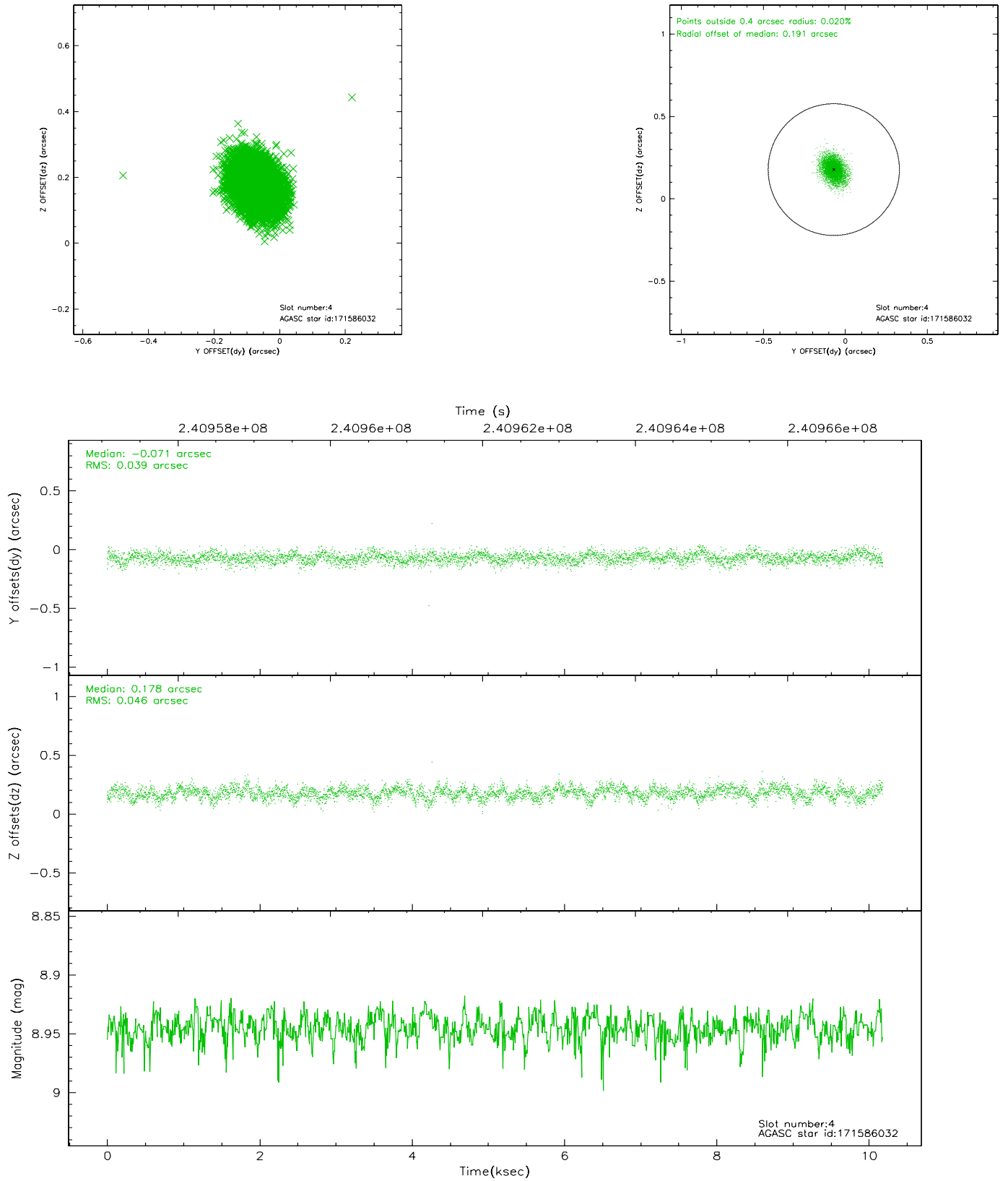
slot	status	id	mag	n_pts	med_dy	med_dz	dr1	dr2	ra	dec	mean_y	mean_z
0	FID	ACIS-S-2	7.08	2484	-0.042	-0.151	0.006	0.010	0.000000	0.000000	-759.43	-1898.49
1	FID	ACIS-S-4	7.18	2484	0.061	0.061	0.005	0.008	0.000000	0.000000	2153.73	9.55
2	FID	ACIS-S-5	7.22	2484	-0.050	0.098	0.006	0.010	0.000000	0.000000	-1811.59	3.90
3	GUIDE	171585880	8.42	4967	0.027	-0.120	0.071	0.116	83.676260	22.176319	608.15	-94.12
4	GUIDE	171586032	8.95	4966	-0.071	0.178	0.064	0.105	83.950197	22.083225	224.83	-988.22
5	GUIDE	171597832	9.16	4967	0.199	-0.236	0.087	0.142	83.183230	21.366702	-2209.84	1713.92
6	GUIDE	171721904	9.20	4961	-0.093	0.124	0.088	0.139	84.272676	22.116922	290.18	-2068.34
7	GUIDE	243941560	8.32	4962	-0.067	0.054	0.052	0.087	83.733264	22.568598	2007.91	-360.04

2.4 Star Slots

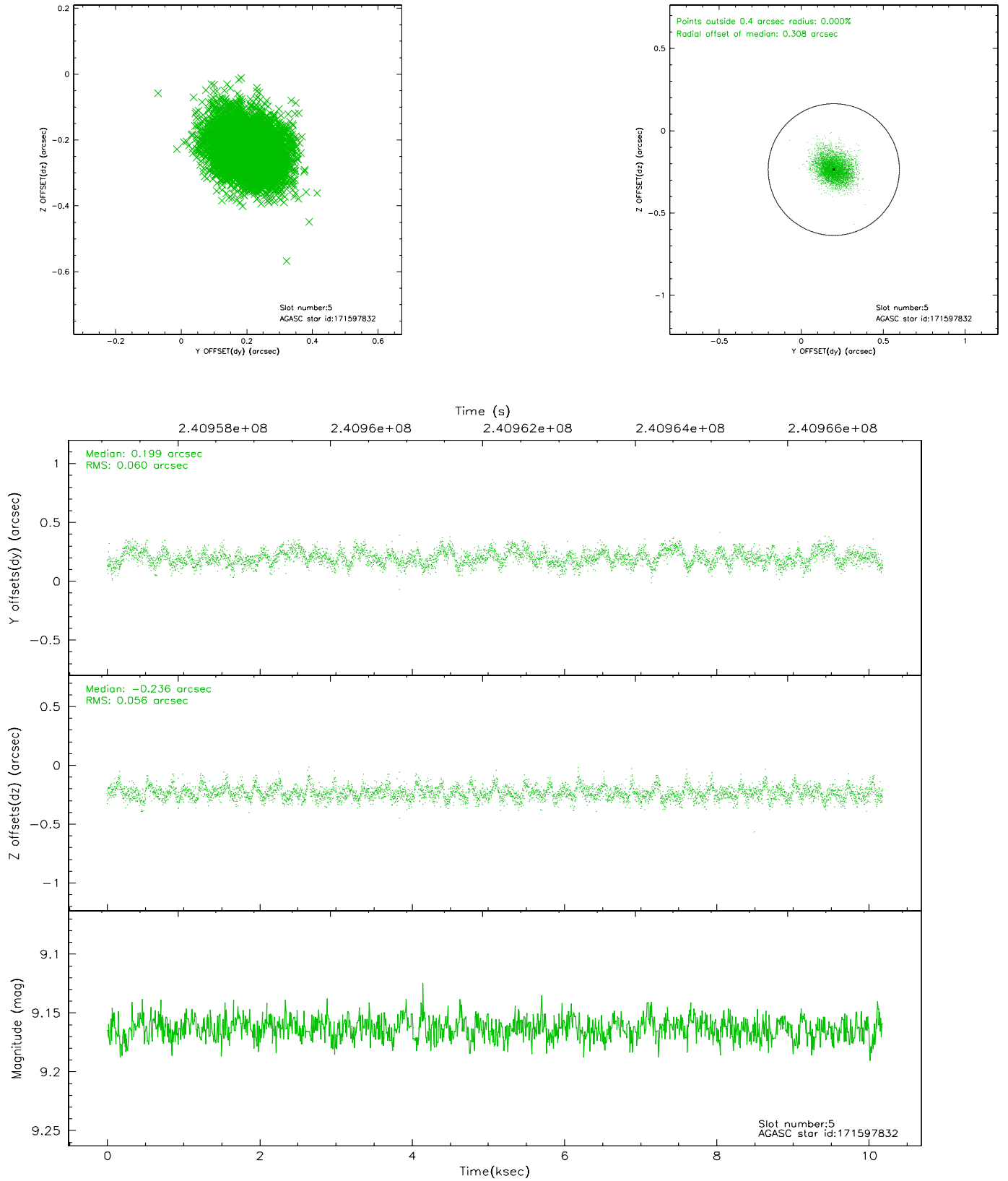
2.4.1 Slot 3



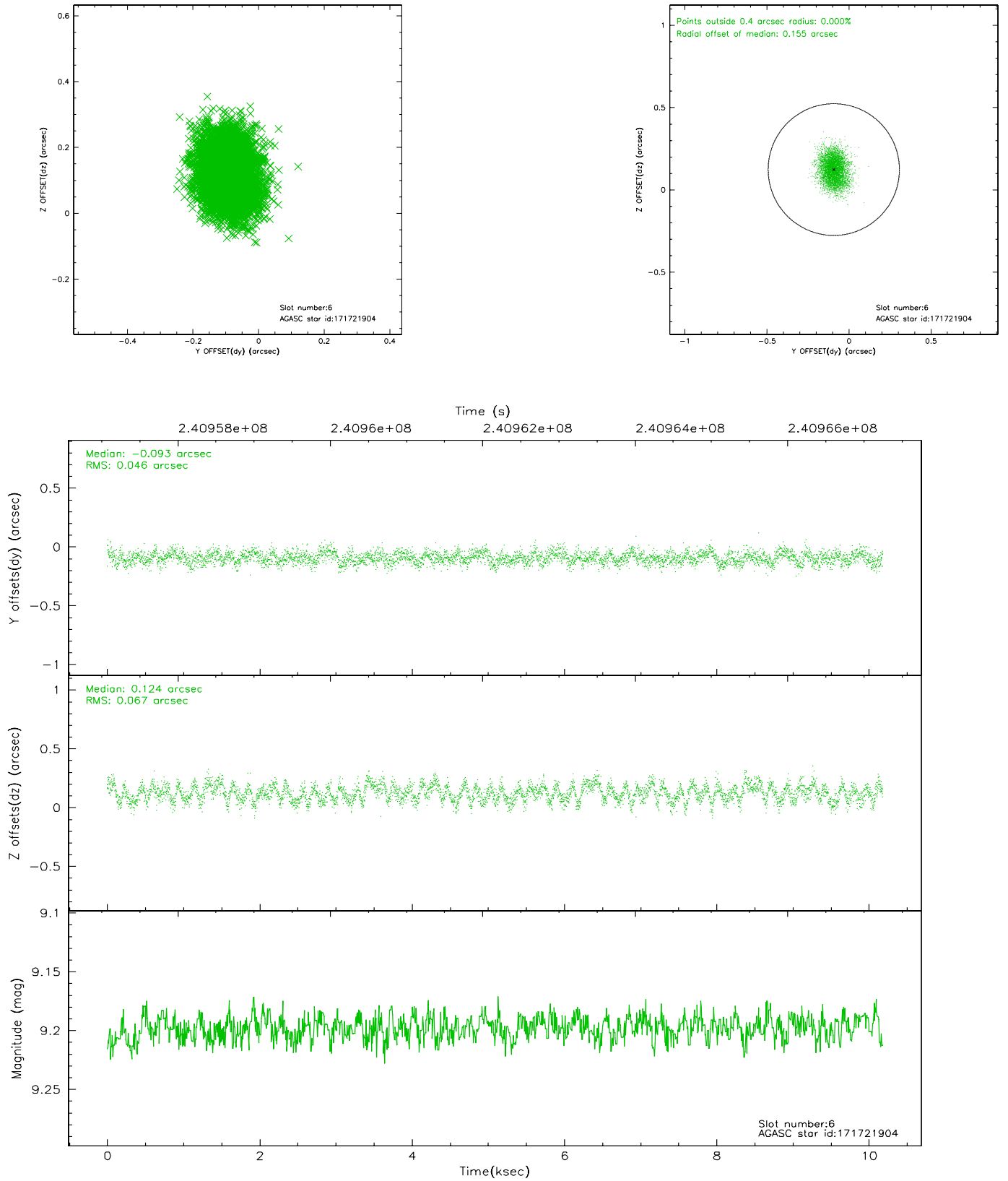
2.4.2 Slot 4



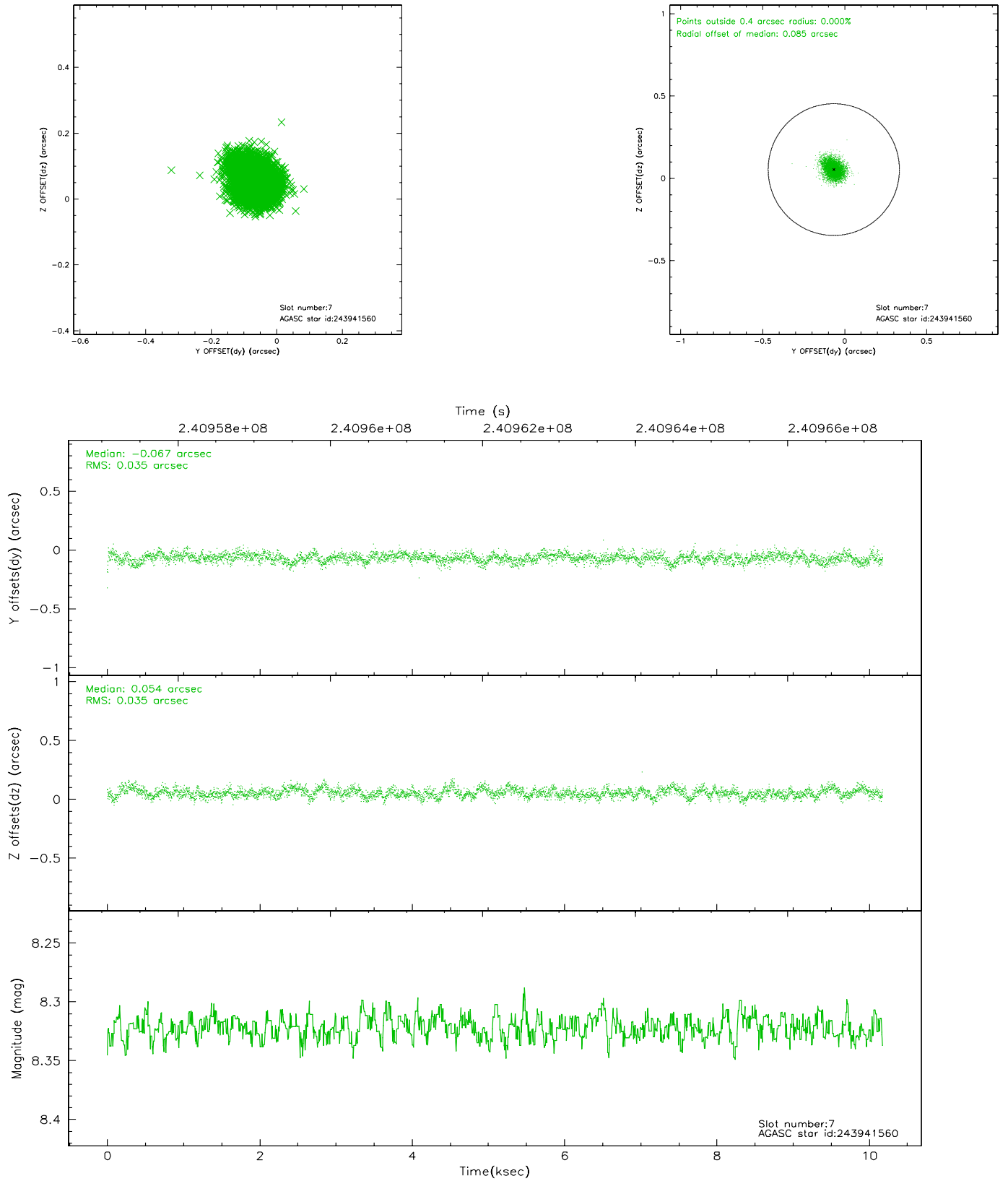
2.4.3 Slot 5



2.4.4 Slot 6

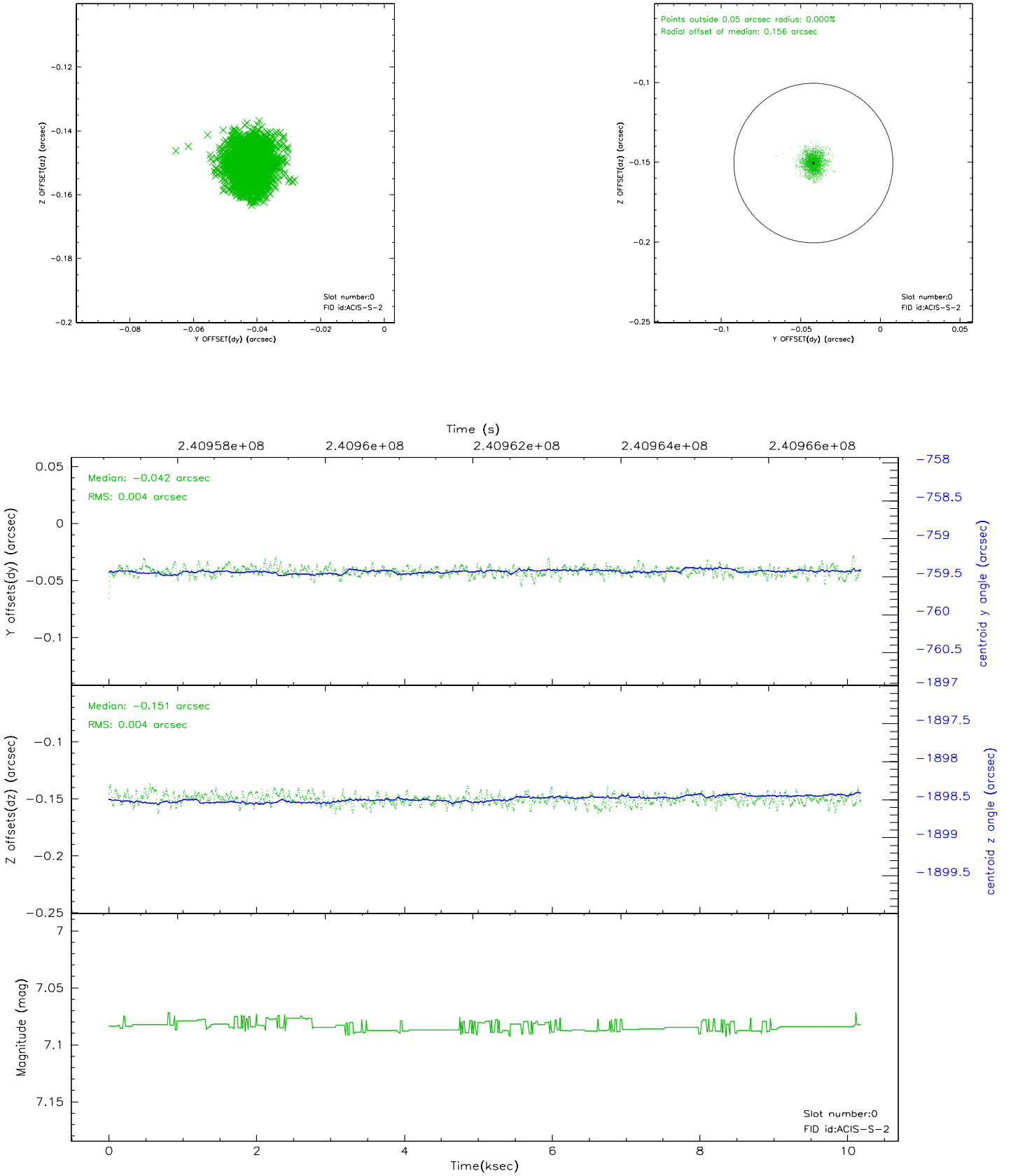


2.4.5 Slot 7

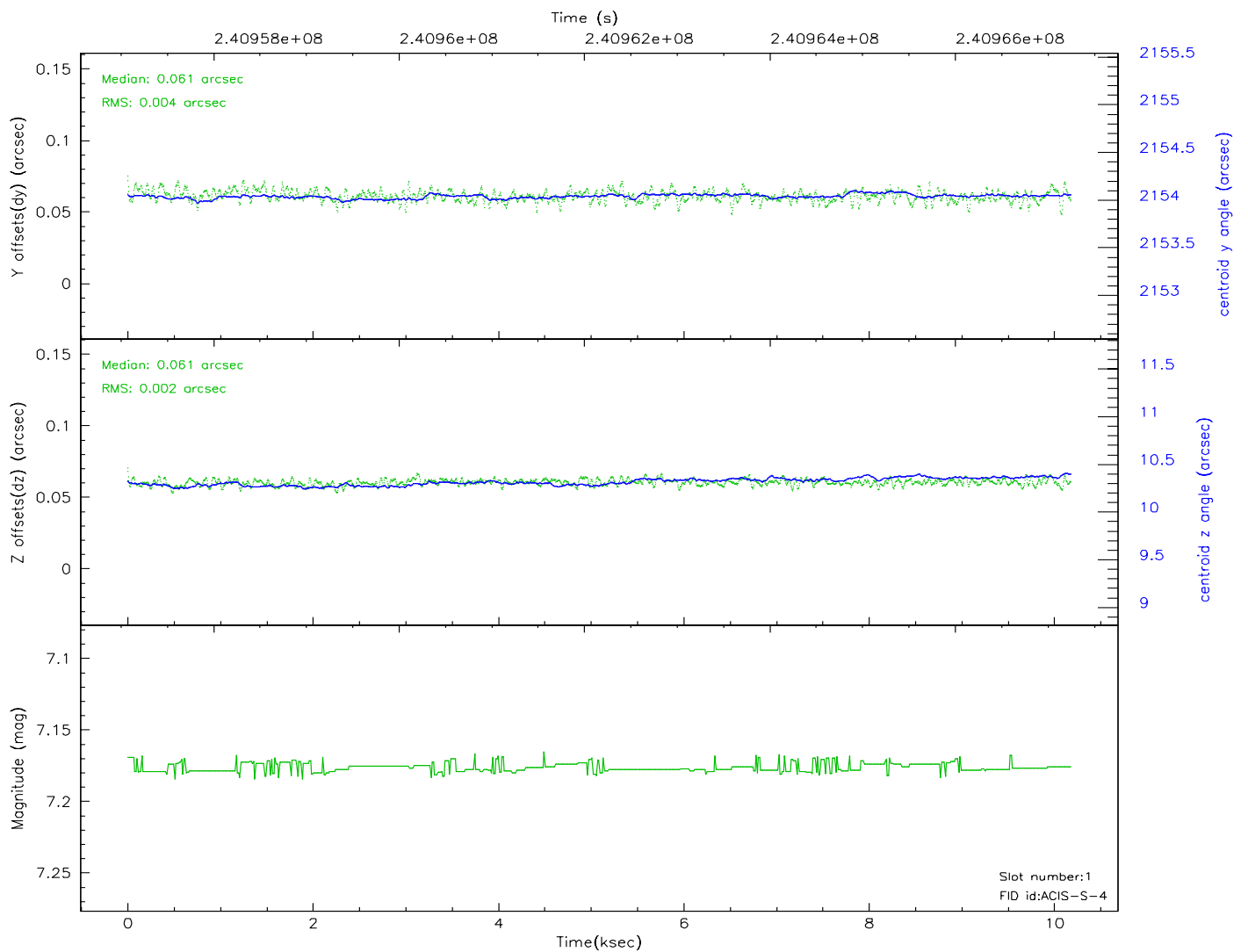
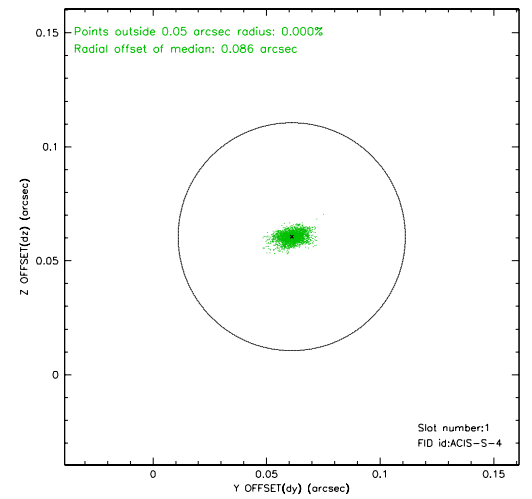
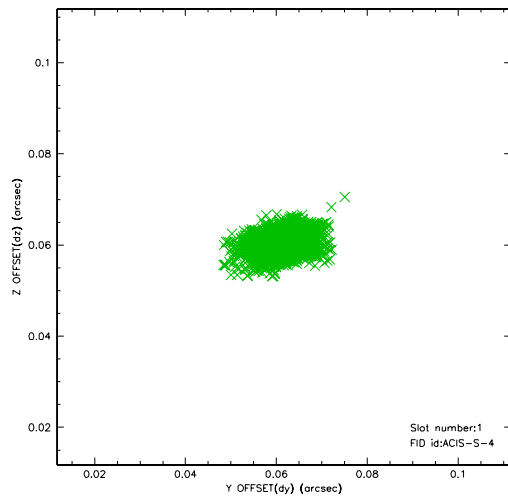


2.5 FID Slots

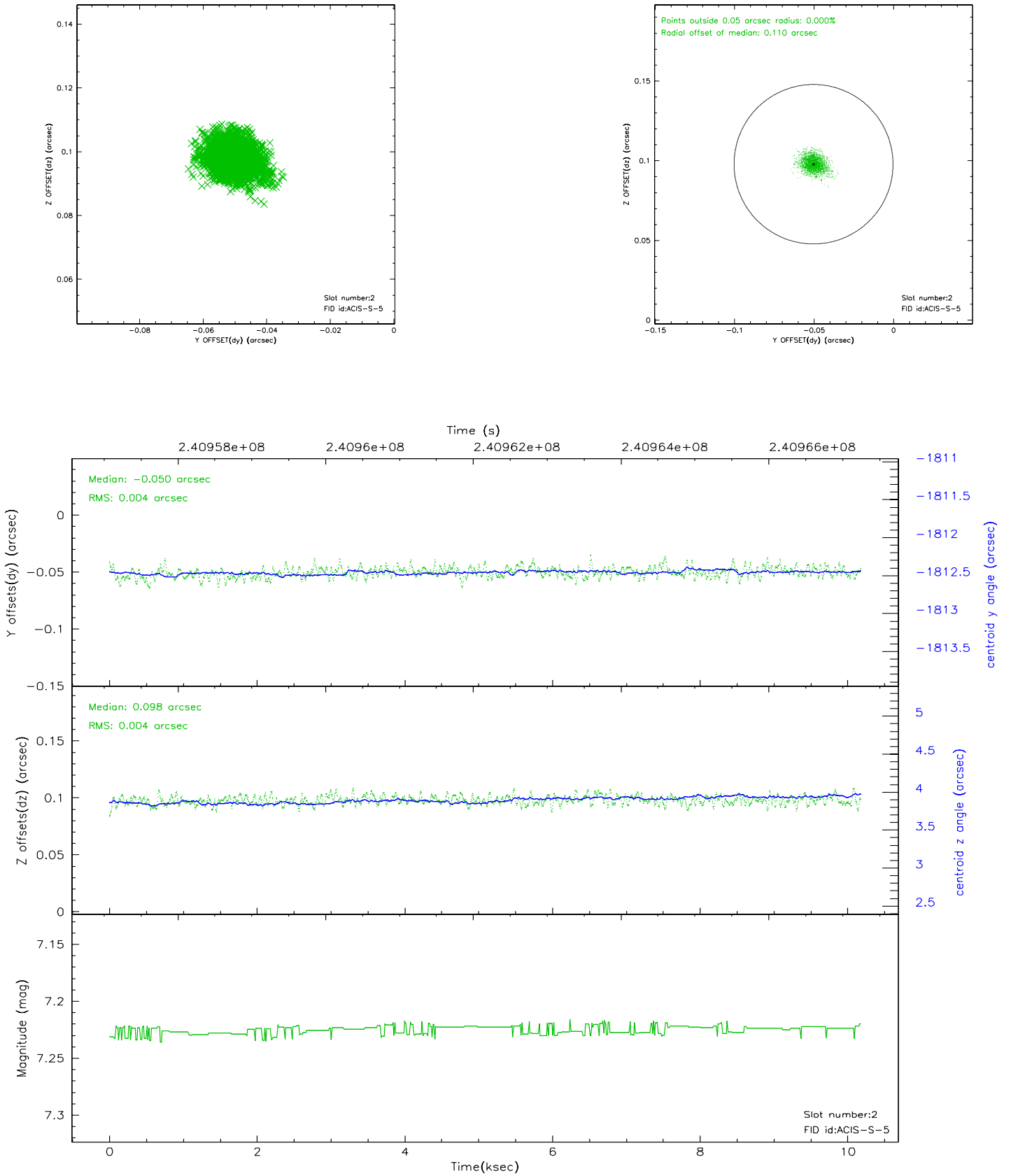
2.5.1 Slot 0



2.5.2 Slot 1



2.5.3 Slot 2



3 Gratings

3.1 HEG Arm



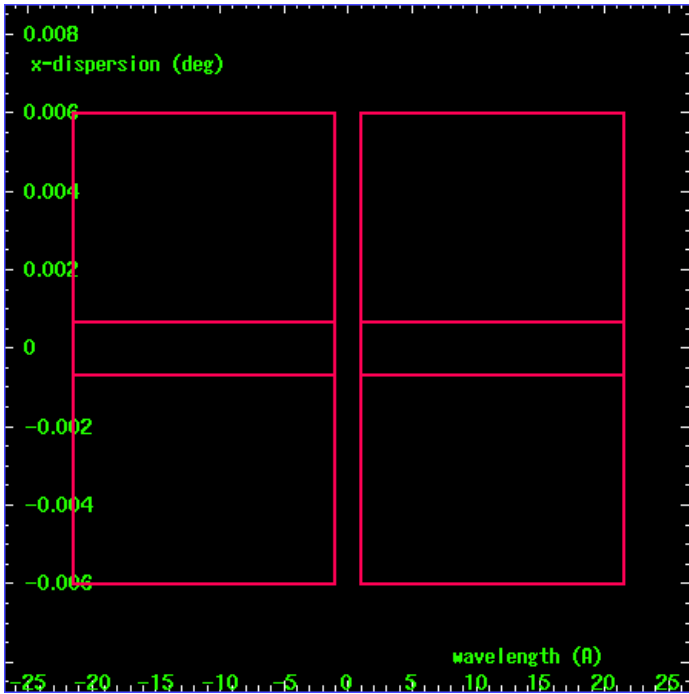
HEG Order Sort 123



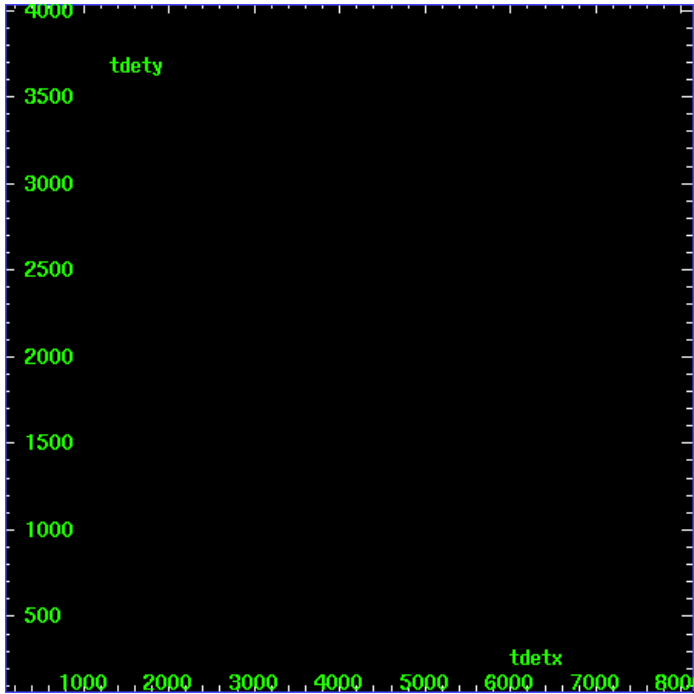
HEG Zero Order



HEG Order Sort ALL

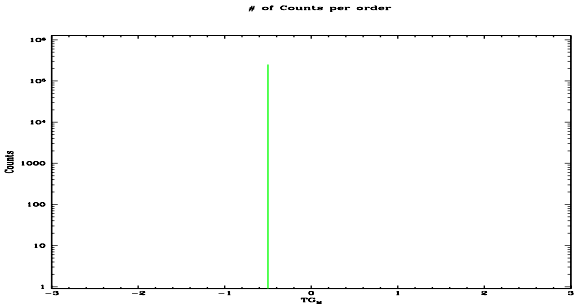


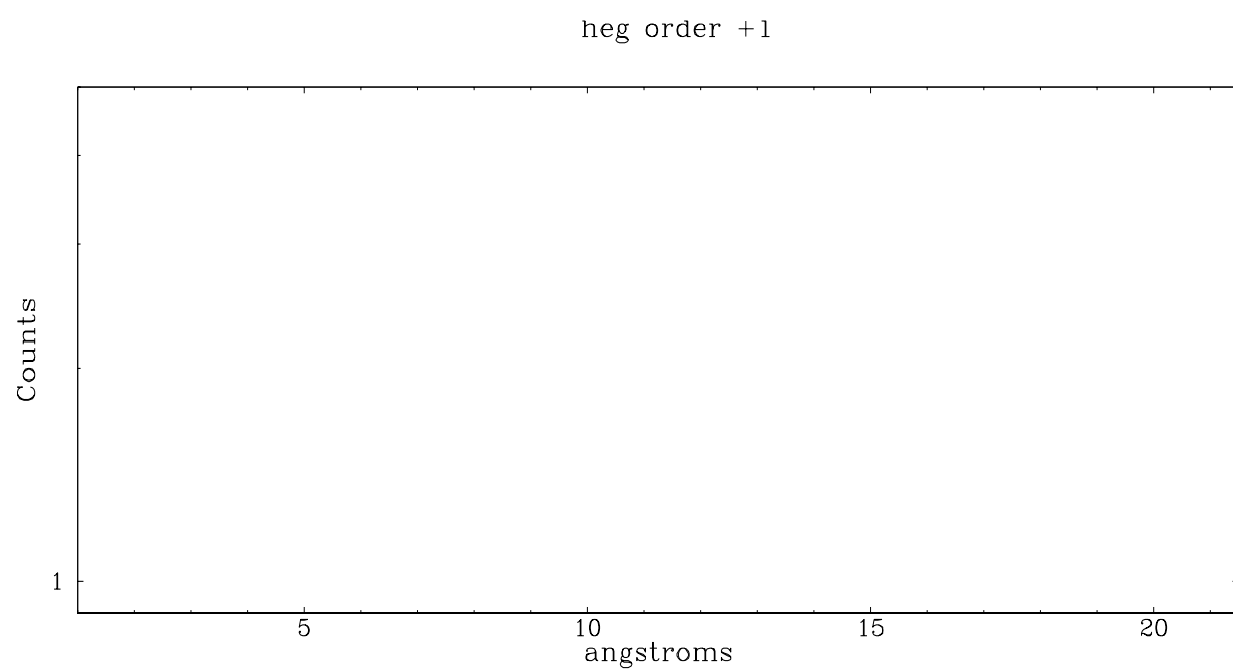
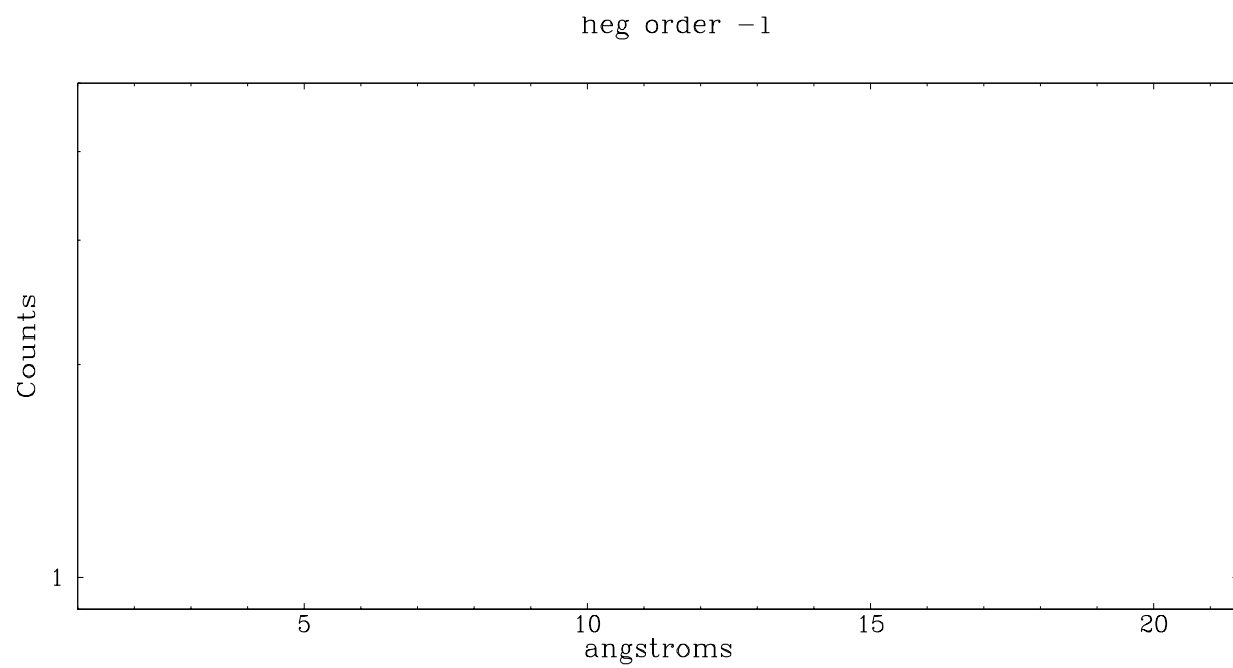
Spot Image HEG



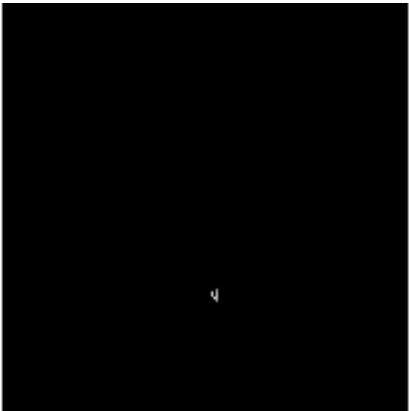
Full Detector HEG

	order -3	order -2	order -1	order 0	order 1	order 2	order 3
Events	0	0	0	253201	0	0	0

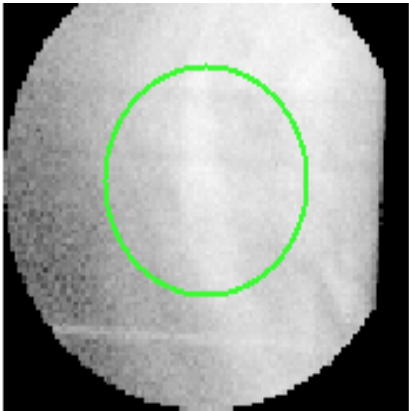




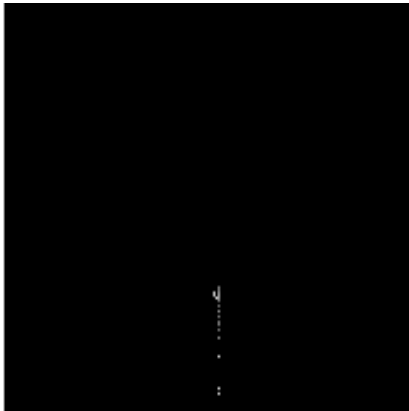
3.2 MEG Arm



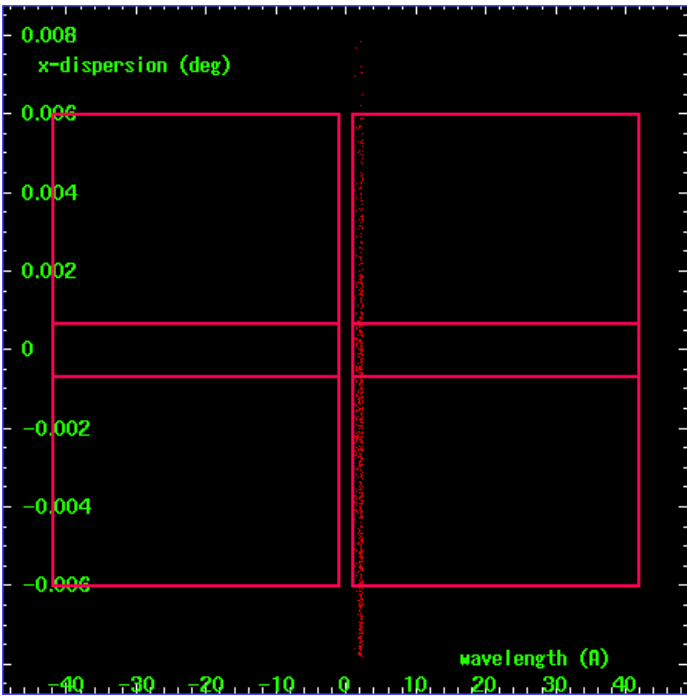
MEG Order Sort 123



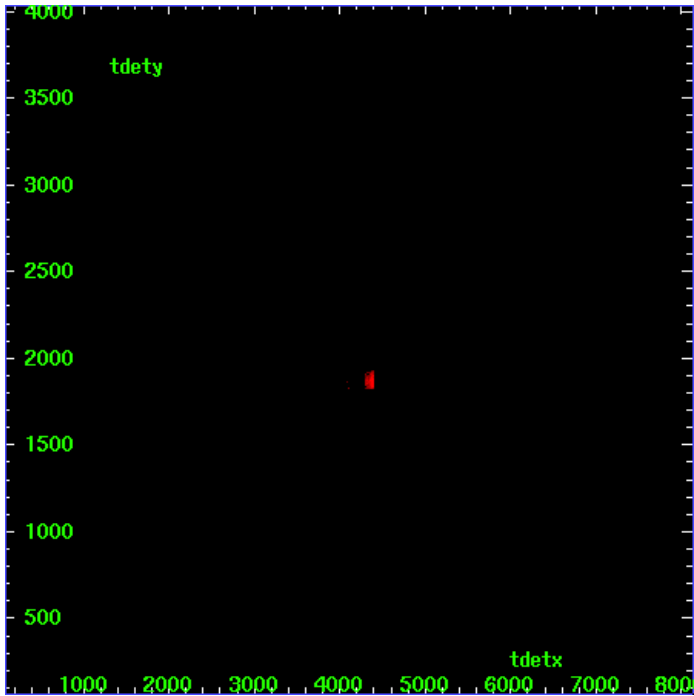
MEG Zero Order



MEG Order Sort ALL

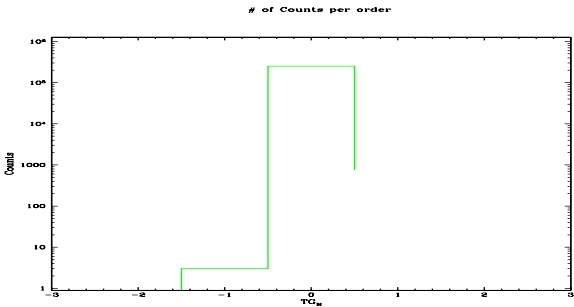


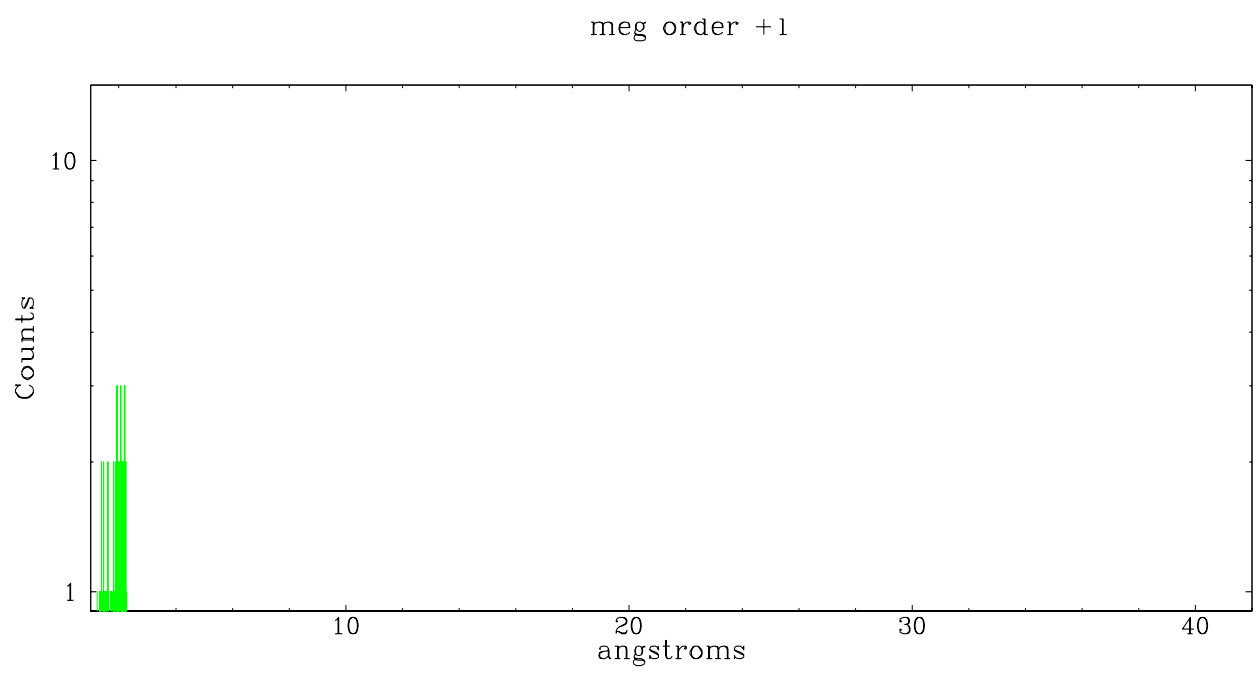
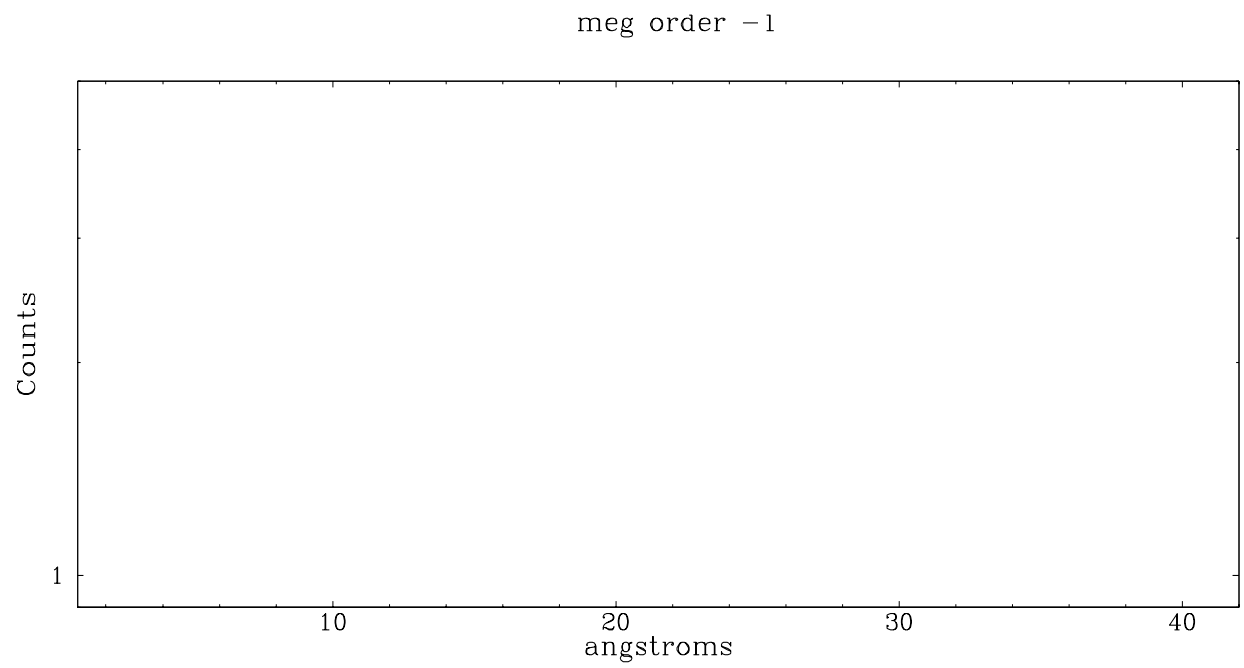
Spot Image MEG



Full Detector MEG

	order -3	order -2	order -1	order 0	order 1	order 2	order 3
Events	0	0	3	253201	753	0	0





A Summary

A.1 Status

V&V Scientist	Joy Nichols
V&V Date (YYYY-MM-DD)	2006.04.05
V&V Edition	1
V&V Disposition and Status	OK
V&V Charge Time	10.1814004

A.2 Comments

Charge time:

New charge time differs by more than 5% of existing charge time and the difference is not due to more Obis.

NEW CHARGE TIME = 10.181400 ks, 1 Obis

EXISTING CHARGE TIME = 8.956000 ks, 1 Obis.

=====

Window constraint met.