

V&V Reference Report

L2 ASCDS Version : 7.6.7

Observation 5550 - L2 Version 002
Chandra X-Ray Center

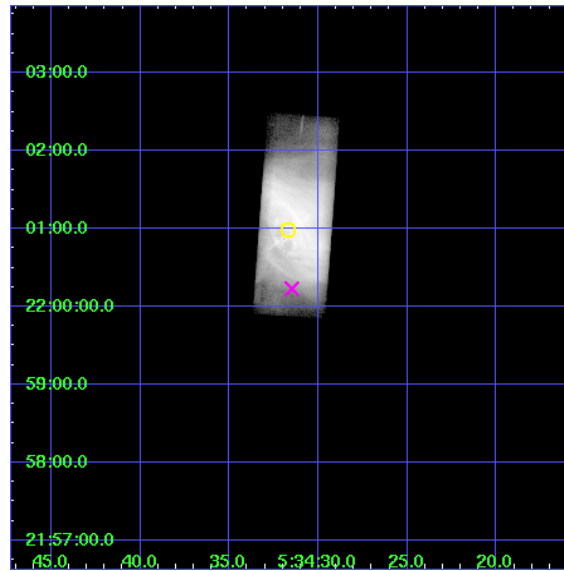
L2 Processing Date: Feb 21 2006

Contents

1	Front	2
2	OBI	3
2.1	OBI	3
2.1.1	Images	3
2.1.2	Parameters	4
2.1.3	Events	4
2.2	Compared Parameters	5
2.3	Aspect	6
2.4	Star Slots	9
2.4.1	Slot 3	9
2.4.2	Slot 4	10
2.4.3	Slot 5	11
2.4.4	Slot 6	12
2.4.5	Slot 7	13
2.5	FID Slots	14
2.5.1	Slot 0	14
2.5.2	Slot 1	15
2.5.3	Slot 2	16
3	Gratings	17
3.1	HEG Arm	17
3.2	MEG Arm	19
A	Summary	21
A.1	Status	21
A.2	Comments	21

1 Front

seq_num	500539
obs_id	5550
title	Monitoring of the Relativistic Magnetohydrodynamic Shock in the Crab Nebula
observer	Dr Koji Mori
object	The Crab Nebula
dtcycle	0
cycle	P
ra_targ	83.632083
dec_targ	22.016472
ra_nom	83.631246359346
dec_nom	22.004052870086
roll_nom	274.24263896574
revision	2
ontime	10681.500424445
livetime	9396.112266401
ontime7	10681.500424445
l2events	2788139

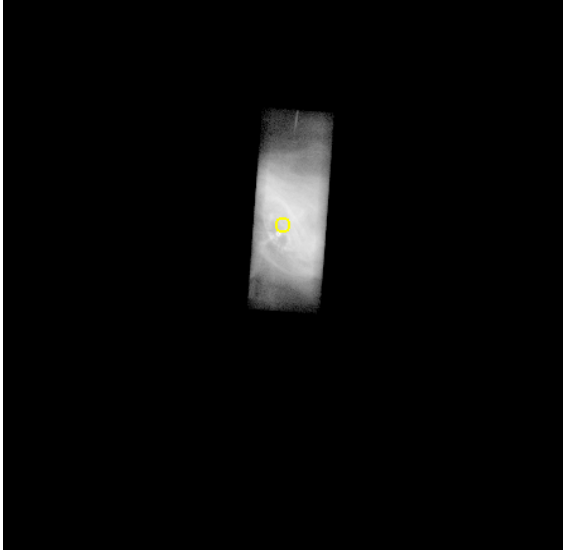


2 OBI

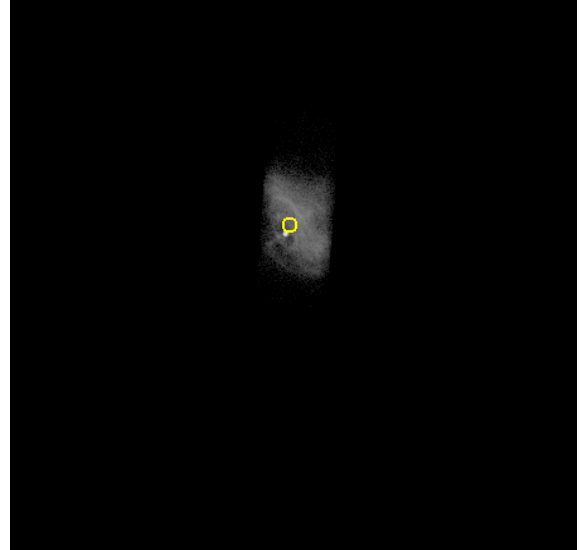
2.1 OBI

2.1.1 Images

Level 1 Image



Level 1 Bad Events



2.1.2 Parameters

obi_num	1
ascdsver	7.6.7
caldbver	3.2.1
date	2006-02-21T13:46:38
revision	2

sched_exp_time	10500.000000
ontime	10703.793013096
ontime7	10703.793013096
l1events	2933460

2.1.3 Events

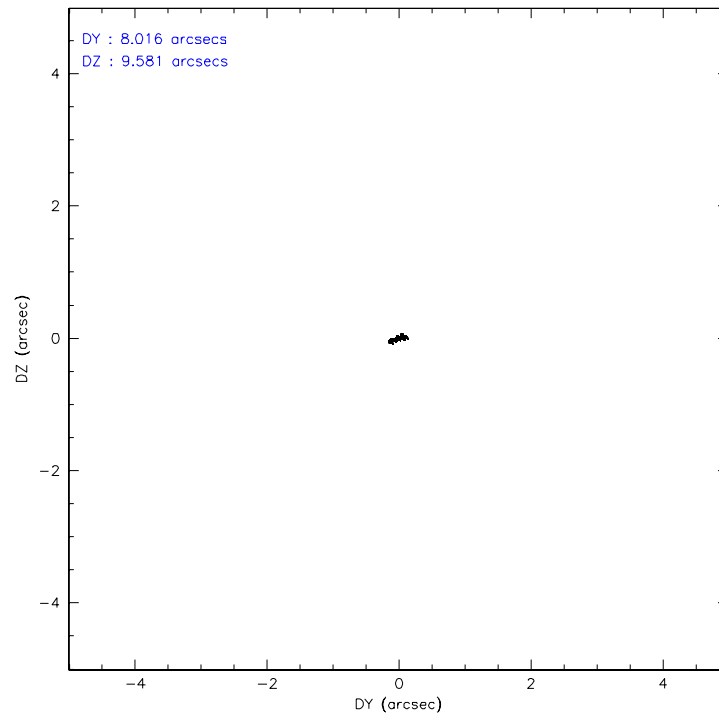
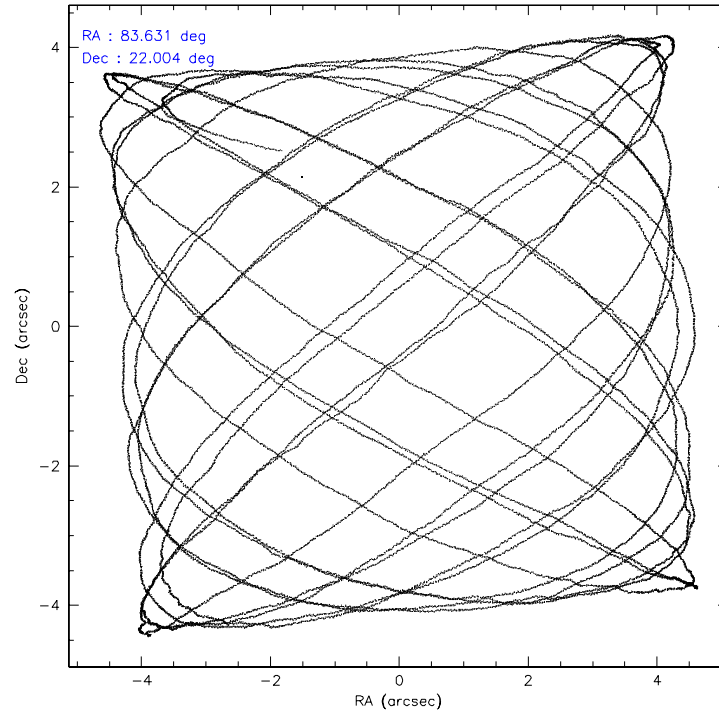
	ccd 7
level 1 events	2933460
rejected events	113929
rejected %	3%

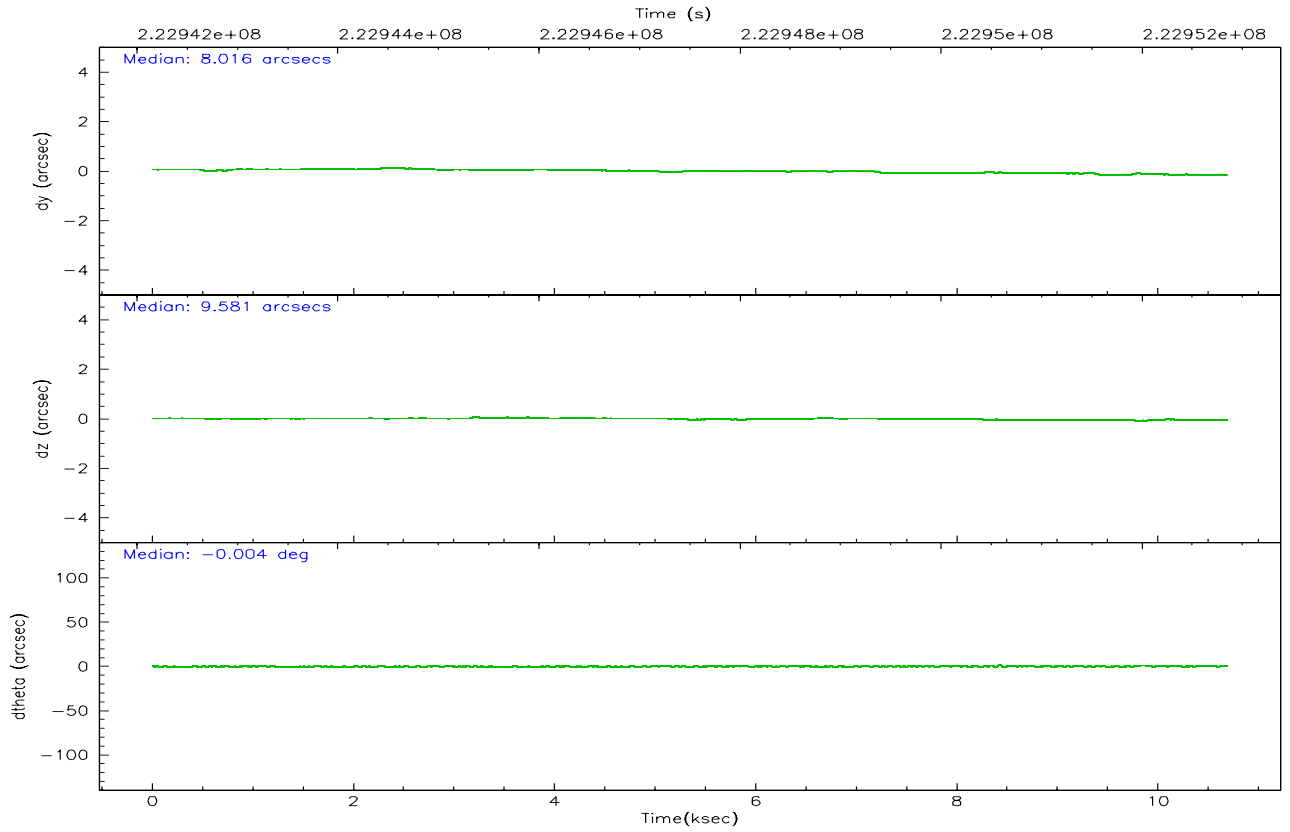
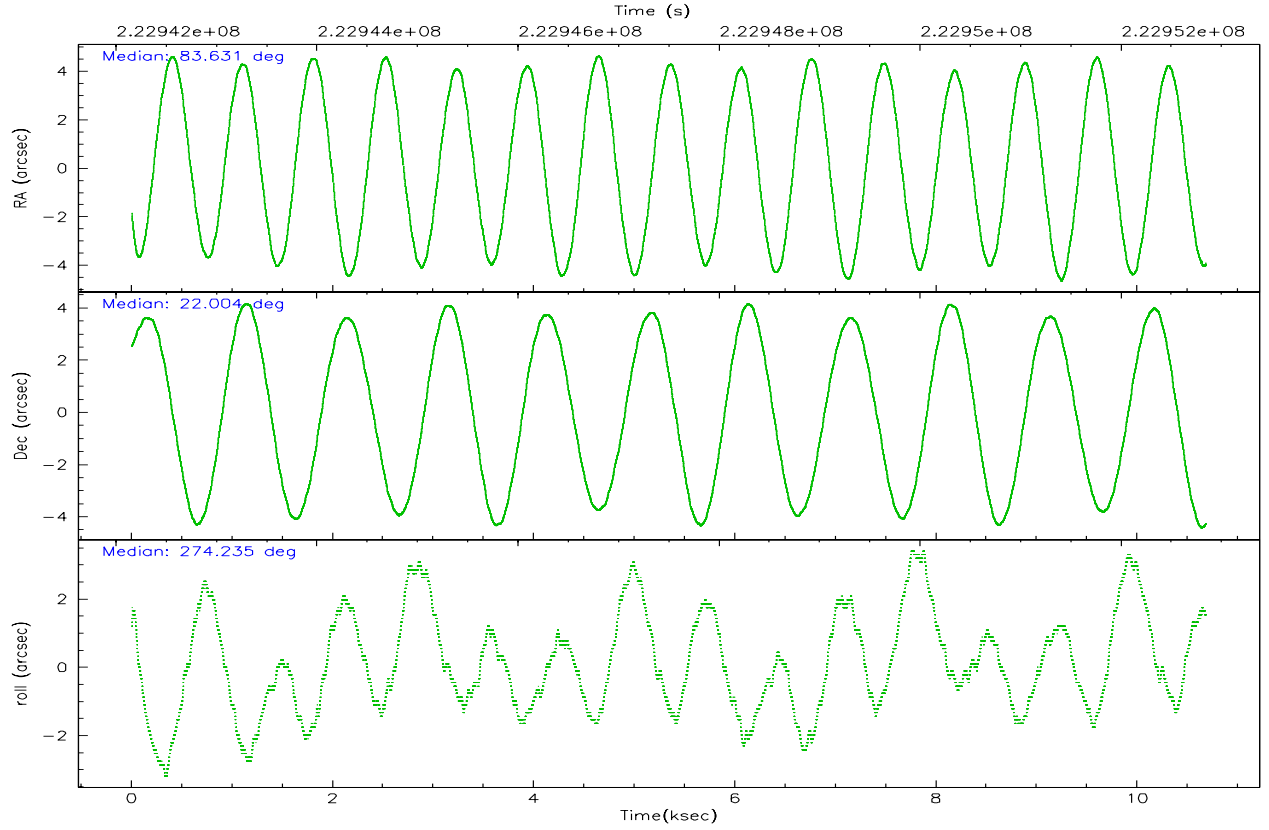
	ccd 7
grade 0 events	574261
	19%
grade 1 events	10987
	0%
grade 2 events	722267
	24%
grade 3 events	322697
	11%
grade 4 events	310069
	10%
grade 5 events	44942
	1%
grade 6 events	896100
	30%
grade 7 events	52137
	1%

2.2 Compared Parameters

Parameter	Planned	Actual	Parameter	Planned	Actual
Instrument	ACIS	ACIS	Obspar format version number	6	6
Detector	ACIS-7	ACIS-7	Obspar file type	PREDICTED	ACTUAL
Grating	HETG	HETG	Obspar update status	NONE	UPDATED
Data mode	GRADED	GRADED	On-chip summing requested	N	N
Observation mode	POINTING	POINTING	Subarray requested	CUSTOM	CUSTOM
Pointing RA	83.614382	83.63124635934591	Subarray start row	127	127
Pointing Dec	22.026325	22.00405287008621	Subarray row count	101	101
Pointing Roll	274.092330	274.2426389657435	Alternating exposures requested	N	N
Window start time	222307264.184000	222307264.184000	Primary exposure time	0.000000	0.3
Window stop time	222912064.184000	222912064.184000			
SIM focus pos (mm)	-0.684267	-0.6828225247311905			
SIM defocus (mm)	0	0.001444936568705701			
SIM translation stage pos (mm)	-182.132523	-182.1370004450064			
SIM translation stage offset (mm)	-8	-7.995522138001405			
Observation start time	222942350.184000	222941654.76543			
Observation start date	2005-01-24T08:24:46	2005-01-24T08:14:14			
Observation end time	222952850.184000	222953691.85348			
Observation end date	2005-01-24T11:19:46	2005-01-24T11:34:51			
Read mode	TIMED	TIMED			

2.3 Aspect



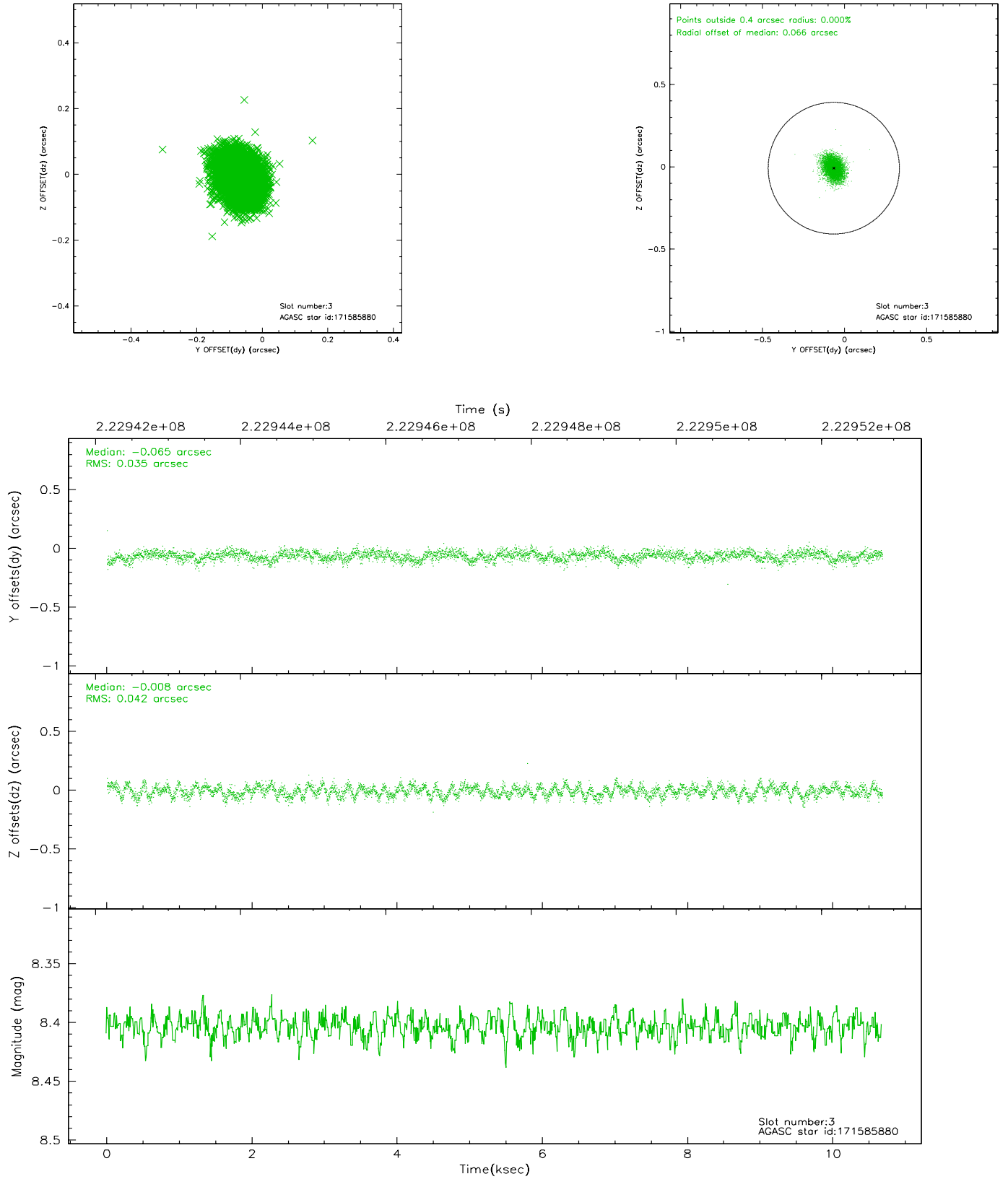


Slot Statistics

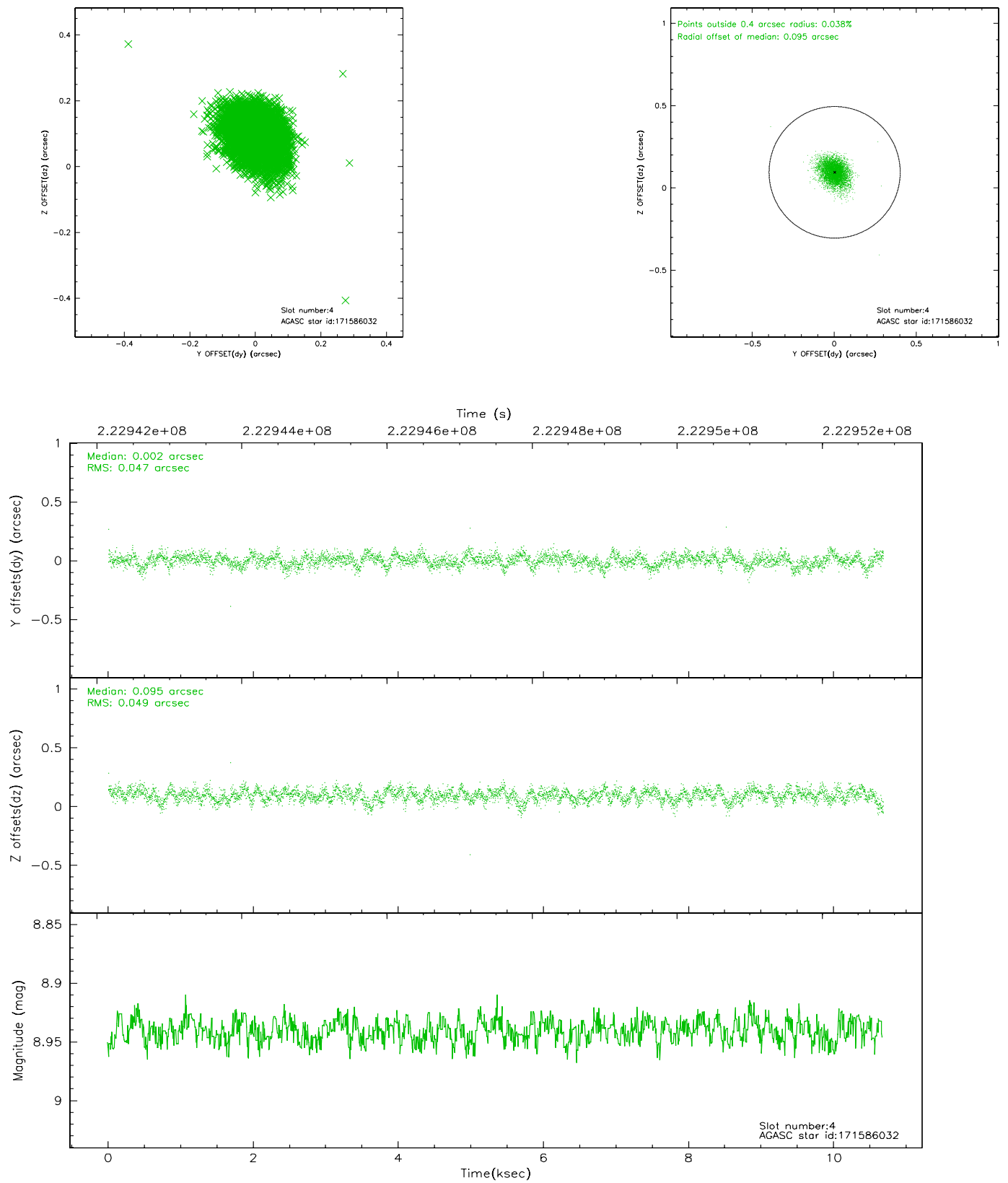
slot	status	id	mag	n_pts	med_dy	med_dz	dr1	dr2	ra	dec	mean_y	mean_z
0	FID	ACIS-S-2	7.09	2606	-0.050	-0.064	0.006	0.010	0.000000	0.000000	-760.26	-1895.59
1	FID	ACIS-S-4	7.18	2606	0.062	0.041	0.005	0.009	0.000000	0.000000	2152.90	12.42
2	FID	ACIS-S-5	7.22	2606	-0.043	0.031	0.006	0.011	0.000000	0.000000	-1812.47	6.63
3	GUIDE	171585880	8.40	5210	-0.065	-0.008	0.058	0.093	83.676260	22.176319	-523.69	244.42
4	GUIDE	171586032	8.94	5212	0.002	0.095	0.071	0.117	83.950197	22.083225	-125.51	1132.42
5	GUIDE	171597832	9.16	5211	0.111	-0.055	0.096	0.147	83.183230	21.366702	2264.09	-1610.54
6	GUIDE	171721904	9.22	5177	0.080	-0.006	0.107	0.166	84.272676	22.116922	-172.81	2213.35
7	GUIDE	243941560	8.28	5210	-0.118	-0.017	0.082	0.122	83.733264	22.568598	-1918.96	533.83

2.4 Star Slots

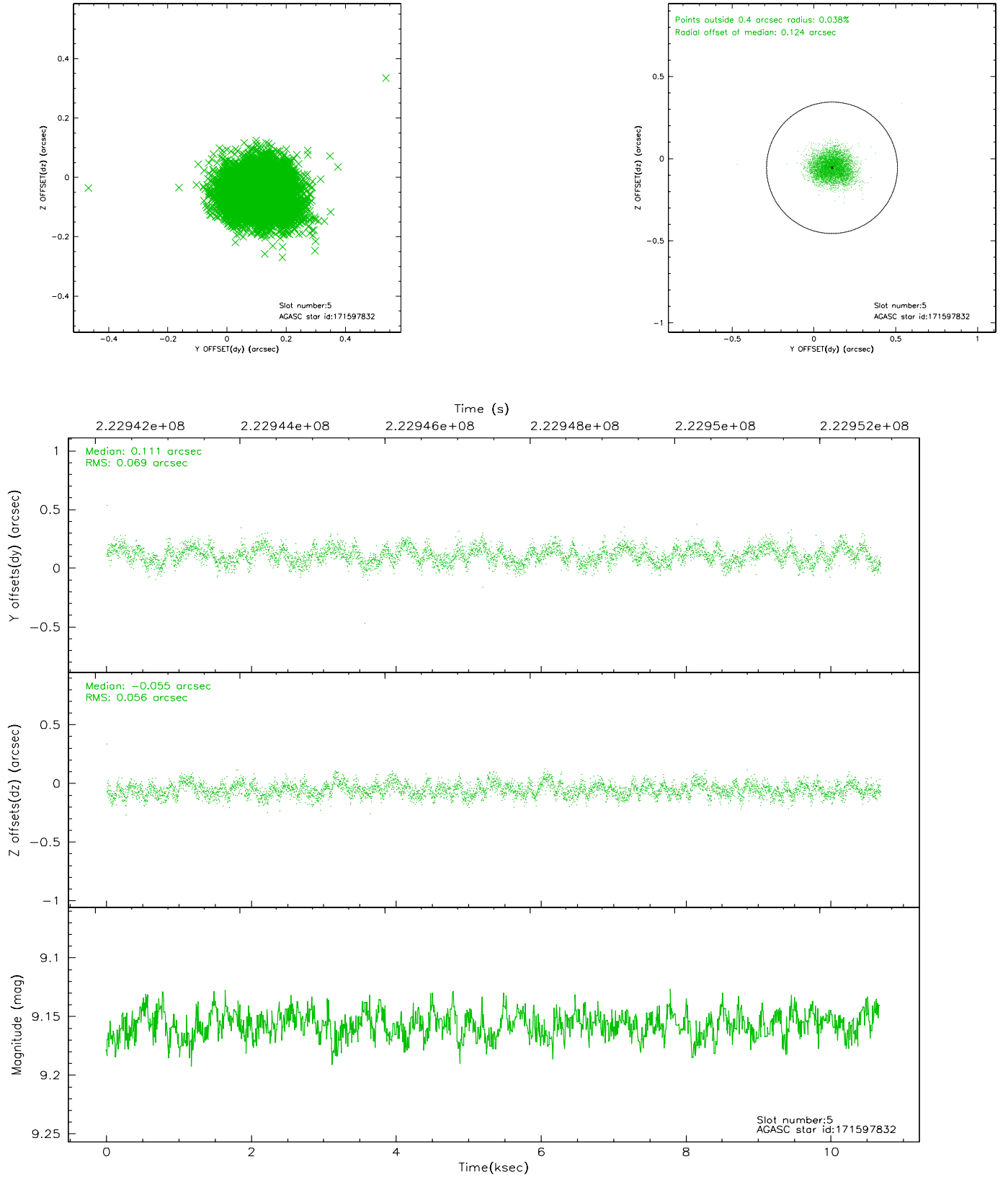
2.4.1 Slot 3



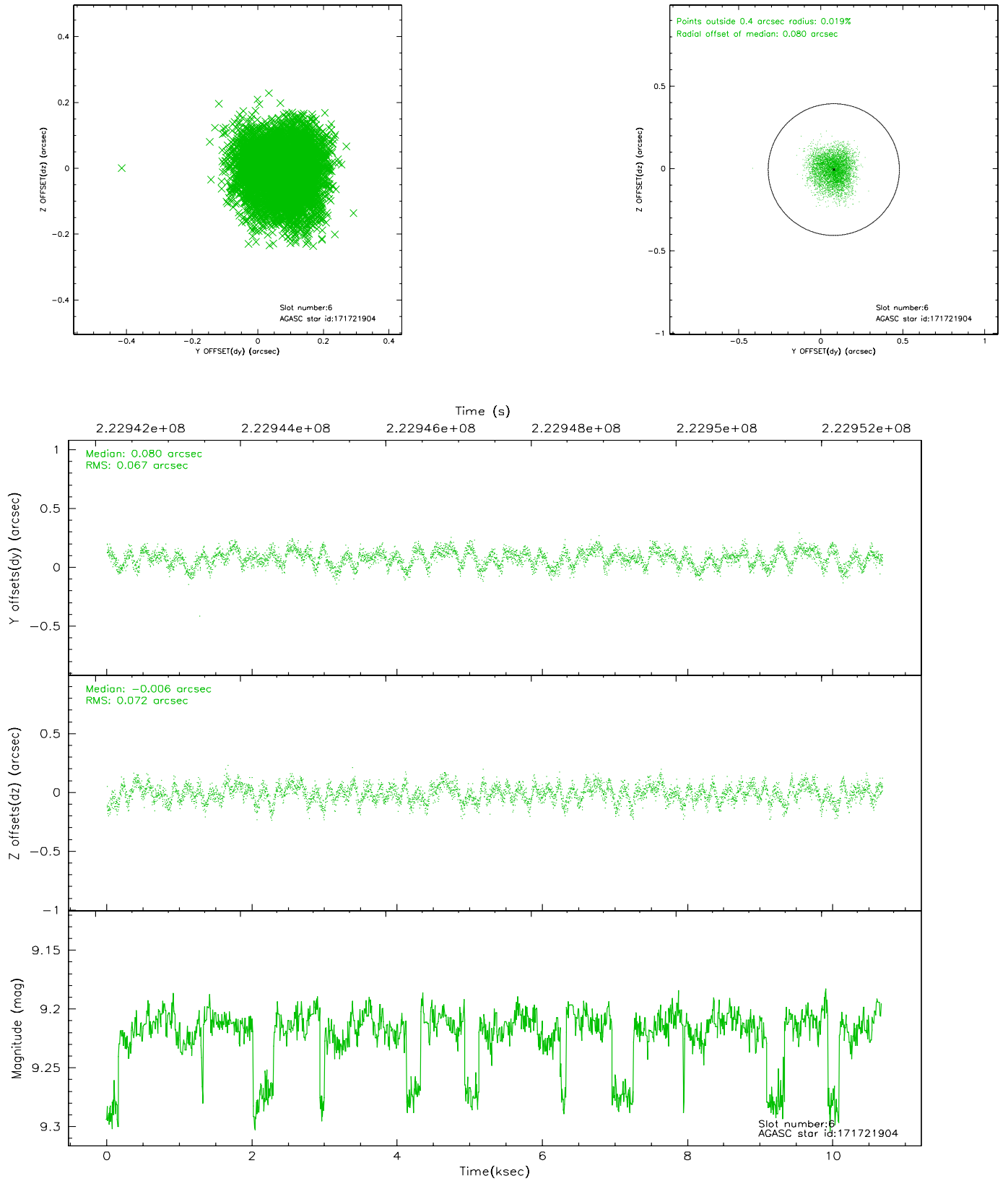
2.4.2 Slot 4



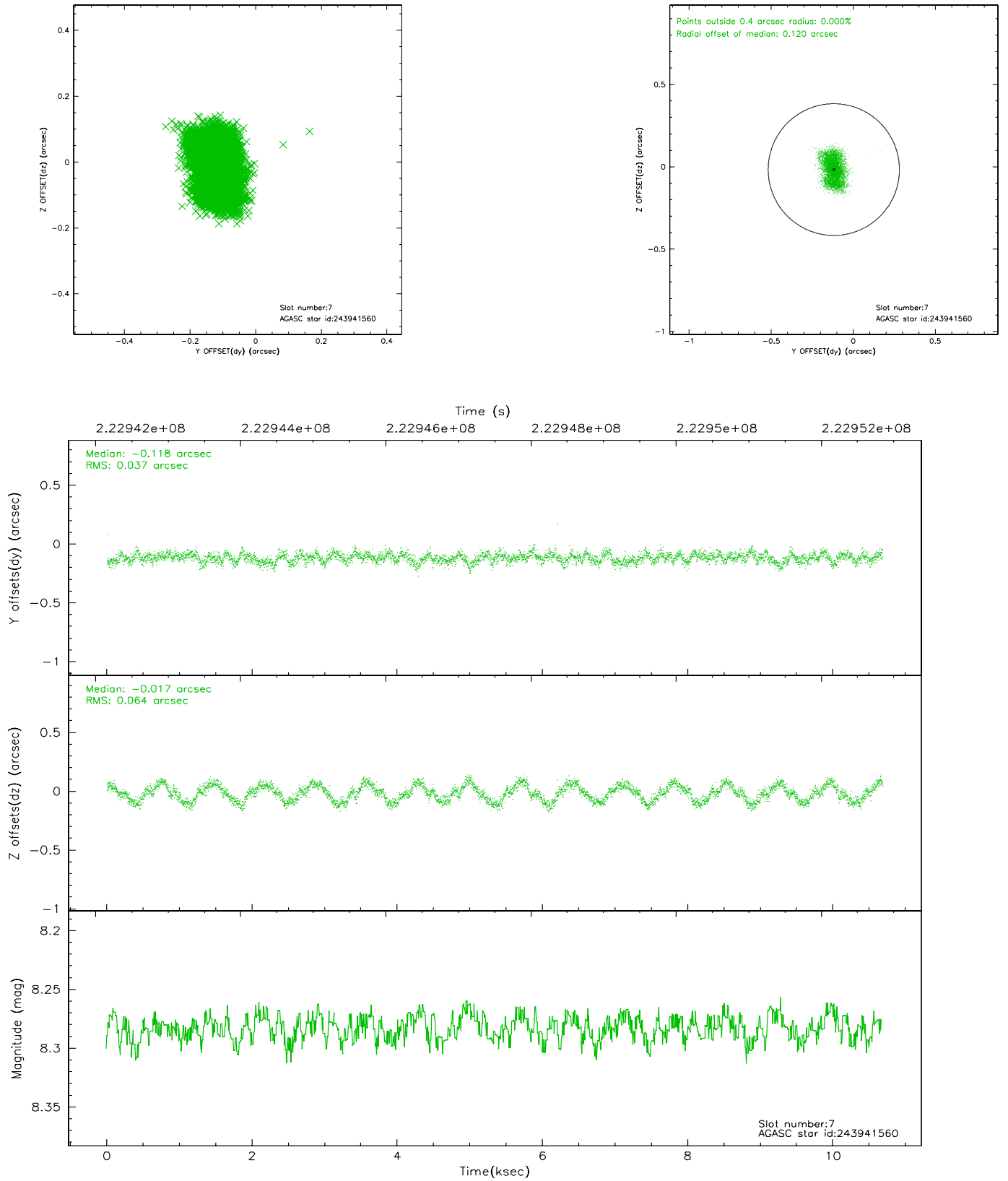
2.4.3 Slot 5



2.4.4 Slot 6

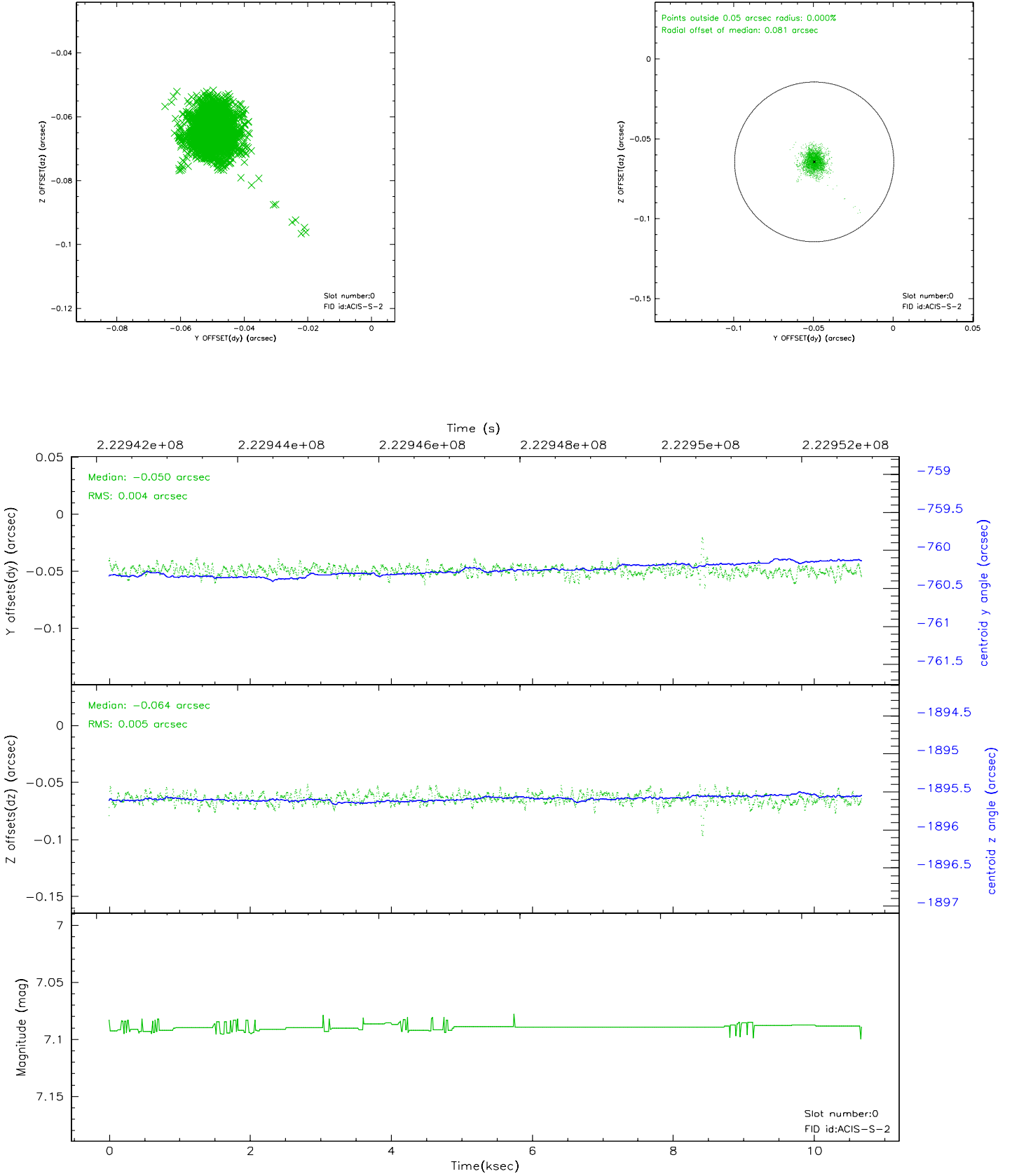


2.4.5 Slot 7

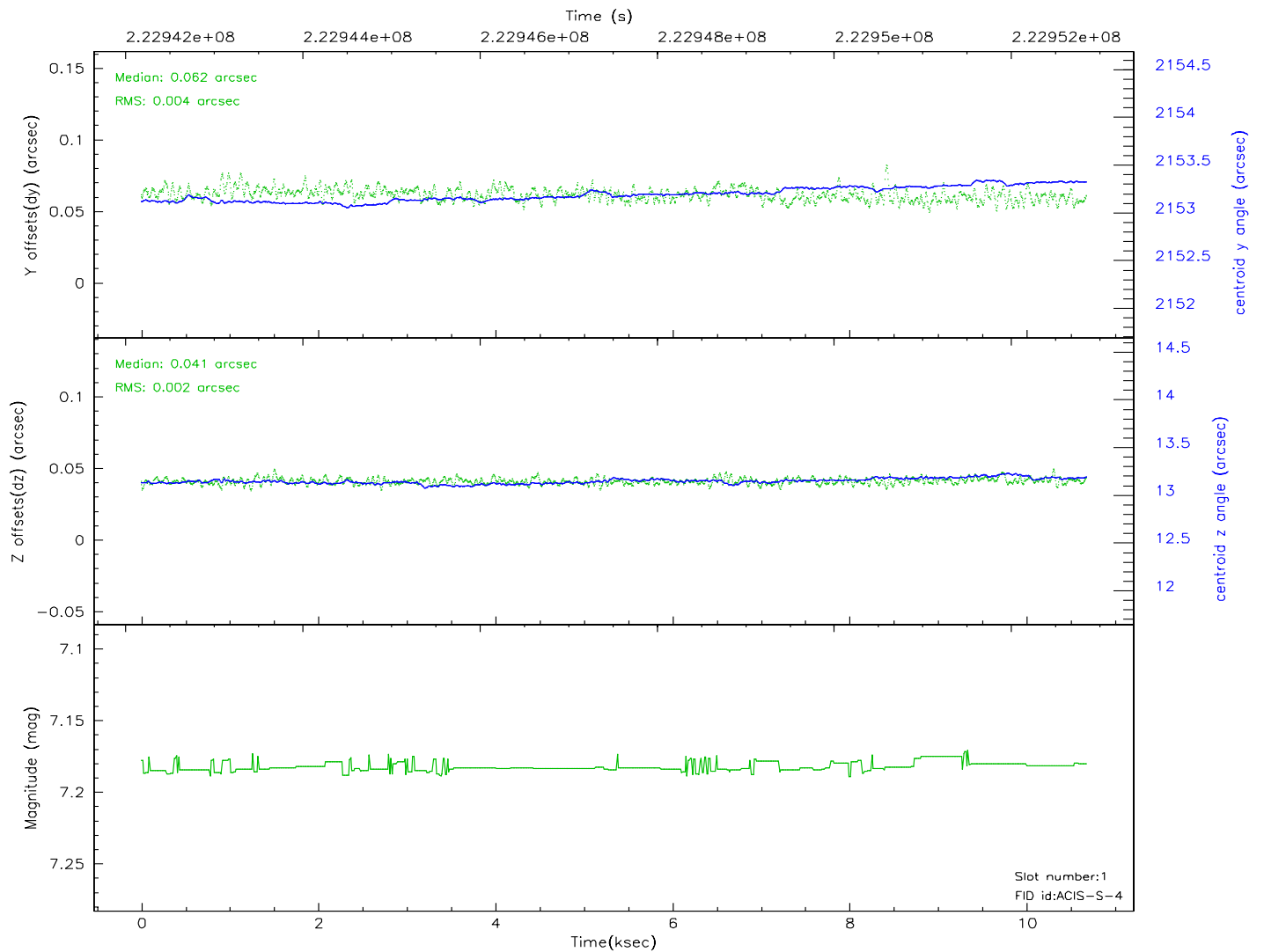
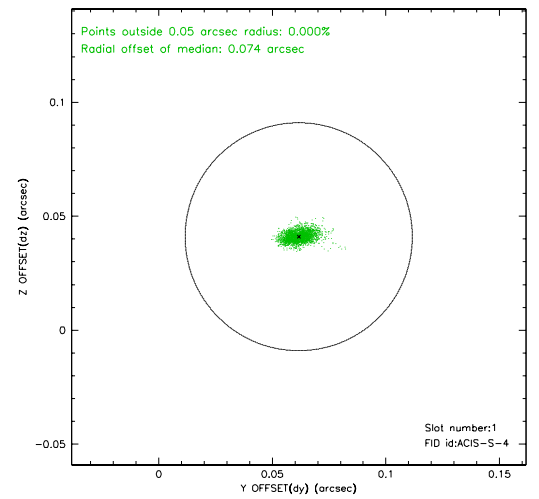
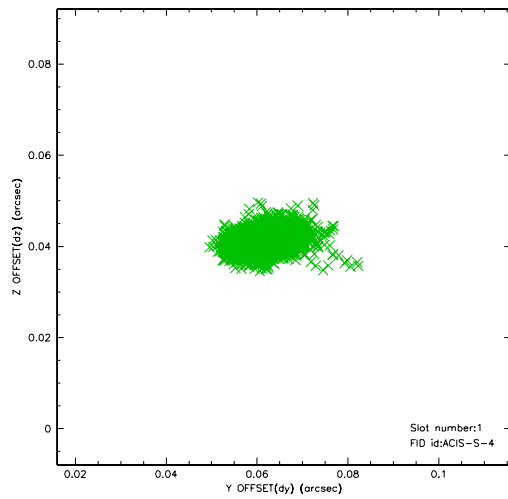


2.5 FID Slots

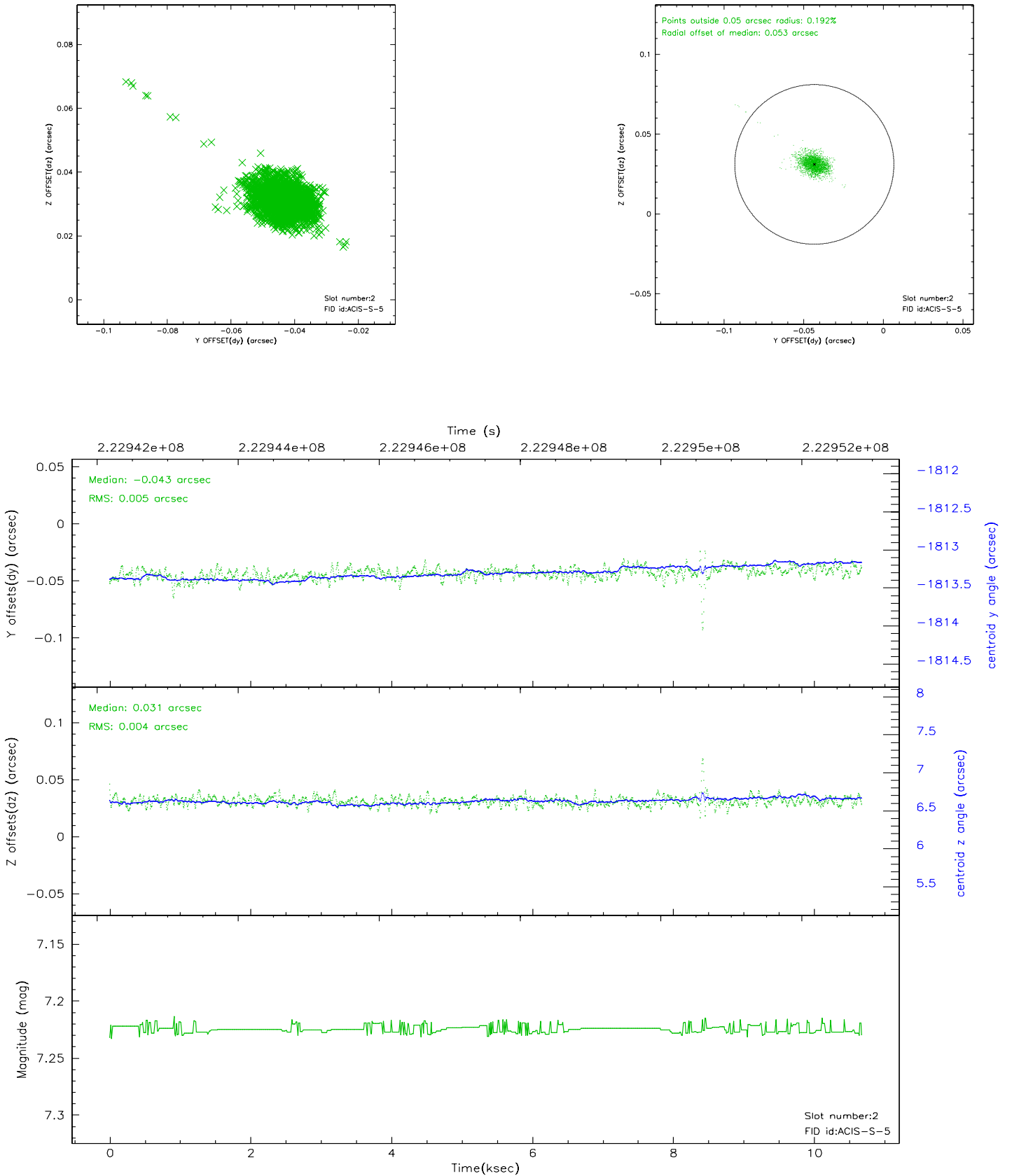
2.5.1 Slot 0



2.5.2 Slot 1



2.5.3 Slot 2

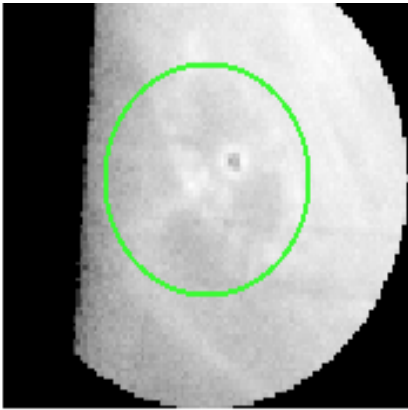


3 Gratings

3.1 HEG Arm



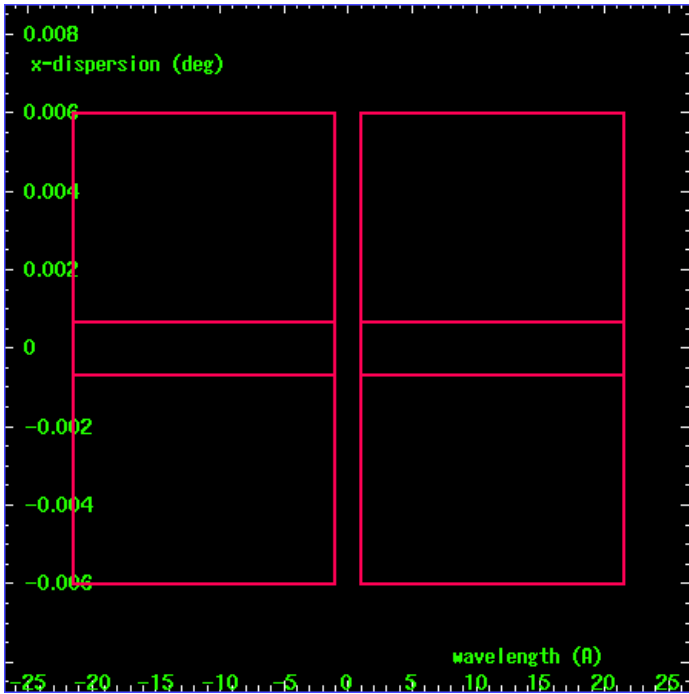
HEG Order Sort 123



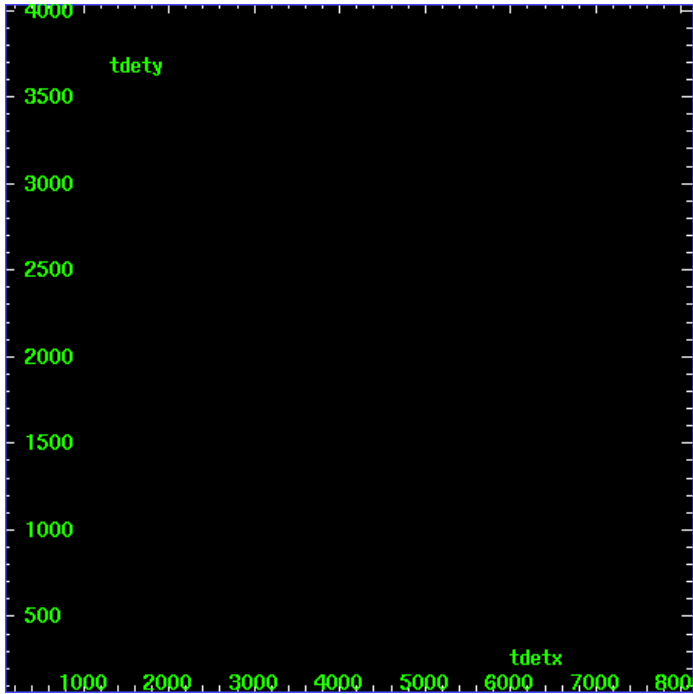
HEG Zero Order



HEG Order Sort ALL

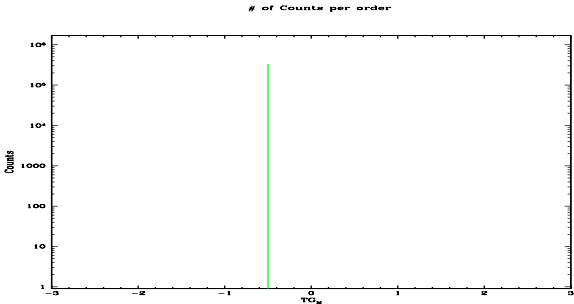


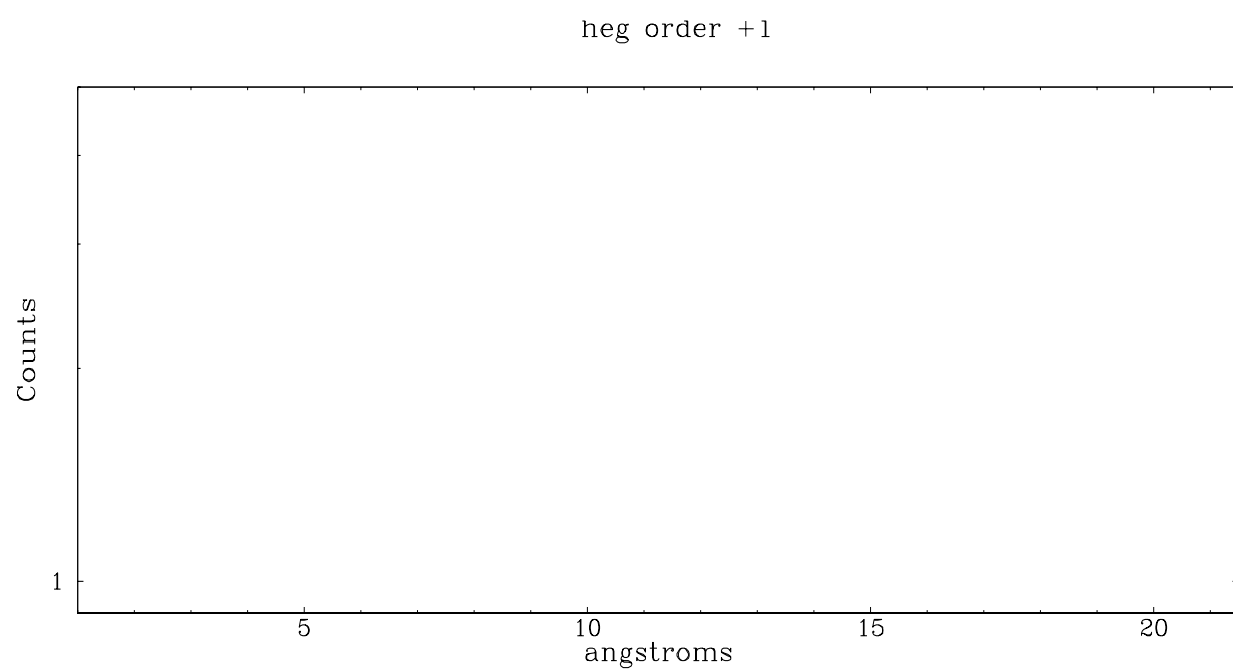
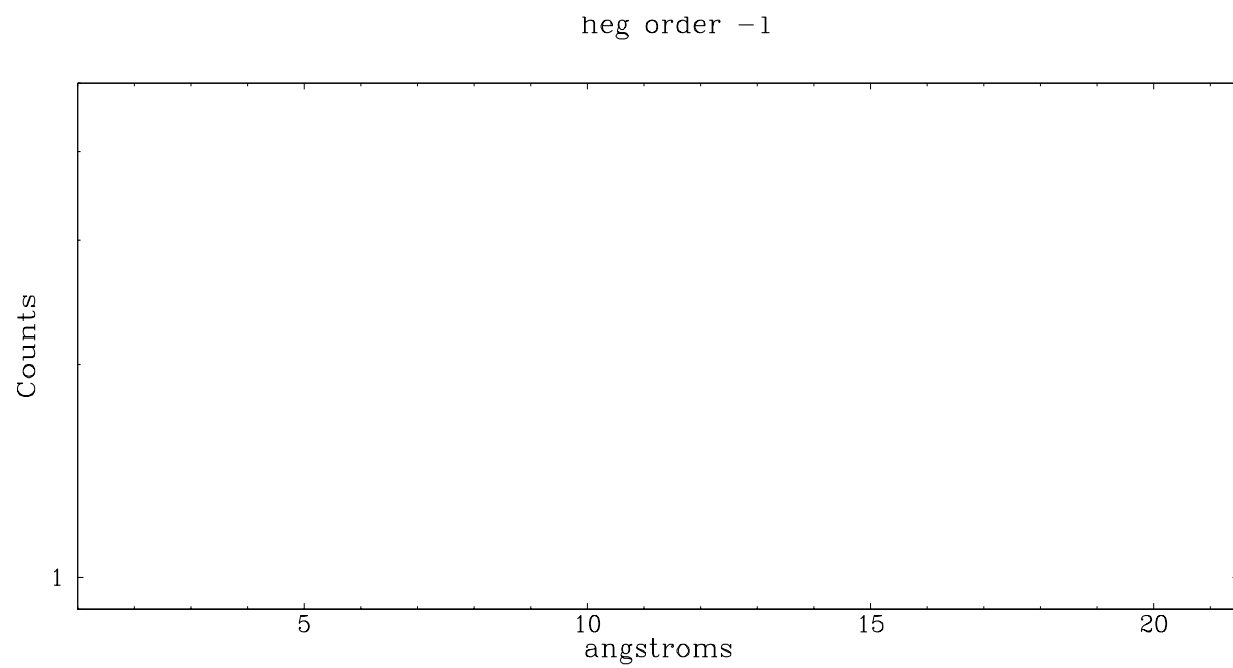
Spot Image HEG



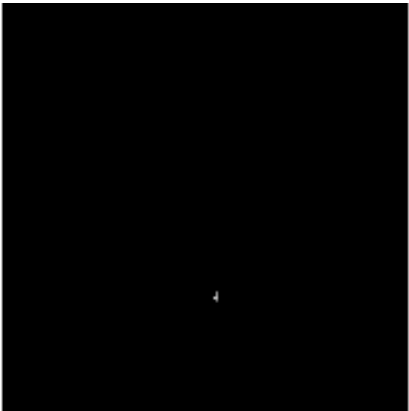
Full Detector HEG

	order -3	order -2	order -1	order 0	order 1	order 2	order 3
Events	0	0	0	336825	0	0	0

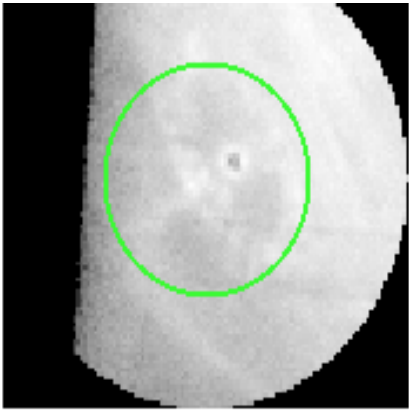




3.2 MEG Arm



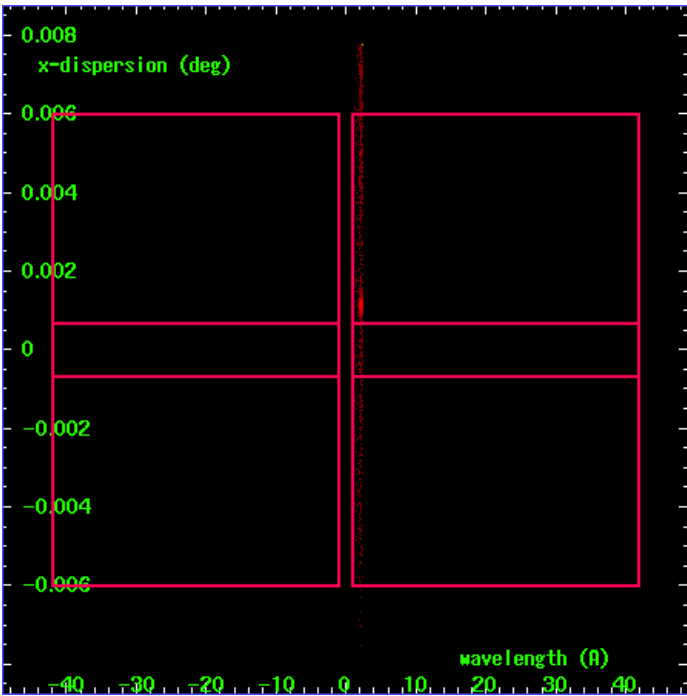
MEG Order Sort 123



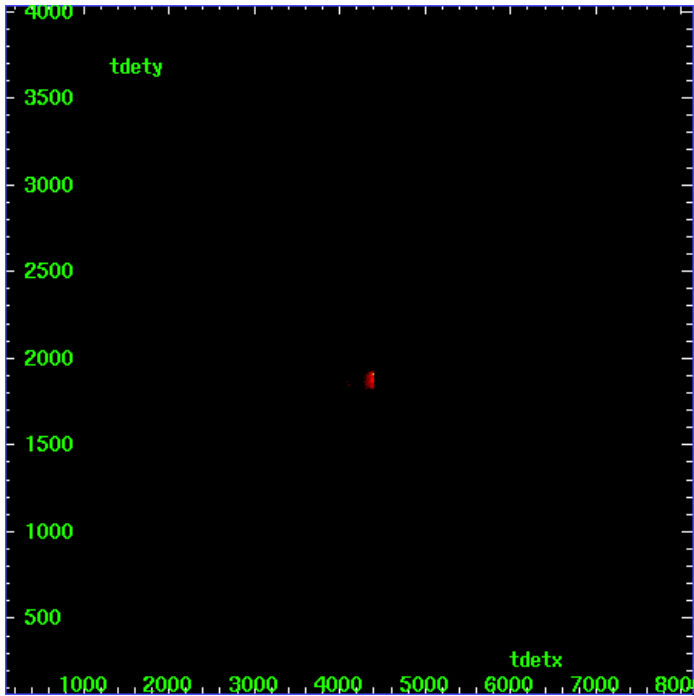
MEG Zero Order



MEG Order Sort ALL

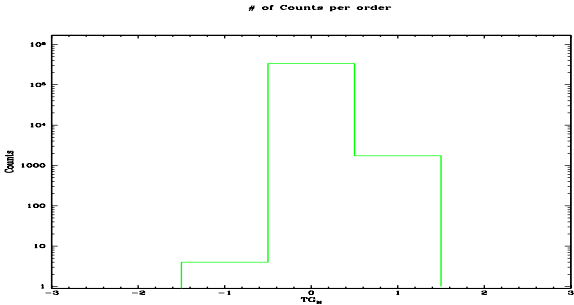


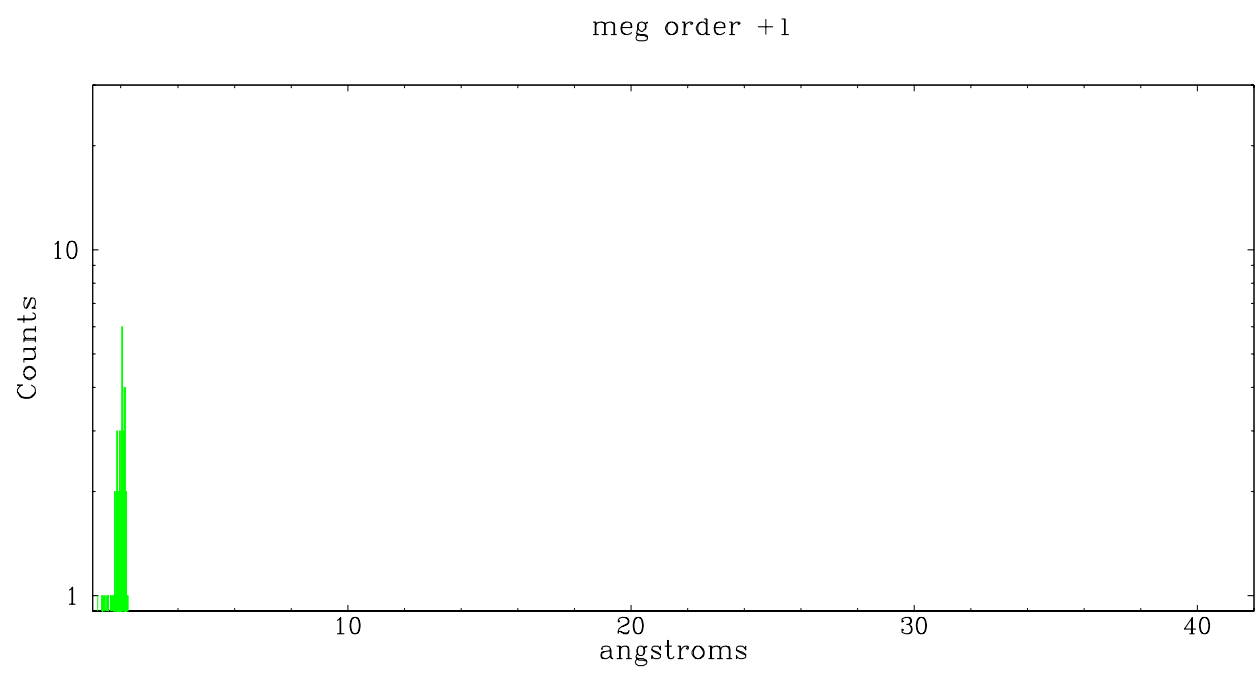
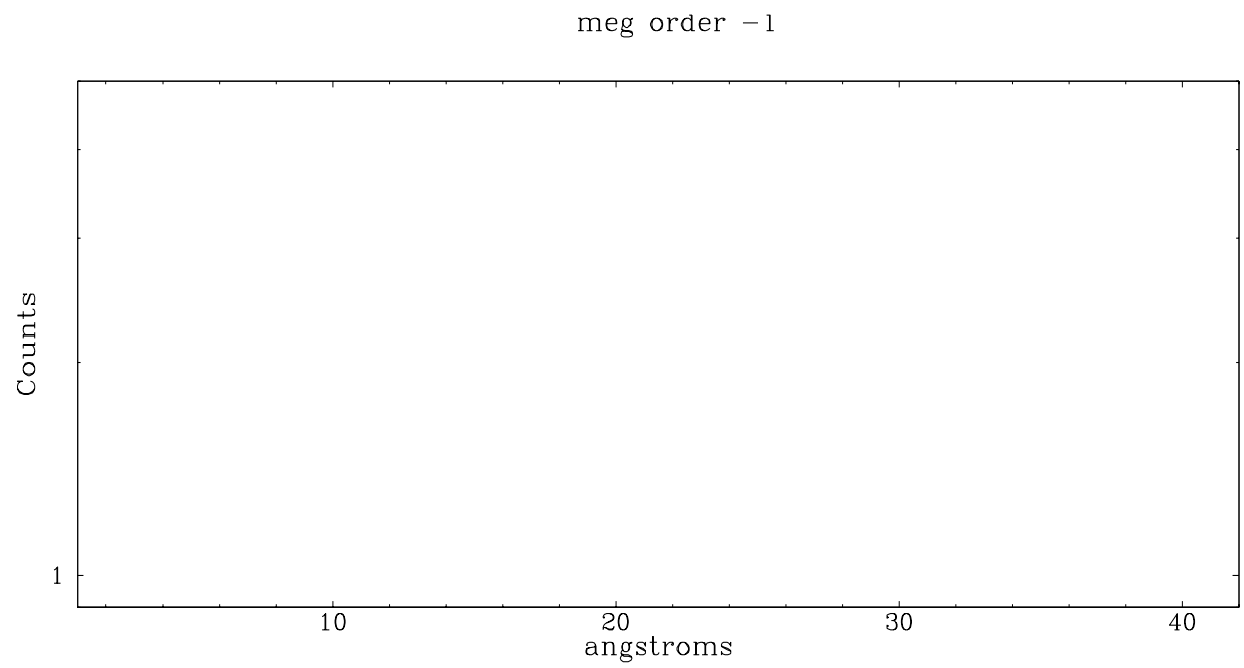
Spot Image MEG



Full Detector MEG

	order -3	order -2	order -1	order 0	order 1	order 2	order 3
Events	0	0	4	336825	1739	1	0





A Summary

A.1 Status

V&V Scientist	Beth Sundheim
V&V Date (YYYY-MM-DD)	2006.02.21
V&V Edition	1
V&V Disposition and Status	OK
V&V Charge Time	10.6815

A.2 Comments

Window constraint not satisfied.