

V&V Reference Report

L2 ASCDS Version : 7.6.7.1

Observation 5548 - L2 Version 002
Chandra X-Ray Center

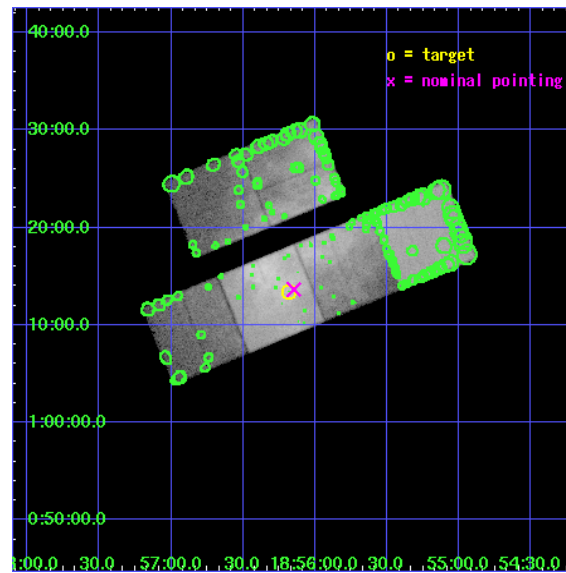
L2 Processing Date : Mar 11 2006

Contents

1	Front	2
2	OBI	3
2.1	OBI	3
2.1.1	Images	3
2.1.2	Bias	3
2.1.3	Parameters	4
2.1.4	Events	4
2.2	Compared Parameters	5
2.3	Aspect	6
2.4	Star Slots	9
2.4.1	Slot 3	9
2.4.2	Slot 4	10
2.4.3	Slot 5	11
2.4.4	Slot 6	12
2.4.5	Slot 7	13
2.5	FID Slots	14
2.5.1	Slot 0	14
2.5.2	Slot 1	15
2.5.3	Slot 2	16
3	Point Sources	17
A	Summary	18
A.1	Status	18
A.2	Comments	18

1 Front

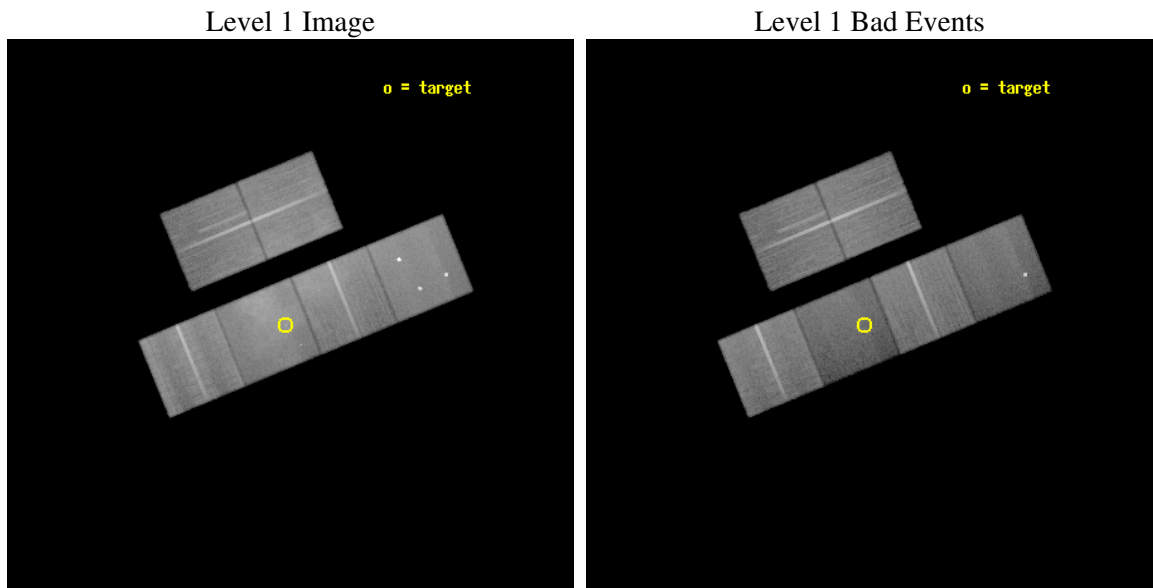
seq_num	500537
obs_id	5548
title	The Structure and Spectrum of W44 s Pulsar Wind Nebula
observer	Dr. Robert Petre
object	W44 PWN
dtcycle	0
cycle	P
ra_targ	284.045
dec_targ	1.2225
ra_nom	284.0368560622
dec_nom	1.2276779207914
roll_nom	157.65680206268
revision	2
ontime	52979.199802637
livetime	52308.345274492
ontime2	52972.717832059
ontime3	52966.235871494
ontime5	52979.199802637
ontime6	52975.95882234
ontime7	52979.199802637
ontime8	52972.717931569
l2events	786799



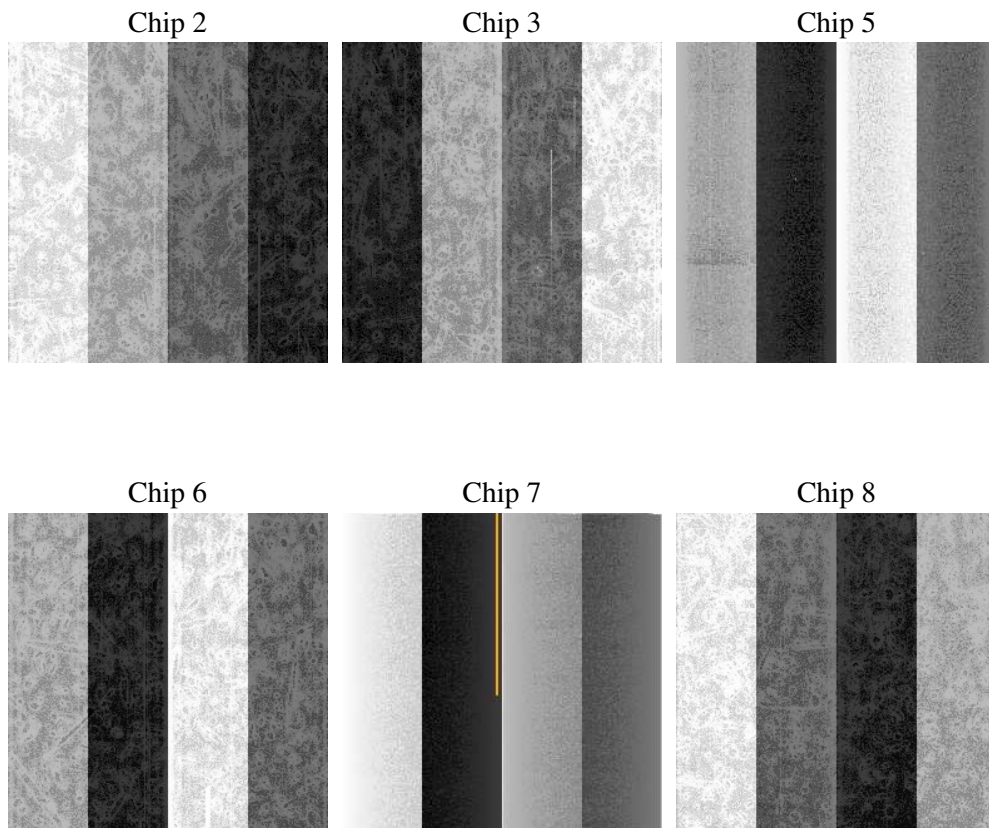
2 OBI

2.1 OBI

2.1.1 Images



2.1.2 Bias



2.1.3 Parameters

obi_num	0
ascdsver	7.6.7.1
caldsver	3.2.1
date	2006-03-11T20:21:57
revision	2

sched_exp_time	53000.000000
ontime	52984.034841329
ontime2	52977.552850842
ontime3	52971.070890278
ontime5	52984.034841329
ontime6	52980.793861032
ontime7	52984.034841329
ontime8	52977.55297026
l1events	2447629

2.1.4 Events

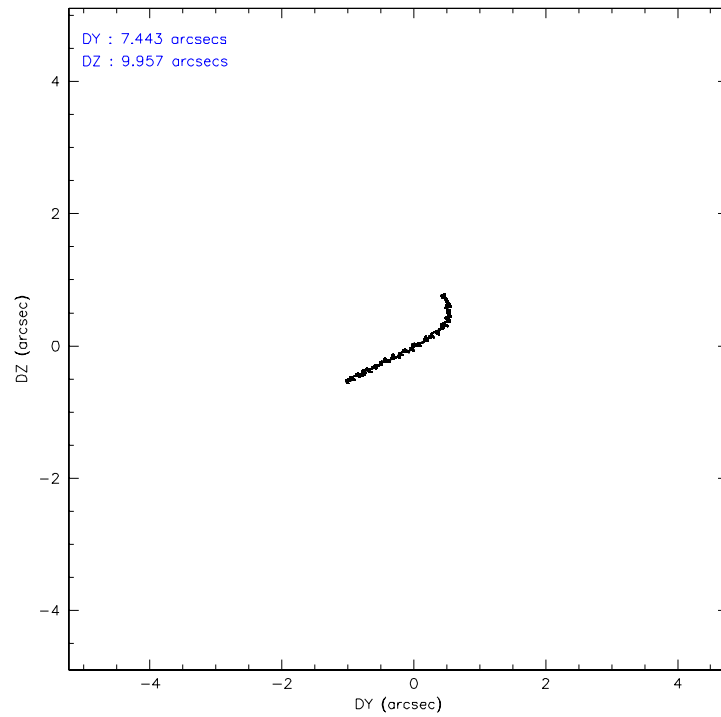
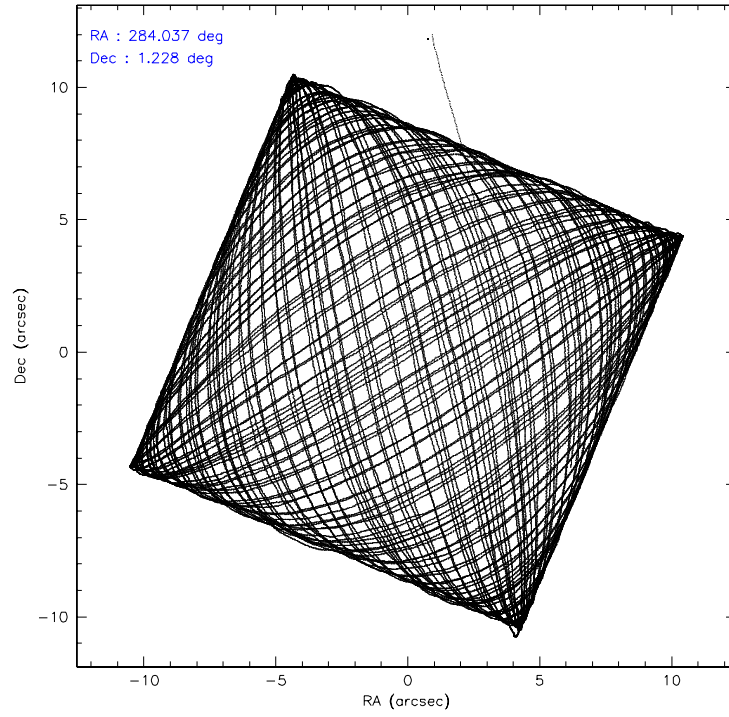
	ccd 2	ccd 3	ccd 5	ccd 6	ccd 7	ccd 8
level 1 events	443736	332438	407814	431442	437733	394466
rejected events	310222	283468	198568	289376	171366	297177
rejected %	69%	85%	48%	67%	39%	75%

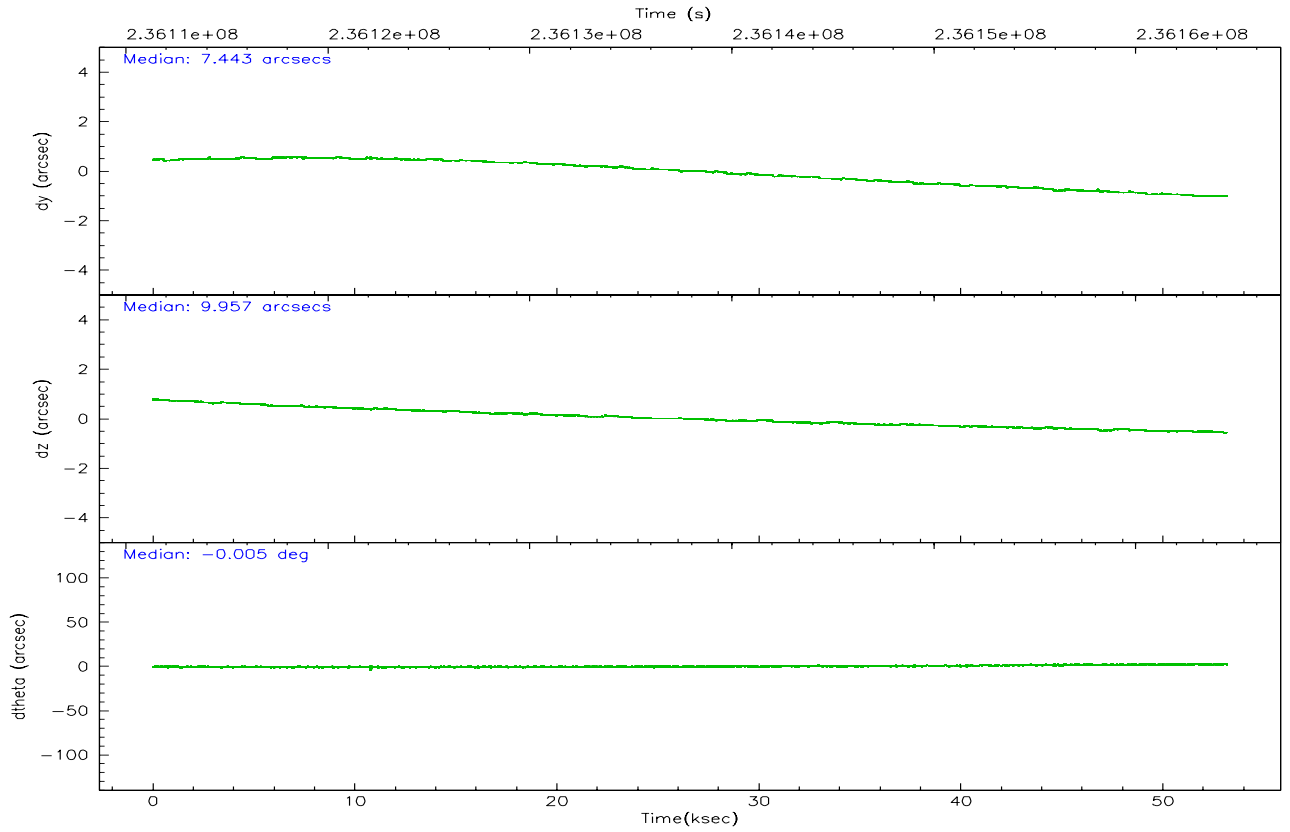
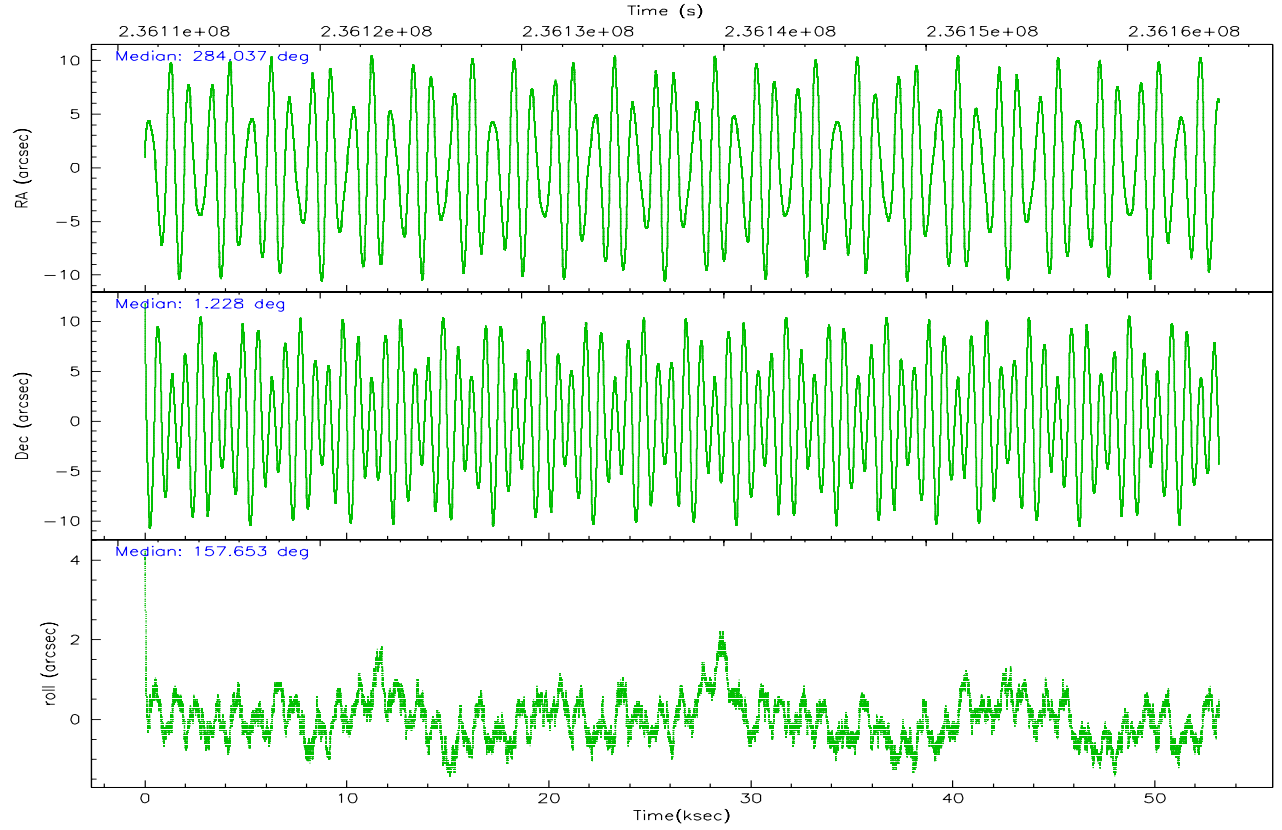
	ccd 2	ccd 3	ccd 5	ccd 6	ccd 7	ccd 8
grade 0 events	96179	27139	25800	103168	40641	29387
	21%	8%	6%	23%	9%	7%
grade 1 events	571	261	129	560	201	277
	0%	0%	0%	0%	0%	0%
grade 2 events	17319	8191	63828	17615	73306	22545
	3%	2%	15%	4%	16%	5%
grade 3 events	6466	3900	3912	6567	21171	10389
	1%	1%	0%	1%	4%	2%
grade 4 events	6503	3977	3763	6539	21015	9734
	1%	1%	0%	1%	4%	2%
grade 5 events	9478	10755	22500	11402	25334	16598
	2%	3%	5%	2%	5%	4%
grade 6 events	7055	5769	111956	8183	110251	25238
	1%	1%	27%	1%	25%	6%
grade 7 events	300165	272446	175926	277408	145814	280298
	67%	81%	43%	64%	33%	71%

2.2 Compared Parameters

Parameter	Planned	Actual	Parameter	Planned	Actual
Instrument	ACIS	ACIS	Obspar format version number	6	6
Detector	ACIS-235678	ACIS-235678	Obspar file type	PREDICTED	ACTUAL
Grating	NONE	NONE	Obspar update status	NONE	UPDATED
Data mode	VFAINT	VFAINT	On-chip summing requested	N	N
Observation mode	POINTING	POINTING	Subarray requested	NONE	NONE
Pointing RA	284.063776	284.0368560622039	Alternating exposures requested	N	N
Pointing Dec	1.231681	1.227677920791443	Primary exposure time	0.000000	3.2
Pointing Roll	157.499600	157.6568020626832			
SIM focus pos (mm)	-0.684267	-0.6828225247311905			
SIM defocus (mm)	0	0.001444936568705701			
SIM translation stage pos (mm)	-190.132523	-190.1400660498719			
SIM translation stage offset (mm)	0	0.00754346686406393			
Observation start time	236111531.184000	236110505.32627			
Observation start date	2005-06-25T18:31:07	2005-06-25T18:15:05			
Observation end time	236164531.184000	236165899.9163			
Observation end date	2005-06-26T09:14:27	2005-06-26T09:38:19			
Read mode	TIMED	TIMED			

2.3 Aspect



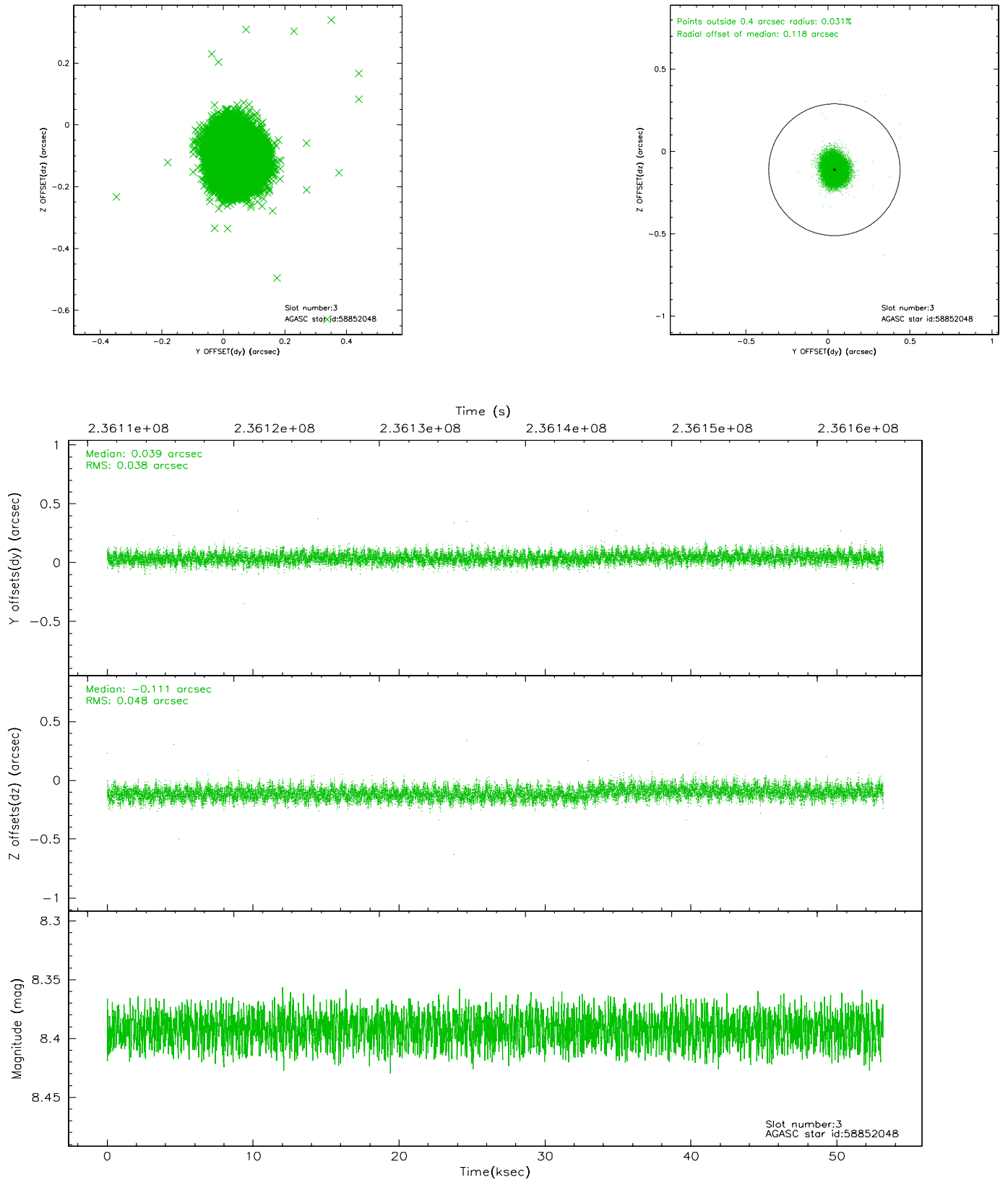


Slot Statistics

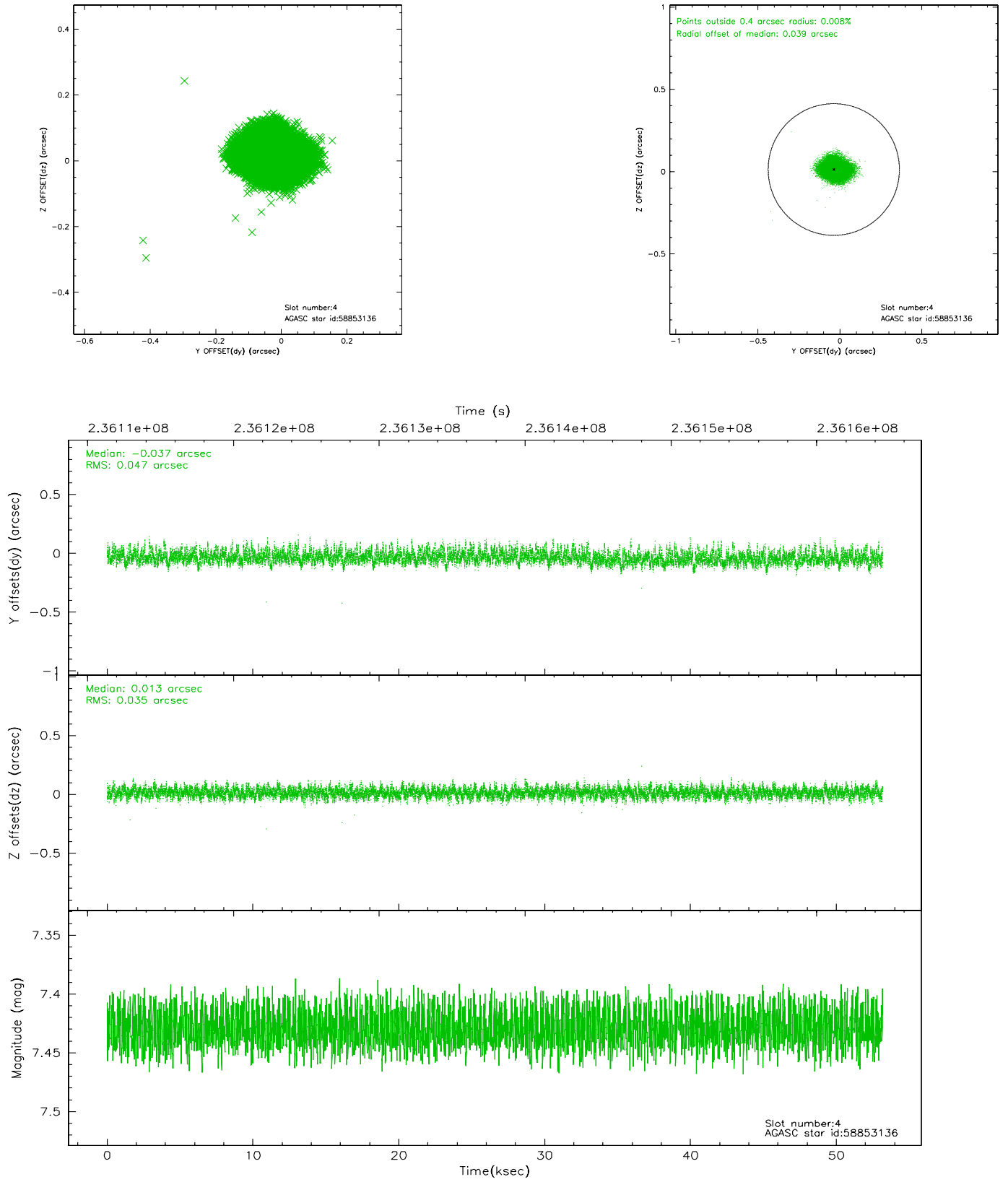
slot	status	id	mag	n_pts	med_dy	med_dz	dr1	dr2	ra	dec	mean_y	mean_z
0	FID	ACIS-S-2	7.10	12972	-0.039	-0.002	0.020	0.029	0.000000	0.000000	-760.13	-1731.25
1	FID	ACIS-S-4	7.21	12972	0.066	0.019	0.013	0.019	0.000000	0.000000	2153.22	177.34
2	FID	ACIS-S-5	7.23	12971	-0.055	-0.007	0.013	0.018	0.000000	0.000000	-1813.06	170.88
3	GUIDE	58852048	8.39	25936	0.039	-0.111	0.065	0.104	283.366398	0.870285	1821.65	2162.66
4	GUIDE	58853136	7.43	25940	-0.037	0.013	0.062	0.101	284.607098	1.198128	-1852.48	-636.77
5	GUIDE	58853800	7.96	25941	0.041	-0.027	0.060	0.096	284.849220	1.406285	-2370.57	-1662.96
6	GUIDE	59377960	7.68	25937	0.040	0.029	0.075	0.132	283.627467	1.897490	2367.92	-1613.25
7	GUIDE	59376240	7.29	25942	-0.084	0.094	0.071	0.113	283.651753	1.887471	2273.61	-1613.58

2.4 Star Slots

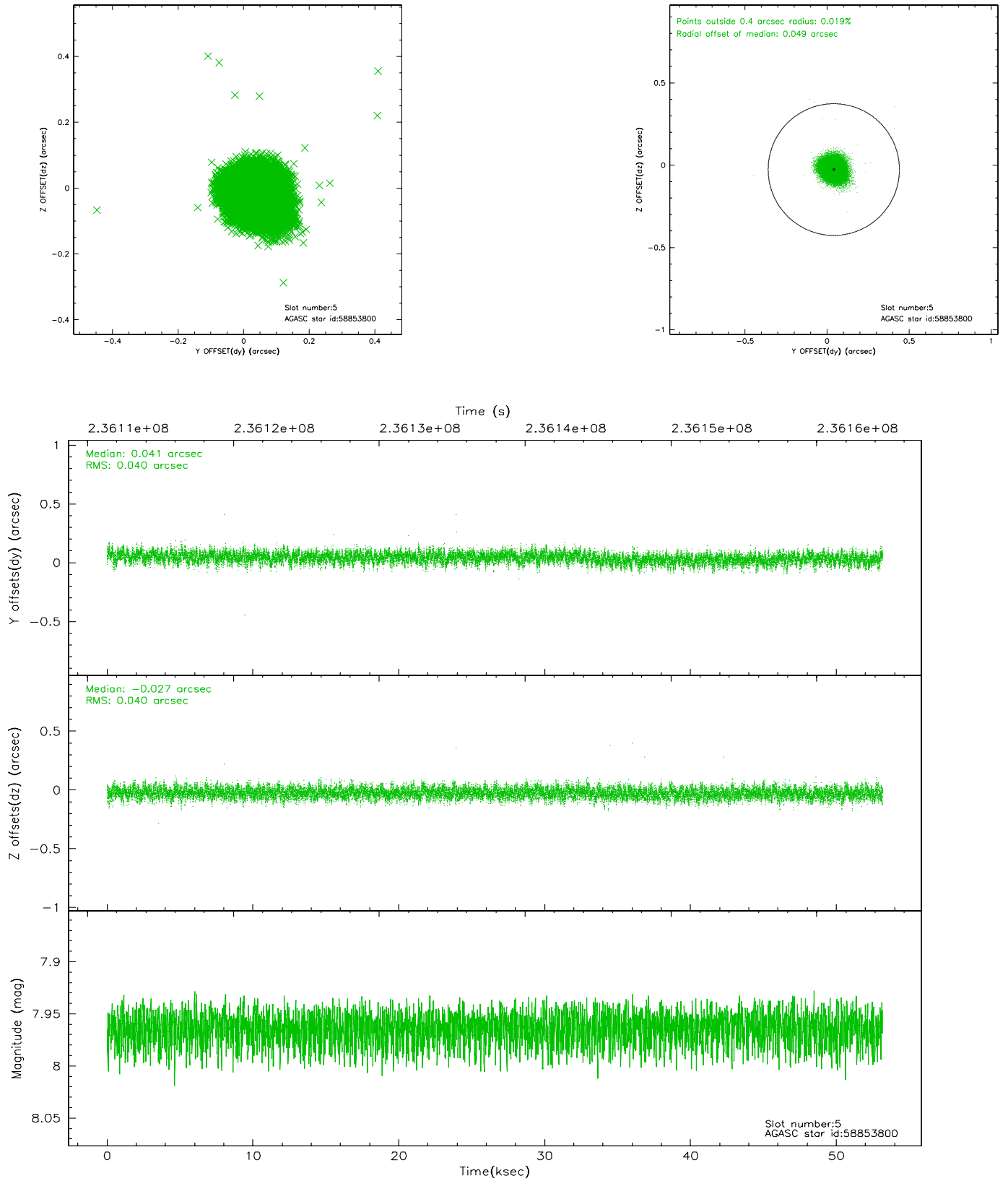
2.4.1 Slot 3



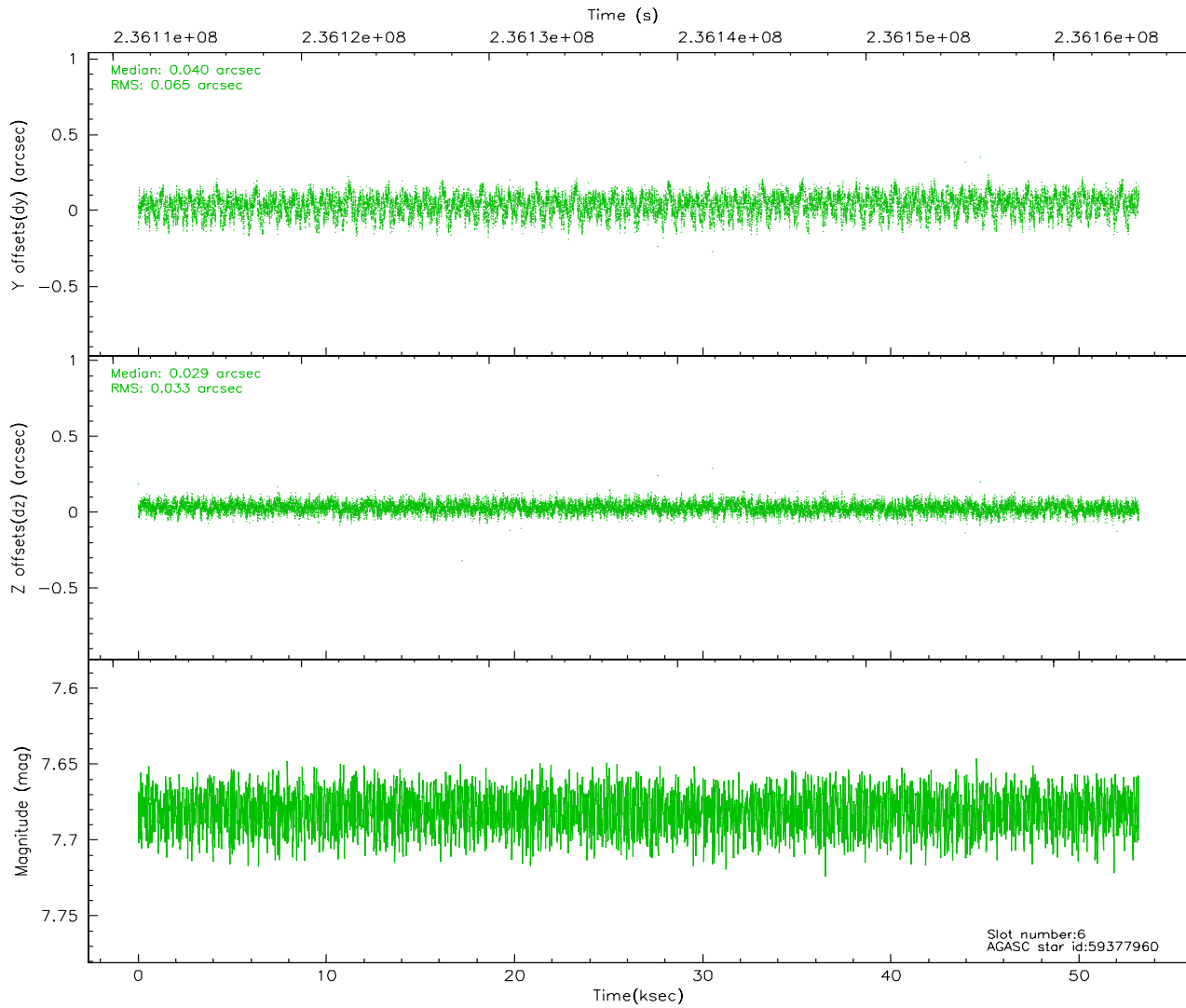
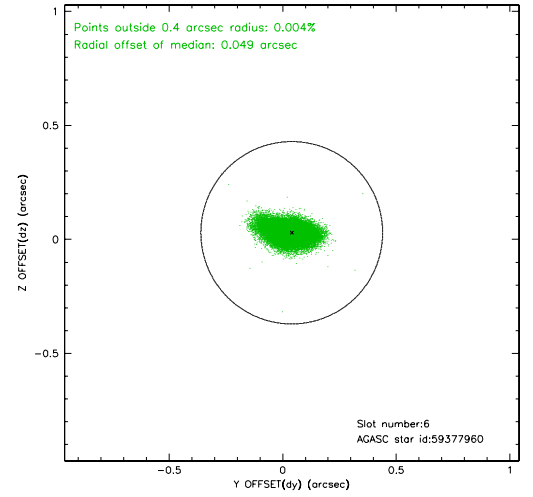
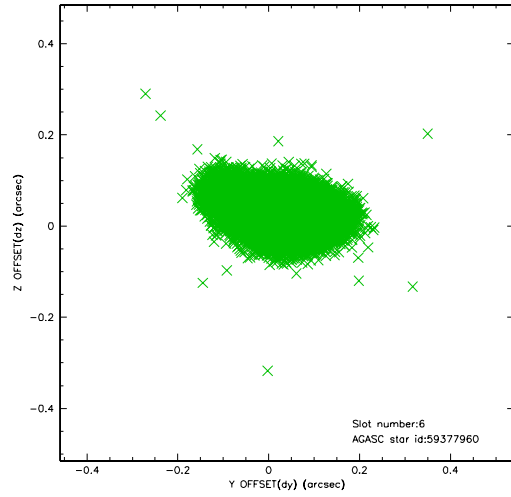
2.4.2 Slot 4



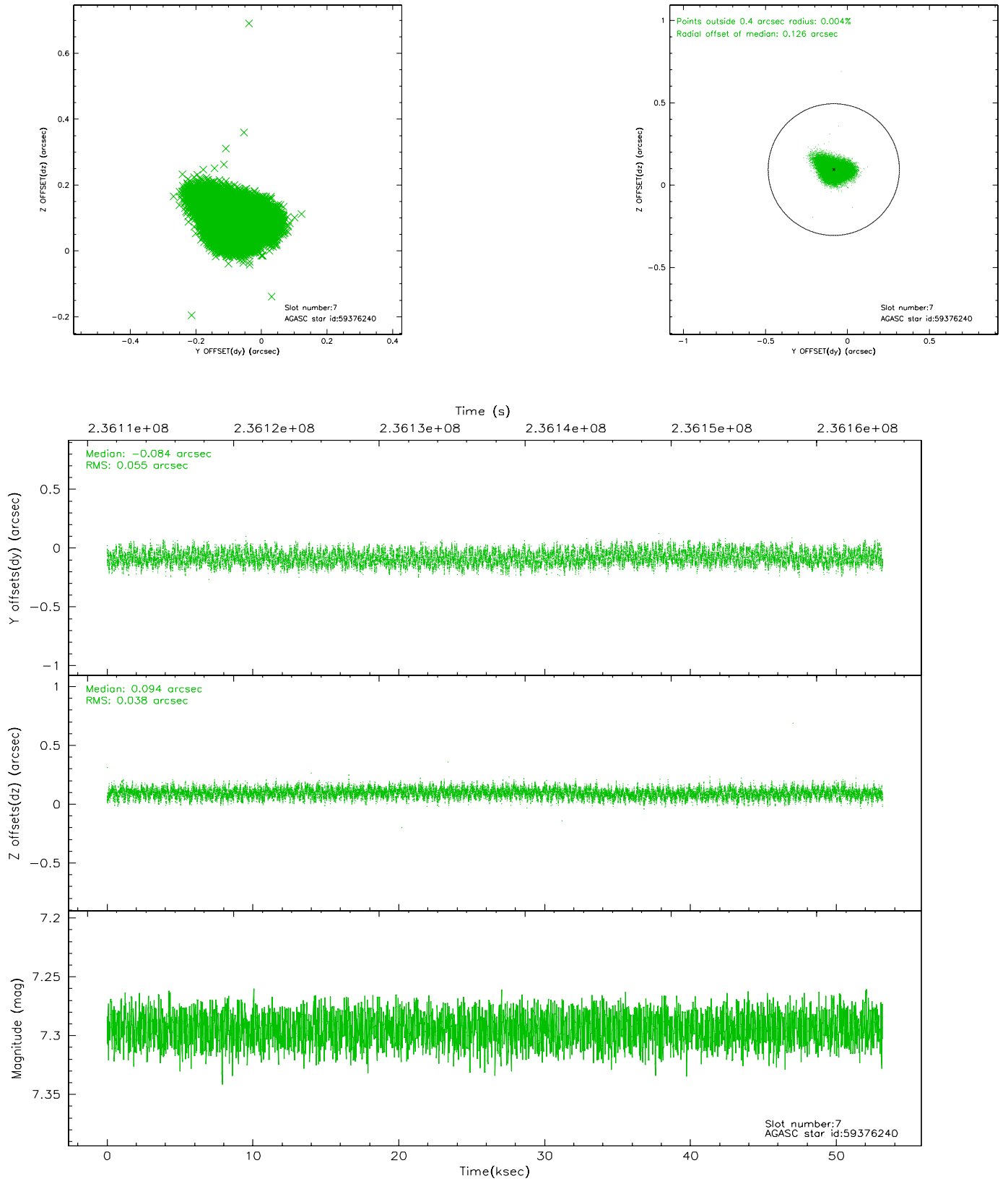
2.4.3 Slot 5



2.4.4 Slot 6

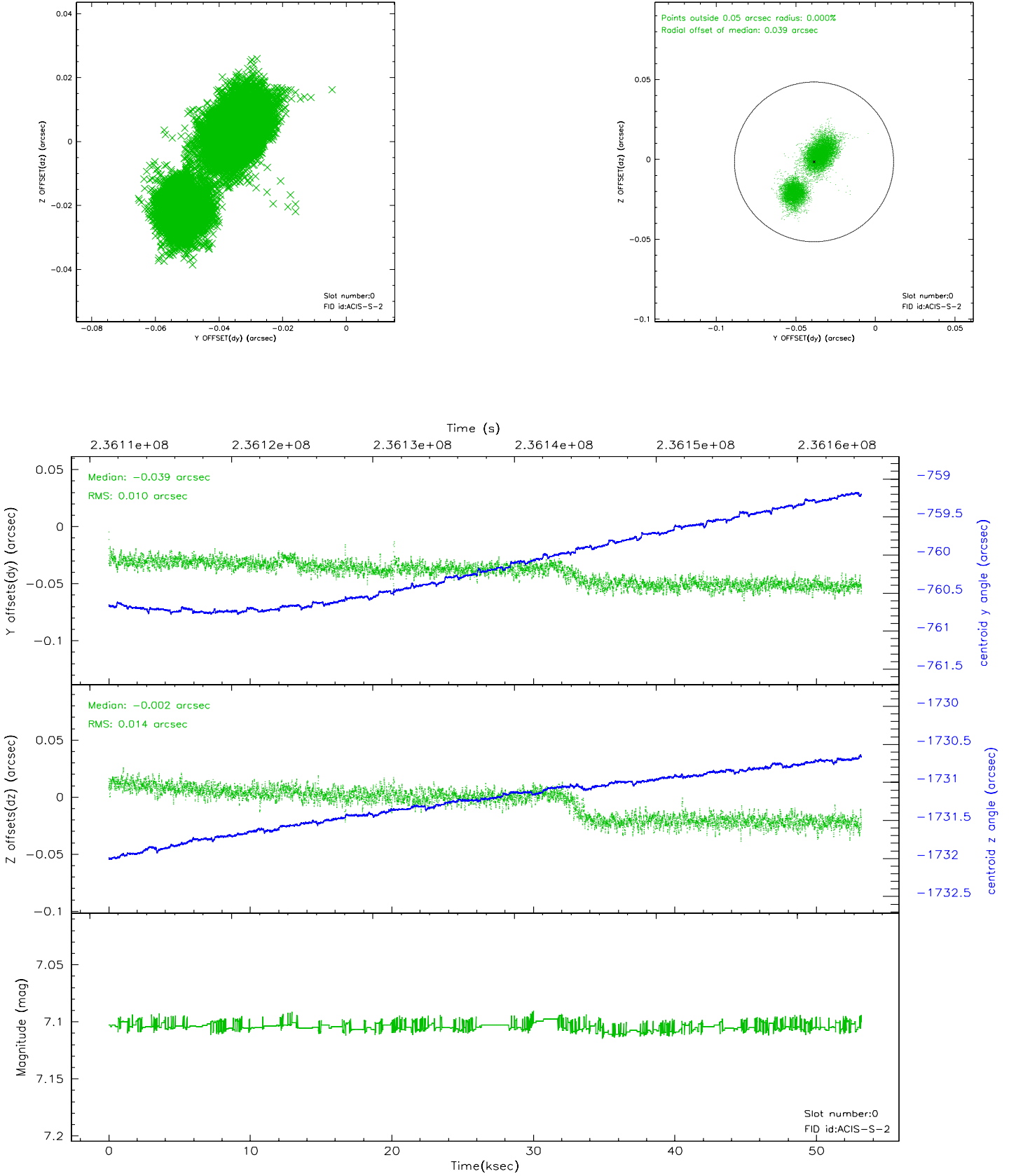


2.4.5 Slot 7

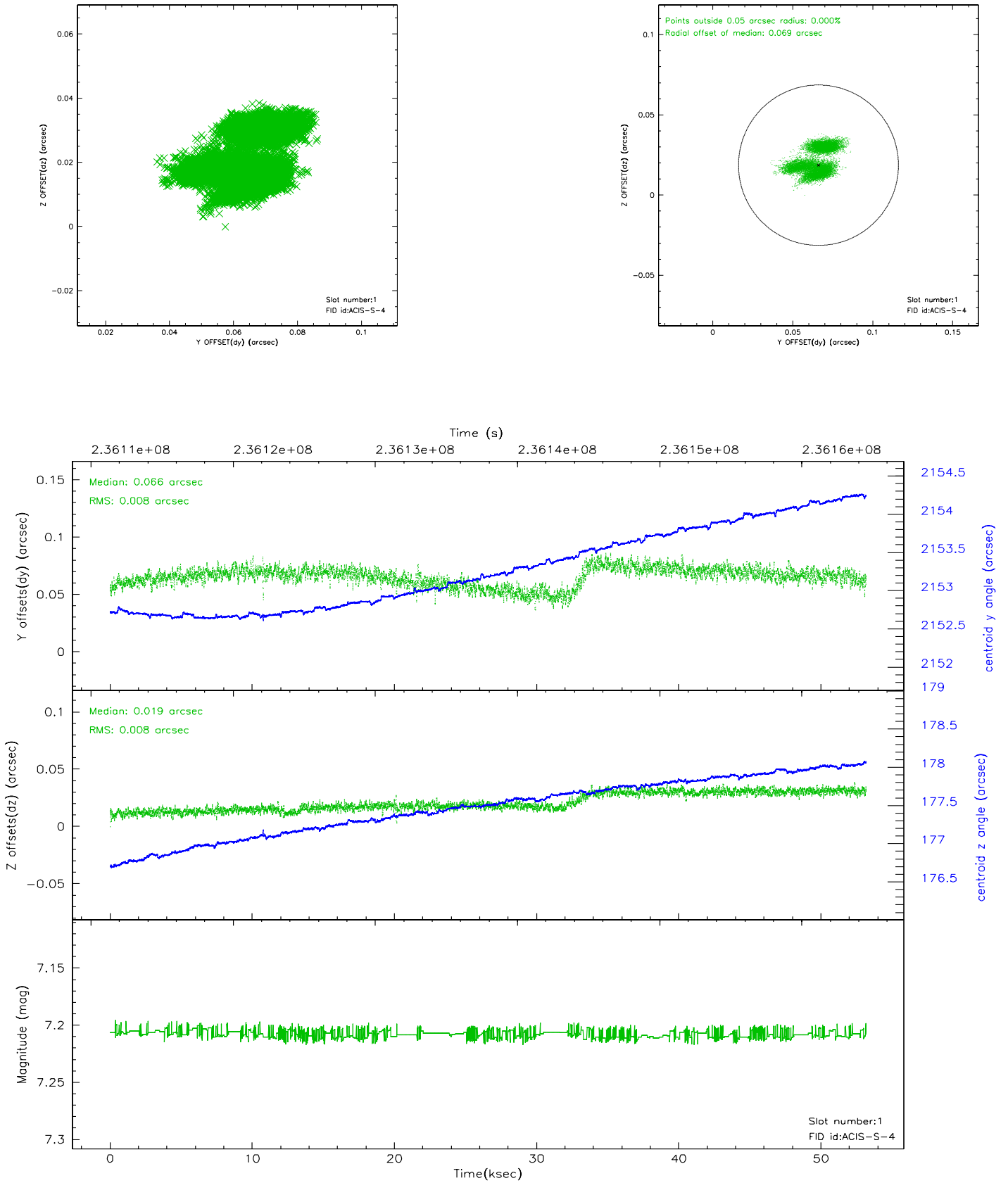


2.5 FID Slots

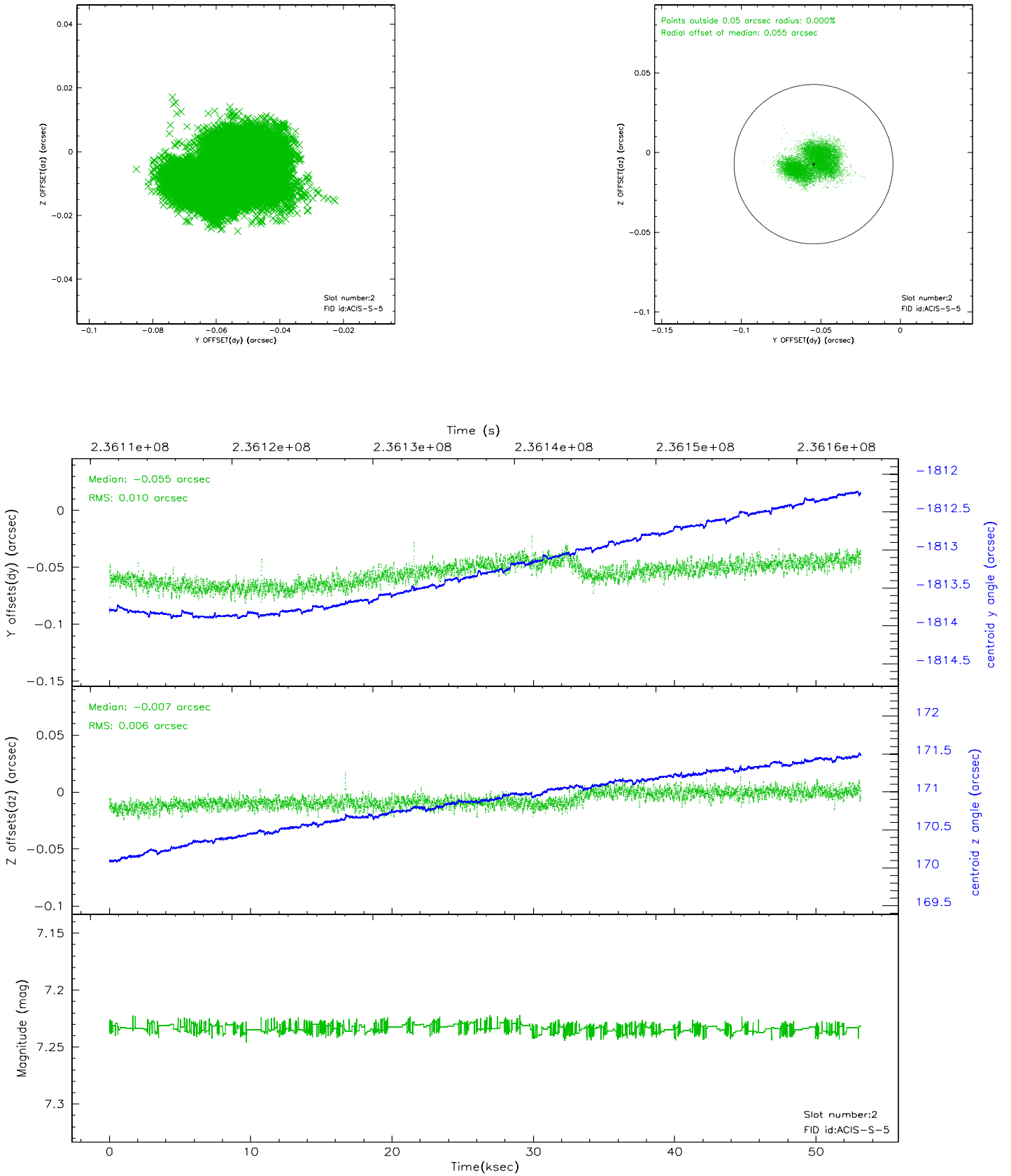
2.5.1 Slot 0



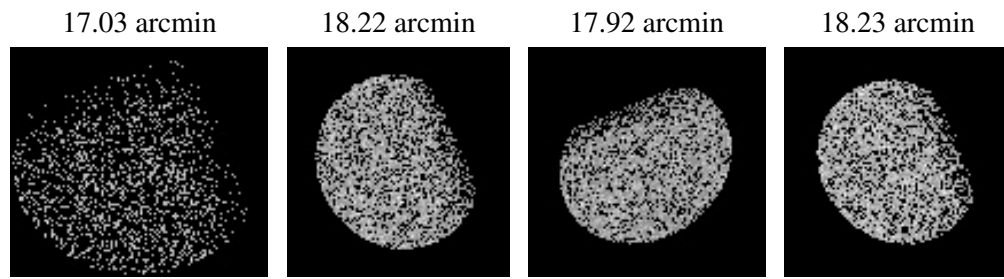
2.5.2 Slot 1



2.5.3 Slot 2



3 Point Sources



A Summary

A.1 Status

V&V Scientist	Beth Sundheim
V&V Date (YYYY-MM-DD)	2006.03.13
V&V Edition	1
V&V Disposition and Status	OK
V&V Charge Time	52.97919

A.2 Comments