

V&V Reference Report

L2 ASCDS Version : 8.5.1.1

Observation 5541 - L2 Version 3
Chandra X-Ray Center

L2 Processing Date : Dec 31 2012

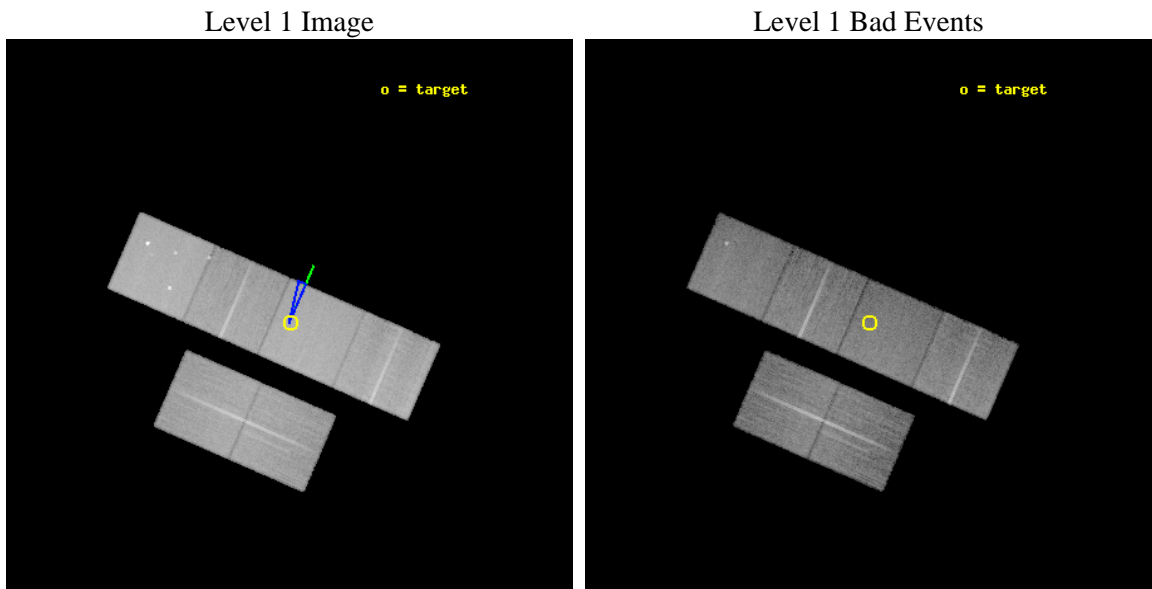
Contents

1	Front	2
2	OBI	3
2.1	OBI	3
2.1.1	Images	3
2.1.2	Bias	3
2.1.3	Parameters	4
2.1.4	Events	4
2.2	Compared Parameters	5
2.3	Aspect	6
2.4	Star Slots	9
2.4.1	Slot 3	9
2.4.2	Slot 4	10
2.4.3	Slot 5	11
2.4.4	Slot 6	12
2.4.5	Slot 7	13
2.5	FID Slots	14
2.5.1	Slot 0	14
2.5.2	Slot 1	15
2.5.3	Slot 2	16
A	Summary	17
A.1	Status	17
A.2	Comments	17

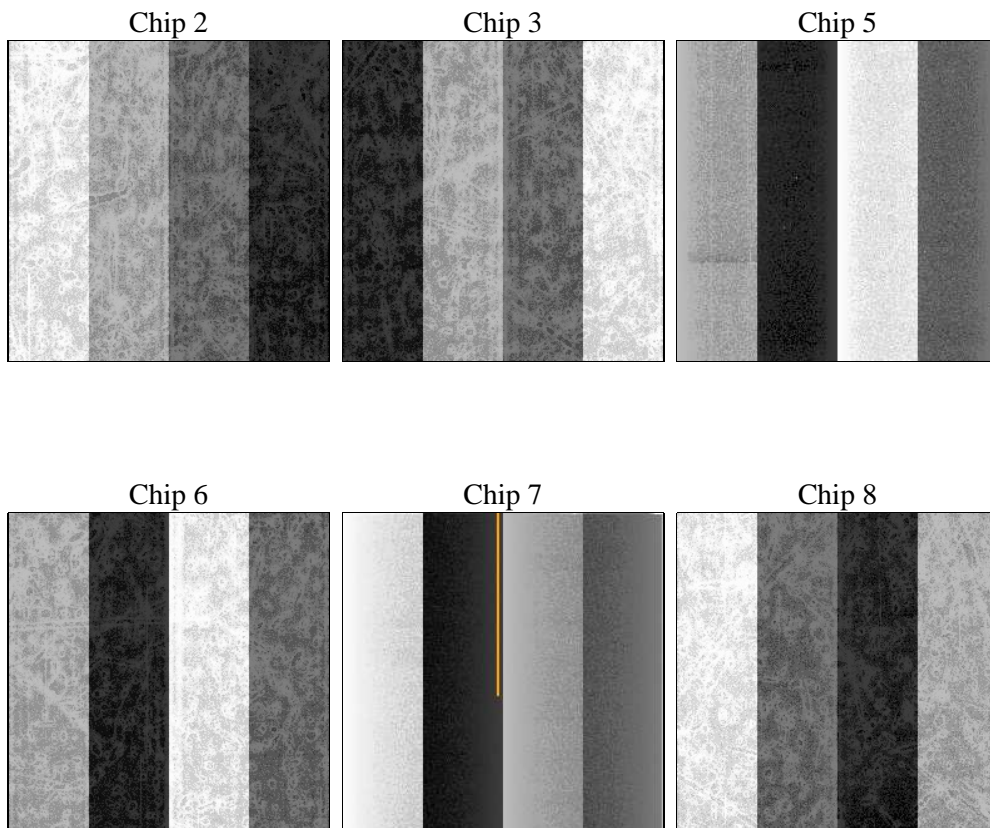
2 OBI

2.1 OBI

2.1.1 Images



2.1.2 Bias



2.1.3 Parameters

obi_num	0	Obi number	sched_exp_time	20000.000000	[s] Scheduled observation exposure time
ascdsver	8.5.1.1	Processing system revision	ontime	19956.968528301	Sum of GTIs [s]
caldsver	4.5.5	 	ontime2	19957.009568304	Sum of GTIs [s]
date	2012-12-31T10:54:46	Date and time of file creation	ontime3	19953.604427963	Sum of GTIs [s]
revision	3	Processing version of data	ontime5	19956.927488297	Sum of GTIs [s]
			ontime6	19956.886448294	Sum of GTIs [s]
			ontime7	19956.968528301	Sum of GTIs [s]
			ontime8	19953.563378006	Sum of GTIs [s]
			l1events	1247451	Number of level 1 events

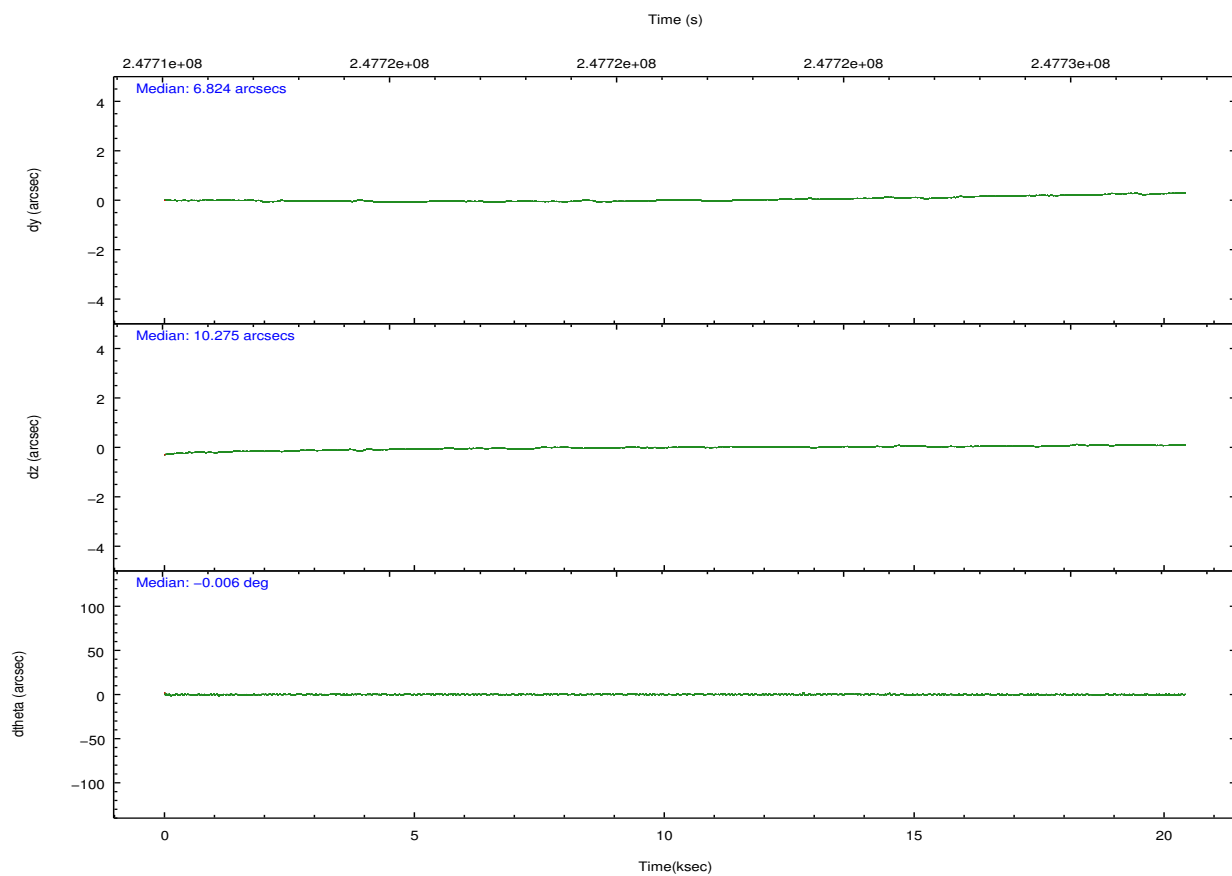
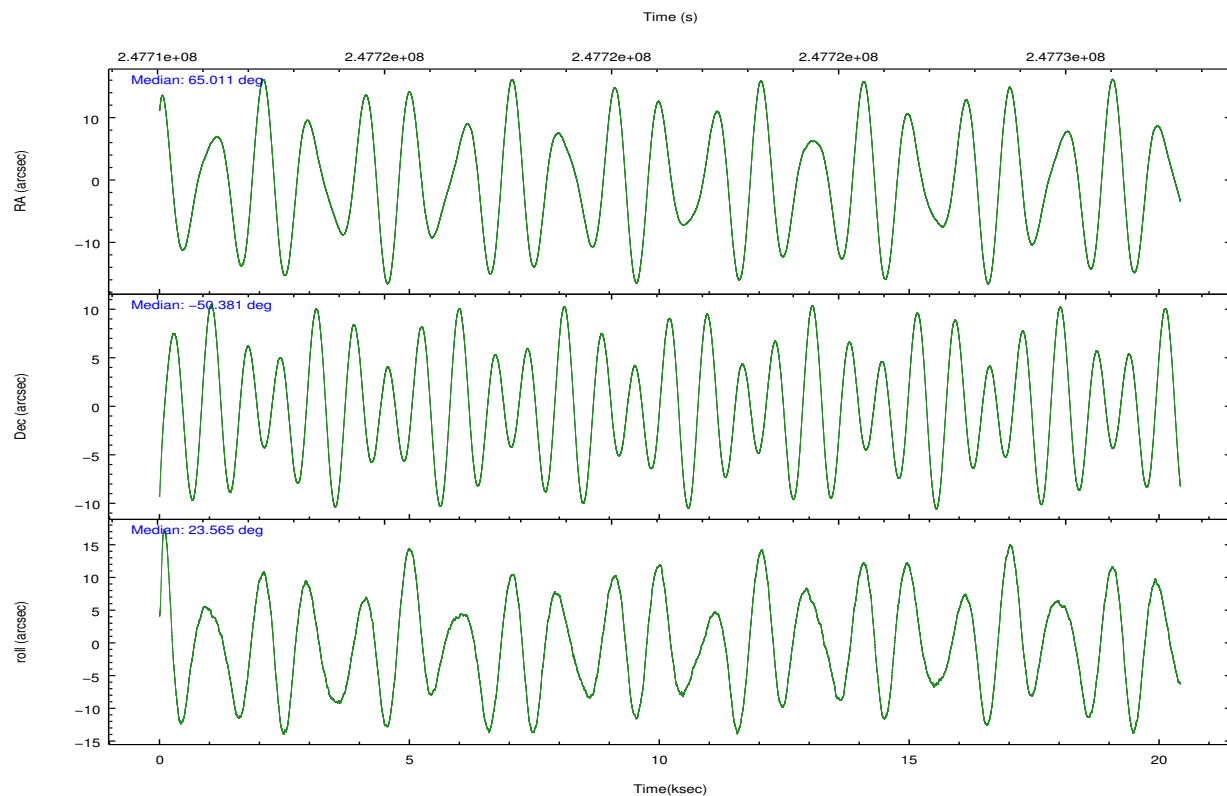
2.1.4 Events

	ccd 2	ccd 3	ccd 5	ccd 6	ccd 7	ccd 8		ccd 2	ccd 3	ccd 5	ccd 6	ccd 7	ccd 8
level 1 events	183753	170443	260534	177820	234032	220869	grade 0 events	24975	24283	16086	22123	10317	30592
rejected events	143540	130502	131664	138412	126497	154298		13%	14%	6%	12%	4%	13%
rejected %	78%	76%	50%	77%	54%	69%	grade 1 events	185	203	1184	135	260	251
								0%	0%	0%	0%	0%	0%
							grade 2 events	6094	5875	38552	6808	20564	12200
								3%	3%	14%	3%	8%	5%
							grade 3 events	2543	2668	4836	2543	8803	5675
								1%	1%	1%	1%	3%	2%
							grade 4 events	2467	2659	4701	2529	8622	5257
								1%	1%	1%	1%	3%	2%
							grade 5 events	6223	6933	17478	7560	20546	9612
								3%	4%	6%	4%	8%	4%
							grade 6 events	4136	4461	64718	5409	59239	12872
								2%	2%	24%	3%	25%	5%
							grade 7 events	137130	123361	112979	130713	105681	144410
								74%	72%	43%	73%	45%	65%

2.2 Compared Parameters

Parameter	Planned	Actual	Parameter	Planned	Actual
Instrument	ACIS	ACIS	Obspar format version number	7	7
Detector	ACIS-235678	ACIS-235678	Obspar file type	PREDICTED	ACTUAL
Grating	NONE	NONE	Obspar update status	NONE	UPDATED
Data mode	FAINT	FAINT	Number of optional ACIS chips dropped	0	0
Observation mode	POINTING	POINTING	On-chip summing requested	N	N
[deg] Pointing RA	64.985855	65.01078284267598	Subarray requested	NONE	NONE
[deg] Pointing Dec	-50.403187	-50.38103910084644	Alternating exposures requested	N	N
[deg] Pointing Roll	23.400189	23.57601577934314	[s] Primary exposure time	0.000000	3.2
[deg] Roll angle	18.650000	18.650000			
[deg] Roll tolerance	5.000000	5.000000			
Roll constraint allows 180D rotation	N	N			
[s] Window start time (MET)	246412864.184000	246412864.184000			
[s] Window stop time (MET)	249955204.184000	249955204.184000			
[mm] SIM focus pos	-0.684267	-0.6828225247311905			
[mm] SIM defocus	0	0.001444936568705701			
[mm] SIM translation stage pos	-190.132523	-190.1400660498719			
[mm] SIM translation stage offset	0	0.00754346686406393			
[s] Observation start time (MET)	247711501.184000	247710422.14634			
Observation start date	2005-11-07T00:43:57	2005-11-07T00:27:02			
[s] Observation end time (MET)	247731501.184000	247732870.67238			
Observation end date	2005-11-07T06:17:17	2005-11-07T06:41:10			
Read mode	TIMED	TIMED			

2.3 Aspect

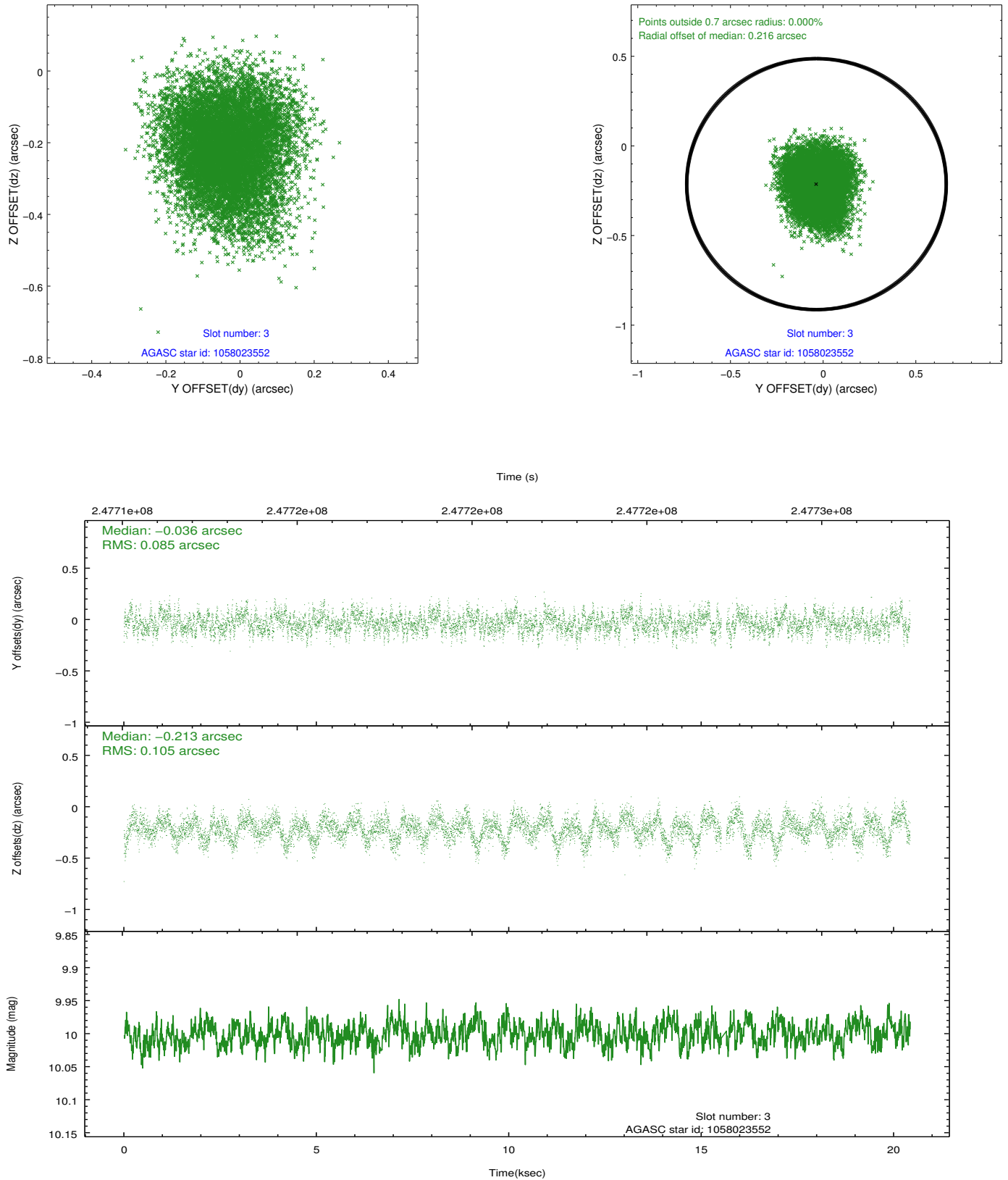


Slot Statistics

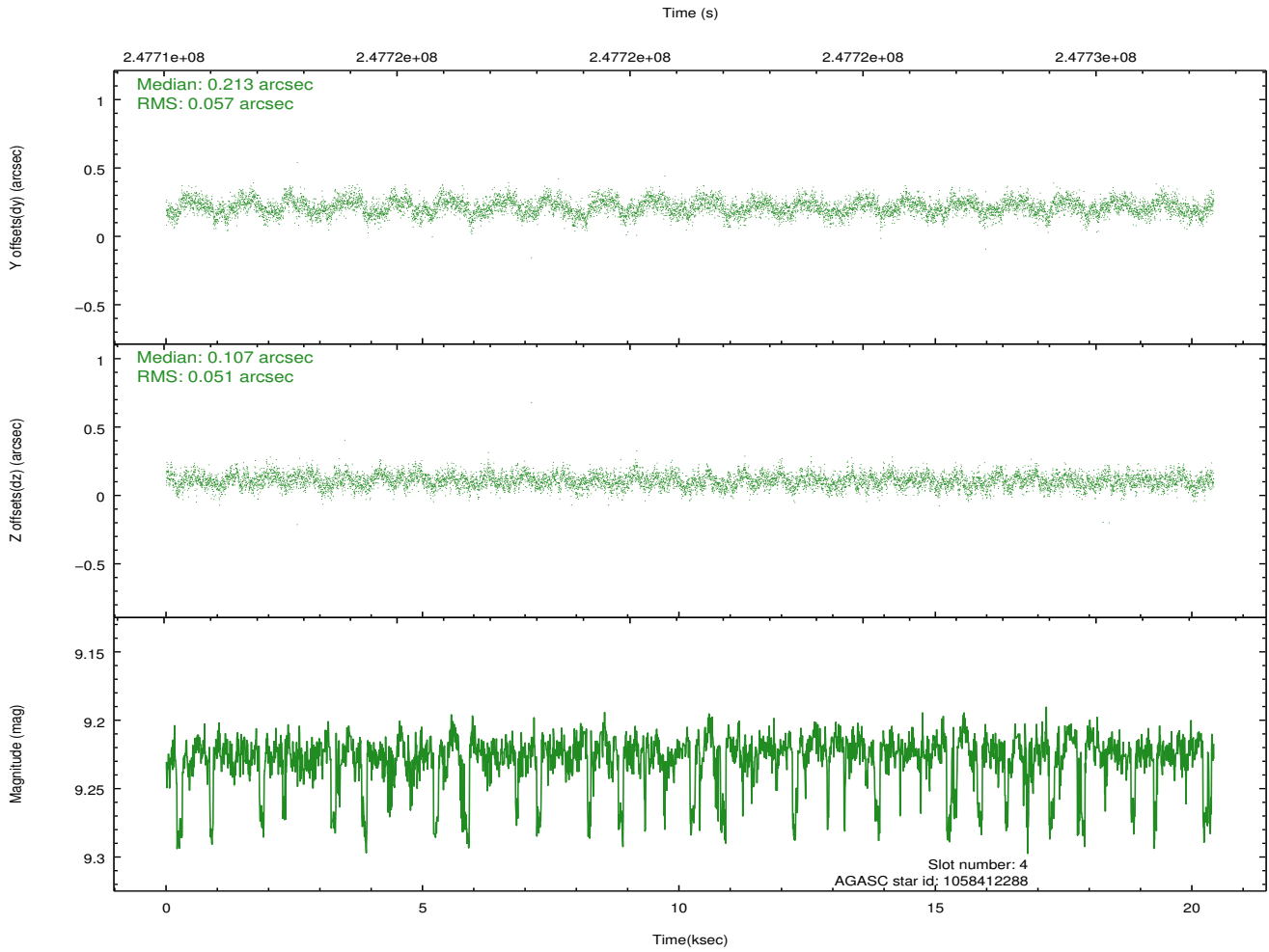
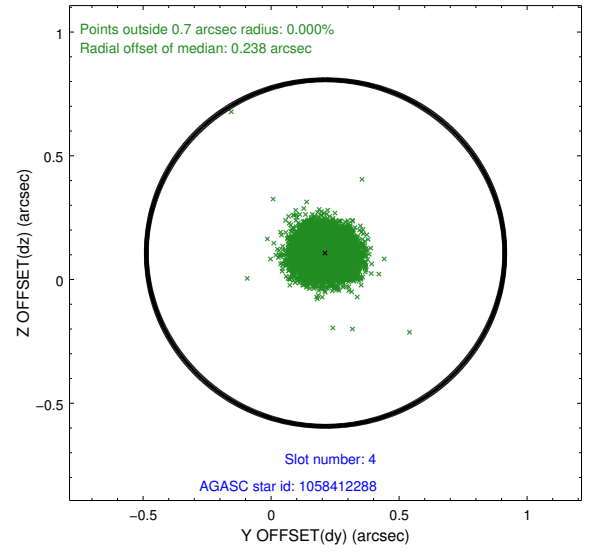
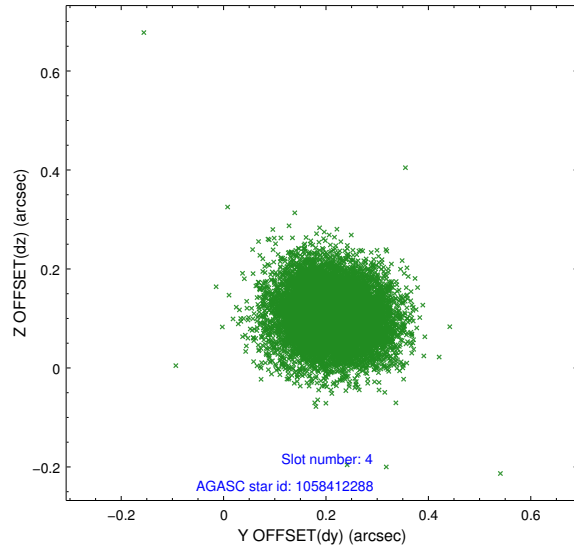
slot	status	id	mag	n_pts	med_dy	med_dz	dr1	dr2	ra	dec	mean_y	mean_z
0	FID	ACIS-S-1	7.19	4982	0.002	-0.047	0.009	0.016	0.000000	0.000000	936.44	-1727.18
1	FID	ACIS-S-4	7.21	4982	0.084	0.036	0.007	0.011	0.000000	0.000000	2154.00	176.89
2	FID	ACIS-S-5	7.23	4982	-0.112	0.023	0.007	0.014	0.000000	0.000000	-1812.34	170.63
3	GUIDE	1058023552	10.00	9892	-0.036	-0.213	0.144	0.232	64.133515	-49.952760	-1172.68	2261.40
4	GUIDE	1058412288	9.22	9878	0.213	0.107	0.081	0.133	65.457997	-50.004198	1571.87	881.79
5	GUIDE	1058416856	8.84	9962	-0.021	0.065	0.089	0.143	64.911305	-50.956617	-945.60	-1761.26
6	GUIDE	1058418424	9.57	9891	-0.062	0.046	0.092	0.151	65.947855	-50.664334	1636.10	-1747.49
7	GUIDE	1058419656	7.74	9961	-0.094	-0.001	0.062	0.102	66.211277	-50.622190	2246.23	-1856.73

2.4 Star Slots

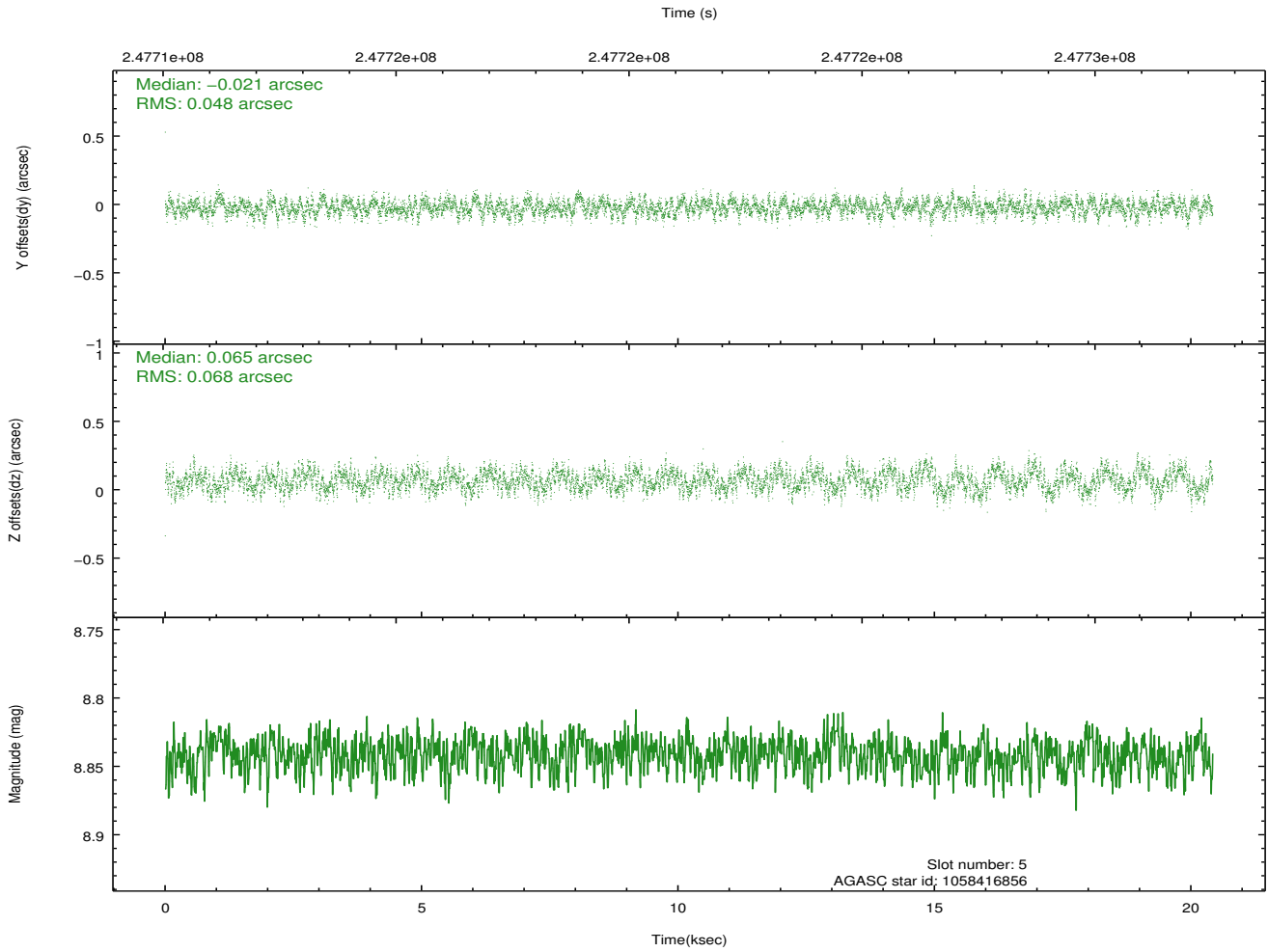
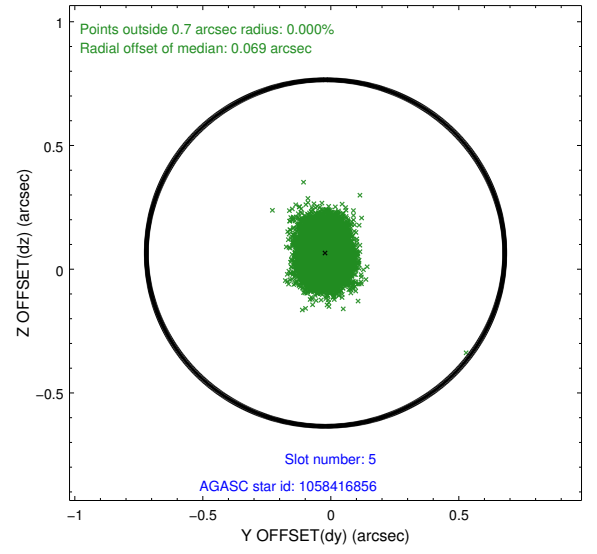
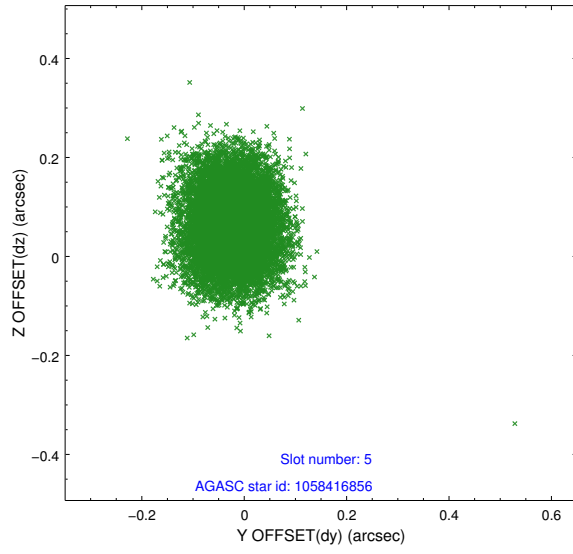
2.4.1 Slot 3



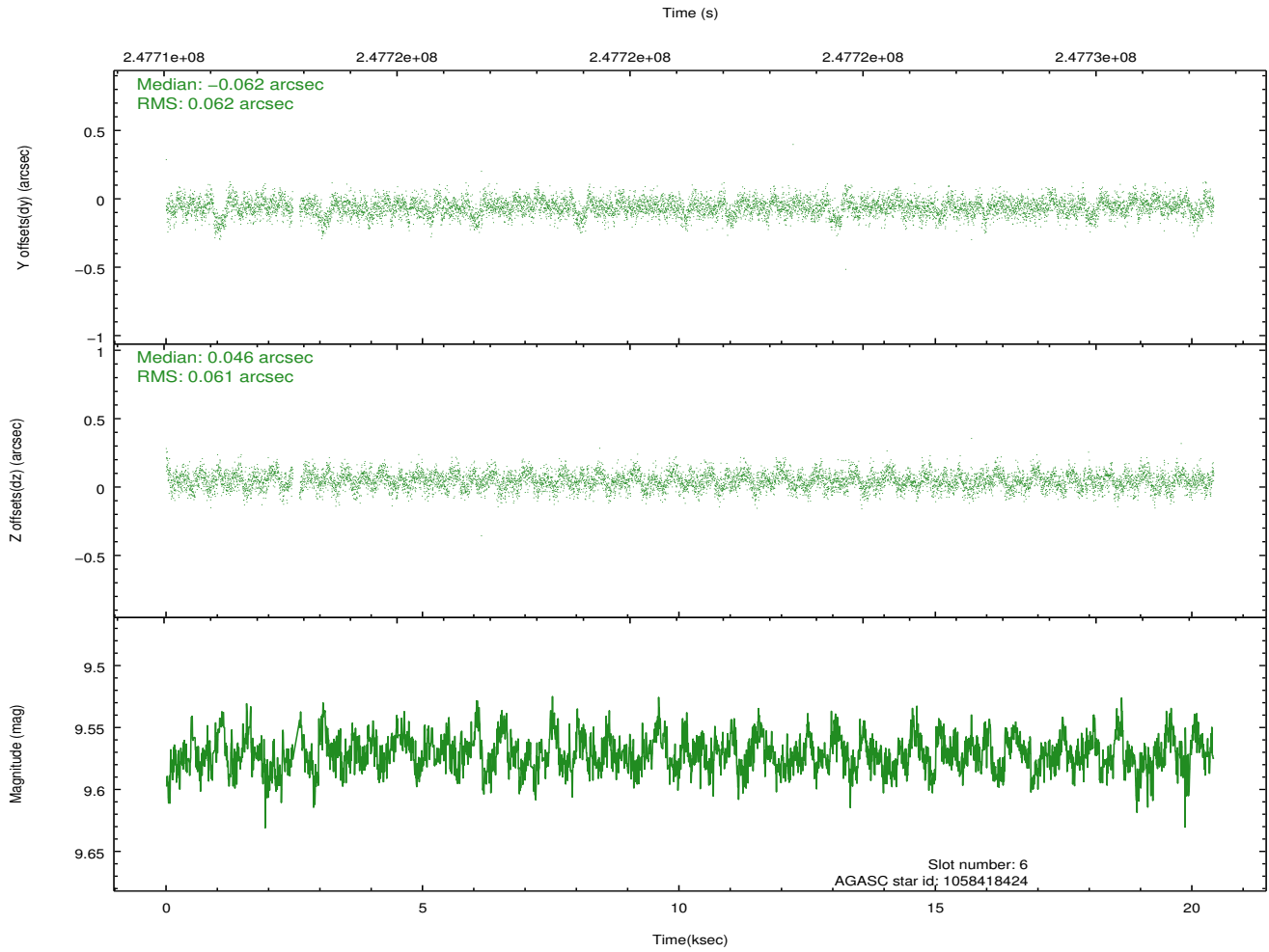
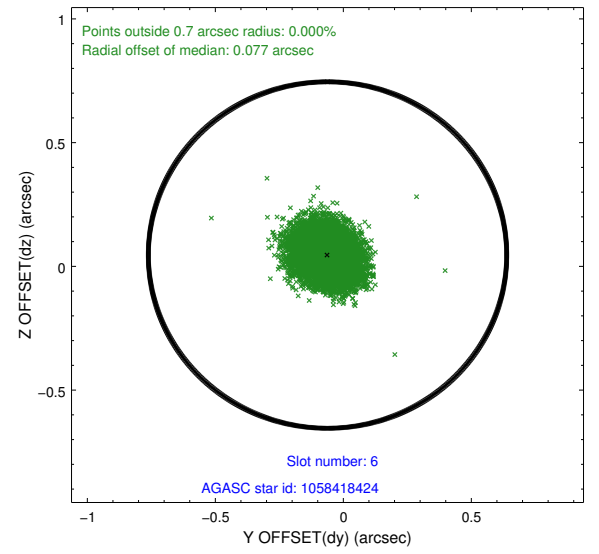
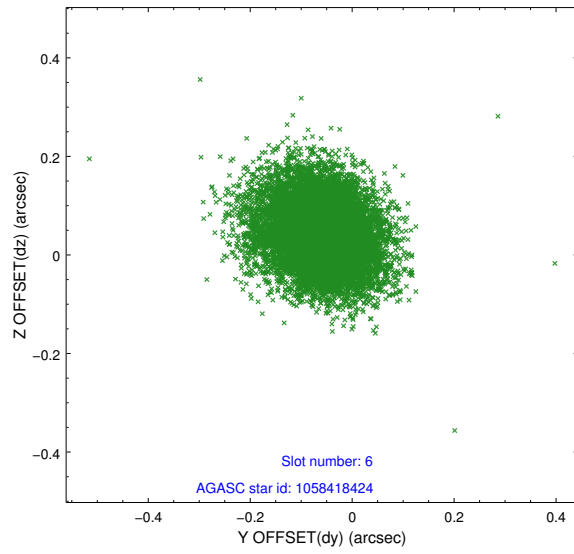
2.4.2 Slot 4



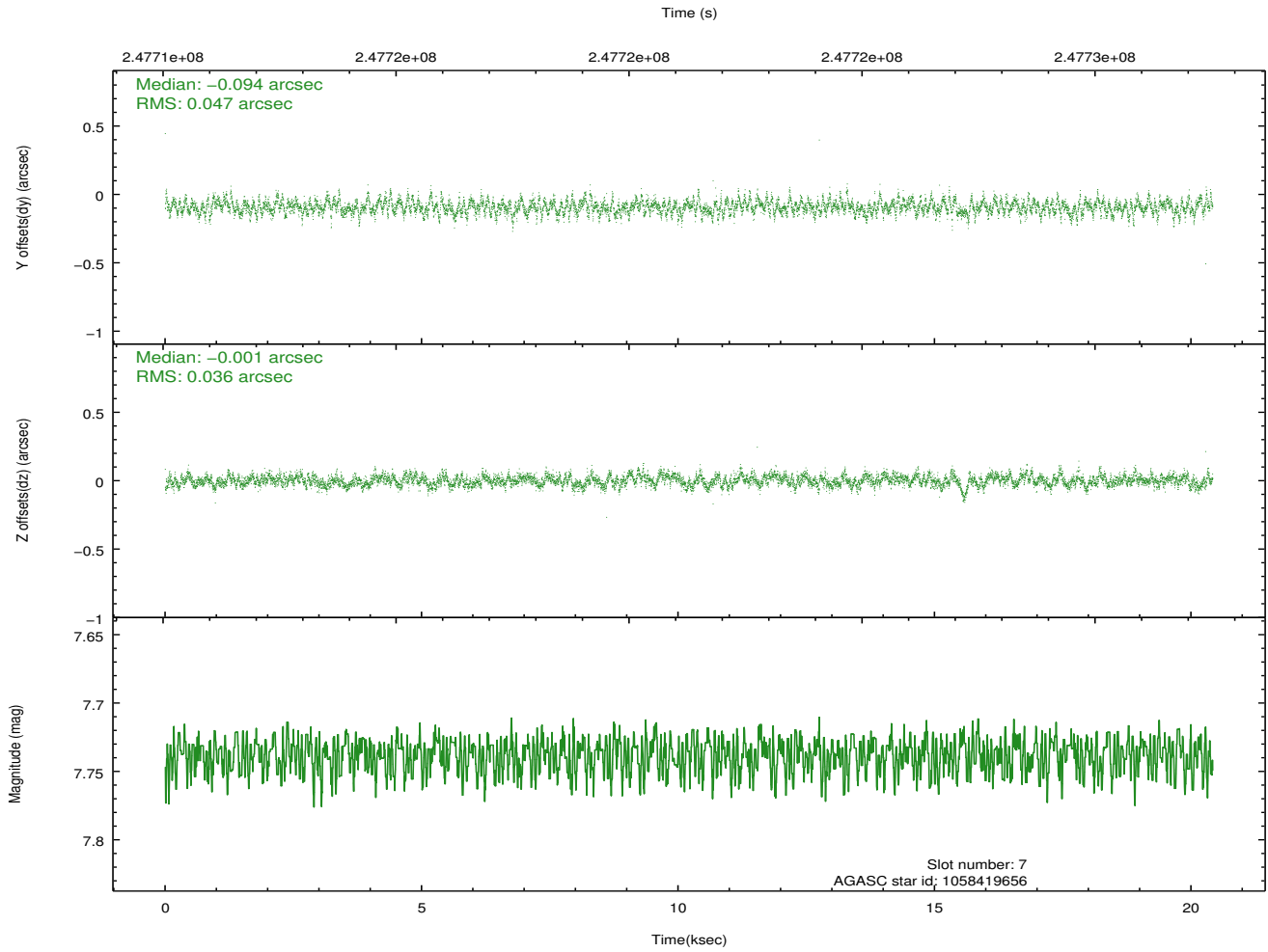
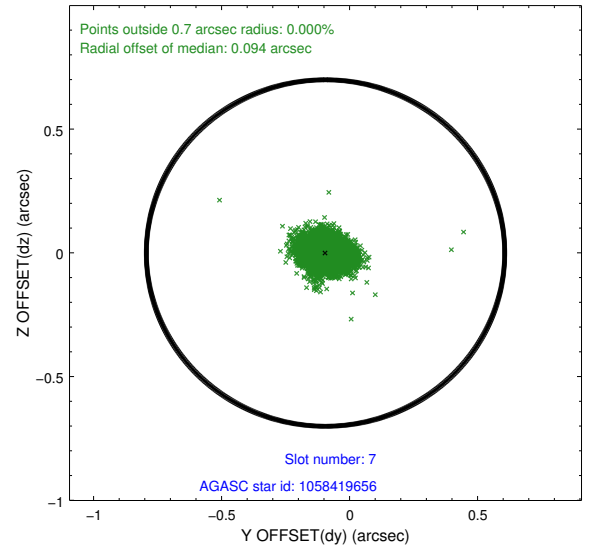
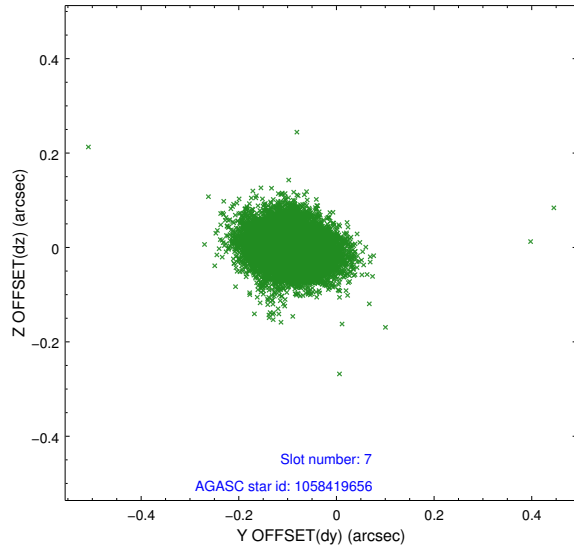
2.4.3 Slot 5



2.4.4 Slot 6

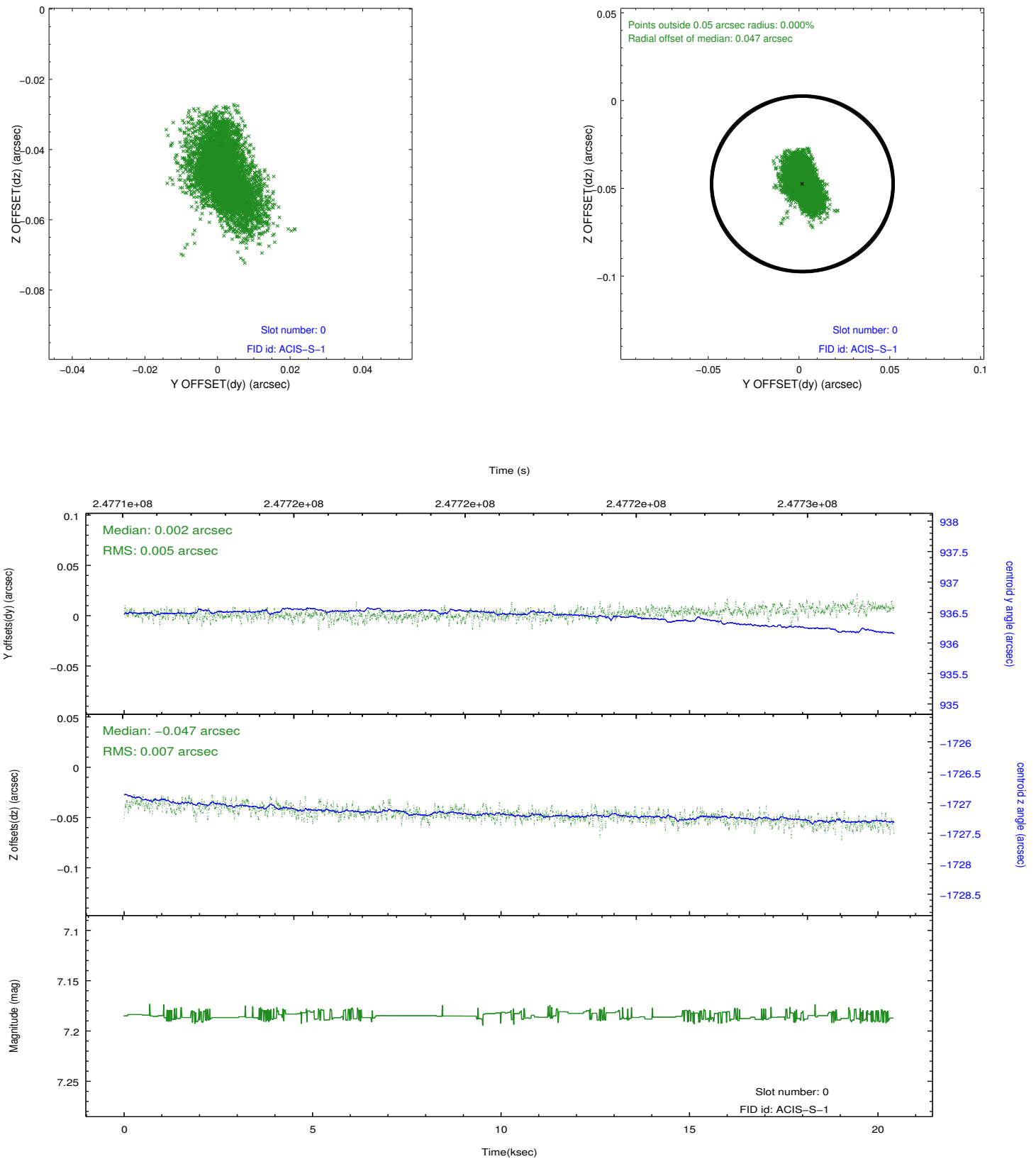


2.4.5 Slot 7

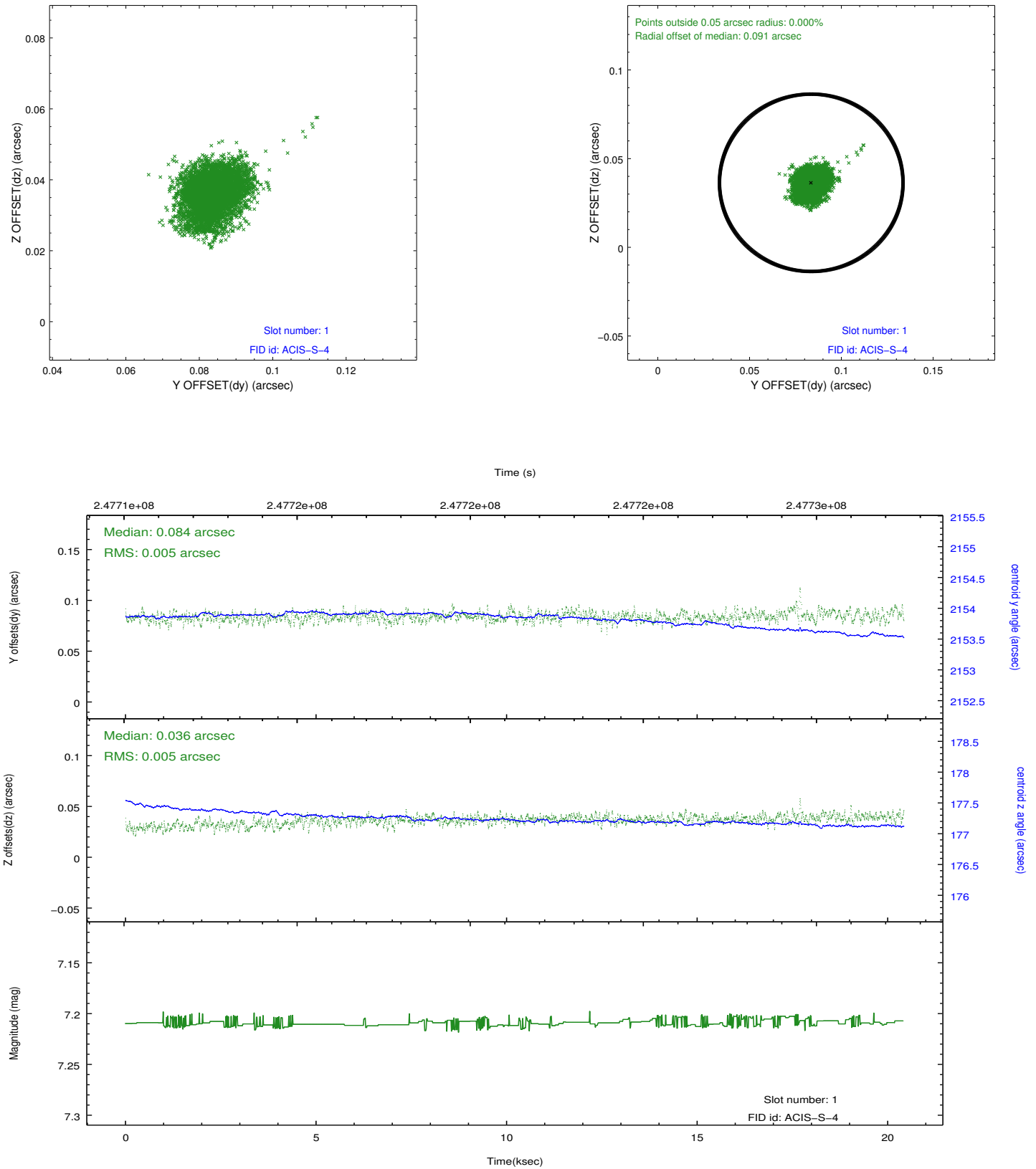


2.5 FID Slots

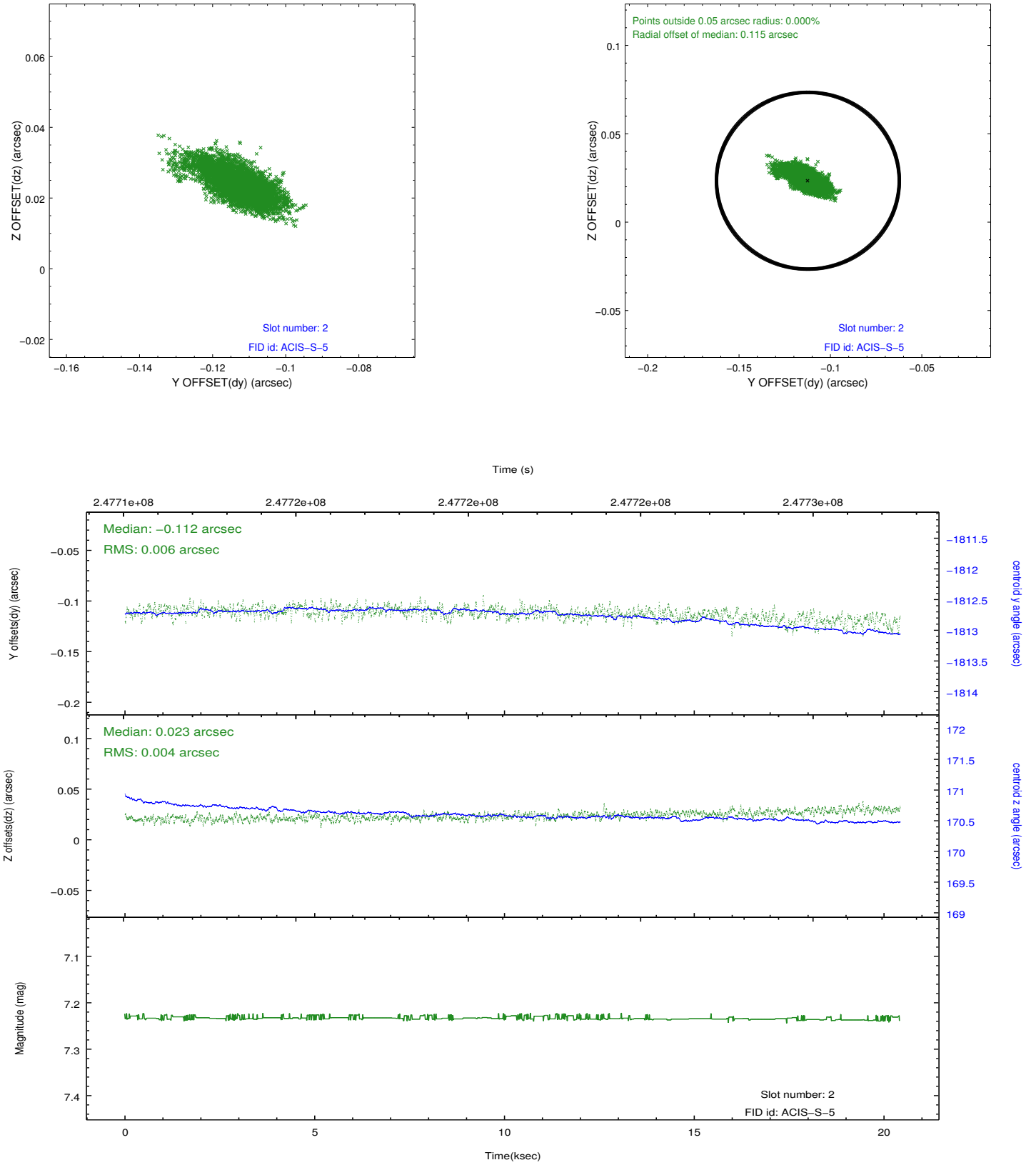
2.5.1 Slot 0



2.5.2 Slot 1



2.5.3 Slot 2



A Summary

A.1 Status

V&V Scientist	Beth Sundheim
V&V Date (YYYY-MM-DD)	2013.01.28
V&V Edition	1
V&V Disposition and Status	OK
V&V Charge Time	19.95839

A.2 Comments

Roll preference met.

Window preference met.