

V&V Reference Report

L2 ASCDS Version : 7.6.7.1

Observation 5541 - L2 Version 002
Chandra X-Ray Center

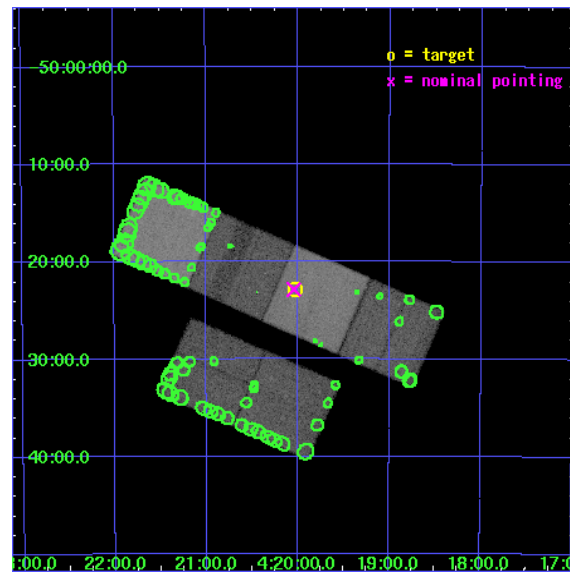
L2 Processing Date : Apr 4 2006

Contents

1	Front	2
2	OBI	3
2.1	OBI	3
2.1.1	Images	3
2.1.2	Bias	3
2.1.3	Parameters	4
2.1.4	Events	4
2.2	Compared Parameters	5
2.3	Aspect	6
2.4	Star Slots	9
2.4.1	Slot 3	9
2.4.2	Slot 4	10
2.4.3	Slot 5	11
2.4.4	Slot 6	12
2.4.5	Slot 7	13
2.5	FID Slots	14
2.5.1	Slot 0	14
2.5.2	Slot 1	15
2.5.3	Slot 2	16
3	Point Sources	17
A	Summary	18
A.1	Status	18
A.2	Comments	18

1 Front

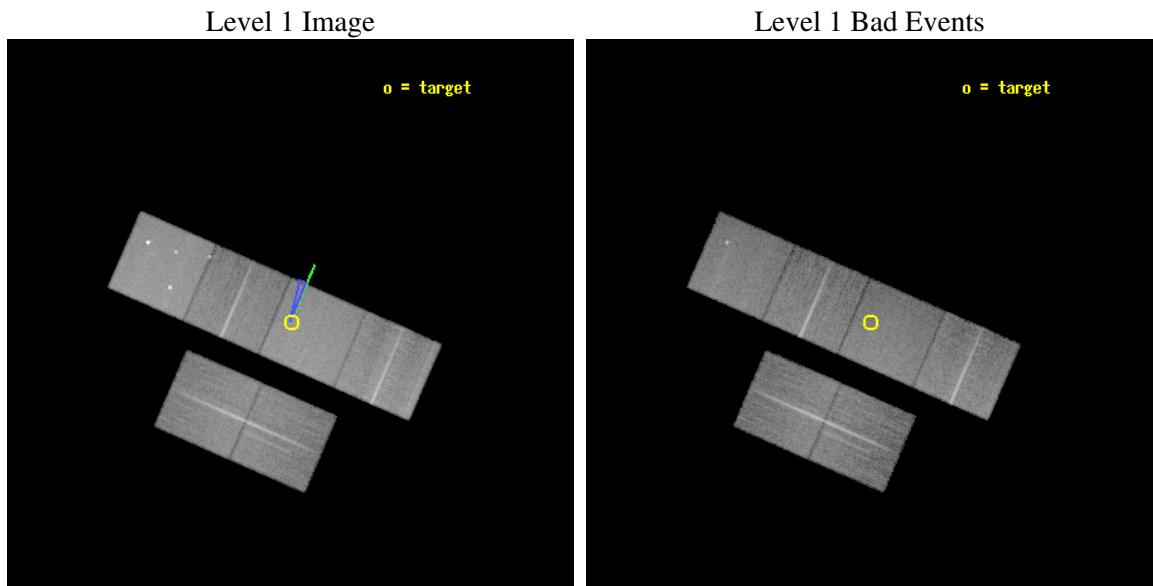
seq_num	500534
obs_id	5541
title	Astrometric study of isolated neutron stars
observer	Dr Christian Motch
object	RX J0420.0-5022
dtcycle	0
cycle	P
ra_targ	65.007917
dec_targ	-50.380028
ra_nom	65.010742865173
dec_nom	-50.381050148582
roll_nom	23.57598497733
revision	2
ontime	19958.399925649
livetime	19705.674648285
ontime2	19958.399925649
ontime3	19955.158945322
ontime5	19958.399925649
ontime6	19958.399925649
ontime7	19958.399925649
ontime8	19955.158935338
l2events	358039



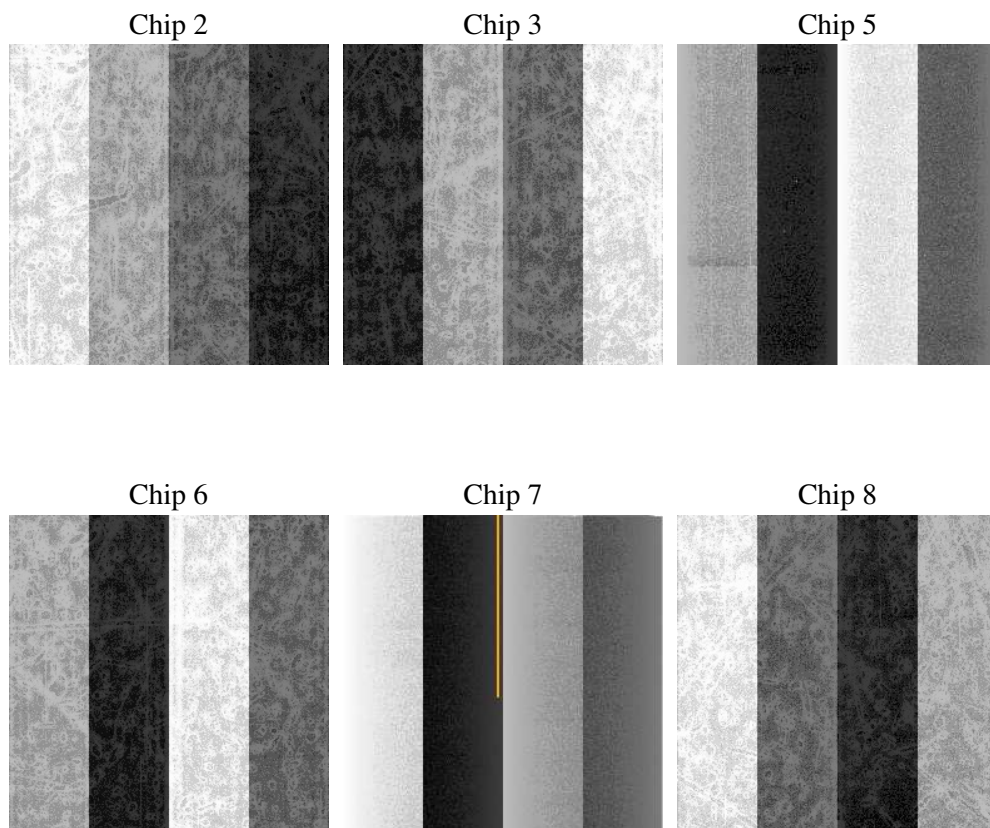
2 OBI

2.1 OBI

2.1.1 Images



2.1.2 Bias



2.1.3 Parameters

obi_num	0
ascdsver	7.6.7.1
caldsver	3.2.1
date	2006-04-04T17:43:59
revision	2

sched_exp_time	20000.000000
ontime	19961.374941379
ontime2	19961.374941379
ontime3	19958.133961052
ontime5	19961.374941379
ontime6	19961.374941379
ontime7	19961.374941379
ontime8	19958.133951068
l1events	1247451

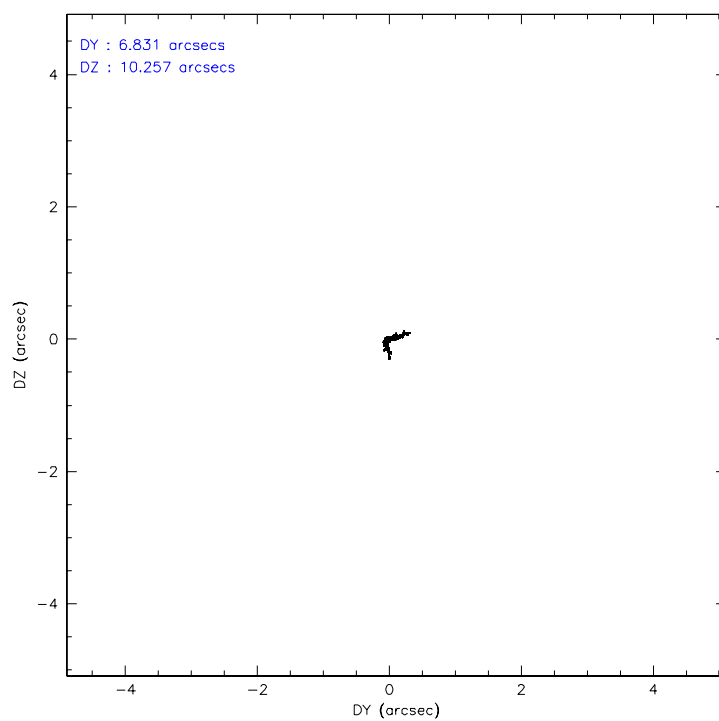
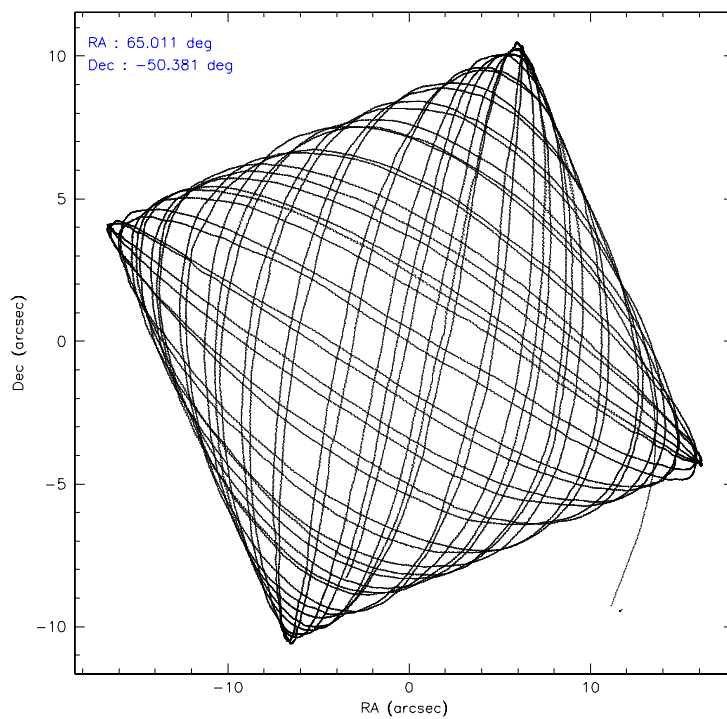
2.1.4 Events

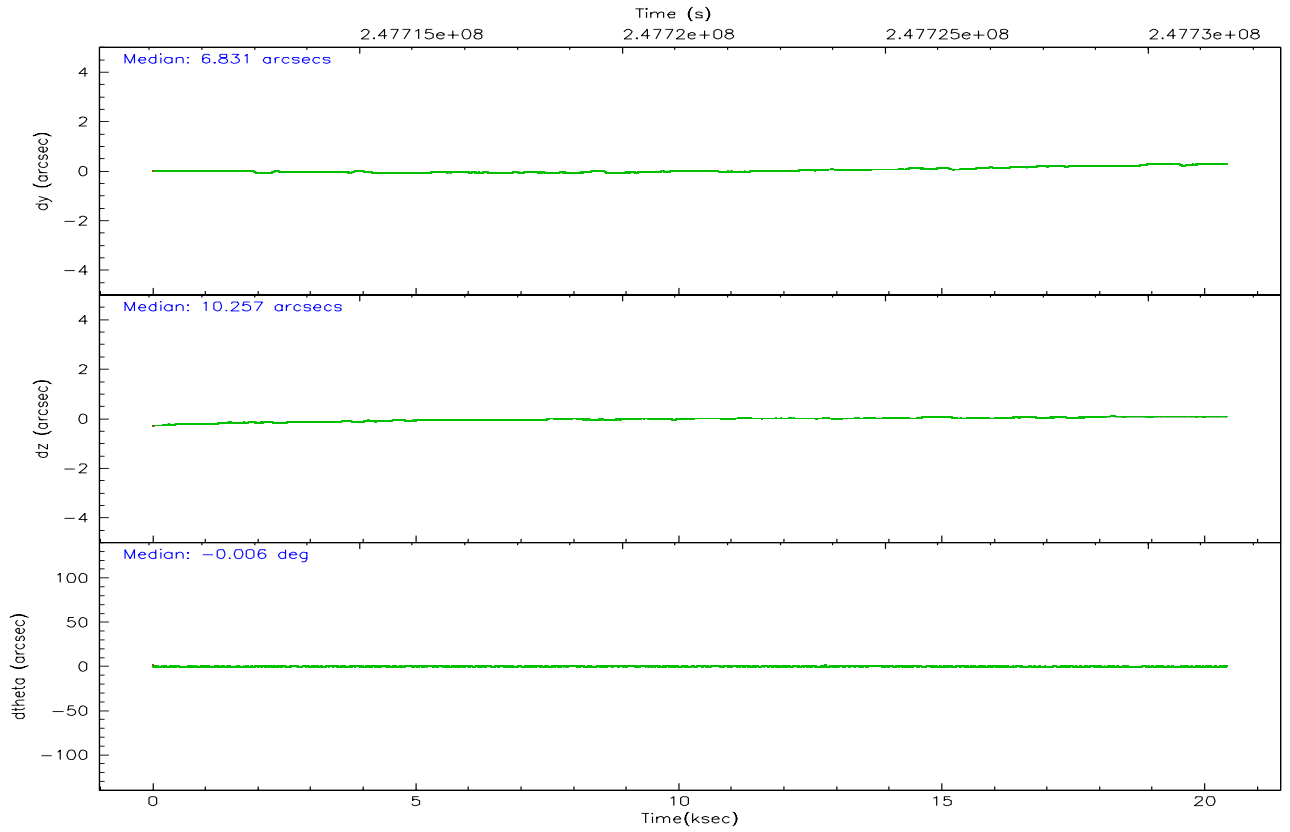
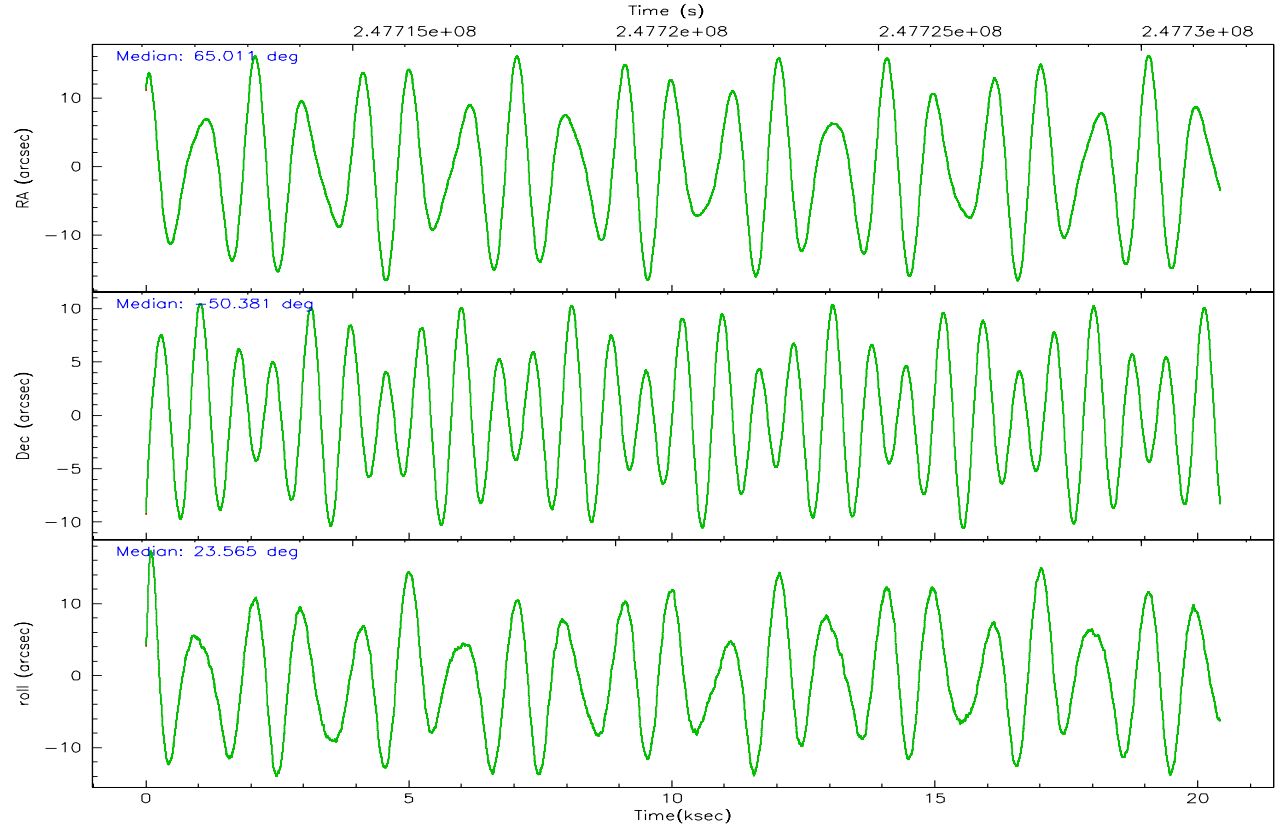
	ccd 2	ccd 3	ccd 5	ccd 6	ccd 7	ccd 8		ccd 2	ccd 3	ccd 5	ccd 6	ccd 7	ccd 8
level 1 events	183753	170443	260534	177820	234032	220869	grade 0 events	24969	24281	12887	22112	6351	30586
rejected events	143538	130503	135778	138411	136146	154298		13%	14%	4%	12%	2%	13%
rejected %	78%	76%	52%	77%	58%	69%	grade 1 events	184	203	1074	134	175	251
								0%	0%	0%	0%	0%	0%
							grade 2 events	6100	5877	39067	6820	23634	12206
								3%	3%	14%	3%	10%	5%
							grade 3 events	2539	2668	2544	2543	4568	5674
								1%	1%	0%	1%	1%	2%
							grade 4 events	2466	2658	2497	2529	4390	5256
								1%	1%	0%	1%	1%	2%
							grade 5 events	6222	6932	11411	7559	14058	9610
								3%	4%	4%	4%	6%	4%
							grade 6 events	4143	4461	67781	5409	58952	12874
								2%	2%	26%	3%	25%	5%
							grade 7 events	137130	123363	123273	130714	121904	144412
								74%	72%	47%	73%	52%	65%

2.2 Compared Parameters

Parameter	Planned	Actual	Parameter	Planned	Actual
Instrument	ACIS	ACIS	Obspar format version number	6	6
Detector	ACIS-235678	ACIS-235678	Obspar file type	PREDICTED	ACTUAL
Grating	NONE	NONE	Obspar update status	NONE	UPDATED
Data mode	FAINT	FAINT	On-chip summing requested	N	N
Observation mode	POINTING	POINTING	Subarray requested	NONE	NONE
Pointing RA	64.985855	65.01074286517267	Alternating exposures requested	N	N
Pointing Dec	-50.403187	-50.38105014858233	Primary exposure time	0.000000	3.2
Pointing Roll	23.400189	23.57598497732955			
Roll angle	18.650000	18.650000			
Roll tolerance	5.000000	5.000000			
Roll constraint allows 180D rotation	N	N			
Window start time	246412864.184000	246412864.184000			
Window stop time	249955204.184000	249955204.184000			
SIM focus pos (mm)	-0.684267	-0.6828225247311905			
SIM defocus (mm)	0	0.001444936568705701			
SIM translation stage pos (mm)	-190.132523	-190.1400660498719			
SIM translation stage offset (mm)	0	0.00754346686406393			
Observation start time	247711501.184000	247710422.14634			
Observation start date	2005-11-07T00:43:57	2005-11-07T00:27:02			
Observation end time	247731501.184000	247732870.67238			
Observation end date	2005-11-07T06:17:17	2005-11-07T06:41:10			
Read mode	TIMED	TIMED			

2.3 Aspect



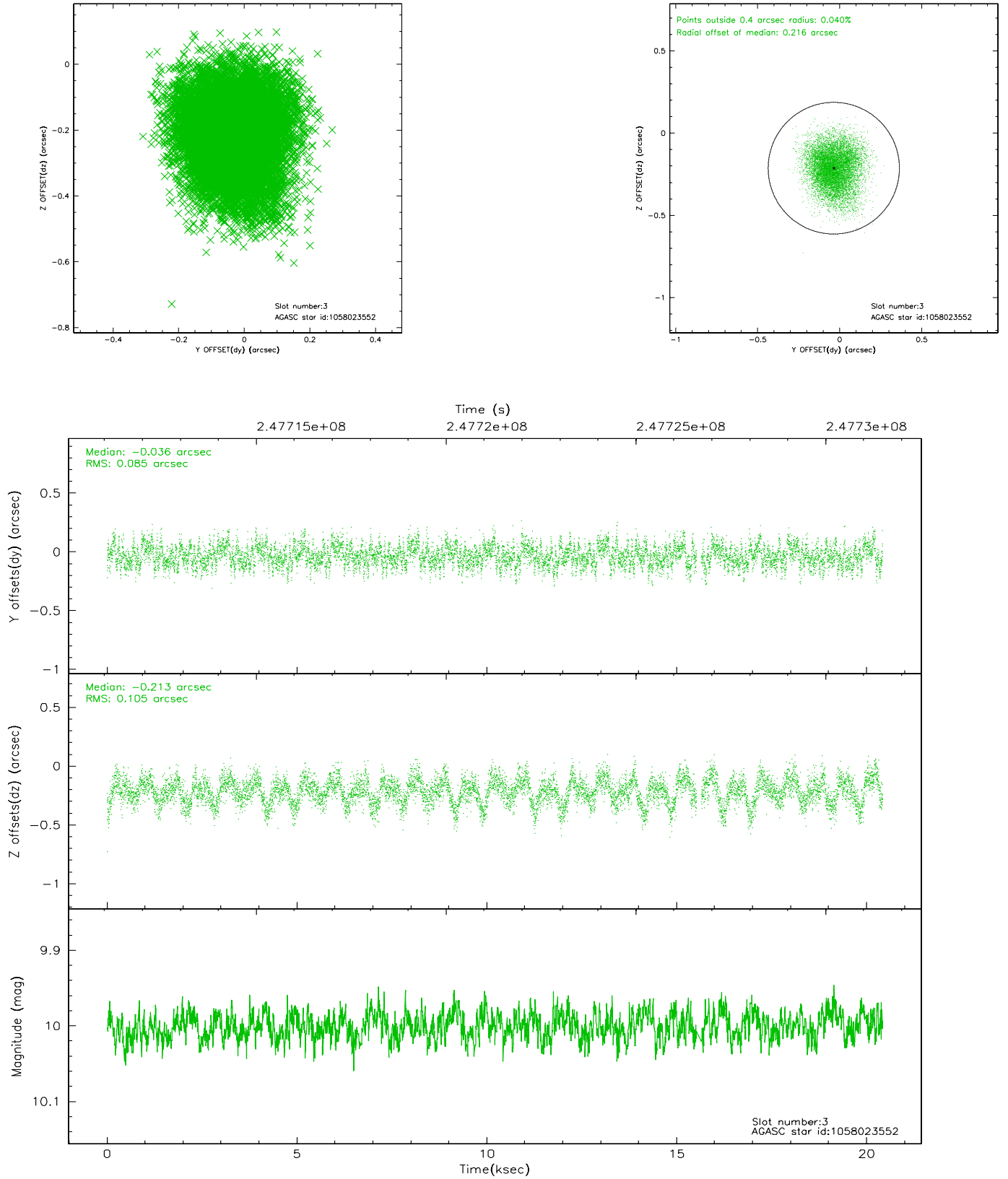


Slot Statistics

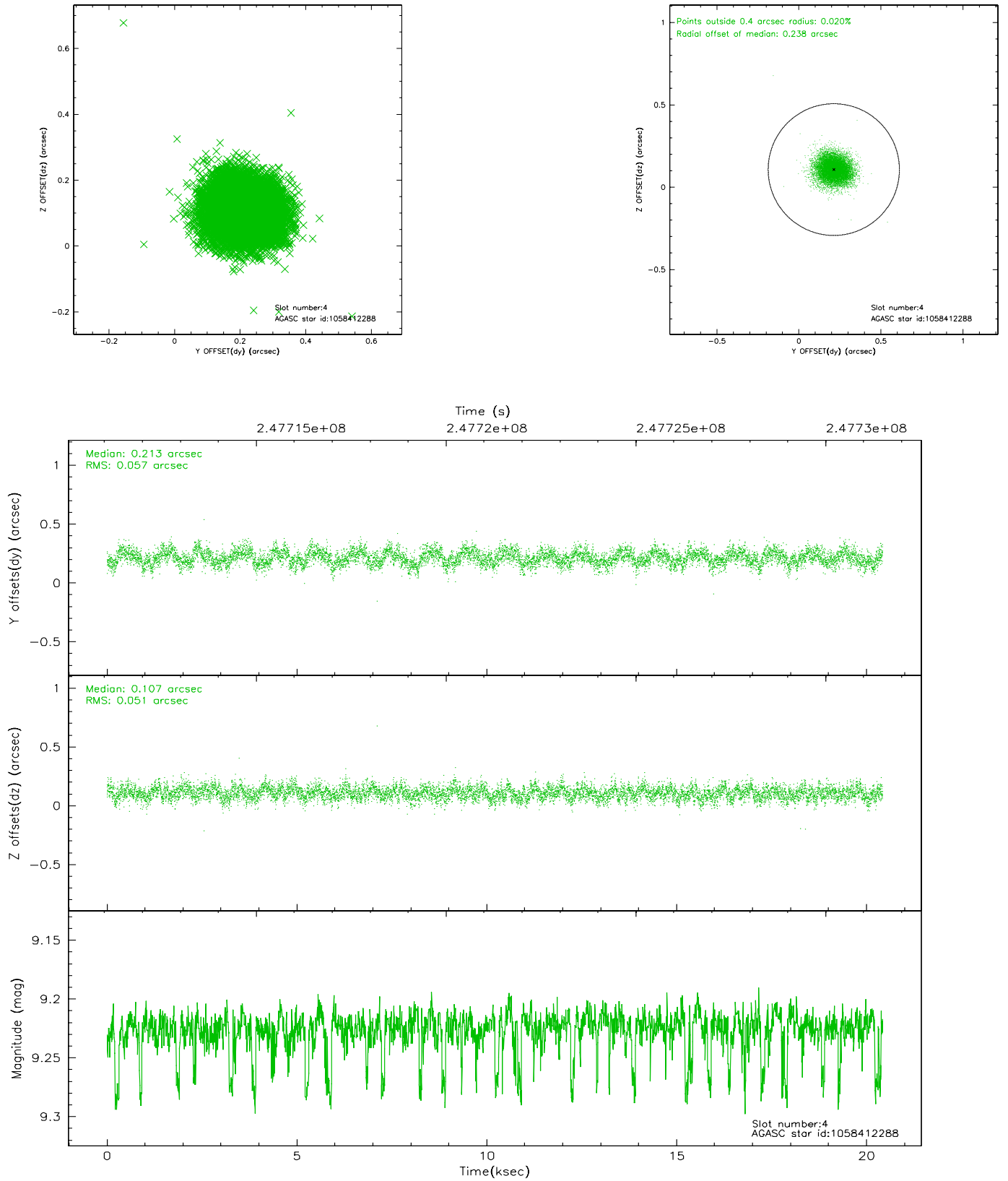
slot	status	id	mag	n_pts	med_dy	med_dz	dr1	dr2	ra	dec	mean_y	mean_z
0	FID	ACIS-S-1	7.19	4982	-0.008	-0.024	0.009	0.016	0.000000	0.000000	936.42	-1727.13
1	FID	ACIS-S-4	7.21	4982	0.052	0.025	0.007	0.011	0.000000	0.000000	2153.96	176.90
2	FID	ACIS-S-5	7.23	4982	-0.071	0.012	0.007	0.013	0.000000	0.000000	-1812.31	170.64
3	GUIDE	1058023552	10.00	9891	-0.036	-0.213	0.144	0.232	64.133515	-49.952760	-1172.68	2261.40
4	GUIDE	1058412288	9.22	9878	0.213	0.107	0.081	0.133	65.457997	-50.004198	1571.87	881.79
5	GUIDE	1058416856	8.84	9962	-0.021	0.065	0.089	0.143	64.911305	-50.956617	-945.60	-1761.26
6	GUIDE	1058418424	9.57	9892	-0.062	0.046	0.092	0.151	65.947855	-50.664334	1636.10	-1747.49
7	GUIDE	1058419656	7.74	9961	-0.094	-0.001	0.062	0.102	66.211277	-50.622190	2246.23	-1856.73

2.4 Star Slots

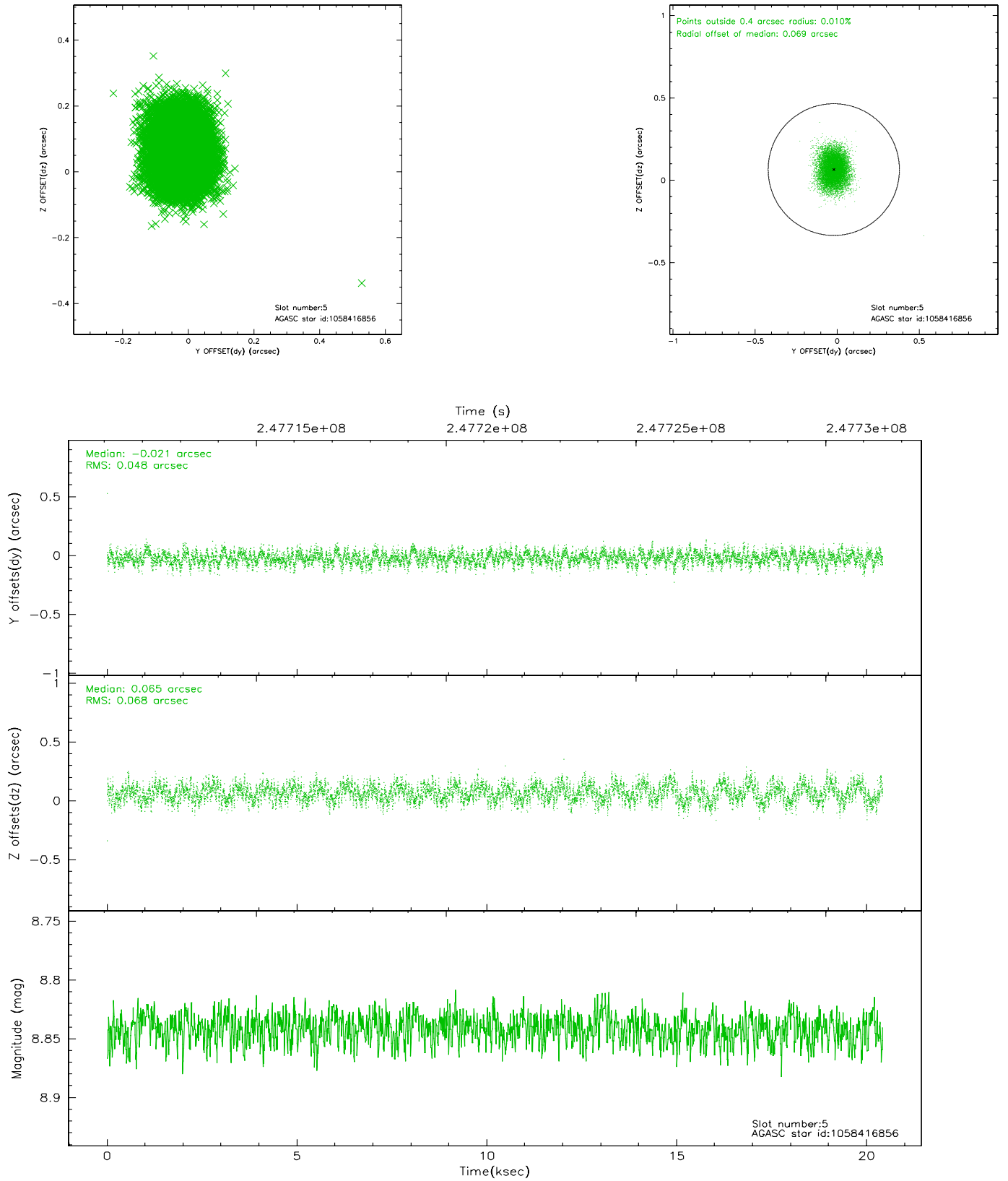
2.4.1 Slot 3



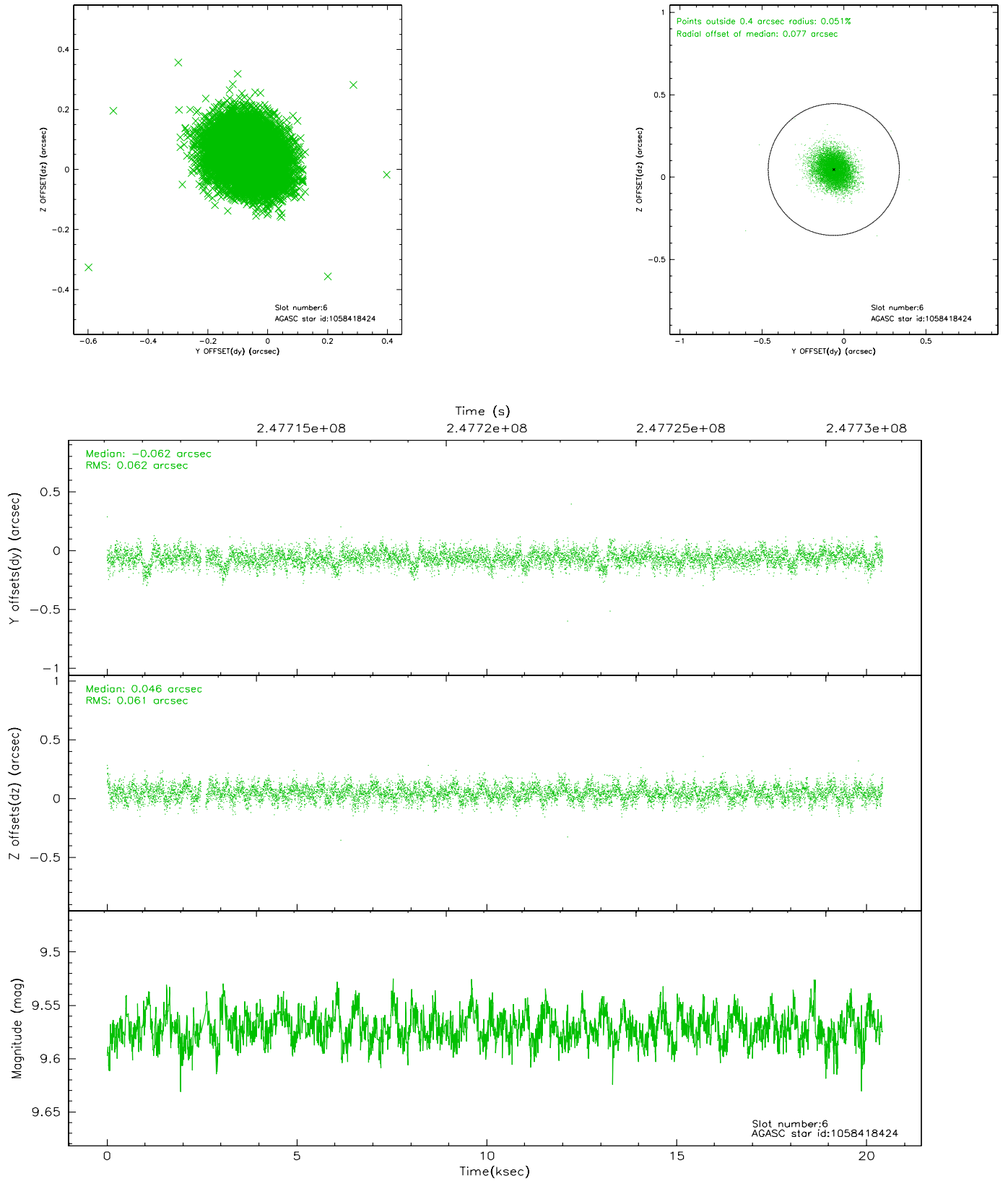
2.4.2 Slot 4



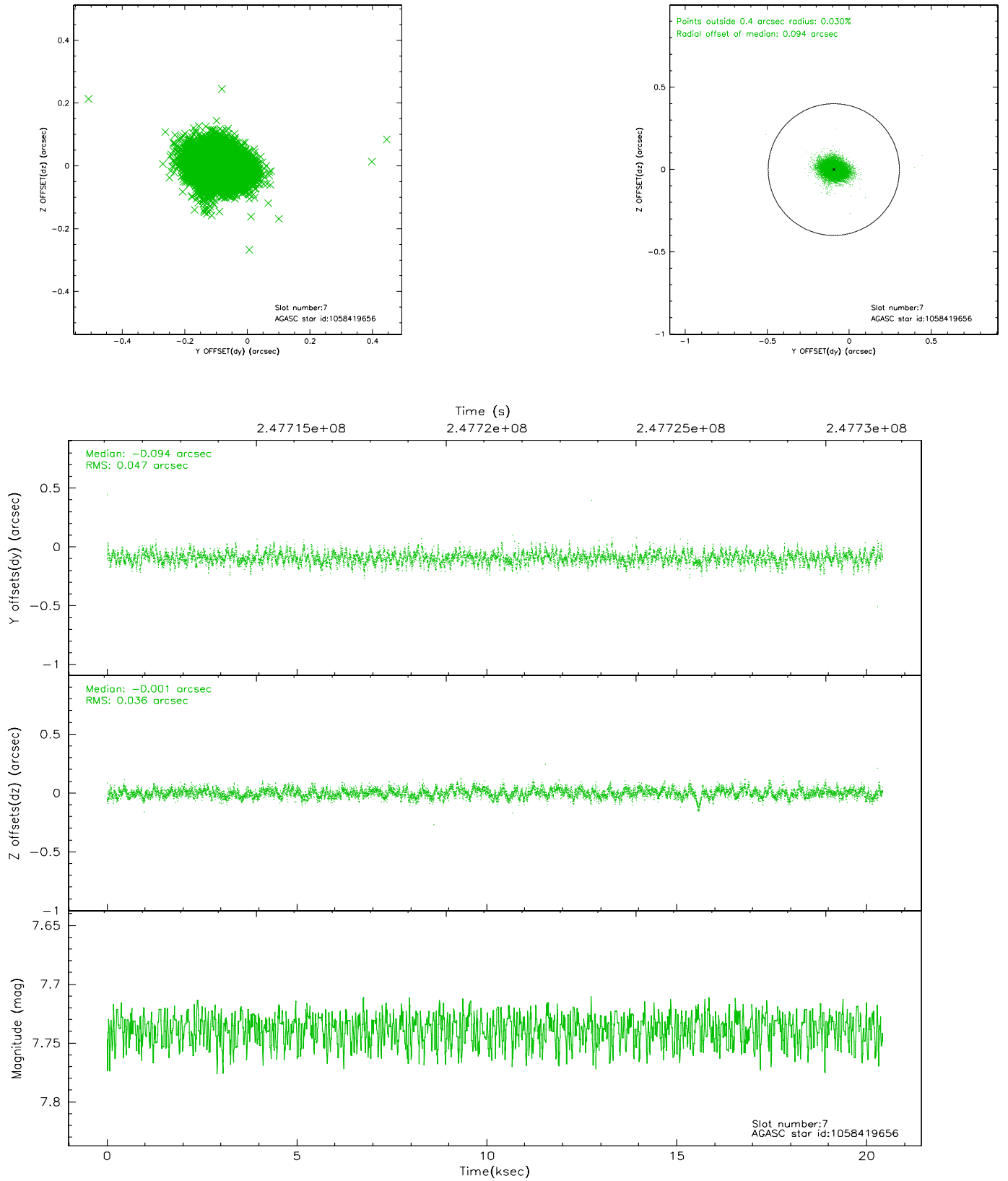
2.4.3 Slot 5



2.4.4 Slot 6

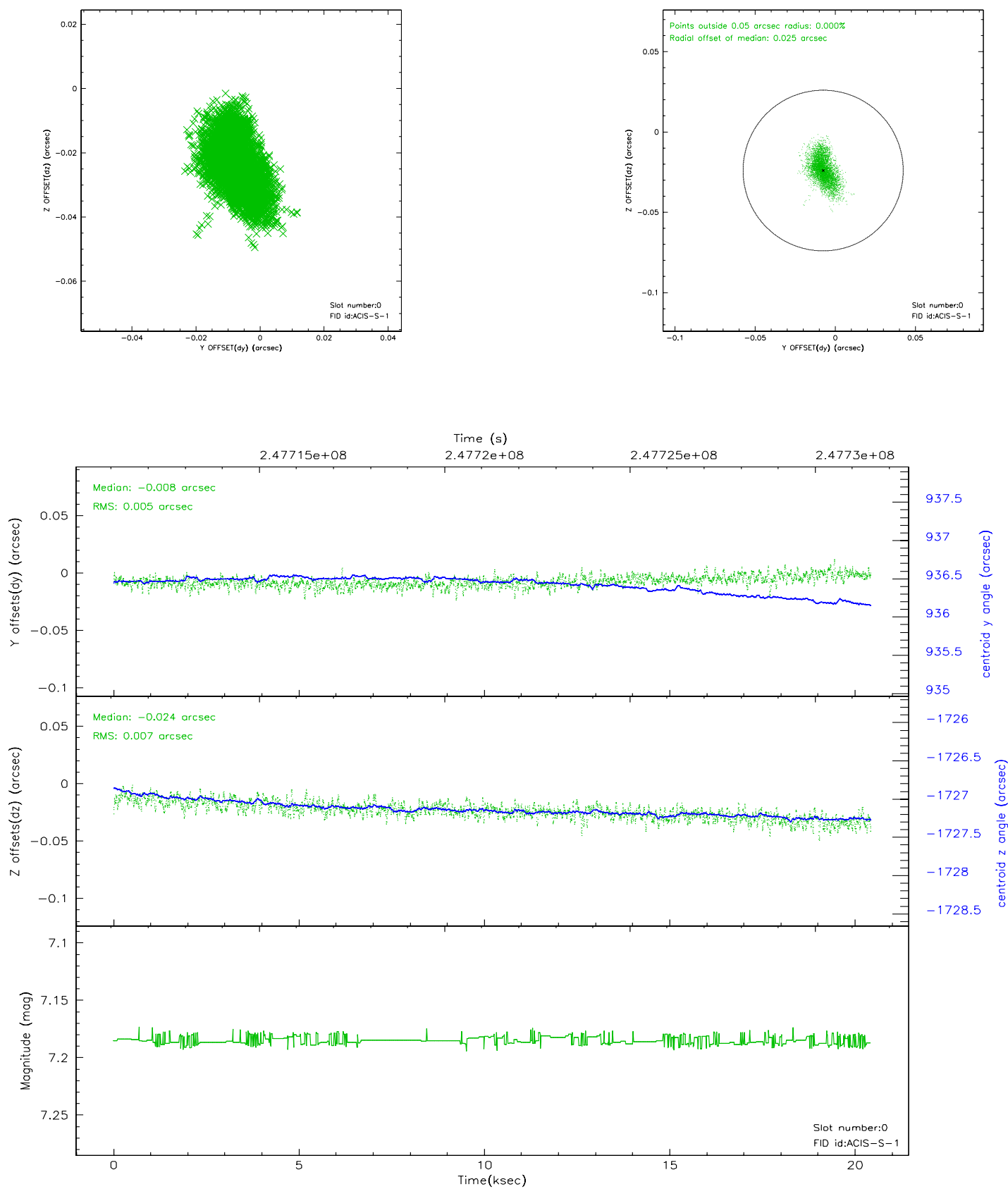


2.4.5 Slot 7

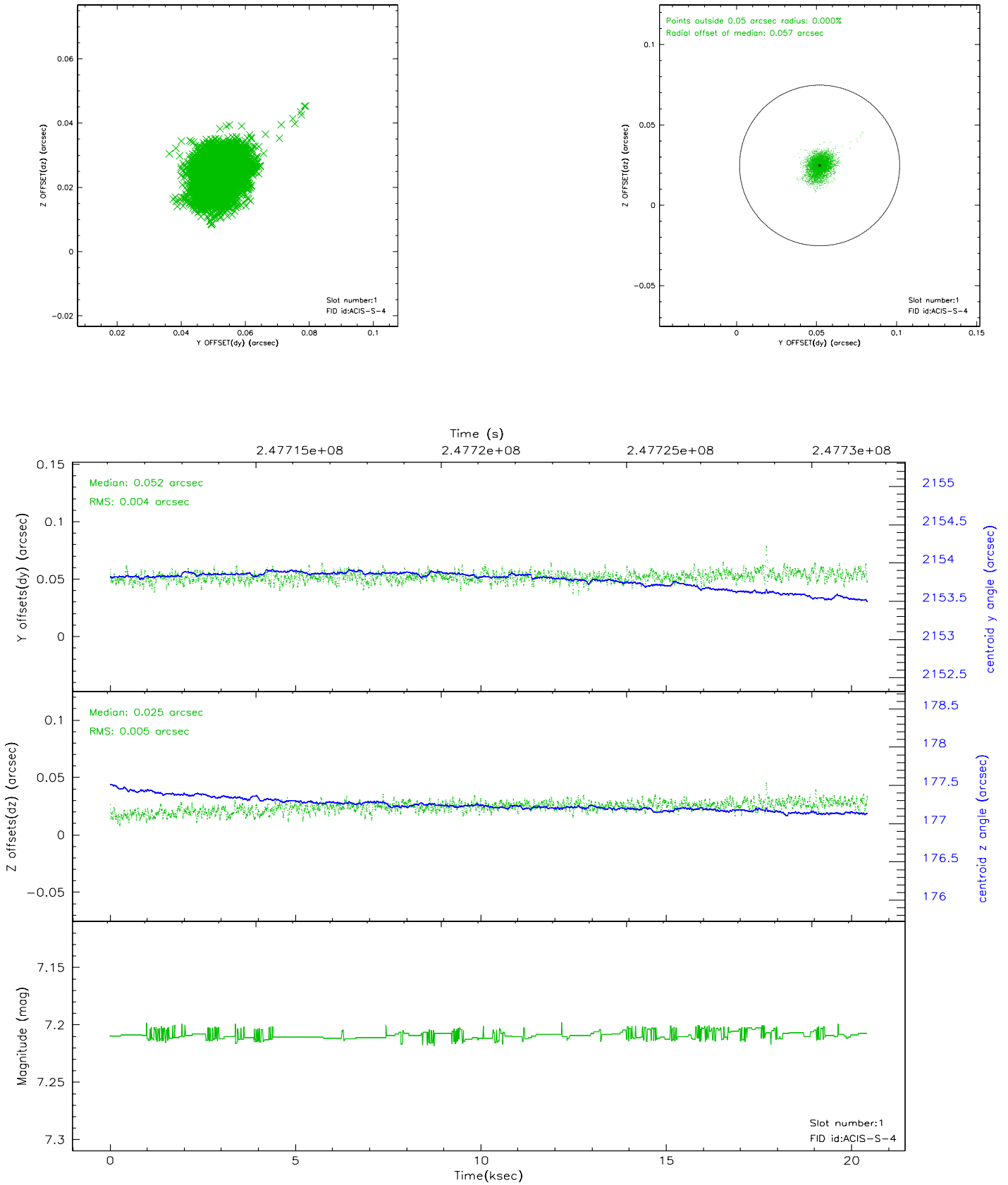


2.5 FID Slots

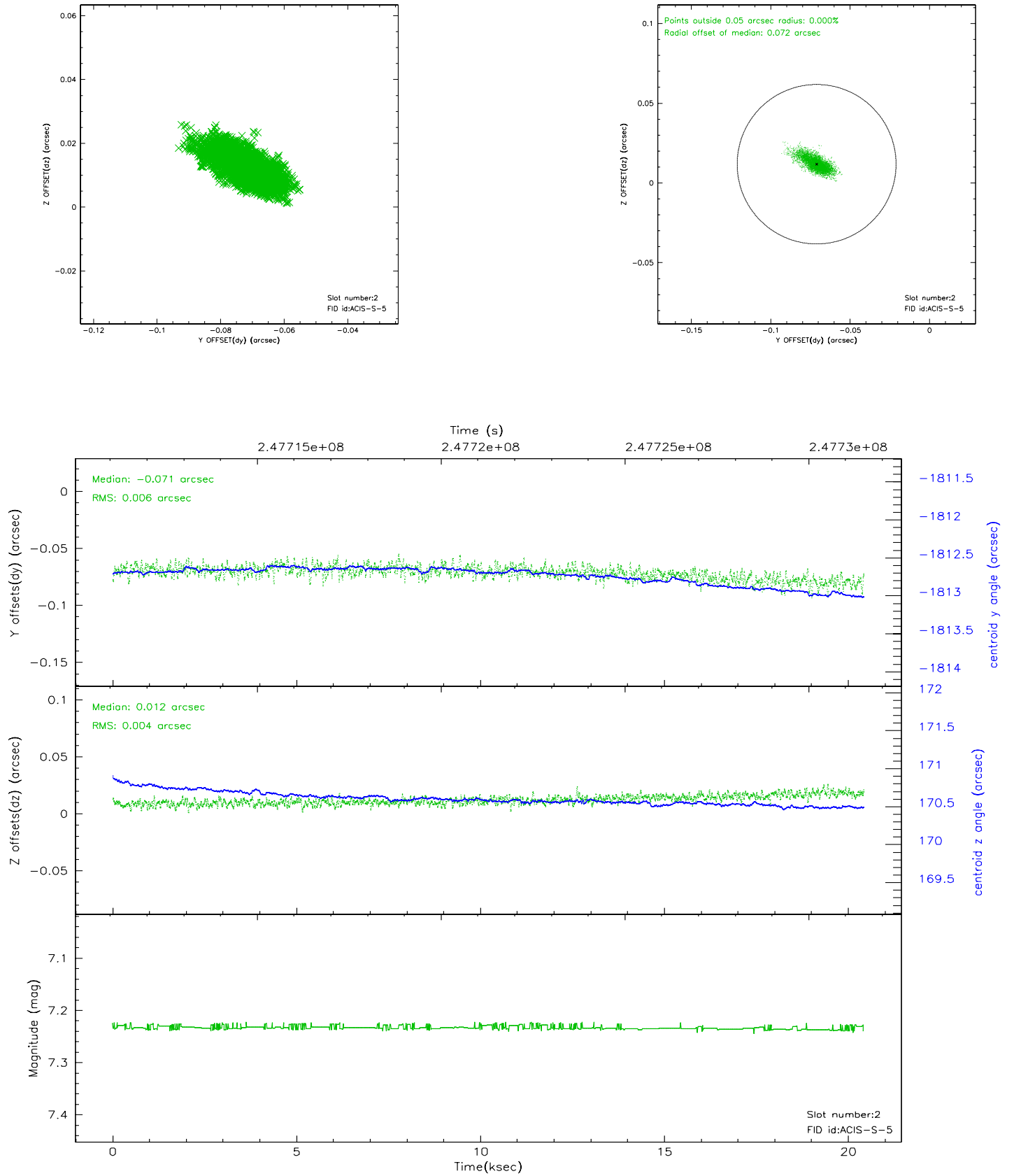
2.5.1 Slot 0



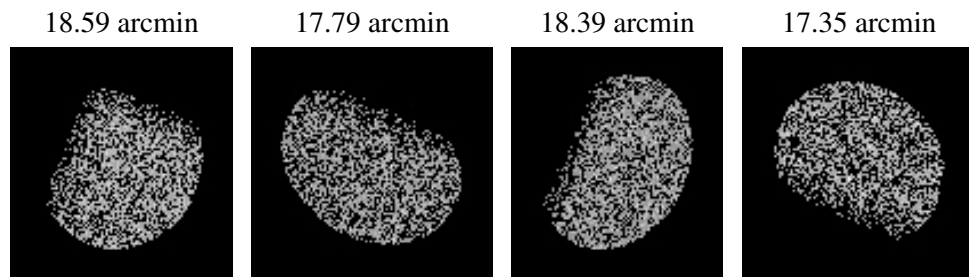
2.5.2 Slot 1



2.5.3 Slot 2



3 Point Sources



A Summary

A.1 Status

V&V Scientist	Beth Sundheim
V&V Date (YYYY-MM-DD)	2006.04.04
V&V Edition	1
V&V Disposition and Status	OK
V&V Charge Time	19.95839

A.2 Comments

Window and roll constraints satisfied.