

# V&V Reference Report

## L2 ASCDS Version : 7.6.7

Observation 5533 - L2 Version 002  
Chandra X-Ray Center

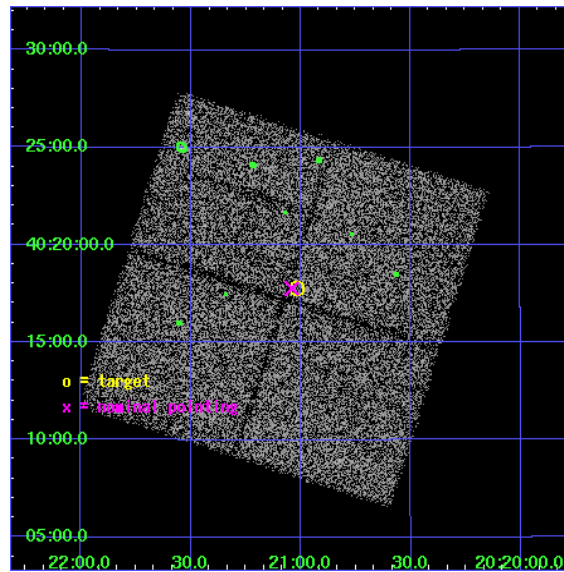
L2 Processing Date: Feb 21 2006

## Contents

<b>1</b>	<b>Front</b>	<b>2</b>
<b>2</b>	<b>OBI</b>	<b>3</b>
2.1	OBI . . . . .	3
2.1.1	Images . . . . .	3
2.1.2	Bias . . . . .	3
2.1.3	Parameters . . . . .	4
2.1.4	Events . . . . .	4
2.2	Compared Parameters . . . . .	5
2.3	Aspect . . . . .	6
2.4	Star Slots . . . . .	9
2.4.1	Slot 3 . . . . .	9
2.4.2	Slot 4 . . . . .	10
2.4.3	Slot 5 . . . . .	11
2.4.4	Slot 6 . . . . .	12
2.4.5	Slot 7 . . . . .	13
2.5	FID Slots . . . . .	14
2.5.1	Slot 0 . . . . .	14
2.5.2	Slot 1 . . . . .	15
2.5.3	Slot 2 . . . . .	16
<b>3</b>	<b>Point Sources</b>	<b>17</b>
<b>A</b>	<b>Summary</b>	<b>18</b>
A.1	Status . . . . .	18
A.2	Comments . . . . .	18

# 1 Front

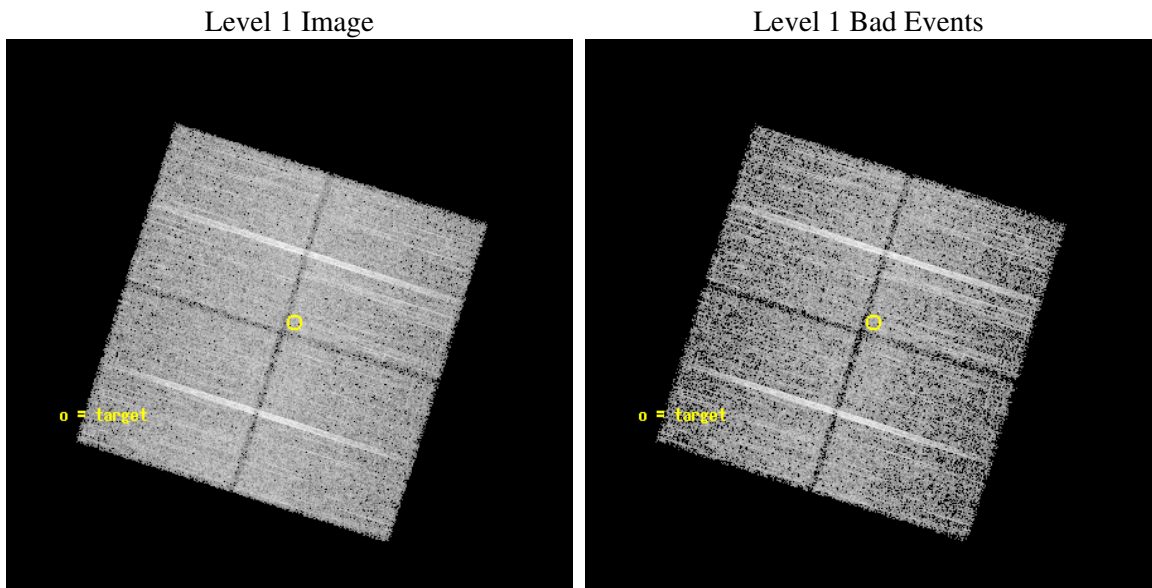
seq_num	500527
obs_id	5533
title	A Search for the X-ray counterpart of the Unidentified Gamma-Ray source 3EG J2020+4017
observer	Dr. Martin Weisskopf
object	3EG J2020+4017
dtcycle	0
cycle	P
ra_targ	305.254167
dec_targ	40.296667
ra_nom	305.26015653503
dec_nom	40.29619833868
roll_nom	17.632797919745
revision	2
ontime	14349.899972409
livetime	14162.407965027
ontime0	14349.899972409
ontime1	14346.758982271
ontime2	14349.899972409
ontime3	14349.899972409
l2events	49640



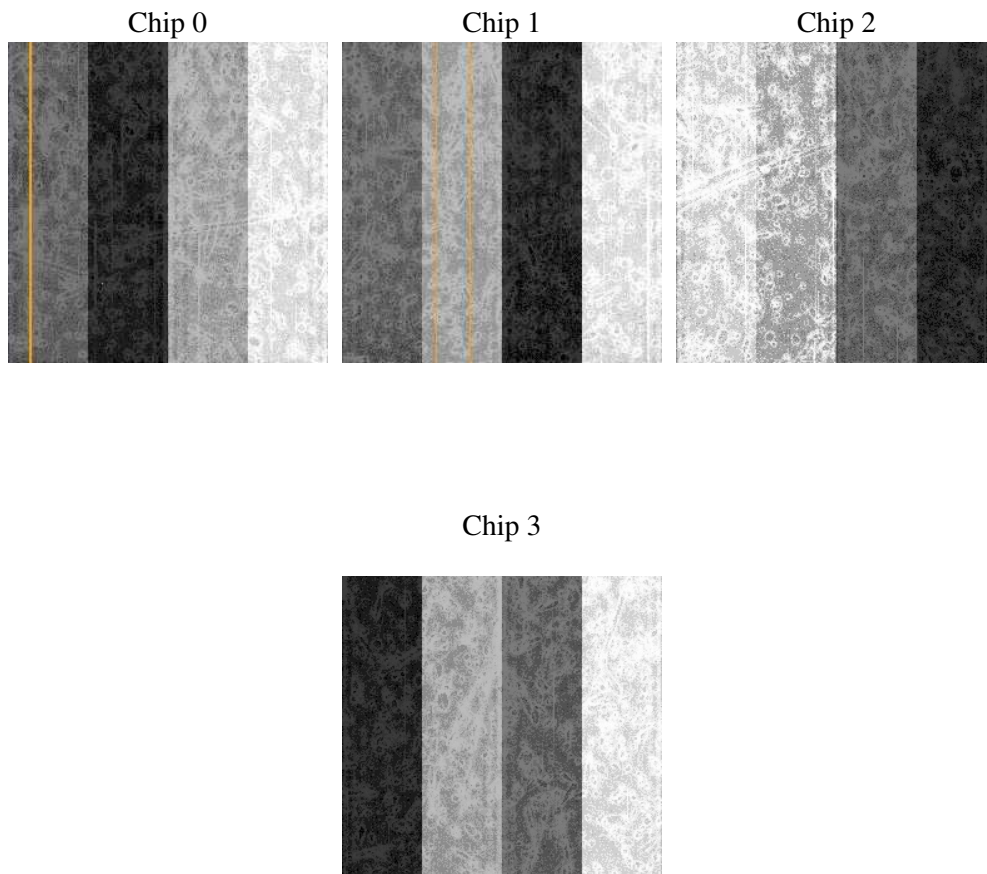
## 2 OBI

### 2.1 OBI

#### 2.1.1 Images



#### 2.1.2 Bias



### 2.1.3 Parameters

obi_num	0
ascdsver	7.6.7
caldsver	3.2.1
date	2006-02-22T00:10:22
revision	2

sched_exp_time	14278.877000
ontime	14354.379389375
ontime0	14354.379389375
ontime1	14351.238399237
ontime2	14354.379389375
ontime3	14354.379389375
l1events	407703

### 2.1.4 Events

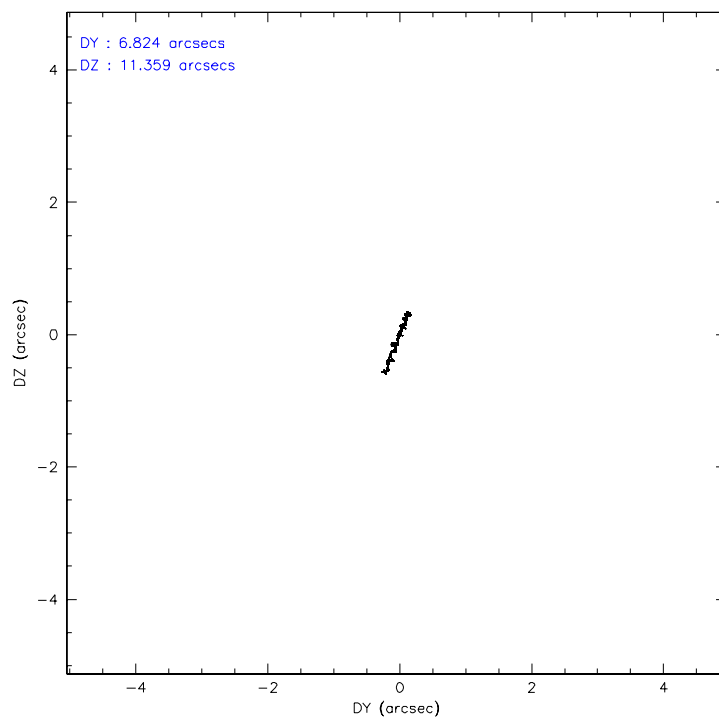
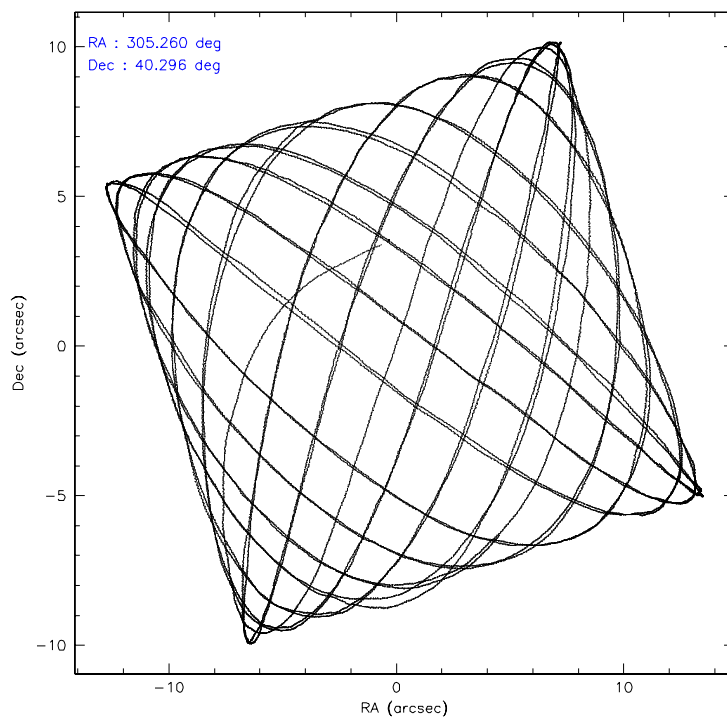
	ccd 0	ccd 1	ccd 2	ccd 3
level 1 events	98130	97956	105756	105861
rejected events	83368	82831	91455	92703
rejected %	84%	84%	86%	87%

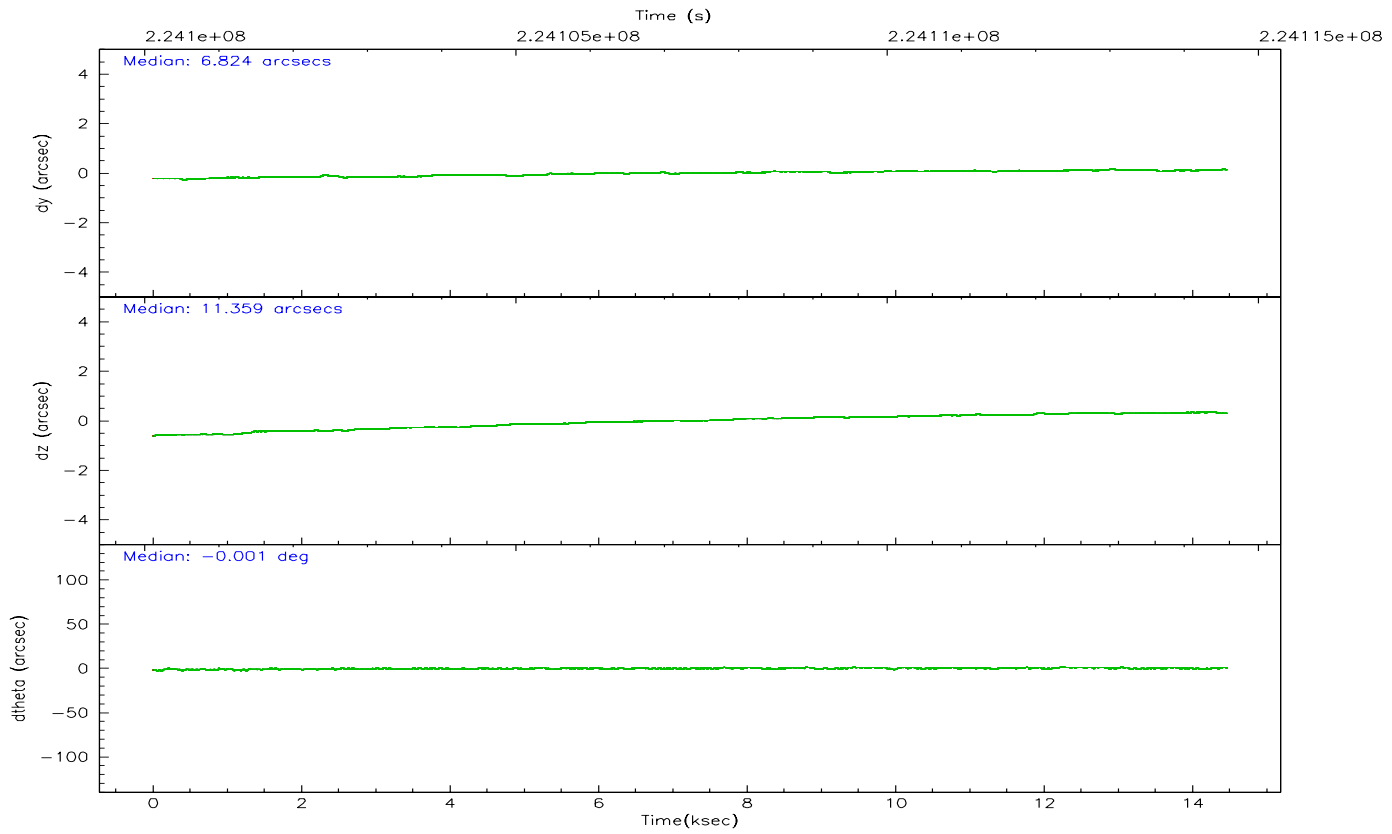
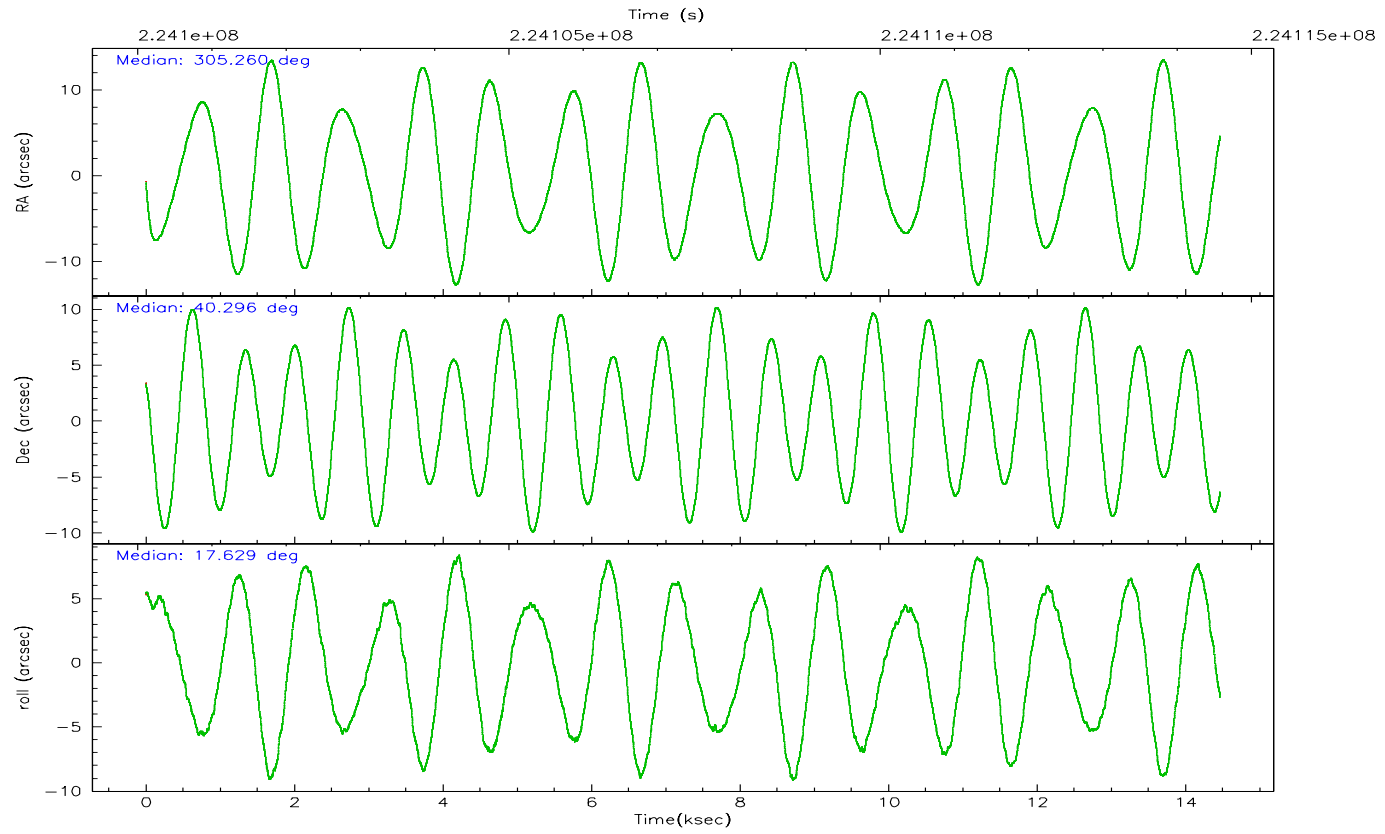
	ccd 0	ccd 1	ccd 2	ccd 3
grade 0 events	7040	6709	7056	6005
	7%	6%	6%	5%
grade 1 events	77	57	74	66
	0%	0%	0%	0%
grade 2 events	2896	3052	2669	2493
	2%	3%	2%	2%
grade 3 events	1389	1356	1196	1257
	1%	1%	1%	1%
grade 4 events	1209	1396	1258	1181
	1%	1%	1%	1%
grade 5 events	4364	4622	4112	4768
	4%	4%	3%	4%
grade 6 events	2230	2614	2122	2229
	2%	2%	2%	2%
grade 7 events	78925	78150	87269	87862
	80%	79%	82%	82%

## 2.2 Compared Parameters

Parameter	Planned	Actual	Parameter	Planned	Actual
Instrument	ACIS	ACIS	Obspar format version number	6	6
Detector	ACIS-0123	ACIS-0123	Obspar file type	PREDICTED	ACTUAL
Grating	NONE	NONE	Obspar update status	NONE	UPDATED
Data mode	VFAINT	VFAINT	On-chip summing requested	N	N
Observation mode	POINTING	POINTING	Subarray requested	NONE	NONE
Pointing RA	305.236144	305.2601565350349	Alternating exposures requested	N	N
Pointing Dec	40.275929	40.2961983386803	Primary exposure time	0.000000	3.1
Pointing Roll	17.439640	17.63279791974484			
SIM focus pos (mm)	-0.782348	-0.7809083437167272			
SIM defocus (mm)	0	0.001439871863259334			
SIM translation stage pos (mm)	-233.592463	-233.5874344608287			
SIM translation stage offset (mm)	0	-0.005018542100998502			
Observation start time	224100298.184000	224099417.43029			
Observation start date	2005-02-06T18:03:54	2005-02-06T17:50:17			
Observation end time	224114577.184000	224114818.56848			
Observation end date	2005-02-06T22:01:53	2005-02-06T22:06:58			
Read mode	TIMED	TIMED			

## 2.3 Aspect





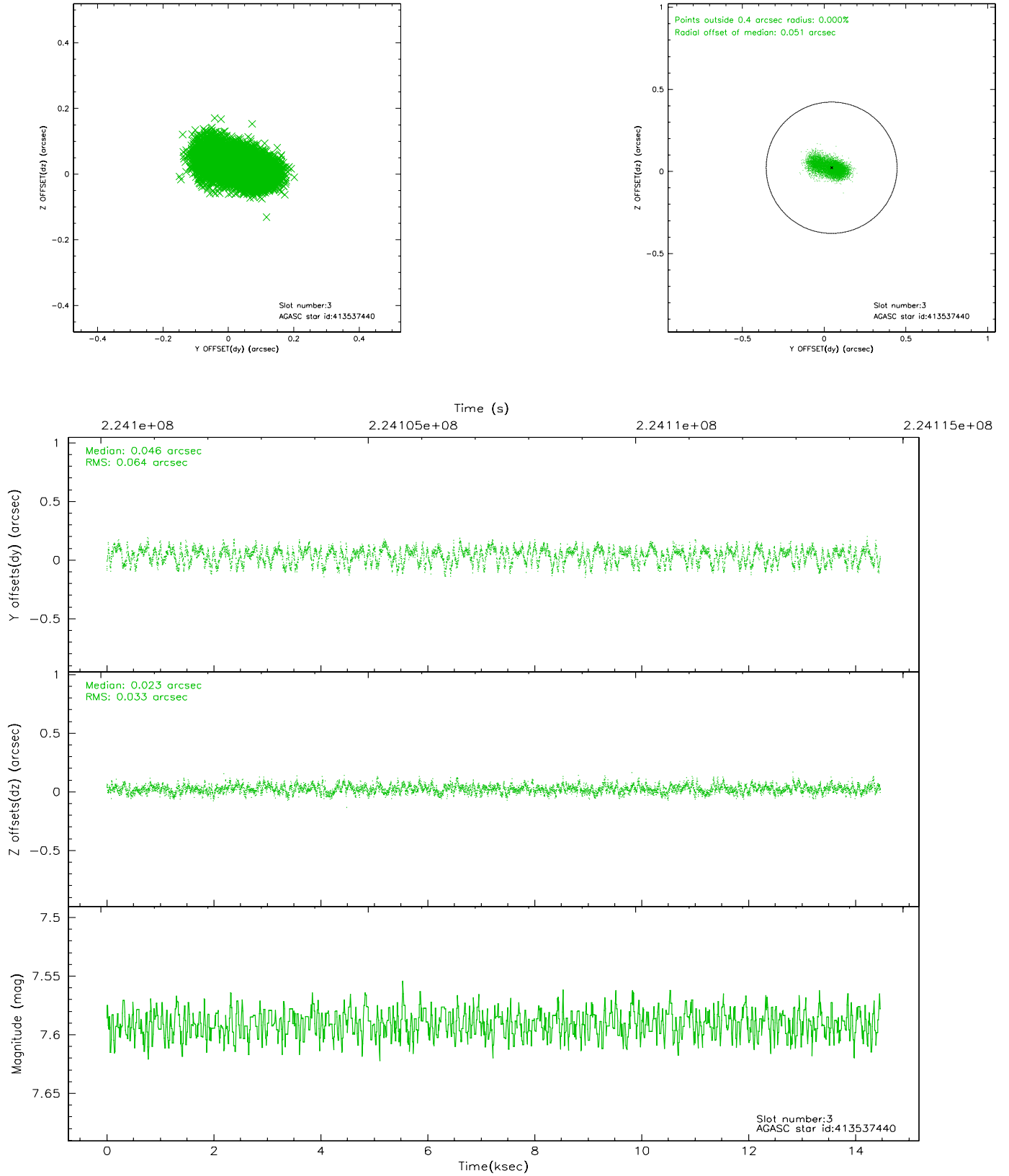
### Slot Statistics

slot	status	id	mag	n_pts	med_dy	med_dz	dr1	dr2	ra	dec	mean_y	mean_z
0	FID	ACIS-I-1	7.24	3529	0.022	0.002	0.009	0.016	0.000000	0.000000	932.88	-834.85
1	FID	ACIS-I-5	7.23	3529	-0.139	0.048	0.009	0.016	0.000000	0.000000	-1815.17	1062.58
2	FID	ACIS-I-6	7.25	3529	0.026	0.021	0.011	0.016	0.000000	0.000000	398.13	1707.38
3	GUIDE	413537440	7.59	7057	0.046	0.023	0.076	0.131	304.302199	40.591389	-2091.20	1861.59
4	GUIDE	413665176	8.94	7055	0.109	-0.034	0.081	0.130	306.182911	40.093346	2295.00	-1394.63
5	GUIDE	413676032	8.19	7057	-0.091	-0.045	0.059	0.095	305.794948	40.874960	2099.44	1606.21
6	GUIDE	413680112	8.82	7056	0.080	0.075	0.072	0.118	306.015834	40.339755	2113.53	-412.39
7	GUIDE	413549024	7.95	7053	-0.133	-0.018	0.060	0.094	304.639472	39.606765	-2298.64	-1797.13

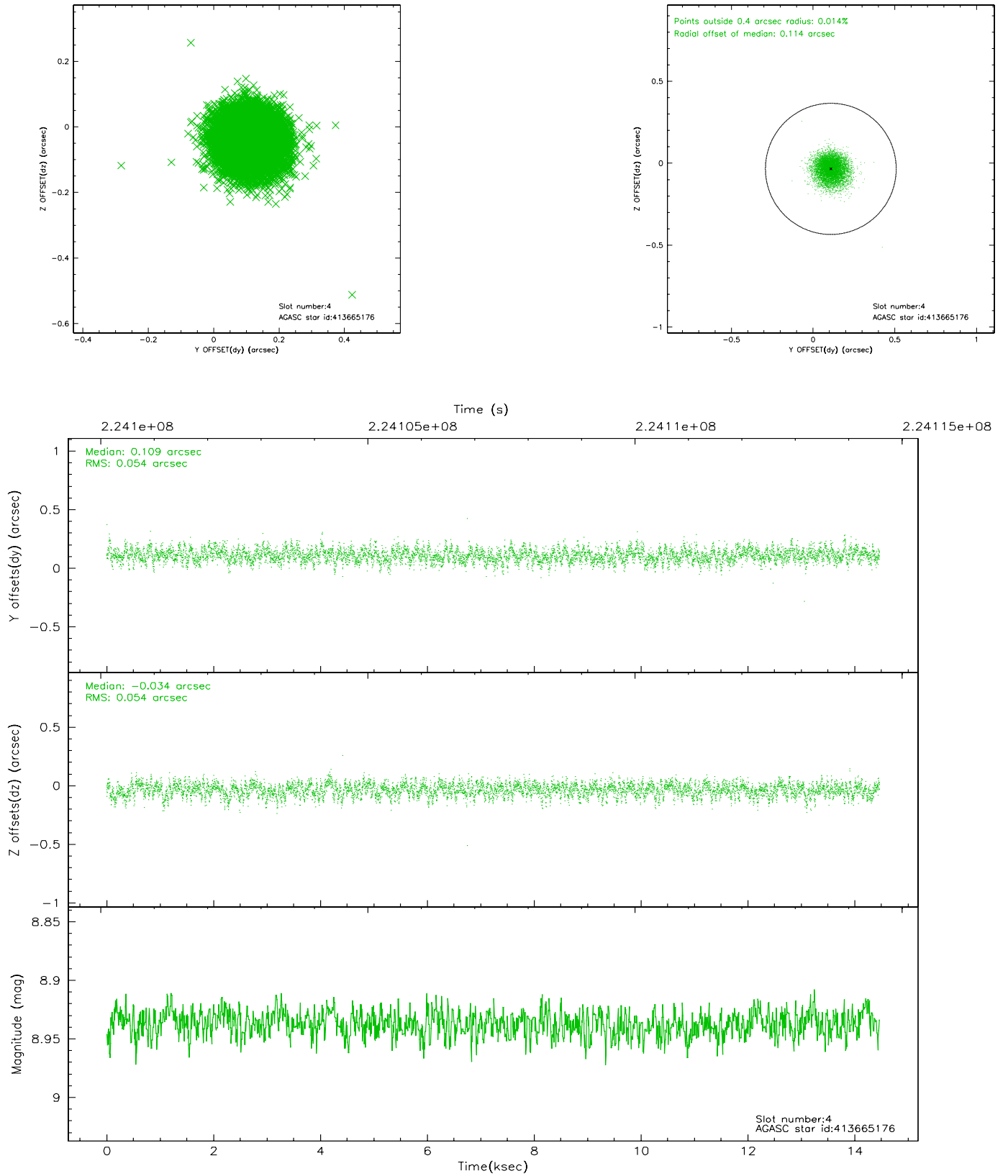


## 2.4 Star Slots

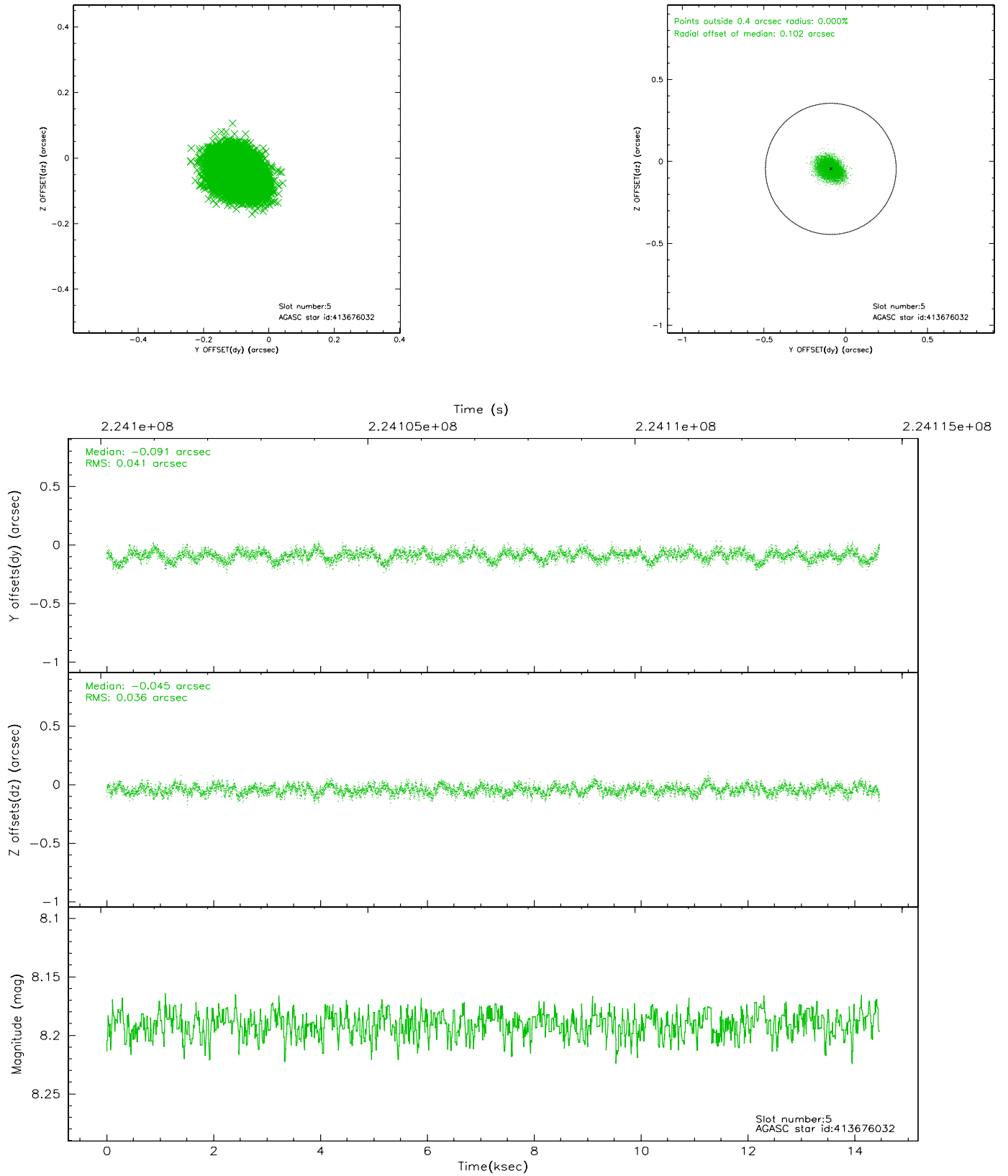
### 2.4.1 Slot 3



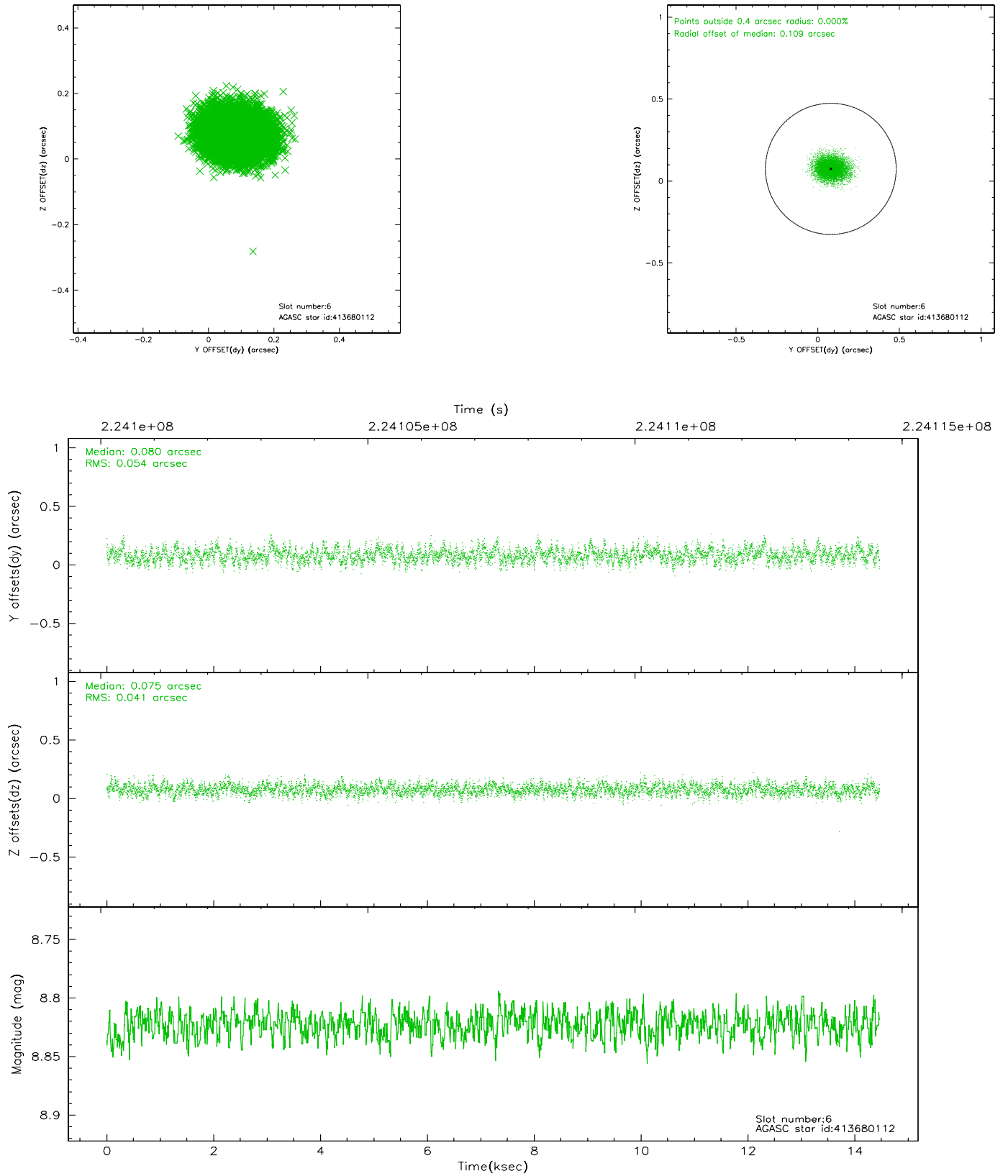
## 2.4.2 Slot 4



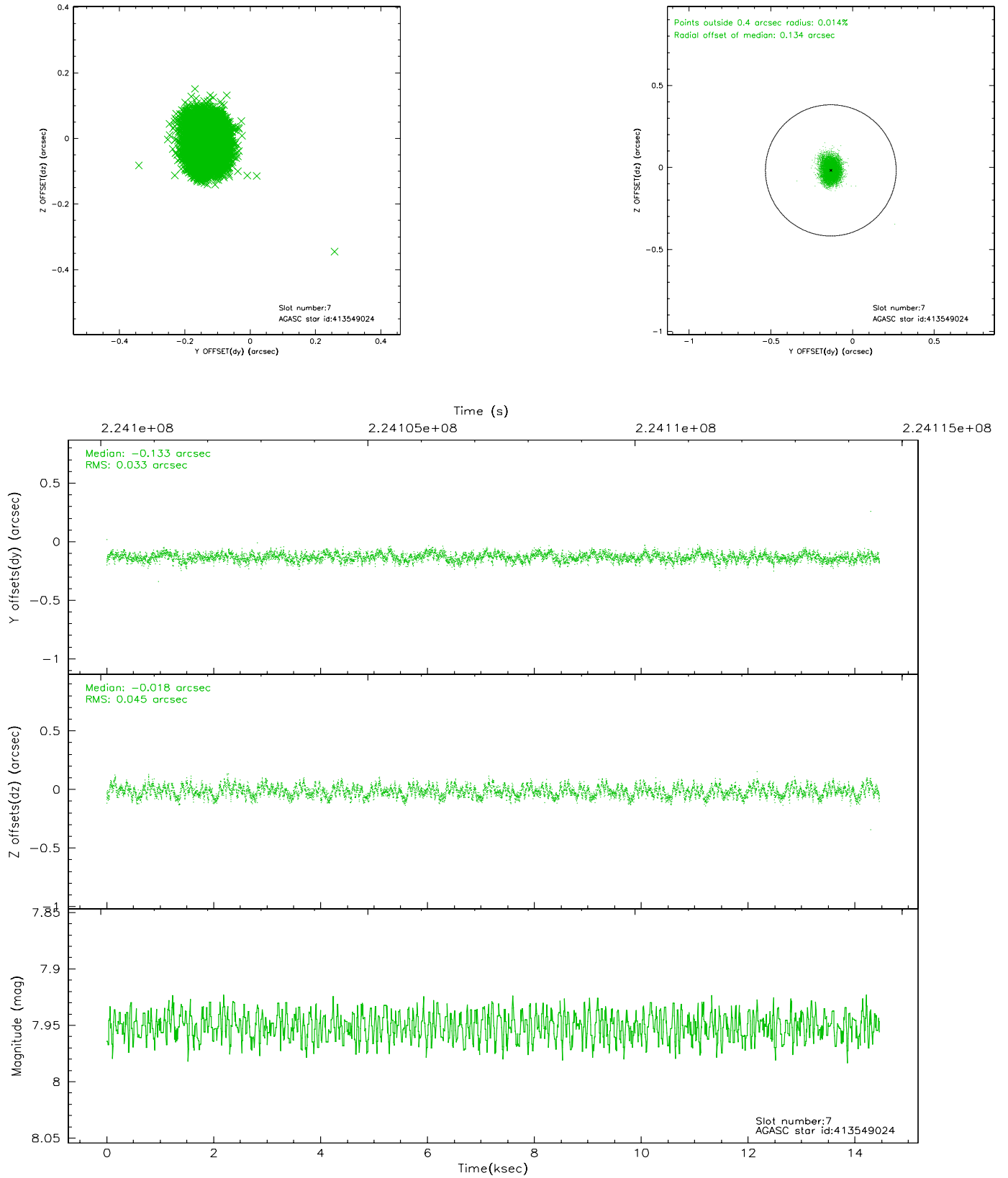
### 2.4.3 Slot 5



## 2.4.4 Slot 6

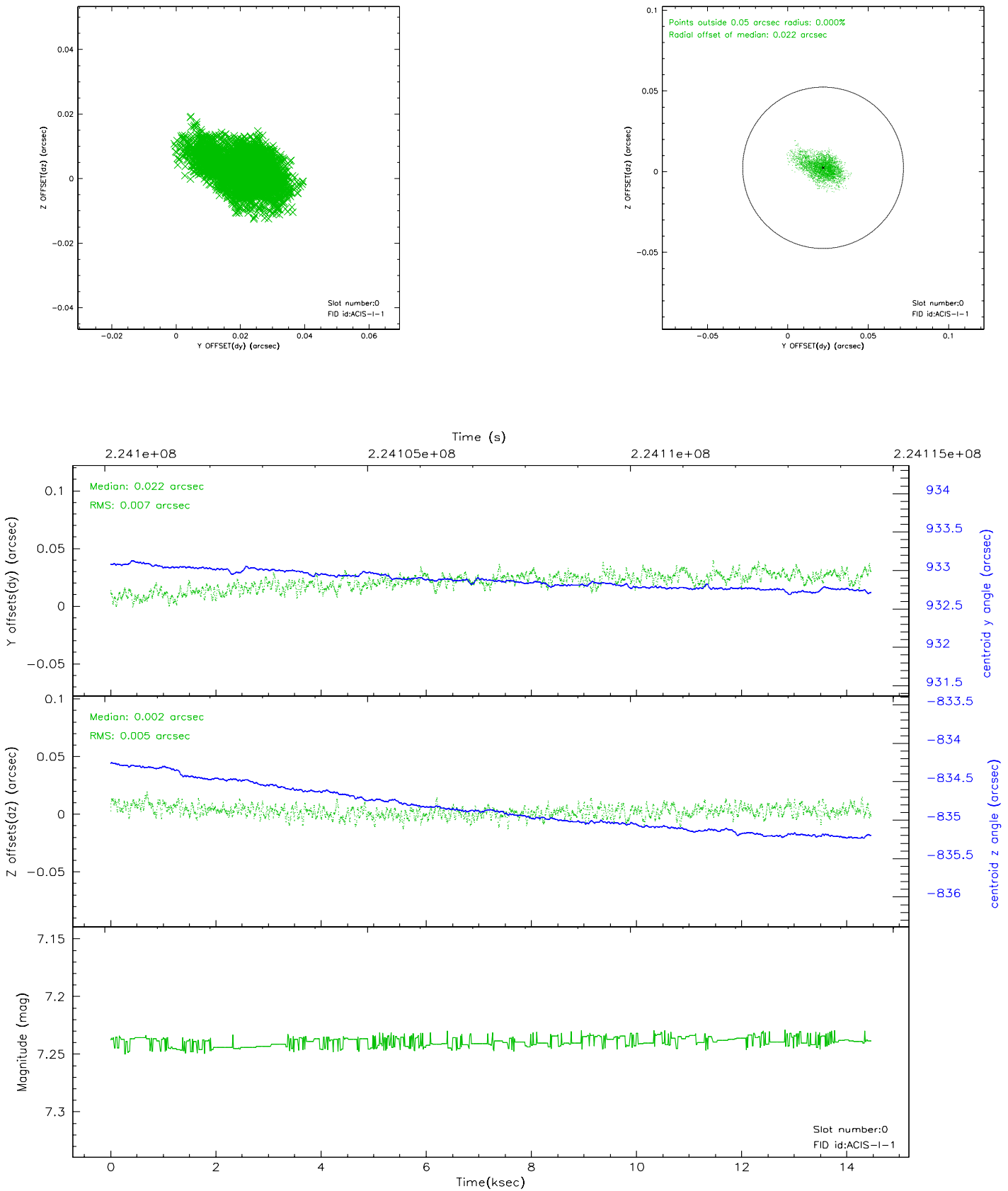


## 2.4.5 Slot 7

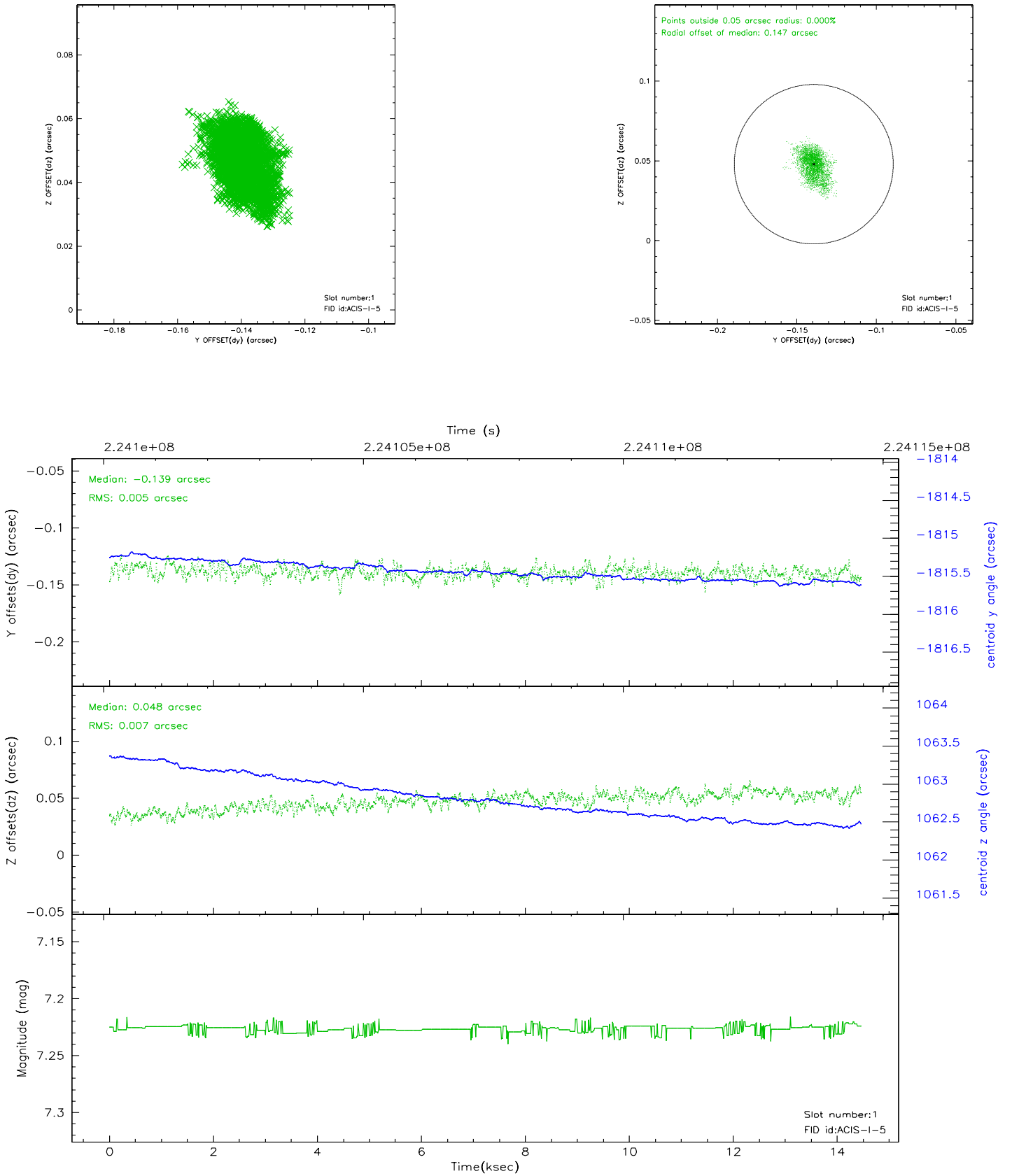


## 2.5 FID Slots

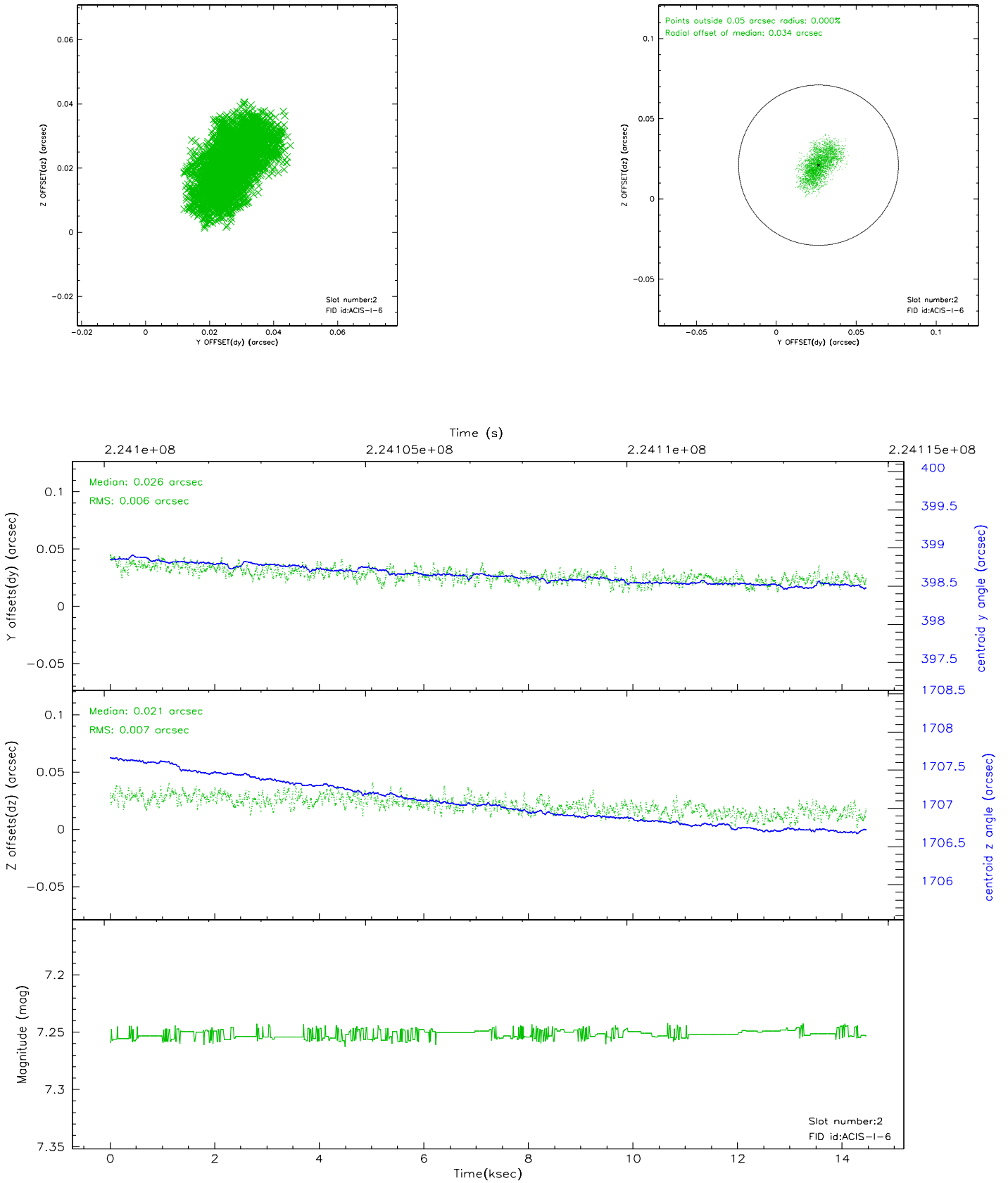
### 2.5.1 Slot 0



## 2.5.2 Slot 1

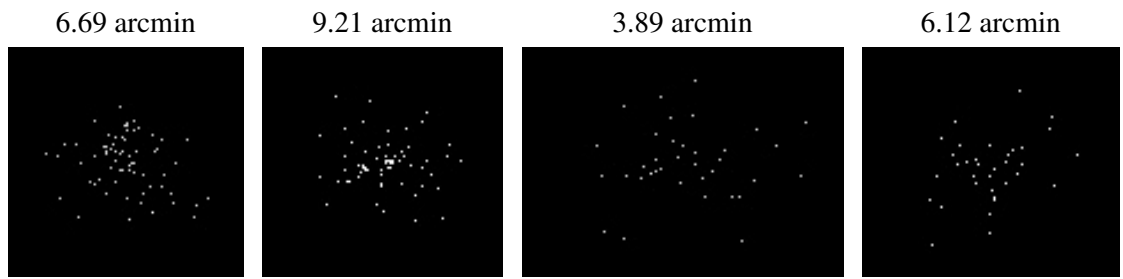


### 2.5.3 Slot 2





### 3 Point Sources



## A Summary

### A.1 Status

V&V Scientist	Beth Sundheim
V&V Date (YYYY-MM-DD)	2006.02.22
V&V Edition	1
V&V Disposition and Status	OK
V&V Charge Time	14.34989

### A.2 Comments