

V&V Reference Report

L2 ASCDS Version : 7.6.7

Observation 5531 - L2 Version 002
Chandra X-Ray Center

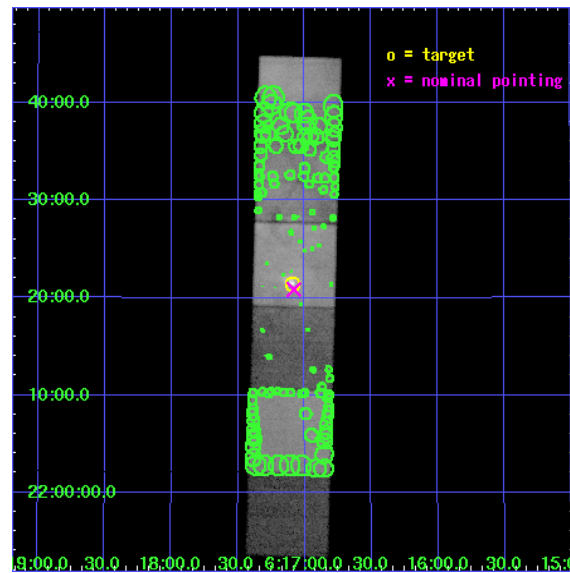
L2 Processing Date: Feb 17 2006

Contents

1	Front	2
2	OBI	3
2.1	OBI	3
2.1.1	Images	3
2.1.2	Bias	3
2.1.3	Parameters	4
2.1.4	Events	4
2.2	Compared Parameters	5
2.3	Aspect	6
2.4	Star Slots	9
2.4.1	Slot 3	9
2.4.2	Slot 4	10
2.4.3	Slot 5	11
2.4.4	Slot 6	12
2.4.5	Slot 7	13
2.5	FID Slots	14
2.5.1	Slot 0	14
2.5.2	Slot 1	15
2.5.3	Slot 2	16
3	Point Sources	17
A	Summary	18
A.1	Status	18
A.2	Comments	18

1 Front

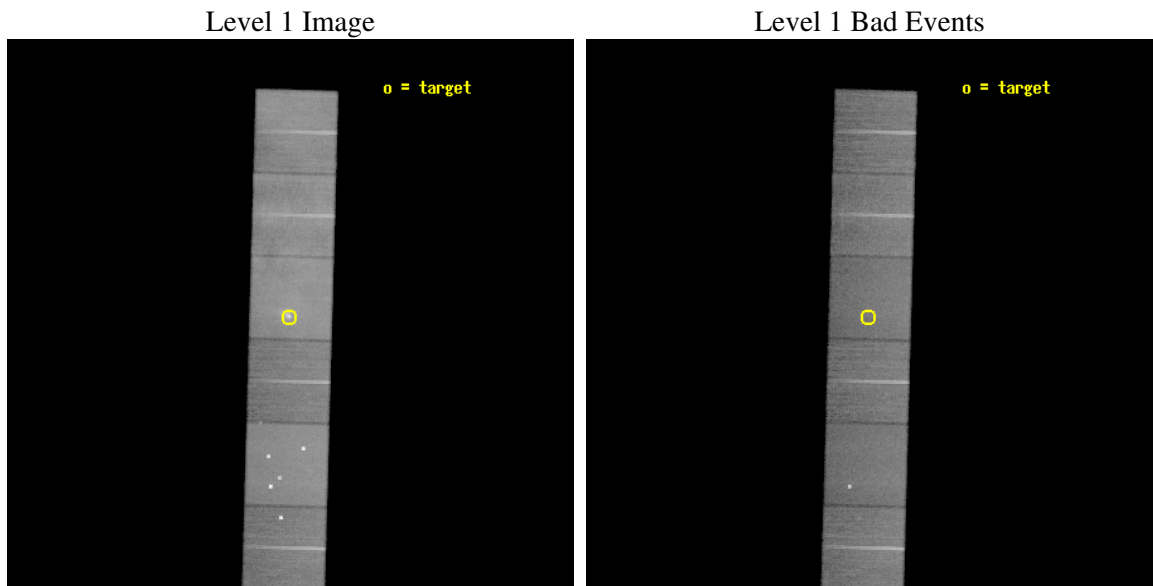
seq_num	500525
obs_id	5531
title	X-RAY IMAGING OF PULSAR BOW SHOCKS
observer	PROF Bryan Gaensler
object	CXOU J061705.3+222127
dtcycle	0
cycle	P
ra_targ	94.271667
dec_targ	22.357417
ra_nom	94.270125284057
dec_nom	22.347867768465
roll_nom	271.54854586367
revision	2
ontime	37951.999858618
livetime	37471.428784457
ontime4	37951.999858618
ontime5	37951.999858618
ontime6	37951.999858618
ontime7	37951.999858618
ontime8	37951.999858618
ontime9	37951.999858618
l2events	902539



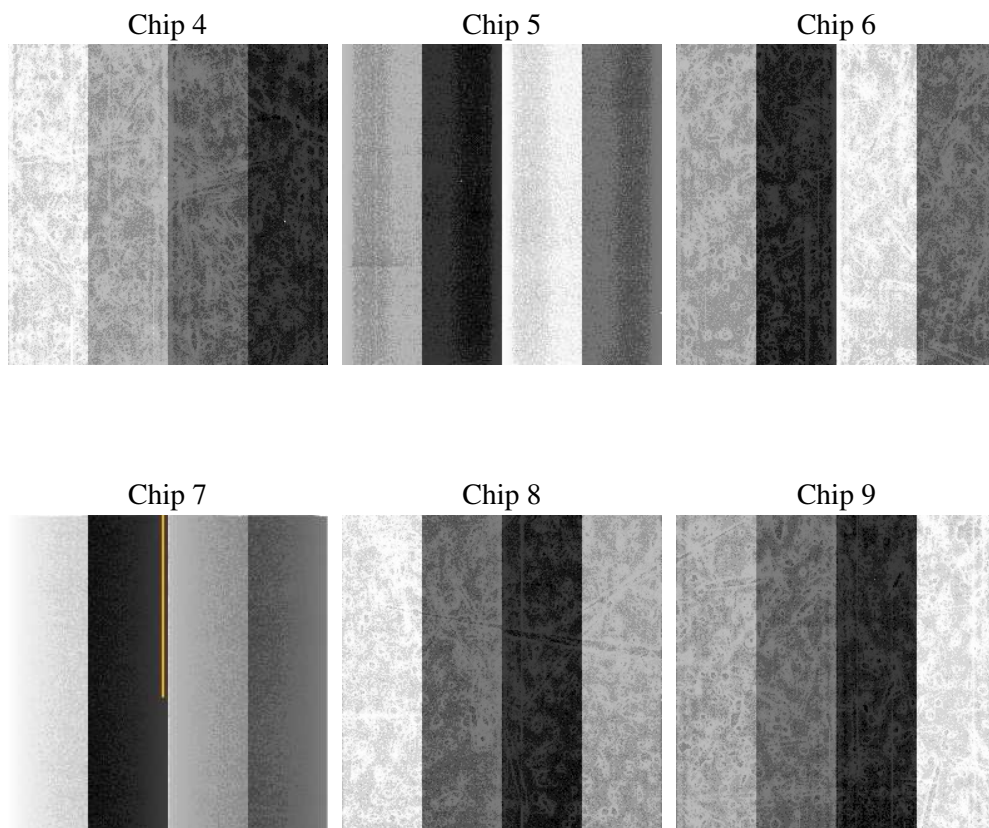
2 OBI

2.1 OBI

2.1.1 Images



2.1.2 Bias



2.1.3 Parameters

obi_num	0
ascdsver	7.6.7
caldsver	3.2.1
date	2006-02-17T04:39:44
revision	2

sched_exp_time	38000.000000
ontime	37958.733431965
ontime4	37958.733422071
ontime5	37958.733431965
ontime6	37958.733422071
ontime7	37958.733431965
ontime8	37961.974462062
ontime9	37961.974462062
l1events	2550596

2.1.4 Events

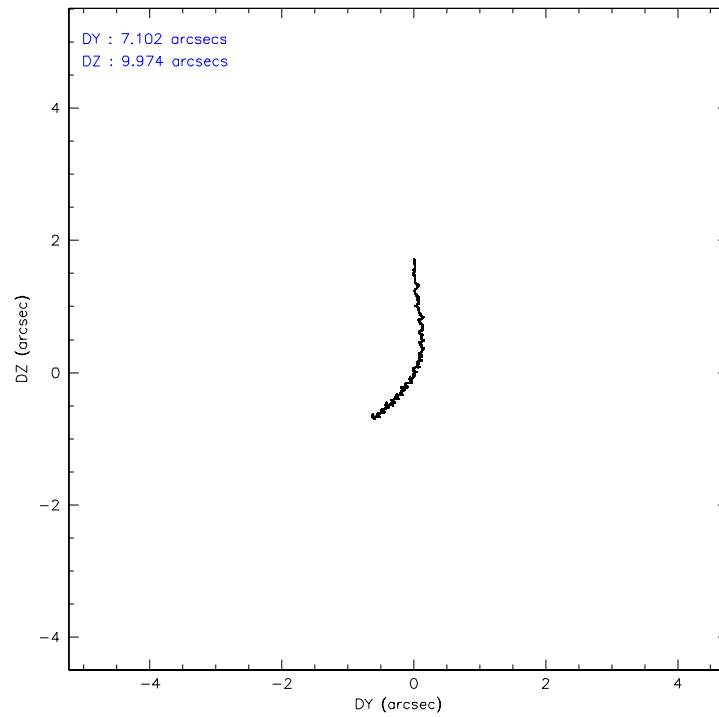
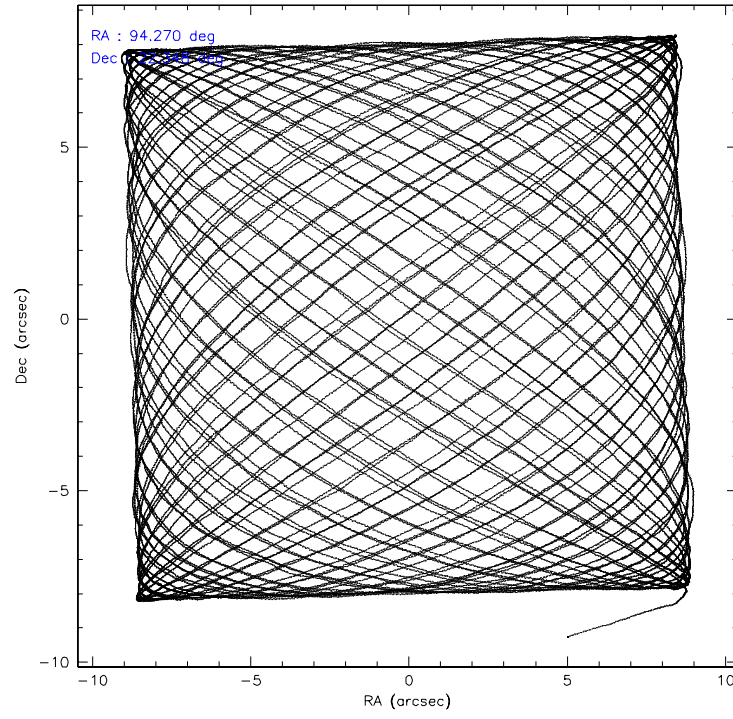
	ccd 4	ccd 5	ccd 6	ccd 7	ccd 8	ccd 9
level 1 events	319300	455397	316834	515941	482494	460630
rejected events	272079	234843	252442	235999	279110	251522
rejected %	85%	51%	79%	45%	57%	54%

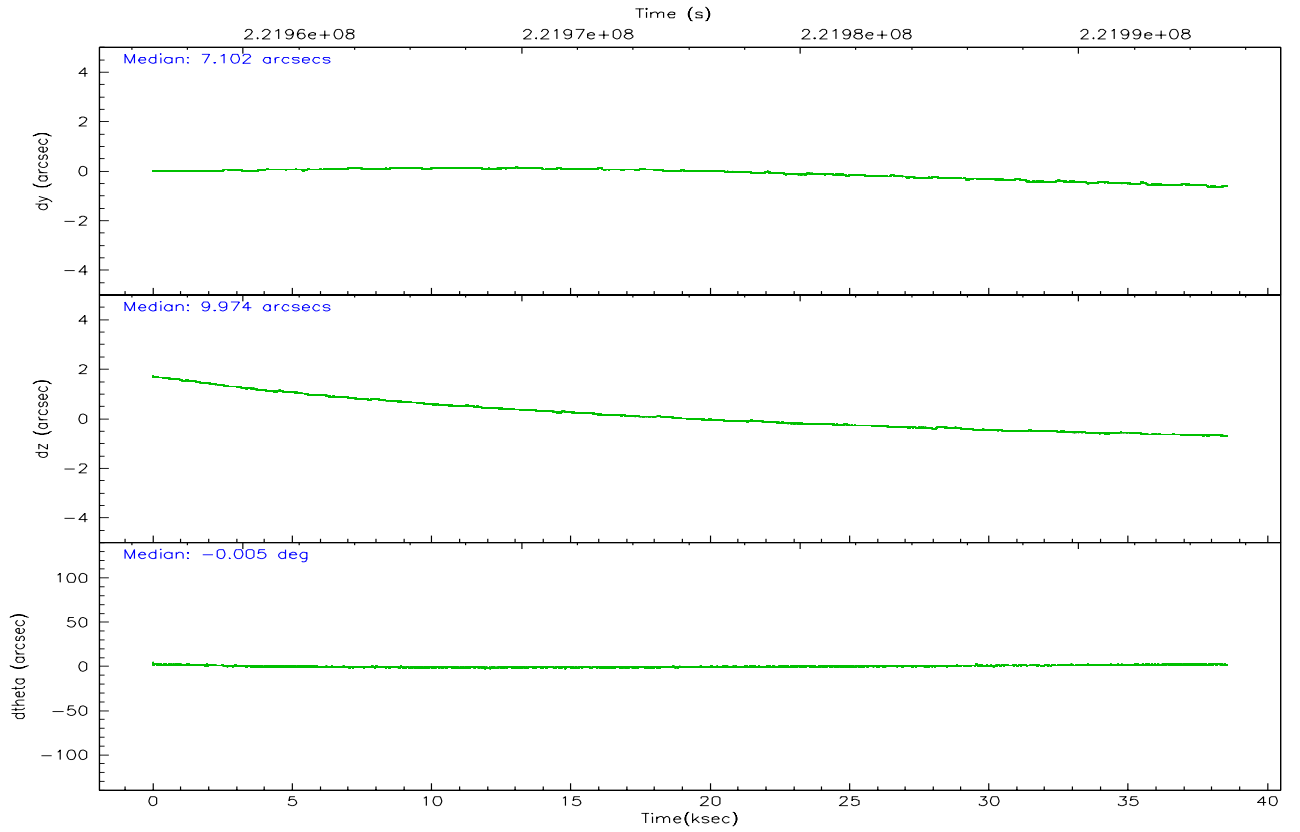
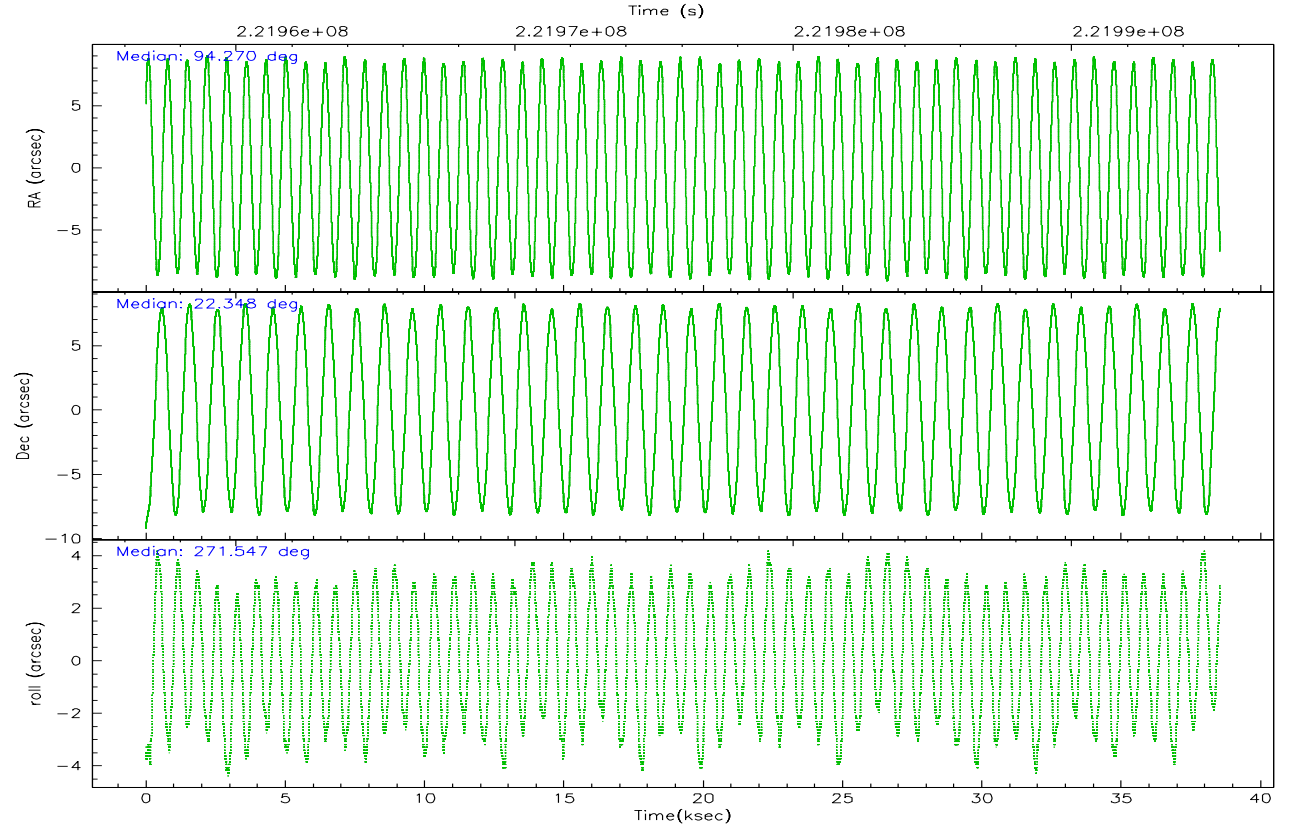
	ccd 4	ccd 5	ccd 6	ccd 7	ccd 8	ccd 9
grade 0 events	27278	32722	39704	43645	133717	164494
	8%	7%	12%	8%	27%	35%
grade 1 events	331	391	268	259	677	805
	0%	0%	0%	0%	0%	0%
grade 2 events	7544	68722	9718	75180	27703	21311
	2%	15%	3%	14%	5%	4%
grade 3 events	3555	5391	3990	22460	10741	7612
	1%	1%	1%	4%	2%	1%
grade 4 events	3450	5331	3820	21764	10390	7214
	1%	1%	1%	4%	2%	1%
grade 5 events	12521	20615	13203	25766	16930	14227
	3%	4%	4%	4%	3%	3%
grade 6 events	5399	108439	7180	116938	20879	8549
	1%	23%	2%	22%	4%	1%
grade 7 events	259222	213786	238951	209929	261457	236418
	81%	46%	75%	40%	54%	51%

2.2 Compared Parameters

Parameter	Planned	Actual	Parameter	Planned	Actual
Instrument	ACIS	ACIS	Obspar format version number	6	6
Detector	ACIS-456789	ACIS-456789	Obspar file type	PREDICTED	ACTUAL
Grating	NONE	NONE	Obspar update status	NONE	UPDATED
Data mode	FAINT	FAINT	On-chip summing requested	N	N
Observation mode	POINTING	POINTING	Subarray requested	NONE	NONE
Pointing RA	94.254362	94.27012528405717	Alternating exposures requested	N	N
Pointing Dec	22.370866	22.34786776846482	Primary exposure time	0.000000	3.2
Pointing Roll	271.397910	271.548545863673			
SIM focus pos (mm)	-0.684267	-0.6828225247311905			
SIM defocus (mm)	0	0.001444936568705701			
SIM translation stage pos (mm)	-190.132523	-190.1425803651734			
SIM translation stage offset (mm)	0	0.01005778216563158			
Observation start time	221957324.184000	221956177.69599			
Observation start date	2005-01-12T22:47:40	2005-01-12T22:29:37			
Observation end time	221995324.184000	221996645.21032			
Observation end date	2005-01-13T09:21:00	2005-01-13T09:44:05			
Read mode	TIMED	TIMED			

2.3 Aspect



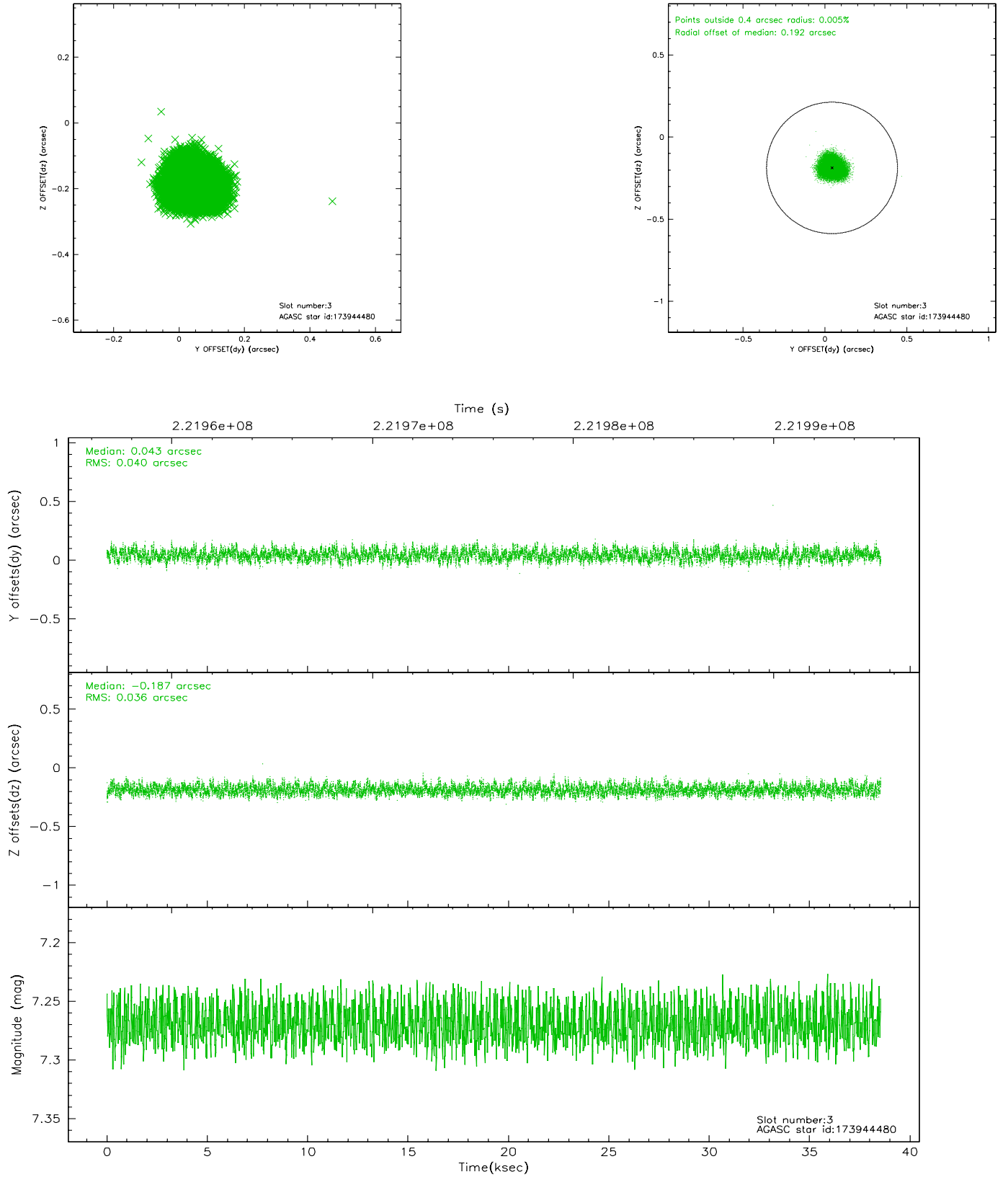


Slot Statistics

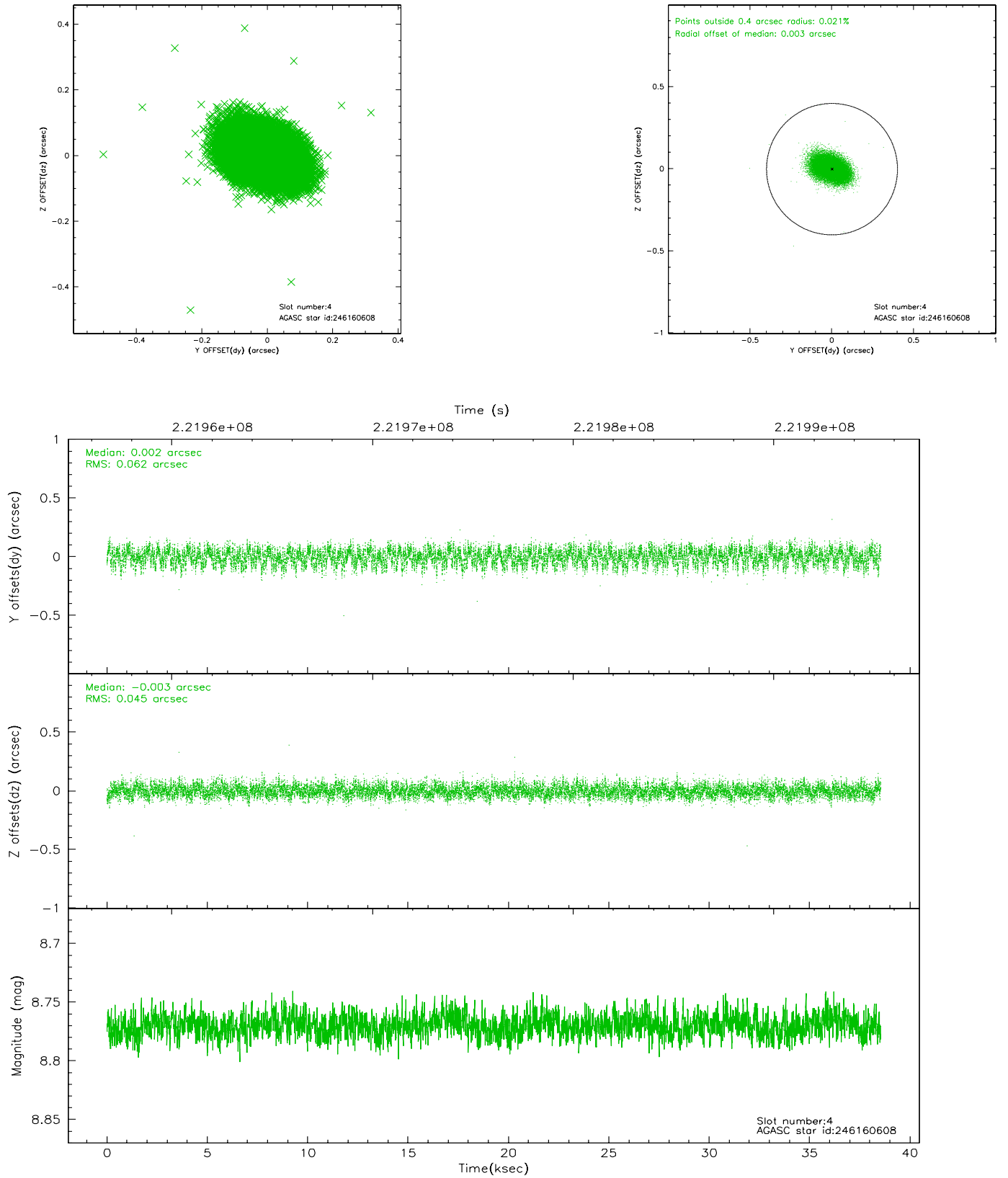
slot	status	id	mag	n_pts	med_dy	med_dz	dr1	dr2	ra	dec	mean_y	mean_z
0	FID	ACIS-S-2	7.10	9403	-0.042	-0.006	0.013	0.022	0.000000	0.000000	-759.75	-1731.35
1	FID	ACIS-S-4	7.21	9401	0.047	0.022	0.008	0.027	0.000000	0.000000	2153.56	177.18
2	FID	ACIS-S-5	7.23	9402	-0.035	-0.007	0.009	0.014	0.000000	0.000000	-1812.60	170.78
3	GUIDE	173944480	7.27	18803	0.043	-0.187	0.058	0.091	94.334818	22.143978	823.05	248.39
4	GUIDE	246160608	8.77	18799	0.002	-0.003	0.081	0.130	94.789542	22.968548	-2111.00	1826.25
5	GUIDE	246161944	8.73	18805	0.003	0.074	0.075	0.118	94.664308	23.007934	-2261.69	1414.45
6	GUIDE	173945656	8.66	18800	0.050	0.079	0.081	0.129	94.033171	21.698501	2401.40	-797.95
7	GUIDE	246160408	8.11	18807	-0.098	0.032	0.066	0.111	94.748784	23.001135	-2231.13	1693.63

2.4 Star Slots

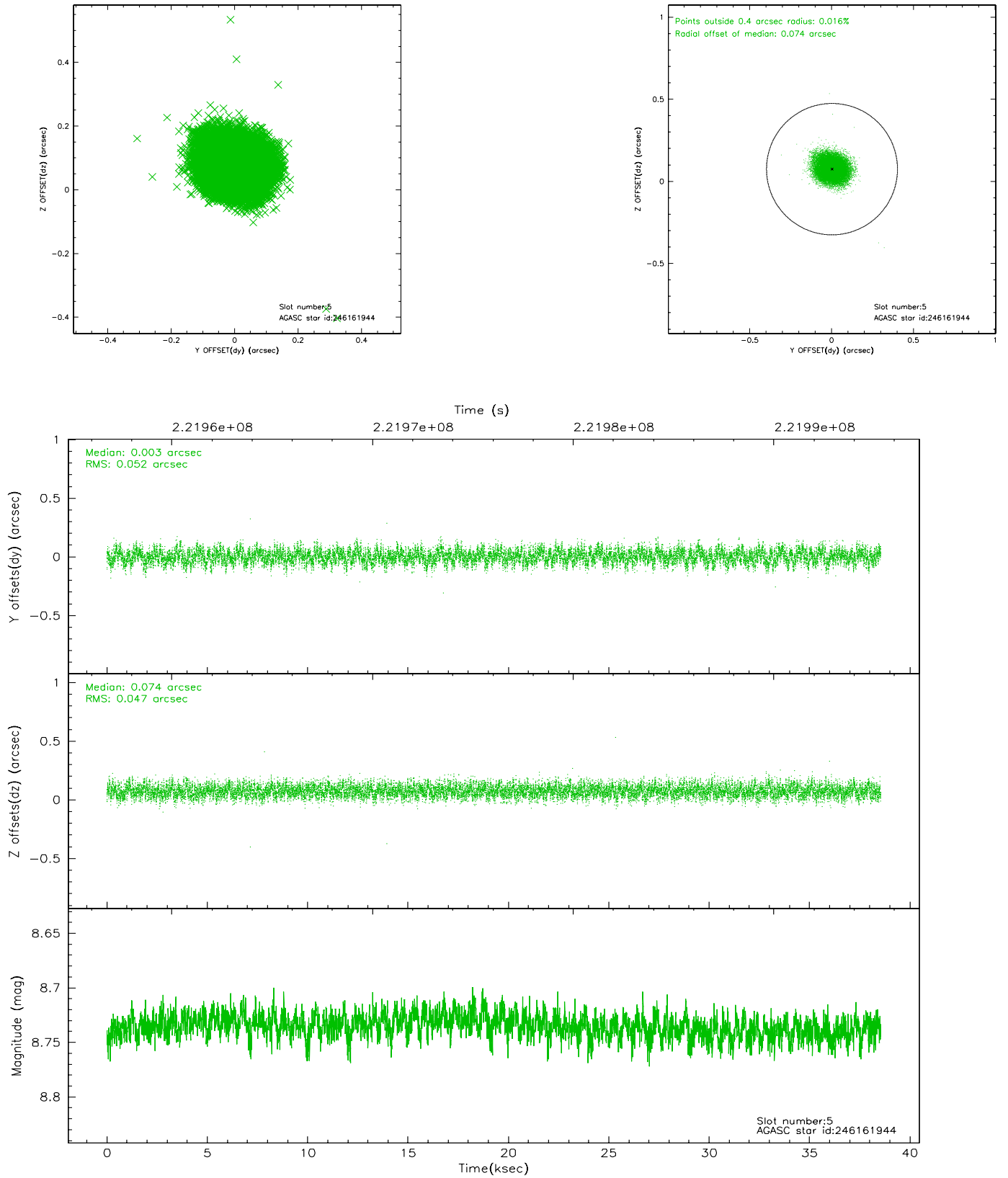
2.4.1 Slot 3



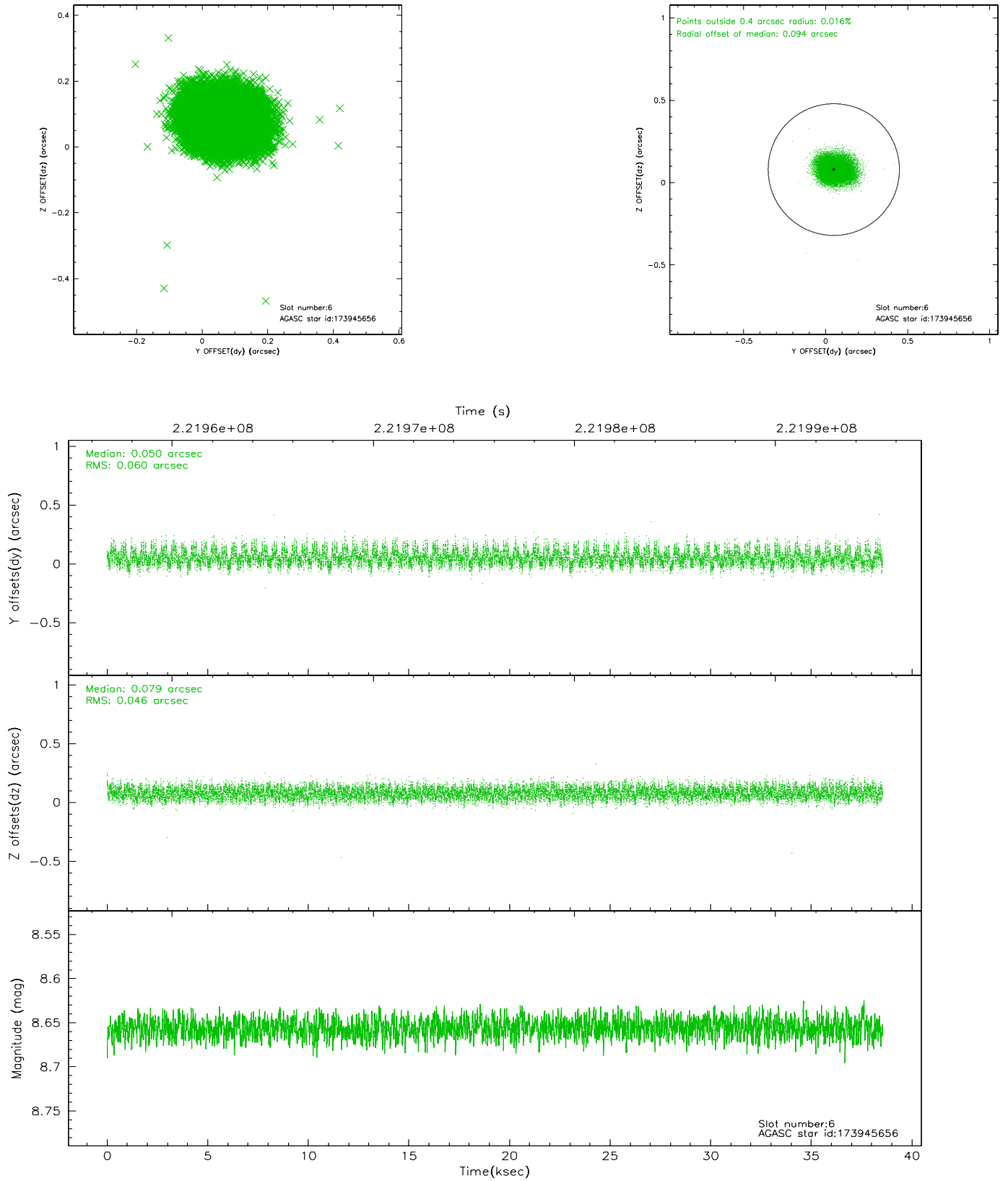
2.4.2 Slot 4



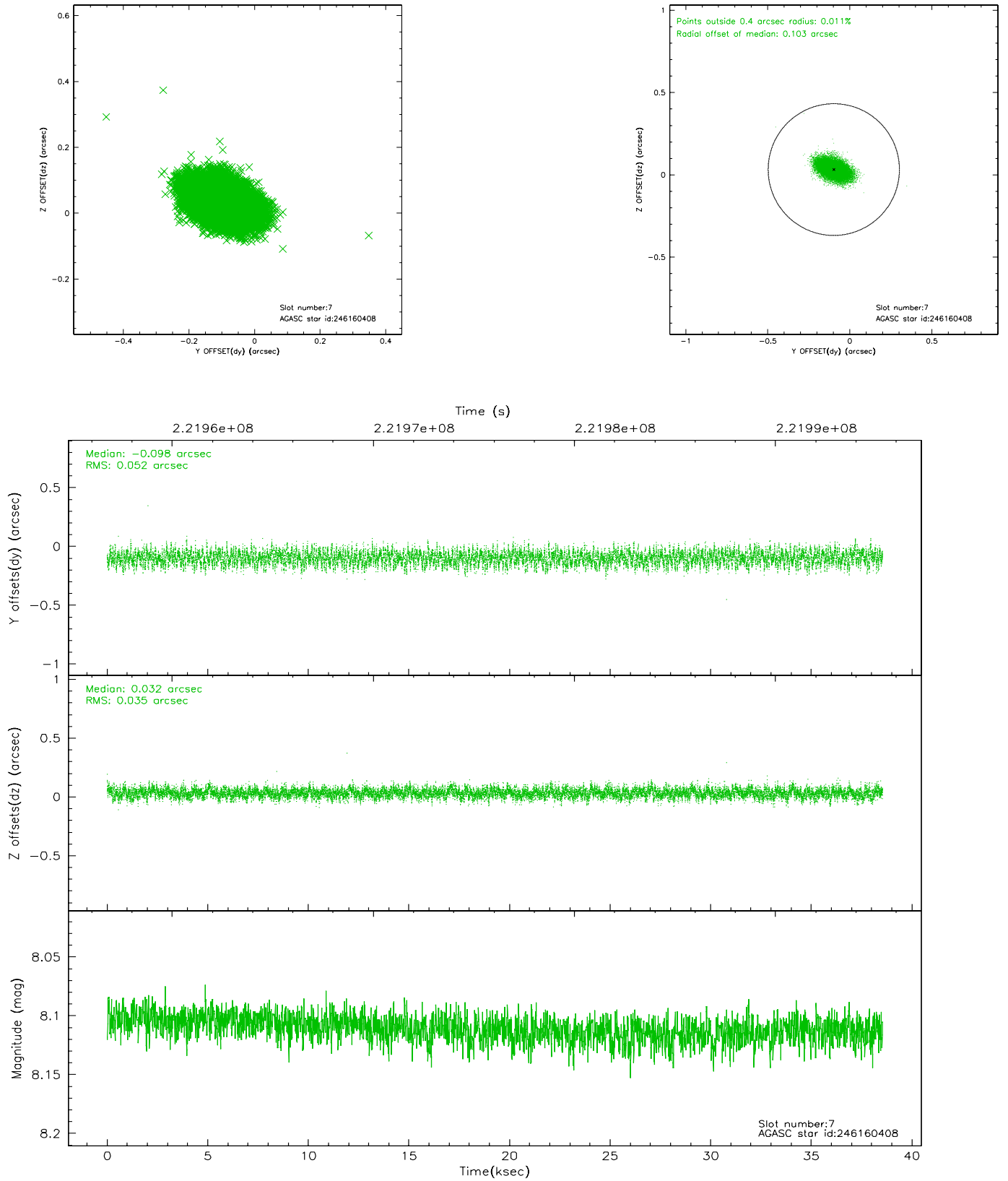
2.4.3 Slot 5



2.4.4 Slot 6

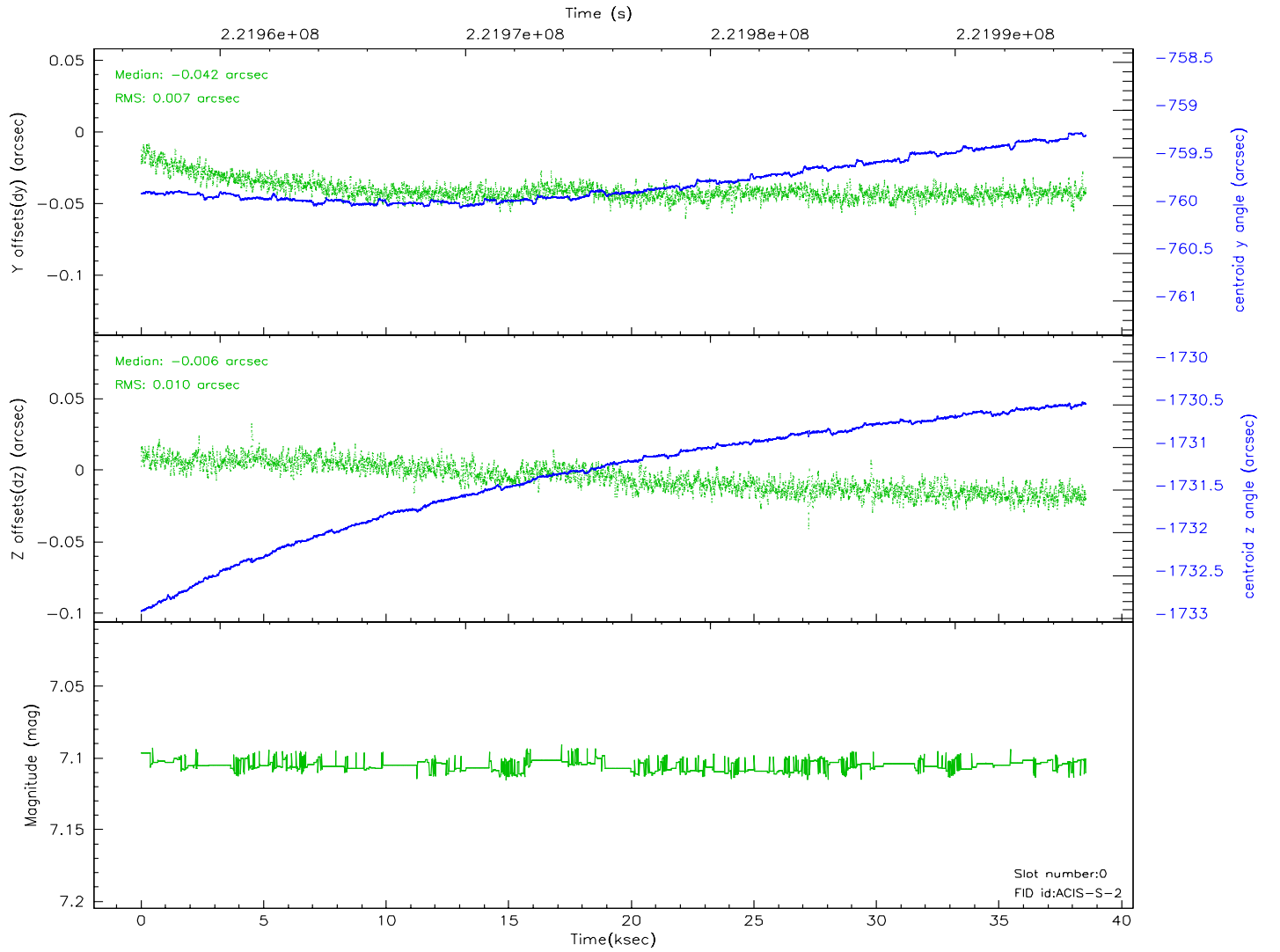
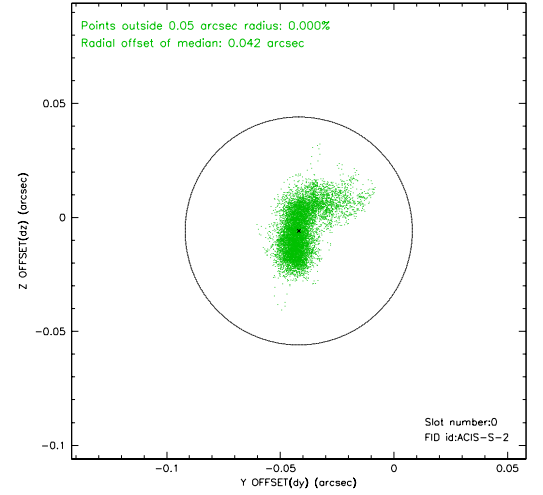
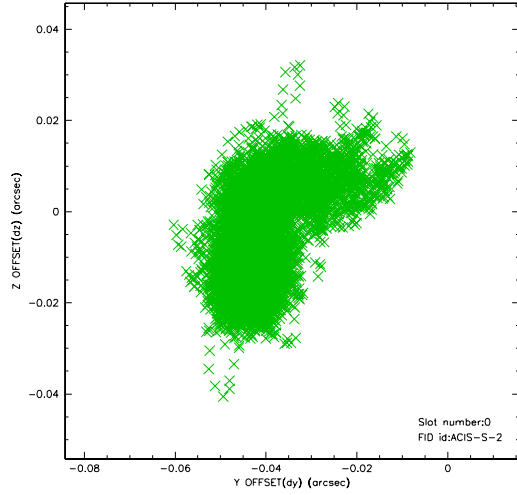


2.4.5 Slot 7

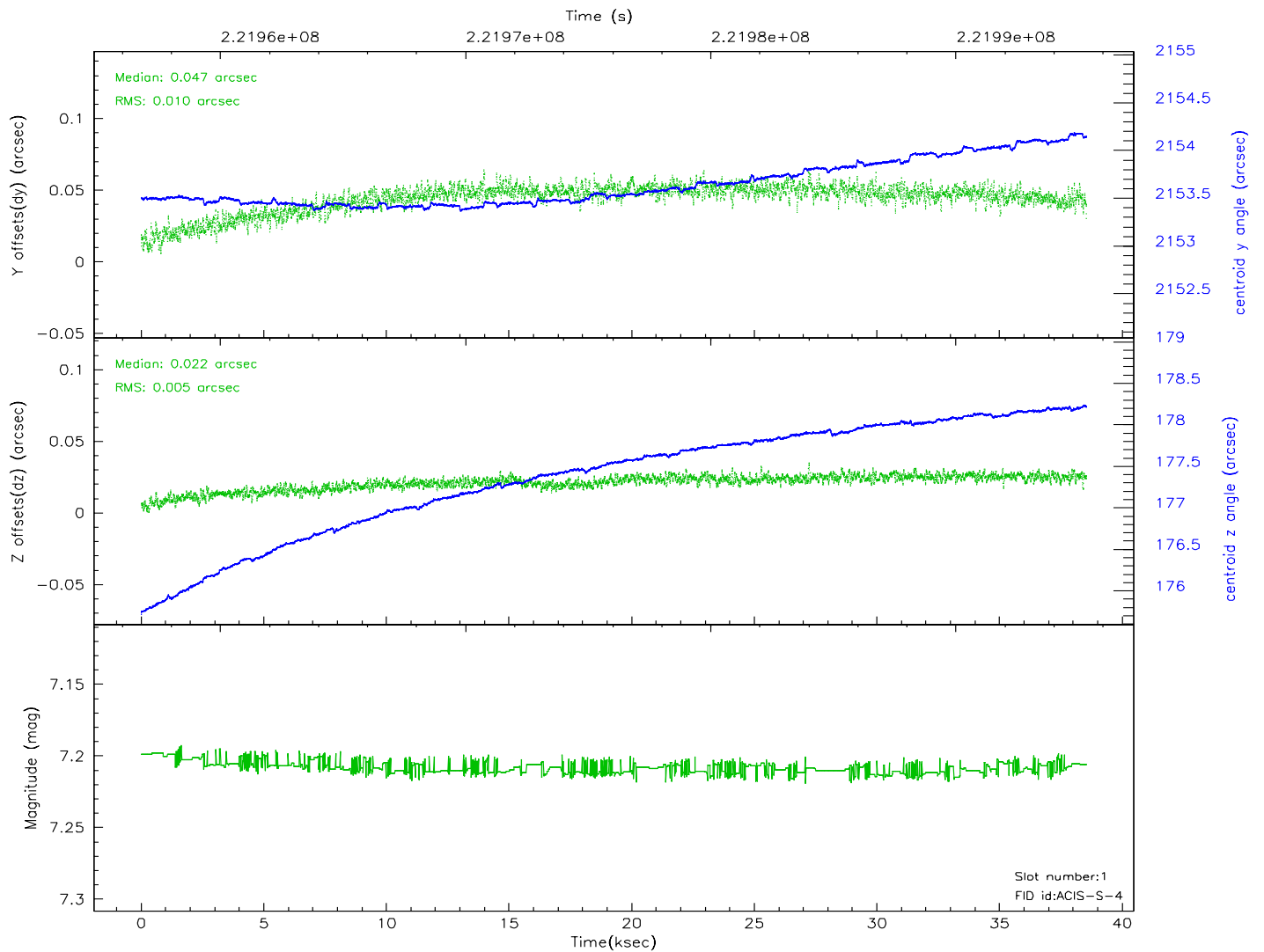
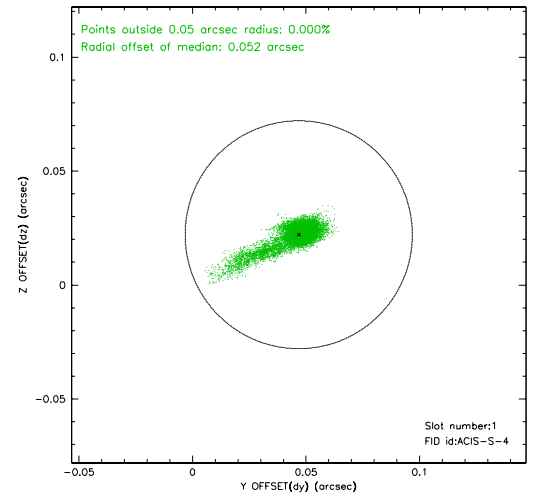
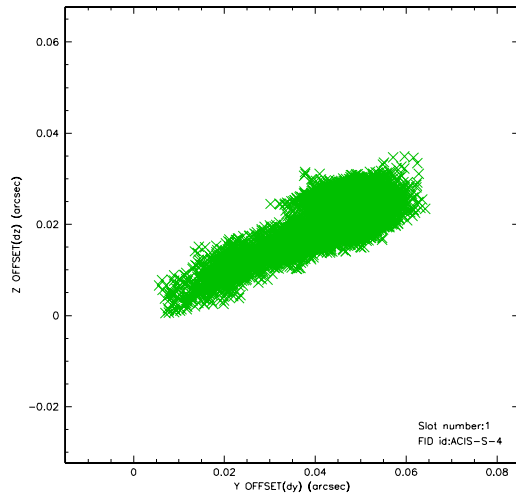


2.5 FID Slots

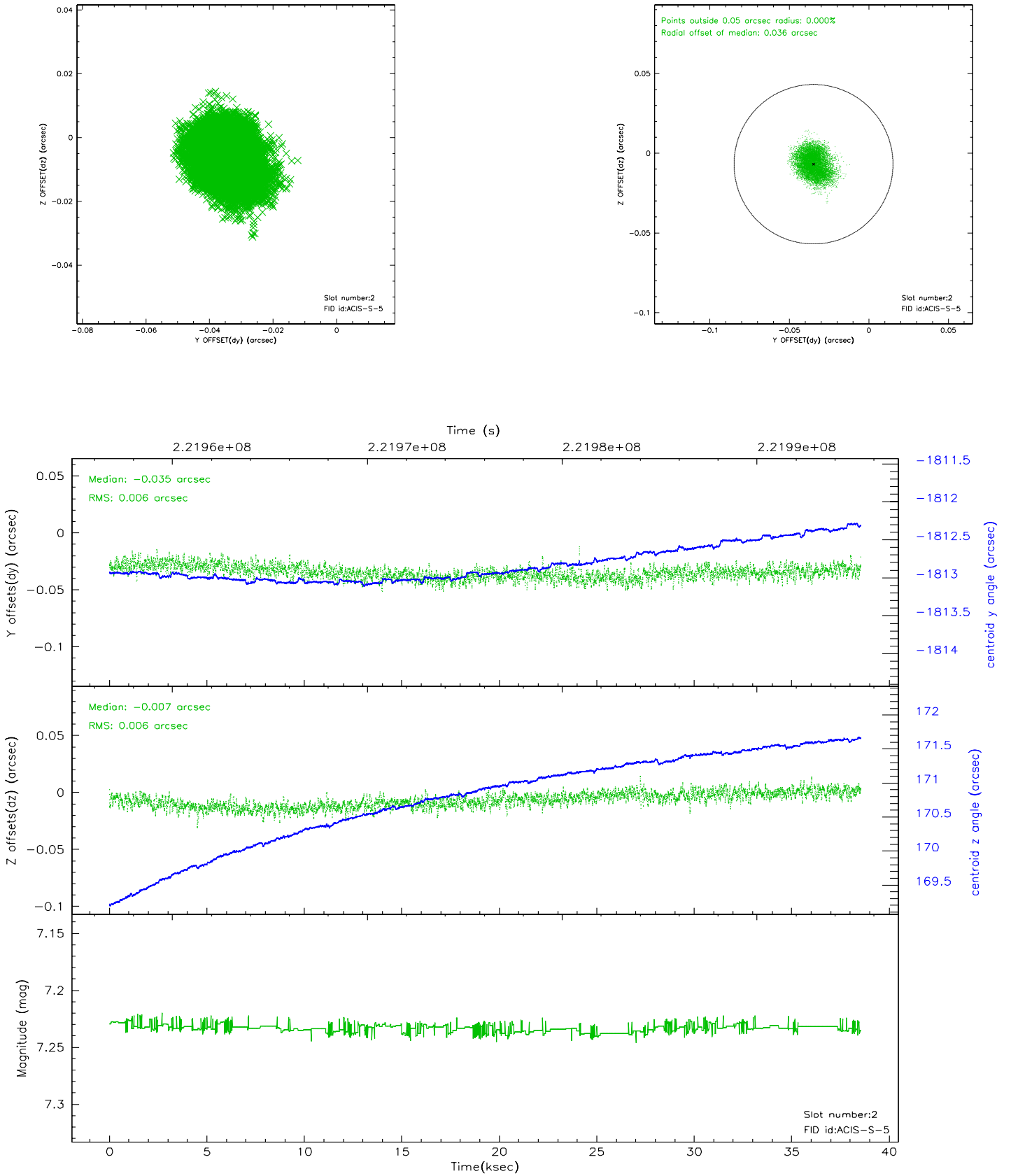
2.5.1 Slot 0



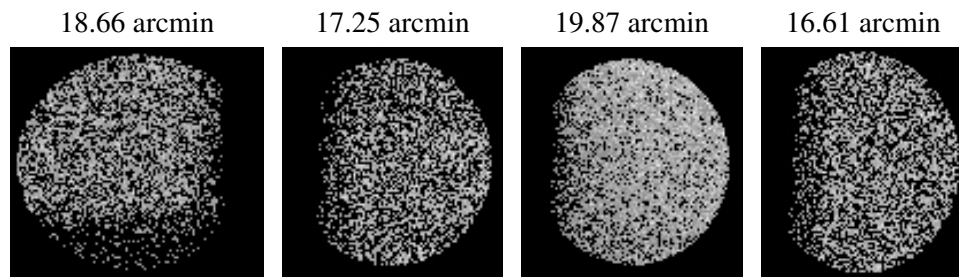
2.5.2 Slot 1



2.5.3 Slot 2



3 Point Sources



A Summary

A.1 Status

V&V Scientist	Beth Sundheim
V&V Date (YYYY-MM-DD)	2006.02.17
V&V Edition	1
V&V Disposition and Status	OK
V&V Charge Time	37.95199

A.2 Comments

Charge time:

Using existing charge time of 37.95199.