

V&V Reference Report

L2 ASCDS Version : 7.6.8.1

Observation 5524 - L2 Version 003
Chandra X-Ray Center

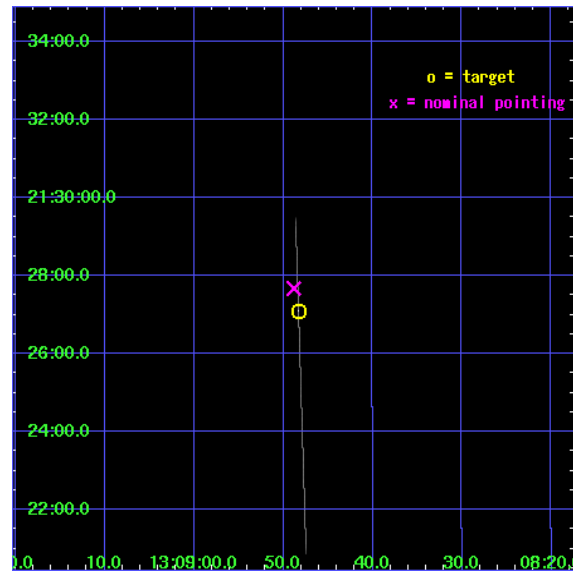
L2 Processing Date : Sep 11 2006

Contents

1	Front	2
2	OBI	3
2.1	OBI	3
2.1.1	Images	3
2.1.2	Bias	3
2.1.3	Parameters	4
2.1.4	Events	4
2.2	Compared Parameters	5
2.3	Aspect	6
2.4	Star Slots	9
2.4.1	Slot 3	9
2.4.2	Slot 4	10
2.4.3	Slot 5	11
2.4.4	Slot 6	12
2.4.5	Slot 7	13
2.5	FID Slots	14
2.5.1	Slot 0	14
2.5.2	Slot 1	15
2.5.3	Slot 2	16
A	Summary	17
A.1	Status	17
A.2	Comments	17

1 Front

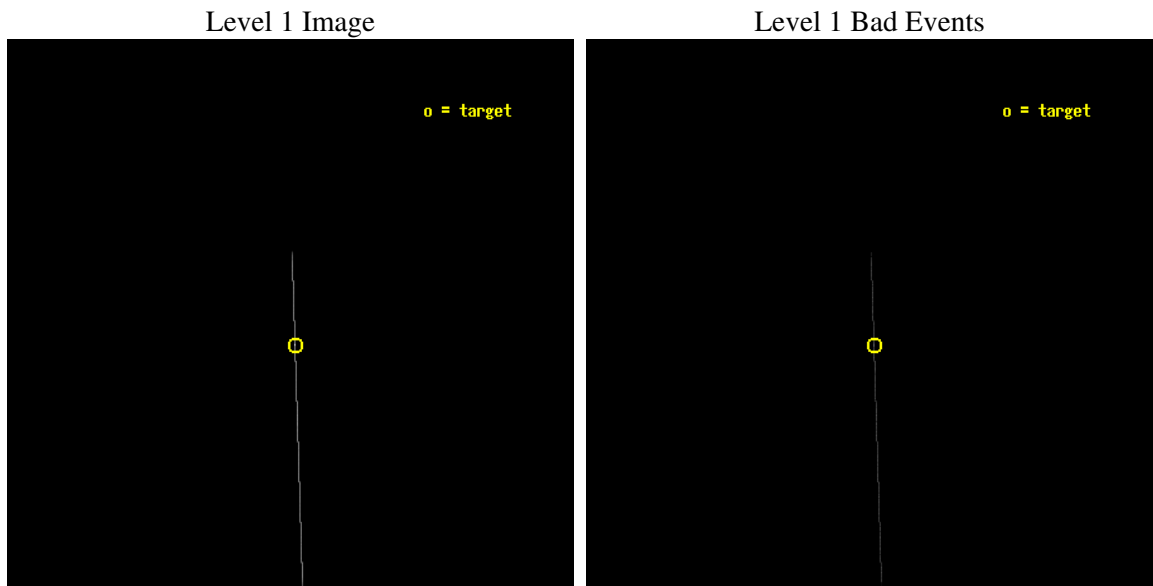
seq_num	500518
obs_id	5524
title	Timing the Enigmatic Nearby Neutron Star RX J1308.8+2127
observer	Dr David Kaplan
object	RX J1308.8+2127
ra_targ	197.20125
dec_targ	21.451889
ra_nom	197.20343130137
dec_nom	21.461280622206
roll_nom	88.155888849461
revision	3
ontime	5161.5
livetime	5141.337890625
ontime7	5161.5
l2events	22363



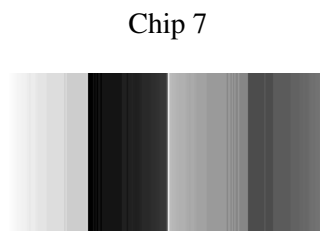
2 OBI

2.1 OBI

2.1.1 Images



2.1.2 Bias



2.1.3 Parameters

obi_num	0
ascdsver	7.6.8.1
caldbver	3.2.3
date	2006-09-11T19:15:52
revision	3

sched_exp_time	5000.000000
ontime	5277.9133055508
ontime7	5277.9133055508
l1events	27322

2.1.4 Events

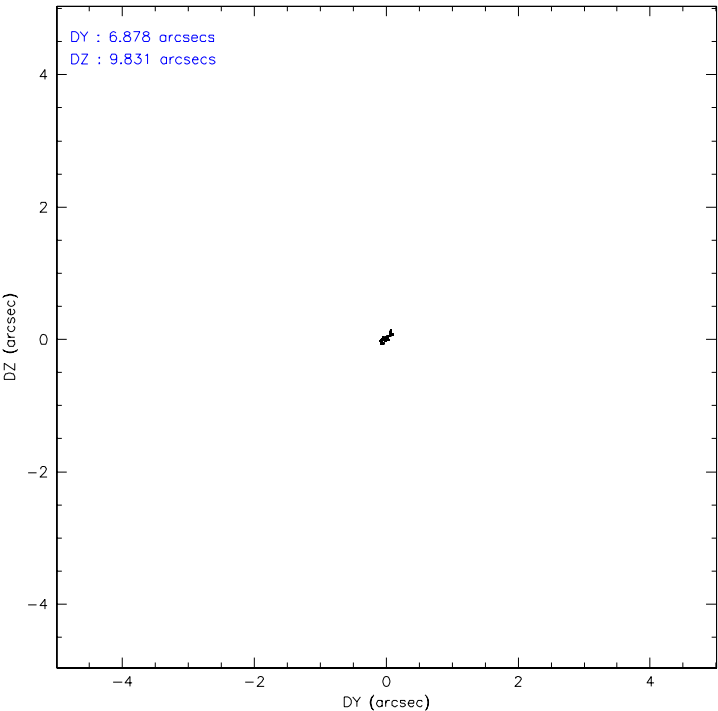
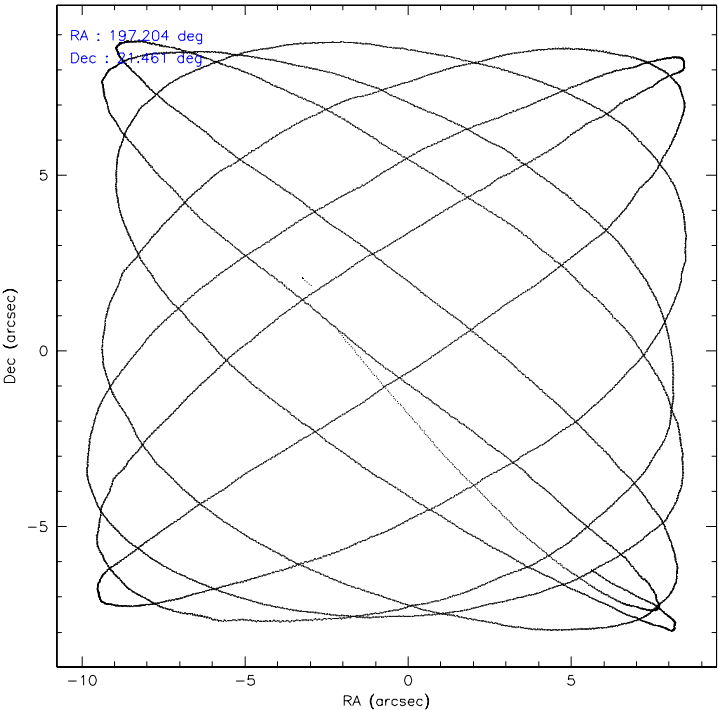
	ccd 7
level 1 events	27322
rejected events	4094
rejected %	14%

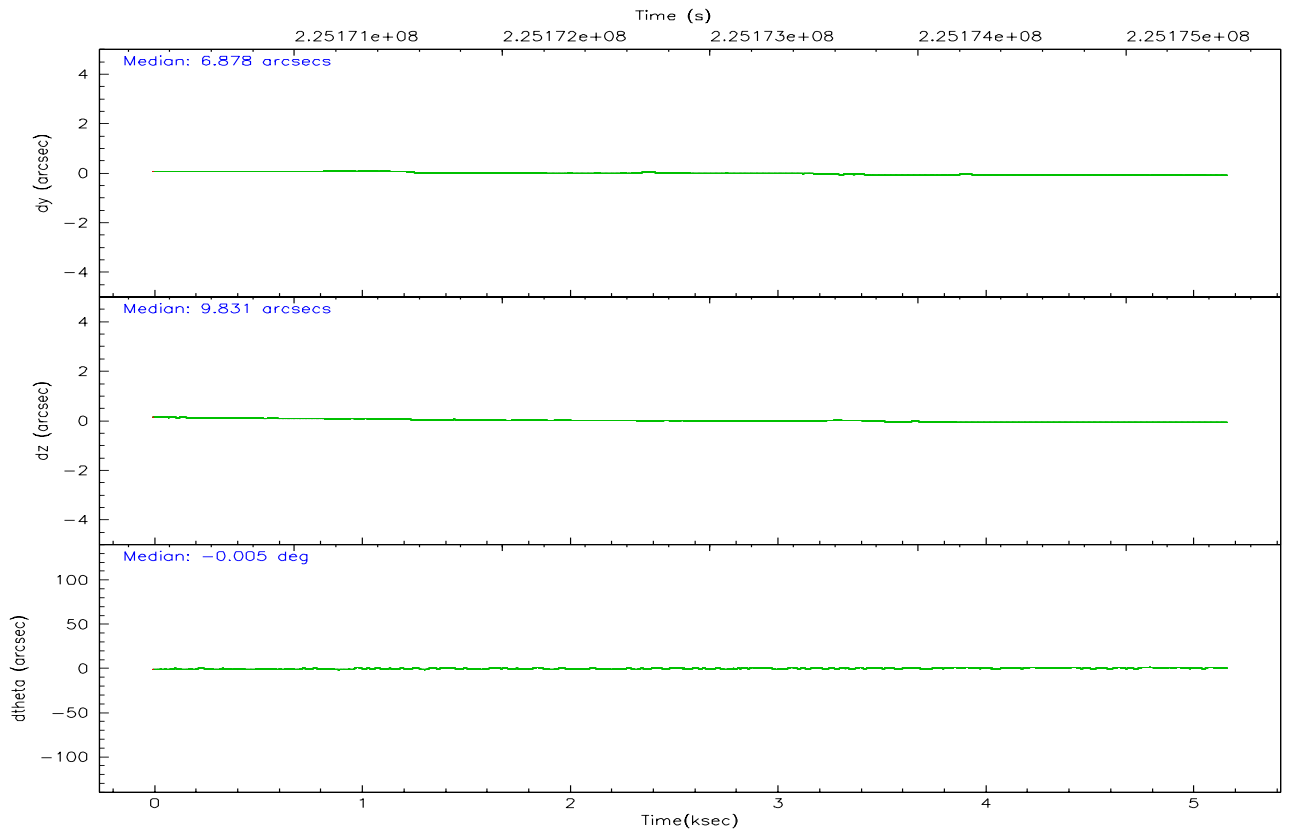
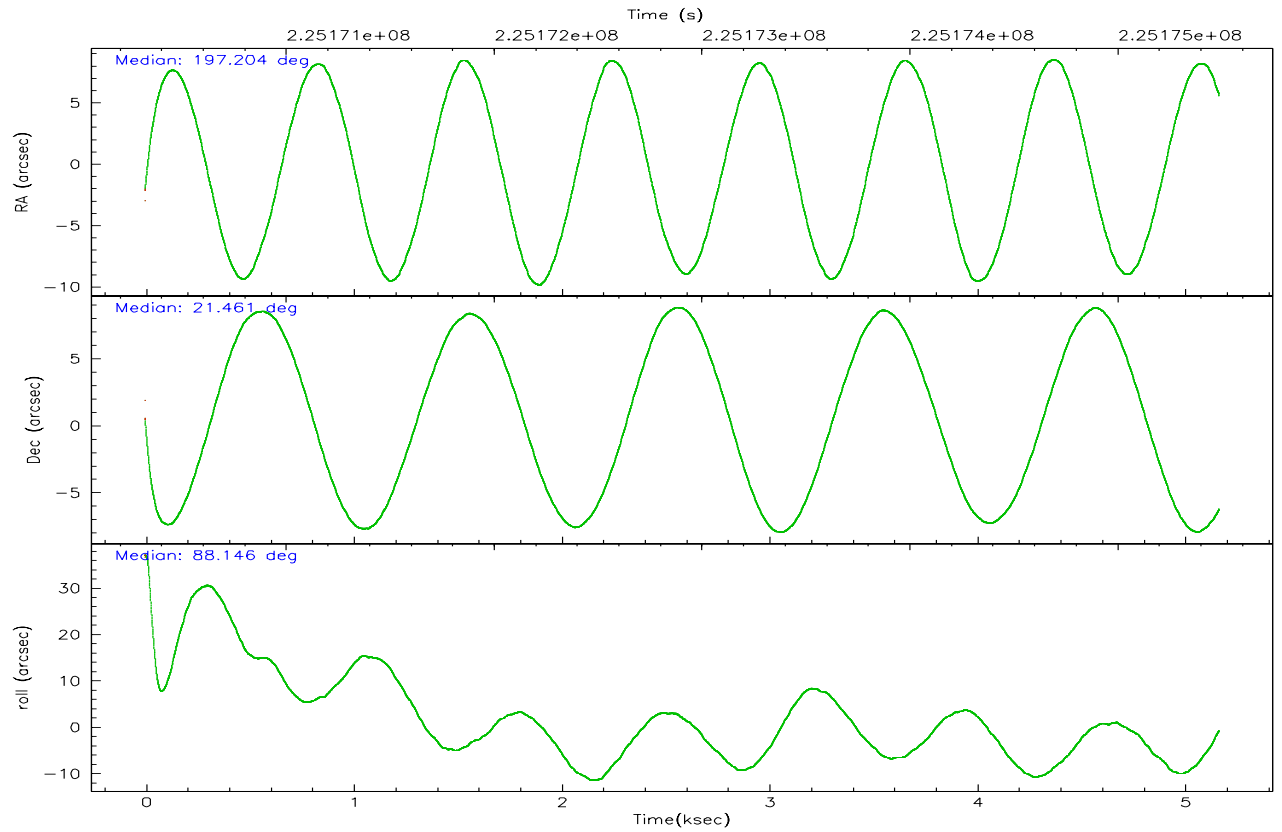
	ccd 7
grade 0 events	2823
	10%
grade 1 events	47
	0%
grade 2 events	5972
	21%
grade 3 events	1134
	4%
grade 4 events	1137
	4%
grade 5 events	3556
	13%
grade 6 events	12652
	46%
grade 7 events	1
	0%

2.2 Compared Parameters

Parameter	Planned	Actual	Parameter	Planned	Actual
Instrument	ACIS	ACIS	Obspar format version number	6	6
Detector	ACIS-7	ACIS-7	Obspar file type	PREDICTED	ACTUAL
Grating	NONE	NONE	Obspar update status	NONE	UPDATED
Data mode	CC33_FAINT	CC33_FAINT	On-chip summing requested	N	N
Observation mode	POINTING	POINTING	Subarray requested	NONE	NONE
Pointing RA	197.217552	197.2034313013742	Alternating exposures requested	N	N
Pointing Dec	21.437519	21.4612806222062	Primary exposure time	0.000000	0
Pointing Roll	87.994044	88.15588884946098			
SIM focus pos (mm)	-0.684267	-0.6828225247311905			
SIM defocus (mm)	0	0.001444936568705701			
SIM translation stage pos (mm)	-190.132523	-190.1425803651734			
SIM translation stage offset (mm)	0	0.01005778216563158			
Observation start time	225170480.184000	225170203.71623			
Observation start date	2005-02-19T03:20:16	2005-02-19T03:16:43			
Observation end time	225175480.184000	225177032.77904			
Observation end date	2005-02-19T04:43:36	2005-02-19T05:10:32			
Read mode	CONTINUOUS	CONTINUOUS			

2.3 Aspect



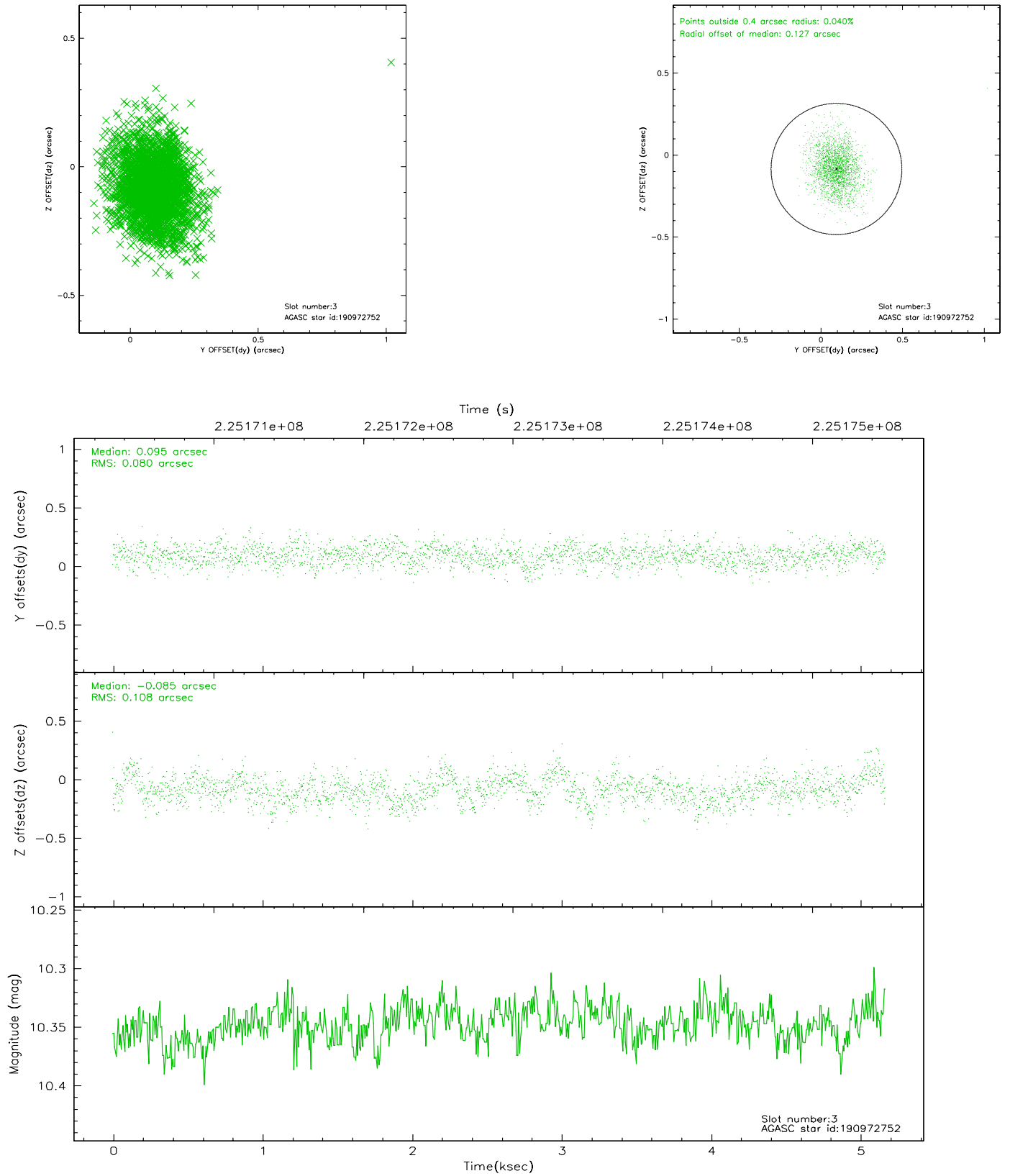


Slot Statistics

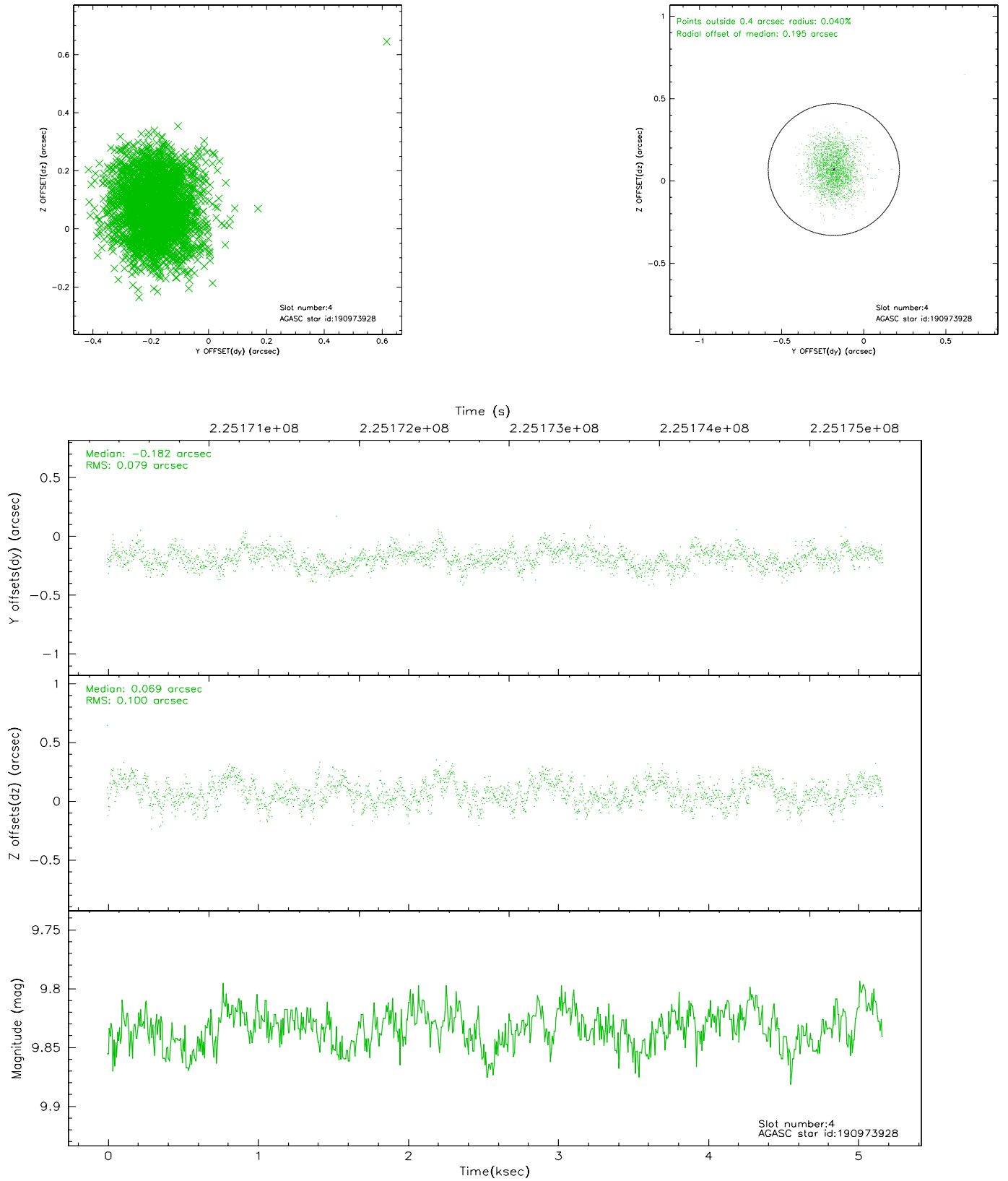
slot	status	id	mag	n_pts	med_dy	med_dz	dr1	dr2	ra	dec	mean_y	mean_z
0	FID	ACIS-S-2	7.10	1261	-0.046	-0.009	0.006	0.011	0.000000	0.000000	-759.63	-1731.06
1	FID	ACIS-S-4	7.21	1261	0.054	0.024	0.005	0.008	0.000000	0.000000	2153.18	176.30
2	FID	ACIS-S-5	7.23	1261	-0.039	-0.007	0.006	0.011	0.000000	0.000000	-1811.00	171.20
3	GUIDE	190972752	10.35	2516	0.095	-0.085	0.139	0.234	197.567107	21.351082	-267.88	-1181.80
4	GUIDE	190973928	9.83	2521	-0.182	0.069	0.137	0.211	197.904188	21.564389	542.61	-2280.94
5	GUIDE	190974376	6.81	2522	-0.235	0.148	0.068	0.117	197.884749	21.918670	1814.59	-2166.29
6	GUIDE	190979840	10.37	2520	0.189	-0.078	0.234	0.348	197.337465	20.846267	-2111.57	-478.86
7	GUIDE	190971944	10.05	2518	0.143	-0.049	0.156	0.277	197.963793	22.064478	2349.12	-2408.67

2.4 Star Slots

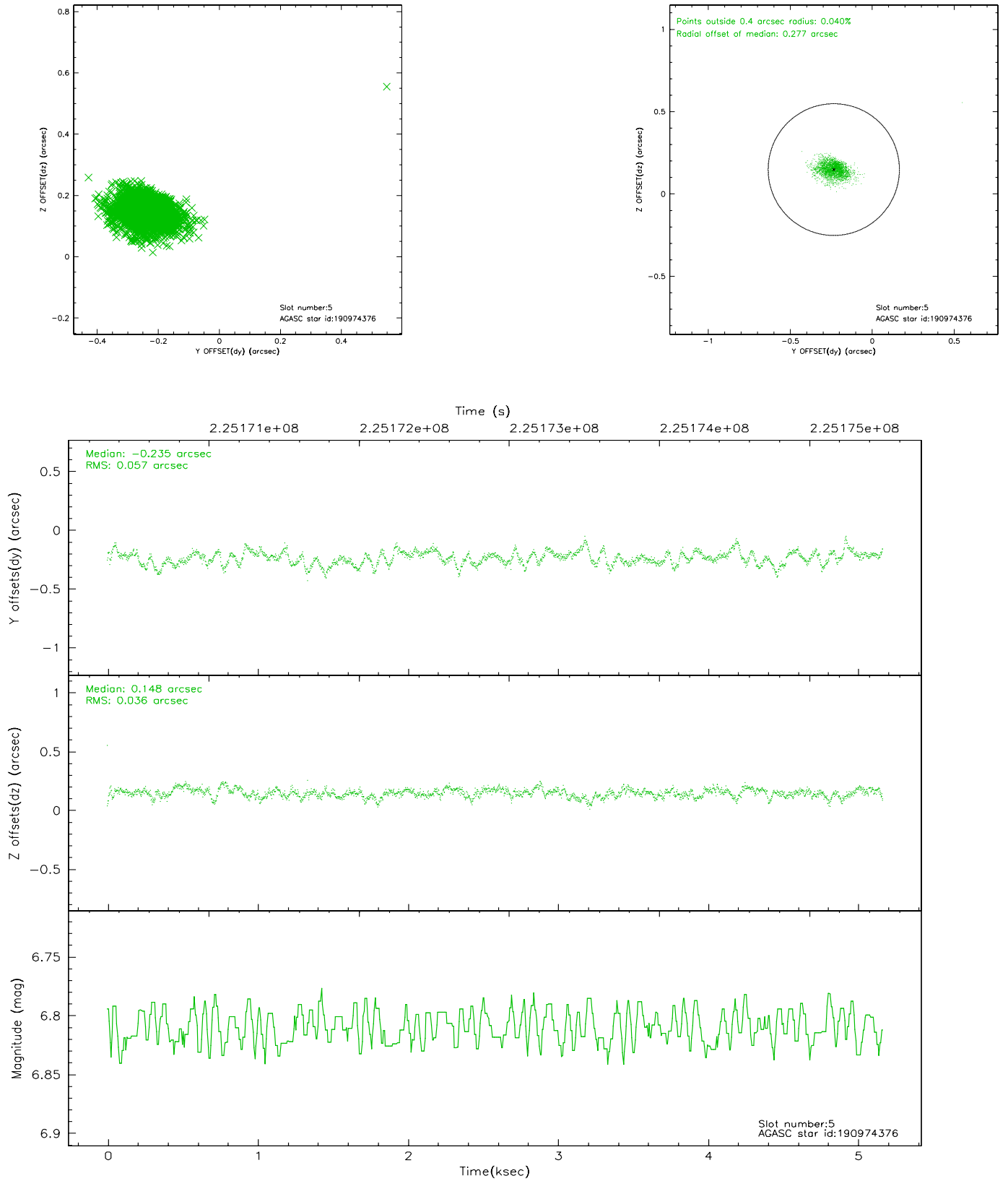
2.4.1 Slot 3



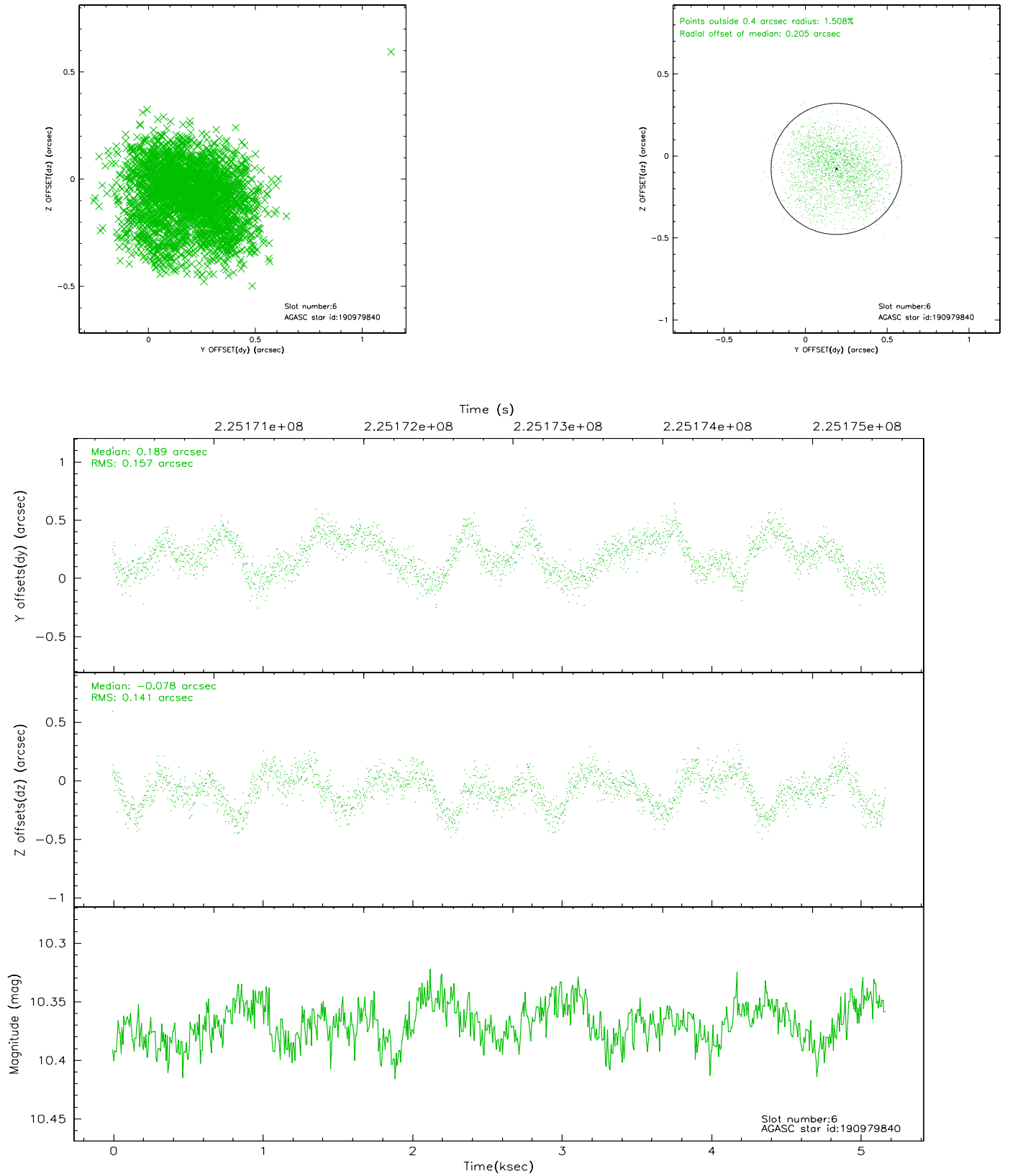
2.4.2 Slot 4



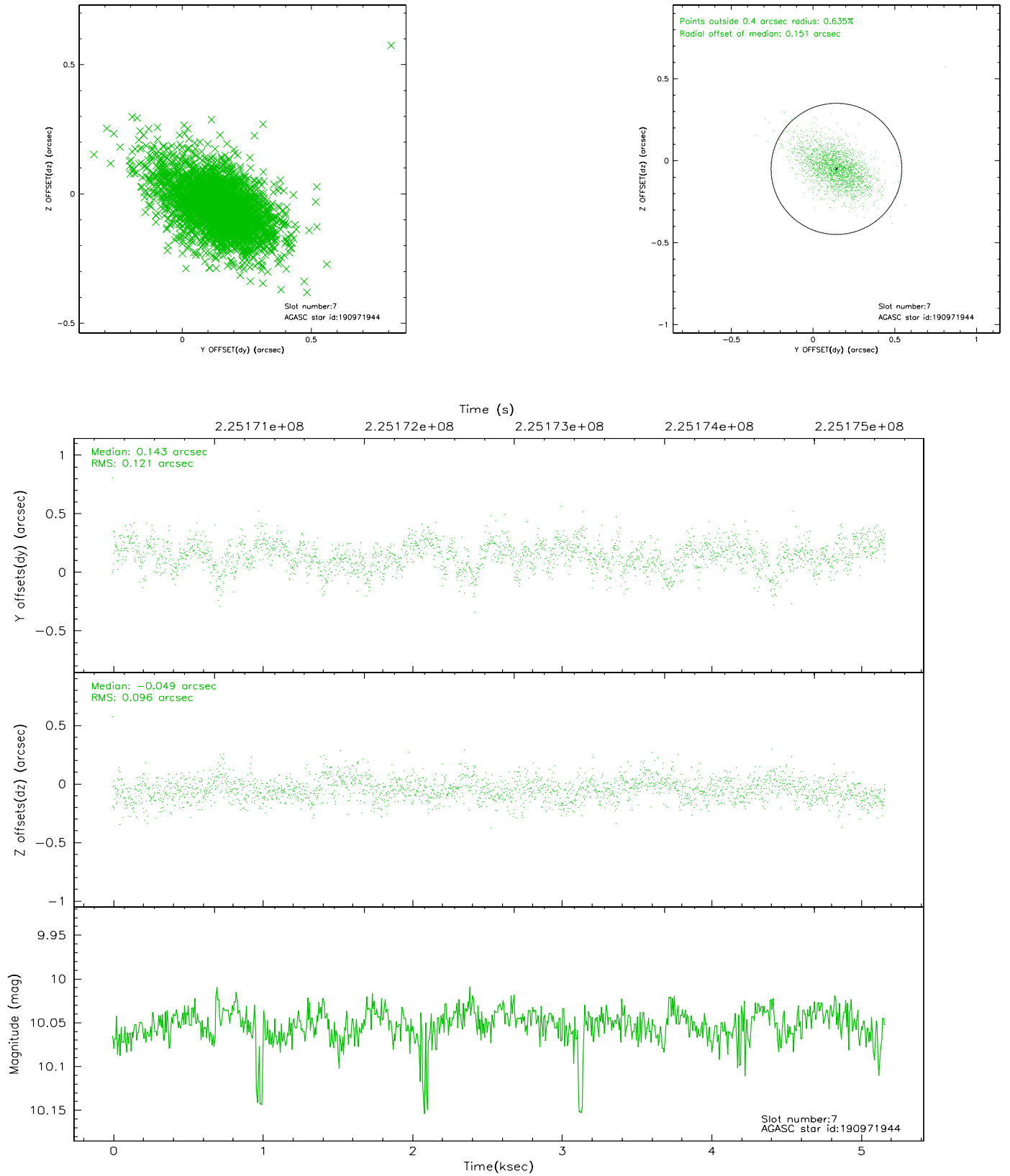
2.4.3 Slot 5



2.4.4 Slot 6

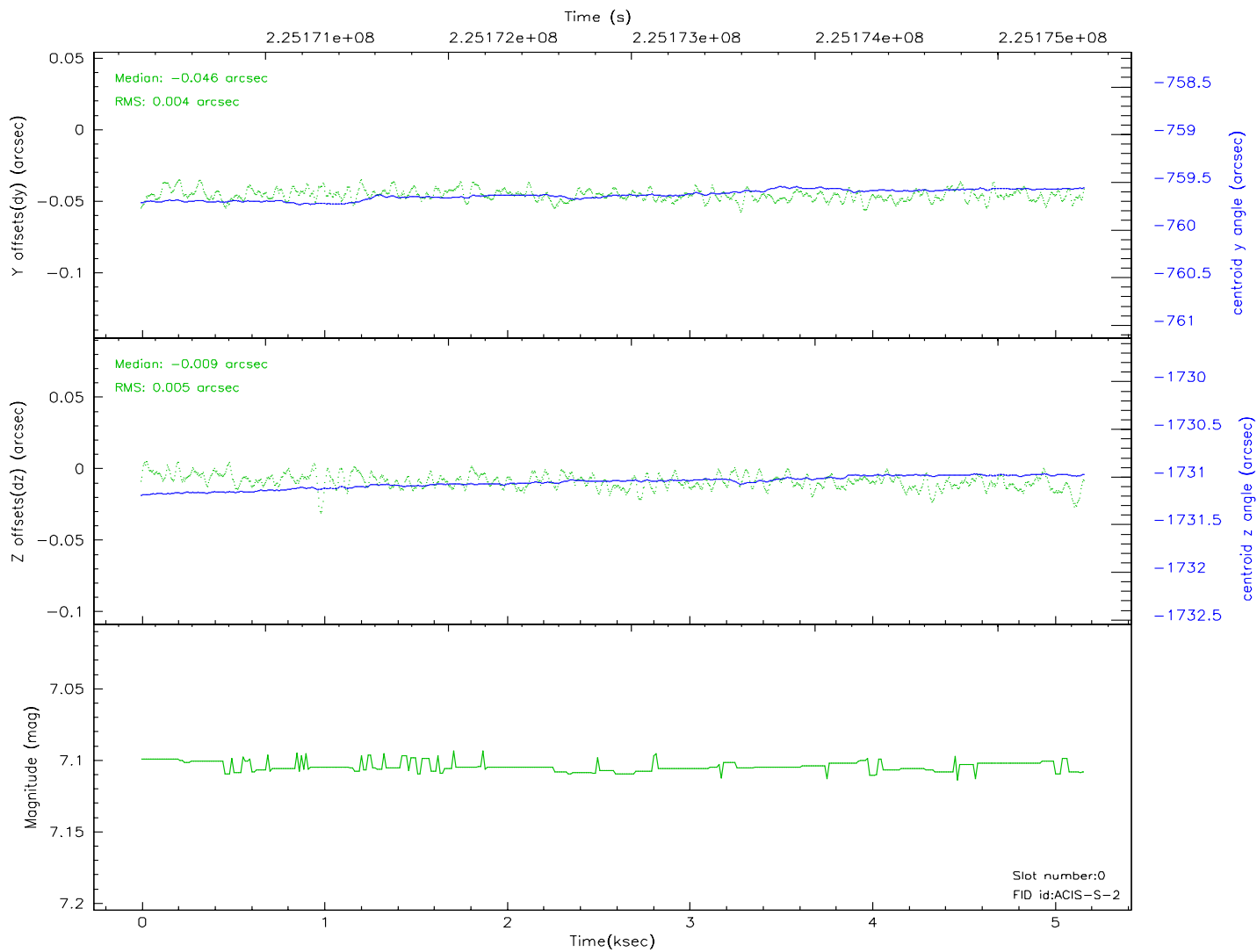
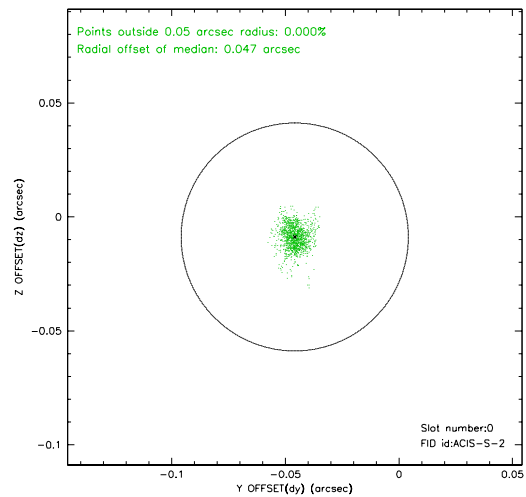
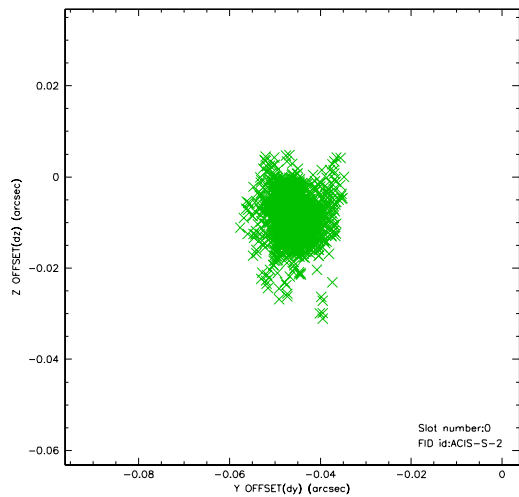


2.4.5 Slot 7

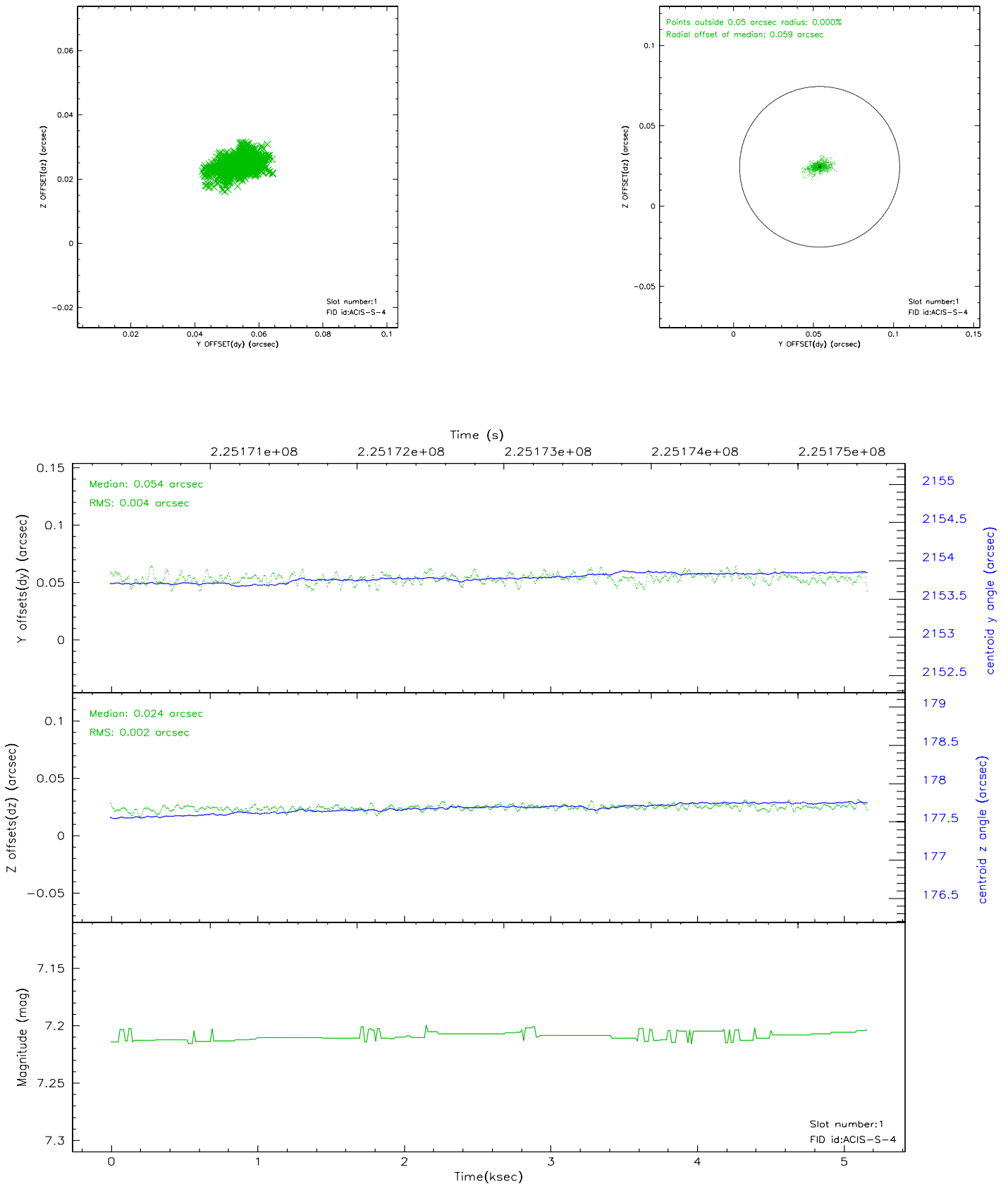


2.5 FID Slots

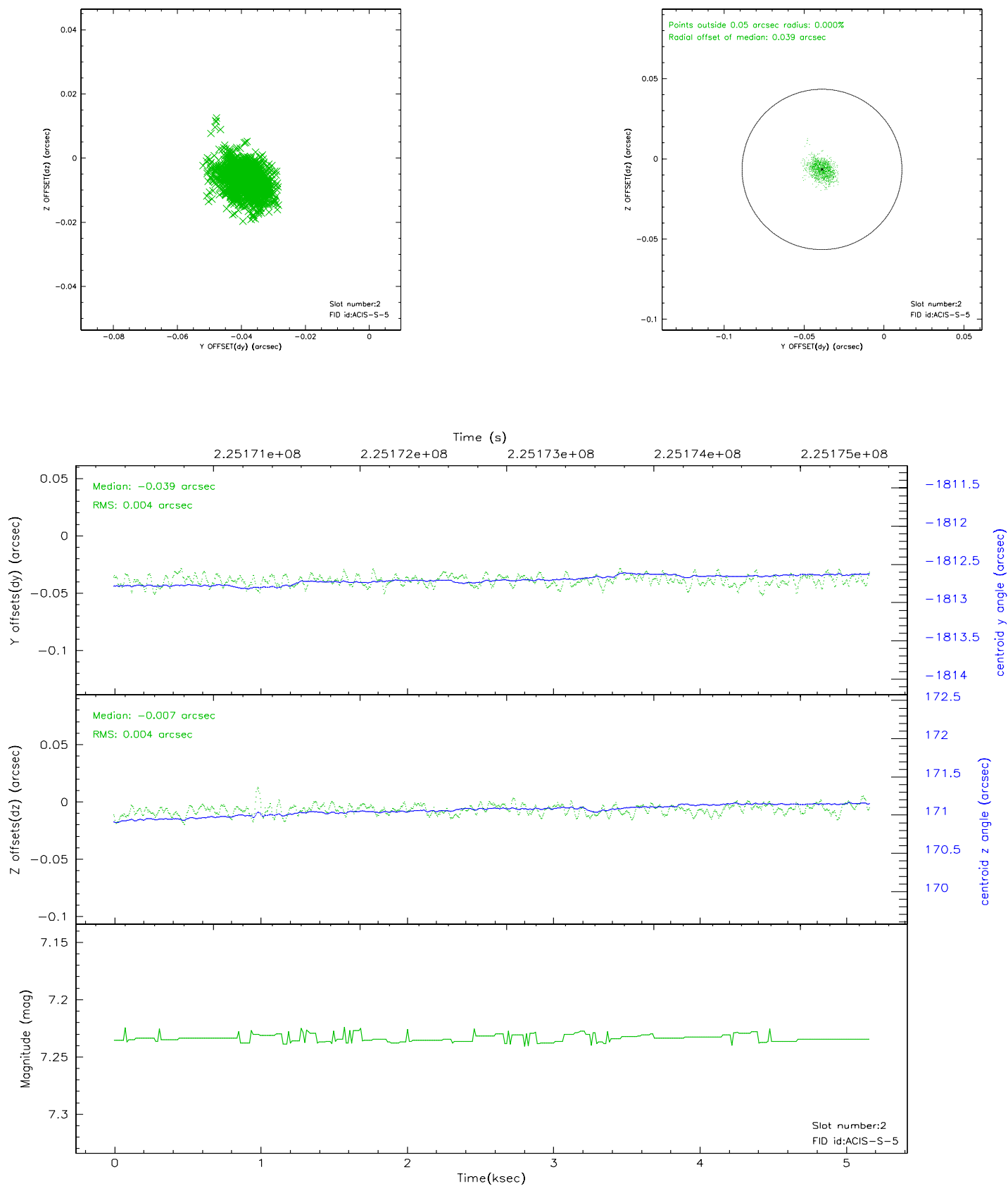
2.5.1 Slot 0



2.5.2 Slot 1



2.5.3 Slot 2



A Summary

A.1 Status

V&V Scientist	Beth Sundheim
V&V Date (YYYY-MM-DD)	2006.09.12
V&V Edition	1
V&V Disposition and Status	OK
V&V Charge Time	5.165

A.2 Comments