

V&V Reference Report

L2 ASCDS Version : 7.6.7.1

Observation 5516 - L2 Version 002
Chandra X-Ray Center

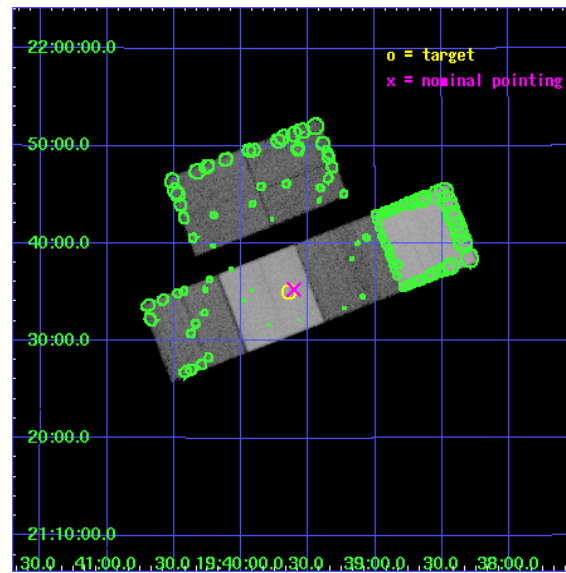
L2 Processing Date : Mar 11 2006

Contents

1	Front	2
2	OBI	3
2.1	OBI	3
2.1.1	Images	3
2.1.2	Bias	3
2.1.3	Parameters	4
2.1.4	Events	4
2.2	Compared Parameters	5
2.3	Aspect	6
2.4	Star Slots	9
2.4.1	Slot 3	9
2.4.2	Slot 4	10
2.4.3	Slot 5	11
2.4.4	Slot 6	12
2.4.5	Slot 7	13
2.5	FID Slots	14
2.5.1	Slot 0	14
2.5.2	Slot 1	15
2.5.3	Slot 2	16
3	Point Sources	17
A	Summary	18
A.1	Status	18
A.2	Comments	18

1 Front

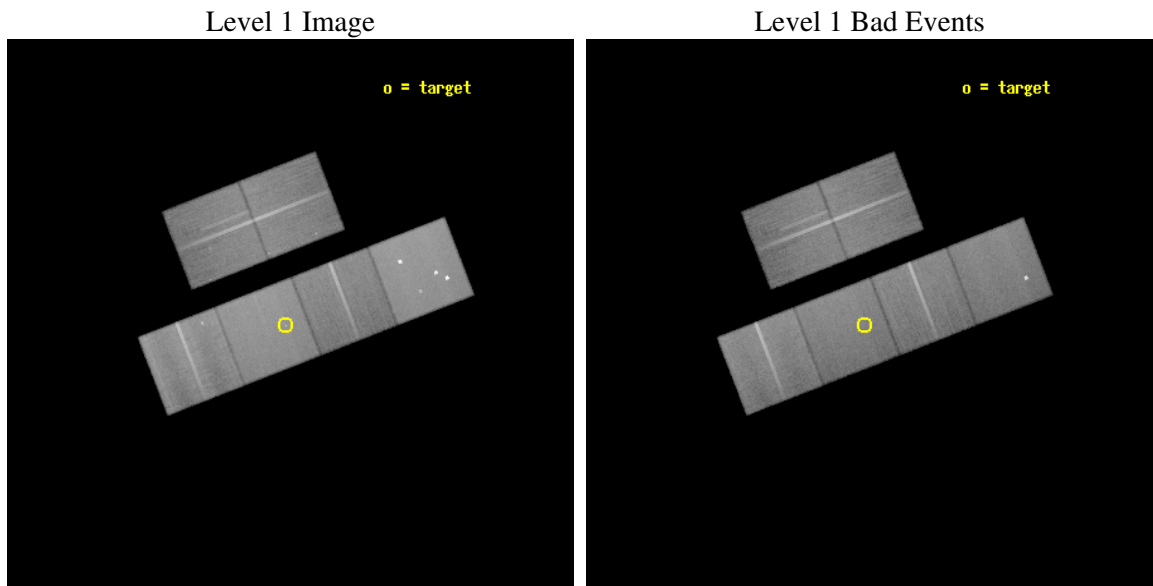
seq_num	500510
obs_id	5516
title	Spatial extent and spectrum of the X-ray DC component of millisecond pulsar PSR B1937+21
observer	Dr. Mariano Mendez
object	PSR B1937+21
dtcycle	0
cycle	P
ra_targ	294.910833
dec_targ	21.583083
ra_nom	294.90196588741
dec_nom	21.588093626786
roll_nom	158.78812141828
revision	2
ontime	50137.599813223
livetime	49502.72733515
ontime2	50131.117852598
ontime3	50137.599813223
ontime5	50137.599813223
ontime6	50137.599813223
ontime7	50137.599813223
ontime8	50137.599813223
l2events	605826



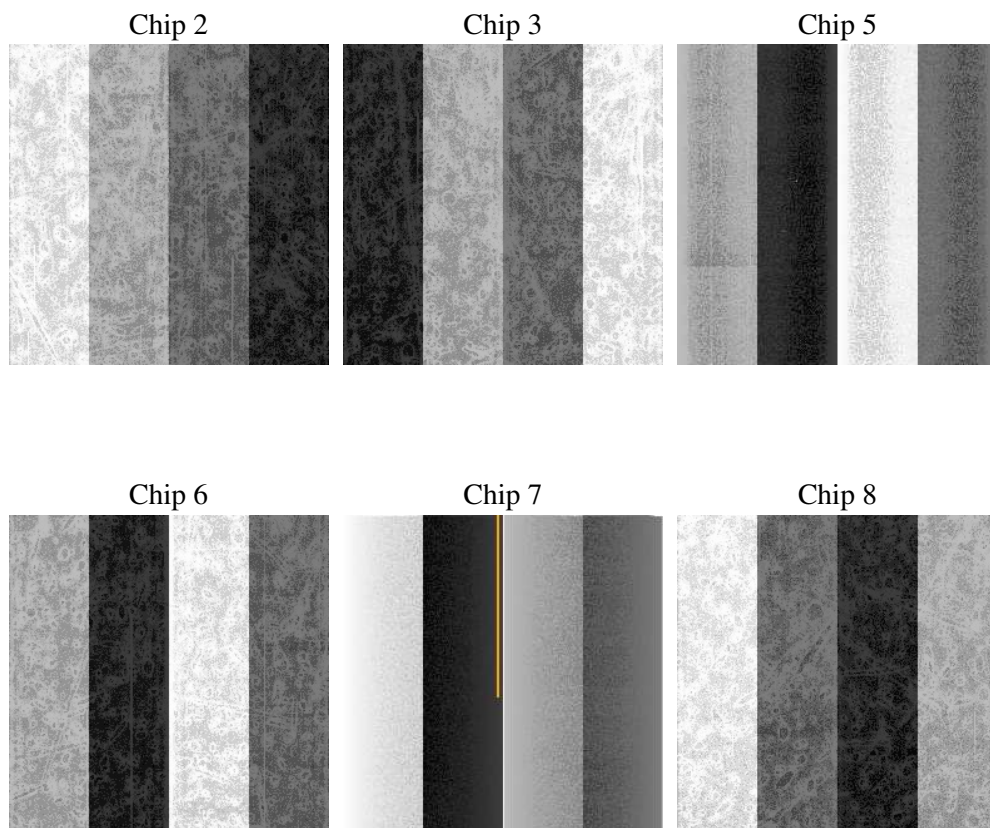
2 OBI

2.1 OBI

2.1.1 Images



2.1.2 Bias



2.1.3 Parameters

obi_num	0
ascdsver	7.6.7.1
caldsver	3.2.1
date	2006-03-12T00:47:35
revision	2

sched_exp_time	50000.000000
ontime	50355.570581764
ontime2	50349.088601232
ontime3	50355.570561856
ontime5	50355.570581764
ontime6	50355.570561856
ontime7	50355.570581764
ontime8	50355.570561856
l1events	2827834

2.1.4 Events

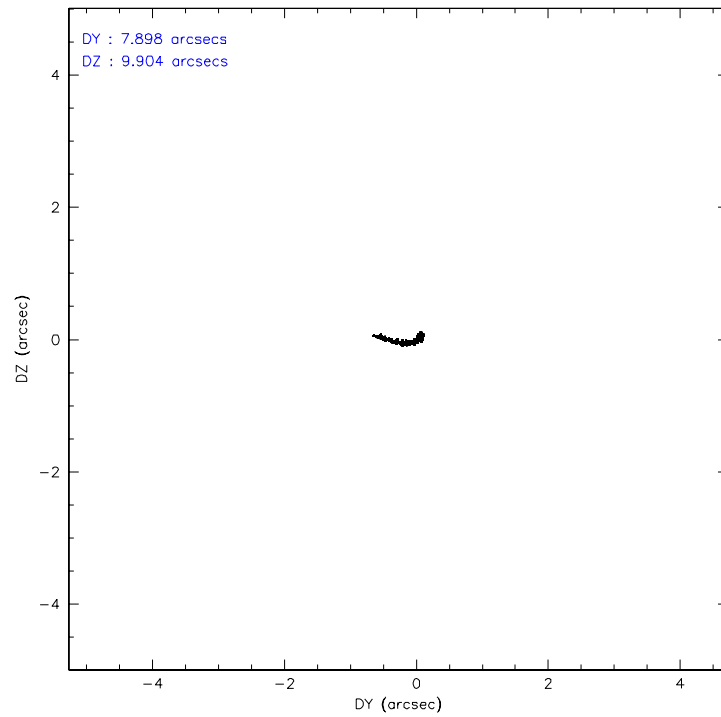
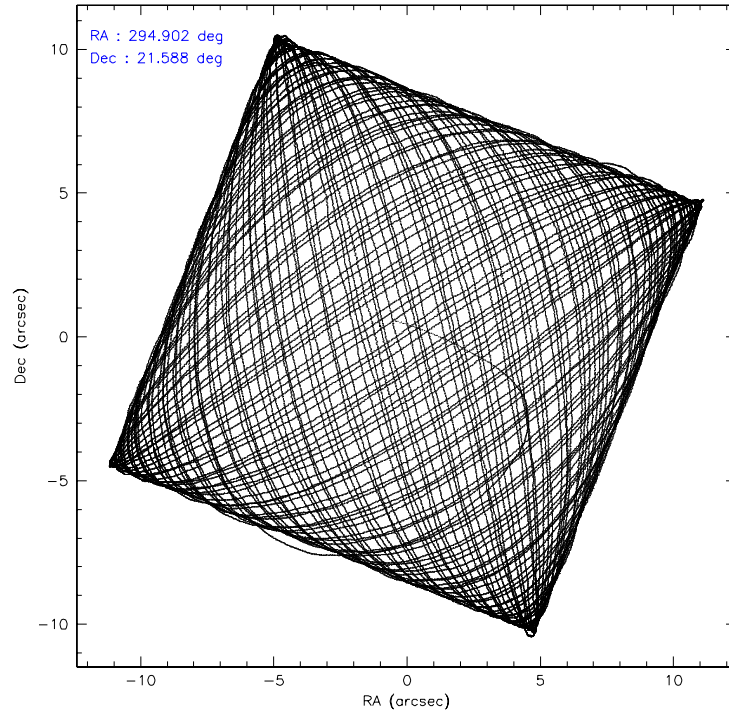
	ccd 2	ccd 3	ccd 5	ccd 6	ccd 7	ccd 8
level 1 events	403360	383785	613330	397663	534303	495393
rejected events	356177	338975	337401	350987	334402	388094
rejected %	88%	88%	55%	88%	62%	78%

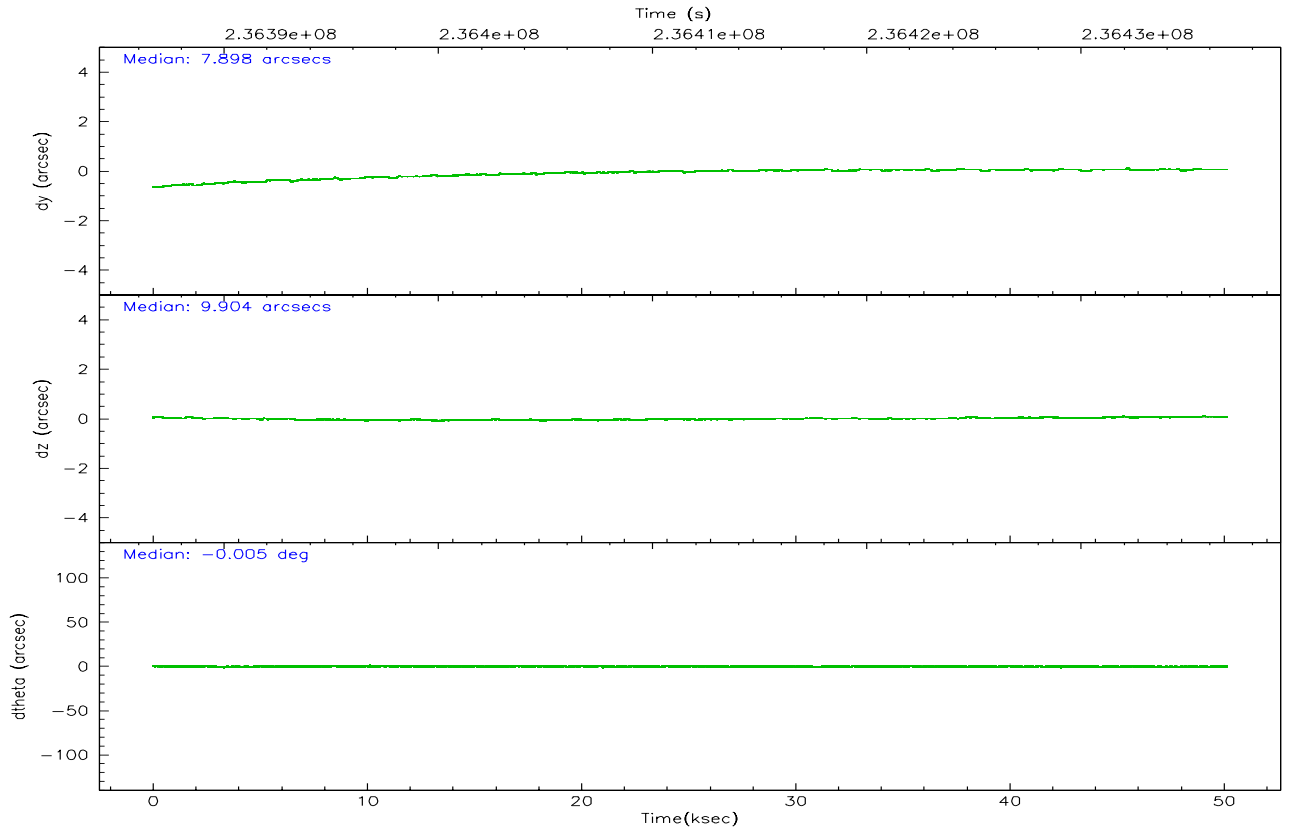
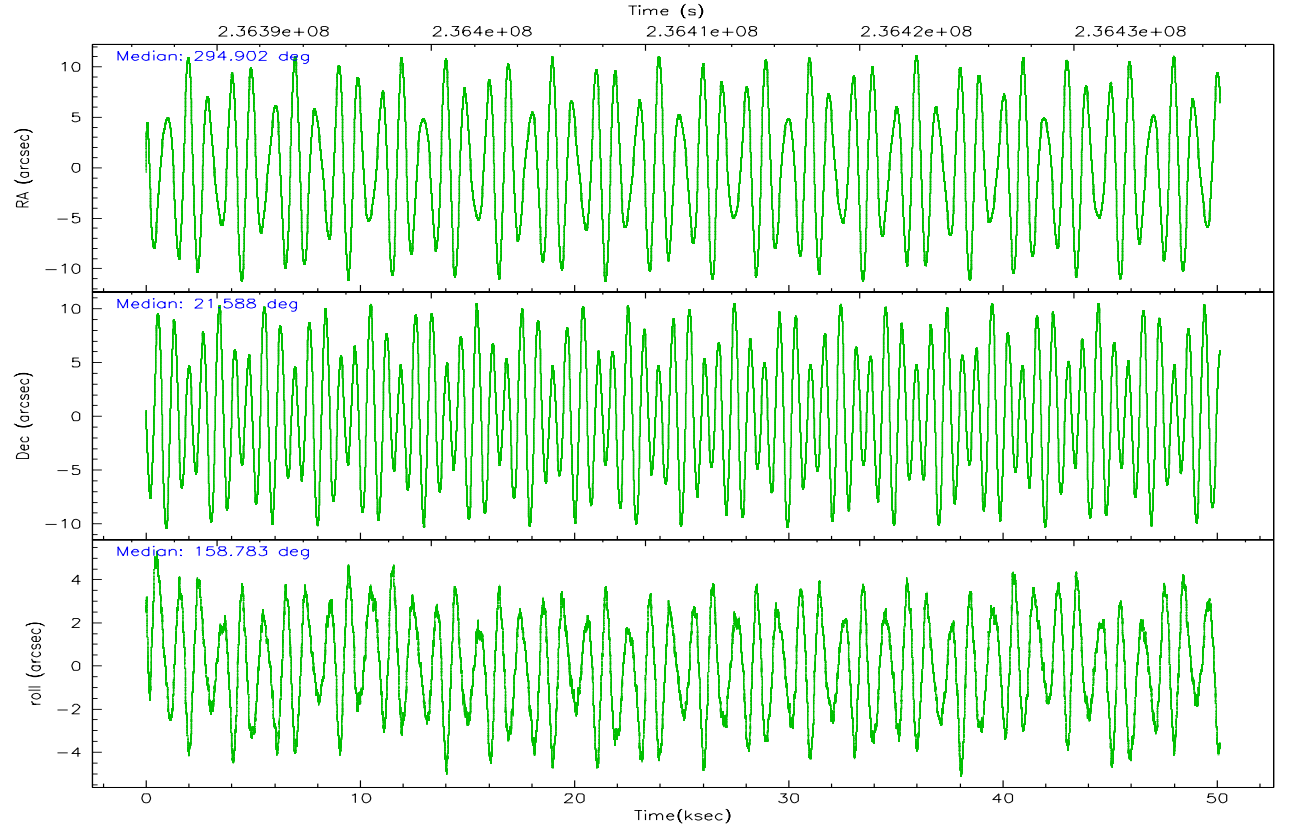
	ccd 2	ccd 3	ccd 5	ccd 6	ccd 7	ccd 8
grade 0 events	20856	19747	31952	18242	10091	34705
	5%	5%	5%	4%	1%	7%
grade 1 events	235	269	509	213	327	354
	0%	0%	0%	0%	0%	0%
grade 2 events	9878	8650	85841	10080	50361	23522
	2%	2%	13%	2%	9%	4%
grade 3 events	4342	4371	5191	4478	9279	11403
	1%	1%	0%	1%	1%	2%
grade 4 events	4494	4376	4937	4473	9218	10765
	1%	1%	0%	1%	1%	2%
grade 5 events	15841	17588	28905	18858	33809	24104
	3%	4%	4%	4%	6%	4%
grade 6 events	7832	7855	149265	9604	121815	27343
	1%	2%	24%	2%	22%	5%
grade 7 events	339882	320929	306730	331715	299403	363197
	84%	83%	50%	83%	56%	73%

2.2 Compared Parameters

Parameter	Planned	Actual	Parameter	Planned	Actual
Instrument	ACIS	ACIS	Obspar format version number	6	6
Detector	ACIS-235678	ACIS-235678	Obspar file type	PREDICTED	ACTUAL
Grating	NONE	NONE	Obspar update status	NONE	UPDATED
Data mode	FAINT	FAINT	On-chip summing requested	N	N
Observation mode	POINTING	POINTING	Subarray requested	NONE	NONE
Pointing RA	294.930823	294.9019658874051	Alternating exposures requested	N	N
Pointing Dec	21.592635	21.58809362678554	Primary exposure time	0.000000	3.2
Pointing Roll	158.620875	158.7881214182797			
SIM focus pos (mm)	-0.684267	-0.6828225247311905			
SIM defocus (mm)	0	0.001444936568705701			
SIM translation stage pos (mm)	-190.132523	-190.1425803651734			
SIM translation stage offset (mm)	0	0.01005778216563158			
Observation start time	236386812.184000	236385654.80135			
Observation start date	2005-06-28T22:59:08	2005-06-28T22:40:54			
Observation end time	236436812.184000	236437442.92871			
Observation end date	2005-06-29T12:52:28	2005-06-29T13:04:02			
Read mode	TIMED	TIMED			

2.3 Aspect



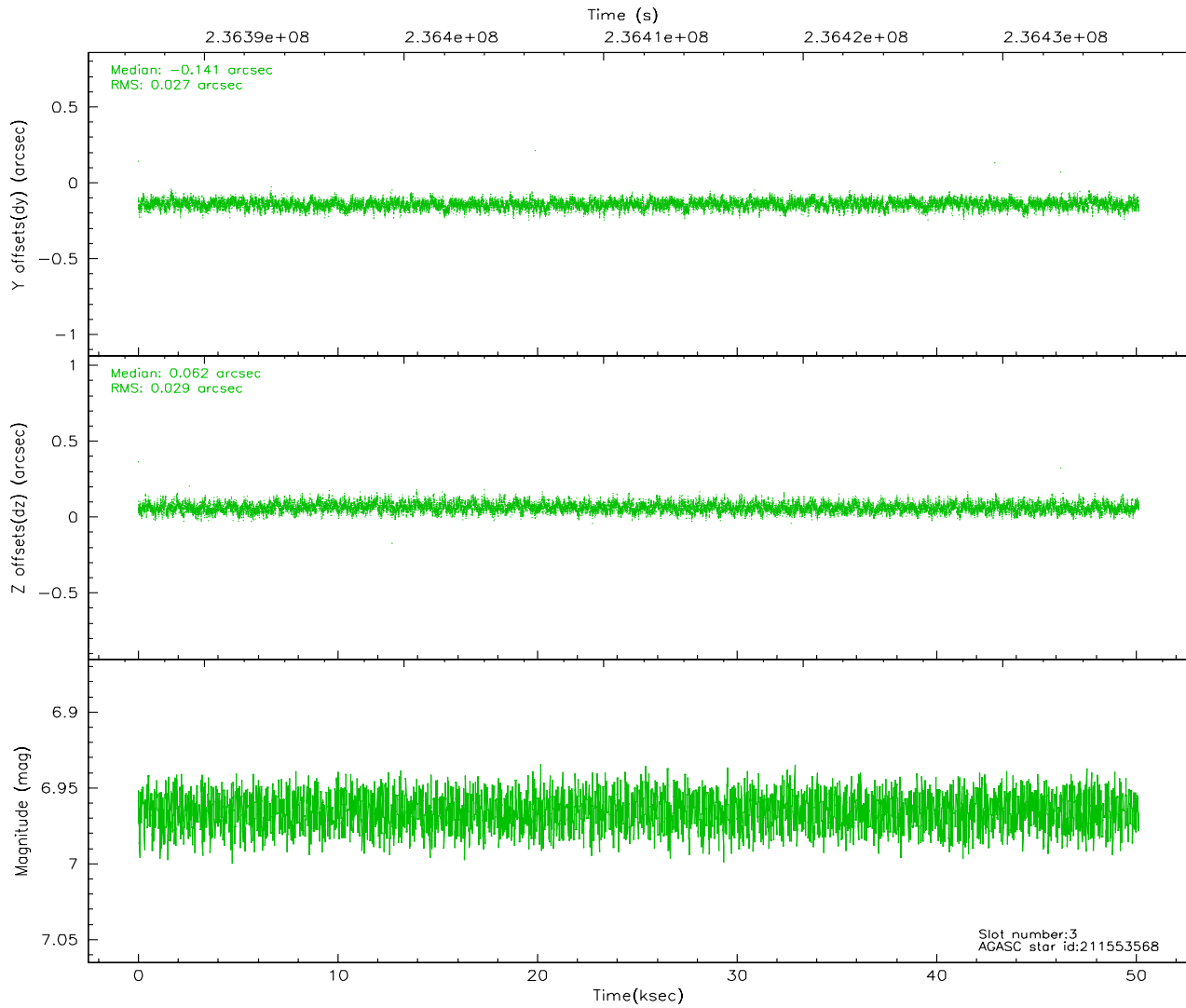
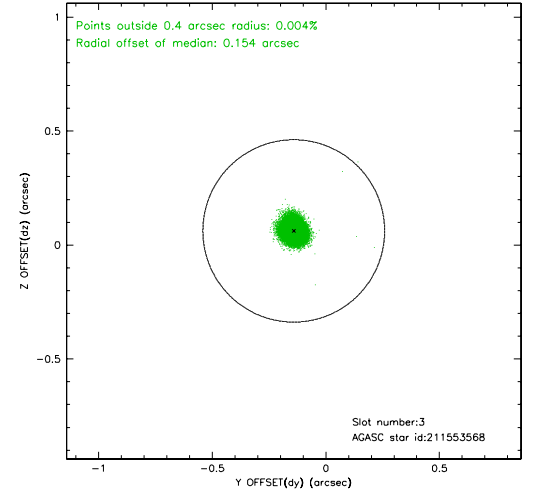
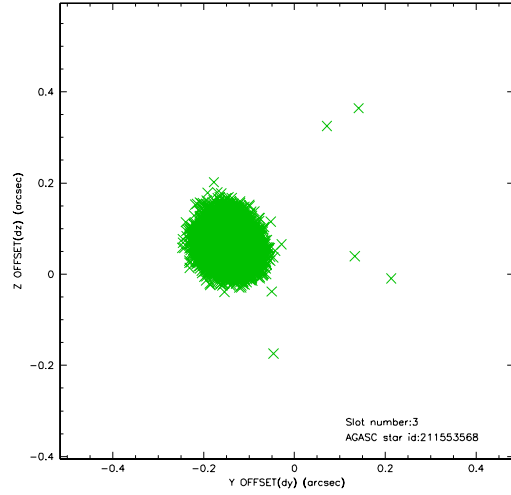


Slot Statistics

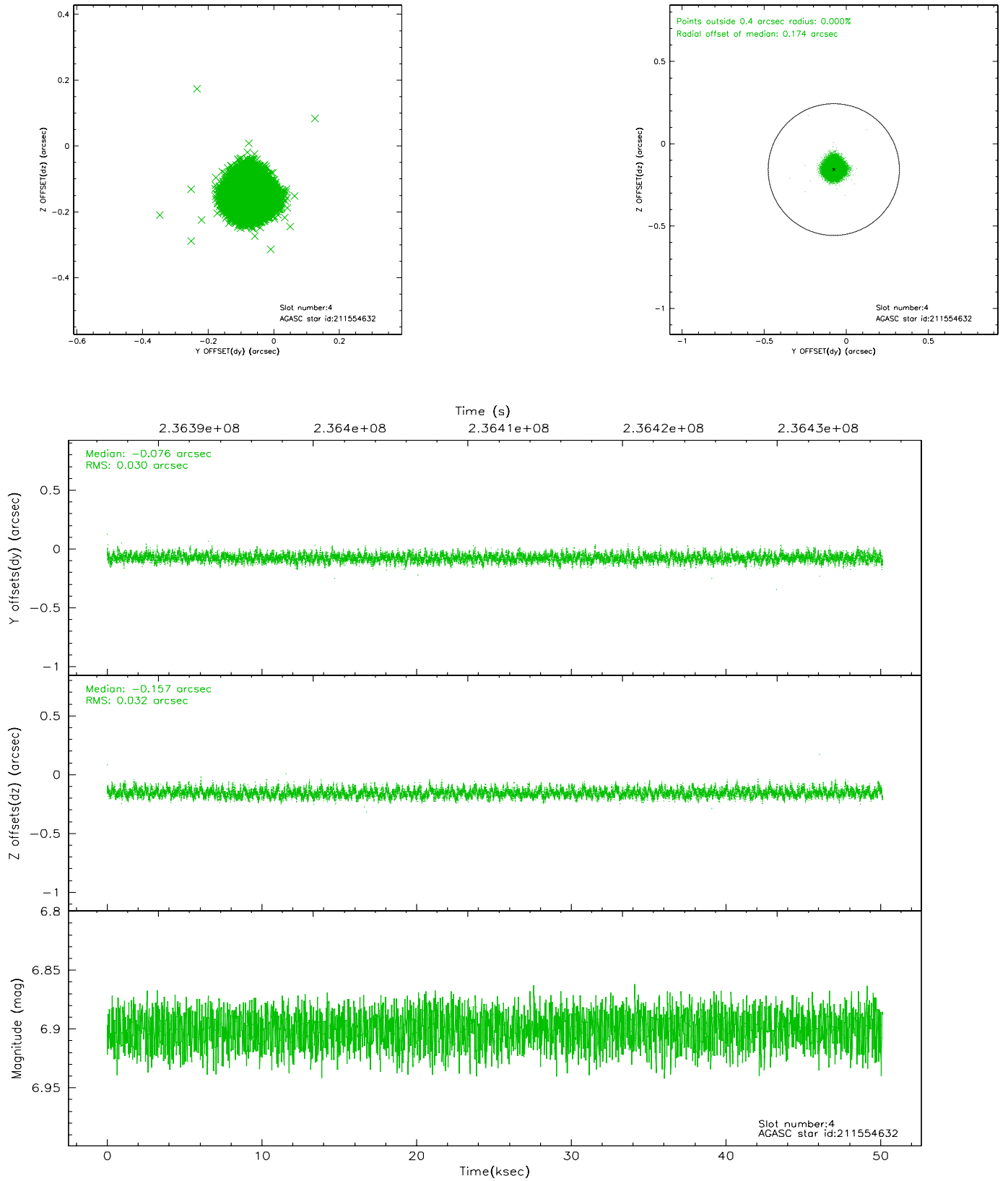
slot	status	id	mag	n_pts	med_dy	med_dz	dr1	dr2	ra	dec	mean_y	mean_z
0	FID	ACIS-S-2	7.11	12230	-0.031	-0.006	0.008	0.014	0.000000	0.000000	-760.57	-1731.12
1	FID	ACIS-S-4	7.21	12231	0.071	0.017	0.009	0.020	0.000000	0.000000	2152.78	177.47
2	FID	ACIS-S-5	7.23	12231	-0.069	-0.002	0.010	0.018	0.000000	0.000000	-1813.51	171.01
3	GUIDE	211553568	6.97	24463	-0.141	0.062	0.043	0.068	294.941136	22.027588	539.02	-1470.23
4	GUIDE	211554632	6.90	24461	-0.076	-0.157	0.047	0.075	294.877799	21.343444	-161.34	900.14
5	GUIDE	211554832	7.30	24460	-0.071	0.102	0.048	0.075	294.562841	21.884642	1528.65	-531.50
6	GUIDE	211558776	9.00	24444	0.180	-0.051	0.080	0.130	295.394666	21.069626	-2136.28	1182.85
7	GUIDE	211553272	8.89	24389	0.108	0.039	0.066	0.109	295.724251	21.735389	-2280.54	-1452.03

2.4 Star Slots

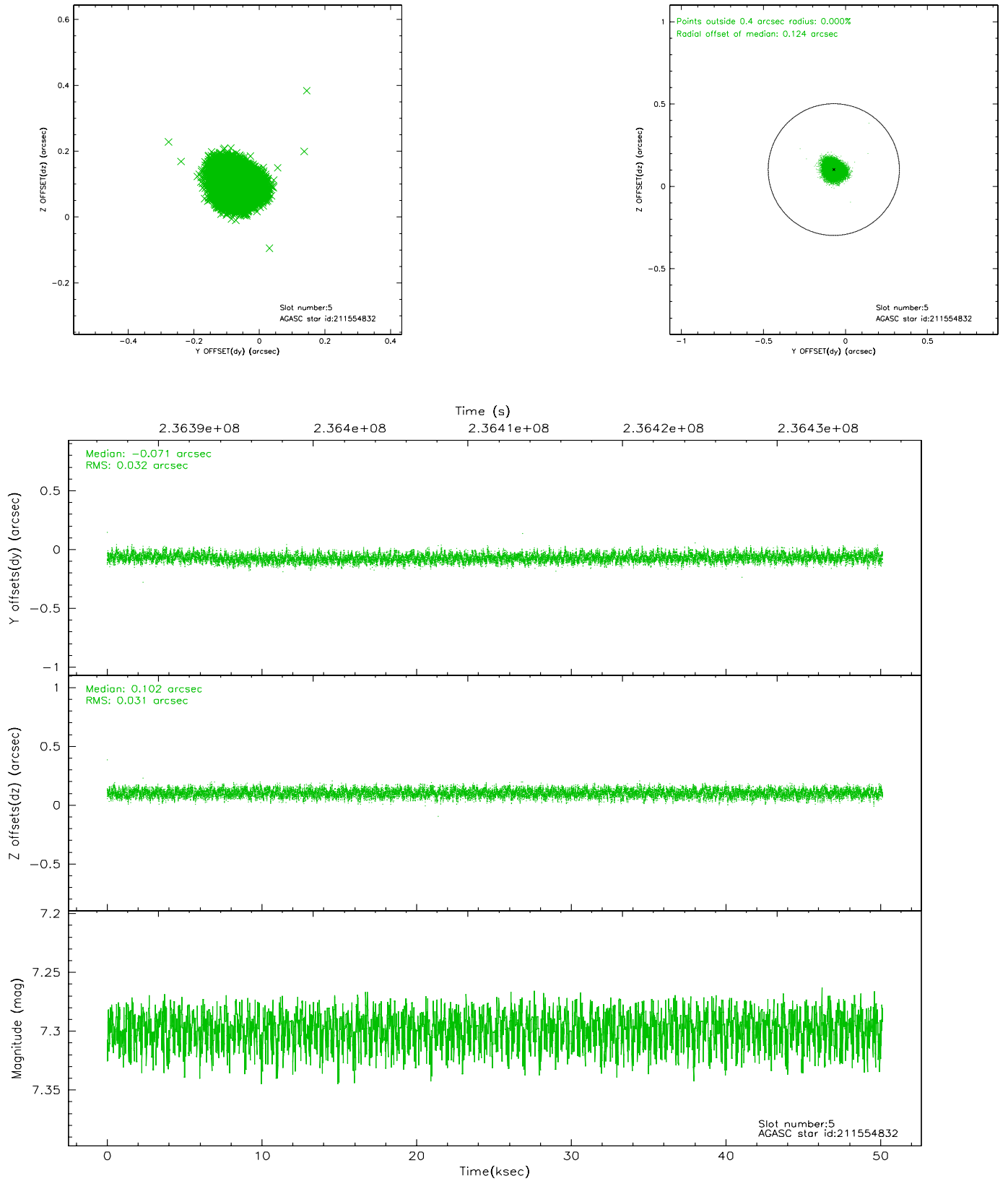
2.4.1 Slot 3



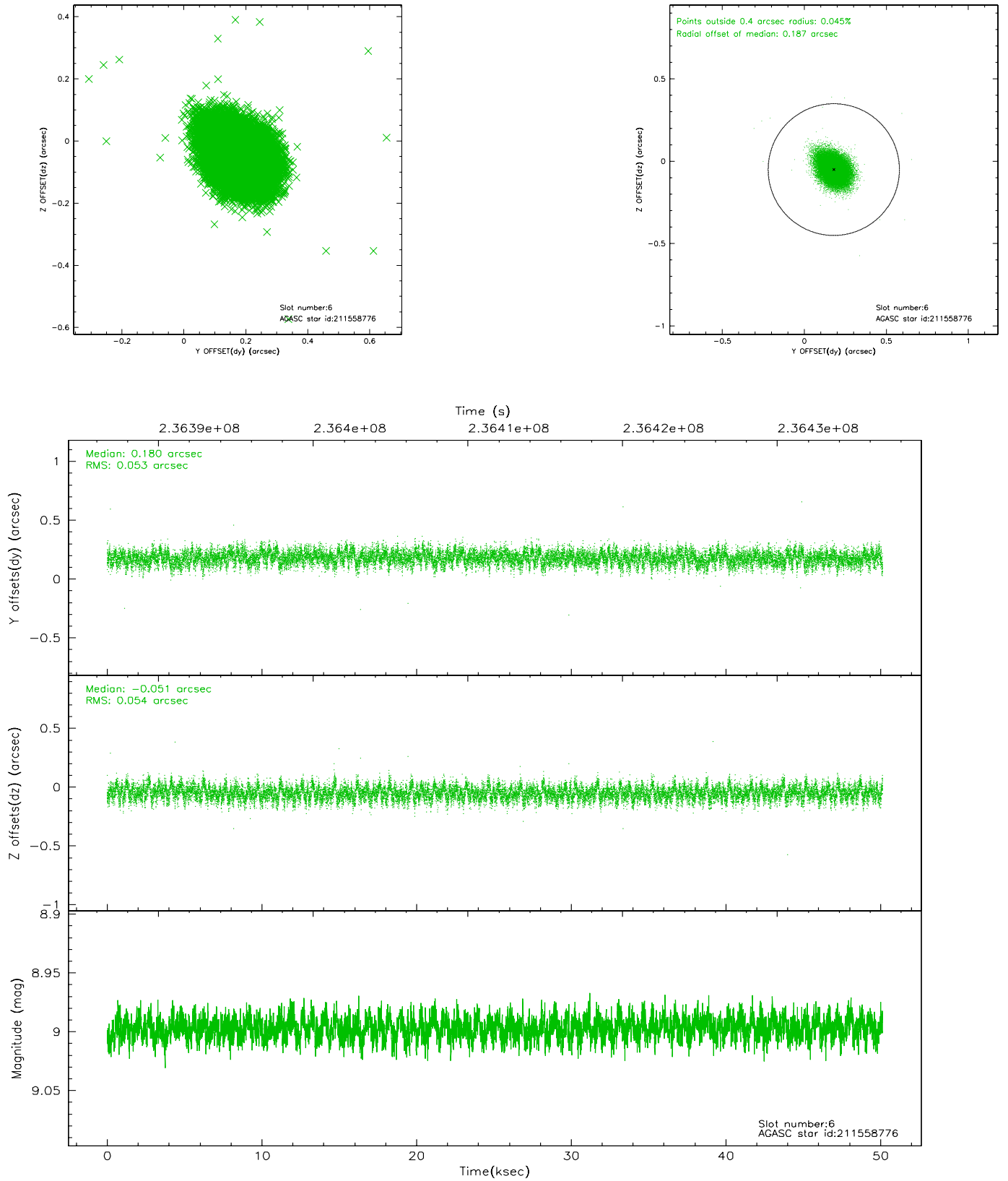
2.4.2 Slot 4



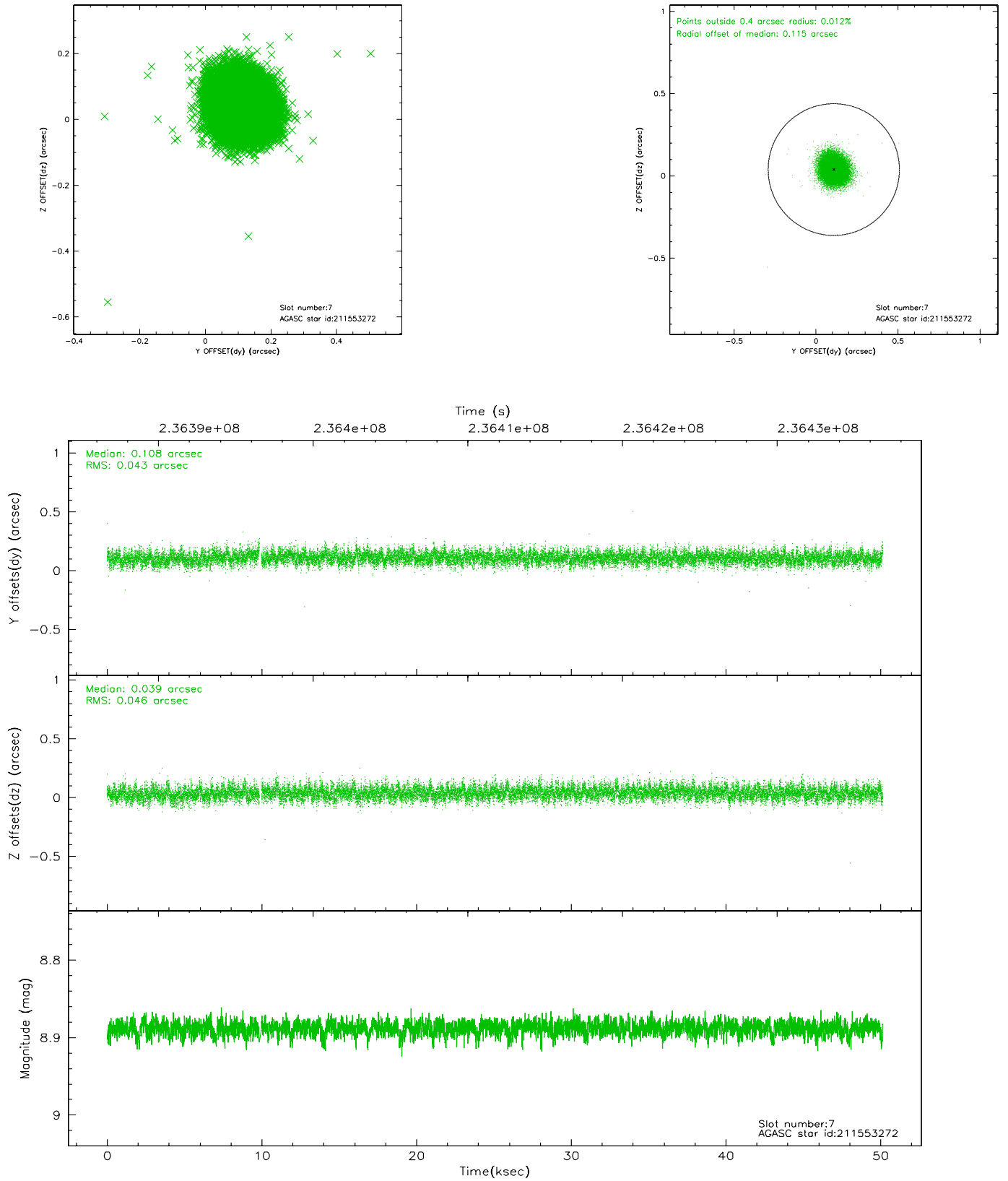
2.4.3 Slot 5



2.4.4 Slot 6

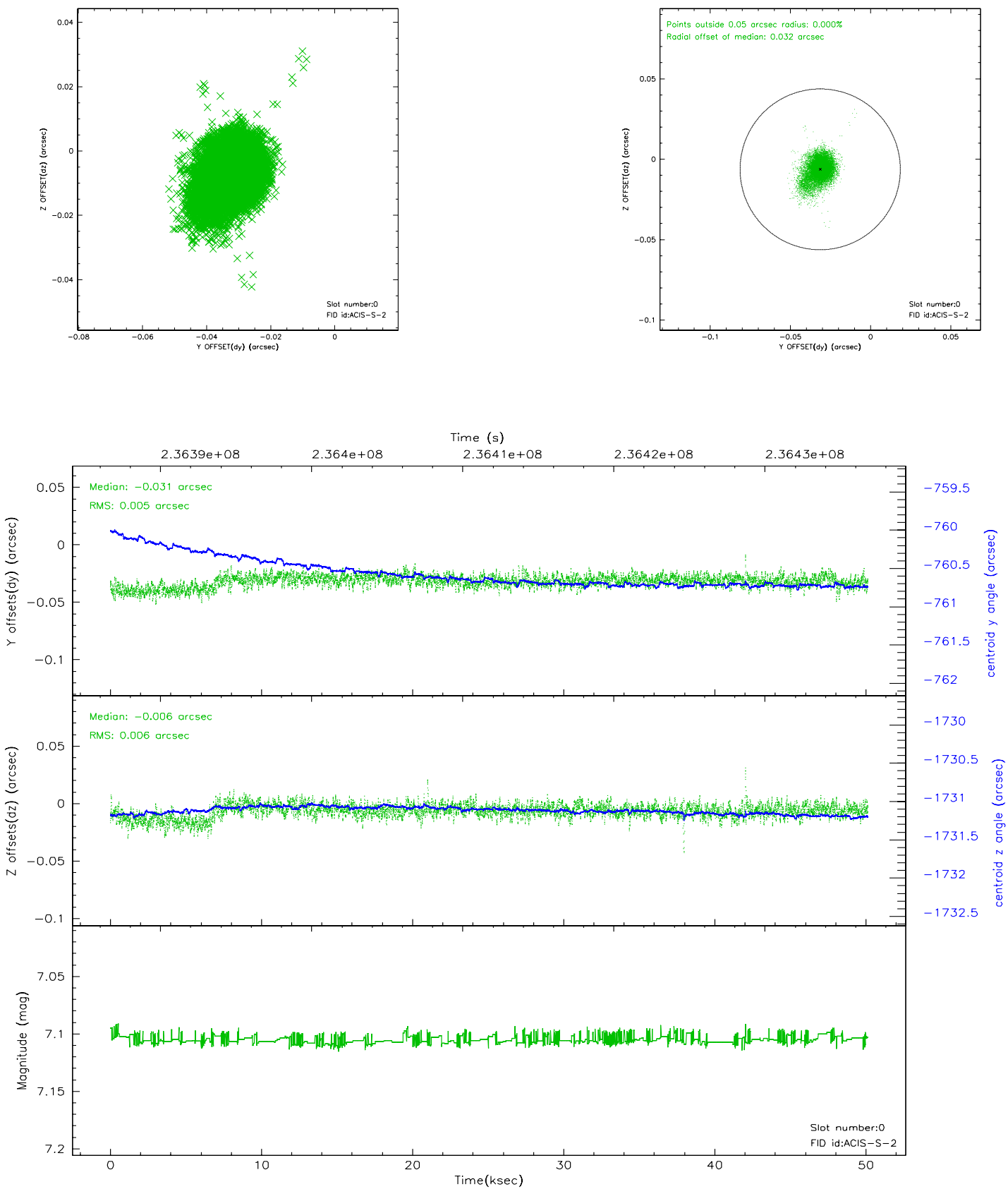


2.4.5 Slot 7

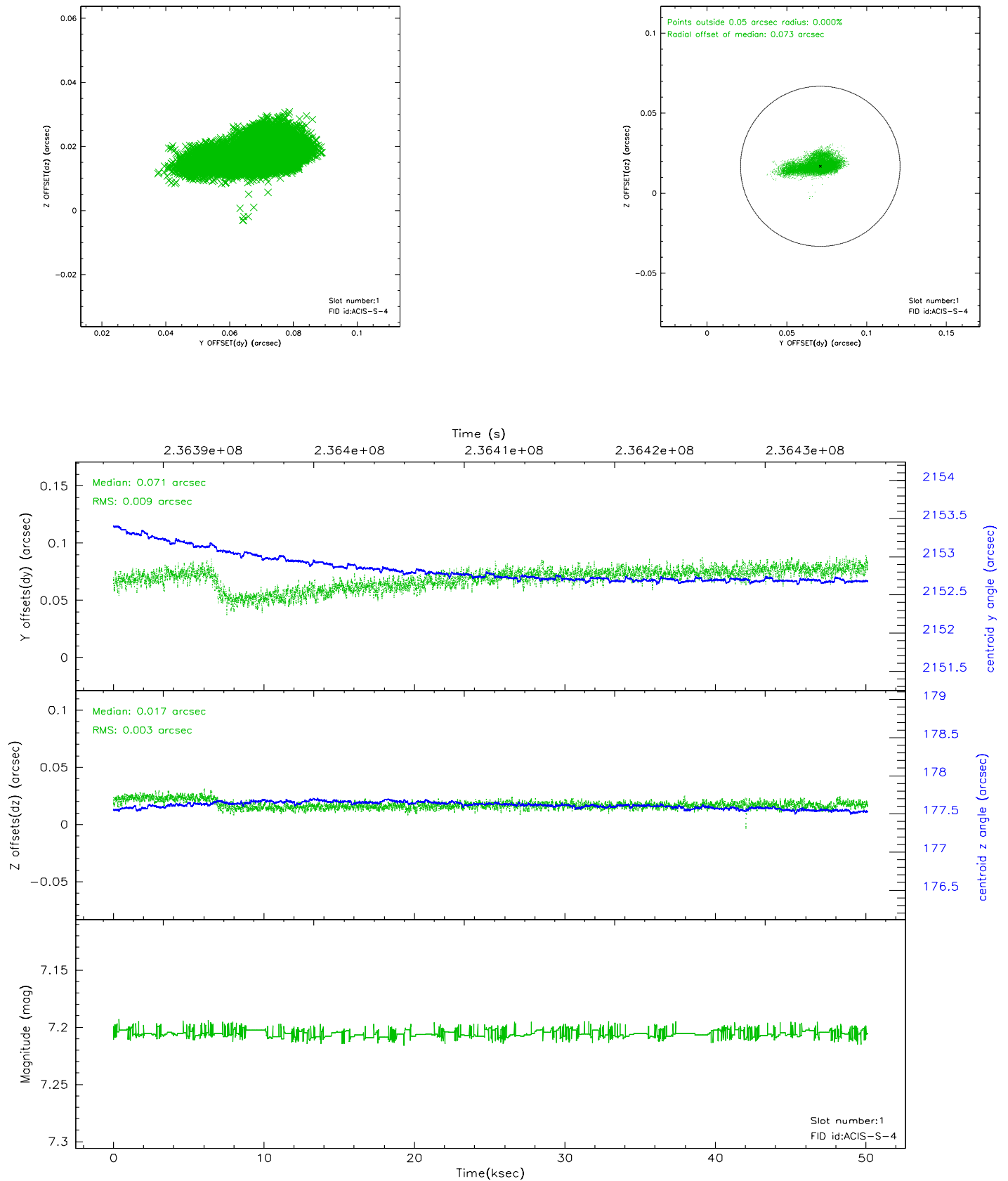


2.5 FID Slots

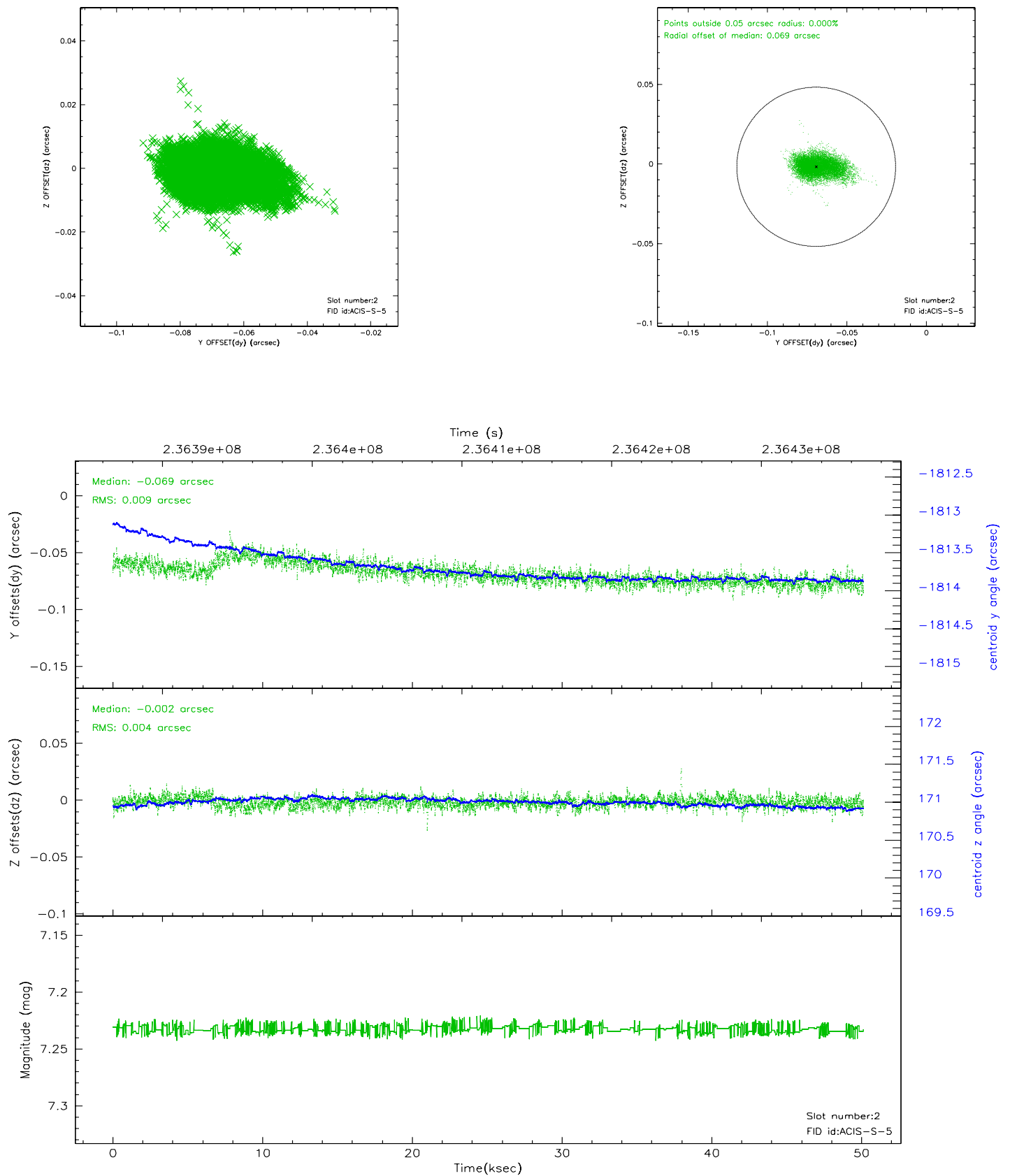
2.5.1 Slot 0



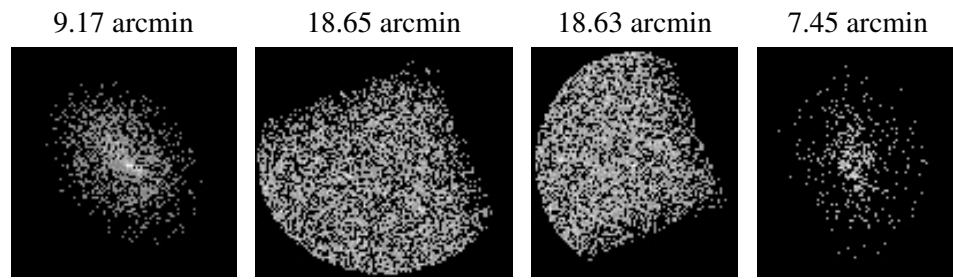
2.5.2 Slot 1



2.5.3 Slot 2



3 Point Sources



A Summary

A.1 Status

V&V Scientist	Beth Sundheim
V&V Date (YYYY-MM-DD)	2006.03.13
V&V Edition	1
V&V Disposition and Status	OK
V&V Charge Time	50.13759

A.2 Comments