

# V&V Reference Report

## L2 ASCDS Version : 7.6.7.1

Observation 6354 - L2 Version 002  
Chandra X-Ray Center

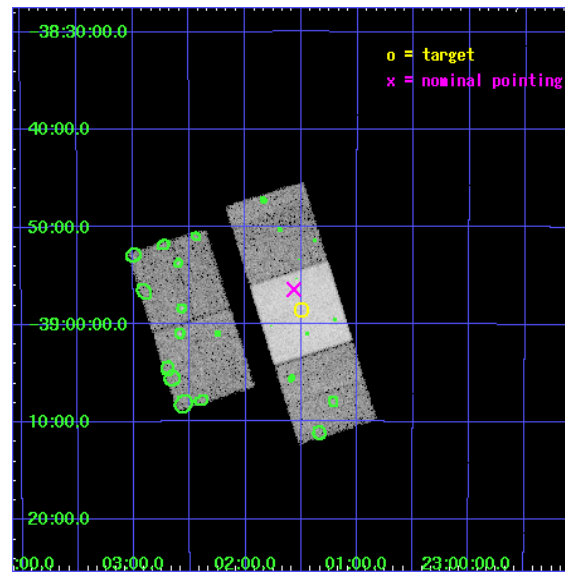
L2 Processing Date : Mar 15 2006

## Contents

<b>1</b>	<b>Front</b>	<b>2</b>
<b>2</b>	<b>OBI</b>	<b>3</b>
2.1	OBI . . . . .	3
2.1.1	Images . . . . .	3
2.1.2	Bias . . . . .	3
2.1.3	Parameters . . . . .	4
2.1.4	Events . . . . .	4
2.2	Compared Parameters . . . . .	5
2.3	Aspect . . . . .	6
2.4	Star Slots . . . . .	9
2.4.1	Slot 3 . . . . .	9
2.4.2	Slot 4 . . . . .	10
2.4.3	Slot 5 . . . . .	11
2.4.4	Slot 6 . . . . .	12
2.4.5	Slot 7 . . . . .	13
2.5	FID Slots . . . . .	14
2.5.1	Slot 0 . . . . .	14
2.5.2	Slot 1 . . . . .	15
2.5.3	Slot 2 . . . . .	16
<b>3</b>	<b>Point Sources</b>	<b>17</b>
<b>A</b>	<b>Summary</b>	<b>18</b>
A.1	Status . . . . .	18
A.2	Comments . . . . .	18

# 1 Front

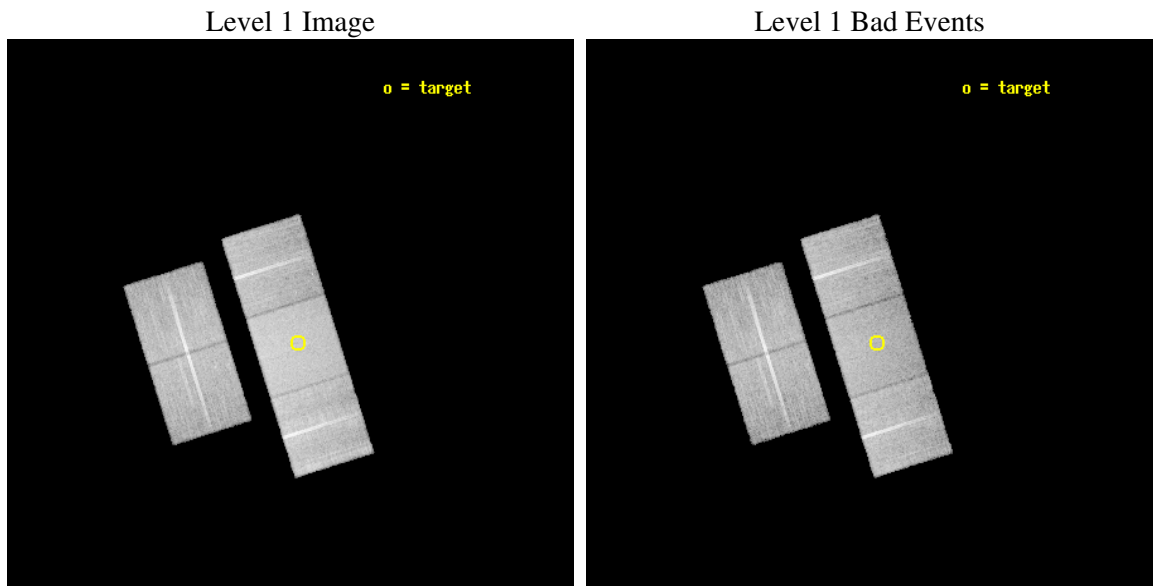
seq_num	400472
obs_id	6354
title	Confirmation of the Fading Afterglow From the Short Burst GRB 050709
observer	Dr D Frail
object	GRB050709
dtcycle	0
cycle	P
ra_targ	345.375
dec_targ	-38.975833
ra_nom	345.39157894218
dec_nom	-38.940722716515
roll_nom	72.546275246157
revision	2
ontime	18283.799964845
livetime	18044.908657967
ontime2	18283.799964845
ontime3	18283.799964845
ontime6	18283.799964845
ontime7	18283.799964845
ontime8	18283.799964845
l2events	143846



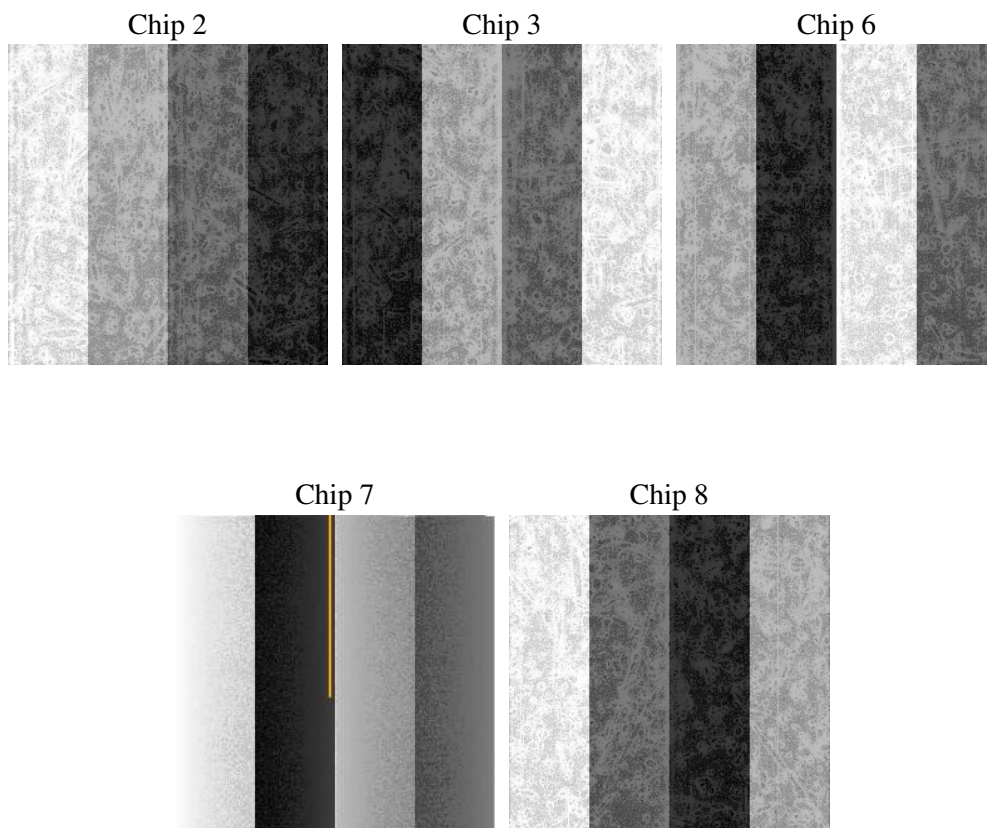
## 2 OBI

### 2.1 OBI

#### 2.1.1 Images



#### 2.1.2 Bias



### 2.1.3 Parameters

obi_num	0
ascdsver	7.6.7.1
caldbver	3.2.1
date	2006-03-15T19:59:04
revision	2

sched_exp_time	18107.313000
ontime	19043.962022036
ontime2	19043.962022036
ontime3	19043.962002099
ontime6	19043.962022036
ontime7	19043.962022036
ontime8	19043.962022036
l1events	862960

### 2.1.4 Events

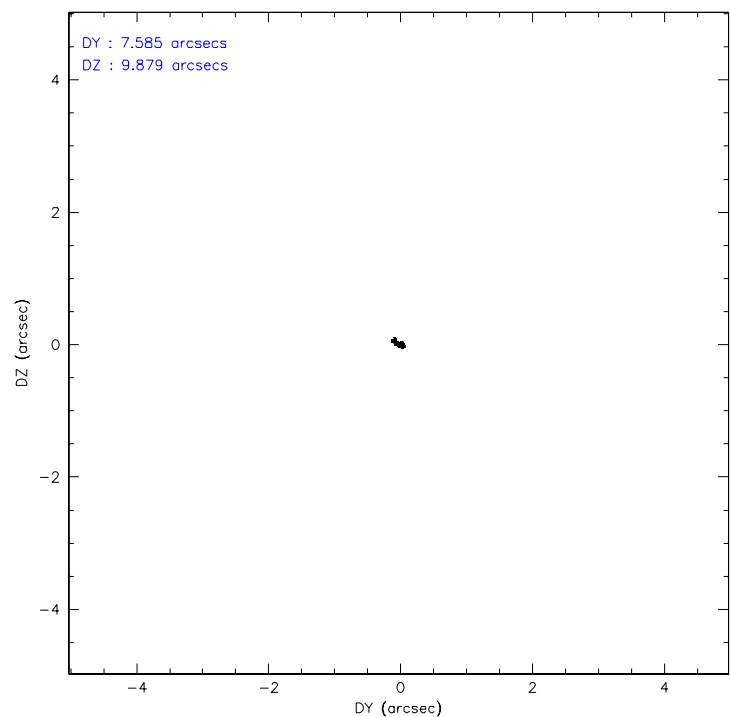
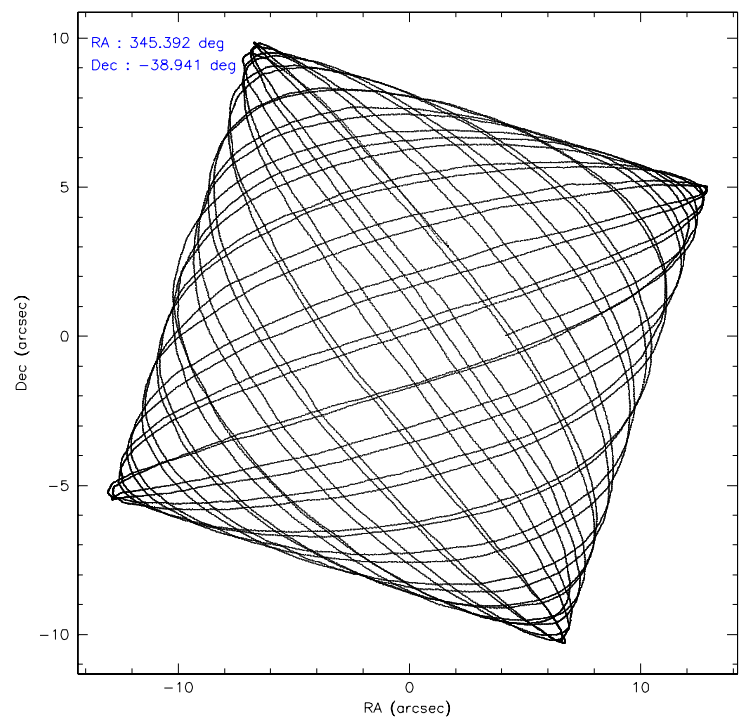
	ccd 2	ccd 3	ccd 6	ccd 7	ccd 8
level 1 events	153580	150306	154170	210029	194875
rejected events	135790	132244	135781	130780	152327
rejected %	88%	87%	88%	62%	78%

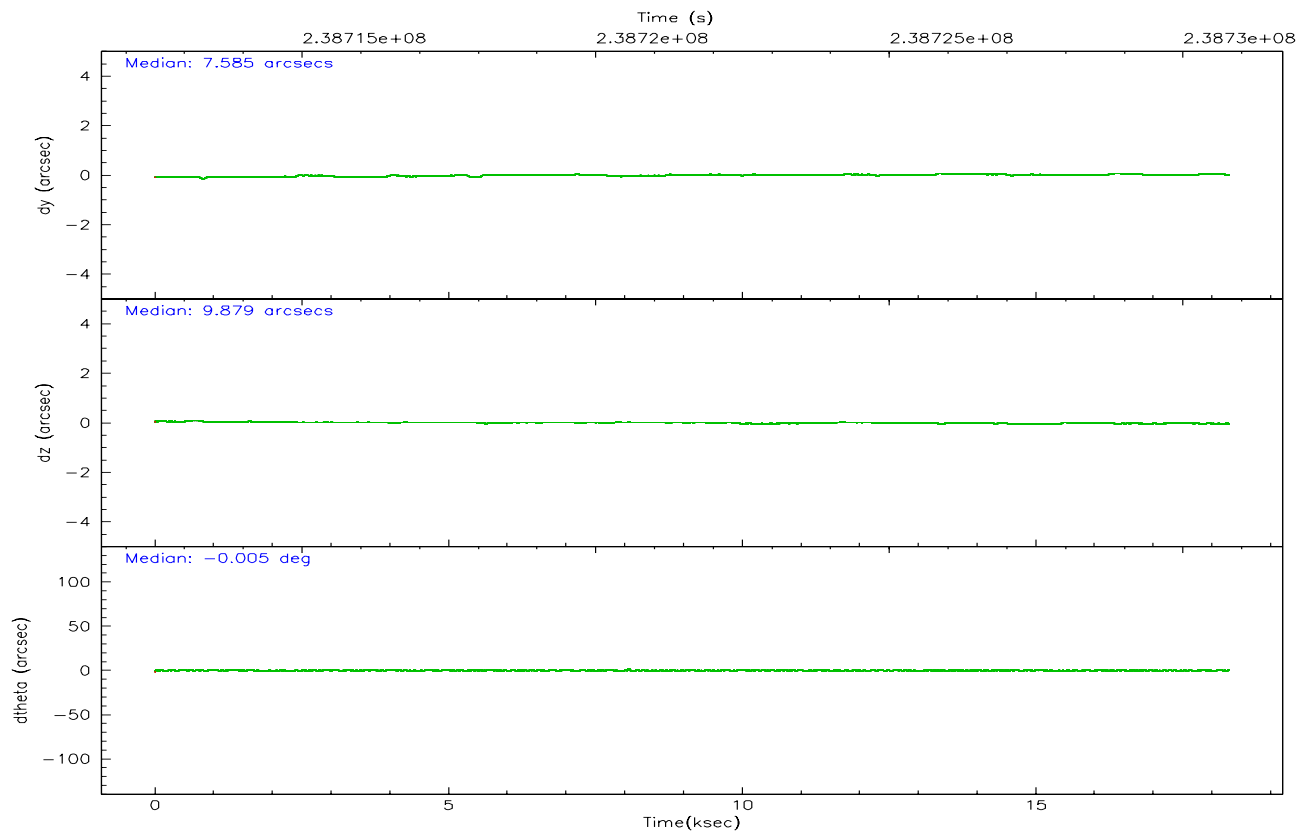
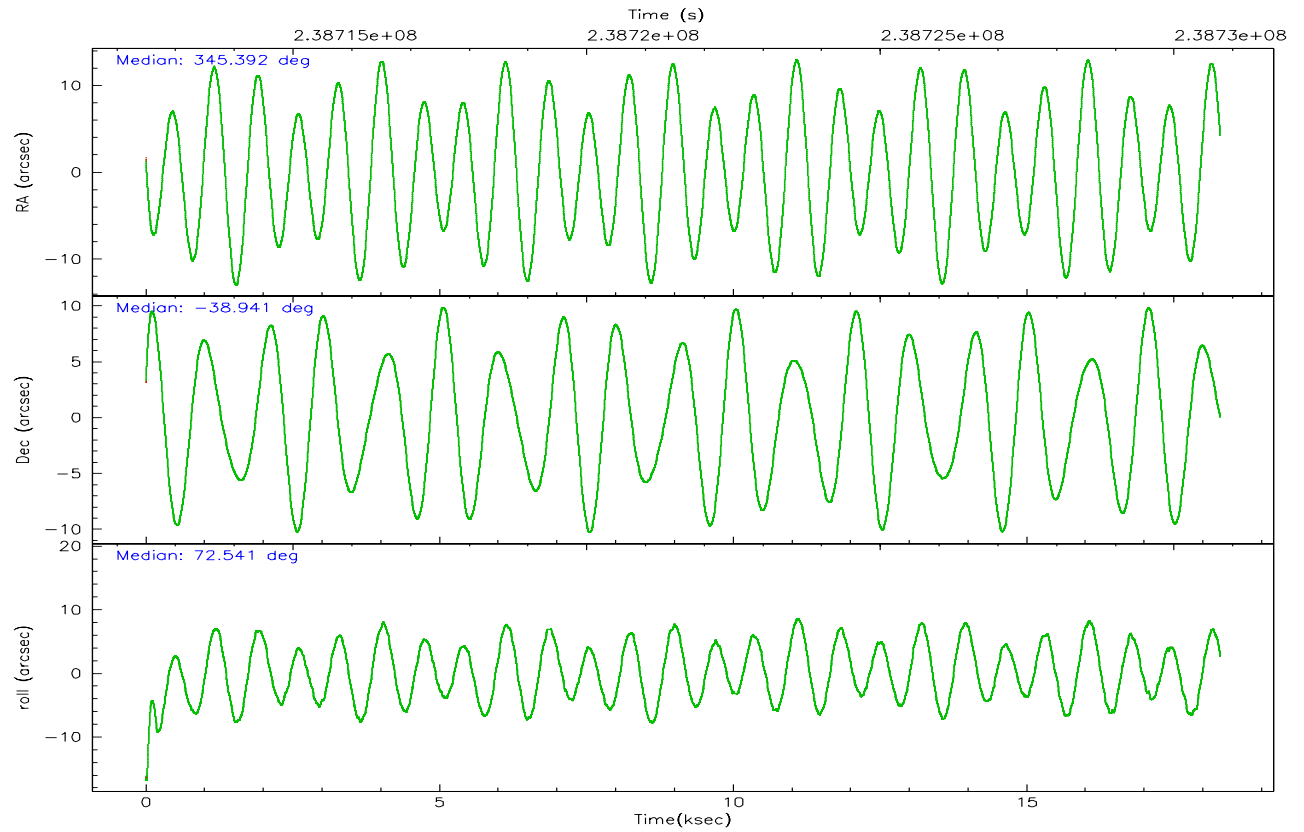
	ccd 2	ccd 3	ccd 6	ccd 7	ccd 8
grade 0 events	8429	8484	7523	4619	13955
	5%	5%	4%	2%	7%
grade 1 events	79	111	90	131	136
	0%	0%	0%	0%	0%
grade 2 events	3672	3596	4077	20928	9850
	2%	2%	2%	9%	5%
grade 3 events	1653	1763	1810	3946	4728
	1%	1%	1%	1%	2%
grade 4 events	1679	1755	1861	3887	4425
	1%	1%	1%	1%	2%
grade 5 events	5826	6952	7040	13484	9137
	3%	4%	4%	6%	4%
grade 6 events	3047	3204	3875	49106	11283
	1%	2%	2%	23%	5%
grade 7 events	129195	124441	127894	113928	141361
	84%	82%	82%	54%	72%

## 2.2 Compared Parameters

Parameter	Planned	Actual	Parameter	Planned	Actual
Instrument	ACIS	ACIS	Obspar format version number	6	6
Detector	ACIS-23678	ACIS-23678	Obspar file type	PREDICTED	ACTUAL
Grating	NONE	NONE	Obspar update status	NONE	UPDATED
Data mode	VFAINT	VFAINT	On-chip summing requested	N	N
Observation mode	POINTING	POINTING	Subarray requested	NONE	NONE
Pointing RA	345.399660	345.3915789421765	Alternating exposures requested	N	N
Pointing Dec	-38.967226	-38.94072271651474	Primary exposure time	0.000000	3.1
Pointing Roll	72.394738	72.54627524615688			
SIM focus pos (mm)	-0.684267	-0.6828225247311905			
SIM defocus (mm)	0	0.001444936568705701			
SIM translation stage pos (mm)	-190.132523	-190.1425803651734			
SIM translation stage offset (mm)	0	0.01005778216563158			
Observation start time	238712683.184000	238711306.10776			
Observation start date	2005-07-25T21:03:39	2005-07-25T20:41:46			
Observation end time	238730791.184000	238731012.75866			
Observation end date	2005-07-26T02:05:27	2005-07-26T02:10:12			
Read mode	TIMED	TIMED			

## 2.3 Aspect





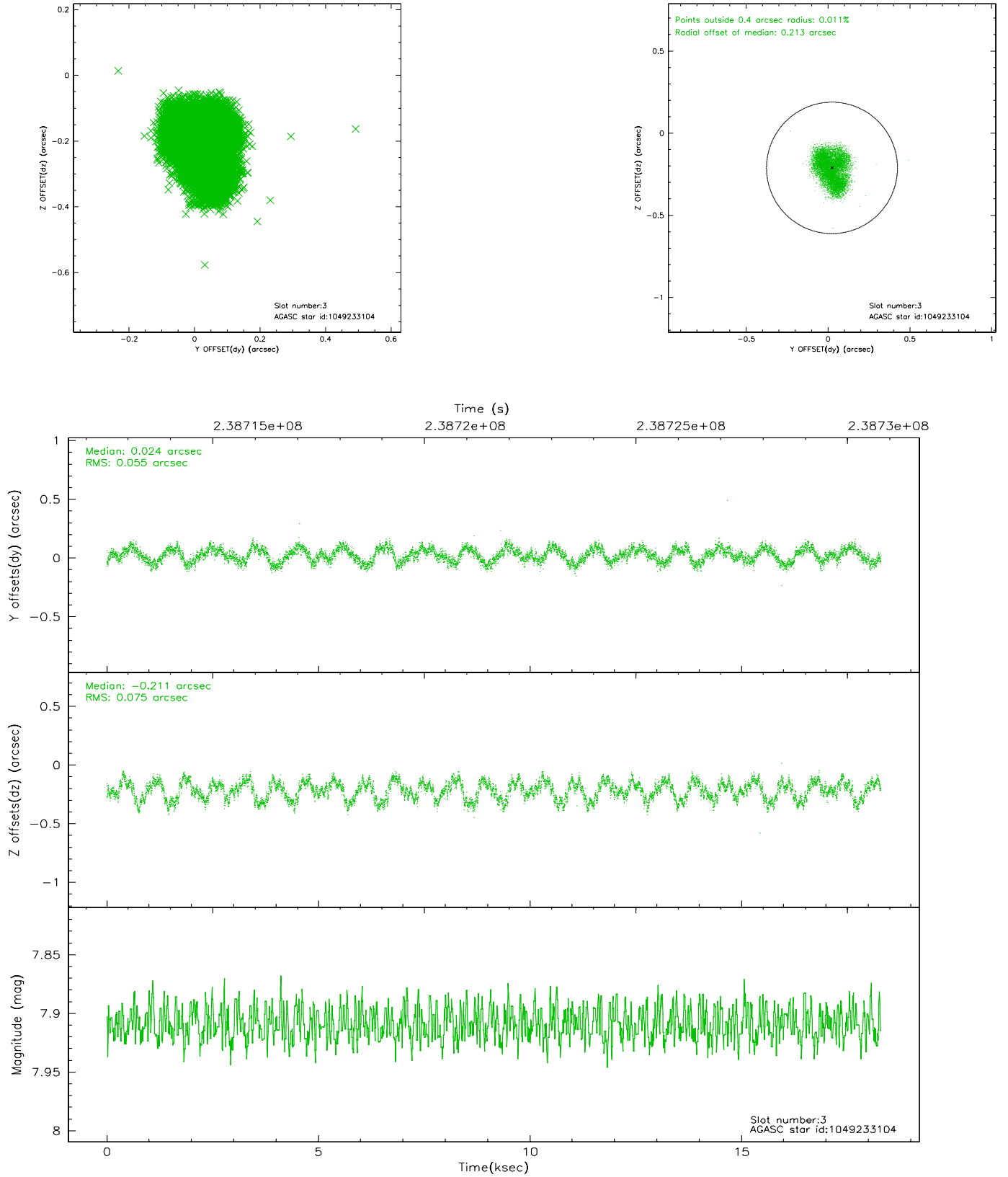
### Slot Statistics

slot	status	id	mag	n_pts	med_dy	med_dz	dr1	dr2	ra	dec	mean_y	mean_z
0	FID	ACIS-S-2	7.10	4462	-0.033	-0.002	0.007	0.011	0.000000	0.000000	-760.33	-1731.09
1	FID	ACIS-S-4	7.21	4462	0.057	0.017	0.005	0.009	0.000000	0.000000	2152.89	177.25
2	FID	ACIS-S-5	7.23	4462	-0.055	-0.006	0.006	0.011	0.000000	0.000000	-1812.96	171.06
3	GUIDE	1049233104	7.91	8922	0.024	-0.211	0.104	0.149	345.317260	-38.843726	354.00	354.64
4	GUIDE	1049234872	6.68	8924	-0.258	0.083	0.101	0.140	345.874120	-38.433441	2233.07	-694.69
5	GUIDE	1049235968	9.63	8920	0.109	0.022	0.101	0.162	345.601758	-39.176537	-547.60	-765.62
6	GUIDE	1049240648	9.62	8915	0.227	0.002	0.130	0.198	345.398802	-39.445998	-1643.16	-519.11
7	GUIDE	1049238104	8.51	8921	-0.104	0.112	0.083	0.134	346.299385	-38.892442	1007.37	-2325.11

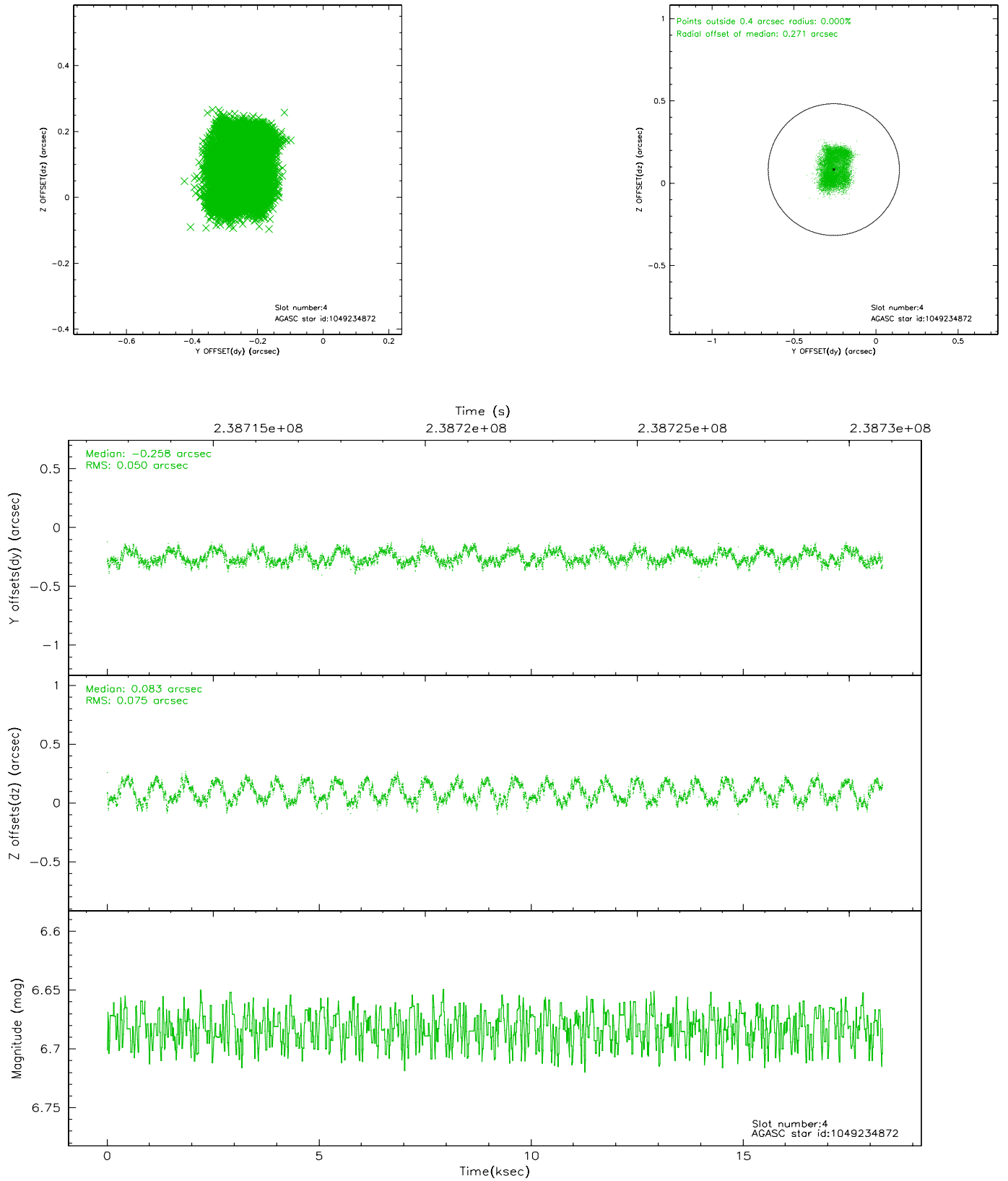


## 2.4 Star Slots

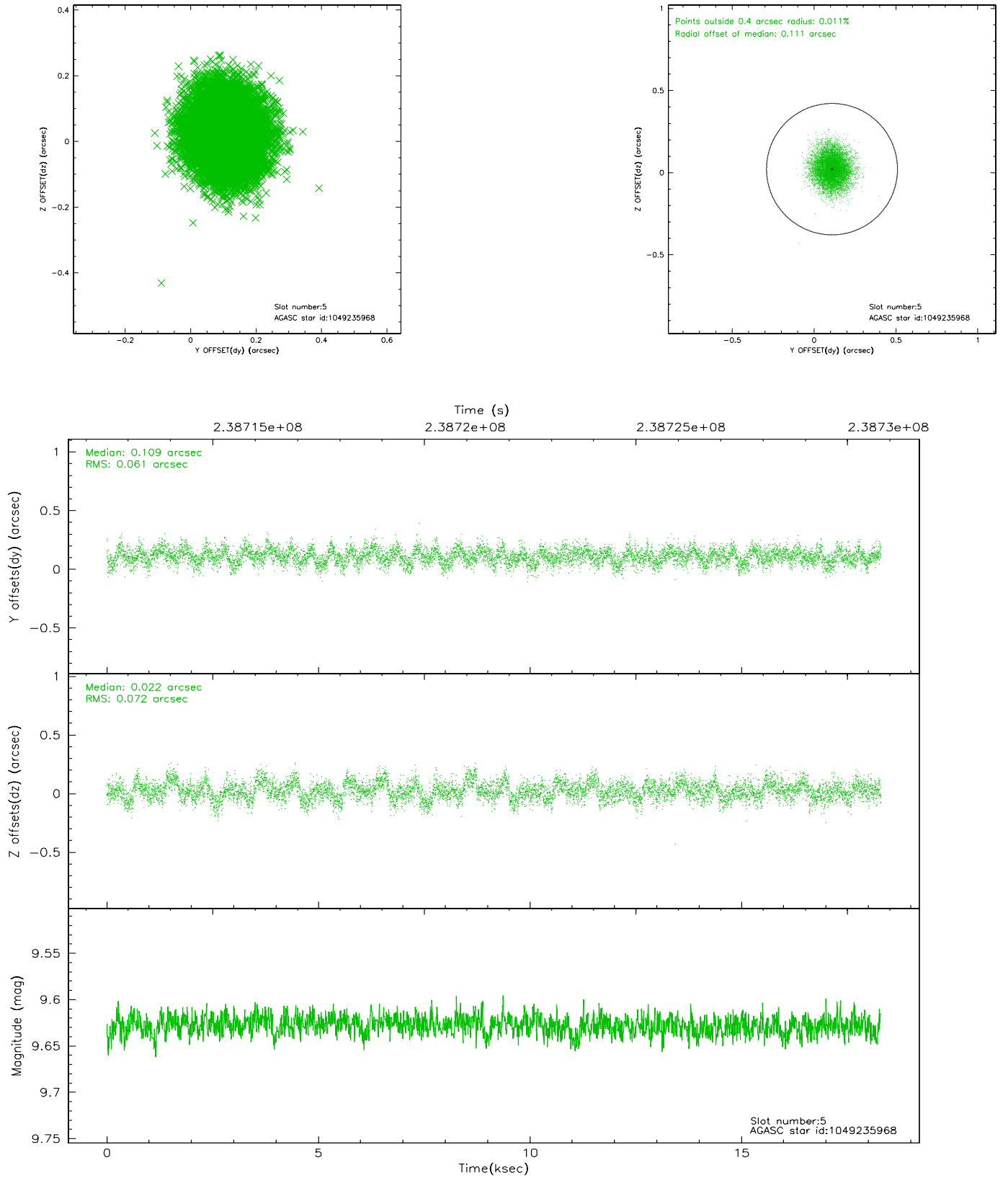
### 2.4.1 Slot 3



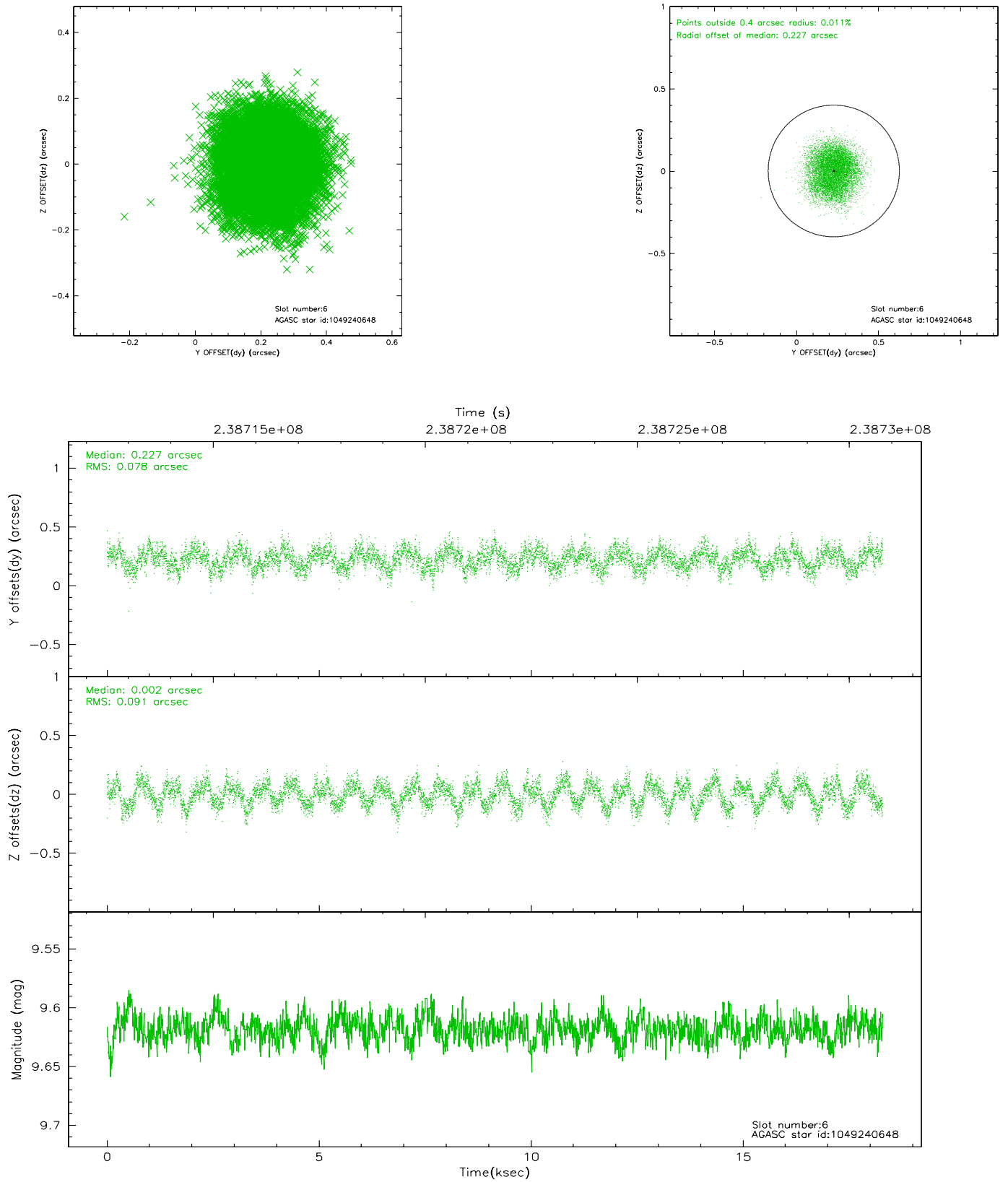
## 2.4.2 Slot 4



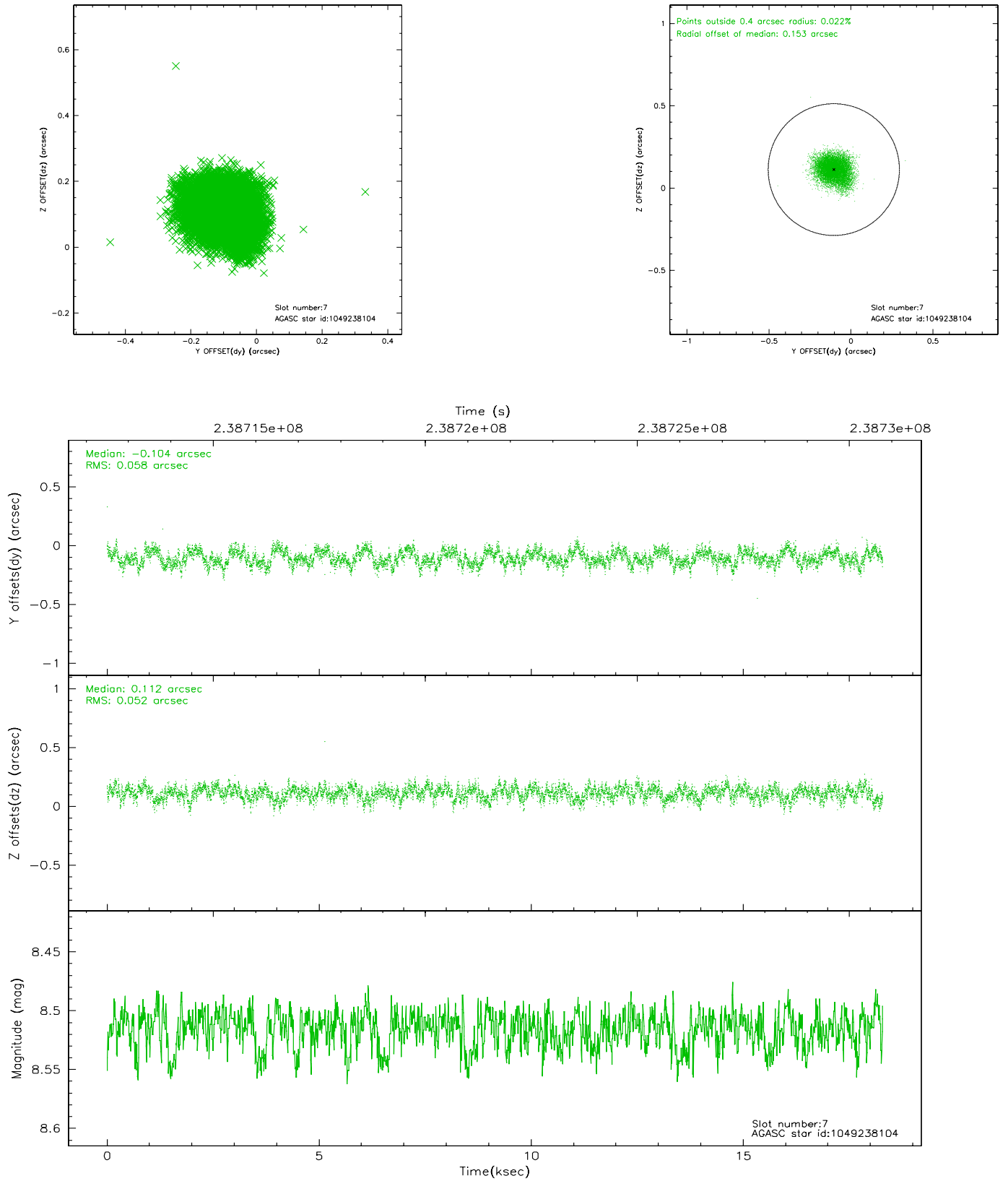
### 2.4.3 Slot 5



## 2.4.4 Slot 6

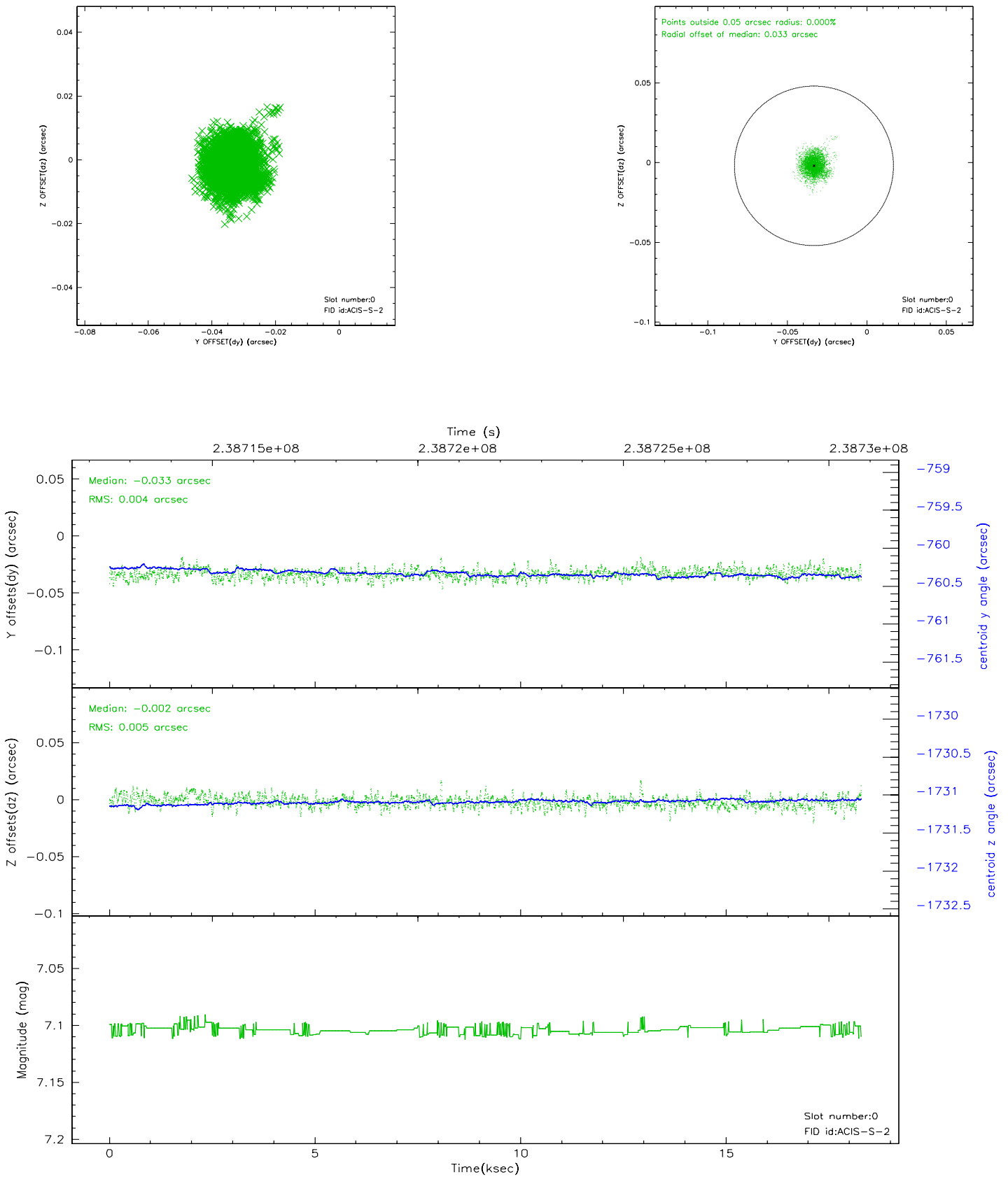


## 2.4.5 Slot 7

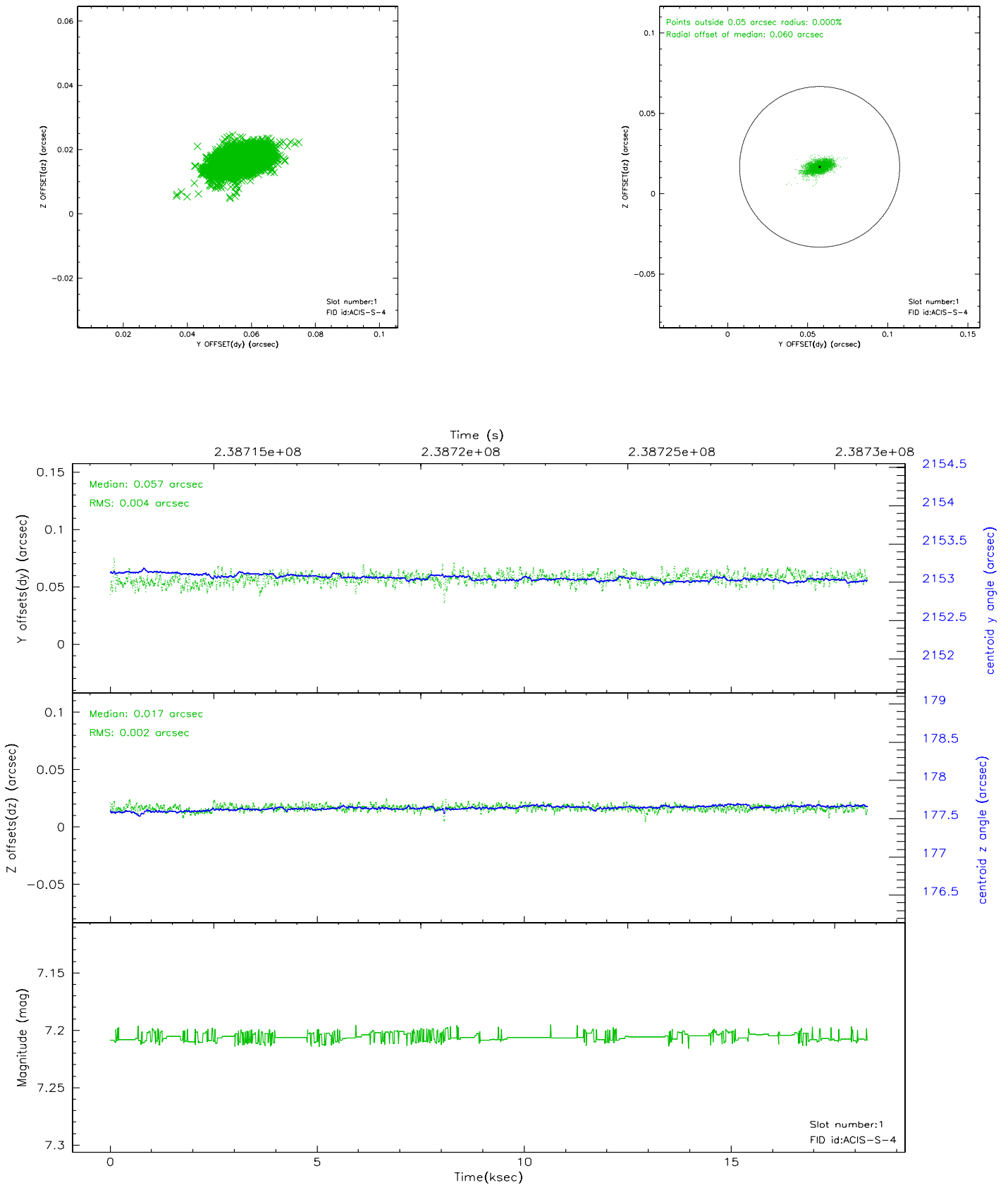


## 2.5 FID Slots

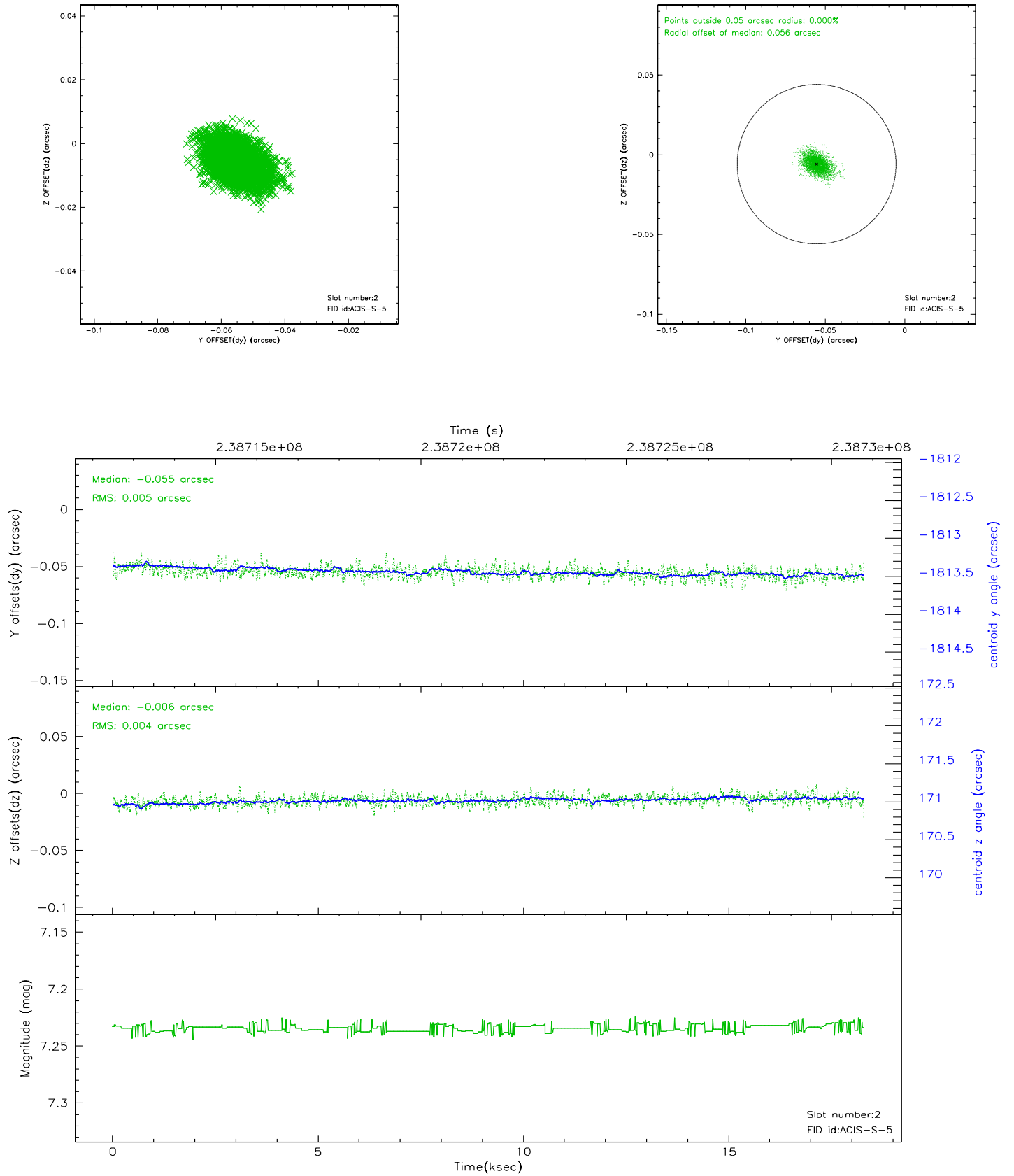
### 2.5.1 Slot 0



## 2.5.2 Slot 1

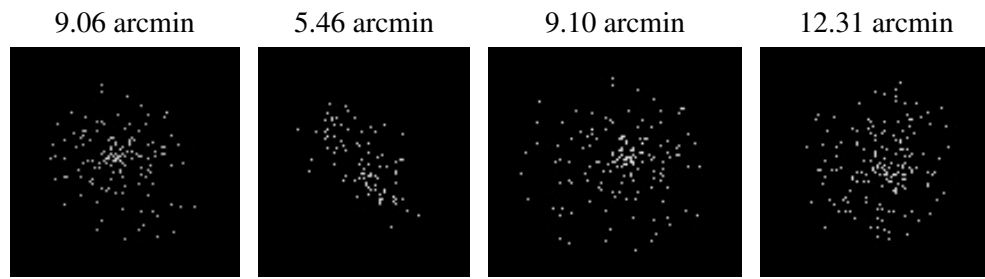


### 2.5.3 Slot 2





### 3 Point Sources



## A Summary

### A.1 Status

V&V Scientist	Jen Lauer
V&V Date (YYYY-MM-DD)	2006.03.16
V&V Edition	1
V&V Disposition and Status	OK
V&V Charge Time	19.04396

### A.2 Comments

Observer originally requested that this followup observation be taken 4-12 days after the original observation on July 12, 2005. Subsequently, the observer requested July 25 for this followup observation to be closer in time to an HST observation. Time constraint met.